




AUSTRALIAN NOTICES TO MARINERS

Notices 267 - 315

Including
Cumulative List – April 2026
List of Temporary and Preliminary Notices in force 

Published fortnightly by the Australian Hydrographic Office

Australian Notices to Mariners are the authority for correcting charts and publications published by the Australian Hydrographic Office covering Australia, Papua New Guinea, Solomon Islands, Australian Antarctic Territory and Timor-Leste.

Commodore D.G. MULLINS, RAN
Hydrographer of Australia

SECTIONS.

- I. **Australian Notices to Mariners, including blocks and notes.**
- II. **Hydrographic Reports.**

SUPPLEMENTS.

- I. **Tracings**
 - II. **Cumulative List of Australian Notices to Mariners.**
 - III. **Cumulative List of Temporary and Preliminary Australian Notices to Mariners.**
 - IV. **Temporary and Preliminary Notices in force.**
-
-

© Commonwealth of Australia 2026

This work is copyright. Apart from any use permitted under the Copyright Act 1968, no part may be reproduced by any process, adapted, communicated or commercially exploited without prior written permission from The Commonwealth represented by the Australian Hydrographic Office.

IMPORTANT NOTICE

This edition of Notices to Mariners includes all navigationally significant information affecting AHO products which the AHO has become aware of since the last edition. All reasonable efforts have been made to ensure the accuracy and completeness of the information, including third party information, on which these updates are based. The AHO regards third parties from which it receives information as reliable, however the AHO cannot verify all such information and errors may therefore exist. The AHO does not accept liability for errors in third party information.

GENERAL INSTRUCTIONS

The substance of these notices should be inserted on the charts affected.

Bearings are referred to the true compass and are reckoned clockwise from North; those relating to lights are given as seen by an observer from seaward.

Positions quoted in notices relate to WGS84 which is the horizontal datum for all charts produced by the Australian Hydrographic Office.

The range quoted for a light is its nominal range.

Depths are with reference to the chart datum of each chart. Heights are above mean high water springs or mean higher high water, as appropriate.

The capital letter (P) or (T) after the number of any notice denotes a preliminary or temporary notice respectively, which are contained separately at the end of the permanent notices.

REPORTING OF DANGERS

Mariners are particularly requested to notify the AUSTRALIAN HYDROGRAPHIC OFFICE, Locked Bag 8801 Wollongong, NSW 2500 (e-mail datacentre@hydro.gov.au or, alternatively by filling in and submitting the [Hydrographic Notes](#) forms located on the web site – www.hydro.gov.au), immediately on the discovery of new dangers or suspected dangers to navigation. For changes or defects in aids to navigation notify AusSAR (Fax 02-6230 6868 or email rccaus@amsa.gov.au).

AUTHORISED USE

Copies of Australian notices are available free of charge from the Australian Hydrographic Office (AHO) website (www.hydro.gov.au) and through the eNotices (email) service (www.hydro.gov.au/enotices/enotices.htm).

Individual Notices may be copied for the purpose of inserting Notice substance on official charts and publications. Paper copies may be printed by chart agents and distributed to customers on a cost recovery basis. Participating chart agents are listed on the AHO website as providing a 'Paper Notices to Mariners' service (www.hydro.gov.au/prodserv/agents-list.htm). Copies of the notices may not be sold for profit without prior written agreement.

NUMERICAL INDEX OF NOTICES TO MARINERS

Edition No 7

Notices	Aus Chart, INT Chart, ENC Cell, AHP, BA Pubs
267	Aus 255
268	Aus 53, 64, 489
269	Summer time
270	Aus 813
271	Aus 841
272	Aus 14
273	Aus 335, 754, 4708, 4709, INT 708, 709
274	Aus 59, 60
275	Aus 4709, INT 709
276	Aus 4708, INT 708
277	Aus 116, 755
278	Aus 781
279	Aus 780
280	Aus 143, 155
281	Aus 802
282	Aus 487, 802
283	Aus 179, 800
284	Cumulative List of Australian Notices to Mariners - April 2026
285(T)	Aus 489, 806, 807, 808, 4601, 4602, INT 601, 602
286(T)	Aus 198
287(T)	Aus 255, 826
288(T)	Aus 242, 817, 818
289(T)	Aus 236, 815
290(T)	Aus 237
291(T)	Aus 256
292(T)	Aus 720
293(T)	Aus 73, 331
294(T)	Aus 319, 322
295(T)	Aus 73, 331
296(T)	Aus 327, 4603, 4708, 4722, 4723, INT 603, 708, 722, 723
297(T)	Aus 65, 742
298(T)	Aus 328
299(T)	Aus 328
300(T)	Aus 328, 329, 744
301(T)	Aus 64
302(T)	Aus 322
303(T)	Aus 343, 346, 780
304(P)	Aus 346, 485, 4709, INT 709
305(T)	Aus 155
306(T)	Aus 143
307(T)	Aus 143
308(T)	Aus 155
309(T)	Aus 151
310(T)	Aus 151, 179, 181, 349, 357, 487, 766, 767, 790, 798, 800, 801, 802, 4601, 4709, INT 601, 709
311(T)	Aus 766
312(T)	Aus 171
313(T)	Aus 487, 790
314(T)	SLB 303, 304
315(T)	TEMPORARY AND PRELIMINARY NOTICES

NUMERICAL INDEX OF CHARTS AFFECTED

Edition No 7

Aus Chart	Notices
Aus 14	272
Aus 53	268
Aus 59	274
Aus 60	274
Aus 64	268, 301(T)
Aus 65	297(T)
Aus 73	293(T), 295(T)
Aus 116	277
Aus 143	280, 306(T), 307(T)
Aus 151	309(T), 310(T)
Aus 155	280, 305(T), 308(T)
Aus 171	312(T)
Aus 179	283, 310(T)
Aus 181	310(T)
Aus 198	286(T)
Aus 236	289(T)
Aus 237	290(T)
Aus 242	288(T)
Aus 255	267, 287(T)
Aus 256	291(T)
Aus 319	294(T)
Aus 322	294(T), 302(T)
Aus 327	296(T)
Aus 328	298(T), 299(T), 300(T)
Aus 329	300(T)
Aus 331	293(T), 295(T)
Aus 335	273
Aus 343	303(T)
Aus 346	303(T), 304(P)
Aus 349	310(T)
Aus 357	310(T)
Aus 485	304(P)
Aus 487	282, 310(T), 313(T)
Aus 489	268, 285(T)
Aus 720	292(T)
Aus 742	297(T)
Aus 744	300(T)
Aus 754	273
Aus 755	277
Aus 766	310(T), 311(T)
Aus 767	310(T)
Aus 780	279, 303(T)
Aus 781	278
Aus 790	310(T), 313(T)
Aus 798	310(T)
Aus 800	283, 310(T)
Aus 801	310(T)
Aus 802	281, 282, 310(T)
Aus 806	285(T)
Aus 807	285(T)
Aus 808	285(T)
Aus 813	270
Aus 815	289(T)
Aus 817	288(T)

Aus Chart	Notices
Aus 818	288(T)
Aus 826	287(T)
Aus 841	271
Aus 4601	285(T), 310(T)
Aus 4602	285(T)
Aus 4603	296(T)
Aus 4708	273, 276, 296(T)
Aus 4709	273, 275, 304(P), 310(T)
Aus 4722	296(T)
Aus 4723	296(T)
SLB 303	314(T)
SLB 304	314(T)

INT Chart	Notices
INT 601	285(T), 310(T)
INT 602	285(T)
INT 603	296(T)
INT 708	273, 276, 296(T)
INT 709	273, 275, 304(P), 310(T)
INT 722	296(T)
INT 723	296(T)

267 AUSTRALIA - Products - New Charts, New Editions, Withdrawn Charts

Australian Hydrographic Office

New Charts

<i>Chart</i>	<i>Title and Geographical limits</i>	<i>Scale</i>	<i>Publication Date</i>	<i>Remarks</i>
NIL				

New Electronic Navigation Chart (Aus ENC)

<i>Cell Name</i>	<i>Title</i>	<i>Publication Date</i>	<i>Remarks</i>
AU270A90	Australia Antarctic Territory - Krause Point to Davis Peninsula	2/4/2026	
AU270120	Australia Antarctic Territory - Henry Bay	2/4/2026	

New Editions and Withdrawn Charts

<i>Chart</i>	<i>Title</i>	<i>Scale</i>	<i>Publication Date</i>	<i>Remarks</i>
Aus 255 (Edition 8)	Australia - East Coast - Queensland - Approaches to Abbot Point	1:25 000	3/4/2026	New edition with general updating throughout; including latest bathymetric data. Chart Aus 255 Edition 7 dated 6 Aug 2021 is now superseded and must be withdrawn from use.

Chart permanently withdrawn

Charts listed above as withdrawn no longer meet chart carriage requirements and should be marked as "superseded" and replaced with the new chart/ new edition listed prior to passage through the area covered by the new chart.

When placing orders with a chart agent between notice of forthcoming edition and its publication, mariners should advise whether their order pertains to the current edition or the new edition.

For further details refer to the AHO website at www.hydro.gov.au for new edition and new chart stock arrival information.

268 AUSTRALIA - Products - New Charts and New Editions to be published shortly

Australian Hydrographic Office

New Charts to be published shortly

<i>Chart</i>	<i>Title</i>	<i>Scale</i>	<i>Remarks</i>
NIL			

New Editions to be published shortly

<i>Chart</i>	<i>Title</i>	<i>Scale</i>	<i>Remarks</i>
Aus 53	Australia - North West Coast - Western Australia - Approaches to Port Hedland Inset: Hunt Point	1:50 000 1:15 000	New edition with general updating throughout; including new inset.
Aus 64	Australia - West Coast - Western Australia - Approaches to Port of Ashburton and Onslow	1:50 000	New edition with general updating throughout; including latest bathymetric data.
Aus 489	Australia - East Coast - New South Wales - Jervis Bay to Sugarloaf Point	1:500 000	New edition with general updating throughout; including latest bathymetric data.

269 AUSTRALIA - Summer time

Australian Government

Clocks will be wound back one hour at 0300 local time on 5 APR 2026 in the Australian Capital Territory, New South Wales, South Australia, Victoria and Tasmania.

No changes will be made in Queensland, Northern Territory and Western Australia.

270 AUSTRALIA - NEW SOUTH WALES - Ballina - Artificial reef

NSW Department of Primary Industries and Regional Development

Aus 813 [898/2025]

Insert fish haven with minimum depth, *20m*, centred on 28° 55'.39 S 153° 35'.09 E

271 AUSTRALIA - TORRES STRAIT - Numar Reef - Depths

Maritime Safety Queensland

Aus 841 [44/2026]

Replace depth, *2₁m*, with depth, *1₆m*, enclosed by contour 9° 41'.2 S 142° 22'.2 E

272 AUSTRALIA - NORTHERN TERRITORY - Groote Eylandt - Milner Bay - Anchorage

Northern Territory Government Notice 10/2026

Aus 14 [231/2026]

Insert anchor berth, desig *4*, with *0.25M* radius swinging circle centred on 13° 52'.6 S 136° 23'.3 E

273 AUSTRALIA - WESTERN AUSTRALIA - Cape Peron to Cape Naturaliste - Depths

Australian Hydrographic Office

Aus 335 [236/2026]

Replace depth, *26₅m*, with depth, *20₉m* 33° 26'.0 S 114° 51'.0 E

Aus 754 [237/2026]

Replace depth, *20₈m*, with depth, *18₃m*, enclosed by contour 32° 18'.5 S 115° 21'.8 E

Aus 4708 (INT 708) [1070/2025]

Replace depth, *20₈m*, with depth, *18₃m* 32° 18'.5 S 115° 21'.8 E

depth, *26₅m*, with depth, *20₉m* 33° 26'.0 S 114° 51'.0 E

Aus 4709 (INT 709) [198/2026]

Replace depth, *20₈m*, with depth, *18₃m* 32° 18'.5 S 115° 21'.8 E

depth, *26₅m*, with depth, *20₉m* 33° 26'.0 S 114° 51'.0 E

274 AUSTRALIA - WESTERN AUSTRALIA - Dampier - Service Wharf - Depths

Department of Transport and Major Infrastructure WA

Aus 59 [91/2025]

Insert [accompanying block](#) 20° 38'.17 S 116° 43'.86 E

Aus 60 [517/2024]

Insert [accompanying block](#) 20° 38'.17 S 116° 43'.86 E

275 AUSTRALIA - WESTERN AUSTRALIA - Eastern Group - Depths

Revelare Hydrospatial

Aus 4709 (INT 709) [273/2026]

Insert depth, *29₆m*, enclosed by contour 33° 37'.5 S 124° 17'.0 E

Replace depth, *24₂m*, with depth, *22₇m* 33° 57'.4 S 123° 53'.6 E

276 AUSTRALIA - WESTERN AUSTRALIA - Exmouth Plateau - FPSO

Woodside Energy Ltd

Aus 4708 (INT 708) [273/2026]

Insert	lit FPSO	19° 55'.6 S	113° 14'.5 E
--------	----------	-------------	--------------

277 AUSTRALIA - WESTERN AUSTRALIA - Lowendal Islands - Depths

Department of Transport WA

Aus 116 (Entrance to Mandurah Estuary) [236/2026]

Insert	contour, between	32° 31'.082 S	115° 42'.891 E
		32° 31'.022 S	115° 42'.796 E
		32° 30'.977 S	115° 42'.891 E
		32° 31'.048 S	115° 43'.045 E
	depth, 1 ₃ m	32° 31'.024 S	115° 42'.857 E
	depth, 1 ₇ m, enclosed by contour	32° 31'.028 S	115° 42'.739 E
	depth, 1 ₂ m	32° 31'.035 S	115° 42'.960 E

Delete	contour, between	32° 31'.08 S	115° 42'.89 E
		32° 31'.05 S	115° 43'.05 E
	depth, 2 ₄ m	32° 31'.02 S	115° 42'.83 E
	depth, 1 ₈ m	32° 31'.07 S	115° 42'.98 E

Aus 755 [47/2026]

Insert	contour, between	32° 31'.11 S	115° 42'.89 E
		32° 31'.06 S	115° 42'.70 E
		32° 31'.02 S	115° 42'.71 E
		32° 30'.96 S	115° 42'.92 E

Replace	depth, 1 ₈ m, with depth, 1 ₂ m	32° 31'.1 S	115° 43'.0 E
---------	---	-------------	--------------

Delete	contour, between	32° 31'.1 S	115° 42'.9 E
		32° 31'.0 S	115° 42'.9 E

278 AUSTRALIA - SOUTH AUSTRALIA - Gulf St Vincent - Oyster Point - Scientific instrument

Department for Infrastructure and Transport SA Notice 20/2026

Aus 781 [48/2026]

Insert	special pillar light buoy, Fl. Y. 3s, with topmark	34° 55'.32 S	137° 55'.78 E
--------	--	--------------	---------------

279 AUSTRALIA - SOUTH AUSTRALIA - Kangaroo Island - Eastern Cove - Scientific instrument

Department for Infrastructure and Transport SA Notice 21/2026

Aus 780 [199/2026]

Insert	special pillar light buoy, Fl. Y. 3s, with topmark	35° 43'.63 S	137° 50'.30 E
--------	--	--------------	---------------

280 AUSTRALIA - VICTORIA - Port Phillip - Point Cook - Nav aids

Parks Victoria Notice 162/2026

Aus 143 [198/2026]

Insert	east cardinal pillar light buoy, Q(3)10s, with topmark	37° 55'.65 S	144° 48'.99 E
--------	--	--------------	---------------

Delete	light beacon	37° 55'.6 S	144° 48'.9 E
--------	--------------	-------------	--------------

Aus 155 [50/2026]

Insert	east cardinal pillar light buoy, Q(3)10s, with topmark	37° 55'.646 S	144° 48'.993 E
--------	--	---------------	----------------

Delete	light beacon	37° 55'.59 S	144° 48'.91 E
--------	--------------	--------------	---------------

281 AUSTRALIA - BASS STRAIT - Kent Group - North East Isle - Rock; depths

Tasmanian Police Marine & Rescue Services, Australian Hydrographic Office

Aus 802 [144/2026]

Insert	accompanying block	39° 27'.7 S	147° 20'.5 E
--------	------------------------------------	-------------	--------------

282 AUSTRALIA - BASS STRAIT - South West Isle - Light

Australian Maritime Safety Authority Final ATH 3/2026

Aus 487 [198/2026]

Amend light range to 10M

39° 31'.3 S

147° 07'.6 E

Aus 802 [281/2026]

Amend light range to 10M

39° 31'.3 S

147° 07'.6 E

283 AUSTRALIA - TASMANIA - Lady Barron - Infrastructure

Marine and Safety Tasmania Notice 121/2026

Aus 179 (Franklin Sound) [NE 19/7/2024]

Insert continuous line, between

40° 12'.73 S

148° 14'.86 E

40° 12'.76 S

148° 14'.91 E

40° 12'.76 S

148° 14'.94 E

40° 12'.74 S

148° 14'.96 E

Aus 800 [NE 28/11/2025]

Insert continuous line, between

40° 12'.73 S

148° 14'.86 E

40° 12'.76 S

148° 14'.91 E

40° 12'.76 S

148° 14'.94 E

40° 12'.74 S

148° 14'.96 E

284 AUSTRALIA - Cumulative List of Australian Notices to Mariners - April 2026

Australian Hydrographic Office

The Cumulative List of Australian Notices to Mariners - April 2026 is issued as an [accompanying supplement](#). It lists all permanent notices affecting charts in the Area of Australian Charting Responsibility published in the preceding two years since Edition 8 of 2024 dated 12 April 2024, and includes Edition 7 of 2026 dated 2 April 2026. It will be revised in October 2026.

A supplement is available on the website which is revised fortnightly.

285(T)/2026 AUSTRALIA - NEW SOUTH WALES - Jervis Bay - Live firing southeastwards

Department of Defence

During the period 9 to 10 April 2026, live firing will be conducted in an area bounded by the following positions:

35° 05'.0 S 150° 58'.0 E
 35° 12'.0 S 150° 53'.0 E
 35° 17'.0 S 150° 45'.0 E
 35° 20'.0 S 150° 34'.0 E
 36° 56'.0 S 150° 45'.0 E
 36° 41'.0 S 151° 46'.0 E
 36° 13'.0 S 152° 25'.0 E
 36° 41'.0 S 151° 46'.0 E
 35° 36'.0 S 152° 50'.0 E
 35° 19'.0 S 152° 55'.0 E
 34° 56'.0 S 152° 25'.0 E
 36° 41'.0 S 151° 46'.0 E
 34° 57'.0 S 150° 59'.0 E.

Mariners are advised to keep clear of this area.

Chart temporarily affected - Aus 489 - Aus 806 - Aus 807 - Aus 808 - Aus 4601 (INT 601) - Aus 4602 (INT 602)

286(T)/2026 AUSTRALIA - NEW SOUTH WALES - Kurnell Peninsula - Cape Baily - Light buoy off station eastwards

Port Authority of New South Wales Notice 9/2026

The special light buoy, *Fl(5)Y.20s* (34° 02'.47 S 151° 15'.20 E), is off station and is currently in position 34° 02'.72 S 151° 15'.04 E with light temporary altered to *Fl(5)Y.20s* & *Fl.2s*.

Chart temporarily affected - Aus 198

287(T)/2026 AUSTRALIA - QUEENSLAND - Abbot Point - Bald Hill - Lights restored*Former Notice - 324(T)/2024* is cancelled

Maritime Safety Queensland

Cancel this notice on receipt.

Chart formerly affected - Aus 255 - Aus 826

288(T)/2026 AUSTRALIA - QUEENSLAND - Bundaberg - Burnett River - Dredging operations

Maritime Safety Queensland Notice 142(T)/2026

Dredge *Brisbane* and support vessel *Pacific Conquest* are conducting dredging and bed levelling operations in the shipping channels, including swing basins and berth pockets, between the Sugar Berth (24° 46'.27 S 152° 22'.91 E) and the outer light beacons (24° 45'.21 S 152° 28'.12 E).

The vessels will display appropriate lights and shapes and will monitor VHF Ch 13 and Ch 16.

Mariners are advised to navigate with caution in the area.

Chart temporarily affected - Aus 242 - Aus 817 - Aus 818

289(T)/2026 AUSTRALIA - QUEENSLAND - Caloundra Head - Scientific instruments*Former Notice - 56(T)/2026* is cancelled

Maritime Safety Queensland Notice 141(T)/2026

Special light buoys, *Fl.Y.3s*, exist in the following positions:

26° 50'.55 S 153° 08'.27 E
 26° 48'.97 S 153° 08'.67 E.

Mariners are advised to navigate with caution in the area.

Chart temporarily affected - Aus 236 - Aus 815

290(T)/2026 AUSTRALIA - QUEENSLAND - Hamilton Reach - Wreck salvaged

Former Notice - 991(T)/2025 is cancelled
Maritime Safety Queensland

Cancel this notice on receipt.

Chart formerly affected - Aus 237**291(T)/2026 AUSTRALIA - QUEENSLAND - Magnetic Island - Horseshoe Bay - Wreck**

Maritime Safety Queensland Notice 130(T)/2026

A stranded wreck marked by a special light buoy, *Fl. Y. 3s*, exists in position 19° 06'.59 S 146° 51'.56 E.

Mariners are advised to navigate with caution in the area.

Chart temporarily affected - Aus 256**292(T)/2026 AUSTRALIA - NORTHERN TERRITORY - Van Diemen Gulf - Abbott Shoal - Light buoy unlit**

Australian Maritime Safety Authority Auscoast Warning 72/2026

The port lateral light buoy, *Fl(4)R. 16s* (11° 49'.71 S 131° 31'.69 E), is unlit.

Chart temporarily affected - Aus 720**293(T)/2026 AUSTRALIA - WESTERN AUSTRALIA - Carnarvon - Light buoy restored**

Former Notice - 113(T)/2026 is cancelled
Department of Transport WA Notice 6712/2026

Cancel this notice on receipt.

Chart formerly affected - Aus 73 - Aus 331**294(T)/2026 AUSTRALIA - WESTERN AUSTRALIA - Eugene McDermott Shoal to Scott Reef - Scientific instruments recovered**

Former Notice - 306(T)/2025 is cancelled
JASCO Applied Sciences (Australia)

Cancel this notice on receipt.

Chart formerly affected - Aus 319 - Aus 322**295(T)/2026 AUSTRALIA - WESTERN AUSTRALIA - Gascoyne River - Flooding; obstructions**

Department of Transport WA

Flooding from Tropical Cyclone Narelle has transported debris into coastal waters from the mouth of the Gascoyne River (24° 52'.3 S 113° 37'.3 E).

Mariners are advised to navigate with caution in the area.

Chart temporarily affected - Aus 73 - Aus 331**296(T)/2026 AUSTRALIA - WESTERN AUSTRALIA - Glomar Shoal - FPSO**

Woodside Energy Ltd

The lit FPSO *Okha Mo(U)15s* (19° 35'.36 S 116° 26'.78 E) is off station for maintenance; an unlit riser turret mooring remains in situ.

NOTE; FPSO is shown as *Wanaea* on Aus4723

Chart temporarily affected - Aus 327 - Aus 4603 (INT 603) - Aus 4708 (INT 708) - Aus 4722 (INT 722) - Aus 4723 (INT 723)

297(T)/2026 AUSTRALIA - WESTERN AUSTRALIA - Lowendal Islands - Varanus Island - Light beacons relit
Former Notice - 797(T)/2025 is cancelled
 Pilbara Ports Authority

Cancel this notice on receipt.

Chart formerly affected - Aus 65 - Aus 742

298(T)/2026 AUSTRALIA - WESTERN AUSTRALIA - Montebello Islands - Drilling operations completed northwestwards

Former Notice - 119(T)/2026 is cancelled
 MODU *Transocean Endurance*

Cancel this notice on receipt.

Chart formerly affected - Aus 328

299(T)/2026 AUSTRALIA - WESTERN AUSTRALIA - Montebello Islands - Subsea operations northwestwards
 DOF Australia

Vessel *Skandi Singapore* is conducting subsea operations within a 3M radius of position 20° 06'.47 S 115° 03'.39 E.

Mariners are advised to navigate with caution in the area.

Chart temporarily affected - Aus 328

300(T)/2026 AUSTRALIA - WESTERN AUSTRALIA - Muiron Islands - Survey operations completed northwards

Former Notice - 216(T)/2026 is cancelled
 Woodside Energy Ltd , Australian Maritime Safety Authority

Cancel this notice on receipt.

Chart formerly affected - Aus 328 - Aus 329 - Aus 744

301(T)/2026 AUSTRALIA - WESTERN AUSTRALIA - Onslow - Beadon Bay - Light buoy unlit

Department of Transport WA NTM 6754(T)-2026

The port lateral light buoy, *Fl.R.3s No4* (21° 37'.58 S 115° 07'.78 E), is unlit.

Mariners are advised to navigate with caution in the area.

Chart temporarily affected - Aus 64

302(T)/2026 AUSTRALIA - WESTERN AUSTRALIA - Scott Reef - Scientific instruments

JASCO Applied Sciences (Australia)

Subsurface scientific instruments exist as follows:

<i>Position</i>	<i>Remarks</i>
13° 59'.09 S 121° 46'.42 E	1.5m above seabed
13° 59'.60 S 121° 58'.93 E	1.5m above seabed
14° 02'.07 S 122° 00'.98 E	1.5m above seabed
14° 02'.31 S 121° 58'.33 E	20m below the surface
14° 31'.15 S 121° 37'.64 E	1.5m above seabed.

Mariners are advised to navigate with caution in the area.

Chart temporarily affected - Aus 322

303(T)/2026 AUSTRALIA - SOUTH AUSTRALIA - Kangaroo Island - Survey operations complete*Former Notice - 68(T)/2026 is cancelled*

Fugro

Cancel this notice on receipt.

Chart formerly affected - Aus 343 - Aus 346 - Aus 780**304(P)/2026 AUSTRALIA - SOUTH AUSTRALIA - Kangaroo Island - Shoaling**

Fugro

Latest surveys indicate shoaler depths than those charted exist in an area bounded by the following positions:

36° 07'.31 S 137° 22'.86 E

36° 21'.14 S 137° 22'.66 E

36° 20'.48 S 137° 14'.81 E

36° 07'.77 S 136° 43'.28 E

36° 03'.44 S 136° 45'.15 E

Mariners are advised to navigate with caution in the area.

ENC products have been updated, paper charts will be updated in due course.

Chart which will be affected - Aus 346 - Aus 485 - Aus 4709 (INT 709)**305(T)/2026 AUSTRALIA - VICTORIA - Port Phillip - St Kilda - Light buoy off station**

Parks Victoria Notice 147(T)/2026

The special light buoy, *F(4)Y.10s RMYSE* (37° 52'.16 S 144° 57'.81 E), is off station.

Mariners are advised to navigate with caution in the area.

Chart temporarily affected - Aus 155**306(T)/2026 AUSTRALIA - VICTORIA - Port Phillip - Wreck salvaged***Former Notice - 176(T)/2026 is cancelled*

Ports Victoria Notice 201(T)/2026

Cancel this notice on receipt.

Chart formerly affected - Aus 143**307(T)/2026 AUSTRALIA - VICTORIA - Port Phillip - Swan Bay - Light relit***Former Notice - 78(T)/2026 is cancelled*

Parks Victoria Notice 183/2026

Cancel this notice on receipt.

Chart formerly affected - Aus 143**308(T)/2026 AUSTRALIA - VICTORIA - Port Phillip - Altona - Light buoy restored***Former Notice - 77(T)/2026 is cancelled*

Parks Victoria Notice 197/2026

Cancel this notice on receipt.

Chart formerly affected - Aus 155

309(T)/2026 AUSTRALIA - VICTORIA - Western Port - North Arm - Scientific instrument recovered

Former Notice - 1007(T)/2025 is cancelled
Parks Victoria Notice 161(T)/2026

Cancel this notice on receipt.

Chart formerly affected - Aus 151**310(T)/2026 AUSTRALIA - BASS STRAIT - Military exercise**

Department of Defence

During the period 6 April to 6 May 2026, a military exercise consisting of multiple military ships, fixed and rotary wing aircraft will be conducted in an area bounded by the following positions:

38° 36'.0 S 144° 31'.8 E

40° 24'.6 S 144° 44'.4 E

40° 51'.6 S 148° 24'.6 E

41° 58'.8 S 148° 24'.6 E

42° 01'.8 S 149° 22'.8 E

38° 12'.6 S 149° 02'.4 E.

Military assets may act in a random and dynamic manner, including military aircraft operating at low altitude. However, at all time military ships and aircraft will act with due regard to other vessels and users utilising the area.

Mariners are advised to navigate with caution in the area.

Chart temporarily affected - Aus 151 - Aus 179 - Aus 181 - Aus 349 - Aus 357 - Aus 487 - Aus 766 - Aus 767 - Aus 790 - Aus 798 - Aus 800 - Aus 801 - Aus 802 - Aus 4601 (INT 601) - Aus 4709 (INT 709)

311(T)/2026 AUSTRALIA - TASMANIA - Great Oyster Bay - Fish aggregating device removed

Marine and Safety Tasmania Notice M106(T)/2026

The special light buoy, *Fl. Y. 3s FAD* (42° 10'.40 S 148° 10'.72 E), has been temporarily removed.

Chart temporarily affected - Aus 766**312(T)/2026 AUSTRALIA - TASMANIA - River Derwent - Punched Reef - Light buoy unlit**

Marine and Safety Tasmania Notice M109(T)/2026

The special light buoy, *Q. Y BYC2* (42° 53'.90 S 147° 22'.85 E), is unlit.

Chart temporarily affected - Aus 171**313(T)/2026 AUSTRALIA - TASMANIA - Robbins Island to Rocky Cape - Scientific instruments recovered northeastwards**

Former Notice - 226(T)/2026 is cancelled

Maritime and Safety Tasmania Notice M124(T)/2026

Cancel this notice on receipt.

Chart formerly affected - Aus 487 - Aus 790**314(T)/2026 SOLOMON ISLANDS - Russell Islands - Live firing completed southwards**

Former Notice - 425(T)/2025 is cancelled

Solomon Islands Maritime Authority Notice 10/2025

Cancel this notice on receipt.

Chart formerly affected - SLB 303 - SLB 304

315(T)/2026 AUSTRALIA - TEMPORARY AND PRELIMINARY NOTICES

Former Notice - 38(T)/2026 is cancelled
 Australian Hydrographic Office

<i>Notice</i>	<i>Charts affected</i>	<i>Locality and Subject</i>
		BASS STRAIT
		<i>Hogan Group</i>
158/2025	Aus357 487	Scientific instrument northeastwards
159/2025	Aus357 487	Light float eastwards
		<i>Kent Group</i>
160/2025	Aus357 487 802	Scientific instruments northwards
754/2022	Aus357 487	Racon non operational
891/2025	Aus487	Mooring buoys
310/2026	Aus151 179 181 349 357 487 766 767 790 798 800 801 802 4601 4709	Military exercise
		CORAL SEA
		<i>Diamond Islets</i>
788/2022	Aus614	Shoaling
		<i>Middleton Reef</i>
21/2021	Aus618	Unexploded ordnance
		NEW SOUTH WALES
		<i>Brooms Head</i>
987/2025	Aus812 813	Fish aggregating devices off station eastwards
		<i>Bulli</i>
102/2026	Aus808	Obstruction eastwards
		<i>Cape Banks</i>
243/2026	Aus808	Fish aggregating device off station eastwards
		<i>Cape Banks to Cabbage Tree Bay</i>
701/2023	Aus200 489 809	Scientific instruments eastwards
		<i>Cape Byron</i>
709/2016	Aus813	Obstructions eastwards
880/2021	Aus813	Light buoy off station northwards
		<i>Clarence River</i>
808/2023	Aus222	Scientific instrument
742/2025	Aus222	Light buoys
		<i>Coffs Harbour to Ballina</i>
146/2026	Aus812 813	Artificial reefs
		<i>Crabbes Creek Beach</i>
133/2023	Aus813	Wreck eastwards
		<i>Green Bluff</i>
105/2024	Aus812	Scientific instruments eastwards
		<i>Jervis Bay</i>
604/2020	Aus807 808	Light buoy
285/2026	Aus489 806 807 808 4601 4602	Live firing southeastwards
		<i>Kurnell Peninsula</i>
286/2026	Aus198	Light buoy off station eastwards
		<i>Maroubra Bay</i>
1030/2025	Aus808	Scientific instrument
		<i>Merimbula Bay to Broulee Island</i>
997/2020	Aus806 807	Scientific instruments

315(T)/2026 AUSTRALIA - TEMPORARY AND PRELIMINARY NOTICES

<i>Notice</i>	<i>Charts affected</i>	<i>Locality and Subject</i>
106/2024	Aus806 807	<i>Montague Island</i> Scientific instruments
244/2026	Aus809	<i>Newcastle</i> Construction works
105/2021 61/2022	Aus200 Aus200	<i>Port Jackson</i> Jetties ruined Scientific instruments
147/2026	Aus811	<i>Port Macquarie</i> Light buoy off station eastwards
900/2024 826/2025	Aus209 Aus209	<i>Port Stephens</i> Scientific instrument Light beacon destroyed
245/2026	Aus489 4060 4601 4602	<i>QUEENSLAND</i> Cable laying operations eastwards
107/2024	Aus810	<i>Seal Rocks</i> Scientific instruments
942/2025	Aus200	<i>Sydney Harbour</i> Wreck
246/2026	Aus198 489 808 4060 4601 4602	<i>Sydney to Eden</i> Cable laying operations eastwards
727/2022	Aus489 806 807 808 809 810 4601 4602	<i>Tathra to Seal Rocks</i> Obstructions
870/2025	Aus809	<i>The Entrance</i> Shoaling eastwards
532/2024	Aus23	NORTHERN TERRITORY <i>Apsley Strait</i> Light buoys off station
909/2024	Aus309 310 311	<i>Bathurst Island</i> Tide gauges; buoys westwards
62/2026	Aus309	<i>Beagle Gulf</i> Fish aggregating devices
877/2025	Aus25	<i>Charles Point</i> Obstruction northeastwards
20/2026	Aus718 719	<i>Cuthbert Point</i> Tide gauges; light buoys northeastwards
371/2025 491/2025 667/2025 753/2025 913/2025 996/2025	Aus26 Aus26 Aus26 Aus26 Aus26 Aus25 26	<i>Darwin</i> Scientific instruments Harbour works; dredging operations Dredging operations Light buoy removed Scientific instruments Scientific instruments
668/2025	Aus316	<i>Emu Reefs</i> Obstruction
39/2025	Aus309 316	<i>Fish Reef</i> Light unlit

315(T)/2026 AUSTRALIA - TEMPORARY AND PRELIMINARY NOTICES

<i>Notice</i>	<i>Charts affected</i>	<i>Locality and Subject</i>
914/2025	Aus719	<i>Goulburn Islands</i> Shoaling
948/2025	Aus719	Wreck
153/2026	Aus14	<i>Groote Eylandt</i> Mooring buoys
205/2026	Aus14	Mooring buoys
448/2025	Aus310	<i>Lynedoch Bank</i> Light buoy northwestwards
40/2025	Aus18 721	<i>Orontes Reef</i> Obstruction
292/2026	Aus720	<i>Van Diemen Gulf</i> Light buoy unlit
1036/2025	Aus309 314 315 316 319	WESTERN AUSTRALIA Geotechnical and geophysical operations westwards
52/2026	Aus490 816 818	QUEENSLAND <i>Breaksea Spit</i> Light buoy unlit
213/2018	Aus236	<i>Bribie Island</i> Shoaling
105/2026	Aus236	Dredging operations
877/2022	Aus237	<i>Brisbane River</i> Wreck
99/2023	Aus237	Obstruction; light buoy
901/2024	Aus237	Scientific instrument
135/2025	Aus237	Light buoys
202/2026	Aus237	Harbour works
247/2026	Aus237	Construction works
288/2026	Aus242 817 818	<i>Bundaberg</i> Dredging operations
743/2024	Aus262	<i>Cairns</i> Wreck
289/2026	Aus236 815	<i>Caloundra Head</i> Scientific instruments
366/2025	Aus248 820	<i>Cape Clinton Peninsula</i> Survey operations
247/2021	Aus256	<i>Cape Ferguson</i> Scientific instrument
1031/2025	Aus826	<i>Cape Upstart</i> Wreck northeastwards
745/2025	Aus490 819	<i>Capricorn Group</i> Scientific instrument eastwards
148/2026	Aus256 827	<i>Cleveland Bay</i> Scientific instruments
98/2025	Aus236	<i>Deception Bay</i> Light buoy
248/2026	Aus245 246 265 815 816 817 818	<i>Double Island Point to Yeppoon</i> Obstructions; nav aids off station

315(T)/2026 AUSTRALIA - TEMPORARY AND PRELIMINARY NOTICES
819 820

<i>Notice</i>	<i>Charts affected</i>	<i>Locality and Subject</i>
990/2025	Aus258 828 829	<i>Dunk (Coonanglebah) Island</i> Scientific instrument southeastwards
968/2024	Aus4603	<i>Duyfken Point</i> Scientific instrument westwards
72/2018	Aus830	<i>Fitzroy Island</i> Light buoys
738/2021	Aus265	<i>Fitzroy River</i> Scientific instrument
980/2021	Aus819	Scientific instrument
484/2023	Aus265 819	Scientific instrument
149/2026	Aus265	Beacon destroyed
741/2021	Aus817	<i>Fraser Island</i> Shoaling
64/2021	Aus245	<i>Gladstone</i> Harbour works
908/2025	Aus245 819	Harbour works; restricted area
150/2026	Aus246	Light beacon destroyed
108/2026	Aus258	<i>Gladys Inlet</i> Light buoy off station
255/2025	Aus814	<i>Gold Coast</i> Light buoy off station eastwards
490/2022	Aus814	<i>Gold Coast Seaway</i> Light buoy destroyed eastwards
357/2023	Aus814	Wreck eastwards
1075/2025	Aus821 825	<i>Great Barrier Reef</i> Shoaling
250/2024	Aus817	<i>Great Sandy Strait</i> Light buoys
59/2026	Aus817	Scientific instruments
360/2023	Aus259	<i>Hinchinbrook Channel</i> Light buoy off station
361/2023	Aus259 828	<i>Hinchinbrook Island</i> Light beacon destroyed
249/2021	Aus260 367 822	<i>Holt Island to Hexham Island</i> Shoaling
548/2019	Aus821 824	<i>Hydrographers Passage</i> Shoaling
488/2019	Aus303	<i>Karumba</i> Wreck northwards
408/2025	Aus303	Scientific instrument
828/2025	Aus6	Light buoys repositioned
28/2025	Aus252	<i>Laguna Quays</i> Shoaling
173/2025	Aus252	Lights unlit
611/2025	Aus250	<i>Mackay</i> Light buoys
872/2025	Aus249 250	Virtual AIS

315(T)/2026 AUSTRALIA - TEMPORARY AND PRELIMINARY NOTICES
204/2026 Aus250 Scientific instrument

<i>Notice</i>	<i>Charts affected</i>	<i>Locality and Subject</i>
291/2026	Aus256	<i>Magnetic Island</i> Wreck
813/2023	Aus236	<i>Moreton Bay</i> Obstruction; light buoy
528/2024	Aus236	Scientific instrument
257/2025	Aus236 237	Naval aids destroyed or off station; depths
551/2025	Aus236	Wreck
829/2025	Aus236 237	Scientific instruments
830/2025	Aus236	Light beacon unlit
873/2025	Aus236	Scientific instruments
470/2017	Aus816	<i>North Gardner Bank</i> Foul ground
408/2024	Aus236 814	<i>North Stradbroke Island</i> Scientific instruments
410/2025	Aus814	Light buoy off station eastwards
665/2025	Aus826	<i>Old Reef</i> Rock
409/2024	Aus819	<i>One Tree Island to Heron Island</i> Scientific instruments
422/2022	Aus814	<i>Palm Beach</i> Light buoy off station
874/2025	Aus260 820 822	<i>Pearl Bay</i> Obstruction
944/2025	Aus236 814 815 4602	<i>Point Cartwright to Lord Howe Rise</i> Cable laying operations
151/2026	Aus250	<i>Slade Island</i> Shoaling southeastwards
67/2023	Aus256	<i>Townsville</i> Shoaling
68/2023	Aus255 256 268 825 826 827 828 829	Obstructions
1026/2022	Aus826	<i>Upstart Bay</i> Obstructions
875/2025	Aus826	Light buoys off station
711/2024	Aus262	<i>Yorkeys Knob</i> Shoaling; light buoy
147/2025	Aus348	SOUTH AUSTRALIA <i>Cape Buffon</i> Light unlit
923/2025	Aus346	<i>Cape Gantheaume</i> Shoaling southwards
573/2024	Aus777	<i>Cape Hardy</i> Scientific instruments
1000/2024	Aus777	Geotechnical operations
168/2026	Aus778	<i>Cowleds Landing</i> Drilling operations southwards
		<i>Denial Bay</i>

315(T)/2026 AUSTRALIA - TEMPORARY AND PRELIMINARY NOTICES
337/2024 Aus120 341 Obstruction

<i>Notice</i>	<i>Charts affected</i>	<i>Locality and Subject</i>
		<i>Gulf St Vincent</i>
81/2021	Aus781	Artificial reef
757/2024	Aus130 485 781	Scientific instrument
758/2024	Aus130 485 781	Scientific instruments
59/2025	Aus781	Scientific instrument
501/2025	Aus485 780	Topmark missing
801/2025	Aus781	Scientific instruments
		<i>Island Point</i>
502/2025	Aus776 777	Light beacons damaged and unlit
		<i>Kangaroo Island</i>
168/2024	Aus780	Wreck
304/2026	Aus346 485 4709	Shoaling
		<i>Port Adelaide</i>
291/2021	Aus130	Shoaling
622/2024	Aus130 485 781	Light beacon destroyed
921/2024	Aus130 485 781	Scientific instruments
629/2025	Aus130	Scientific instruments
955/2025	Aus130	Light buoy off station; light buoy unlit
1051/2025	Aus130	Harbour works
		<i>Port Bonython</i>
1027/2023	Aus136	Scientific instrument
		<i>Port Lincoln</i>
724/2023	Aus134	Light beacon destroyed
		<i>Shoalwater Point to Point Riley</i>
261/2026	Aus777 778	Survey operations
		<i>Spencer Gulf</i>
574/2024	Aus136	Scientific instruments
169/2026	Aus136 778	Light buoy unlit
262/2026	Aus778	Geotechnical operations westwards
		<i>Wallaroo</i>
587/2022	Aus777	Harbour works
		<i>Yorke Peninsula</i>
459/2024	Aus780 781	Wreck
		TASMAN SEA
		<i>Tasman Basin</i>
741/2024	Aus4601	Light buoy off station
		TASMANIA
		<i>Ansons Bay</i>
724/2025	Aus767	Beacon destroyed
		<i>Burnie</i>
424/2025	Aus163	Aquaculture trial and research area northwards
		<i>D'Entrecasteaux Channel</i>
522/2020	Aus173	Harbour works; light buoys
		<i>Devonport</i>
263/2018	Aus164	Shoaling
916/2022	Aus164	Virtual AIS
83/2023	Aus164	Harbour works
375/2023	Aus164	Berth
520/2025	Aus164	Light beacon destroyed

315(T)/2026 AUSTRALIA - TEMPORARY AND PRELIMINARY NOTICES

<i>Notice</i>	<i>Charts affected</i>	<i>Locality and Subject</i>
343/2024	Aus179	<i>Franklin Sound</i> Wreck
311/2026	Aus766	<i>Great Oyster Bay</i> Fish aggregating device removed
167/2023	Aus179	<i>King Island</i> Platform, submarine cable, prohibited area
1009/2025	Aus487	<i>Low Head</i> Obstruction northwestwards
876/2023	Aus177 792	<i>Macquarie Harbour</i> Scientific instruments
85/2024	Aus177	Lit barge
133/2024	Aus177 792	Scientific instrument
134/2024	Aus177 792	Scientific instruments
69/2025	Aus177	Scientific instrument
1092/2025	Aus177	Scientific instruments
673/2021	Aus766 797	<i>Maria Island</i> Scientific instruments
1058/2025	Aus766 797	<i>Mercury Passage</i> Scientific instrument
1010/2025	Aus164	<i>Moorland Point to Claytons Bay</i> Scientific instruments northwards
677/2021	Aus171	<i>North West Bay</i> Mooring area
627/2016	Aus171 796	<i>Pipe Clay Head to Pitt Water</i> Scientific instruments
722/2021	Aus167	<i>Port Dalrymple</i> Harbour works
685/2025	Aus167	Beacon destroyed
639/2023	Aus171 173	<i>River Derwent</i> Kelp longlines; light buoys
113/2025	Aus171 796	Light beacon destroyed
1011/2025	Aus171	Harbour works
80/2026	Aus171 173 795 796	Sea trials
312/2026	Aus171	Light buoy unlit
687/2025	Aus797	<i>Spring Bay</i> Pipe laying operations
TIMOR SEA		
206/2026	Aus309 315 316 318	<i>Flat Top Bank</i> Survey operations southwards
207/2026	Aus309 315 316	Scientific instruments southwards
669/2025	Aus309 310 311 315	<i>Margaret Harries Banks</i> Survey operations
1037/2025	Aus312	<i>Sahul Banks</i> Subsea operations
1077/2025	Aus312	Subsea operations
TORRES STRAIT		
337/2021	Aus841	<i>Boigu Island</i> Shoaling

315(T)/2026 AUSTRALIA - TEMPORARY AND PRELIMINARY NOTICES
27/2022 Aus841 Shoaling

<i>Notice</i>	<i>Charts affected</i>	<i>Locality and Subject</i>
866/2024	Aus700 842	<i>Cook Reef</i> Scientific instruments southwards
1049/2020	Aus842	<i>Deliverance Island</i> Shoaling
1025/2021	Aus839	<i>Great North East Channel</i> Scientific instrument
334/2025	Aus293 299	<i>Holmes Reef</i> Wreck
253/2026	Aus299	<i>Horn Island to Thursday Island</i> Shoaling
604/2024	Aus700 839 842	<i>Richardson Reef</i> Scientific instruments
17/2024	Aus377 840	<i>Yorke Islands</i> Scientific instrument
VICTORIA		
630/2022	Aus140 348 349	<i>Cape Duquesne</i> Scientific instruments
231/2025	Aus349 487	<i>Cape Otway</i> Artificial reef southwards
659/2024	Aus357 487 802	<i>Corner Inlet</i> Scientific instruments eastwards
263/2026	Aus357	<i>Golden Beach</i> Survey operations
268/2025	Aus181	<i>Kate Kearney Channel to McLoughlins Entrance</i> Shoaling
747/2022	Aus357 487	<i>Ninety Mile Beach</i> Traffic separation scheme southwestwards
112/2023	Aus357 487	Virtual AIS southeastwards
376/2024	Aus357 487 4601	Platform unlit eastwards
62/2025	Aus357 487	Geotechnical operations
152/2025	Aus357 487 4060 4601	Platform unlit eastwards
420/2025	Aus357 487 4601	Platform unlit eastwards
505/2025	Aus357 487	Scientific instrument southwards
632/2025	Aus357	Scientific instruments southwards
683/2025	Aus357 487	Scientific instruments southwards
721/2025	Aus357 487	Scientific instruments southwards
956/2025	Aus357 487	Scientific instruments southwards
957/2025	Aus357 487 798 800 802	Scientific instruments southwards
1085/2025	Aus357 487	Scientific instrument southwards
34/2026	Aus357	Drill rig eastwards
127/2026	Aus357 802	Survey operations
128/2026	Aus181 357 802	Survey operations
507/2025	Aus349	<i>Port Campbell</i> Subsea operations southwards
634/2025	Aus349	Well plug and abandonment works southwards
925/2025	Aus349	Survey operations southwestwards
1055/2025	Aus349	Mooring buoy southwards
36/2026	Aus349	Drilling operations southwestwards
129/2026	Aus349	Scientific instruments southwestwards

Port Fairy

315(T)/2026 AUSTRALIA - TEMPORARY AND PRELIMINARY NOTICES
271/2025 Aus349 Scientific instrument southwards

<i>Notice</i>	<i>Charts affected</i>	<i>Locality and Subject</i>
310/2025	Aus143 155 157	<i>Port Philip</i> Sampling works
350/2021	Aus153 157	<i>Port Phillip</i> Scientific instruments
409/2021	Aus157	Scientific instrument
618/2021	Aus155	Obstructions
1033/2021	Aus155	Buoy
294/2022	Aus143 157	Exclusion zone
340/2024	Aus143	Harbour works
504/2024	Aus157	Light buoy off station
933/2024	Aus143 144	Shoaling southwards
934/2024	Aus155	Exclusion zone
196/2025	Aus143	Wreck
348/2025	Aus155	Obstruction
574/2025	Aus143 144 155 157	Scientific instruments
637/2025	Aus157	Scientific instrument
638/2025	Aus157	Scientific instruments
1056/2025	Aus143 155 157	Geotechnical operations eastwards
130/2026	Aus157	Light beacon unlit
175/2026	Aus143	Light buoy off station northeastwards
305/2026	Aus155	Light buoy off station
465/2023	Aus143 155	<i>Port Phillip Bay</i> Wreck
235/2025	Aus140	<i>Portland</i> Shoaling
313/2025	Aus140	Light unlit
67/2025	Aus140 349	<i>Portland Bay to Childers Cove</i> Scientific instruments southwards
177/2026	Aus801 802	<i>Warratah Bay</i> Scientific instrument
579/2025	Aus349	<i>Warrnambool</i> Scientific instrument southwards unlit
962/2025	Aus349	Scientific instruments southwards
664/2021	Aus151	<i>Western Port</i> Shoaling
859/2021	Aus151	Exclusion zone
625/2024	Aus151	Scientific instrument
1038/2025	Aus763	WESTERN AUSTRALIA <i>Archipelago of the Recherche</i> Shoaling
154/2026	Aus119 762	Shoaling
789/2025	Aus119	<i>Bandy Creek Boat Harbour</i> Light beacon destroyed
790/2025	Aus119	Shoaling
218/2025	Aus314 319 4722	<i>Barracouta Shoal</i> Well plug and abandonment works eastwards
291/2019	Aus328	<i>Barrow Island</i> Well abandonment works northwestwards
998/2025	Aus65 742 743	Light beacons unreliable; light beacon unlit
112/2026	Aus328	Subsea operations; survey operations northwestwards
155/2026	Aus65	Light unlit
254/2026	Aus65 327 328 742	Platform unlit

315(T)/2026 AUSTRALIA - TEMPORARY AND PRELIMINARY NOTICES

<i>Notice</i>	<i>Charts affected</i>	<i>Locality and Subject</i>
223/2024	Aus745 746	<i>Bateman Bay to Bills Bay</i> Scientific instruments
535/2023 949/2025	Aus730 Aus728	<i>Bonaparte Archipelago</i> Obstruction Wreck
1040/2025	Aus50	<i>Broome</i> Obstruction westwards
820/2023	Aus319 320 4603 4722	<i>Browse Island</i> Light altered northwestwards
623/2022 336/2025	Aus115 Aus115	<i>Bunbury</i> Harbour works Harbour works
297/2024 255/2026	Aus335 Aus4708 4709 4710	<i>Cape Naturaliste</i> Scientific instrument northwestwards Cable laying operations westwards
224/2024 415/2025	Aus328 329 745 Aus328 329 745	<i>Cape Range</i> Scientific instruments Light
767/2023 304/2025 256/2026	Aus73 Aus73 Aus73	<i>Carnarvon</i> Obstructions Shoaling Shoaling
70/2024 209/2026	Aus117 Aus117	<i>Cockburn Sound</i> Light beacon destroyed Wind turbine
210/2026	Aus332	<i>Coronation Beach to Drummond Cove</i> Scientific instruments
822/2023 179/2025 673/2025 1041/2025	Aus57 Aus57 Aus57 59 Aus57 60	<i>Dampier</i> Scientific instrument Obstruction Harbour works Wreck
25/2024 493/2024 792/2025 157/2026 257/2026	Aus327 742 Aus327 742 Aus57 327 742 Aus327 Aus327	<i>Dampier Archipelago</i> Light buoy northwards Mooring buoy unlit northwards Subsea operations northwards Well plug and abandonment works; well intervention works northwestwards Survey operations northwards
951/2025	Aus327 328 329 744	<i>Dampier Archipelago to Muiron Islands</i> Subsea operations northwestwards
293/2023	Aus57 327	<i>Dampier Archipelago</i> Scientific instrument northwards
836/2025	Aus65 327 328 742	<i>Double Island</i> Light unlit
1078/2015	Aus318 319 727 728	<i>East Holothuria Reef</i> Shoaling
		<i>Enderby Island</i>

315(T)/2026 AUSTRALIA - TEMPORARY AND PRELIMINARY NOTICES
212/2026 Aus57 Mooring buoys northwards

<i>Notice</i>	<i>Charts affected</i>	<i>Locality and Subject</i>
263/2025	Aus119 762 763 4709	<i>Esperance Bay to Eastern Group</i> Survey operations; scientific instruments
1079/2025	Aus319	<i>Eugene McDermott Shoal</i> Steel truss
222/2025	Aus319 4722 4723	<i>Eugene McDermott Shoal to Exmouth Plateau</i> Cable laying operations
181/2025	Aus744 745	<i>Exmouth</i> Scientific instruments
920/2025	Aus4723	<i>Exmouth Plateau</i> Survey operations; obstructions
1042/2025	Aus4723	Survey operations
1080/2025	Aus4723	Subsea operations
160/2026	Aus4723	Subsea operations
1065/2023	Aus112 117	<i>Fremantle</i> Scientific instrument
988/2024	Aus112	Scientific instrument
367/2023	Aus332	<i>Gantheaume Bay</i> Scientific instrument northwestwards
295/2026	Aus73 331	<i>Gascoyne River</i> Flooding; obstructions
1032/2022	Aus755	<i>Geographe Bay</i> Scientific instruments
715/2025	Aus81	<i>Geraldton</i> Scientific instruments
795/2025	Aus81	Dredging operations; survey operations
1082/2025	Aus81	Scientific instruments
296/2026	Aus327 4603 4708 4722 4723	<i>Glomar Shoal</i> FPSO
953/2025	Aus319	<i>Goeree Shoal</i> Mooring buoy
105/2025	Aus754	<i>Hilarys Boat Harbour</i> Scientific instrument westwards
264/2025	Aus754 4060 4070 4708 4709	Scientific instrument westwards
560/2025	Aus116 337	<i>Hopetoun</i> Shoaling
990/2024	Aus332	<i>Houtman Abrolhos</i> Fish aggregating device
161/2026	Aus4708 4709 4710	<i>Indian Ocean</i> Cable laying operations
1043/2025	Aus40 732 733	<i>Kingfisher Islands</i> Survey operations
627/2023	Aus324	<i>Lagrange Bay</i> Scientific instruments
759/2025	Aus112 117 753 754 755	<i>Lancelin to Garden Island</i> Military exercises

315(T)/2026 AUSTRALIA - TEMPORARY AND PRELIMINARY NOTICES

31/2024	Aus754	<i>Laurance Reef to Quinns Rocks</i> Scientific instruments
<i>Notice</i>	<i>Charts affected</i>	<i>Locality and Subject</i>
900/2023	Aus65 742	<i>Lowendal Islands</i> Light altered
29/2026	Aus742	Scientific instrument northeastwards
162/2026	Aus65	Light beacon destroyed
215/2026	Aus65 742	Subsea operations
676/2025	Aus328	<i>Montebello Islands</i> Scientific instrument northwestwards
163/2026	Aus328	Subsea operations northwestwards
299/2026	Aus328	Subsea operations northwestwards
1044/2025	Aus328 329	<i>Muiron Islands</i> Subsea operations northwestwards
1036/2022	Aus754	<i>Mullaloo</i> Scientific instruments
63/2026	Aus130 143 198 335 336 343 346 348 349 357 485 487 489 754 780 781 801 802 808 4601 4602 4708 4709 4710	<i>NEW SOUTH WALES</i> Cable laying operations
217/2026	Aus745	<i>Ningaloo Reef</i> Scientific instruments westwards
918/2024	Aus328 329 744 745 4060 4070 4071 4708 4723	<i>North West Cape</i> Light unlit; light established
498/2025	Aus328 329 744	Subsea operations northwards
218/2026	Aus328 329 744 4723	Obstruction; light buoy northwards
33/2024	Aus745	<i>Norwegian Bay</i> Beacon obscured
301/2026	Aus64	<i>Onslow</i> Light buoy unlit
922/2025	Aus112 115 116 117 335 336 754 755 4708 4709 4710	<i>Perth to Cape Leeuwin</i> Survey operations westwards
999/2024	Aus55 326	<i>Port Walcott</i> Shoaling
620/2024	Aus118	<i>Princess Royal Harbour</i> Marine farm; light buoys
678/2025	Aus50 324	<i>Roebuck Bay</i> Shoaling westwards
212/2020	Aus754	<i>Rottneest Island</i> Scientific instruments northwestwards
774/2023	Aus112	Rock
167/2024	Aus112 754	Scientific instrument northwards
55/2025	Aus112	Entry prohibited
229/2025	Aus754	Scientific instruments northwestwards
1047/2025	Aus754	Light buoy off station; AIS inoperative westwards
302/2026	Aus322	<i>Scott Reef</i> Scientific instruments
167/2026	Aus116 117 754 755	<i>Shoalwater Bay</i> Mooring buoys westwards

315(T)/2026 AUSTRALIA - TEMPORARY AND PRELIMINARY NOTICES

<i>Notice</i>	<i>Charts affected</i>	<i>Locality and Subject</i>
1048/2025	Aus112 117	<i>Success Bank</i> Shoaling
265/2024	Aus64 328 743	<i>Thevenard Island</i> Obstruction
341/2025	Aus64 328 743 744	Subsea operations
679/2025	Aus64 743	Light buoy altered
630/2023	Aus118	<i>Torbay to King George Sound</i> Scientific instruments
459/2025	Aus65 742	<i>Varanus Island</i> Shoaling
621/2024	Aus336	<i>Wilson Head</i> Scientific instruments
INDIAN OCEAN		
183/2022	Aus920	<i>Christmas Island</i> Mooring buoy off station
904/2023	Aus607	<i>Cocos Islands</i> Light buoy
867/2023	Aus4708 4723	<i>Roo Rise</i> Light buoy off station
799/2025	Aus322 400 608 4060 4070 4071 4603 4708 4722 4723	<i>Seringapatam Reef to Christmas Island</i> Survey operations
NEW ZEALAND		
1093/2025	Aus489 4060 4601 4602	<i>Australia</i> Submarine cable removal
PACIFIC OCEAN		
785/2022	Aus4604	Scientific instruments
PAPUA NEW GUINEA		
826/2020	PNG506 507 623	<i>Batumata Point</i> Shoaling
789/2018	Aus4622	<i>Bismarck Sea</i> Fish aggregating devices
278/2023	PNG516 637	<i>Boli Point</i> Light unlit
279/2023	PNG516 637	<i>Bomatu Point</i> Light unlit
327/2022	PNG509 512	<i>Bonvouloir Islands</i> Light unlit
974/2023	Aus399 4622 PNG397 684	<i>Buka Passage</i> Light beacon unlit
251/2026	Aus4622 PNG523	<i>Cape Gerhards</i> Light unlit
252/2026	PNG647 648	<i>Caution Bay</i> Light buoy off station
		<i>Dauan Island</i>

315(T)/2026 **AUSTRALIA - TEMPORARY AND PRELIMINARY NOTICES**
668/2020 Aus841 Light altered

<i>Notice</i>	<i>Charts affected</i>	<i>Locality and Subject</i>
911/2025	PNG545 554 680	<i>Dawapia (The Beehives)</i> light beacon unlit
829/2022	PNG509	<i>Dekatuwe (Bright) Island</i> Light beacon unlit
282/2023	PNG509 513	<i>Galogalohi (Gallows) Reef</i> Light unlit
346/2019 794/2022	PNG643 Aus4622 PNG386 521 522 523	<i>Huon Gulf</i> Light buoy off station Fish aggregating devices
830/2022	PNG508 509 628	<i>Kanaweya (Shortland) Reefs to Nuakata Passage</i> Light beacons unlit
283/2023	PNG515 516 637	<i>Kitava Island</i> Light unlit
445/2025	Aus4622 PNG386 387	<i>Kitumala (Fortification) Point</i> Light unlit
832/2025	Aus4060 4604 PNG511	<i>Loa Islet</i> Light unlit
286/2019	PNG646	<i>Madang Harbour</i> Shoaling
118/2021	Aus399 4604 4622 PNG397 684	<i>Madehas Island</i> Light unlit
947/2025	PNG539	<i>Malendok Island</i> Light beacon unlit
1110/2019	PNG628	<i>Oreore Channel</i> Light buoy off station
289/2024	PNG684	<i>Queen Carola Harbour</i> Light beacon unlit
746/2024	PNG545 554 680	<i>Rabaul</i> Coastline
290/2024	PNG379 647	<i>Redscar Head</i> Light unlit
985/2021	Aus840 841	<i>Saibai Island</i> Shoaling
285/2023	PNG514	<i>Tamiaris Reef</i> Light unlit
831/2022	PNG543 666	<i>Wadei Island</i> Light beacon unlit
912/2025	Aus4060 4604 PNG518 519	<i>Ward Hunt Strait</i> Light unlit
938/2024	SLB102	SOLOMON ISLANDS <i>Blackett Strait</i> Shoaling
768/2024	SLB102 302	<i>Diamond Narrows to Munda Bar</i> Shoaling

315(T)/2026 AUSTRALIA - TEMPORARY AND PRELIMINARY NOTICES

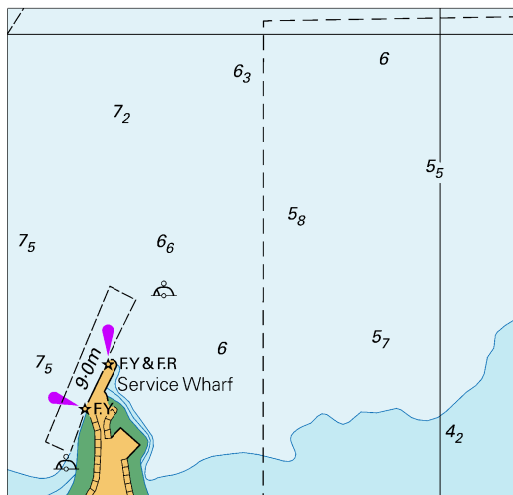
<i>Notice</i>	<i>Charts affected</i>	<i>Locality and Subject</i>
133/2026	SLB201 304	<i>Florida Islands</i> Light beacon unlit
91/2018	SLB102 301 302	<i>Ghizo Island</i> Shoaling
266/2026	Aus4604 SLB101 201 303 304	<i>Guadalcanal Island</i> Geotechnical and geophysical operations northwards
940/2024 892/2025	SLB101 SLB101	<i>Honiara</i> Light buoy unlit Light buoy removed
506/2024	SLB201 304	<i>Lengo Channel</i> Light beacon unlit
678/2017	SLB101 201	<i>Lungga Point</i> Light beacon unlit
387/2024	SLB101	<i>Maru Sound</i> Light buoys off station
83/2026	SLB102 301 302	<i>Nusatupe Island</i> Light beacon relit; topmark destroyed
406/2020	SLB102	<i>Port Noro to Kuri Point</i> Shoaling
SOUTHERN OCEAN		
80/2022	Aus600	<i>Antarctica</i> Shoaling
123/2026	Aus605	<i>Heard Island</i> Shoaling
228/2024 631/2025	Aus4074 Aus4060 4074 4601 4708 4709 4710	<i>Macquarie Island</i> Scientific instrument southwestwards Shoaling
TIMOR-LESTE		
987/2018	Aus901	<i>Dili</i> Light unlit

II

HYDROGRAPHIC REPORTS

NIL

To accompany Australian Notice to Mariners 274/2026

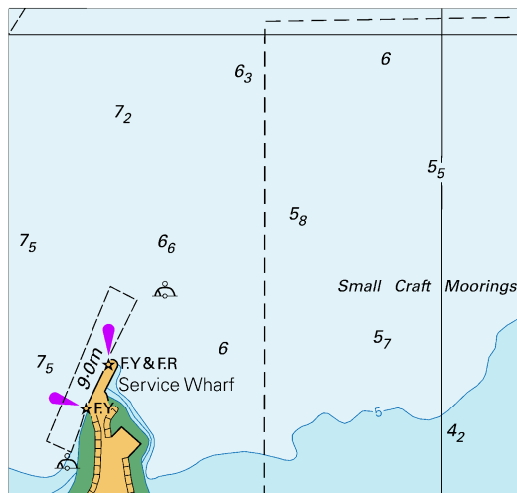


Block for chart Aus 59

(67.7 x 64.3mm)

© Commonwealth of Australia 2026

To accompany Australian Notice to Mariners 274/2026



Block for chart Aus 60 (67.7 x 64.3mm)
© Commonwealth of Australia 2026

