



AUSTRALIAN NOTICES TO MARINERS

Notices 227 - 266

Published fortnightly by the Australian Hydrographic Office

Australian Notices to Mariners are the authority for correcting charts and publications published by the Australian Hydrographic Office covering Australia, Papua New Guinea, Solomon Islands, Australian Antarctic Territory and Timor-Leste.

Commodore D.G. MULLINS, RAN
Hydrographer of Australia

SECTIONS.

- I. **Australian Notices to Mariners, including blocks and notes.**
- II. **Hydrographic Reports.**

SUPPLEMENTS.

- I. **Tracings**
 - II. **Cumulative List of Australian Notices to Mariners.**
 - III. **Cumulative List of Temporary and Preliminary Australian Notices to Mariners.**
 - IV. **Temporary and Preliminary Notices in force.**
-
-

© Commonwealth of Australia 2026

This work is copyright. Apart from any use permitted under the Copyright Act 1968, no part may be reproduced by any process, adapted, communicated or commercially exploited without prior written permission from The Commonwealth represented by the Australian Hydrographic Office.

IMPORTANT NOTICE

This edition of Notices to Mariners includes all navigationally significant information affecting AHO products which the AHO has become aware of since the last edition. All reasonable efforts have been made to ensure the accuracy and completeness of the information, including third party information, on which these updates are based. The AHO regards third parties from which it receives information as reliable, however the AHO cannot verify all such information and errors may therefore exist. The AHO does not accept liability for errors in third party information.

GENERAL INSTRUCTIONS

The substance of these notices should be inserted on the charts affected.

Bearings are referred to the true compass and are reckoned clockwise from North; those relating to lights are given as seen by an observer from seaward.

Positions quoted in notices relate to WGS84 which is the horizontal datum for all charts produced by the Australian Hydrographic Office.

The range quoted for a light is its nominal range.

Depths are with reference to the chart datum of each chart. Heights are above mean high water springs or mean higher high water, as appropriate.

The capital letter (P) or (T) after the number of any notice denotes a preliminary or temporary notice respectively, which are contained separately at the end of the permanent notices.

REPORTING OF DANGERS

Mariners are particularly requested to notify the AUSTRALIAN HYDROGRAPHIC OFFICE, Locked Bag 8801 Wollongong, NSW 2500 (e-mail datacentre@hydro.gov.au or, alternatively by filling in and submitting the [Hydrographic Notes](#) forms located on the web site – www.hydro.gov.au), immediately on the discovery of new dangers or suspected dangers to navigation. For changes or defects in aids to navigation notify AusSAR (Fax 02-6230 6868 or email rccaus@amsa.gov.au).

AUTHORISED USE

Copies of Australian notices are available free of charge from the Australian Hydrographic Office (AHO) website (www.hydro.gov.au) and through the eNotices (email) service (www.hydro.gov.au/enotices/enotices.htm).

Individual Notices may be copied for the purpose of inserting Notice substance on official charts and publications. Paper copies may be printed by chart agents and distributed to customers on a cost recovery basis. Participating chart agents are listed on the AHO website as providing a 'Paper Notices to Mariners' service (www.hydro.gov.au/prodserv/agents-list.htm). Copies of the notices may not be sold for profit without prior written agreement.

NUMERICAL INDEX OF NOTICES TO MARINERS

Edition No 6

Notices	Aus Chart, INT Chart, ENC Cell, AHP, BA Pubs
227	Aus 119, 250, 746, 808
228	Aus 255
229	Aus 249, 823
230	Aus 6, 303
231	Aus 14
232	Aus 710
233	Aus 4603, INT 603
234	Aus 50
235	Aus 73
236	Aus 116, 335, 336
237	Aus 112, 754
238	Aus 327
239	Aus 84
240	Aus 151
241	Aus 796, 797
242	SLB 201, 304
243(T)	Aus 808
244(T)	Aus 809
245(T)	Aus 489, 4060, 4601, 4602, INT 60, 601, 602
246(T)	Aus 198, 489, 808, 4060, 4601, 4602, INT 60, 601, 602
247(T)	Aus 237
248(T)	Aus 245, 246, 265, 815, 816, 817, 818, 819, 820
249(T)	Aus 828
250(T)	Aus 236
251(T)	Aus 4622, INT 622, PNG 523
252(T)	PNG 647, 648
253(P)	Aus 299
254(T)	Aus 65, 327, 328, 742
255(T)	Aus 4708, 4709, 4710, INT 708, 709, 710
256(P)	Aus 73
257(T)	Aus 327
258(T)	Aus 4723, INT 723
259(T)	Aus 327, 742
260(T)	Aus 116
261(T)	Aus 777, 778
262(T)	Aus 778
263(T)	Aus 357
264(T)	Aus 349
265(T)	Aus 357, 487, 802
266(T)	Aus 4604, INT 604, SLB 101, 201, 303, 304

NUMERICAL INDEX OF CHARTS AFFECTED

Edition No 6

Aus Chart	Notices
Aus 6	230
Aus 14	231
Aus 50	234
Aus 65	254(T)
Aus 73	235, 256(P)
Aus 84	239
Aus 112	237
Aus 116	236, 260(T)
Aus 119	227
Aus 151	240
Aus 198	246(T)
Aus 236	250(T)
Aus 237	247(T)
Aus 245	248(T)
Aus 246	248(T)
Aus 249	229
Aus 250	227
Aus 255	228
Aus 265	248(T)
Aus 299	253(P)
Aus 303	230
Aus 327	238, 254(T), 257(T), 259(T)
Aus 328	254(T)
Aus 335	236
Aus 336	236
Aus 349	264(T)
Aus 357	263(T), 265(T)
Aus 487	265(T)
Aus 489	245(T), 246(T)
Aus 710	232
Aus 742	254(T), 259(T)
Aus 746	227
Aus 754	237
Aus 777	261(T)
Aus 778	261(T), 262(T)
Aus 796	241
Aus 797	241
Aus 802	265(T)
Aus 808	227, 243(T), 246(T)
Aus 809	244(T)
Aus 815	248(T)
Aus 816	248(T)
Aus 817	248(T)
Aus 818	248(T)
Aus 819	248(T)
Aus 820	248(T)
Aus 823	229
Aus 828	249(T)
Aus 4060	245(T), 246(T)
Aus 4601	245(T), 246(T)
Aus 4602	245(T), 246(T)
Aus 4603	233
Aus 4604	266(T)
Aus 4622	251(T)

Aus Chart	Notices
Aus 4708	255(T)
Aus 4709	255(T)
Aus 4710	255(T)
Aus 4723	258(T)
PNG 523	251(T)
PNG 647	252(T)
PNG 648	252(T)
SLB 101	266(T)
SLB 201	242, 266(T)
SLB 303	266(T)
SLB 304	242, 266(T)

INT Chart	Notices
INT 60	245(T), 246(T)
INT 601	245(T), 246(T)
INT 602	245(T), 246(T)
INT 603	233
INT 604	266(T)
INT 622	251(T)
INT 708	255(T)
INT 709	255(T)
INT 710	255(T)
INT 723	258(T)

227 AUSTRALIA - Products - New Charts, New Editions, Withdrawn Charts

Australian Hydrographic Office , UKHO

New Charts

<i>Chart</i>	<i>Title and Geographical limits</i>	<i>Scale</i>	<i>Publication Date</i>	<i>Remarks</i>
NIL				

New Electronic Navigation Chart (Aus ENC)

<i>Cell Name</i>	<i>Title</i>	<i>Publication Date</i>	<i>Remarks</i>
NIL			

New Editions and Withdrawn Charts

<i>Chart</i>	<i>Title</i>	<i>Scale</i>	<i>Publication Date</i>	<i>Remarks</i>
Aus 119 (Edition 6)	Australia - South Coast - Western Approaches to Esperance Plans: Bandy Creek Boat Harbour Esperance Duke of Orleans Bay Approaches to Goose Island Bay	1:75 000 1:7 500 1:10 000 1:50 000 1:50 000	20/3/2026	New edition with general updating throughout; including latest bathymetric data. Chart Aus 119 Edition 5 dated 24 May 2024 is now superseded and must be withdrawn from use.
Aus 250 (Edition 9)	Australia - East Coast - Queensland - Plans of Hay Point and Mackay Harbour Plans: Mackay Harbour Hay Point	 1:10 000 1:15 000	20/3/2026	New edition with general updating throughout; including latest bathymetric data. Chart Aus 250 Edition 8 dated 10 November 2023 is now superseded and must be withdrawn from use.
Aus 746 (Edition 2)	Australia - West Coast - Western Australia - Point Maud to Point Quobba	1:150 000	20/3/2026	New edition with general updating throughout; including latest bathymetric data. Chart Aus 746 Edition 1 dated 29 January 2010 is now superseded and must be withdrawn from use.
Aus 808 (Edition 2)	Australia - East Coast - New South Wales - Jervis Bay to Port Jackson	1:150 000	20/3/2026	New edition with general updating throughout; including latest bathymetric data. Chart Aus 808 Edition 1 dated 19 January 2001 is now superseded and must be withdrawn from use.

Admiralty publication

<i>NP No</i>	<i>Title</i>	<i>Date</i>	<i>Remarks</i>
NP282(2)	ADMIRALTY List of Radio Signals Radio Aids to Navigation, Differential GPS (DGPS), Legal Time, Radio Time Signals and Electronic Position Fixing System The Americas, Far East and Oceania Volume 2 Part 2 7th Edition (2026)	19/3/2026	The 6th Edition 2026 of NP282(2) is cancelled.

227 AUSTRALIA - Products - New Charts, New Editions, Withdrawn Charts

Chart permanently withdrawn

Charts listed above as withdrawn no longer meet chart carriage requirements and should be marked as "superseded" and replaced with the new chart/ new edition listed prior to passage through the area covered by the new chart.

When placing orders with a chart agent between notice of forthcoming edition and its publication, mariners should advise whether their order pertains to the current edition or the new edition.

For further details refer to the AHO website at www.hydro.gov.au for new edition and new chart stock arrival information.

228 AUSTRALIA - Products - New Charts and New Editions to be published shortly

Australian Hydrographic Office

New Charts to be published shortly

Chart	Title	Scale	Remarks
NIL			

New Editions to be published shortly

Chart	Title	Scale	Remarks
Aus 255	Australia - East Coast - Queensland - Approaches to Abbot Point	1:25 000	New edition with general updating throughout; including latest bathymetric data.

229 AUSTRALIA - QUEENSLAND - Hay Point - Dredged area, depths, infrastructure

Maritime Safety Queensland

Aus 249 [137/2026]

Insert	accompanying block	21° 15'.5 S	149° 20'.0 E
--------	------------------------------------	-------------	--------------

Aus 823 [180/2024]

Insert	continuous line, between	21° 16'.32 S	149° 17'.61 E
		21° 15'.71 S	149° 18'.75 E
Delete	continuous line, between	21° 16'.4 S	149° 17'.8 E
		21° 15'.9 S	149° 18'.8 E

230 AUSTRALIA - QUEENSLAND - Karumba - Pilotage

Maritime Safety Queensland

Aus 6 [1064/2025]

Insert	magenta dashed line with legend, <i>Karumba Compulsory Pilotage Limit</i> , between	17° 24'.000 S	140° 47'.700 E
		17° 24'.000 S	140° 43'.000 E
		17° 30'.247 S	140° 43'.000 E

Aus 303 [815/2025]

Insert	magenta dashed line with legend, <i>Karumba Compulsory Pilotage Limit</i> , between	17° 30'.75 S	140° 43'.00 E
		17° 24'.00 S	140° 43'.00 E
		17° 24'.00 S	140° 52'.00 E
		17° 24'.06 S	140° 52'.09 E

231 AUSTRALIA - NORTHERN TERRITORY - Groote Eylandt - Milner Bay - Mooring area
Northern Territory Government

Aus 14 [91/2026]

Insert	dashed line with legend, <i>Moorings</i> , between	13° 51'.34 S	136° 25'.07 E
		13° 51'.43 S	136° 24'.81 E
		13° 51'.06 S	136° 24'.46 E
		13° 50'.96 S	136° 24'.78 E
		13° 51'.34 S	136° 25'.07 E

Aus 14 (Milner Bay) [91/2026]

Insert	dashed line, between	13° 51'.033 S	136° 24'.835 E
		13° 51'.322 S	136° 25'.061 E
	dashed line, between	13° 51'.033 S	136° 24'.532 E
		13° 51'.053 S	136° 24'.467 E
	dashed line, between	13° 51'.068 S	136° 24'.467 E
		13° 51'.425 S	136° 24'.805 E
		13° 51'.336 S	136° 25'.072 E
	legend, <i>Moorings</i>	13° 51'.207 S	136° 24'.787 E

232 AUSTRALIA - NORTHERN TERRITORY - Groote Eylandt - Cumberlege Reef - Rock
Australian Hydrographic Office

Aus 710 [1067/2025]

Move	rock which covers and uncovers enclosed by danger circle with legend, <i>Cumberlege Reef (2)</i> to	14° 28'.0 S	136° 53'.6 E
		14° 27'.90 S	136° 53'.47 E

233 INDONESIA - Irian Jaya - Amamapare - Wreck
UKHO

Aus 4603 (INT 603) [196/2026]

Insert	dangerous wreck with legend, <i>Rep (2026)</i> , centred on	4° 58'.0 S	136° 37'.2 E
--------	---	------------	--------------

234 AUSTRALIA - WESTERN AUSTRALIA - Broome - Entrance Point - Depths
Department of Transport and Major Infrastructure WA

Aus 50 [NE 12/12/2025]

Insert	accompanying block	18° 00'.0 S	122° 12'.0 E
--------	------------------------------------	-------------	--------------

235 AUSTRALIA - WESTERN AUSTRALIA - Carnarvon - Depths
Department of Transport and Major Infrastructure WA

Aus 73 (Carnarvon) [NE 12/12/2025]

Insert	depth, 0 ₇ m	24° 53'.985 S	113° 38'.197 E
Delete	depth, 1 ₆ m	24° 53'.96 S	113° 38'.18 E

236 AUSTRALIA - WESTERN AUSTRALIA - Flinders Bay - Depths

Department of Transport and Major Infrastructure WA

Aus 116 (Flinders Bay) [980/2025]

Insert	accompanying block A	34° 20'.0 S	115° 13'.0 E
	accompanying block B	34° 24'.0 S	115° 12'.0 E

Aus 335 [13/2026]

Insert	depth, 13m, enclosed by contour	34° 21'.82 S	115° 25'.98 E
--------	---------------------------------	--------------	---------------

Replace	depth, 2 ₂ m, with depth, 0 ₃ m, enclosed by contour	34° 23'.2 S	115° 10'.5 E
	depth, 24 ₇ m, with depth, 24 ₃ m	34° 23'.4 S	115° 14'.2 E
	depth, 29 ₆ m, with depth, 23 ₆ m	34° 25'.4 S	115° 27'.7 E

Aus 336 [1070/2025]

Insert	depth, 13m, enclosed by contour	34° 21'.82 S	115° 25'.98 E
--------	---------------------------------	--------------	---------------

Replace	depth, 2 ₂ m, with depth, 0 ₃ m, enclosed by contour	34° 23'.2 S	115° 10'.5 E
	depth, 24 ₇ m, with depth, 24 ₃ m	34° 23'.4 S	115° 14'.2 E
	depth, 29 ₆ m, with depth, 23 ₆ m	34° 25'.4 S	115° 27'.7 E

237 AUSTRALIA - WESTERN AUSTRALIA - Fremantle - Obstruction

Australian Hydrographic Office

Aus 112 [190/2026]

Replace	depth, 0 ₇ m, and enclosing contour with depth, 0 ₇ m, enclosed by danger circle with legend, <i>Obstn</i>	32° 00'.95 S	115° 44'.93 E
---------	--	--------------	---------------

Aus 754 [47/2026]

Replace	depth, 0 ₇ m, and enclosing contour with depth, 0 ₇ m, enclosed by danger circle with legend, <i>Obstn</i>	32° 01'.0 S	115° 44'.9 E
---------	--	-------------	--------------

238 AUSTRALIA - WESTERN AUSTRALIA - Glomar Shoal - Depths

Australian Hydrographic Office

Aus 327 [194/2026]

Insert	accompanying block	19° 35'.0 S	116° 36'.0 E
--------	------------------------------------	-------------	--------------

239 AUSTRALIA - WESTERN AUSTRALIA - Jurien Bay - Depths

Department of Transport and Major Infrastructure WA

Aus 84 (Jurien Bay) [193/2026]

Insert	accompanying block	30° 17'.5 S	115° 02'.3 E
--------	------------------------------------	-------------	--------------

Aus 84 (Port Denison) [193/2026]

Insert	accompanying ZOC diagram	29° 16'.6 S	114° 55'.7 E
--------	--	-------------	--------------

240 AUSTRALIA - VICTORIA - Western Port - Gentle Annie Channel - Depths; nav aids

Former Notice - 581(T)/2025 is cancelled

Parks Victoria Notice 644/2025

Aus 151 (Continuation of Western Port) [200/2026]

Insert	accompanying block B	38° 13'.5 S	145° 22'.9 E
	accompanying block A	38° 14'.8 S	145° 19'.5 E

241 AUSTRALIA - TASMANIA - Forestier Peninsula - Cape Surville - Fish aggregating device

Former Notice - 225(T)/2026 is cancelled
 Marine and Safety Tasmania Notice M91(T)/2026

Aus 796 [405/2025]

Move	light buoy	42° 57'.5 S	148° 01'.5 E
	to	42° 59'.46 S	148° 01'.32 E

Aus 797 [1027/2025]

Move	light buoy	42° 57'.5 S	148° 01'.5 E
	to	42° 59'.46 S	148° 01'.32 E

242 SOLOMON ISLANDS - Florida Islands - Tulaghi Harbour - Depths

Solomon Islands Maritime Authority

SLB 201 [784/2025]

Insert	accompanying block	9° 07'.5 S	160° 09'.5 E
--------	------------------------------------	------------	--------------

SLB 304 [364/2025]

Insert	accompanying block	9° 08'.5 S	160° 07'.6 E
--------	------------------------------------	------------	--------------

243(T)/2026 AUSTRALIA - NEW SOUTH WALES - Cape Banks - Fish aggregating device off station eastwards
NSW Department of Primary Industries and Regional Development

The special light buoy, *Fl. Y. 5s (Oct-May)* (33° 59'.32 S 151° 20'.95 E) is off station and in position 34° 00'.28 S 151° 20'.36 E.

Chart temporarily affected - Aus 808

244(T)/2026 AUSTRALIA - NEW SOUTH WALES - Newcastle - Belmont - Construction works
Transport for NSW

Construction works from a jack up barge are underway in the vicinity of position 33° 03'.12 S 151° 40'.58 E.
An exclusion zone marked by yellow flashing buoys and 24 hour surveillance, exists for all vessels not involved in the works.

Mariners should navigate with caution.

Chart temporarily affected - Aus 809

245(T)/2026 AUSTRALIA - NEW SOUTH WALES - QUEENSLAND - Sydney to Brisbane - Cable laying operations eastwards

Gulf Agency Company (Australia)

Cable laying operations will be conducted between Sydney and Brisbane. Cable lay and post lay inspection activities will occur along the route shown in the diagram and mariners are advised to keep clear of the vessel, *Dependable*, during activities. Further advice on specific areas of activity will be issued through the AUSCOAST warning system.

Note: For e-notice users, please see full edition for map.

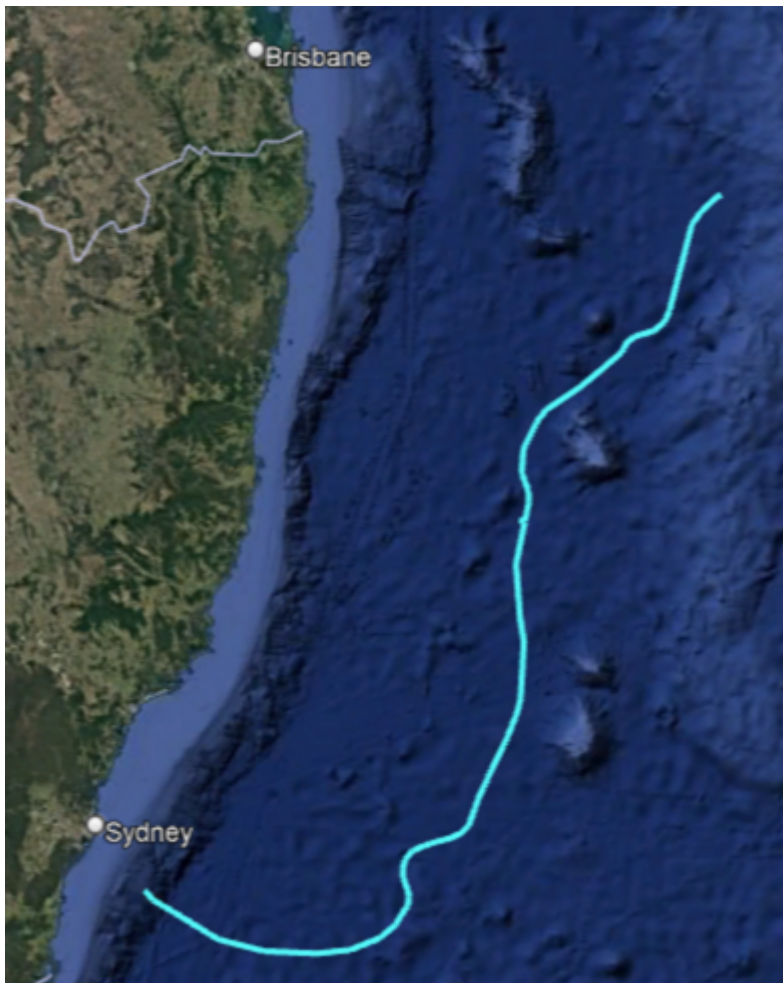


Chart temporarily affected - Aus 489 - Aus 4060 (INT 60) - Aus 4601 (INT 601) - Aus 4602 (INT 602)

246(T)/2026 AUSTRALIA - NEW SOUTH WALES - Sydney to Eden - Cable laying operations eastwards
Gulf Agency Company (Australia)

Cable laying operations will be conducted between Sydney and Eden. Cable lay and post lay inspection activities will occur along the route shown in the diagram and mariners are advised to keep clear of the vessel, *Responder*, during activities. Further advice on specific areas of activity will be issued through the AUSCOAST warning system.

Note: For e-notice users, please see full edition for map.

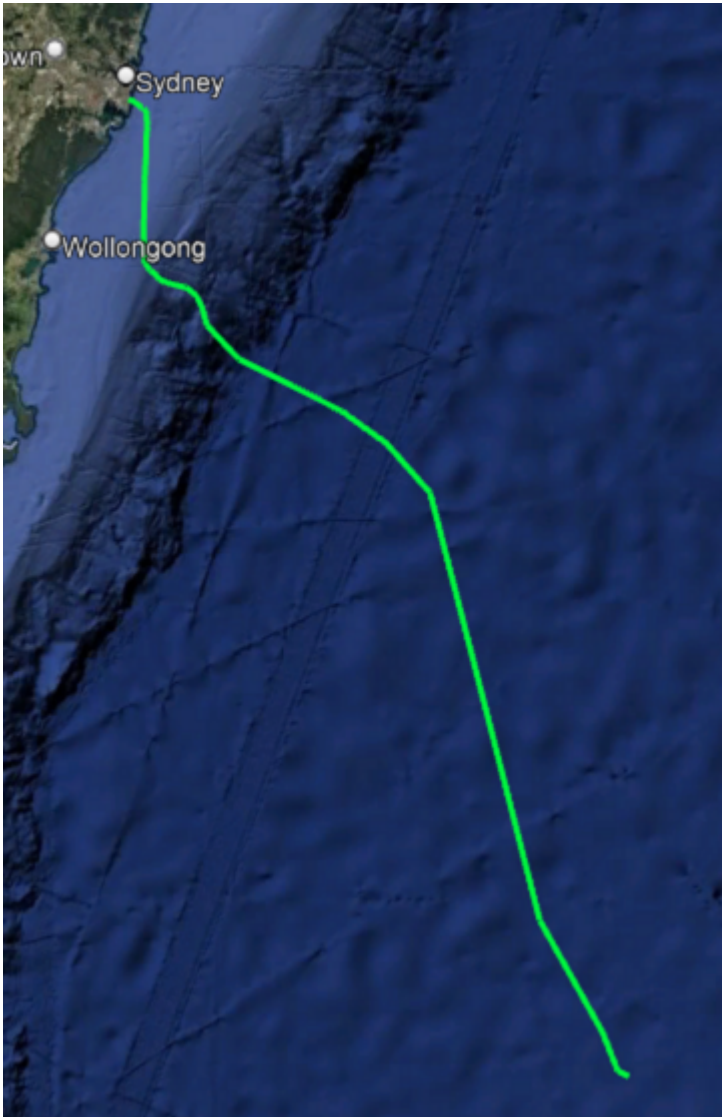


Chart temporarily affected - Aus 198 - Aus 489 - Aus 808 - Aus 4060 (INT 60) - Aus 4601 (INT 601) - Aus 4602 (INT 602)

247(T)/2026 AUSTRALIA - QUEENSLAND - Brisbane River - Construction works

Maritime Safety Queensland Notice 099(T)/2026

Construction works have commenced at the Port North Common User Berth on the Brisbane River. The works are being carried out from the heavy lift barge *Maeve Anne* and its support craft, in the vicinity of position 27° 23'.027 S, 153° 09'.280 E.

Flashing lights will be displayed at the four corners of the barge and it will be secured using four anchors, each marked with buoys fitted with flashing yellow lights. The works are scheduled to occur between 0600 and 1800 hours, Monday to Saturday.

During working hours, the barge and support craft will monitor VHF Ch 13 and Ch 16. Mariners are advised to navigate with caution when transiting the area and to pass at a slow speed when requested.

Chart temporarily affected - Aus 237**248(T)/2026 AUSTRALIA - QUEENSLAND - Double Island Point to Yeppoon - Obstructions; nav aids off station**

Maritime Safety Queensland Notice 122(T)/2026

Due to recent flooding, a large amount of floating debris has been flushed out of river systems. Debris may be floating on top or below the surface and poses a hazard to navigation in coastal waters between Double Island Point (25° 55'.92 S 153° 11.44 E) and Yeppoon (23° 07'.71 S 150° 44.99 E). Nav aids in and around river systems may be off station.

Mariners are advised to navigate with caution in the area.

Chart temporarily affected - Aus 245 - Aus 246 - Aus 265 - Aus 815 - Aus 816 - Aus 817 - Aus 818 - Aus 819 - Aus 820**249(T)/2026 AUSTRALIA - QUEENSLAND - Hinchinbrook Island - Missionary Bay - Light buoy restored***Former Notice - 443(T)/2025 is cancelled*

Maritime Safety Queensland

Cancel this notice on receipt.

Chart formerly affected - Aus 828**250(T)/2026 AUSTRALIA - QUEENSLAND - Moreton Bay - Amity Point - Scientific instrument recovered***Former Notice - 332(T)/2025 is cancelled*

Maritime Safety Queensland Notice 127(T)/2025

Cancel this notice on receipt.

Chart formerly affected - Aus 236**251(T)/2026 PAPUA NEW GUINEA - Cape Gerhards - Light unlit**

National Maritime Safety Authority PNG Coastal Navigation Warning 2/2026

The light, *Fl(3)12s 22m 10M* (6° 44'.70 S 147° 34'.56 E), is unlit.

Chart temporarily affected - Aus 4622 (INT 622) - PNG 523**252(T)/2026 PAPUA NEW GUINEA - Caution Bay - Light buoy off station**

National Maritime Safety Authority PNG Coastal Navigation Warning 1/2026

The east cardinal light buoy, *Q(3)10s TB1* (9° 20'.44 S 146° 58'.59 E), is off station.

Chart temporarily affected - PNG 647 - PNG 648

253(P)/2026 AUSTRALIA - TORRES STRAIT - Horn Island to Thursday Island - Shoaling
Maritime Safety Queensland

Latest survey indicates shoaler depths than those charted may exist in the vicinity of positions 10° 35'.46 S 142° 14'.75 E and 10° 35'.18 S 142° 13'.37 E.

Mariners are advised to navigate with caution in the area.

Charts will be updated in due course.

Chart which will be affected - Aus 299

254(T)/2026 AUSTRALIA - WESTERN AUSTRALIA - Barrow Island - Double Island - Platform unlit
Santos

The *Double Island* platform, *Mo(U)Y.15s* (20° 45'.35 S 115° 30'.33 E), is unlit.

Chart temporarily affected - Aus 65 - Aus 327 - Aus 328 - Aus 742

255(T)/2026 AUSTRALIA - WESTERN AUSTRALIA - Cape Naturaliste - Cable laying operations westwards
Gulf Agency Company (Australia)

Vessel *CS Resolute* is conducting cable laying operations between positions 33° 14'.89 S 113° 42'.24 E and 34° 19'.54 S 109° 35'.95 E.

Mariners are advised to navigate with caution in the area.

Chart temporarily affected - Aus 4708 (INT 708) - Aus 4709 (INT 709) - Aus 4710 (INT 710)

256(P)/2026 AUSTRALIA - WESTERN AUSTRALIA - Carnarvon - Shoaling
Department of Transport and Major Infrastructure WA

Latest survey indicates potential channel realignment and shoaler depths than those charted may exist in the vicinity of position 24° 54'.44 S 113° 38'.67 E.

Mariners are advised to navigate with caution in the area.

Charts will be updated in due course.

Chart which will be affected - Aus 73

257(T)/2026 AUSTRALIA - WESTERN AUSTRALIA - Dampier Archipelago - Survey operations northwards
Woodside Energy Ltd

On or about 27 March 2026, vessel *Offshore Surveyor* will begin geophysical survey operations in the vicinity of the following positions:

19° 48'.0 S 115° 48'.0 E

19° 30'.0 S 116° 06'.0 E

19° 30'.0 S 116° 30'.0 E.

Mariners are advised to navigate with caution in the area. 500m clearance requested.

Chart temporarily affected - Aus 327

258(T)/2026 AUSTRALIA - WESTERN AUSTRALIA - Exmouth Plateau - Subsea operations completed

Former Notice - 159(T)/2026 is cancelled

Australian Maritime Safety Authority

Cancel this notice on receipt.

Chart formerly affected - Aus 4723 (INT 723)

259(T)/2026 AUSTRALIA - WESTERN AUSTRALIA - Lowendal Islands - Varanus Island - Subsea operations completed

Former Notice - 28(T)/2026 is cancelled
McDermott Australia , Australian Maritime Safety Authority

Cancel this notice on receipt.

Chart formerly affected - Aus 327 - Aus 742

260(T)/2026 AUSTRALIA - WESTERN AUSTRALIA - Port Geographe Marina - Dredging operations completed

Former Notice - 764(T)/2025 is cancelled
Department of Transport WA Notice 6535/2025

Cancel this notice on receipt.

Chart formerly affected - Aus 116

261(T)/2026 AUSTRALIA - SOUTH AUSTRALIA - Shoalwater Point to Point Riley - Survey operations

Lesryk Environmental

Vessel *Manta*, with a towed array, and an ROV are conducting survey operations and diving operations between positions 33° 39'.51 S 137° 12'.97 E and 33° 52'.27 S 137° 36'.53 E.

The vessel will display appropriate lights and shapes and monitor VHF Ch 12 and Ch 16.

Mariners are advised to navigate with caution in the area. 50m clearance requested.

Chart temporarily affected - Aus 777 - Aus 778

262(T)/2026 AUSTRALIA - SOUTH AUSTRALIA - Spencer Gulf - Yarraville Shoals - Geotechnical operations westwards

Department for Infrastructure and Transport SA Notice 19(T)/2026

Geotechnical operations are in progress in the vicinity of position 33° 14'.50 S 137° 27'.78 E.

Mariners are advised to navigate with caution in the area.

Chart temporarily affected - Aus 778

263(T)/2026 AUSTRALIA - VICTORIA - Golden Beach - Survey operations

GB Energy, Safe Transport Victoria Notice 137(T)/2026

On or about 23 March 2026, vessels *Bass Trek* and *Survey 1*, with a towed array, will begin geophysical survey operations in an area bounded by the coast and the following positions:

38° 15'.05 S 147° 21'.16 E
38° 16'.02 S 147° 25'.33 E
38° 14'.99 S 147° 26'.67 E
38° 14'.14 S 147° 26'.67 E
38° 13'.51 S 147° 23'.13 E.

Vessels will display appropriate lights and shapes and will monitor VHF Ch 16.

Mariners are advised to navigate with caution in the area. 500m clearance requested.

Chart temporarily affected - Aus 357

264(T)/2026 AUSTRALIA - VICTORIA - Port Campbell - Subsea operations complete

Former Notice - 172(T)/2026 is cancelled
Amplitude Energy , Australian Maritime Safety Authority

Cancel this notice on receipt.

Chart formerly affected - Aus 349

265(T)/2026 AUSTRALIA - BASS STRAIT - Kent Group - Survey operations complete

Former Notice - 1057(T)/2025 is cancelled

Ocean Infinity

Cancel this notice on receipt.

Chart formerly affected - Aus 357 - Aus 487 - Aus 802

266(T)/2026 SOLOMON ISLANDS - Guadalcanal Island - Geotechnical and geophysical operations northwards

Solomon Islands Maritime Authority Notice 4/2026

Vessel *Ocean Surveyor* is conducting geotechnical and geophysical survey operations between the following positions:

9° 25'.61 S 160° 00'.00 E

8° 51'.91 S 159° 54'.43 E

8° 23'.47 S 160° 28'.68 E

7° 10'.30 S 159° 53'.15 E

5° 16'.84 S 160° 23'.89 E.

The vessel will monitor VHF Ch 13 and Ch 16.

Mariners are advised to navigate with caution in the area.

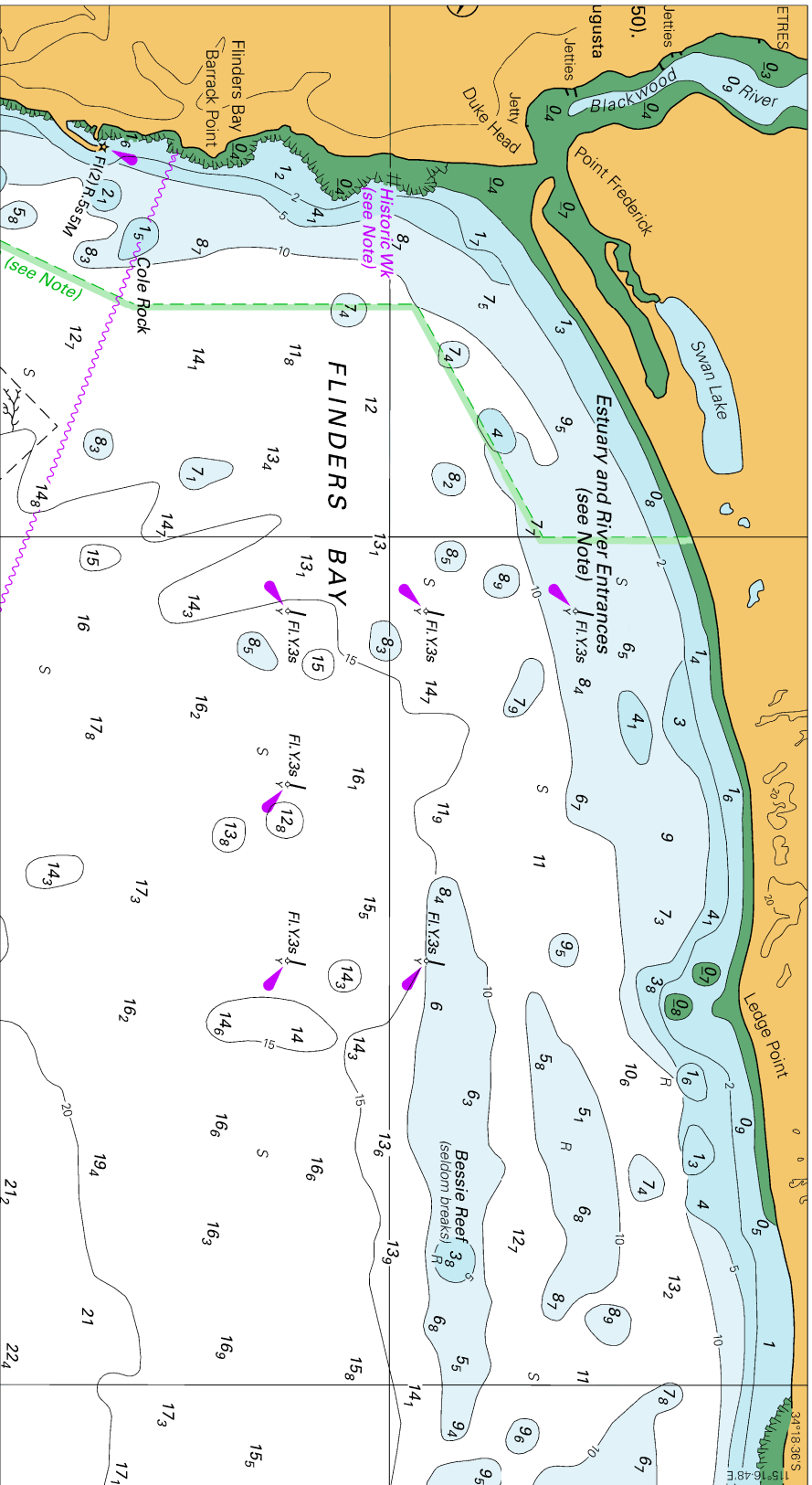
Chart temporarily affected - Aus 4604 (INT 604) - SLB 101 - SLB 201 - SLB 303 - SLB 304

II

HYDROGRAPHIC REPORTS

NIL

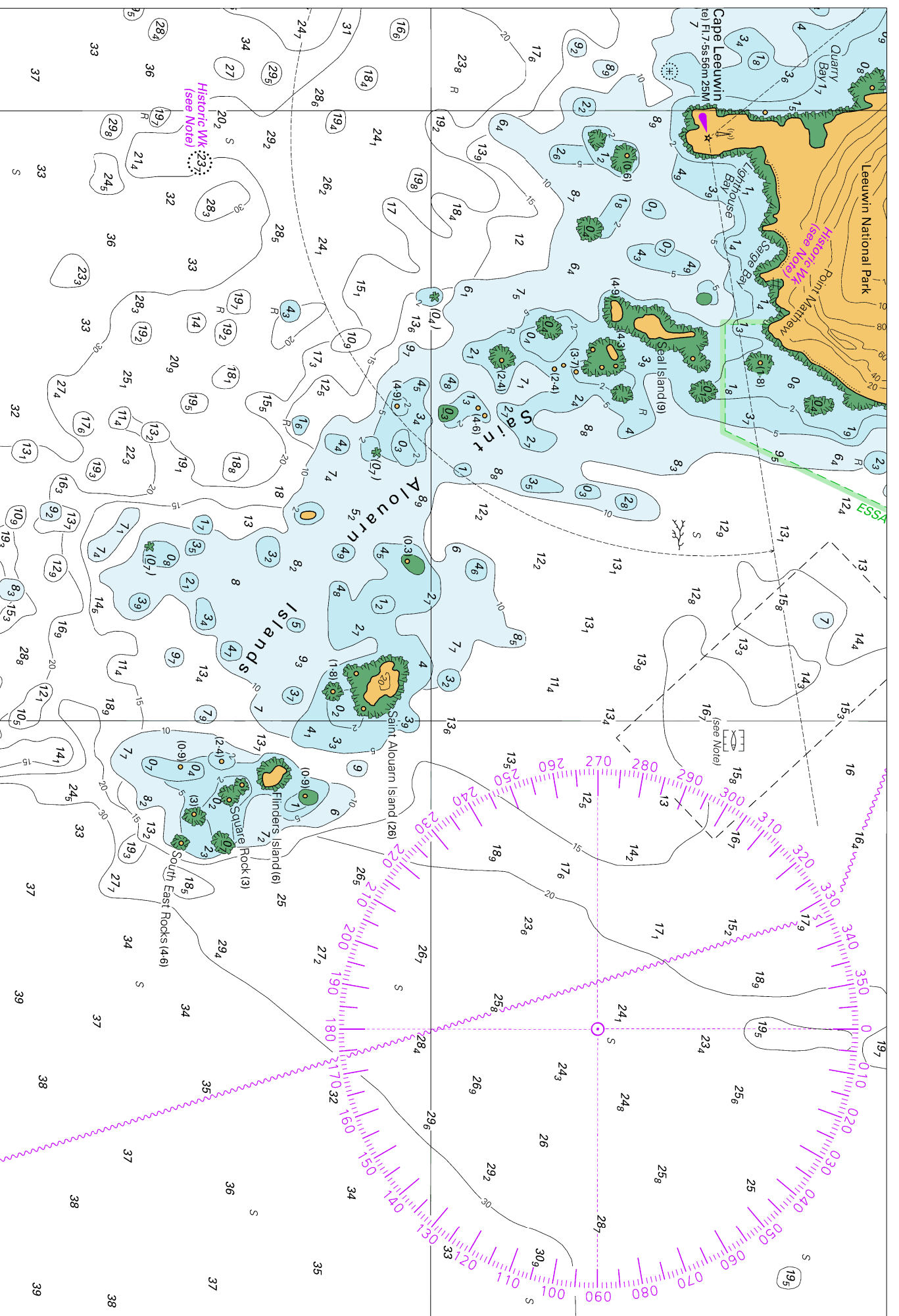
To accompany Australian Notice to Mariners 236/2026



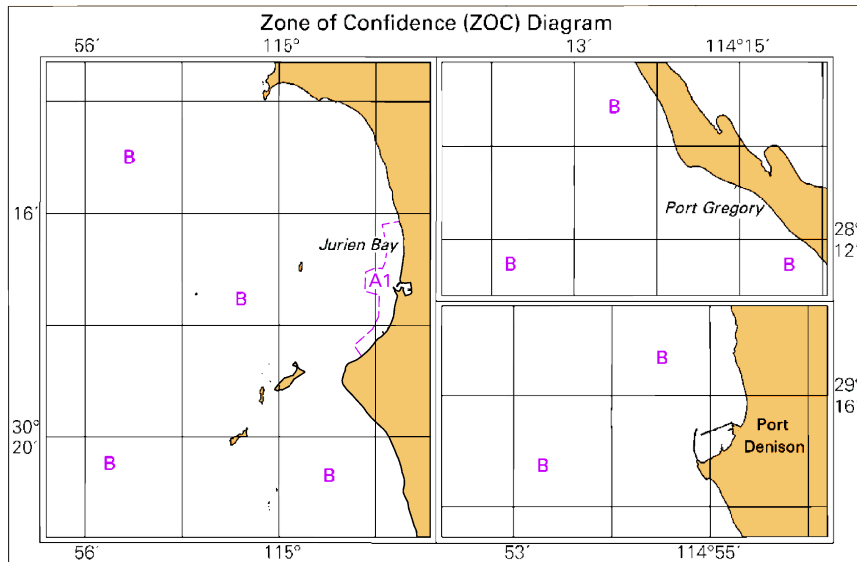
Block A for chart Aus 116

© Commonwealth of Australia 2026

(214.3 x 116.8mm)



To accompany Australian Notice to Mariners 239/2026

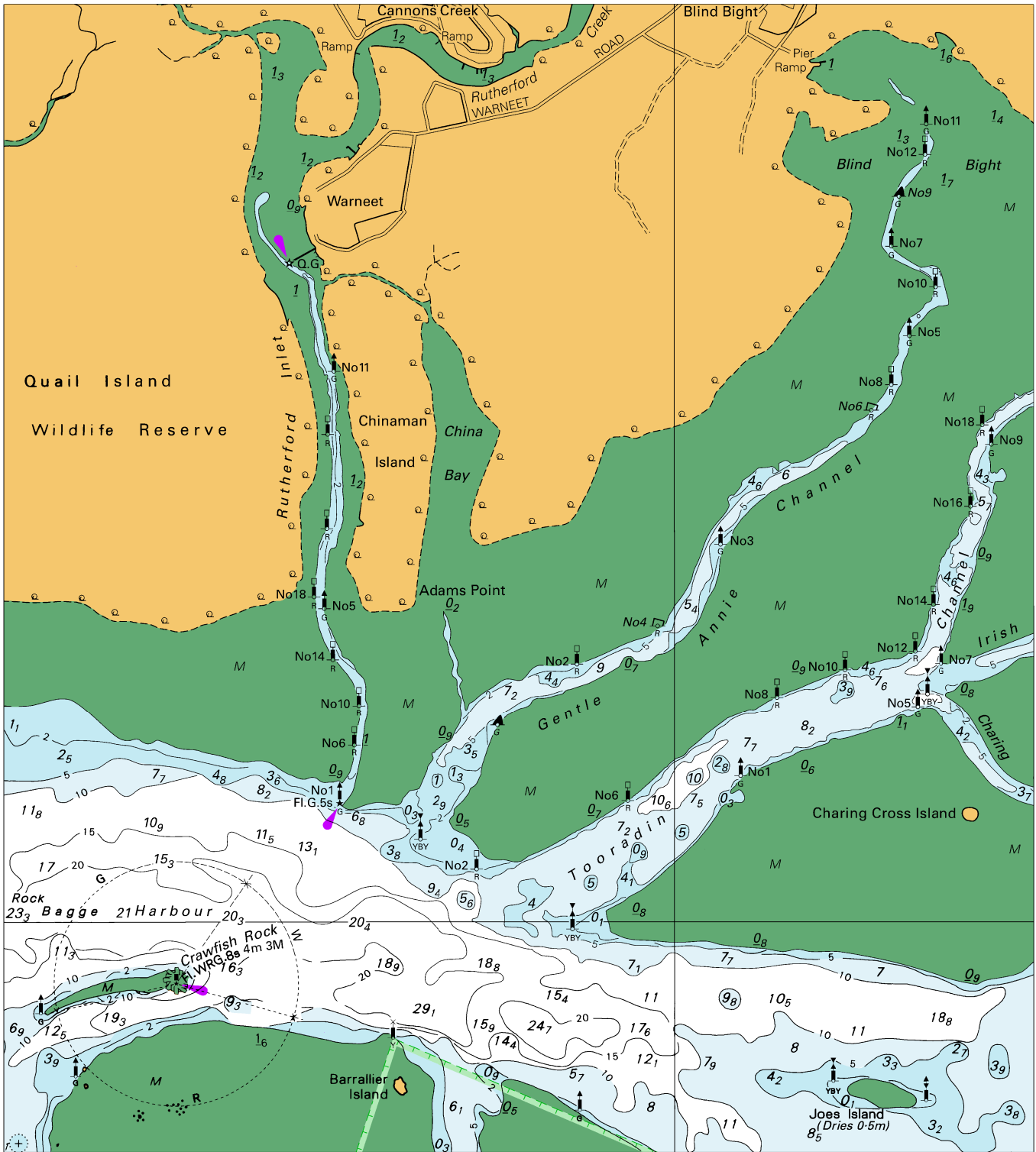


Block for chart Aus 84

© Commonwealth of Australia 2026

(113.3 x 74.0mm)

To accompany Australian Notice to Mariners 240/2026

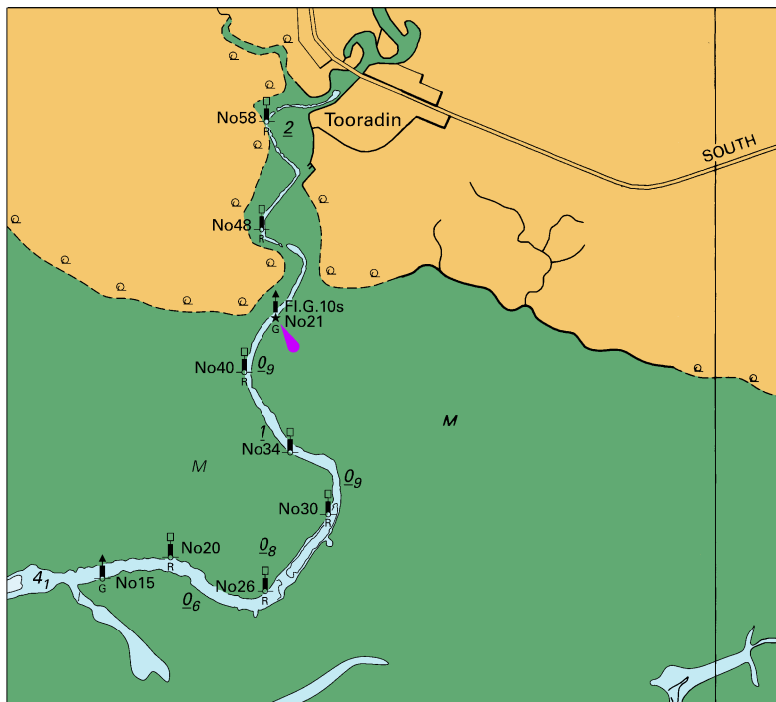


Block A for chart Aus 151

© Commonwealth of Australia 2026

(178.2 x 198.7mm)

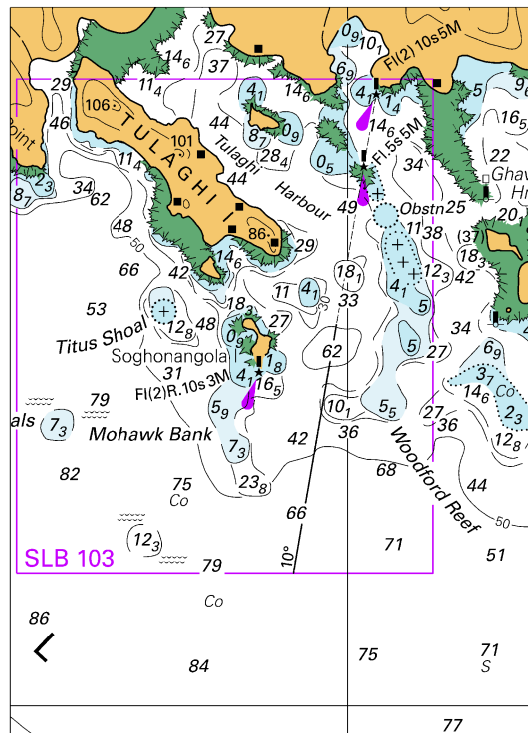
To accompany Australian Notice to Mariners 240/2026



Block B for chart Aus 151 © Commonwealth of Australia 2026

(102.6 x 92.0mm)

To accompany Australian Notice to Mariners 242/2026

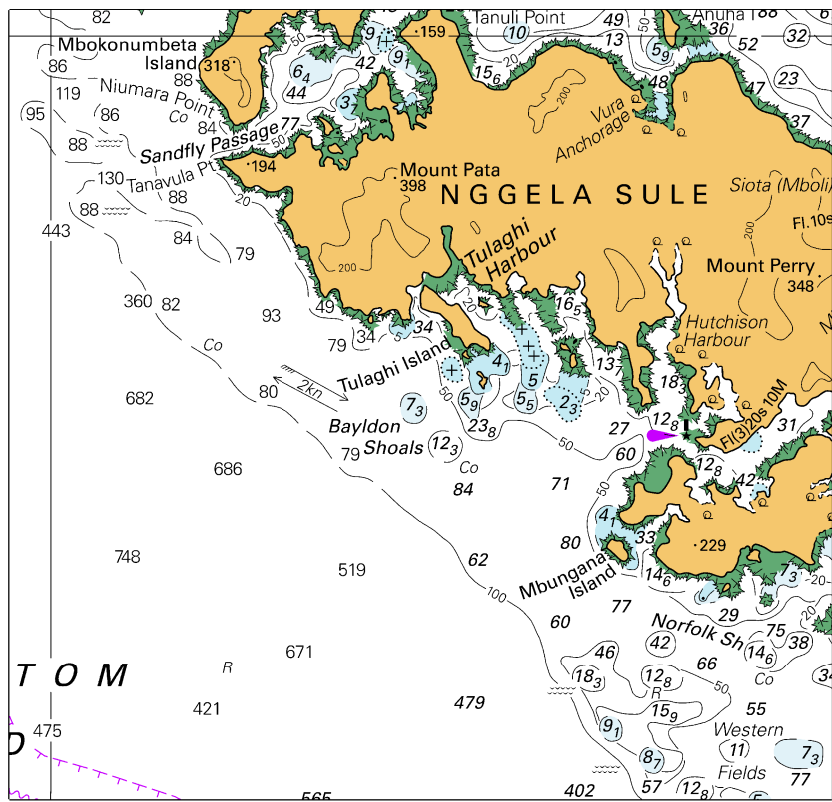


Block for chart SLB 201

(69.2 x 95.9mm)

© Commonwealth of Australia 2026

To accompany Australian Notice to Mariners 242/2026



Block for chart SLB 304 © Commonwealth of Australia 2026

(108.7 x 104.3mm)