



21 March 2025

Edition 6

# AUSTRALIAN NOTICES TO MARINERS

## Notices 239 - 276

Published fortnightly by the Australian Hydrographic Office



Australian Notices to Mariners are the authority for correcting charts and publications published by the Australian Hydrographic Office covering Australia, Papua New Guinea, Solomon Islands, Australian Antarctic Territory and Timor-Leste.

Commodore R.L. PHILLIPS RAN  
*Hydrographer of Australia*

---

### SECTIONS.

- I. **Australian Notices to Mariners, including blocks and notes.**
- II. **Hydrographic Reports.**

### SUPPLEMENTS.

- I. **Tracings**
  - II. **Cumulative List of Australian Notices to Mariners.**
  - III. **Cumulative List of Temporary and Preliminary Australian Notices to Mariners.**
  - IV. **Temporary and Preliminary Notices in force.**
- 
- 

© Commonwealth of Australia 2025

This work is copyright. Apart from any use permitted under the Copyright Act 1968, no part may be reproduced by any process, adapted, communicated or commercially exploited without prior written permission from The Commonwealth represented by the Australian Hydrographic Office.

## IMPORTANT NOTICE

This edition of Notices to Mariners includes all significant information affecting AHO products which the AHO has become aware of since the last edition. All reasonable efforts have been made to ensure the accuracy and completeness of the information, including third party information, on which these updates are based. The AHO regards third parties from which it receives information as reliable, however the AHO cannot verify all such information and errors may therefore exist. The AHO does not accept liability for errors in third party information.

---

## GENERAL INSTRUCTIONS

The substance of these notices should be inserted on the charts affected.

Bearings are referred to the true compass and are reckoned clockwise from North; those relating to lights are given as seen by an observer from seaward.

Positions quoted in notices relate to WGS84 which is the horizontal datum for all charts produced by the Australian Hydrographic Office.

The range quoted for a light is its nominal range.

Depths are with reference to the chart datum of each chart. Heights are above mean high water springs or mean higher high water, as appropriate.

The capital letter (P) or (T) after the number of any notice denotes a preliminary or temporary notice respectively, which are contained separately at the end of the permanent notices.

---

## REPORTING OF DANGERS

Mariners are particularly requested to notify the AUSTRALIAN HYDROGRAPHIC OFFICE, Locked Bag 8801 Wollongong, NSW 2500 (e-mail [datacentre@hydro.gov.au](mailto:datacentre@hydro.gov.au) or, alternatively by filling in and submitting the [Hydrographic Notes](#) forms located on the web site – [www.hydro.gov.au](http://www.hydro.gov.au)), immediately on the discovery of new dangers or suspected dangers to navigation. For changes or defects in aids to navigation notify AusSAR (Fax 02-6230 6868 or email [rccaus@amsa.gov.au](mailto:rccaus@amsa.gov.au)).

---

## AUTHORISED USE

Copies of Australian notices are available free of charge from the Australian Hydrographic Office (AHO) website ([www.hydro.gov.au](http://www.hydro.gov.au)) and through the eNotices (email) service ([www.hydro.gov.au/enotices/enotices.htm](http://www.hydro.gov.au/enotices/enotices.htm)).

Individual Notices may be copied for the purpose of inserting Notice substance on official charts and publications. Paper copies may be printed by chart agents and distributed to customers on a cost recovery basis. Participating chart agents are listed on the AHO website as providing a 'Paper Notices to Mariners' service ([www.hydro.gov.au/prodserv/agents-list.htm](http://www.hydro.gov.au/prodserv/agents-list.htm)). Copies of the notices may not be sold for profit without prior written agreement.

## NUMERICAL INDEX OF NOTICES TO MARINERS

### Edition No 6

Notices	Aus Chart, INT Chart, ENC Cell, AHP, BA Pubs
239	Aus 254, SLB 101
240	Aus 755
241	Aus 814
242	Aus 252, 253, 824, 825
243	Aus 754
244	Aus 118, 336, 337
245	Aus 336
246	Aus 53
247	Aus 743, 744
248	Aus 346, 485, 4709, INT 709
249	Aus 181, 357
250	Aus 766, 797
251	SLB 201, 303, 304
252(T)	Aus 236, 237
253(T)	Aus 242
254(T)	Aus 817
255(T)	Aus 814
256(T)	Aus 236
257(T)	Aus 236, 237
258(T)	Aus 814
259(T)	Aus 25, 309
260(T)	Aus 328
261(T)	Aus 57, 327
262(T)	Aus 57, 327, 742
263(T)	Aus 119, 762, 763, 4709, INT 709
264(T)	Aus 754, 4060, 4070, 4708, 4709, INT 60, 70, 708, 709
265(T)	Aus 118
266(T)	Aus 118
267(T)	Aus 136, 778
268(P)	Aus 181
269(T)	Aus 349
270(T)	Aus 349
271(T)	Aus 349
272(T)	Aus 155
273(T)	Aus 151
274(T)	Aus 179
275(T)	SLB 101, 201
276(T)	Aus 4060, 4604, INT 60, 604, SLB 302, 1001, 1002

## NUMERICAL INDEX OF CHARTS AFFECTED

### Edition No 6

Aus Chart	Notices	INT Chart	Notices
Aus 25	259(T)	INT 60	264(T), 276(T)
Aus 53	246	INT 70	264(T)
Aus 57	261(T), 262(T)	INT 604	276(T)
Aus 118	244, 265(T), 266(T)	INT 708	264(T)
Aus 119	263(T)	INT 709	248, 263(T), 264(T)
Aus 136	267(T)		
Aus 151	273(T)		
Aus 155	272(T)		
Aus 179	274(T)		
Aus 181	249, 268(P)		
Aus 236	252(T), 256(T), 257(T)		
Aus 237	252(T), 257(T)		
Aus 242	253(T)		
Aus 252	242		
Aus 253	242		
Aus 254	239		
Aus 309	259(T)		
Aus 327	261(T), 262(T)		
Aus 328	260(T)		
Aus 336	244, 245		
Aus 337	244		
Aus 346	248		
Aus 349	269(T), 270(T), 271(T)		
Aus 357	249		
Aus 485	248		
Aus 742	262(T)		
Aus 743	247		
Aus 744	247		
Aus 754	243, 264(T)		
Aus 755	240		
Aus 762	263(T)		
Aus 763	263(T)		
Aus 766	250		
Aus 778	267(T)		
Aus 797	250		
Aus 814	241, 255(T), 258(T)		
Aus 817	254(T)		
Aus 824	242		
Aus 825	242		
Aus 4060	264(T), 276(T)		
Aus 4070	264(T)		
Aus 4604	276(T)		
Aus 4708	264(T)		
Aus 4709	248, 263(T), 264(T)		
SLB 101	239, 275(T)		
SLB 201	251, 275(T)		
SLB 302	276(T)		
SLB 303	251		
SLB 304	251		
SLB 1001	276(T)		
SLB 1002	276(T)		

**239 AUSTRALIA - Products - New Charts, New Editions, Withdrawn Charts**

Australian Hydrographic Office

**New Charts**

<i>Chart</i>	<i>Title and Geographical limits</i>	<i>Scale</i>	<i>Publication Date</i>	<i>Remarks</i>
NIL				

**New Electronic Navigation Chart (Aus ENC)**

<i>Cell Name</i>	<i>Title</i>	<i>Scale</i>	<i>Publication Date</i>	<i>Remarks</i>
AU5PCL01	Australia - Queensland - Port Clinton		13/3/2025	AU5248P0 is withdrawn.
AU5KRB01	Australia - Queensland - Gulf of Carpentaria - Karumba and Approaches		13/3/2025	AU5006P0 is withdrawn.

**New Editions and Withdrawn Charts**

<i>Chart</i>	<i>Title</i>	<i>Scale</i>	<i>Publication Date</i>	<i>Remarks</i>
Aus 254 <b>(Edition 4)</b>	Australia - East Coast - Queensland - Plans in Whitsundays Plans: Stonehaven Anchorage Hamilton and Dent Islands Fitzalan Passage Lindeman Island Hook Reef	1:12 500 1:15 000 1:25 000 1:37 500 1:75 000	6/3/2025	New edition with general updating throughout; including latest bathymetric data. <b>Chart Aus 254 Edition 3 dated 14 Aug 2015 is now superseded and must be withdrawn from use.</b>
SLB 101 <b>(Edition 4)</b>	South Pacific Ocean - Solomon Islands - Anchorages in Guadalcanal Island Plans: Honiara Lungga Roads Marau Sound	1:5 000 1:20 000 1:50 000	6/3/2025	New edition with general updating throughout; including infrastructure and latest bathymetric data. <b>Chart SLB 101 Edition 3 dated 21 Feb 2020 is now superseded and must be withdrawn from use.</b>

**Admiralty publication**

<i>NP No</i>	<i>Title</i>	<i>Date</i>	<i>Remarks</i>
NP282(1)	Admiralty List of Radio Signals. Radio Aids to Navigation, Differential GPS (DGPS), Legal Time, Radio Time Signals and Electronic Position Fixing System Europe, Africa and Asia (excluding the Far East). Volume 2 Part 1 6th Edition (2025)	20/3/2025	The 5th Edition 2024 of NP282(1) is cancelled.
NP282(2)	Admiralty List of Radio Signals Radio Aids to Navigation, Differential GPS (DGPS), Legal Time, Radio Time Signals and Electronic Position Fixing System The Americas, Far East and Oceania Volume 2 Part 2 6th Edition (2025)	20/3/2025	The 5th Edition 2024 of NP282(2) is cancelled.

**Chart permanently withdrawn**

Charts listed above as withdrawn no longer meet chart carriage requirements and should be marked as "superseded" and replaced with the new chart/ new edition listed prior to passage through the area covered by the new chart.

When placing orders with a chart agent between notice of forthcoming edition and its publication, mariners should advise whether their order pertains to the current edition or the new edition.

For further details refer to the AHO website at [www.hydro.gov.au](http://www.hydro.gov.au) for new edition and new chart stock arrival information.

**240 AUSTRALIA - Products - New Charts and New Editions to be published shortly**  
Australian Hydrographic Office

**New Charts to be published shortly**

Chart	Title	Scale	Remarks
NIL			

**New Editions to be published shortly**

Chart	Title	Scale	Remarks
Aus 755	Australia - West Coast - Western Australia - Cape Peron to Cape Naturaliste	1:150 000	New edition with general updating throughout; including latest bathymetric data.

**241 AUSTRALIA - QUEENSLAND - Gold Coast Seaway to Rous Channel - Depths; artificial reef**  
Maritime Safety Queensland

**Aus 814 [949/2024]**

Insert	fish haven with minimum depth, <i>5m</i> , centred on depth, <i>4<sub>2</sub>m</i> , and extend contour NE to enclose	27° 24'.39 S 27° 55'.61 S	153° 18'.54 E 153° 26'.49 E
Delete	depth, <i>4<sub>1</sub>m</i>	27° 55'.7 S	153° 26'.2 E

**242 AUSTRALIA - QUEENSLAND - Whitsunday Group - Lindeman Island to Hayman Island - Depths**  
Australian Hydrographic Office

**Aus 252 [164/2025]**

Insert	<a href="#">accompanying block A</a> <a href="#">accompanying block B</a>	20° 04'.5 S 20° 28'.0 S	148° 53'.5 E 149° 02'.5 E
Delete	depth, 10m	20° 26'.5 S	149° 04'.5 E

**Aus 253 [97/2024]**

Insert	depth, <i>35m</i>	20° 24'.760 S	149° 04'.232 E
Delete	depth, 33m	20° 24'.84 S	149° 04'.04 E

**Aus 824 [126/2025]**

Replace	depth, <i>21<sub>5</sub>m</i> , with depth, <i>23<sub>5</sub>m</i>	20° 24'.7 S	149° 01'.0 E
	depth, 33m, with depth, <i>35m</i>	20° 24'.8 S	149° 04'.2 E
	depth, 40m, with depth, <i>38m</i>	20° 25'.9 S	149° 04'.3 E
	depth, 28m, with depth, <i>27<sub>2</sub>m</i>	20° 27'.0 S	149° 04'.2 E
Delete	depth, 10m	20° 26'.5 S	149° 04'.5 E

**Aus 825 [121/2025]**

Insert	<a href="#">accompanying block</a>	20° 04'.000 S	148° 55'.400 E
--------	------------------------------------	---------------	----------------

**243 AUSTRALIA - WESTERN AUSTRALIA - Garden Island - Historic wreck westwards**  
Western Australian Museum

**Aus 754 [132/2025]**

Insert	depth, <i>36m</i> , enclosed by danger circle with magenta legend, <i>Historic Wk</i> (see Note)	32° 09'.02 S	115° 29'.97 E
--------	--	--------------	---------------

**244 AUSTRALIA - WESTERN AUSTRALIA - King George Sound - Depths**

Department of Transport WA

**Aus 118 [896/2024]**

Insert	depth, 9 <sub>8</sub> m, enclosed by contour	35° 02'.48 S	117° 58'.42 E
	depth, 10m, enclosed by contour	35° 02'.53 S	117° 56'.64 E
	depth, 6 <sub>8</sub> m	35° 02'.84 S	117° 59'.62 E

Replace	depth, 5 <sub>8</sub> m, with depth, 3 <sub>5</sub> m, enclosed by contour	35° 02'.8 S	117° 59'.8 E
---------	--	-------------	--------------

**Aus 336 [NE 21/6/2024]**

Insert	contour value, 10	35° 02'.95 S	118° 00'.76 E
--------	-------------------	--------------	---------------

Replace	depth, 5 <sub>8</sub> m, with depth, 3 <sub>5</sub> m, enclosed by contour	35° 02'.8 S	117° 59'.8 E
---------	--	-------------	--------------

**Aus 337 [736/2024]**

Insert	contour value, 10	35° 02'.95 S	118° 00'.76 E
--------	-------------------	--------------	---------------

Replace	depth, 5 <sub>8</sub> m, with depth, 3 <sub>5</sub> m, enclosed by contour	35° 02'.8 S	117° 59'.8 E
---------	--	-------------	--------------

**245 AUSTRALIA - WESTERN AUSTRALIA - Point Nuyts - Depth**

Cape Goose

**Aus 336 [244/2025]**

Insert	depth, 37m, enclosed by contour with legend, <i>Rep (2025)</i>	35° 05'.09 S	116° 38'.42 E
--------	--	--------------	---------------

**246 AUSTRALIA - WESTERN AUSTRALIA - Port Hedland - Anderson Point - Dredged area**

Pilbara Ports Authority Notice PH2/2025

**Aus 53 [NE 21/2/2025]**

Delete	dashed line, between	20° 19'.7 S	118° 35'.2 E
		20° 19'.6 S	118° 34'.9 E
		20° 19'.8 S	118° 35'.1 E
		20° 19'.7 S	118° 35'.0 E
	legend, 9-7m		

**247 AUSTRALIA - WESTERN AUSTRALIA - Thevenard Island - Scientific instrument**

Pilbara Ports Authority Notice A8/2025

**Aus 743 [206/2025]**

Insert	special pillar light buoy, <i>Fl. 4s</i> , without topmark	21° 24'.49 S	114° 52'.54 E
--------	--	--------------	---------------

**Aus 744 [206/2025]**

Insert	special pillar light buoy, <i>Fl. 4s</i> , without topmark	21° 24'.49 S	114° 52'.54 E
--------	--	--------------	---------------

**248 AUSTRALIA - SOUTH AUSTRALIA - Kangaroo Island - Pennington Bay - Depths southwards**

Guardian Geomatics , Australian Hydrographic Office

**Aus 346 [248/2024]**

Insert	depth, 14 <sub>7</sub> m, enclosed by contour	35° 57'.14 S	137° 49'.53 E
	depth, 21 <sub>8</sub> m, enclosed by contour	36° 06'.97 S	137° 41'.65 E
Delete	depth, 18 <sub>3</sub> m, and enclosing contour with legend, Rep (1961) PA	36° 10'.9 S	137° 46'.2 E

**Aus 485 [93/2025]**

Insert	depth, 14 <sub>7</sub> m, enclosed by contour	35° 57'.14 S	137° 49'.53 E
	depth, 21 <sub>8</sub> m, enclosed by contour	36° 06'.97 S	137° 41'.65 E
Delete	depth, 40m	36° 06'.5 S	137° 42'.4 E
	depth, 18 <sub>3</sub> m, and enclosing contour with legend, Rep (1961) PA	36° 10'.9 S	137° 46'.2 E

**Aus 4709 (INT 709) [400/2024]**

Insert	contour, between	36° 10'.5 S	137° 28'.7 E
		36° 07'.4 S	137° 42'.1 E
		35° 57'.7 S	137° 55'.3 E
Delete	contour, between	36° 10'.5 S	137° 28'.7 E
		35° 57'.7 S	137° 55'.3 E
	depth, 18 <sub>3</sub> m, and enclosing contour with legend, Rep	36° 10'.9 S	137° 46'.2 E

**249 AUSTRALIA - VICTORIA - Corner Inlet - Port Albert Entrance to Little Snake Island - Depths; buoys**

Gippsland Ports

**Aus 181 [133/2025]**

Insert	accompanying block A	38° 43'.0 S	146° 30'.0 E
	accompanying block B	38° 43'.0 S	146° 35'.0 E
	accompanying block C	38° 43'.0 S	146° 40'.0 E

**Aus 357 [590/2021]**

Insert	accompanying block	38° 53'.0 S	146° 51'.0 E
--------	--------------------	-------------	--------------

**250 AUSTRALIA - TASMANIA - Maria Island - Depths**

Australian Hydrographic Office

**Aus 766 [853/2023]**

Insert	continuous line, between	42° 38'.49 S	148° 17'.19 E
		42° 38'.73 S	148° 17'.02 E
		42° 39'.70 S	148° 17'.43 E
	depth, 49m, enclosed by contour	42° 34'.50 S	148° 09'.25 E
Delete	contour, between	42° 38'.5 S	148° 17'.2 E
		42° 39'.7 S	148° 16'.0 E

**Aus 797 [777/2024]**

Insert	continuous line, between	42° 38'.49 S	148° 17'.19 E
		42° 38'.73 S	148° 17'.02 E
		42° 39'.99 S	148° 17'.55 E
		42° 40'.10 S	148° 17'.48 E
		42° 40'.10 S	148° 16'.69 E
	depth, 49m, enclosed by contour	42° 34'.50 S	148° 09'.25 E
	depth, 100m	42° 40'.01 S	148° 17'.33 E
Delete	contour, between	42° 38'.5 S	148° 17'.2 E
		42° 40'.1 S	148° 16'.7 E



**251 SOLOMON ISLANDS - Guadalcanal Island - Honiara - Lungga Roads - Depths**

Aero Asahi Corporation

**SLB 201 [692/2022]**Insert [accompanying block](#)

9° 23'.0 S

159° 58'.7 E

**SLB 303 [934/2023]**Insert [accompanying block](#)

9° 27'.0 S

159° 56'.5 E

**SLB 304 [934/2023]**Insert [accompanying block](#)

9° 27'.0 S

159° 58'.0 E

**252(T)/2025 AUSTRALIA - QUEENSLAND - Brisbane River - Lytton Rocks Reach - Light unlit**  
Maritime Safety Queensland Notice 85(T)/2025

The leading light, *Iso.G.2s (Iso.2s Day) No1RN* (27° 24'.37 S 153° 08'.52 E), is unlit.

**Chart temporarily affected - Aus 236 - Aus 237**

**253(T)/2025 AUSTRALIA - QUEENSLAND - Bundaberg - Burnett River - Shoaling charted**  
*Former Notice - 388(P)/2022* is cancelled  
Australian Hydrographic Office

Cancel this notice on receipt.

**Chart formerly affected - Aus 242**

**254(T)/2025 AUSTRALIA - QUEENSLAND - Burrum River - Beacon destroyed**  
Maritime Safety Queensland Notice 87(T)/2025

The beacon (25° 10'.92 S 152° 37'.19 E) has been destroyed.

Mariners are advised to navigate with caution in the area.

**Chart temporarily affected - Aus 817**

**255(T)/2025 AUSTRALIA - QUEENSLAND - Gold Coast - Main Beach - Light buoy off station eastwards**  
Maritime Safety Queensland Notice 601(T)/2024, 84(T)/2025

The special light buoy, *Fl.Y.3s* (27° 57'.60 S 153° 27'.43 E), is off station.

**Chart temporarily affected - Aus 814**

**256(T)/2025 AUSTRALIA - QUEENSLAND - Mooloolaba - Shoaling**  
Maritime Safety Queensland Notice 92(T)/2025

The 2m contour that exists adjacent to the eastern breakwater now extends in a westerly direction past the centreline of the channel to position 26° 40'.80 S 153° 07'.80 E.

Mariners should navigate with caution.

**Chart temporarily affected - Aus 236**

**257(T)/2025 AUSTRALIA - QUEENSLAND - Moreton Bay - Brisbane River - Nav aids destroyed or off station; depths**  
Maritime Safety Queensland

Nav aids in Moreton Bay and the Brisbane River may be destroyed or off station due to recent flooding.

Obstructions may exist and depths may not be consistent with charted information.

Mariners are advised to navigate with caution in the area.

**Chart temporarily affected - Aus 236 - Aus 237**

**258(T)/2025 AUSTRALIA - QUEENSLAND - North Stradbroke Island - Light buoy off station eastwards**  
Department of Primary Industries

The special light buoy, *Fl.Y.3s FAD* (27° 41'.28 S 153° 36'.83 E), is off station and in position 27° 29'.86 S 153° 38'.46 E.

**Chart temporarily affected - Aus 814**

**259(T)/2025 AUSTRALIA - NORTHERN TERRITORY - Darwin - Middle Passage - Wreck**  
Northern Territory Government Notice 23/2025

A wreck exists in position 12° 18'.67 S 130° 43'.05 E.

**Chart temporarily affected - Aus 25 - Aus 309**

**260(T)/2025 AUSTRALIA - WESTERN AUSTRALIA - Barrow Island - Subsea operations complete**  
*Former Notice - 977(T)/2024 is cancelled*  
Australian Maritime Safety Authority

Cancel this notice on receipt.

**Chart formerly affected - Aus 328**

**261(T)/2025 AUSTRALIA - WESTERN AUSTRALIA - Dampier - Rio Tinto Channel - Light buoy restored**  
*Former Notice - 142(T)/2025 is cancelled*  
Pilbara Ports Authority

Cancel this notice on receipt.

**Chart formerly affected - Aus 57 - Aus 327**

**262(T)/2025 AUSTRALIA - WESTERN AUSTRALIA - Dampier Archipelago - Roly Rock - Drill rig**  
Crane Worldwide Logistics

Drill rig *Transocean Endurance* is moored in position 20° 28'.92 S 116° 30'.24 E.

**Chart temporarily affected - Aus 57 - Aus 327 - Aus 742**

**263(T)/2025 AUSTRALIA - WESTERN AUSTRALIA - Esperance Bay to Eastern Group - Survey operations; scientific instruments**  
*Former Notice - 221(T)/2025 is cancelled*  
Revelare Hydrospatial

During hydrographic survey operations, subsurface tide gauges with release buoys will be deployed in an area bounded by the following positions:

34° 13'.37 S 123° 59'.24 E  
34° 13'.12 S 124° 19'.17 E  
33° 34'.52 S 124° 19'.37 E  
33° 34'.82 S 124° 07'.20 E  
33° 44'.03 S 123° 58'.84 E  
33° 59'.75 S 123° 35'.86 E  
34° 07'.46 S 123° 38'.96 E.

An additional subsurface tide gauge with release buoy will be deployed in position 33° 57'.00 S 121° 49'.60 E.

A special light buoy, *Fl.Y.1-5s*, will be deployed for 72 hours at various locations during the survey.

Mariners are advised to navigate with caution in the area.

**Chart temporarily affected - Aus 119 - Aus 762 - Aus 763 - Aus 4709 (INT 709)**

**264(T)/2025 AUSTRALIA - WESTERN AUSTRALIA - Hilarys Boat Harbour - Scientific instrument westwards**  
University of Western Australia

A special light buoy, *Fl.Y.2-5s*, exists in position 31° 50'.72 S 115° 38'.78 E.

**Chart temporarily affected - Aus 754 - Aus 4060 (INT 60) - Aus 4070 (INT 70) - Aus 4708 (INT 708) - Aus 4709 (INT 709)**

**265(T)/2025 AUSTRALIA - WESTERN AUSTRALIA - King George Sound - Middleton Bay - Artificial reef**  
Department of Transport WA Notice 6371/2025

Works are in progress to establish an artificial reef in the vicinity of position 35° 01'.09 S 117° 55'.25 E.

Mariners are advised to navigate with caution in the area and keep well clear of the works.

**Chart temporarily affected - Aus 118**

**266(T)/2025 AUSTRALIA - WESTERN AUSTRALIA - Oyster Harbour - Wreck**  
Department of Transport WA Notice 6362/2025

A stranded wreck exists in position 34° 59'.08 S 117° 56'.76 E.

Mariners are advised to navigate with caution in the area.

**Chart temporarily affected - Aus 118**

**267(T)/2025 AUSTRALIA - SOUTH AUSTRALIA - Port Bonython - Light beacon relit**  
*Former Notice - 884(T)/2024 is cancelled*  
Department for Infrastructure and Transport SA

Cancel this notice on receipt.

**Chart formerly affected - Aus 136 - Aus 778**

**268(P)/2025 AUSTRALIA - VICTORIA - Kate Kearney Channel to McLoughlins Entrance - Shoaling**  
*Former Notice - 895(P)/2020 is cancelled*  
Gippsland Ports

Latest survey shows shoaling and channel realignment in the following channels:

Kate Kearney Channel (38° 41'.7 S 146° 43'.0 E)  
Kate Kearney Entrance (38° 41'.5 S 146° 45'.1 E)  
Tarra Channel (38° 40'.8 S 146° 45'.7 E)  
Boat Harbour Channel (38° 40'.4 S 146° 48'.4 E)  
Pelican Channel (38° 39'.3 S 146° 48'.7 E)  
Manns Beach Channel (38° 38'.8 S 146° 47'.4 E)  
Manns Channel (38° 40'.5 S 146° 49'.6 E)  
Oyster Bed Channel (38° 38'.5 S 146° 51'.2 E)  
McLoughlins Entrance (38° 37'.8 S 146° 53'.0 E).

Mariners are advised to navigate with caution in the area.

Charts will be updated in due course.

**Chart which will be affected - Aus 181**

**269(T)/2025 AUSTRALIA - VICTORIA - Port Campbell - Subsea operations complete**  
*Former Notice - 153(T)/2025 is cancelled*  
Amplitude energy

Cancel this notice on receipt.

**Chart formerly affected - Aus 349**

**270(T)/2025 AUSTRALIA - VICTORIA - Port Campbell - Scientific instrument southwards**  
Fugro

A special light buoy, *Fl(5)Y.20s*, exists in position 38° 43'.69 S 142° 56'.64 E.

**Chart temporarily affected - Aus 349**

**271(T)/2025 AUSTRALIA - VICTORIA - Port Fairy - Scientific instrument southwards**  
Deakin University

A special light buoy, *Fl.Y.2.5s*, exists in positions 38° 38'.55 S 142° 18'.69 E.

**Chart temporarily affected - Aus 349**

**272(T)/2025 AUSTRALIA - VICTORIA - Port Phillip - Altona - Buoy off station**  
Parks Victoria Notice 156(T)/2025

The special buoy (37° 52'.38 S 144° 49'.61 E) is off station.

Mariners are advised to navigate with caution in the area.

**Chart temporarily affected - Aus 155**

**273(T)/2025 AUSTRALIA - VICTORIA - Western Port - Gentle Annie Channel - Beacon destroyed**  
Parks Victoria Notice 155(T)/2025

The starboard lateral beacon, *No1* (38° 15'.31 S 145° 19'.22 E), has been destroyed.

Mariners are advised to navigate with caution in the area.

**Chart temporarily affected - Aus 151**

**274(T)/2025 AUSTRALIA - TASMANIA - Flinders Island - Lady Barron - Light unlit**  
Marine and Safety Tasmania Notice M160(T)/2025

The light, *F.G.3M* (40° 12'.58 S 148° 14'.89 E), is unlit.

Mariners are advised to navigate with caution in the area.

**Chart temporarily affected - Aus 179**

**275(T)/2025 SOLOMON ISLANDS - Guadalcanal Island - Honiara - Lungga Roads - Wrecks charted; shoaling charted**

*Former Notices* - 677(P)/2017, 878(T)/2023, 987(P)/2023 are cancelled  
Australian Hydrographic Office, Aero Asahi Corporation

Cancel this notice on receipt.

**Chart formerly affected - SLB 101 - SLB 201**

**276(T)/2025 SOLOMON ISLANDS - New Georgia Group - South Island - Light unlit**  
Solomon Islands Maritime Authority NTM 01/2025

The light, *Fl.10s 11m 10M* (08° 48'.88 S 157° 45'.22 E), is unlit;

**Chart temporarily affected - Aus 4060 (INT 60) - Aus 4604 (INT 604) - SLB 302 - SLB 1001 - SLB 1002**

## HYDROGRAPHIC REPORTS

<i>Locality</i>	<i>Report</i>	<i>Ship/Authority</i>	<i>Observer</i>
WA- Point Nuyts	Depth	<i>Cape Goose</i>	B Ashman

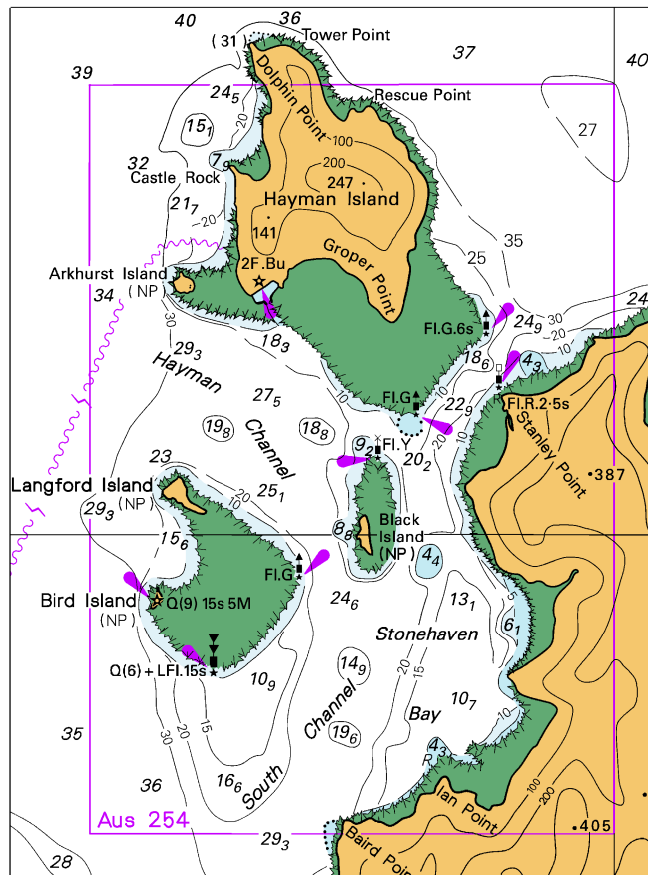
To accompany Australian Notice to Mariners 242/2025



Block B for chart Aus 252 © Commonwealth of Australia 2025

(118.2 x 147.7mm)

To accompany Australian Notice to Mariners 242/2025



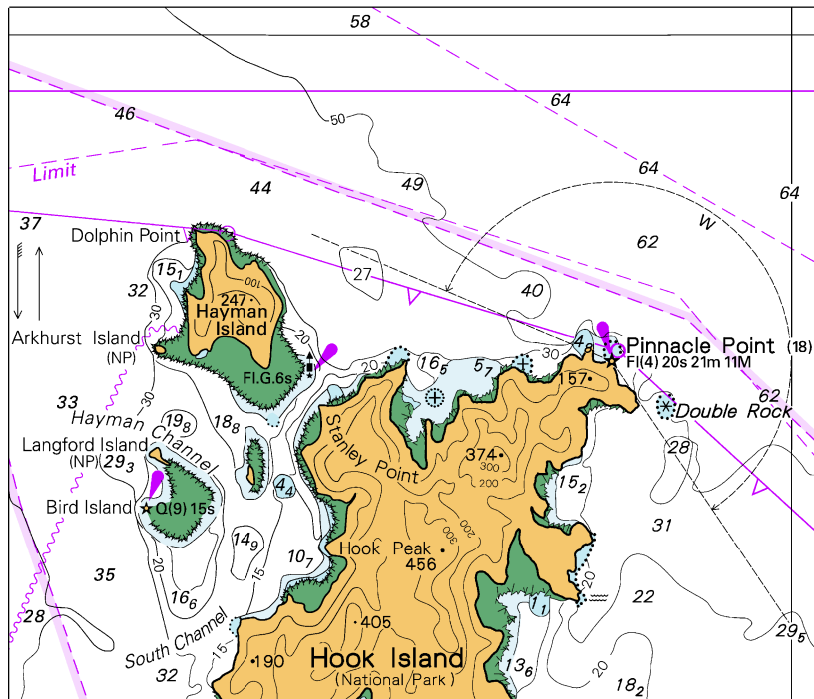
Block A for chart Aus 252

(85.0 x 114.9mm)

© Commonwealth of Australia 2025



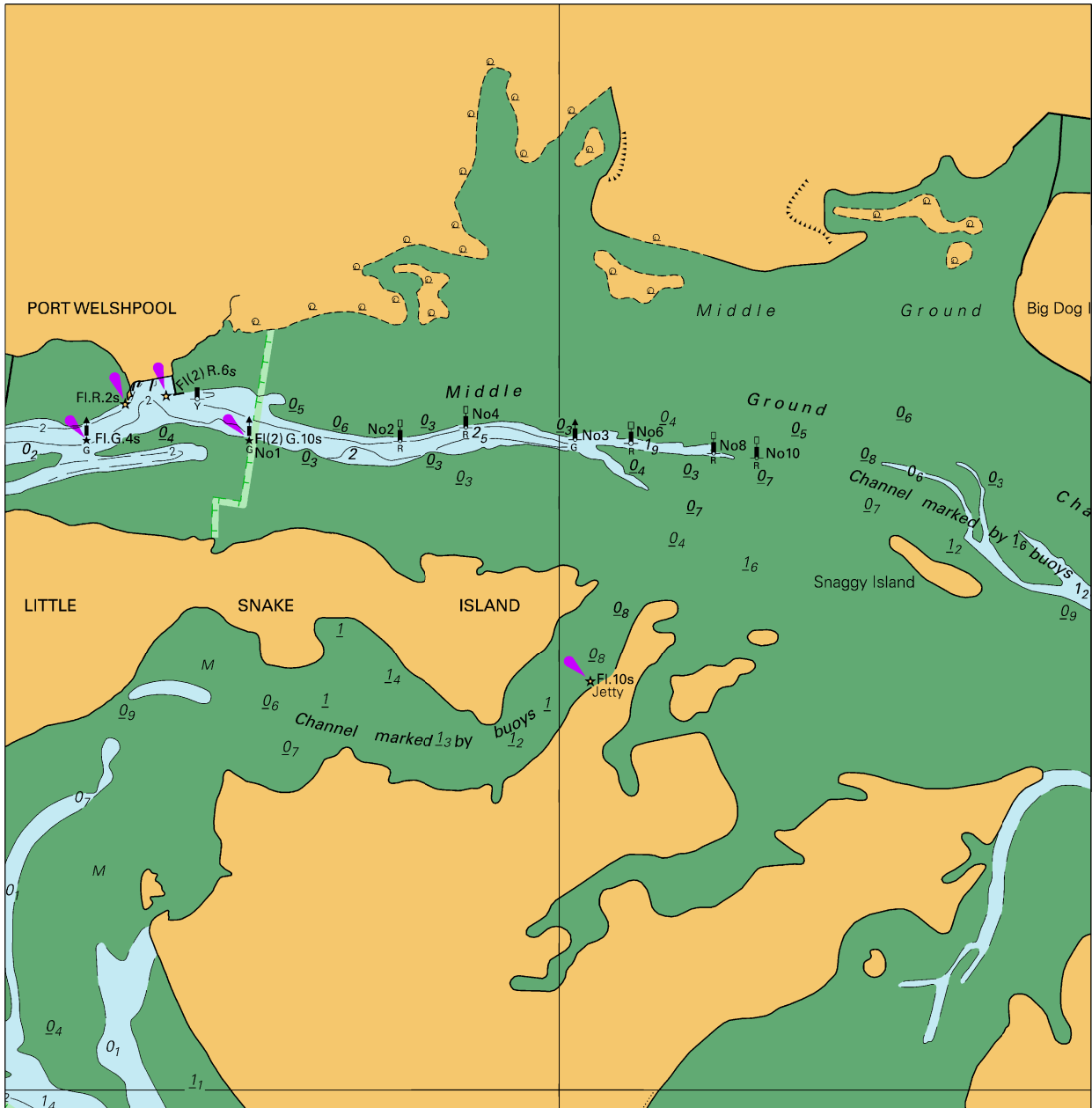
To accompany Australian Notice to Mariners 242/2025



Block for chart Aus 825 © Commonwealth of Australia 2025

(107.8 x 91.5mm)

To accompany Australian Notice to Mariners 249/2025

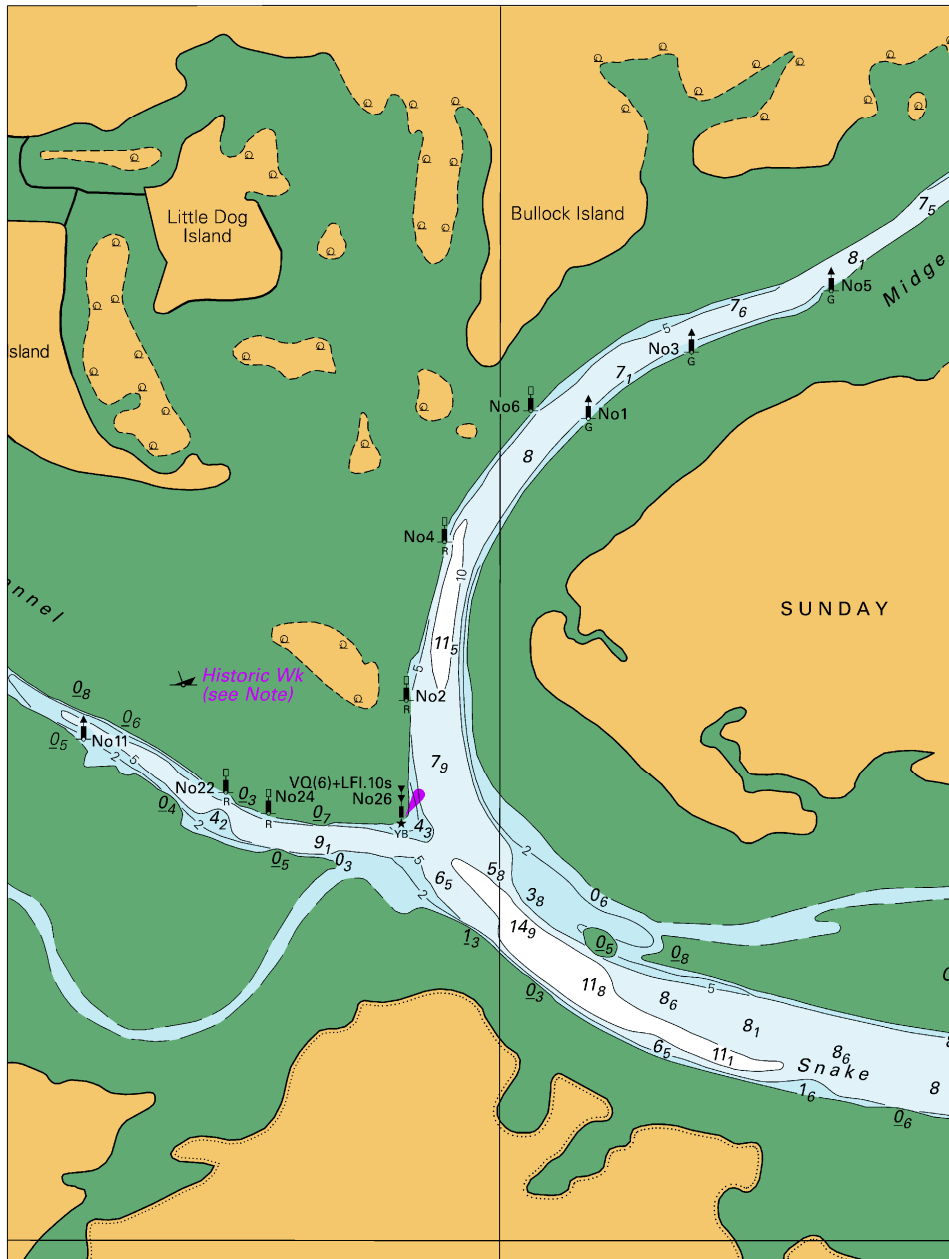


Block A for chart Aus 181

© Commonwealth of Australia 2025

(163.1 x 166.2mm)

To accompany Australian Notice to Mariners 249/2025

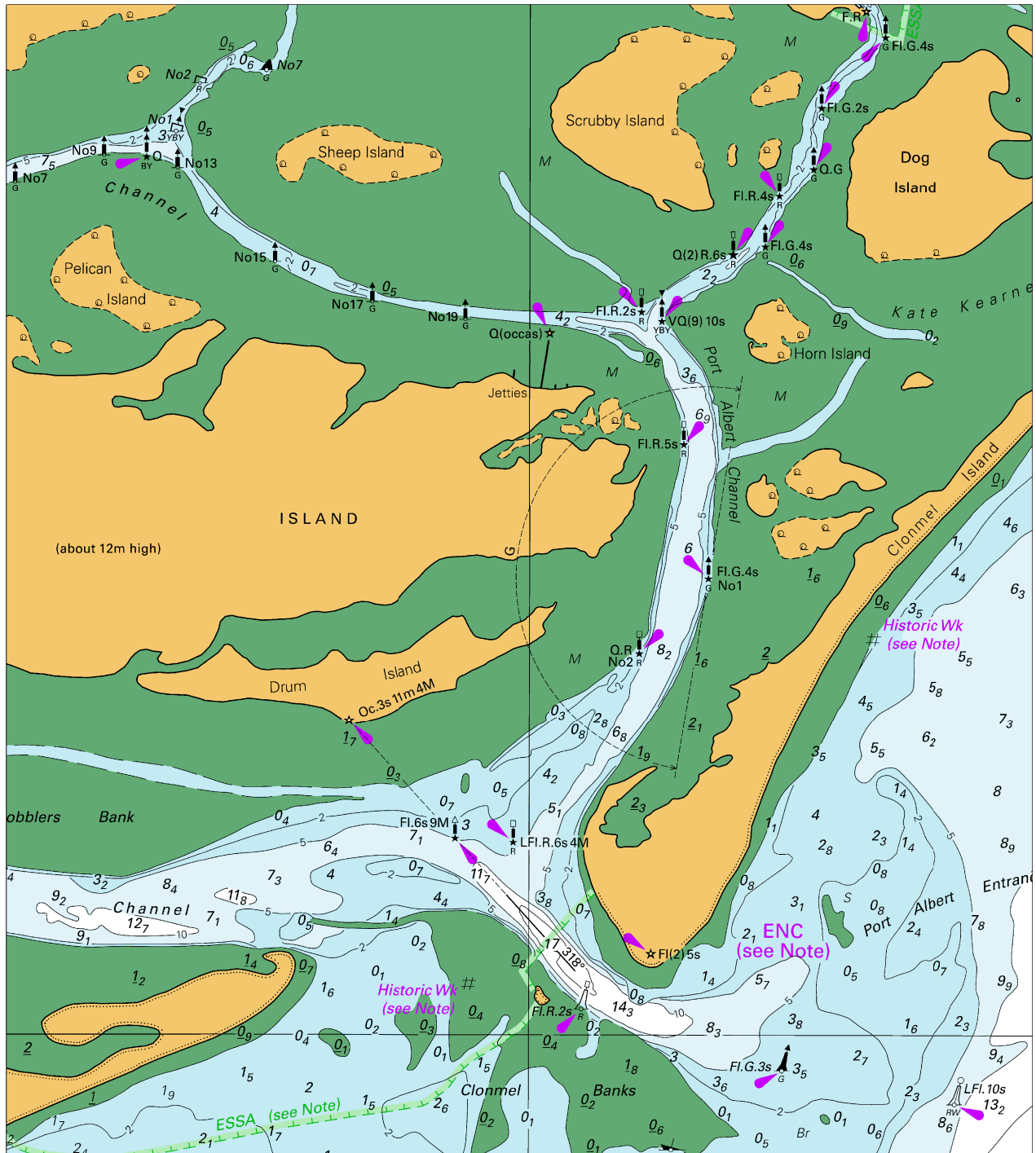


Block B for chart Aus 181

© Commonwealth of Australia 2025

(125.2 x 166.5mm)

To accompany Australian Notice to Mariners 249/2025

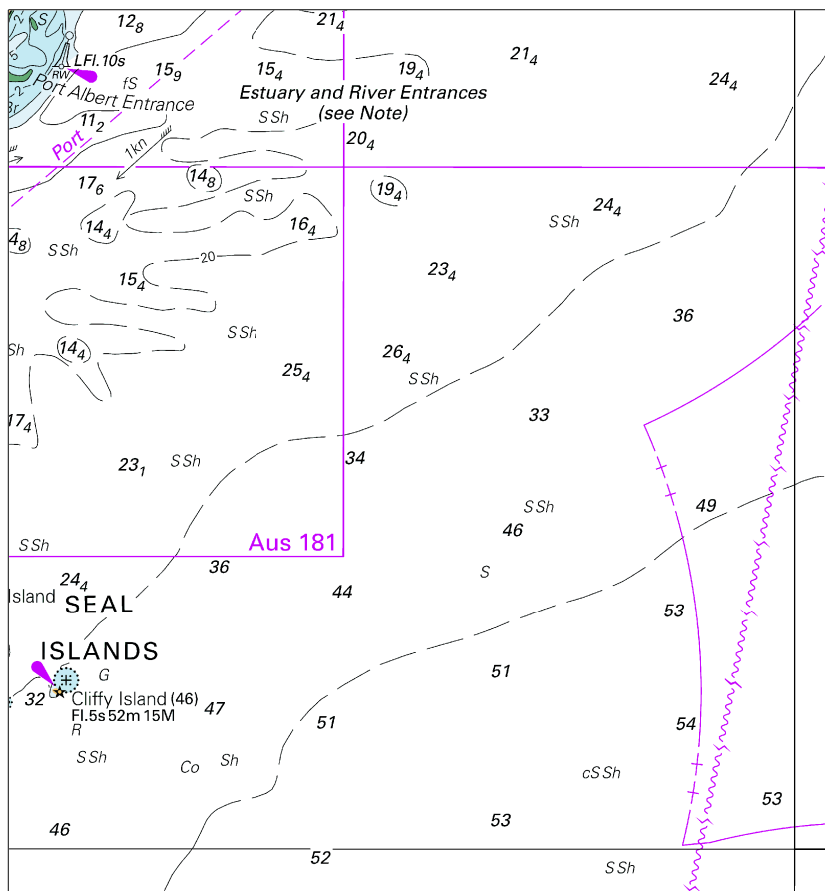


Block C for chart Aus 181

© Commonwealth of Australia 2025

(166.8 x 186.8mm)

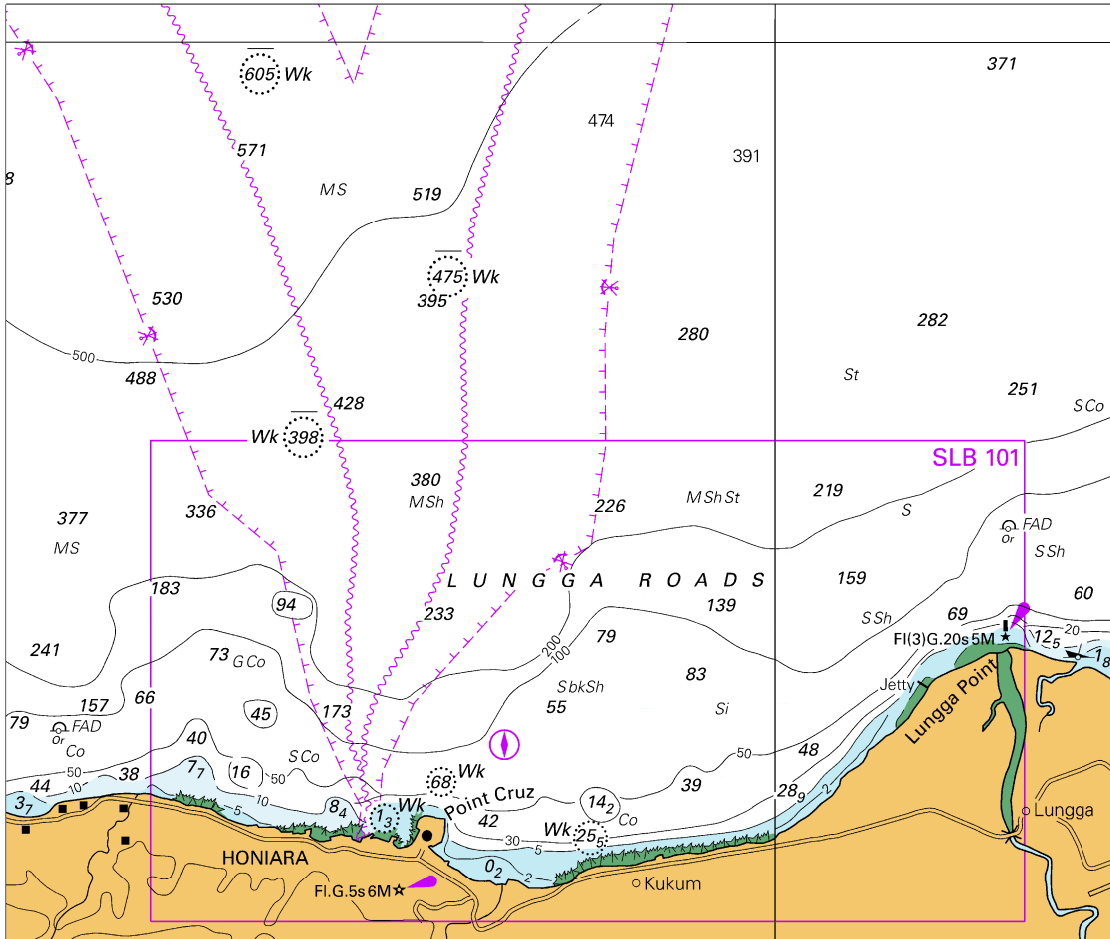
To accompany Australian Notice to Mariners 249/2025



Block for chart Aus 357 © Commonwealth of Australia 2025

(109.2 x 116.9mm)

To accompany Australian Notice to Mariners 251/2025

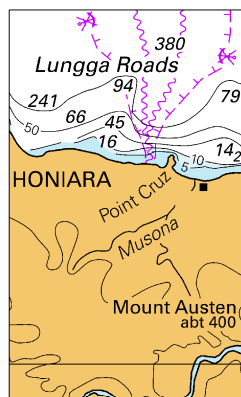


Block for chart SLB 201

© Commonwealth of Australia 2025

(146.4 x 123.9mm)

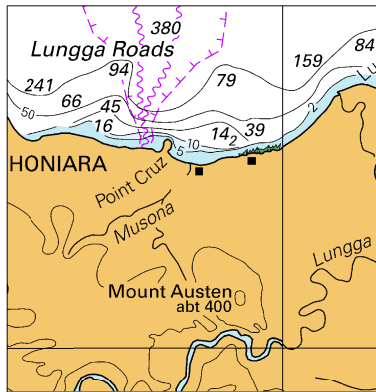
To accompany Australian Notice to Mariners 251/2025



Block for chart SLB 303 (31.1 x 51.3mm)

© Commonwealth of Australia 2025

To accompany Australian Notice to Mariners 251/2025



Block for chart SLB 304 (49.6 x 51.1mm)

© Commonwealth of Australia 2025