



7 March 2025

Edition 5

AUSTRALIAN NOTICES TO MARINERS

Notices 199 - 238

Published fortnightly by the Australian Hydrographic Office



Australian Notices to Mariners are the authority for correcting charts and publications published by the Australian Hydrographic Office covering Australia, Papua New Guinea, Solomon Islands, Australian Antarctic Territory and Timor-Leste.

Commodore R.L. PHILLIPS RAN
Hydrographer of Australia

SECTIONS.

- I. **Australian Notices to Mariners, including blocks and notes.**
- II. **Hydrographic Reports.**

SUPPLEMENTS.

- I. **Tracings**
 - II. **Cumulative List of Australian Notices to Mariners.**
 - III. **Cumulative List of Temporary and Preliminary Australian Notices to Mariners.**
 - IV. **Temporary and Preliminary Notices in force.**
-
-

© Commonwealth of Australia 2025

This work is copyright. Apart from any use permitted under the Copyright Act 1968, no part may be reproduced by any process, adapted, communicated or commercially exploited without prior written permission from The Commonwealth represented by the Australian Hydrographic Office.

IMPORTANT NOTICE

This edition of Notices to Mariners includes all significant information affecting AHO products which the AHO has become aware of since the last edition. All reasonable efforts have been made to ensure the accuracy and completeness of the information, including third party information, on which these updates are based. The AHO regards third parties from which it receives information as reliable, however the AHO cannot verify all such information and errors may therefore exist. The AHO does not accept liability for errors in third party information.

GENERAL INSTRUCTIONS

The substance of these notices should be inserted on the charts affected.

Bearings are referred to the true compass and are reckoned clockwise from North; those relating to lights are given as seen by an observer from seaward.

Positions quoted in notices relate to WGS84 which is the horizontal datum for all charts produced by the Australian Hydrographic Office.

The range quoted for a light is its nominal range.

Depths are with reference to the chart datum of each chart. Heights are above mean high water springs or mean higher high water, as appropriate.

The capital letter (P) or (T) after the number of any notice denotes a preliminary or temporary notice respectively, which are contained separately at the end of the permanent notices.

REPORTING OF DANGERS

Mariners are particularly requested to notify the AUSTRALIAN HYDROGRAPHIC OFFICE, Locked Bag 8801 Wollongong, NSW 2500 (e-mail datacentre@hydro.gov.au or, alternatively by filling in and submitting the [Hydrographic Notes](#) forms located on the web site – www.hydro.gov.au), immediately on the discovery of new dangers or suspected dangers to navigation. For changes or defects in aids to navigation notify AusSAR (Fax 02-6230 6868 or email rccaus@amsa.gov.au).

AUTHORISED USE

Copies of Australian notices are available free of charge from the Australian Hydrographic Office (AHO) website (www.hydro.gov.au) and through the eNotices (email) service (www.hydro.gov.au/enotices/enotices.htm).

Individual Notices may be copied for the purpose of inserting Notice substance on official charts and publications. Paper copies may be printed by chart agents and distributed to customers on a cost recovery basis. Participating chart agents are listed on the AHO website as providing a 'Paper Notices to Mariners' service (www.hydro.gov.au/prodserv/agents-list.htm). Copies of the notices may not be sold for profit without prior written agreement.

NUMERICAL INDEX OF NOTICES TO MARINERS

Edition No 5

Notices	Aus Chart, INT Chart, ENC Cell, AHP, BA Pubs
199	Aus 130
200	Aus 254, SLB 101
201	Aus 200
202	Aus 25, 26
203	Aus 112
204	Aus 318
205	Aus 326
206	Aus 64, 743, 744
207	Aus 116
208	Aus 781
209	Aus 151
210(T)	Aus 806
211(T)	Aus 255, 268, 825, 826, 4602, 4603, 4604, INT 602, 603, 604
212(T)	Aus 268
213(T)	Aus 819, 820
214(T)	Aus 259
215(T)	Aus 258
216(T)	Aus 301
217(T)	Aus 25, 26
218(T)	Aus 314, 319, 4722, INT 722
219(P)	Aus 115
220(T)	Aus 115
221(T)	Aus 119, 762, 763, 4709, INT 709
222(T)	Aus 319, 4722, 4723, INT 722, 723
223(T)	Aus 755, 4708, 4709, 4710, INT 708, 709, 710
224(T)	Aus 81
225(T)	Aus 327
226(T)	Aus 328, 329, 744
227(T)	Aus 328, 329
228(T)	Aus 326
229(T)	Aus 754
230(T)	Aus 341, 342, 4709, INT 709
231(T)	Aus 349, 487
232(T)	Aus 357, 487
233(T)	Aus 143
234(P)	Aus 155
235(T)	Aus 140
236(T)	Aus 173
237(T)	Aus 171
238(T)	Aus 487, 790

NUMERICAL INDEX OF CHARTS AFFECTED

Edition No 5

Aus Chart	Notices
Aus 25	202, 217(T)
Aus 26	202, 217(T)
Aus 64	206
Aus 81	224(T)
Aus 112	203
Aus 115	219(P), 220(T)
Aus 116	207
Aus 119	221(T)
Aus 130	199
Aus 140	235(T)
Aus 143	233(T)
Aus 151	209
Aus 155	234(P)
Aus 171	237(T)
Aus 173	236(T)
Aus 200	201
Aus 254	200
Aus 255	211(T)
Aus 258	215(T)
Aus 259	214(T)
Aus 268	211(T), 212(T)
Aus 301	216(T)
Aus 314	218(T)
Aus 318	204
Aus 319	218(T), 222(T)
Aus 326	205, 228(T)
Aus 327	225(T)
Aus 328	226(T), 227(T)
Aus 329	226(T), 227(T)
Aus 341	230(T)
Aus 342	230(T)
Aus 349	231(T)
Aus 357	232(T)
Aus 487	231(T), 232(T), 238(T)
Aus 743	206
Aus 744	206, 226(T)
Aus 754	229(T)
Aus 755	223(T)
Aus 762	221(T)
Aus 763	221(T)
Aus 781	208
Aus 790	238(T)
Aus 806	210(T)
Aus 819	213(T)
Aus 820	213(T)
Aus 825	211(T)
Aus 826	211(T)
Aus 4602	211(T)
Aus 4603	211(T)
Aus 4604	211(T)
Aus 4708	223(T)
Aus 4709	221(T), 223(T), 230(T)
Aus 4710	223(T)
Aus 4722	218(T), 222(T)

Aus Chart	Notices
Aus 4723	222(T)
SLB 101	200

INT Chart	Notices
INT 602	211(T)
INT 603	211(T)
INT 604	211(T)
INT 708	223(T)
INT 709	221(T), 223(T), 230(T)
INT 710	223(T)
INT 722	218(T), 222(T)
INT 723	222(T)

199 AUSTRALIA - Products - New Charts, New Editions, Withdrawn Charts

Australian Hydrographic Office

New Charts

Chart	Title and Geographical limits	Scale	Publication Date	Remarks
NIL				

New Electronic Navigation Chart (Aus ENC)

Cell Name	Title	Publication Date	Remarks
SB5HIR01	Solomon Islands - Guadalcanal Island - Honiara and approaches	27/2/2025	SB5101P1 is withdrawn.
AU5MOU01	Australia - Queensland - Mourilyan	4/3/2025	AU5258P1 is withdrawn.
AU5RIS01	Australia - Queensland - Red Island Point	4/3/2025	AU5294P1 is withdrawn.

New Editions and Withdrawn Charts

Chart	Title	Scale	Publication Date	Remarks
Aus 130 (Edition 4)	Australia - South Coast - South Australia - Approaches to Port Adelaide	1:37 500	7/3/2025	New edition with general updating throughout; including new bathymetric data. Produced with blue contours. Chart Aus 130 Edition 3 dated 13 May 2022 is now superseded and must be withdrawn from use.

Chart permanently withdrawn

Charts listed above as withdrawn no longer meet chart carriage requirements and should be marked as "superseded" and replaced with the new chart/ new edition listed prior to passage through the area covered by the new chart.

When placing orders with a chart agent between notice of forthcoming edition and its publication, mariners should advise whether their order pertains to the current edition or the new edition.

For further details refer to the AHO website at www.hydro.gov.au for new edition and new chart stock arrival information.

200 AUSTRALIA - Products - New Charts and New Editions to be published shortly

Australian Hydrographic Office

New Charts to be published shortly

Chart	Title	Scale	Remarks
NIL			

New Editions to be published shortly

Chart	Title	Scale	Remarks
Aus 254	Australia - East Coast - Queensland - Plans in Whitsundays Plans: Stonehaven Anchorage Hamilton and Dent Islands Fitzalan Passage Lindeman Island Hook Reef	1:12 500 1:15 000 1:25 000 1:37 500 1:75 000	New edition with general updating throughout; including latest bathymetric data.
SLB101	South Pacific Ocean - Solomon Islands - Anchorages in Guadalcanal Island Plans: Honiara Lungga Roads Marau Sound	1:5 000 1:20 000 1:50 000	New edition with general updating throughout; including infrastructure and latest bathymetric data.

201 AUSTRALIA - NEW SOUTH WALES - Port Jackson - Cockatoo Island to Archer Point - Nav aids

Transport for NSW

Aus 200 [947/2024]

Replace	buoy with north cardinal cylindrical buoy with topmark	33° 51'.05 S	151° 10'.05 E
	buoy with port lateral cylindrical buoy without topmark	33° 51'.70 S	151° 09'.56 E
	light buoy with north cardinal cylindrical light buoy, VQ, with topmark	33° 51'.84 S	151° 08'.80 E

Aus 200 (Parramatta River) [947/2024]

Insert	port lateral light beacon, <i>Fl.R.5s</i> , without topmark	33° 49'.314 S	151° 04'.897 E
Amend	light beacon to <i>Fl.G.2s</i>	33° 49'.20 S	151° 04'.51 E
	light beacon to <i>Fl.R.2s</i>	33° 49'.34 S	151° 05'.02 E
Move	light beacon to	33° 49'.46 S 33° 49'.454 S	151° 03'.88 E 151° 03'.897 E
Delete	light beacon	33° 49'.31 S	151° 04'.88 E

202 AUSTRALIA - NORTHERN TERRITORY - Darwin - Pipeline

ConocoPhillips Australia

Aus 25 [86/2025]

Insert	supply pipeline with magenta legend, <i>Gas (see Note)</i> , between	12° 19'.920 S	130° 40'.094 E
		12° 23'.602 S	130° 44'.745 E
		12° 25'.399 S	130° 46'.245 E
		12° 26'.215 S	130° 46'.906 E
		12° 26'.966 S	130° 47'.469 E
		12° 27'.284 S	130° 47'.700 E
	supply pipeline, between	12° 27'.990 S	130° 48'.214 E
		12° 28'.401 S	130° 48'.438 E
		12° 28'.562 S	130° 48'.549 E
		12° 28'.803 S	130° 48'.710 E
		12° 29'.280 S	130° 48'.892 E

Aus 26 [86/2025]

Insert	supply pipeline, between	12° 26'.440 S	130° 47'.075 E
		12° 26'.966 S	130° 47'.469 E
		12° 27'.284 S	130° 47'.700 E
	supply pipeline with magenta legend, <i>Gas (see Note)</i> , between	12° 27'.990 S	130° 48'.214 E
		12° 28'.401 S	130° 48'.438 E
		12° 28'.562 S	130° 48'.549 E
		12° 28'.803 S	130° 48'.710 E
		12° 29'.891 S	130° 49'.124 E
		12° 31'.248 S	130° 49'.855 E
		12° 31'.413 S	130° 49'.990 E
		12° 31'.564 S	130° 50'.180 E
		12° 31'.660 S	130° 50'.373 E
		12° 31'.707 S	130° 50'.532 E
		12° 31'.732 S	130° 50'.731 E
		12° 31'.724 S	130° 50'.914 E
		12° 31'.673 S	130° 51'.144 E
		12° 31'.557 S	130° 51'.622 E

203 AUSTRALIA - WESTERN AUSTRALIA - Fremantle - Deepwater Channel - Light buoy

Fremantle Ports Notice 1/2025

Aus 112 [953/2024]

Insert	special spherical light buoy, <i>Fl(5)Y.20s</i> , without topmark	31° 57'.623 S	115° 38'.631 E
--------	---	---------------	----------------

204 AUSTRALIA - WESTERN AUSTRALIA - Napier Broome Bay - Depths

Australian Hydrographic Office

Aus 318 [815/2024]

Insert	accompanying block	13° 58'.0 S	126° 38'.0 E
--------	------------------------------------	-------------	--------------

205 AUSTRALIA - WESTERN AUSTRALIA - Port Hedland - Depths

Pilbara Ports Authority , Precision Hydrographic Services

Aus 326 [89/2025]

Insert	accompanying ZOC diagram	17° 42'.1 S	117° 17'.9 E
	accompanying block B	20° 06'.0 S	118° 48'.0 E
	accompanying block A	20° 08'.5 S	118° 16'.8 E

206 AUSTRALIA - WESTERN AUSTRALIA - Port of Ashburton - Compulsory pilotage limit; anchoring prohibited limit

Pilbara Ports Authority Notice A1/2025

Note: position of existing chart notes may vary on certain charts.

Aus 64 [672/2024]

Insert	magenta dashed line with legend, <i>Compulsory Pilotage (see Note)</i> , between	21° 37'.00 S	114° 56'.78 E
		21° 37'.00 S	115° 01'.35 E
	magenta dashed line with legend, <i>Compulsory Pilotage (see Note)</i> , between	21° 37'.00 S	115° 01'.49 E
		21° 37'.00 S	115° 04'.58 E
	magenta dashed line with legend, <i>Compulsory Pilotage (see Note)</i> , between	21° 31'.45 S	115° 02'.94 E
		21° 28'.99 S	115° 03'.65 E
		21° 26'.26 S	115° 07'.03 E
		21° 26'.15 S	115° 06'.95 E
		21° 28'.92 S	115° 03'.52 E
		21° 31'.42 S	115° 02'.80 E
	anchoring prohibited limit, between	21° 40'.97 S	115° 00'.21 E
		21° 40'.39 S	115° 00'.22 E
		21° 39'.92 S	115° 00'.55 E
		21° 38'.36 S	115° 00'.34 E
		21° 37'.98 S	115° 00'.20 E
		21° 37'.58 S	115° 00'.04 E
		21° 34'.72 S	114° 58'.35 E
		21° 34'.12 S	114° 57'.90 E
		21° 30'.89 S	114° 55'.00 E
	anchoring prohibited limit, between	21° 34'.01 S	114° 55'.00 E
		21° 34'.55 S	114° 55'.48 E
		21° 34'.75 S	114° 56'.40 E
		21° 35'.61 S	114° 56'.40 E
		21° 38'.59 S	114° 58'.19 E
		21° 38'.69 S	114° 58'.22 E
		21° 40'.40 S	114° 58'.45 E
	accompanying chart note, COMPULSORY PILOTAGE	21° 42'.5 S	115° 09'.0 E

Aus 743 [811/2024]

Insert	accompanying block A	21° 28'.0 S	114° 47'.0 E
	accompanying block B	21° 32'.0 S	115° 00'.0 E

Aus 744 [17/2025]

Insert	accompanying block	21° 30'.0 S	114° 52'.0 E
--------	------------------------------------	-------------	--------------

207 AUSTRALIA - WESTERN AUSTRALIA - Warnbro Sound - Depths

Department of Transport WA , Fugro LADS Corporation

Aus 116 (Warnbro Sound) [736/2024]

Insert	accompanying block A	32° 17'.4 S	115° 38'.0 E
	accompanying block B	32° 21'.7 S	115° 38'.2 E

Aus 116 (Starvation Boat Harbour) [736/2024]

Insert	accompanying ZOC diagram	33° 56'.1 S	120° 34'.7 E
--------	--	-------------	--------------

208 AUSTRALIA - SOUTH AUSTRALIA - Port Adelaide - Depths; VTS

Australian Hydrographic Office

Aus 781 [854/2024]Insert magenta dashed line with legend, *Adelaide VTS*, between

34° 55'.77 S 138° 09'.20 E

34° 58'.51 S 138° 09'.20 E

34° 58'.52 S 138° 21'.91 E

34° 55'.77 S 138° 21'.90 E

34° 49'.0 S 138° 19'.0 E

[accompanying block](#)**209 AUSTRALIA - VICTORIA - Western Port - Western Channel - Light buoy**

Ports Victoria Notice 129/2025

Aus 151 [595/2024]

Delete light buoy

38° 29'.03 S 145° 06'.65 E

210(T)/2025 AUSTRALIA - NEW SOUTH WALES - Eden - Fish aggregating device restored northeastwards

Former Notice - 965(T)/2024 is cancelled

Department of Primary Industries and Regional Development

Cancel this notice on receipt.

Chart formerly affected - Aus 806

211(T)/2025 AUSTRALIA - QUEENSLAND - Abbot Point - Space launch northeastwards

Maritime Safety Queensland Notice 64/2025

Bowen Orbital Spaceport is expected to commence space vehicle launch operations from 15 March 2025. Prior to launch, a safety exclusion area will be activated. Abbot Point VTS will broadcast when the safety exclusion area is activated and again to cancel the safety exclusion area via VHF Ch 12 and Ch 16.

Mariners are advised that a person must not anchor, berth, moor or operate a ship (other than a ship owned and/or operated by Queensland Police Service, Maritime safety Queensland or a ship authorised to assist with the monitoring and management of the safety exclusion area) within the safety exclusion area.

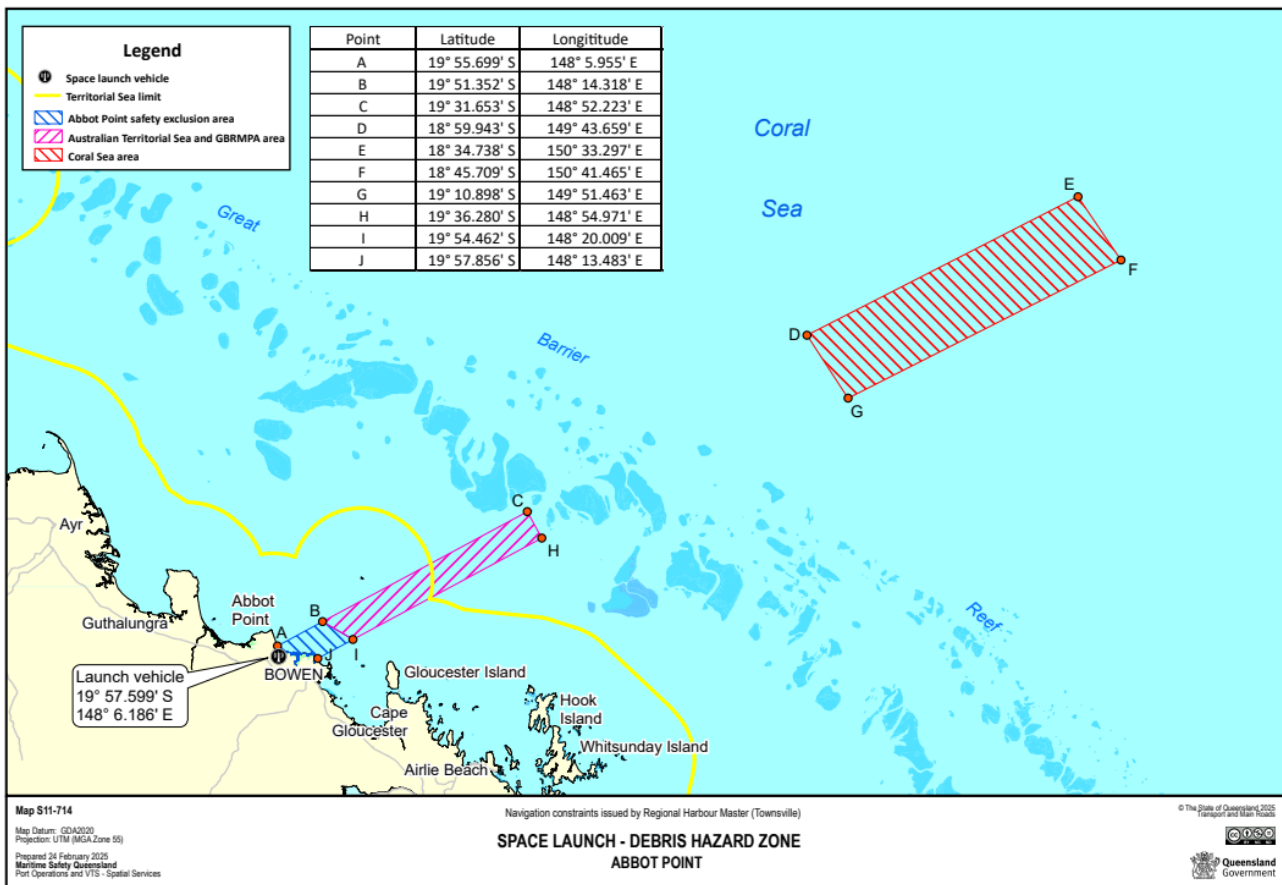


Chart temporarily affected - Aus 255 - Aus 268 - Aus 825 - Aus 826 - Aus 4602 (INT 602) - Aus 4603 (INT 603) - Aus 4604 (INT 604)

212(T)/2025 AUSTRALIA - QUEENSLAND - Bowen - Light buoy off station, light buoy unlit

Maritime Safety Queensland Notice 59(T)/2025, 69(T)/2025

The starboard lateral light buoy, *Fl.G.4s M5* (20° 02'.35 S 148° 15'.78 E), is off station.

The special light buoy, *Fl.Y.2.5s* (20° 01'.65 S 148° 15'.76 E), is unlit.

Mariners are advised to navigate with caution in the area.

Chart temporarily affected - Aus 268

213(T)/2025 AUSTRALIA - QUEENSLAND - Great Keppel Island - Scientific instrument recovered*Former Notice - 904(T)/2024 is cancelled*

Maritime Safety Queensland

Cancel this notice on receipt.

Chart formerly affected - Aus 819 - Aus 820**214(T)/2025 AUSTRALIA - QUEENSLAND - Hinchinbrook Channel - Oyster Point - Wreck**

Maritime Safety Queensland Notice 51(T)/2025

A stranded wreck marked by a special light buoy, *Fl.Y.2-5s*, exists in position 18° 16'.23 S 146° 02'.67 E.

Mariners are advised to navigate with caution in the area.

Chart temporarily affected - Aus 259**215(T)/2025 AUSTRALIA - QUEENSLAND - Johnstone River - Light buoys off station**

Maritime Safety Queensland Notice 62(T)/2025

The port lateral light buoys, *Fl.R.3s* (17° 30'.63 S 146° 03'.60 E and 17° 30'.54 S 146° 03'.79 E), are off station.

Mariners are advised to navigate with caution in the area.

Chart temporarily affected - Aus 258**216(T)/2025 AUSTRALIA - QUEENSLAND - Skardon River - Obstruction removed***Former Notice - 111(T)/2024 is cancelled*

Maritime Safety Queensland Notice 40(T)/2024

Cancel this notice on receipt.

Chart formerly affected - Aus 301**217(T)/2025 AUSTRALIA - NORTHERN TERRITORY - Darwin - Frances Bay - Obstruction removed***Former Notice - 175(T)/2025 is cancelled*

Northern Territory Government

Cancel this notice on receipt.

Chart formerly affected - Aus 25 - Aus 26**218(T)/2025 AUSTRALIA - WESTERN AUSTRALIA - Barracouta Shoal - Well plug and abandonment works eastwards**

Jadestone Energy

On or about 8 March 2025, a drill rig will be conducting well plug and abandonment works in the vicinity of position 12° 30'.08 S 124° 25'.12 E.

Mariners are advised to navigate with caution in the area.

Chart temporarily affected - Aus 314 - Aus 319 - Aus 4722 (INT 722)

219(P)/2025 AUSTRALIA - WESTERN AUSTRALIA - Bunbury - Harbour works

Department of Transport WA Notice WA859/15/2025

Works associated with the construction of a new breakwater at the entrance to Casuarina Harbour are in progress between positions 33° 18'.67 S 115° 38'.63 E and 33° 18'.48 S 115° 38'.51 E.

Mariners should navigate between the lateral light buoys in the vicinity of position 33° 18'.67 S 115° 38'.61 E to follow the change in channel position.

Mariners are advised to navigate with caution in the area.

Chart which will be affected - Aus 115**220(T)/2025 AUSTRALIA - WESTERN AUSTRALIA - Bunbury - Dredging operations***Former Notice - 652(T)/2024 is cancelled*

Department of Transport WA Notice 6360/2025

The dredge *Modi R* and support vessels *Edi* and *Amanda Verne K* are conducting dredging operations in the main shipping channel and in the outer and inner harbour of the Port of Bunbury (33° 18'.67 S 115° 39'.13 E).

Vessels will display appropriate lights and shapes and will monitor VHF Ch 12.

Mariners are advised to give these vessels a wide berth and not to approach them. They are also advised to navigate with caution in the area and are requested to pass at slow speed with minimal wash.

Chart temporarily affected - Aus 115**221(T)/2025 AUSTRALIA - WESTERN AUSTRALIA - Esperance Bay to Eastern Group - Survey operations; scientific instruments**

Revelare Hydrospatial

In relation to hydrographic survey operations, special light buoys, *Fl.Y.1-5s*, exist in an area bounded by the following positions:

34° 13'.37 S 123° 59'.24 E

34° 13'.12 S 124° 19'.17 E

33° 34'.52 S 124° 19'.37 E

33° 34'.82 S 124° 07'.20 E

33° 44'.03 S 123° 58'.84 E

33° 59'.75 S 123° 35'.86 E

34° 07'.46 S 123° 38'.96 E.

A special light buoy, *Fl.Y.1-5s*, exists in position 33° 57'.00 S 121° 49'.60 E.

Mariners are advised to navigate with caution in the area.

Chart temporarily affected - Aus 119 - Aus 762 - Aus 763 - Aus 4709 (INT 709)**222(T)/2025 AUSTRALIA - WESTERN AUSTRALIA - Eugene McDermott Shoal to Exmouth Plateau - Cable laying operations**

Gulf Agency Company (Australia)

Vessel *Ile de Brehat* is conducting cable laying operations between positions 13° 26'.46 S 124° 34'.93 E and 12° 58'.13 S 124° 26'.68 E; and in the vicinity of position 19° 53'.09 S 113° 14'.03 E.

Mariners are advised to navigate with caution in the area.

Chart temporarily affected - Aus 319 - Aus 4722 (INT 722) - Aus 4723 (INT 723)

223(T)/2025 AUSTRALIA - WESTERN AUSTRALIA - Fremantle to Esperance - Survey operations*Former Notice* - 185(T)/2025 is cancelled

Subcom , Australian Maritime Safety Authority Auscoast Warning 13/2025, Auscoast Warning 69/2025

Vessel *Ocean Surveyor* is conducting survey operations in areas bounded by the following positions:

32° 07'.64 S 111° 04'.39 E

32° 34'.98 S 115° 13'.09 E

32° 14'.96 S 115° 16'.09 E

31° 47'.54 S 111° 05'.88 E;

and

34° 45'.12 S 112° 57'.79 E

34° 42'.23 S 113° 03'.57 E

35° 31'.59 S 113° 27'.05 E

37° 45'.09 S 122° 02'.08 E

37° 49'.17 S 122° 00'.91 E

35° 35'.71 S 113° 24'.22 E.

Mariners are advised to navigate with caution in the area. 2.5M clearance requested.

Chart temporarily affected - Aus 755 - Aus 4708 (INT 708) - Aus 4709 (INT 709) - Aus 4710 (INT 710)**224(T)/2025 AUSTRALIA - WESTERN AUSTRALIA - Geraldton - Fishing Boat Harbour - Bed levelling; survey operations**

Mid West Ports Notice 6/2025

The dredge *Reliance* and an unmanned surface vessel *Uni-Mini* are conducting bed levelling and survey operations in the entrance to Fishing Boat Harbour (28° 46'.27 S 114° 35'.58 E).

The dredge will be towing a plough bar extending 10m from the stern on the vessel.

Vessels will display appropriate lights and shapes and will monitor VHF Ch 11 and Ch 16.

Mariners are advised to navigate with caution in the area.

Chart temporarily affected - Aus 81**225(T)/2025 AUSTRALIA - WESTERN AUSTRALIA - Glomar Shoal - Mooring buoys northwestwards**

Delmar Systems , Australian Maritime Safety Authority Auscoast Warning 82/2025

12 lit yellow mooring buoys, *Fl.3s*, exist within 1M radius of 19° 26'.11 S 116° 28'.49 E. 2.5M clearance requested.**Chart temporarily affected - Aus 327****226(T)/2025 AUSTRALIA - WESTERN AUSTRALIA - Muiron Islands - Wave glider operations completed northwestwards***Former Notice* - 106(T)/2025 is cancelled

Australian Maritime Safety Authority

Cancel this notice on receipt.

Chart formerly affected - Aus 328 - Aus 329 - Aus 744**227(T)/2025 AUSTRALIA - WESTERN AUSTRALIA - Muiron Islands - Drill rig northwestwards***Former Notice* - 50(T)/2025 is cancelled

Australian Maritime Safety Authority Auscoast Warning 84/2025

Drill rig *Transocean Endurance* is conducting drilling operations in position 21° 28'.48 S 113° 49'.54 E.**Chart temporarily affected - Aus 328 - Aus 329**

228(T)/2025 AUSTRALIA - WESTERN AUSTRALIA - Port Hedland - Obstruction

Pilbara Ports Authority Notice PH 6/2025

A slipped anchor and 350m of anchor chain exists in the vicinity of position 19° 48'.67 S 118° 21'.18 E.

Mariners are advised to navigate with caution in the area.

Chart temporarily affected - Aus 326

229(T)/2025 AUSTRALIA - WESTERN AUSTRALIA - Rottneest Island - Scientific instruments northwestwards

JASCO Applied Sciences (Australia)

Subsurface scientific instruments, 2m above seabed, exist in positions 31° 52'.91 S 114° 56'.07 E and 31° 52'.85 S 115° 01'.14 E.

Mariners are advised to keep a 100m radius clearance around the instruments and to navigate with caution in the area.

Chart temporarily affected - Aus 754

230(T)/2025 AUSTRALIA - SOUTH AUSTRALIA - Gibson Peninsula - Cape Bauer - Light unlit

Department for Infrastructure and Transport SA Notice 19(T)/2025

The light, *Fl(3)15s 84m 16M* (32° 43'.48 S 134° 04'.41 E), is unlit.

Mariners are advised to navigate with caution in the area.

Chart temporarily affected - Aus 341 - Aus 342 - Aus 4709 (INT 709)

231(T)/2025 AUSTRALIA - VICTORIA - Cape Otway - Artificial reef southwards

Polaris Marine

Vessels *Constructor 3* and *Leaders Creek* are conducting works to establish an artificial reef in the vicinity of position 38° 58'.08 S 143° 31'.77 E.

Mariners are advised to navigate with caution in the area and keep well clear of the works.

Chart temporarily affected - Aus 349 - Aus 487

232(T)/2025 AUSTRALIA - VICTORIA - Ninety Mile Beach - Survey operations southwards

Fugro

On or about 10 March 2025, vessel *Fugro Mariner* will be conducting geotechnical survey operations in an area bounded by the following positions:

38° 38'.94 S 147° 14'.90 E

38° 31'.16 S 147° 17'.03 E

38° 28'.41 S 147° 13'.89 E

38° 34'.85 S 147° 05'.98 E.

Mariners are advised to navigate with caution in the area.

Chart temporarily affected - Aus 357 - Aus 487

233(T)/2025 AUSTRALIA - VICTORIA - Port Phillip - Swan Island - Light beacon relit

Former Notice - 155(T)/2025 is cancelled

Parks Victoria Notice 134/2025

Cancel this notice on receipt.

Chart formerly affected - Aus 143

234(P)/2025 AUSTRALIA - VICTORIA - Port Phillip - Artificial reef

Former Notice - 156(T)/2025 is cancelled
Ports Victoria Notice 131(T)/2025

An artificial reef in the vicinity of position 37° 59'.29 S 144° 53'.88 E has been constructed.

Charts will be updated in due course.

Chart which will be affected - Aus 155**235(T)/2025 AUSTRALIA - VICTORIA - Portland - Shoaling**

Port of Portland Notice 62(T)/2025

Shoaling extends approximately 90 metres to the west of the breakwater (38° 20'.65 S 141° 37'.37 E), with a least depth of 6.7m at the channel toe line. Shoaling decreases as it extends west to a depth of 10m.

Mariners are advised to navigate with caution in the area.

Chart temporarily affected - Aus 140**236(T)/2025 AUSTRALIA - TASMANIA - D'Entrecasteaux Channel - Middleton - Wreck**

Marine and Safety Tasmania Notice M122(T)/2025

A wreck marked by a blue and yellow light buoy, *Fl. Y. 3s*, exists in position 43° 13'.82 S 147° 16'.03 E.

Mariners are advised to navigate with caution in the area.

Chart temporarily affected - Aus 173**237(T)/2025 AUSTRALIA - TASMANIA - Norfolk Bay - Little Norfolk Bay - Wreck salvaged**

Former Notice - 794(T)/2024 is cancelled
Marine and Safety Tasmania Notice M132(T)/2025

Cancel this notice on receipt.

Chart formerly affected - Aus 171**238(T)/2025 AUSTRALIA - TASMANIA - Robbins Island to Rocky Cape - Scientific instruments recovered northwards**

Former Notice - 161(T)/2025 is cancelled
Maritime and Safety Tasmania Notice M143(T)/2025

Cancel this notice on receipt.

Chart formerly affected - Aus 487 - Aus 790

II

HYDROGRAPHIC REPORTS

NIL

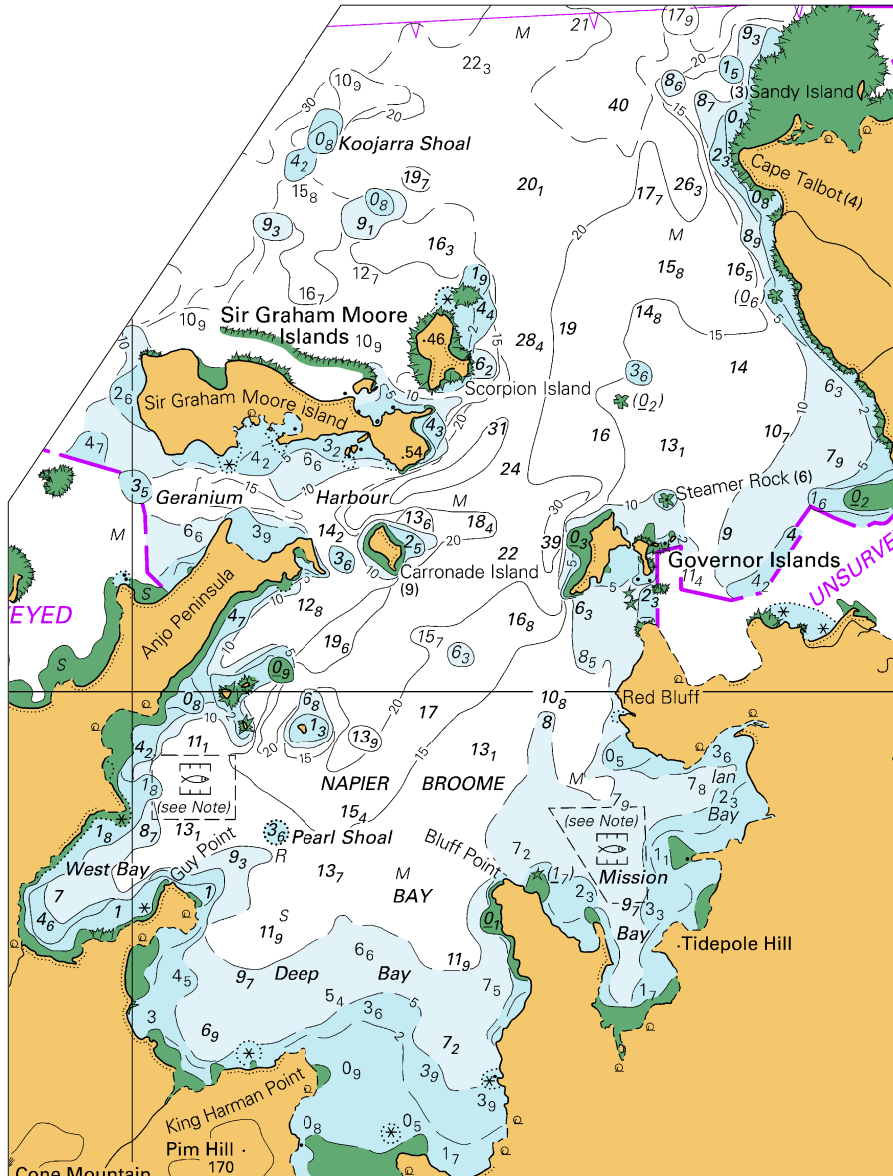
To accompany Australian Notice to Mariners 206/2025

COMPULSORY PILOTAGE

Pilotage is compulsory for all vessels with a LOA of 35 metres or greater.

Note for chart Aus 64

To accompany Australian Notice to Mariners 204/2025

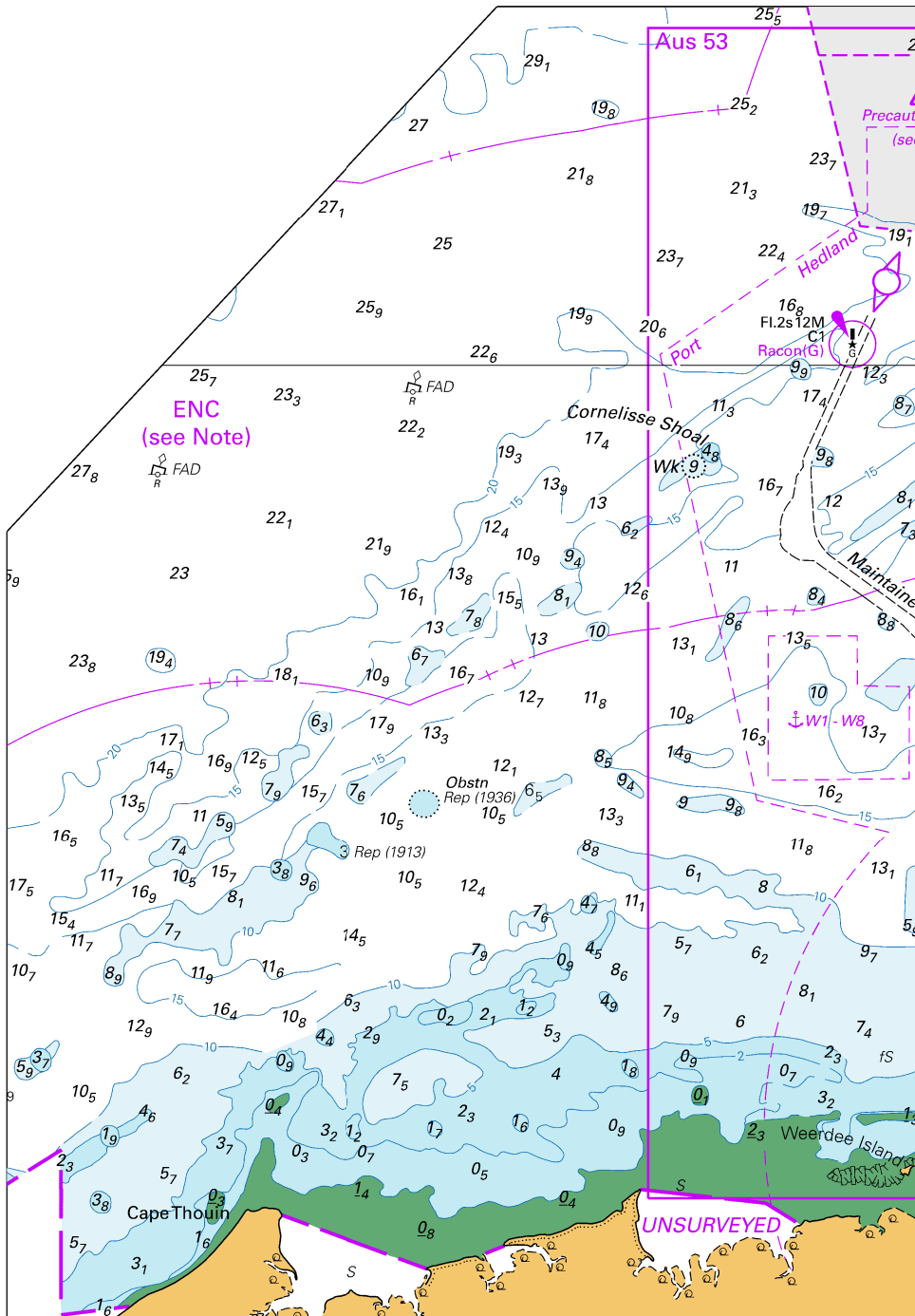


Block for chart Aus 318

© Commonwealth of Australia 2025

(74.0 x 155.0mm)
(117.9

To accompany Australian Notice to Mariners 205/2025



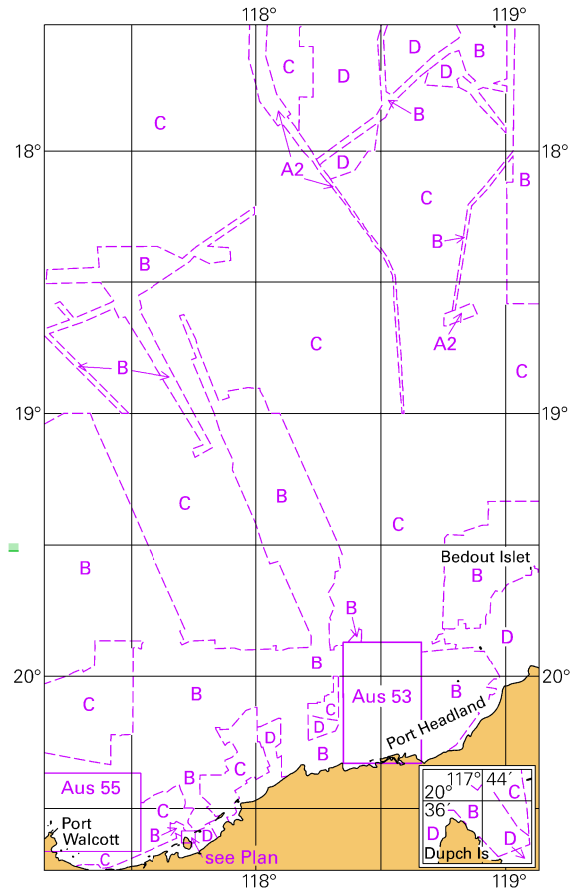
Block A for chart Aus 326

© Commonwealth of Australia 2025

(58.6
126.9 x 182.6mm)

To accompany Australian Notice to Mariners 205/2025

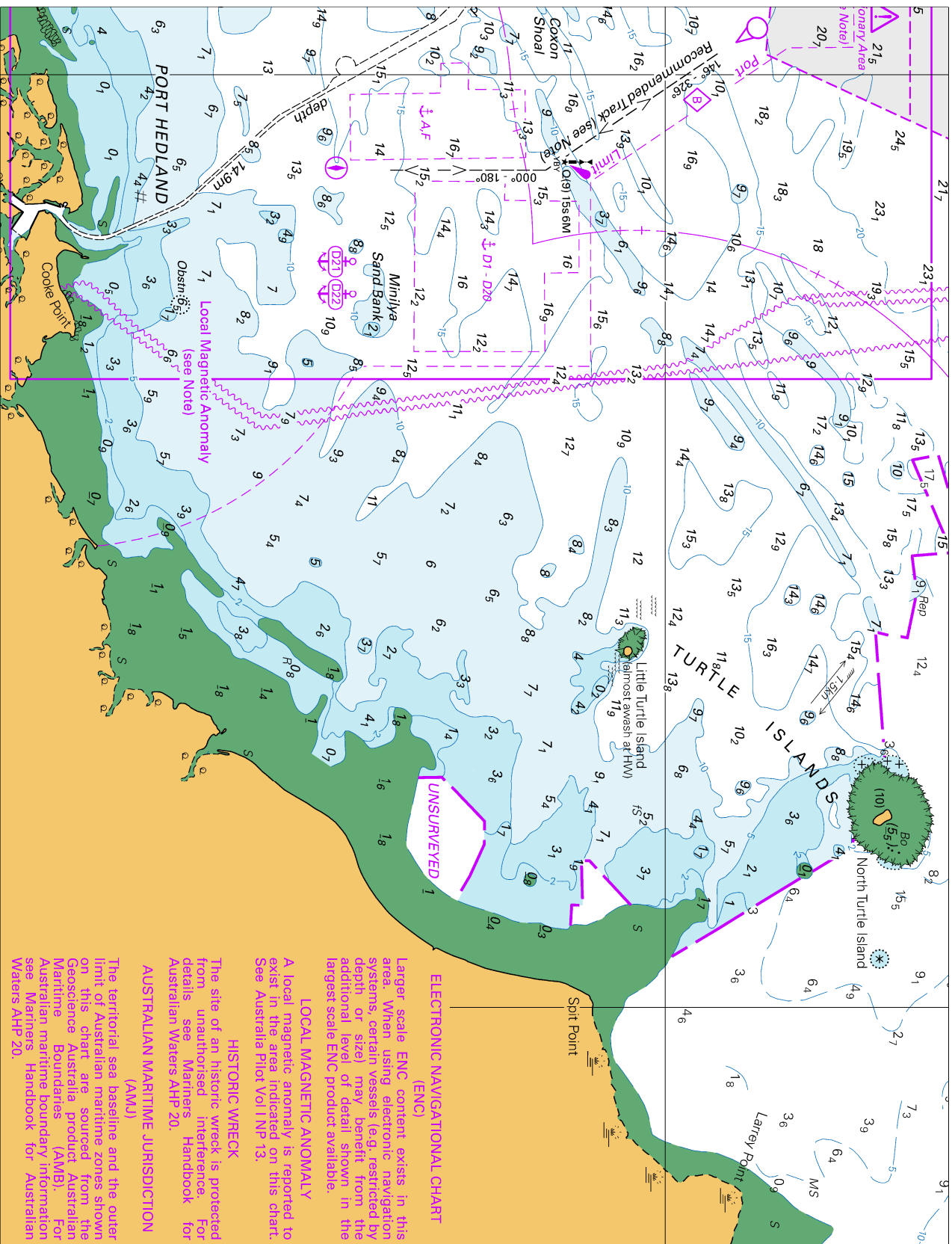
Zone of Confidence (ZOC) Diagram



Block for chart Aus 326

(65.6 x 111.9mm)

© Commonwealth of Australia 2025



ELECTRONIC NAVIGATIONAL CHART (ENC)
 Larger scale ENC content exists in this area. When using electronic navigation systems, certain vessels (e.g. restricted by depth or size) may benefit from the additional level of detail shown in the largest scale ENC product available.

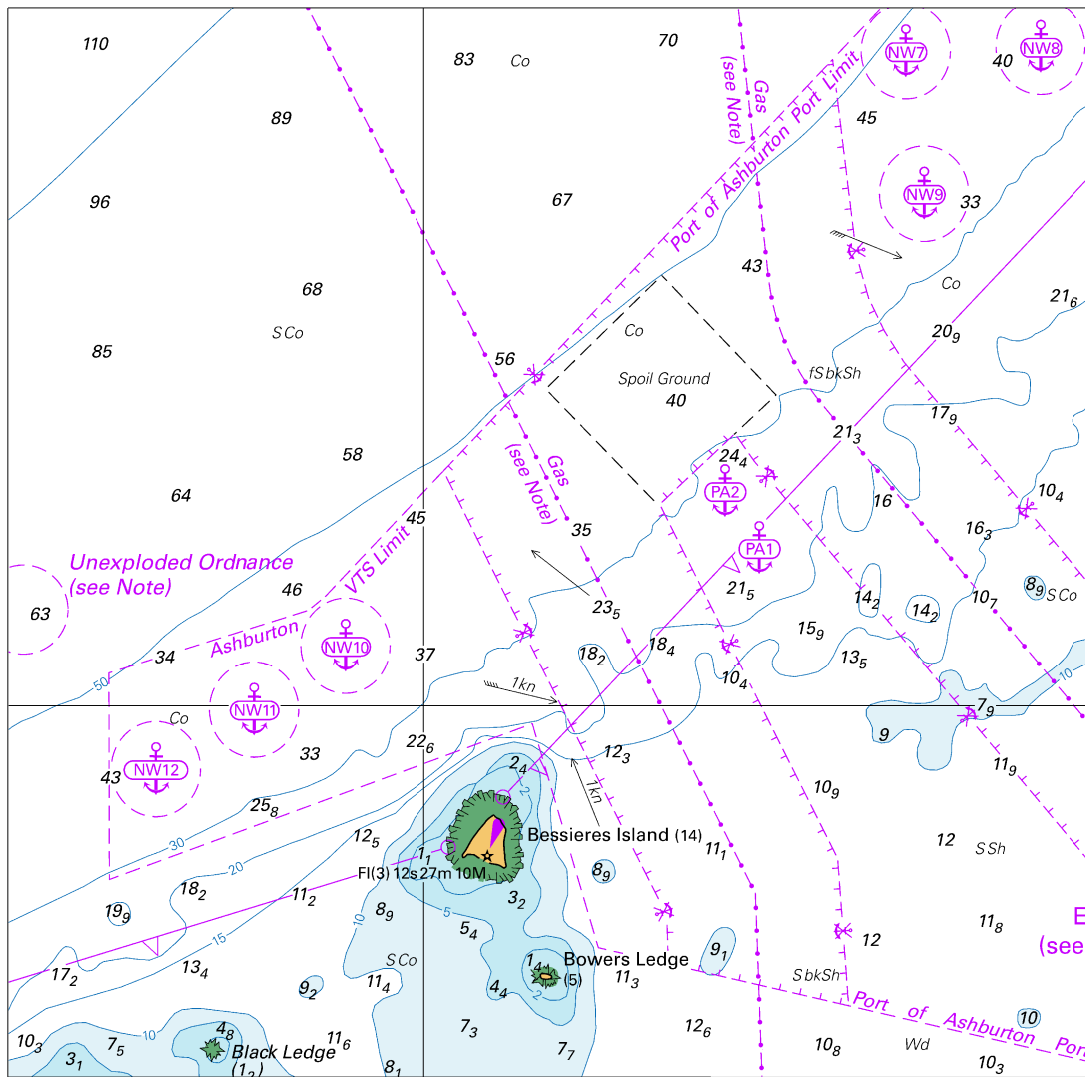
LOCAL MAGNETIC ANOMALY
 A local magnetic anomaly is reported to exist in the area indicated on this chart. See Australia Pilot Vol I NP 13.

HISTORIC WRECK
 The site of an historic wreck is protected from unauthorised interference. For details see Mariners Handbook for Australian Waters AHP 20.

AUSTRALIAN MARITIME JURISDICTION (AMJ)
 The territorial sea baseline and the outer limit of Australian maritime zones shown on this chart are sourced from the Geoscience Australia product Australian Maritime Boundaries (AMB). For Australian maritime boundary information see Mariners Handbook for Australian Waters AHP 20.

Block B for chart Aus 326

To accompany Australian Notice to Mariners 206/2025

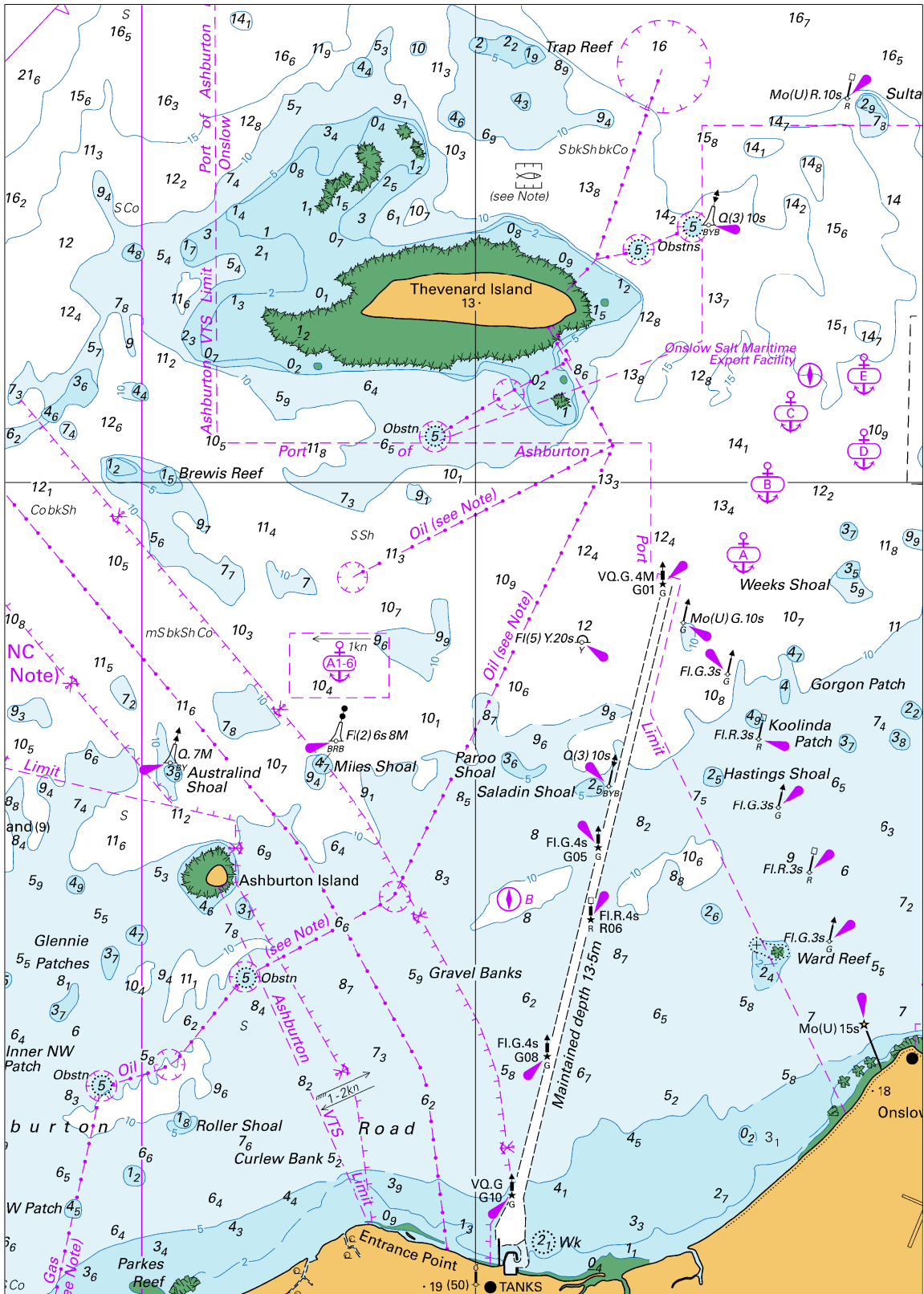


Block A for chart Aus 743

© Commonwealth of Australia 2025

(142.7 x 141.4mm)

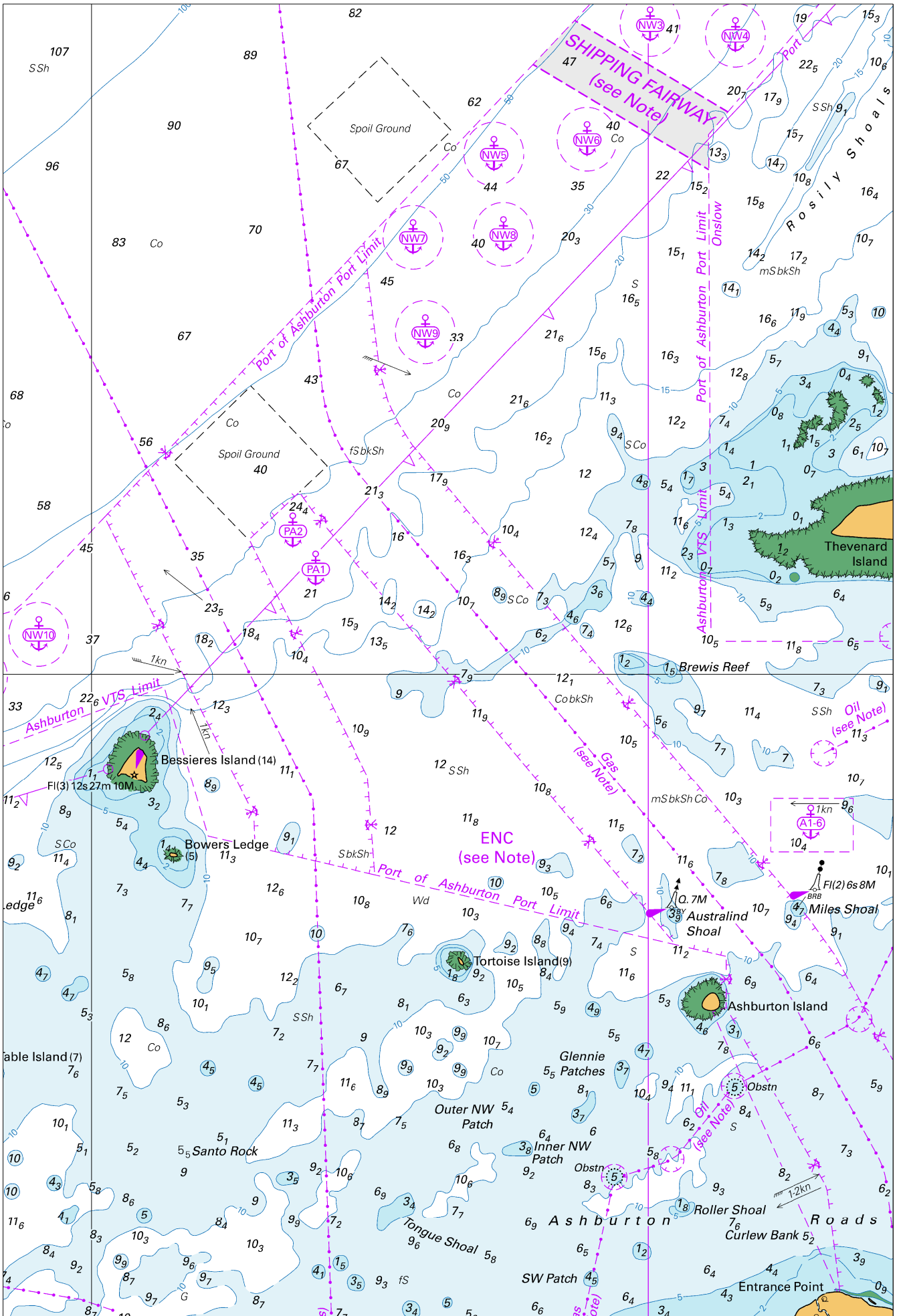
To accompany Australian Notice to Mariners 206/2025



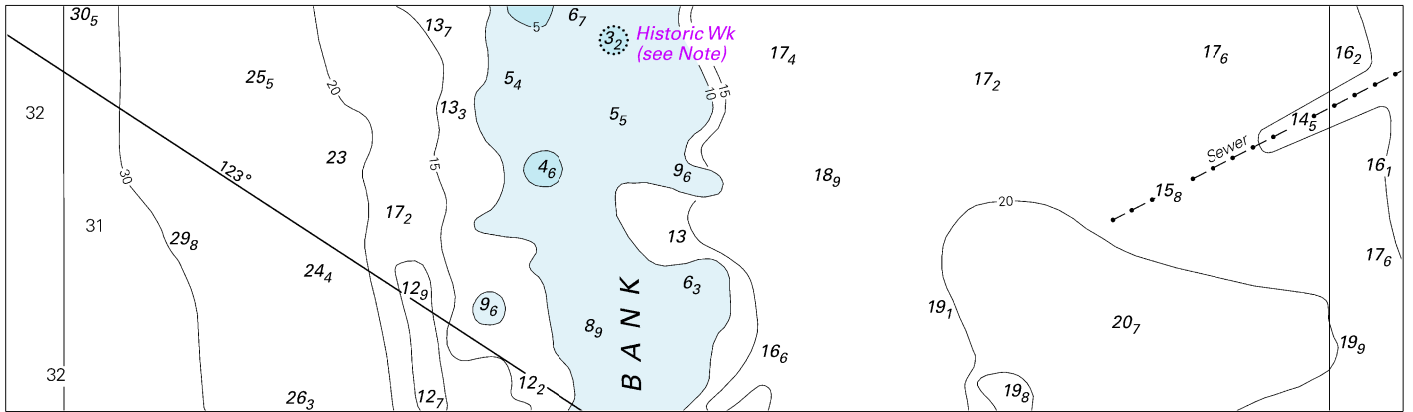
Block B for chart Aus 743

© Commonwealth of Australia 2025

(151.2 x 212.8mm)



To accompany Australian Notice to Mariners 207/2025

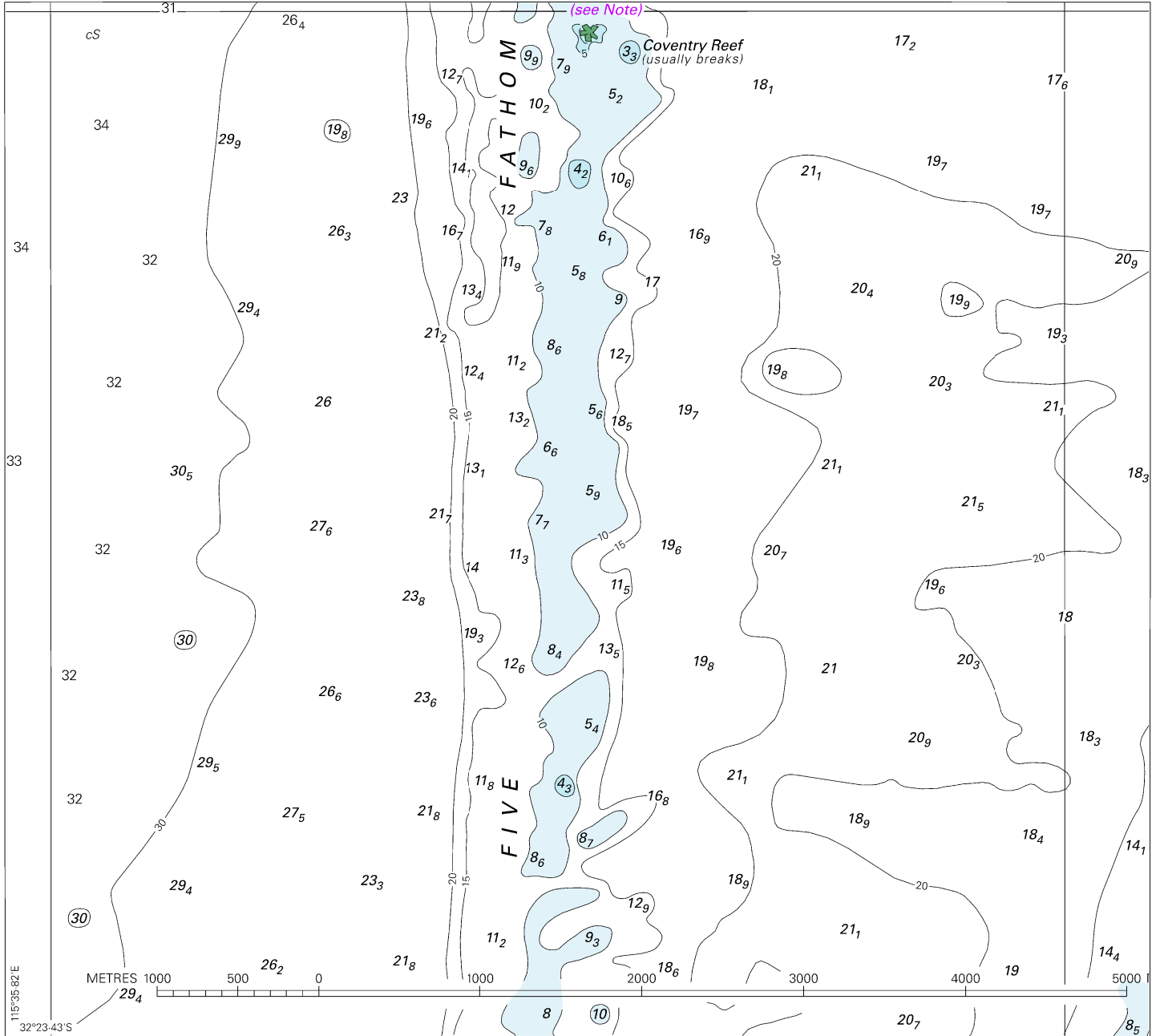


Block A for chart Aus 116

© Commonwealth of Australia 2025

(184.8 x 53.6mm)

To accompany Australian Notice to Mariners 207/2025

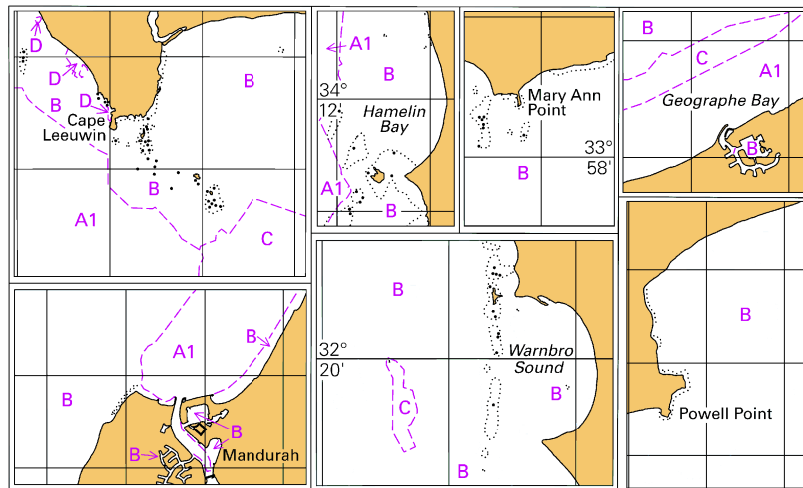


Block B for chart Aus 116

© Commonwealth of Australia 2025

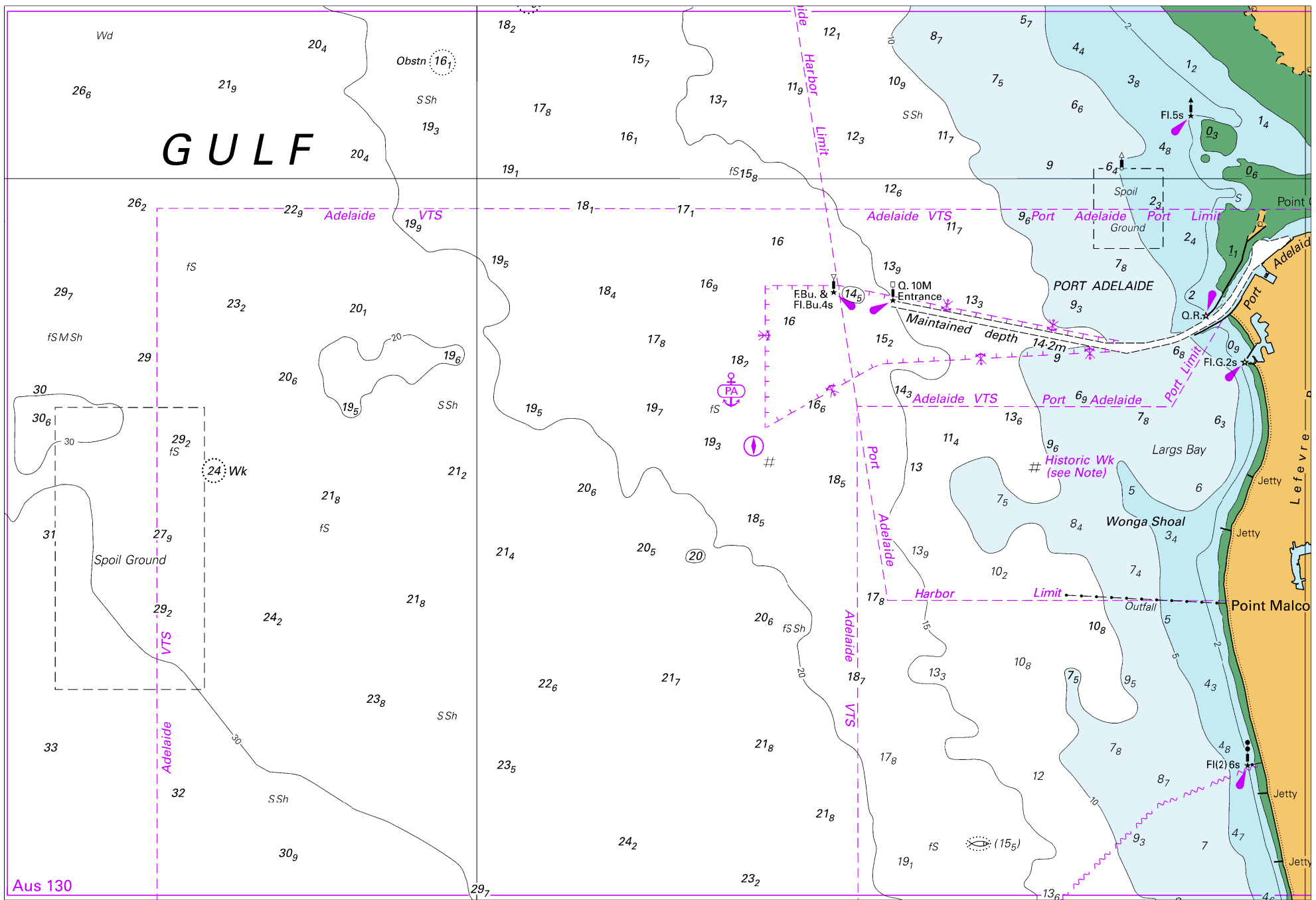
(189.0 x 170.6mm)

To accompany Australian Notice to Mariners 207/2025



Block for chart Aus 116 © Commonwealth of Australia 2025

(107.0 x 64.8mm)



Aus 130