



21 February 2025

Edition 4

AUSTRALIAN NOTICES TO MARINERS

Notices 162 - 198

Published fortnightly by the Australian Hydrographic Office



Australian Notices to Mariners are the authority for correcting charts and publications published by the Australian Hydrographic Office covering Australia, Papua New Guinea, Solomon Islands, Australian Antarctic Territory and Timor-Leste.

Commodore R.L. PHILLIPS RAN
Hydrographer of Australia

SECTIONS.

- I. **Australian Notices to Mariners, including blocks and notes.**
- II. **Hydrographic Reports.**

SUPPLEMENTS.

- I. **Tracings**
 - II. **Cumulative List of Australian Notices to Mariners.**
 - III. **Cumulative List of Temporary and Preliminary Australian Notices to Mariners.**
 - IV. **Temporary and Preliminary Notices in force.**
-
-

© Commonwealth of Australia 2025

This work is copyright. Apart from any use permitted under the Copyright Act 1968, no part may be reproduced by any process, adapted, communicated or commercially exploited without prior written permission from The Commonwealth represented by the Australian Hydrographic Office.

IMPORTANT NOTICE

This edition of Notices to Mariners includes all significant information affecting AHO products which the AHO has become aware of since the last edition. All reasonable efforts have been made to ensure the accuracy and completeness of the information, including third party information, on which these updates are based. The AHO regards third parties from which it receives information as reliable, however the AHO cannot verify all such information and errors may therefore exist. The AHO does not accept liability for errors in third party information.

GENERAL INSTRUCTIONS

The substance of these notices should be inserted on the charts affected.

Bearings are referred to the true compass and are reckoned clockwise from North; those relating to lights are given as seen by an observer from seaward.

Positions quoted in notices relate to WGS84 which is the horizontal datum for all charts produced by the Australian Hydrographic Office.

The range quoted for a light is its nominal range.

Depths are with reference to the chart datum of each chart. Heights are above mean high water springs or mean higher high water, as appropriate.

The capital letter (P) or (T) after the number of any notice denotes a preliminary or temporary notice respectively, which are contained separately at the end of the permanent notices.

REPORTING OF DANGERS

Mariners are particularly requested to notify the AUSTRALIAN HYDROGRAPHIC OFFICE, Locked Bag 8801 Wollongong, NSW 2500 (e-mail datacentre@hydro.gov.au or, alternatively by filling in and submitting the [Hydrographic Notes](#) forms located on the web site – www.hydro.gov.au), immediately on the discovery of new dangers or suspected dangers to navigation. For changes or defects in aids to navigation notify AusSAR (Fax 02-6230 6868 or email rccaus@amsa.gov.au).

AUTHORISED USE

Copies of Australian notices are available free of charge from the Australian Hydrographic Office (AHO) website (www.hydro.gov.au) and through the eNotices (email) service (www.hydro.gov.au/enotices/enotices.htm).

Individual Notices may be copied for the purpose of inserting Notice substance on official charts and publications. Paper copies may be printed by chart agents and distributed to customers on a cost recovery basis. Participating chart agents are listed on the AHO website as providing a 'Paper Notices to Mariners' service (www.hydro.gov.au/prodserv/agents-list.htm). Copies of the notices may not be sold for profit without prior written agreement.

NUMERICAL INDEX OF NOTICES TO MARINERS

Edition No 4

Notices	Aus Chart, INT Chart, ENC Cell, AHP, BA Pubs
162	Aus 53
163	Aus 130
164	Aus 252
165	Aus 299
166	Aus 719
167	Aus 311, 4603, INT 603
168	Aus 4722, INT 722
169	Aus 81
170	Aus 780
171	Aus 155
172(T)	Aus 245, 246
173(T)	Aus 252
174(T)	PNG 378, 502
175(T)	Aus 25, 26
176(T)	Aus 312
177(T)	Aus 117
178(T)	Aus 57
179(P)	Aus 57
180(T)	Aus 319
181(T)	Aus 744, 745
182(T)	Aus 329, 744
183(T)	Aus 4723, INT 723
184(T)	Aus 117
185(T)	Aus 755, 4708, 4709, 4710, INT 708, 709, 710
186(T)	Aus 319, 320
187(T)	Aus 64
188(T)	Aus 754
189(T)	Aus 112
190(T)	Aus 776, 777
191(T)	Aus 357, 487, 802
192(T)	Aus 357
193(T)	Aus 357, 487
194(T)	Aus 349
195(T)	Aus 143, 155, 157
196(P)	Aus 143
197(T)	Aus 155
198(T)	Aus 766, 797

NUMERICAL INDEX OF CHARTS AFFECTED

Edition No 4

Aus Chart	Notices
Aus 25	175(T)
Aus 26	175(T)
Aus 53	162
Aus 57	178(T), 179(P)
Aus 64	187(T)
Aus 81	169
Aus 112	189(T)
Aus 117	177(T), 184(T)
Aus 130	163
Aus 143	195(T), 196(P)
Aus 155	171, 195(T), 197(T)
Aus 157	195(T)
Aus 245	172(T)
Aus 246	172(T)
Aus 252	164, 173(T)
Aus 299	165
Aus 311	167
Aus 312	176(T)
Aus 319	180(T), 186(T)
Aus 320	186(T)
Aus 329	182(T)
Aus 349	194(T)
Aus 357	191(T), 192(T), 193(T)
Aus 487	191(T), 193(T)
Aus 719	166
Aus 744	181(T), 182(T)
Aus 745	181(T)
Aus 754	188(T)
Aus 755	185(T)
Aus 766	198(T)
Aus 776	190(T)
Aus 777	190(T)
Aus 780	170
Aus 797	198(T)
Aus 802	191(T)
Aus 4603	167
Aus 4708	185(T)
Aus 4709	185(T)
Aus 4710	185(T)
Aus 4722	168
Aus 4723	183(T)
PNG 378	174(T)
PNG 502	174(T)

INT Chart	Notices
INT 723	183(T)

INT Chart	Notices
INT 603	167
INT 708	185(T)
INT 709	185(T)
INT 710	185(T)
INT 722	168

162 AUSTRALIA - Products - New Charts, New Editions, Withdrawn Charts

Australian Hydrographic Office

New Charts

Chart	Title and Geographical limits	Scale	Publication Date	Remarks
NIL				

New Electronic Navigation Chart (Aus ENC)

Cell Name	Title	Publication Date	Remarks
NIL			

New Editions and Withdrawn Charts

Chart	Title	Scale	Publication Date	Remarks
Aus 53 (Edition 9)	Australia - North West Coast - Western Australia - Approaches to Port Hedland	1:50 000	21/2/2025	New edition with general updating throughout; including new bathymetric data. Chart Aus 53 Edition 8 dated 29 October 2021 is now superseded and must be withdrawn from use.

Chart permanently withdrawn

Charts listed above as withdrawn no longer meet chart carriage requirements and should be marked as "superseded" and replaced with the new chart/ new edition listed prior to passage through the area covered by the new chart.

When placing orders with a chart agent between notice of forthcoming edition and its publication, mariners should advise whether their order pertains to the current edition or the new edition.

For further details refer to the AHO website at www.hydro.gov.au for new edition and new chart stock arrival information.

163 AUSTRALIA - Products - New Charts and New Editions to be published shortly

Australian Hydrographic Office

New Charts to be published shortly

Chart	Title	Scale	Remarks
NIL			

New Editions to be published shortly

Chart	Title	Scale	Remarks
Aus 130	Australia - South Coast - South Australia - Approaches to Port Adelaide	1:37 500	New edition with general updating throughout; including latest bathymetric data.

164 AUSTRALIA - QUEENSLAND - Laguna Quays - Lights

Maritime Safety Queensland

Aus 252 [97/2024]

Amend	light to Q.R	20° 36'.2 S	148° 41'.0 E
-------	--------------	-------------	--------------

Aus 252 (Laguna Quays) [97/2024]

Amend	light to VQ.R No8	20° 36'.15 S	148° 40'.99 E
	light to Q.R No10	20° 36'.23 S	148° 41'.02 E

165 AUSTRALIA - TORRES STRAIT - Thursday Island - Port Kennedy - Anchorage

Maritime Safety Queensland Notice 600/2024

Aus 299 [11/2025]

Insert	285m radius swinging circle, centred on	10° 35'.408 S	142° 13'.440 E
--------	---	---------------	----------------

166 AUSTRALIA - ARAFURA SEA - Hogmanay Shoal - Wreck

Australian Hydrographic Office

Aus 719 [798/2023]

Insert	safe clearance depth, 32m, enclosed by danger circle with legend, <i>Wk</i>	11° 04'.33 S	133° 17'.08 E
--------	---	--------------	---------------

167 AUSTRALIA - TIMOR SEA - The Boxers - Depths northwestwards

Australian Hydrographic Office

Aus 311 [895/2024]

Insert	depth, 36m, enclosed by contour	11° 07'.99 S	127° 58'.16 E
	depth, 29 _g m, enclosed by contour	11° 10'.93 S	127° 53'.66 E

Aus 4603 (INT 603) [895/2024]

Insert	depth, 29 _g m, enclosed by contour	11° 10'.9 S	127° 53'.7 E
--------	---	-------------	--------------

168 INDONESIA - Flores - Tanjung Boba - Light

UKHO Notice 8/923/2025

Aus 4722 (INT 722) [130/2025]

Insert	light, <i>Fl.12M</i>	8° 53'.3 S	120° 46'.3 E
--------	----------------------	------------	--------------

169 AUSTRALIA - WESTERN AUSTRALIA - Geraldton - Jetty; nav aids

Department of Transport WA Notice WA939/34/2025

Aus 81 (Geraldton) [15/2025]

Insert	continuous line, between	28° 46'.517 S	114° 36'.203 E
		28° 46'.490 S	114° 36'.203 E
	light, <i>Fl. Y. 5s</i>	28° 46'.490 S	114° 36'.203 E

Replace	beacon, 2Bns with light, <i>2Fl. Bu</i> , and triangular daymark apex down	28° 46'.50 S	114° 36'.17 E
---------	--	--------------	---------------

170 AUSTRALIA - SOUTH AUSTRALIA - Kangaroo Island - Kingscote - Depths; light beacon*Former Notice - 657(P)/2024 is cancelled*

Department for Infrastructure and Transport SA Notice 17(T)/2025, Hydro Survey

Aus 780 [93/2025]

Insert	accompanying block	35° 41'.5 S	137° 35'.0 E
--------	------------------------------------	-------------	--------------

171 AUSTRALIA - VICTORIA - Point Gellibrand - Buoy

Parks Victoria Notice 98/2025

Aus 155 [94/2025]

Replace	beacon with special cylindrical buoy with topmark	37° 52'.17 S	144° 53'.54 E
---------	---	--------------	---------------

172(T)/2025 AUSTRALIA - QUEENSLAND - Gladstone - South Trees Point - Scientific instruments recovered

Former Notice - 678(T)/2024 is cancelled
Maritime Safety Queensland Notice 017(T)/2025

Cancel this notice on receipt.

Chart formerly affected - Aus 245 - Aus 246**173(T)/2025 AUSTRALIA - QUEENSLAND - Laguna Quays - Lights unlit**

Maritime Safety Queensland

The leading lights, *F.Bu (F Day)* (20° 36'.19 S 148° 40'.80 E) and *F.Bu (F Day)* (20° 36'.16 S 148° 40'.86 E), are unlit.

Chart temporarily affected - Aus 252**174(T)/2025 PAPUA NEW GUINEA - Gulf of Papua - Geotechnical survey operations completed**

Former Notice - 908(T)/2024 is cancelled
National Maritime Safety Authority PNG

Cancel this notice on receipt.

Chart formerly affected - PNG 378 - PNG 502**175(T)/2025 AUSTRALIA - NORTHERN TERRITORY - Darwin - Frances Bay - Obstruction**

Northern Territory Government Notice 9(T)/2025

A semi-submerged mooring buoy exists in position 12° 28'.50 S 130° 52'.12 E.

Chart temporarily affected - Aus 25 - Aus 26**176(T)/2025 AUSTRALIA - TIMOR SEA - Sahul Banks - Subsea operations completed southwards**

Former Notice - 713(T)/2024 is cancelled
Australian Maritime Safety Authority , Sapura Energy Australia

Cancel this notice on receipt.

Chart formerly affected - Aus 312**177(T)/2025 AUSTRALIA - WESTERN AUSTRALIA - Cockburn Sound - Kwinana - Scientific instruments recovered**

Former Notice - 1063(T)/2023 is cancelled
Fremantle Ports

Cancel this notice on receipt.

Chart formerly affected - Aus 117**178(T)/2025 AUSTRALIA - WESTERN AUSTRALIA - Dampier - Mermaid Sound - Scientific instrument recovered; exclusion zone removed**

Former Notice - 534(T)/2024 is cancelled
Pilbara Ports Authority Notice D15(T)/2024

Cancel this notice on receipt.

Chart formerly affected - Aus 57

179(P)/2025 AUSTRALIA - WESTERN AUSTRALIA - Dampier - West Lewis Island - Obstruction
Go Offshore

An obstruction on the sea floor has been reported in the vicinity of position 20° 36'.27 S 116° 35'.13 E.

Mariners should navigate with caution in the area.

Chart which will be affected - Aus 57

180(T)/2025 AUSTRALIA - WESTERN AUSTRALIA - Eugene McDermott Shoal - Drill rig northwestwards
Former Notice - 255(T)/2024 is cancelled
Australian Maritime Safety Authority

Cancel this notice on receipt.

Chart formerly affected - Aus 319

181(T)/2025 AUSTRALIA - WESTERN AUSTRALIA - Exmouth - Scientific instruments
Former Notice - 46(T)/2025 is cancelled
Department of Transport WA Notice 6268/2024

Scientific instruments, 5m below the surface, exist in the following positions:

21° 55'.56 S 114° 08'.88 E

21° 57'.66 S 114° 08'.82 E

21° 58'.02 S 114° 08'.76 E

21° 59'.04 S 114° 08'.46 E.

Mariners are advised to navigate with caution in the area.

Chart temporarily affected - Aus 744 - Aus 745

182(T)/2025 AUSTRALIA - WESTERN AUSTRALIA - Exmouth Gulf - Scientific instrument recovered
Former Notice - 258(T)/2024 is cancelled
JASCO Applied Sciences (Australia)

Cancel this notice on receipt.

Chart formerly affected - Aus 329 - Aus 744

183(T)/2025 AUSTRALIA - WESTERN AUSTRALIA - Exmouth Plateau - Drilling operations completed
Former Notice - 719(T)/2024 is cancelled
Australian Maritime Safety Authority

Cancel this notice on receipt.

Chart formerly affected - Aus 4723 (INT 723)

184(T)/2025 AUSTRALIA - WESTERN AUSTRALIA - Fremantle - Owen Anchorage - Scientific instruments recovered
Former Notice - 72(T)/2024 is cancelled
Fremantle Ports

Cancel this notice on receipt.

Chart formerly affected - Aus 117

185(T)/2025 AUSTRALIA - WESTERN AUSTRALIA - Fremantle to Esperance - Survey operations

Former Notice - 58(T)/2025 is cancelled

Subcom , Australian Maritime Safety Authority Auscoast Warning 13/2025

Vessel *Ocean Surveyor* is conducting survey operations in areas bounded by the following positions:

32° 07'.64 S 111° 04'.39 E
 32° 34'.98 S 115° 13'.09 E
 32° 14'.96 S 115° 16'.09 E
 31° 47'.54 S 111° 05'.88 E;
 and
 34° 45'.12 S 112° 57'.79 E
 34° 42'.23 S 113° 03'.57 E
 35° 31'.59 S 113° 27'.05 E
 37° 31'.95 S 122° 01'.57 E
 37° 37'.22 S 122° 00'.36 E
 35° 35'.71 S 113° 24'.22 E.

Mariners are advised to navigate with caution in the area. 2.5M clearance requested.

Chart temporarily affected - Aus 755 - Aus 4708 (INT 708) - Aus 4709 (INT 709) - Aus 4710 (INT 710)

186(T)/2025 AUSTRALIA - WESTERN AUSTRALIA - Heywood Shoal - Pipe laying operations; survey operations

Allseas Marine Contractors Australia

Vessels *Audacia* and *Fortitude* are conducting survey and pipe laying operations between the following positions:

13° 46'.88 S 123° 18'.97 E
 13° 13'.18 S 123° 56'.52 E
 12° 57'.87 S 124° 26'.55 E.

Mariners are advised to navigate with caution in the area.

Chart temporarily affected - Aus 319 - Aus 320

187(T)/2025 AUSTRALIA - WESTERN AUSTRALIA - Onslow - Beadon Creek - Light buoy off station

Department of Transport WA Notice 6347/2025

The port lateral light buoy, *Fl.R.3s No4* (21° 37'.59 S 115° 07'.78 E), is off station.

Mariners are advised to navigate with caution in the area.

Chart temporarily affected - Aus 64

188(T)/2025 AUSTRALIA - WESTERN AUSTRALIA - Rottnest Island - Light buoy off station westwards

Former Notice - 56(T)/2025 is cancelled

Curtin University

Cancel this notice on receipt.

Chart formerly affected - Aus 754

189(T)/2025 AUSTRALIA - WESTERN AUSTRALIA - Trigg Island - Scientific instruments recovered

Former Notice - 509(T)/2022 is cancelled

Department of Transport WA Notice 66/2020

Cancel this notice on receipt.

Chart formerly affected - Aus 112

190(T)/2025 AUSTRALIA - SOUTH AUSTRALIA - Spencer Gulf - Louth Bay to Arno Bay - Scientific instruments recovered

Former Notice - 42(T)/2023 is cancelled
Department for Infrastructure and Transport SA

Cancel this notice on receipt.

Chart formerly affected - Aus 776 - Aus 777

191(T)/2025 AUSTRALIA - VICTORIA - Ninety Mile Beach - Survey operations southwards
Orsted

On or about 2 March 2025, MV *Offshore Solution* will be conducting a geotechnical survey in areas bounded by the following positions:

39° 08'.10 S 147° 51'.23 E
39° 01'.68 S 147° 28'.34 E
39° 06'.90 S 147° 09'.53 E
39° 22'.91 S 147° 33'.25 E;
and
38° 27'.98 S 147° 05'.34 E
38° 32'.28 S 147° 04'.87 E
38° 30'.04 S 147° 07'.57 E
38° 25'.64 S 147° 08'.39 E.

Mariners are advised to navigate with caution in the area. 500m clearance requested.

Chart temporarily affected - Aus 357 - Aus 487 - Aus 802

192(T)/2025 AUSTRALIA - VICTORIA - Ninety Mile Beach - Scientific instrument recovered eastwards

Former Notice - 126(T)/2024 is cancelled
Esso Australia Pty Ltd

Cancel this notice on receipt.

Chart formerly affected - Aus 357

193(T)/2025 AUSTRALIA - VICTORIA - Ninety Mile Beach - Scientific instruments southwards
RPS Group

Special light buoys, Q(5)Y.20s, exist in positions 38° 33'.75 S 147° 12'.49 E and 38° 38'.63 S 147° 14'.62 E.

Chart temporarily affected - Aus 357 - Aus 487

194(T)/2025 AUSTRALIA - VICTORIA - Port Campbell - Subsea operations southwards
Woodside Energy Ltd

On or about 1 March 2025, vessels *Siem Aquamarine* and *Siem Emerald* will be conducting mooring pre-lay and tether deployment activities in positions 38° 42'.11 S 142° 57'.29 E and 38° 43'.12 S 142° 57'.73 E.

Mariners are advised to navigate with caution in the area. 500m clearance requested.

Chart temporarily affected - Aus 349

195(T)/2025 AUSTRALIA - VICTORIA - Port Phillip - Drilling operations completed

Former Notice - 128(T)/2024 is cancelled
Ports Victoria Notice 48(T)/2024

Cancel this notice on receipt.

Chart formerly affected - Aus 143 - Aus 155 - Aus 157

196(P)/2025 AUSTRALIA - VICTORIA - Port Phillip - Wreck
Ports Victoria

Latest survey indicates a wreck, with least depth *21.5m*, exists in position 38° 08'.09 S 144° 56'.58 E.

Charts will be updated in due course.

Chart which will be affected - Aus 143

197(T)/2025 AUSTRALIA - VICTORIA - Port Phillip - Elwood - Light buoy restored
Former Notice - 157(T)/2025 is cancelled
Parks Victoria Notice 86/2025

Cancel this notice on receipt.

Chart formerly affected - Aus 155

198(T)/2025 AUSTRALIA - TASMANIA - Maria Island - Scientific instrument
Maritime and Safety Tasmania Notice M114(T)/2025

A special light buoy, Q.Y, exists in position 42° 35'.80 S 148° 14'.00 E.

Mariners are advised to navigate with caution in the area.

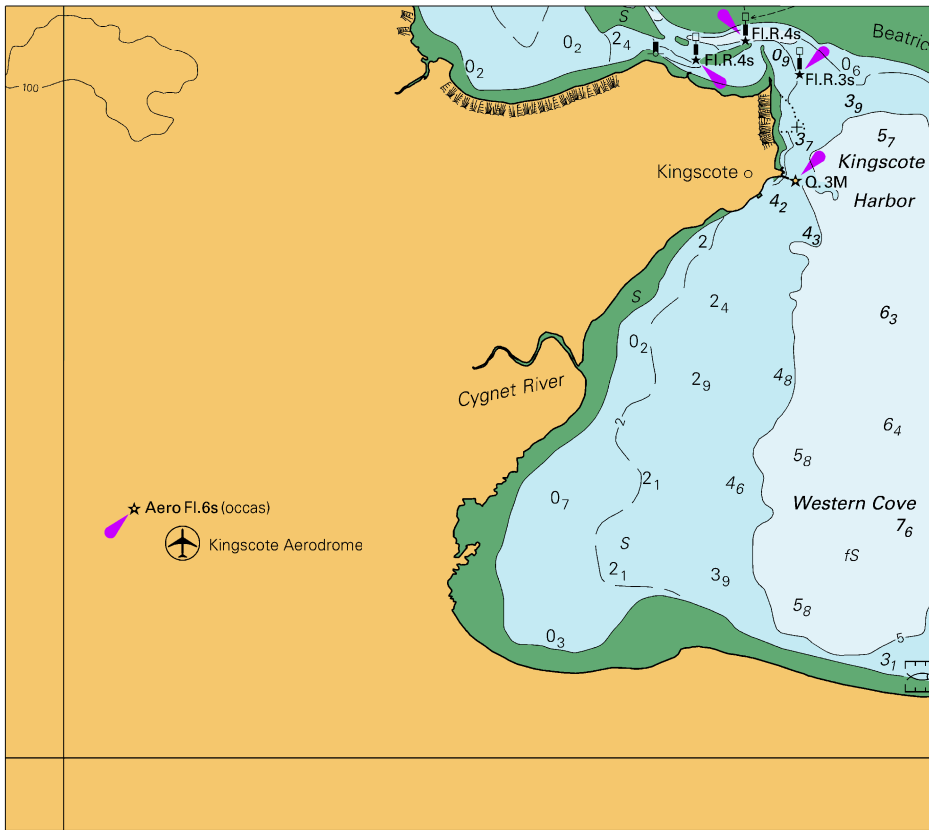
Chart temporarily affected - Aus 766 - Aus 797

II

HYDROGRAPHIC REPORTS

NIL

To accompany Australian Notice to Mariners 170/2025



Block for chart Aus 780

© Commonwealth of Australia 2025

(122.1 x 109.0mm)