



AUSTRALIAN NOTICES TO MARINERS

Notices 1 - 75

**Including
List of Temporary and Preliminary Notices in force**

Published fortnightly by the Australian Hydrographic Office



Australian Notices to Mariners are the authority for correcting charts and publications published by the Australian Hydrographic Office covering Australia, Papua New Guinea, Solomon Islands, Australian Antarctic Territory and Timor-Leste.

Commodore R.L. PHILLIPS RAN
Hydrographer of Australia

SECTIONS.

- I. **Australian Notices to Mariners, including blocks and notes.**
- II. **Hydrographic Reports.**

SUPPLEMENTS.

- I. **Tracings**
 - II. **Cumulative List of Australian Notices to Mariners.**
 - III. **Cumulative List of Temporary and Preliminary Australian Notices to Mariners.**
 - IV. **Temporary and Preliminary Notices in force.**
-
-

© Commonwealth of Australia 2025

This work is copyright. Apart from any use permitted under the Copyright Act 1968, no part may be reproduced by any process, adapted, communicated or commercially exploited without prior written permission from The Commonwealth represented by the Australian Hydrographic Office.

IMPORTANT NOTICE

This edition of Notices to Mariners includes all significant information affecting AHO products which the AHO has become aware of since the last edition. All reasonable efforts have been made to ensure the accuracy and completeness of the information, including third party information, on which these updates are based. The AHO regards third parties from which it receives information as reliable, however the AHO cannot verify all such information and errors may therefore exist. The AHO does not accept liability for errors in third party information.

GENERAL INSTRUCTIONS

The substance of these notices should be inserted on the charts affected.

Bearings are referred to the true compass and are reckoned clockwise from North; those relating to lights are given as seen by an observer from seaward.

Positions quoted in notices relate to WGS84 which is the horizontal datum for all charts produced by the Australian Hydrographic Office.

The range quoted for a light is its nominal range.

Depths are with reference to the chart datum of each chart. Heights are above mean high water springs or mean higher high water, as appropriate.

The capital letter (P) or (T) after the number of any notice denotes a preliminary or temporary notice respectively, which are contained separately at the end of the permanent notices.

REPORTING OF DANGERS

Mariners are particularly requested to notify the AUSTRALIAN HYDROGRAPHIC OFFICE, Locked Bag 8801 Wollongong, NSW 2500 (e-mail datapcentre@hydro.gov.au or, alternatively by filling in and submitting the [Hydrographic Notes](#) forms located on the web site – www.hydro.gov.au), immediately on the discovery of new dangers or suspected dangers to navigation. For changes or defects in aids to navigation notify AusSAR (Fax 02-6230 6868 or email rccaus@amsa.gov.au).

AUTHORISED USE

Copies of Australian notices are available free of charge from the Australian Hydrographic Office (AHO) website (www.hydro.gov.au) and through the eNotices (email) service (www.hydro.gov.au/enotices/enotices.htm).

Individual Notices may be copied for the purpose of inserting Notice substance on official charts and publications. Paper copies may be printed by chart agents and distributed to customers on a cost recovery basis. Participating chart agents are listed on the AHO website as providing a 'Paper Notices to Mariners' service (www.hydro.gov.au/prodserv/agents-list.htm). Copies of the notices may not be sold for profit without prior written agreement.

NUMERICAL INDEX OF NOTICES TO MARINERS

Edition No 1

Notices	Aus Chart, INT Chart, ENC Cell, AHP, BA Pubs
1	Products - New Charts, New Editions, Withdrawn Charts
2	Aus 256, 727
3	Aus 807
4	Aus 489, 809
5	Aus 815
6	Aus 237
7	Aus 817, 818
8	Aus 246
9	Aus 256, 827
10	Aus 293, 299
11	Aus 299
12	Aus 316
13	Aus 37, 320, 729, 730
14	Aus 117
15	Aus 81
16	Aus 40, 41
17	Aus 329, 744
18	Aus 136, 485, 778
19	Aus 143, 155
20	Aus 143, 155, 157
21(T)	Aus 237
22(T)	Aus 242
23(T)	Aus 827
24(T)	Aus 245, 246
25(T)	Aus 245
26(T)	Aus 819, 820
27(T)	Aus 817
28(T)	Aus 252
29(T)	Aus 250
30(T)	Aus 249
31(T)	Aus 839, 841
32(T)	Aus 252, 253
33(T)	Aus 236
34(T)	PNG 392, 393, 543, 666
35(T)	PNG 519
36(T)	Aus 26
37(T)	Aus 26
38(T)	Aus 26
39(T)	Aus 309, 316
40(T)	Aus 18, 721
41(T)	Aus 310
42(T)	Aus 64, 328, 743, 744
43(T)	Aus 37, 320, 729, 730
44(T)	Aus 319, 320
45(T)	Aus 117
46(T)	Aus 744, 745
47(T)	Aus 118
48(T)	Aus 332
49(T)	Aus 40, 41
50(T)	Aus 328, 329
51(T)	Aus 53
52(T)	Aus 53, 326, 327, 328, 4070, 4071, 4603, 4708, 4722, 4723, INT 70, 71, 603, 708, 722, 723
53(T)	Aus 64, 743
54(T)	Aus 64
55(T)	Aus 112
56(T)	Aus 754
57(T)	Aus 64, 328, 743, 744, 4723, INT 723
58(T)	Aus 755, 4708, 4709, INT 708, 709
59(T)	Aus 781
60(T)	Aus 777, 778
61(T)	Aus 485, 777, 778, 4060, 4709, INT 60, 709
62(T)	Aus 357, 487
63(T)	Aus 357, 487, 802
64(T)	Aus 349, 487
65(T)	Aus 143, 157

Notices	Aus Chart, INT Chart, ENC Cell, AHP, BA Pubs
66(T)	Aus 143, 155
67(T)	Aus 140, 349
68(T)	Aus 163
69(T)	Aus 177
70(T)	Aus 766, 797
71(T)	Aus 164
72(T)	Aus 164
73(T)	Aus 173, 795
74(T)	Aus 171
75(T)	TEMPORARY AND PRELIMINARY NOTICES

NUMERICAL INDEX OF CHARTS AFFECTED

Edition No 1

Aus Chart	Notices
Aus 18	40(T)
Aus 26	36(T), 37(T), 38(T)
Aus 37	13, 43(T)
Aus 40	16, 49(T)
Aus 41	16, 49(T)
Aus 53	51(T), 52(T)
Aus 64	42(T), 53(T), 54(T), 57(T)
Aus 81	15
Aus 112	55(T)
Aus 117	14, 45(T)
Aus 118	47(T)
Aus 136	18
Aus 140	67(T)
Aus 143	19, 20, 65(T), 66(T)
Aus 155	19, 20, 66(T)
Aus 157	20, 65(T)
Aus 163	68(T)
Aus 164	71(T), 72(T)
Aus 171	74(T)
Aus 173	73(T)
Aus 177	69(T)
Aus 236	33(T)
Aus 237	6, 21(T)
Aus 242	22(T)
Aus 245	24(T), 25(T)
Aus 246	8, 24(T)
Aus 249	30(T)
Aus 250	29(T)
Aus 252	28(T), 32(T)
Aus 253	32(T)
Aus 256	2, 9
Aus 293	10
Aus 299	10, 11
Aus 309	39(T)
Aus 310	41(T)
Aus 316	12, 39(T)
Aus 319	44(T)
Aus 320	13, 43(T), 44(T)
Aus 326	52(T)
Aus 327	52(T)
Aus 328	42(T), 50(T), 52(T), 57(T)
Aus 329	17, 50(T)
Aus 332	48(T)
Aus 349	64(T), 67(T)
Aus 357	62(T), 63(T)
Aus 485	18, 61(T)
Aus 487	62(T), 63(T), 64(T)
Aus 489	4
Aus 721	40(T)
Aus 727	2
Aus 729	13, 43(T)
Aus 730	13, 43(T)
Aus 743	42(T), 53(T), 57(T)
Aus 744	17, 42(T), 46(T), 57(T)

Aus Chart	Notices
Aus 745	46(T)
Aus 754	56(T)
Aus 755	58(T)
Aus 766	70(T)
Aus 777	60(T), 61(T)
Aus 778	18, 60(T), 61(T)
Aus 781	59(T)
Aus 795	73(T)
Aus 797	70(T)
Aus 802	63(T)
Aus 807	3
Aus 809	4
Aus 815	5
Aus 817	7, 27(T)
Aus 818	7
Aus 819	26(T)
Aus 820	26(T)
Aus 827	9, 23(T)
Aus 839	31(T)
Aus 841	31(T)
Aus 4060	61(T)
Aus 4070	52(T)
Aus 4071	52(T)
Aus 4603	52(T)
Aus 4708	52(T), 58(T)
Aus 4709	58(T), 61(T)
Aus 4722	52(T)
Aus 4723	52(T), 57(T)
PNG 392	34(T)
PNG 393	34(T)
PNG 519	35(T)
PNG 543	34(T)
PNG 666	34(T)

INT Chart	Notices
INT 60	61(T)
INT 70	52(T)
INT 71	52(T)
INT 603	52(T)
INT 708	52(T), 58(T)
INT 709	58(T), 61(T)
INT 722	52(T)
INT 723	52(T), 57(T)

1 AUSTRALIA - Products - New Charts, New Editions, Withdrawn Charts

Australian Hydrographic Office

New Charts

<i>Chart</i>	<i>Title and Geographical limits</i>	<i>Scale</i>	<i>Publication Date</i>	<i>Remarks</i>
NIL				

New Electronic Navigation Chart (Aus ENC)

<i>Cell Name</i>	<i>Title</i>	<i>Publication Date</i>	<i>Remarks</i>
NIL			

New Editions and Withdrawn Charts

<i>Chart</i>	<i>Title</i>	<i>Scale</i>	<i>Publication Date</i>	<i>Remarks</i>
NIL				

Chart permanently withdrawn

Charts listed above as withdrawn no longer meet chart carriage requirements and should be marked as "superseded" and replaced with the new chart/ new edition listed prior to passage through the area covered by the new chart.

When placing orders with a chart agent between notice of forthcoming edition and its publication, mariners should advise whether their order pertains to the current edition or the new edition.

For further details refer to the AHO website at www.hydro.gov.au for new edition and new chart stock arrival information.

2 AUSTRALIA - Products - New Charts and New Editions to be published shortly

Australian Hydrographic Office

New Charts to be published shortly

<i>Chart</i>	<i>Title</i>	<i>Scale</i>	<i>Remarks</i>
NIL			

New Editions to be published shortly

<i>Chart</i>	<i>Title</i>	<i>Scale</i>	<i>Remarks</i>
Aus 256	Australia - East Coast - Queensland - Cleveland Bay and Approaches	1:50 000	New edition with general updating throughout; including updates to nav aids and the dredged channel.
Aus 727	Australia - North West Coast - Western Australia - Rocky Island to Eclipse Islands	1:150 000	New edition with general updating throughout; including new bathymetric data.

3 AUSTRALIA - NEW SOUTH WALES - Bannisters Point - Wreck eastwards*Former Notice - 193(T)/2023 is cancelled*

Department of Climate Change, Energy, the Environment and Water

Aus 807 [630/2024]

Insert	safe clearance depth, 65m, enclosed by danger circle with legend, Wk	35° 19'.08 S	150° 35'.43 E
--------	--	--------------	---------------

4 AUSTRALIA - NEW SOUTH WALES - Broken Bay - Barrenjoey Head - Light range

UKHO

Aus 489 [803/2024]

Amend	light range to 19M	33° 34'.8 S	151° 19'.8 E
-------	--------------------	-------------	--------------

Aus 809 [694/2024]

Amend	light range to 19M	33° 34'.8 S	151° 19'.8 E
-------	--------------------	-------------	--------------

5 AUSTRALIA - QUEENSLAND - Barwon Bank - Contour

UKHO

Aus 815 [NE 6/12/2024]Insert contour to enclose depth, 27₆m

26° 28'.54 S 153° 32'.37 E

6 AUSTRALIA - QUEENSLAND - Brisbane River - Inner Bar Reach to Lytton and Quarantine Reach - Depths, infrastructure

Maritime Safety Queensland

Aus 237 [468/2024]Insert accompanying block A
accompanying block B27° 23'.5 S 153° 09'.3 E
27° 24'.6 S 153° 08'.9 E**7 AUSTRALIA - QUEENSLAND - Burnett Heads - Light buoy northeastwards**

Maritime Safety Queensland Notice 599/2024

Aus 817 [949/2024]Move light buoy
to24° 40'.6 S 152° 29'.9 E
24° 40'.26 S 152° 29'.96 E**Aus 818** [349/2024]Move light buoy
to24° 40'.6 S 152° 29'.9 E
24° 40'.26 S 152° 29'.96 E**8 AUSTRALIA - QUEENSLAND - Rodds Peninsula - Richards Point - Light buoy**

Maritime Safety Queensland

Aus 246 [645/2022]

Delete light buoy

23° 58'.3 S 151° 37'.7 E

9 AUSTRALIA - QUEENSLAND - Townsville - Pilot boarding place

Maritime Safety Queensland Notice 620/2024

Aus 256 [696/2024]Move pilot boarding place, centred on
to19° 06'.0 S 146° 54'.2 E
19° 04'.22 S 146° 55'.06 E**Aus 827** [696/2024]Move pilot boarding place, centred on
to19° 06'.0 S 146° 54'.2 E
19° 04'.22 S 146° 55'.06 E**10 AUSTRALIA - TORRES STRAIT - Normanby Sound - Bertie Bay - Mooring buoy**

Maritime Safety Queensland

Aus 293 [513/2024]

Delete mooring buoy

10° 34'.2 S 142° 10'.0 E

Aus 299 [513/2024]

Delete mooring buoy

10° 34'.2 S 142° 10'.0 E

11 AUSTRALIA - TORRES STRAIT - Thursday Island Harbour - Anchorage

Maritime Safety Queensland Notice 600/2024

Aus 299 [10/2025]Insert anchor berth, desig *Commercial Anchorage Alpha*, centred on

10° 35'.408 S 142° 13'.440 E

12 AUSTRALIA - NORTHERN TERRITORY - Native Point - Fish aggregating device westwards

Northern Territory Government Notice 23(T)/2024

Aus 316 [667/2024]

Delete light buoy

12° 40'.0 S 130° 10'.0 E

13 AUSTRALIA - WESTERN AUSTRALIA - Bonaparte Archipelago - D'Arcole Islands to Augereau Island - Obstructions

European Space Agency

Aus 37 [1019/2021]

Insert	danger circle with legend, <i>Obstn</i> , centred on	14° 43'.71 S	125° 04'.91 E
	contour value, 15	14° 44'.68 S	125° 05'.06 E
	danger circle with legend, <i>Obstn</i> , centred on	14° 44'.82 S	125° 05'.02 E
	danger circle with legend, <i>Obstn</i> , centred on	14° 49'.37 S	125° 07'.51 E
	danger circle with legend, <i>Obstn</i> , centred on	14° 57'.22 S	124° 46'.19 E
Replace	depth, 15 ₆ m, with danger circle with legend, <i>Obstn</i>	14° 45'.0 S	125° 05'.5 E
Delete	depth, 13 ₇ m	14° 43'.8 S	125° 04'.9 E
	depth, 12 ₅ m	14° 44'.8 S	125° 05'.1 E

Aus 320 [244/2024]

Insert	danger line, between	14° 48'.97 S	125° 07'.43 E		
		14° 49'.39 S	125° 07'.33 E		
		14° 49'.53 S	125° 07'.48 E		
		14° 49'.49 S	125° 07'.71 E		
		14° 49'.13 S	125° 07'.80 E		
	danger line, between	14° 44'.47 S	125° 05'.09 E		
		14° 44'.73 S	125° 04'.87 E		
		14° 44'.96 S	125° 04'.89 E		
		14° 45'.25 S	125° 05'.61 E		
		14° 45'.05 S	125° 05'.73 E		
	danger circle with legend, <i>Obstn</i> , centred on contour value, 20	14° 44'.78 S	125° 05'.63 E		
		14° 43'.71 S	125° 04'.91 E		
		14° 45'.42 S	125° 05'.73 E		
		Delete	danger line, between	14° 49'.0 S	125° 07'.4 E
			danger line, between	14° 49'.1 S	125° 07'.8 E
14° 44'.5 S	125° 05'.1 E				
14° 44'.8 S	125° 05'.6 E				
14° 45'.1 S	125° 05'.7 E				
depth, 15 ₇ m	14° 53'.0 S			124° 43'.5 E	
depth, 1m	14° 54'.0 S			124° 44'.1 E	
depth, 3 ₃ m	14° 55'.0 S			124° 39'.6 E	
depth, 1 ₈ m	14° 56'.1 S	124° 43'.5 E			

Aus 729 [98/2024]

Insert	contour value, 20	14° 45'.28 S	125° 05'.59 E
	danger circle with legend, <i>Obstn</i> , centred on	14° 49'.37 S	125° 07'.51 E
Replace	depth, 13 ₇ m, with danger circle with legend, <i>Obstn</i>	14° 43'.7 S	125° 04'.9 E
	depth, 12 ₅ m and enclosing contour, with danger circle with legend, <i>Obstn</i>	14° 44'.8 S	125° 05'.0 E
	depth, 15 ₆ m, with danger circle with legend, <i>Obstn</i>	14° 45'.0 S	125° 05'.5 E
Delete	depth, 1m	14° 53'.0 S	124° 43'.5 E
	depth, 3 ₃ m	14° 54'.0 S	124° 44'.1 E
	depth, 1 ₈ m	14° 55'.0 S	124° 39'.6 E
	depth, 3 ₆ m	14° 56'.1 S	124° 43'.5 E
	depth, 1 ₈ m	14° 57'.2 S	124° 46'.2 E

Aus 730 [952/2024]

Delete	depth, 9 ₇ m	14° 44'.8 S	125° 05'.0 E
	depth, 8 ₉ m	14° 45'.0 S	125° 05'.5 E
	depth, 7 ₄ m	14° 49'.4 S	125° 07'.5 E
	depth, 1m	14° 53'.0 S	124° 43'.5 E
	depth, 3 ₃ m	14° 54'.0 S	124° 44'.1 E
	depth, 1 ₈ m	14° 55'.0 S	124° 39'.6 E
	depth, 3 ₆ m	14° 56'.1 S	124° 43'.5 E
	depth, 1 ₈ m	14° 57'.2 S	124° 46'.2 E

14 AUSTRALIA - WESTERN AUSTRALIA - Cockburn Sound - Kwinana - Lights
Fremantle Ports

Aus 117 [NE 6/12/2024]

Amend	light to <i>F.R 29m 9M</i>	32° 12'.55 S	115° 45'.96 E
	light to <i>F.R 34m 6M</i>	32° 12'.61 S	115° 46'.21 E

15 AUSTRALIA - WESTERN AUSTRALIA - Geraldton - Fishing Boat Harbour - Depths
Mid West Ports Notice 8/2024

Aus 81 (Geraldton) [813/2024]

Insert	depth, 4_3m	28° 46'.298 S	114° 35'.577 E
	depth, 2_9m	28° 46'.335 S	114° 35'.584 E
Delete	depth, 4_4m	28° 46'.30 S	114° 35'.59 E
	depth, 6_2m and enclosing contour	28° 46'.35 S	114° 35'.58 E

16 AUSTRALIA - WESTERN AUSTRALIA - Koolan Island - The Canal - Mooring buoy
Trinacria Consulting

Aus 40 [817/2024]

Delete	mooring buoy	16° 09'.15 S	123° 45'.05 E
--------	--------------	--------------	---------------

Aus 41 (Koolan Island) [552/2024]

Delete	mooring buoy	16° 09'.15 S	123° 45'.05 E
--------	--------------	--------------	---------------

17 AUSTRALIA - WESTERN AUSTRALIA - Muiron Islands - Petroleum safety zone revoked northwestwards

NOPSEMA

Aus 329 [436/2024]

Delete	restricted area, centred on	21° 28'.9 S	114° 00'.5 E
--------	-----------------------------	-------------	--------------

Aus 744 [811/2024]

Delete	restricted area, centred on	21° 28'.9 S	114° 00'.5 E
--------	-----------------------------	-------------	--------------

18 AUSTRALIA - SOUTH AUSTRALIA - Port Bonython - Depths
Ocean Infinity

Aus 136 [554/2024]

Insert	accompanying ZOC diagram	32° 55'.0 S	138° 00'.2 E
	accompanying block	32° 59'.0 S	137° 46'.0 E

Aus 485 [856/2024]

Insert	accompanying block	33° 01'.0 S	137° 48'.0 E
--------	------------------------------------	-------------	--------------

Aus 778 [957/2024]

Insert	accompanying block	32° 59'.1 S	137° 46'.8 E
--------	------------------------------------	-------------	--------------

19 AUSTRALIA - VICTORIA - Port Phillip - Beaumaris Bay - Marine farm
Parks Victoria Notice 536/2024

Aus 143 [960/2024]

Delete	marine farm, centred on	37° 59'.8 S	145° 02'.9 E
--------	-------------------------	-------------	--------------

Aus 155 [959/2024]

Delete	marine farm, centred on	37° 59'.82 S	145° 02'.92 E
--------	-------------------------	--------------	---------------

20 AUSTRALIA - VICTORIA - Port Phillip - Scientific instruments

Ports Victoria Notice 4/2025

Aus 143 [19/2025]

Insert	special pillar light buoy, <i>Fl. Y.4s V2</i> , with topmark	38° 02'.37 S	144° 47'.47 E
	special pillar light buoy, <i>Fl. Y.4s V3</i> , with topmark	38° 03'.38 S	144° 47'.70 E
Replace	depth, 21 _g m, with special pillar light buoy, <i>Fl. Y.4s V4</i> , with topmark	38° 02'.6 S	144° 49'.6 E

Aus 155 [19/2025]

Insert	special pillar light buoy, <i>Fl. Y.4s V2</i> , with topmark	38° 02'.370 S	144° 47'.470 E
	special pillar light buoy, <i>Fl. Y.4s V4</i> , with topmark	38° 02'.631 S	144° 49'.553 E
Delete	depth, 21 _g m	38° 02'.59 S	144° 49'.58 E

Aus 157 [705/2024]

Insert	special pillar light buoy, <i>Fl. Y.4s V2</i> , with topmark	38° 02'.370 S	144° 47'.470 E
	special pillar light buoy, <i>Fl. Y.4s V3</i> , with topmark	38° 03'.377 S	144° 47'.700 E

21(T)/2025 AUSTRALIA - QUEENSLAND - Brisbane River - Entrance Channel to Hamilton Reach - Obstructions

Former Notice - 875(T)/2022 is cancelled
Maritime Safety Queensland

Cancel this notice on receipt.

Chart formerly affected - Aus 237

22(T)/2025 AUSTRALIA - QUEENSLAND - Bundaberg - Burnett River - Light buoy restored

Former Notice - 236(T)/2022 is cancelled
Maritime Safety Queensland

Cancel this notice on receipt.

Chart formerly affected - Aus 242

23(T)/2025 AUSTRALIA - QUEENSLAND - Cape Bowling Green - Light buoy off station

Maritime Safety Queensland Notice 606(T)/2024

The west cardinal light buoy, Q(9)15s (19° 17'.86 S 147° 22'.65 E), is off station; a special light buoy, *Fl.Y.2.5s*, exists in situ.

Mariners are advised to navigate west of the special light buoy and to navigate with caution in the area.

Chart temporarily affected - Aus 827

24(T)/2025 AUSTRALIA - QUEENSLAND - Gladstone - Dredging operations; bed levelling operations completed

Former Notice - 903(T)/2024 is cancelled
Maritime Safety Queensland

Cancel this notice on receipt.

Chart formerly affected - Aus 245 - Aus 246

25(T)/2025 AUSTRALIA - QUEENSLAND - Gladstone - Picnic Island to Hamilton Point - Scientific instruments recovered

Former Notice - 863(T)/2024 is cancelled
Maritime Safety Queensland

Cancel this notice on receipt.

Chart formerly affected - Aus 245

26(T)/2025 AUSTRALIA - QUEENSLAND - Great Keppel Island - Light beacon unlit

Maritime Safety Queensland Notice 603(T)/2024

The isolated danger light beacon, *Fl(2)6s* (23° 09'.21 S 150° 56'.31 E), is unlit.

Mariners are advised to navigate with caution in the area.

Chart temporarily affected - Aus 819 - Aus 820

27(T)/2025 AUSTRALIA - QUEENSLAND - Great Sandy Strait - Moon Point Bank - Wreck salvaged

Former Notice - 597(T)/2024 is cancelled
Maritime Safety Queensland

Cancel this notice on receipt.

Chart formerly affected - Aus 817

28(T)/2025 AUSTRALIA - QUEENSLAND - Laguna Quays - Shoaling

Former Notice - 972(T)/2023 is cancelled
Maritime Safety Queensland

Shoaling exists within Laguna Quays Marina (20° 36'.0 S 148° 41'.0 E).

Mariners are advised to navigate with caution in the area.

Chart temporarily affected - Aus 252

29(T)/2025 AUSTRALIA - QUEENSLAND - Mackay - Obstruction; light buoy removed

Former Notice - 429(T)/2020 is cancelled
Maritime Safety Queensland

Cancel this notice on receipt.

Chart formerly affected - Aus 250

30(T)/2025 AUSTRALIA - QUEENSLAND - Mackay - Pioneer River - Wreck salvaged

Former Notice - 971(T)/2024 is cancelled
Maritime Safety Queensland

Cancel this notice on receipt.

Chart formerly affected - Aus 249

31(T)/2025 AUSTRALIA - QUEENSLAND - Poll Islet - Wreck salvaged

Former Notice - 332(T)/2021 is cancelled
Maritime Safety Queensland

Cancel this notice on receipt.

Chart formerly affected - Aus 839 - Aus 841

32(T)/2025 AUSTRALIA - QUEENSLAND - Port of Airlie - Muddy Bay - Wreck

Maritime Safety Queensland Notice 2(T)/2025

A wreck marked by a special light buoy, *Fl.Y.2-5s*, exists in position 20° 16'.03 S 148° 43'.79 E.

Mariners are advised to navigate with caution in the area.

Chart temporarily affected - Aus 252 - Aus 253

33(T)/2025 AUSTRALIA - QUEENSLAND - Pumicestone Channel - Wreck salvaged, light buoy removed

Former Notice - 895(T)/2022 is cancelled
Maritime Safety Queensland

Cancel this notice on receipt.

Chart formerly affected - Aus 236

34(T)/2025 PAPUA NEW GUINEA - Kavieng to Neitab Island - Shoaling charted

Former Notice - 116(P)/2021 is cancelled
LADS Flight

Cancel this notice on receipt.

Chart formerly affected - PNG 392 - PNG 393 - PNG 543 - PNG 666

35(T)/2025 PAPUA NEW GUINEA - Star Reefs Passage - Shoaling charted

Former Notice - 670(P)/2022 is cancelled
Fugro LADS

Cancel this notice on receipt.

Chart formerly affected - PNG 519**36(T)/2025 AUSTRALIA - NORTHERN TERRITORY - Darwin - LNG Terminal - Light buoy removed**

Former Notice - 822(T)/2024 is cancelled
Northern Territory Government

Cancel this notice on receipt.

Chart formerly affected - Aus 26**37(T)/2025 AUSTRALIA - NORTHERN TERRITORY - Darwin - East Arm - Scientific instruments recovered**

Former Notice - 211(T)/2021 is cancelled
Northern Territory Government

Cancel this notice on receipt.

Chart formerly affected - Aus 26**38(T)/2025 AUSTRALIA - NORTHERN TERRITORY - Darwin - Survey operations; dredging operations**

Former Notice - 681(T)/2024 is cancelled
Northern Territory Government Notice 57/2024, 116/2024

Vessel *Edendrach* is conducting survey operations in an area bounded by the following positions:

12° 30'.23 S 130° 53'.46 E

12° 30'.22 S 130° 54'.29 E

12° 29'.36 S 130° 54'.28 E

12° 29'.36 S 130° 53'.46 E.

The dredges *Woomera*, *Nulla Nulla* and support vessels *Stradbroke*, *PM South*, *Salute* and *Groote Eylandt* are conducting dredging operations in the area.

Mariners are advised to navigate with caution in the area.

Chart temporarily affected - Aus 26**39(T)/2025 AUSTRALIA - NORTHERN TERRITORY - Fish Reef - Light unlit**

Northern Territory Government Notice 23(T)/2024

The light, *LFI.WR.10s 10/8M* (12° 25'.93 S 130° 26'.56 E), is unlit.

Chart temporarily affected - Aus 309 - Aus 316**40(T)/2025 AUSTRALIA - NORTHERN TERRITORY - Orontes Reef - Obstruction**

Northern Territory Government Notice 2(T)/2025

A ghost net exists in position 11° 02'.88 S 132° 04'.94 E. An electronic beacon has been attached to the ghost net.

Mariners are advised to navigate with caution in the area.

Chart temporarily affected - Aus 18 - Aus 721

41(T)/2025 AUSTRALIA - TIMOR SEA - Evans Shoal - Drill rig eastwards

Former Notice - 871(T)/2024 is cancelled
 MODU *Valaris MS-1*

Drill rig *Valaris MS-1* is conducting drilling operations in position 9° 47'.86 S 130° 12'.44 E.

Chart temporarily affected - Aus 310

42(T)/2025 AUSTRALIA - WESTERN AUSTRALIA - Ashburton Island - Scientific instrument recovered northwards

Former Notice - 647(T)/2021 is cancelled
 Pilbara Ports Authority

Cancel this notice on receipt.

Chart formerly affected - Aus 64 - Aus 328 - Aus 743 - Aus 744

43(T)/2025 AUSTRALIA - WESTERN AUSTRALIA - Bonaparte Archipelago - D'Arcole Islands to Augereau Island - Shoaling charted

Former Notice - 987(P)/2021 is cancelled
 European Space Agency

Cancel this notice on receipt.

Chart formerly affected - Aus 37 - Aus 320 - Aus 729 - Aus 730

44(T)/2025 AUSTRALIA - WESTERN AUSTRALIA - Browse Island - Accommodation vessel northwestwards

Former Notice - 679(T)/2023 is cancelled
 Australian Hydrographic Office

Cancel this notice on receipt.

Chart formerly affected - Aus 319 - Aus 320

45(T)/2025 AUSTRALIA - WESTERN AUSTRALIA - Cockburn Sound - Mangles Bay - Wreck salvaged

Former Notice - 826(T)/2024 is cancelled
 Department of Transport WA

Cancel this notice on receipt.

Chart formerly affected - Aus 117

46(T)/2025 AUSTRALIA - WESTERN AUSTRALIA - Exmouth - Scientific instruments

Department of Transport WA Notice 6268/2024

Scientific instruments, 5m below the surface, exist as follows:

<i>Position</i>	<i>Remarks</i>
21° 55'.56 S 114° 08'.87 E	marked by special light buoy, <i>Fl.Y.4s</i>
21° 57'.66 S 114° 08'.82 E	
21° 58'.02 S 114° 08'.76 E	marked by special light buoy, <i>Fl.Y.4s</i>
21° 59'.04 S 114° 08'.46 E.	

Chart temporarily affected - Aus 744 - Aus 745

47(T)/2025 AUSTRALIA - WESTERN AUSTRALIA - Isthmus Bay - Scientific instrument recovered

Former Notice - 616(T)/2024 is cancelled
 Department of Transport WA

Cancel this notice on receipt.

Chart formerly affected - Aus 118

48(T)/2025 AUSTRALIA - WESTERN AUSTRALIA - Kalbarri - Scientific instrument recovered

Former Notice - 28(T)/2024 is cancelled
RPS Group

Cancel this notice on receipt.

Chart formerly affected - Aus 332**49(T)/2025 AUSTRALIA - WESTERN AUSTRALIA - Koolan Island - The Canal - Mooring buoy**

Former Notice - 404(T)/2021 is cancelled
Trinacria Consulting

Cancel this notice on receipt.

Chart formerly affected - Aus 40 - Aus 41**50(T)/2025 AUSTRALIA - WESTERN AUSTRALIA - Muiron Islands - Drill rig northwestwards**

Former Notice - 917(T)/2024 is cancelled
Australian Maritime Safety Authority Auscoast Warning 7/2025

Drill rig *Transocean Endurance* is conducting drilling operations in position 21° 28'.18 S 113° 50'.73 E.

Chart temporarily affected - Aus 328 - Aus 329**51(T)/2025 AUSTRALIA - WESTERN AUSTRALIA - Port Hedland - Spoil Bank - Light beacon installation works completed**

Former Notice - 579(T)/2023 is cancelled
Pilbara Ports Authority

Cancel this notice on receipt.

Chart formerly affected - Aus 53**52(T)/2025 AUSTRALIA - WESTERN AUSTRALIA - Port Hedland to Cuvier Abyssal - Cable laying operations completed**

Former Notice - 40(T)/2023 is cancelled
33 Below Pty Ltd

Cancel this notice on receipt.

Chart formerly affected - Aus 53 - Aus 326 - Aus 327 - Aus 328 - Aus 4070 (INT 70) - Aus 4071 (INT 71) - Aus 4603 (INT 603) - Aus 4708 (INT 708) - Aus 4722 (INT 722) - Aus 4723 (INT 723)

53(T)/2025 AUSTRALIA - WESTERN AUSTRALIA - Port of Ashburton - Scientific instrument recovered

Former Notice - 1075(T)/2021 is cancelled
Pilbara Ports Authority

Cancel this notice on receipt.

Chart formerly affected - Aus 64 - Aus 743**54(T)/2025 AUSTRALIA - WESTERN AUSTRALIA - Port of Ashburton - Harbour works completed**

Former Notice - 538(T)/2023 is cancelled
Pilbara Ports Authority

Cancel this notice on receipt.

Chart formerly affected - Aus 64

55(T)/2025 AUSTRALIA - WESTERN AUSTRALIA - Rottnest Island - Phillip Rock - Entry prohibited
Department of Transport WA Notice 6302/2025

Entry is prohibited within a 200m radius of position 31° 59'.83 S 115° 33'.78 E.

Only government vessels and those associated with a coordinated response on site are permitted to enter the area.

Mariners area advised to navigate with caution in the area.

Chart temporarily affected - Aus 112

56(T)/2025 AUSTRALIA - WESTERN AUSTRALIA - Rottnest Island - Light buoy off station westwards
Curtin University

The special light buoy, *Fl. Y. 5s AIS* (31° 58'.80 S 115° 13'.68 E), is off station and in position 31° 35'.64 S 115° 05'.00 E.

Chart temporarily affected - Aus 754

57(T)/2025 AUSTRALIA - WESTERN AUSTRALIA - Thevenard Island - Platform removed southwards
Former Notice - 721(T)/2023 is cancelled
Pilbara Ports Authority , Chevron Australia

Cancel this notice on receipt.

Chart formerly affected - Aus 64 - Aus 328 - Aus 743 - Aus 744 - Aus 4723 (INT 723)

58(T)/2025 AUSTRALIA - WESTERN AUSTRALIA - Warnbro Sound - Survey operations westwards
Subcom , Australian Maritime Safety Authority Auscoast Warning 13/2025

Vessel *Ocean Surveyor* is conducting survey operations in an area bounded by the following positions:

32° 07'.64 S 111° 04'.39 E

32° 34'.98 S 115° 13'.09 E

32° 14'.96 S 115° 16'.09 E

31° 47'.54 S 111° 05'.88 E.

Mariners are advised to navigate with caution in the area. 2.5M clearance requested.

Chart temporarily affected - Aus 755 - Aus 4708 (INT 708) - Aus 4709 (INT 709)

59(T)/2025 AUSTRALIA - SOUTH AUSTRALIA - Gulf St Vincent - Port Gawler - Scientific instrument
Former Notice - 305(T)/2024 is cancelled
Department for Infrastructure and Transport SA Notice 82(T)/2024

A subsurface scientific instrument exists on the seabed, with a minimum safe clearance of 2m, in position 34° 41'.89 S 138° 24'.83 E.

Mariners are advised to navigate with caution in the area.

Chart temporarily affected - Aus 781

60(T)/2025 AUSTRALIA - SOUTH AUSTRALIA - Point Riley to Shoalwater Point - Survey operations

Fugro

On or about 20 January 2025, vessel *Empress Prowler*, with a towed array, will be conducting survey operations in areas bounded by the following positions:

33° 52'.31 S 137° 36'.51 E
 33° 51'.01 S 137° 35'.40 E
 33° 50'.83 S 137° 35'.08 E
 33° 51'.63 S 137° 34'.25 E
 33° 51'.89 S 137° 34'.76 E;
 and
 33° 39'.50 S 137° 12'.92 E
 33° 41'.39 S 137° 15'.12 E
 33° 42'.03 S 137° 16'.28 E
 33° 41'.26 S 137° 17'.30 E
 33° 40'.44 S 137° 15'.75 E.

The vessel will display appropriate lights and shapes and will monitor VHF Ch 12 and Ch 16.

Mariners are advised to navigate with caution in the area. 500m clearance requested.

Chart temporarily affected - Aus 777 - Aus 778

61(T)/2025 AUSTRALIA - SOUTH AUSTRALIA - Point Riley to Shoalwater Point - Survey operations

Fugro

Vessel *Ocean Dynasty*, with a towed array, is conducting survey operations in an area bounded by the following positions:

33° 51'.77 S 137° 34'.42 E
 33° 50'.95 S 137° 35'.25 E
 33° 41'.08 S 137° 17'.08 E
 33° 41'.99 S 137° 16'.21 E.

The vessel will display appropriate lights and shapes and will monitor VHF Ch 12 and Ch 16.

Mariners are advised to navigate with caution in the area. 500m clearance requested.

Chart temporarily affected - Aus 485 - Aus 777 - Aus 778 - Aus 4060 (INT 60) - Aus 4709 (INT 709)

62(T)/2025 AUSTRALIA - VICTORIA - Ninety Mile Beach - Geotechnical operations

Former Notice - 927(T)/2024 is cancelled

Safe Transport Victoria Notice 2(T)/2025

MV *Samson Explorer* is conducting subsea geotechnical and diving operations in an area bounded by the coast and the following positions:

38° 14'.45 S 147° 21'.94 E
 38° 15'.83 S 147° 23'.67 E
 38° 15'.72 S 147° 25'.25 E
 38° 14'.44 S 147° 25'.10 E
 38° 14'.08 S 147° 22'.40 E.

Mariners are advised to navigate with caution in the area. 500m clearance requested.

Chart temporarily affected - Aus 357 - Aus 487

63(T)/2025 AUSTRALIA - VICTORIA - Ninety Mile Beach - Survey operations

Former Notice - 926(T)/2024 is cancelled
Safe Transport Victoria Notice 6(T)/2025

MV *Offshore Surveyor*, with a 200m towed array, is conducting a geophysical survey in an area bounded the following positions:

38° 31'.17 S 147° 24'.22 E
38° 23'.89 S 147° 14'.83 E
38° 27'.56 S 147° 10'.21 E
38° 34'.96 S 147° 19'.75 E
38° 41'.91 S 147° 11'.52 E
38° 51'.34 S 147° 24'.51 E
38° 37'.26 S 147° 41'.11 E
38° 27'.86 S 147° 28'.13 E.

The vessel will monitor VHF Ch 16.

Mariners are advised to navigate with caution in the area. 500m clearance requested.

Chart temporarily affected - Aus 357 - Aus 487 - Aus 802

64(T)/2025 AUSTRALIA - VICTORIA - Port Campbell to Cape Paterson - Survey operations southwards

Former Notice - 930(T)/2024 is cancelled
Beach Energy Limited

MV *Offshore Solution* is conducting a geophysical survey and geotechnical sampling in areas bounded by the following positions:

38° 42'.44 S 143° 02'.98 E
38° 48'.02 S 143° 05'.10 E
39° 37'.32 S 143° 14'.13 E
39° 49'.91 S 143° 14'.13 E
38° 49'.91 S 142° 53'.92 E
39° 37'.32 S 142° 53'.92 E
39° 04'.93 S 142° 35'.07 E
38° 54'.91 S 142° 35'.08 E
38° 42'.46 S 142° 42'.99 E;
and
40° 04'.91 S 145° 10'.08 E
40° 04'.91 S 145° 55'.13 E
39° 44'.90 S 145° 55'.10 E
39° 44'.91 S 145° 10'.08 E.

Mariners are advised to navigate with caution in the area. 500m clearance requested.

Chart temporarily affected - Aus 349 - Aus 487

65(T)/2025 AUSTRALIA - VICTORIA - Port Phillip - West Channel - AUV trial completed

Former Notice - 931(T)/2024 is cancelled
Parks Victoria Notice 545(T)/2024

Cancel this notice on receipt.

Chart formerly affected - Aus 143 - Aus 157

66(T)/2025 AUSTRALIA - VICTORIA - Port Phillip - Altona Reef - Light buoy restored southeastwards

Former Notice - 764(T)/2024 is cancelled
Parks Victoria Notice 580/2024

Cancel this notice on receipt.

Chart formerly affected - Aus 143 - Aus 155

67(T)/2025 AUSTRALIA - VICTORIA - Portland Bay to Childers Cove - Scientific instruments southwards
RPS Group

Subsurface scientific instruments, 15m above seabed, exist in the following positions:

38° 30'.85 S 141° 49'.17 E
38° 33'.86 S 142° 18'.53 E
38° 40'.79 S 142° 02'.60 E
38° 50'.39 S 142° 35'.64 E.

Mariners are advised to navigate with caution in the area.

Chart temporarily affected - Aus 140 - Aus 349

68(T)/2025 AUSTRALIA - TASMANIA - Burnie - Harbour works completed

Former Notice - 733(T)/2020 is cancelled
Maritime and Safety Tasmania Notice M217/2018, Toll Group

Cancel this notice on receipt.

Chart formerly affected - Aus 163

69(T)/2025 AUSTRALIA - TASMANIA - Macquarie Harbour - Table Head - Scientific instrument

Marine and Safety Tasmania Notice M430(T)/2024

A scientific instrument marked by a special buoy exists in position 42° 16'.86 S 145° 16'.84 E.

Mariners are advised to navigate with caution in the area.

Chart temporarily affected - Aus 177

70(T)/2025 AUSTRALIA - TASMANIA - Maria Island - Light buoy off station northeastwards

Former Notice - 1034(T)/2023 is cancelled
Marine and Safety Tasmania Notice M445(T)/2024

The special light buoy, *Fl(5)Y.20s* (42° 31'.8 S 148° 21'.0 E), is off station.

Chart temporarily affected - Aus 766 - Aus 797

71(T)/2025 AUSTRALIA - TASMANIA - Moorland Point to Claytons Bay - Scientific instruments northwards

Marine and Safety Tasmania Notice M405(T)/2024

Special light buoys, *Fl.Y*, exist in the following positions:

41° 09'.11 S 146° 13'.67 E
41° 03'.95 S 146° 20'.34 E
41° 06'.54 S 146° 26'.29 E
41° 09'.69 S 146° 23'.66 E
41° 09'.83 S 146° 22'.64 E.

Mariners are advised not to moor to the light buoys and to navigate with caution in the area.

Chart temporarily affected - Aus 164

72(T)/2025 AUSTRALIA - TASMANIA - Moorland Point to Claytons Bay - Scientific instruments northwards

Former Notice - 1018(T)/2024 is cancelled
Marine and Safety Tasmania Notice M405(T)/2024

Cancel this notice on receipt.

Chart formerly affected - Aus 164

73(T)/2025 AUSTRALIA - TASMANIA - Port Esperance - Hope Island - Light unreliable
Marine and Safety Tasmania Notice M429(T)/2024

The light, *Fl.3s 9m 6M* (43° 20'.25 S 147° 02'.83 E), is unreliable.

Chart temporarily affected - Aus 173 - Aus 795

74(T)/2025 AUSTRALIA - TASMANIA - River Derwent - Limekiln Point - Light beacon destroyed
Marine and Safety Tasmania Notice M449(T)/2024

The starboard lateral light beacon, *Fl.G.2s* (42° 50'.80 S 147° 20'.22 E), has been destroyed.

Mariners are advised to navigate with caution in the area.

Chart temporarily affected - Aus 171

75(T)/2025 AUSTRALIA - TEMPORARY AND PRELIMINARY NOTICES

Former Notice - 795(T)/2024 is cancelled

Australian Hydrographic Office

<i>Notice</i>	<i>Charts affected</i>	<i>Locality and Subject</i>
754/2022	Aus357 487	BASS STRAIT Racon non operational
788/2022	Aus614	CORAL SEA <i>Diamond Islets</i> Shoaling
21/2021	Aus618	<i>Middleton Reef</i> Unexploded ordnance
608/2023	Aus198	NEW SOUTH WALES <i>Botany Bay</i> Harbour works
963/2024	Aus195 198 489 808	<i>Botany Bay to Port Kembla</i> Survey operations
701/2023	Aus200 489 809	<i>Cape Banks to Cabbage Tree Bay</i> Scientific instruments eastwards
709/2016	Aus813	<i>Cape Byron</i> Obstructions eastwards
880/2021	Aus813	Light buoy off station northwards
808/2023	Aus222	<i>Clarence River</i> Scientific instrument
133/2023	Aus813	<i>Crabbes Creek Beach</i> Wreck eastwards
965/2024	Aus806	<i>Eden</i> Fish aggregating device off station northeastwards
105/2024	Aus812	<i>Green Bluff</i> Scientific instruments eastwards
604/2020	Aus807 808	<i>Jervis Bay</i> Light buoy
997/2020	Aus806 807	<i>Merimbula Bay to Broulee Island</i> Scientific instruments
106/2024	Aus806 807	<i>Montague Island</i> Scientific instruments
861/2024	Aus811	<i>Point Perpendicular</i> Fish aggregating device off station eastwards
105/2021	Aus200	<i>Port Jackson</i> Jetties ruined
61/2022	Aus200	Scientific instruments
740/2024	Aus200	Dredging operations
900/2024	Aus209	<i>Port Stephens</i> Scientific instrument
107/2024	Aus810	<i>Seal Rocks</i> Scientific instruments
727/2022	Aus489 806 807 808 809 810 4601 4602	<i>Tathra to Seal Rocks</i> Obstructions

75(T)/2025 AUSTRALIA - TEMPORARY AND PRELIMINARY NOTICES

<i>Notice</i>	<i>Charts affected</i>	<i>Locality and Subject</i>
		NORTHERN TERRITORY
532/2024	Aus23	<i>Apsley Strait</i> Light buoys off station
909/2024	Aus309 310 311	<i>Bathurst Island</i> Tide gauges; buoys westwards
893/2023	Aus25	<i>Darwin</i> Mooring buoy off station
680/2024	Aus26	Scientific instruments
910/2024	Aus25 26	Scientific instruments
38/2025	Aus26	Survey operations; dredging operations
870/2024	Aus25 26 309 316	<i>Darwin to Shepparton Shoal</i> Pipe laying operations
39/2025	Aus309 316	<i>Fish Reef</i> Light unlit
678/2023	Aus310	<i>Goodrich Bank</i> Light buoy off station northwestwards
565/2024	Aus14	<i>Groote Eylandt</i> Harbour works; exclusion zone; light unlit
40/2025	Aus18 721	<i>Orontes Reef</i> Obstruction
		QUEENSLAND
324/2024	Aus255 826	<i>Abbot Point</i> Lights altered
461/2017	Aus268	<i>Bowen</i> Obstruction
213/2018	Aus236	<i>Bribie Island</i> Shoaling
27/2018	Aus236	<i>Brisbane</i> Harbour works
877/2022	Aus237	<i>Brisbane River</i> Wreck
99/2023	Aus237	Obstruction; light buoy
753/2023	Aus237	Lights unlit
862/2024	Aus237	Light buoys; harbour works
901/2024	Aus237	Scientific instrument
388/2022	Aus242	<i>Bundaberg</i> Shoaling
277/2022	Aus262	<i>Cairns</i> Wreck
743/2024	Aus262	Wreck
398/2023	Aus236 815	<i>Caloundra Head</i> Light unlit
105/2020	Aus827	<i>Cape Bowling Green</i> Obstruction; light buoy
23/2025	Aus827	Light buoy off station
247/2021	Aus256	<i>Cape Ferguson</i> Scientific instrument

75(T)/2025 AUSTRALIA - TEMPORARY AND PRELIMINARY NOTICES

<i>Notice</i>	<i>Charts affected</i>	<i>Locality and Subject</i>
108/2024	Aus831 832	<i>Cape Flattery</i> Scientific instrument
596/2024	Aus256 827	<i>Cleveland Bay</i> Scientific instruments
968/2024	Aus4603	<i>Duyfken Point</i> Scientific instrument westwards
72/2018	Aus830	<i>Fitzroy Island</i> Light buoys
738/2021	Aus265	<i>Fitzroy River</i> Scientific instrument
980/2021	Aus819	Scientific instrument
484/2023	Aus265 819	Scientific instrument
741/2021	Aus817	<i>Fraser Island</i> Shoaling
64/2021	Aus245	<i>Gladstone</i> Harbour works
481/2024	Aus245 246	Harbour works
678/2024	Aus245 246	Scientific instruments
821/2024	Aus245	Scientific instruments
490/2022	Aus814	<i>Gold Coast Seaway</i> Light buoy destroyed eastwards
357/2023	Aus814	Wreck eastwards
523/2017	Aus821 824 825	<i>Great Barrier Reef</i> Shoaling
780/2024	Aus615 829 4602 4603 4604	Survey operations
904/2024	Aus819 820	<i>Great Keppel Island</i> Scientific instrument
26/2025	Aus819 820	Light beacon unlit
250/2024	Aus817	<i>Great Sandy Strait</i> Light buoys
215/2018	Aus259	<i>Hinchinbrook Channel</i> Wreck
360/2023	Aus259	Light buoy off station
361/2023	Aus259 828	<i>Hinchinbrook Island</i> Light beacon destroyed
249/2021	Aus260 367 822	<i>Holt Island to Hexham Island</i> Shoaling
548/2019	Aus821 824	<i>Hydrographers Passage</i> Shoaling
488/2019	Aus303	<i>Karumba</i> Wreck northwards
407/2024	Aus6 303	Light removed
28/2025	Aus252	<i>Laguna Quays</i> Shoaling

75(T)/2025 AUSTRALIA - TEMPORARY AND PRELIMINARY NOTICES

<i>Notice</i>	<i>Charts affected</i>	<i>Locality and Subject</i>
736/2022	Aus236	<i>Moreton Bay</i> Mooring buoy
891/2022	Aus236 814 815	Obstruction
893/2022	Aus236	Light beacon unreliable
946/2022	Aus236	Light buoy unlit
813/2023	Aus236	Obstruction; light buoy
528/2024	Aus236	Scientific instrument
561/2024	Aus236 814 815	Light buoy off station
905/2024	Aus236	Wreck
973/2024	Aus236	Buoy
707/2023	Aus815	<i>Noosa Head</i> Scientific instrument
470/2017	Aus816	<i>North Gardner Bank</i> Foul ground
408/2024	Aus236 814	<i>North Stradbroke Island</i> Scientific instruments
409/2024	Aus819	<i>One Tree Island to Heron Island</i> Scientific instruments
362/2023	Aus827 828	<i>Orpheus Island</i> Light buoy removed
422/2022	Aus814	<i>Palm Beach</i> Light buoy off station
445/2024	Aus830	<i>Port Douglas</i> Light sectors unreliable
32/2025	Aus252 253	<i>Port of Airlie</i> Wreck
111/2024	Aus301	<i>Skardon River</i> Obstruction
1008/2020	Aus256	<i>Townsville</i> Wreck
67/2023	Aus256	Shoaling
68/2023	Aus255 256 268 825 826 827 828 829	Obstructions
1026/2022	Aus826	<i>Upstart Bay</i> Obstructions
603/2019	Aus4	<i>Weipa</i> Scientific instruments
530/2024	Aus4 301	Mooring buoy
711/2024	Aus262	<i>Yorkeys Knob</i> Shoaling; light buoy
1026/2023	Aus348	SOUTH AUSTRALIA <i>Cape Buffon</i> Light unlit
573/2024	Aus777	<i>Cape Hardy</i> Scientific instruments
1000/2024	Aus777	Geotechnical operations
337/2024	Aus120 341	<i>Denial Bay</i> Obstruction

75(T)/2025 AUSTRALIA - TEMPORARY AND PRELIMINARY NOTICES

<i>Notice</i>	<i>Charts affected</i>	<i>Locality and Subject</i>
81/2021	Aus781	<i>Gulf St Vincent</i> Artificial reef
803/2021	Aus130 780 781	Scientific instruments
757/2024	Aus130 485 781	Scientific instrument
758/2024	Aus130 485 781	Scientific instruments
59/2025	Aus781	Scientific instrument
168/2024	Aus780	<i>Kangaroo Island</i> Wreck
657/2024	Aus780	Shoaling
60/2025	Aus777 778	<i>Point Riley to Shoalwater Point</i> Survey operations
61/2025	Aus485 777 778 4060 4709	Survey operations
291/2021	Aus130	<i>Port Adelaide</i> Shoaling
622/2024	Aus130 485 781	Light beacon destroyed
921/2024	Aus130 485 781	Scientific instruments
1027/2023	Aus136	<i>Port Bonython</i> Scientific instrument
830/2024	Aus136 778	Light buoy unlit
884/2024	Aus136 778	Light beacon unlit
724/2023	Aus134	<i>Port Lincoln</i> Light beacon destroyed
42/2023	Aus776 777	<i>Spencer Gulf</i> Scientific instruments
574/2024	Aus136	Scientific instruments
658/2024	Aus136 778	Shoaling
724/2024	Aus136 778	Light buoy off station
998/2022	Aus777 778	<i>Two Hummock Point to Point Riley</i> Scientific instruments
587/2022	Aus777	<i>Wallaroo</i> Harbour works
1001/2024	Aus778	<i>Yarraville Shoals</i> Survey operations westwards
459/2024	Aus780 781	<i>Yorke Peninsula</i> Wreck
741/2024	Aus4601	TASMAN SEA <i>Tasman Basin</i> Light buoy off station
766/2024	Aus171 767 796 797	TASMANIA <i>Betsey Island to Saint Helens Point</i> Scientific instruments off station
308/2024	Aus173 795	<i>Bruny Island</i> Scientific instrument
384/2024	Aus163	<i>Burnie</i> Scientific instrument northwards
522/2020	Aus173	<i>D'Entrecasteaux Channel</i> Harbour works; light buoys

75(T)/2025 AUSTRALIA - TEMPORARY AND PRELIMINARY NOTICES

<i>Notice</i>	<i>Charts affected</i>	<i>Locality and Subject</i>
263/2018	Aus164	<i>Devonport</i> Shoaling
916/2022	Aus164	Virtual AIS
83/2023	Aus164	Harbour works
375/2023	Aus164	Berth
343/2024	Aus179	<i>Franklin Sound</i> Wreck
767/2024	Aus487 800	<i>Furieux Group</i> Survey operations
426/2024	Aus173	<i>Huon River</i> Wreck
167/2023	Aus179	<i>King Island</i> Platform, submarine cable, prohibited area
876/2023	Aus177 792	<i>Macquarie Harbour</i> Scientific instruments
85/2024	Aus177	Lit barge
133/2024	Aus177 792	Scientific instrument
134/2024	Aus177 792	Scientific instruments
344/2024	Aus177 792	Scientific instrument
69/2025	Aus177	Scientific instrument
673/2021	Aus766 797	<i>Maria Island</i> Scientific instruments
70/2025	Aus766 797	Light buoy off station northeastwards
1017/2024	Aus766 797	<i>Mercury Passage</i> Light buoy; AIS
71/2025	Aus164	<i>Moorland Point to Claytons Bay</i> Scientific instruments northwards
794/2024	Aus171	<i>Norfolk Bay</i> Wreck
677/2021	Aus171	<i>North West Bay</i> Mooring area
627/2016	Aus171 796	<i>Pipe Clay Head to Pitt Water</i> Scientific instruments
722/2021	Aus167	<i>Port Dalrymple</i> Harbour works
73/2025	Aus173 795	<i>Port Esperance</i> Light unreliable
839/2023	Aus798	<i>Ringarooma Bay</i> Scientific instrument
639/2023	Aus171 173	<i>River Derwent</i> Kelp longlines; light buoys
687/2024	Aus171 173	Pipe laying operations
74/2025	Aus171	Light beacon destroyed
158/2024	Aus310	TIMOR SEA <i>Evans Shoal</i> Subsea operations eastwards
41/2025	Aus310	Drill rig eastwards

75(T)/2025 AUSTRALIA - TEMPORARY AND PRELIMINARY NOTICES

<i>Notice</i>	<i>Charts affected</i>	<i>Locality and Subject</i>
369/2024 713/2024	Aus312 Aus312	<i>Sahul Banks</i> FPSO unlit Subsea operations southwards
TORRES STRAIT		
337/2021 27/2022	Aus841 Aus841	<i>Boigu Island</i> Shoaling Shoaling
866/2024	Aus700 842	<i>Cook Reef</i> Scientific instruments southwards
1049/2020	Aus842	<i>Deliverance Island</i> Shoaling
1025/2021	Aus839	<i>Great North East Channel</i> Scientific instrument
604/2024	Aus700 839 842	<i>Richardson Reef</i> Scientific instruments
17/2024	Aus377 840	<i>Yorke Islands</i> Scientific instrument
VICTORIA		
630/2022	Aus140 348 349	<i>Cape Duquesne</i> Scientific instruments
659/2024 885/2024	Aus357 487 802 Aus181 357 487 802	<i>Corner Inlet</i> Scientific instruments eastwards Survey operations eastwards
747/2022 112/2023 126/2024 376/2024 929/2024 1003/2024 62/2025 63/2025	Aus357 487 Aus357 487 Aus357 Aus357 487 4601 Aus357 487 Aus357 487 Aus357 487 Aus357 487 802	<i>Ninety Mile Beach</i> Traffic separation scheme southwestwards Virtual AIS southeastwards Scientific instrument eastwards Platform unlit eastwards Survey operations Drill rig Geotechnical operations Survey operations
1004/2024	Aus349	<i>Port Campbell</i> Subsea operations southwards
64/2025	Aus349 487	<i>Port Campbell to Cape Paterson</i> Survey operations southwards

75(T)/2025 AUSTRALIA - TEMPORARY AND PRELIMINARY NOTICES

<i>Notice</i>	<i>Charts affected</i>	<i>Locality and Subject</i>
		<i>Port Phillip</i>
350/2021	Aus153 157	Scientific instruments
409/2021	Aus157	Scientific instrument
413/2021	Aus157	Light buoys; AIS
618/2021	Aus155	Obstructions
1033/2021	Aus155	Buoy
294/2022	Aus143 157	Exclusion zone
589/2023	Aus143	Light beacon destroyed
834/2023	Aus143 155 157	Scientific instruments
948/2023	Aus143	Light beacon removed
1033/2023	Aus155	Light buoy off station westwards
80/2024	Aus155	Light buoy off station
128/2024	Aus143 155 157	Drilling operations
197/2024	Aus143	Beacon destroyed
340/2024	Aus143	Harbour works
504/2024	Aus157	Light buoy off station
763/2024	Aus143 155	Light beacon unlit
933/2024	Aus143 144	Shoaling southwards
934/2024	Aus155	Exclusion zone
1005/2024	Aus143	Moorings
1010/2024	Aus155	Beacon destroyed
		<i>Port Phillip Bay</i>
465/2023	Aus143 155	Wreck
		<i>Port Welshpool to McLoughlins Entrance</i>
895/2020	Aus181	Shoaling
		<i>Portland Bay to Childers Cove</i>
67/2025	Aus140 349	Scientific instruments southwards
		<i>Western Port</i>
664/2021	Aus151	Shoaling
665/2021	Aus151	Light beacons unlit
859/2021	Aus151	Exclusion zone
804/2022	Aus151	Jetty closed
425/2024	Aus151	Scientific instruments
625/2024	Aus151	Scientific instrument
		WESTERN AUSTRALIA
		<i>Barrow Island</i>
291/2019	Aus328	Well abandonment works northwestwards
942/2023	Aus65 742	Subsea operations
332/2024	Aus328	Subsea operations northwestwards
977/2024	Aus328	Subsea operations northwestwards
978/2024	Aus328	Scientific instrument northwestwards
		<i>Bateman Bay to Bills Bay</i>
223/2024	Aus745 746	Scientific instruments
		<i>Bathurst Island</i>
415/2024	Aus309 311	Survey operations westwards
		<i>Bonaparte Archipelago</i>
535/2023	Aus730	Obstruction
		<i>Broome</i>
913/2024	Aus50	Shoaling
		<i>Browse Island</i>
820/2023	Aus319 320 4603 4722	Light altered northwestwards
		<i>Bunbury</i>
623/2022	Aus115	Harbour works
652/2024	Aus115	Dredging operations; survey operations

75(T)/2025 AUSTRALIA - TEMPORARY AND PRELIMINARY NOTICES

<i>Notice</i>	<i>Charts affected</i>	<i>Locality and Subject</i>
982/2024	Aus754 755	<i>Cape Leschenault to Cape Bouvard</i> Fish aggregating devices westwards
297/2024	Aus335	<i>Cape Naturaliste</i> Scientific instrument northwestwards
613/2024	Aus327 742	<i>Cape Preston</i> Light buoy northwestwards
224/2024	Aus328 329 745	<i>Cape Range</i> Scientific instruments
767/2023 1062/2023	Aus73 Aus73	<i>Carnarvon</i> Obstructions Light beacon unlit
1063/2023 70/2024	Aus117 Aus117	<i>Cockburn Sound</i> Scientific instruments Light beacon destroyed
822/2023 334/2024 534/2024	Aus57 Aus57 327 Aus57	<i>Dampier</i> Scientific instrument AIS and racon inoperative Scientific instrument; exclusion zone
455/2023 25/2024 493/2024 876/2024	Aus57 327 Aus327 742 Aus327 742 Aus57 327 742	<i>Dampier Archipelago</i> Wreck Light buoy northwards Mooring buoy unlit northwards Drill rig
293/2023	Aus57 327	<i>Dampier Archipelago</i> Scientific instrument northwards
987/2024	Aus45	<i>Derby</i> Shoaling
916/2024	Aus65 327 328 742	<i>Double Island</i> Platform unlit
1078/2015	Aus318 319 727 728	<i>East Holothuria Reef</i> Shoaling
255/2024	Aus319	<i>Eugene McDermott Shoal</i> Drill rig northwestwards
785/2024	Aus319 322	<i>Eugene McDermott Shoal to Scott Reef</i> Scientific instruments
495/2024 46/2025	Aus744 745 Aus744 745	<i>Exmouth</i> Scientific instrument Scientific instruments
258/2024	Aus329 744	<i>Exmouth Gulf</i> Scientific instrument
719/2024	Aus4723	<i>Exmouth Plateau</i> Drilling operations
27/2024	Aus327 328 742 4722 4723	<i>Exmouth Plateau to Dampier</i> Pipe laying operations

75(T)/2025 AUSTRALIA - TEMPORARY AND PRELIMINARY NOTICES

<i>Notice</i>	<i>Charts affected</i>	<i>Locality and Subject</i>
1065/2023	Aus112 117	<i>Fremantle</i> Scientific instrument
72/2024	Aus117	Scientific instruments
259/2024	Aus112 117	Scientific instrument
988/2024	Aus112	Scientific instrument
367/2023	Aus332	<i>Gantheaume Bay</i> Scientific instrument northwestwards
1032/2022	Aus755	<i>Geographe Bay</i> Scientific instruments
418/2024	Aus81	<i>Geraldton</i> Obstruction; light buoy
877/2024	Aus81	Harbour works
878/2024	Aus327	<i>Glomar Shoal</i> Drill rig northwestwards
990/2024	Aus332	<i>Houtman Abrolhos</i> Fish aggregating device
991/2024	Aus318	<i>Joseph Bonaparte Gulf</i> Drill rig
992/2024	Aus753	<i>Jurien Bay</i> Fish aggregating device westwards
625/2023	Aus332	<i>Kalbarri</i> Scientific instrument
497/2024	Aus118	<i>King George Sound</i> Wave energy converter
627/2023	Aus324	<i>Lagrange Bay</i> Scientific instruments
31/2024	Aus754	<i>Laurance Reef to Quinns Rocks</i> Scientific instruments
900/2023	Aus65 742	<i>Lowendal Islands</i> Light altered
788/2024	Aus328 329 744	<i>Muiron Islands</i> Subsea operations northwestwards
995/2024	Aus328 329	Subsea operations northwestwards
50/2025	Aus328 329	Drill rig northwestwards
1036/2022	Aus754	<i>Mullaloo</i> Scientific instruments
996/2024	Aus335	<i>Naturaliste Reefs</i> Fish aggregating devices westwards
828/2024	Aus328 329	<i>North West Cape</i> Scientific instrument northwestwards
918/2024	Aus328 329 744 745 4060 4070 4071 4708 4723	Light unlit; light established
33/2024	Aus745	<i>Norwegian Bay</i> Beacon obscured
998/2024	Aus332 752	<i>Pelsaert Island</i> Fish aggregating device off station westwards

75(T)/2025 AUSTRALIA - TEMPORARY AND PRELIMINARY NOTICES

<i>Notice</i>	<i>Charts affected</i>	<i>Locality and Subject</i>
500/2024	Aus331	<i>Peron Peninsula</i> Scientific instruments
568/2024	Aus116	<i>Port Geographe Marina</i> Dredging operations
263/2024	Aus53	<i>Port Hedland</i> Light beacons altered
1285/2019 999/2024	Aus55 326 Aus55 326	<i>Port Walcott</i> Tide gauge Shoaling
620/2024	Aus118	<i>Princess Royal Harbour</i> Marine farm; light buoys
212/2020 774/2023 167/2024 55/2025 56/2025	Aus754 Aus112 Aus112 754 Aus112 Aus754	<i>Rottnest Island</i> Scientific instruments northwestwards Rock Scientific instrument northwards Entry prohibited Light buoy off station westwards
1039/2022	Aus754	<i>South West Break to Staggie Reef</i> Scientific instruments
265/2024 829/2024	Aus64 328 743 Aus328 743 744	<i>Thevenard Island</i> Obstruction Scientific instrument northwestwards
880/2024	Aus328 329 744	<i>Thevenard Island to Muiron Islands</i> Subsea operations northwestwards
630/2023	Aus118	<i>Torbay to King George Sound</i> Scientific instruments
509/2022	Aus112	<i>Trigg Island</i> Scientific instruments westwards
58/2025	Aus755 4708 4709	<i>Warnbro Sound</i> Survey operations westwards
621/2024	Aus336	<i>Wilson Head</i> Scientific instruments
685/2024	Aus40 732 733	<i>Yampi Sound</i> Light buoy unlit
183/2022	Aus920	INDIAN OCEAN <i>Christmas Island</i> Mooring buoy off station
904/2023	Aus607	<i>Cocos Islands</i> Light buoy
867/2023	Aus4708 4723	<i>Roo Rise</i> Light buoy off station
785/2022	Aus4604	PACIFIC OCEAN Scientific instruments
792/2022	Aus4604 PNG507	PAPUA NEW GUINEA <i>Ava Point</i> Light unlit

75(T)/2025 AUSTRALIA - TEMPORARY AND PRELIMINARY NOTICES

<i>Notice</i>	<i>Charts affected</i>	<i>Locality and Subject</i>
826/2020	PNG506 507 623	<i>Batumata Point</i> Shoaling
789/2018	Aus4622	<i>Bismarck Sea</i> Fish aggregating devices
771/2020	PNG379 647	<i>Boera Head</i> Light unlit
278/2023	PNG516 637	<i>Boli Point</i> Light unlit
279/2023	PNG516 637	<i>Bomatu Point</i> Light unlit
327/2022	PNG509 512	<i>Bonvouloir Islands</i> Light unlit
974/2023	Aus399 4622 PNG397 684	<i>Buka Passage</i> Light beacon unlit
963/2020 481/2021 288/2024	PNG647 648 PNG647 PNG647 648	<i>Caution Bay</i> Light beacon damaged Light beacon unlit Light beacon unlit
668/2020	Aus841	<i>Dauan Island</i> Light altered
829/2022	PNG509	<i>Dekatuwe (Bright) Island</i> Light beacon unlit
282/2023	PNG509 513	<i>Galagalohi (Gallows) Reef</i> Light unlit
908/2024	PNG378 502	<i>Gulf of Papua</i> Geotechnical survey operations
346/2019 794/2022	PNG643 Aus4622 PNG386 521 522 523	<i>Huon Gulf</i> Light buoy off station Fish aggregating devices
1331/2019	Aus625 PNG508	<i>Isulilai Point</i> Light beacon unlit
830/2022	PNG508 509 628	<i>Kanaweya (Shortland) Reefs to Nuakata Passage</i> Light beacons unlit
283/2023	PNG515 516 637	<i>Kitava Island</i> Light unlit
286/2019	PNG646	<i>Madang Harbour</i> Shoaling
118/2021	Aus399 4604 4622 PNG397 684	<i>Madehas Island</i> Light unlit
1110/2019	PNG628	<i>Oreore Channel</i> Light buoy off station
289/2024	PNG684	<i>Queen Carola Harbour</i> Light beacon unlit
975/2023 746/2024	PNG680 PNG545 554 680	<i>Rabaul</i> Light unlit Coastline

75(T)/2025 AUSTRALIA - TEMPORARY AND PRELIMINARY NOTICES

<i>Notice</i>	<i>Charts affected</i>	<i>Locality and Subject</i>
290/2024	PNG379 647	<i>Redscar Head</i> Light unlit
985/2021	Aus840 841	<i>Saibai Island</i> Shoaling
285/2023	PNG514	<i>Tamiaris Reef</i> Light unlit
1067/2021	Aus4604 4622 PNG545 554 680	<i>Tavui Point</i> Light unlit
367/2024	Aus4622 PNG389 651	<i>Unei Island</i> Light unlit
831/2022	PNG543 666	<i>Wadei Island</i> Light beacon unlit
SOLOMON ISLANDS		
938/2024	SLB102	<i>Blackett Strait</i> Shoaling
768/2024	SLB102 302	<i>Diamond Narrows to Munda Bar</i> Shoaling
726/2024	SLB201 304	<i>Florida Islands</i> Light beacon unlit
91/2018	SLB102 301 302	<i>Ghizo Island</i> Shoaling
878/2023	SLB101 201	<i>Honiara</i> Wrecks
939/2024	SLB101	Light buoys off station
940/2024	SLB101	Light buoy unlit
677/2017	SLB101	<i>Honiara and Lungga Roads</i> Shoaling
506/2024	SLB201 304	<i>Lengo Channel</i> Light beacon unlit
678/2017	SLB101 201	<i>Lungga Point</i> Light beacon unlit
987/2023	SLB101	<i>Lungga Roads</i> Shoaling
387/2024	SLB101	<i>Maru Sound</i> Light buoys off station
515/2023	SLB102 301 302	<i>Nusatupe Island</i> Topmarks destroyed
406/2020	SLB102	<i>Port Noro to Kuri Point</i> Shoaling
SOUTHERN OCEAN		
80/2022	Aus600	<i>Antarctica</i> Shoaling
228/2024	Aus4074	<i>Macquarie Island</i> Scientific instrument southwestwards

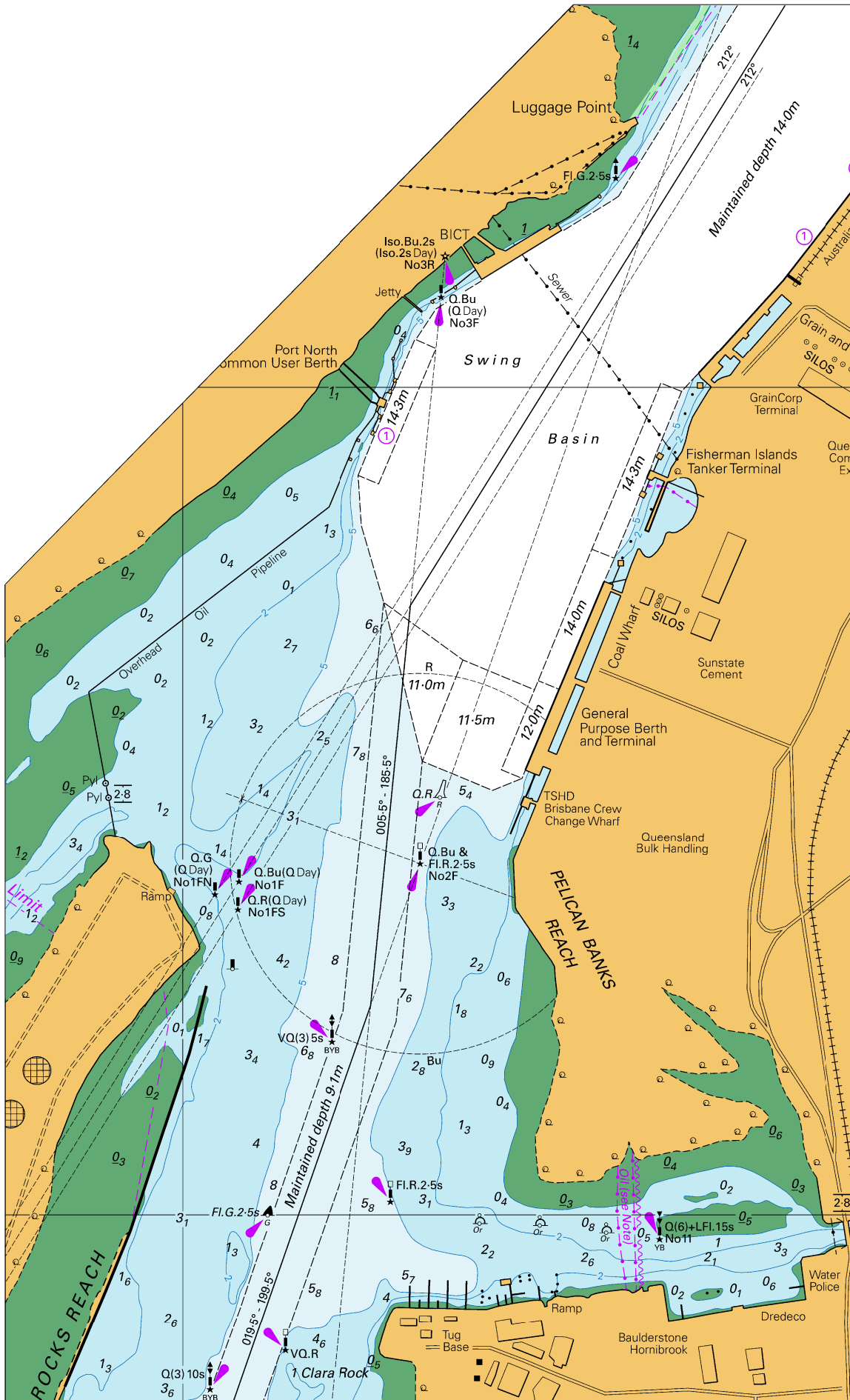
75(T)/2025 AUSTRALIA - TEMPORARY AND PRELIMINARY NOTICES

<i>Notice</i>	<i>Charts affected</i>	<i>Locality and Subject</i>
987/2018	Aus901	TIMOR-LESTE <i>Dili</i> Light unlit

II

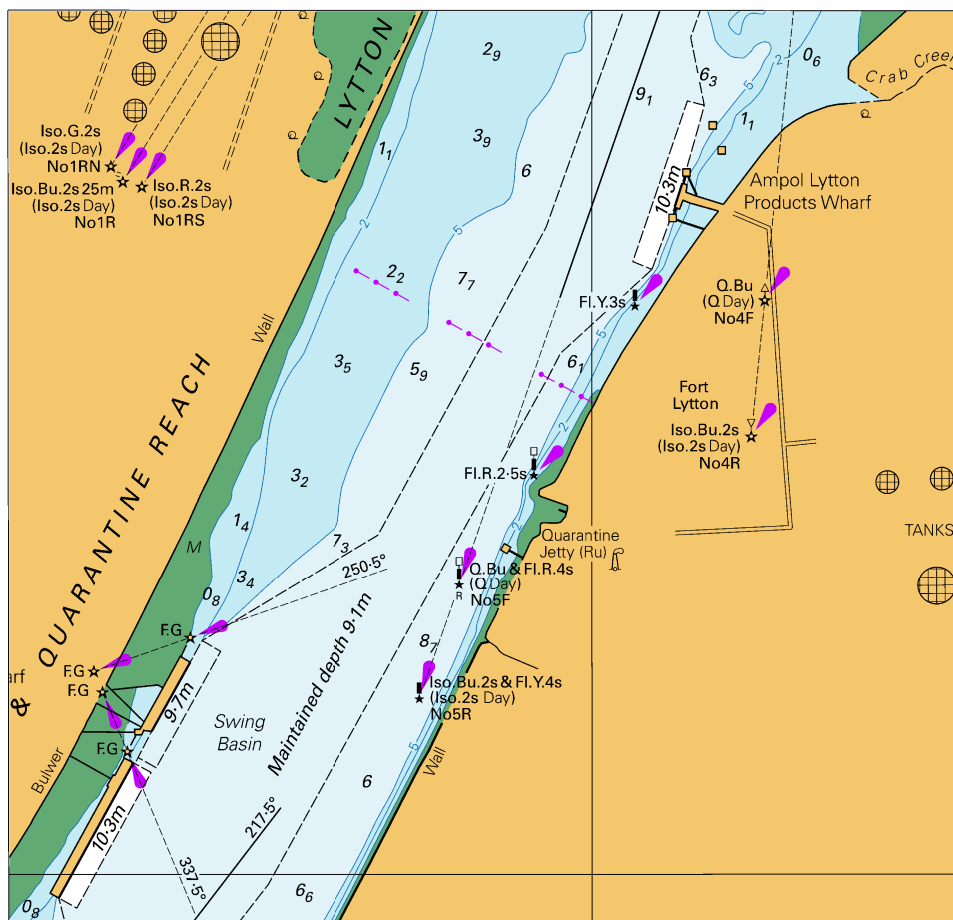
HYDROGRAPHIC REPORTS

NIL



Block A for chart Aus 237

To accompany Australian Notice to Mariners 6/2025

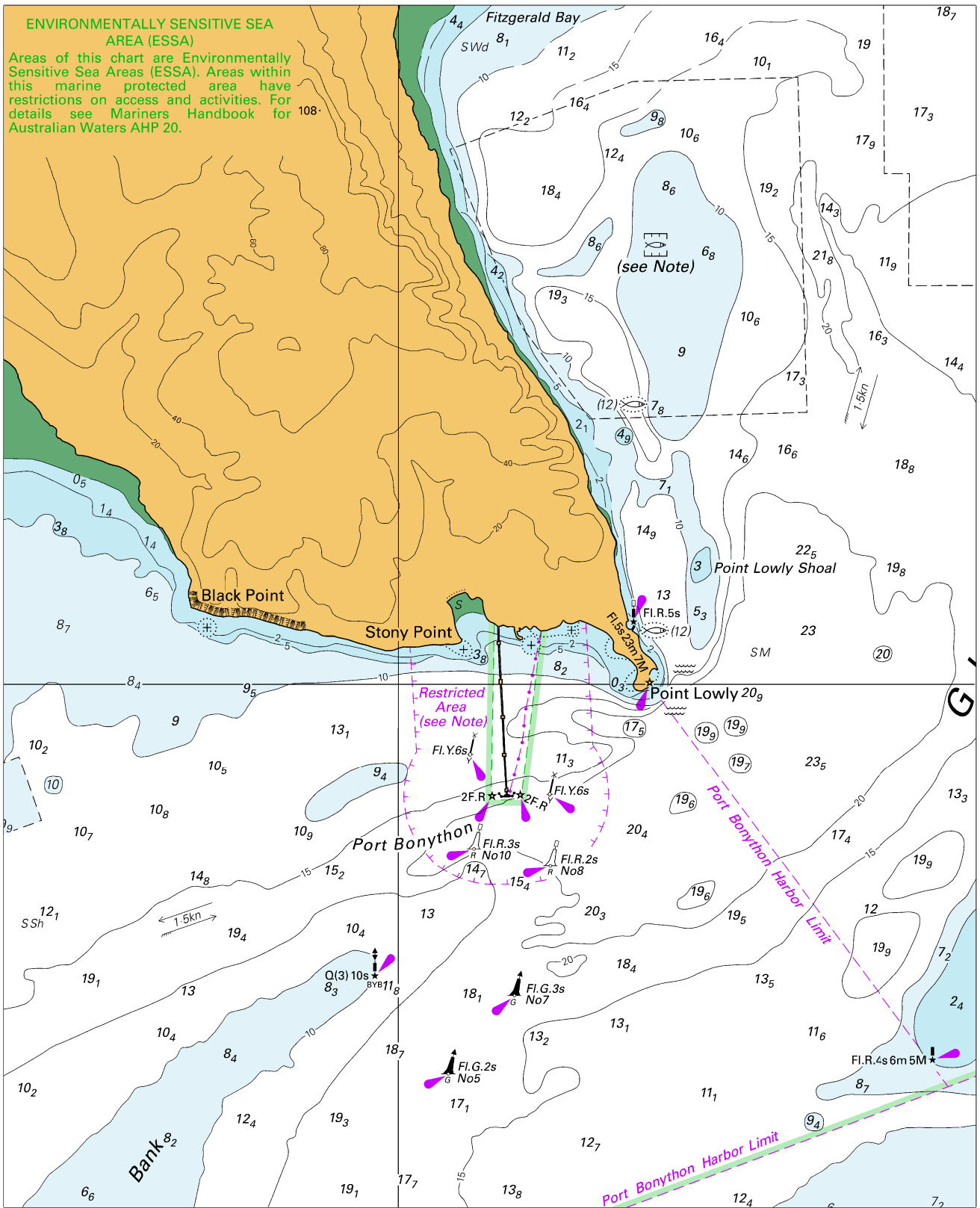


Block B for chart Aus 237

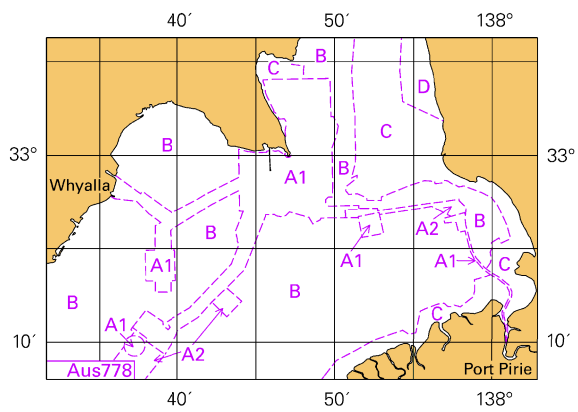
© Commonwealth of Australia 2025

(125.8 x 120.3mm)

To accompany Australian Notice to Mariners 18/2025



To accompany Australian Notice to Mariners 18/2025

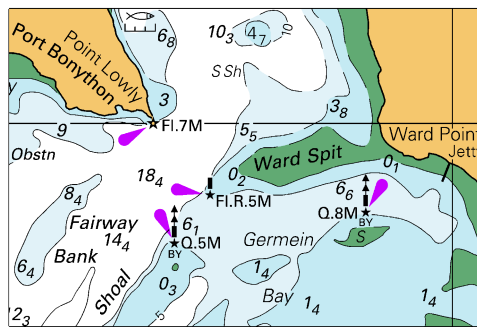


Block for chart Aus 136

(65.1 x 45.1mm)

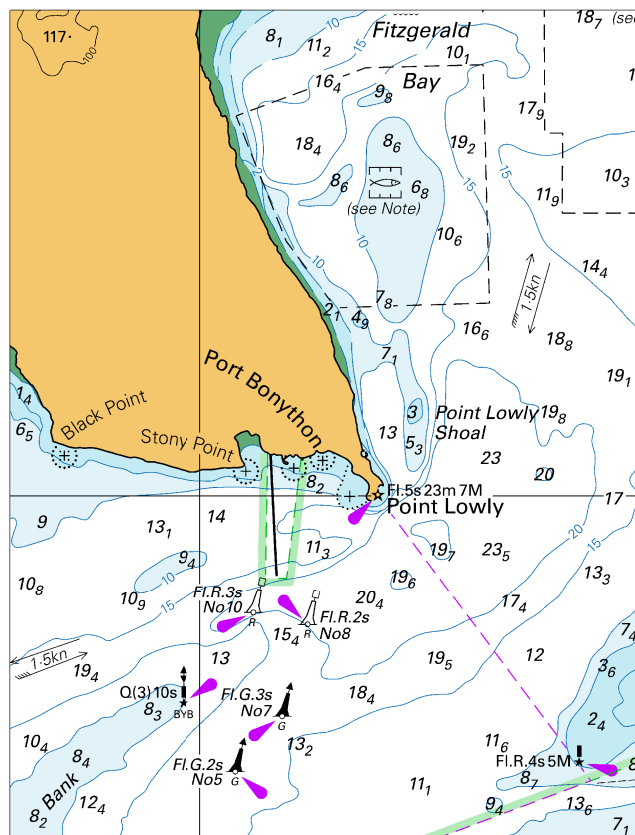
© Commonwealth of Australia 2025

To accompany Australian Notice to Mariners 18/2025



Block for chart Aus 485 (62.9 x 41.9mm)
© Commonwealth of Australia 2025

To accompany Australian Notice to Mariners 18/2025



Block for chart Aus 778

(83.6 x 109.4mm)

© Commonwealth of Australia 2025