



25 July 2025

Edition 15

AUSTRALIAN NOTICES TO MARINERS

Notices 640 - 687

Published fortnightly by the Australian Hydrographic Office



Australian Notices to Mariners are the authority for correcting charts and publications published by the Australian Hydrographic Office covering Australia, Papua New Guinea, Solomon Islands, Australian Antarctic Territory and Timor-Leste.

Commodore R.L. PHILLIPS RAN
Hydrographer of Australia

SECTIONS.

- I. **Australian Notices to Mariners, including blocks and notes.**
- II. **Hydrographic Reports.**

SUPPLEMENTS.

- I. **Tracings**
 - II. **Cumulative List of Australian Notices to Mariners.**
 - III. **Cumulative List of Temporary and Preliminary Australian Notices to Mariners.**
 - IV. **Temporary and Preliminary Notices in force.**
-
-

© Commonwealth of Australia 2025

This work is copyright. Apart from any use permitted under the Copyright Act 1968, no part may be reproduced by any process, adapted, communicated or commercially exploited without prior written permission from The Commonwealth represented by the Australian Hydrographic Office.

IMPORTANT NOTICE

This edition of Notices to Mariners includes all significant information affecting AHO products which the AHO has become aware of since the last edition. All reasonable efforts have been made to ensure the accuracy and completeness of the information, including third party information, on which these updates are based. The AHO regards third parties from which it receives information as reliable, however the AHO cannot verify all such information and errors may therefore exist. The AHO does not accept liability for errors in third party information.

GENERAL INSTRUCTIONS

The substance of these notices should be inserted on the charts affected.

Bearings are referred to the true compass and are reckoned clockwise from North; those relating to lights are given as seen by an observer from seaward.

Positions quoted in notices relate to WGS84 which is the horizontal datum for all charts produced by the Australian Hydrographic Office.

The range quoted for a light is its nominal range.

Depths are with reference to the chart datum of each chart. Heights are above mean high water springs or mean higher high water, as appropriate.

The capital letter (P) or (T) after the number of any notice denotes a preliminary or temporary notice respectively, which are contained separately at the end of the permanent notices.

REPORTING OF DANGERS

Mariners are particularly requested to notify the AUSTRALIAN HYDROGRAPHIC OFFICE, Locked Bag 8801 Wollongong, NSW 2500 (e-mail datacentre@hydro.gov.au or, alternatively by filling in and submitting the [Hydrographic Notes](#) forms located on the web site – www.hydro.gov.au), immediately on the discovery of new dangers or suspected dangers to navigation. For changes or defects in aids to navigation notify AusSAR (Fax 02-6230 6868 or email rccaus@amsa.gov.au).

AUTHORISED USE

Copies of Australian notices are available free of charge from the Australian Hydrographic Office (AHO) website (www.hydro.gov.au) and through the eNotices (email) service (www.hydro.gov.au/enotices/enotices.htm).

Individual Notices may be copied for the purpose of inserting Notice substance on official charts and publications. Paper copies may be printed by chart agents and distributed to customers on a cost recovery basis. Participating chart agents are listed on the AHO website as providing a 'Paper Notices to Mariners' service (www.hydro.gov.au/prodserv/agents-list.htm). Copies of the notices may not be sold for profit without prior written agreement.

NUMERICAL INDEX OF NOTICES TO MARINERS

Edition No 15

Notices	Aus Chart, INT Chart, ENC Cell, AHP, BA Pubs
640	Aus 181, 309, 311
641	Aus 827, 828, 829, 830
642	AusTides 2025
643	Aus 222
644	Aus 812
645	Aus 237
646	Aus 236, 815
647	Aus 254
648	Aus 293, 299, 700
649	Aus 700
650	Aus 310
651	Aus 50
652	Aus 57
653	Aus 55
654	Aus 63, 64
655	Aus 112
656	Aus 920
657	Aus 130
658	Aus 155
659	Aus 143, 144
660(T)	Aus 489, 808, 4601, 4602, INT 601, 602
661(T)	Aus 255, 268, 825, 826, 4602, 4603, 4604, INT 602, 603, 604
662(T)	Aus 830
663(T)	Aus 4, 301
664(T)	Aus 827
665(P)	Aus 826
666(T)	Aus 309, 315, 316, 318
667(T)	Aus 26
668(T)	Aus 316
669(T)	Aus 309, 310, 311, 315
670(T)	Aus 119
671(T)	Aus 328
672(T)	Aus 319, 320, 322
673(T)	Aus 57, 59
674(T)	Aus 55, 57, 326, 327
675(T)	Aus 327
676(T)	Aus 328
677(T)	Aus 328, 742
678(P)	Aus 50, 324
679(T)	Aus 64, 743
680(T)	Aus 40, 732, 733
681(T)	Aus 357
682(T)	Aus 357
683(T)	Aus 357, 487
684(T)	Aus 487
685(T)	Aus 167
686(T)	Aus 487, 790
687(T)	Aus 797

NUMERICAL INDEX OF CHARTS AFFECTED

Edition No 15

Aus Chart	Notices
Aus 4	663(T)
Aus 26	667(T)
Aus 40	680(T)
Aus 50	651, 678(P)
Aus 55	653, 674(T)
Aus 57	652, 673(T), 674(T)
Aus 59	673(T)
Aus 63	654
Aus 64	654, 679(T)
Aus 112	655
Aus 119	670(T)
Aus 130	657
Aus 143	659
Aus 144	659
Aus 155	658
Aus 167	685(T)
Aus 181	640
Aus 222	643
Aus 236	646
Aus 237	645
Aus 254	647
Aus 255	661(T)
Aus 268	661(T)
Aus 293	648
Aus 299	648
Aus 301	663(T)
Aus 309	640, 666(T), 669(T)
Aus 310	650, 669(T)
Aus 311	640, 669(T)
Aus 315	666(T), 669(T)
Aus 316	666(T), 668(T)
Aus 318	666(T)
Aus 319	672(T)
Aus 320	672(T)
Aus 322	672(T)
Aus 324	678(P)
Aus 326	674(T)
Aus 327	674(T), 675(T)
Aus 328	671(T), 676(T), 677(T)
Aus 357	681(T), 682(T), 683(T)
Aus 487	683(T), 684(T), 686(T)
Aus 489	660(T)
Aus 700	648, 649
Aus 732	680(T)
Aus 733	680(T)
Aus 742	677(T)
Aus 743	679(T)
Aus 790	686(T)
Aus 797	687(T)
Aus 808	660(T)
Aus 812	644
Aus 815	646
Aus 825	661(T)
Aus 826	661(T), 665(P)

Aus Chart	Notices
Aus 827	641, 664(T)
Aus 828	641
Aus 829	641
Aus 830	641, 662(T)
Aus 920	656
Aus 4601	660(T)
Aus 4602	660(T), 661(T)
Aus 4603	661(T)
Aus 4604	661(T)

INT Chart	Notices
INT 601	660(T)
INT 602	660(T), 661(T)
INT 603	661(T)
INT 604	661(T)

640 AUSTRALIA - Products - New Charts, New Editions, Withdrawn Charts

Australian Hydrographic Office

New Charts

Chart	Title and Geographical limits	Scale	Publication Date	Remarks
NIL				

New Electronic Navigation Chart (Aus ENC)

Cell Name	Title	Publication Date	Remarks
SB5RIN01	Solomon Islands - New Georgia Island - Ringgi Cove	17/7/2025	SB5102P2 is withdrawn.

New Editions and Withdrawn Charts

Chart	Title	Scale	Publication Date	Remarks
Aus 181 (Edition 2)	Australia - South Coast - Victoria - Corner Inlet Insets: McLoughlins Entrance Shoal Inlet Entrance	1:50 000 1:50 000 1:50 000	25/07/2025	New edition with general updating throughout; including latest bathymetric data. Chart Aus 181 Edition 1 dated 29 Nov 2013 is now superseded and must be withdrawn from use.
Aus 309 (Edition 6)	Australia - North Coast - Timor Sea - Darwin to Penguin Shoal (Eastern Sheet)	1:300 000	25/07/2025	New edition with general updating throughout; including latest bathymetric data. Chart Aus 309 Edition 5 dated 2 May 2025 is now superseded and must be withdrawn from use.
Aus 311 (Edition 5)	Australia - Timor-Leste - Timor Sea - Calder Shoal to Meatij Miarang	1:300 000	25/07/2025	New edition with general updating throughout; including latest bathymetric data. Chart Aus 311 Edition 4 dated 9 May 2008 is now superseded and must be withdrawn from use.

Chart permanently withdrawn

Charts listed above as withdrawn no longer meet chart carriage requirements and should be marked as "superseded" and replaced with the new chart/ new edition listed prior to passage through the area covered by the new chart.

When placing orders with a chart agent between notice of forthcoming edition and its publication, mariners should advise whether their order pertains to the current edition or the new edition.

For further details refer to the AHO website at www.hydro.gov.au for new edition and new chart stock arrival information.

641 AUSTRALIA - Products - New Charts and New Editions to be published shortly

Australian Hydrographic Office

New Charts to be published shortly

Chart	Title	Scale	Remarks
NIL			

New Editions to be published shortly

Chart	Title	Scale	Remarks
Aus 827	Australia - East Coast - Queensland - Cape Bowling Green to Palm Isles	1:150 000	New edition with general updating throughout; including latest bathymetric data.
Aus 828	Australia - East Coast - Queensland - Palm Isles to Brook Islands and Palm Passage	1:150 000	New edition with general updating throughout; including latest bathymetric data.
Aus 829	Australia - East Coast - Queensland - Brook Islands to Russell Island	1:150 000	New edition with general updating throughout; including latest bathymetric data.
Aus 830	Australia - East Coast - Queensland - Russell Island to Low Islets	1:150 000	New edition with general updating throughout; including latest bathymetric data.

642 AUSTRALIA - AusTides 2025

Australian Hydrographic Office

AusTides version 2.1.1 has been released. Version 2.0.2 has been officially withdrawn.

Version 2.1.1 contains a bug fix for the issue detailed in Australian Notice to Mariners 279/2025. It also provides the following new features - daylight times, and a windows-of-opportunity calculator.

For each station, the windows-of-opportunity calculator is located beneath the prediction export widget. Users will need to provide a distance between LAT and the seabed, and the size of their vessel draught. The exportable data will then provide an up to seven-day prediction forecast, showing times and their corresponding, predicted water-level clearances.

Please note that all daylight times are given in the computer's timezone.

Please visit <https://www.hydro.gov.au/software/products/downloads.htm> to download version 2.1.1 for free.

643 AUSTRALIA - NEW SOUTH WALES - Clarence River - Depths; historic wreck

Port Authority of New South Wales

Note: position of existing chart notes may vary on certain charts.

Aus 222 [281/2025]

Insert	accompanying chart note, HISTORIC WRECK accompanying block	29° 23'.75 S 29° 25'.7 S	153° 14'.55 E 153° 22'.5 E
Replace	depth, 5 ₃ m, with depth, 5m, enclosed by contour	29° 24'.46 S	153° 20'.56 E
Delete	depth, 11 ₄ m, and enclosing contour	29° 22'.80 S	153° 17'.70 E
	depth, 11 ₂ m, and enclosing contour	29° 22'.85 S	153° 17'.83 E
	depth, 1 ₈ m, and enclosing contour	29° 25'.54 S	153° 20'.94 E

644 AUSTRALIA - NEW SOUTH WALES - Pimpernel Rock - Light buoy
UKHO

Aus 812 [473/2025]

Amend light buoy to *Fl. Y. 4s* 29° 41'.9 S 153° 23'.9 E

645 AUSTRALIA - QUEENSLAND - Brisbane River - Hamilton Reach - Nomenclature
Australian Hydrographic Office

Aus 237 (Upper Lytton Reach to Hamilton Reach) [584/2025]

Amend name to *Portside Wharf* 27° 26'.45 S 153° 04'.10 E

646 AUSTRALIA - QUEENSLAND - Caloundra - Depths southeastwards
Port of Brisbane

Aus 236 [533/2025]

Replace depth, 19₆m, with depth, 19₉m 26° 48'.6 S 153° 11'.9 E

Delete depth, 19₇m, and enclosing contour 26° 49'.0 S 153° 11'.8 E

Aus 815 [529/2025]

Insert contour, between 26° 48'.89 S 153° 11'.37 E
26° 49'.38 S 153° 11'.68 E

Delete contour, between 26° 48'.9 S 153° 11'.4 E
26° 49'.0 S 153° 11'.8 E
26° 49'.4 S 153° 11'.7 E

647 AUSTRALIA - QUEENSLAND - Hamilton Island - Caution area
Maritime Safety Queensland Notice 318/2025

Aus 254 (Hamilton and Dent Islands) [530/2025]

Insert magenta legend, *Caution (see Note)* 20° 22'.0 S 148° 57'.5 E

648 AUSTRALIA - TORRES STRAIT - Ellis Channel - Hovell Bar - Depths; port limit; pilotage limit
Maritime Safety Queensland , UKHO

Aus 293 [591/2025]

Insert magenta dashed line with legend, *Port/Pilotage Limit*, between 10° 35'.776 S 142° 12'.488 E
10° 36'.509 S 142° 14'.195 E
[accompanying block](#) 10° 33'.0 S 142° 15'.5 E

Delete magenta dashed line with legend, *Port/Pilotage Limit*, between 10° 35'.78 S 142° 12'.49 E
10° 36'.13 S 142° 14'.35 E

Aus 299 [591/2025]

Insert [accompanying block](#) 10° 34'.2 S 142° 15'.4 E

Replace depth, 1₄m, with depth, 0₈m 10° 34'.28 S 142° 14'.94 E

Aus 700 [81/2025]

Replace depth, 2₃m, with depth, 1₆m, and extend contour W to enclose 10° 34'.2 S 142° 15'.4 E

649 AUSTRALIA - TORRES STRAIT - Wednesday Island - Ince Point - Depths
Australian Hydrographic Office

Aus 700 [648/2025]

Insert [accompanying block](#) 10° 30'.3 S 142° 19'.6 E

650 AUSTRALIA - NORTHERN TERRITORY - Melville Island - Cape Van Diemen - Depths westwards

Australian Hydrographic Office

Aus 310 [592/2025]Insert [accompanying block](#)

11° 06'.0 S

129° 23'.0 E

651 AUSTRALIA - WESTERN AUSTRALIA - Broome - Escape Rocks - Topmark

Kimberley Ports Authority Notice 13/2025

Aus 50 [398/2025]

Insert starboard lateral topmark

17° 59'.70 S

122° 09'.51 E

652 AUSTRALIA - WESTERN AUSTRALIA - Dampier - West Lewis Island - Light buoys

Pilbara Ports Authority Notice D13(T)/2025

Aus 57 [358/2025]

Insert	special pillar light buoy, <i>Fl. Y.3s</i> , with topmark	20° 31'.65 S	116° 39'.32 E
	special pillar light buoy, <i>Fl. Y.3s</i> , with topmark	20° 31'.65 S	116° 38'.00 E
	special pillar light buoy, <i>Fl. Y.3s</i> , with topmark	20° 31'.65 S	116° 38'.66 E
	special pillar light buoy, <i>Fl. Y.3s</i> , with topmark	20° 32'.23 S	116° 39'.46 E
	special pillar light buoy, <i>Fl. Y.3s</i> , with topmark	20° 32'.24 S	116° 38'.73 E
	special pillar light buoy, <i>Fl. Y.3s</i> , with topmark	20° 32'.25 S	116° 38'.00 E
	special pillar light buoy, <i>Fl. Y.3s</i> , with topmark	20° 36'.85 S	116° 36'.01 E
	special pillar light buoy, <i>Fl. Y.3s</i> , with topmark	20° 37'.58 S	116° 35'.99 E
	special pillar light buoy, <i>Fl. Y.3s</i> , with topmark	20° 37'.95 S	116° 37'.96 E
	special pillar light buoy, <i>Fl. Y.3s</i> , with topmark	20° 38'.01 S	116° 37'.22 E
Delete	depth, 8 ₃ m	20° 31'.6 S	116° 39'.3 E
	depth, 7 ₆ m	20° 38'.0 S	116° 37'.2 E

653 AUSTRALIA - WESTERN AUSTRALIA - Delambre Island - Obstruction; wreck eastwards

Australian Hydrographic Office

Aus 55 [89/2025]Insert depth, 17₄m, enclosed by danger circle with legend, *Obstn*

20° 25'.78 S

117° 12'.77 E

Delete depth, 13m, and enclosing danger circle with legend, *Wks*

20° 25'.8 S

117° 12'.8 E

654 AUSTRALIA - WESTERN AUSTRALIA - Mary Anne Passage to Port of Ashburton - ZOC diagram

Precision Hydrographic Services

Aus 63 [800/2023]Insert [accompanying ZOC diagram](#)

21° 03'.6 S

115° 12'.0 E

Aus 64 [598/2025]Insert [accompanying ZOC diagram](#)

21° 41'.5 S

115° 06'.0 E

655 AUSTRALIA - WESTERN AUSTRALIA - Scarborough - Submarine cable westwards

Vocus

Aus 112 [599/2025]

Insert	submarine cable, between	31° 51'.602 S	115° 40'.207 E
		31° 51'.670 S	115° 40'.087 E
		31° 51'.709 S	115° 40'.240 E
	submarine cable, between	31° 53'.318 S	115° 40'.875 E
		31° 53'.428 S	115° 41'.171 E
		31° 53'.548 S	115° 41'.189 E
Delete	submarine cable, between	31° 52'.550 S	115° 40'.476 E
		31° 52'.626 S	115° 40'.514 E
	submarine cable, between	31° 51'.60 S	115° 40'.21 E
		31° 51'.71 S	115° 40'.24 E
		31° 52'.55 S	115° 40'.48 E
	submarine cable, between	31° 52'.61 S	115° 40'.42 E
		31° 52'.63 S	115° 40'.51 E
		31° 53'.32 S	115° 40'.88 E
		31° 53'.55 S	115° 41'.19 E

656 INDIAN OCEAN - Christmas Island - Flying Fish Cove - Mooring Buoys

LINX

Aus 920 (Flying Fish Cove) [NE 5/7/2024]

Insert	accompanying block A	10° 25'.40 S	105° 40'.17 E
	accompanying block B	10° 25'.95 S	105° 39'.63 E

657 AUSTRALIA - SOUTH AUSTRALIA - Port Adelaide - Port limit

Flinders Ports

Aus 130 [544/2025]

Insert	accompanying block	34° 47'.755 S	138° 27'.977 E
--------	--------------------	---------------	----------------

658 AUSTRALIA - VICTORIA - Port Phillip - Pipeline

Port of Melbourne

Aus 155 [548/2025]

Insert	submarine pipeline with magenta legends, Gas (see Note), between	38° 00'.617 S	145° 01'.828 E
		38° 00'.583 S	145° 01'.606 E
		38° 00'.500 S	145° 01'.278 E
		38° 00'.375 S	145° 00'.972 E
		37° 56'.108 S	144° 53'.742 E
		37° 55'.924 S	144° 53'.482 E
		37° 55'.710 S	144° 53'.264 E
		37° 55'.469 S	144° 53'.094 E
		37° 55'.209 S	144° 52'.978 E
		37° 54'.938 S	144° 52'.917 E
		37° 54'.662 S	144° 52'.915 E
		37° 53'.336 S	144° 53'.044 E
		37° 53'.128 S	144° 53'.040 E
		37° 52'.924 S	144° 52'.989 E
		37° 52'.731 S	144° 52'.893 E
		37° 52'.554 S	144° 52'.755 E
		37° 52'.400 S	144° 52'.579 E
		37° 52'.299 S	144° 52'.440 E
Delete	submarine pipeline and magenta legends, Gas (see Note), between	38° 00'.62 S	145° 01'.83 E
		37° 52'.30 S	144° 52'.44 E

659 AUSTRALIA - VICTORIA - Port Phillip - South Channel - Nav aids

Port of Melbourne

Aus 143 [548/2025]

Amend legend to 182.5°

38° 13'.7 S

144° 54'.7 E

Move light beacon
to

38° 18'.2 S

144° 45'.5 E

38° 18'.28 S

144° 45'.51 E

Aus 144 [546/2025]Amend light beacon to *Fl(2)R.5s No4*

38° 17'.98 S

144° 43'.84 E

660(T)/2025 AUSTRALIA - NEW SOUTH WALES - Botany Bay to Eden - Survey operations completed eastwards

Former Notice - 549(T)/2025 is cancelled

Gulf Agency Company (Australia)

Cancel this notice on receipt.

Chart formerly affected - Aus 489 - Aus 808 - Aus 4601 (INT 601) - Aus 4602 (INT 602)

661(T)/2025 AUSTRALIA - QUEENSLAND - Abbot Point - Space launch northeastwards

Maritime Safety Queensland Notice 326(T)/2025, Australian Maritime Safety Authority Auscoast Warning 209/2025

Bowen Orbital Spaceport is expected to commence space vehicle launch operations from 27 July 2025. Prior to launch, a safety exclusion area will be activated. Abbot Point VTS will broadcast when the safety exclusion area is activated and again to cancel the safety exclusion area via VHF Ch 12 and Ch 16.

Mariners are advised that a person must not anchor, berth, moor or operate a ship (other than a ship owned and/or operated by Queensland Police Service, Maritime Safety Queensland or a ship authorised to assist with the monitoring and management of the safety exclusion area) within the safety exclusion area.

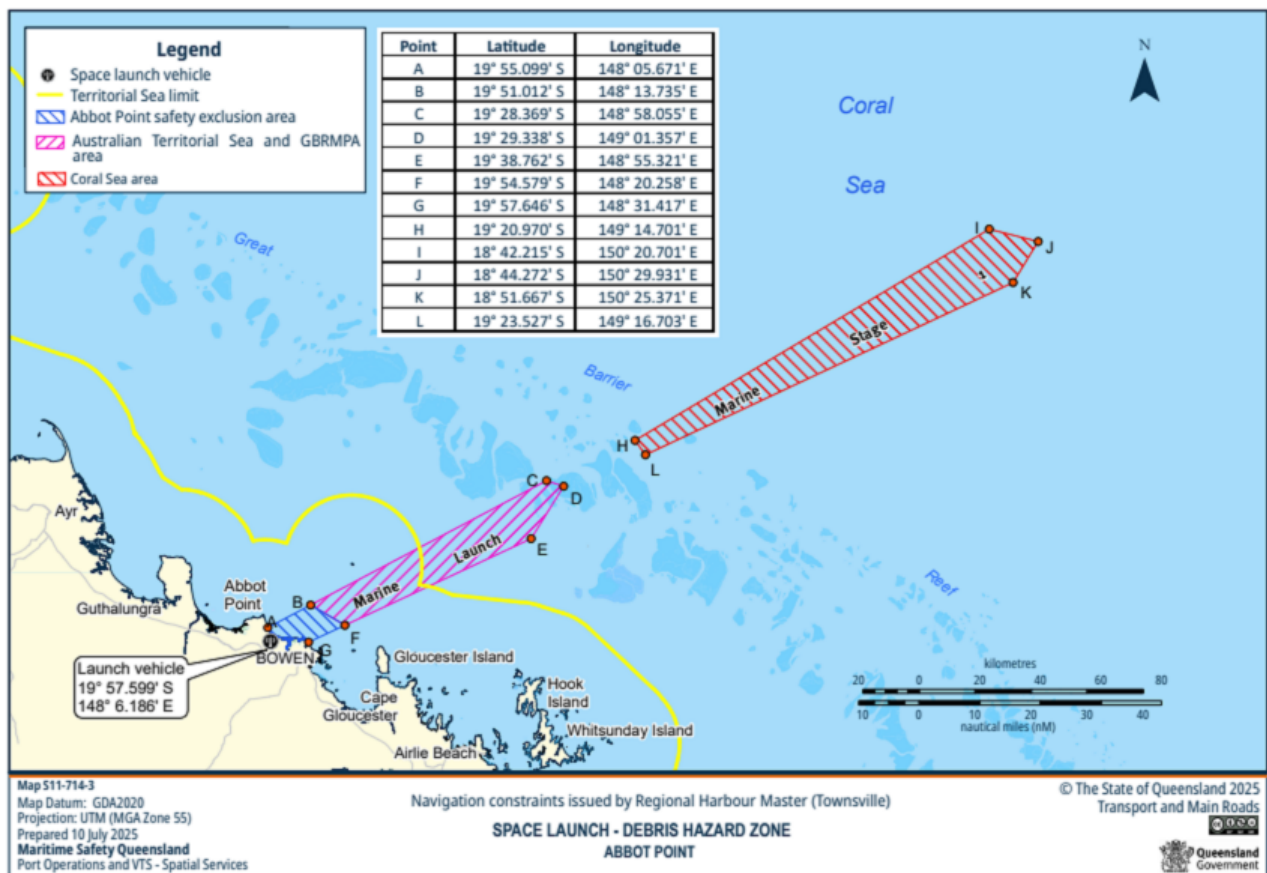


Chart temporarily affected - Aus 255 - Aus 268 - Aus 825 - Aus 826 - Aus 4602 (INT 602) - Aus 4603 (INT 603) - Aus 4604 (INT 604)

662(T)/2025 AUSTRALIA - QUEENSLAND - Arlington Reef - Light buoy off station

Maritime Safety Queensland Notice 309(T)/2025

The starboard lateral light buoy, *Fl.G.2-5s* (16° 41'.73 S 145° 56'.95 E), is off station.

Mariners are advised to navigate with caution in the area.

Chart temporarily affected - Aus 830

663(T)/2025 AUSTRALIA - QUEENSLAND - Boyd Point to False Pera Head - Scientific instruments
Maritime Safety Queensland Notice 338(T)/2025

Special light buoys, *Fl. Y. 3s*, exist in the following positions:

12° 53'.15 S 141° 39'.87 E
12° 54'.51 S 141° 37'.78 E
12° 56'.86 S 141° 35'.97 E
12° 57'.56 S 141° 34'.66 E
13° 00'.16 S 141° 34'.54 E
13° 05'.64 S 141° 36'.00 E.

An unlit special buoy exists in position 12° 56'.41 S 141° 26'.87 E.

Chart temporarily affected - Aus 4 - Aus 301

664(T)/2025 AUSTRALIA - QUEENSLAND - Cape Bowling Green - Light buoy restored
Former Notice - 23(T)/2025 is cancelled
Maritime Safety Queensland

Cancel this notice on receipt.

Chart formerly affected - Aus 827

665(P)/2025 AUSTRALIA - QUEENSLAND - Old Reef - Rock
XOCEAN

An uncharted rock, with least depth 42m, has been reported in position 19° 26'.39 S 148° 05'.46 E.

Mariners are advised to navigate with caution in the area.

Charts will updated in due course.

Chart which will be affected - Aus 826

666(T)/2025 AUSTRALIA - NORTHERN TERRITORY - Darwin - Military exercise; live firing completed
Former Notice - 612(T)/2025 is cancelled
Department of Defence

Cancel this notice on receipt.

Chart formerly affected - Aus 309 - Aus 315 - Aus 316 - Aus 318

667(T)/2025 AUSTRALIA - NORTHERN TERRITORY - Darwin - Dredging operations
Northern Territory Government Notice 83(T)/2025

Dredge Ngurunderi and support vessels are conducting dredging operations in the vicinity of position 12° 30'.06 S 130° 53'.64 E.

A submerged pipeline marked by special light buoys, *Q. Y.*, and a lit floating pontoon exist between the dredge and position 12° 29'.40 S 130° 53'.52 E.

Mariners are advised to navigate with caution in the area.

Chart temporarily affected - Aus 26

668(T)/2025 AUSTRALIA - NORTHERN TERRITORY - Emu Reefs - Obstruction
Northern Territory Government Notice 26/2025

A ghost net exists in position 13° 47'.70 S 129° 27'.54 E.

Mariners are advised to navigate with caution in the area.

Chart temporarily affected - Aus 316

669(T)/2025 AUSTRALIA - TIMOR SEA - Margaret Harries Banks - Survey operations

Revelare Hydrospatial

Survey vessel *7-Oceans* is conducting survey operations in an area bounded by the following positions:

10° 24'.23 S 128° 37'.84 E
 10° 16'.32 S 128° 50'.52 E
 10° 34'.47 S 129° 02'.39 E
 11° 02'.06 S 128° 19'.80 E
 11° 17'.04 S 128° 15'.48 E
 11° 10'.16 S 127° 40'.58 E
 11° 03'.71 S 127° 39'.06 E
 10° 28'.89 S 128° 12'.45 E
 10° 16'.64 S 128° 32'.95 E.

Tide gauges marked by special light buoys, *Fl. Y. 1·5s*, exist in the following positions:

11° 07'.3 S 127° 36'.3 E
 10° 53'.6 S 127° 50'.3 E
 10° 45'.3 S 127° 59'.7 E
 10° 31'.5 S 128° 12'.0 E
 10° 22'.7 S 128° 27'.3 E
 10° 08'.1 S 128° 50'.3 E
 10° 19'.6 S 128° 57'.0 E
 10° 32'.0 S 128° 39'.7 E
 10° 43'.0 S 128° 23'.5 E
 10° 53'.1 S 128° 11'.9 E
 11° 02'.3 S 128° 01'.3 E
 11° 15'.6 S 127° 49'.0 E
 11° 21'.7 S 128° 05'.8 E
 11° 12'.2 S 128° 20'.0 E
 11° 00'.8 S 128° 24'.2 E
 10° 51'.4 S 128° 38'.4 E
 10° 44'.0 S 128° 50'.1 E
 10° 35'.7 S 129° 03'.7 E.

Mariners are advised to navigate with caution in the area.

Chart temporarily affected - Aus 309 - Aus 310 - Aus 311 - Aus 315

670(T)/2025 AUSTRALIA - WESTERN AUSTRALIA - Bandy Creek Boat Harbour - Light beacon damaged and unlit

Department of Transport WA Notice 6506/2025

The light beacon, *Fl. G. 5s No1* (33° 50'.01 S 121° 55'.95 E), is damaged and unlit.

Chart temporarily affected - Aus 119

671(T)/2025 AUSTRALIA - WESTERN AUSTRALIA - Barrow Island - Subsea operations completed westwards

Former Notice - 103(T)/2025 is cancelled

DOF Australia

Cancel this notice on receipt.

Chart formerly affected - Aus 328

672(T)/2025 AUSTRALIA - WESTERN AUSTRALIA - Browse Island - Subsea operations northwestwards
McDermott Australia

Vessel *LV108* is conducting subsea operations in an area bounded by the following positions:

14° 01'.23 S 123° 04'.32 E
14° 01'.19 S 123° 10'.04 E
13° 59'.93 S 123° 20'.02 E
13° 49'.86 S 123° 20'.02 E
13° 48'.33 S 123° 14'.90 E
13° 48'.52 S 123° 11'.67 E.

Mariners are advised to navigate with caution in the area. 2·5M clearance requested.

Chart temporarily affected - Aus 319 - Aus 320 - Aus 322

673(T)/2025 AUSTRALIA - WESTERN AUSTRALIA - Dampier - Harbour works
Pilbara Ports Authority Notice D15/2025

Harbour works are in progress in an area bounded by the following positions:

20° 37'.06 S 116° 44'.87 E
20° 36'.90 S 116° 44'.87 E
20° 36'.90 S 116° 44'.93 E
20° 37'.06 S 116° 44'.93 E.

Entry into the area is prohibited unless authorised by the primary contractor, Clough. Any arrivals or departures from the area must be reported to Dampier VTS along with confirmation that permission has been obtained.

Mariners are advised to navigate with caution in the area.

Chart temporarily affected - Aus 57 - Aus 59

674(T)/2025 AUSTRALIA - WESTERN AUSTRALIA - Delambre Island - Survey operations eastwards
Discovery Marine

On or about 3 August 2025, survey vessel *Outer Limit* will be conducting survey operations in an area bounded by the following positions:

20° 22'.74 S 117° 31'.07 E
20° 23'.78 S 117° 22'.84 E
20° 25'.70 S 117° 08'.23 E
20° 25'.70 S 116° 58'.18 E
20° 23'.93 S 116° 54'.80 E
20° 21'.84 S 116° 51'.43 E
20° 20'.57 S 116° 49'.87 E
20° 17'.27 S 116° 49'.87 E
20° 07'.54 S 117° 03'.39 E
20° 07'.54 S 117° 37'.37 E.

Tide gauges marked by special light buoys, *Fl. Y. 2s*, will be deployed in the following positions:

20° 17'.2 S 116° 49'.8 E
20° 17'.2 S 117° 03'.7 E
20° 17'.1 S 117° 13'.1 E
20° 14'.5 S 117° 22'.7 E
20° 14'.6 S 117° 33'.9 E
20° 22'.7 S 117° 31'.1 E
20° 23'.7 S 117° 22'.8 E
20° 23'.8 S 117° 13'.2 E
20° 25'.5 S 117° 04'.6 E
20° 24'.5 S 116° 58'.1 E
20° 20'.9 S 116° 49'.8 E
20° 08'.0 S 116° 54'.3 E
20° 07'.9 S 117° 03'.7 E
20° 07'.9 S 117° 14'.7 E
20° 07'.8 S 117° 27'.2 E
20° 07'.8 S 117° 36'.7 E.

Mariners are advised to navigate with caution in the area.

Chart temporarily affected - Aus 55 - Aus 57 - Aus 326 - Aus 327

675(T)/2025 AUSTRALIA - WESTERN AUSTRALIA - Legendre Island - Subsea operations northwards
Technip FMC

On or about 25 July 2025, vessel *Deep Orient* will be conducting subsea installation activities in the vicinity of position 19° 26'.12 S 116° 28'.59 E

Mariners are advised to navigate with caution in the area.

Chart temporarily affected - Aus 327

676(T)/2025 AUSTRALIA - WESTERN AUSTRALIA - Montebello Islands - Scientific instrument northwestwards
Fugro

A special light buoy, *Fl(5)Y. 20s*, exists in position 19° 51'.33 S 114° 35'.48 E.

Chart temporarily affected - Aus 328

677(T)/2025 AUSTRALIA - WESTERN AUSTRALIA - Montebello Islands - Subsea operations northwestwards
Former Notice - 374(T)/2025 is cancelled
 Woodside Energy Ltd

Vessel *Deep Orient* is conducting subsea installation activities and anchor pre-lay activities in an area bounded by the following positions:

20° 00'.52 S 115° 11'.74 E
 20° 03'.46 S 115° 03'.60 E
 20° 06'.93 S 115° 00'.40 E
 20° 10'.34 S 115° 01'.72 E
 20° 02'.13 S 115° 13'.89 E
 19° 55'.83 S 115° 14'.68 E
 19° 55'.53 S 115° 12'.55 E.

Mariners are advised to navigate with caution in the area.

Chart temporarily affected - Aus 328 - Aus 742

678(P)/2025 AUSTRALIA - WESTERN AUSTRALIA - Roebuck Bay - Shoaling westwards
 Australian Hydrographic Office

Latest survey indicates shoaler depths than those charted may exist in an area bounded by the following positions:

18° 11'.04 S 121° 55'.21 E
 18° 10'.67 S 121° 52'.15 E
 18° 01'.61 S 121° 55'.81 E
 18° 02'.48 S 121° 57'.98 E.

Mariners are advised to navigate with caution in the area.

Products will be updated in due course.

Chart which will be affected - Aus 50 - Aus 324

679(T)/2025 AUSTRALIA - WESTERN AUSTRALIA - Thevenard Island - Light buoy altered
 Department of Transport and Major Infrastructure WA

The east cardinal light buoy, Q(3)10s (21° 26'.40 S 115° 03'.46 E), has been temporarily altered to FI(3)15s 5M.

Chart temporarily affected - Aus 64 - Aus 743

680(T)/2025 AUSTRALIA - WESTERN AUSTRALIA - Yampi Sound - Comber Rock - Light buoy relit
Former Notice - 685(T)/2024 is cancelled
 Kimberley Ports Authority

Cancel this notice on receipt.

Chart formerly affected - Aus 40 - Aus 732 - Aus 733

681(T)/2025 AUSTRALIA - VICTORIA - Ninety Mile Beach - Safety zone eastwards
 NOPSEMA

On 1 August 2025, a 500m radius safety zone will exist centred on position 38° 13'.90 S 148° 13'.54 E.

Chart temporarily affected - Aus 357

682(T)/2025 AUSTRALIA - VICTORIA - Ninety Mile Beach - Drill rig eastwards
Former Notice - 503(T)/2025 is cancelled
 Australian Maritime Safety Authority Auscoast Warning 207/2025, MODU *Valaris 107*

Drill rig *Valaris 107* is conducting drilling operations in position 38° 10'.84 S 148° 35'.60 E.

Chart temporarily affected - Aus 357

683(T)/2025 AUSTRALIA - VICTORIA - Ninety Mile Beach - Scientific instruments southwards

Former Notice - 633(T)/2025 is cancelled

RPS Group

Special light buoys, Q(5)Y.20s, exist in positions 38° 33'.74 S 147° 12'.50 E and 38° 38'.63 S 147° 14'.62 E.

Chart temporarily affected - Aus 357 - Aus 487

684(T)/2025 AUSTRALIA - BASS STRAIT - Safety zone

NOPSEMA

On 1 August 2025, a 500m radius safety zone will exist centred on position 39° 57'.74 S 145° 15'.37 E.

Chart temporarily affected - Aus 487

685(T)/2025 AUSTRALIA - TASMANIA - Port Dalrymple - Barrel Rock - Beacon destroyed

Marine and Safety Tasmania Notice M256(T)/2025

The port lateral beacon (41° 03'.99 S 146° 47'.48 E) has been destroyed; a special buoy exists in situ.

Mariners are advised to navigate with caution in the area.

Chart temporarily affected - Aus 167

686(T)/2025 AUSTRALIA - TASMANIA - Robbins Island to Rocky Cape - Scientific instruments northwards

Maritime and Safety Tasmania Notice M260(T)/2025

Special light buoys, Fl.Y.3s, exist in the following positions:

40° 33'.39 S 145° 06'.24 E

40° 33'.39 S 145° 05'.96 E

40° 33'.39 S 145° 34'.29 E

40° 38'.30 S 145° 35'.46 E

40° 38'.40 S 145° 35'.22 E.

Chart temporarily affected - Aus 487 - Aus 790

687(T)/2025 AUSTRALIA - TASMANIA - Spring Bay - Paddys Point to Alginat Bay - Pipe laying operations

Marine and Safety Tasmania Notice M261(T)/2025

Works are in progress to install a pipeline between Paddys Point (42° 32'.31 S 147° 55'.51 E) and Alginat Bay (42° 32'.50 S 147° 54'.85 E).

Mariners are advised to navigate with caution in the area.

Chart temporarily affected - Aus 797

II

HYDROGRAPHIC REPORTS

NIL

To accompany Australian Notice to Mariners 643/2025

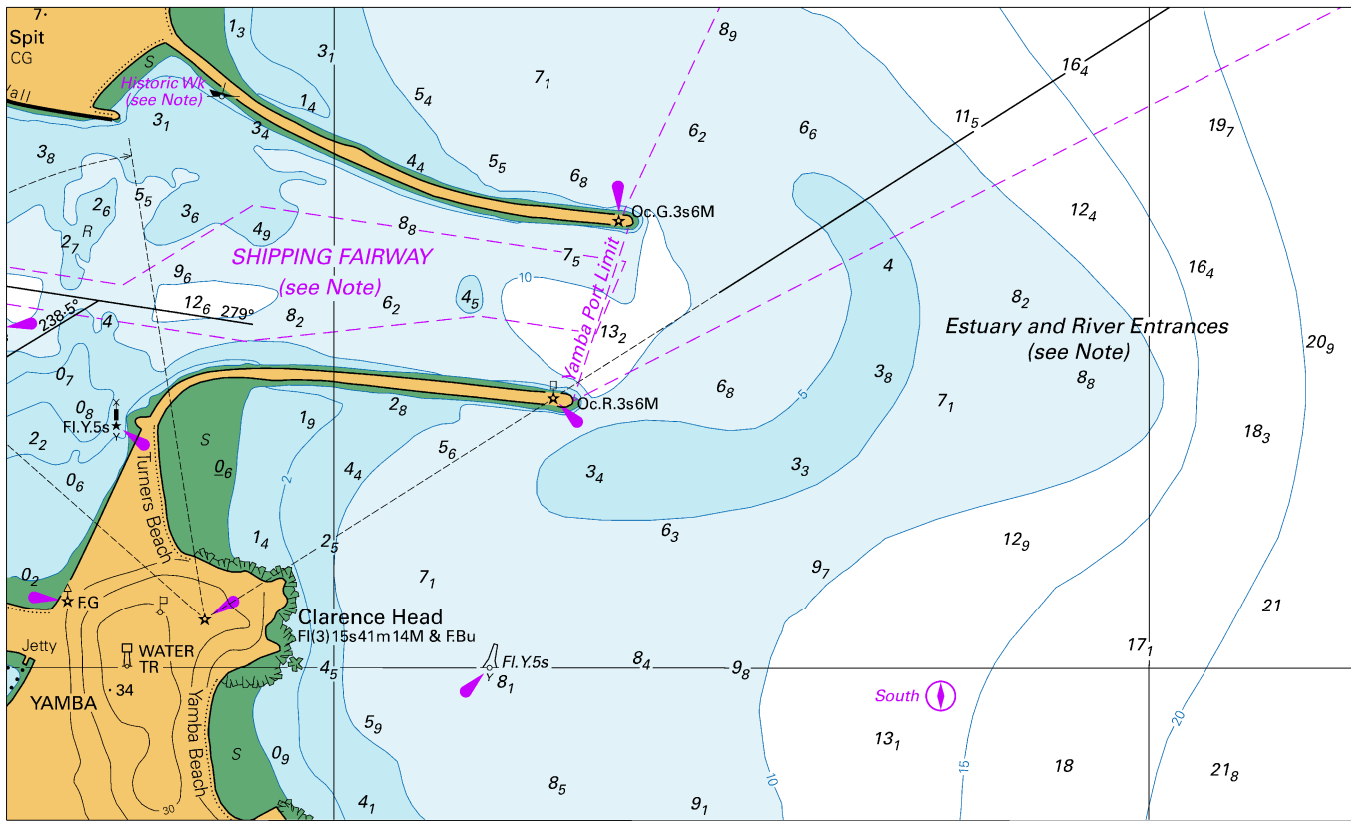
HISTORIC WRECK

The site of an historic wreck is protected from unauthorised interference. For details see Mariners Handbook for Australian

Waters AHP 20.

Note for chart Aus 222

To accompany Australian Notice to Mariners 643/2025

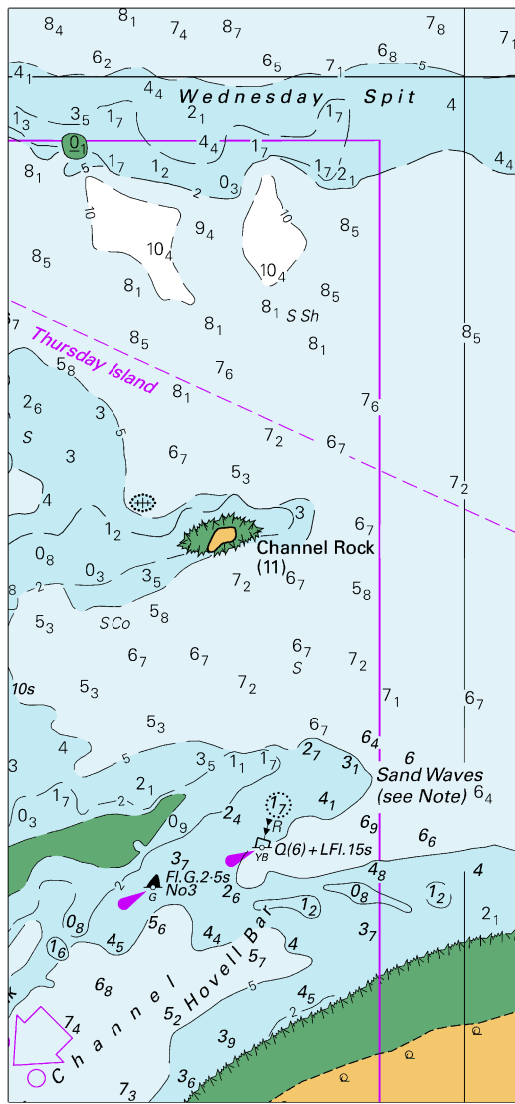


Block for chart Aus 222

© Commonwealth of Australia 2025

(178.0 x 107.6mm)

To accompany Australian Notice to Mariners 648/2025

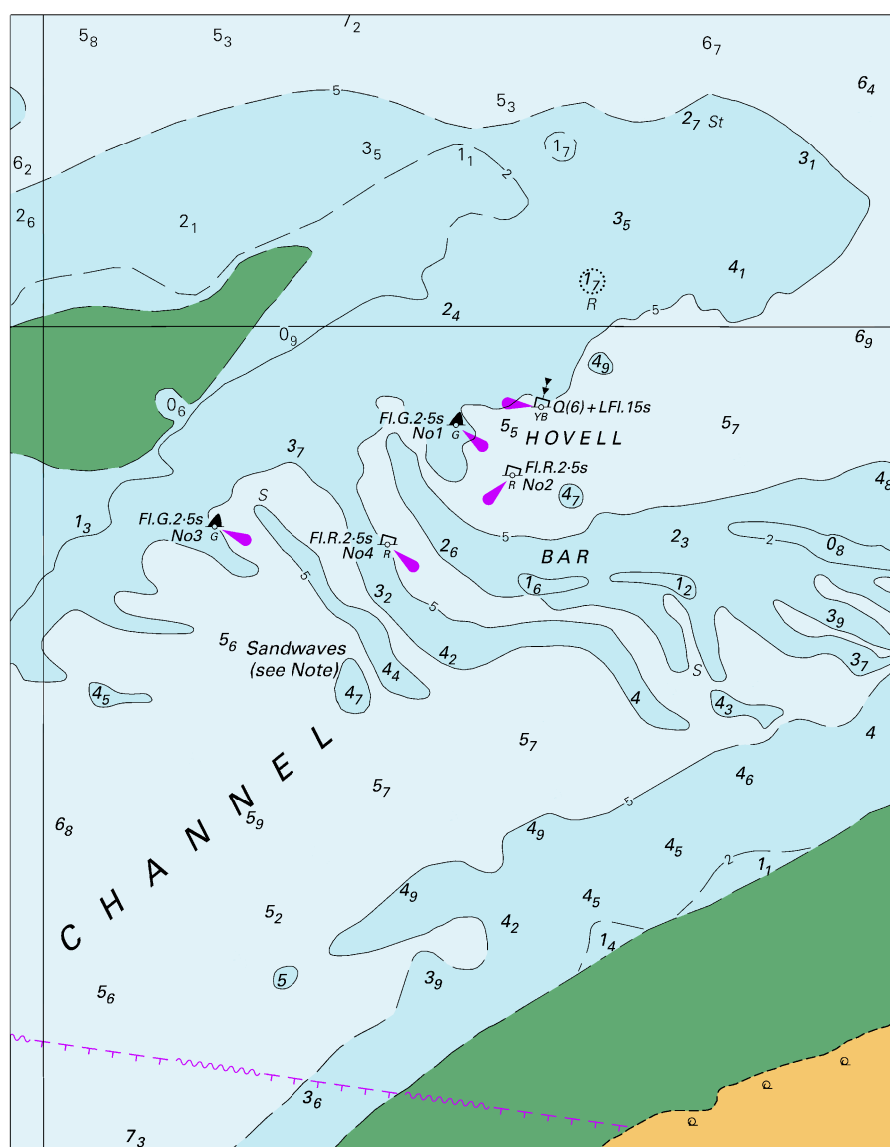


Block for chart Aus 293

(67.2 x 144.7mm)

© Commonwealth of Australia 2025

To accompany Australian Notice to Mariners 648/2025

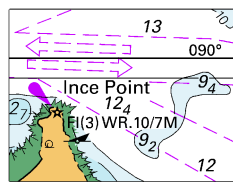


Block for chart Aus 299

© Commonwealth of Australia 2025

(116.7 x 150.0mm)

To accompany Australian Notice to Mariners 649/2025



Block for Chart Aus 700 (30.2 x 22.7mm)
© Commonwealth of Australia 2025

Block for chart Aus 310

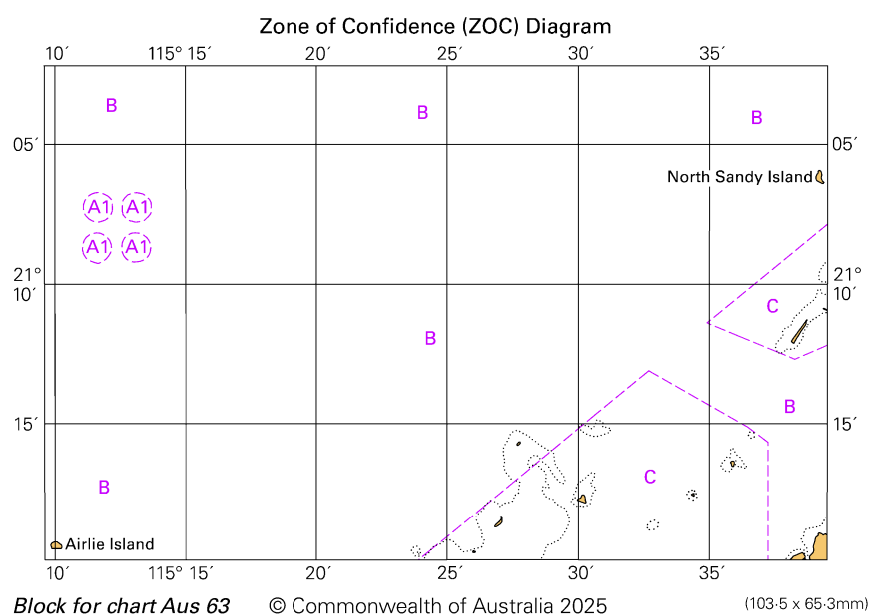
© Commonwealth of Australia 2025

248.3 x 85.0mm

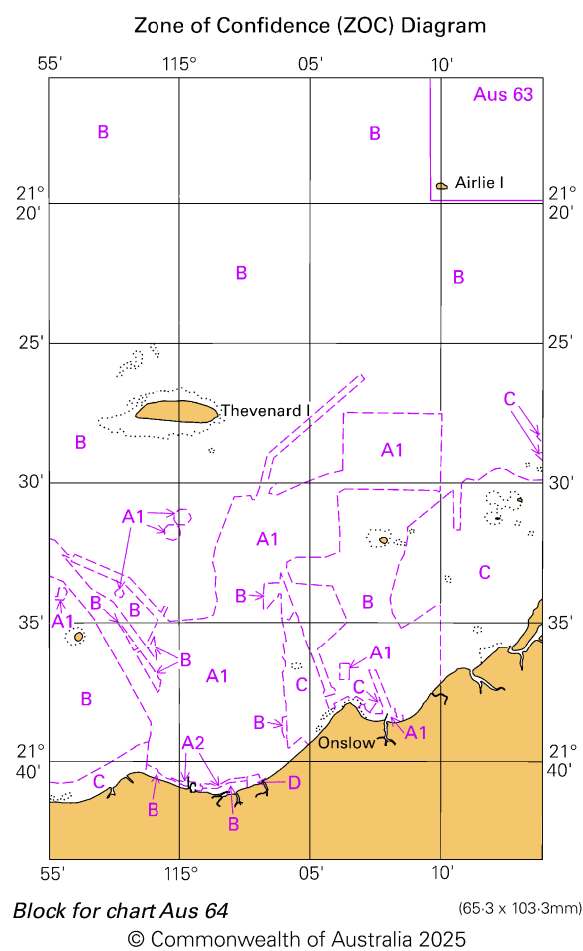
© Commonwealth of Australia 2025

(248.3 × 85.0mm)

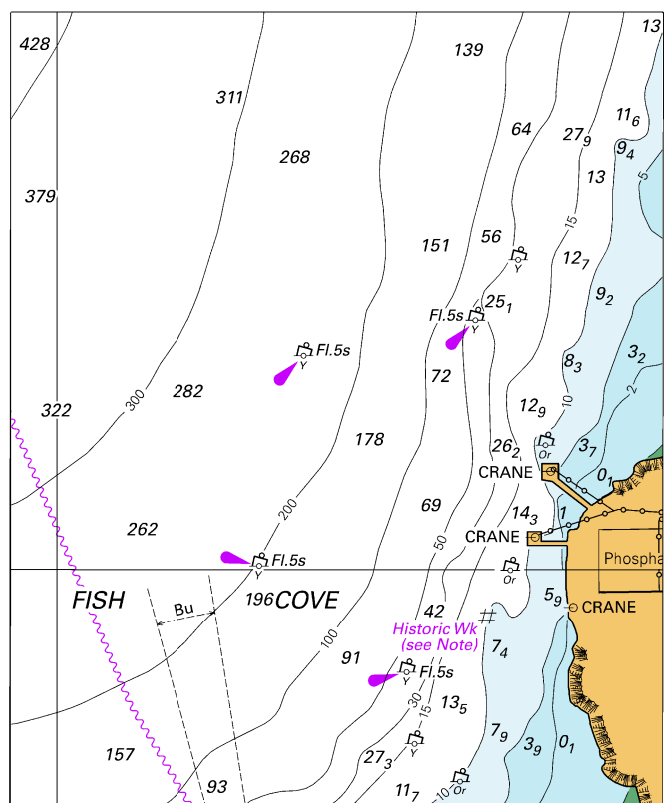
To accompany Australian Notice to Mariners 654/2025



To accompany Australian Notice to Mariners 654/2025



To accompany Australian Notice to Mariners 656/2025

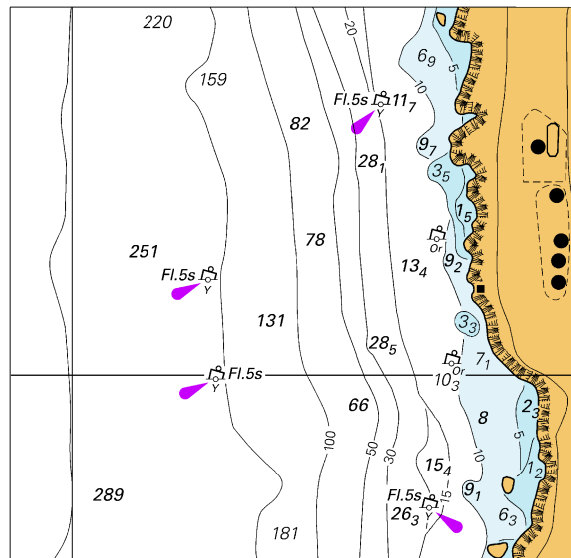


Block A for chart Aus 920

(86.3 x 104.8mm)

© Commonwealth of Australia 2025

To accompany Australian Notice to Mariners 656/2025

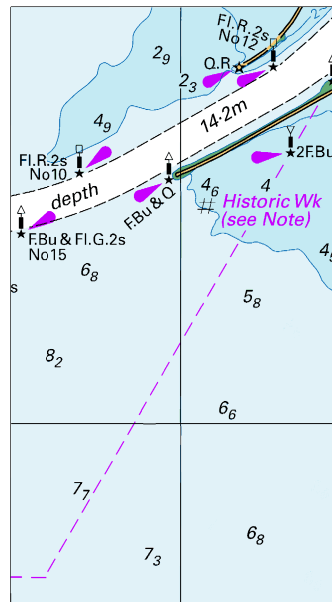


Block B for chart Aus 920

(74.7 x 73.3mm)

© Commonwealth of Australia 2025

To accompany Australian Notice to Mariners 657/2025



Block for chart Aus 130 (43.4 x 79.0mm)
© Commonwealth of Australia 2025