

TEMPORARY AND PRELIMINARY NOTICES
In force on 24 January 2025

NEW SOUTH WALES

709(T)/2016 AUSTRALIA - NEW SOUTH WALES - Cape Byron - Obstructions eastwards
HMAS *Gascoyne*

Obstructions exist in positions 28° 36'.20 S 153° 44'.30 E and 28° 36'.95 S 153° 44'.02 E.

Chart temporarily affected - Aus 813

604(T)/2020 AUSTRALIA - NEW SOUTH WALES - Jervis Bay - Hyams Beach - Light buoy
Australian Maritime Warfare Centre

A special light buoy, *Fl.Y.5s*, exists in position 35° 06'.23 S 150° 42'.85 E.

Chart temporarily affected - Aus 807 - Aus 808

997(T)/2020 AUSTRALIA - NEW SOUTH WALES - Merimbula Bay to Broulee Island - Scientific instruments
Transport for NSW

Special light buoys, *F(5)Y.20s*, exist in the following positions:

35° 50'.9 S 150° 11'.3 E

35° 52'.8 S 150° 09'.7 E

36° 54'.5 S 149° 55'.0 E.

Chart temporarily affected - Aus 806 - Aus 807

105(T)/2021 AUSTRALIA - NEW SOUTH WALES - Port Jackson - Berrys Bay - Jetties ruined
Transport for NSW , NSW Roads and Maritime Services

Jetties and piers are ruined, and partially submerged obstructions may exist in an area bounded by the coast and the following positions:

33° 50'.70 S 151° 11'.69 E

33° 50'.70 S 151° 11'.76 E

33° 50'.67 S 151° 11'.85 E

33° 50'.63 S 151° 11'.84 E.

A west cardinal light beacon, *Q(9)15s*, exists in position 33° 50'.59 S 151° 11'.50 E.

Mariners are advised to navigate with caution in the area.

Chart temporarily affected - Aus 200

880(T)/2021 AUSTRALIA - NEW SOUTH WALES - Cape Byron - Light buoy off station northwards
Byron Bay Deep Sea Fishing Club

The special light buoy, *Fl.Y.5s* (28° 35'.40 S 153° 38'.11 E), is off station.

Chart temporarily affected - Aus 813

61(T)/2022 AUSTRALIA - NEW SOUTH WALES - Port Jackson - Chowder Bay - Scientific instruments
Former Notice - 524(T)/2021 is cancelled
Department of Defence

Subsurface scientific instruments, 2m above seabed, exist in the following positions:

33° 50.42' S 151° 15.42' E

33° 50.39' S 151° 15.39' E

33° 50.38' S 151° 15.43' E.

The area will be marked by buoys.

Mariners are advised to navigate with caution in the area.

Chart temporarily affected - Aus 200

727(T)/2022 AUSTRALIA - NEW SOUTH WALES - Tathra to Seal Rocks - Obstructions

Transport for NSW Notice SY2028

Shipping containers and debris may exist along the coast and in offshore waters between Tathra (36° 43'.55 S 149° 59'.46 E) and Seal Rocks (32° 27'.86 S 152° 33'.22 E).

Mariners are advised to navigate with caution in the area.

Chart temporarily affected - Aus 489 - Aus 806 - Aus 807 - Aus 808 - Aus 809 - Aus 810 - Aus 4601 (INT 601) - Aus 4602 (INT 602)

133(T)/2023 AUSTRALIA - NEW SOUTH WALES - Crabbes Creek Beach - Wreck eastwards

Australian Maritime Safety Authority

A wreck exists in position 28° 29'.43 S 153° 38'.52 E.

Chart temporarily affected - Aus 813

608(T)/2023 AUSTRALIA - NEW SOUTH WALES - Botany Bay - Kurnell to La Perouse - Harbour works

Port Authority of New South Wales Notice 16/2023

Works associated with the construction of the Kamay Ferry Wharves are in progress in the vicinity of positions 33° 59'.21 S 151° 13'.68 E and 34° 00'.14 S 151° 13'.01 E.

An exclusion zone exists in the works area and will be marked by special buoys.

Anchoring is prohibited in the vicinity of position 34° 00'.28 S 151° 12'.83 E.

Mariners are advised to navigate with caution in the area.

Chart temporarily affected - Aus 198

701(T)/2023 AUSTRALIA - NEW SOUTH WALES - Cape Banks to Cabbage Tree Bay - Scientific instruments eastwards

Sydney Institute of Marine Science

Subsurface scientific instruments exist as follows:

<i>Position</i>	<i>Metres below surface</i>
33° 47'.92 S 151° 17'.71 E	9
33° 48'.05 S 151° 18'.33 E	24
33° 49'.59 S 151° 17'.89 E	28
33° 49'.85 S 151° 17'.64 E	28
33° 50'.05 S 151° 17'.48 E	27
33° 50'.25 S 151° 17'.30 E	26.5
33° 53'.74 S 151° 17'.30 E	27
33° 53'.91 S 151° 17'.75 E	41
33° 54'.17 S 151° 18'.16 E	58
33° 54'.43 S 151° 18'.59 E	63
33° 54'.69 S 151° 19'.05 E	64
33° 54'.96 S 151° 19'.51 E	64
33° 55'.21 S 151° 19'.93 E	71
33° 55'.46 S 151° 20'.36 E	70
33° 55'.72 S 151° 20'.79 E	80
33° 55'.98 S 151° 21'.24 E	80
33° 56'.25 S 151° 21'.71 E	82
33° 56'.49 S 151° 22'.16 E	87
33° 56'.75 S 151° 22'.59 E	90
33° 57'.06 S 151° 23'.02 E	98
33° 57'.32 S 151° 23'.47 E	119.

Chart temporarily affected - Aus 200 - Aus 489 - Aus 809

808(T)/2023 AUSTRALIA - NEW SOUTH WALES - Clarence River - Scientific instrument

NSW Department of Planning and Environment

A special light buoy, *Fl.Y.5s*, exists in position 29° 25'.31 S 153° 21'.32 E.

Chart temporarily affected - Aus 222

105(T)/2024 AUSTRALIA - NEW SOUTH WALES - Green Bluff - Scientific instruments eastwards
Sydney Institute of Marine Science

Subsurface scientific instruments exist as follows:

<i>Position</i>	<i>Metres below surface</i>
30° 12'.27 S 153° 16'.54 E	43
30° 12'.27 S 153° 17'.05 E	50
30° 12'.31 S 153° 15'.46 E	23
30° 12'.44 S 153° 14'.95 E	30
30° 12'.49 S 153° 14'.43 E	31
30° 12'.55 S 153° 13'.92 E	35
30° 12'.58 S 153° 13'.40 E	34
30° 12'.64 S 153° 12'.90 E	25
30° 12'.67 S 153° 10'.48 E	16
30° 12'.70 S 153° 12'.41 E	26
30° 12'.73 S 153° 11'.91 E	24
30° 12'.77 S 153° 11'.40 E	23
30° 12'.81 S 153° 10'.87 E	20.

Chart temporarily affected - Aus 812

106(T)/2024 AUSTRALIA - NEW SOUTH WALES - Montague Island - Scientific instruments
Sydney Institute of Marine Science

Subsurface scientific instruments exist as follows:

<i>Position</i>	<i>Metres below surface</i>
36° 15'.28 S 150° 14'.20 E	49
36° 15'.40 S 150° 13'.08 E	7
36° 15'.47 S 150° 12'.58 E	33
36° 15'.52 S 150° 12'.04 E	38
36° 15'.59 S 150° 11'.50 E	31
36° 15'.66 S 150° 10'.96 E	30
36° 15'.71 S 150° 10'.43 E	29
36° 15'.75 S 150° 09'.15 E	12
36° 15'.77 S 150° 09'.97 E	29.

Chart temporarily affected - Aus 806 - Aus 807

107(T)/2024 AUSTRALIA - NEW SOUTH WALES - Seal Rocks - Scientific instruments
Sydney Institute of Marine Science

Subsurface scientific instruments exist as follows:

<i>Position</i>	<i>Metres below surface</i>
32° 27'.16 S 152° 33'.47 E	35
32° 27'.16 S 152° 32'.75 E	28
32° 27'.45 S 152° 32'.94 E	26
32° 28'.45 S 152° 33'.80 E	38
32° 28'.81 S 152° 34'.11 E	42.

Chart temporarily affected - Aus 810

740(T)/2024 AUSTRALIA - NEW SOUTH WALES - Port Jackson - Garden Island - Dredging operations
Port Authority of New South Wales Notice 21/2024

The dredge *Sydney*, barge *Pelican* and support vessel *Arana* are conducting dredging operations in areas bounded by the coast and the following positions:

33° 51'.94 S 151° 13'.30 E
33° 51'.65 S 151° 13'.47 E
33° 51'.47 S 151° 13'.40 E
33° 51'.45 S 151° 13'.72 E
33° 51'.47 S 151° 13'.70 E
and;

33° 51'.58 S 151° 13'.81 E
33° 51'.61 S 151° 13'.84 E
33° 51'.66 S 151° 13'.79 E
33° 51'.63 S 151° 13'.77 E.

Mariners are advised to navigate with caution in the area.

Chart temporarily affected - Aus 200

741(T)/2024 AUSTRALIA - TASMAN SEA - Tasman Basin - Light buoy off station
Australian Bureau of Meteorology

The special light buoy, *Fl.Y.2s* (44° 47'.40 S 161° 42'.03 E), is off station.

Chart temporarily affected - Aus 4601 (INT 601)

861(T)/2024 AUSTRALIA - NEW SOUTH WALES - Point Perpendicular - Fish aggregating device off station eastwards
Department of Primary Industries and Regional Development

The special light buoy, *Fl.Y.5s FAD (Sep-Jun)* (31° 39'.59 S 152° 56'.23 E), is off station and in position 31° 40'.64 S 152° 55'.85 E.

Chart temporarily affected - Aus 811

900(T)/2024 AUSTRALIA - NEW SOUTH WALES - Port Stephens - Scientific instrument
Former Notice - 750(T)/2023 is cancelled
Manly Hydraulics Laboratory

A special light buoy, *Fl.Y.3s*, exists in position 32° 41'.77 S 152° 05'.10 E.

Chart temporarily affected - Aus 209

963(T)/2024 AUSTRALIA - NEW SOUTH WALES - Botany Bay to Port Kembla - Survey operations
Ocean Infinity Pty Ltd

On or about 16 December 2024, vessel *7 Oceans* will be conducting survey operations in an area bounded by the following positions:

34° 00'.06 S 151° 19'.10 E
34° 00'.11 S 151° 36'.84 E
34° 36'.15 S 151° 13'.71 E
34° 36'.15 S 151° 04'.95 E
34° 33'.18 S 150° 55'.24 E
34° 13'.50 S 151° 00'.65 E
34° 03'.45 S 151° 12'.06 E.

Subsurface scientific instruments exist on the seabed in the following positions:

33° 59'.5 S 151° 19'.3 E
33° 59'.5 S 151° 30'.4 E
34° 08'.3 S 151° 23'.9 E
34° 09'.3 S 151° 08'.3 E
34° 16'.6 S 151° 16'.3 E
34° 19'.0 S 150° 57'.9 E
34° 26'.9 S 151° 11'.7 E
34° 31'.2 S 150° 55'.4 E
34° 36'.9 S 151° 07'.0 E.

Two moorings will be deployed at each of the subsurface locations within 200m of the position. Special light buoys may exist in the vicinity of the above positions.

Mariners are advised to navigate with caution in the area.

Chart temporarily affected - Aus 195 - Aus 198 - Aus 489 - Aus 808

965(T)/2024 AUSTRALIA - NEW SOUTH WALES - Eden - Fish aggregating device off station northeastwards
Department of Primary Industries and Regional Development

The special light buoy, *Fl. Y. 5s (Nov-May)* (36° 58'.79 S 150° 14'.73 E), is off station and in position 37° 00'.52 S 150° 15'.11 E.

Chart temporarily affected - Aus 806

QUEENSLAND

470(T)/2017 AUSTRALIA - QUEENSLAND - North Gardner Bank - Foul ground
Maritime Safety Queensland Notice 24/2017

A foul ground exists in position 24° 56'.30 S 153° 26.90 E.

Chart temporarily affected - Aus 816

523(P)/2017 AUSTRALIA - QUEENSLAND - Great Barrier Reef - Joist Reef to Hydrographers Passage - Shoaling
LADS Flight

Latest survey shows shoaler depths than those charted may exist in an area bounded by the following positions:

19° 27'.1 S 149° 38'.9 E

20° 12'.2 S 149° 39'.1 E

20° 12'.2 S 150° 18'.5 E

19° 39'.2 S 150° 18'.5 E

Charts will updated in due course.

Chart which will be affected - Aus 821 - Aus 824 - Aus 825

27(T)/2018 AUSTRALIA - QUEENSLAND - Brisbane - Redcliffe Jetty - Harbour works
Maritime Safety Queensland

Harbour works are in progress at the head of Redcliffe Jetty (27° 13'.567 S 153° 07'.047 E)

All vessels will display appropriate lights and symbols.

Mariners are advised to navigate with caution

Chart temporarily affected - Aus 236

72(T)/2018 AUSTRALIA - QUEENSLAND - Fitzroy Island - Bird Rock - Light buoys
Former Notice - 29(T)/2018 is cancelled
Maritime Safety Queensland Notice 503(T)/2017

Two special light buoys, *Fl. Y. 2-5s* exist in position 16° 55'.43 S 145° 59'.43 E.

Chart temporarily affected - Aus 830

213(T)/2018 AUSTRALIA - QUEENSLAND - Bribie Island - South Point - Shoaling
Maritime Safety Queensland

Shoaling exists at the southern end of Bribie Island, with a least depth of *0.5m* in position 27° 06'.18 S 153° 11'.24 E.

Mariners are advised to navigate with caution in the area.

Chart temporarily affected - Aus 236

488(T)/2019 AUSTRALIA - QUEENSLAND - Karumba - Wreck northwards
Maritime Safety Queensland Notice 188(T)/2019

A stranded wreck marked by a special light buoy, *Fl. Y. 2-5s*, exists in position 17° 15'.36 S 140° 53'.89 E.

Chart temporarily affected - Aus 303

548(P)/2019 AUSTRALIA - QUEENSLAND - Hydrographers Passage - Shoaling
LADS Flight

Latest survey shows shoaler depths than those charted may exist in an area bounded by the following positions:

20° 36'.52 S 150° 04'.39 E

20° 30'.63 S 150° 17'.03 E

20° 23'.93 S 150° 16'.63 E
20° 06'.15 S 150° 04'.79 E
20° 11'.27 S 150° 00'.18 E
20° 21'.88 S 150° 04'.70 E
20° 27'.57 S 150° 09'.82 E
20° 32'.65 S 150° 01'.91 E.

Mariners are advised to navigate with caution in the area.

Charts will be updated in due course.

Chart which will be affected - Aus 821 - Aus 824

1049(P)/2020 AUSTRALIA - TORRES STRAIT - Deliverance Island - Shoaling
HMAS *Albany*

Latest survey shows shoaling exists as follows:

<i>Depth</i>	<i>Position</i>
1.1m	9° 32'.89 S 141° 27'.03 E
3.6m	9° 32'.22 S 141° 27'.73 E.

Mariners are advised to navigate with caution in the area.

Charts will be updated in due course.

Chart which will be affected - Aus 842

21(T)/2021 AUSTRALIA - CORAL SEA - Middleton Reef - Unexploded ordnance
Parks Australia

An exclusion zone exists in an area bounded by the following positions:

29° 27'.12 S 159° 02'.92 E
29° 26'.58 S 159° 02'.92 E
29° 26'.58 S 159° 03'.55 E
29° 27'.12 S 159° 03'.55 E.

Unexploded ordnance may exist in the area and mariners are advised to navigate with caution.

Chart temporarily affected - Aus 618

64(T)/2021 AUSTRALIA - QUEENSLAND - Gladstone - Auckland Point Wharves - Harbour works
Maritime Safety Queensland 360(T)/2019

Construction of a mooring dolphin is in progress off the eastern end of berth No 4 (23° 50'.02 S 151° 15'.91 E) by vessel *AMS Shine* and the barge *M1201* and support vessels.

Vessels and hazards will display appropriate lights and shapes.

Vessels will monitor VHF Ch 13.

Mariners are advised to navigate with caution in the area.

Chart temporarily affected - Aus 245

247(T)/2021 AUSTRALIA - QUEENSLAND - Cape Ferguson - Scientific instrument
Australian Institute of Marine Science

A special spar light buoy, Q(4)Y.18s, exists in position 19° 16'.52 S 147° 03'.84 E.

Chart temporarily affected - Aus 256

249(P)/2021 AUSTRALIA - QUEENSLAND - Holt Island to Hexham Island - Shoaling
LADS Flight

Latest survey shows shoaler depths than those charted may exist in areas bounded by the following positions:
22° 11'.75 S 150° 22'.51 E

22° 11'.90 S 150° 22'.99 E
22° 13'.77 S 150° 22'.25 E
22° 13'.51 S 150° 21'.60 E;
and
22° 00'.22 S 150° 23'.51 E
22° 01'.04 S 150° 23'.61 E
22° 02'.68 S 150° 18'.70 E
22° 01'.44 S 150° 16'.29 E
22° 00'.19 S 150° 21'.01 E.

Mariners are advised to navigate with caution in the area.

Charts will be updated in due course.

Chart which will be affected - Aus 260 - Aus 367 - Aus 822

337(P)/2021 AUSTRALIA - TORRES STRAIT - Boigu Island - Shoaling

HMAS *Leeuwin*

Latest survey shows shoaler depths than those charted may exist in areas bounded by the following positions:

9° 14'.38 S 142° 15'.82 E
9° 15'.78 S 142° 19'.88 E
9° 15'.49 S 142° 20'.00 E
9° 13'.58 S 142° 16'.26 E;
and
9° 12'.49 S 142° 15'.50 E
9° 12'.33 S 142° 13'.73 E
9° 13'.16 S 142° 13'.24 E
9° 13'.20 S 142° 15'.21 E.

Mariners are advised to navigate with caution in the area.

Charts will be updated in due course.

Chart which will be affected - Aus 841

738(T)/2021 AUSTRALIA - QUEENSLAND - Fitzroy River - Middle Channel - Scientific instrument

Maritime Safety Queensland Notice 31/2021

A special light buoy, Q.Y, exists in position 23° 28'.23 S 150° 56'.37 E.

Chart temporarily affected - Aus 265

741(T)/2021 AUSTRALIA - QUEENSLAND - Fraser Island - Elbow Point - Shoaling

Navionics

Depths of less than 1m have been reported in an area bounded by the following positions:

25° 44'.40 S 152° 59'.29 E
25° 44'.71 S 152° 59'.37 E
25° 44'.89 S 153° 00'.30 E
25° 44'.66 S 153° 00'.38 E
25° 44'.40 S 152° 59'.77 E.

Mariners are advised to navigate with caution in the area.

Charts will be updated in due course.

Chart temporarily affected - Aus 817

980(T)/2021 AUSTRALIA - QUEENSLAND - Fitzroy River - South Channel - Scientific instrument

Former Notice - 661(T)/2016 is cancelled

Maritime Safety Queensland Notice 400(T)/2021

A special light buoy, *Fl.Y.4s*, exists in position 23° 30'.23 S 150° 45'.83 E.

Chart temporarily affected - Aus 819

1025(T)/2021 AUSTRALIA - TORRES STRAIT - Great North East Channel - Coconut Island - Scientific instrument

Former Notice - 486(T)/2021 is cancelled
Maritime Safety Queensland Notice 427(T)/2021

A special light buoy, *Fl(5)Y.20s*, exists in position 10° 03'.18 S 143° 03'.12 E.

Chart temporarily affected - Aus 839

27(P)/2022 AUSTRALIA - TORRES STRAIT - Boigu Island - Shoaling

Australian Institute of Marine Science

The drying area (9° 15'.51 S 142° 06'.09 E) extends 0.27M northwest to position 9° 15'.31 S 142° 05'.91 E.

The reef (9° 11'.96 S 142° 10'.56 E) extends 0.27M south to position 9° 12'.23 S 142° 10'.56 E.

Mariners are advised to navigate with caution in the area.

Charts will be updated in due course.

Chart which will be affected - Aus 841

388(P)/2022 AUSTRALIA - QUEENSLAND - Bundaberg - Burnett River - Shoaling

Australian Hydrographic Office

Latest survey indicates shoaler depths than those charted may exist in the Burnett River between Long Reach and Millaquin Reach.

The most significant shoals are as follows:

<i>Position</i>	<i>Depth</i>
24° 49'.11 S 152° 22'.08 E	-0.1m
24° 49'.94 S 152° 22'.31 E	0.8m.

Mariners are advised to navigate with caution in the area.

Charts will be updated in due course.

Chart which will be affected - Aus 242

422(T)/2022 AUSTRALIA - QUEENSLAND - Palm Beach - Light buoy off station

Maritime Safety Queensland Notice 220(T)/2022

The special light buoy, *Fl.Y.5s* (28° 06'.34 S 153° 28'.42 E), is off station.

Chart temporarily affected - Aus 814

490(T)/2022 AUSTRALIA - QUEENSLAND - Gold Coast Seaway - Light buoy destroyed eastwards

Maritime Safety Queensland Notice 266/2022

The special light buoy, *Fl.Y.4s* (27° 54'.93 S 153° 27'.59 E), has been destroyed and has sunk in position.

Mariners are advised to navigate with caution in the area.

Chart temporarily affected - Aus 814

736(T)/2022 AUSTRALIA - QUEENSLAND - Moreton Bay - Scarborough - Mooring buoy

Maritime Safety Queensland Notice 419(T)/2022

An unlit blue mooring buoy exists in position 27° 11'.00 S 153° 05'.90 E.

Chart temporarily affected - Aus 236

788(P)/2022 AUSTRALIA - CORAL SEA - Diamond Islets - Shoaling

LADS Flight

Shoaler depths than those charted exist in the vicinity of the Diamond Islets.

Charts will updated in due course.

Chart which will be affected - Aus 614

877(T)/2022 AUSTRALIA - QUEENSLAND - Brisbane River - Hamilton Reach - Wreck
Maritime Safety Queensland Notice 172(T)/2022

A wreck marked by a special light buoy, *Fl.Y.2.5s*, exists in position 27° 26'.43 S 153° 03'.28 E.

Mariners are advised to navigate with caution in the area.

Chart temporarily affected - Aus 237

891(T)/2022 AUSTRALIA - QUEENSLAND - Moreton Bay - Spitfire Channel - Obstruction
Maritime Safety Queensland Notice 257(T)/2021

An obstruction exists on the seabed in position 27° 03'.63 S 153° 17'.32 E.

Mariners are advised to navigate with caution in the area.

Chart temporarily affected - Aus 236 - Aus 814 - Aus 815

893(T)/2022 AUSTRALIA - QUEENSLAND - Moreton Bay - Spitfire Channel - Light beacon unreliable
Maritime Safety Queensland Notice 103(T)/2021

The light beacon, *Fl.Y.1.5s S1* (27° 02'.88 S 153° 15'.99 E), is unreliable.

Chart temporarily affected - Aus 236

946(T)/2022 AUSTRALIA - QUEENSLAND - Moreton Bay - Redcliffe - Light buoy unlit
Maritime Safety Queensland Notice 494(T)/2022

The starboard lateral light buoy, *Fl.G.4s* (27° 13'.23 S 153° 07'.27 E), is unlit.

Chart temporarily affected - Aus 236

1026(T)/2022 AUSTRALIA - QUEENSLAND - Upstart Bay - Obstructions
Maritime Safety Queensland

Obstructions on the seabed exist within a 1M radius of position 19° 44'.13 S 147° 40'.74 E.

Mariners area advised not to anchor or trawl in the area.

Chart temporarily affected - Aus 826

67(T)/2023 AUSTRALIA - QUEENSLAND - Townsville - Shoaling
Maritime Safety Queensland

Flooding and latest survey shows shoaler depths than those charted may exist in Ross River between positions 19° 15'.36 S 146° 50'.85 E and 19° 17'.00 S 146° 49'.51 E.

Mariners are advised to navigate with caution in the area.

Charts will be updated in due course.

Chart temporarily affected - Aus 256

68(T)/2023 AUSTRALIA - QUEENSLAND - Townsville - Obstructions
Maritime Safety Queensland Notice 24(T)/2023

Due to recent flooding, floating and submerged obstructions may exist in the coastal waters between Dunk Island (17° 56'.72 S 146° 09'.47 E) and Bowen (20° 00'.54 S 148° 17'.40 E).

Mariners are advised to navigate with caution in the area.

Chart temporarily affected - Aus 255 - Aus 256 - Aus 268 - Aus 825 - Aus 826 - Aus 827 - Aus 828 - Aus 829

99(T)/2023 AUSTRALIA - QUEENSLAND - Brisbane River - Lytton and Quarantine Reach - Obstruction; light buoy
Maritime Safety Queensland Notice 37(T)/2023

An obstruction marked by a special light buoy, *Fl.Y.2.5s*, exists in position 27° 24'.74 S 153° 08'.90 E.

Chart temporarily affected - Aus 237

357(T)/2023 AUSTRALIA - QUEENSLAND - Gold Coast Seaway - Wreck eastwards
Australian Maritime Safety Authority Auscoast Warning 95/2023

A wreck exists in the vicinity of position 27° 53'.8 S 153° 38'.5 E.

Chart temporarily affected - Aus 814

360(T)/2023 AUSTRALIA - QUEENSLAND - Hinchinbrook Channel - Light buoy off station
Maritime Safety Queensland Notice 168(T)/2023

The starboard lateral light buoy, *Fl.G.4.3s No15* (18° 29'.63 S 146° 17'.30 E), is off station.

Chart temporarily affected - Aus 259

361(T)/2023 AUSTRALIA - QUEENSLAND - Hinchinbrook Island - Missionary Bay - Light beacon destroyed
Former Notice - 319(T)/2023 is cancelled
Maritime Safety Queensland Notice 169(T)/2023

The special light beacon, *Fl.Y.3s* (18° 15'.20 S 146° 11'.79 E), has been destroyed; a special light buoy, *Fl.Y.3s*, exists in situ.

Mariners are advised to navigate with caution in the area.

Chart temporarily affected - Aus 259 - Aus 828

362(T)/2023 AUSTRALIA - QUEENSLAND - Orpheus Island - Light buoy removed
Former Notice - 275(T)/2023 is cancelled
Australian Institute of Marine Science

The black and yellow light buoy, *Fl.Y.2.5s* (18° 34'.35 S 146° 29'.87 E), has been temporarily removed for maintenance.

Chart temporarily affected - Aus 827 - Aus 828

398(T)/2023 AUSTRALIA - QUEENSLAND - Caloundra Head - Light unlit
Maritime Safety Queensland Notice 187(T)/2023

The light, *LFl.WR.10s 31m 8M* (26° 48'.13 S 153° 09'.04 E), is unlit.

Chart temporarily affected - Aus 236 - Aus 815

484(T)/2023 AUSTRALIA - QUEENSLAND - Fitzroy River - Middle Channel - Scientific instrument
Maritime Safety Queensland Notice 229(T)/2023

A special light buoy, *Fl.Y.5s*, exists in position 23° 27'.85 S 150° 56'.60 E.

Chart temporarily affected - Aus 265 - Aus 819

753(T)/2023 AUSTRALIA - QUEENSLAND - Brisbane River - Hamilton Reach - Lights unlit
Maritime Safety Queensland Notice 390(T)/2023

The light, *Iso.R.2s (F.Y Day) No13RS* (27° 26'.99 S 153° 05'.49 E), is unlit.

The light beacon, *Q.R (F Day)* (27° 26'.96 S 153° 05'.41 E), is unlit. A temporary port lateral light, *Fl.R.4s*, has been established on the beacon.

Mariners are advised to navigate with caution in the area.

Chart temporarily affected - Aus 237

813(T)/2023 AUSTRALIA - QUEENSLAND - Moreton Bay - Bramble Bay - Pine River - Obstruction; light buoy
Maritime Safety Queensland Notice 398(T)/2023

An obstruction marked by a special light buoy, *Fl.Y.2·5s*, exists in position 27° 16'.48 S 153° 04'.19 E.

Chart temporarily affected - Aus 236

17(T)/2024 AUSTRALIA - TORRES STRAIT - Yorke Islands - Scientific instrument
Maritime Safety Queensland Notice 592(T)/2023

A special light buoy, *Fl(5)Y.20s*, exists in position 9° 44'.70 S 143° 24'.29 E.

Chart temporarily affected - Aus 377 - Aus 840

108(T)/2024 AUSTRALIA - QUEENSLAND - Cape Flattery - Scientific instrument
Maritime Safety Queensland Notice 34(T)/2024

A special light buoy, *Fl.Y.2·5s*, exists in position 14° 59'.43 S 145° 20'.93 E.

Chart temporarily affected - Aus 831 - Aus 832

111(T)/2024 AUSTRALIA - QUEENSLAND - Skardon River - Obstruction
Maritime Safety Queensland Notice 40(T)/2024

A lost anchor marked by a special buoy exists in position 11° 42'.35 S 141° 51'.37 E.

Mariners are advised to navigate with caution in the area.

Chart temporarily affected - Aus 301

250(T)/2024 AUSTRALIA - QUEENSLAND - Great Sandy Strait - Light buoys
Former Notice - 219(T)/2024 is cancelled
Maritime Safety Queensland Notice 146/2017, 145(T)/2021, 70/2020

Light buoys exist as follows:

<i>Number</i>	<i>Position</i>	<i>Characteristics</i>
S3	25° 12'.70 S 152° 54'.75 E	<i>Fl.G.2·5s</i>
NG1	25° 20'.20 S 153° 01'.40 E	<i>Fl.G.2·5s</i>

Chart temporarily affected - Aus 817

324(T)/2024 AUSTRALIA - QUEENSLAND - Abbot Point - Bald Hill - Lights altered
Maritime Safety Queensland Notice 175(T)/2024

The light, *WR & Fl.4s 56m 12M (F Day)* (19° 53'.14 S 148° 04'.55 E), has been temporarily altered to *Fl.4s (F Day)*.

Chart temporarily affected - Aus 255 - Aus 826

407(T)/2024 AUSTRALIA - QUEENSLAND - Karumba - Light removed
Maritime Safety Queensland Notice 246(T)/2024

The front leading day light (17° 26'.82 S 140° 45'.52 E) has been temporarily removed.

Chart temporarily affected - Aus 6 - Aus 303

408(T)/2024 AUSTRALIA - QUEENSLAND - North Stradbroke Island - Point Lookout - Scientific instruments
Sydney Institute of Marine Science

Subsurface scientific instruments exist as follows:

<i>Position</i>	<i>Metres below surface</i>
27° 25'.29 S 153° 35'.08 E	50
27° 25'.34 S 153° 34'.57 E	46
27° 25'.37 S 153° 34'.08 E	45
27° 25'.42 S 153° 33'.31 E	36
27° 25'.44 S 153° 33'.31 E	28.

Chart temporarily affected - Aus 236 - Aus 814

409(T)/2024 AUSTRALIA - QUEENSLAND - One Tree Island to Heron Island - Scientific instruments
Sydney Institute of Marine Science

Subsurface scientific instruments exist as follows:

<i>Position</i>	<i>Metres below surface</i>
23° 25'.97 S 151° 55'.61 E	19
23° 26'.20 S 151° 58'.84 E	10
23° 26'.38 S 151° 53'.98 E	9
23° 26'.85 S 151° 54'.74 E	15
23° 28'.26 S 151° 56'.82 E	16
23° 28'.26 S 151° 56'.82 E	8
23° 28'.34 S 151° 58'.69 E	15
23° 28'.76 S 152° 04'.96 E	12
23° 29'.52 S 152° 02'.75 E	16
23° 30'.37 S 152° 02'.43 E	8
23° 30'.52 S 152° 03'.33 E	13
23° 30'.83 S 152° 05'.63 E	18.

Chart temporarily affected - Aus 819

445(T)/2024 AUSTRALIA - QUEENSLAND - Port Douglas - Island Point - Light sectors unreliable
Australian Maritime Safety Authority Auscoast Warning 172/2024

Light sectors emanating from the light, *Fl(4)WR.20s 90m 11/9M* (16° 28'.92 S 145° 28'.02 E), should not be relied upon for safe navigation.

Chart temporarily affected - Aus 830

481(T)/2024 AUSTRALIA - QUEENSLAND - Gladstone - South Trees Inlet - Harbour works
Maritime Safety Queensland Notice 291(T)/2024

Works on the bridge (23° 51'.5 S 151° 18'.3 E) are in progress. Scaffolding has reduced the vertical clearance of the bridge to 1m.

Mariners are advised to navigate with caution in the area.

Chart temporarily affected - Aus 245 - Aus 246

528(T)/2024 AUSTRALIA - QUEENSLAND - Moreton Bay - Chain Banks - Scientific instrument
Maritime Safety Queensland Notice 323(T)/2024

A special light buoy, *Fl.Y.4s*, exists in position 27° 25'.79 S 153° 18'.38 E.

Chart temporarily affected - Aus 236

530(T)/2024 AUSTRALIA - QUEENSLAND - Weipa - Albatross Bay - Mooring buoy
Maritime Safety Queensland

A lit mooring buoy, *Fl.Y.4s*, exists in position 12° 39'.01 S 141° 43'.09 E.

Chart temporarily affected - Aus 4 - Aus 301

561(T)/2024 AUSTRALIA - QUEENSLAND - Moreton Bay - North East Channel - Light buoy off station
Maritime Safety Queensland Notice 338(T)/2024

The port lateral light buoy, *Fl.R.2-5s NE2* (26° 56'.95 S 153° 20'.08 E), is off station.

Chart temporarily affected - Aus 236 - Aus 814 - Aus 815

596(T)/2024 AUSTRALIA - QUEENSLAND - Cleveland Bay - Scientific instruments

Former Notice - 249(T)/2024 is cancelled
Maritime Safety Queensland Notice 387(T)/2024

Special light buoys, *Fl.Y.2-5s*, exist in the following positions:

19° 06'.45 S 146° 32'.48 E
19° 07'.34 S 146° 52'.92 E
19° 09'.32 S 146° 52'.10 E
19° 11'.81 S 146° 49'.07 E
19° 12'.79 S 146° 47'.55 E
19° 13'.58 S 146° 56'.98 E
19° 14'.80 S 146° 48'.90 E.

Mariners are advised to navigate with caution in the area.

Chart temporarily affected - Aus 256 - Aus 827

604(T)/2024 AUSTRALIA - TORRES STRAIT - Richardson Reef - Cook Reef - Scientific instruments

CSIRO , Maritime Safety Queensland Notice 377(T)/2024

Subsurface scientific instruments exist as follows:

<i>Position</i>	<i>Metres below surface</i>
10° 09'.57 S 143° 02'.39 E	23.2
10° 24'.34 S 141° 07'.25 E	27.6.

Chart temporarily affected - Aus 700 - Aus 839 - Aus 842

678(T)/2024 AUSTRALIA - QUEENSLAND - Gladstone - South Trees Point - Scientific instruments

Maritime Safety Queensland Notice 430(T)/2024

Special light buoys, *Fl.Y*, exist in positions 23° 51'.36 S 151° 19'.32 E and 23° 50'.98 S 151° 17'.19 E.

Chart temporarily affected - Aus 245 - Aus 246

711(T)/2024 AUSTRALIA - QUEENSLAND - Yorkeys Knob - Shoaling; light buoy

Maritime Safety Queensland Notice 444(T)/2024

Shoaling exists at the entrance to the marina and is marked by a special light buoy, *Fl.Y.2-5s*, in position 16° 48'.02 S 145° 43'.01 E.

Mariners are advised to navigate with caution in the area.

Chart temporarily affected - Aus 262

743(T)/2024 AUSTRALIA - QUEENSLAND - Cairns - Trinity Inlet - Wreck

Maritime Safety Queensland Notice 467(T)/2024

A stranded wreck marked by a special light buoy, *Fl.Y.2-5s*, exists in position 16° 56'.90 S 145° 47'.19 E.

Mariners are advised to navigate with caution in the area.

Chart temporarily affected - Aus 262

780(T)/2024 AUSTRALIA - QUEENSLAND - Great Barrier Reef - Hydrographers Passage to Holmes Reefs - Survey operations

EGS Survey Pty Ltd

On or about 22 October 2024, vessel *PMG Emerald* will be conducting survey operations in areas bounded by the following

positions:

17° 23'.1 S 147° 16'.2 E
17° 23'.1 S 148° 33'.3 E
16° 32'.5 S 148° 33'.3 E
16° 32'.5 S 147° 16'.2 E;
and
19° 23'.7 S 149° 57'.2 E
18° 59'.6 S 150° 44'.7 E
18° 23'.6 S 150° 24'.3 E
18° 47'.8 S 149° 36'.8 E.

Mariners are advised to navigate with caution in the area.

Chart temporarily affected - Aus 615 - Aus 829 - Aus 4602 (INT 602) - Aus 4603 (INT 603) - Aus 4604 (INT 604)

821(T)/2024 AUSTRALIA - QUEENSLAND - Gladstone - North Channel to North Passage Island - Scientific instruments

Maritime Safety Queensland Notice 518(T)/2024

Special light buoys, *Fl.Y.4-5s*, exist in the following positions:

23° 46'.97 S 151° 18'.38 E
23° 48'.30 S 151° 12'.56 E
23° 47'.07 S 151° 11'.13 E
23° 45'.92 S 151° 10'.87 E.

Mariners are advised to navigate with caution in the area.

Chart temporarily affected - Aus 245

862(T)/2024 AUSTRALIA - QUEENSLAND - Brisbane River - Hamilton Reach - Light buoys; harbour works

Former Notice - 818(T)/2024 is cancelled

Maritime Safety Queensland Notice 474(T)/2024, 530(T)/2024

Light buoys, which mark a construction zone, exist as follows:

<i>Position</i>	<i>Remarks</i>
27° 26'.51 S 153° 04'.01 E	<i>Fl.Y.2s</i>
27° 26'.47 S 153° 03'.73 E	<i>Fl.Y.3s</i>

A port lateral light buoy, *Fl.R.2s*, exists in position 27° 26'.46 S 153° 03'.88 E. The light buoy marks the edge of the navigation channel to the north of the construction zone.

Mariners are advised to navigate with caution in the area.

Chart temporarily affected - Aus 237

866(T)/2024 AUSTRALIA - TORRES STRAIT - Cook Reef - Scientific instruments southwards

Fugro

Tide gauges exist in positions 10° 27'.06 S 141° 20'.32 E and 10° 28'.40 S 141° 41'.78 E.

Mariners are advised to navigate with caution in the area.

Chart temporarily affected - Aus 700 - Aus 842

901(T)/2024 AUSTRALIA - QUEENSLAND - Brisbane River - Hamilton Reach - Scientific instrument

Maritime Safety Queensland Notice 565(T)/2024

A special light buoy, *Fl.Y.3s*, exists in position 27° 26'.49 S 153° 03'.48 E.

Mariners are advised to navigate with caution in the area.

Chart temporarily affected - Aus 237

904(T)/2024 AUSTRALIA - QUEENSLAND - Great Keppel Island - Scientific instrument

Maritime Safety Queensland Notice 553(T)/2024

A scientific instrument exists on the seabed in position 23° 10'.91 S 150° 55'.75 E.

Chart temporarily affected - Aus 819 - Aus 820

905(T)/2024 AUSTRALIA - QUEENSLAND - Moreton Bay - Deception Bay - Wreck

Maritime Safety Queensland Notice 552(T)/2024

A stranded wreck marked by a special light buoy, *Fl.Y.2.5s*, exists in position 27° 11'.88 S 153° 05'.88 E.

Mariners are advised to navigate with caution in the area.

Chart temporarily affected - Aus 236

968(T)/2024 AUSTRALIA - QUEENSLAND - Duyfken Point - Scientific instrument westwards

Maritime Safety Queensland Notice 578(T)/2024

A special light buoy, *Fl(5)Y.20s*, exists in position 12° 10'.16 S 140° 16'.80 E.

Chart temporarily affected - Aus 4603 (INT 603)

973(T)/2024 AUSTRALIA - QUEENSLAND - Moreton Bay - Spitfire Channel - Buoy

Maritime Safety Queensland Notice 584(T)/2024

An orange buoy marking an underwater obstruction exists in position 27° 03'.60 S 153° 17'.28 E.

Mariners are advised to navigate with caution in the area.

Chart temporarily affected - Aus 236

23(T)/2025 AUSTRALIA - QUEENSLAND - Cape Bowling Green - Light buoy off station

Maritime Safety Queensland Notice 606(T)/2024

The west cardinal light buoy, *Q(9)15s* (19° 17'.86 S 147° 22'.65 E), is off station; a special light buoy, *Fl.Y.2.5s*, exists in situ.

Mariners are advised to navigate west of the special light buoy and to navigate with caution in the area.

Chart temporarily affected - Aus 827

26(T)/2025 AUSTRALIA - QUEENSLAND - Great Keppel Island - Light beacon unlit

Maritime Safety Queensland Notice 603(T)/2024

The isolated danger light beacon, *Fl(2)6s* (23° 09'.21 S 150° 56'.31 E), is unlit.

Mariners are advised to navigate with caution in the area.

Chart temporarily affected - Aus 819 - Aus 820

28(T)/2025 AUSTRALIA - QUEENSLAND - Laguna Quays - Shoaling

Former Notice - 972(T)/2023 is cancelled

Maritime Safety Queensland

Shoaling exists within Laguna Quays Marina (20° 36'.0 S 148° 41'.0 E).

Mariners are advised to navigate with caution in the area.

Chart temporarily affected - Aus 252

32(T)/2025 AUSTRALIA - QUEENSLAND - Port of Airlie - Muddy Bay - Wreck

Maritime Safety Queensland Notice 2(T)/2025

A wreck marked by a special light buoy, *Fl.Y.2.5s*, exists in position 20° 16'.03 S 148° 43'.79 E.

Mariners are advised to navigate with caution in the area.

Chart temporarily affected - Aus 252 - Aus 253

98(T)/2025 AUSTRALIA - QUEENSLAND - Deception Bay - Light buoy
Maritime Safety Queensland NTM 010(T)/2025

A special light buoy, *Fl.Y.4s*, exists in position 27° 06'.63 S 153° 07'.32 E.

Chart temporarily affected - Aus 236

NORTHERN TERRITORY

183(T)/2022 INDIAN OCEAN - Christmas Island - Mooring buoy off station

L Mioceovich

The mooring buoy (10° 25'.92 S 105° 39'.5 E) is off station and is currently in position 10° 26'.48 S 105° 39'.45 E.

Chart temporarily affected - Aus 920

867(T)/2023 INDIAN OCEAN - Roo Rise - Light buoy off station

Australian Bureau of Meteorology

The special light buoy, *Fl. Y. 2s* (12° 19'.20 S 108° 30'.75 E), is off station.

Chart temporarily affected - Aus 4708 (INT 708) - Aus 4723 (INT 723)

893(T)/2023 AUSTRALIA - NORTHERN TERRITORY - Darwin - Mooring buoy off station

Sea Swift

The lit mooring buoy, *Fl. Y. 2.5s* (12° 25'.10 S 130° 47'.74 E), is off station.

Chart temporarily affected - Aus 25

904(T)/2023 INDIAN OCEAN - Cocos Islands - Light buoy

LINX

A special light buoy, *Fl. Y. 2.5s*, exists in position 12° 08'.65 S 96° 51'.95 E.

Chart temporarily affected - Aus 607

158(T)/2024 AUSTRALIA - TIMOR SEA - Evans Shoal - Subsea operations eastwards

Santos

On or about 18 February 2024, vessels will be conducting subsea operations in an area bound by the following positions:

9° 52'.72 S 130° 11'.86 E

9° 52'.69 S 130° 19'.18 E

9° 47'.26 S 130° 19'.16 E

9° 47'.29 S 130° 11'.84 E.

Mariners are advised to navigate with caution in the area.

Chart temporarily affected - Aus 310

369(T)/2024 AUSTRALIA - TIMOR SEA - Sahul Banks - FPSO unlit

Petrofac Australia

The FPSO (10° 36'.89 S 125° 59'.13 E) is unlit.

Chart temporarily affected - Aus 312

532(T)/2024 AUSTRALIA - NORTHERN TERRITORY - Apsley Strait - Medina Inlet - Light buoys off station

Former Notice - 293(T)/2024 is cancelled

Northern Territory Government Notice 11(T)/2024

The following light buoys are off station:

<i>Position</i>	<i>Remarks</i>
-----------------	----------------

11° 45'.85 S 130° 39'.80 E	<i>Fl. R. 4s</i>
----------------------------	------------------

11° 46'.36 S 130° 39'.99 E	<i>Fl. R. 4s</i>
----------------------------	------------------

11° 51'.65 S 130° 35'.07 E	<i>Fl. G. 4s.</i>
----------------------------	-------------------

Chart temporarily affected - Aus 23

565(T)/2024 AUSTRALIA - NORTHERN TERRITORY - Groote Eylandt - Milner Bay - Harbour works; exclusion zone; light unlit

Former Notice - 368(T)/2024 is cancelled
Northern Territory Government Notice 13/2024

Works are in progress to repair the main wharf. An exclusion zone exists in an area bounded by the following:

Position	Remarks
13° 51'.56 S 136° 25'.03 E	
13° 51'.67 S 136° 25'.03 E	
13° 51'.73 S 136° 25'.06 E	marked by special light buoy, <i>Fl.Y.2s</i>
13° 51'.80 S 136° 24'.96 E	marked by special light buoy, <i>Fl.Y.2s</i>
13° 51'.57 S 136° 24'.82 E	marked by special light buoy, <i>Fl.Y.2s</i>
13° 51'.51 S 136° 24'.92 E	marked by special light buoy, <i>Fl.Y.2s</i> .

Only vessels involved in construction activities, vessels under the control of Milner Port, the Director of Marine Safety and the NT Police are permitted to enter the area.

The light, *F.R* (13° 51'.55 S 136° 24'.92 E), is unlit.

Mariners are advised to navigate with caution in the area.

Chart temporarily affected - Aus 14

680(T)/2024 AUSTRALIA - NORTHERN TERRITORY - Darwin - Scientific instruments

Former Notice - 610(T)/2024 is cancelled
Northern Territory Government Notice 68(T)/2024, 69(T)/2024

Special light buoys, *Fl.Y.1-5s*, exist in the following positions:

12° 29'.50 S 130° 53'.75 E
12° 29'.67 S 130° 53'.80 E
12° 29'.67 S 130° 54'.15 E
12° 29'.42 S 130° 54'.14 E.

Special light buoys, *Fl.Y.4s*, exist in the following positions:

12° 29'.61 S 130° 53'.75 E
12° 29'.48 S 130° 54'.15 E.

Chart temporarily affected - Aus 26

713(T)/2024 AUSTRALIA - TIMOR SEA - Sahul Banks - Subsea operations southwards

Sapura Energy Australia

Vessel *Sapura Constructor* and a ROV is conducting subsea operations associated with the decommissioning of the Laminaria (10° 37'.81 S 126° 02'.05 E) and Corallina (10° 35'.45 S 125° 59'.19 E) fields.

Mariners are advised to navigate with caution in the area. 0.27M clearance requested.

Chart temporarily affected - Aus 312

870(T)/2024 AUSTRALIA - NORTHERN TERRITORY - Darwin to Shepparton Shoal - Pipe laying operations

Former Notice - 750(T)/2024 is cancelled
Fugro, Santos

Various vessels are conducting works associated with the installation of a pipeline adjacent to the existing pipeline, between positions 12° 31'.54 S 130° 51'.69 E and 12° 01'.40 S 129° 54'.46 E.

Vessels will monitor VHF Ch 10 and 16.

Mariners are advised to navigate with caution in the area.

Note: For e-notice users, please see full edition for map.

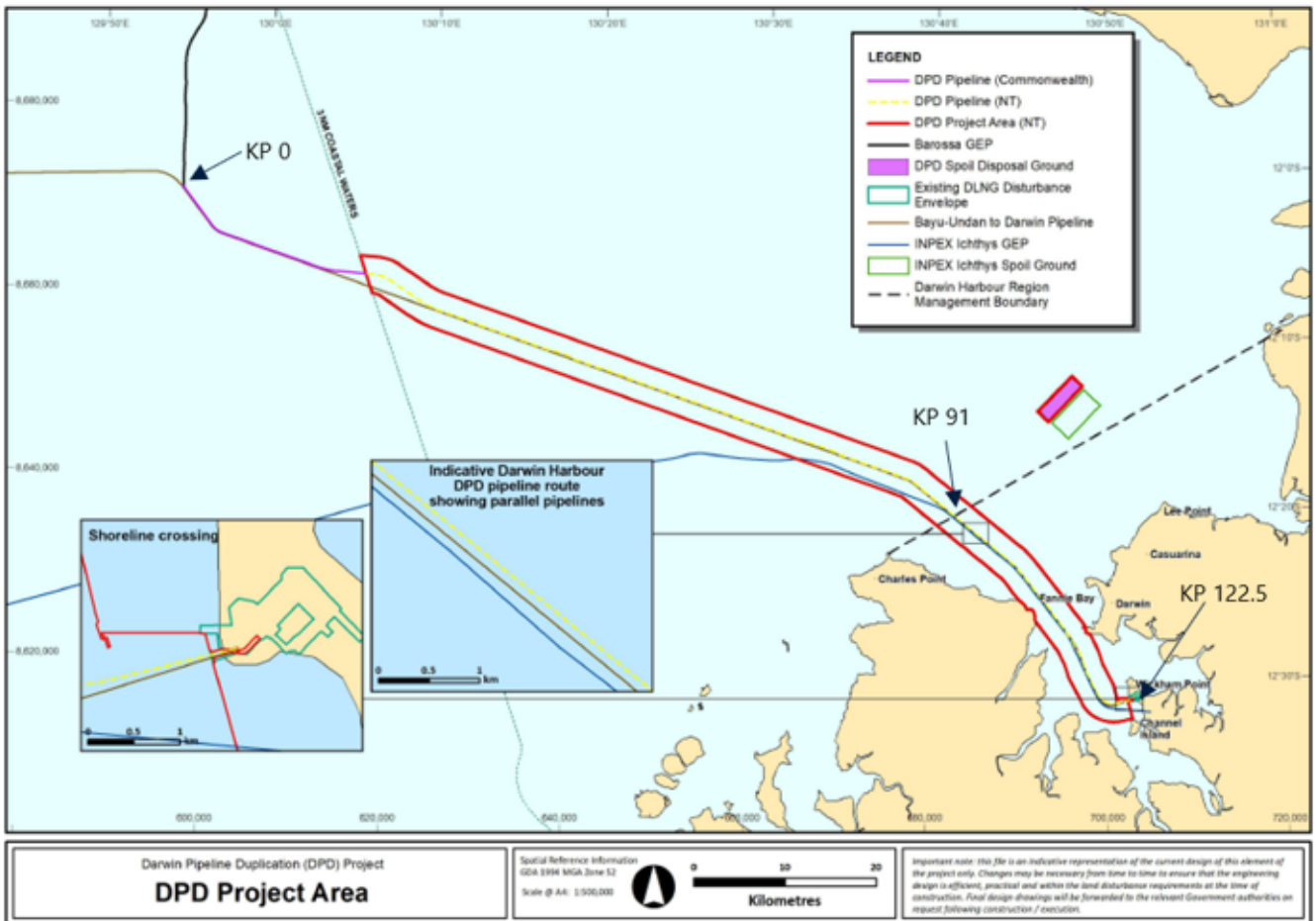


Chart temporarily affected - Aus 25 - Aus 26 - Aus 309 - Aus 316

909(T)/2024 AUSTRALIA - NORTHERN TERRITORY - Bathurst Island - Tide gauges; buoys westwards
 Former Notice - 874(T)/2024 is cancelled
 MMA Offshore , Tidewater Offshore Operations

Post hydrographic survey, subsurface tide gauges and buoys may exist in the vicinity of the following positions:

- 10° 58'.5 S 129° 00'.0 E
- 10° 58'.4 S 129° 11'.7 E
- 10° 57'.7 S 129° 23'.5 E
- 11° 10'.1 S 129° 00'.3 E
- 11° 08'.1 S 129° 12'.4 E
- 11° 06'.3 S 129° 31'.2 E
- 11° 21'.7 S 129° 03'.9 E
- 11° 18'.6 S 129° 15'.2 E
- 11° 15'.9 S 129° 24'.5 E
- 11° 11'.8 S 129° 44'.0 E
- 11° 24'.4 S 129° 35'.6 E
- 11° 23'.0 S 129° 47'.7 E
- 11° 35'.7 S 129° 42'.8 E
- 11° 33'.6 S 129° 52'.5 E.

Mariners are advised to navigate with caution in the area.

Chart temporarily affected - Aus 309 - Aus 310 - Aus 311

910(T)/2024 AUSTRALIA - NORTHERN TERRITORY - Darwin - Scientific instruments
 Former Notice - 328(T)/2024 is cancelled
 O2 Marine

Special light buoys, *Fl.Y.4s*, exist in the following positions:
 12° 23'.34 S 130° 39'.82 E

12° 23'.46 S 130° 48'.64 E
12° 23'.78 S 130° 44'.15 E
12° 24'.54 S 130° 45'.06 E
12° 25'.95 S 130° 48'.92 E
12° 26'.16 S 130° 46'.22 E
12° 28'.20 S 130° 46'.08 E
12° 29'.26 S 130° 47'.99 E
12° 29'.72 S 130° 52'.97 E
12° 30'.09 S 130° 52'.48 E
12° 32'.91 S 130° 52'.50 E.

Chart temporarily affected - Aus 25 - Aus 26

39(T)/2025 AUSTRALIA - NORTHERN TERRITORY - Fish Reef - Light unlit

Northern Territory Government Notice 23(T)/2024

The light, *LFI.WR.10s 10/8M* (12° 25'.93 S 130° 26'.56 E), is unlit.

Chart temporarily affected - Aus 309 - Aus 316

40(T)/2025 AUSTRALIA - NORTHERN TERRITORY - Orontes Reef - Obstruction

Northern Territory Government Notice 2(T)/2025

A ghost net exists in position 11° 02'.88 S 132° 04'.94 E. An electronic beacon has been attached to the ghost net.

Mariners are advised to navigate with caution in the area.

Chart temporarily affected - Aus 18 - Aus 721

41(T)/2025 AUSTRALIA - TIMOR SEA - Evans Shoal - Drill rig eastwards

Former Notice - 871(T)/2024 is cancelled

MODU Valaris MS-1

Drill rig *Valaris MS-1* is conducting drilling operations in position 9° 47'.86 S 130° 12'.44 E.

Chart temporarily affected - Aus 310

102(T)/2025 AUSTRALIA - NORTHERN TERRITORY - Darwin - Survey operations; dredging operations

Former Notice - 38(T)/2025 is cancelled

Northern Territory Government Notice 57/2024, 116/2024, 01/2025

Vessel *Edendrach* is conducting survey operations in an area bounded by the following positions:

12° 30'.23 S 130° 53'.46 E
12° 30'.22 S 130° 54'.29 E
12° 29'.36 S 130° 54'.28 E
12° 29'.36 S 130° 53'.46 E.

The dredges *Woomera*, *Nulla Nulla* and support vessels *Stradbroke*, *PM South*, *Salute* and *Groote Eylandt* are conducting dredging operations in the area.

A closed waters area has been established by the following positions.

12° 29'.50 S 130° 53'.75 E
12° 29'.67 S 130° 53'.80 E
12° 29'.67 S 130° 54'.15 E
12° 29'.42 S 130° 54'.14 E.

Entry into or transit through closed waters is prohibited to all vessels except those authorised.

Mariners are advised to navigate with caution in the area.

Chart temporarily affected - Aus 26

WESTERN AUSTRALIA

1078(P)/2015 AUSTRALIA - WESTERN AUSTRALIA - East Holothuria Reef - Shoaling HMAS Mermaid

Depths less than 6m have been reported in the vicinity of position 13° 33'.6 S 126° 10'.8 E.

Mariners are advised to navigate with caution in the area.

Chart which will be affected - Aus 318 - Aus 319 - Aus 727 - Aus 728

291(T)/2019 AUSTRALIA - WESTERN AUSTRALIA - Barrow Island - Well abandonment works northwestwards Chevron Australia

Sixteen anchors and mooring lines have been installed around the well in position 20° 24'.49 S 114° 50'.95 E.

Mariners are advised to navigate with caution in the area.

Chart temporarily affected - Aus 328

1285(T)/2019 AUSTRALIA - WESTERN AUSTRALIA - Port Walcott - Outer North Channel - Tide gauge Australian Maritime Safety Authority Auscoast Warning 288/2016

A tide gauge marked by a special light buoy, Q, exists in position 20° 24'.95 S 117° 23'.35 E.

Chart temporarily affected - Aus 55 - Aus 326

212(T)/2020 AUSTRALIA - WESTERN AUSTRALIA - Rottnest Island - Scientific instruments northwestwards CSIRO

Subsurface scientific instruments exist as follows:

<i>Position</i>	<i>Depth below surface</i>
31° 38'.8 S 115° 11'.8 E	24m
31° 43'.7 S 115° 02'.5 E	23m
31° 45'.9 S 114° 57'.9 E	496m
31° 59'.0 S 115° 13'.7 E	180m
31° 59'.4 S 115° 23'.1 E	22m
32° 00'.0 S 115° 25'.0 E	46m

Chart temporarily affected - Aus 754

509(T)/2022 AUSTRALIA - WESTERN AUSTRALIA - Trigg Island - Scientific instruments westwards

Former Notice - 498(T)/2020 is cancelled

Department of Transport WA Notice 66/2020

Special light buoys exist as follows:

<i>Position</i>	<i>Remarks</i>
31° 52'.70 S 115° 43'.11 E	Q(5)Y.20s
31° 52'.59 S 115° 43'.12 E	Q(5)Y.20s
31° 52'.53 S 115° 43'.32 E	Fl. Y.5s.

Chart temporarily affected - Aus 112

623(T)/2022 AUSTRALIA - WESTERN AUSTRALIA - Bunbury - Koombana Bay - Harbour works

Department of Transport WA Notice 1852/2022

On or about 17 August 2022, works associated with the demolition and construction of the boat ramp in the vicinity of position 33° 18'.71 S 115° 38'.28 E will commence.

The works area will be marked by special light buoys.

The barge *TMC1* and support vessels will be conducting piling operations and unlit piles may exist in the area.

All vessels will display appropriate lights and shapes and will monitor VHF Ch 16.

The boat ramp will be closed for the duration of the works.

Mariners are advised to navigate with caution in the area.

Chart temporarily affected - Aus 115

1032(T)/2022 AUSTRALIA - WESTERN AUSTRALIA - Geographe Bay - Scientific instruments

Former Notice - 800(T)/2022 is cancelled

Department of Transport WA Notice 2792/2022

Special light buoys, *Fl. Y. 2-5s*, exist in the following positions:

33° 35'.49 S 115° 06'.99 E

33° 36'.01 S 115° 14'.99 E

33° 37'.62 S 115° 20'.28 E.

Chart temporarily affected - Aus 755

1036(T)/2022 AUSTRALIA - WESTERN AUSTRALIA - Mullaloo - Scientific instruments

Department of Transport WA Notice 5463/2022

Scientific instruments, 4m below the surface, exist in positions 31° 45'.82 S 115° 42'.64 E and 31° 47'.43 S 115° 42'.34 E.

Chart temporarily affected - Aus 754

1039(T)/2022 AUSTRALIA - WESTERN AUSTRALIA - South West Break to Staggie Reef - Scientific instruments

Department of Transport WA Notice 5456/2022

Scientific instruments, 4m below the surface, exist in the following positions:

31° 34'.33 S 115° 35'.61 E

31° 38'.12 S 115° 38'.07 E

31° 42'.36 S 115° 38'.93 E.

Chart temporarily affected - Aus 754

293(T)/2023 AUSTRALIA - WESTERN AUSTRALIA - Dampier Archipelago - Legendre Island - Scientific instrument northwards

Former Notice - 366(T)/2022 is cancelled

O2 Marine

A scientific instrument exists on the seabed in position 20° 17'.89 S 116° 51'.58 E.

Chart temporarily affected - Aus 57 - Aus 327

367(T)/2023 AUSTRALIA - WESTERN AUSTRALIA - Gantheaume Bay - Scientific instrument northwestwards

GHD

A subsurface scientific instrument, 0.5m above the seabed, exists in position 27° 26.89' S 113° 56.97' E.

Chart temporarily affected - Aus 332

535(T)/2023 AUSTRALIA - WESTERN AUSTRALIA - Bonaparte Archipelago - Bernouilli Island - Obstruction

Australian Maritime Safety Authority

An obstruction has been reported in position 14° 59'.56 S 124° 45'.49 E.

Mariners are advised to navigate with caution in the area.

Chart temporarily affected - Aus 730

625(T)/2023 AUSTRALIA - WESTERN AUSTRALIA - Kalbarri - Scientific instrument

Department of Transport WA Notice 5748(T)/2023

A subsurface scientific instrument, 0.66m above the seabed, exists in position 27° 24'.70 S 114° 02'.79 E.

Chart temporarily affected - Aus 332

627(T)/2023 AUSTRALIA - WESTERN AUSTRALIA - Lagrange Bay - Scientific instruments
Department of Transport WA Notice 5749(T)/2023

Subsurface scientific instruments exist in the following positions:

18° 35'.12 S 121° 44'.06 E
18° 35'.54 S 121° 44'.98 E
18° 35'.85 S 121° 45'.81 E
18° 36'.01 S 121° 43'.89 E
18° 36'.43 S 121° 46'.98 E
18° 36'.48 S 121° 47'.17 E
18° 36'.49 S 121° 42'.92 E
18° 36'.57 S 121° 46'.91 E
18° 36'.59 S 121° 45'.45 E
18° 37'.00 S 121° 44'.32 E
18° 37'.00 S 121° 46'.69 E
18° 37'.05 S 121° 46'.95 E
18° 37'.20 S 121° 46'.31 E
18° 37'.25 S 121° 47'.09 E
18° 37'.66 S 121° 45'.68 E
18° 37'.81 S 121° 43'.16 E
18° 38'.06 S 121° 44'.56 E
18° 38'.53 S 121° 46'.45 E
18° 38'.72 S 121° 45'.65 E
18° 38'.83 S 121° 46'.83 E
18° 39'.12 S 121° 44'.44 E
18° 39'.15 S 121° 43'.16 E
18° 39'.47 S 121° 46'.19 E
18° 39'.76 S 121° 45'.30 E.

Mariners are advised to navigate with caution in the area.

Chart temporarily affected - Aus 324

630(T)/2023 AUSTRALIA - WESTERN AUSTRALIA - Torbay to King George Sound - Scientific instruments
Department of Transport WA Notice 5742/2023

Scientific instruments marked by special light buoys, *Fl. Y.3s*, exist in the following positions:

35° 04'.92 S 117° 49'.18 E
35° 05'.38 S 117° 57'.75 E
35° 05'.45 S 117° 57'.76 E.

Chart temporarily affected - Aus 118

767(T)/2023 AUSTRALIA - WESTERN AUSTRALIA - Carnarvon - Obstructions
Department of Transport WA Notice 5769/2023

Pylons, 30cm below the surface, exist in the vicinity of position 24° 54'.35 S 113° 38'.61 E.

Mariners are advised to navigate with caution in the area.

Chart temporarily affected - Aus 73

774(T)/2023 AUSTRALIA - WESTERN AUSTRALIA - Rottnest Island - Thomson Bay - Rock
Department of Transport WA Notice 5796/2023

A rock outcrop has been reported in position 31° 59'.82 S 115° 32'.64 E.

Mariners are advised to navigate with caution in the area.

Chart temporarily affected - Aus 112

820(T)/2023 AUSTRALIA - WESTERN AUSTRALIA - Browse Island - Light altered northwestwards
Australian Maritime Safety Authority Auscoast Warning 213/2023

The light, *Mo(U)15s 15M* (13° 56'.37 S 123° 17'.87 E), has been temporarily altered to *Mo(U)15s 10M*.

Chart temporarily affected - Aus 319 - Aus 320 - Aus 4603 (INT 603) - Aus 4722 (INT 722)

822(T)/2023 AUSTRALIA - WESTERN AUSTRALIA - Dampier - Mermaid Sound - Scientific instrument
Pilbara Ports Authority Notice D23(T)/2023

A special light buoy, *Fl(5)Y.20s*, exists in position 20° 30'.81 S 116° 45'.56 E.

Chart temporarily affected - Aus 57

900(T)/2023 AUSTRALIA - WESTERN AUSTRALIA - Lowendal Islands - Light altered
Santos

The light, *Fl.3s* (20° 38'.04 S 115° 34'.34 E), has been temporarily altered to *Fl.Y.2·5s*.

Chart temporarily affected - Aus 65 - Aus 742

942(T)/2023 AUSTRALIA - WESTERN AUSTRALIA - Barrow Island - Whites Beach - Subsea operations
Bhagwan Marine

Diving and ROV operations are in progress in an area, marked by special buoys, bounded by the following positions:

20° 41'.43 S 115° 24'.16 E

20° 41'.62 S 115° 24'.66 E

20° 41'.17 S 115° 24'.85 E

20° 40'.97 S 115° 24'.35 E.

Mariners are advised to navigate with caution in the area.

Chart temporarily affected - Aus 65 - Aus 742

1062(T)/2023 AUSTRALIA - WESTERN AUSTRALIA - Carnarvon - Light beacon unlit
Department of Transport WA Notice 5843/2023

The light beacon, *Iso.4s 4M* (24° 54'.18 S 113° 38'.39 E), is unlit.

Chart temporarily affected - Aus 73

1063(T)/2023 AUSTRALIA - WESTERN AUSTRALIA - Cockburn Sound - Kwinana - Scientific instruments
Fremantle Ports Notice 5(T)/2023

Subsurface scientific instruments, 8m below the surface, exist in positions 32° 11'.88 S 115° 45'.36 E and 32° 11'.94 S 115° 45'.42 E.

Chart temporarily affected - Aus 117

1065(T)/2023 AUSTRALIA - WESTERN AUSTRALIA - Fremantle - Arthur Head - Scientific instrument
Department of Transport WA Notice 5895/2023

A subsurface scientific instrument, 5.5m below the surface, exists in positions 32° 03'.31 S 115° 44'.16 E.

Chart temporarily affected - Aus 112 - Aus 117

25(T)/2024 AUSTRALIA - WESTERN AUSTRALIA - Dampier Archipelago - Brigadier Islands - Light buoy northwards

MetOcean

A special light buoy, *Fl(5)Y.20s*, exists in position 20° 16'.78 S 116° 33'.71 E.

Chart temporarily affected - Aus 327 - Aus 742

27(T)/2024 AUSTRALIA - WESTERN AUSTRALIA - Exmouth Plateau to Dampier - Pipe laying operations

Subsea 7

Vessel *Seven Oceanic* is conducting pipe laying operations in the Scarborough Field between approximate positions 19° 45'.0 S 113° 07'.0 E and 20° 15'.0 S 116° 28'.0 E.

Mariners are advised to navigate with caution in the area. 0.27M clearance requested.

Note: For e-notice users, please see full edition for map.

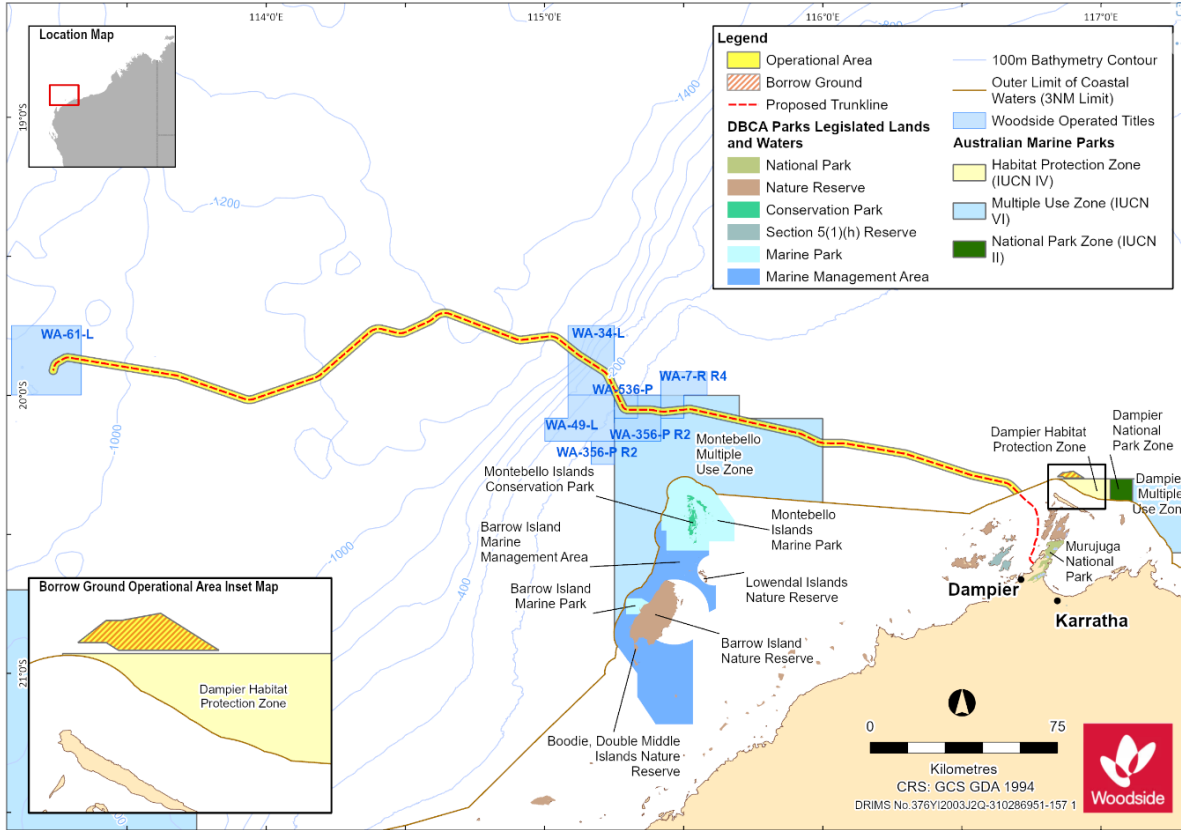


Chart temporarily affected - Aus 327 - Aus 328 - Aus 742 - Aus 4722 (INT 722) - Aus 4723 (INT 723)

31(T)/2024 AUSTRALIA - WESTERN AUSTRALIA - Laurance Reef to Quinns Rocks - Scientific instruments
Department of Transport WA Notice 5902/2023

Special light buoys, *Fl.Y.2-5s*, exist in the following positions:

- 31° 39'.60 S 115° 39'.88 E
- 31° 40'.63 S 115° 40'.24 E
- 31° 33'.28 S 115° 37'.30 E.

Chart temporarily affected - Aus 754

33(T)/2024 AUSTRALIA - WESTERN AUSTRALIA - Norwegian Bay - Beacon obscured
Department of Transport WA Notice 5805/2023

The rear leading beacon is obscured and currently not visible.

The recommended track may no longer indicate the best passage through the reef.

Mariners are advised to navigate with caution in the area.

Chart temporarily affected - Aus 745

70(T)/2024 AUSTRALIA - WESTERN AUSTRALIA - Cockburn Sound - Medina Channel - Light beacon destroyed
Fremantle Ports Notice 15/2023

The port lateral light beacon, *Fl.R.2s C* (32° 09'.90 S 115° 45'.51 E), has been destroyed; a port lateral light buoy, *Fl.R.2s*, exists in situ.

Chart temporarily affected - Aus 117

72(T)/2024 AUSTRALIA - WESTERN AUSTRALIA - Fremantle - Owen Anchorage - Scientific instruments
Fremantle Ports Notice 19/2023

Subsurface scientific instruments exist on the seabed in positions 32° 05'.42 S 115° 43'.74 E and 32° 08'.01 S 115° 43'.22 E.

Mariners are advised to navigate with caution in the area.

Chart temporarily affected - Aus 117

167(T)/2024 AUSTRALIA - WESTERN AUSTRALIA - Rottnest Island - Point Clune - Scientific instrument northwards
MMA Offshore

A special light buoy, *Fl.Y*, exists in position 31° 57'.072 S 115° 31'.62 E.

Chart temporarily affected - Aus 112 - Aus 754

223(T)/2024 AUSTRALIA - WESTERN AUSTRALIA - Bateman Bay to Bills Bay - Scientific instruments
Sydney Institute of Marine Science

Subsurface scientific instruments exist as follows:

<i>Position</i>	<i>Metres below surface</i>
23° 02'.58 S 113° 47'.45 E	4.9
23° 02'.86 S 113° 47'.16 E	14.6
23° 02'.88 S 113° 49'.06 E	13
23° 02'.89 S 113° 47'.53 E	17.2
23° 02'.89 S 113° 47'.91 E	18.1
23° 02'.89 S 113° 48'.28 E	14.2
23° 02'.89 S 113° 48'.67 E	17.1
23° 05'.09 S 113° 48'.53 E	8.7
23° 07'.27 S 113° 45'.09 E	3
23° 07'.28 S 113° 45'.43 E	7
23° 07'.42 S 113° 41'.37 E	66
23° 07'.45 S 113° 41'.83 E	66
23° 07'.48 S 113° 44'.95 E	3
23° 07'.50 S 113° 42'.28 E	64
23° 07'.57 S 113° 42'.72 E	60
23° 07'.61 S 113° 43'.58 E	42
23° 07'.62 S 113° 43'.15 E	52
23° 07'.64 S 113° 44'.08 E	30
23° 07'.64 S 113° 46'.13 E	2
23° 08'.15 S 113° 45'.22 E	8.

Chart temporarily affected - Aus 745 - Aus 746

224(T)/2024 AUSTRALIA - WESTERN AUSTRALIA - Cape Range - Tantabiddi - Scientific instruments
Sydney Institute of Marine Science

Subsurface scientific instruments exist as follows:

<i>Position</i>	<i>Metres below surface</i>
21° 52'.83 S 113° 54'.33 E	86
21° 53'.03 S 113° 54'.67 E	84
21° 53'.31 S 113° 55'.03 E	75
21° 53'.46 S 113° 55'.44 E	57
21° 53'.71 S 113° 55'.79 E	36.

Chart temporarily affected - Aus 328 - Aus 329 - Aus 745

255(T)/2024 AUSTRALIA - WESTERN AUSTRALIA - Eugene McDermott Shoal - Drill rig northwestwards
MODU *Transocean Equinox*

Drill rig *Transocean Equinox* is conducting drilling operations in position 12° 57'.9 S 124° 26'.5 E. 2M clearance requested.

Chart temporarily affected - Aus 319

258(T)/2024 AUSTRALIA - WESTERN AUSTRALIA - Exmouth Gulf - Scientific instrument
JASCO Applied Sciences (Australia)

A subsurface scientific instrument, 0.5m above the seabed, exists in position 22° 12'.86 S 114° 13'.93 E.

Mariners are advised to navigate with caution in the area and keep well clear.

Chart temporarily affected - Aus 329 - Aus 744

259(T)/2024 AUSTRALIA - WESTERN AUSTRALIA - Fremantle - Scientific instrument
Department of Transport WA Notice 5994/2024

A subsurface scientific instrument, 0.5m above the seabed, exists in position 32° 03'.85 S 115° 43'.37 E.

Mariners are advised to navigate with caution in the area.

Chart temporarily affected - Aus 112 - Aus 117

263(T)/2024 AUSTRALIA - WESTERN AUSTRALIA - Port Hedland - Light beacons altered
Pilbara Ports Authority Notice PH4/2024

The starboard lateral light beacon, *Fl.G.4s 20m No15* (20° 10'.40 S 118° 30'.49 E), has been temporarily altered to *Fl.G.2s 20m No15*.

The port lateral light beacon, *Fl.R.4s 20m No16* (20° 10'.33 S 118° 30'.63 E), has been temporarily altered to *Fl.R.2s 20m No16*.

Chart temporarily affected - Aus 53

265(T)/2024 AUSTRALIA - WESTERN AUSTRALIA - Thevenard Island - Obstruction
Chevron Australia

An obstruction, 15m below the surface, exists in position 21° 24'.17 S 115° 02'.81 E.

Chart temporarily affected - Aus 64 - Aus 328 - Aus 743

297(T)/2024 AUSTRALIA - WESTERN AUSTRALIA - Cape Naturaliste - Scientific instrument northwestwards
Former Notice - 821(T)/2023 is cancelled
JASCO Applied Sciences (Australia)

A subsurface scientific instrument, 5m above the seabed, exists in position 33° 20'.07 S 114° 46'.94 E.

Chart temporarily affected - Aus 335

334(T)/2024 AUSTRALIA - WESTERN AUSTRALIA - Dampier - Rio Tinto Channel - AIS and racon inoperative
Pilbara Ports Authority Notice D12(T)/2024

The AIS and Racon(M) at special light buoy, *Q(4)Y.6s Sea Buoy* (20° 25'.45 S 116° 42'.92 E), are inoperative.

Chart temporarily affected - Aus 57 - Aus 327

415(T)/2024 AUSTRALIA - WESTERN AUSTRALIA - Bathurst Island - Survey operations westwards
Guardian Geomatics

On or about 3 June 2024, vessel *Offshore Surveyor* will be conducting survey operations in an area bounded by the following positions:

11° 35'.78 S 129° 42'.30 E
11° 14'.63 S 129° 26'.30 E
11° 21'.65 S 129° 04'.19 E
11° 57'.79 S 129° 21'.84 E
12° 06'.07 S 129° 49'.89 E
11° 49'.26 S 129° 24'.46 E
11° 37'.97 S 129° 16'.65 E

11° 37'.92 S 129° 34'.00 E.

Tide gauges, marked by special light buoys *Fl. Y. 5s*, will be deployed in the following positions:

11° 14'.4 S 129° 26'.8 E
11° 18'.0 S 129° 15'.3 E
11° 21'.7 S 129° 03'.9 E
11° 22'.0 S 129° 32'.5 E
11° 28'.2 S 129° 23'.7 E
11° 30'.3 S 129° 07'.9 E
11° 35'.7 S 129° 42'.8 E
11° 38'.3 S 129° 32'.1 E
11° 38'.3 S 129° 22'.2 E
11° 39'.2 S 129° 12'.2 E
11° 49'.3 S 129° 24'.6 E
11° 59'.2 S 129° 24'.3 E
11° 59'.5 S 129° 39'.5 E.

Mariners are advised to navigate with caution in the area.

Chart temporarily affected - Aus 309 - Aus 311

418(T)/2024 AUSTRALIA - WESTERN AUSTRALIA - Geraldton - Obstruction; light buoy
Mid West Ports Notice 15/2024

An obstruction marked by a special light buoy, *Fl. Y. 3s*, exists in position 28° 46'.30 S 114° 35'.57 E.

Mariners are advised to navigate with caution in the area and keep well clear.

Chart temporarily affected - Aus 81

493(T)/2024 AUSTRALIA - WESTERN AUSTRALIA - Dampier Archipelago - Mooring buoy unlit northwards
Vermilion Oil and Gas Australia

Lit mooring buoy, *Mo(U) Y. 15s* (20° 06'.9 S 116° 26'.0 E), is unlit.

Chart temporarily affected - Aus 327 - Aus 742

495(T)/2024 AUSTRALIA - WESTERN AUSTRALIA - Exmouth - Scientific instrument
Department of Transport WA Notice 6097/2024

A scientific instrument exists on the seabed in position 21° 57'.59 S 114° 09'.11 E.

Chart temporarily affected - Aus 744 - Aus 745

497(T)/2024 AUSTRALIA - WESTERN AUSTRALIA - King George Sound - Seal Island - Wave energy converter
Department of Transport WA Notice 6093/2024

Works to install anchors associated with the installation of a wave energy converter are in progress in the vicinity of position 35° 04'.72 S 117° 58'.75 E.

Mariners are advised to navigate with caution in the area.

Chart temporarily affected - Aus 118

500(T)/2024 AUSTRALIA - WESTERN AUSTRALIA - Peron Peninsula - Guichenault Point - Scientific instruments
Department of Transport WA Notice 6063/2023

Subsurface scientific instruments, 5m below the surface, exist in the following positions:

25° 34'.55 S 113° 37'.54 E
25° 34'.56 S 113° 36'.35 E
25° 35'.09 S 113° 37'.56 E
25° 35'.10 S 113° 36'.36 E
25° 35'.26 S 113° 37'.01 E
25° 35'.63 S 113° 37'.56 E
25° 35'.64 S 113° 36'.38 E
25° 36'.17 S 113° 37'.58 E

25° 36'.19 S 113° 36'.39 E
25° 36'.56 S 113° 37'.95 E
25° 36'.71 S 113° 37'.58 E
25° 36'.73 S 113° 36'.40 E
25° 36'.91 S 113° 37'.99 E
25° 37'.25 S 113° 37'.60 E
25° 37'.27 S 113° 36'.40 E.

Mariners are advised to navigate with caution in the area and keep well clear.

Chart temporarily affected - Aus 331

534(T)/2024 AUSTRALIA - WESTERN AUSTRALIA - Dampier - Mermaid Sound - Scientific instrument; exclusion zone

Pilbara Ports Authority Notice D15(T)/2024

A scientific instrument exists on the seabed in position 20° 29'.65 S 116° 45'.95 E. A 200m radius exclusion zone exists around the instrument.

Mariners are advised to navigate with caution in the area and to keep well clear.

Chart temporarily affected - Aus 57

568(T)/2024 AUSTRALIA - WESTERN AUSTRALIA - Port Geographe Marina - Dredging operations

Department of Transport WA Notice 6124/2024

The dredge *Cooper II* is conducting dredging operations at the entrance to the marina (33° 37'.74 S 115° 23'.38 E).

A floating and submerged pipeline exists from the dredge and is marked by special light buoys.

The dredge will display appropriate lights and shapes and will monitor VHF Ch 16, Marine 27 and MHz Ch 88.

Mariners are advised to contact the dredge if they are unsure where to safely pass.

Spoil will be deposited in the spoil ground (33° 37'.42 S 115° 23'.72 E) which is marked by special light buoys in the following positions:

33° 37'.45 S 115° 23'.50 E
33° 37'.37 S 115° 23'.67 E
33° 37'.37 S 115° 23'.88 E
33° 37'.46 S 115° 23'.88 E
33° 37'.46 S 115° 23'.61 E
33° 37'.49 S 115° 23'.56 E.

Mariners are advised to navigate with caution in the area and keep well clear.

Chart temporarily affected - Aus 116

613(T)/2024 AUSTRALIA - WESTERN AUSTRALIA - Cape Preston - Light buoy northwestwards

Australian Maritime Safety Authority, Pilbara Ports Authority

A pink spherical light buoy, Q.Y, exists in position 20° 35'.81 S 116° 04'.58 E.

Mariners are advised to navigate with caution in the area.

Chart temporarily affected - Aus 327 - Aus 742

620(T)/2024 AUSTRALIA - WESTERN AUSTRALIA - Princess Royal Harbour - Marine farm; light buoys

Former Notice - 111(T)/2023 is cancelled

Department of Transport WA Notice 6130/2024

A marine farm marked by special light buoys, *Fl.Y.4s*, exists in an area bounded by the following positions:

35° 04'.22 S 117° 54'.51 E
35° 04'.22 S 117° 54'.61 E
35° 04'.21 S 117° 54'.61 E
35° 04'.21 S 117° 55'.00 E
35° 04'.09 S 117° 55'.00 E

35° 04'.09 S 117° 55'.20 E
35° 04'.36 S 117° 55'.20 E
35° 04'.36 S 117° 55'.14 E
35° 04'.48 S 117° 55'.14 E
35° 04'.48 S 117° 54'.51 E.

Chart temporarily affected - Aus 118

621(T)/2024 AUSTRALIA - WESTERN AUSTRALIA - Wilson Head - Scientific instruments

Former Notice - 631(T)/2023 is cancelled

Department of Transport WA Notice 5793/2024

Two special light buoys, *Fl.Y.2-5s*, exist in the vicinity of position 35° 02'.93 S 117° 21'.82 E.

Chart temporarily affected - Aus 336

652(T)/2024 AUSTRALIA - WESTERN AUSTRALIA - Bunbury - Dredging operations; survey operations

Department of Transport WA Notice 6148/2024

The dredge *Modi R*, survey vessel *Rind R* and support vessels are conducting dredging and survey operations in the Port of Bunbury (33° 18'.67 S 115° 39'.13 E).

Vessels will display appropriate lights and shapes and will monitor VHF Ch 12 and Ch 16.

Mariners are requested to contact the operators before navigating past working vessels.

Mariners are advised to navigate with caution in the area.

Chart temporarily affected - Aus 115

685(T)/2024 AUSTRALIA - WESTERN AUSTRALIA - Yampi Sound - Comber Rock - Light buoy unlit

Kimberley Ports Authority Notice 10/2024

The east cardinal light buoy, *Q(3)10s* (16° 06'.42 S 123° 39'.66 E), is unlit.

Chart temporarily affected - Aus 40 - Aus 732 - Aus 733

719(T)/2024 AUSTRALIA - WESTERN AUSTRALIA - Exmouth Plateau - Drilling operations

Woodside Energy Ltd

Drill rig *Valaris DPS-1* and support vessels are conducting drilling operations in the following positions:

19° 45'.88 S 113° 14'.46 E
19° 49'.46 S 113° 13'.14 E
19° 52'.51 S 113° 06'.69 E
19° 52'.65 S 113° 13'.41 E
19° 53'.31 S 113° 10'.06 E
19° 53'.45 S 113° 08'.73 E
19° 53'.51 S 113° 08'.73 E
19° 53'.81 S 113° 06'.92 E.

A subsurface scientific instrument exists on the seabed in each of the above positions.

Mariners are advised to navigate with caution in the area.

Chart temporarily affected - Aus 4723 (INT 723)

785(T)/2024 AUSTRALIA - WESTERN AUSTRALIA - Eugene McDermott Shoal to Scott Reef - Scientific instruments

Former Notice - 257(T)/2024 is cancelled

JASCO Applied Sciences (Australia)

Subsurface scientific instruments exist as follows:

<i>Position</i>	<i>Remarks</i>
12° 57'.59 S 124° 40'.40 E	1.2m above seabed
12° 57'.76 S 124° 12'.63 E	1.2m above seabed
12° 58'.05 S 123° 42'.25 E	1.2m above seabed
13° 58'.25 S 122° 01'.51 E	1.5m above seabed

13° 59'.16 S 121° 46'.41 E 1.5m above seabed
13° 59'.56 S 121° 58'.91 E 1.5m above seabed
14° 02'.03 S 122° 00'.94 E 1.5m above seabed
14° 02'.39 S 121° 58'.51 E 20m below the surface.

Mariners are advised to navigate with caution in the area.

Chart temporarily affected - Aus 319 - Aus 322

788(T)/2024 AUSTRALIA - WESTERN AUSTRALIA - Muiron Islands - Subsea operations northwestwards
Santos

On or about 18 October 2024, vessel *Fugro Etive* will be conducting subsea operations in an area bound by the following positions:

21° 24'.84 S 114° 03'.72 E
21° 24'.84 S 114° 05'.75 E
21° 19'.89 S 114° 05'.75 E
21° 19'.89 S 114° 03'.72 E.

Mariners are advised to navigate with caution in the area.

Chart temporarily affected - Aus 328 - Aus 329 - Aus 744

828(T)/2024 AUSTRALIA - WESTERN AUSTRALIA - North West Cape - Scientific instrument northwestwards
Fugro

A special light buoy, *Fl(5)Y.20s*, exists in position 21° 26'.94 S 113° 48'.54 E.

Chart temporarily affected - Aus 328 - Aus 329

829(T)/2024 AUSTRALIA - WESTERN AUSTRALIA - Thevenard Island - Scientific instrument northwestwards
Former Notice - 864(T)/2023 is cancelled
Fugro

A special light buoy, *Fl(5)Y.20s*, exists in position 21° 11'.37 S 114° 40'.23 E.

Chart temporarily affected - Aus 328 - Aus 743 - Aus 744

876(T)/2024 AUSTRALIA - WESTERN AUSTRALIA - Dampier Archipelago - Roly Rock - Drill rig
Australian Maritime Safety Authority Auscoast 332/2024

Drill rig *Q7000* is moored in position 20° 30'.11 S 116° 26'.00 E.

Chart temporarily affected - Aus 57 - Aus 327 - Aus 742

877(T)/2024 AUSTRALIA - WESTERN AUSTRALIA - Geraldton - Batavia Coast Boat Harbour - Harbour works
Department of Transport WA Notice 6221/2024

Works associated with the construction of new marina facilities are in progress in the vicinity of position 28° 46'.06 S 114° 36'.71 E.

The works area is marked by special light buoys, *Fl.Y.2-5s*.

All vessels involved in the works will display appropriate lights and shapes and will monitor VHF Ch 16.

Mariners are advised to navigate with caution in the area.

Chart temporarily affected - Aus 81

878(T)/2024 AUSTRALIA - WESTERN AUSTRALIA - Glomar Shoal - Drill rig northwestwards
MODU *Ocean Apex*

Drill rig *Ocean Apex* is conducting drilling operations in position 19° 15'.55 S 116° 38'.27 E.

Chart temporarily affected - Aus 327

880(T)/2024 AUSTRALIA - WESTERN AUSTRALIA - Thevenard Island to Muiron Islands - Subsea operations northwestwards

Technip FMC , Sapura Energy Australia

On or about 15 November 2024, vessel *Skandi Hercules* will be conducting subsea structure recovery operations in the Griffin Field (21° 13'.4 S 114° 38'.7 E), Enfield Field (21° 28'.9 S 113° 59'.3 E) and the Stybarrow Field (21° 24'.3 S 113° 51'.7 E).

Mariners are advised to navigate with caution in the area.

Chart temporarily affected - Aus 328 - Aus 329 - Aus 744

913(P)/2024 AUSTRALIA - WESTERN AUSTRALIA - Broome - Shoaling

Department of Transport WA

Latest survey indicates shoaler depths than those charted may exist in an area bounded by the following positions:

18° 01'.47 S 122° 15'.70 E

18° 01'.47 S 122° 16'.54 E

18° 00'.72 S 122° 16'.54 E

18° 00'.72 S 122° 15'.70 E.

Mariners are advised to navigate with caution in the area.

Charts will be updated in due course.

Chart which will be affected - Aus 50

916(T)/2024 AUSTRALIA - WESTERN AUSTRALIA - Double Island - Platform unlit

Santos

The *Twickenham* platform, *Mo(U)Y.15s* (20° 45'.35 S 115° 30'.28 E), is unlit.

A special light buoy, *Mo(U)Y.15s*, exists in position 20° 45'.41 S 115° 30'.33 E.

Chart temporarily affected - Aus 65 - Aus 327 - Aus 328 - Aus 742

918(T)/2024 AUSTRALIA - WESTERN AUSTRALIA - North West Cape - Light unlit; light established

Former Notice - 655(T)/2024 is cancelled

Australian Maritime Safety Authority Auscoast Warning 216/2024, Preliminary ATH 22/2024

The light, *Fl.10s 129m 21M* (21° 48'.37 S 114° 09'.61 E), is unlit.

A temporary light, *Fl.10s 95m 19M (Obscd 172.5° - 202.5° (030°))*, exists in position 21° 49'.22 S 114° 06'.06 E.

Chart temporarily affected - Aus 328 - Aus 329 - Aus 744 - Aus 745 - Aus 4060 (INT 60) - Aus 4070 (INT 70) - Aus 4071 (INT 71) - Aus 4708 (INT 708) - Aus 4723 (INT 723)

977(T)/2024 AUSTRALIA - WESTERN AUSTRALIA - Barrow Island - Subsea operations northwestwards

Monson Offshore

On or about 12 December 2024, vessel *JSD6000* will be conducting subsea operations in the vicinity of positions 19° 48'.63 S 114° 37'.38 E and 19° 52'.73 S 114° 36'.48 E.

Mariners are advised to navigate with caution in the area. 500m clearance requested.

Chart temporarily affected - Aus 328

978(T)/2024 AUSTRALIA - WESTERN AUSTRALIA - Barrow Island - Scientific instrument northwestwards

Fugro

A special light buoy, *Fl(5)Y.20s*, exists in position 19° 51'.33 S 114° 35'.48 E.

Chart temporarily affected - Aus 328

982(T)/2024 AUSTRALIA - WESTERN AUSTRALIA - Cape Leschenault to Cape Bouvard - Fish aggregating devices westwards

Department of Primary Industries and Regional Development WA

The special light buoy, *Fl.Y.5s FAD (Oct-Apr)* (31° 15'.13 S 115° 01'.54 E), has been temporarily relocated to position 31° 16'.57 S 115° 01'.63 E.

The special light buoy, *Fl.Y.5s FAD (Oct-Apr)* (32° 21'.56 S 115° 03'.76 E), has been temporarily relocated to position 32° 17'.56 S 115° 05'.64 E.

The special light buoy, *Fl.Y.5s FAD (Oct-Apr)* (32° 37'.64 S 115° 01'.73 E), has been temporarily relocated to position 32° 33'.25 S 115° 03'.40 E.

Chart temporarily affected - Aus 754 - Aus 755

987(P)/2024 AUSTRALIA - WESTERN AUSTRALIA - Derby - Shoaling

Department of Transport WA

Latest survey indicates shoaler depths than those charted may exist in an area bounded by the following positions:

17° 16'.19 S 123° 35'.73 E

17° 16'.92 S 123° 36'.63 E

17° 17'.95 S 123° 36'.28 E

17° 17'.74 S 123° 35'.72 E

17° 16'.50 S 123° 35'.60 E

Mariners are advised to navigate with caution in the area.

Charts will be updated in due course.

Chart which will be affected - Aus 45

988(T)/2024 AUSTRALIA - WESTERN AUSTRALIA - Fremantle - Deepwater Channel - Scientific instrument

Former Notice - 1023(T)/2023 is cancelled

Department of Transport WA

A special light buoy, *Fl(5)Y.20s*, exists in position 31° 58'.78 S 115° 41'.38 E.

Chart temporarily affected - Aus 112

990(T)/2024 AUSTRALIA - WESTERN AUSTRALIA - Houtman Abrolhos - Zeewijk Channel - Fish aggregating device

Department of Primary Industries and Regional Development WA

A special light buoy, *Fl.Y.5s FAD (Oct-Apr)*, exists in position 28° 52'.74 S 113° 42'.37 E.

Chart temporarily affected - Aus 332

991(T)/2024 AUSTRALIA - WESTERN AUSTRALIA - Joseph Bonaparte Gulf - Drill rig

Eni Australia Ltd , INPEX

On or about 9 December 2024, drill rig *Valaris 247* will be conducting drilling operations in position 13° 53'.70 S 128° 29'.05 E.

Chart temporarily affected - Aus 318

992(T)/2024 AUSTRALIA - WESTERN AUSTRALIA - Jurien Bay - Fish aggregating device westwards

Department of Primary Industries and Regional Development WA

A special light buoy, *Fl.Y.5s FAD (Oct-Apr)*, exists in position 30° 18'.49 S 114° 35'.30 E.

Chart temporarily affected - Aus 753

995(T)/2024 AUSTRALIA - WESTERN AUSTRALIA - Muiron Islands - Subsea operations northwestwards

Woodside Energy Ltd

On or about 19 December 2024, vessel *MMA Pinnacle* will be conducting subsea structure recovery operations in the Stybarrow Field in the vicinity of position 21° 28'.48 S 113° 49'.54 E and 21° 29'.70 S 113° 49'.74 E.

Mariners are advised to navigate with caution in the area.

Chart temporarily affected - Aus 328 - Aus 329

996(T)/2024 AUSTRALIA - WESTERN AUSTRALIA - Naturaliste Reefs - Fish aggregating devices westwards
Department of Primary Industries and Regional Development WA

The special light buoy, *Fl. Y. 5s FAD (Nov-Apr)* (33° 08'.65 S 114° 56'.63 E), has been temporarily relocated to position 33° 15'.79 S 114° 34'.94 E.

The special light buoy, *Fl. Y. 5s FAD (Nov-Apr)* (33° 13'.96 S 114° 51'.47 E), has been temporarily relocated to position 33° 18'.62 S 114° 39'.43 E.

Chart temporarily affected - Aus 335

998(T)/2024 AUSTRALIA - WESTERN AUSTRALIA - Pelsaert Island - Wreck Point - Fish aggregating device off station westwards

Department of Primary Industries and Regional Development

The special light buoy, *Fl. Y. 5s FAD (Dec-Apr)* (28° 59'.00 S 113° 46'.88 E), is off station.

Chart temporarily affected - Aus 332 - Aus 752

999(P)/2024 AUSTRALIA - WESTERN AUSTRALIA - Port Walcott - Shoaling

Former Notice - 789(P)/2024 is cancelled
Discovery Marine

Latest survey indicates shoaler depths than those charted may exist in an area bounded by the following positions:

20° 29'.89 S 117° 25'.65E
20° 29'.89 S 117° 27'.02E
20° 27'.96 S 117° 27'.02E
20° 27'.96 S 117° 25'.65E.

Mariners are advised to navigate with caution in the area.

Charts will be updated in due course.

Chart which will be affected - Aus 55 - Aus 326

46(T)/2025 AUSTRALIA - WESTERN AUSTRALIA - Exmouth - Scientific instruments

Department of Transport WA Notice 6268/2024

Scientific instruments, 5m below the surface, exist as follows:

<i>Position</i>	<i>Remarks</i>
21° 55'.56 S 114° 08'.87 E	marked by special light buoy, <i>Fl. Y. 4s</i>
21° 57'.66 S 114° 08'.82 E	
21° 58'.02 S 114° 08'.76 E	marked by special light buoy, <i>Fl. Y. 4s</i>
21° 59'.04 S 114° 08'.46 E.	

Chart temporarily affected - Aus 744 - Aus 745

50(T)/2025 AUSTRALIA - WESTERN AUSTRALIA - Muiron Islands - Drill rig northwestwards

Former Notice - 917(T)/2024 is cancelled
Australian Maritime Safety Authority Auscoast Warning 7/2025

Drill rig *Transocean Endurance* is conducting drilling operations in position 21° 28'.18 S 113° 50'.73 E.

Chart temporarily affected - Aus 328 - Aus 329

55(T)/2025 AUSTRALIA - WESTERN AUSTRALIA - Rottnest Island - Phillip Rock - Entry prohibited

Department of Transport WA Notice 6302/2025

Entry is prohibited within a 200m radius of position 31° 59'.83 S 115° 33'.78 E.

Only government vessels and those associated with a coordinated response on site are permitted to enter the area.

Mariners area advised to navigate with caution in the area.

Chart temporarily affected - Aus 112

56(T)/2025 AUSTRALIA - WESTERN AUSTRALIA - Rottnest Island - Light buoy off station westwards
Curtin University

The special light buoy, *Fl.Y.5s AIS* (31° 58'.80 S 115° 13'.68 E), is off station and in position 31° 35'.64 S 115° 05'.00 E.

Chart temporarily affected - Aus 754

58(T)/2025 AUSTRALIA - WESTERN AUSTRALIA - Warnbro Sound - Survey operations westwards
Subcom , Australian Maritime Safety Authority Auscoast Warning 13/2025

Vessel *Ocean Surveyor* is conducting survey operations in an area bounded by the following positions:

32° 07'.64 S 111° 04'.39 E

32° 34'.98 S 115° 13'.09 E

32° 14'.96 S 115° 16'.09 E

31° 47'.54 S 111° 05'.88 E.

Mariners are advised to navigate with caution in the area. 2.5M clearance requested.

Chart temporarily affected - Aus 755 - Aus 4708 (INT 708) - Aus 4709 (INT 709)

103(T)/2025 AUSTRALIA - WESTERN AUSTRALIA - Barrow Island - Subsea operations westwards
Santos

MV *Skandi Singapore* is conducting subsea operations in the vicinity of position 20° 36'.06 S 114° 55'.17 E.

A 500m radius exclusion zone exists around the vessel.

Mariners are advised to navigate with caution in the area.

Chart temporarily affected - Aus 328

105(T)/2025 AUSTRALIA - WESTERN AUSTRALIA - Hilarys Boat Harbour - Scientific instrument westwards
University of Western Australia

A special light buoy, *Fl.Y.2.5s*, exists in position 31° 50'.72 S 115° 38'.78 E.

Chart temporarily affected - Aus 754

106(T)/2025 AUSTRALIA - WESTERN AUSTRALIA - Muiron Islands - Wave glider northwestwards
Blue Ocean Monitoring

An underwater glider is operating in an area bounded by the following positions:

21° 41'.0 S 114° 11'.0S

21° 23'.0 S 114° 27'.0S

21° 06'.5 S 113° 56'.5S

19° 37'.0 S 113° 22'.5S

19° 44'.0 S 113° 01'.5S

21° 31'.0 S 113° 37'.5S.

Mariners are advised to navigate with caution in the area.

Chart temporarily affected - Aus 328 - Aus 329 - Aus 744

SOUTH AUSTRALIA

81(T)/2021 AUSTRALIA - SOUTH AUSTRALIA - Gulf St Vincent - Rogues Point - Artificial reef

Department of Planning, Transport and Infrastructure SA Notice 9/2017

An artificial reef is being developed in an area bounded by the following positions:

34° 30'.63 S 137° 53'.95 E

34° 30'.63 S 137° 54'.12 E

34° 30'.47 S 137° 54'.13 E

34° 30'.47 S 137° 53'.95 E.

A lit raft exists in position 34° 30'.59 S 137° 53'.99 E.

Chart temporarily affected - Aus 781

291(T)/2021 AUSTRALIA - SOUTH AUSTRALIA - Port Adelaide - Shoaling

Department for Transport, Energy and Infrastructure SA Notice 38/2007

Silting has resulted in width restrictions being imposed in the main channel of the Port Adelaide River between No 40 beacon (34° 47'.86 S 138° 30'.79 E) and No 41 beacon (34° 48'.52 S 138° 30'.77 E).

Mariners should avoid the western side of the main channel and navigate with caution in this part of the River as the available navigable channel is now only 90 metres wide measured from the eastern edge.

Mariners intending to transit this section should contact the Manager Marine Operations, Flinders Ports Pty Ltd on (08) 8447 0622 to confirm maximum widths.

Chart temporarily affected - Aus 130

803(T)/2021 AUSTRALIA - SOUTH AUSTRALIA - Gulf St Vincent - Investigator Strait to Adelaide - Scientific instruments

Former Notice - 771(T)/2021 is cancelled

Department for Infrastructure and Transport SA Notice 25(T)/2021

Special light buoys, *Fl. Y.2s*, exist in the following positions:

34° 51'.30 S 138° 21'.00 E

35° 01'.50 S 138° 27'.00 E.

An unlit special buoy exists in position 35° 34'.20 S 136° 55'.53 E.

Chart temporarily affected - Aus 130 - Aus 780 - Aus 781

587(T)/2022 AUSTRALIA - SOUTH AUSTRALIA - Wallaroo - Point Hughes - Harbour works

Department for Infrastructure and Transport SA Notice 18(T)/2022

Works associated with the construction of a new breakwater are in progress in the vicinity of position 33° 55'.88 S 137° 36'.29 E.

The works area is marked by special light buoys, *Fl. Y.4s*.

Mariners are advised to navigate with caution in the area.

Chart temporarily affected - Aus 777

998(T)/2022 AUSTRALIA - SOUTH AUSTRALIA - Two Hummock Point to Point Riley - Scientific instruments

Department for Infrastructure and Transport SA Notice 41(T)/2022

Scientific instruments exist on the seabed in the following positions:

32° 46'.43 S 137° 50'.38 E

33° 14'.56 S 137° 30'.23 E

33° 44'.84 S 137° 12'.20 E

33° 53'.17 S 137° 29'.01 E.

Mariners are advised to navigate with caution in the area

Chart temporarily affected - Aus 777 - Aus 778

42(T)/2023 AUSTRALIA - SOUTH AUSTRALIA - Spencer Gulf - Louth Bay to Arno Bay - Scientific instruments
Department for Infrastructure and Transport SA Notice 54(T)/2022

Special light buoys, *Fl.Y.2-5s*, exist in the following positions:

33° 56'.49 S 136° 37'.28 E

34° 01'.73 S 136° 36'.23 E

34° 34'.23 S 135° 59'.81 E

34° 34'.45 S 136° 07'.35 E.

Chart temporarily affected - Aus 776 - Aus 777

724(T)/2023 AUSTRALIA - SOUTH AUSTRALIA - Port Lincoln - Boston Bay - Light beacon destroyed
Department for Infrastructure and Transport SA Notice 44(T)/2023

The starboard lateral light beacon, *Fl.G.2s No3* (34° 41'.75 S 135° 52'.70 E), has been destroyed.

Mariners are advised to navigate with caution in the area.

Chart temporarily affected - Aus 134

1026(T)/2023 AUSTRALIA - SOUTH AUSTRALIA - Cape Buffon - Light unlit
Department for Infrastructure and Transport SA Notice 67(T)/2023

The light, *Fl.WR.2-5s 8/3M* (37° 33'.96 S 140° 06'.47 E), is unlit.

Chart temporarily affected - Aus 348

1027(T)/2023 AUSTRALIA - SOUTH AUSTRALIA - Port Bonython - Scientific instrument
Department for Infrastructure and Transport SA Notice 68(T)/2023

A subsurface scientific instrument, 1.5m above the seabed, exists in position 33° 00'.24 S 137° 47'.34 E.

Chart temporarily affected - Aus 136

168(T)/2024 AUSTRALIA - SOUTH AUSTRALIA - Kangaroo Island - American River - Wreck
Department for Infrastructure and Transport SA Notice 7(T)/2024

A stranded wreck marked by an isolated danger light buoy, *Fl(2)4s*, exists in position 35° 47'.22 S 137° 46'.51 E.

Mariners are advised to navigate with caution in the area.

Chart temporarily affected - Aus 780

337(T)/2024 AUSTRALIA - SOUTH AUSTRALIA - Denial Bay - Obstruction
Department for Infrastructure and Transport SA Notice 23(T)/2024

A lost anchor exists in position 32° 14'.87 S 133° 30'.18 E.

Mariners are advised to navigate with caution in the area.

Chart temporarily affected - Aus 120 - Aus 341

459(T)/2024 AUSTRALIA - SOUTH AUSTRALIA - Yorke Peninsula - Sultana Point - Wreck
Department for Infrastructure and Transport SA Notice 27(T)/2024

A stranded wreck marked by an isolated danger light buoy, *Fl(2)5s*, exists in position 35° 05'.95 S 137° 45'.00 E.

Mariners are advised to navigate with caution in the area.

Chart temporarily affected - Aus 780 - Aus 781

573(T)/2024 AUSTRALIA - SOUTH AUSTRALIA - Cape Hardy - Scientific instruments

Department for Infrastructure and Transport SA Notice 37(T)/2024

Subsurface scientific instruments, 3m above the seabed, exist in the following positions:

34° 10'.03 S 136° 20'.90 E

34° 11'.05 S 136° 20'.47 E

34° 12'.01 S 136° 19'.80 E.

Mariners are advised to navigate with caution in the area.

Chart temporarily affected - Aus 777

574(T)/2024 AUSTRALIA - SOUTH AUSTRALIA - Spencer Gulf - Point Lowly - Scientific instruments

Former Notice - 36(T)/2024 is cancelled

Department for Infrastructure and Transport SA Notice 33(T)/2024

Subsurface scientific instruments, 1.5m above the seabed, exist in positions 33° 00'.46 S 137° 47'.55 E and 32° 58'.76 S 137° 48'.02 E.

Mariners are advised to navigate with caution in the area.

Chart temporarily affected - Aus 136

622(T)/2024 AUSTRALIA - SOUTH AUSTRALIA - Port Adelaide - Light beacon destroyed

Department for Infrastructure and Transport SA Notice 40(T)/2024

The light beacon, *Q.10M Entrance* (34° 46'.82 S 138° 22'.53 E), has been destroyed; a special virtual AIS exists in situ.

Mariners are advised to navigate with caution in the area.

Chart temporarily affected - Aus 130 - Aus 485 - Aus 781

657(P)/2024 AUSTRALIA - SOUTH AUSTRALIA - Kangaroo Island - Kingscote - Shoaling

FPH Group

Latest survey indicates shoaler depths than those charted may exist in the vicinity of position 35° 37'.95 S 137° 38'.04E.

Mariners are advised to navigate with caution in the area.

Electronic Navigation Charts (ENCs) and Paper Charts will be updated in due course.

Chart which will be affected - Aus 780

724(T)/2024 AUSTRALIA - SOUTH AUSTRALIA - Spencer Gulf - Port Bonython - Light buoy off station

Department for Infrastructure and Transport SA Notice 50(T)/2024

The starboard lateral light buoy, *Fl.G.2s No5* (33° 02'.80 S 137° 45'.43 E), is off station.

Chart temporarily affected - Aus 136 - Aus 778

757(T)/2024 AUSTRALIA - SOUTH AUSTRALIA - Gulf St Vincent - Port Gawler - Scientific instrument

Department for Infrastructure and Transport SA Notice 55(T)/2024

A subsurface scientific instrument exists in position 34° 42'.67 S 138° 22'.58 E.

Mariners are advised to navigate with caution in the area.

Chart temporarily affected - Aus 130 - Aus 485 - Aus 781

758(T)/2024 AUSTRALIA - SOUTH AUSTRALIA - Gulf St Vincent - Largs Bay to Glenelg - Scientific instruments

Department for Infrastructure and Transport SA Notice 52(T)/2024

Light buoys, *Fl.Y.2.5s*, exist in the following positions:

34° 47'.98 S 138° 28'.78 E

34° 51'.30 S 138° 21'.02 E

34° 57'.28 S 138° 29'.30 E.

Mariners are advised to navigate with caution in the area.

Chart temporarily affected - Aus 130 - Aus 485 - Aus 781

830(T)/2024 AUSTRALIA - SOUTH AUSTRALIA - Port Bonython - Light buoy unlit

Department for Infrastructure and Transport SA Notice 64(T)/2024

The port lateral light buoy, *Fl.R.2s No8* (33° 01'.29 S 137° 46'.28 E), is unlit.

Chart temporarily affected - Aus 136 - Aus 778

884(T)/2024 AUSTRALIA - SOUTH AUSTRALIA - Port Bonython - Light beacon unlit

Department for Infrastructure and Transport SA Notice 68(T)/2024

The east cardinal light beacon, *Q(3)10s* (33° 02'.10 S 137° 44'.80 E), is unlit.

Mariners are advised to navigate with caution in the area.

Chart temporarily affected - Aus 136 - Aus 778

921(T)/2024 AUSTRALIA - SOUTH AUSTRALIA - Port Adelaide - Scientific instruments

Department for Infrastructure and Transport SA Notice 72(T)/2024

A subsurface scientific instrument, 0.5m above the seabed, exists in position 34° 44'.16 S 138° 20'.37 E.

Special light buoys, *Fl.Y.2s*, exist in positions 34° 40'.68 S 138° 25'.06 E and 34° 42'.56 S 138° 26'.80 E.

Mariners are advised to navigate with caution in the area.

Chart temporarily affected - Aus 130 - Aus 485 - Aus 781

1000(T)/2024 AUSTRALIA - SOUTH AUSTRALIA - Cape Hardy - Geotechnical operations

Department for Infrastructure and Transport SA Notice 54(T)/2024

Geotechnical operations are in progress in the vicinity of position 34° 10'.97 S 136° 19'.83 E.

Mariners are advised to navigate with caution in the area.

Chart temporarily affected - Aus 777

1001(T)/2024 AUSTRALIA - SOUTH AUSTRALIA - Yarraville Shoals - Survey operations westwards

Department for Infrastructure and Transport SA Notice 81(T)/2024

A vessel is conducting geophysical survey operations in an area bounded by the following positions:

33° 14'.08 S 137° 25'.82 E

33° 14'.22 S 137° 29'.07 E

33° 15'.69 S 137° 28'.98 E

33° 15'.63 S 137° 25'.28 E.

Mariners are advised to navigate with caution in the area.

Chart temporarily affected - Aus 778

59(T)/2025 AUSTRALIA - SOUTH AUSTRALIA - Gulf St Vincent - Port Gawler - Scientific instrument

Former Notice - 305(T)/2024 is cancelled

Department for Infrastructure and Transport SA Notice 82(T)/2024

A subsurface scientific instrument exists on the seabed, with a minimum safe clearance of 2m, in position 34° 41'.89 S 138° 24'.83 E.

Mariners are advised to navigate with caution in the area.

Chart temporarily affected - Aus 781

60(T)/2025 AUSTRALIA - SOUTH AUSTRALIA - Point Riley to Shoalwater Point - Survey operations
Fugro

On or about 20 January 2025, vessel *Empress Prowler*, with a towed array, will be conducting survey operations in areas bounded by the following positions:

33° 52'.31 S 137° 36'.51 E
33° 51'.01 S 137° 35'.40 E
33° 50'.83 S 137° 35'.08 E
33° 51'.63 S 137° 34'.25 E
33° 51'.89 S 137° 34'.76 E;
and
33° 39'.50 S 137° 12'.92 E
33° 41'.39 S 137° 15'.12 E
33° 42'.03 S 137° 16'.28 E
33° 41'.26 S 137° 17'.30 E
33° 40'.44 S 137° 15'.75 E.

The vessel will display appropriate lights and shapes and will monitor VHF Ch 12 and Ch 16.

Mariners are advised to navigate with caution in the area. 500m clearance requested.

Chart temporarily affected - Aus 777 - Aus 778

61(T)/2025 AUSTRALIA - SOUTH AUSTRALIA - Point Riley to Shoalwater Point - Survey operations
Fugro

Vessel *Ocean Dynasty*, with a towed array, is conducting survey operations in an area bounded by the following positions:

33° 51'.77 S 137° 34'.42 E
33° 50'.95 S 137° 35'.25 E
33° 41'.08 S 137° 17'.08 E
33° 41'.99 S 137° 16'.21 E.

The vessel will display appropriate lights and shapes and will monitor VHF Ch 12 and Ch 16.

Mariners are advised to navigate with caution in the area. 500m clearance requested.

Chart temporarily affected - Aus 485 - Aus 777 - Aus 778 - Aus 4060 (INT 60) - Aus 4709 (INT 709)

107(T)/2025 AUSTRALIA - SOUTH AUSTRALIA - Kangaroo Island - Tide gauges, buoys southward
Guardian Geomatics

Subsurface tide gauges marked by light buoys, *Fl.Y.5s*, exist in the following positions:

35° 54'.1 S 137° 52'.6 E
36° 06'.2 S 137° 52'.7 E
36° 12'.1 S 137° 36'.5 E
36° 15'.4 S 137° 22'.5 E
36° 25'.3 S 137° 20'.9 E
36° 22'.1 S 137° 36'.5 E
36° 07'.2 S 137° 24'.2 E
36° 56'.4 S 137° 39'.0 E
36° 16'.5 S 137° 53'.3 E

Mariners are advised to navigate with caution in the area.

Chart temporarily affected - Aus 346 - Aus 485

VICTORIA

895(P)/2020 AUSTRALIA - VICTORIA - Port Welshpool to McLoughlins Entrance - Shoaling Gippsland Ports

Latest survey shows shoaling and channel realignment in the following channels:

Middle Ground Channel (38° 42'.5 S 146° 31'.5 E)

Snake Channel (38° 44'.4 S 146° 37'.0 E)

Midge Channel (38° 41'.8 S 146° 39'.9 E)

Port Albert Channel (38° 41'.5 S 146° 41'.2 E)

Kate Kearney Channel (38° 41'.7 S 146° 43'.0 E)

Kate Kearney Entrance (38° 41'.5 S 146° 45'.1 E)

Tarra Channel (38° 40'.8 S 146° 45'.7 E)

Boat Harbour Channel (38° 40'.4 S 146° 48'.4 E)

Pelican Channel (38° 39'.3 S 146° 48'.7 E)

Manns Beach Channel (38° 38'.8 S 146° 47'.4 E)

Manns Channel (38° 40'.5 S 146° 49'.6 E)

Oyster Bed Channel (38° 38'.5 S 146° 51'.2 E)

McLoughlins Entrance (38° 37'.8 S 146° 53'.0 E).

Mariners are advised to navigate with caution in the area.

Charts will be updated in due course.

Chart which will be affected - Aus 181

350(T)/2021 AUSTRALIA - VICTORIA - Port Phillip - Corio Bay - Scientific instruments

Victorian Regional Channels Authority Notice 93(T)2021

Scientific instruments exist on the seabed in the following positions:

38° 05'.17 S 144° 23'.31 E

38° 05'.35 S 144° 24'.20 E.

Chart temporarily affected - Aus 153 - Aus 157

409(T)/2021 AUSTRALIA - VICTORIA - Port Phillip - Corio Bay - Scientific instrument

Victorian Regional Channels Authority Notice 310(T)/2019

A scientific instrument marked by a special light buoy, *Fl. Y.*, exists on the seabed in position 38° 05'.07 S 144° 23'.25 E.

Chart temporarily affected - Aus 157

413(T)/2021 AUSTRALIA - VICTORIA - Port Phillip - Corio Bay - Light buoys; AIS

Victorian Regional Channels Authority Notices 16(T)/2018, 17(T)/2018, 72(T)/2018

Starboard lateral pillar light buoys exist as follows:

<i>Position</i>	<i>Remarks</i>
38° 06'.01 S 144° 22'.92 E	<i>F.Iso.G.3s TB2</i>
38° 06'.65 S 144° 22'.34 E	<i>F.Iso.G.3s TB1</i>

Starboard lateral virtual AIS also exist at the above positions.

Chart temporarily affected - Aus 157

618(T)/2021 AUSTRALIA - VICTORIA - Port Phillip - Half Moon Bay - Obstructions

Parks Victoria Notices 215(T), 218(T)/2021

The jetty (37° 58'.09 S 145° 00'.58 E) has been demolished. Shoaling and obstructions may exist in the area north of the jetty.

Mariners are advised to navigate with caution in the area.

Chart temporarily affected - Aus 155

664(T)/2021 AUSTRALIA - VICTORIA - Western Port - Stony Point to Sandy Point - Shoaling

Victorian Regional Channels Authority Notice 199/2019

Shoaling exists in the vicinity of the following positions:

<i>Position</i>	<i>Least depth</i>	<i>Remarks</i>
38°25'.5 S 145° 13'.8 E	13.6m	Extending up to 100m into shipping channel
38°22'.8 S 145° 14'.7 E	13.2m	Extending up to 50m into shipping channel
38°21'.9 S 145° 14'.4 E	13.5m	Extending up to 40m into shipping channel
38°22'.1 S 145° 14'.3 E	13.8m	Extending up to 10m into shipping channel

Mariners are advised to navigate with caution in the area.

Chart temporarily affected - Aus 151**665(T)/2021 AUSTRALIA - VICTORIA - Western Port - Hanns Inlet - Light beacons unlit**

HMAS Cerberus

The light beacons, *Fl.G.8s* (38° 23'.26 S 145° 13'.95 E) and *Fl.R.8s* (38° 23'.30 S 145° 13'.94 E) are unlit.**Chart temporarily affected - Aus 151****859(T)/2021 AUSTRALIA - VICTORIA - Western Port - Crib Point - Exclusion zone**

Maritime Safety Victoria Notice 265(T)/2021

The Ex-HMAS OTAMA (Oberon class submarine) located 800 metres north of Crib Point jetty has been relocated to position 38° 20'.66 S 145° 13'.27 E, with a 200 metre exclusion zone.

A 200 metre exclusion zone remains at its previous location (38° 20'.48 S 145° 13'.45 E).

Mariners are advised to navigate with caution in the area.

Chart temporarily affected - Aus 151**1033(T)/2021 AUSTRALIA - VICTORIA - Port Phillip - Beaumaris Bay - Buoy**

Parks Victoria Notice 353(T)/2021

A special buoy exists in position 37° 59'.50 S 145° 03'.56 E.

Chart temporarily affected - Aus 155**294(T)/2022 AUSTRALIA - VICTORIA - Port Phillip - Point Wilson - Exclusion zone***Former Notice - 1078(T)/2021 is cancelled*

Victorian Regional Channels Authority Notice 239/2020, Parks Victoria Notice 104/2022

A 300m exclusion zone exists outwards from the centreline of Point Wilson Pier (38° 05'.54 S 144° 31'.48 E). It is marked by special light buoys, *Iso.2s*, in the following positions:

38° 05'.51 S 144° 30'.73 E
38° 05'.68 S 144° 31'.32 E
38° 05'.84 S 144° 31'.86 E
38° 05'.89 S 144° 32'.45 E
38° 05'.64 S 144° 32'.48 E
38° 05'.55 S 144° 32'.04 E
38° 05'.38 S 144° 31'.47 E
38° 05'.20 S 144° 30'.93 E.

Only vessels involved in the remediation works are permitted to enter the area.

Mariners are advised to navigate with caution in the area.

Chart temporarily affected - Aus 143 - Aus 157**630(T)/2022 AUSTRALIA - VICTORIA - Cape Duquesne - Scientific instruments**

Maritime Safety Victoria Notice 165(T)/2019

Scientific instruments exist as follows:

<i>Position</i>	<i>Remarks</i>
-----------------	----------------

38° 24'.52 S 141° 16'.26 E	25m below surface
38° 24'.24 S 141° 17'.48 E	84m below surface
38° 24'.10 S 141° 18'.04 E	76m below surface
38° 23'.97 S 141° 18'.60 E	69m below surface
38° 23'.83 S 141° 19'.16 E	70m below surface
38° 23'.69 S 141° 19'.73 E	67m below surface
38° 23'.56 S 141° 20'.25 E	67m below surface
38° 23'.44 S 141° 20'.73 E	61m below surface
38° 23'.34 S 141° 21'.18 E	50m below surface
38° 23'.24 S 141° 21'.57 E	30m below surface
38° 23'.15 S 141° 21'.91 E	18m below surface.

Chart temporarily affected - Aus 140 - Aus 348 - Aus 349

747(T)/2022 AUSTRALIA - VICTORIA - Ninety Mile Beach - Traffic separation scheme southwestwards

Australian Maritime Safety Authority

Decommissioning of oil and gas infrastructure will take place at Blackback Prod Well (38° 32'.42 S 148° 33'.24 E), Gudgeon Well (38° 30'.82 S 148° 28'.17 E) and Terakihi Well (38° 30'.27 S 148° 32'.89 E).

New temporary shipping fairways and a separation zone have been established to keep transiting ships away from decommissioning activities. The new shipping fairways and separation zone are bound by the following positions:

Northeast bound lane	38° 36'.941 S	148° 45'.842 E
	38° 39'.507 S	148° 48'.047 E
	38° 44'.600 S	148° 23'.000 E
	38° 42'.034 S	148° 20'.795 E.
Southwest bound lane	38° 33'.407 S	148° 42'.545 E
	38° 35'.750 S	148° 44'.746 E
	38° 40'.844 S	148° 19'.699 E
	38° 38'.500 S	148° 17'.500 E.
Separation zone	38° 35'.750 S	148° 44'.746 E
	38° 36'.941 S	148° 45'.842 E
	38° 42'.034 S	148° 20'.795 E
	38° 40'.844 S	148° 19'.699 E.

The fairways and separation zone come into effect on 1 August 2022 at 0000 UTC and will remain in place until further notice.

Mariners should follow the appropriate traffic lane and navigate in the general direction of traffic flow for that lane. They should, as far as practicable, keep clear of the separation zone.

Due to an increased risk of collision, particularly with vessels that may be restricted in their ability to manoeuvre, mariners should keep a good look out and take early action to avoid collisions.

Note: For e-notice users, please see full edition for map.

IMO-adopted Traffic Separation Scheme (TSS)
Bass Strait, Victoria, and temporary shipping fairway proposal

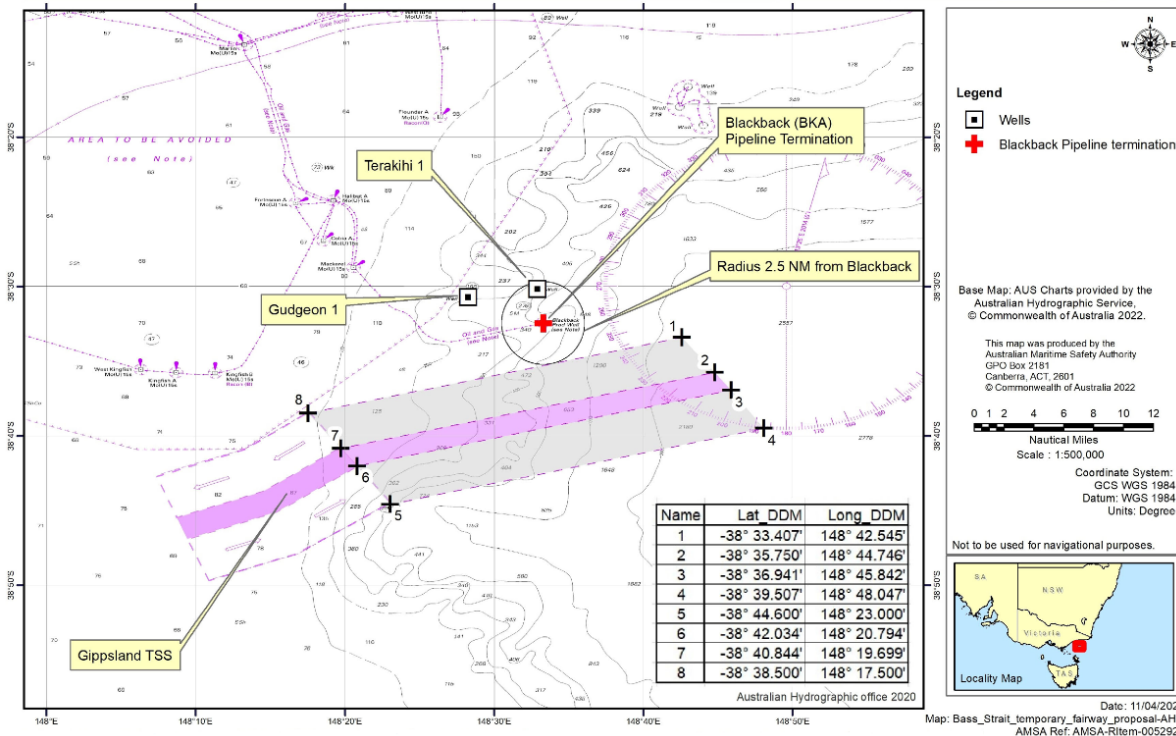


Chart temporarily affected - Aus 357 - Aus 487

754(T)/2022 AUSTRALIA - BASS STRAIT - Racon non operational
Australian Maritime Safety Authority Auscoast Warning 171/2021

The racon at the *Flounder A* platform (38° 18'.65 S 148° 26'.36 E) is non operational.

Chart temporarily affected - Aus 357 - Aus 487

804(T)/2022 AUSTRALIA - VICTORIA - Western Port - Warneet - Jetty closed
Parks Victoria Notice 327/2022

The jetty (38° 13'.66 S 145° 18'.35 E) has been deemed unsafe for public use and has been closed.

Temporary berthing is available at the floating pontoon.

Chart temporarily affected - Aus 151

112(T)/2023 AUSTRALIA - VICTORIA - Ninety Mile Beach - Virtual AIS southeastwards
Australian Maritime Safety Authority

Special virtual AIS have been established in the Gippsland region to denote an area of oil and gas decommissioning work in the following positions:

- 38° 23'.54 S 148° 36'.38 E
- 38° 24'.59 S 148° 30'.93 E
- 38° 25'.75 S 148° 25'.49 E
- 38° 29'.10 S 148° 36'.38 E
- 38° 31'.31 S 148° 25'.49 E
- 38° 34'.65 S 148° 36'.38 E
- 38° 35'.76 S 148° 30'.93 E
- 38° 36'.87 S 148° 25'.49 E.

Transiting ships are requested to keep clear of the area marked by the special virtual AIS.

ANTM 747(T)/2022 refers.

Chart temporarily affected - Aus 357 - Aus 487

465(T)/2023 AUSTRALIA - VICTORIA - Port Phillip Bay - Wreck

Ports Victoria Notice 218(T)/2023

A wreck, least depth 11_4m , exists in position $37^{\circ} 55'.93$ S $144^{\circ} 56'.86$ E.

Chart temporarily affected - Aus 143 - Aus 155

589(T)/2023 AUSTRALIA - VICTORIA - Port Phillip - South Channel - Light beacon destroyed

Ports Victoria Notice 272(T)/2023

The port lateral light beacon, *Fl.R.3s* ($38^{\circ} 18'.88$ S $144^{\circ} 48'.86$ E), has been destroyed; a port lateral virtual AIS and a port lateral light buoy, *Fl.R.3s*, exist in situ.

Chart temporarily affected - Aus 143

834(T)/2023 AUSTRALIA - VICTORIA - Port Phillip - Scientific instruments

Former Notice - 82(T)/2023 is cancelled

Ports Victoria Notice 365(T)/2023

Special light buoys, *Fl.Y.2.5s*, exist in the following positions:

$37^{\circ} 58'.72$ S $144^{\circ} 59'.73$ E

$37^{\circ} 59'.10$ S $144^{\circ} 46'.51$ E

$38^{\circ} 03'.81$ S $144^{\circ} 52'.01$ E

$38^{\circ} 08'.16$ S $144^{\circ} 45'.18$ E

$38^{\circ} 09'.73$ S $145^{\circ} 03'.26$ E

$38^{\circ} 18'.09$ S $144^{\circ} 52'.36$ E.

Chart temporarily affected - Aus 143 - Aus 155 - Aus 157

948(T)/2023 AUSTRALIA - VICTORIA - Port Phillip - Mornington - Light beacon removed

Former Notice - 871(T)/2023 is cancelled

Parks Victoria Notice 427(T)/2021, 376/2023, 424(T)/2023

The west cardinal light beacon, *VQ(9)10s* ($38^{\circ} 13'.42$ S $145^{\circ} 01'.58$ E), has been removed; a west cardinal light buoy, *VQ(9)10s*, exists in situ.

This buoy replaces the destroyed west cardinal light beacon. Due to local conditions, this buoy is frequently off station.

Chart temporarily affected - Aus 143

1033(T)/2023 AUSTRALIA - VICTORIA - Port Phillip - Point Cole - Light buoy off station westwards

Parks Victoria Notice 452(T)/2023

The special light buoy, *Fl(4)Y.10s RMYSF* ($37^{\circ} 53'.59$ S $144^{\circ} 56'.30$ E), is off station.

Chart temporarily affected - Aus 155

80(T)/2024 AUSTRALIA - VICTORIA - Port Phillip - Sandringham - Light buoy off station

Parks Victoria Notice 20(T)/2024

The special light buoy, *Fl(4)Y.10s SYC1* ($37^{\circ} 57'.81$ S $144^{\circ} 58'.88$ E), is off station.

Mariners are advised to navigate with caution in the area.

Chart temporarily affected - Aus 155

126(T)/2024 AUSTRALIA - VICTORIA - Ninety Mile Beach - Scientific instrument eastwards

Australian Maritime Safety Authority Auscoast Warning 45/2024, Esso Australia Pty Ltd

A special light buoy, *Fl(5)Y.20s*, exists in position $38^{\circ} 11'.78$ S $148^{\circ} 23'.65$ E.

Chart temporarily affected - Aus 357

128(T)/2024 AUSTRALIA - VICTORIA - Port Phillip - Drilling operations
Ports Victoria Notice 48(T)/2024

Vessel *Fathom II* is conducting drilling operations in the following positions:

38° 08'.42 S 144° 21'.79 E
38° 02'.18 S 144° 41'.95 E
37° 56'.05 S 144° 49'.63 E
38° 07'.12 S 144° 44'.00 E
38° 05'.97 S 144° 43'.52 E
38° 00'.05 S 144° 53'.18 E
37° 52'.69 S 144° 54'.79 E
37° 52'.21 S 144° 56'.03 E.

The vessel will monitor VHF Ch12.

Mariners are advised to navigate with caution in the area with minimal wash and to keep a minimum passing distance of 50m.

Chart temporarily affected - Aus 143 - Aus 155 - Aus 157

197(T)/2024 AUSTRALIA - VICTORIA - Port Phillip - Chelsea - Beacon destroyed

Former Notice - 1032(T)/2021 is cancelled
Parks Victoria Notice 333(T)/2021, 79/2024

The special beacon (38° 03'.47 S 145° 06'.74 E) has been destroyed; a special conical buoy exists in situ.

Chart temporarily affected - Aus 143

340(T)/2024 AUSTRALIA - VICTORIA - Port Phillip - Sorrento - Harbour works

Parks Victoria Notice 155(T)/2024

Construction works are in progress at Sorrento Ferry Terminal (38° 20'.16 S 144° 44'.75 E).

An exclusion zone exists in an area bounded by the coast and the following:

<i>Position</i>	<i>Remarks</i>
38° 20'.20 S 144° 44'.72 E	marked by buoy
38° 20'.21 S 144° 44'.74 E	marked by buoy
38° 20'.21 S 144° 44'.76 E	marked by buoy
38° 20'.22 S 144° 44'.80 E	marked by buoy
38° 20'.23 S 144° 44'.83 E	marked by buoy
38° 20'.16 S 144° 44'.78 E.	

Only vessels involved in the works, Searoad Ferries and Parks Victoria officers are permitted to enter the area.

All hazards to navigation will display appropriate lights and shapes.

Mariners are advised to navigate with caution in the area.

Chart temporarily affected - Aus 143

376(T)/2024 AUSTRALIA - VICTORIA - Ninety Mile Beach - Platform unlit eastwards

Australian Maritime Safety Authority Auscoast Warning 24/2024

The *Kingfish B* platform, *Mo(U)15s* (38° 35'.82 S 148° 11'.28 E), is unlit.

Chart temporarily affected - Aus 357 - Aus 487 - Aus 4601 (INT 601)

425(T)/2024 AUSTRALIA - VICTORIA - Western Port - North Arm - Scientific instruments

Parks Victoria Notice 180(T)/2024

Special light buoys, *Fl. Y. 3s*, exist in the following positions:

38° 15'.95 S 145° 16'.56 E
38° 16'.56 S 145° 20'.53 E
38° 16'.79 S 145° 14'.23 E
38° 21'.34 S 145° 13'.28 E

38° 24'.04 S 145° 15'.78 E.

Chart temporarily affected - Aus 151

504(T)/2024 AUSTRALIA - VICTORIA - Port Phillip - Point Wilson Bank - Light buoy off station
Ports Victoria Notice 248(T)/2024

The special light buoy, *Fl.Y.6s* (38° 06'.10 S 144° 31'.24 E), is off station.

Mariners are advised to navigate with caution in the area.

Chart temporarily affected - Aus 157

625(T)/2024 AUSTRALIA - VICTORIA - Western Port - North Arm - Scientific instrument
Ports Victoria Notice 302(T)/2024

A subsurface scientific instrument, 1m above the seabed, exists in position 38° 19'.79 S 145° 13'.93 E.

Mariners are advised to navigate with caution in the area.

Chart temporarily affected - Aus 151

659(T)/2024 AUSTRALIA - VICTORIA - Corner Inlet - Scientific instruments eastwards
Former Notice - 169(T)/2024 is cancelled
RPS Group

Subsurface scientific instruments, 20m below the surface, exist in the following positions:

38° 45'.19 S 147° 05'.63 E

38° 50'.96 S 147° 17'.54 E

38° 55'.81 S 146° 50'.01 E

39° 03'.61 S 147° 39'.05 E

39° 21'.71 S 146° 58'.05 E.

Chart temporarily affected - Aus 357 - Aus 487 - Aus 802

763(T)/2024 AUSTRALIA - VICTORIA - Port Phillip - Sandringham - Light beacon unlit
Parks Victoria Notice 121(T)/2019, 285(T)/2019, 368(T)/2024

The starboard lateral light beacon, *Fl(2)G.5s 5m 4M* (37° 56'.48 S 144° 59'.56 E), is unlit; a starboard lateral buoy exists in position 37° 56'.51 S 144° 59'.53 E.

Chart temporarily affected - Aus 143 - Aus 155

885(T)/2024 AUSTRALIA - VICTORIA - Corner Inlet - Survey operations eastwards
Ocius Technology

On or about 15 November 2024, an unmanned surface vehicle (USV) will be conducting survey operations in an area bounded by the following positions:

38° 58'.94 S 146° 43'.11 E

38° 52'.33 S 146° 56'.57 E

38° 46'.55 S 146° 51'.10 E

38° 52'.00 S 146° 37'.68 E.

Mariners are advised to navigate with caution in the area.

Chart temporarily affected - Aus 181 - Aus 357 - Aus 487 - Aus 802

933(P)/2024 AUSTRALIA - VICTORIA - Port Phillip - Popes Eye Bank - Shoaling southwards
Port of Melbourne Operations

Latest survey indicates shoaler depths than those charted exist in the vicinity of position 38° 17'.0 S 144° 42'.2 E.

Mariners are advised to navigate with caution in the area.

Electronic Navigation Charts (ENCs) have been updated. Paper Charts will be updated in due course.

Chart which will be affected - Aus 143 - Aus 144

934(T)/2024 AUSTRALIA - VICTORIA - Port Phillip - Exclusion zone

Ports Victoria Notice 483(T)/2024

Due to debris on the sea floor, a 20m exclusion zone exists around No9 light beacon (37° 53'.19 S 144° 55'.75 E) extending to the north, east and south.

Mariners are advised to navigate with caution in the area.

Chart temporarily affected - Aus 155

1003(T)/2024 AUSTRALIA - VICTORIA - Ninety Mile Beach - Drill rig

Former Notice - 928(T)/2024 is cancelled

MODU *Valaris 107*

Drill rig *Valaris 107* is conducting drilling operations in position 38° 31'.1 S 147° 50'.3 E.

Chart temporarily affected - Aus 357 - Aus 487

1004(T)/2024 AUSTRALIA - VICTORIA - Port Campbell - Subsea operations southwards

Woodside Energy Ltd

On or about 23 December 2024, vessel *Seven Sisters* will be conducting subsea operations associated with the decommissioning of the Minerva Field between positions 38° 37'.41 S 142° 57'.89 E and 38° 43'.12 S 142° 57'.73 E.

Mariners are advised to navigate with caution in the area.

Chart temporarily affected - Aus 349

1005(T)/2024 AUSTRALIA - VICTORIA - Port Phillip - Capel Sound - Moorings

Parks Victoria Notice 511(T)/2024

Temporary moorings exist in the vicinity of position 38° 20'.48 S 144° 50'.78 E.

Mariners area advised to navigate with caution in te area.

Chart temporarily affected - Aus 143

1010(T)/2024 AUSTRALIA - VICTORIA - Port Phillip - Ricketts Point - Beacon destroyed

Former Notice - 831(T)/2024 is cancelled

Parks Victoria Notice 507(T)/2024

The special beacon (37° 59'.35 S 145° 01'.18 E) has been destroyed; a special buoy exists in situ.

Mariners are advised to navigate with caution in the area.

Chart temporarily affected - Aus 155

62(T)/2025 AUSTRALIA - VICTORIA - Ninety Mile Beach - Geotechnical operations

Former Notice - 927(T)/2024 is cancelled

Safe Transport Victoria Notice 2(T)/2025

MV *Samson Explorer* is conducting subsea geotechnical and diving operations in an area bounded by the coast and the following positions:

38° 14'.45 S 147° 21'.94 E

38° 15'.83 S 147° 23'.67 E

38° 15'.72 S 147° 25'.25 E

38° 14'.44 S 147° 25'.10 E

38° 14'.08 S 147° 22'.40 E.

Mariners are advised to navigate with caution in the area. 500m clearance requested.

Chart temporarily affected - Aus 357 - Aus 487

63(T)/2025 AUSTRALIA - VICTORIA - Ninety Mile Beach - Survey operations

Former Notice - 926(T)/2024 is cancelled
Safe Transport Victoria Notice 6(T)/2025

MV *Offshore Surveyor*, with a 200m towed array, is conducting a geophysical survey in an area bounded the following positions:

38° 31'.17 S 147° 24'.22 E
38° 23'.89 S 147° 14'.83 E
38° 27'.56 S 147° 10'.21 E
38° 34'.96 S 147° 19'.75 E
38° 41'.91 S 147° 11'.52 E
38° 51'.34 S 147° 24'.51 E
38° 37'.26 S 147° 41'.11 E
38° 27'.86 S 147° 28'.13 E.

The vessel will monitor VHF Ch 16.

Mariners are advised to navigate with caution in the area. 500m clearance requested.

Chart temporarily affected - Aus 357 - Aus 487 - Aus 802

64(T)/2025 AUSTRALIA - VICTORIA - Port Campbell to Cape Paterson - Survey operations southwards

Former Notice - 930(T)/2024 is cancelled
Beach Energy Limited

MV *Offshore Solution* is conducting a geophysical survey and geotechnical sampling in areas bounded by the following positions:

38° 42'.44 S 143° 02'.98 E
38° 48'.02 S 143° 05'.10 E
39° 37'.32 S 143° 14'.13 E
39° 49'.91 S 143° 14'.13 E
38° 49'.91 S 142° 53'.92 E
39° 37'.32 S 142° 53'.92 E
39° 04'.93 S 142° 35'.07 E
38° 54'.91 S 142° 35'.08 E
38° 42'.46 S 142° 42'.99 E;
and
40° 04'.91 S 145° 10'.08 E
40° 04'.91 S 145° 55'.13 E
39° 44'.90 S 145° 55'.10 E
39° 44'.91 S 145° 10'.08 E.

Mariners are advised to navigate with caution in the area. 500m clearance requested.

Chart temporarily affected - Aus 349 - Aus 487

67(T)/2025 AUSTRALIA - VICTORIA - Portland Bay to Childers Cove - Scientific instruments southwards

RPS Group

Subsurface scientific instruments, 15m above seabed, exist in the following positions:

38° 30'.85 S 141° 49'.17 E
38° 33'.86 S 142° 18'.53 E
38° 40'.79 S 142° 02'.60 E
38° 50'.39 S 142° 35'.64 E.

Mariners are advised to navigate with caution in the area.

Chart temporarily affected - Aus 140 - Aus 349

109(T)/2025 AUSTRALIA - VICTORIA - Ninety Mile Beach - Survey operations

Former Notice - 929(T)/2024 is cancelled
Safe Transport Victoria NTM 040(T)/2025

An unmanned surface vehicle (USV) will be conducting survey operations in areas bounded by the coast and the following positions:

38° 27'.32 S 147° 05'.64 E

38° 33'.63 S 147° 03'.27 E
38° 27'.29 S 147° 11'.17 E
38° 25'.19 S 147° 08'.40 E;
and
38° 23'.21 S 147° 10'.89 E
38° 25'.34 S 147° 13'.52 E
38° 19'.48 S 147° 21'.06 E
38° 22'.02 S 147° 12'.48 E.

Mariners are advised to navigate with caution in the area.

Chart temporarily affected - Aus 357 - Aus 487 - Aus 4060 (INT 60) - Aus 4601 (INT 601)

TASMANIA

627(T)/2016 AUSTRALIA - TASMANIA - Pipe Clay Head to Pitt Water - Scientific instruments

Former Notice - 309(T)/2014 is cancelled

University of Tasmania

Subsurface scientific instruments exist in the following positions:

42° 48'.25 S 147° 29'.91 E
42° 48'.29 S 147° 31'.42 E
42° 48'.43 S 147° 30'.02 E
42° 49'.18 S 147° 34'.71 E
42° 50'.70 S 147° 33'.57 E
42° 50'.74 S 147° 35'.11 E
42° 50'.90 S 147° 36'.91 E
42° 51'.05 S 147° 32'.08 E
42° 51'.33 S 147° 35'.89 E
42° 51'.69 S 147° 34'.85 E
42° 51'.82 S 147° 30'.92 E
42° 51'.82 S 147° 33'.36 E
42° 52'.35 S 147° 32'.10 E
42° 52'.70 S 147° 36'.29 E
42° 52'.94 S 147° 34'.16 E
42° 53'.24 S 147° 31'.16 E
42° 53'.79 S 147° 32'.67 E
42° 53'.88 S 147° 37'.33 E
42° 54'.20 S 147° 35'.44 E
42° 54'.37 S 147° 30'.53 E
42° 54'.47 S 147° 40'.80 E
42° 54'.67 S 147° 33'.87 E
42° 54'.92 S 147° 40'.78 E
42° 55'.13 S 147° 31'.80 E
42° 55'.36 S 147° 40'.76 E
42° 55'.81 S 147° 40'.74 E
42° 56'.99 S 147° 39'.68 E
42° 57'.04 S 147° 38'.01 E
42° 57'.15 S 147° 39'.22 E
42° 57'.15 S 147° 37'.41 E
42° 57'.28 S 147° 36'.79 E
42° 57'.40 S 147° 36'.20 E
42° 57'.51 S 147° 35'.59 E
42° 57'.62 S 147° 34'.99 E
42° 57'.73 S 147° 34'.44 E
42° 57'.86 S 147° 33'.85 E
42° 57'.96 S 147° 33'.30 E.

Chart temporarily affected - Aus 171 - Aus 796

263(T)/2018 AUSTRALIA - TASMANIA - Devonport - Shoaling

HydroSurvey Australia

Shoaling exists in the Mersey River between positions 41° 11'.20 S 146° 21'.98 E and 41° 11'.48 S 146° 22'.10 E.

Mariners are advised to navigate with caution in the area.

Chart temporarily affected - Aus 164

522(T)/2020 AUSTRALIA - TASMANIA - D'Entrecasteaux Channel - Tower Bay - Harbour works; light buoys

Marine and Safety Tasmania Notice M98/2020

Mooring works are in progress, marked by special light buoys as follows:

<i>Position</i>	<i>Remarks</i>
43° 23'.38 S 147° 02'.34 E	<i>Fl. Y. 4s</i>
43° 23'.46 S 147° 02'.27 E	<i>Fl. Y. 4s</i>
43° 23'.36 S 147° 01'.98 E	
43° 23'.28 S 147° 02'.05 E	

Chart temporarily affected - Aus 173

673(T)/2021 AUSTRALIA - TASMANIA - Maria Island - Scientific instruments
Marine and Safety Tasmania

Subsurface scientific instruments exist on the seabed in the following positions:

42° 40'.08 S 147° 58'.04 E
42° 39'.99 S 147° 58'.60 E
42° 39'.91 S 147° 59'.16 E
42° 39'.82 S 147° 59'.72 E
42° 39'.74 S 148° 00'.28 E
42° 39'.08 S 148° 10'.40 E
42° 39'.28 S 148° 10'.92 E
42° 39'.48 S 148° 11'.44 E
42° 39'.68 S 148° 11'.96 E
42° 39'.88 S 148° 12'.49 E
42° 40'.08 S 148° 13'.01 E
42° 40'.28 S 148° 13'.53 E
42° 40'.48 S 148° 14'.05 E
42° 40'.68 S 148° 14'.57 E
42° 40'.88 S 148° 15'.10 E
42° 41'.08 S 148° 15'.62 E
42° 41'.28 S 148° 16'.14 E
42° 41'.48 S 148° 16'.66 E
42° 41'.68 S 148° 17'.18 E
42° 41'.88 S 148° 17'.71 E
42° 42'.08 S 148° 18'.23 E
42° 42'.28 S 148° 18'.75 E
42° 42'.48 S 148° 19'.27 E
42° 42'.68 S 148° 19'.79 E
42° 42'.87 S 148° 20'.32 E
42° 43'.07 S 148° 20'.84 E
42° 43'.26 S 148° 21'.26 E.

Chart temporarily affected - Aus 766 - Aus 797

677(T)/2021 AUSTRALIA - TASMANIA - North West Bay - Mooring area
Marine and Safety Tasmania Notice M106/2021

A mooring area, marked by special light buoys, exists in an area bounded by the following positions:

43° 02'.75 S 147° 17'.91 E
43° 02'.66 S 147° 18'.04 E
43° 02'.74 S 147° 18'.15 E
43° 02'.82 S 147° 18'.00 E.

Mariners are advised to navigate with caution in the area.

Chart temporarily affected - Aus 171

722(T)/2021 AUSTRALIA - TASMANIA - Port Dalrymple - Bell Bay - Harbour works
Marine and Safety Tasmania Notice M207/2021

Remediation works are in progress at Bell Bay Berth 6 (41° 08'.39 S 146° 51'.14 E).

Mariners are advised to navigate with caution in the area.

Chart temporarily affected - Aus 167

916(T)/2022 AUSTRALIA - TASMANIA - Devonport - Virtual AIS
Marine and Safety Tasmania Notice M373(T)/2022

A reduced width of the channel is marked by virtual AIS as follows:

<i>Position</i>	<i>Remarks</i>
41° 10'.43 S 146° 21'.85 E	starboard lateral AIS
41° 10'.45 S 146° 21'.93 E	port lateral AIS
41° 10'.45 S 146° 21'.84 E	starboard lateral AIS
41° 10'.50 S 146° 21'.82 E	starboard lateral AIS
41° 10'.51 S 146° 21'.91 E	port lateral AIS
41° 10'.57 S 146° 21'.89 E	port lateral AIS.

Chart temporarily affected - Aus 164

83(T)/2023 AUSTRALIA - TASMANIA - Devonport - Harbour works
Marine and Safety Tasmania Notice M10(T)/2023

Demolition works are in progress in the vicinity of berth 3E in an area bounded by the coast and the following positions:

41° 11'.30 S 146° 22'.14 E
41° 11'.32 S 146° 22'.09 E
41° 11'.15 S 146° 21'.97 E
41° 11'.11 S 146° 21'.97 E
41° 11'.07 S 146° 21'.99 E
41° 10'.94 S 146° 21'.98 E
41° 10'.94 S 146° 22'.00 E.

Vessels will display appropriate lights and shapes and will monitor VHF Ch 14.

Mariners are advised not to enter the works area unless they are required to utilise the swing basin. These vessels must obtain approval from Devonport VTS prior to arrival and departure.

Chart temporarily affected - Aus 164

167(T)/2023 AUSTRALIA - TASMANIA - King Island - Grassy Harbour - Platform, submarine cable, prohibited area
Marine and Safety Tasmania Notice M19/2021

A lit platform, *F*, exists in position 40° 03'.97 S 144° 03'.53 E.

A submarine power cable exists between positions 40° 03'.97 S 144° 03'.53 E and 40° 03'.91 S 144° 03'.53 E.

An entry prohibited area, with radius 125m, exists centred on position 40° 03'.97 S 144° 03'.53 E.

Mariners are advised to navigate with caution in the area.

Chart temporarily affected - Aus 179

375(T)/2023 AUSTRALIA - TASMANIA - Devonport - Mersey River - Berth
Marine and Safety Tasmania Notice M175/2023

Three piles exist in the vicinity of position 41° 11'.44 S 146° 22'.01 E for the temporary berth, Devonport Berth 6 West.

Chart temporarily affected - Aus 164

639(T)/2023 AUSTRALIA - TASMANIA - River Derwent - Flowerpot Point - Kelp longlines; light buoys
Former Notice - 513(T)/2023 is cancelled
Marine and Safety Tasmania Notice M214(T)/2023, M266(T)/2023

Subsurface kelp longlines exist in an area, marked by light buoys, bounded by the following positions:

43° 01'.24 S 147° 20'.24 E
43° 01'.24 S 147° 20'.31 E
43° 01'.04 S 147° 20'.31 E
43° 01'.04 S 147° 20'.24 E.

Vessels not directly involved in the research activities are prohibited from entering the area.

Mariners are advised to navigate with caution in the area.

Chart temporarily affected - Aus 171 - Aus 173

839(T)/2023 AUSTRALIA - TASMANIA - Ringarooma Bay - Scientific instrument
Marine and Safety Tasmania Notice M327(T)/2023

A scientific instrument marked by an orange buoy exists in position 40° 49'.55 S 147° 54'.70 E.

Chart temporarily affected - Aus 798

876(T)/2023 AUSTRALIA - TASMANIA - Macquarie Harbour - Scientific instruments

Marine and Safety Tasmania Notice M338(T)/2023

Scientific instruments, 10m below the surface, exist in positions 42° 18'.49 S 145° 23'.01 E and 42° 20'.80 S 145° 25'.22 E.

Chart temporarily affected - Aus 177 - Aus 792

85(T)/2024 AUSTRALIA - TASMANIA - Macquarie Harbour - Lit barge

Marine and Safety Tasmania Notice M10/2024

The barge *Wombat* which is marked by a light, *F*, exists in position 42° 17'.55 S 145° 22'.18 E.

Mariners are advised to navigate with caution in the area.

Chart temporarily affected - Aus 177

133(T)/2024 AUSTRALIA - TASMANIA - Macquarie Harbour - Scientific instrument

Marine and Safety Tasmania Notice M36/2024

A scientific instrument, 10m below the surface, exists in position 42° 22'.79 S 145° 28'.84 E.

Chart temporarily affected - Aus 177 - Aus 792

134(T)/2024 AUSTRALIA - TASMANIA - Macquarie Harbour - Scientific instruments

Marine and Safety Tasmania Notice M37/2024

Scientific instruments marked by special buoys exist in the following positions:

42° 16'.92 S 145° 17'.62 E

42° 17'.06 S 145° 19'.03 E

42° 17'.16 S 145° 16'.00 E

42° 19'.38 S 145° 19'.27 E

42° 21'.72 S 145° 32'.22 E

42° 22'.08 S 145° 24'.46 E

42° 24'.24 S 145° 27'.62 E

42° 26'.04 S 145° 26'.91 E.

Chart temporarily affected - Aus 177 - Aus 792

308(T)/2024 AUSTRALIA - TASMANIA - Bruny Island - Labillardiere Peninsula - Point Labillardiere - Scientific instrument

Marine and Safety Tasmania Notice M143(T)/2024

A special light buoy, *Fl.Y.1.5s*, exists in position 43° 26'.45 S 147° 04'.68 E.

Chart temporarily affected - Aus 173 - Aus 795

343(T)/2024 AUSTRALIA - TASMANIA - Franklin Sound - Lady Barron - Wreck

Marine and Safety Tasmania Notice M159(T)/2024

A wreck marked by an isolated danger light buoy, *Q(2)5s*, exists in position 40° 12'.85 S 148° 14'.74 E.

Chart temporarily affected - Aus 179

344(T)/2024 AUSTRALIA - TASMANIA - Macquarie Harbour - Scientific instrument

Marine and Safety Tasmania Notice M155(T)/2024

A scientific instrument, 10m below the surface, exists in position 42° 18'.56 S 145° 23'.32 E.

Chart temporarily affected - Aus 177 - Aus 792

384(T)/2024 AUSTRALIA - TASMANIA - Burnie - Scientific instrument northwards

Marine and Safety Tasmania Notice M180(T)/2024

A pink buoy exists in position 40° 56'.51 S 145° 56'.06 E.

Chart temporarily affected - Aus 163

426(T)/2024 AUSTRALIA - TASMANIA - Huon River - Brooks Bay - Wreck
Former Notice - 385(T)/2024 is cancelled
Marine and Safety Tasmania Notice M189(T)/2024

A stranded wreck exists in position 43° 13'.74 S 147° 01'.53 E.

Mariners are advised to navigate with caution in the area.

Chart temporarily affected - Aus 173

687(T)/2024 AUSTRALIA - TASMANIA - River Derwent - Blackamns Bay to Halfmoon Bay - Pipe laying operations
Marine and Safety Tasmania Notice M299(T)/2024

Vessel *Wandana* is conducting pipe laying operations in an area bounded by the following positions:

43° 01'.66 S 147° 24'.96 E
43° 01'.06 S 147° 24'.98 E
43° 00'.07 S 147° 19'.50 E
43° 00'.54 S 147° 19'.41 E.

A 500m clearance is requested around the vessel.

Mariners are advised to navigate with caution in the area.

Chart temporarily affected - Aus 171 - Aus 173

767(T)/2024 AUSTRALIA - TASMANIA - Furneaux Group - Flinders Island - Survey operations
Ocean Infinity Pty Ltd

On or about 1 October 2024, vessels *Seven Oceans* and *Nostramo* will be conducting survey operations in an area bounded by the following positions:

40° 15'.38 S 147° 22'.19 E
40° 05'.86 S 147° 43'.03 E
40° 00'.02 S 147° 51'.14 E
39° 51'.96 S 147° 48'.33 E
39° 44'.45 S 147° 53'.94 E
39° 36'.91 S 147° 44'.19 E
39° 55'.91 S 147° 23'.60 E.

Subsurface scientific instruments exist on the seabed in the following positions:

39° 44'.8 S 147° 52'.7 E
39° 54'.0 S 147° 45'.9 E
40° 04'.0 S 147° 44'.3 E
40° 10'.2 S 147° 34'.4 E
40° 15'.9 S 147° 21'.9 E
40° 06'.3 S 147° 22'.2 E
39° 55'.7 S 147° 23'.0 E
39° 45'.8 S 147° 34'.7 E
39° 36'.4 S 147° 44'.2 E
40° 00'.4 S 147° 35'.1 E.

Special light buoys may exist in the vicinity of the above positions.

Mariners are advised to navigate with caution in the area.

Chart temporarily affected - Aus 487 - Aus 800

794(T)/2024 AUSTRALIA - TASMANIA - Norfolk Bay - Little Norfolk Bay - Wreck
Marine and Safety Tasmania Notice M336(T)/2024

A wreck marked by a blue and yellow spar buoy exists in position 43° 02'.88 S 147° 51'.51 E.

Chart temporarily affected - Aus 171

69(T)/2025 AUSTRALIA - TASMANIA - Macquarie Harbour - Table Head - Scientific instrument
Marine and Safety Tasmania Notice M430(T)/2024

A scientific instrument marked by a special buoy exists in position 42° 16'.86 S 145° 16'.84 E.

Mariners are advised to navigate with caution in the area.

Chart temporarily affected - Aus 177

70(T)/2025 AUSTRALIA - TASMANIA - Maria Island - Light buoy off station northeastwards
Former Notice - 1034(T)/2023 is cancelled
Marine and Safety Tasmania Notice M445(T)/2024

The special light buoy, *Fl(5)Y.20s* (42° 31'.8 S 148° 21'.0 E), is off station.

Chart temporarily affected - Aus 766 - Aus 797

71(T)/2025 AUSTRALIA - TASMANIA - Moorland Point to Claytons Bay - Scientific instruments northwards
Marine and Safety Tasmania Notice M405(T)/2024

Special light buoys, *Fl. Y.*, exist in the following positions:

41° 09'.11 S 146° 13'.67 E
41° 03'.95 S 146° 20'.34 E
41° 06'.54 S 146° 26'.29 E
41° 09'.69 S 146° 23'.66 E
41° 09'.83 S 146° 22'.64 E.

Mariners are advised not to moor to the light buoys and to navigate with caution in the area.

Chart temporarily affected - Aus 164

111(T)/2025 AUSTRALIA - TASMANIA - Mercury Passage - Buoy
Former Notice - 1017(T)/2024 is cancelled
Marine and Safety Tasmania Notice M443(T)/2024

A special pink buoy, exists in position 42° 31'.83 S 148° 01'.69 E.

Chart temporarily affected - Aus 766 - Aus 797

113(T)/2025 AUSTRALIA - TASMANIA - River Derwent - Limekiln Point - Light beacon destroyed
Former Notice - 74(T)/2025 is cancelled
Marine and Safety Tasmania Notice M028(T)/2025

The starboard lateral light beacon, *Fl. G. 2s* (42° 50'.80 S 147° 20'.22 E), has been destroyed, a starboard lateral light buoy, *Fl. G. 2s*, exist in situ.

Mariners are advised to navigate with caution in the area.

Chart temporarily affected - Aus 171 - Aus 796

PAPUA NEW GUINEA and SOUTH PACIFIC

789(T)/2018 PAPUA NEW GUINEA - Bismarck Sea - Fish aggregating devices

National Maritime Safety Authority PNG Warning 9/2018

17 fish aggregating devices exist in an area bounded by the following positions:

4° 30'.0 S 149° 55'.0 E

4° 40'.0 S 149° 55'.0 E

4° 40'.0 S 150° 45'.0 E

4° 30'.0 S 150° 45'.0 E.

Mariners are advised to navigate with caution.

Chart temporarily affected - Aus 4622 (INT 622)

286(P)/2019 PAPUA NEW GUINEA - Madang Harbour - Shoaling

LADS Flight

Latest survey shows shoaler depths than those charted may exist in an area bounded by the following positions:

05° 04'.51 S 145° 48'.06 E

05° 11'.75 S 145° 47'.82 E

05° 11'.91 S 145° 49'.61 E

05° 10'.14 S 145° 50'.36 E

05° 04'.14 S 145° 48'.99 E.

Mariners are advised to navigate with caution in the area.

Charts will be updated in due course.

Chart which will be affected - PNG 646

346(T)/2019 PAPUA NEW GUINEA - Huon Gulf - Light buoy off station

National Maritime Safety Authority PNG Notice 9(T)/2017

The isolated danger light buoy, Q(2)5s (6° 48'.38 S 146° 58'.28 E), is off station.

Chart temporarily affected - PNG 643

1110(T)/2019 PAPUA NEW GUINEA - Oreore Channel - Light buoy off station

National Maritime Safety Authority PNG Coastal Navigation Warning 39/2019

The port lateral light buoy, Q.R (10° 13'.68 S 150° 52'.78 E), is off station.

Chart temporarily affected - PNG 628

1331(T)/2019 PAPUA NEW GUINEA - Isulailai Point - Light beacon unlit

National Maritime Safety Authority PNG Warning 43/2019

The light beacon, Fl(2)5s 17m 9M (10° 33'.63 S 150° 41'.71 E), is unlit.

Chart temporarily affected - Aus 625 - PNG 508

668(T)/2020 PAPUA NEW GUINEA - Dauan Island - Light altered

HMAS *Mermaid*

The light, Fl.R.6s (9° 25'.38 S 142° 32'.07 E), has been temporarily altered to F.R.

Chart temporarily affected - Aus 841

771(T)/2020 PAPUA NEW GUINEA - Boera Head - Light unlit

National Maritime Safety Authority PNG Warning 6/2019

The light, Fl.2-5s 33m 10M (9° 23'.39 S 147° 00'.85 E), is unlit.

Chart temporarily affected - PNG 379 - PNG 647

826(P)/2020 PAPUA NEW GUINEA - Batumata Point - Shoaling
LADS Flight

Latest survey shows shoaler depths than those charted may exist in and around the islands and reefs in the area between Galovi (Howard) Reef (10° 11'.1 S 148° 08'.7 E) and Eunoro Island (10° 23'.6 S 149° 27.3 E).

Mariners are advised to navigate with caution in the area.

Charts will be updated in due course.

Chart which will be affected - PNG 506 - PNG 507 - PNG 623

963(T)/2020 PAPUA NEW GUINEA - Caution Bay - Light beacon damaged
National Maritime Safety Authority PNG Notice 39/2020

The light beacon, *Fl.Bu.2s 8M RL2* (9° 17'.98 S 146° 58'.19 E), is damaged and unlit.

Chart temporarily affected - PNG 647 - PNG 648

118(T)/2021 PAPUA NEW GUINEA - Madehas Island - Light unlit
National Maritime Safety Authority PNG

The light, *Fl.10s 137m 16M* (5° 27'.63 S 154° 38'.06 E), is unlit.

Chart temporarily affected - Aus 399 - Aus 4604 (INT 604) - Aus 4622 (INT 622) - PNG 397 - PNG 684

481(T)/2021 PAPUA NEW GUINEA - Caution Bay - Light beacon unlit
National Maritime Safety Authority PNG Coastal Navigation Warning 9/2021

The light beacon, *Fl.G.3s 6M* (9° 18'.54 S 146° 57'.25 E), is unlit.

Chart temporarily affected - PNG 647

985(T)/2021 PAPUA NEW GUINEA - Saibai Island - Shoaling
Former Notice - 201(T)/2021 is cancelled
HMAS *Paluma* , HMAS *Mermaid*

Latest survey indicates shoaler depths than those charted exist in an area bounded by the following positions:

9° 20'.66 S 142° 36'.94 E
9° 20'.15 S 142° 39'.81 E
9° 17'.86 S 142° 48'.32 E
9° 21'.86 S 142° 47'.07 E
9° 21'.01 S 142° 40'.60 E
9° 21'.80 S 142° 37'.67 E
9° 22'.75 S 142° 37'.04 E
9° 22'.72 S 142° 35'.37 E
9° 22'.46 S 142° 34'.10 E
9° 21'.74 S 142° 34'.60 E.

Mariners are advised to navigate with caution in the area.

Charts will be updated in due course.

Chart temporarily affected - Aus 840 - Aus 841

1067(T)/2021 PAPUA NEW GUINEA - Tavui Point - Light unlit
National Maritime Safety Authority PNG Coastal Navigation Warning 26/2021

The light, *Fl.8s 47m 18M* (4° 08'.16 S 152° 10'.21 E), is unlit.

Chart temporarily affected - Aus 4604 (INT 604) - Aus 4622 (INT 622) - PNG 545 - PNG 554 - PNG 680

327(T)/2022 PAPUA NEW GUINEA - Bonvouloir Islands - Aulelowa (Hastings) Island - Light unlit
National Maritime Safety Authority PNG Coastal Navigation Warning 8/2022

The light, *Fl(2)6s 8m 10M* (10° 20'.48 S 151° 52'.07 E), is unlit.

Chart temporarily affected - PNG 509 - PNG 512

785(T)/2022 PACIFIC OCEAN - Scientific instruments
UKHO

Grey pillar buoys exist in the following positions:

5° 02'.3 N 164° 49'.9 E

0° 00'.8 N 164° 59'.8 E

1° 59'.9 S 164° 58'.6 E

5° 01'.0 S 165° 10'.0 E

8° 02'.2 S 164° 46'.4 E.

Chart temporarily affected - Aus 4604 (INT 604)

792(T)/2022 PAPUA NEW GUINEA - Ava Point - Light unlit
National Maritime Safety Authority PNG Coastal Navigation Warning 25/2021

The light, *Fl. 12s 188m 10M* (10° 34'.14 S 149° 52'.89 E), is unlit.

Chart temporarily affected - Aus 4604 (INT 604) - PNG 507

794(T)/2022 PAPUA NEW GUINEA - Huon Gulf - Fish aggregating devices
National Maritime Safety Authority PNG Coastal Navigation Warning 8/2018

23 fish aggregating devices exist in an area bounded by the following positions:

7° 00'.0 S 147° 40'.0 E

7° 55'.0 S 147° 40'.0 E

7° 55'.0 S 148° 50'.0 E

7° 00'.0 S 148° 50'.0 E.

Mariners are advised to navigate with caution.

Chart temporarily affected - Aus 4622 (INT 622) - PNG 386 - PNG 521 - PNG 522 - PNG 523

829(T)/2022 PAPUA NEW GUINEA - Dekatuwe (Bright) Island - Light beacon unlit
Former Notice - 500(T)/2022 is cancelled
National Maritime Safety Authority PNG Notice 10/2022, 14/2022

The light beacon, *Fl. 2.5s 16m 10M* (10° 31'.89 S 151° 12'.74 E), is unlit.

Chart temporarily affected - PNG 509

830(T)/2022 PAPUA NEW GUINEA - Kanaweya (Shortland) Reefs to Nuakata Passage - Light beacons unlit
National Maritime Safety Authority PNG Notice 15/2022, 16/2022

The light beacons, *Fl(3)12s 11m 10M* (10° 30'.70 S 151° 08'.13 E) and *Fl(2)10s 7m 6M* (10° 23'.60 S 151° 00'.77 E), are unlit.

Chart temporarily affected - PNG 508 - PNG 509 - PNG 628

831(T)/2022 PAPUA NEW GUINEA - Wadei Island - Light beacon unlit
National Maritime Safety Authority PNG Notice 17/2022

The starboard lateral light beacon, *Fl(2)G.8s 7m 3M* (2° 39'.45 S 150° 37'.68 E), is unlit.

Chart temporarily affected - PNG 543 - PNG 666

278(T)/2023 PAPUA NEW GUINEA - Boli Point - Trobriand Islands - Light unlit
National Maritime Safety Authority PNG

The light, *Fl.G.5s* (08° 33'.77 S 151° 01'.10 E) is unlit.

Chart temporarily affected - PNG 516 - PNG 637

279(T)/2023 PAPUA NEW GUINEA - Bomatu Point - Trobriand Islands - Light unlit
National Maritime Safety Authority PNG

The light, *Fl(3)15s 31m 10M* (08° 24'.09 S 151° 07'.20 E) is unlit.

Chart temporarily affected - PNG 516 - PNG 637

282(T)/2023 PAPUA NEW GUINEA - Galagalohi (Gallows) Reef - Goschen Strait - Light unlit
National Maritime Safety Authority PNG

The light, *Fl.5s 7m 10M* (10° 15'.44 S 151° 10'.39 E), is unlit.

Chart temporarily affected - PNG 509 - PNG 513

283(T)/2023 PAPUA NEW GUINEA - Kitava Island - Trobriand Islands - Light unlit
National Maritime Safety Authority PNG

The light, *Q* (08° 37'.70 S 151° 18'.34 E) is unlit.

Chart temporarily affected - PNG 515 - PNG 516 - PNG 637

285(T)/2023 PAPUA NEW GUINEA - Tamiaris Reef - Laughlan Islands - Light unlit
National Maritime Safety Authority PNG

The light, *Fl(2)8s* (09° 16'.84 S 153° 39'.38 E), is unlit.

Chart temporarily affected - PNG 514

974(T)/2023 PAPUA NEW GUINEA - Buka Passage - Light beacon unlit
National Maritime Safety Authority PNG Coastal Navigation Warning 23/2023

The light beacon, *Fl.2.5s 7m 10M* (5° 24'.39 S 154° 42'.69 E), is unlit.

Chart temporarily affected - Aus 399 - Aus 4622 (INT 622) - PNG 397 - PNG 684

975(T)/2023 PAPUA NEW GUINEA - Rabaul - Light unlit
National Maritime Safety Authority PNG Coastal Navigation Warning 24/2023

The light, *Fl.5s 38m 8M* (4° 11'.71 S 152° 10'.08 E), is unlit.

Chart temporarily affected - PNG 680

288(T)/2024 PAPUA NEW GUINEA - Caution Bay - Light beacon unlit
National Maritime Safety Authority PNG Coastal Navigation Warning 8/2024

The light beacon, *Fl.G.3s 6M G9* (9° 19'.93 S 146° 58'.67 E), is unlit.

Chart temporarily affected - PNG 647 - PNG 648

289(T)/2024 PAPUA NEW GUINEA - Queen Carola Harbour - Light beacon unlit
National Maritime Safety Authority PNG Coastal Navigation Warning 7/2024

The light beacon, *Fl.R.6s* (5° 08'.18 S 154° 32'.92 E), is unlit.

Chart temporarily affected - PNG 684

290(T)/2024 PAPUA NEW GUINEA - Redscar Head - Light unlit
National Maritime Safety Authority PNG Coastal Navigation Warning 5/2024

The light, *Fl.10s 77m 10M* (9° 15'.91 S 146° 54'.03 E), is unlit.

Chart temporarily affected - PNG 379 - PNG 647

367(T)/2024 PAPUA NEW GUINEA - Unei Island - Light unlit
National Maritime Safety Authority PNG Coastal Navigation Warning 12/2024

The light, *Fl(4)16s 9m 10M* (3° 22'.69 S 143° 24'.58 E), is unlit.

Chart temporarily affected - Aus 4622 (INT 622) - PNG 389 - PNG 651

746(P)/2024 PAPUA NEW GUINEA - Rabaul - Coastline
Australian Hydrographic Office

The coastline between Karavia Bay (4° 16'.84 S 152° 09'.83 E) and Nodup (4° 11'.66 S 152° 12'.32 E) may differ to what is currently charted.

Mariners are advised to navigate with caution in the area.

Charts will updated in due course.

Chart which will be affected - PNG 545 - PNG 554 - PNG 680

908(T)/2024 PAPUA NEW GUINEA - Gulf of Papua - Geotechnical survey operations
National Maritime Safety Authority PNG Coastal Navigation Warning 15/2024

MV *Silverstar* is conducting geotechnical survey operations in an area bounded by the following positions:

8° 15'.00 S 144° 36'.00 E
8° 15'.00 S 145° 30'.00 E
7° 51'.00 S 145° 30'.00 E
7° 51'.00 S 144° 36'.00 E.

A 1M exclusion zone is requested.

The vessel will monitor VHF Ch 16.

Mariners are advised to navigate with caution in the area.

Chart temporarily affected - PNG 378 - PNG 502

EAST TIMOR

NIL

MISCELLANEOUS

677(P)/2017 SOLOMON ISLANDS - Honiara and Lungga Roads - Shoaling UKHO

Latest survey shows shoaler depths than those charted may exist in the approaches to Honiara and within Lungga Roads (9° 25'.0 S 159° 58'.8 E).

Charts will updated in due course.

Chart which will be affected - SLB 101

678(T)/2017 SOLOMON ISLANDS - Lungga Point - Light beacon unlit Australian Hydrographic Service

The light beacon, *Fl(3)20s 10m 5M* (9° 24'.26 S 160° 01'.66 E), is unlit.

Chart temporarily affected - SLB 101 - SLB 201

91(P)/2018 SOLOMON ISLANDS - Ghizo Island - Shoaling Secretariat of the Pacific Community

Latest survey shows shoaler depths than those charted may exist in and around the islands and reefs in the area between Naru Island (8° 08'.3 S 156° 55'.1 E) and Sepo Island (8° 03'.2 S 156° 49.5 E).

Mariners are advised to navigate with caution in the area.

Charts will be updated in due course.

Chart which will be affected - SLB 102 - SLB 301 - SLB 302

987(T)/2018 TIMOR-LESTE - Dili - Light unlit HMAS *Paluma*

The light, *Fl.R.4s* (8° 33'.20 S 125° 34'.70 E), is unlit.

Chart temporarily affected - Aus 901

406(P)/2020 SOLOMON ISLANDS - Port Noro to Kuri Point - Shoaling *Former Notice - 184(P)/2020 is cancelled* Australian Hydrographic Office , HMAS *Leeuwin*

Latest survey shows shoaler depths than those charted may exist in areas bounded by the following positions:

8° 15'.07 S 157° 11'.77 E

8° 15'.43 S 157° 11'.52 E

8° 15'.78 S 157° 11'.47 E

8° 15'.78 S 157° 12'.00 E

8° 15'.07 S 157° 11'.89 E;

and

8° 19'.68 S 157° 11'.83 E

8° 21'.27 S 157° 12'.62 E

8° 21'.09 S 157° 13'.14 E

8° 19'.05 S 157° 12'.30 E

8° 19'.17 S 157° 11'.76 E.

Mariners are advised to navigate with caution in the area.

Charts will be updated in due course.

Chart which will be affected - SLB 102

80(P)/2022 SOUTHERN OCEAN - Antarctica - Mawson - Shoaling Australian Antarctic Division

Latest survey indicates shoaling in the approach to Mawson in the following locations

67° 25'.00 S 062° 46'.20 E
67° 29'.58 S 062° 52'.92 E
67° 30'.08 S 062° 50'.45 E
67° 30'.70 S 062° 53'.35 E
67° 30'.45 S 062° 51'.56 E
67° 35'.00 S 062° 52'.25 E

Mariners are advised to navigate with caution in the area.

Charts will be updated in due course.

Chart which will be affected - Aus 600 (INT 9036)

515(T)/2023 SOLOMON ISLANDS - Nusatupe Island - Topmarks destroyed

Former Notice - 847(T)/2018 is cancelled

Solomon Islands Maritime Authority Notice 7/2023

The topmark on light beacons, *Fl(3)R.10s 10m 5M* (8° 05'.55 S 156° 51'.81 E) and *Fl(2)G.10s 8m 3M* (8° 05'.81 S 156° 51'.66 E), have been destroyed.

Chart temporarily affected - SLB 102 - SLB 301 - SLB 302

878(T)/2023 SOLOMON ISLANDS - Honiara - Wrecks

Aero Asahi Corporation

Wrecks exist as follows:

<i>Position</i>	<i>Remarks</i>
9° 25'.38 S 159° 55'.62 E	least depth, 5.1m
9° 25'.56 S 159° 57'.18 E	least depth, 1.3m
9° 25'.68 S 159° 57'.28 E	least depth, 10.7m
9° 25'.70 S 159° 57'.38 E	least depth, 6m
9° 25'.71 S 159° 58'.67 E	least depth, 25.5m.

Chart temporarily affected - SLB 101 - SLB 201

987(P)/2023 SOLOMON ISLANDS - Lungga Roads - Shoaling

Aero Asahi Corporation

Latest survey indicates shoaler depths than those charted may exist in an area bounded by the following positions:

9° 24'.09 S 160° 01'.79 E
9° 24'.09 S 160° 01'.66 E
9° 24'.32 S 160° 01'.11 E
9° 25'.27 S 160° 00'.28 E
9° 25'.43 S 160° 00'.40 E
9° 24'.58 S 160° 01'.12 E
9° 24'.30 S 160° 01'.60 E
9° 24'.32 S 160° 01'.79 E.

Mariners are advised to navigate with caution in the area.

Charts will be updated in due course.

Chart which will be affected - SLB 101

228(T)/2024 SOUTHERN OCEAN - Macquarie Island - Scientific instrument southwestwards

CSIRO

A subsurface scientific instrument, 90m below the surface, exists in the position 55° 47'.62 S 152° 43'.56 E.

Chart temporarily affected - Aus 4074 (INT 74)

387(T)/2024 SOLOMON ISLANDS - Maru Sound - Nort East Entrance - Light buoys off station

Solomon Islands Maritime Authority

The port lateral light buoy, *Fl.R.3s* (9° 46'.81 S 160° 51'.08 E), and the starboard lateral light buoy, *Fl.G.3s* (9° 46'.54 S 160° 50'.48 E), are off station.

Chart temporarily affected - SLB 101

506(T)/2024 SOLOMON ISLANDS - Lengo Channel - Taivu Point - Light beacon unlit

Solomon Islands Maritime Safety Administration

The light beacon, *LFl(2)20s 10m 5M* (9° 24'.54 S 160° 21'.02 E), is unlit.

Chart temporarily affected - SLB 201 - SLB 304

726(T)/2024 SOLOMON ISLANDS - Florida Islands - Nggela Sule - Tuituhi Point - Light beacon unlit

Solomon Islands Maritime Authority Notice 13(T)/2024

The light beacon, *Fl(3)20s 10m 10M* (9° 08'.57 S 160° 13'.74 E), is unlit.

Chart temporarily affected - SLB 201 - SLB 304

768(P)/2024 SOLOMON ISLANDS - Diamond Narrows to Munda Bar - Shoaling

Aero Asahi Corporation

Latest survey indicates shoaler depths than those charted may exist between Diamond Narrows (8° 15'.62 S 157° 11'.69 E) and Munda Bar (8° 20'.94 S 157° 12'.72 E).

Mariners are advised to navigate with caution in the area.

Charts will be updated in due course.

Chart which will be affected - SLB 102 - SLB 302

938(P)/2024 SOLOMON ISLANDS - Blakett Strait - Shoaling

Aero Asahi Corporation

Latest survey indicates shoaler depths than those charted may exist in Blakett Strait in an area between longitudes 157° 06'.68 E and 157° 09'.94 E.

Drying coral exists in position 8° 07'.94 S 157° 09'.74 E.

Mariners are advised to navigate with caution in the area.

Charts will be updated in due course.

Chart which will be affected - SLB 102

939(T)/2024 SOLOMON ISLANDS - Honiara - Point Cruz - Light buoys off station

Solomon Islands Maritime Authority Notice 3/2024, 10/2024

The special light buoy, *Fl.Y.10s* (9° 25'.45 S 159° 57'.53 E), is off station.

The special light buoy, *Fl.Y.3s* (9° 25'.28 S 159° 57'.23 E), is off station.

Chart temporarily affected - SLB 101

940(T)/2024 SOLOMON ISLANDS - Honiara - Kua Bay - Light buoy unlit

Solomon Islands Maritime Authority Notice 12/2024

The isolated danger light buoy, *Fl(2)10s* (9° 25'.89 S 159° 57'.76 E), is unlit.

Chart temporarily affected - SLB 101