

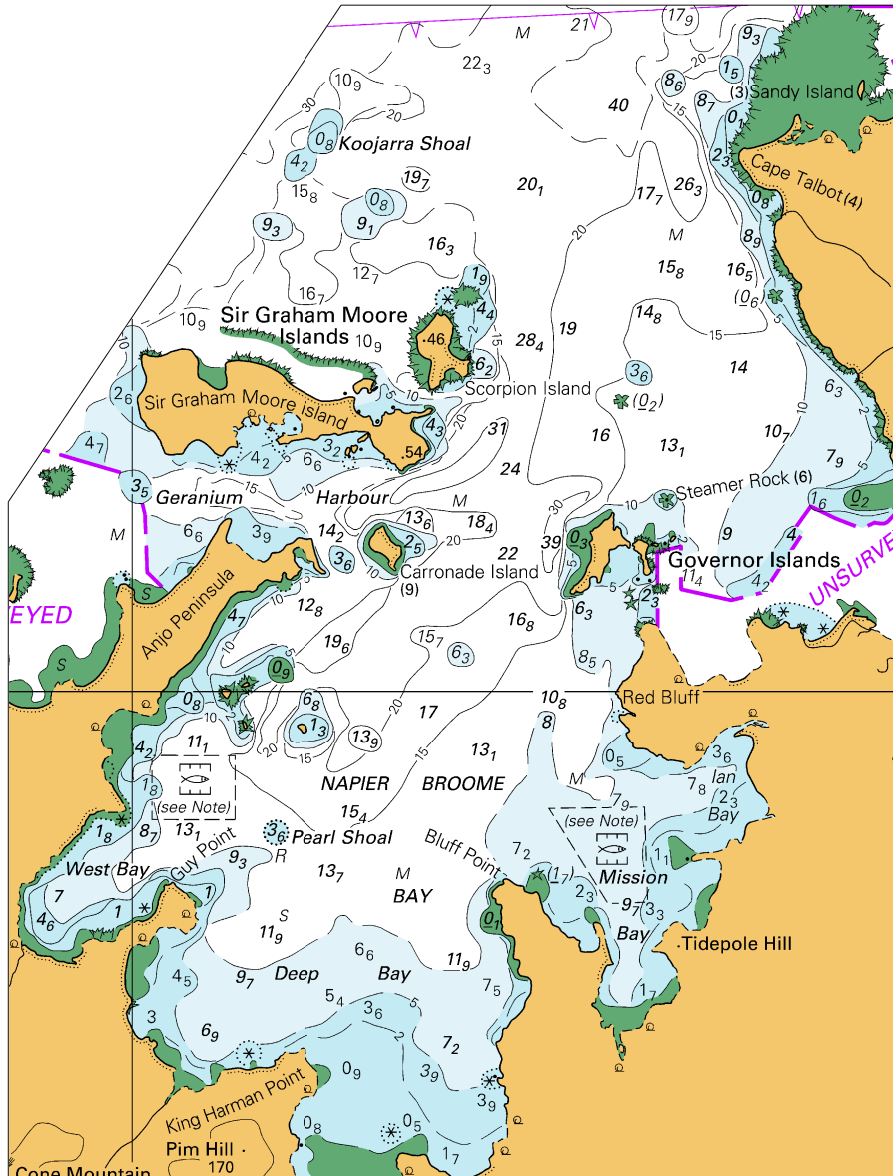
To accompany Australian Notice to Mariners 206/2025

COMPULSORY PILOTAGE

Pilotage is compulsory for all vessels with a LOA of 35 metres or greater.

Note for chart Aus 64

To accompany Australian Notice to Mariners 204/2025

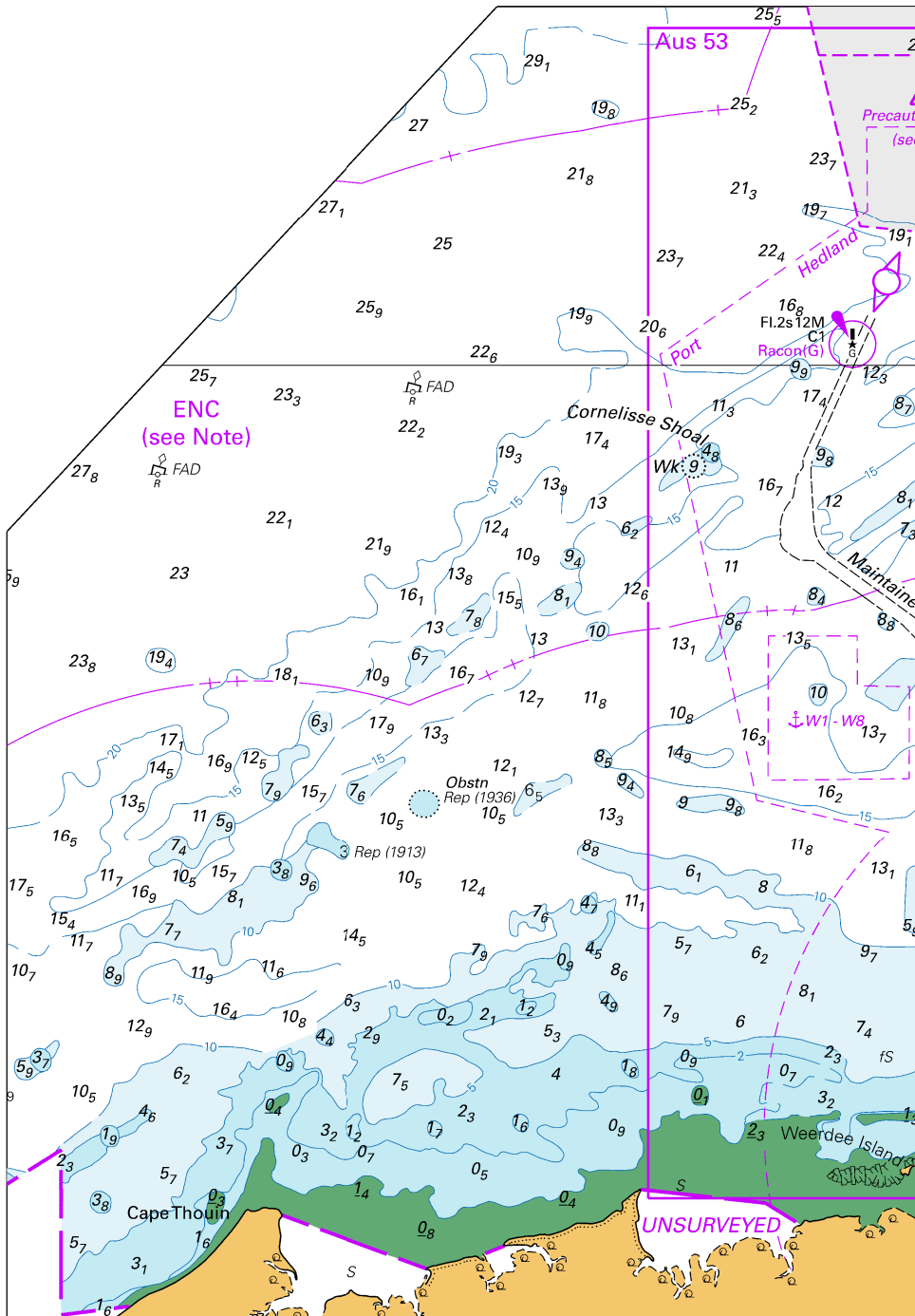


Block for chart Aus 318

© Commonwealth of Australia 2025

(74.0 x 155.0mm)
(117.9

To accompany Australian Notice to Mariners 205/2025



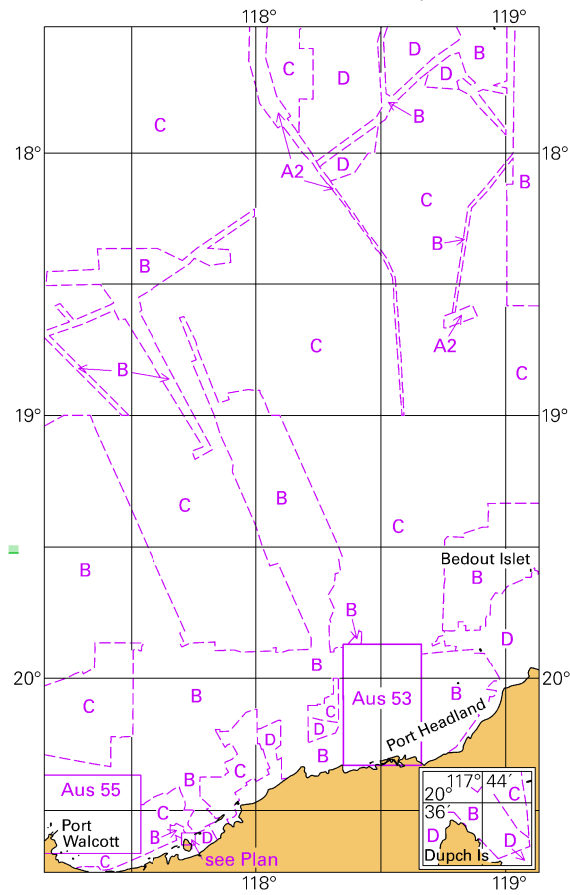
Block A for chart Aus 326

© Commonwealth of Australia 2025

(58.6
126.9 x 182.6mm)

To accompany Australian Notice to Mariners 205/2025

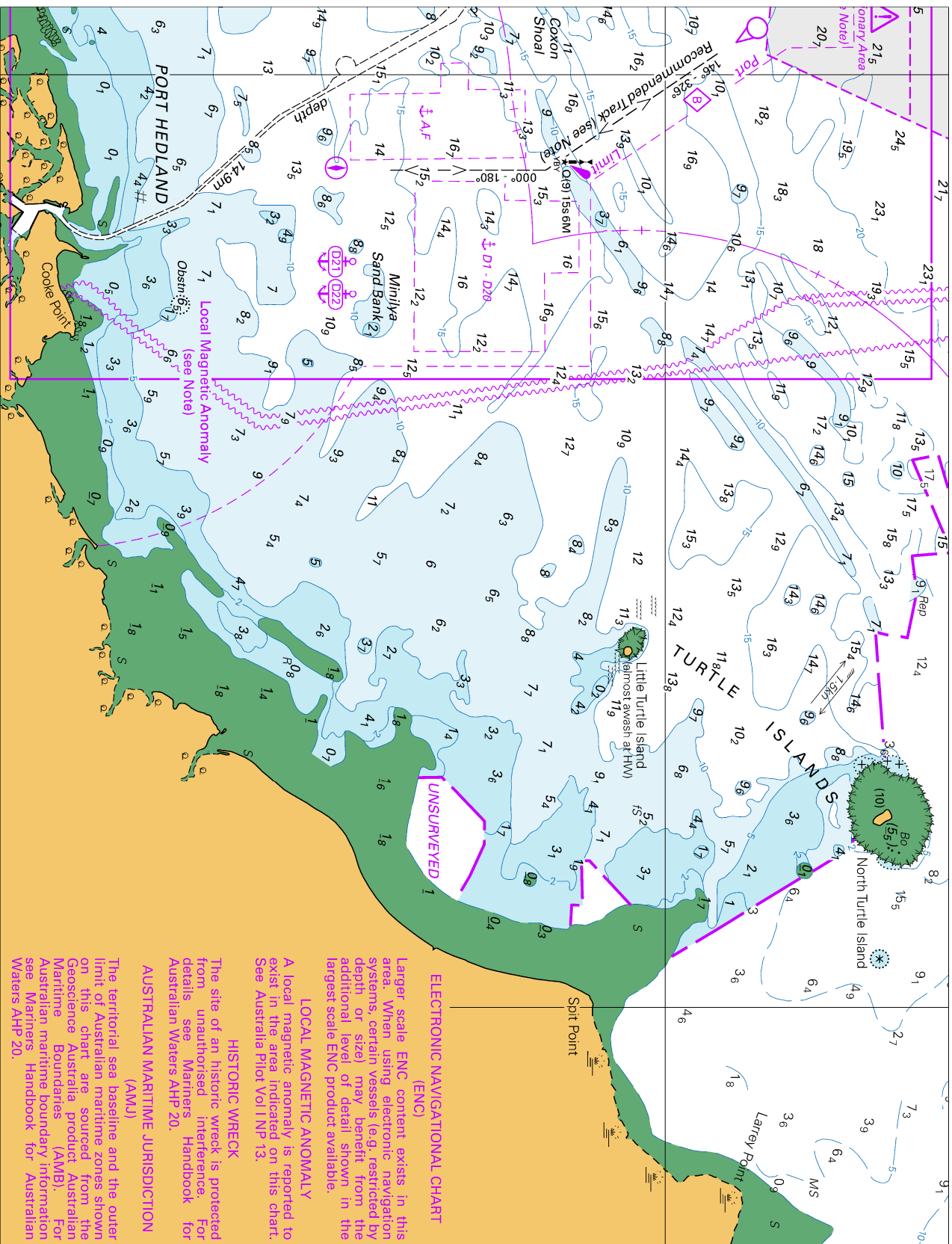
Zone of Confidence (ZOC) Diagram



Block for chart Aus 326

(65.6 x 111.9mm)

© Commonwealth of Australia 2025



Block B for chart Aus 326

ELECTRONIC NAVIGATIONAL CHART (ENC)

Larger scale ENC content exists in this area. When using electronic navigation systems, certain vessels (e.g. restricted by depth or size) may benefit from the additional level of detail shown in the largest scale ENC product available.

LOCAL MAGNETIC ANOMALY

A local magnetic anomaly is reported to exist in the area indicated on this chart. See Australia Pilot Vol I NP 13.

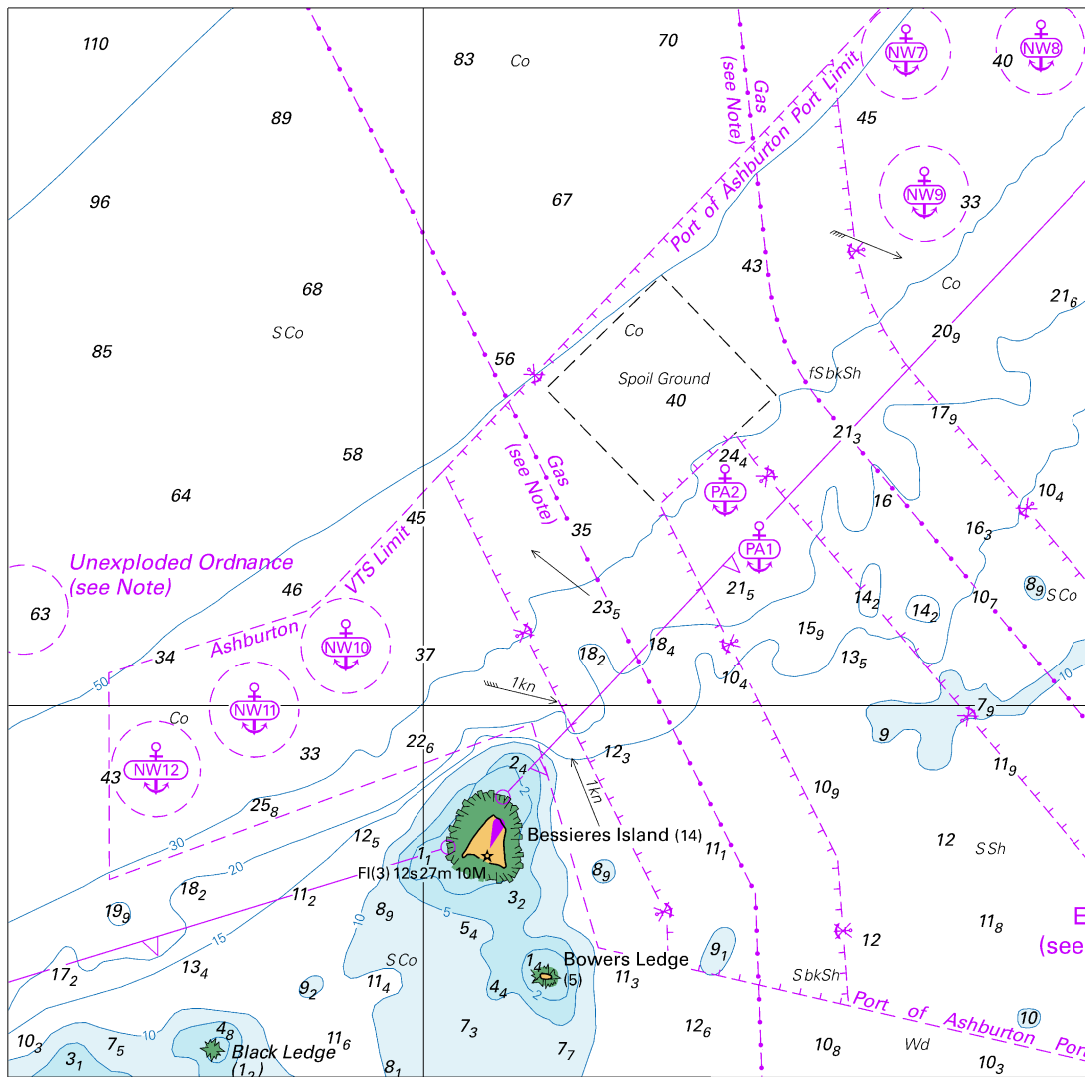
HISTORIC WRECK

The site of an historic wreck is protected from unauthorised interference. For details see Mariners Handbook for Australian Waters AHP 20.

AUSTRALIAN MARITIME JURISDICTION (AMJ)

The territorial sea baseline and the outer limit of Australian maritime zones shown on this chart are sourced from the Geoscience Australia product Australian Maritime Boundaries (AMB). For Australian maritime boundary information see Mariners Handbook for Australian Waters AHP 20.

To accompany Australian Notice to Mariners 206/2025

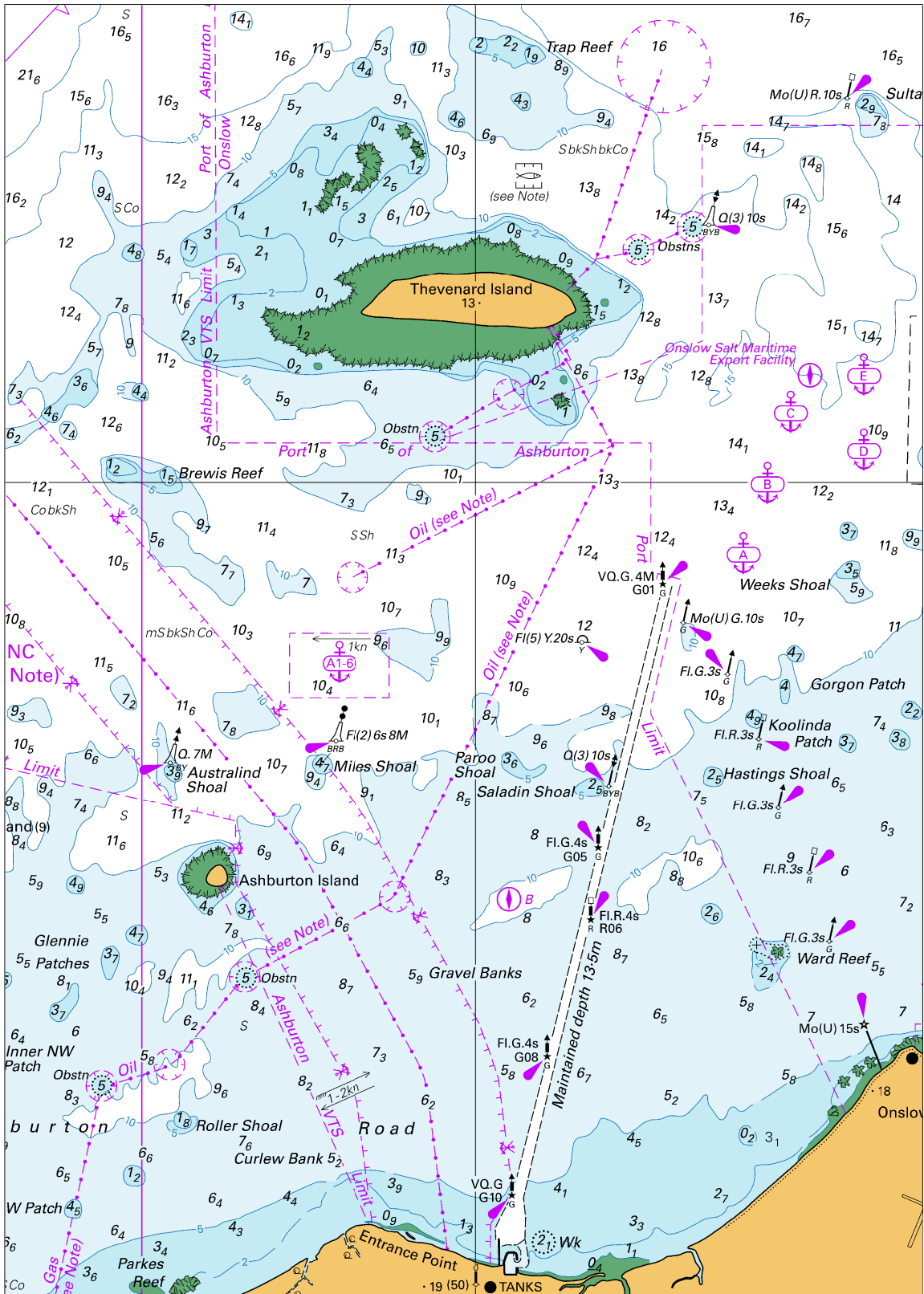


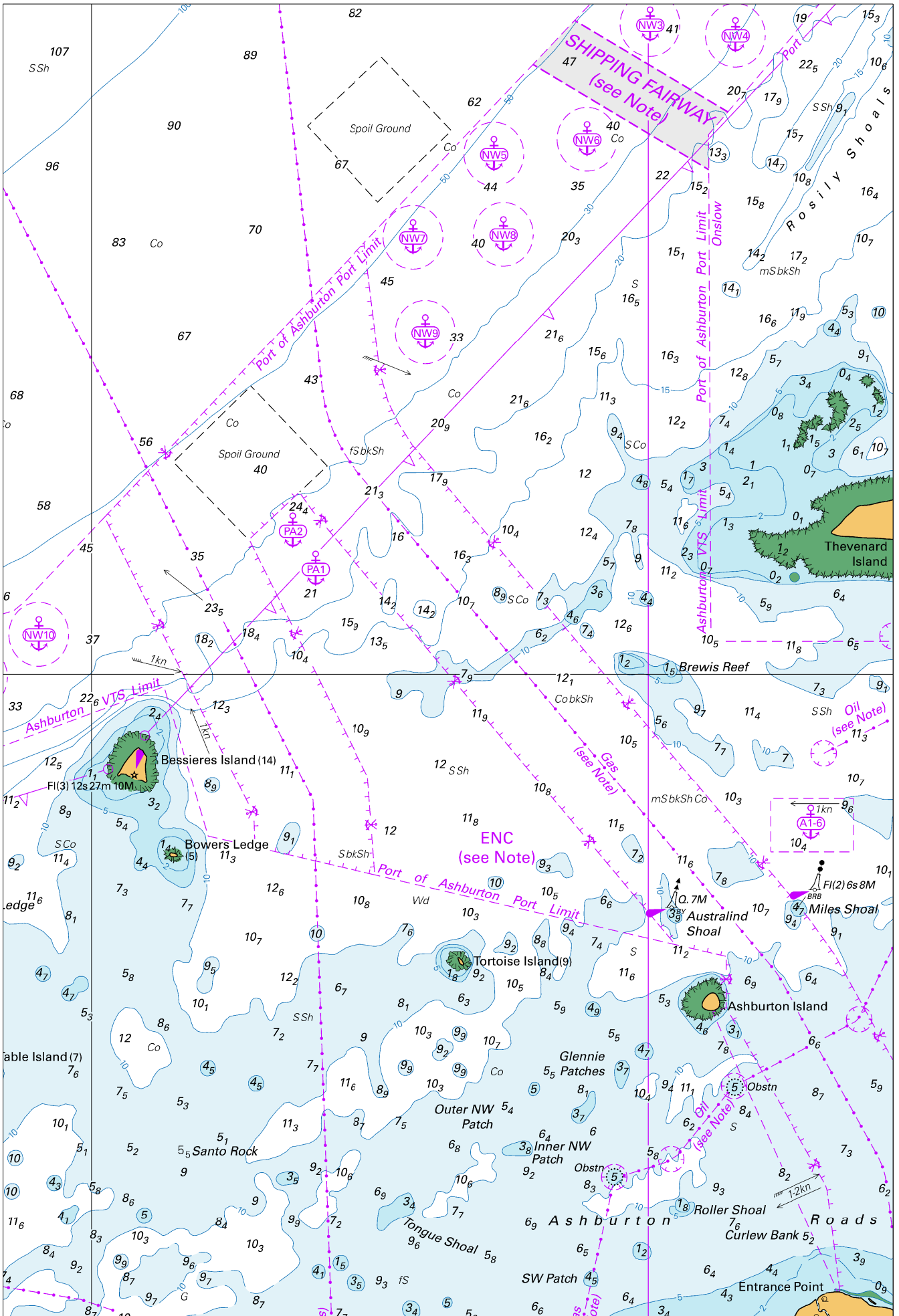
Block A for chart Aus 743

© Commonwealth of Australia 2025

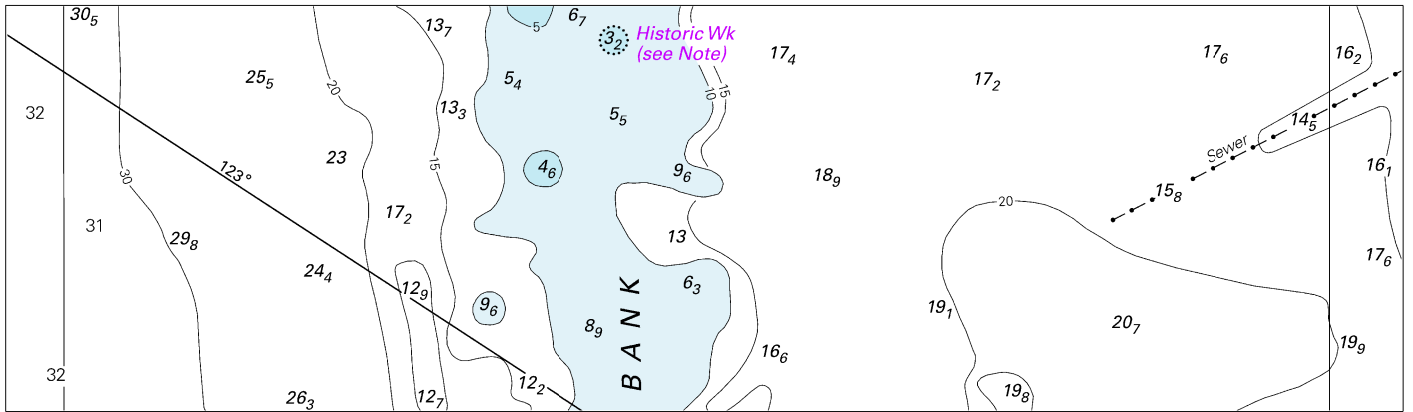
(142.7 x 141.4mm)

To accompany Australian Notice to Mariners 206/2025





To accompany Australian Notice to Mariners 207/2025

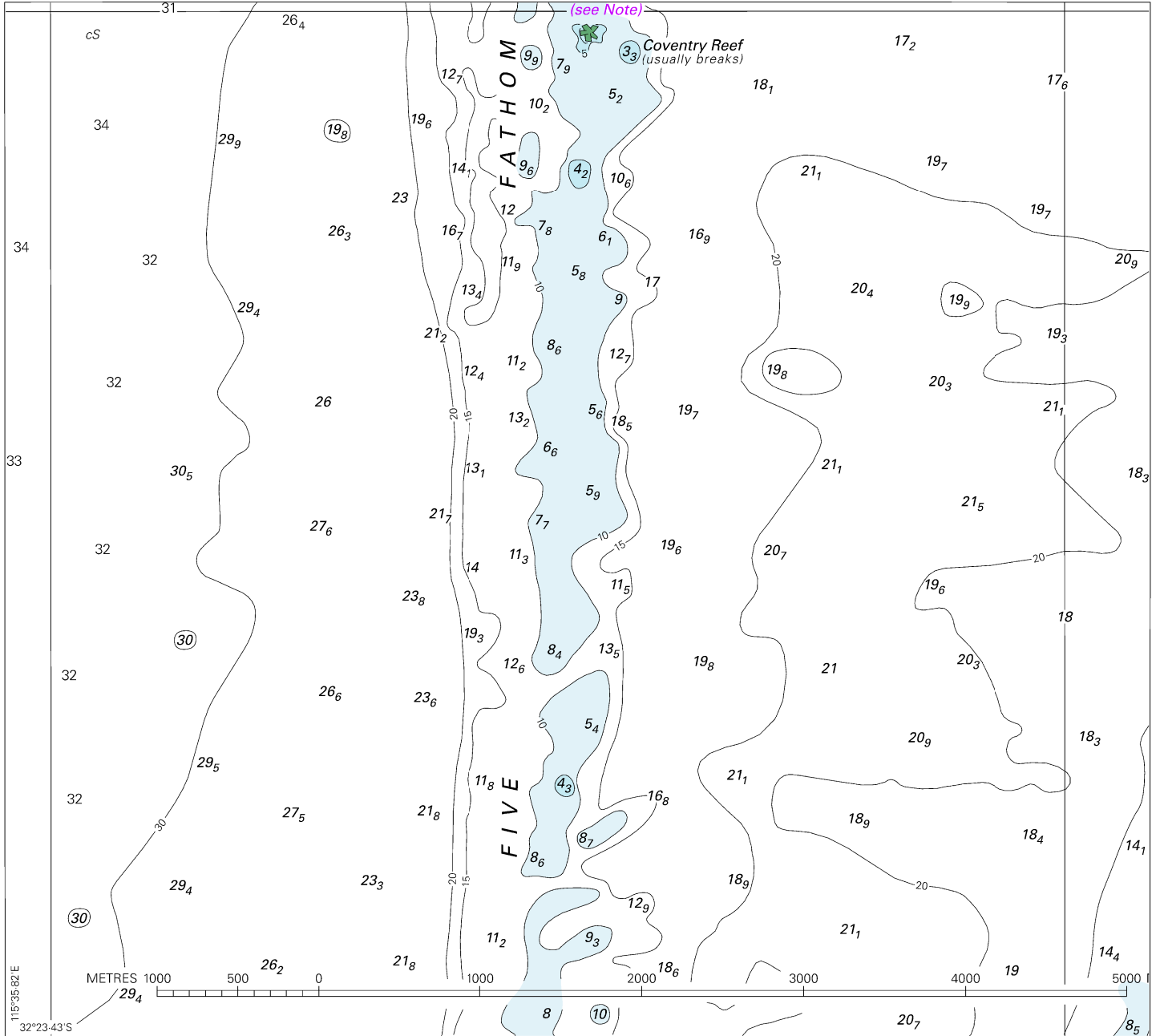


Block A for chart Aus 116

© Commonwealth of Australia 2025

(184.8 x 53.6mm)

To accompany Australian Notice to Mariners 207/2025

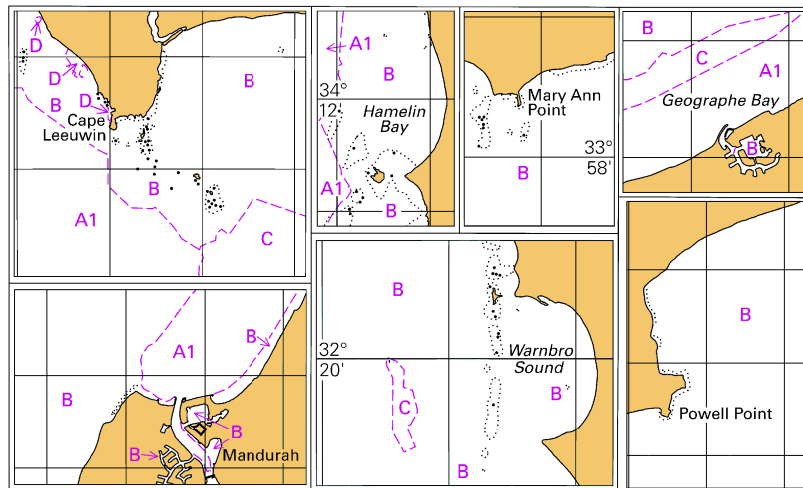


Block B for chart Aus 116

© Commonwealth of Australia 2025

(189.0 x 170.6mm)

To accompany Australian Notice to Mariners 207/2025



Block for chart Aus 116 © Commonwealth of Australia 2025

(107.0 x 64.8mm)

