

To accompany Australian Notice to Mariners 643/2025

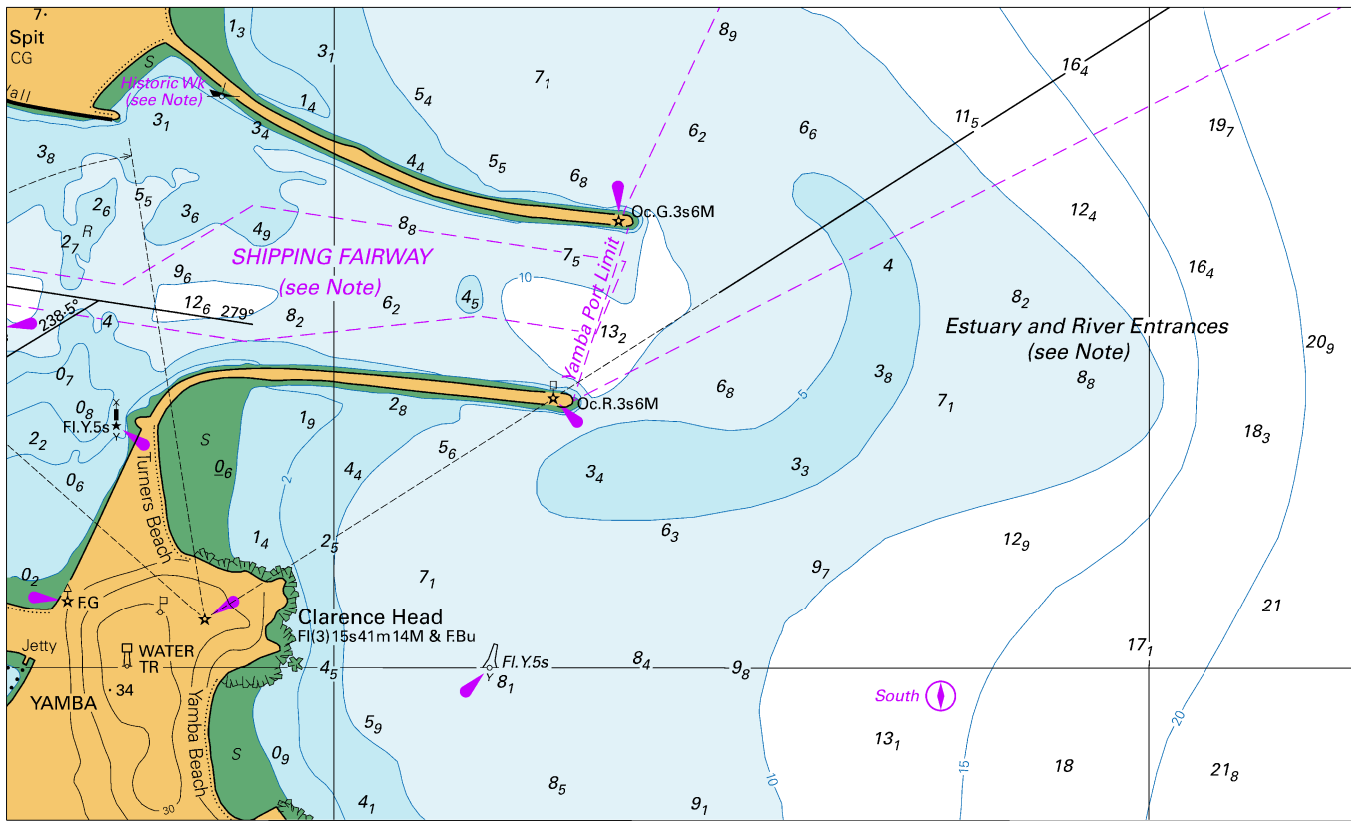
HISTORIC WRECK

The site of an historic wreck is protected from unauthorised interference. For details see Mariners Handbook for Australian

Waters AHP 20.

Note for chart Aus 222

To accompany Australian Notice to Mariners 643/2025

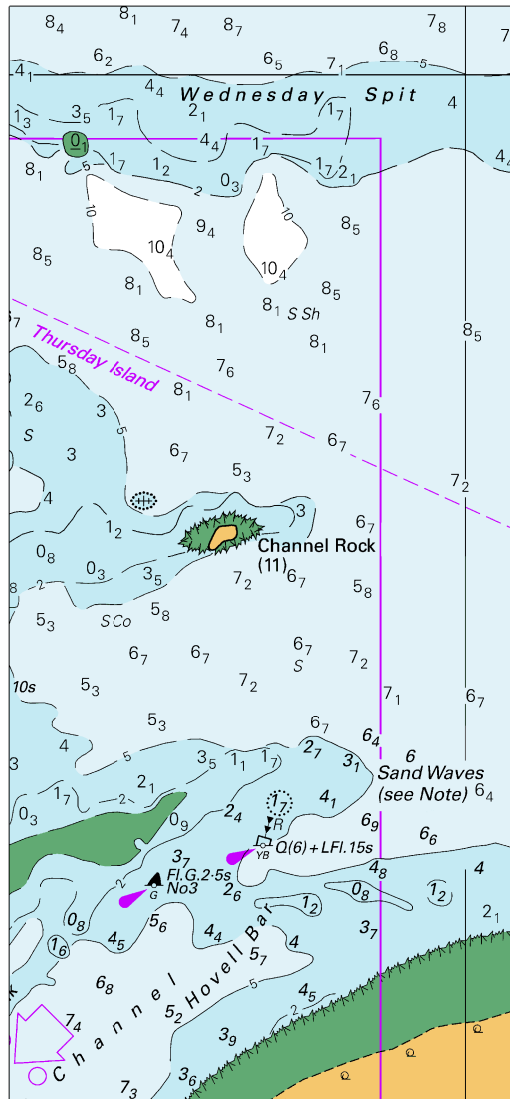


Block for chart Aus 222

© Commonwealth of Australia 2025

(178.0 x 107.6mm)

To accompany Australian Notice to Mariners 648/2025

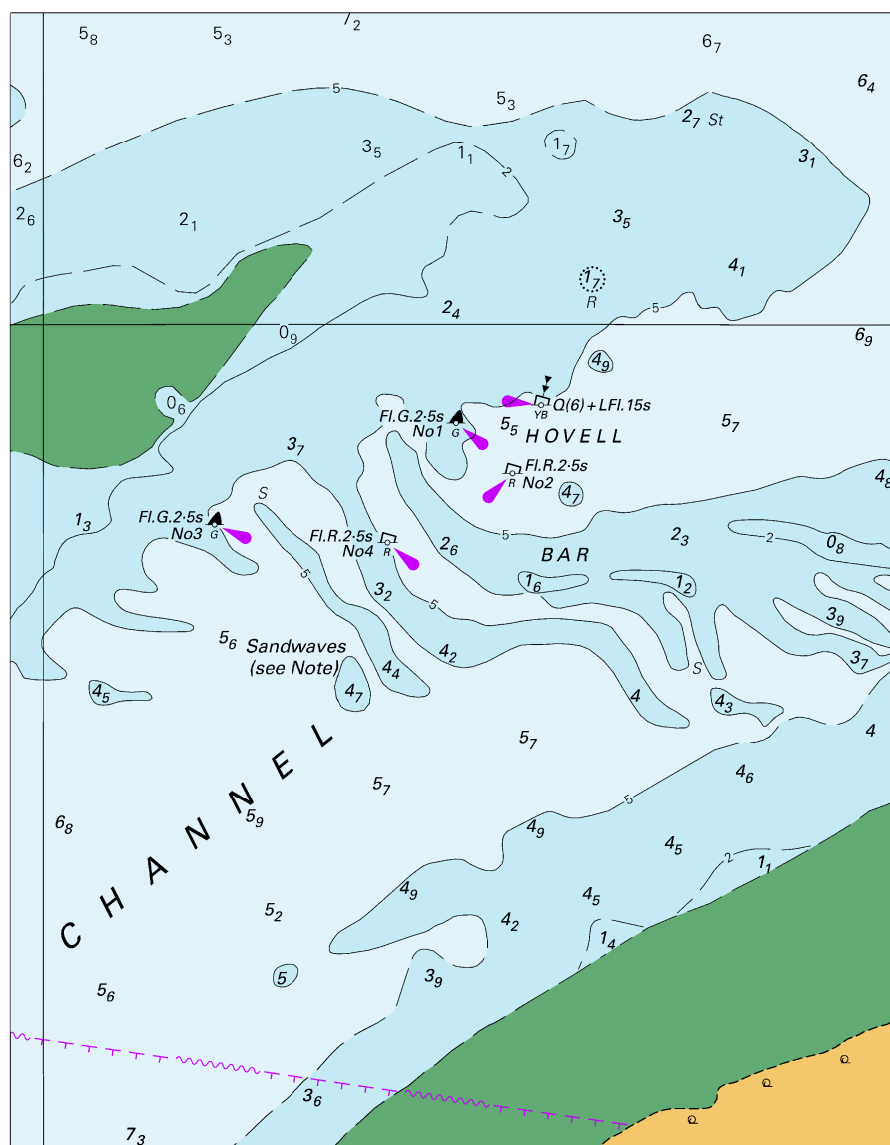


Block for chart Aus 293

(67.2 x 144.7mm)

© Commonwealth of Australia 2025

To accompany Australian Notice to Mariners 648/2025

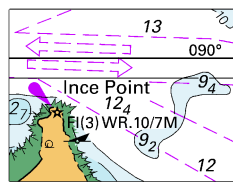


Block for chart Aus 299

© Commonwealth of Australia 2025

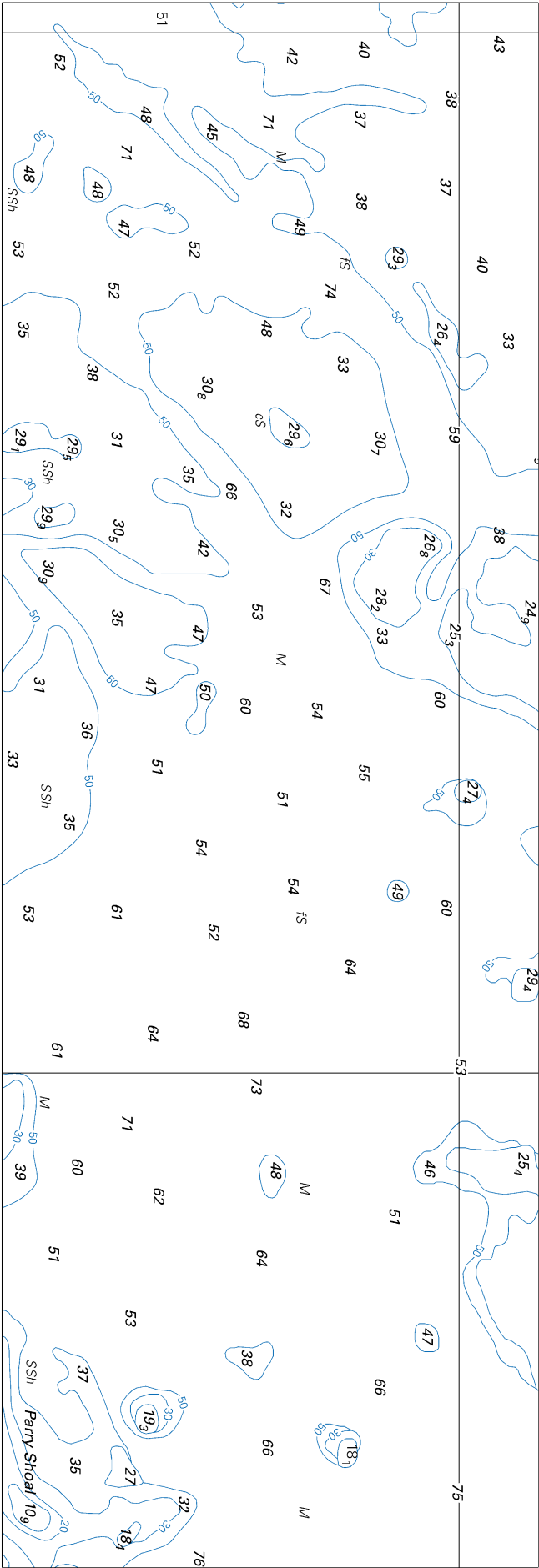
(116.7 x 150.0mm)

To accompany Australian Notice to Mariners 649/2025



Block for Chart Aus 700 (30.2 x 22.7mm)
© Commonwealth of Australia 2025

To accompany Australian Notice to Mariners 650/2025

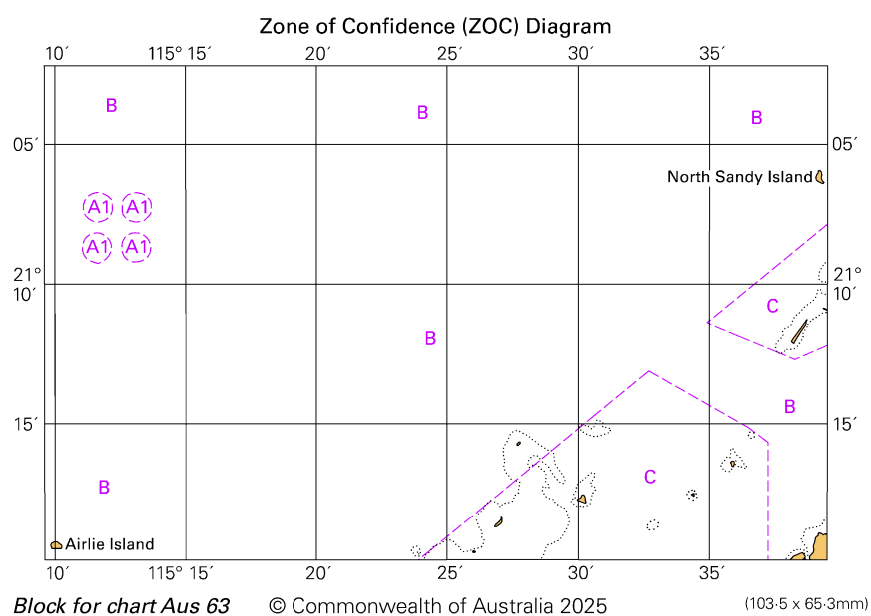


Block for chart Aus 310

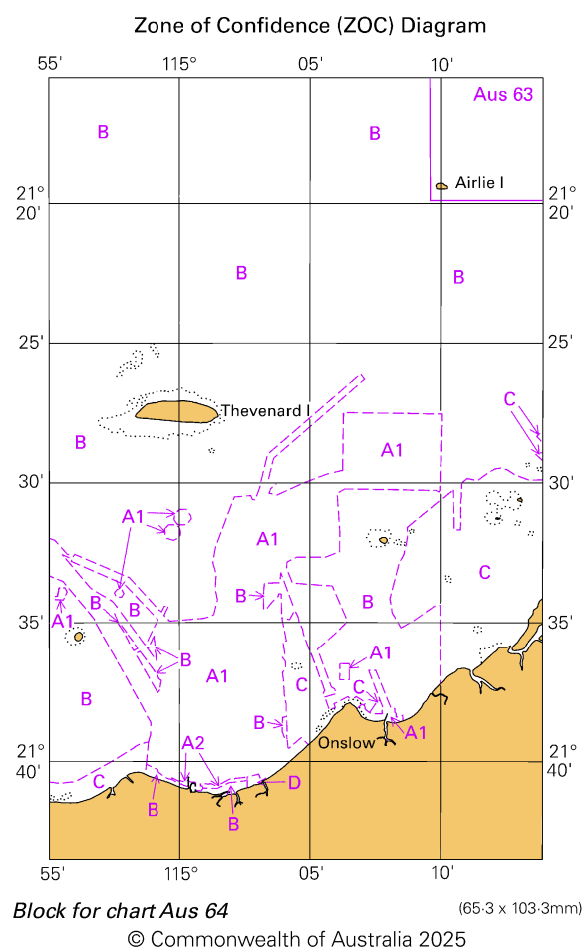
© Commonwealth of Australia 2025

(248.3 x 85.0mm)

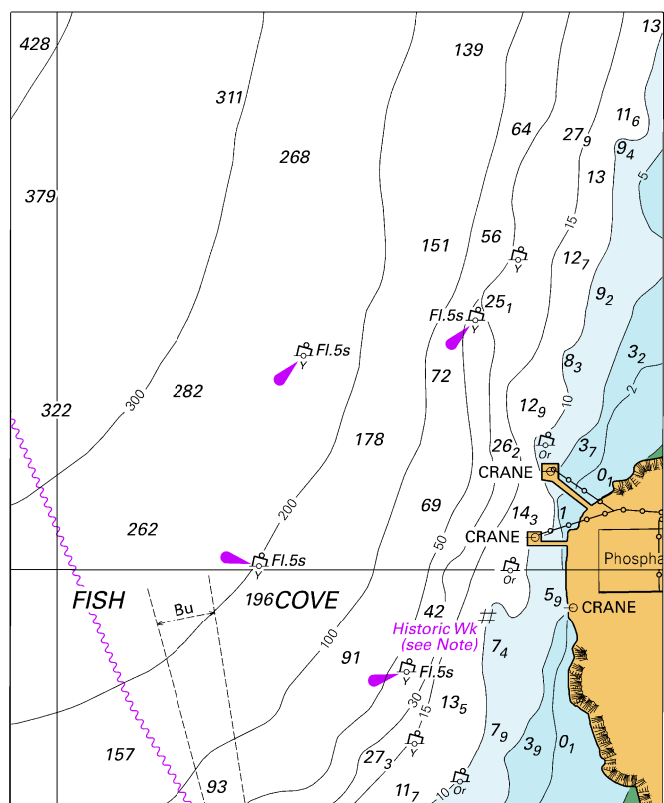
To accompany Australian Notice to Mariners 654/2025



To accompany Australian Notice to Mariners 654/2025



To accompany Australian Notice to Mariners 656/2025

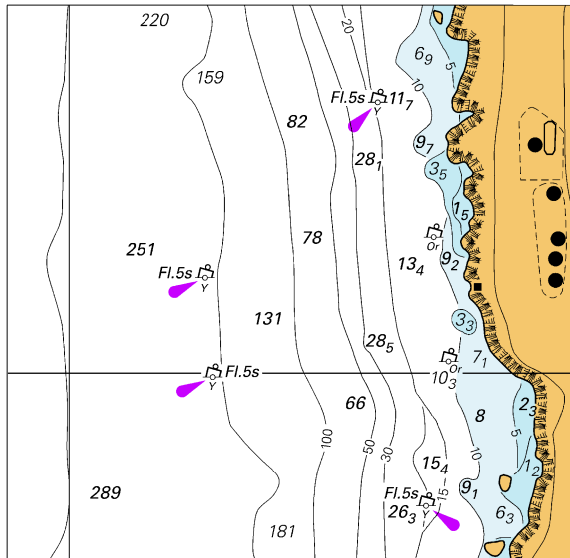


Block A for chart Aus 920

(86.3 x 104.8mm)

© Commonwealth of Australia 2025

To accompany Australian Notice to Mariners 656/2025

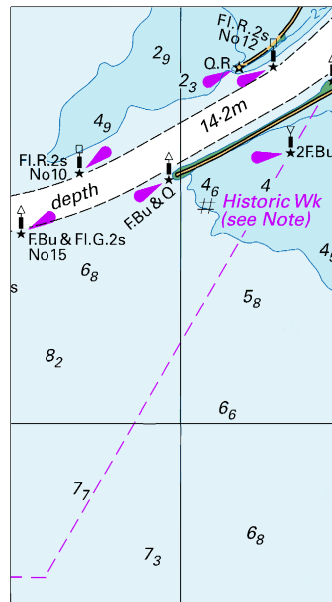


Block B for chart Aus 920

(74.7 x 73.3mm)

© Commonwealth of Australia 2025

To accompany Australian Notice to Mariners 657/2025



Block for chart Aus 130 (43.4 x 79.0mm)
© Commonwealth of Australia 2025