



# AUSTRALIAN NOTICES TO MARINERS

## Notices 311 - 345

Published fortnightly by the Australian Hydrographic Office



Australian Notices to Mariners are the authority for correcting charts and publications published by the Australian Hydrographic Office covering Australia, Papua New Guinea, Solomon Islands, Australian Antarctic Territory and Timor-Leste.

Commodore R.L. PHILLIPS RAN  
*Hydrographer of Australia*

---

### SECTIONS.

- I. **Australian Notices to Mariners, including blocks and notes.**
- II. **Hydrographic Reports.**

### SUPPLEMENTS.

- I. **Tracings**
  - II. **Cumulative List of Australian Notices to Mariners.**
  - III. **Cumulative List of Temporary and Preliminary Australian Notices to Mariners.**
  - IV. **Temporary and Preliminary Notices in force.**
- 
- 

© Commonwealth of Australia 2024

This work is copyright. Apart from any use permitted under the Copyright Act 1968, no part may be reproduced by any process, adapted, communicated or commercially exploited without prior written permission from The Commonwealth represented by the Australian Hydrographic Office.

## IMPORTANT NOTICE

This edition of Notices to Mariners includes all significant information affecting AHO products which the AHO has become aware of since the last edition. All reasonable efforts have been made to ensure the accuracy and completeness of the information, including third party information, on which these updates are based. The AHO regards third parties from which it receives information as reliable, however the AHO cannot verify all such information and errors may therefore exist. The AHO does not accept liability for errors in third party information.

---

## GENERAL INSTRUCTIONS

The substance of these notices should be inserted on the charts affected.

Bearings are referred to the true compass and are reckoned clockwise from North; those relating to lights are given as seen by an observer from seaward.

Positions quoted in notices relate to WGS84 which is the horizontal datum for all charts produced by the Australian Hydrographic Office.

The range quoted for a light is its nominal range.

Depths are with reference to the chart datum of each chart. Heights are above mean high water springs or mean higher high water, as appropriate.

The capital letter (P) or (T) after the number of any notice denotes a preliminary or temporary notice respectively, which are contained separately at the end of the permanent notices.

---

## REPORTING OF DANGERS

Mariners are particularly requested to notify the AUSTRALIAN HYDROGRAPHIC OFFICE, Locked Bag 8801 Wollongong, NSW 2500 (e-mail [datacentre@hydro.gov.au](mailto:datacentre@hydro.gov.au) or, alternatively by filling in and submitting the [Hydrographic Notes](#) forms located on the web site – [www.hydro.gov.au](http://www.hydro.gov.au)), immediately on the discovery of new dangers or suspected dangers to navigation. For changes or defects in aids to navigation notify AusSAR (Fax 02-6230 6868 or email [rccaus@amsa.gov.au](mailto:rccaus@amsa.gov.au)).

---

## AUTHORISED USE

Copies of Australian notices are available free of charge from the Australian Hydrographic Office (AHO) website ([www.hydro.gov.au](http://www.hydro.gov.au)) and through the eNotices (email) service ([www.hydro.gov.au/enotices/enotices.htm](http://www.hydro.gov.au/enotices/enotices.htm)).

Individual Notices may be copied for the purpose of inserting Notice substance on official charts and publications. Paper copies may be printed by chart agents and distributed to customers on a cost recovery basis. Participating chart agents are listed on the AHO website as providing a 'Paper Notices to Mariners' service ([www.hydro.gov.au/webapps/jsp/agents/agents-list.jsp](http://www.hydro.gov.au/webapps/jsp/agents/agents-list.jsp)). Copies of the notices may not be sold for profit without prior written agreement.

## NUMERICAL INDEX OF NOTICES TO MARINERS

### Edition No 9

Notices	Aus Chart, INT Chart, ENC Cell, AHP, BA Pubs
311	PNG 680
312	Products - New Charts and New Editions to be published shortly
313	Aus 198
314	Aus 812, 813
315	Aus 813
316	Aus 237
317	Aus 827
318	PNG 674, 677
319	Aus 837, 839, 840
320	Aus 318, 319, 728
321	Aus 328
322	Aus 327, 742, 4723, INT 723
323	Aus 179, 800
324(T)	Aus 255, 826
325(T)	Aus 817
326(T)	Aus 249, 250, 251, 367, 821, 823, 824
327(T)	PNG 674, 677
328(T)	Aus 25, 26
329(T)	Aus 25, 26
330(T)	Aus 14
331(T)	Aus 65, 327, 328, 742
332(T)	Aus 328
333(T)	Aus 745
334(T)	Aus 57, 327
335(T)	Aus 327, 742
336(T)	Aus 319
337(T)	Aus 120, 341
338(T)	Aus 357, 487
339(T)	Aus 349, 487
340(T)	Aus 143
341(T)	Aus 144
342(T)	Aus 155
343(T)	Aus 179
344(T)	Aus 177, 792
345(T)	Aus 171

## NUMERICAL INDEX OF CHARTS AFFECTED

### Edition No 9

Aus Chart	Notices
Aus 14	330(T)
Aus 25	328(T), 329(T)
Aus 26	328(T), 329(T)
Aus 57	334(T)
Aus 65	331(T)
Aus 120	337(T)
Aus 143	340(T)
Aus 144	341(T)
Aus 155	342(T)
Aus 171	345(T)
Aus 177	344(T)
Aus 179	323, 343(T)
Aus 198	313
Aus 237	316
Aus 249	326(T)
Aus 250	326(T)
Aus 251	326(T)
Aus 255	324(T)
Aus 318	320
Aus 319	320, 336(T)
Aus 327	322, 331(T), 334(T), 335(T)
Aus 328	321, 331(T), 332(T)
Aus 341	337(T)
Aus 349	339(T)
Aus 357	338(T)
Aus 367	326(T)
Aus 487	338(T), 339(T)
Aus 728	320
Aus 742	322, 331(T), 335(T)
Aus 745	333(T)
Aus 792	344(T)
Aus 800	323
Aus 812	314
Aus 813	314, 315
Aus 817	325(T)
Aus 821	326(T)
Aus 823	326(T)
Aus 824	326(T)
Aus 826	324(T)
Aus 827	317
Aus 837	319
Aus 839	319
Aus 840	319
Aus 4723	322
PNG 674	318, 327(T)
PNG 677	318, 327(T)
PNG 680	311

INT Chart	Notices
INT 723	322

**311 AUSTRALIA - Products - New Charts, New Editions, Withdrawn Charts**

Australian Hydrographic Office

**New Charts**

<i>Chart</i>	<i>Title and Geographical limits</i>	<i>Scale</i>	<i>Publication Date</i>	<i>Remarks</i>
NIL				

**New Electronic Navigation Chart (Aus ENC)**

<i>Cell Name</i>	<i>Title</i>	<i>Publication Date</i>	<i>Remarks</i>
NIL			

**New Editions and Withdrawn Charts**

<i>Chart</i>	<i>Title</i>	<i>Scale</i>	<i>Publication Date</i>	<i>Remarks</i>
PNG 680 <b>(Edition 2)</b>	Papua New Guinea - New Britain - Approaches to Blanche Bay Plan: Simpson and Matupit Harbour	1:75 000  1:12 500	26 April 2024	New edition with general updating throughout; including new bathymetric data. <b>Chart PNG 680 Edition 1 dated 6 September 2019 is now superseded and must be withdrawn from use.</b>

**Chart permanently withdrawn**

Charts listed above as withdrawn no longer meet chart carriage requirements and should be marked as "superseded" and replaced with the new chart/ new edition listed prior to passage through the area covered by the new chart.

When placing orders with a chart agent between notice of forthcoming edition and its publication, mariners should advise whether their order pertains to the current edition or the new edition.

For further details refer to the AHO website at [www.hydro.gov.au](http://www.hydro.gov.au) for new edition and new chart stock arrival information.

**312 AUSTRALIA - Products - New Charts and New Editions to be published shortly**

Australian Hydrographic Office

**New Charts to be published shortly**

<i>Chart</i>	<i>Title</i>	<i>Scale</i>	<i>Remarks</i>
NIL			

**New Editions to be published shortly**

<i>Chart</i>	<i>Title</i>	<i>Scale</i>	<i>Remarks</i>
NIL			

**313 AUSTRALIA - NEW SOUTH WALES - Botany Bay and Port Hacking - Chart note**

Australian Hydrographic Office

*Note:* position of existing chart notes may vary on certain charts.

**Aus 198 [268/2024]**

Delete	chart note, PILOT BOARDING PLACE	33° 57'.4 S	151° 04'.9 E
--------	----------------------------------	-------------	--------------

**314 AUSTRALIA - NEW SOUTH WALES - Brooms Head - Navline**

Transport for NSW

**Aus 812 [88/2024]**

Insert	a dashed line in a direction 057° for a distance of 0.13M, thence a continuous line for 1.49M, with legend 237°, emanating from beacon	29° 36'.45 S	153° 20'.16 E
--------	--	--------------	---------------

Delete	dashed and continuous line with legend, 241°, emanating from beacon	29° 36'.5 S	153° 20'.2 E
--------	---	-------------	--------------

**Aus 813 [237/2024]**

Insert	a dashed line in a direction 057° for a distance of 0.13M, thence a continuous line for 1.49M, with legend 237°, emanating from beacon	29° 36'.45 S	153° 20'.16 E
--------	--	--------------	---------------

Delete	dashed and continuous line with legend, 241°, emanating from beacon	29° 36'.5 S	153° 20'.2 E
--------	---	-------------	--------------

**315 AUSTRALIA - NEW SOUTH WALES - Evans Head - Lights**

Transport for NSW

**Aus 813 [314/2024]**

Amend	light to <i>Fl.WR.5s 51m 7M</i>	29° 07'.1 S	153° 26'.9 E
	light to <i>F.R (occas)</i>	29° 11'.1 S	153° 24'.1 E

**316 AUSTRALIA - QUEENSLAND - Brisbane River - Pelican Banks Reach - Light buoy**

Maritime Safety Queensland Notice 178/2024

**Aus 237 [922/2023]**

Move	light buoy	27° 23'.47 S	153° 09'.35 E
	to	27° 23'.495 S	153° 09'.349 E

**317 AUSTRALIA - QUEENSLAND - Townsville - Pilot boarding place**

UKHO

**Aus 827 [210/2024]**

Delete	pilot boarding place and legend, B	19° 09'.5 S	146° 55'.5 E
--------	------------------------------------	-------------	--------------

**318 PAPUA NEW GUINEA - Kimbe - Light beacons**

National Maritime Safety Authority PNG Final ATH PNG001/2024, Final ATH PNG002/2024

**PNG 674 [103/2022]**

Insert	structure colour, G	5° 31'.985 S	150° 09'.565 E
	starboard lateral light beacon, <i>Fl(3)G.9s</i> , with topmark	5° 32'.657 S	150° 09'.066 E

**PNG 677 (Kimbe) [103/2022]**

Insert	starboard lateral light beacon, <i>Fl.G.5s 8m 4M No3</i> , with topmark	5° 31'.985 S	150° 09'.565 E
	starboard lateral light beacon, <i>Fl(3)G.9s 8m 4M No4</i> , with topmark	5° 32'.657 S	150° 09'.066 E

Delete	light beacon	5° 32'.00 S	150° 09'.56 E
	depth, 5 <sub>6</sub> m	5° 32'.65 S	150° 09'.06 E

**319 AUSTRALIA - TORRES STRAIT - Great North East Channel - Coconut Island - Speed restriction**

Australian Maritime Safety Authority

Note: position of existing chart notes may vary on certain charts.

**Aus 837 [209/2024]**

Insert	magenta legend, <i>Coconut Island Speed Limit (see Note)</i>	10° 01'.00 S	143° 11'.50 E
	accompanying chart note, COCONUT ISLAND SPEED LIMIT	10° 58'.0 S	144° 06'.5 E

**Aus 839 [209/2024]**

Insert	magenta legend, <i>Coconut Island Speed Limit (see Note)</i>	9° 54'.60 S	143° 09'.61 E
Replace	legend, Great North East Channel (see Note), with magenta legend, <i>Coconut Island Speed Limit (see Note)</i>	10° 11'.5 S	142° 58'.3 E
	chart note, GREAT NORTH EAST CHANNEL, with accompanying chart note, COCONUT ISLAND SPEED LIMIT	11° 15'.0 S	142° 31'.3 E

**Aus 840 [307/2023]**

Insert	magenta legend, <i>Coconut Island Speed Limit (see Note)</i>	9° 54'.60 S	143° 09'.61 E
Replace	chart note, GREAT NORTH EAST CHANNEL, with accompanying chart note, COCONUT ISLAND SPEED LIMIT	9° 09'.8 S	142° 51'.5 E
Delete	legend, Great North East Channel (see Note)	9° 25'.2 S	143° 33'.7 E

**320 AUSTRALIA - WESTERN AUSTRALIA - Cambridge Gulf to Bougainville Peninsula - Depths; rocks; reefs**

Surrich Hydrographics

**Aus 318 [1056/2021]**

Insert	accompanying block A	13° 56'.5 S	126° 04'.0 E
--------	----------------------	-------------	--------------

**Aus 318 [1056/2021]**

Insert	<b>(Cambridge Gulf)</b> accompanying block B	15° 02'.0 S	128° 11'.0 E
--------	--	-------------	--------------

**Aus 319 [182/2024]**

Insert	accompanying block	13° 56'.5 S	126° 04'.0 E
--------	--------------------	-------------	--------------

**Aus 728 [264/2023]**

Insert	accompanying block	13° 56'.5 S	126° 04'.0 E
--------	--------------------	-------------	--------------

**321 AUSTRALIA - WESTERN AUSTRALIA - Montebello Islands - Well northwestwards**

Woodside Energy Ltd

**Aus 328 [247/2024]**

Insert	depth, 177m, enclosed by danger circle with legend, <i>Well</i>	19° 56'.48 S	115° 13'.74 E
--------	---	--------------	---------------

**322 AUSTRALIA - WESTERN AUSTRALIA - Montebello Islands - Trimouille Island - Lit platform; obstruction eastwards**

Santos

**Aus 327 [245/2024]**

Insert	depth, 34m, enclosed by danger circle with legend, <i>Obstn</i>	20° 24'.85 S	115° 43'.81 E
--------	---	--------------	---------------

Delete	lit platform, Mo(U)Y.15s, and legend, Campbell	20° 24'.8 S	115° 43'.8 E
--------	--	-------------	--------------

**Aus 742 [57/2024]**

Insert	depth, 34m, enclosed by danger circle with legend, <i>Obstn</i>	20° 24'.85 S	115° 43'.81 E
--------	---	--------------	---------------

Delete	lit platform, Mo(U)Y.15s, and legend, CAMPBELL	20° 24'.8 S	115° 43'.8 E
--------	--	-------------	--------------

**Aus 4723 (INT 723) [245/2024]**

Insert	depth, 34m, enclosed by danger circle with legend, <i>Obstn</i>	20° 24'.8 S	115° 43'.8 E
--------	---	-------------	--------------

Delete	lit platform and legend, Campbell	20° 24'.8 S	115° 43'.8 E
--------	-----------------------------------	-------------	--------------

**323 AUSTRALIA - TASMANIA - Franklin Sound - Great Dog Island - Light**  
Marine and Safety Tasmania Notice M156(T)/2024

**Aus 179 (Franklin Sound)** [236/2023]  
Amend light to *Fl.WRG.3s 6M*

40° 14'.8 S 148° 15'.8 E

**Aus 800** [NE 9/6/2023]  
Amend light to *Fl.WRG.3s*

40° 14'.8 S 148° 15'.8 E



**324(T)/2024 AUSTRALIA - QUEENSLAND - Abbot Point - Bald Hill - Lights altered**  
Maritime Safety Queensland Notice 175(T)/2024

The light, *WR & Fl.4s 56m 12M (F Day)* (19° 53'.14 S 148° 04'.55 E), has been temporarily altered to *Fl.4s (F Day)*.

**Chart temporarily affected - Aus 255 - Aus 826**

**325(T)/2024 AUSTRALIA - QUEENSLAND - Great Sandy Strait - Ship Channel - Wreck**  
Maritime Safety Queensland Notice 171(T)/2024

A stranded wreck marked by a light, *Fl.Y.2.5s*, exists in position 25° 13'.57 S 152° 56'.43 E.

Mariners are advised to navigate with caution in the area.

**Chart temporarily affected - Aus 817**

**326(T)/2024 AUSTRALIA - QUEENSLAND - Hay Point to Hydrographers Passage - Survey operations**  
Maritime Safety Queensland Notice 160(T)/2024

MV *Outer Limit*, with a towed array, is conducting survey operations between Hay Point (21° 15'.56 S 149° 19'.03 E) and Hydrographers Passage (20° 06'.47 S 150° 16'.21 E).

The vessel will display appropriate lights and shapes and will monitor VHF Ch 10 and Ch 16.

Mariners are advised to navigate with caution in the area.

**Chart temporarily affected - Aus 249 - Aus 250 - Aus 251 - Aus 367 - Aus 821 - Aus 823 - Aus 824**

**327(T)/2024 PAPUA NEW GUINEA - Kimbe - Light beacon relit**

*Former Notice - 516(T)/2020* is cancelled

National Maritime Safety Authority PNG Final ATH PNG001/2024

Cancel this notice on receipt.

**Chart formerly affected - PNG 674 - PNG 677**

**328(T)/2024 AUSTRALIA - NORTHERN TERRITORY - Darwin - Scientific instruments**  
O2 Marine

Special light buoys, *Fl.Y.4s*, exist in the following positions:

12° 23'.34 S 130° 39'.82 E  
12° 23'.46 S 130° 48'.64 E  
12° 23'.78 S 130° 44'.15 E  
12° 24'.54 S 130° 45'.06 E  
12° 25'.95 S 130° 48'.92 E  
12° 26'.16 S 130° 46'.22 E  
12° 28'.20 S 130° 46'.08 E  
12° 29'.26 S 130° 47'.99 E  
12° 30'.09 S 130° 52'.49 E  
12° 32'.91 S 130° 52'.51 E.

**Chart temporarily affected - Aus 25 - Aus 26**

**329(T)/2024 AUSTRALIA - NORTHERN TERRITORY - Darwin - Dredging operations completed**

*Former Notice - 1059(T)/2023* is cancelled

Northern Territory Government

Cancel this notice on receipt.

**Chart formerly affected - Aus 25 - Aus 26**

**330(T)/2024 AUSTRALIA - NORTHERN TERRITORY - Groote Eylandt - Milner Bay - Wharf damaged; light unlit; light buoy unlit; light buoy removed**

Former Notice - 295(T)/2024 is cancelled  
Northern Territory Government Notice 7(T)/2024

The main wharf has been damaged. An exclusion zone exists in an area bounded by the following:

Position	Remarks
13° 51'.58 S 136° 24'.97 E	
13° 51'.55 S 136° 24'.91 E	
13° 51'.61 S 136° 24'.91 E	marked by special light buoy, <i>Fl.Y.2s</i>
13° 51'.64 S 136° 24'.93 E	marked by special light buoy, <i>Fl.Y.2s</i>
13° 51'.68 S 136° 24'.95 E	marked by special light buoy, <i>Fl.Y.2s</i>
13° 51'.72 S 136° 24'.97 E	marked by special light buoy, <i>Fl.Y.2s</i>
13° 51'.67 S 136° 24'.98 E	
13° 51'.56 S 136° 25'.04 E	
13° 51'.56 S 136° 25'.04 E.	

Only vessels belonging to South 32, NT Water Police, emergency services and those exempt by the Director, Marine Safety NT are permitted to enter the area.

The light, *F.R* (13° 51'.55 S 136° 24'.92 E), is unlit.

The special light buoy, *Fl.Y.2s* (13° 51'.80 S 136° 24'.70 E), is unlit.

The special light buoy, *Q(5)Y.20s* (13° 51'.77 S 136° 25'.05 E), has been temporarily removed.

Mariners are advised to navigate with caution in the area.

**Chart temporarily affected - Aus 14**

**331(T)/2024 AUSTRALIA - WESTERN AUSTRALIA - Barrow Island - Subsea operations northwestwards completed**

Former Notice - 192(T)/2024 is cancelled  
DOF Management

Cancel this notice on receipt.

**Chart formerly affected - Aus 65 - Aus 327 - Aus 328 - Aus 742**

**332(T)/2024 AUSTRALIA - WESTERN AUSTRALIA - Barrow Island - Subsea operations northwestwards**

DOF Management Australia Pty Ltd

MV *Skandi Singapore* is conducting subsea operations in the vicinity of position 20° 29'.69 S 114° 53'.84 E.

A 1500m radius exclusion zone exists around the vessel.

Mariners are advised to navigate with caution in the area.

**Chart temporarily affected - Aus 328**

**333(T)/2024 AUSTRALIA - WESTERN AUSTRALIA - Cape Range - Tantabiddi - Scientific instruments recovered**

Former Notice - 116(T)/2024 is cancelled  
Department of Transport WA

Cancel this notice on receipt.

**Chart formerly affected - Aus 745**

**334(T)/2024 AUSTRALIA - WESTERN AUSTRALIA - Dampier - Rio Tinto Channel - AIS and racon inoperative**

Pilbara Ports Authority Notice D12(T)/2024

The AIS and Racon(M) at special light buoy, *Q(4)Y.6s Sea Buoy* (20° 25'.45 S 116° 42'.92 E), are inoperative.

**Chart temporarily affected - Aus 57 - Aus 327**

**335(T)/2024 AUSTRALIA - WESTERN AUSTRALIA - Dampier Archipelago - Mooring buoy relit northwards**

Former Notice - 945(T)/2023 is cancelled  
Vermilion Oil and Gas Australia

Cancel this notice on receipt.

**Chart formerly affected - Aus 327 - Aus 742**

**336(T)/2024 AUSTRALIA - WESTERN AUSTRALIA - Goeree Shoal - Mooring buoys removed**

Former Notice - 120(T)/2024 is cancelled  
Delmar Systems

Cancel this notice on receipt.

**Chart formerly affected - Aus 319**

**337(T)/2024 AUSTRALIA - SOUTH AUSTRALIA - Denial Bay - Obstruction**

Department for Infrastructure and Transport SA Notice 23(T)/2024

A lost anchor exists in position 32° 14'.87 S 133° 30'.18 E.

Mariners are advised to navigate with caution in the area.

**Chart temporarily affected - Aus 120 - Aus 341**

**338(T)/2024 AUSTRALIA - VICTORIA - Ninety Mile Beach - Restricted areas southeastwards**

National Offshore Petroleum Safety and Environmental Management Authority

A restricted area, with radius 500m, exists centred on position 38° 30'.90 S 148° 28'.08 E and 38° 30'.35 S 148° 32'.72 E.

**Chart temporarily affected - Aus 357 - Aus 487**

**339(T)/2024 AUSTRALIA - VICTORIA - Port Campbell - Subsea operations southwards completed**

Former Notice - 79(T)/2024 is cancelled  
Subsea 7

Cancel this notice on receipt.

**Chart formerly affected - Aus 349 - Aus 487**

**340(T)/2024 AUSTRALIA - VICTORIA - Port Phillip - Sorrento - Harbour works**

Parks Victoria Notice 155(T)/2024

Construction works are in progress at Sorrento Ferry Terminal (38° 20'.16 S 144° 44'.75 E).

An exclusion zone exists in an area bounded by the coast and the following:

<i>Position</i>	<i>Remarks</i>
38° 20'.20 S 144° 44'.72 E	marked by buoy
38° 20'.21 S 144° 44'.74 E	marked by buoy
38° 20'.21 S 144° 44'.76 E	marked by buoy
38° 20'.22 S 144° 44'.80 E	marked by buoy
38° 20'.23 S 144° 44'.83 E	marked by buoy
38° 20'.16 S 144° 44'.78 E.	

Only vessels involved in the works, Searoad Ferries and Parks Victoria officers are permitted to enter the area.

All hazards to navigation will display appropriate lights and shapes.

Mariners are advised to navigate with caution in the area.

**Chart temporarily affected - Aus 143**

**341(T)/2024 AUSTRALIA - VICTORIA - Port Phillip - Collins Bay - Light buoy restored**

Former Notice - 41(T)/2024 is cancelled  
Parks Victoria Notice 154/2024

Cancel this notice on receipt.

**Chart formerly affected - Aus 144****342(T)/2024 AUSTRALIA - VICTORIA - Port Phillip - Brighton - Light buoy restored**

Former Notice - 81(T)/2024 is cancelled  
Parks Victoria Notice 160/2024

Cancel this notice on receipt.

**Chart formerly affected - Aus 155****343(T)/2024 AUSTRALIA - TASMANIA - Franklin Sound - Lady Barron - Wreck**

Marine and Safety Tasmania Notice M159(T)/2024

A wreck marked by an isolated danger light buoy, Q(2)5s, exists in position 40° 12'.85 S 148° 14'.74 E.

**Chart temporarily affected - Aus 179****344(T)/2024 AUSTRALIA - TASMANIA - Macquarie Harbour - Scientific instrument**

Marine and Safety Tasmania Notice M155(T)/2024

A scientific instrument, 10m below the surface, exists in position 42° 18'.56 S 145° 23'.32 E.

**Chart temporarily affected - Aus 177 - Aus 792****345(T)/2024 AUSTRALIA - TASMANIA - River Derwent - Wrest Point - Light buoy unlit**

Marine and Safety Tasmania Notice M144(T)/2024

The light buoy, Fl.Y.6s (42° 54'.00 S 147° 20'.98 E), is unlit.

**Chart temporarily affected - Aus 171**

II

**HYDROGRAPHIC REPORTS**

NIL

*To accompany Australian Notice to Mariners 319/2024*

COCONUT ISLAND SPEED LIMIT

To minimise ship wake and enhance personnel safety at Coconut Island, coastal pilots and shipmasters are requested not to exceed 15 knots when within 10 miles of the island, if safe and practical to do so. Ships are encouraged to navigate as far west of the island as safe and practical, while remaining within the IMO-adopted Two-Way Route.

*Note for chart Aus 837*

*To accompany Australian Notice to Mariners 319/2024*

COCONUT ISLAND SPEED LIMIT

To minimise ship wake and enhance personnel safety at Coconut Island, coastal pilots and shipmasters are requested not to exceed 15 knots when within 10 miles of the island, if safe and practical to do so. Ships are encouraged to navigate as far west of the island as safe and practical, while remaining within the IMO-adopted Two-Way Route.

*Note for chart Aus 839*

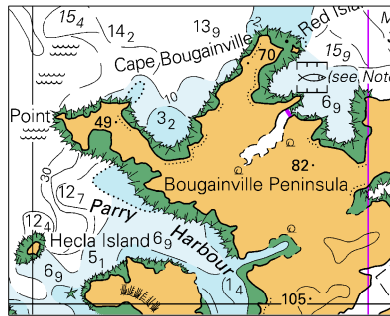
*To accompany Australian Notice to Mariners 319/2024*

COCONUT ISLAND SPEED LIMIT

To minimise ship wake and enhance personnel safety at Coconut Island, coastal pilots and shipmasters are requested not to exceed 15 knots when within 10 miles of the island, if safe and practical to do so. Ships are encouraged to navigate as far west of the island as safe and practical, while remaining within the IMO-adopted Two-Way Route.

*Note for chart Aus 840*

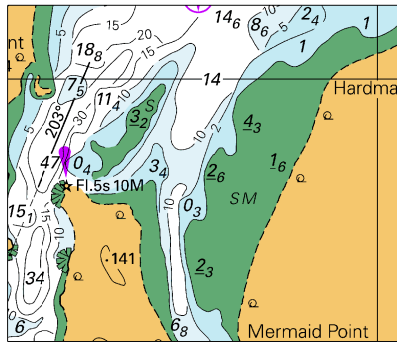
To accompany Australian Notice to Mariners 320/2024



Block A for chart Aus 318 (51.0 x 40.9mm)

© Commonwealth of Australia 2024

To accompany Australian Notice to Mariners 320/2024

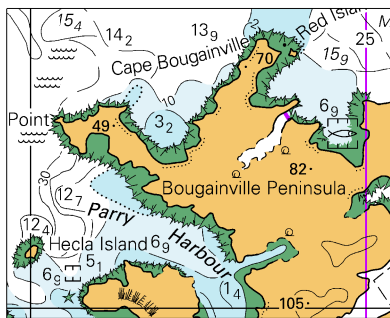


Block B for chart Aus 318 (52.4 x 44.4mm)

© Commonwealth of Australia 2024



To accompany Australian Notice to Mariners 320/2024



Block for chart Aus 319 (51.3 x 40.9mm)  
© Commonwealth of Australia 2024

