



8 November 2024

Edition 23

# AUSTRALIAN NOTICES TO MARINERS

**Notices 834 - 889**

Published fortnightly by the Australian Hydrographic Office



Australian Notices to Mariners are the authority for correcting charts and publications published by the Australian Hydrographic Office covering Australia, Papua New Guinea, Solomon Islands, Australian Antarctic Territory and Timor-Leste.

Commodore R.L. PHILLIPS RAN  
*Hydrographer of Australia*

---

## SECTIONS.

- I. **Australian Notices to Mariners, including blocks and notes.**
- II. **Hydrographic Reports.**

## SUPPLEMENTS.

- I. **Tracings**
  - II. **Cumulative List of Australian Notices to Mariners.**
  - III. **Cumulative List of Temporary and Preliminary Australian Notices to Mariners.**
  - IV. **Temporary and Preliminary Notices in force.**
- 
- 

© Commonwealth of Australia 2024

This work is copyright. Apart from any use permitted under the Copyright Act 1968, no part may be reproduced by any process, adapted, communicated or commercially exploited without prior written permission from The Commonwealth represented by the Australian Hydrographic Office.

## IMPORTANT NOTICE

This edition of Notices to Mariners includes all significant information affecting AHO products which the AHO has become aware of since the last edition. All reasonable efforts have been made to ensure the accuracy and completeness of the information, including third party information, on which these updates are based. The AHO regards third parties from which it receives information as reliable, however the AHO cannot verify all such information and errors may therefore exist. The AHO does not accept liability for errors in third party information.

---

## GENERAL INSTRUCTIONS

The substance of these notices should be inserted on the charts affected.

Bearings are referred to the true compass and are reckoned clockwise from North; those relating to lights are given as seen by an observer from seaward.

Positions quoted in notices relate to WGS84 which is the horizontal datum for all charts produced by the Australian Hydrographic Office.

The range quoted for a light is its nominal range.

Depths are with reference to the chart datum of each chart. Heights are above mean high water springs or mean higher high water, as appropriate.

The capital letter (P) or (T) after the number of any notice denotes a preliminary or temporary notice respectively, which are contained separately at the end of the permanent notices.

---

## REPORTING OF DANGERS

Mariners are particularly requested to notify the AUSTRALIAN HYDROGRAPHIC OFFICE, Locked Bag 8801 Wollongong, NSW 2500 (e-mail [datacentre@hydro.gov.au](mailto:datacentre@hydro.gov.au) or, alternatively by filling in and submitting the [Hydrographic Notes](#) forms located on the web site – [www.hydro.gov.au](http://www.hydro.gov.au)), immediately on the discovery of new dangers or suspected dangers to navigation. For changes or defects in aids to navigation notify AusSAR (Fax 02-6230 6868 or email [rccaus@amsa.gov.au](mailto:rccaus@amsa.gov.au)).

---

## AUTHORISED USE

Copies of Australian notices are available free of charge from the Australian Hydrographic Office (AHO) website ([www.hydro.gov.au](http://www.hydro.gov.au)) and through the eNotices (email) service ([www.hydro.gov.au/enotices/enotices.htm](http://www.hydro.gov.au/enotices/enotices.htm)).

Individual Notices may be copied for the purpose of inserting Notice substance on official charts and publications. Paper copies may be printed by chart agents and distributed to customers on a cost recovery basis. Participating chart agents are listed on the AHO website as providing a 'Paper Notices to Mariners' service ([www.hydro.gov.au/prodserv/agents-list.htm](http://www.hydro.gov.au/prodserv/agents-list.htm)). Copies of the notices may not be sold for profit without prior written agreement.

## NUMERICAL INDEX OF NOTICES TO MARINERS

### Edition No 23

Notices	Aus Chart, INT Chart, ENC Cell, AHP, BA Pubs
834	Products - New Charts, New Editions, Withdrawn Charts
835	Aus 313
836	Aus 808
837	Aus 207
838	Aus 200
839	Aus 200
840	Aus 292, 839
841	Aus 817
842	Aus 6
843	Aus 260, 367, 822
844	Aus 721
845	Aus 328
846	Aus 50
847	Aus 324
848	Aus 331
849	Aus 332
850	Aus 4708, 4723, INT 708, 723
851	Aus 746
852	Aus 745
853	Aus 4071, INT 71
854	Aus 485, 781
855	Aus 120, 341
856	Aus 343, 485, 776
857	Aus 487, 800
858	Aus 171, 796
859(T)	Aus 812, 813, 4602, INT 602
860(T)	Aus 807, 808
861(T)	Aus 811
862(T)	Aus 237
863(T)	Aus 245
864(T)	Aus 256, 827
865(T)	Aus 256
866(T)	Aus 700, 842
867(T)	Aus 294, 296, 301, 700, 842
868(T)	Aus 25, 26
869(T)	Aus 26
870(T)	Aus 25, 26, 309, 316
871(T)	Aus 310
872(T)	Aus 328
873(T)	Aus 328
874(T)	Aus 309, 310, 311
875(T)	Aus 50
876(T)	Aus 57, 327, 742
877(T)	Aus 81
878(T)	Aus 327
879(T)	Aus 318
880(T)	Aus 328, 329, 744
881(T)	Aus 485, 780
882(T)	Aus 343, 346, 485, 776, 780, 781
883(T)	Aus 777
884(T)	Aus 136, 778
885(T)	Aus 181, 357, 487, 802
886(T)	Aus 357, 487
887(T)	Aus 143, 151, 349, 487, 801, 802
888(T)	Aus 349
889(T)	Aus 143

## NUMERICAL INDEX OF CHARTS AFFECTED

### Edition No 23

Aus Chart	Notices
Aus 6	842
Aus 25	868(T), 870(T)
Aus 26	868(T), 869(T), 870(T)
Aus 50	846, 875(T)
Aus 57	876(T)
Aus 81	877(T)
Aus 120	855
Aus 136	884(T)
Aus 143	887(T), 889(T)
Aus 151	887(T)
Aus 171	858
Aus 181	885(T)
Aus 200	838, 839
Aus 207	837
Aus 237	862(T)
Aus 245	863(T)
Aus 256	864(T), 865(T)
Aus 260	843
Aus 292	840
Aus 294	867(T)
Aus 296	867(T)
Aus 301	867(T)
Aus 309	870(T), 874(T)
Aus 310	871(T), 874(T)
Aus 311	874(T)
Aus 313	835
Aus 316	870(T)
Aus 318	879(T)
Aus 324	847
Aus 327	876(T), 878(T)
Aus 328	845, 872(T), 873(T), 880(T)
Aus 329	880(T)
Aus 331	848
Aus 332	849
Aus 341	855
Aus 343	856, 882(T)
Aus 346	882(T)
Aus 349	887(T), 888(T)
Aus 357	885(T), 886(T)
Aus 367	843
Aus 485	854, 856, 881(T), 882(T)
Aus 487	857, 885(T), 886(T), 887(T)
Aus 700	866(T), 867(T)
Aus 721	844
Aus 742	876(T)
Aus 744	880(T)
Aus 745	852
Aus 746	851
Aus 776	856, 882(T)
Aus 777	883(T)
Aus 778	884(T)
Aus 780	881(T), 882(T)
Aus 781	854, 882(T)
Aus 796	858

Aus Chart	Notices
Aus 800	857
Aus 801	887(T)
Aus 802	885(T), 887(T)
Aus 807	860(T)
Aus 808	836, 860(T)
Aus 811	861(T)
Aus 812	859(T)
Aus 813	859(T)
Aus 817	841
Aus 822	843
Aus 827	864(T)
Aus 839	840
Aus 842	866(T), 867(T)
Aus 4071	853
Aus 4602	859(T)
Aus 4708	850
Aus 4723	850

INT Chart	Notices
INT 71	853
INT 602	859(T)
INT 708	850
INT 723	850

**834 AUSTRALIA - Products - New Charts, New Editions, Withdrawn Charts**

Australian Hydrographic Office

**New Charts**

Chart	Title and Geographical limits	Scale	Publication Date	Remarks
NIL				

**New Electronic Navigation Chart (Aus ENC)**

Cell Name	Title	Publication Date	Remarks
AU5OYP01	Australia - Queensland - Oyster Point (Port Hinchinbrook Marina)	7/11/2024	AU5258P2 is withdrawn.

**New Editions and Withdrawn Charts**

Chart	Title	Scale	Publication Date	Remarks
NIL				

**Chart permanently withdrawn**

Charts listed above as withdrawn no longer meet chart carriage requirements and should be marked as "superseded" and replaced with the new chart/ new edition listed prior to passage through the area covered by the new chart.

When placing orders with a chart agent between notice of forthcoming edition and its publication, mariners should advise whether their order pertains to the current edition or the new edition.

For further details refer to the AHO website at [www.hydro.gov.au](http://www.hydro.gov.au) for new edition and new chart stock arrival information.

**835 AUSTRALIA - Products - New Charts and New Editions to be published shortly**

Australian Hydrographic Office

**New Charts to be published shortly**

Chart	Title	Scale	Remarks
NIL			

**New Editions to be published shortly**

Chart	Title	Scale	Remarks
Aus 313	Timor-Leste - Timor Sea - Approaches to Timor-Leste	1:300 000	New edition with general updating throughout; including new submarine cable.

**836 AUSTRALIA - NEW SOUTH WALES - Botany Bay - Lights; navline**

Australian Hydrographic Office

**Aus 808 [803/2024]**

Delete	dashed and continuous line with legend, 312°, emanating from light	33° 58'.0 S	151° 11'.1 E
	light, F.WRG & F.RG.	33° 58'.0 S	151° 11'.1 E

**837 AUSTRALIA - NEW SOUTH WALES - Newcastle - Navlines**

Port Authority of New South Wales

**Aus 207 [542/2024]**

Delete	dashed line and legend, 060·5°, between	32° 54'.83 S	151° 48'.07 E
		32° 54'.50 S	151° 48'.78 E
	dashed line, between	32° 54'.50 S	151° 48'.64 E
		32° 54'.58 S	151° 49'.04 E
	dashed line, between	32° 54'.50 S	151° 48'.78 E
		32° 54'.78 S	151° 48'.90 E
	magenta arrow, centred on	32° 54'.68 S	151° 48'.39 E

**838 AUSTRALIA - NEW SOUTH WALES - Port Jackson - Middle Head to Quarantine Beach - Nav aids**

Transport for NSW

**Aus 200 [802/2024]**

Replace	beacon with triangular daymark apex down	33° 48'.83 S	151° 17'.25 E
	beacon with triangular daymark apex up	33° 49'.05 S	151° 17'.22 E
Delete	beacon	33° 49'.61 S	151° 16'.02 E

**839 AUSTRALIA - NEW SOUTH WALES - Port Jackson - Middle Harbour - Folly Point to Sugarloaf Point - Nav aids**

Transport for NSW

**Aus 200 [838/2024]**

Move	light beacon to	33° 49'.08 S 33° 49'.078 S	151° 13'.27 E 151° 13'.246 E
Delete	topmark topmark	33° 47'.66 S 33° 48'.83 S	151° 13'.75 E 151° 13'.98 E

**840 AUSTRALIA - QUEENSLAND - Adolphus Channel - Depths**

Department of Defence

**Aus 292 [634/2024]**

Insert	depth, 18 <sub>g</sub> m, enclosed by contour	10° 38'.22 S	142° 34'.64 E
	depth, 16m, and extend contour SE to enclose	10° 39'.68 S	142° 36'.56 E
	depth, 13 <sub>g</sub> m, enclosed by contour	10° 41'.18 S	142° 34'.82 E
Replace	depth, 15 <sub>4</sub> m, with depth, 14 <sub>7</sub> m, enclosed by contour	10° 36'.7 S	142° 30'.2 E
	depth, 22 <sub>g</sub> m, with depth, 20 <sub>7</sub> m	10° 41'.4 S	142° 36'.4 E
Delete	depth, 18 <sub>g</sub> m	10° 39'.5 S	142° 36'.5 E

**Aus 839 [429/2024]**

Insert	depth, 18 <sub>g</sub> m, enclosed by contour	10° 38'.22 S	142° 34'.64 E
	depth, 16m, and extend contour SE to enclose	10° 39'.68 S	142° 36'.56 E
	depth, 13 <sub>g</sub> m, enclosed by contour	10° 41'.18 S	142° 34'.82 E
	depth, 20 <sub>7</sub> m	10° 41'.41 S	142° 36'.44 E
Replace	depth, 15 <sub>4</sub> m, with depth, 14 <sub>7</sub> m, enclosed by contour	10° 36'.7 S	142° 30'.2 E
Delete	depth, 18 <sub>g</sub> m	10° 39'.5 S	142° 36'.5 E
	depth, 17 <sub>4</sub> m	10° 41'.2 S	142° 35'.1 E

**841 AUSTRALIA - QUEENSLAND - Great Sandy Strait - Moon Point Bank - Nav aids**

Maritime Safety Queensland Notice 526/2024

**Aus 817 [635/2024]**

Replace	light beacon with port lateral cylindrical light buoy, <i>Fl.R.2.5s</i> , with topmark	25° 14'.3 S	152° 57'.8 E
---------	--	-------------	--------------

**842 AUSTRALIA - QUEENSLAND - Karumba - Depths**

Former Notice - 759(T)/2023 is cancelled  
Ports North , Maritime Safety Queensland

**Aus 6 [1042/2023]**

Insert	<a href="#">accompanying block</a>	17° 26'.7 S	140° 45'.4 E
	<a href="#">accompanying ZOC diagram</a>	17° 29'.6 S	140° 41'.0 E

<b>843</b>	<b>AUSTRALIA - QUEENSLAND - Peninsula Range - Mount Westall - Lights; radio tower</b>		
UKHO			
<b>Aus 260</b> [697/2024]			
Replace	light, Aero Q.563m, with radio tower and legend, ( <i>W Lts</i> )	22° 21'.7 S	150° 34'.7 E
<b>Aus 367</b> [995/2023]			
Replace	light, Aero Q, with radio tower and legend, ( <i>W Lts</i> )	22° 21'.7 S	150° 34'.7 E
<b>Aus 822</b> [697/2024]			
Replace	light, Aero Q, with radio tower and legend, ( <i>W Lts</i> )	22° 21'.7 S	150° 34'.7 E
<b>844</b>	<b>AUSTRALIA - NORTHERN TERRITORY - Cobourg Peninsula - Allaru Island - Wreck northwards</b>		
Department of Defence			
<b>Aus 721</b> [NE 13/9/2024]			
Insert	safe clearance depth, 33m, enclosed by danger circle with legend, <i>Wk</i>	11° 05'.88 S	131° 52'.14 E
<b>845</b>	<b>AUSTRALIA - WESTERN AUSTRALIA - Ashburton - Port limit; depths</b>		
Pilbara Ports Authority			
<b>Aus 328</b> [776/2024]			
Insert	<a href="#">accompanying block</a>	21° 28'.0 S	114° 56'.0 E
<b>846</b>	<b>AUSTRALIA - WESTERN AUSTRALIA - Broome - Anchorages</b>		
Kimberley Ports Authority			
<b>Aus 50</b> [702/2024]			
Delete	anchorage, centred on	17° 56'.0 S	122° 09'.5 E
	anchorage, centred on	17° 56'.0 S	122° 10'.0 E
	anchorage, centred on	17° 56'.5 S	122° 09'.5 E
	anchorage, centred on	17° 56'.5 S	122° 10'.0 E
<b>847</b>	<b>AUSTRALIA - WESTERN AUSTRALIA - Broome - Depths southwestwards</b>		
EGS Survey Pty Ltd			
<b>Aus 324</b> [702/2024]			
Insert	depth, 8 <sub>7</sub> m, and extend contour NW to enclose	18° 07'.87 S	121° 50'.82 E
Delete	depth, 9 <sub>5</sub> m	18° 08'.2 S	121° 51'.1 E
<b>848</b>	<b>AUSTRALIA - WESTERN AUSTRALIA - Dirk Hartog Island - Cape Levillain - Scientific instrument</b>		
Department of Transport WA Notice 6216/2024			
<b>Aus 331</b> [1047/2023]			
Insert	special conical light buoy, <i>Fl.Y.2.5s</i> , without topmark	25° 28'.21 S	113° 06'.59 E
<b>849</b>	<b>AUSTRALIA - WESTERN AUSTRALIA - Geraldton - Scientific instrument</b>		
Department of Transport WA Notice 6222/2024			
<b>Aus 332</b> [812/2024]			
Insert	special spherical light buoy, <i>Fl(5)Y.20s</i> , without topmark	28° 36'.96 S	114° 32'.46 E

**850 AUSTRALIA - WESTERN AUSTRALIA - Montebello Islands - Depths northwestwards**

DSV Skandi Singapore

**Aus 4708 (INT 708) [809/2024]**

Replace depth, 1372m, with depth, 1514m 18° 01'.4 S 114° 28'.0 E

Delete depth, 2286m, and enclosing contour 18° 19'.5 S 114° 28'.0 E

**Aus 4723 (INT 723) [809/2024]**

Insert depth, 1514m 18° 03'.3 S 114° 25'.3 E

Delete depth, 1372m 18° 01'.4 S 114° 28'.0 E  
depth, 2286m, and enclosing contour 18° 19'.5 S 114° 28'.0 E**851 AUSTRALIA - WESTERN AUSTRALIA - Ningaloo Reef - Yalobia Passage - Scientific instrument**

Department of Transport WA Notice 6217/2024

**Aus 746 [816/2024]**Insert special conical light buoy, *Fl. Y. 2-5s*, without topmark 23° 09'.27 S 113° 44'.22 E**852 AUSTRALIA - WESTERN AUSTRALIA - Ningaloo Reef - Tantabiddi Passage - Scientific instrument**

Department of Transport WA Notice 6218/2024

**Aus 745 [401/2024]**Insert special conical light buoy, *Fl. Y. 2-5s*, without topmark 21° 53'.72 S 113° 55'.59 E**853 INDIAN OCEAN - Sumatera - Depths**

UKHO Notice 6/575/2024

**Aus 4071 (INT 71) [1004/2023]**Insert [accompanying block](#) 2° 30'.0 N 92° 30'.0 E**854 AUSTRALIA - SOUTH AUSTRALIA - Marino Rocks - Light**

Australian Maritime Safety Authority Final ATH 18/2024

**Aus 485 [438/2024]**

Amend light range to 19M 35° 03'.2 S 138° 30'.7 E

**Aus 781 [704/2024]**

Amend light range to 19M 35° 03'.2 S 138° 30'.7 E

**855 AUSTRALIA - SOUTH AUSTRALIA - Nuyts Archipelago - Evans Island - Light**

Australian Maritime Safety Authority Final ATH 17/2024

**Aus 120 [1036/2020]**

Amend light range to 15M 32° 22'.7 S 133° 28'.7 E

**Aus 341 [NE 24/5/2024]**

Amend light range to 15M 32° 22'.7 S 133° 28'.7 E

**856 AUSTRALIA - SOUTH AUSTRALIA - Thistle Island - Waterhouse Point - Light**

Australian Maritime Safety Authority Final ATH 21/2024

**Aus 343 [403/2024]**

Amend light range to 15M 35° 03'.7 S 136° 12'.0 E

**Aus 485 [854/2024]**

Amend light range to 15M 35° 03'.7 S 136° 12'.0 E

**Aus 776 [127/2023]**

Amend light range to 15M 35° 03'.7 S 136° 12'.0 E



**857\* AUSTRALIA - TASMANIA - Furneaux Group - Cat Island - Light**

Australian Maritime Safety Authority

**Aus 487 [706/2024]**

Amend light range to 16M

39° 57'.0 S

148° 21'.2 E

**Aus 800 [706/2024]**

Amend light range to 16M

39° 57'.0 S

148° 21'.2 E

**858 AUSTRALIA - TASMANIA - Norfolk Bay - Smooth Island - Light**

Marine and Safety Tasmania Notice M368/2024

**Aus 171 [738/2024]**

Delete light

42° 56'.4 S

147° 46'.9 E

**Aus 796 [777/2024]**

Delete light

42° 56'.4 S

147° 46'.9 E

**859(T)/2024 AUSTRALIA - NEW SOUTH WALES - Clarence Head - Live firing eastwards**

Department of Defence

During the period 11 to 22 November 2024, live firing will be conducted in an area bounded by the following positions:

30° 00'.00 S 153° 50'.00 E  
 30° 00'.00 S 153° 48'.00 E  
 29° 40'.14 S 155° 40'.13 E  
 28° 41'.02 S 154° 13'.91 E.

Mariners are advised to avoid the area by at least a 5M buffer and to navigate with caution in the area.

**Chart temporarily affected - Aus 812 - Aus 813 - Aus 4602 (INT 602)**

**860(T)/2024 AUSTRALIA - NEW SOUTH WALES - Jervis Bay - Military exercise completed**

Former Notice - 739(T)/2024 is cancelled  
 Transport for NSW Notice SO2453/2024

Cancel this notice on receipt.

**Chart formerly affected - Aus 807 - Aus 808**

**861(T)/2024 AUSTRALIA - NEW SOUTH WALES - Point Perpendicular - Fish aggregating device off station eastwards**

Department of Primary Industries and Regional Development

The special light buoy, *Fl.Y.5s FAD (Sep-Jun)* (31° 39'.59 S 152° 56'.23 E), is off station and in position 31° 40'.64 S 152° 55'.85 E.

**Chart temporarily affected - Aus 811**

**862(T)/2024 AUSTRALIA - QUEENSLAND - Brisbane River - Hamilton Reach - Light buoys; harbour works**

Former Notice - 818(T)/2024 is cancelled  
 Maritime Safety Queensland Notice 474(T)/2024, 530(T)/2024

Light buoys, which mark a construction zone, exist as follows:

<i>Position</i>	<i>Remarks</i>
27° 26'.51 S 153° 04'.01 E	<i>Fl.Y.2s</i>
27° 26'.47 S 153° 03'.73 E	<i>Fl.Y.3s.</i>

A port lateral light buoy, *Fl.R.2s*, exists in position 27° 26'.46 S 153° 03'.88 E. The light buoy marks the edge of the navigation channel to the north of the construction zone.

Mariners are advised to navigate with caution in the area.

**Chart temporarily affected - Aus 237**

**863(T)/2024 AUSTRALIA - QUEENSLAND - Gladstone - Picnic Island to Hamilton Point - Scientific instruments**

Maritime Safety Queensland Notice 529(T)/2024

Special light buoys, *Fl.Y.4.5s*, exist in positions 23° 47'.85 S 151° 13'.00 E and 23° 48'.42 S 151° 14'.47 E.

Mariners are advised to navigate with caution in the area.

**Chart temporarily affected - Aus 245**

**864(T)/2024 AUSTRALIA - QUEENSLAND - Townsville - Dredging operations; bed levelling operations completed**

Former Notice - 744(T)/2024 is cancelled  
 Maritime Safety Queensland

Cancel this notice on receipt.

**Chart formerly affected - Aus 256 - Aus 827**

**865(T)/2024 AUSTRALIA - QUEENSLAND - Townsville - Dredging operations; bed levelling operations**  
Maritime Safety Queensland Notice 532(T)/2024

The dredge *Brisbane* is conducting dredging operations in the Sea Channel, Platypus Channel and swing basins.

The vessel *Titan* will be conducting bed levelling operations in the Platypus Channel and Sea Channel.

Vessels will display appropriate lights and shapes and monitor VHF Ch 16.

Mariners are advised to navigate with caution in the area and keep well clear.

**Chart temporarily affected - Aus 256**

**866(T)/2024 AUSTRALIA - TORRES STRAIT - Cook Reef - Scientific instruments southwards**  
Fugro

Tide gauges exist in positions 10° 27'.06 S 141° 20'.32 E and 10° 28'.40 S 141° 41'.78 E.

Mariners are advised to navigate with caution in the area.

**Chart temporarily affected - Aus 700 - Aus 842**

**867(T)/2024 AUSTRALIA - TORRES STRAIT - Cook Reef - Scientific instruments recovered southwards**  
*Former Notice - 857(T)/2023 is cancelled*  
Fugro

Cancel this notice on receipt.

**Chart formerly affected - Aus 294 - Aus 296 - Aus 301 - Aus 700 - Aus 842**

**868(T)/2024 AUSTRALIA - NORTHERN TERRITORY - Darwin - Scientific instruments recovered**  
*Former Notice - 607(T)/2024 is cancelled*  
Northern Territory Government

Cancel this notice on receipt.

**Chart formerly affected - Aus 25 - Aus 26**

**869(T)/2024 AUSTRALIA - NORTHERN TERRITORY - Darwin - Bladin Point - Light beacon relit**  
*Former Notice - 823(T)/2024 is cancelled*  
Northern Territory Government

Cancel this notice on receipt.

**Chart formerly affected - Aus 26**

**870(T)/2024 AUSTRALIA - NORTHERN TERRITORY - Darwin to Shepparton Shoal - Pipe laying operations**

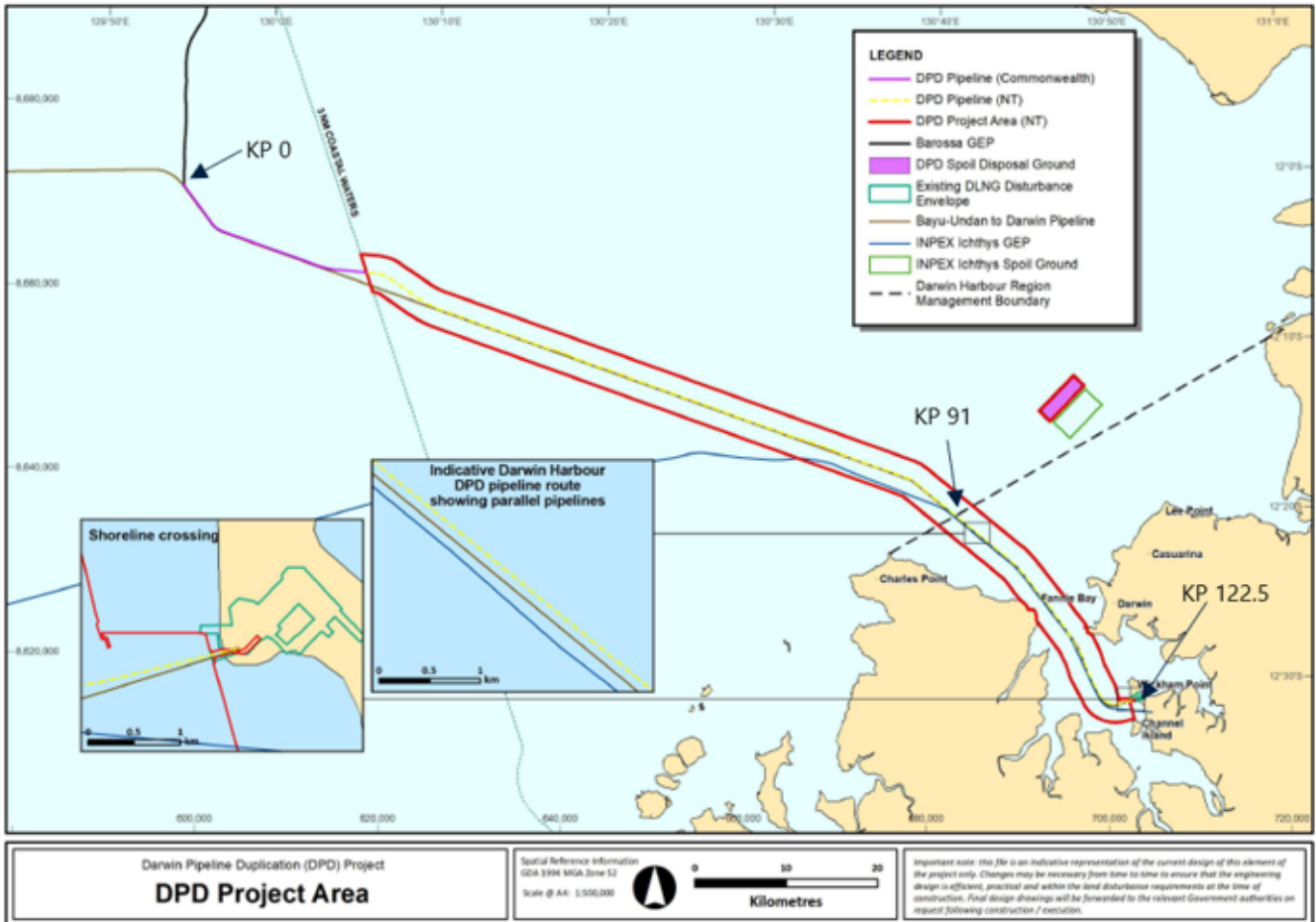
Former Notice - 750(T)/2024 is cancelled  
 Fugro , Santos

Various vessels are conducting works associated with the installation of a pipeline adjacent to the existing pipeline, between positions 12° 31'.54 S 130° 51'.69 E and 12° 01'.40 S 129° 54'.46 E.

Vessels will monitor VHF Ch 10 and 16.

Mariners are advised to navigate with caution in the area.

Note: For e-notice users, please see full edition for map.



**Chart temporarily affected - Aus 25 - Aus 26 - Aus 309 - Aus 316**

**871(T)/2024 AUSTRALIA - TIMOR SEA - Evans Shoal - Drill rig eastwards**

Former Notice - 411(T)/2024 is cancelled  
 MODU *Valaris MS-1*

Drill rig *Valaris MS-1* is conducting drilling operations in position 9° 52'.10 S 130° 15'.11 E.

**Chart temporarily affected - Aus 310**

**872(T)/2024 AUSTRALIA - WESTERN AUSTRALIA - Barrow Island - Subsea operations completed northwestwards**

Former Notice - 751(T)/2024 is cancelled  
 Australian Maritime Safety Authority Auscoast 332/2024

Cancel this notice on receipt.

**Chart formerly affected - Aus 328**

**873(T)/2024 AUSTRALIA - WESTERN AUSTRALIA - Barrow Island - Drill rig northwestwards moved**  
*Former Notice - 714(T)/2024 is cancelled*  
 MODU *Ocean Apex*

Cancel this notice on receipt.

**Chart formerly affected - Aus 328**

**874(T)/2024 AUSTRALIA - WESTERN AUSTRALIA - Bathurst Island - Tide gauges; buoys westwards**  
*Former Notice - 611(T)/2024 is cancelled*  
 MMA Offshore

Post hydrographic survey, subsurface tide gauges and buoys may exist in the vicinity of the following positions:

10° 58'.5 S 129° 00'.0 E  
 10° 58'.4 S 129° 11'.7 E  
 10° 57'.7 S 129° 23'.5 E  
 11° 10'.1 S 129° 00'.3 E  
 11° 08'.1 S 129° 12'.4 E  
 11° 06'.3 S 129° 31'.2 E  
 11° 21'.7 S 129° 03'.9 E  
 11° 18'.6 S 129° 15'.2 E  
 11° 15'.9 S 129° 24'.5 E  
 11° 11'.8 S 129° 44'.0 E  
 11° 24'.4 S 129° 35'.6 E  
 11° 23'.0 S 129° 47'.7 E  
 11° 35'.7 S 129° 42'.8 E  
 11° 33'.6 S 129° 52'.5 E.

Mariners are advised to navigate with caution in the area.

**Chart temporarily affected - Aus 309 - Aus 310 - Aus 311**

**875(T)/2024 AUSTRALIA - WESTERN AUSTRALIA - Broome - Obstruction removed westwards**  
*Former Notice - 824(T)/2024 is cancelled*  
 Kimberley Ports Authority

Cancel this notice on receipt.

**Chart formerly affected - Aus 50**

**876(T)/2024 AUSTRALIA - WESTERN AUSTRALIA - Dampier Archipelago - Roly Rock - Drill rig**  
 Australian Maritime Safety Authority Auscoast 332/2024

Drill rig *Q7000* is moored in position 20° 30'.11 S 116° 26'.00 E.

**Chart temporarily affected - Aus 57 - Aus 327 - Aus 742**

**877(T)/2024 AUSTRALIA - WESTERN AUSTRALIA - Geraldton - Batavia Coast Boat Harbour - Harbour works**  
 Department of Transport WA Notice 6221/2024

Works associated with the construction of new marina facilities are in progress in the vicinity of position 28° 46'.06 S 114° 36'.71 E.

The works area is marked by special light buoys, *Fl.Y.2-5s*.

All vessels involved in the works will display appropriate lights and shapes and will monitor VHF Ch 16.

Mariners are advised to navigate with caution in the area.

**Chart temporarily affected - Aus 81**

**878(T)/2024 AUSTRALIA - WESTERN AUSTRALIA - Glomar Shoal - Drill rig northwestwards**  
 MODU *Ocean Apex*

Drill rig *Ocean Apex* is conducting drilling operations in position 19° 15'55 S 116° 38'27 E.

**Chart temporarily affected - Aus 327**

**879(T)/2024 AUSTRALIA - WESTERN AUSTRALIA - Joseph Bonaparte Gulf - Geotechnical survey operations completed**

*Former Notice - 787(T)/2024* is cancelled  
 Acteon

Cancel this notice on receipt.

**Chart formerly affected - Aus 318**

**880(T)/2024 AUSTRALIA - WESTERN AUSTRALIA - Thevenard Island to Muiron Islands - Subsea operations northwestwards**

Technip FMC , Sapura Energy Australia

On or about 15 November 2024, vessel *Skandi Hercules* will be conducting subsea structure recovery operations in the Griffin Field (21° 13'.4 S 114° 38'.7 E), Enfield Field (21° 28'.9 S 113° 59'.3 E) and the Stybarrow Field (21° 24'.3 S 113° 51'.7 E).

Mariners are advised to navigate with caution in the area.

**Chart temporarily affected - Aus 328 - Aus 329 - Aus 744**

**881(T)/2024 AUSTRALIA - SOUTH AUSTRALIA - Fleurieu Peninsula - Haycock Point - Hulk chartered**

*Former Notice - 436(T)/2017* is cancelled  
 Department of Planning, Transport and Infrastructure SA

Cancel this notice on receipt.

**Chart formerly affected - Aus 485 - Aus 780**

**882(T)/2024 AUSTRALIA - SOUTH AUSTRALIA - Glenelg to Lincoln Canyon - Survey operations completed**

*Former Notice - 227(T)/2024* is cancelled  
 EGS Survey Pty Ltd

Cancel this notice on receipt.

**Chart formerly affected - Aus 343 - Aus 346 - Aus 485 - Aus 776 - Aus 780 - Aus 781**

**883(T)/2024 AUSTRALIA - SOUTH AUSTRALIA - Lucky Bay - Dredging operations completed**

*Former Notice - 723(T)/2023* is cancelled  
 Department for Infrastructure and Transport SA

Cancel this notice on receipt.

**Chart formerly affected - Aus 777**

**884(T)/2024 AUSTRALIA - SOUTH AUSTRALIA - Port Bonython - Light beacon unlit**

Department for Infrastructure and Transport SA Notice 68(T)/2024

The east cardinal light beacon, Q(3)10s (33° 02'.10 S 137° 44'.80 E), is unlit.

Mariners are advised to navigate with caution in the area.

**Chart temporarily affected - Aus 136 - Aus 778**

**885(T)/2024 AUSTRALIA - VICTORIA - Corner Inlet - Survey operations eastwards**

Ocius Technology

On or about 15 November 2024, an unmanned surface vehicle (USV) will be conducting survey operations in an area bounded by the following positions:

38° 58'.94 S 146° 43'.11 E

38° 52'.33 S 146° 56'.57 E

38° 46'.55 S 146° 51'.10 E

38° 52'.00 S 146° 37'.68 E.

Mariners are advised to navigate with caution in the area.

**Chart temporarily affected - Aus 181 - Aus 357 - Aus 487 - Aus 802**

**886(T)/2024 AUSTRALIA - VICTORIA - Ninety Mile Beach - Drill rig**MODU *Valaris 107*

Drill rig *Valaris 107* is conducting drilling operations in position 38° 34'.12 S 147° 19'.39 E.

**Chart temporarily affected - Aus 357 - Aus 487**

**887(T)/2024 AUSTRALIA - VICTORIA - Phillip Island - Research operations southwards complete***Former Notice - 832(T)/2023* is cancelled

Phillip Island Nature Parks

Cancel this notice on receipt.

**Chart formerly affected - Aus 143 - Aus 151 - Aus 349 - Aus 487 - Aus 801 - Aus 802**

**888(T)/2024 AUSTRALIA - VICTORIA - Port Campbell - Subsea operations completed southwards***Former Notice - 761(T)/2024* is cancelled

Beach Energy Limited

Cancel this notice on receipt.

**Chart formerly affected - Aus 349**

**889(T)/2024 AUSTRALIA - VICTORIA - Port Phillip - Mount Martha - Light buoy unlit**

Parks Victoria Notice 437(T)/2024

The special light buoy, *F(3)Y.10s R1* (38° 16'.47 S 144° 58'.36 E), is unlit.

Mariners are advised to navigate with caution in the area.

**Chart temporarily affected - Aus 143**

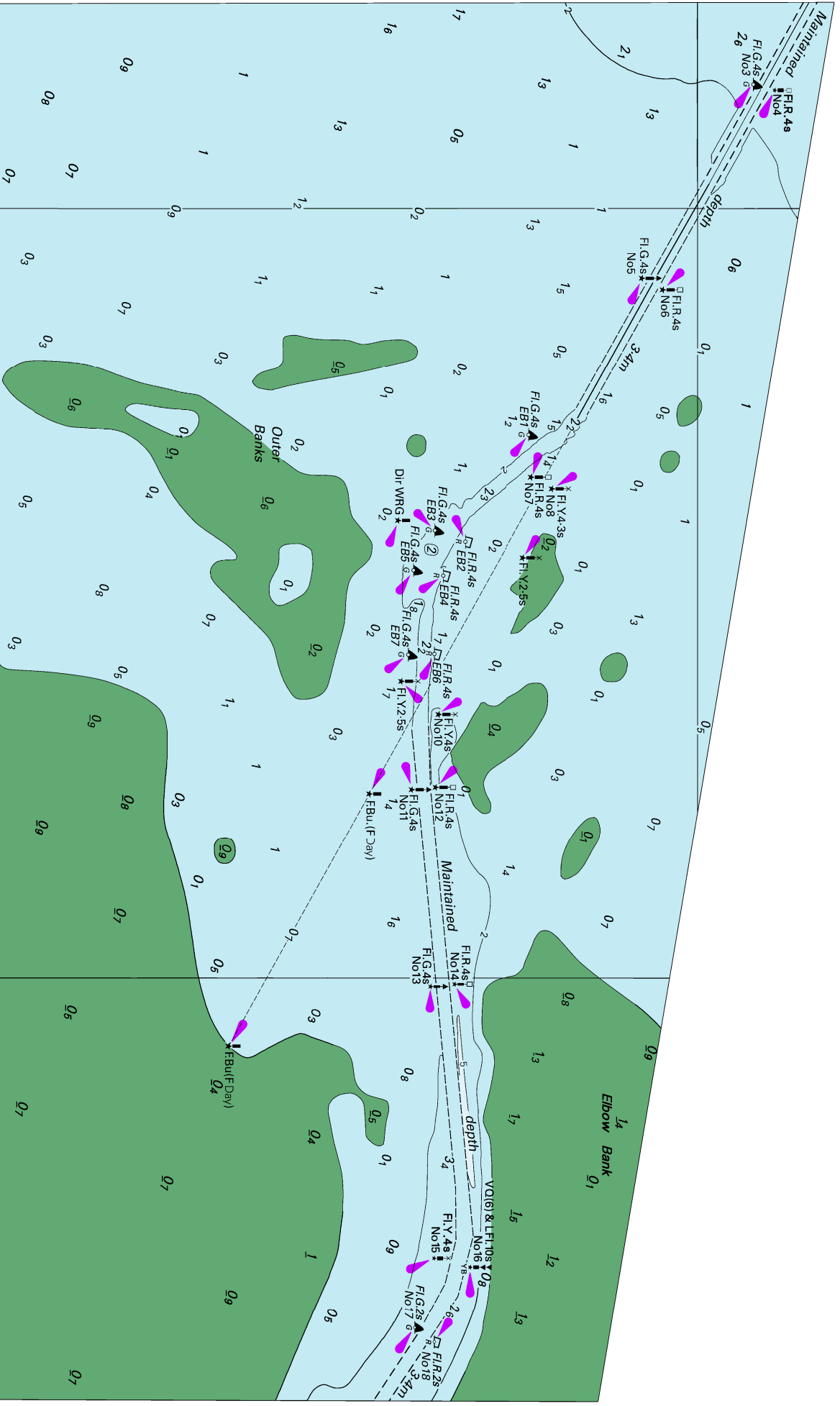
II

**HYDROGRAPHIC REPORTS**

NIL



To accompany Australian Notice to Mariners 842/2024

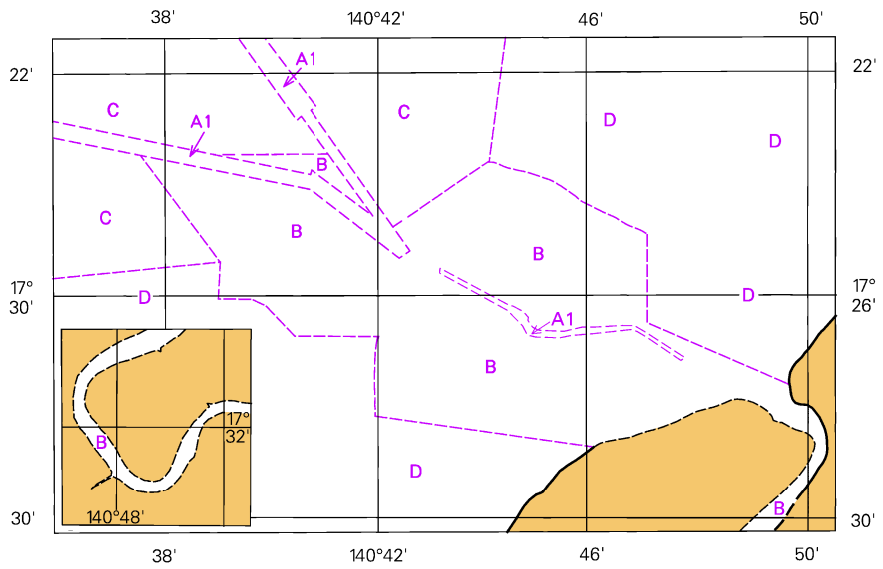


Block for chart Aus 6

© Commonwealth of Australia 2024

(257.0 x 153.5mm)

To accompany Australian Notice to Mariners 842/2024

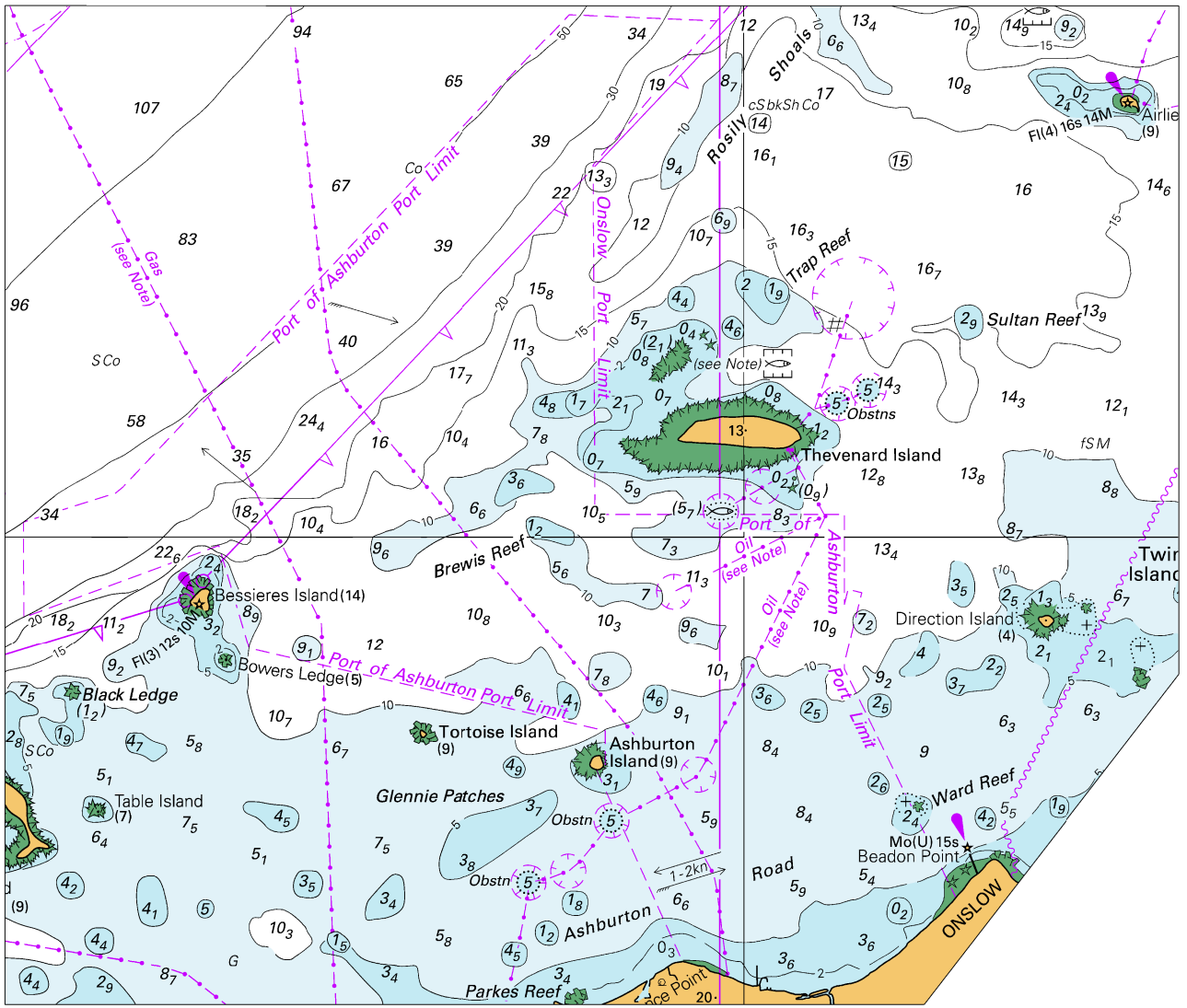


Block for chart Aus 6

© Commonwealth of Australia 2024

(103.0 x 65.5mm)

To accompany Australian Notice to Mariners 845/2024

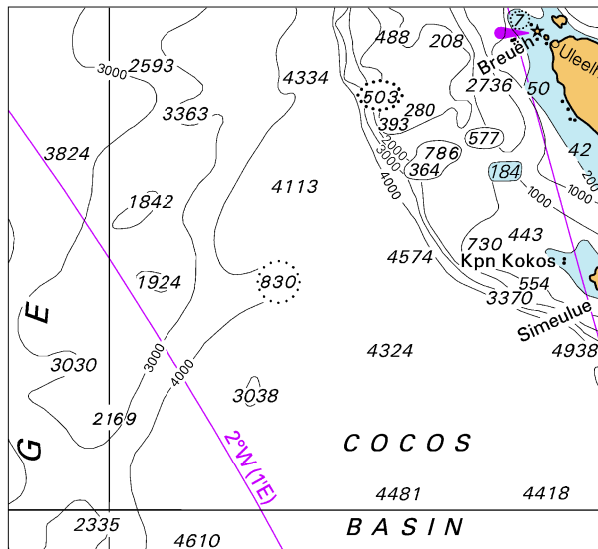


Block for chart Aus 328

© Commonwealth of Australia 2024

(168.6 x 132.8) x 143.5mm

To accompany Australian Notice to Mariners 853/2024



Block for chart Aus 4071

(79.0 x 71.9mm)

© Commonwealth of Australia 2024