



# AUSTRALIAN NOTICES TO MARINERS

## Notices 727 - 768

Published fortnightly by the Australian Hydrographic Office



Australian Notices to Mariners are the authority for correcting charts and publications published by the Australian Hydrographic Office covering Australia, Papua New Guinea, Solomon Islands, Australian Antarctic Territory and Timor-Leste.

Commodore R.L. PHILLIPS RAN  
*Hydrographer of Australia*

---

### SECTIONS.

- I. **Australian Notices to Mariners, including blocks and notes.**
- II. **Hydrographic Reports.**

### SUPPLEMENTS.

- I. **Tracings**
  - II. **Cumulative List of Australian Notices to Mariners.**
  - III. **Cumulative List of Temporary and Preliminary Australian Notices to Mariners.**
  - IV. **Temporary and Preliminary Notices in force.**
- 
- 

© Commonwealth of Australia 2024

This work is copyright. Apart from any use permitted under the Copyright Act 1968, no part may be reproduced by any process, adapted, communicated or commercially exploited without prior written permission from The Commonwealth represented by the Australian Hydrographic Office.

## IMPORTANT NOTICE

This edition of Notices to Mariners includes all significant information affecting AHO products which the AHO has become aware of since the last edition. All reasonable efforts have been made to ensure the accuracy and completeness of the information, including third party information, on which these updates are based. The AHO regards third parties from which it receives information as reliable, however the AHO cannot verify all such information and errors may therefore exist. The AHO does not accept liability for errors in third party information.

---

## GENERAL INSTRUCTIONS

The substance of these notices should be inserted on the charts affected.

Bearings are referred to the true compass and are reckoned clockwise from North; those relating to lights are given as seen by an observer from seaward.

Positions quoted in notices relate to WGS84 which is the horizontal datum for all charts produced by the Australian Hydrographic Office.

The range quoted for a light is its nominal range.

Depths are with reference to the chart datum of each chart. Heights are above mean high water springs or mean higher high water, as appropriate.

The capital letter (P) or (T) after the number of any notice denotes a preliminary or temporary notice respectively, which are contained separately at the end of the permanent notices.

---

## REPORTING OF DANGERS

Mariners are particularly requested to notify the AUSTRALIAN HYDROGRAPHIC OFFICE, Locked Bag 8801 Wollongong, NSW 2500 (e-mail [datacentre@hydro.gov.au](mailto:datacentre@hydro.gov.au) or, alternatively by filling in and submitting the [Hydrographic Notes](#) forms located on the web site – [www.hydro.gov.au](http://www.hydro.gov.au)), immediately on the discovery of new dangers or suspected dangers to navigation. For changes or defects in aids to navigation notify AusSAR (Fax 02-6230 6868 or email [rccaus@amsa.gov.au](mailto:rccaus@amsa.gov.au)).

---

## AUTHORISED USE

Copies of Australian notices are available free of charge from the Australian Hydrographic Office (AHO) website ([www.hydro.gov.au](http://www.hydro.gov.au)) and through the eNotices (email) service ([www.hydro.gov.au/enotices/enotices.htm](http://www.hydro.gov.au/enotices/enotices.htm)).

Individual Notices may be copied for the purpose of inserting Notice substance on official charts and publications. Paper copies may be printed by chart agents and distributed to customers on a cost recovery basis. Participating chart agents are listed on the AHO website as providing a 'Paper Notices to Mariners' service ([www.hydro.gov.au/prodserv/agents-list.htm](http://www.hydro.gov.au/prodserv/agents-list.htm)). Copies of the notices may not be sold for profit without prior written agreement.

## NUMERICAL INDEX OF NOTICES TO MARINERS

### Edition No 20

Notices	Aus Chart, INT Chart, ENC Cell, AHP, BA Pubs
727	Aus 262, 720, 721, SLB 107
728	Aus 198
729	Summer time
730	AusTides 2025
731	Aus 812
732	Aus 830
733	Aus 309
734	Aus 323, 733, 4722, INT 722
735	Aus 116, 755
736	Aus 116, 337
737	Aus 155
738	Aus 171
739(T)	Aus 807, 808
740(T)	Aus 200
741(T)	Aus 4601, INT 601
742(T)	Aus 237
743(T)	Aus 262
744(T)	Aus 256, 827
745(T)	Aus 545, 554, PNG 679, 680
746(P)	PNG 545, 554, 680
747(T)	Aus 20
748(T)	Aus 25, 26
749(T)	Aus 25, 26, 309, 316
750(T)	Aus 25, 26, 309, 316
751(T)	Aus 328
752(T)	Aus 744, 745
753(T)	Aus 327
754(T)	Aus 328, 329
755(T)	Aus 335, 755
756(T)	Aus 53, 326
757(T)	Aus 130, 485, 781
758(T)	Aus 130, 485, 781
759(T)	Aus 143
760(T)	Aus 143
761(T)	Aus 349
762(T)	Aus 155
763(T)	Aus 143, 155
764(T)	Aus 143, 155
765(T)	Aus 143, 155
766(T)	Aus 171, 767, 796, 797
767(T)	Aus 487, 800
768(P)	SLB 102, 302

## NUMERICAL INDEX OF CHARTS AFFECTED

### Edition No 20

Aus Chart	Notices	INT Chart	Notices
Aus 20	747(T)	INT 601	741(T)
Aus 25	748(T), 749(T), 750(T)	INT 722	734
Aus 26	748(T), 749(T), 750(T)		
Aus 53	756(T)		
Aus 116	735, 736		
Aus 130	757(T), 758(T)		
Aus 143	759(T), 760(T), 763(T), 764(T), 765(T)		
Aus 155	737, 762(T), 763(T), 764(T), 765(T)		
Aus 171	738, 766(T)		
Aus 198	728		
Aus 200	740(T)		
Aus 237	742(T)		
Aus 256	744(T)		
Aus 262	727, 743(T)		
Aus 309	733, 749(T), 750(T)		
Aus 316	749(T), 750(T)		
Aus 323	734		
Aus 326	756(T)		
Aus 327	753(T)		
Aus 328	751(T), 754(T)		
Aus 329	754(T)		
Aus 335	755(T)		
Aus 337	736		
Aus 349	761(T)		
Aus 485	757(T), 758(T)		
Aus 487	767(T)		
Aus 545	745(T)		
Aus 554	745(T)		
Aus 720	727		
Aus 721	727		
Aus 733	734		
Aus 744	752(T)		
Aus 745	752(T)		
Aus 755	735, 755(T)		
Aus 767	766(T)		
Aus 781	757(T), 758(T)		
Aus 796	766(T)		
Aus 797	766(T)		
Aus 800	767(T)		
Aus 807	739(T)		
Aus 808	739(T)		
Aus 812	731		
Aus 827	744(T)		
Aus 830	732		
Aus 4601	741(T)		
Aus 4722	734		
PNG 545	746(P)		
PNG 554	746(P)		
PNG 679	745(T)		
PNG 680	745(T), 746(P)		
SLB 102	768(P)		
SLB 107	727		
SLB 302	768(P)		

**727 AUSTRALIA - Products - New Charts, New Editions, Withdrawn Charts**

Australian Hydrographic Office

**New Charts**

<i>Chart</i>	<i>Title and Geographical limits</i>	<i>Scale</i>	<i>Publication Date</i>	<i>Remarks</i>
NIL				

**New Electronic Navigation Chart (Aus ENC)**

<i>Cell Name</i>	<i>Title</i>	<i>Publication Date</i>	<i>Remarks</i>
AU5LGQ01	Australia - Queensland - Laguna Quays	26 September 2024	AU5252P1 is withdrawn.

**New Editions and Withdrawn Charts**

<i>Chart</i>	<i>Title</i>	<i>Scale</i>	<i>Publication Date</i>	<i>Remarks</i>
Aus 262 <b>(Edition 5)</b>	Australia - East Coast - Queensland - Approaches to Cairns Inset: Trinity Inlet	1:25 000  1:20 000	27 September 2024	New edition with general updating throughout; including new bathymetric data.  <b>Chart Aus 262 Edition 4 dated 5 February 2021 is now superseded and must be withdrawn from use.</b>
Aus 720 <b>(Edition 4)</b>	Australia - North Coast - Northern Territory - Van Diemen Gulf	1:150 000	13 September 2024	New edition with general updating throughout; including new bathymetric data.  <b>Chart Aus 720 Edition 3 dated 18 August 2023 is now superseded and must be withdrawn from use.</b>
Aus 721 <b>(Edition 5)</b>	Australia - North Coast - Northern Territory - Port Essington to Snake Bay	1:150 000	13 September 2024	New edition with general updating throughout; including new bathymetric data.  <b>Chart Aus 721 Edition 4 dated 25 November 2022 is now superseded and must be withdrawn from use.</b>
SLB 107 <b>(Edition 2)</b>	South Pacific Ocean - Solomon Islands - Plans of the Santa Cruz and adjacent islands Plans: Santa Cruz Islands Utupua - Basilisk Harbour Vanikolo - Pallu Passage Ndendo - Graciosa Bay Vanikolo - Manieve and Tevai Bays Tikopia Island Anuta Island	  1:500 000 1:50 000 1:50 000 1:50 000 1:50 000 1:25 000	27 September 2024	New edition with general updating throughout; including new bathymetric data.  <b>Chart SLB 107 Edition 1 dated 11 August 2017 is now superseded and must be withdrawn from use.</b>

**Chart permanently withdrawn**

Charts listed above as withdrawn no longer meet chart carriage requirements and should be marked as "superseded" and replaced with the new chart/ new edition listed prior to passage through the area covered by the new chart.

When placing orders with a chart agent between notice of forthcoming edition and its publication, mariners should advise whether their order pertains to the current edition or the new edition.

For further details refer to the AHO website at [www.hydro.gov.au](http://www.hydro.gov.au) for new edition and new chart stock arrival information.

**728 AUSTRALIA - Products - New Charts and New Editions to be published shortly**

Australian Hydrographic Office

**New Charts to be published shortly**

Chart	Title	Scale	Remarks
NIL			

**New Editions to be published shortly**

Chart	Title	Scale	Remarks
Aus 198	Australia - East Coast - New South Wales - Botany Bay and Port Hacking	1:25 000	New edition with general updating throughout; including updates to the shipping fairway and nav aids.

**729 AUSTRALIA - Summer time**

Australian Government

Clocks will be wound forward one hour at 0200 local time on 6 OCT 2024 in the Australian Capital Territory, New South Wales, South Australia, Victoria and Tasmania.

No changes will be made in Queensland, Northern Territory and Western Australia.

**730 AUSTRALIA - AusTides 2025**

Australian Hydrographic Office

2025 tide predictions for AusTides have been released.

AusTides version 2.0.2 remains up to date. The app should automatically retrieve the data for 2025, when connected to the internet. 2024 data can still be viewed, by using the year toggle in the upper, right corner of the home screen. Look for the button with a calendar icon.

For those running AusTides on a computer without internet access, the data will need to be loaded manually. To do this, please use another device to visit the following website:

<https://www.hydro.gov.au/prodserv/publications/ausTides/tides-patches.htm>

Download the DATA2025.00.zip folder, but do not unzip it. Load the ZIP folder onto a USB drive. Then, launch AusTides and select "open data folder" from the drop-down menu. Place the ZIP folder in this location, without unzipping it, and restart AusTides.

**731 AUSTRALIA - NEW SOUTH WALES - One Tree Point - Light**

Transport for NSW

**Aus 812 [663/2024]**

Amend	light to <i>Fl.Bu.3s 3M &amp; Iso.Bu.2s 3M</i>	29° 46'.3 S	153° 17'.8 E
-------	--	-------------	--------------

**732 AUSTRALIA - QUEENSLAND - Cairns - Depths; radio tower**

UKHO , Department of Defence

**Aus 830 [638/2024]**

Insert	<a href="#">accompanying block</a>	16° 50'.0 S	145° 51'.0 E
--------	------------------------------------	-------------	--------------

**733 AUSTRALIA - TIMOR SEA - Darwin to Penguin Shoal - ZOC diagram**

Australian Hydrographic Office

**Aus 309 [701/2024]**

Delete	magenta dashed line, between	11° 35'.5 S	131° 00'.2 E
		11° 36'.1 S	130° 59'.7 E
		11° 36'.2 S	130° 59'.9 E
		11° 35'.9 S	131° 00'.2 E
	magenta arrow, centred on	11° 35'.7 S	130° 59'.6 E

**734 AUSTRALIA - WESTERN AUSTRALIA - Cape Leveque - Light**  
Australian Maritime Safety Authority Final ATH 13/2024

<b>Aus 323</b> [NE 19/1/2024]			
Amend	light range to 19M	16° 23'.8 S	122° 55'.7 E
<b>Aus 733</b> [1316/2019]			
Amend	light range to 19M	16° 23'.8 S	122° 55'.7 E
<b>Aus 4722 (INT 722)</b> [703/2024]			
Amend	light range to 19M	16° 23'.8 S	122° 55'.7 E

**735 AUSTRALIA - WESTERN AUSTRALIA - Geographe Bay to Flinders Bay - Nav aids; depths; nomenclature**  
Department of Biodiversity, Conservation and Attractions WA

<b>Aus 116 (Flinders Bay)</b> [434/2024]			
Amend	light buoy to Fl. Y.3s	34° 19'.3 S	115° 12'.4 E
	light buoy to Fl. Y.3s	34° 19'.9 S	115° 12'.4 E
	light buoy to Fl. Y.3s	34° 19'.9 S	115° 14'.0 E
	light buoy to Fl. Y.3s	34° 20'.4 S	115° 12'.4 E
	light buoy to Fl. Y.3s	34° 20'.4 S	115° 13'.2 E
	light buoy to Fl. Y.3s	34° 20'.4 S	115° 14'.0 E
Delete	light buoy	34° 18'.8 S	115° 14'.0 E
	light buoy	34° 18'.8 S	115° 13'.5 E
	light buoy	34° 19'.3 S	115° 14'.0 E
<b>Aus 755</b> [433/2024]			
Insert	<a href="#">accompanying block A</a>	33° 34'.0 S	115° 05'.0 E
	<a href="#">accompanying block B</a>	33° 34'.0 S	115° 21'.0 E

**736 AUSTRALIA - WESTERN AUSTRALIA - Hopetoun - Lights; navline**  
Department of Transport WA

<b>Aus 116 (Mary Ann Haven)</b> [735/2024]			
Insert	light, F.Bu 12m 5M, with orange triangular topmark apex down	33° 57'.050 S	120° 07'.209 E
	a dashed line in a direction 055.5° for a distance of 1120m, thence a continuous line for 2310m, with legend 304.5°, emanating from light	33° 57'.050 S	120° 07'.209 E
Amend	light to F.Bu 6m 5M	33° 57'.09 S	120° 07'.28 E
Delete	dashed and continuous line with legend, 308°, between	33° 56'.71 S	120° 06'.69 E
		33° 58'.30 S	120° 09'.13 E
<b>Aus 337</b> [275/2024]			
Amend	light to F.Bu 12m 5M	33° 57'.1 S	120° 07'.3 E
Delete	light	33° 56'.6 S	120° 06'.5 E

**737 AUSTRALIA - VICTORIA - Port Phillip - Sandringham - Beacon; infrastructure**  
Parks Victoria

<b>Aus 155</b> [646/2024]			
Insert	<a href="#">accompanying block</a>	37° 56'.3 S	144° 59'.4 E

**738 AUSTRALIA - TASMANIA - Blackman Bay - Buoy**  
Marine and Safety Tasmania Notice M331/2024

<b>Aus 171</b> [555/2024]			
Replace	beacon with starboard lateral spar buoy without topmark	42° 52'.1 S	147° 51'.8 E

**739(T)/2024 AUSTRALIA - NEW SOUTH WALES - Jervis Bay - Military exercise**

Transport for NSW Notice SO2453/2024

Military exercises will be conducted on the waters of Jervis Bay and in the adjacent waters of the Tasman Sea from 30 September to 25 October 2024.

An exclusion zone exists around all vessels involved in the exercises and exclusion zones will be indicated by the presence of patrol and naval vessels on the perimeters.

Vessels involved in the exercises will monitor VHF Ch 16 and Ch 19. Contact can also be made to the Battle Watch Captain on 0461 312 504.

Mariners area advised to navigate with caution in the area.

**Chart temporarily affected - Aus 807 - Aus 808****740(T)/2024 AUSTRALIA - NEW SOUTH WALES - Port Jackson - Garden Island - Dredging operations**

Port Authority of New South Wales Notice 21/2024

The dredge *Sydney*, barge *Pelican* and support vessel *Arana* are conducting dredging operations in areas bounded by the coast and the following positions:

33° 51'.94 S 151° 13'.30 E

33° 51'.65 S 151° 13'.47 E

33° 51'.47 S 151° 13'.40 E

33° 51'.45 S 151° 13'.72 E

33° 51'.47 S 151° 13'.70 E

and;

33° 51'.58 S 151° 13'.81 E

33° 51'.61 S 151° 13'.84 E

33° 51'.66 S 151° 13'.79 E

33° 51'.63 S 151° 13'.77 E.

Mariners are advised to navigate with caution in the area.

**Chart temporarily affected - Aus 200****741(T)/2024 AUSTRALIA - TASMAN SEA - Tasman Basin - Light buoy off station**

Australian Bureau of Meteorology

The special light buoy, *Fl. Y.2s* (44° 47'.40 S 161° 42'.03 E), is off station.

**Chart temporarily affected - Aus 4601 (INT 601)****742(T)/2024 AUSTRALIA - QUEENSLAND - Brisbane River - Hamilton Reach - Light buoys; harbour works**

Maritime Safety Queensland Notice 474(T)/2024

Special light buoys, which mark a construction zone, exist as follows:

<i>Position</i>	<i>Remarks</i>
27° 26'.51 S 153° 04'.01 E	<i>Fl. Y.2s</i>
27° 26'.47 S 153° 03'.73 E	<i>Fl. Y.3s.</i>

Mariners are advised to navigate with caution in the area.

**Chart temporarily affected - Aus 237****743(T)/2024 AUSTRALIA - QUEENSLAND - Cairns - Trinity Inlet - Wreck**

Maritime Safety Queensland Notice 467(T)/2024

A stranded wreck marked by a special light buoy, *Fl. Y.2·5s*, exists in position 16° 56'.90 S 145° 47'.19 E.

Mariners are advised to navigate with caution in the area.

**Chart temporarily affected - Aus 262**



**744(T)/2024 AUSTRALIA - QUEENSLAND - Townsville - Dredging operations; bed levelling operations**  
Maritime Safety Queensland Notice 470(T)/2022

The dredge *Brisbane* is conducting dredging operations in the Sea Channel, Platypus Channel and swing basins.

The vessel *Titan* will be conducting bed levelling operations in the Platypus Channel and Sea Channel.

Vessels will display appropriate lights and shapes and monitor VHF Ch 16.

Mariners are advised to navigate with caution in the area and keep well clear.

**Chart temporarily affected - Aus 256 - Aus 827**

**745(T)/2024 PAPUA NEW GUINEA - Duke of York Island - Shoaling charted**  
*Former Notice* - 968(P)/2019 is cancelled  
LADS Flight

Cancel this notice on receipt.

**Chart formerly affected - Aus 545 - Aus 554 - PNG 679 - PNG 680**

**746(P)/2024 PAPUA NEW GUINEA - Rabaul - Coastline**  
Australian Hydrographic Office

The coastline between Karavia Bay (4° 16'.84 S 152° 09'.83 E) and Nodup (4° 11'.66 S 152° 12'.32 E) may differ to what is currently charted.

Mariners are advised to navigate with caution in the area.

Charts will updated in due course.

**Chart which will be affected - PNG 545 - PNG 554 - PNG 680**

**747(T)/2024 AUSTRALIA - NORTHERN TERRITORY - Clarence Strait - Adam Bay - Obstructions; wrecks charted**  
*Former Notice* - 765(T)/2023 is cancelled  
EGS Survey Pty Ltd , Australian Hydrographic Office

Cancel this notice on receipt.

**Chart formerly affected - Aus 20**

**748(T)/2024 AUSTRALIA - NORTHERN TERRITORY - Darwin - Cable laying operations; diving operations completed**  
*Former Notice* - 564(T)/2024 is cancelled  
Northern Territory Government

Cancel this notice on receipt.

**Chart formerly affected - Aus 25 - Aus 26**

**749(T)/2024 AUSTRALIA - NORTHERN TERRITORY - Darwin - Military exercise completed**  
*Former Notice* - 679(T)/2024 is cancelled  
Department of Defence , Department of Infrastructure, Planning and Logistics NT

Cancel this notice on receipt.

**Chart formerly affected - Aus 25 - Aus 26 - Aus 309 - Aus 316**

**750(T)/2024 AUSTRALIA - NORTHERN TERRITORY - Darwin to Shepparton Shoal - Survey operations; subsea operations**

Fugro

Vessel *Fugro Kwilena*, support vessel *Total Response* and an ROV are conducting survey and construction operations adjacent to the existing pipeline between positions 12° 31'.54 S 130° 51'.69 E and 12° 01'.40 S 129° 54'.46 E.

Vessels will monitor VHF Ch 10 and 16.

Mariners are advised to navigate with caution in the area.

Note: For e-notice users, please see full edition for map.

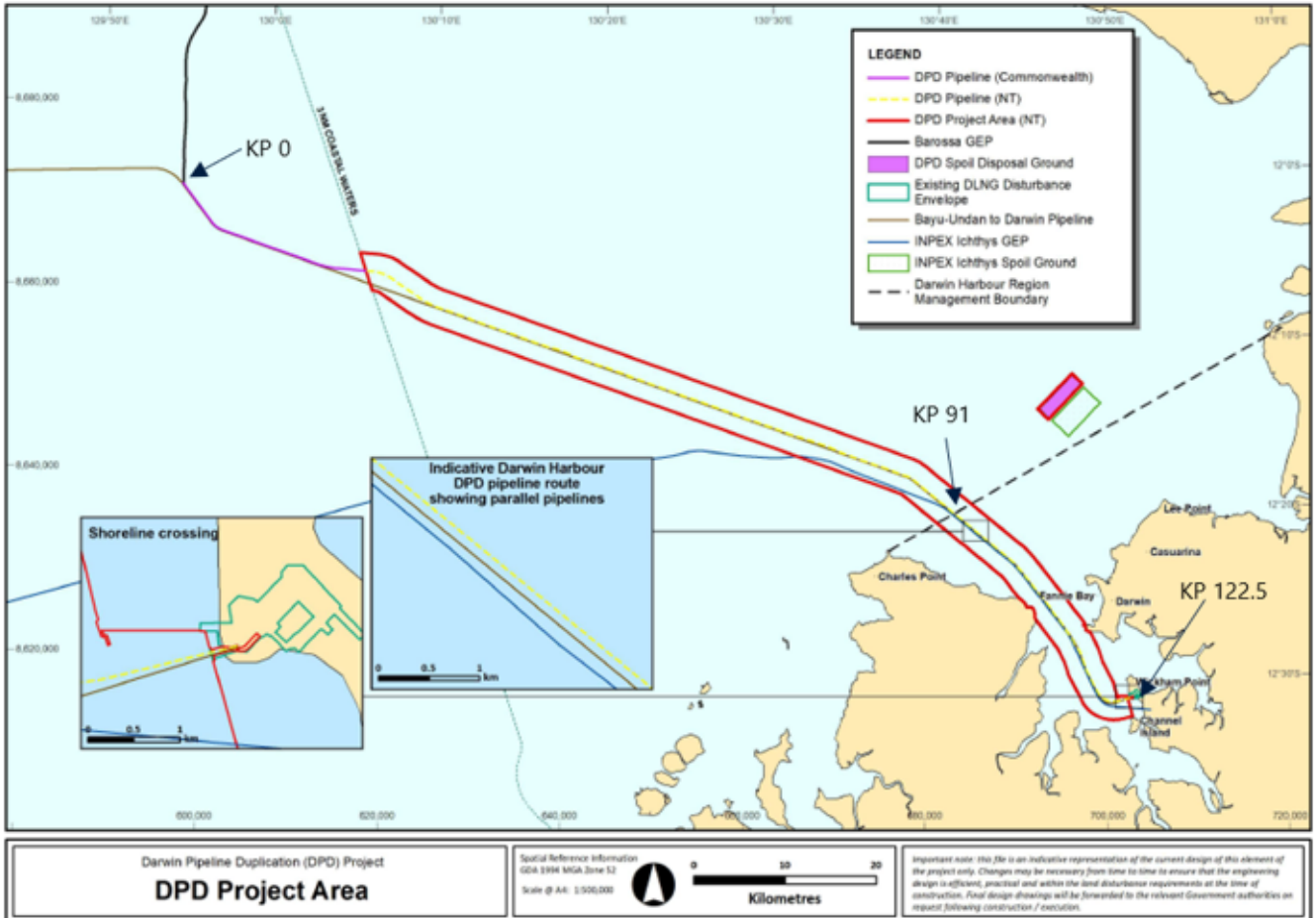


Chart temporarily affected - Aus 25 - Aus 26 - Aus 309 - Aus 316

**751(T)/2024 AUSTRALIA - WESTERN AUSTRALIA - Barrow Island - Subsea operations northwestwards**  
Helix Energy Solutions

Vessel *Helix Q7000* is conducting subsea operations in the vicinity of position 19° 51'.17 S 114° 30'.91 E and 20° 24'.46 S 114° 50'.95 E.

Mariners are advised to navigate with caution in the area.

Chart temporarily affected - Aus 328

**752(T)/2024 AUSTRALIA - WESTERN AUSTRALIA - Exmouth - Scientific instrument recovered**

Former Notice - 536(T)/2024 is cancelled  
Department of Transport WA

Cancel this notice on receipt.

**Chart formerly affected - Aus 744 - Aus 745**

**753(T)/2024 AUSTRALIA - WESTERN AUSTRALIA - Glomar Shoal - Well plug and abandonment works northwards**

Former Notice - 373(T)/2024 is cancelled  
Santos

Cancel this notice on receipt.

**Chart formerly affected - Aus 327**

**754(T)/2024 AUSTRALIA - WESTERN AUSTRALIA - Muiron Islands - Drill rig northwestwards**

Former Notice - 618(T)/2024 is cancelled  
Australian Maritime Safety Authority Auscoast Warning 280/2024

Drill rig *Transocean Endurance* is conducting drilling operations in position 21° 29'.70 S 113° 49'.74 E.

**Chart temporarily affected - Aus 328 - Aus 329**

**755(T)/2024 AUSTRALIA - WESTERN AUSTRALIA - Naturaliste Reefs - Depth eastward disproved**

Former Notice - 619(P)/2024 is cancelled  
Garmin

Cancel this notice on receipt.

**Chart formerly affected - Aus 335 - Aus 755**

**756(T)/2024 AUSTRALIA - WESTERN AUSTRALIA - Port Hedland - Scientific instruments recovered**

Former Notice - 303(T)/2024 is cancelled  
Pilbara Ports Authority Notice PH16/2024

Cancel this notice on receipt.

**Chart formerly affected - Aus 53 - Aus 326**

**757(T)/2024 AUSTRALIA - SOUTH AUSTRALIA - Gulf St Vincent - Port Gawler - Scientific instrument**

Department for Infrastructure and Transport SA Notice 55(T)/2024

A subsurface scientific instrument exists in position 34° 42'.67 S 138° 22'.58 E.

Mariners are advised to navigate with caution in the area.

**Chart temporarily affected - Aus 130 - Aus 485 - Aus 781**

**758(T)/2024 AUSTRALIA - SOUTH AUSTRALIA - Gulf St Vincent - Largs Bay to Glenelg - Scientific instruments**

Department for Infrastructure and Transport SA Notice 52(T)/2024

Light buoys, *Fl. Y. 2-5s*, exist in the following positions:

34° 47'.98 S 138° 28'.78 E  
34° 51'.30 S 138° 21'.02 E  
34° 57'.28 S 138° 29'.30 E.

Mariners are advised to navigate with caution in the area.

**Chart temporarily affected - Aus 130 - Aus 485 - Aus 781**

**759(T)/2024 AUSTRALIA - VICTORIA - Barwon Head - Light buoy restored eastwards**

Former Notice - 493(T)/2021 is cancelled  
Parks Victoria Notice 378/2024

Cancel this notice on receipt.

**Chart formerly affected - Aus 143****760(T)/2024 AUSTRALIA - VICTORIA - Barwon Head - Light buoy off station**

Safe Transport Victoria Notice 386(T)/2024

The south cardinal light buoy, Q(6)+LFl.15s (38° 17'.29 S 144° 30'.57 E), is off station.

Mariners are advised to navigate with caution in the area.

**Chart temporarily affected - Aus 143****761(T)/2024 AUSTRALIA - VICTORIA - Port Campbell - Subsea operations southwards**

Beach Energy Limited

Vessel *Seven Pegasus* and an ROV are conducting subsea operations in an area bounded by the following positions:

39° 17'.00 S 142° 48'.00 E  
39° 17'.00 S 142° 57'.00 E  
39° 11'.00 S 142° 57'.00 E  
39° 11'.00 S 142° 48'.00 E.

Mariners are advised to navigate with caution in the area.

**Chart temporarily affected - Aus 349****762(T)/2024 AUSTRALIA - VICTORIA - Port Phillip - Mordialloc - Buoy off station**

Parks Victoria Notice 400(T)/2024

The special buoy (38° 00'.26 S 145° 04'.60 E) is off station.

Mariners are advised to navigate with caution in the area.

**Chart temporarily affected - Aus 155****763(T)/2024 AUSTRALIA - VICTORIA - Port Phillip - Sandringham - Light beacon unlit**

Parks Victoria Notice 121(T)/2019, 285(T)/2019, 368(T)/2024

The starboard lateral light beacon, Fl(2)G.5s 5m 4M (37° 56'.48 S 144° 59'.56 E), is unlit; a starboard lateral buoy exists in position 37° 56'.51 S 144° 59'.53 E.

**Chart temporarily affected - Aus 143 - Aus 155****764(T)/2024 AUSTRALIA - VICTORIA - Port Phillip - Altona Reef - Light buoy off station southeastwards**

Parks Victoria Notice 380(T)/2024

The special light buoy, Fl.Y.4s P3 (37° 53'.39 S 144° 52'.85 E), is off station.

Mariners are advised to navigate with caution in the area.

**Chart temporarily affected - Aus 143 - Aus 155****765(T)/2024 AUSTRALIA - VICTORIA - Port Phillip - Sandringham - Light beacon unlit**

Former Notice - 1292(T)/2019 is cancelled  
Parks Victoria Notice 121(T)/2019, 285(T)/2019, 368(T)/2024

Cancel this notice on receipt.

**Chart formerly affected - Aus 143 - Aus 155**

**766(T)/2024 AUSTRALIA - TASMANIA - Betsey Island to Saint Helens Point - Scientific instruments off station**  
 Marine and Safety Tasmania Notice M320(T)/2024

The light buoys, *Fl.Y.3s FAD*, in the followings positions are off station:  
 41° 14'.48 S 148° 24'.57 E  
 42° 50'.67 S 147° 56'.03 E  
 43° 04'.56 S 147° 28'.65 E.

**Chart temporarily affected - Aus 171 - Aus 767 - Aus 796 - Aus 797**

**767(T)/2024 AUSTRALIA - TASMANIA - Furneaux Group - Flinders Island - Survey operations**  
 Ocean Infinity Pty Ltd

On or about 1 October 2024, vessels *Seven Oceans* and *Nostramo* will be conducting survey operations in an area bounded by the following positions:  
 40° 15'.38 S 147° 22'.19 E  
 40° 05'.86 S 147° 43'.03 E  
 40° 00'.02 S 147° 51'.14 E  
 39° 51'.96 S 147° 48'.33 E  
 39° 44'.45 S 147° 53'.94 E  
 39° 36'.91 S 147° 44'.19 E  
 39° 55'.91 S 147° 23'.60 E.

Subsurface scientific instruments exist on the seabed in the following positions:  
 39° 44'.8 S 147° 52'.7 E  
 39° 54'.0 S 147° 45'.9 E  
 40° 04'.0 S 147° 44'.3 E  
 40° 10'.2 S 147° 34'.4 E  
 40° 15'.9 S 147° 21'.9 E  
 40° 06'.3 S 147° 22'.2 E  
 39° 55'.7 S 147° 23'.0 E  
 39° 45'.8 S 147° 34'.7 E  
 39° 36'.4 S 147° 44'.2 E  
 40° 00'.4 S 147° 35'.1 E.

Special light buoys may exist in the vicinity of the above positions.

Mariners are advised to navigate with caution in the area.

**Chart temporarily affected - Aus 487 - Aus 800**

**768(P)/2024 SOLOMON ISLANDS - Diamond Narrows to Munda Bar - Shoaling**  
 Aero Asahi Corporation

Latest survey indicates shoaler depths than those charted may exist between Diamond Narrows (8° 15'.62 S 157° 11'.69 E) and Munda Bar (8° 20'.94 S 157° 12'.72 E).

Mariners are advised to navigate with caution in the area.

Charts will be updated in due course.

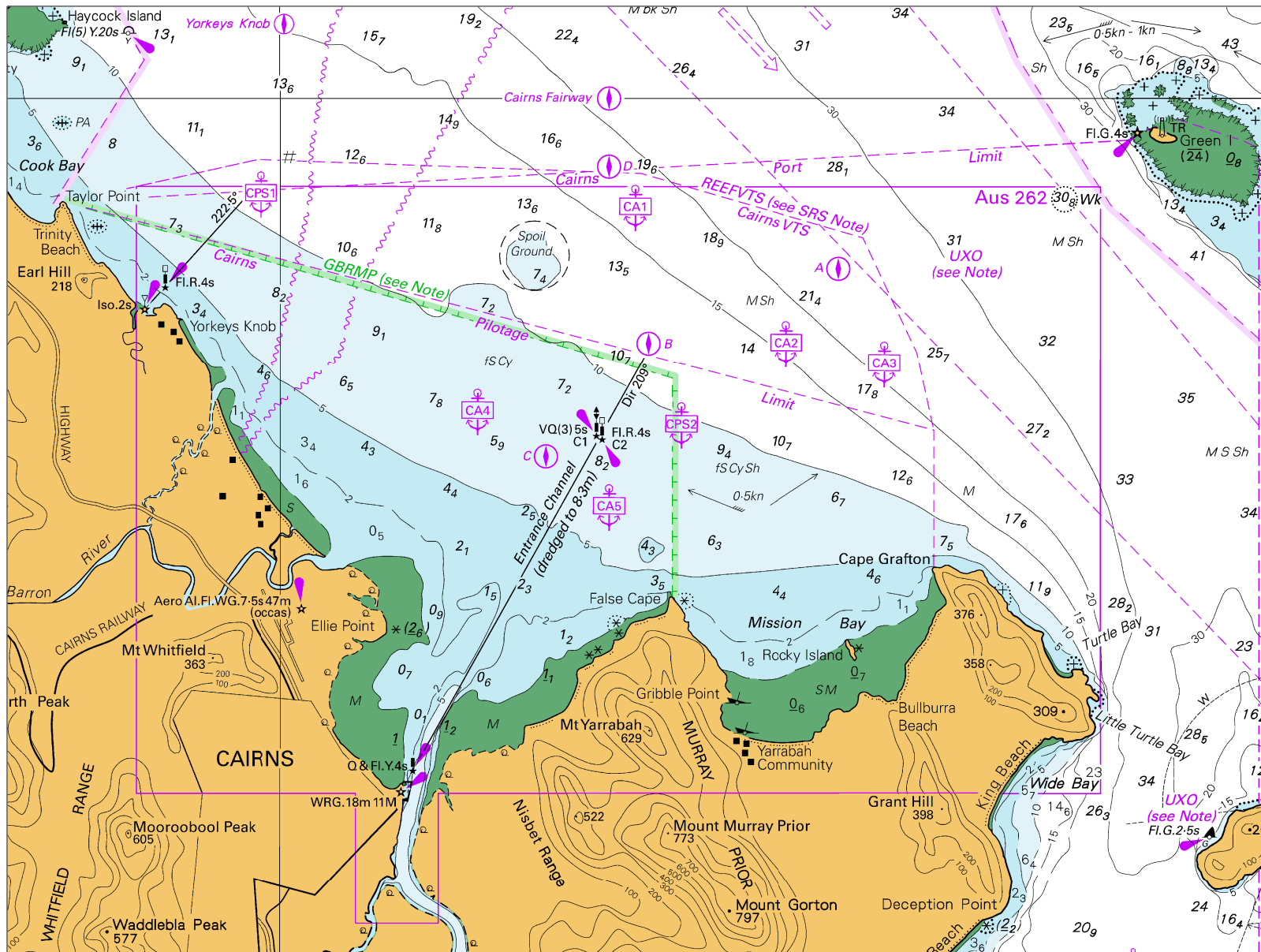
**Chart which will be affected - SLB 102 - SLB 302**

II

**HYDROGRAPHIC REPORTS**

NIL

To accompany Australian Notice to Mariners 732/2024

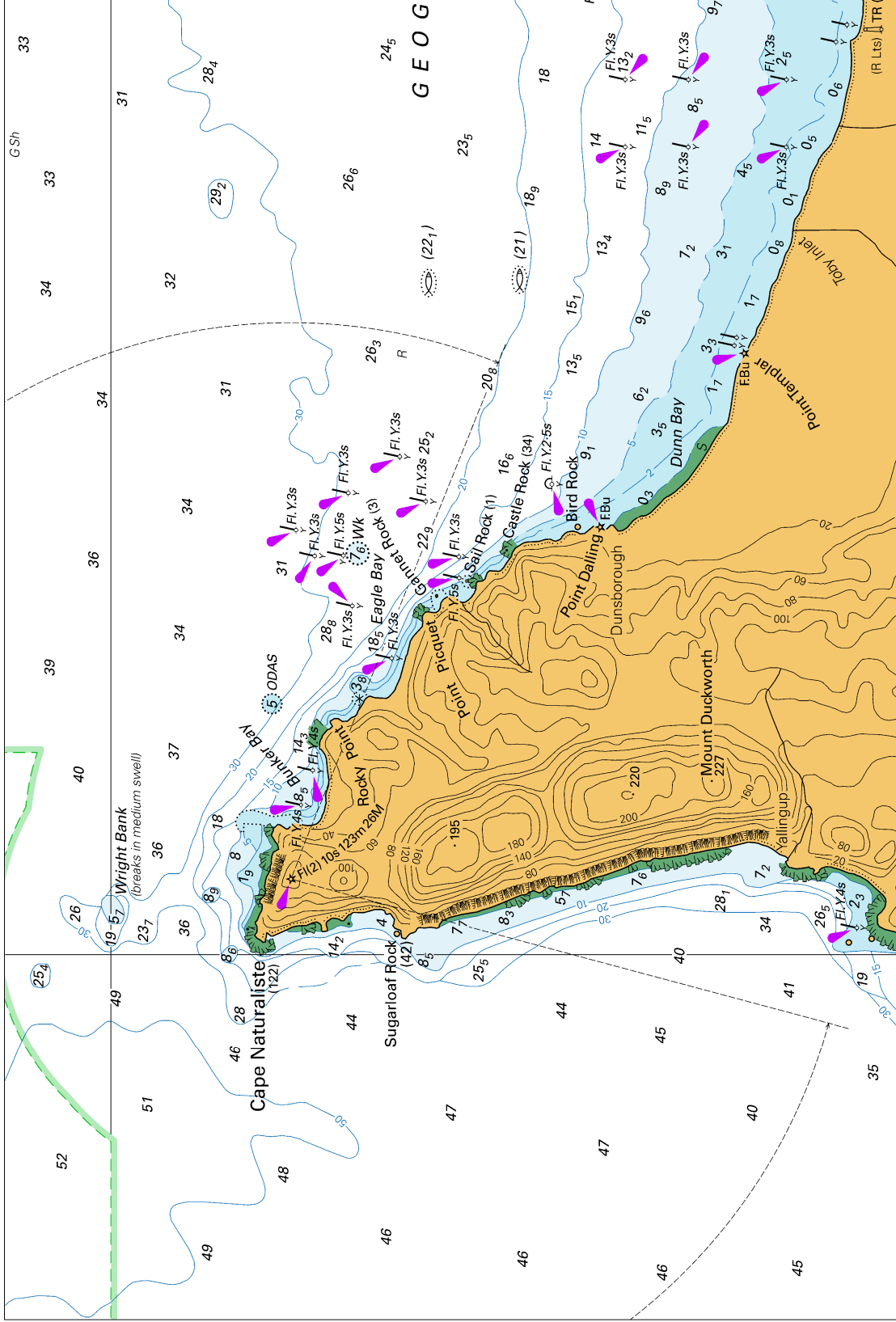


Block for chart Aus 830

© Commonwealth of Australia 2024

(212.2 x 159.1mm)

To accompany Australian Notice to Mariners 735/2024



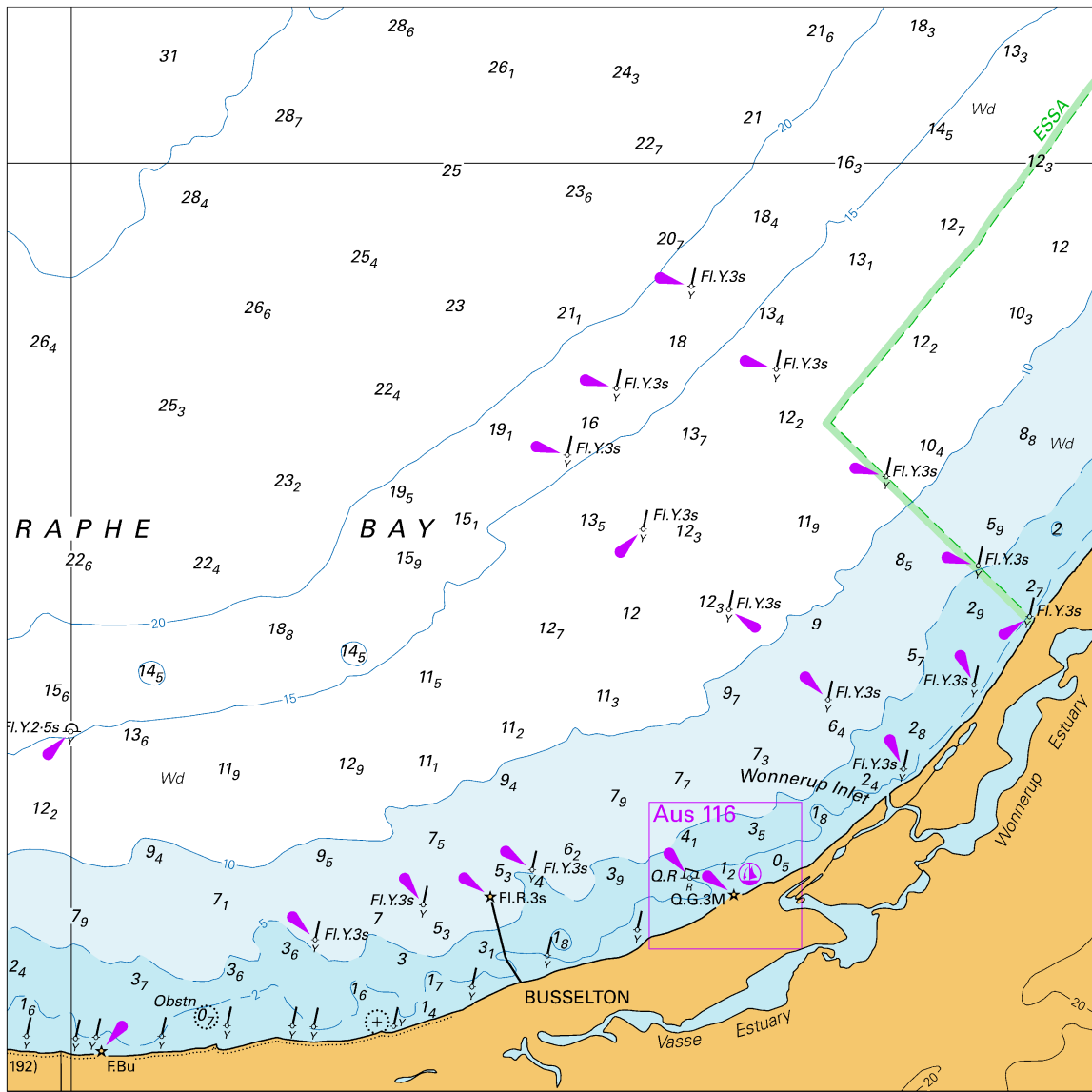
Block A for chart Aus 755

© Commonwealth of Australia 2024

(216.1 x 146.3mm)



To accompany Australian Notice to Mariners 735/2024

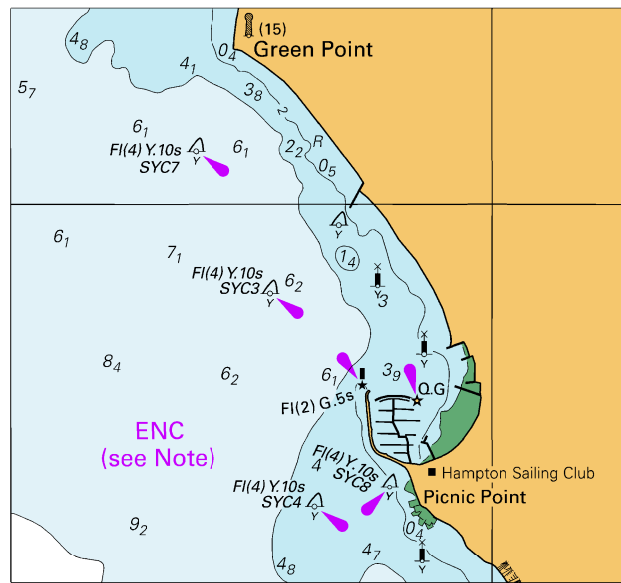


Block B for chart Aus 755

© Commonwealth of Australia 2024

(150.9 x 150.5mm)

To accompany Australian Notice to Mariners 737/2024



Block for chart Aus155

(81.5 x 75.9mm)

© Commonwealth of Australia 2024