



30 August 2024

Edition 18

AUSTRALIAN NOTICES TO MARINERS

Notices 661 - 687

Published fortnightly by the Australian Hydrographic Office



Australian Notices to Mariners are the authority for correcting charts and publications published by the Australian Hydrographic Office covering Australia, Papua New Guinea, Solomon Islands, Australian Antarctic Territory and Timor-Leste.

Commodore R.L. PHILLIPS RAN
Hydrographer of Australia

SECTIONS.

- I. **Australian Notices to Mariners, including blocks and notes.**
- II. **Hydrographic Reports.**

SUPPLEMENTS.

- I. **Tracings**
 - II. **Cumulative List of Australian Notices to Mariners.**
 - III. **Cumulative List of Temporary and Preliminary Australian Notices to Mariners.**
 - IV. **Temporary and Preliminary Notices in force.**
-
-

© Commonwealth of Australia 2024

This work is copyright. Apart from any use permitted under the Copyright Act 1968, no part may be reproduced by any process, adapted, communicated or commercially exploited without prior written permission from The Commonwealth represented by the Australian Hydrographic Office.

IMPORTANT NOTICE

This edition of Notices to Mariners includes all significant information affecting AHO products which the AHO has become aware of since the last edition. All reasonable efforts have been made to ensure the accuracy and completeness of the information, including third party information, on which these updates are based. The AHO regards third parties from which it receives information as reliable, however the AHO cannot verify all such information and errors may therefore exist. The AHO does not accept liability for errors in third party information.

GENERAL INSTRUCTIONS

The substance of these notices should be inserted on the charts affected.

Bearings are referred to the true compass and are reckoned clockwise from North; those relating to lights are given as seen by an observer from seaward.

Positions quoted in notices relate to WGS84 which is the horizontal datum for all charts produced by the Australian Hydrographic Office.

The range quoted for a light is its nominal range.

Depths are with reference to the chart datum of each chart. Heights are above mean high water springs or mean higher high water, as appropriate.

The capital letter (P) or (T) after the number of any notice denotes a preliminary or temporary notice respectively, which are contained separately at the end of the permanent notices.

REPORTING OF DANGERS

Mariners are particularly requested to notify the AUSTRALIAN HYDROGRAPHIC OFFICE, Locked Bag 8801 Wollongong, NSW 2500 (e-mail datacentre@hydro.gov.au or, alternatively by filling in and submitting the [Hydrographic Notes](#) forms located on the web site – www.hydro.gov.au), immediately on the discovery of new dangers or suspected dangers to navigation. For changes or defects in aids to navigation notify AusSAR (Fax 02-6230 6868 or email rccaus@amsa.gov.au).

AUTHORISED USE

Copies of Australian notices are available free of charge from the Australian Hydrographic Office (AHO) website (www.hydro.gov.au) and through the eNotices (email) service (www.hydro.gov.au/enotices/enotices.htm).

Individual Notices may be copied for the purpose of inserting Notice substance on official charts and publications. Paper copies may be printed by chart agents and distributed to customers on a cost recovery basis. Participating chart agents are listed on the AHO website as providing a 'Paper Notices to Mariners' service (www.hydro.gov.au/prodserv/agents-list.htm). Copies of the notices may not be sold for profit without prior written agreement.

NUMERICAL INDEX OF NOTICES TO MARINERS

Edition No 18

Notices	Aus Chart, INT Chart, ENC Cell, AHP, BA Pubs
661	Aus 607, 4603, 4708, INT 603, 708, PNG 680
662	Aus 20, 204, PNG 545, 554
663	Aus 812
664	Aus 200
665	PNG 684
666	Aus 23
667	Aus 316
668	Aus 25
669	Aus 15
670	Aus 21
671	Aus 55, 326, 327
672	Aus 64, 328, 743, 744
673	Aus 400, 608, 4723, INT 723
674	Aus 606, 4714, INT 714
675	Aus 143, 157
676	Aus 176
677(T)	Aus 237
678(T)	Aus 245, 246
679(T)	Aus 25, 26, 309, 316
680(T)	Aus 26
681(T)	Aus 26
682(T)	Aus 50, 324
683(T)	Aus 57, 327
684(T)	Aus 118
685(T)	Aus 40, 732, 733
686(T)	Aus 357, 487
687(T)	Aus 171, 173

NUMERICAL INDEX OF CHARTS AFFECTED

Edition No 18

Aus Chart	Notices	INT Chart	Notices
Aus 15	669	INT 708	661
Aus 20	662	INT 714	674
Aus 21	670	INT 723	673
Aus 23	666		
Aus 25	668, 679(T)		
Aus 26	679(T), 680(T), 681(T)		
Aus 40	685(T)		
Aus 50	682(T)		
Aus 55	671		
Aus 57	683(T)		
Aus 64	672		
Aus 118	684(T)		
Aus 143	675		
Aus 157	675		
Aus 171	687(T)		
Aus 173	687(T)		
Aus 176	676		
Aus 200	664		
Aus 204	662		
Aus 237	677(T)		
Aus 245	678(T)		
Aus 246	678(T)		
Aus 309	679(T)		
Aus 316	667, 679(T)		
Aus 324	682(T)		
Aus 326	671		
Aus 327	671, 683(T)		
Aus 328	672		
Aus 357	686(T)		
Aus 400	673		
Aus 487	686(T)		
Aus 606	674		
Aus 607	661		
Aus 608	673		
Aus 732	685(T)		
Aus 733	685(T)		
Aus 743	672		
Aus 744	672		
Aus 812	663		
Aus 4603	661		
Aus 4708	661		
Aus 4714	674		
Aus 4723	673		
PNG 545	662		
PNG 554	662		
PNG 680	661		
PNG 684	665		

INT Chart	Notices
INT 603	661

661 AUSTRALIA - Products - New Charts, New Editions, Withdrawn Charts

Australian Hydrographic Office , UKHO

New Charts

<i>Chart</i>	<i>Title and Geographical limits</i>	<i>Scale</i>	<i>Publication Date</i>	<i>Remarks</i>
NIL				

New Electronic Navigation Chart (Aus ENC)

<i>Cell Name</i>	<i>Title</i>	<i>Publication Date</i>	<i>Remarks</i>
NIL			

New Editions and Withdrawn Charts

<i>Chart</i>	<i>Title</i>	<i>Scale</i>	<i>Publication Date</i>	<i>Remarks</i>
Aus 607 (Edition 3)	Indian Ocean - Cocos (Keeling) Islands - South Keeling Islands Plan: North Keeling Island	1:25 000 1:25 000	30 August 2024	New edition with general updating throughout; including new ESSA limits. Chart Aus 607 Edition 2 dated 9 August 2013 is now superseded and must be withdrawn from use.
PNG 680 (Edition 3)	Papua New Guinea - New Britain - Approaches to Blanche Bay Plan: Simpson and Matupit Harbour	1:75 000 1:12 500	30 August 2024	New edition with general updating throughout; including new bathymetric data. Chart PNG 680 Edition 2 dated 26 April 2024 is now superseded and must be withdrawn from use.
Aus 4603 (INT 603) (Edition 8)	Indian Ocean - Australia - North Coast and adjacent waters	1:3 500 000	30 August 2024	New edition with general updating throughout; including new bathymetric data, pipelines and ESSA limits. Chart Aus 4603 INT 603 Edition 7 dated 30 September 2022 is now superseded and must be withdrawn from use.
Aus 4708 (INT 708) (Edition 10)	Indian Ocean - Australia - West Coast	1:3 500 000	30 August 2024	New edition with general updating throughout; including new bathymetric data, pipelines and ESSA limits. Chart Aus 4708 INT 708 Edition 9 dated 1 April 2022 is now superseded and must be withdrawn from use.

661 AUSTRALIA - Products - New Charts, New Editions, Withdrawn Charts**Admiralty publication**

<i>NP No</i>	<i>Title</i>	<i>Date</i>	<i>Remarks</i>
NP205-25	ADMIRALTY Tide Tables South China Sea and Indonesia (Including Tidal Stream Tables) Volume 5, 2025 Edition.	5/9/2024	New Edition.
NP286(4)	ADMIRALTY List of Radio Signals. Pilot Services, Vessel Traffic Services and Port Operations Indian sub-continent, South East Asia and Australasia Volume 6(4) 5th Edition (2024).	5/9/2024	The 4th Edition (2023) of NP286(4) is cancelled.

Chart permanently withdrawn

Charts listed above as withdrawn no longer meet chart carriage requirements and should be marked as "superseded" and replaced with the new chart/ new edition listed prior to passage through the area covered by the new chart.

When placing orders with a chart agent between notice of forthcoming edition and its publication, mariners should advise whether their order pertains to the current edition or the new edition.

For further details refer to the AHO website at www.hydro.gov.au for new edition and new chart stock arrival information.

662 AUSTRALIA - Products - New Charts and New Editions to be published shortly

Australian Hydrographic Office

New Charts to be published shortly

Chart	Title	Scale	Remarks
NIL			

New Editions to be published shortly

Chart	Title	Scale	Remarks
Aus 20	Australia - North Coast - Northern Territory - Clarence Strait	1:50 000	New edition with general updating throughout; including new bathymetric data.
Aus 204	Australia - East Coast - New South Wales - Broken Bay	1:40 000	New edition with general updating throughout; including new bathymetric data.
PNG 545	Papua New Guinea - New Britain - New Ireland - Rabaul to Cape Lambert	1:150 000	New edition with general updating throughout; including new bathymetric data.
PNG 554	Papua New Guinea - New Britain - New Ireland - Cape St George to Rabaul	1:150 000	New edition with general updating throughout; including new bathymetric data.

663 AUSTRALIA - NEW SOUTH WALES - Korffs Islet - Light

Transport for NSW

Aus 812 [314/2024]

Amend	light to Q(3)10s 5M	30° 19'.0 S	153° 09'.4 E
-------	---------------------	-------------	--------------

664 AUSTRALIA - NEW SOUTH WALES - Port Jackson - Parramatta River - Rocky Point to Rhodes Point - Nav aids

Transport for NSW

Aus 200 (Parramatta River) [631/2024]

Insert	port lateral cylindrical light buoy, <i>Fl.R.2s</i> , without topmark	33° 49'.935 S	151° 05'.981 E
Replace	light beacon with special light beacon, <i>Fl.Y.5s</i> , with topmark	33° 49'.37 S	151° 05'.19 E
Delete	light	33° 49'.89 S	151° 05'.93 E

665 PAPUA NEW GUINEA - Gazelle Harbour - Unexploded ordnance

Australian Hydrographic Office

Note: position of existing chart notes may vary on certain charts.

PNG 684 (Empress Augusta Bay) [927/2022]

Insert	magenta dashed circle with radius 0.6M, with magenta legend <i>Unexploded Ordnance (see Note)</i> , centred on	6° 29'.97 S	155° 11'.36 E
Replace	FMA chart note with accompanying chart note, UNEXPLODED ORDNANCE (UXO) , in N border	6° 12'.0 S	155° 11'.5 E

666 AUSTRALIA - NORTHERN TERRITORY - Bathurst Island - Nomenclature

Australian Hydrographic Office

Aus 23 [515/2024]

Insert	name, <i>Waniyanga Beach</i> , centred on	11° 49'.38 S	130° 36'.69 E
Amend	name to <i>Wurru Miyanga</i>	11° 45'.7 S	130° 38'.1 E
	name to <i>Marralayangimpi Creek</i>	11° 49'.2 S	130° 32'.8 E
Delete	name, <i>Wanyanga Beach</i>	11° 49'.6 S	130° 35'.6 E

667 AUSTRALIA - NORTHERN TERRITORY - Channel Point - Airfield

Australian Hydrographic Office

Aus 316 [54/2024]

Move	airfield symbol, centred on	13° 06'.4 S	130° 08'.5 E
	to	13° 09'.26 S	130° 08'.58 E

668 AUSTRALIA - NORTHERN TERRITORY - Darwin - Channel Rock - Light buoy westwards

Northern Territory Government Notice 67/2024

Aus 25 [514/2024]

Insert	special pillar light buoy, <i>Fl.Y.4s</i> , with topmark	12° 24'.954 S	130° 45'.919 E
--------	--	---------------	----------------

669 AUSTRALIA - NORTHERN TERRITORY - Elcho Island - Nomenclature

Australian Hydrographic Office

Aus 15 (Cadell Strait) [225/2023]

Amend	name to <i>Ganapay Cliffs</i>	12° 01'.3 S	135° 34'.2 E
-------	-------------------------------	-------------	--------------

670 AUSTRALIA - NORTHERN TERRITORY - Melville Island - Nomenclature

Australian Hydrographic Office

Aus 21 [301/2009]

Amend	name to <i>Snake Bay Barge Landing</i>	11° 24'.84 S	130° 39'.99 E
-------	--	--------------	---------------

671 AUSTRALIA - WESTERN AUSTRALIA - Port Walcott - Delambre Reef - Depths eastwards

Discovery Marine

Aus 55 [642/2024]

Insert	depth, 6 ₂ m, enclosed by contour	20° 25'.17 S	117° 20'.68 E
	depth, 5m, enclosed by contour	20° 25'.65 S	117° 19'.19 E
Delete	depth, 13 ₆ m	20° 25'.6 S	117° 19'.3 E

Aus 326 [642/2024]

Insert	depth, 6 ₂ m, and extend contour SW to enclose	20° 25'.17 S	117° 20'.68 E
	depth, 5m, enclosed by contour	20° 25'.65 S	117° 19'.19 E
Delete	depth, 7m	20° 24'.9 S	117° 21'.2 E
	depth, 10 ₉ m	20° 25'.7 S	117° 19'.0 E

Aus 327 [642/2024]

Insert	depth, 5m, enclosed by contour	20° 25'.65 S	117° 19'.19 E
--------	--------------------------------	--------------	---------------

672 AUSTRALIA - WESTERN AUSTRALIA - Thevenard Island - Lit platform; obstruction

Former Notice - 1069(T)/2023 is cancelled

Chevron Australia

Aus 64 [644/2024]

Insert	depth, 5m, enclosed by danger circle with legend, <i>Obstn</i>	21° 36'.95 S	114° 56'.55 E
Delete	lit platform and legend, ROLLER C Mo(U)15s	21° 36'.9 S	114° 56'.5 E

Aus 328 [644/2024]

Insert	depth, 5m, enclosed by danger circle with legend, <i>Obstn</i>	21° 36'.95 S	114° 56'.55 E
Delete	lit platform and legend, Mo(U)15s	21° 36'.9 S	114° 56'.5 E
	depth, 7 ₈ m	21° 37'.4 S	114° 56'.7 E

Aus 743 [644/2024]

Insert	depth, 5m, enclosed by danger circle with legend, <i>Obstn</i>	21° 36'.95 S	114° 56'.55 E
Delete	lit platform and legend, ROLLER C Mo(U)15s	21° 36'.9 S	114° 56'.5 E

Aus 744 [644/2024]

Insert	depth, 5m, enclosed by danger circle with legend, <i>Obstn</i>	21° 36'.95 S	114° 56'.55 E
Delete	lit platform and legend, ROLLER C Mo(U)15s	21° 36'.9 S	114° 56'.5 E

673 INDIAN OCEAN - Christmas Island - ESSA limit; depths

33 Below Pty Ltd , Department of Climate Change, Energy, the Environment and Water

Aus 400 [268/2019]

Insert	ESSA limit with legend, <i>ESSA (see Note)</i> , between	10° 26'.82 S	105° 39'.18 E
		10° 24'.00 S	105° 39'.18 E
		10° 24'.00 S	105° 43'.00 E
		10° 28'.00 S	105° 43'.00 E
		10° 28'.00 S	105° 42'.79 E
	ESSA limit with legend, <i>ESSA (see Note)</i> , between	9° 30'.00 S	104° 49'.52 E
		9° 46'.83 S	105° 50'.92 E
		10° 24'.04 S	107° 15'.00 E
	accompanying chart note, ENVIRONMENTALLY SENSITIVE SEA AREA (ESSA)	10° 09'.0 S	104° 29'.0 E

Aus 608 [NE 13/7/2018]

Insert	accompanying chart note, ENVIRONMENTALLY SENSITIVE SEA AREA (ESSA)	10° 20'.0 S	106° 04'.0 E
	accompanying block	10° 27'.0 S	105° 42'.0 E

Aus 4723 (INT 723) [644/2024]

Insert	accompanying block	11° 45'.0 S	108° 30'.0 E
	accompanying chart note, ENVIRONMENTALLY SENSITIVE SEA AREA (ESSA)	7° 16'.0 S	109° 43'.0 E

674 INDIAN OCEAN - Cocos (Keeling) Islands - ESSA limit

Department of Climate Change, Energy, the Environment and Water

Aus 606 [59/2023]

Insert	accompanying block A	11° 48'.0 S	96° 49'.0 E
	accompanying block B	12° 09'.0 S	96° 50'.0 E

Aus 4714 (INT 714) [59/2023]

Insert	accompanying block	12° 00'.0 S	95° 30'.0 E
	accompanying chart note, ENVIRONMENTALLY SENSITIVE SEA AREA (ESSA)	38° 35'.0 S	96° 20'.0 E

675 AUSTRALIA - VICTORIA - Port Phillip - Prince George Bank - Light beacons; AIS

Parks Victoria Notice 339/2024, Port of Melbourne

Aus 143 [645/2024]

Amend	light beacon to <i>Prince George Fl.R.4s 8M</i>	38° 06'.4 S	144° 44'.2 E
Delete	magenta circle and legend, AIS	38° 06'.4 S	144° 44'.2 E

Aus 157 [1049/2023]

Amend	light beacon to <i>Prince George Fl.R.4s 8M</i>	38° 06'.41 S	144° 44'.20 E
	light beacon to <i>Q.R.3M No4</i>	38° 07'.68 S	144° 44'.27 E
Delete	magenta circle and legend, AIS	38° 06'.41 S	144° 44'.20 E

676 AUSTRALIA - TASMANIA - Bathurst Channel - Nomenclature

A Boon

Aus 176 [315/2022]

Amend	name to <i>Little Louisa Islet</i>	43° 20'.40 S	146° 02'.55 E
-------	------------------------------------	--------------	---------------

677(T)/2024 AUSTRALIA - QUEENSLAND - Brisbane River - Inner Bar Reach - Dredging operations

Maritime Safety Queensland Notice 442(T)/2024

The barge *Ken Harvey* and support vessels are conducting dredging operations in the vicinity of position 27° 22'.96 S 153° 09'.35 E.

The barge will deploy anchors 50m from the barge when dredging is in progress.

The barge will monitor VHF Ch 12.

Mariners are advised to navigate with caution in the area and are requested to pass at slow speed with minimal wash.

Chart temporarily affected - Aus 237**678(T)/2024 AUSTRALIA - QUEENSLAND - Gladstone - South Trees Point - Scientific instruments**

Maritime Safety Queensland Notice 430(T)/2024

Special light buoys, *Fl. Y*, exist in positions 23° 51'.36 S 151° 19'.32 E and 23° 50'.98 S 151° 17'.19 E.

Chart temporarily affected - Aus 245 - Aus 246**679(T)/2024 AUSTRALIA - NORTHERN TERRITORY - Darwin - Military exercise**

Department of Defence

Mariners are advised that there will be an increase in Naval activity in the Port of Darwin from 12 September to 19 September associated with EXERCISE KAKADU 2024.

The North Australia Exercise Area (NAXA) will be activated for military exercises including live firing within an area bounded by:

13° 56'.38 S 129° 34'.0 E to 11° 50'.34 S 128° 57'.6 E, 11° 50'.34 S 128° 57'.6 E to 12° 25'.24 S 130° 54'.23 E, then 12° 25'.24 S 130° 54'.23 E to 13° 56'.38 S 129° 34'.0 E.

Vessels should expect that live firing will take place within the NAXA during the period of the exercise at any time.

Merchant traffic may be invited to alter course to facilitate naval training manoeuvres. Vessels transiting the area during the exercise period are advised to navigate with caution, monitor VHF Channel 16, and ensure their vessels Automatic Identification Systems (AIS) is activated. Temporary anchorages have been established in the vicinity of Talc Head. There will be an increase in traffic crossing between the temporary anchorages and Darwin Naval Base. Mariners are advised to navigate with additional caution. Maritime industry enquiries related to Exercise KAKADU should be directed to RAN Maritime Trade Operations via phone +61 (0) 431764980 or email MTO.OPSO@defence.gov.au.

Chart temporarily affected - Aus 25 - Aus 26 - Aus 309 - Aus 316**680(T)/2024 AUSTRALIA - NORTHERN TERRITORY - Darwin - Scientific instruments***Former Notice - 610(T)/2024 is cancelled*

Northern Territory Government Notice 68(T)/2024, 69(T)/2024

Special light buoys, *Fl. Y.1-5s*, exist in the following positions:

12° 29'.50 S 130° 53'.75 E
 12° 29'.67 S 130° 53'.80 E
 12° 29'.67 S 130° 54'.15 E
 12° 29'.42 S 130° 54'.14 E.

Special light buoys, *Fl. Y.4s*, exist in the following positions:

12° 29'.61 S 130° 53'.75 E
 12° 29'.48 S 130° 54'.15 E.

Chart temporarily affected - Aus 26

681(T)/2024 AUSTRALIA - NORTHERN TERRITORY - Darwin - Survey operations; dredging operations

Former Notice - 651(T)/2024 is cancelled

Northern Territory Government Notice 57/2024, 71/2024

Vessel *Edendrach* is conducting survey operations in an area bounded by the following positions:

12° 30'.23 S 130° 53'.46 E
 12° 30'.22 S 130° 54'.29 E
 12° 29'.36 S 130° 54'.28 E
 12° 29'.36 S 130° 53'.46 E.

The dredge *Arnhem* is conducting dredging operations in the area. A submerged and floating pipeline marked by special light buoys, *Fl.Y.4s*, will extend from the dredge to the shoreline.

Mariners are advised to navigate with caution in the area.

Chart temporarily affected - Aus 26**682(T)/2024 AUSTRALIA - WESTERN AUSTRALIA - Broome - Survey operations**

EGS Survey Pty Ltd

On or about 5 September 2024, vessel *Tengarra Explorer* will be conducting survey operations in an area bounded by the following positions:

18° 12'.36 S 121° 57'.23 E
 18° 10'.57 S 122° 00'.01 E
 18° 04'.63 S 122° 02'.25 E
 18° 02'.53 S 122° 02'.24 E
 18° 01'.68 S 122° 00'.91 E
 17° 58'.66 S 122° 01'.82 E
 17° 59'.25 S 122° 09'.21 E
 17° 58'.15 S 122° 08'.04 E
 17° 57'.99 S 122° 05'.18 E
 17° 48'.19 S 122° 01'.96 E
 17° 48'.35 S 121° 52'.95 E
 17° 50'.08 S 121° 51'.46 E
 17° 56'.33 S 121° 52'.34 E
 18° 07'.65 S 121° 47'.76 E.

Tide gauges, marked by special light buoys *Fl.Y.2s*, will be deployed in the following positions:

17° 47'.80 S 122° 02'.20 E
 17° 48'.10 S 121° 50'.50 E
 17° 57'.90 S 121° 49'.20 E
 17° 58'.63 S 122° 03'.93 E
 17° 59'.10 S 122° 00'.00 E
 18° 07'.60 S 121° 47'.40 E
 18° 12'.80 S 121° 57'.23 E.

Mariners are advised to navigate with caution in the area.

Chart temporarily affected - Aus 50 - Aus 324**683(T)/2024 AUSTRALIA - WESTERN AUSTRALIA - Dampier - Malus Islands - Drill rig**

Australian Maritime Safety Authority Auscoast Warning 249/2024

Drill rig *Valaris 107* is moored in position 20° 29'.50 S 116° 41'.70 E.

Chart temporarily affected - Aus 57 - Aus 327**684(T)/2024 AUSTRALIA - WESTERN AUSTRALIA - King George Sound - Scientific instruments recovered**

Former Notice - 212(T)/2022 is cancelled

Department of Transport WA

Cancel this notice on receipt.

Chart formerly affected - Aus 118

685(T)/2024 AUSTRALIA - WESTERN AUSTRALIA - Yampi Sound - Comber Rock - Light buoy unlit
Kimberley Ports Authority Notice 10/2024

The east cardinal light buoy, Q(3)10s (16° 06'.42 S 123° 39'.66 E), is unlit.

Chart temporarily affected - Aus 40 - Aus 732 - Aus 733

686(T)/2024 AUSTRALIA - VICTORIA - Ninety Mile Beach - Subsea operations completed eastwards
Former Notice - 461(T)/2024 is cancelled
Australian Maritime Safety Authority

Cancel this notice on receipt.

Chart formerly affected - Aus 357 - Aus 487

687(T)/2024 AUSTRALIA - TASMANIA - River Derwent - Blackamns Bay to Halfmoon Bay - Pipe laying operations
Marine and Safety Tasmania Notice M299(T)/2024

Vessel *Wandana* is conducting pipe laying operations in an area bounded by the following positions:

43° 01'.66 S 147° 24'.96 E
43° 01'.06 S 147° 24'.98 E
43° 00'.07 S 147° 19'.50 E
43° 00'.54 S 147° 19'.41 E.

A 500m clearance is requested around the vessel.

Mariners are advised to navigate with caution in the area.

Chart temporarily affected - Aus 171 - Aus 173

HYDROGRAPHIC REPORTS

<i>Locality</i>	<i>Report</i>	<i>Ship/Authority</i>	<i>Observer</i>
TAS- Bathurst Channel	Nomenclature		A Boon

To accompany Australian Notice to Mariners 665/2024

UNEXPLODED ORDNANCE (UXO)

The area is safe for surface navigation only; it is not safe for anchoring, trawling or seabed activities. For details see Mariners Handbook for Australian Waters AHP 20.

Note for chart PNG 684

To accompany Australian Notice to Mariners 673/2024

ENVIRONMENTALLY SENSITIVE SEA AREA
(ESSA)

Areas of this chart are Environmentally Sensitive Sea Areas (ESSA). Areas within this marine protected area have restrictions on access and activities. For details see Mariners Handbook for Australian Waters AHP 20.

Note for chart Aus 400

To accompany Australian Notice to Mariners 673/2024

ENVIRONMENTALLY SENSITIVE SEA AREA
(ESSA)

Areas of this chart are Environmentally Sensitive Sea Areas (ESSA). Areas within this marine protected area have restrictions on access and activities. For details see Mariners Handbook for Australian Waters AHP 20.

Note for chart Aus 608

To accompany Australian Notice to Mariners 673/2024

ENVIRONMENTALLY SENSITIVE SEA AREA
(ESSA)

Areas of this chart are Environmentally Sensitive Sea Areas (ESSA). Areas within this marine protected area have restrictions on access and activities. For details see Mariners Handbook for Australian Waters AHP 20.

Note for chart Aus 4723

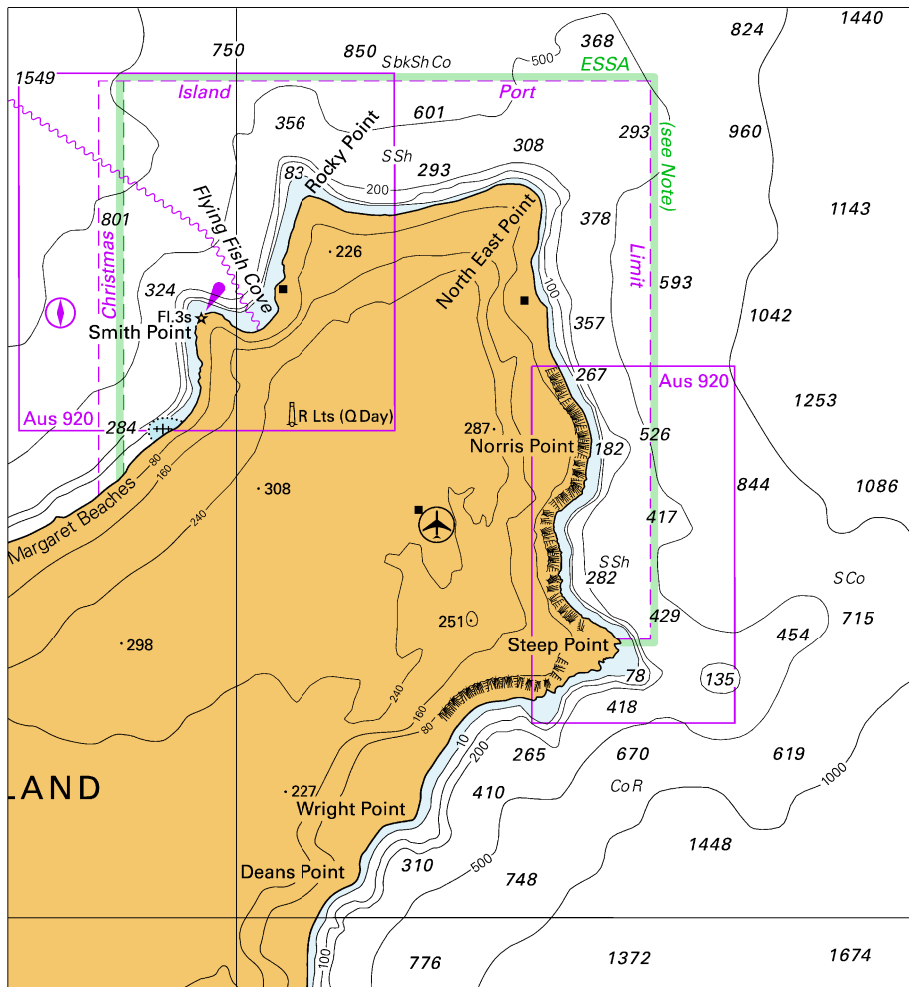
To accompany Australian Notice to Mariners 674/2024

ENVIRONMENTALLY SENSITIVE SEA AREA
(ESSA)

Areas of this chart are Environmentally Sensitive Sea Areas (ESSA). Areas within this marine protected area have restrictions on access and activities. For details see Mariners Handbook for Australian Waters AHP 20.

Note for chart Aus 4714

To accompany Australian Notice to Mariners 673/2024

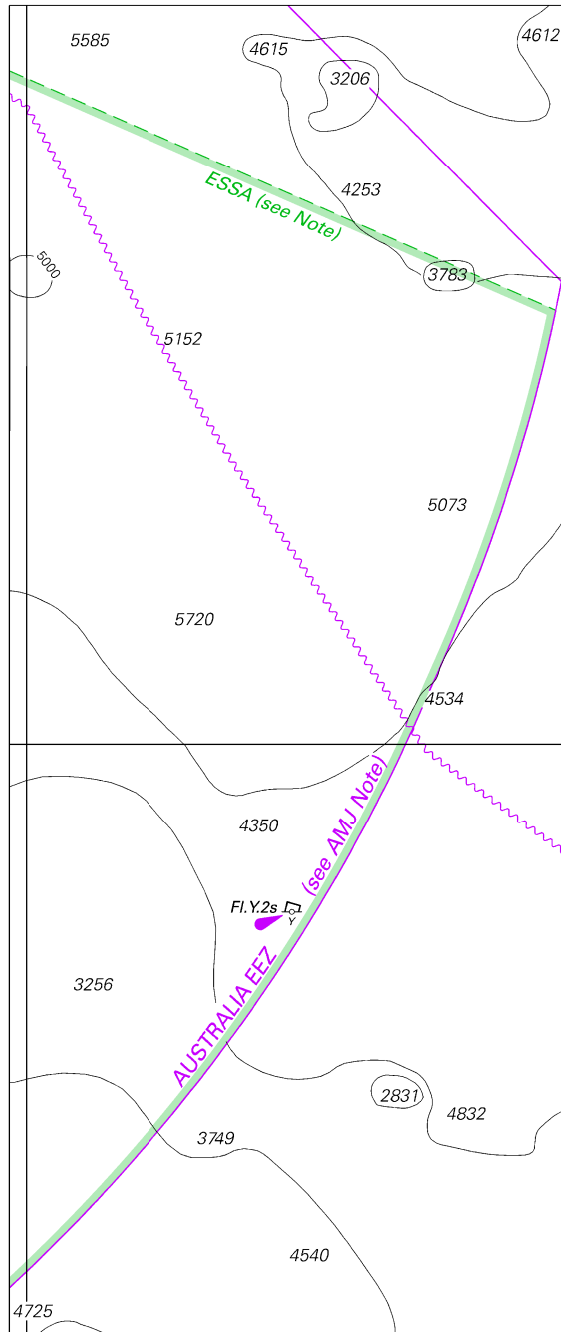


Block for chart Aus 608

© Commonwealth of Australia 2024

(120.2 x 129.7mm)

To accompany Australian Notice to Mariners 673/2024

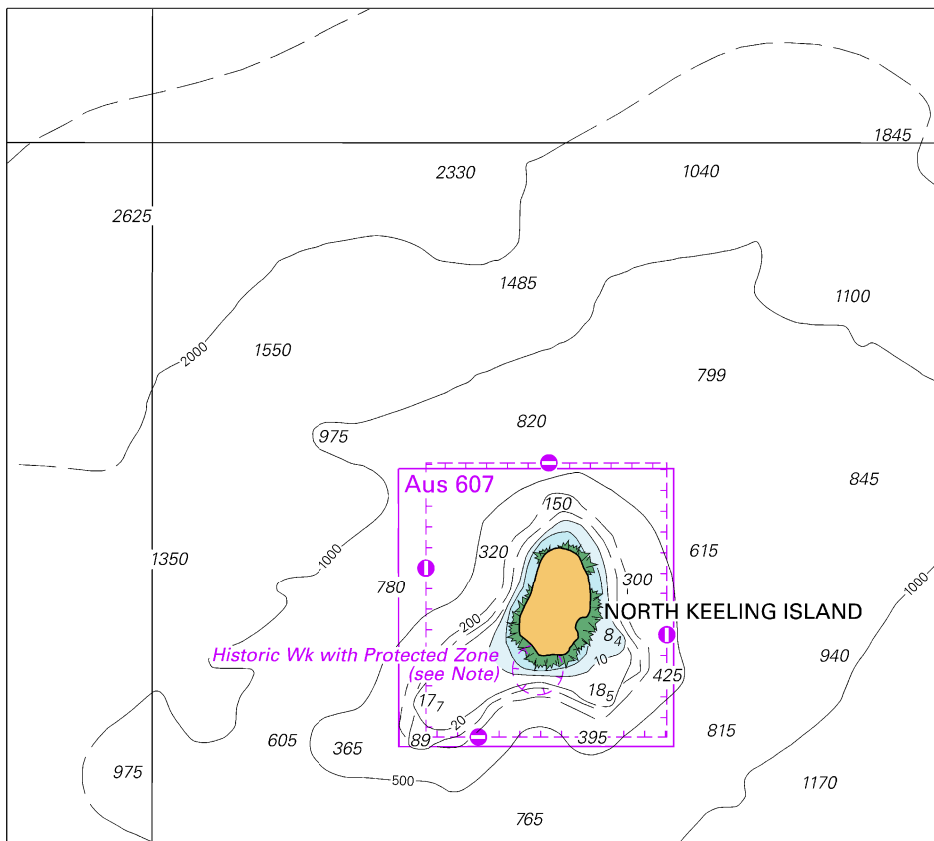


Block for chart Aus 4723

(74.1 x 175.8mm)

© Commonwealth of Australia 2024

To accompany Australian Notice to Mariners 674/2024

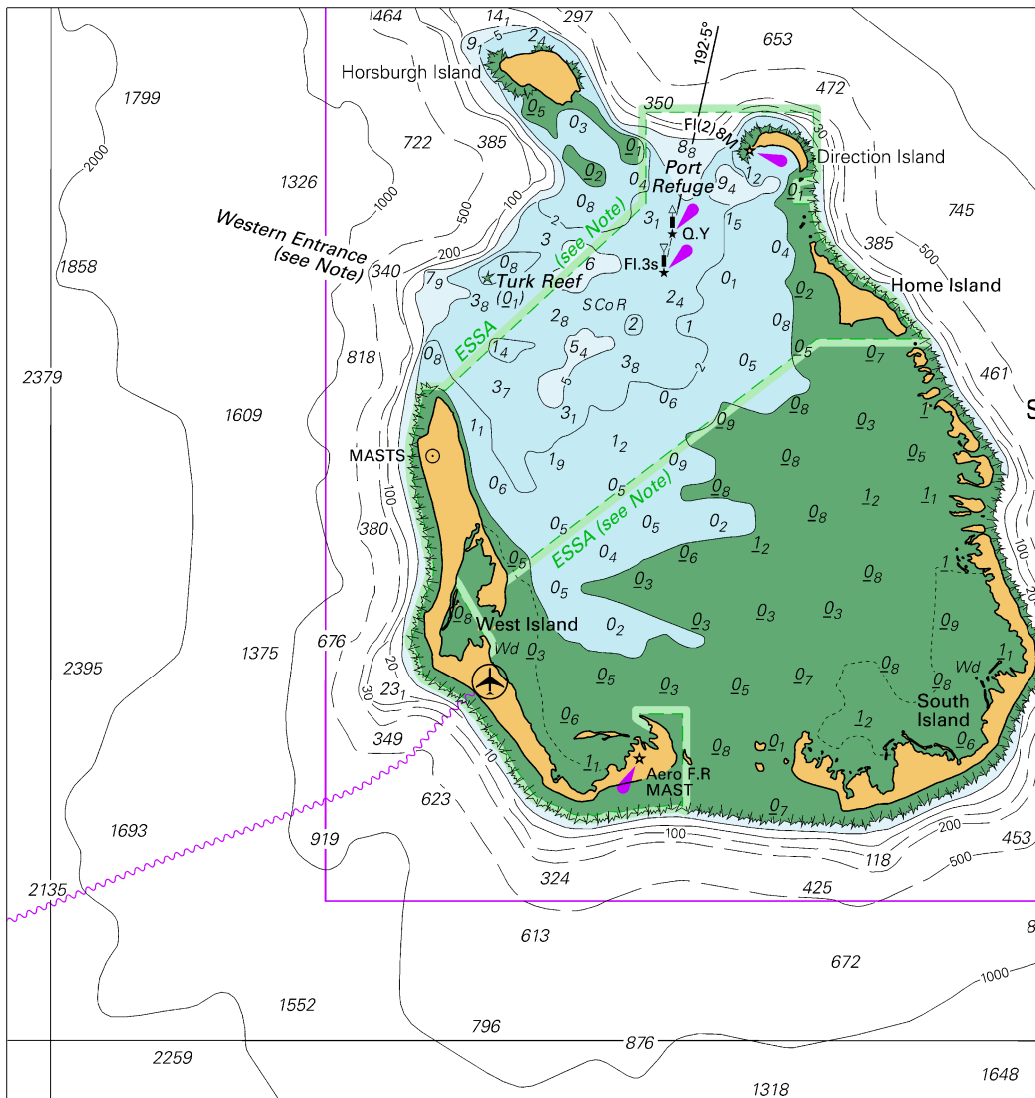


Block A for chart Aus 606

© Commonwealth of Australia 2024

(123.4 x 110.2mm)

To accompany Australian Notice to Mariners 674/2024

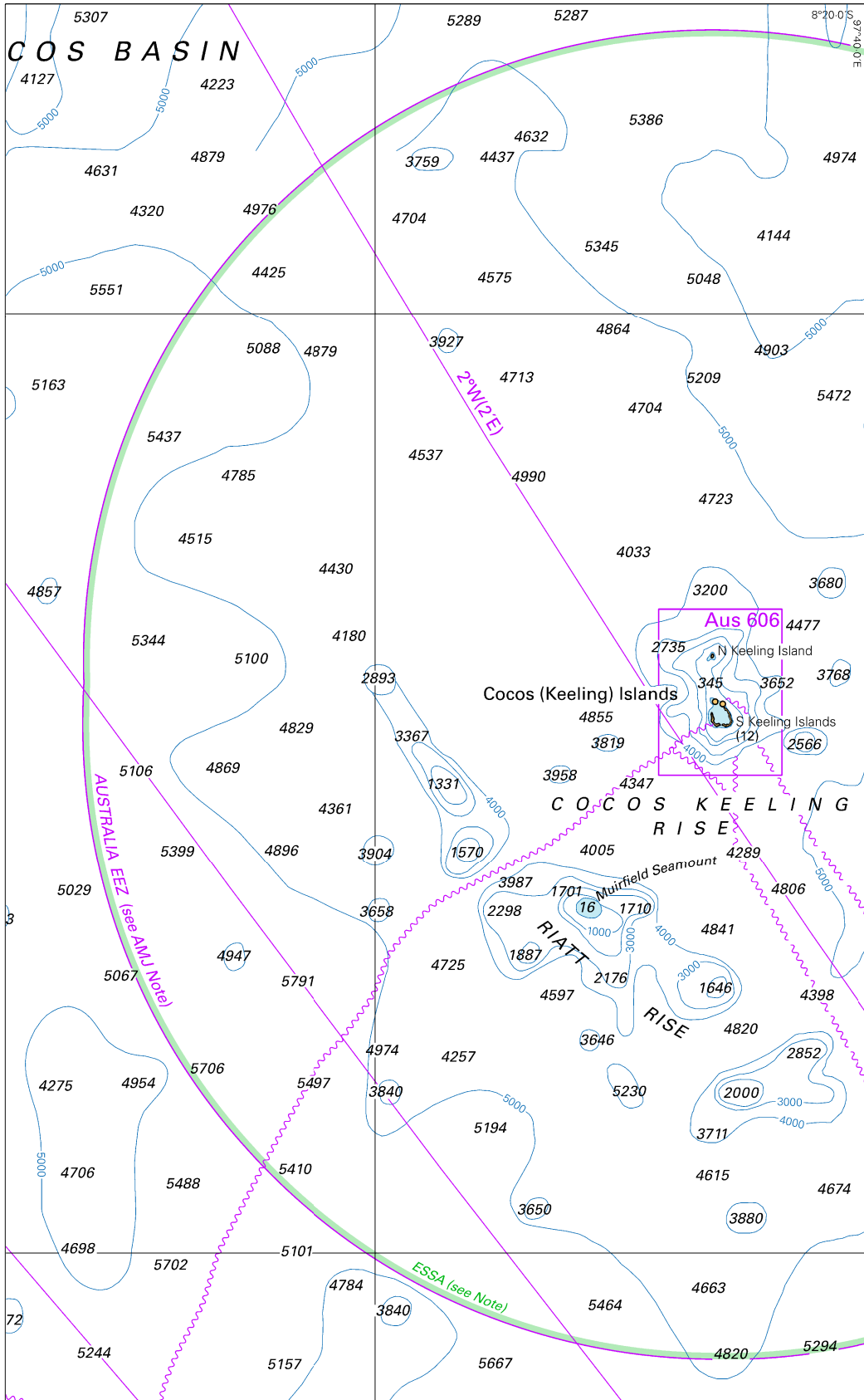


Block B for chart Aus 606

© Commonwealth of Australia 2024

(136.6 x 144.5mm)

To accompany Australian Notice to Mariners 674/2024



Block for chart Aus 4714

© Commonwealth of Australia 2024

(137.3 x 222.7mm)