



16 August 2024

Edition 17

AUSTRALIAN NOTICES TO MARINERS

Notices 628 - 660

Published fortnightly by the Australian Hydrographic Office



Australian Notices to Mariners are the authority for correcting charts and publications published by the Australian Hydrographic Office covering Australia, Papua New Guinea, Solomon Islands, Australian Antarctic Territory and Timor-Leste.

Commodore R.L. PHILLIPS RAN
Hydrographer of Australia

SECTIONS.

- I. **Australian Notices to Mariners, including blocks and notes.**
- II. **Hydrographic Reports.**

SUPPLEMENTS.

- I. **Tracings**
 - II. **Cumulative List of Australian Notices to Mariners.**
 - III. **Cumulative List of Temporary and Preliminary Australian Notices to Mariners.**
 - IV. **Temporary and Preliminary Notices in force.**
-
-

© Commonwealth of Australia 2024

This work is copyright. Apart from any use permitted under the Copyright Act 1968, no part may be reproduced by any process, adapted, communicated or commercially exploited without prior written permission from The Commonwealth represented by the Australian Hydrographic Office.

IMPORTANT NOTICE

This edition of Notices to Mariners includes all significant information affecting AHO products which the AHO has become aware of since the last edition. All reasonable efforts have been made to ensure the accuracy and completeness of the information, including third party information, on which these updates are based. The AHO regards third parties from which it receives information as reliable, however the AHO cannot verify all such information and errors may therefore exist. The AHO does not accept liability for errors in third party information.

GENERAL INSTRUCTIONS

The substance of these notices should be inserted on the charts affected.

Bearings are referred to the true compass and are reckoned clockwise from North; those relating to lights are given as seen by an observer from seaward.

Positions quoted in notices relate to WGS84 which is the horizontal datum for all charts produced by the Australian Hydrographic Office.

The range quoted for a light is its nominal range.

Depths are with reference to the chart datum of each chart. Heights are above mean high water springs or mean higher high water, as appropriate.

The capital letter (P) or (T) after the number of any notice denotes a preliminary or temporary notice respectively, which are contained separately at the end of the permanent notices.

REPORTING OF DANGERS

Mariners are particularly requested to notify the AUSTRALIAN HYDROGRAPHIC OFFICE, Locked Bag 8801 Wollongong, NSW 2500 (e-mail datacentre@hydro.gov.au or, alternatively by filling in and submitting the [Hydrographic Notes](#) forms located on the web site – www.hydro.gov.au), immediately on the discovery of new dangers or suspected dangers to navigation. For changes or defects in aids to navigation notify AusSAR (Fax 02-6230 6868 or email rccaus@amsa.gov.au).

AUTHORISED USE

Copies of Australian notices are available free of charge from the Australian Hydrographic Office (AHO) website (www.hydro.gov.au) and through the eNotices (email) service (www.hydro.gov.au/enotices/enotices.htm).

Individual Notices may be copied for the purpose of inserting Notice substance on official charts and publications. Paper copies may be printed by chart agents and distributed to customers on a cost recovery basis. Participating chart agents are listed on the AHO website as providing a 'Paper Notices to Mariners' service (www.hydro.gov.au/prodserv/agents-list.htm). Copies of the notices may not be sold for profit without prior written agreement.

NUMERICAL INDEX OF NOTICES TO MARINERS

Edition No 17

Notices	Aus Chart, INT Chart, ENC Cell, AHP, BA Pubs
628	Aus 167
629	Aus 607, 720, 721, 4603, 4708, INT 603, 708, PNG 680
630	Aus 200, 807, 808
631	Aus 200
632	Aus 808
633	Aus 192
634	Aus 292
635	Aus 815, 817
636	Aus 236
637	Aus 265
638	Aus 262, 830
639	Aus 294, 296, 301, 700
640	Aus 22, 309, 310
641	Aus 743, 744
642	Aus 55, 326, 327
643	Aus 754
644	Aus 64, 328, 743, 744, 4723, INT 723
645	Aus 143
646	Aus 155
647(T)	Aus 249, 823
648(T)	Aus 249, 822, 823
649(T)	Aus 4
650(T)	Aus 25, 26, 309
651(T)	Aus 26
652(T)	Aus 115
653(T)	Aus 118
654(T)	Aus 65, 327, 742
655(T)	Aus 328, 329, 744, 745, 4060, 4070, 4071, 4708, 4723, INT 60, 70, 71, 708, 723
656(T)	Aus 120
657(P)	Aus 780
658(P)	Aus 136, 778
659(T)	Aus 357, 487, 802
660(T)	Aus 173, 795

NUMERICAL INDEX OF CHARTS AFFECTED

Edition No 17

Aus Chart	Notices
Aus 4	649(T)
Aus 22	640
Aus 25	650(T)
Aus 26	650(T), 651(T)
Aus 55	642
Aus 64	644
Aus 65	654(T)
Aus 115	652(T)
Aus 118	653(T)
Aus 120	656(T)
Aus 136	658(P)
Aus 143	645
Aus 155	646
Aus 167	628
Aus 173	660(T)
Aus 192	633
Aus 200	630, 631
Aus 236	636
Aus 249	647(T), 648(T)
Aus 262	638
Aus 265	637
Aus 292	634
Aus 294	639
Aus 296	639
Aus 301	639
Aus 309	640, 650(T)
Aus 310	640
Aus 326	642
Aus 327	642, 654(T)
Aus 328	644, 655(T)
Aus 329	655(T)
Aus 357	659(T)
Aus 487	659(T)
Aus 607	629
Aus 700	639
Aus 720	629
Aus 721	629
Aus 742	654(T)
Aus 743	641, 644
Aus 744	641, 644, 655(T)
Aus 745	655(T)
Aus 754	643
Aus 778	658(P)
Aus 780	657(P)
Aus 795	660(T)
Aus 802	659(T)
Aus 807	630
Aus 808	630, 632
Aus 815	635
Aus 817	635
Aus 822	648(T)
Aus 823	647(T), 648(T)
Aus 830	638
Aus 4060	655(T)

Aus Chart	Notices
Aus 4070	655(T)
Aus 4071	655(T)
Aus 4603	629
Aus 4708	629, 655(T)
Aus 4723	644, 655(T)
PNG 680	629

INT Chart	Notices
INT 60	655(T)
INT 70	655(T)
INT 71	655(T)
INT 603	629
INT 708	629, 655(T)
INT 723	644, 655(T)

628 AUSTRALIA - Products - New Charts, New Editions, Withdrawn Charts

Australian Hydrographic Office

New Charts

<i>Chart</i>	<i>Title and Geographical limits</i>	<i>Scale</i>	<i>Publication Date</i>	<i>Remarks</i>
NIL				

New Electronic Navigation Chart (Aus ENC)

<i>Cell Name</i>	<i>Title</i>	<i>Publication Date</i>	<i>Remarks</i>
NIL			

New Editions and Withdrawn Charts

<i>Chart</i>	<i>Title</i>	<i>Scale</i>	<i>Publication Date</i>	<i>Remarks</i>
Aus 167 (Edition 3)	Australia - Tasmania - Port Dalrymple Plan: Bell Bay	1:25 000 1:10 000	16 August 2024	New edition with general updating throughout; including new bathymetric data. Chart Aus 167 Edition 2 dated 24 January 2020 is now superseded and must be withdrawn from use.

Chart permanently withdrawn

Charts listed above as withdrawn no longer meet chart carriage requirements and should be marked as "superseded" and replaced with the new chart/ new edition listed prior to passage through the area covered by the new chart.

When placing orders with a chart agent between notice of forthcoming edition and its publication, mariners should advise whether their order pertains to the current edition or the new edition.

For further details refer to the AHO website at www.hydro.gov.au for new edition and new chart stock arrival information.

629 AUSTRALIA - Products - New Charts and New Editions to be published shortly

Australian Hydrographic Office

New Charts to be published shortly

Chart	Title	Scale	Remarks
NIL			

New Editions to be published shortly

Chart	Title	Scale	Remarks
Aus 607	Indian Ocean - Cocos (Keeling) Islands - South Keeling Islands Plan: North Keeling Island	1:25 000 1:25 000	New edition with general updating throughout; including new ESSA limits.
PNG 680	Papua New Guinea - New Britain - Approaches to Blanche Bay Plan: Simpson and Matupit Harbour	1:75 000 1:12 500	New edition with general updating throughout; including new bathymetric data.
Aus 720	Australia - North Coast - Northern Territory - Van Diemen Gulf	1:150 000	New edition with general updating throughout; including new bathymetric data.
Aus 721	Australia - North Coast - Northern Territory - Port Essington to Snake Bay	1:150 000	New edition with general updating throughout; including new bathymetric data.
Aus 4603 (INT 603)	Australia - North Coast and adjacent waters	1:3 500 000	New edition with general updating throughout; including new bathymetric data, pipelines and ESSA limits.
Aus 4708 (INT 708)	Australia - West Coast	1:3 500 000	New edition with general updating throughout; including new bathymetric data, pipelines and ESSA limits.

630 AUSTRALIA - NEW SOUTH WALES - Bendalong to Port Jackson - Unexploded ordnance

Australian Hydrographic Office

Aus 200 [544/2024]

Insert	magenta dashed circle with radius 0.05M, with magenta legend <i>Unexploded Ordnance (see Note)</i> , centred on	33° 50'.489 S	151° 16'.386 E
--------	--	---------------	----------------

Aus 807 [990/2023]

Insert	magenta dashed circle with radius 0.5M, with magenta legend <i>Unexploded Ordnance (see Note)</i> , centred on	35° 11'.89 S	150° 36'.91 E
	magenta dashed circle with radius 0.5M, with magenta legend <i>Unexploded Ordnance (see Note)</i> , centred on	35° 15'.11 S	150° 40'.24 E
	magenta dashed circle with radius 0.5M, with magenta legend <i>Unexploded Ordnance (see Note)</i> , centred on	35° 15'.39 S	150° 36'.91 E

Aus 808 [269/2024]

Insert	magenta dashed circle with radius 0.5M, with magenta legend <i>Unexploded Ordnance (see Note)</i> , centred on	34° 09'.89 S	151° 13'.91 E
	magenta dashed circle with radius 0.5M, with magenta legend <i>Unexploded Ordnance (see Note)</i> , centred on	34° 17'.89 S	151° 13'.91 E
	magenta dashed circle with radius 0.5M, with magenta legend <i>Unexploded Ordnance (see Note)</i> , centred on	34° 49'.89 S	150° 57'.91 E
	magenta dashed circle with radius 0.5M, with magenta legend <i>Unexploded Ordnance (see Note)</i> , centred on	34° 51'.89 S	150° 56'.91 E
	magenta dashed circle with radius 0.5M, with magenta legend <i>Unexploded Ordnance (see Note)</i> , centred on	34° 53'.09 S	150° 55'.91 E

631 AUSTRALIA - NEW SOUTH WALES - Port Jackson - Berrys Bay - Wreck

Port Authority of New South Wales

Aus 200 [630/2024]

Delete	depth, 2m, and enclosing danger circle and legend, Wk	33° 50'.78 S	151° 12'.09 E
--------	---	--------------	---------------

632 AUSTRALIA - NEW SOUTH WALES - Shellharbour - Coastline, depths; light

Australian Hydrographic Office , Advisian

Aus 808 [630/2024]

Insert	accompanying block	34° 33'.0 S	150° 49'.5 E
--------	------------------------------------	-------------	--------------

633 AUSTRALIA - NEW SOUTH WALES - Twofold Bay - East Boyd Bay to Snug Cove - Mooring buoys

Transport for NSW

Aus 192 [545/2024]

Amend	structure colour to <i>Bu</i>	37° 04'.36 S	149° 53'.99 E
-------	-------------------------------	--------------	---------------

Aus 192 (Eden) [545/2024]

Insert	cylindrical mooring buoy	37° 04'.328 S	149° 54'.294 E
	cylindrical mooring buoy	37° 04'.336 S	149° 53'.958 E
	blue cylindrical mooring buoy	37° 04'.342 S	149° 54'.258 E
	cylindrical mooring buoy	37° 04'.347 S	149° 54'.325 E
	cylindrical mooring buoy	37° 04'.359 S	149° 53'.922 E
	cylindrical mooring buoy	37° 04'.360 S	149° 54'.294 E
	cylindrical mooring buoy	37° 04'.373 S	149° 54'.264 E

Amend	structure colour to <i>Bu</i>	37° 04'.36 S	149° 53'.99 E
-------	-------------------------------	--------------	---------------

Aus 192 (East Boyd Bay Wharves) [545/2024]

Insert	blue conical mooring buoy	37° 06'.590 S	149° 55'.540 E
	cylindrical mooring buoy	37° 06'.598 S	149° 55'.477 E

Delete	mooring buoy	37° 06'.59 S	149° 55'.50 E
--------	--------------	--------------	---------------

634 AUSTRALIA - QUEENSLAND - Adolphus Channel - Depths

Precision Hydrographic Services

Aus 292 [51/2024]Replace depth, 14₂m, with depth, 13₄m

10° 45'.0 S

142° 41'.3 E

635 AUSTRALIA - QUEENSLAND - Double Island Point - Light buoy

Maritime Safety Queensland Notice 403/2024

Aus 815 [589/2024]Insert special conical light buoy, *Fl. Y. 4s*, without topmark

25° 56'.33 S

153° 10'.19 E

Aus 817 [585/2024]Insert special conical light buoy, *Fl. Y. 4s*, without topmark

25° 56'.33 S

153° 10'.19 E

636 AUSTRALIA - QUEENSLAND - Moreton Bay - Rous Channel - Nav aids

Maritime Safety Queensland Notice 394/2024

Aus 236 [588/2024]Insert [accompanying block](#)

27° 24'.7 S

153° 20'.0 E

637 AUSTRALIA - QUEENSLAND - Port Alma - Kazatch Point - Depths; nav aids

Maritime Safety Queensland

Aus 265 [512/2024]Insert [accompanying block A](#)

23° 34'.4 S

150° 52'.6 E

Aus 265 (Port Alma) [512/2024]Insert [accompanying block B](#)

23° 34'.3 S

150° 52'.7 E

638 AUSTRALIA - QUEENSLAND - Yorkeys Knob - Lights; bearing; infrastructure*Former Notice - 536(T)/2022 is cancelled*

Maritime Safety Queensland

Aus 262 [207/2024]Insert [accompanying block](#)

16° 47'.6 S

145° 43'.5 E

Aus 830 [270/2024]Amend legend to 222.5°
light to *Is. 2s*

16° 46'.5 S

145° 44'.2 E

16° 48'.1 S

145° 42'.9 E

639 AUSTRALIA - TORRES STRAIT - Booby Island - Light

Australian Maritime Safety Authority Final ATH 12/2024

Aus 294 [429/2024]

Amend light range to 19M

10° 36'.3 S

141° 54'.7 E

Aus 296 [958/2023]

Amend light range to 19M

10° 36'.25 S

141° 54'.68 E

Aus 301 [241/2024]

Amend light range to 19M

10° 36'.3 S

141° 54'.7 E

Aus 700 [241/2024]

Amend light range to 19M

10° 36'.3 S

141° 54'.7 E

640 AUSTRALIA - NORTHERN TERRITORY - Bathurst Island - Pipeline westwards

Former Notice - 891(T)/2023 is cancelled

Santos

Note: position of existing chart notes may vary on certain charts.

Aus 22 [259/2022]

Insert	supply pipeline with magenta legend, Gas (see Note), between	11° 12'.30 S	129° 59'.53 E
		11° 15'.38 S	129° 58'.98 E
		11° 22'.36 S	129° 58'.11 E
		11° 30'.00 S	129° 57'.85 E
	accompanying chart note, OIL AND GAS PIPELINES	11° 17'.38 S	130° 27'.46 E

Aus 309 [515/2024]

Insert	supply pipeline with magenta legend, Gas (see Note), between	10° 39'.00 S	130° 16'.48 E
		10° 45'.03 S	130° 16'.06 E
		10° 51'.21 S	130° 13'.07 E
		11° 01'.06 S	130° 05'.53 E
		11° 11'.22 S	129° 59'.73 E
		11° 15'.38 S	129° 58'.98 E
		11° 22'.36 S	129° 58'.11 E
		11° 30'.32 S	129° 57'.84 E
		11° 42'.49 S	129° 57'.91 E
		11° 43'.66 S	129° 57'.49 E
		11° 44'.98 S	129° 56'.70 E
		11° 47'.29 S	129° 56'.83 E
		11° 51'.70 S	129° 55'.52 E
		11° 53'.55 S	129° 54'.64 E
		12° 01'.51 S	129° 54'.47 E

Aus 310 [472/2024]

Insert	supply pipeline with magenta legend, Gas (see Note), between	9° 49'.25 S	130° 15'.80 E
		9° 49'.86 S	130° 13'.16 E
		9° 50'.88 S	130° 11'.47 E
		9° 52'.15 S	130° 10'.64 E
		10° 01'.22 S	130° 12'.13 E
		10° 06'.47 S	130° 14'.52 E
		10° 22'.17 S	130° 17'.37 E
		10° 31'.79 S	130° 16'.99 E
		10° 45'.03 S	130° 16'.06 E
		10° 51'.21 S	130° 13'.07 E
		11° 01'.06 S	130° 05'.53 E
		11° 11'.22 S	129° 59'.73 E
		11° 13'.00 S	129° 59'.41 E
	accompanying chart note, OIL AND GAS PIPELINES	9° 12'.64 S	130° 36'.25 E

641 AUSTRALIA - WESTERN AUSTRALIA - Bessieres Island - Unexploded ordnance

Australian Hydrographic Office

Aus 743 [519/2024]

Insert	magenta dashed circle with radius 0.5M, centred on	21° 28'.92 S	114° 40'.18 E
Delete	magenta dashed circle, centred on	21° 28'.9 S	114° 40'.2 E

Aus 744 [519/2024]

Insert	magenta dashed circle with radius 0.5M, centred on	21° 28'.92 S	114° 40'.18 E
Delete	magenta dashed circle, centred on	21° 28'.9 S	114° 40'.2 E

642 AUSTRALIA - WESTERN AUSTRALIA - Delambre Reef - Depth eastwards

Discovery Marine

Aus 55 [433/2023]Replace depth, 7₃m, with depth, 5m, enclosed by contour 20° 26'.1 S 117° 17'.0 E**Aus 326 [356/2024]**Replace depth, 7₃m, with depth, 5m 20° 26'.1 S 117° 17'.0 E**Aus 327 [354/2024]**Replace depth, 7₃m, with depth, 5m 20° 26'.1 S 117° 17'.0 E**643 AUSTRALIA - WESTERN AUSTRALIA - Rottnest Island - Unexploded ordnance northwestwards**

Australian Hydrographic Office

Aus 754 [473/2024]Insert magenta dashed circle with radius 0.25M, centred on 31° 45'.00 S 115° 14'.80 E
magenta dashed circle with radius 0.25M, centred on 31° 47'.40 S 115° 16'.10 E**644 AUSTRALIA - WESTERN AUSTRALIA - Thevenard Island - Lit platforms; obstruction**

Chevron Australia

Aus 64 [519/2024]Delete lit platform and legend, SKATE Mo(U)15s 21° 35'.8 S 114° 58'.8 E
lit platform and legend, ROLLER B Mo(U)15s 21° 38'.2 S 114° 55'.4 E**Aus 328 [519/2024]**Insert depth, 5m, enclosed by danger circle with legend, *Obstn* 21° 38'.45 S 114° 54'.39 EDelete lit platform and legend, Mo(U)15s 21° 35'.8 S 114° 58'.8 E
lit platform and legend, Mo(U)15s 21° 38'.2 S 114° 55'.4 E
lit platform and legend, Mo(U)15s 21° 38'.5 S 114° 54'.4 E**Aus 743 [641/2024]**Insert depth, 5m, enclosed by danger circle with legend, *Obstn* 21° 38'.45 S 114° 54'.39 EDelete lit platform and legend, SKATE Mo(U)15s 21° 35'.8 S 114° 58'.8 E
lit platform and legend, ROLLER B Mo(U)15s 21° 38'.2 S 114° 55'.4 E
lit platform and legend, ROLLER A Mo(U)15s 21° 38'.5 S 114° 54'.4 E**Aus 744 [641/2024]**Insert depth, 5m, enclosed by danger circle with legend, *Obstn* 21° 38'.45 S 114° 54'.39 EDelete lit platform and legend, SKATE Mo(U)15s 21° 35'.8 S 114° 58'.8 E
lit platform and legend, ROLLER B Mo(U)15s 21° 38'.2 S 114° 55'.4 E
lit platform and legend, ROLLER A Mo(U)15s 21° 38'.5 S 114° 54'.4 E**Aus 4723 (INT 723) [NE 5/7/2024]**Delete lit platform 21° 35'.8 S 114° 58'.8 E
lit platform 21° 38'.5 S 114° 54'.4 E**645 AUSTRALIA - VICTORIA - Port Phillip - Unexploded ordnance**

Australian Hydrographic Office

Aus 143 [474/2024]Insert magenta dashed circle with radius 0.25M, centred on 38° 08'.81 S 144° 50'.66 E
magenta dashed circle with radius 0.5M, centred on 38° 11'.49 S 144° 52'.00 E
magenta dashed circle with radius 0.25M, centred on 38° 13'.88 S 144° 49'.73 E

646 AUSTRALIA - VICTORIA - Port Phillip - Sandringham - Light buoys

Former Notice - 381(T)/2024 is cancelled

Parks Victoria Notice 316/2024

Aus 155 [521/2024]

Replace	light buoy with special conical light buoy, <i>Fl(4)Y.10s SYC7</i> , without topmark	37° 55'.86 S	144° 59'.00 E
	light buoy with special conical light buoy, <i>Fl(4)Y.10s SYC3</i> , without topmark	37° 56'.24 S	144° 59'.25 E
	light buoy with special conical light buoy, <i>Fl(4)Y.10s SYC2</i> , without topmark	37° 56'.61 S	144° 57'.98 E
	light buoy with special conical light buoy, <i>Fl(4)Y.10s SYC4</i> , without topmark	37° 56'.81 S	144° 59'.40 E
	light buoy with special conical light buoy, <i>Fl(4)Y.10s SYC1</i> , without topmark	37° 57'.81 S	144° 58'.88 E
	light buoy with special conical light buoy, <i>Fl(4)Y.10s SYC5</i> , without topmark	37° 58'.81 S	144° 58'.38 E
Delete	topmark	37° 56'.70 S	144° 57'.08 E
	topmark	37° 56'.76 S	144° 59'.65 E

647(T)/2024 AUSTRALIA - QUEENSLAND - Hay Point - Obstruction removed

Former Notice - 598(T)/2024 is cancelled
Maritime Safety Queensland

Cancel this notice on receipt.

Chart formerly affected - Aus 249 - Aus 823

648(T)/2024 AUSTRALIA - QUEENSLAND - Torch Shoal to Mackay - Scientific instruments eastwards

Maritime Safety Queensland Notice 404(T)/2024

Special light buoys, *Fl. Y.*, exist in the following positions:

21° 09'.27 S 149° 24'.11 E

21° 17'.31 S 149° 26'.00 E

21° 31'.76 S 149° 31'.28 E

21° 41'.48 S 149° 33'.60 E.

Chart temporarily affected - Aus 249 - Aus 822 - Aus 823

649(T)/2024 AUSTRALIA - QUEENSLAND - Weipa - Dredging operations; survey operations completed

Former Notice - 364(T)/2024 is cancelled
Maritime Safety Queensland

Cancel this notice on receipt.

Chart formerly affected - Aus 4

650(T)/2024 AUSTRALIA - NORTHERN TERRITORY - Darwin - Survey operations; trenching operations completed

Former Notice - 410(T)/2024 is cancelled
Northern Territory Government

Cancel this notice on receipt.

Chart formerly affected - Aus 25 - Aus 26 - Aus 309

651(T)/2024 AUSTRALIA - NORTHERN TERRITORY - Darwin - Survey operations; dredging operations

Northern Territory Government Notice 57/2024

Vessel *Edendrach* is conducting survey operations in an area bounded by the following positions:

12° 30'.23 S 130° 53'.46 E

12° 30'.22 S 130° 54'.29 E

12° 29'.36 S 130° 54'.28 E

12° 29'.36 S 130° 53'.46 E.

Dredging operations are also in progress in the area.

The vessel will monitor VHF Ch 10.

Mariners are advised to navigate with caution in the area.

Chart temporarily affected - Aus 26

652(T)/2024 AUSTRALIA - WESTERN AUSTRALIA - Bunbury - Dredging operations; survey operations
Department of Transport WA Notice 6148/2024

The dredge *Modi R*, survey vessel *Rind R* and support vessels are conducting dredging and survey operations in the Port of Bunbury (33° 18'.67 S 115° 39'.13 E).

Vessels will display appropriate lights and shapes and will monitor VHF Ch 12 and Ch 16.

Mariners are requested to contact the operators before navigating past working vessels.

Mariners are advised to navigate with caution in the area.

Chart temporarily affected - Aus 115

653(T)/2024 AUSTRALIA - WESTERN AUSTRALIA - King George Sound - Gio Batta Patch - Light buoy restored
Former Notice - 30(T)/2024 is cancelled
Department of Transport WA

Cancel this notice on receipt.

Chart formerly affected - Aus 118

654(T)/2024 AUSTRALIA - WESTERN AUSTRALIA - Lowendal Islands - Abutilon Island - Well plug and abandonment works complete
Former Notice - 498(T)/2024 is cancelled
MODU *Valaris 107*

Cancel this notice on receipt.

Chart formerly affected - Aus 65 - Aus 327 - Aus 742

655(T)/2024 AUSTRALIA - WESTERN AUSTRALIA - North West Cape - Light unlit
Australian Maritime Safety Authority Auscoast Warning 216/2024

The light, *Fl. 10s 129m 21M* (21° 48'.37 S 114° 09'.61 E), is unlit.

Chart temporarily affected - Aus 328 - Aus 329 - Aus 744 - Aus 745 - Aus 4060 (INT 60) - Aus 4070 (INT 70) - Aus 4071 (INT 71) - Aus 4708 (INT 708) - Aus 4723 (INT 723)

656(T)/2024 AUSTRALIA - SOUTH AUSTRALIA - Decres Bay - Light beacons unlit
Department for Infrastructure and Transport SA Notice 48(T)/2024

Light beacons, *Fl. G. 4s* (32° 12'.39 S 133° 40'.79 E) and *Fl. 3s 5M* (32° 12'.48 S 133° 41'.93 E), are unlit.

Chart temporarily affected - Aus 120

657(P)/2024 AUSTRALIA - SOUTH AUSTRALIA - Kangaroo Island - Kingscote - Shoaling
FPH Group

Latest survey indicates shoaler depths than those charted may exist in the vicinity of position 35° 37'.95 S 137° 38'.04E.

Mariners are advised to navigate with caution in the area.

Electronic Navigation Charts (ENCs) and Paper Charts will be updated in due course.

Chart which will be affected - Aus 780

658(P)/2024 AUSTRALIA - SOUTH AUSTRALIA - Spencer Gulf - Point Lowly - Shoaling

Former Notice - 624(P)/2024 is cancelled
Office of Hydrogen Power South Australia

Latest survey indicates shoaler depths than those charted may exist in an area bounded by the following positions:

32° 56'.16 S 137° 45'.49E
32° 55'.77 S 137° 47'.76E
32° 58'.67 S 137° 47'.86E
32° 58'.89 S 137° 46'.87E.

Mariners are advised to navigate with caution in the area.

Charts will be updated in due course.

Chart which will be affected - Aus 136 - Aus 778**659(T)/2024 AUSTRALIA - VICTORIA - Corner Inlet - Scientific instruments eastwards**

Former Notice - 169(T)/2024 is cancelled
RPS Group

Subsurface scientific instruments, 20m below the surface, exist in the following positions:

38° 45'.19 S 147° 05'.63 E
38° 50'.96 S 147° 17'.54 E
38° 55'.81 S 146° 50'.01 E
39° 03'.61 S 147° 39'.05 E
39° 21'.71 S 146° 58'.05 E.

Chart temporarily affected - Aus 357 - Aus 487 - Aus 802**660(T)/2024 AUSTRALIA - TASMANIA - Huon River - Deep Bay - Wreck salvaged**

Former Notice - 730(T)/2023 is cancelled
Marine and Safety Tasmania Notice M256(T)/2024

Cancel this notice on receipt.

Chart formerly affected - Aus 173 - Aus 795

II

HYDROGRAPHIC REPORTS

NIL

To accompany Australian Notice to Mariners 640/2024

OIL AND GAS PIPELINES

Pipelines carry flammable oil or gas at high pressure. A damaged pipeline could cause an explosion, resulting in damage to a vessel or the environment. Pipelines may pass over bottom undulations, be buried or protrude above the seabed reducing charted depths. Vessels should avoid anchoring, trawling or conducting other underwater operations in the vicinity of the pipelines.

Note for chart Aus 22

To accompany Australian Notice to Mariners 640/2024

OIL AND GAS PIPELINES

Pipelines carry flammable oil or gas at high pressure. A damaged pipeline could cause an explosion, resulting in damage to a vessel or the environment. Pipelines may pass over bottom undulations, be buried or protrude above the seabed reducing charted depths. Vessels should avoid anchoring, trawling or conducting other underwater operations in the vicinity of the pipelines.

Note for chart Aus 310

To accompany Australian Notice to Mariners 632/2024

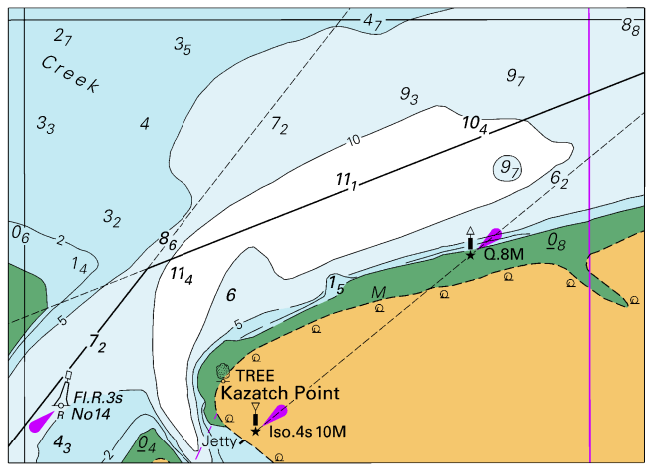


Block for chart Aus 808

© Commonwealth of Australia 2024

(164.2 x 96.1mm)

To accompany Australian Notice to Mariners 637/2024

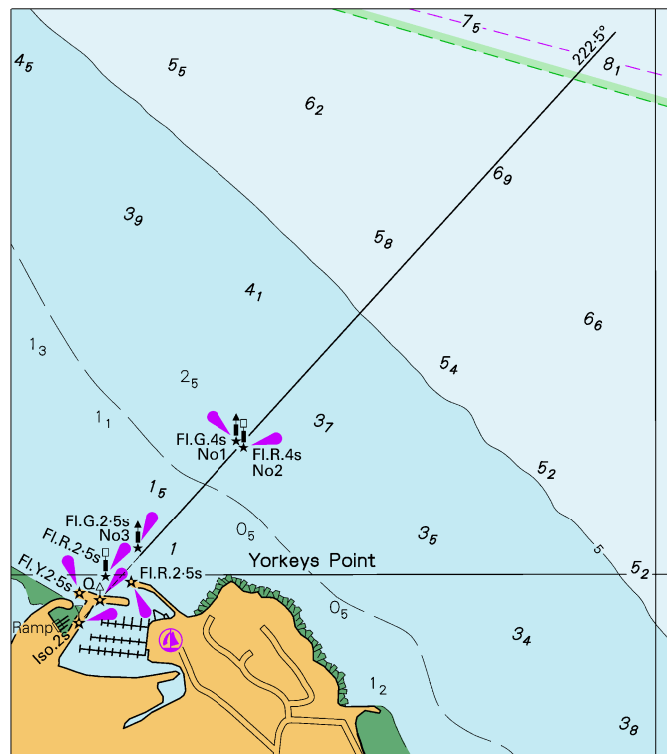


Block A for chart Aus 265

(84:1 x 60:2mm)

© Commonwealth of Australia 2024

To accompany Australian Notice to Mariners 638/2024



Block for chart Aus 262

(87.9 x 98.9mm)

© Commonwealth of Australia 2024