



2 August 2024

Edition 16

AUSTRALIAN NOTICES TO MARINERS

Notices 581 - 627

Published fortnightly by the Australian Hydrographic Office



Australian Notices to Mariners are the authority for correcting charts and publications published by the Australian Hydrographic Office covering Australia, Papua New Guinea, Solomon Islands, Australian Antarctic Territory and Timor-Leste.

Commodore R.L. PHILLIPS RAN
Hydrographer of Australia

SECTIONS.

- I. **Australian Notices to Mariners, including blocks and notes.**
- II. **Hydrographic Reports.**

SUPPLEMENTS.

- I. **Tracings**
 - II. **Cumulative List of Australian Notices to Mariners.**
 - III. **Cumulative List of Temporary and Preliminary Australian Notices to Mariners.**
 - IV. **Temporary and Preliminary Notices in force.**
-
-

© Commonwealth of Australia 2024

This work is copyright. Apart from any use permitted under the Copyright Act 1968, no part may be reproduced by any process, adapted, communicated or commercially exploited without prior written permission from The Commonwealth represented by the Australian Hydrographic Office.

IMPORTANT NOTICE

This edition of Notices to Mariners includes all significant information affecting AHO products which the AHO has become aware of since the last edition. All reasonable efforts have been made to ensure the accuracy and completeness of the information, including third party information, on which these updates are based. The AHO regards third parties from which it receives information as reliable, however the AHO cannot verify all such information and errors may therefore exist. The AHO does not accept liability for errors in third party information.

GENERAL INSTRUCTIONS

The substance of these notices should be inserted on the charts affected.

Bearings are referred to the true compass and are reckoned clockwise from North; those relating to lights are given as seen by an observer from seaward.

Positions quoted in notices relate to WGS84 which is the horizontal datum for all charts produced by the Australian Hydrographic Office.

The range quoted for a light is its nominal range.

Depths are with reference to the chart datum of each chart. Heights are above mean high water springs or mean higher high water, as appropriate.

The capital letter (P) or (T) after the number of any notice denotes a preliminary or temporary notice respectively, which are contained separately at the end of the permanent notices.

REPORTING OF DANGERS

Mariners are particularly requested to notify the AUSTRALIAN HYDROGRAPHIC OFFICE, Locked Bag 8801 Wollongong, NSW 2500 (e-mail datacentre@hydro.gov.au or, alternatively by filling in and submitting the [Hydrographic Notes](#) forms located on the web site – www.hydro.gov.au), immediately on the discovery of new dangers or suspected dangers to navigation. For changes or defects in aids to navigation notify AusSAR (Fax 02-6230 6868 or email rccaus@amsa.gov.au).

AUTHORISED USE

Copies of Australian notices are available free of charge from the Australian Hydrographic Office (AHO) website (www.hydro.gov.au) and through the eNotices (email) service (www.hydro.gov.au/enotices/enotices.htm).

Individual Notices may be copied for the purpose of inserting Notice substance on official charts and publications. Paper copies may be printed by chart agents and distributed to customers on a cost recovery basis. Participating chart agents are listed on the AHO website as providing a 'Paper Notices to Mariners' service (www.hydro.gov.au/prodserv/agents-list.htm). Copies of the notices may not be sold for profit without prior written agreement.

NUMERICAL INDEX OF NOTICES TO MARINERS

Edition No 16

Notices	Aus Chart, INT Chart, ENC Cell, AHP, BA Pubs
581	Aus 790
582	Aus 167
583	Aus 195
584	Aus 821
585	Aus 815, 817
586	Aus 236
587	Aus 236
588	Aus 236
589	Aus 815
590	Aus 117
591	Aus 81
592	Aus 597, 4074, INT 7746, 74
593	Aus 4074, INT 74
594	Aus 181
595	Aus 151
596(T)	Aus 256, 827
597(T)	Aus 817
598(T)	Aus 249, 823
599(T)	Aus 258
600(T)	Aus 236, 814, 815
601(T)	Aus 292, 293, 296, 700, 839, 841
602(T)	Aus 256
603(T)	Aus 839
604(T)	Aus 700, 839, 842
605(T)	Aus 25, 309
606(T)	Aus 25
607(T)	Aus 25, 26
608(T)	Aus 25
609(T)	Aus 26
610(T)	Aus 26
611(T)	Aus 309, 310, 311
612(T)	Aus 319, 320
613(T)	Aus 327, 742
614(T)	Aus 319
615(T)	Aus 117, 754
616(T)	Aus 118
617(T)	Aus 327, 328
618(T)	Aus 328, 329
619(P)	Aus 335, 755
620(T)	Aus 118
621(T)	Aus 336
622(T)	Aus 130, 485, 781
623(T)	Aus 134
624(P)	Aus 136, 778
625(T)	Aus 151
626(T)	Aus 151
627(T)	Aus 487, 790

NUMERICAL INDEX OF CHARTS AFFECTED

Edition No 16

Aus Chart	Notices	INT Chart	Notices
Aus 25	605(T), 606(T), 607(T), 608(T)	INT 7746	592
Aus 26	607(T), 609(T), 610(T)	INT 74	592, 593
Aus 81	591		
Aus 117	590, 615(T)		
Aus 118	616(T), 620(T)		
Aus 130	622(T)		
Aus 134	623(T)		
Aus 136	624(P)		
Aus 151	595, 625(T), 626(T)		
Aus 167	582		
Aus 181	594		
Aus 195	583		
Aus 236	586, 587, 588, 600(T)		
Aus 249	598(T)		
Aus 256	596(T), 602(T)		
Aus 258	599(T)		
Aus 292	601(T)		
Aus 293	601(T)		
Aus 296	601(T)		
Aus 309	605(T), 611(T)		
Aus 310	611(T)		
Aus 311	611(T)		
Aus 319	612(T), 614(T)		
Aus 320	612(T)		
Aus 327	613(T), 617(T)		
Aus 328	617(T), 618(T)		
Aus 329	618(T)		
Aus 335	619(P)		
Aus 336	621(T)		
Aus 485	622(T)		
Aus 487	627(T)		
Aus 597	592		
Aus 700	601(T), 604(T)		
Aus 742	613(T)		
Aus 754	615(T)		
Aus 755	619(P)		
Aus 778	624(P)		
Aus 781	622(T)		
Aus 790	581, 627(T)		
Aus 814	600(T)		
Aus 815	585, 589, 600(T)		
Aus 817	585, 597(T)		
Aus 821	584		
Aus 823	598(T)		
Aus 827	596(T)		
Aus 839	601(T), 603(T), 604(T)		
Aus 841	601(T)		
Aus 842	604(T)		
Aus 4074	592, 593		

581 AUSTRALIA - Products - New Charts, New Editions, Withdrawn Charts

Australian Hydrographic Office , UKHO

New Charts

<i>Chart</i>	<i>Title and Geographical limits</i>	<i>Scale</i>	<i>Publication Date</i>	<i>Remarks</i>
NIL				

New Electronic Navigation Chart (Aus ENC)

<i>Cell Name</i>	<i>Title</i>	<i>Publication Date</i>	<i>Remarks</i>
NIL			

New Editions and Withdrawn Charts

<i>Chart</i>	<i>Title</i>	<i>Scale</i>	<i>Publication Date</i>	<i>Remarks</i>
Aus 790 (Edition 2)	Australia - Tasmania - Stokes Point to Rocky Cape	1:150 000	2 August 2024	New edition with general updating throughout; including new bathymetric data. Chart Aus 790 Edition 1 dated 12 November 2004 is now superseded and must be withdrawn from use.

Admiralty publication

<i>NP No</i>	<i>Title</i>	<i>Date</i>	<i>Remarks</i>
NP204	ADMIRALTY Tide Tables South Pacific Ocean (Including Tidal Stream Tables) Volume 4, 2025 Edition	1/8/2024	New Edition.
NP285	ADMIRALTY List of Radio Signals Global Maritime Distress and Safety System (GMDSS) Volume NP285, 5th Edition (2024)	8/8/2024	The 4th Edition (2023) is cancelled.

Chart permanently withdrawn

Charts listed above as withdrawn no longer meet chart carriage requirements and should be marked as "superseded" and replaced with the new chart/ new edition listed prior to passage through the area covered by the new chart.

When placing orders with a chart agent between notice of forthcoming edition and its publication, mariners should advise whether their order pertains to the current edition or the new edition.

For further details refer to the AHO website at www.hydro.gov.au for new edition and new chart stock arrival information.

582 AUSTRALIA - Products - New Charts and New Editions to be published shortly

Australian Hydrographic Office

New Charts to be published shortly

<i>Chart</i>	<i>Title</i>	<i>Scale</i>	<i>Remarks</i>
NIL			

New Editions to be published shortly

<i>Chart</i>	<i>Title</i>	<i>Scale</i>	<i>Remarks</i>
Aus 167	Australia - Tasmania - Port Dalrymple Plan: Bell Bay	1:25 000 1:10 000	New edition with general updating throughout; including new bathymetric data.

583 AUSTRALIA - NEW SOUTH WALES - Port Kembla - Light

Port Authority of New South Wales

Aus 195 [269/2024]Amend light to *F.G & F.R & F.Bu* 34° 27'.39 S 150° 53'.10 E**584 AUSTRALIA - QUEENSLAND - Hydrographers Passage - Creal Reef - Light**

Australian Maritime Safety Authority Final ATH 10/2024

Aus 821 [1041/2023]Amend light range to *19M* 20° 31'.9 S 150° 22'.7 E**585 AUSTRALIA - QUEENSLAND - Inskip Point - Light**

Maritime Safety Queensland Notice 362/2024, 363/2024

Aus 815 [511/2024]Insert light, *Dir WRG* 25° 49'.03 S 153° 04'.31 EAmend light to *Fl.3s 9M & Dir WRG* 25° 47'.0 S 153° 04'.7 EDelete light, *Iso.Bu & Q.Bu* 25° 48'.7 S 153° 03'.8 E
dashed and continuous line with legend, 238°, emanating from light 25° 48'.7 S 153° 03'.8 E**Aus 817 [510/2024]**Insert light, *Dir WRG* 25° 49'.03 S 153° 04'.31 EAmend light to *Fl.3s 9M & Dir WRG* 25° 47'.0 S 153° 04'.7 EDelete light, *Iso.Bu & Q.Bu* 25° 48'.7 S 153° 03'.8 E
dashed and continuous line with legend, 238°, emanating from light 25° 48'.7 S 153° 03'.8 E**586 AUSTRALIA - QUEENSLAND - Moreton Bay - East Channel - Depths**

Maritime Safety Queensland

Aus 236 [549/2024]Insert [accompanying block](#) 27° 11'.5 S 153° 21'.5 E**587 AUSTRALIA - QUEENSLAND - Moreton Bay - Hope Banks - Depths**

Maritime Safety Queensland

Aus 236 [586/2024]Replace depth, 10₃m, with depth, 9₂m, and extend contour NE to enclose 27° 25'.0 S 153° 18'.0 E**588 AUSTRALIA - QUEENSLAND - Moreton Bay - Cabbage Tree Head - Contour**

Maritime Safety Queensland

Aus 236 [587/2024]Insert contour, between 27° 19'.81 S 153° 05'.60 E
27° 19'.64 S 153° 05'.64 E
27° 19'.63 S 153° 05'.52 EDelete contour, between 27° 19'.8 S 153° 05'.6 E
27° 19'.6 S 153° 05'.5 E**589 AUSTRALIA - QUEENSLAND - Mudjimba Island - Light buoys**

Maritime Safety Queensland Notice 365/2024

Aus 815 [585/2024]Insert conical light buoy, *Fl.Y.4s*, without topmark 26° 36'.72 S 153° 06'.77 E
conical light buoy, *Fl.Y.4s*, without topmark 26° 37'.05 S 153° 06'.83 E

590 AUSTRALIA - WESTERN AUSTRALIA - Cockburn Sound - Wrecks

Department of Transport WA Notice WA001/96/2024

Aus 117 [435/2024]

Insert	depth, 3 ₉ m, enclosed by danger circle with legend , Wk	32° 11'.650 S	115° 44'.520 E
Delete	depth, 5 ₄ m, and enclosing danger circle with legend, Wk	32° 11'.09 S	115° 44'.36 E
	depth, 3 ₉ m, and enclosing contour	32° 11'.64 S	115° 44'.53 E

591 AUSTRALIA - WESTERN AUSTRALIA - Geraldton - Champion Bay - Light beacons

Mid West Ports Notice 20/2024

Aus 81 [745/2023]

Amend	light beacon to Oc.R.3s	28° 45'.18 S	114° 34'.90 E
	light beacon to Oc.G.3s	28° 45'.29 S	114° 34'.94 E

Aus 81 (Geraldton) [745/2023]

Amend	light beacon to Oc.R.3s No8	28° 45'.18 S	114° 34'.90 E
	light beacon to Oc.G.3s No7	28° 45'.29 S	114° 34'.94 E

592 SOUTHERN OCEAN - Aurora Bank - Depth

Australian Hydrographic Office

Aus 597 (INT 7746) [NE 13/7/2018]

Insert	contour, between	52° 16'.2 S	71° 49'.5 E
		52° 15'.0 S	71° 53'.9 E
		52° 16'.1 S	71° 58'.1 E

Delete	depth, 65m, and enclosing contour	52° 16'.0 S	71° 54'.0 E
--------	-----------------------------------	-------------	-------------

Aus 4074 (INT 74) [707/2019]

Insert	depth, 146m, and extend contour E to enclose	52° 20'.2 S	72° 07'.9 E
Delete	depth, 65m	52° 16'.0 S	71° 54'.0 E

593 SOUTHERN OCEAN - Macquarie Island - Depths; ESSA limit

CSIRO

Aus 4074 (INT 74) [592/2024]

Insert	accompanying block	54° 40'.0 S	155° 50'.0 E
--------	------------------------------------	-------------	--------------

594 AUSTRALIA - VICTORIA - Port Welshpool - Lewis Channel - Light beacon

Gippsland Ports Notice 312/2024

Aus 181 [1048/2023]

Amend	light beacon to Fl.R.2s	38° 42'.4 S	146° 26'.9 E
-------	-------------------------	-------------	--------------

595 AUSTRALIA - VICTORIA - Western Port - Yaringa - Light beacon

Parks Victoria Notice 295/2024

Aus 151 [440/2024]

Replace	beacon with port lateral light beacon, Fl.R.5s No14, with topmark	38° 14'.91 S	145° 15'.86 E
---------	---	--------------	---------------

596(T)/2024 AUSTRALIA - QUEENSLAND - Cleveland Bay - Scientific instruments

Former Notice - 249(T)/2024 is cancelled
Maritime Safety Queensland Notice 387(T)/2024

Special light buoys, *Fl.Y.2-5s*, exist in the following positions:

19° 06'.45 S 146° 32'.48 E
19° 07'.34 S 146° 52'.92 E
19° 09'.32 S 146° 52'.10 E
19° 11'.81 S 146° 49'.07 E
19° 12'.79 S 146° 47'.55 E
19° 13'.58 S 146° 56'.98 E
19° 14'.80 S 146° 48'.90 E.

Mariners are advised to navigate with caution in the area.

Chart temporarily affected - Aus 256 - Aus 827

597(T)/2024 AUSTRALIA - QUEENSLAND - Great Sandy Strait - Moon Point Bank - Wreck

Former Notice - 325(T)/2024 is cancelled
Maritime Safety Queensland Notice 366(T)/2024

A stranded wreck marked by a special light buoy, *Fl.Y.2-5s*, exists in position 25° 13'.57 S 152° 59'.43 E.

Mariners are advised to navigate with caution in the area.

Chart temporarily affected - Aus 817

598(T)/2024 AUSTRALIA - QUEENSLAND - Hay Point - Obstruction

Maritime Safety Queensland Notice 382(T)/2024

A lost anchor marked by a special light buoy, *Fl.Y.3s*, exists in position 21° 11'.33 S 149° 26'.52 E.

Mariners are advised to navigate with caution in the area.

Chart temporarily affected - Aus 249 - Aus 823

599(T)/2024 AUSTRALIA - QUEENSLAND - Johnstone River - Wreck salvaged

Former Notice - 67(T)/2024 is cancelled
Maritime Safety Queensland

Cancel this notice on receipt.

Chart formerly affected - Aus 258

600(T)/2024 AUSTRALIA - QUEENSLAND - Moreton Island - Survey operations completed northwards

Former Notice - 814(T)/2023 is cancelled
Fugro

Cancel this notice on receipt.

Chart formerly affected - Aus 236 - Aus 814 - Aus 815

601(T)/2024 AUSTRALIA - QUEENSLAND - TORRES STRAIT - Alpha Rock to Varzin Passage - Light buoys altered; AIS inoperative

EGS Survey Pty Ltd

The light buoys in the following positions have been altered to *Fl.Y.3s* and the AIS is inoperative:

10° 36'.40 S 142° 30'.70 E
10° 28'.30 S 142° 26'.80 E
10° 31'.20 S 142° 10'.49 E
10° 33'.41 S 141° 59'.50 E
10° 32'.09 S 141° 51'.89 E.

Chart temporarily affected - Aus 292 - Aus 293 - Aus 296 - Aus 700 - Aus 839 - Aus 841

602(T)/2024 AUSTRALIA - QUEENSLAND - Townsville - Wreck salvaged

Former Notice - 446(T)/2024 is cancelled
Maritime Safety Queensland

Cancel this notice on receipt.

Chart formerly affected - Aus 256

603(T)/2024 AUSTRALIA - TORRES STRAIT - Meggi-Maituine Reef - Scientific instruments

Former Notice - 292(T)/2024 is cancelled
CSIRO

Cancel this notice on receipt.

Chart formerly affected - Aus 839

604(T)/2024 AUSTRALIA - TORRES STRAIT - Richardson Reef - Cook Reef - Scientific instruments

CSIRO , Maritime Safety Queensland Notice 377(T)/2024

Subsurface scientific instruments exist as follows:

<i>Position</i>	<i>Metres below surface</i>
10° 09'.57 S 143° 02'.39 E	23.2
10° 24'.34 S 141° 07'.25 E	27.6.

Chart temporarily affected - Aus 700 - Aus 839 - Aus 842

605(T)/2024 AUSTRALIA - NORTHERN TERRITORY - Beagle Gulf - South Gutter - Obstruction

MMA Offshore

An obstruction, 2m above the seabed, exists in position 12° 16'.0 S 130° 41'.0 E.

Chart temporarily affected - Aus 25 - Aus 309

606(T)/2024 AUSTRALIA - NORTHERN TERRITORY - Darwin - Middle Ground - Light buoy relit

Former Notice - 533(T)/2024 is cancelled
Northern Territory Government

Cancel this notice on receipt.

Chart formerly affected - Aus 25

607(T)/2024 AUSTRALIA - NORTHERN TERRITORY - Darwin - Scientific instruments

Northern Territory Government Notice 52(T)/2024

Special light buoys, *Fl. Y. 5s*, exist in the following positions:

12° 24'.48 S 130° 42'.28 E
12° 25'.54 S 130° 45'.46 E
12° 25'.68 S 130° 46'.11 E
12° 26'.73 S 130° 46'.29 E
12° 27'.31 S 130° 48'.66 E
12° 27'.66 S 130° 46'.14 E.

Chart temporarily affected - Aus 25 - Aus 26

608(T)/2024 AUSTRALIA - NORTHERN TERRITORY - Darwin - Charles Point Patches - Scientific instrument recovered southeastwards

Former Notice - 490(T)/2024 is cancelled
Northern Territory Government

Cancel this notice on receipt.

Chart formerly affected - Aus 25

609(T)/2024 AUSTRALIA - NORTHERN TERRITORY - Darwin - Bladin Point - Light beacon relit

Former Notice - 622(T)/2023 is cancelled
Northern Territory Government

Cancel this notice on receipt.

Chart formerly affected - Aus 26**610(T)/2024 AUSTRALIA - NORTHERN TERRITORY - Darwin - Scientific instruments**

Northern Territory Government Notice 55(T)/2024

Special light buoys, *Fl. Y. 4s*, exist in positions 12° 29'.56 S 130° 54'.10 E and 12° 29'.66 S 130° 53'.85 E.

Chart temporarily affected - Aus 26**611(T)/2024 AUSTRALIA - WESTERN AUSTRALIA - Bathurst Island - Survey operations westwards**

MMA Offshore

Vessels *Offshore Solution* and *Pacific Conquest* are conducting survey operations in areas bounded by the following positions:

10° 59'.08 S 129° 17'.32 E
10° 59'.08 S 129° 23'.54 E
11° 12'.99 S 129° 36'.93 E
11° 11'.18 S 129° 42'.97 E
11° 12'.32 S 129° 43'.87 E
11° 13'.52 S 129° 42'.56 E
11° 29'.23 S 129° 44'.65 E
11° 27'.71 S 129° 49'.85 E
11° 32'.90 S 129° 50'.35 E
11° 35'.18 S 129° 44'.32 E;
and
11° 21'.69 S 129° 04'.31 E
11° 18'.70 S 129° 01'.13 E
10° 58'.87 S 129° 00'.32 E
10° 58'.86 S 129° 15'.60 E
11° 14'.74 S 129° 26'.40 E.

Tide gauges, marked by special light buoys *Fl. Y. 5s*, exist in the following positions:

10° 58'.5 S 129° 00'.0 E
10° 58'.4 S 129° 11'.7 E
10° 57'.7 S 129° 23'.5 E
11° 10'.1 S 129° 00'.3 E
11° 08'.1 S 129° 12'.4 E
11° 06'.3 S 129° 31'.2 E
11° 21'.7 S 129° 03'.9 E
11° 18'.6 S 129° 15'.2 E
11° 15'.9 S 129° 24'.5 E
11° 11'.8 S 129° 44'.0 E
11° 24'.4 S 129° 35'.6 E
11° 23'.0 S 129° 47'.7 E
11° 35'.7 S 129° 42'.8 E
11° 33'.6 S 129° 52'.5 E.

Mariners are advised to navigate with caution in the area.

Chart temporarily affected - Aus 309 - Aus 310 - Aus 311**612(T)/2024 AUSTRALIA - WESTERN AUSTRALIA - Browse Island - Drill rig northwestwards**

MODU *Noble Deliverer*, Australian Border Force

Drill rig *Noble Deliverer* is conducting drilling operations in position 13° 56'.66 S 123° 12'.62 E.

Chart temporarily affected - Aus 319 - Aus 320

613(T)/2024 AUSTRALIA - WESTERN AUSTRALIA - Cape Preston - Light buoy northwestwards
 Australian Maritime Safety Authority , Pilbara Ports Authority

A pink spherical light buoy, Q.Y, exists in position 20° 35'.81 S 116° 04'.58 E.

Mariners are advised to navigate with caution in the area.

Chart temporarily affected - Aus 327 - Aus 742

614(T)/2024 AUSTRALIA - WESTERN AUSTRALIA - Cartier Island - Drill rig southwestwards moved

Former Notice - 896(T)/2023 is cancelled
 MODU *Noble Deliverer* , Australian Border Force

Cancel this notice on receipt.

Chart formerly affected - Aus 319

615(T)/2024 AUSTRALIA - WESTERN AUSTRALIA - Cockburn Sound - Scientific instruments recovered

Former Notice - 452(T)/2024 is cancelled
 Department of Transport WA

Cancel this notice on receipt.

Chart formerly affected - Aus 117 - Aus 754

616(T)/2024 AUSTRALIA - WESTERN AUSTRALIA - Isthmus Bay - Scientific instrument

Department of Transport WA Notice 1341/2024

A special light buoy, *Fl.Y.2.5s*, exists in position 35° 06'.58 S 117° 58'.66 E.

Mariners are advised to navigate with caution in the area and keep well clear.

Chart temporarily affected - Aus 118

617(T)/2024 AUSTRALIA - WESTERN AUSTRALIA - Montebello Islands - Survey operations northwards

EGS Survey Pty Ltd

On or about 15 August 2024, vessel *Offshore Supplier* will be conducting survey operations, with a towed array, in an area bound by the following positions:

19° 57'.56 S 115° 26'.24 E

20° 03'.06 S 115° 26'.24 E

20° 03'.06 S 115° 37'.78 E

19° 49'.15 S 115° 56'.55 E

19° 43'.70 S 115° 56'.55 E

19° 39'.86 S 115° 47'.53 E

19° 39'.86 S 115° 41'.74 E.

Mariners are advised to navigate with caution in the area. 0.27M clearance requested.

Chart temporarily affected - Aus 327 - Aus 328

618(T)/2024 AUSTRALIA - WESTERN AUSTRALIA - Muiron Islands - Drill rig northwestwards

Former Notice - 262(T)/2024 is cancelled
 Australian Maritime Safety Authority Auscoast Warning 242/2024, MODU *Transocean Endurance*

Drill rig *Transocean Endurance* is conducting drilling operations in position 21° 28'.10 S 113° 50'.80 E.

Chart temporarily affected - Aus 328 - Aus 329

619(P)/2024 AUSTRALIA - WESTERN AUSTRALIA - Naturaliste Reefs - Depth eastward
Department of Transport WA

An unconfirmed shoal depth of less than 5m has been reported in the vicinity of 33°14'.65 S, 115°08'.76 E.

Mariners should navigate with caution in the area.

Chart which will be affected - Aus 335 - Aus 755

620(T)/2024 AUSTRALIA - WESTERN AUSTRALIA - Princess Royal Harbour - Marine farm; light buoys
Former Notice - 111(T)/2023 is cancelled
Department of Transport WA Notice 6130/2024

A marine farm marked by special light buoys, *Fl.Y.4s*, exists in an area bounded by the following positions:

35° 04'.22 S 117° 54'.51 E
35° 04'.22 S 117° 54'.61 E
35° 04'.21 S 117° 54'.61 E
35° 04'.21 S 117° 55'.00 E
35° 04'.09 S 117° 55'.00 E
35° 04'.09 S 117° 55'.20 E
35° 04'.36 S 117° 55'.20 E
35° 04'.36 S 117° 55'.14 E
35° 04'.48 S 117° 55'.14 E
35° 04'.48 S 117° 54'.51 E.

Chart temporarily affected - Aus 118

621(T)/2024 AUSTRALIA - WESTERN AUSTRALIA - Wilson Head - Scientific instruments
Former Notice - 631(T)/2023 is cancelled
Department of Transport WA Notice 5793/2024

Two special light buoys, *Fl.Y.2·5s*, exist in the vicinity of position 35° 02'.93 S 117° 21'.82 E.

Chart temporarily affected - Aus 336

622(T)/2024 AUSTRALIA - SOUTH AUSTRALIA - Port Adelaide - Light beacon destroyed
Department for Infrastructure and Transport SA Notice 40(T)/2024

The light beacon, *Q.10M Entrance* (34° 46'.82 S 138° 22'.53 E), has been destroyed; a special virtual AIS exists in situ.

Mariners are advised to navigate with caution in the area.

Chart temporarily affected - Aus 130 - Aus 485 - Aus 781

623(T)/2024 AUSTRALIA - SOUTH AUSTRALIA - Port Lincoln - Porter Bay - Light beacon unlit
Department for Infrastructure and Transport SA Notice 43(T)/2024

The light beacon, *Fl.R.1·5s* (34° 44'.50 S 135° 52'.89 E), is unlit.

Mariners are advised to navigate with caution in the area.

Chart temporarily affected - Aus 134

624(P)/2024 AUSTRALIA - SOUTH AUSTRALIA - Spencer Gulf - Point Lowly - Shoaling

Office of Hydrogen Power South Australia

Latest survey indicates shoaler depths than those charted may exist in an area bounded by the following positions:

37° 56'.16 S 137° 45'.49E

37° 55'.77 S 137° 47'.76E

37° 58'.67 S 137° 47'.86E

37° 58'.89 S 137° 46'.87E

Mariners are advised to navigate with caution in the area.

Charts will be updated in due course.

Chart which will be affected - Aus 136 - Aus 778

625(T)/2024 AUSTRALIA - VICTORIA - Western Port - North Arm - Scientific instrument

Ports Victoria Notice 302(T)/2024

A subsurface scientific instrument, 1m above the seabed, exists in position 38° 19'.79 S 145° 13'.93 E.

Mariners are advised to navigate with caution in the area.

Chart temporarily affected - Aus 151

626(T)/2024 AUSTRALIA - VICTORIA - Western Port - North Arm - Geotechnical and geophysical operations completed

Former Notice - 230(T)/2024 is cancelled

Ports Victoria Notice 106(T)/2024

Cancel this notice on receipt.

Chart formerly affected - Aus 151

627(T)/2024 AUSTRALIA - TASMANIA - Robbins Island to Rocky Cape - Scientific instruments northeastwards

Maritime and Safety Tasmania Notice M283(T)/2024

Special light buoys, *Fl. Y. 3s*, exist in the following positions:

40° 33'.37 S 145° 05'.92 E

40° 33'.40 S 145° 06'.12 E

40° 33'.45 S 145° 34'.28 E

40° 33'.58 S 145° 34'.04 E

40° 38'.43 S 145° 35'.41 E.

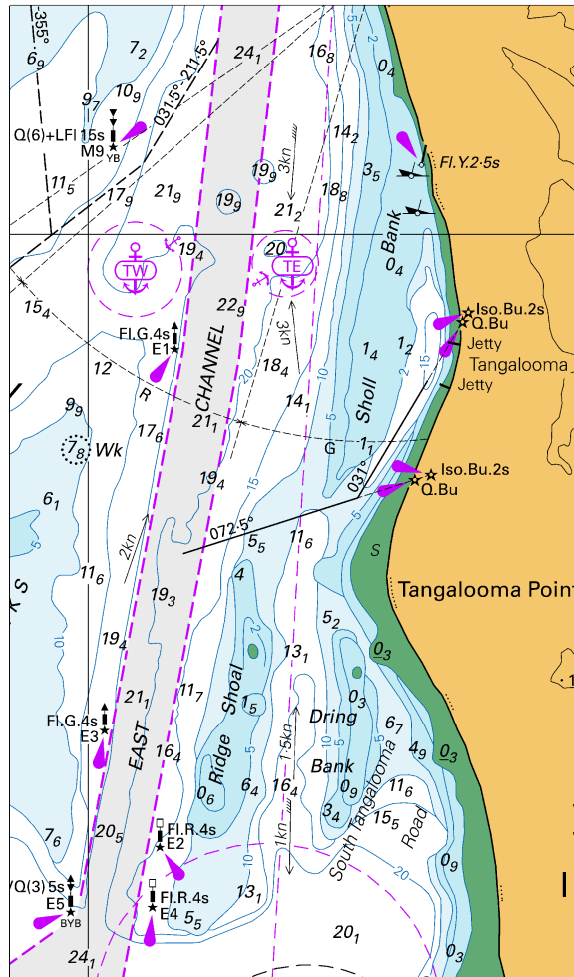
Chart temporarily affected - Aus 487 - Aus 790

II

HYDROGRAPHIC REPORTS

NIL

To accompany Australian Notice to Mariners 586/2024

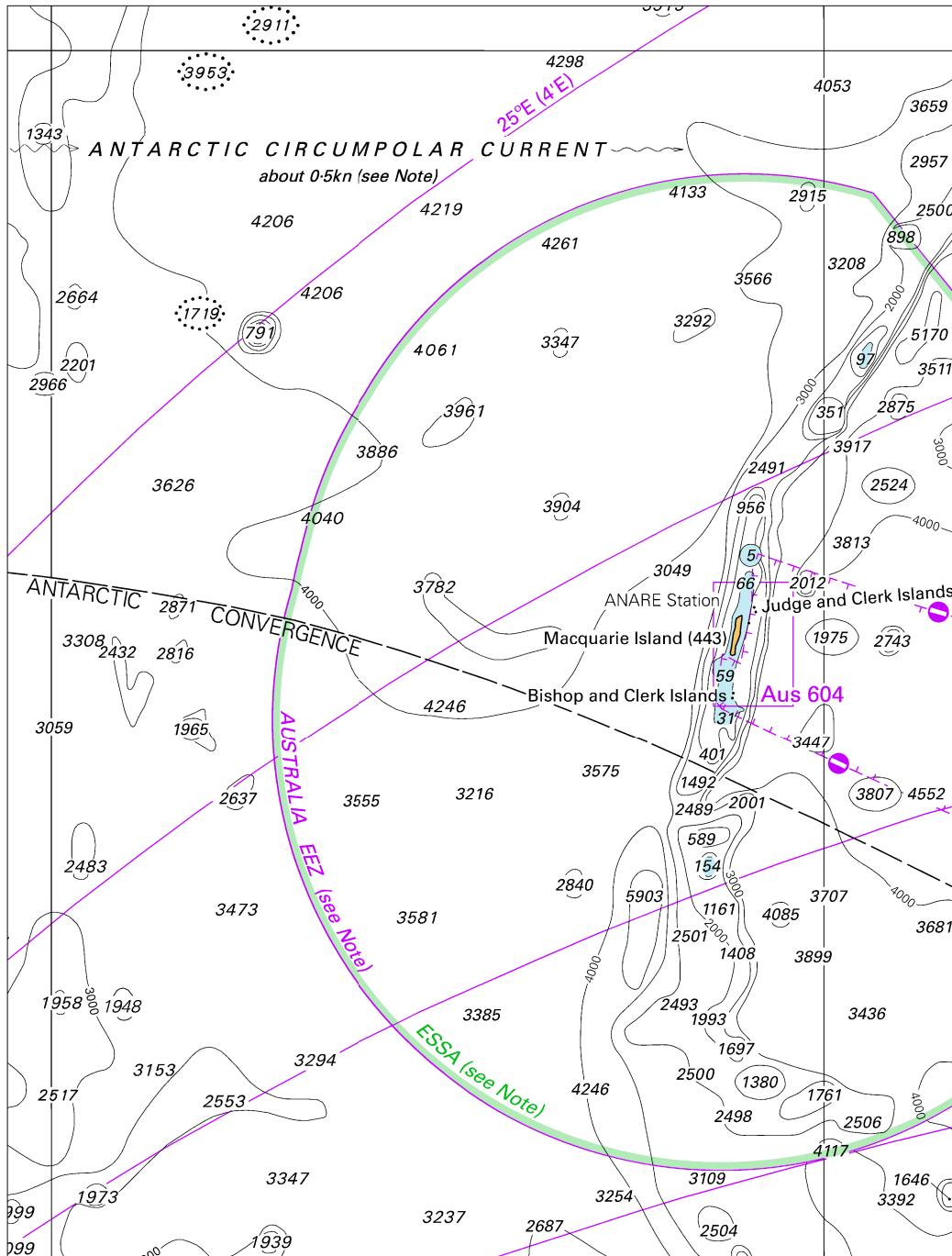


Block for chart Aus236

(75.5 x 128.7mm)

© Commonwealth of Australia 2024

To accompany Australian Notice to Mariners 593/2024



Block for chart Aus 4074

© Commonwealth of Australia 2024

(136.2 x 180.4mm)