

TEMPORARY AND PRELIMINARY NOTICES
In force on 27 September 2024

NEW SOUTH WALES

709(T)/2016 AUSTRALIA - NEW SOUTH WALES - Cape Byron - Obstructions eastwards
HMAS *Gascoyne*

Obstructions exist in positions 28° 36'.20 S 153° 44'.30 E and 28° 36'.95 S 153° 44'.02 E.

Chart temporarily affected - Aus 813

549(T)/2020 AUSTRALIA - NEW SOUTH WALES - Port Kembla - Exclusion zone
Port Authority of New South Wales

A 50m exclusion zone exists around the northern end of berth 206 (34° 28'.26 S 150° 54'.67 E).

Mariners are not to enter the area without obtaining permission from the Harbour Master or VTIC.

Chart temporarily affected - Aus 195

604(T)/2020 AUSTRALIA - NEW SOUTH WALES - Jervis Bay - Hyams Beach - Light buoy
Australian Maritime Warfare Centre

A special light buoy, *Fl.Y.5s*, exists in position 35° 06'.23 S 150° 42'.85 E.

Chart temporarily affected - Aus 807 - Aus 808

997(T)/2020 AUSTRALIA - NEW SOUTH WALES - Merimbula Bay to Broulee Island - Scientific instruments
Transport for NSW

Special light buoys, *Fl(5)Y.20s*, exist in the following positions:

35° 50'.9 S 150° 11'.3 E

35° 52'.8 S 150° 09'.7 E

36° 54'.5 S 149° 55'.0 E.

Chart temporarily affected - Aus 806 - Aus 807

105(T)/2021 AUSTRALIA - NEW SOUTH WALES - Port Jackson - Berrys Bay - Jetties ruined
Transport for NSW , NSW Roads and Maritime Services

Jetties and piers are ruined, and partially submerged obstructions may exist in an area bounded by the coast and the following positions:

33° 50'.70 S 151° 11'.69 E

33° 50'.70 S 151° 11'.76 E

33° 50'.67 S 151° 11'.85 E

33° 50'.63 S 151° 11'.84 E.

A west cardinal light beacon, *Q(9)15s*, exists in position 33° 50'.59 S 151° 11'.50 E.

Mariners are advised to navigate with caution in the area.

Chart temporarily affected - Aus 200

880(T)/2021 AUSTRALIA - NEW SOUTH WALES - Cape Byron - Light buoy off station northwards
Byron Bay Deep Sea Fishing Club

The special light buoy, *Fl.Y.5s* (28° 35'.40 S 153° 38'.11 E), is off station.

Chart temporarily affected - Aus 813

61(T)/2022 AUSTRALIA - NEW SOUTH WALES - Port Jackson - Chowder Bay - Scientific instruments
Former Notice - 524(T)/2021 is cancelled
Department of Defence

Subsurface scientific instruments, 2m above seabed, exist in the following positions:

33° 50.42' S 151° 15.42' E

33° 50.39' S 151° 15.39' E

33° 50.38' S 151° 15.43' E.

The area will be marked by buoys.

Mariners are advised to navigate with caution in the area.

Chart temporarily affected - Aus 200

228(T)/2022 AUSTRALIA - NEW SOUTH WALES - Botany Bay - Port Botany - Light beacon destroyed

Port Authority of New South Wales Notice 14/2022

The east cardinal light beacon, Q(3)10s (33° 58'.37 S 151° 11'.76 E), has been destroyed; a light buoy, Q, exists in situ.

Chart temporarily affected - Aus 198

727(T)/2022 AUSTRALIA - NEW SOUTH WALES - Tathra to Seal Rocks - Obstructions

Transport for NSW Notice SY2028

Shipping containers and debris may exist along the coast and in offshore waters between Tathra (36° 43'.55 S 149° 59'.46 E) and Seal Rocks (32° 27'.86 S 152° 33'.22 E).

Mariners are advised to navigate with caution in the area.

Chart temporarily affected - Aus 489 - Aus 806 - Aus 807 - Aus 808 - Aus 809 - Aus 810 - Aus 4601 (INT 601) - Aus 4602 (INT 602)

133(T)/2023 AUSTRALIA - NEW SOUTH WALES - Crabbes Creek Beach - Wreck eastwards

Australian Maritime Safety Authority

A wreck exists in position 28° 29'.43 S 153° 38'.52 E.

Chart temporarily affected - Aus 813

193(T)/2023 AUSTRALIA - NEW SOUTH WALES - Ulladulla - Wreck northeastwards

Transport for NSW

A wreck exists in position 35° 19'.08 S 150° 35'.44 E.

Chart temporarily affected - Aus 807

608(T)/2023 AUSTRALIA - NEW SOUTH WALES - Botany Bay - Kurnell to La Perouse - Harbour works

Port Authority of New South Wales Notice 16/2023

Works associated with the construction of the Kamay Ferry Wharves are in progress in the vicinity of positions 33° 59'.21 S 151° 13'.68 E and 34° 00'.14 S 151° 13'.01 E.

An exclusion zone exists in the works area and will be marked by special buoys.

Anchoring is prohibited in the vicinity of position 34° 00'.28 S 151° 12'.83 E.

Mariners are advised to navigate with caution in the area.

Chart temporarily affected - Aus 198

701(T)/2023 AUSTRALIA - NEW SOUTH WALES - Cape Banks to Cabbage Tree Bay - Scientific instruments eastwards

Sydney Institute of Marine Science

Subsurface scientific instruments exist as follows:

<i>Position</i>	<i>Metres below surface</i>
33° 47'.92 S 151° 17'.71 E	9

33° 48'.05 S 151° 18'.33 E	24
33° 49'.59 S 151° 17'.89 E	28
33° 49'.85 S 151° 17'.64 E	28
33° 50'.05 S 151° 17'.48 E	27
33° 50'.25 S 151° 17'.30 E	26.5
33° 53'.74 S 151° 17'.30 E	27
33° 53'.91 S 151° 17'.75 E	41
33° 54'.17 S 151° 18'.16 E	58
33° 54'.43 S 151° 18'.59 E	63
33° 54'.69 S 151° 19'.05 E	64
33° 54'.96 S 151° 19'.51 E	64
33° 55'.21 S 151° 19'.93 E	71
33° 55'.46 S 151° 20'.36 E	70
33° 55'.72 S 151° 20'.79 E	80
33° 55'.98 S 151° 21'.24 E	80
33° 56'.25 S 151° 21'.71 E	82
33° 56'.49 S 151° 22'.16 E	87
33° 56'.75 S 151° 22'.59 E	90
33° 57'.06 S 151° 23'.02 E	98
33° 57'.32 S 151° 23'.47 E	119.

Chart temporarily affected - Aus 200 - Aus 489 - Aus 809

750(T)/2023 AUSTRALIA - NEW SOUTH WALES - Port Stephens - Scientific instruments
Manly Hydraulics Laboratory

Special light buoys, *Fl.Y.3s*, exist in positions 32° 41'.53 S 152° 01'.92 E and 32° 41'.78 S 152° 05'.10 E.

Chart temporarily affected - Aus 209

808(T)/2023 AUSTRALIA - NEW SOUTH WALES - Clarence River - Scientific instrument
NSW Department of Planning and Environment

A special light buoy, *Fl.Y.5s*, exists in position 29° 25'.31 S 153° 21'.32 E.

Chart temporarily affected - Aus 222

855(T)/2023 AUSTRALIA - NEW SOUTH WALES - Port Jackson - Balls Head - Drilling operations
Port Authority of New South Wales Notice 19/2023

Barge *Sealift 3* will be conducting drilling operations in an area bounded by the following positions:

33° 50'.66 S 151° 11'.36 E
33° 50'.78 S 151° 11'.58 E
33° 50'.66 S 151° 11'.58 E
33° 50'.57 S 151° 11'.39 E.

A 10m exclusion zone, marked by special light buoys, exists around the barge.

Mariners are advised to navigate with caution in the area.

Chart temporarily affected - Aus 200

1050(P)/2023 AUSTRALIA - NEW SOUTH WALES - Twofold Bay - Eden - Snug Cove - Wave attenuator
Former Notice - 203(T)/2022 is cancelled
Port Authority of New South Wales

A wave attenuator exists between the following positions:

37° 04'.36 S 149° 54'.41 E
37° 04'.35 S 149° 54'.36 E
37° 04'.40 S 149° 54'.26 E
37° 04'.35 S 149° 54'.21 E.

Charts will be updated in due course.

Chart which will be affected - Aus 192

105(T)/2024 AUSTRALIA - NEW SOUTH WALES - Green Bluff - Scientific instruments eastwards
Sydney Institute of Marine Science

Subsurface scientific instruments exist as follows:

<i>Position</i>	<i>Metres below surface</i>
30° 12'.27 S 153° 16'.54 E	43
30° 12'.27 S 153° 17'.05 E	50
30° 12'.31 S 153° 15'.46 E	23
30° 12'.44 S 153° 14'.95 E	30
30° 12'.49 S 153° 14'.43 E	31
30° 12'.55 S 153° 13'.92 E	35
30° 12'.58 S 153° 13'.40 E	34
30° 12'.64 S 153° 12'.90 E	25
30° 12'.67 S 153° 10'.48 E	16
30° 12'.70 S 153° 12'.41 E	26
30° 12'.73 S 153° 11'.91 E	24
30° 12'.77 S 153° 11'.40 E	23
30° 12'.81 S 153° 10'.87 E	20.

Chart temporarily affected - Aus 812

106(T)/2024 AUSTRALIA - NEW SOUTH WALES - Montague Island - Scientific instruments
Sydney Institute of Marine Science

Subsurface scientific instruments exist as follows:

<i>Position</i>	<i>Metres below surface</i>
36° 15'.28 S 150° 14'.20 E	49
36° 15'.40 S 150° 13'.08 E	7
36° 15'.47 S 150° 12'.58 E	33
36° 15'.52 S 150° 12'.04 E	38
36° 15'.59 S 150° 11'.50 E	31
36° 15'.66 S 150° 10'.96 E	30
36° 15'.71 S 150° 10'.43 E	29
36° 15'.75 S 150° 09'.15 E	12
36° 15'.77 S 150° 09'.97 E	29.

Chart temporarily affected - Aus 806 - Aus 807

107(T)/2024 AUSTRALIA - NEW SOUTH WALES - Seal Rocks - Scientific instruments
Sydney Institute of Marine Science

Subsurface scientific instruments exist as follows:

<i>Position</i>	<i>Metres below surface</i>
32° 27'.16 S 152° 33'.47 E	35
32° 27'.16 S 152° 32'.75 E	28
32° 27'.45 S 152° 32'.94 E	26
32° 28'.45 S 152° 33'.80 E	38
32° 28'.81 S 152° 34'.11 E	42.

Chart temporarily affected - Aus 810

217(T)/2024 AUSTRALIA - NEW SOUTH WALES - Port Kembla - Harbour works

Former Notice - 594(T)/2021 is cancelled

Port Authority of New South Wales Notice 03/2021

Works associated with the construction of an LNG import facility are in progress at berth 101 (34° 27'.53 S 150° 53'.85 E).

Chart temporarily affected - Aus 195

739(T)/2024 AUSTRALIA - NEW SOUTH WALES - Jervis Bay - Military exercise

Transport for NSW Notice SO2453/2024

Military exercises will be conducted on the waters of Jervis Bay and in the adjacent waters of the Tasman Sea from 30 September to 25 October 2024.

An exclusion zone exists around all vessels involved in the exercises and exclusion zones will be indicated by the presence of patrol and naval vessels on the perimeters.

Vessels involved in the exercises will monitor VHF Ch 16 and Ch 19. Contact can also be made to the Battle Watch Captain on 0461 312 504.

Mariners area advised to navigate with caution in the area.

Chart temporarily affected - Aus 807 - Aus 808

740(T)/2024 AUSTRALIA - NEW SOUTH WALES - Port Jackson - Garden Island - Dredging operations

Port Authority of New South Wales Notice 21/2024

The dredge *Sydney*, barge *Pelican* and support vessel *Arana* are conducting dredging operations in areas bounded by the coast and the following positions:

33° 51'.94 S 151° 13'.30 E

33° 51'.65 S 151° 13'.47 E

33° 51'.47 S 151° 13'.40 E

33° 51'.45 S 151° 13'.72 E

33° 51'.47 S 151° 13'.70 E

and;

33° 51'.58 S 151° 13'.81 E

33° 51'.61 S 151° 13'.84 E

33° 51'.66 S 151° 13'.79 E

33° 51'.63 S 151° 13'.77 E.

Mariners are advised to navigate with caution in the area.

Chart temporarily affected - Aus 200

741(T)/2024 AUSTRALIA - TASMAN SEA - Tasman Basin - Light buoy off station

Australian Bureau of Meteorology

The special light buoy, *Fl.Y.2s* (44° 47'.40 S 161° 42'.03 E), is off station.

Chart temporarily affected - Aus 4601 (INT 601)

QUEENSLAND

461(T)/2017 AUSTRALIA - QUEENSLAND - Bowen - Obstruction

Maritime Safety Queensland

An obstruction marked by a special light buoy, *Fl.Y.2.5s*, exists in position 20° 01'.40 S 148° 15'.26 E.

Chart temporarily affected - Aus 268

470(T)/2017 AUSTRALIA - QUEENSLAND - North Gardner Bank - Foul ground

Maritime Safety Queensland Notice 24/2017

A foul ground exists in position 24° 56'.30 S 153° 26.90 E.

Chart temporarily affected - Aus 816

523(P)/2017 AUSTRALIA - QUEENSLAND - Great Barrier Reef - Joist Reef to Hydrographers Passage - Shoaling

LADS Flight

Latest survey shows shoaler depths than those charted may exist in an area bounded by the following positions:

19° 27'.1 S 149° 38'.9 E

20° 12'.2 S 149° 39'.1 E

20° 12'.2 S 150° 18'.5 E

19° 39'.2 S 150° 18'.5 E

Charts will updated in due course.

Chart which will be affected - Aus 821 - Aus 824 - Aus 825

989(P)/2017 AUSTRALIA - CORAL SEA - Portlock Reefs - Reefs

LADS Flight

Latest survey shows uncharted reefs exist in area bounded by the following positions:

9° 33'.30 S 144° 46'.00 E

9° 33'.90 S 144° 42'.50 E

9° 36'.60 S 144° 42'.70 E

9° 37'.70 S 144° 45'.50 E.

Mariners are advised to navigate with caution in the area.

Charts will be updated in due course.

Chart which will be affected - Aus 377

27(T)/2018 AUSTRALIA - QUEENSLAND - Brisbane - Redcliffe Jetty - Harbour works

Maritime Safety Queensland

Harbour works are in progress at the head of Redcliffe Jetty (27° 13'.567 S 153° 07'.047 E)

All vessels will display appropriate lights and symbols.

Mariners are advised to navigate with caution

Chart temporarily affected - Aus 236

72(T)/2018 AUSTRALIA - QUEENSLAND - Fitzroy Island - Bird Rock - Light buoys

Former Notice - 29(T)/2018 is cancelled

Maritime Safety Queensland Notice 503(T)/2017

Two special light buoys, *Fl.Y.2.5s* exist in position 16° 55'.43 S 145° 59'.43 E.

Chart temporarily affected - Aus 830

213(T)/2018 AUSTRALIA - QUEENSLAND - Bribie Island - South Point - Shoaling

Maritime Safety Queensland

Shoaling exists at the southern end of Bribie Island, with a least depth of *0.5m* in position 27° 06'.18 S 153° 11'.24 E.

Mariners are advised to navigate with caution in the area.

Chart temporarily affected - Aus 236

215(T)/2018 AUSTRALIA - QUEENSLAND - Hinchinbrook Channel - Oyster Point - Wreck

Maritime Safety Queensland

A stranded wreck marked by a special light buoy, *Fl.Y.3s*, exists in position 18° 16'.10 S 146° 03'.06 E.

Chart temporarily affected - Aus 259

782(P)/2018 AUSTRALIA - QUEENSLAND - Flinders Reef - Shoaling

Maritime Safety Queensland

Latest survey shows shoaler depths than those charted may exist in areas bounded by the following positions:

17° 41'.74 S 148° 35'.82 E
17° 37'.88 S 148° 36'.44 E
17° 32'.09 S 148° 34'.36 E
17° 22'.81 S 148° 25'.78 E
17° 30'.72 S 148° 16'.29 E
17° 43'.51 S 148° 20'.39 E
17° 44'.26 S 148° 27'.71 E.

and:

17° 49'.85 S 148° 23'.54 E
17° 53'.82 S 148° 29'.12 E
17° 53'.16 S 148° 32'.28 E
17° 50'.79 S 148° 33'.13 E
17° 47'.63 S 148° 29'.64 E
17° 45'.93 S 148° 25'.72 E
17° 46'.73 S 148° 23'.97 E.

Mariners are advised to navigate with extreme caution in the area.

Charts will be updated in due course.

Chart which will be affected - Aus 615

488(T)/2019 AUSTRALIA - QUEENSLAND - Karumba - Wreck northwards

Maritime Safety Queensland Notice 188(T)/2019

A stranded wreck marked by a special light buoy, *Fl.Y.2-5s*, exists in position 17° 15'.36 S 140° 53'.89 E.

Chart temporarily affected - Aus 303

494(P)/2019 AUSTRALIA - CORAL SEA - Kenn Reefs and Frederick Reefs - Shoaling

LADS

Latest surveys indicate shoaler depths than those currently charted exist in an area bounded by the following positions:

21° 16'.05 S 155° 42'.52 E
21° 16'.64 S 155° 44'.44 E
21° 13'.83 S 155° 46'.76 E
21° 11'.42 S 155° 45'.73 E.

and

21° 01'.09 S 154° 21'.18 E
21° 01'.32 S 154° 23'.02 E
20° 59'.87 S 154° 24'.06 E
20° 55'.25 S 154° 23'.85 E
20° 54'.42 S 154° 23'.35 E
20° 58'.22 S 154° 20'.72 E.

Charts will be updated in due course. Mariners are advised to navigate with caution.

Chart which will be affected - Aus 611 - Aus 612

548(P)/2019 AUSTRALIA - QUEENSLAND - Hydrographers Passage - Shoaling
LADS Flight

Latest survey shows shoaler depths than those charted may exist in an area bounded by the following positions:

20° 36'.52 S 150° 04'.39 E
20° 30'.63 S 150° 17'.03 E
20° 23'.93 S 150° 16'.63 E
20° 06'.15 S 150° 04'.79 E
20° 11'.27 S 150° 00'.18 E
20° 21'.88 S 150° 04'.70 E
20° 27'.57 S 150° 09'.82 E
20° 32'.65 S 150° 01'.91 E.

Mariners are advised to navigate with caution in the area.

Charts will be updated in due course.

Chart which will be affected - Aus 821 - Aus 824

603(T)/2019 AUSTRALIA - QUEENSLAND - Weipa - Albatross Bay - Scientific instruments
Maritime Safety Queensland Notice 242(T)/2019

Special light buoys, *Fl. Y. 6s*, exist in the following positions:

12° 40'.10 S 141° 50'.77 E
12° 42'.09 S 141° 52'.00 E
12° 40'.42 S 141° 46'.62 E.

Chart temporarily affected - Aus 4

105(T)/2020 AUSTRALIA - QUEENSLAND - Cape Bowling Green - Obstruction; light buoy
Maritime Safety Queensland Notice 19(T)/2020

An obstruction marked by a special light buoy, *Fl. Y. 2-5s*, exists in position 19° 18'.26 S 147° 22'.96 E.

Chart temporarily affected - Aus 827

429(T)/2020 AUSTRALIA - QUEENSLAND - Mackay - Obstruction; light buoy
Maritime Safety Queensland Notice 183/2020

An obstruction marked by a special light buoy exists in position 21° 06'.43 S 149° 13'.52 E.

Chart temporarily affected - Aus 250

1008(T)/2020 AUSTRALIA - QUEENSLAND - Townsville - Wreck
Maritime Safety Queensland Notice 427(T)/2020

A wreck marked by a special light buoy, *Q. Y.*, exists in position 19° 14'.91 S 146° 49'.57 E.

Mariners are advised to navigate with caution in the area.

Chart temporarily affected - Aus 256

1049(P)/2020 AUSTRALIA - TORRES STRAIT - Deliverance Island - Shoaling
HMAS *Albany*

Latest survey shows shoaling exists as follows:

<i>Depth</i>	<i>Position</i>
1.1m	9° 32'.89 S 141° 27'.03 E
3.6m	9° 32'.22 S 141° 27'.73 E.

Mariners are advised to navigate with caution in the area.

Charts will be updated in due course.

Chart which will be affected - Aus 842

21(T)/2021 AUSTRALIA - CORAL SEA - Middleton Reef - Unexploded ordnance
Parks Australia

An exclusion zone exists in an area bounded by the following positions:

29° 27'.12 S 159° 02'.92 E

29° 26'.58 S 159° 02'.92 E

29° 26'.58 S 159° 03'.55 E

29° 27'.12 S 159° 03'.55 E.

Unexploded ordnance may exist in the area and mariners are advised to navigate with caution.

Chart temporarily affected - Aus 618

64(T)/2021 AUSTRALIA - QUEENSLAND - Gladstone - Auckland Point Wharves - Harbour works
Maritime Safety Queensland 360(T)/2019

Construction of a mooring dolphin is in progress off the eastern end of berth No 4 (23° 50'.02 S 151° 15'.91 E) by vessel *AMS Shine* and the barge *M1201* and support vessels.

Vessels and hazards will display appropriate lights and shapes.

Vessels will monitor VHF Ch 13.

Mariners are advised to navigate with caution in the area.

Chart temporarily affected - Aus 245

247(T)/2021 AUSTRALIA - QUEENSLAND - Cape Ferguson - Scientific instrument
Australian Institute of Marine Science

A special spar light buoy, Q(4)Y.18s, exists in position 19° 16'.52 S 147° 03'.84 E.

Chart temporarily affected - Aus 256

249(P)/2021 AUSTRALIA - QUEENSLAND - Holt Island to Hexham Island - Shoaling
LADS Flight

Latest survey shows shoaler depths than those charted may exist in areas bounded by the following positions:

22° 11'.75 S 150° 22'.51 E

22° 11'.90 S 150° 22'.99 E

22° 13'.77 S 150° 22'.25 E

22° 13'.51 S 150° 21'.60 E;

and

22° 00'.22 S 150° 23'.51 E

22° 01'.04 S 150° 23'.61 E

22° 02'.68 S 150° 18'.70 E

22° 01'.44 S 150° 16'.29 E

22° 00'.19 S 150° 21'.01 E.

Mariners are advised to navigate with caution in the area.

Charts will be updated in due course.

Chart which will be affected - Aus 260 - Aus 367 - Aus 822

332(T)/2021 AUSTRALIA - QUEENSLAND - Poll Islet - Wreck
Maritime Safety Queensland , Australian Border Force

A stranded wreck exists in position 10° 15'.17 S 142° 49'.58 E.

Chart temporarily affected - Aus 839 - Aus 841

337(P)/2021 AUSTRALIA - TORRES STRAIT - Boigu Island - Shoaling

HMAS *Leeuwin*

Latest survey shows shoaler depths than those charted may exist in areas bounded by the following positions:

9° 14'.38 S 142° 15'.82 E

9° 15'.78 S 142° 19'.88 E

9° 15'.49 S 142° 20'.00 E

9° 13'.58 S 142° 16'.26 E;

and

9° 12'.49 S 142° 15'.50 E

9° 12'.33 S 142° 13'.73 E

9° 13'.16 S 142° 13'.24 E

9° 13'.20 S 142° 15'.21 E.

Mariners are advised to navigate with caution in the area.

Charts will be updated in due course.

Chart which will be affected - Aus 841

738(T)/2021 AUSTRALIA - QUEENSLAND - Fitzroy River - Middle Channel - Scientific instrument

Maritime Safety Queensland Notice 31/2021

A special light buoy, Q.Y, exists in position 23° 28'.23 S 150° 56'.37 E.

Chart temporarily affected - Aus 265

741(T)/2021 AUSTRALIA - QUEENSLAND - Fraser Island - Elbow Point - Shoaling

Navionics

Depths of less than 1m have been reported in an area bounded by the following positions:

25° 44'.40 S 152° 59'.29 E

25° 44'.71 S 152° 59'.37 E

25° 44'.89 S 153° 00'.30 E

25° 44'.66 S 153° 00'.38 E

25° 44'.40 S 152° 59'.77 E.

Mariners are advised to navigate with caution in the area.

Charts will be updated in due course.

Chart temporarily affected - Aus 817

980(T)/2021 AUSTRALIA - QUEENSLAND - Fitzroy River - South Channel - Scientific instrument

Former Notice - 661(T)/2016 is cancelled

Maritime Safety Queensland Notice 400(T)/2021

A special light buoy, *Fl.Y.4s*, exists in position 23° 30'.23 S 150° 45'.83 E.

Chart temporarily affected - Aus 819

1025(T)/2021 AUSTRALIA - TORRES STRAIT - Great North East Channel - Coconut Island - Scientific instrument

Former Notice - 486(T)/2021 is cancelled

Maritime Safety Queensland Notice 427(T)/2021

A special light buoy, *Fl(5)Y.20s*, exists in position 10° 03'.18 S 143° 03'.12 E.

Chart temporarily affected - Aus 839

27(P)/2022 AUSTRALIA - TORRES STRAIT - Boigu Island - Shoaling

Australian Institute of Marine Science

The drying area (9° 15'.51 S 142° 06'.09 E) extends 0.27M northwest to position 9° 15'.31 S 142° 05'.91 E.

The reef (9° 11'.96 S 142° 10'.56 E) extends 0.27M south to position 9° 12'.23 S 142° 10'.56 E.

Mariners are advised to navigate with caution in the area.

Charts will be updated in due course.

Chart which will be affected - Aus 841

236(T)/2022 AUSTRALIA - QUEENSLAND - Bundaberg - Burnett River - Light buoy off station
Maritime Safety Queensland Notice 109(T)/2022

The starboard lateral light buoy, *Fl.G.4s BR5* (24° 48'.78 S 152° 21'.77 E), is off station.

Chart temporarily affected - Aus 242

277(T)/2022 AUSTRALIA - QUEENSLAND - Cairns - Trinity Inlet - Wreck
Maritime Safety Queensland Notice 156/2022

A wreck marked by a light, *Fl.Y.3s*, exists in position 16° 56'.70 S 145° 46'.98 E.

Mariners are advised to navigate with caution in the area.

Chart temporarily affected - Aus 262

388(P)/2022 AUSTRALIA - QUEENSLAND - Bundaberg - Burnett River - Shoaling
Australian Hydrographic Office

Latest survey indicates shoaler depths than those charted may exist in the Burnett River between Long Reach and Millaquin Reach.

The most significant shoals are as follows:

<i>Position</i>	<i>Depth</i>
24° 49'.11 S 152° 22'.08 E	-0.1m
24° 49'.94 S 152° 22'.31 E	0.8m.

Mariners are advised to navigate with caution in the area.

Charts will be updated in due course.

Chart which will be affected - Aus 242

422(T)/2022 AUSTRALIA - QUEENSLAND - Palm Beach - Light buoy off station
Maritime Safety Queensland Notice 220(T)/2022

The special light buoy, *Fl.Y.5s* (28° 06'.34 S 153° 28'.42 E), is off station.

Chart temporarily affected - Aus 814

490(T)/2022 AUSTRALIA - QUEENSLAND - Gold Coast Seaway - Light buoy destroyed eastwards
Maritime Safety Queensland Notice 266/2022

The special light buoy, *Fl.Y.4s* (27° 54'.93 S 153° 27'.59 E), has been destroyed and has sunk in position.

Mariners are advised to navigate with caution in the area.

Chart temporarily affected - Aus 814

736(T)/2022 AUSTRALIA - QUEENSLAND - Moreton Bay - Scarborough - Mooring buoy
Maritime Safety Queensland Notice 419(T)/2022

An unlit blue mooring buoy exists in position 27° 11'.00 S 153° 05'.90 E.

Chart temporarily affected - Aus 236

788(P)/2022 AUSTRALIA - CORAL SEA - Diamond Islets - Shoaling
LADS Flight

Shoaler depths than those charted exist in the vicinity of the Diamond Islets.

Charts will updated in due course.

Chart which will be affected - Aus 614

875(T)/2022 AUSTRALIA - QUEENSLAND - Brisbane River - Entrance Channel to Hamilton Reach - Obstructions
Maritime Safety Queensland

Due to a severe weather event, submerged obstructions and unusual currents may exist in the Brisbane River from the Entrance Channel (27° 18'.62 S 153° 12'.55 E) to South Brisbane Reach (27° 28'.29 S 153° 01'.22 E).

Mariners are advised to navigate with caution in the area.

Chart temporarily affected - Aus 237

877(T)/2022 AUSTRALIA - QUEENSLAND - Brisbane River - Hamilton Reach - Wreck
Maritime Safety Queensland Notice 172(T)/2022

A wreck marked by a special light buoy, *Fl.Y.2-5s*, exists in position 27° 26'.43 S 153° 03'.28 E.

Mariners are advised to navigate with caution in the area.

Chart temporarily affected - Aus 237

891(T)/2022 AUSTRALIA - QUEENSLAND - Moreton Bay - Spitfire Channel - Obstruction
Maritime Safety Queensland Notice 257(T)/2021

An obstruction exists on the seabed in position 27° 03'.63 S 153° 17'.32 E.

Mariners are advised to navigate with caution in the area.

Chart temporarily affected - Aus 236 - Aus 814 - Aus 815

893(T)/2022 AUSTRALIA - QUEENSLAND - Moreton Bay - Spitfire Channel - Light beacon unreliable
Maritime Safety Queensland Notice 103(T)/2021

The light beacon, *Fl.Y.1-5s S1* (27° 02'.88 S 153° 15'.99 E), is unreliable.

Chart temporarily affected - Aus 236

895(T)/2022 AUSTRALIA - QUEENSLAND - Pumicestone Channel - Wreck, light buoy
Maritime Safety Queensland Notice 466(T)/2020

A wreck marked by a special conical light buoy, *Fl.Y.2-5s*, exists in position 26° 48'.39 S 153° 07'.51 E.

Chart temporarily affected - Aus 236

946(T)/2022 AUSTRALIA - QUEENSLAND - Moreton Bay - Redcliffe - Light buoy unlit
Maritime Safety Queensland Notice 494(T)/2022

The starboard lateral light buoy, *Fl.G.4s* (27° 13'.23 S 153° 07'.27 E), is unlit.

Chart temporarily affected - Aus 236

1026(T)/2022 AUSTRALIA - QUEENSLAND - Upstart Bay - Obstructions
Maritime Safety Queensland

Obstructions on the seabed exist within a 1M radius of position 19° 44'.13 S 147° 40'.74 E.

Mariners area advised not to anchor or trawl in the area.

Chart temporarily affected - Aus 826

67(T)/2023 AUSTRALIA - QUEENSLAND - Townsville - Shoaling
Maritime Safety Queensland

Flooding and latest survey shows shoaler depths than those charted may exist in Ross River between positions 19° 15'.36 S 146° 50'.85 E and 19° 17'.00 S 146° 49'.51 E.

Mariners are advised to navigate with caution in the area.

Charts will be updated in due course.

Chart temporarily affected - Aus 256

68(T)/2023 AUSTRALIA - QUEENSLAND - Townsville - Obstructions
Maritime Safety Queensland Notice 24(T)/2023

Due to recent flooding, floating and submerged obstructions may exist in the coastal waters between Dunk Island (17° 56'.72 S 146° 09'.47 E) and Bowen (20° 00'.54 S 148° 17'.40 E).

Mariners are advised to navigate with caution in the area.

Chart temporarily affected - Aus 255 - Aus 256 - Aus 268 - Aus 825 - Aus 826 - Aus 827 - Aus 828 - Aus 829

99(T)/2023 AUSTRALIA - QUEENSLAND - Brisbane River - Lytton and Quarantine Reach - Obstruction; light buoy
Maritime Safety Queensland Notice 37(T)/2023

An obstruction marked by a special light buoy, *Fl.Y.2-5s*, exists in position 27° 24'.74 S 153° 08'.90 E.

Chart temporarily affected - Aus 237

357(T)/2023 AUSTRALIA - QUEENSLAND - Gold Coast Seaway - Wreck eastwards
Australian Maritime Safety Authority Auscoast Warning 95/2023

A wreck exists in the vicinity of position 27° 53'.8 S 153° 38'.5 E.

Chart temporarily affected - Aus 814

360(T)/2023 AUSTRALIA - QUEENSLAND - Hinchinbrook Channel - Light buoy off station
Maritime Safety Queensland Notice 168(T)/2023

The starboard lateral light buoy, *Fl.G.4-3s No15* (18° 29'.63 S 146° 17'.30 E), is off station.

Chart temporarily affected - Aus 259

361(T)/2023 AUSTRALIA - QUEENSLAND - Hinchinbrook Island - Missionary Bay - Light beacon destroyed
Former Notice - 319(T)/2023 is cancelled
Maritime Safety Queensland Notice 169(T)/2023

The special light beacon, *Fl.Y.3s* (18° 15'.20 S 146° 11'.79 E), has been destroyed; a special light buoy, *Fl.Y.3s*, exists in situ.

Mariners are advised to navigate with caution in the area.

Chart temporarily affected - Aus 259 - Aus 828

362(T)/2023 AUSTRALIA - QUEENSLAND - Orpheus Island - Light buoy removed
Former Notice - 275(T)/2023 is cancelled
Australian Institute of Marine Science

The black and yellow light buoy, *Fl.Y.2-5s* (18° 34'.35 S 146° 29'.87 E), has been temporarily removed for maintenance.

Chart temporarily affected - Aus 827 - Aus 828

398(T)/2023 AUSTRALIA - QUEENSLAND - Caloundra Head - Light unlit
Maritime Safety Queensland Notice 187(T)/2023

The light, *LFI.WR.10s 31m 8M* (26° 48'.13 S 153° 09'.04 E), is unlit.

Chart temporarily affected - Aus 236 - Aus 815

484(T)/2023 AUSTRALIA - QUEENSLAND - Fitzroy River - Middle Channel - Scientific instrument
Maritime Safety Queensland Notice 229(T)/2023

A special light buoy, *Fl.Y.5s*, exists in position 23° 27'.85 S 150° 56'.60 E.

Chart temporarily affected - Aus 265 - Aus 819

613(T)/2023 AUSTRALIA - QUEENSLAND - Hay Point - Obstruction; light buoy
Maritime Safety Queensland Notice 312(T)/2023

An obstruction marked by a special light buoy, *Fl.Y.6s*, exists in position 21° 17'.40 S 149° 18'.14 E.

Chart temporarily affected - Aus 250

614(T)/2023 AUSTRALIA - QUEENSLAND - Mackay - Obstruction; light buoy
Maritime Safety Queensland Notice 311(T)/2023

An obstruction marked by a special light buoy, *Fl.Y.6s*, exists in position 21° 06'.63 S 149° 13'.90 E.

Chart temporarily affected - Aus 250

707(T)/2023 AUSTRALIA - QUEENSLAND - Noosa Head - Scientific instrument
Maritime Safety Queensland Notice 355(T)/2023

A special light buoy, *Fl(5)Y.20s*, exists in position 26° 21'.62 S 153° 07'.58 E.

Chart temporarily affected - Aus 815

753(T)/2023 AUSTRALIA - QUEENSLAND - Brisbane River - Hamilton Reach - Lights unlit
Maritime Safety Queensland Notice 390(T)/2023

The light, *Iso.R.2s (F.Y Day) No13RS* (27° 26'.99 S 153° 05'.49 E), is unlit.

The light beacon, *Q.R (F Day)* (27° 26'.96 S 153° 05'.41 E), is unlit. A temporary port lateral light, *Fl.R.4s*, has been established on the beacon.

Mariners are advised to navigate with caution in the area.

Chart temporarily affected - Aus 237

759(T)/2023 AUSTRALIA - QUEENSLAND - Karumba - Shoaling
Former Notice - 378(T)/2021 is cancelled
Maritime Safety Queensland Notice 382(T)/2023

Shoaling exists in the entrance channel between light beacon No8 (17° 26'.36 S 140° 44'.73 E) and light beacon No10 (17° 26'.65 S 140° 45'.32 E).

Mariners should navigate between the Elbow Bank lateral light buoys to follow the change in channel position.

Mariners are advised to navigate with caution in the area.

Chart temporarily affected - Aus 6

813(T)/2023 AUSTRALIA - QUEENSLAND - Moreton Bay - Bramble Bay - Pine River - Obstruction; light buoy
Maritime Safety Queensland Notice 398(T)/2023

An obstruction marked by a special light buoy, *Fl.Y.2-5s*, exists in position 27° 16'.48 S 153° 04'.19 E.

Chart temporarily affected - Aus 236

857(T)/2023 AUSTRALIA - TORRES STRAIT - Cook Reef - Scientific instruments southwards
Fugro

Subsurface scientific instruments which may be marked by special light buoys, *Fl.2.5s* or *Fl.3s*, exist in an area bounded by the following positions:

10° 32'.64 S 141° 11'.52 E
10° 44'.20 S 141° 18'.04 E
10° 44'.20 S 141° 30'.39 E
10° 32'.55 S 141° 30'.39 E
10° 32'.55 S 141° 38'.00 E
10° 42'.71 S 141° 38'.00 E
10° 34'.52 S 141° 49'.31 E
10° 31'.11 S 141° 49'.31 E
10° 21'.16 S 141° 28'.59 E
10° 20'.52 S 141° 11'.50 E.

Mariners are advised to navigate with caution in the area.

Chart temporarily affected - Aus 294 - Aus 296 - Aus 301 - Aus 700 - Aus 842

972(T)/2023 AUSTRALIA - QUEENSLAND - Laguna Quays - Shoaling; nav aids
Former Notice - 286(T)/2020 is cancelled
Maritime Safety Queensland Notice 475/2023

Shoaling exists within the entrance channel and waterways around the Laguna Quays Marina (20° 36'.0 S 148° 41'.0 E).

Nav aids marking the entrance channel and in the marina may not be operational.

Mariners are advised to navigate with caution in the area.

Chart temporarily affected - Aus 252

1052(T)/2023 AUSTRALIA - QUEENSLAND - Cairns - Trinity Inlet - Wreck
Maritime Safety Queensland Notice 569(T)/2023

A wreck marked by a special light buoy, *Fl.Y.2-5s*, exists in position 16° 56'.27 S 145° 46'.98 E.

Mariners are advised to navigate with caution in the area.

Chart temporarily affected - Aus 262

17(T)/2024 AUSTRALIA - TORRES STRAIT - Yorke Islands - Scientific instrument
Maritime Safety Queensland Notice 592(T)/2023

A special light buoy, *Fl(5)Y.20s*, exists in position 9° 44'.70 S 143° 24'.29 E.

Chart temporarily affected - Aus 377 - Aus 840

108(T)/2024 AUSTRALIA - QUEENSLAND - Cape Flattery - Scientific instrument
Maritime Safety Queensland Notice 34(T)/2024

A special light buoy, *Fl.Y.2-5s*, exists in position 14° 59'.43 S 145° 20'.93 E.

Chart temporarily affected - Aus 831 - Aus 832

111(T)/2024 AUSTRALIA - QUEENSLAND - Skardon River - Obstruction
Maritime Safety Queensland Notice 40(T)/2024

A lost anchor marked by a special buoy exists in position 11° 42'.35 S 141° 51'.37 E.

Mariners are advised to navigate with caution in the area.

Chart temporarily affected - Aus 301

250(T)/2024 AUSTRALIA - QUEENSLAND - Great Sandy Strait - Light buoys

Former Notice - 219(T)/2024 is cancelled

Maritime Safety Queensland Notice 146/2017, 145(T)/2021, 70/2020

Light buoys exist as follows:

<i>Number</i>	<i>Position</i>	<i>Characteristics</i>
S3	25° 12'.70 S 152° 54'.75 E	Fl.G.2.5s
NG1	25° 20'.20 S 153° 01'.40 E	Fl.G.2.5s.

Chart temporarily affected - Aus 817

281(T)/2024 AUSTRALIA - QUEENSLAND - Brisbane River - Lytton and Quarantine Reach - Light beacon damaged

Maritime Safety Queensland Notice 151(T)/2024

The port lateral light beacon, *Q.Bu & Q.R (Q Day) No6F* (27° 25'.22 S 153° 08'.51 E), is damaged.

The night light, *Q.Bu*, and the day light, *Q*, should not be relied upon for navigation. The night light, *Q.R*, is displaying correctly.

Chart temporarily affected - Aus 237

324(T)/2024 AUSTRALIA - QUEENSLAND - Abbot Point - Bald Hill - Lights altered

Maritime Safety Queensland Notice 175(T)/2024

The light, *WR & Fl.4s 56m 12M (F Day)* (19° 53'.14 S 148° 04'.55 E), has been temporarily altered to *Fl.4s (F Day)*.

Chart temporarily affected - Aus 255 - Aus 826

407(T)/2024 AUSTRALIA - QUEENSLAND - Karumba - Light removed

Maritime Safety Queensland Notice 246(T)/2024

The front leading day light (17° 26'.82 S 140° 45'.52 E) has been temporarily removed.

Chart temporarily affected - Aus 6 - Aus 303

408(T)/2024 AUSTRALIA - QUEENSLAND - North Stradbroke Island - Point Lookout - Scientific instruments

Sydney Institute of Marine Science

Subsurface scientific instruments exist as follows:

<i>Position</i>	<i>Metres below surface</i>
27° 25'.29 S 153° 35'.08 E	50
27° 25'.34 S 153° 34'.57 E	46
27° 25'.37 S 153° 34'.08 E	45
27° 25'.42 S 153° 33'.31 E	36
27° 25'.44 S 153° 33'.31 E	28.

Chart temporarily affected - Aus 236 - Aus 814

409(T)/2024 AUSTRALIA - QUEENSLAND - One Tree Island to Heron Island - Scientific instruments

Sydney Institute of Marine Science

Subsurface scientific instruments exist as follows:

<i>Position</i>	<i>Metres below surface</i>
23° 25'.97 S 151° 55'.61 E	19
23° 26'.20 S 151° 58'.84 E	10
23° 26'.38 S 151° 53'.98 E	9
23° 26'.85 S 151° 54'.74 E	15
23° 28'.26 S 151° 56'.82 E	16
23° 28'.26 S 151° 56'.82 E	8
23° 28'.34 S 151° 58'.69 E	15
23° 28'.76 S 152° 04'.96 E	12

23° 29'.52 S 152° 02'.75 E 16
23° 30'.37 S 152° 02'.43 E 8
23° 30'.52 S 152° 03'.33 E 13
23° 30'.83 S 152° 05'.63 E 18.

Chart temporarily affected - Aus 819

445(T)/2024 AUSTRALIA - QUEENSLAND - Port Douglas - Island Point - Light sectors unreliable

Australian Maritime Safety Authority Auscoast Warning 172/2024

Light sectors emanating from the light, *Fl(4)WR.20s 90m 11/9M* (16° 28'.92 S 145° 28'.02 E), should not be relied upon for safe navigation.

Chart temporarily affected - Aus 830

481(T)/2024 AUSTRALIA - QUEENSLAND - Gladstone - South Trees Inlet - Harbour works

Maritime Safety Queensland Notice 291(T)/2024

Works on the bridge (23° 51'.5 S 151° 18'.3 E) are in progress. Scaffolding has reduced the vertical clearance of the bridge to 1m.

Mariners are advised to navigate with caution in the area.

Chart temporarily affected - Aus 245 - Aus 246

528(T)/2024 AUSTRALIA - QUEENSLAND - Moreton Bay - Chain Banks - Scientific instrument

Maritime Safety Queensland Notice 323(T)/2024

A special light buoy, *Fl.Y.4s*, exists in position 27° 25'.79 S 153° 18'.38 E.

Chart temporarily affected - Aus 236

530(T)/2024 AUSTRALIA - QUEENSLAND - Weipa - Albatross Bay - Mooring buoy

Maritime Safety Queensland

A lit mooring buoy, *Fl.Y.4s*, exists in position 12° 39'.01 S 141° 43'.09 E.

Chart temporarily affected - Aus 4 - Aus 301

561(T)/2024 AUSTRALIA - QUEENSLAND - Moreton Bay - North East Channel - Light buoy off station

Maritime Safety Queensland Notice 338(T)/2024

The port lateral light buoy, *Fl.R.2·5s NE2* (26° 56'.95 S 153° 20'.08 E), is off station.

Chart temporarily affected - Aus 236 - Aus 814 - Aus 815

596(T)/2024 AUSTRALIA - QUEENSLAND - Cleveland Bay - Scientific instruments

Former Notice - 249(T)/2024 is cancelled

Maritime Safety Queensland Notice 387(T)/2024

Special light buoys, *Fl.Y.2·5s*, exist in the following positions:

19° 06'.45 S 146° 32'.48 E
19° 07'.34 S 146° 52'.92 E
19° 09'.32 S 146° 52'.10 E
19° 11'.81 S 146° 49'.07 E
19° 12'.79 S 146° 47'.55 E
19° 13'.58 S 146° 56'.98 E
19° 14'.80 S 146° 48'.90 E.

Mariners are advised to navigate with caution in the area.

Chart temporarily affected - Aus 256 - Aus 827

597(T)/2024 AUSTRALIA - QUEENSLAND - Great Sandy Strait - Moon Point Bank - Wreck

Former Notice - 325(T)/2024 is cancelled
Maritime Safety Queensland Notice 366(T)/2024

A stranded wreck marked by a special light buoy, *Fl. Y.2-5s*, exists in position 25° 13'.57 S 152° 59'.43 E.

Mariners are advised to navigate with caution in the area.

Chart temporarily affected - Aus 817

601(T)/2024 AUSTRALIA - QUEENSLAND - TORRES STRAIT - Alpha Rock to Varzin Passage - Light buoys altered; AIS inoperative

EGS Survey Pty Ltd

The light buoys in the following positions have been altered to *Fl. Y.3s* and the AIS is inoperative:

10° 36'.40 S 142° 30'.70 E

10° 28'.30 S 142° 26'.80 E

10° 31'.20 S 142° 10'.49 E

10° 33'.41 S 141° 59'.50 E

10° 32'.09 S 141° 51'.89 E.

Chart temporarily affected - Aus 292 - Aus 293 - Aus 296 - Aus 700 - Aus 839 - Aus 841

604(T)/2024 AUSTRALIA - TORRES STRAIT - Richardson Reef - Cook Reef - Scientific instruments

CSIRO, Maritime Safety Queensland Notice 377(T)/2024

Subsurface scientific instruments exist as follows:

<i>Position</i>	<i>Metres below surface</i>
-----------------	-----------------------------

10° 09'.57 S 143° 02'.39 E	23.2
----------------------------	------

10° 24'.34 S 141° 07'.25 E	27.6.
----------------------------	-------

Chart temporarily affected - Aus 700 - Aus 839 - Aus 842

677(T)/2024 AUSTRALIA - QUEENSLAND - Brisbane River - Inner Bar Reach - Dredging operations

Maritime Safety Queensland Notice 442(T)/2024

The barge *Ken Harvey* and support vessels are conducting dredging operations in the vicinity of position 27° 22'.96 S 153° 09'.35 E.

The barge will deploy anchors 50m from the barge when dredging is in progress.

The barge will monitor VHF Ch 12.

Mariners are advised to navigate with caution in the area and are requested to pass at slow speed with minimal wash.

Chart temporarily affected - Aus 237

678(T)/2024 AUSTRALIA - QUEENSLAND - Gladstone - South Trees Point - Scientific instruments

Maritime Safety Queensland Notice 430(T)/2024

Special light buoys, *Fl. Y.*, exist in positions 23° 51'.36 S 151° 19'.32 E and 23° 50'.98 S 151° 17'.19 E.

Chart temporarily affected - Aus 245 - Aus 246

709(T)/2024 AUSTRALIA - QUEENSLAND - Moreton Bay - Peel Island - Wreck

Maritime Safety Queensland Notice 459(T)/2024

A wreck marked by a special light buoy, *Fl. Y.2-5s*, exists in position 27° 28'.91 S 153° 17'.47 E.

Mariners are advised to navigate with caution in the area.

Chart temporarily affected - Aus 814

711(T)/2024 AUSTRALIA - QUEENSLAND - Yorkeys Knob - Shoaling; light buoy

Maritime Safety Queensland Notice 444(T)/2024

Shoaling exists at the entrance to the marina and is marked by a special light buoy, *Fl. Y.2-5s*, in position 16° 48'.02 S 145° 43'.01 E.

Mariners are advised to navigate with caution in the area.

Chart temporarily affected - Aus 262

742(T)/2024 AUSTRALIA - QUEENSLAND - Brisbane River - Hamilton Reach - Light buoys; harbour works

Maritime Safety Queensland Notice 474(T)/2024

Special light buoys, which mark a construction zone, exist as follows:

<i>Position</i>	<i>Remarks</i>
27° 26'.51 S 153° 04'.01 E	<i>Fl. Y.2s</i>
27° 26'.47 S 153° 03'.73 E	<i>Fl. Y.3s.</i>

Mariners are advised to navigate with caution in the area.

Chart temporarily affected - Aus 237

743(T)/2024 AUSTRALIA - QUEENSLAND - Cairns - Trinity Inlet - Wreck

Maritime Safety Queensland Notice 467(T)/2024

A stranded wreck marked by a special light buoy, *Fl. Y.2-5s*, exists in position 16° 56'.90 S 145° 47'.19 E.

Mariners are advised to navigate with caution in the area.

Chart temporarily affected - Aus 262

744(T)/2024 AUSTRALIA - QUEENSLAND - Townsville - Dredging operations; bed levelling operations

Maritime Safety Queensland Notice 470(T)/2022

The dredge *Brisbane* is conducting dredging operations in the Sea Channel, Platypus Channel and swing basins.

The vessel *Titan* will be conducting bed levelling operations in the Platypus Channel and Sea Channel.

Vessels will display appropriate lights and shapes and monitor VHF Ch 16.

Mariners are advised to navigate with caution in the area and keep well clear.

Chart temporarily affected - Aus 256 - Aus 827

NORTHERN TERRITORY

211(T)/2021 AUSTRALIA - NORTHERN TERRITORY - Darwin - East Arm - Scientific instruments
Department of Infrastructure, Planning and Logistics NT Notice 21(T)/2019

Special light buoys, *Fl(5)20s*, exist in positions 12° 30'.22 S 130° 54'.24 E and 12° 30'.20 S 130° 54'.20 E.

Chart temporarily affected - Aus 26

183(T)/2022 INDIAN OCEAN - Christmas Island - Mooring buoy off station
L Mioceovich

The mooring buoy (10° 25'.92 S 105° 39'.5 E) is off station and is currently in position 10° 26'.48 S 105° 39'.45 E.

Chart temporarily affected - Aus 920

678(T)/2023 AUSTRALIA - NORTHERN TERRITORY - Goodrich Bank - Light buoy off station northwestwards
Australian Bureau of Meteorology

The special light buoy, *Fl(5)Y.20s* (10° 19'.19 S 129° 57'.15 E), is off station.

Chart temporarily affected - Aus 310

867(T)/2023 INDIAN OCEAN - Roo Rise - Light buoy off station
Australian Bureau of Meteorology

The special light buoy, *Fl.Y.2s* (12° 19'.20 S 108° 30'.75 E), is off station.

Chart temporarily affected - Aus 4708 (INT 708) - Aus 4723 (INT 723)

893(T)/2023 AUSTRALIA - NORTHERN TERRITORY - Darwin - Mooring buoy off station
Sea Swift

The lit mooring buoy, *Fl.Y.2.5s* (12° 25'.10 S 130° 47'.74 E), is off station.

Chart temporarily affected - Aus 25

904(T)/2023 INDIAN OCEAN - Cocos Islands - Light buoy
LINX

A special light buoy, *Fl.Y.2.5s*, exists in position 12° 08'.65 S 96° 51'.95 E.

Chart temporarily affected - Aus 607

158(T)/2024 AUSTRALIA - TIMOR SEA - Evans Shoal - Subsea operations eastwards
Santos

On or about 18 February 2024, vessels will be conducting subsea operations in an area bound by the following positions:

9° 52'.72 S 130° 11'.86 E

9° 52'.69 S 130° 19'.18 E

9° 47'.26 S 130° 19'.16 E

9° 47'.29 S 130° 11'.84 E.

Mariners are advised to navigate with caution in the area.

Chart temporarily affected - Aus 310

328(T)/2024 AUSTRALIA - NORTHERN TERRITORY - Darwin - Scientific instruments
O2 Marine

Special light buoys, *Fl.Y.4s*, exist in the following positions:

12° 23'.34 S 130° 39'.82 E

12° 23'.46 S 130° 48'.64 E
12° 23'.78 S 130° 44'.15 E
12° 24'.54 S 130° 45'.06 E
12° 25'.95 S 130° 48'.92 E
12° 26'.16 S 130° 46'.22 E
12° 28'.20 S 130° 46'.08 E
12° 29'.26 S 130° 47'.99 E
12° 30'.09 S 130° 52'.49 E
12° 32'.91 S 130° 52'.51 E.

Chart temporarily affected - Aus 25 - Aus 26

369(T)/2024 AUSTRALIA - TIMOR SEA - Sahul Banks - FPSO unit
Petrofac Australia

The FPSO (10° 36'.89 S 125° 59'.13 E) is unlit.

Chart temporarily affected - Aus 312

411(T)/2024 AUSTRALIA - TIMOR SEA - Evans Shoal - Drill rig eastwards
Former Notice - 69(T)/2024 is cancelled
MODU *Valaris MS-1*

Drill rig *Valaris MS-1* is conducting drilling operations in position 9° 52'.12 S 130° 13'.73 E.

Chart temporarily affected - Aus 310

489(T)/2024 AUSTRALIA - NORTHERN TERRITORY - Darwin - LNG Terminal - Light buoys
Northern Territory Government Notice 31(T)/2024

Special light buoys, *Fl. Y*, exist in positions 12° 31'.80 S 130° 50'.97 E and 12° 31'.60 S 130° 51'.58 E.

Chart temporarily affected - Aus 26

492(T)/2024 AUSTRALIA - TIMOR SEA - Flat Top Bank - Drill rig southwestwards
INPEX

On or about 28 June 2024, drill rig *Valaris 247* will be conducting drilling operations in positions 12° 47'.27 S 128° 46'.44 E and 12° 44'.97 S 128° 38'.06 E.

Chart temporarily affected - Aus 315 - Aus 316

532(T)/2024 AUSTRALIA - NORTHERN TERRITORY - Apsley Strait - Medina Inlet - Light buoys off station
Former Notice - 293(T)/2024 is cancelled
Northern Territory Government Notice 11(T)/2024

The following light buoys are off station:

<i>Position</i>	<i>Remarks</i>
11° 45'.85 S 130° 39'.80 E	<i>Fl. R. 4s</i>
11° 46'.36 S 130° 39'.99 E	<i>Fl. R. 4s</i>
11° 51'.65 S 130° 35'.07 E	<i>Fl. G. 4s.</i>

Chart temporarily affected - Aus 23

565(T)/2024 AUSTRALIA - NORTHERN TERRITORY - Groote Eylandt - Milner Bay - Harbour works; exclusion zone; light unlit

Former Notice - 368(T)/2024 is cancelled
Northern Territory Government Notice 13/2024

Works are in progress to repair the main wharf. An exclusion zone exists in an area bounded by the following:

<i>Position</i>	<i>Remarks</i>
13° 51'.56 S 136° 25'.03 E	
13° 51'.67 S 136° 25'.03 E	
13° 51'.73 S 136° 25'.06 E	marked by special light buoy, <i>Fl. Y. 2s</i>
13° 51'.80 S 136° 24'.96 E	marked by special light buoy, <i>Fl. Y. 2s</i>

13° 51'.57 S 136° 24'.82 E marked by special light buoy, *Fl.Y.2s*
13° 51'.51 S 136° 24'.92 E marked by special light buoy, *Fl.Y.2s*.

Only vessels involved in construction activities, vessels under the control of Milner Port, the Director of Marine Safety and the NT Police are permitted to enter the area.

The light, *F.R* (13° 51'.55 S 136° 24'.92 E), is unlit.

Mariners are advised to navigate with caution in the area.

Chart temporarily affected - Aus 14

607(T)/2024 AUSTRALIA - NORTHERN TERRITORY - Darwin - Scientific instruments

Northern Territory Government Notice 52(T)/2024

Special light buoys, *Fl.Y.5s*, exist in the following positions:

12° 24'.48 S 130° 42'.28 E
12° 25'.54 S 130° 45'.46 E
12° 25'.68 S 130° 46'.11 E
12° 26'.73 S 130° 46'.29 E
12° 27'.31 S 130° 48'.66 E
12° 27'.66 S 130° 46'.14 E.

Chart temporarily affected - Aus 25 - Aus 26

680(T)/2024 AUSTRALIA - NORTHERN TERRITORY - Darwin - Scientific instruments

Former Notice - 610(T)/2024 is cancelled

Northern Territory Government Notice 68(T)/2024, 69(T)/2024

Special light buoys, *Fl.Y.1-5s*, exist in the following positions:

12° 29'.50 S 130° 53'.75 E
12° 29'.67 S 130° 53'.80 E
12° 29'.67 S 130° 54'.15 E
12° 29'.42 S 130° 54'.14 E.

Special light buoys, *Fl.Y.4s*, exist in the following positions:

12° 29'.61 S 130° 53'.75 E
12° 29'.48 S 130° 54'.15 E.

Chart temporarily affected - Aus 26

681(T)/2024 AUSTRALIA - NORTHERN TERRITORY - Darwin - Survey operations; dredging operations

Former Notice - 651(T)/2024 is cancelled

Northern Territory Government Notice 57/2024, 71/2024

Vessel *Edendrach* is conducting survey operations in an area bounded by the following positions:

12° 30'.23 S 130° 53'.46 E
12° 30'.22 S 130° 54'.29 E
12° 29'.36 S 130° 54'.28 E
12° 29'.36 S 130° 53'.46 E.

The dredge *Arnhem* is conducting dredging operations in the area. A submerged and floating pipeline marked by special light buoys, *Fl.Y.4s*, will extend from the dredge to the shoreline.

Mariners are advised to navigate with caution in the area.

Chart temporarily affected - Aus 26

713(T)/2024 AUSTRALIA - TIMOR SEA - Sahul Banks - Subsea operations southwards

Sapura Energy Australia

Vessel *Sapura Constructor* and a ROV is conducting subsea operations associated with the decommissioning of the Laminaria (10° 37'.81 S 126° 02'.05 E) and Corallina (10° 35'.45 S 125° 59'.19 E) fields.

Mariners are advised to navigate with caution in the area. 0.27M clearance requested.

Chart temporarily affected - Aus 312

750(T)/2024 AUSTRALIA - NORTHERN TERRITORY - Darwin to Shepparton Shoal - Survey operations; subsea operations

Fugro

Vessel *Fugro Kwilena*, support vessel *Total Response* and an ROV are conducting survey and construction operations adjacent to the existing pipeline between positions 12° 31'.54 S 130° 51'.69 E and 12° 01'.40 S 129° 54'.46 E.

Vessels will monitor VHF Ch 10 and 16.

Mariners are advised to navigate with caution in the area.

Note: For e-notice users, please see full edition for map.

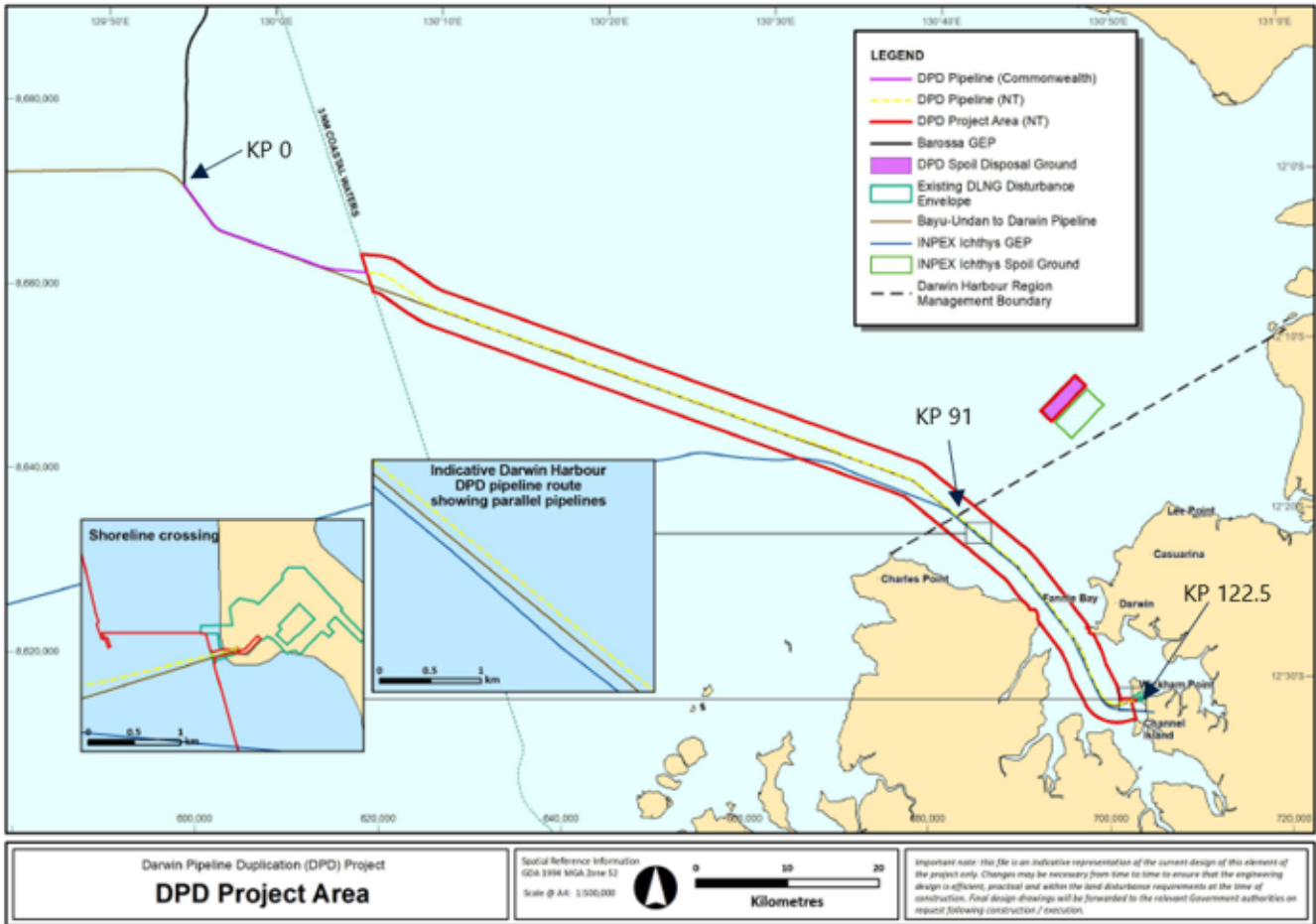


Chart temporarily affected - Aus 25 - Aus 26 - Aus 309 - Aus 316

WESTERN AUSTRALIA

1078(P)/2015 AUSTRALIA - WESTERN AUSTRALIA - East Holothuria Reef - Shoaling HMAS Mermaid

Depths less than 6m have been reported in the vicinity of position 13° 33'.6 S 126° 10'.8 E.

Mariners are advised to navigate with caution in the area.

Chart which will be affected - Aus 318 - Aus 319 - Aus 727 - Aus 728

291(T)/2019 AUSTRALIA - WESTERN AUSTRALIA - Barrow Island - Well abandonment works northwestwards Chevron Australia

Sixteen anchors and mooring lines have been installed around the well in position 20° 24'.49 S 114° 50'.95 E.

Mariners are advised to navigate with caution in the area.

Chart temporarily affected - Aus 328

1285(T)/2019 AUSTRALIA - WESTERN AUSTRALIA - Port Walcott - Outer North Channel - Tide gauge Australian Maritime Safety Authority Auscoast Warning 288/2016

A tide gauge marked by a special light buoy, Q, exists in position 20° 24'.95 S 117° 23'.35 E.

Chart temporarily affected - Aus 55 - Aus 326

212(T)/2020 AUSTRALIA - WESTERN AUSTRALIA - Rottnest Island - Scientific instruments northwestwards CSIRO

Subsurface scientific instruments exist as follows:

<i>Position</i>	<i>Depth below surface</i>
31° 38'.8 S 115° 11'.8 E	24m
31° 43'.7 S 115° 02'.5 E	23m
31° 45'.9 S 114° 57'.9 E	496m
31° 59'.0 S 115° 13'.7 E	180m
31° 59'.4 S 115° 23'.1 E	22m
32° 00'.0 S 115° 25'.0 E	46m

Chart temporarily affected - Aus 754

404(T)/2021 AUSTRALIA - WESTERN AUSTRALIA - Koolan Island - Mooring buoy Trinacria Consulting

The mooring buoy (16° 09'.15 S 123° 45'.05 E) has sunk in position.

Chart temporarily affected - Aus 40 - Aus 41

647(T)/2021 AUSTRALIA - WESTERN AUSTRALIA - Ashburton Island - Scientific instrument northwards Pilbara Ports Authority Notice A9(T)/2021

A subsurface scientific instrument, with a least depth of 11m, exists in position 21° 32'.43 S 114° 56'.01 E.

Chart temporarily affected - Aus 64 - Aus 328 - Aus 743 - Aus 744

987(P)/2021 AUSTRALIA - WESTERN AUSTRALIA - Bonaparte Archipelago - D'Arcole Islands to Augereau Island - Shoaling European Space Agency

In and around the D'Arcole Islands (14° 54'.97 S 124° 44'.43 E) and Augereau Island (14° 45'.33 S 125° 07'.78 E) latest survey shows the existence of numerous shoaler depths than those charted.

The most significant shoals are as follows:

<i>Position</i>	<i>Depth</i>
14° 43'.71 S 125° 04'.91 E	6.7m
14° 44'.82 S 125° 05'.02 E	9.7m
14° 45'.05 S 125° 05'.55 E	8.9m
14° 49'.37 S 125° 07'.51 E	7.4m
14° 52'.96 S 124° 43'.51 E	1.0m
14° 54'.01 S 124° 44'.13 E	3.3m
14° 55'.03 S 124° 39'.57 E	1.8m
14° 56'.09 S 124° 43'.45 E	3.6m
14° 57'.10 S 124° 39'.44 E	1.2m
14° 57'.22 S 124° 46'.19 E	1.8m
14° 57'.83 S 124° 39'.85 E	0.9m
15° 00'.80 S 124° 37'.79 E	3.7m.

Mariners are advised to navigate with caution in the area.

Charts will be updated in due course.

Chart which will be affected - Aus 37 - Aus 320 - Aus 729 - Aus 730

1075(T)/2021 AUSTRALIA - WESTERN AUSTRALIA - Port of Ashburton - Scientific instrument
Pilbara Ports Authority Notice A14(T)/2021

A scientific instrument exists on the seabed in position 21° 40'.45 S 115° 01'.35 E.

Chart temporarily affected - Aus 64 - Aus 743

287(T)/2022 AUSTRALIA - WESTERN AUSTRALIA - Bundegi Reef - Scientific instrument
Department of Transport WA Notice 792/2022

A special light buoy, *Fl.Y.2.5s*, exists in position 21° 52'.15 S 114° 12'.23 E.

Chart temporarily affected - Aus 328 - Aus 329 - Aus 744 - Aus 745

509(T)/2022 AUSTRALIA - WESTERN AUSTRALIA - Trigg Island - Scientific instruments westwards
Former Notice - 498(T)/2020 is cancelled
Department of Transport WA Notice 66/2020

Special light buoys exist as follows:

<i>Position</i>	<i>Remarks</i>
31° 52'.70 S 115° 43'.11 E	Q(5)Y.20s
31° 52'.59 S 115° 43'.12 E	Q(5)Y.20s
31° 52'.53 S 115° 43'.32 E	Fl.Y.5s.

Chart temporarily affected - Aus 112

623(T)/2022 AUSTRALIA - WESTERN AUSTRALIA - Bunbury - Koombana Bay - Harbour works
Department of Transport WA Notice 1852/2022

On or about 17 August 2022, works associated with the demolition and construction of the boat ramp in the vicinity of position 33° 18'.71 S 115° 38'.28 E will commence.

The works area will be marked by special light buoys.

The barge *TMC1* and support vessels will be conducting piling operations and unlit piles may exist in the area.

All vessels will display appropriate lights and shapes and will monitor VHF Ch 16.

The boat ramp will be closed for the duration of the works.

Mariners are advised to navigate with caution in the area.

Chart temporarily affected - Aus 115

1032(T)/2022 AUSTRALIA - WESTERN AUSTRALIA - Geographe Bay - Scientific instruments
Former Notice - 800(T)/2022 is cancelled

Department of Transport WA Notice 2792/2022

Special light buoys, *Fl.Y.2-5s*, exist in the following positions:

33° 35'.49 S 115° 06'.99 E

33° 36'.01 S 115° 14'.99 E

33° 37'.62 S 115° 20'.28 E.

Chart temporarily affected - Aus 755

1036(T)/2022 AUSTRALIA - WESTERN AUSTRALIA - Mullaloo - Scientific instruments

Department of Transport WA Notice 5463/2022

Scientific instruments, 4m below the surface, exist in positions 31° 45'.82 S 115° 42'.64 E and 31° 47'.43 S 115° 42'.34 E.

Chart temporarily affected - Aus 754

1039(T)/2022 AUSTRALIA - WESTERN AUSTRALIA - South West Break to Staggy Reef - Scientific instruments

Department of Transport WA Notice 5456/2022

Scientific instruments, 4m below the surface, exist in the following positions:

31° 34'.33 S 115° 35'.61 E

31° 38'.12 S 115° 38'.07 E

31° 42'.36 S 115° 38'.93 E.

Chart temporarily affected - Aus 754

40(T)/2023 AUSTRALIA - WESTERN AUSTRALIA - Port Hedland to Cuvier Abyssal - Cable laying operations

Gulf Agency Company (Australia)

Vessel *Ile De Re* is conducting cable laying operations between the following positions:

19° 54'.55 S 118° 36'.45 E

19° 13'.78 S 116° 42'.60 E

19° 32'.49 S 114° 00'.63 E

20° 06'.88 S 111° 08'.88 E

20° 52'.12 S 109° 41'.39 E.

Mariners are advised to navigate with caution in the area. 1M clearance requested.

Note: For e-notice users, please see full edition for map

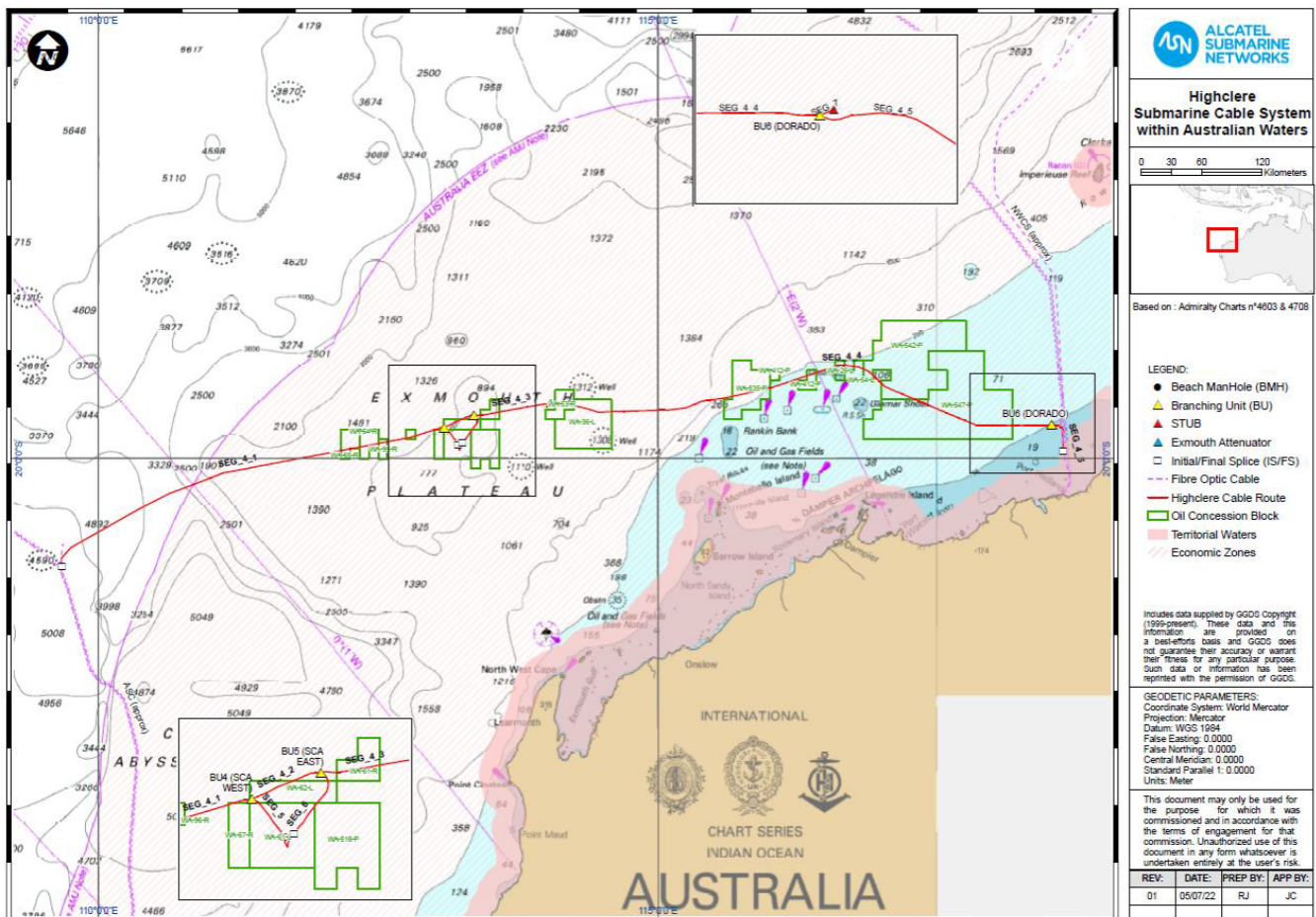


Chart temporarily affected - Aus 53 - Aus 326 - Aus 327 - Aus 328 - Aus 4070 (INT 70) - Aus 4071 (INT 71) - Aus 4603 (INT 603) - Aus 4708 (INT 708) - Aus 4722 (INT 722) - Aus 4723 (INT 723)

293(T)/2023 AUSTRALIA - WESTERN AUSTRALIA - Dampier Archipelago - Legendre Island - Scientific instrument northwards

Former Notice - 366(T)/2022 is cancelled
O2 Marine

A scientific instrument exists on the seabed in position 20° 17'.89 S 116° 51'.58 E.

Chart temporarily affected - Aus 57 - Aus 327

367(T)/2023 AUSTRALIA - WESTERN AUSTRALIA - Gantheaume Bay - Scientific instrument northwestwards
GHD

A subsurface scientific instrument, 0.5m above the seabed, exists in position 27° 26.89' S 113° 56.97' E.

Chart temporarily affected - Aus 332

455(T)/2023 AUSTRALIA - WESTERN AUSTRALIA - Dampier Archipelago - Madeleine Shoals - Wreck
Australian Maritime Safety Authority

A wreck exists in position 20° 18'.46 S 116° 53'.98 E.

Mariners are advised to navigate with caution in the area.

Chart temporarily affected - Aus 57 - Aus 327

535(T)/2023 AUSTRALIA - WESTERN AUSTRALIA - Bonaparte Archipelago - Bernouilli Island - Obstruction
Australian Maritime Safety Authority

An obstruction has been reported in position 14° 59'.56 S 124° 45'.49 E.

Mariners are advised to navigate with caution in the area.

Chart temporarily affected - Aus 730

538(T)/2023 AUSTRALIA - WESTERN AUSTRALIA - Port of Ashburton - Harbour works

Former Notice - 417(T)/2023 is cancelled

Pilbara Ports Authority Notice A8(T)/2023, A10(T)/2023

Vessels *Pilbara SEMP*, *Pilbara 100*, *Keller Ocean* and *Magestic* are conducting works associated with the construction of a trestle, jetty and associated infrastructure in the vicinity of position 21° 41'.02 S 115° 00'.68 E.

All vessels will display appropriate lights and shapes and will monitor VHF Ch 14 and Ch 16.

A lit mooring buoy, *Fl.Y.3s*, exists in position 21° 39'.77 S 115° 01'.44 E.

Mariners are advised to stay well clear of the mooring buoy and to navigate with caution in the area.

Chart temporarily affected - Aus 64

579(T)/2023 AUSTRALIA - WESTERN AUSTRALIA - Port Hedland - Spoil Bank - Light beacon installation works

Pilbara Ports Authority Notice PH11(T)/2023

Barge *SMC 9* and support vessels *Hedland 5* and *Hedland 6* are conducting works to install new light beacons.

The new light beacons will be installed as follows:

<i>Position</i>	<i>Remarks</i>
20° 17'.90 S 118° 35'.25 E	port lateral light beacon, <i>Fl.R.5s</i>
20° 17'.90 S 118° 35'.27 E	starboard lateral light beacon, <i>Fl.G.5s</i>
20° 18'.01 S 118° 35'.21 E	port lateral light beacon, <i>Fl.R.5s</i>
20° 18'.01 S 118° 35'.23 E	starboard lateral light beacon, <i>Fl.G.5s</i>
20° 18'.16 S 118° 35'.20 E	port lateral light beacon, <i>Fl.R.5s</i>
20° 18'.16 S 118° 35'.21 E	starboard lateral light beacon, <i>Fl.G.5s</i>
20° 18'.22 S 118° 35'.21 E	port lateral light beacon, <i>Fl.R.5s</i>
20° 18'.20 S 118° 35'.22 E	starboard lateral light beacon, <i>Fl.G.5s</i>
20° 18'.27 S 118° 35'.25 E	port lateral light beacon, <i>Fl.R.5s</i>
20° 18'.24 S 118° 35'.28 E	starboard lateral light beacon, <i>Fl.G.5s</i>
20° 18'.33 S 118° 35'.32 E	port lateral light beacon, <i>Fl.R.5s</i>

The vessels will display appropriate lights and shapes.

Mariners are advised to navigate with caution in the area.

Chart temporarily affected - Aus 53

625(T)/2023 AUSTRALIA - WESTERN AUSTRALIA - Kalbarri - Scientific instrument

Department of Transport WA Notice 5748(T)/2023

A subsurface scientific instrument, 0.66m above the seabed, exists in position 27° 24'.70 S 114° 02'.79 E.

Chart temporarily affected - Aus 332

627(T)/2023 AUSTRALIA - WESTERN AUSTRALIA - Lagrange Bay - Scientific instruments

Department of Transport WA Notice 5749(T)/2023

Subsurface scientific instruments exist in the following positions:

18° 35'.12 S 121° 44'.06 E
18° 35'.54 S 121° 44'.98 E
18° 35'.85 S 121° 45'.81 E
18° 36'.01 S 121° 43'.89 E
18° 36'.43 S 121° 46'.98 E
18° 36'.48 S 121° 47'.17 E
18° 36'.49 S 121° 42'.92 E
18° 36'.57 S 121° 46'.91 E
18° 36'.59 S 121° 45'.45 E
18° 37'.00 S 121° 44'.32 E

18° 37'.00 S 121° 46'.69 E
18° 37'.05 S 121° 46'.95 E
18° 37'.20 S 121° 46'.31 E
18° 37'.25 S 121° 47'.09 E
18° 37'.66 S 121° 45'.68 E
18° 37'.81 S 121° 43'.16 E
18° 38'.06 S 121° 44'.56 E
18° 38'.53 S 121° 46'.45 E
18° 38'.72 S 121° 45'.65 E
18° 38'.83 S 121° 46'.83 E
18° 39'.12 S 121° 44'.44 E
18° 39'.15 S 121° 43'.16 E
18° 39'.47 S 121° 46'.19 E
18° 39'.76 S 121° 45'.30 E.

Mariners are advised to navigate with caution in the area.

Chart temporarily affected - Aus 324

630(T)/2023 AUSTRALIA - WESTERN AUSTRALIA - Torbay to King George Sound - Scientific instruments
Department of Transport WA Notice 5742/2023

Scientific instruments marked by special light buoys, *Fl. Y.3s*, exist in the following positions:

35° 04'.92 S 117° 49'.18 E
35° 05'.38 S 117° 57'.75 E
35° 05'.45 S 117° 57'.76 E.

Chart temporarily affected - Aus 118

679(T)/2023 AUSTRALIA - WESTERN AUSTRALIA - Browse Island - Accommodation vessel northwestwards
Australian Maritime Safety Authority

Vessel *Floatel Triumph* is moored in position 13° 47'.0 S 123° 13'.0 E.

Chart temporarily affected - Aus 319 - Aus 320

721(T)/2023 AUSTRALIA - WESTERN AUSTRALIA - Thevenard Island - Platform unlit southwards
Pilbara Ports Authority Notice A12(T)/2023

The *Cowle* platform, *Mo(U)10s* (21° 31'.33 S 114° 58'.16 E), is unlit.

Chart temporarily affected - Aus 64 - Aus 328 - Aus 743 - Aus 744 - Aus 4723 (INT 723)

767(T)/2023 AUSTRALIA - WESTERN AUSTRALIA - Carnarvon - Obstructions
Department of Transport WA Notice 5769/2023

Pylons, 30cm below the surface, exist in the vicinity of position 24° 54'.35 S 113° 38'.61 E.

Mariners are advised to navigate with caution in the area.

Chart temporarily affected - Aus 73

770(T)/2023 AUSTRALIA - WESTERN AUSTRALIA - Geraldton - Harbour works
Mid West Ports Notice 9/2023

Construction works are in progress in the vicinity of position 28° 46'.40 S 114° 36'.19 E.

Special light buoys exist in the following positions:

28° 46'.37 S 114° 36'.19 E
28° 46'.38 S 114° 36'.20 E
28° 46'.43 S 114° 36'.21 E
28° 46'.44 S 114° 36'.19 E.

Mariners are advised to navigate with caution in the area.

Chart temporarily affected - Aus 81

774(T)/2023 AUSTRALIA - WESTERN AUSTRALIA - Rottnest Island - Thomson Bay - Rock
Department of Transport WA Notice 5796/2023

A rock outcrop has been reported in position 31° 59'.82 S 115° 32'.64 E.

Mariners are advised to navigate with caution in the area.

Chart temporarily affected - Aus 112

820(T)/2023 AUSTRALIA - WESTERN AUSTRALIA - Browse Island - Light altered northwestwards
Australian Maritime Safety Authority Auscoast Warning 213/2023

The light, *Mo(U)15s 15M* (13° 56'.37 S 123° 17'.87 E), has been temporarily altered to *Mo(U)15s 10M*.

Chart temporarily affected - Aus 319 - Aus 320 - Aus 4603 (INT 603) - Aus 4722 (INT 722)

822(T)/2023 AUSTRALIA - WESTERN AUSTRALIA - Dampier - Mermaid Sound - Scientific instrument
Pilbara Ports Authority Notice D23(T)/2023

A special light buoy, *Fl(5)Y.20s*, exists in position 20° 30'.81 S 116° 45'.56 E.

Chart temporarily affected - Aus 57

864(T)/2023 AUSTRALIA - WESTERN AUSTRALIA - Thevenard Island - Scientific instrument northwestwards
Fugro

A special light buoy, *Fl(5)Y.20s*, exists in position 21° 11'.58 S 114° 40'.08 E.

Chart temporarily affected - Aus 328 - Aus 743 - Aus 744

900(T)/2023 AUSTRALIA - WESTERN AUSTRALIA - Lowendal Islands - Light altered
Santos

The light, *Fl.3s* (20° 38'.04 S 115° 34'.34 E), has been temporarily altered to *Fl.Y.2·5s*.

Chart temporarily affected - Aus 65 - Aus 742

942(T)/2023 AUSTRALIA - WESTERN AUSTRALIA - Barrow Island - Whites Beach - Subsea operations
Bhagwan Marine

Diving and ROV operations are in progress in an area, marked by special buoys, bounded by the following positions:

20° 41'.43 S 115° 24'.16 E

20° 41'.62 S 115° 24'.66 E

20° 41'.17 S 115° 24'.85 E

20° 40'.97 S 115° 24'.35 E.

Mariners are advised to navigate with caution in the area.

Chart temporarily affected - Aus 65 - Aus 742

944(T)/2023 AUSTRALIA - WESTERN AUSTRALIA - Cape Leveque - Survey operations
Former Notice - 895(T)/2023 is cancelled
MMA Offshore

Survey operations are in progress in an area bounded by the following positions:

16° 40'.12 S 122° 30'.96 E

16° 35'.58 S 122° 29'.61 E

16° 20'.05 S 122° 45'.00 E

16° 13'.78 S 122° 45'.24 E

16° 13'.78 S 122° 53'.34 E

16° 16'.24 S 122° 58'.46 E

16° 20'.05 S 122° 54'.21 E

16° 19'.61 S 123° 03'.04 E

16° 31'.48 S 122° 49'.34 E
16° 30'.76 S 122° 41'.09 E.

Tide gauges, marked by special buoys, exist in the following positions:

16° 14'.0 S 122° 47'.7 E
16° 16'.1 S 122° 57'.9 E
16° 21'.0 S 122° 51'.6 E
16° 22'.1 S 122° 58'.8 E
16° 22'.4 S 122° 43'.4 E
16° 29'.5 S 122° 51'.0 E
16° 30'.0 S 122° 35'.7 E
16° 30'.5 S 122° 43'.2 E
16° 39'.6 S 122° 31'.2 E.

Mariners are advised to navigate with caution in the area.

Chart temporarily affected - Aus 323 - Aus 732 - Aus 733

978(P)/2023 AUSTRALIA - WESTERN AUSTRALIA - Cape Leeuwin - Historic wreck southwards

Australian Hydrographic Office

Latest survey indicates that the charted historic wreck in position 34° 25'.36 S 115° 08'.24 E is out of position and the actual position is 34° 25'.26 S 115° 08'.34 E.

Charts will be updated in due course.

Chart which will be affected - Aus 116

980(T)/2023 AUSTRALIA - WESTERN AUSTRALIA - Hilarys Boat Harbour - Light buoy damaged and unlit

Department of Transport WA Notice 5860/2023

The special light buoy, *Fl.Y.5s* (31° 49'.89 S 115° 44'.31 E), is damaged and unlit.

Chart temporarily affected - Aus 754

981(P)/2023 AUSTRALIA - WESTERN AUSTRALIA - Karrakatta Rock - Historic wreck

MMA Offshore

Latest survey indicates that the charted historic wreck in position 16° 21'.28 S 123° 02'.12 E is out of position and the actual position is 16° 20'.47 S 123° 02'.49 E.

Charts will be updated in due course.

Chart which will be affected - Aus 732 - Aus 733

982(T)/2023 AUSTRALIA - WESTERN AUSTRALIA - Mermaid Reef - Scientific instrument

The University of Western Australia

A special light buoy, *Fl.Y.2.5s*, exists in position 17° 05'.57 S 119° 35'.34 E.

Chart temporarily affected - Aus 325

1023(T)/2023 AUSTRALIA - WESTERN AUSTRALIA - Fremantle - Deepwater Channel - Scientific instrument

Department of Transport WA Notice 5873/2023

A special light buoy, *Fl(5)Y.20s*, exists in position 31° 58'.68 S 115° 41'.22 E.

Chart temporarily affected - Aus 112

1062(T)/2023 AUSTRALIA - WESTERN AUSTRALIA - Carnarvon - Light beacon unlit

Department of Transport WA Notice 5843/2023

The light beacon, *Iso.4s 4M* (24° 54'.18 S 113° 38'.39 E), is unlit.

Chart temporarily affected - Aus 73

1063(T)/2023 AUSTRALIA - WESTERN AUSTRALIA - Cockburn Sound - Kwinana - Scientific instruments
 Fremantle Ports Notice 5(T)/2023

Subsurface scientific instruments, 8m below the surface, exist in positions 32° 11'.88 S 115° 45'.36 E and 32° 11'.94 S 115° 45'.42 E.

Chart temporarily affected - Aus 117

1065(T)/2023 AUSTRALIA - WESTERN AUSTRALIA - Fremantle - Arthur Head - Scientific instrument
 Department of Transport WA Notice 5895/2023

A subsurface scientific instrument, 5.5m below the surface, exists in positions 32° 03'.31 S 115° 44'.16 E.

Chart temporarily affected - Aus 112 - Aus 117

25(T)/2024 AUSTRALIA - WESTERN AUSTRALIA - Dampier Archipelago - Brigadier Islands - Light buoy northwards

MetOcean

A special light buoy, *F(5)Y.20s*, exists in position 20° 16'.78 S 116° 33'.71 E.

Chart temporarily affected - Aus 327 - Aus 742

27(T)/2024 AUSTRALIA - WESTERN AUSTRALIA - Exmouth Plateau to Dampier - Pipe laying operations
 Subsea 7

Vessel *Seven Oceanic* is conducting pipe laying operations in the Scarborough Field between approximate positions 19° 45'.0 S 113° 07'.0 E and 20° 15'.0 S 116° 28'.0 E.

Mariners are advised to navigate with caution in the area. 0.27M clearance requested.

Note: For e-notice users, please see full edition for map.

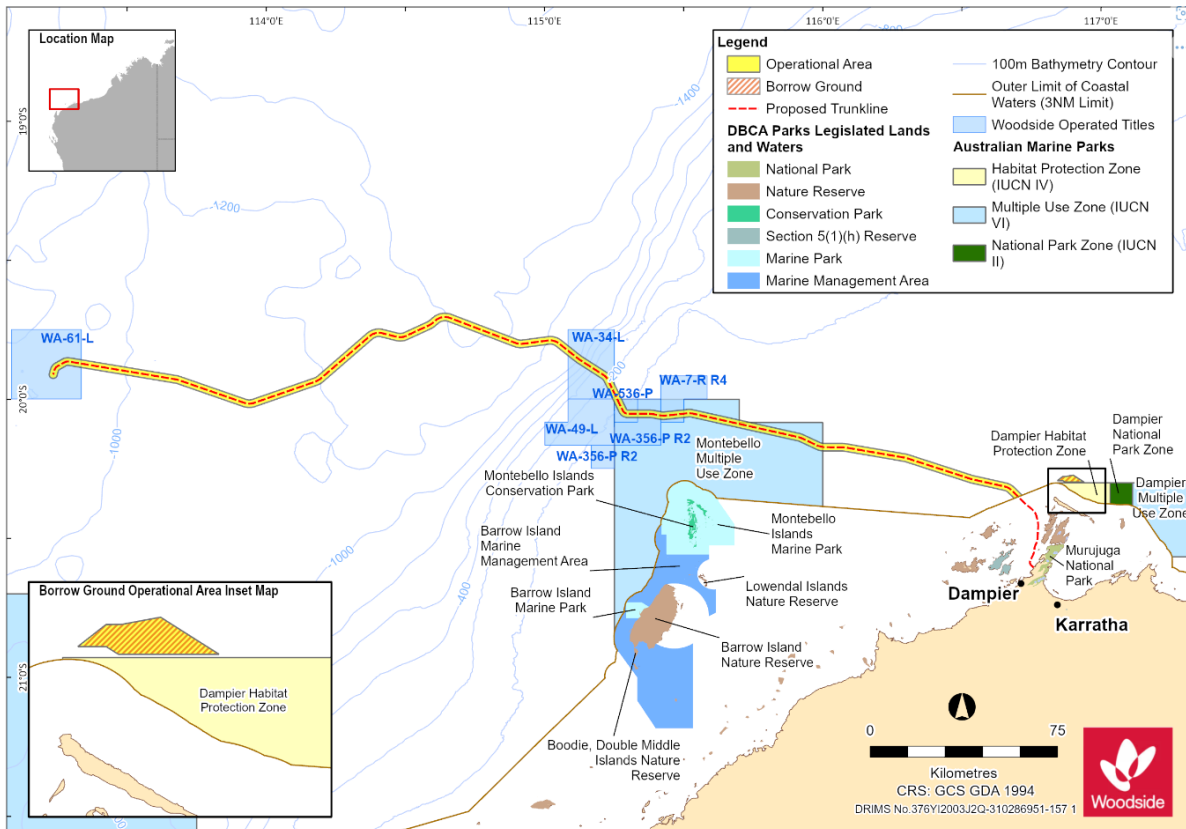


Chart temporarily affected - Aus 327 - Aus 328 - Aus 742 - Aus 4722 (INT 722) - Aus 4723 (INT 723)

28(T)/2024 AUSTRALIA - WESTERN AUSTRALIA - Kalbarri - Scientific instrument
RPS Group

A special light buoy, Q(5)Y.20s, exists in position 27° 24'.16 S 114° 03'.01 E.

Chart temporarily affected - Aus 332

31(T)/2024 AUSTRALIA - WESTERN AUSTRALIA - Laurance Reef to Quinns Rocks - Scientific instruments
Department of Transport WA Notice 5902/2023

Special light buoys, Fl.Y.2·5s, exist in the following positions:

31° 39'.60 S 115° 39'.88 E

31° 40'.63 S 115° 40'.24 E

31° 33'.28 S 115° 37'.30 E.

Chart temporarily affected - Aus 754

33(T)/2024 AUSTRALIA - WESTERN AUSTRALIA - Norwegian Bay - Beacon obscured
Department of Transport WA Notice 5805/2023

The rear leading beacon is obscured and currently not visible.

The recommended track may no longer indicate the best passage through the reef.

Mariners are advised to navigate with caution in the area.

Chart temporarily affected - Aus 745

70(T)/2024 AUSTRALIA - WESTERN AUSTRALIA - Cockburn Sound - Medina Channel - Light beacon destroyed
Fremantle Ports Notice 15/2023

The port lateral light beacon, Fl.R.2s C (32° 09'.90 S 115° 45'.51 E), has been destroyed; a port lateral light buoy, Fl.R.2s, exists in situ.

Chart temporarily affected - Aus 117

71(T)/2024 AUSTRALIA - WESTERN AUSTRALIA - Exmouth Plateau - Subsea operations
Woodside Energy Ltd

Vessel *Fugro Etive* is conducting subsea operations in an area bound by the following positions:

20° 02'.0 S 113° 03'.9 E

20° 02'.0 S 113° 27'.4 E

19° 36'.1 S 113° 27'.4 E

19° 36'.1 S 113° 03'.9 E.

A 500m exclusion zone exists around the vessel.

Mariners are advised to navigate with caution in the area.

Chart temporarily affected - Aus 329 - Aus 4723 (INT 723)

72(T)/2024 AUSTRALIA - WESTERN AUSTRALIA - Fremantle - Owen Anchorage - Scientific instruments
Fremantle Ports Notice 19/2023

Subsurface scientific instruments exist on the seabed in positions 32° 05'.42 S 115° 43'.74 E and 32° 08'.01 S 115° 43'.22 E.

Mariners are advised to navigate with caution in the area.

Chart temporarily affected - Aus 117

75(P)/2024 AUSTRALIA - WESTERN AUSTRALIA - Onslow - Shoaling
OSMB

Latest survey indicates shoaler depths than those charted may exist within the spoil ground in the vicinity of position 21° 36'.88 S 115° 06'.31E

Mariners are advised to navigate with caution in the area.

Charts will be updated in due course.

Chart which will be affected - Aus 64

162(T)/2024 AUSTRALIA - WESTERN AUSTRALIA - Dampier - Malus Islands - Ship to ship transfer
Pilbara Ports Authority Notice D5(T)/2024

Ship to ship pipe transfer operations will be conducted in the Malus Anchorage area (20° 31'.91 S 116° 40'.35 E).

A 0.27M radius exclusion zone exists around transfer operations.

Chart temporarily affected - Aus 57

167(T)/2024 AUSTRALIA - WESTERN AUSTRALIA - Rottnest Island - Point Clune - Scientific instrument northwards
MMA Offshore

A special light buoy, *Fl.Y*, exists in position 31° 57'.072 S 115° 31'.62 E.

Chart temporarily affected - Aus 112 - Aus 754

223(T)/2024 AUSTRALIA - WESTERN AUSTRALIA - Bateman Bay to Bills Bay - Scientific instruments
Sydney Institute of Marine Science

Subsurface scientific instruments exist as follows:

<i>Position</i>	<i>Metres below surface</i>
23° 02'.58 S 113° 47'.45 E	4.9
23° 02'.86 S 113° 47'.16 E	14.6
23° 02'.88 S 113° 49'.06 E	13
23° 02'.89 S 113° 47'.53 E	17.2
23° 02'.89 S 113° 47'.91 E	18.1
23° 02'.89 S 113° 48'.28 E	14.2
23° 02'.89 S 113° 48'.67 E	17.1
23° 05'.09 S 113° 48'.53 E	8.7
23° 07'.27 S 113° 45'.09 E	3
23° 07'.28 S 113° 45'.43 E	7
23° 07'.42 S 113° 41'.37 E	66
23° 07'.45 S 113° 41'.83 E	66
23° 07'.48 S 113° 44'.95 E	3
23° 07'.50 S 113° 42'.28 E	64
23° 07'.57 S 113° 42'.72 E	60
23° 07'.61 S 113° 43'.58 E	42
23° 07'.62 S 113° 43'.15 E	52
23° 07'.64 S 113° 44'.08 E	30
23° 07'.64 S 113° 46'.13 E	2
23° 08'.15 S 113° 45'.22 E	8.

Chart temporarily affected - Aus 745 - Aus 746

224(T)/2024 AUSTRALIA - WESTERN AUSTRALIA - Cape Range - Tantabiddi - Scientific instruments
Sydney Institute of Marine Science

Subsurface scientific instruments exist as follows:

<i>Position</i>	<i>Metres below surface</i>
21° 52'.83 S 113° 54'.33 E	86
21° 53'.03 S 113° 54'.67 E	84
21° 53'.31 S 113° 55'.03 E	75
21° 53'.46 S 113° 55'.44 E	57
21° 53'.71 S 113° 55'.79 E	36.

Chart temporarily affected - Aus 328 - Aus 329 - Aus 745

255(T)/2024 AUSTRALIA - WESTERN AUSTRALIA - Eugene McDermott Shoal - Drill rig northwestwards
MODU *Transocean Equinox*

Drill rig *Transocean Equinox* is conducting drilling operations in position 12° 57'.9 S 124° 26'.5 E. 2M clearance requested.

Chart temporarily affected - Aus 319

257(T)/2024 AUSTRALIA - WESTERN AUSTRALIA - Eugene McDermott Shoal to Scott Reef - Scientific instruments
JASCO Applied Sciences (Australia)

Subsurface scientific instruments, 1.5m above seabed, exist in the following positions:

12° 57'.69 S 124° 40'.26 E
12° 57'.85 S 124° 12'.67 E
12° 58'.17 S 123° 42'.13 E
13° 59'.13 S 121° 46'.49 E
14° 02'.00 S 122° 00'.88 E
14° 25'.00 S 121° 39'.15 E.

Mariners are advised to stay well clear of the instruments and to navigate with caution in the area.

Chart temporarily affected - Aus 319 - Aus 322

258(T)/2024 AUSTRALIA - WESTERN AUSTRALIA - Exmouth Gulf - Scientific instrument
JASCO Applied Sciences (Australia)

A subsurface scientific instrument, 0.5m above the seabed, exists in position 22° 12'.86 S 114° 13'.93 E.

Mariners are advised to navigate with caution in the area and keep well clear.

Chart temporarily affected - Aus 329 - Aus 744

259(T)/2024 AUSTRALIA - WESTERN AUSTRALIA - Fremantle - Scientific instrument
Department of Transport WA Notice 5994/2024

A subsurface scientific instrument, 0.5m above the seabed, exists in position 32° 03'.85 S 115° 43'.37 E.

Mariners are advised to navigate with caution in the area.

Chart temporarily affected - Aus 112 - Aus 117

263(T)/2024 AUSTRALIA - WESTERN AUSTRALIA - Port Hedland - Light beacons altered
Pilbara Ports Authority Notice PH4/2024

The starboard lateral light beacon, *Fl.G.4s 20m No15* (20° 10'.40 S 118° 30'.49 E), has been temporarily altered to *Fl.G.2s 20m No15*.

The port lateral light beacon, *Fl.R.4s 20m No16* (20° 10'.33 S 118° 30'.63 E), has been temporarily altered to *Fl.R.2s 20m No16*.

Chart temporarily affected - Aus 53

265(T)/2024 AUSTRALIA - WESTERN AUSTRALIA - Thevenard Island - Obstruction
Chevron Australia

An obstruction, 15m below the surface, exists in position 21° 24'.17 S 115° 02'.81 E.

Chart temporarily affected - Aus 64 - Aus 328 - Aus 743

296(P)/2024 AUSTRALIA - WESTERN AUSTRALIA - Bougainville Peninsula - Cape Bougainville - Rock
Department of Primary Industries and Regional Development WA

An uncharted submerged rock has been reported in position 13° 54'.91 S 126° 02'.56 E.

Mariners are advised to navigate with caution in the area.

Charts will updated in due course.

Chart which will be affected - Aus 318 - Aus 319 - Aus 728

297(T)/2024 AUSTRALIA - WESTERN AUSTRALIA - Cape Naturaliste - Scientific instrument northwestwards

Former Notice - 821(T)/2023 is cancelled

JASCO Applied Sciences (Australia)

A subsurface scientific instrument, 5m above the seabed, exists in position 33° 20'.07 S 114° 46'.94 E.

Chart temporarily affected - Aus 335

332(T)/2024 AUSTRALIA - WESTERN AUSTRALIA - Barrow Island - Subsea operations northwestwards

DOF Management Australia Pty Ltd

MV *Skandi Singapore* is conducting subsea operations in the vicinity of position 20° 29'.69 S 114° 53'.84 E.

A 1500m radius exclusion zone exists around the vessel.

Mariners are advised to navigate with caution in the area.

Chart temporarily affected - Aus 328

334(T)/2024 AUSTRALIA - WESTERN AUSTRALIA - Dampier - Rio Tinto Channel - AIS and racon inoperative

Pilbara Ports Authority Notice D12(T)/2024

The AIS and Racon(M) at special light buoy, Q(4)Y.6s *Sea Buoy* (20° 25'.45 S 116° 42'.92 E), are inoperative.

Chart temporarily affected - Aus 57 - Aus 327

414(T)/2024 AUSTRALIA - WESTERN AUSTRALIA - Barrow Island - Rock installation northwestwards

Former Notice - 222(T)/2024 is cancelled

Van Oord Offshore Energy

Vessel *Bravenes* and a ROV are conducting rock installation between positions 20° 29'.30 S 114° 53'.83 E and 20° 41'.37 S 115° 24'.69 E.

Mariners are advised to navigate with caution in the area. 1M clearance requested.

Chart temporarily affected - Aus 65 - Aus 327 - Aus 328 - Aus 742

415(T)/2024 AUSTRALIA - WESTERN AUSTRALIA - Bathurst Island - Survey operations westwards

Guardian Geomatics

On or about 3 June 2024, vessel *Offshore Surveyor* will be conducting survey operations in an area bounded by the following positions:

11° 35'.78 S 129° 42'.30 E
11° 14'.63 S 129° 26'.30 E
11° 21'.65 S 129° 04'.19 E
11° 57'.79 S 129° 21'.84 E
12° 06'.07 S 129° 49'.89 E
11° 49'.26 S 129° 24'.46 E
11° 37'.97 S 129° 16'.65 E
11° 37'.92 S 129° 34'.00 E.

Tide gauges, marked by special light buoys *Fl. Y.5s*, will be deployed in the following positions:

11° 14'.4 S 129° 26'.8 E
11° 18'.0 S 129° 15'.3 E
11° 21'.7 S 129° 03'.9 E
11° 22'.0 S 129° 32'.5 E
11° 28'.2 S 129° 23'.7 E
11° 30'.3 S 129° 07'.9 E
11° 35'.7 S 129° 42'.8 E
11° 38'.3 S 129° 32'.1 E
11° 38'.3 S 129° 22'.2 E
11° 39'.2 S 129° 12'.2 E

11° 49'.3 S 129° 24'.6 E
11° 59'.2 S 129° 24'.3 E
11° 59'.5 S 129° 39'.5 E.

Mariners are advised to navigate with caution in the area.

Chart temporarily affected - Aus 309 - Aus 311

416(T)/2024 AUSTRALIA - WESTERN AUSTRALIA - Dampier - Enderby Island - Ship to ship transfer
Monson Offshore

Ship to ship pipe transfer operations will be conducted at 20° 34'.40 S 116° 35'.53 E and 20° 35'.38 S 116° 35'.20 E

A 0.27M radius exclusion zone exists around transfer operations.

Chart temporarily affected - Aus 57 - Aus 4603 (INT 603)

418(T)/2024 AUSTRALIA - WESTERN AUSTRALIA - Geraldton - Obstruction; light buoy
Mid West Ports Notice 15/2024

An obstruction marked by a special light buoy, *Fl.Y.3s*, exists in position 28° 46'.30 S 114° 35'.57 E.

Mariners are advised to navigate with caution in the area and keep well clear.

Chart temporarily affected - Aus 81

449(T)/2024 AUSTRALIA - WESTERN AUSTRALIA - Barrow Island - Scientific instruments northwestwards
Former Notice - 121(T)/2024 is cancelled
Fugro

Special light buoys, *Fl(5)Y.20s*, exist in the following positions:

19° 53'.71 S 113° 15'.20 E
19° 43'.68 S 114° 33'.97 E
20° 00'.54 S 115° 16'.83 E.

Chart temporarily affected - Aus 328 - Aus 4723 (INT 723)

493(T)/2024 AUSTRALIA - WESTERN AUSTRALIA - Dampier Archipelago - Mooring buoy unlit northwards
Vermilion Oil and Gas Australia

Lit mooring buoy, *Mo(U)Y.15s* (20° 06'.9 S 116° 26'.0 E), is unlit.

Chart temporarily affected - Aus 327 - Aus 742

494(T)/2024 AUSTRALIA - WESTERN AUSTRALIA - Dampier Archipelago - Dolphin Island - Scientific instrument eastwards

Department of Transport WA Notice 6101/2024

A subsurface scientific instrument, 2m above the seabed, exists in position 20° 29'.27 S 116° 56'.42 E.

Chart temporarily affected - Aus 57 - Aus 327

495(T)/2024 AUSTRALIA - WESTERN AUSTRALIA - Exmouth - Scientific instrument
Department of Transport WA Notice 6097/2024

A scientific instrument exists on the seabed in position 21° 57'.59 S 114° 09'.11 E.

Chart temporarily affected - Aus 744 - Aus 745

497(T)/2024 AUSTRALIA - WESTERN AUSTRALIA - King George Sound - Seal Island - Wave energy converter
Department of Transport WA Notice 6093/2024

Works to install anchors associated with the installation of a wave energy converter are in progress in the vicinity of position 35° 04'.72 S 117° 58'.75 E.

Mariners are advised to navigate with caution in the area.

Chart temporarily affected - Aus 118

500(T)/2024 AUSTRALIA - WESTERN AUSTRALIA - Peron Peninsula - Guichenault Point - Scientific instruments
Department of Transport WA Notice 6063/2023

Subsurface scientific instruments, 5m below the surface, exist in the following positions:

25° 34'.55 S 113° 37'.54 E
25° 34'.56 S 113° 36'.35 E
25° 35'.09 S 113° 37'.56 E
25° 35'.10 S 113° 36'.36 E
25° 35'.26 S 113° 37'.01 E
25° 35'.63 S 113° 37'.56 E
25° 35'.64 S 113° 36'.38 E
25° 36'.17 S 113° 37'.58 E
25° 36'.19 S 113° 36'.39 E
25° 36'.56 S 113° 37'.95 E
25° 36'.71 S 113° 37'.58 E
25° 36'.73 S 113° 36'.40 E
25° 36'.91 S 113° 37'.99 E
25° 37'.25 S 113° 37'.60 E
25° 37'.27 S 113° 36'.40 E.

Mariners are advised to navigate with caution in the area and keep well clear.

Chart temporarily affected - Aus 331

534(T)/2024 AUSTRALIA - WESTERN AUSTRALIA - Dampier - Mermaid Sound - Scientific instrument; exclusion zone

Pilbara Ports Authority Notice D15(T)/2024

A scientific instrument exists on the seabed in position 20° 29'.65 S 116° 45'.95 E. A 200m radius exclusion zone exists around the instrument.

Mariners are advised to navigate with caution in the area and to keep well clear.

Chart temporarily affected - Aus 57

568(T)/2024 AUSTRALIA - WESTERN AUSTRALIA - Port Geographe Marina - Dredging operations

Department of Transport WA Notice 6124/2024

The dredge *Cooper II* is conducting dredging operations at the entrance to the marina (33° 37'.74 S 115° 23'.38 E).

A floating and submerged pipeline exists from the dredge and is marked by special light buoys.

The dredge will display appropriate lights and shapes and will monitor VHF Ch 16, Marine 27 and MHz Ch 88.

Mariners are advised to contact the dredge if they are unsure where to safely pass.

Spoil will be deposited in the spoil ground (33° 37'.42 S 115° 23'.72 E) which is marked by special light buoys in the following positions:

33° 37'.45 S 115° 23'.50 E
33° 37'.37 S 115° 23'.67 E
33° 37'.37 S 115° 23'.88 E
33° 37'.46 S 115° 23'.88 E
33° 37'.46 S 115° 23'.61 E
33° 37'.49 S 115° 23'.56 E.

Mariners are advised to navigate with caution in the area and keep well clear.

Chart temporarily affected - Aus 116

569(T)/2024 AUSTRALIA - WESTERN AUSTRALIA - Port Walcott - Tide gauges

Discovery Marine

In preparation for survey operations, tide gauges marked by buoys have been deployed in the following positions:

20° 22'.20 S 117° 31'.49 E
20° 23'.10 S 117° 17'.69 E
20° 25'.60 S 117° 04'.79 E
20° 28'.20 S 117° 17'.09 E
20° 34'.00 S 117° 23'.49 E
20° 37'.20 S 117° 32'.09 E.

Mariners are advised to navigate with caution in the area.

Chart temporarily affected - Aus 55 - Aus 326 - Aus 327

611(T)/2024 AUSTRALIA - WESTERN AUSTRALIA - Bathurst Island - Survey operations westwards
MMA Offshore

Vessels *Offshore Solution* and *Pacific Conquest* are conducting survey operations in areas bounded by the following positions:

10° 59'.08 S 129° 17'.32 E
10° 59'.08 S 129° 23'.54 E
11° 12'.99 S 129° 36'.93 E
11° 11'.18 S 129° 42'.97 E
11° 12'.32 S 129° 43'.87 E
11° 13'.52 S 129° 42'.56 E
11° 29'.23 S 129° 44'.65 E
11° 27'.71 S 129° 49'.85 E
11° 32'.90 S 129° 50'.35 E
11° 35'.18 S 129° 44'.32 E;
and
11° 21'.69 S 129° 04'.31 E
11° 18'.70 S 129° 01'.13 E
10° 58'.87 S 129° 00'.32 E
10° 58'.86 S 129° 15'.60 E
11° 14'.74 S 129° 26'.40 E.

Tide gauges, marked by special light buoys *Fl. Y. 5s*, exist in the following positions:

10° 58'.5 S 129° 00'.0 E
10° 58'.4 S 129° 11'.7 E
10° 57'.7 S 129° 23'.5 E
11° 10'.1 S 129° 00'.3 E
11° 08'.1 S 129° 12'.4 E
11° 06'.3 S 129° 31'.2 E
11° 21'.7 S 129° 03'.9 E
11° 18'.6 S 129° 15'.2 E
11° 15'.9 S 129° 24'.5 E
11° 11'.8 S 129° 44'.0 E
11° 24'.4 S 129° 35'.6 E
11° 23'.0 S 129° 47'.7 E
11° 35'.7 S 129° 42'.8 E
11° 33'.6 S 129° 52'.5 E.

Mariners are advised to navigate with caution in the area.

Chart temporarily affected - Aus 309 - Aus 310 - Aus 311

613(T)/2024 AUSTRALIA - WESTERN AUSTRALIA - Cape Preston - Light buoy northwestwards
Australian Maritime Safety Authority , Pilbara Ports Authority

A pink spherical light buoy, *Q. Y.*, exists in position 20° 35'.81 S 116° 04'.58 E.

Mariners are advised to navigate with caution in the area.

Chart temporarily affected - Aus 327 - Aus 742

616(T)/2024 AUSTRALIA - WESTERN AUSTRALIA - Isthmus Bay - Scientific instrument
Department of Transport WA Notice 1341/2024

A special light buoy, *Fl. Y. 2·5s*, exists in position 35° 06'.58 S 117° 58'.66 E.

Mariners are advised to navigate with caution in the area and keep well clear.

Chart temporarily affected - Aus 118

620(T)/2024 AUSTRALIA - WESTERN AUSTRALIA - Princess Royal Harbour - Marine farm; light buoys

Former Notice - 111(T)/2023 is cancelled

Department of Transport WA Notice 6130/2024

A marine farm marked by special light buoys, *Fl.Y.4s*, exists in an area bounded by the following positions:

35° 04'.22 S 117° 54'.51 E
35° 04'.22 S 117° 54'.61 E
35° 04'.21 S 117° 54'.61 E
35° 04'.21 S 117° 55'.00 E
35° 04'.09 S 117° 55'.00 E
35° 04'.09 S 117° 55'.20 E
35° 04'.36 S 117° 55'.20 E
35° 04'.36 S 117° 55'.14 E
35° 04'.48 S 117° 55'.14 E
35° 04'.48 S 117° 54'.51 E.

Chart temporarily affected - Aus 118

621(T)/2024 AUSTRALIA - WESTERN AUSTRALIA - Wilson Head - Scientific instruments

Former Notice - 631(T)/2023 is cancelled

Department of Transport WA Notice 5793/2024

Two special light buoys, *Fl.Y.2.5s*, exist in the vicinity of position 35° 02'.93 S 117° 21'.82 E.

Chart temporarily affected - Aus 336

652(T)/2024 AUSTRALIA - WESTERN AUSTRALIA - Bunbury - Dredging operations; survey operations

Department of Transport WA Notice 6148/2024

The dredge *Modi R*, survey vessel *Rind R* and support vessels are conducting dredging and survey operations in the Port of Bunbury (33° 18'.67 S 115° 39'.13 E).

Vessels will display appropriate lights and shapes and will monitor VHF Ch 12 and Ch 16.

Mariners are requested to contact the operators before navigating past working vessels.

Mariners are advised to navigate with caution in the area.

Chart temporarily affected - Aus 115

655(T)/2024 AUSTRALIA - WESTERN AUSTRALIA - North West Cape - Light unlit

Australian Maritime Safety Authority Auscoast Warning 216/2024

The light, *Fl.10s 129m 21M* (21° 48'.37 S 114° 09'.61 E), is unlit.

Chart temporarily affected - Aus 328 - Aus 329 - Aus 744 - Aus 745 - Aus 4060 (INT 60) - Aus 4070 (INT 70) - Aus 4071 (INT 71) - Aus 4708 (INT 708) - Aus 4723 (INT 723)

682(T)/2024 AUSTRALIA - WESTERN AUSTRALIA - Broome - Survey operations

EGS Survey Pty Ltd

On or about 5 September 2024, vessel *Tengarra Explorer* will be conducting survey operations in an area bounded by the following positions:

18° 12'.36 S 121° 57'.23 E
18° 10'.57 S 122° 00'.01 E
18° 04'.63 S 122° 02'.25 E
18° 02'.53 S 122° 02'.24 E
18° 01'.68 S 122° 00'.91 E
17° 58'.66 S 122° 01'.82 E
17° 59'.25 S 122° 09'.21 E
17° 58'.15 S 122° 08'.04 E
17° 57'.99 S 122° 05'.18 E

17° 48'.19 S 122° 01'.96 E
17° 48'.35 S 121° 52'.95 E
17° 50'.08 S 121° 51'.46 E
17° 56'.33 S 121° 52'.34 E
18° 07'.65 S 121° 47'.76 E.

Tide gauges, marked by special light buoys *Fl. Y. 2s*, will be deployed in the following positions:

17° 47'.80 S 122° 02'.20 E
17° 48'.10 S 121° 50'.50 E
17° 57'.90 S 121° 49'.20 E
17° 58'.63 S 122° 03'.93 E
17° 59'.10 S 122° 00'.00 E
18° 07'.60 S 121° 47'.40 E
18° 12'.80 S 121° 57'.23 E.

Mariners are advised to navigate with caution in the area.

Chart temporarily affected - Aus 50 - Aus 324

683(T)/2024 AUSTRALIA - WESTERN AUSTRALIA - Dampier - Malus Islands - Drill rig
Australian Maritime Safety Authority Auscoast Warning 249/2024

Drill rig *Valaris 107* is moored in position 20° 29'.50 S 116° 41'.70 E.

Chart temporarily affected - Aus 57 - Aus 327

685(T)/2024 AUSTRALIA - WESTERN AUSTRALIA - Yampi Sound - Comber Rock - Light buoy unlit
Kimberley Ports Authority Notice 10/2024

The east cardinal light buoy, *Q(3)10s* (16° 06'.42 S 123° 39'.66 E), is unlit.

Chart temporarily affected - Aus 40 - Aus 732 - Aus 733

714(T)/2024 AUSTRALIA - WESTERN AUSTRALIA - Barrow Island - Drill rig northwestwards
Santos

Drill rig *Ocean Apex* is conducting drilling operations in position 20° 36'.07 S 114° 55'.16 E.

Chart temporarily affected - Aus 328

715(T)/2024 AUSTRALIA - WESTERN AUSTRALIA - Browse Island - Drill rig northwestwards
Former Notice - 612(T)/2024 is cancelled
Australian Maritime Safety Authority Auscoast Warning 264/2024

Drill rig *Noble Deliverer* is conducting drilling operations in position 13° 51'.69 S 123° 16'.41 E.

Chart temporarily affected - Aus 319 - Aus 320

716(T)/2024 AUSTRALIA - WESTERN AUSTRALIA - Browse Island - Survey operations northwards
Department of Transport WA Notice 6173/2024

Vessel *Offshore Solution* is conducting survey operations, with a 750m towed array, between positions 13° 34'.36 S 123° 31'.64 E and 13° 46'.88 S 123° 18'.97 E.

The vessel will display appropriate lights and shapes and monitor VHF Ch 16.

Mariners are advised to navigate with caution in the area and give way to the vessel and towed array.

Chart temporarily affected - Aus 319 - Aus 320

717(T)/2024 AUSTRALIA - WESTERN AUSTRALIA - Dampier Archipelago - Well plug and abandonment works northwestwards
Woodside Energy Ltd

On or about the 21 September 2024, vessel *Deep Orient* will be conducting well plug and abandonment works in the vicinity

of positions 19° 39'.08 S 115° 55'.80 E and 19° 44'.74 S 115° 44'.20 E.

A 500m exclusion zone exists around the vessel.

Mariners are advised to navigate with caution in the area.

Chart temporarily affected - Aus 328

718(T)/2024 AUSTRALIA - WESTERN AUSTRALIA - Dampier Archipelago - Well plug and abandonment works northwestwards

Woodside Energy Ltd

On or about 20 September 2024, vessel *Skandi Hercules* will be conducting well plug and abandonment works in the following positions:

19° 30'.31 S 116° 20'.91 E
19° 30'.37 S 116° 16'.69 E
19° 34'.04 S 116° 29'.42 E
19° 37'.00 S 116° 22'.36 E
19° 38'.94 S 116° 21'.84 E
19° 39'.80 S 115° 51'.94 E
19° 44'.28 S 115° 44'.90 E
19° 44'.72 S 115° 44'.19 E
19° 50'.00 S 115° 37'.24 E
19° 52'.73 S 115° 38'.11 E
20° 04'.23 S 115° 11'.01 E
20° 05'.14 S 115° 05'.68 E.

A 500m radius exclusion zone exists around the vessel.

Mariners are advised to navigate with caution in the area.

Chart temporarily affected - Aus 327 - Aus 328 - Aus 742

719(T)/2024 AUSTRALIA - WESTERN AUSTRALIA - Exmouth Plateau - Drilling operations

Woodside Energy Ltd

Drill rig *Valaris DPS-1* and support vessels are conducting drilling operations in the following positions:

19° 45'.88 S 113° 14'.46 E
19° 49'.46 S 113° 13'.14 E
19° 52'.51 S 113° 06'.69 E
19° 52'.65 S 113° 13'.41 E
19° 53'.31 S 113° 10'.06 E
19° 53'.45 S 113° 08'.73 E
19° 53'.51 S 113° 08'.73 E
19° 53'.81 S 113° 06'.92 E.

A subsurface scientific instrument exists on the seabed in each of the above positions.

Mariners are advised to navigate with caution in the area.

Chart temporarily affected - Aus 4723 (INT 723)

751(T)/2024 AUSTRALIA - WESTERN AUSTRALIA - Barrow Island - Subsea operations northwestwards

Helix Energy Solutions

Vessel *Helix Q7000* is conducting subsea operations in the vicinity of position 19° 51'.17 S 114° 30'.91 E and 20° 24'.46 S 114° 50'.95 E.

Mariners are advised to navigate with caution in the area.

Chart temporarily affected - Aus 328

754(T)/2024 AUSTRALIA - WESTERN AUSTRALIA - Muiron Islands - Drill rig northwestwards

Former Notice - 618(T)/2024 is cancelled

Australian Maritime Safety Authority Auscoast Warning 280/2024

Drill rig *Transocean Endurance* is conducting drilling operations in position 21° 29'.70 S 113° 49'.74 E.

Chart temporarily affected - Aus 328 - Aus 329

SOUTH AUSTRALIA

436(T)/2017 AUSTRALIA - SOUTH AUSTRALIA - Fleurieu Peninsula - Haycock Point - Hulk; prohibited area
Former Notice - 619(T)/2016 is cancelled
Department of Planning, Transport and Infrastructure SA Notices 37/2014, 8/2017

A lit hulk, *Fl. Y.4s*, exists in position 35° 25'.23 S 138° 18'.33 E.

A prohibited area, marked by special buoys, exists in an area bounded by the following positions:

35° 25'.15 S 138° 18'.28 E

35° 25'.17 S 138° 18'.42 E

35° 25'.32 S 138° 18'.39 E

35° 25'.29 S 138° 18'.26 E.

Chart temporarily affected - Aus 485 - Aus 780

81(T)/2021 AUSTRALIA - SOUTH AUSTRALIA - Gulf St Vincent - Rogues Point - Artificial reef
Department of Planning, Transport and Infrastructure SA Notice 9/2017

An artificial reef is being developed in an area bounded by the following positions:

34° 30'.63 S 137° 53'.95 E

34° 30'.63 S 137° 54'.12 E

34° 30'.47 S 137° 54'.13 E

34° 30'.47 S 137° 53'.95 E.

A lit raft exists in position 34° 30'.59 S 137° 53'.99 E.

Chart temporarily affected - Aus 781

291(T)/2021 AUSTRALIA - SOUTH AUSTRALIA - Port Adelaide - Shoaling
Department for Transport, Energy and Infrastructure SA Notice 38/2007

Silting has resulted in width restrictions being imposed in the main channel of the Port Adelaide River between No 40 beacon (34° 47'.86 S 138° 30'.79 E) and No 41 beacon (34° 48'.52 S 138° 30'.77 E).

Mariners should avoid the western side of the main channel and navigate with caution in this part of the River as the available navigable channel is now only 90 metres wide measured from the eastern edge.

Mariners intending to transit this section should contact the Manager Marine Operations, Flinders Ports Pty Ltd on (08) 8447 0622 to confirm maximum widths.

Chart temporarily affected - Aus 130

803(T)/2021 AUSTRALIA - SOUTH AUSTRALIA - Gulf St Vincent - Investigator Strait to Adelaide - Scientific instruments

Former Notice - 771(T)/2021 is cancelled

Department for Infrastructure and Transport SA Notice 25(T)/2021

Special light buoys, *Fl. Y.2s*, exist in the following positions:

34° 51'.30 S 138° 21'.00 E

35° 01'.50 S 138° 27'.00 E.

An unlit special buoy exists in position 35° 34'.20 S 136° 55'.53 E.

Chart temporarily affected - Aus 130 - Aus 780 - Aus 781

587(T)/2022 AUSTRALIA - SOUTH AUSTRALIA - Wallaroo - Point Hughes - Harbour works
Department for Infrastructure and Transport SA Notice 18(T)/2022

Works associated with the construction of a new breakwater are in progress in the vicinity of position 33° 55'.88 S 137° 36'.29 E.

The works area is marked by special light buoys, *Fl. Y.4s*.

Mariners are advised to navigate with caution in the area.

Chart temporarily affected - Aus 777

909(T)/2022 AUSTRALIA - SOUTH AUSTRALIA - Thevenard - Light altered

Department for Infrastructure and Transport SA Notice 40(T)/2022

The light, Q (32° 08'.96 S 133° 38'.36 E), has been temporarily altered to F and the white sector removed.

Chart temporarily affected - Aus 120

998(T)/2022 AUSTRALIA - SOUTH AUSTRALIA - Two Hummock Point to Point Riley - Scientific instruments

Department for Infrastructure and Transport SA Notice 41(T)/2022

Scientific instruments exist on the seabed in the following positions:

32° 46'.43 S 137° 50'.38 E

33° 14'.56 S 137° 30'.23 E

33° 44'.84 S 137° 12'.20 E

33° 53'.17 S 137° 29'.01 E.

Mariners are advised to navigate with caution in the area

Chart temporarily affected - Aus 777 - Aus 778

42(T)/2023 AUSTRALIA - SOUTH AUSTRALIA - Spencer Gulf - Louth Bay to Arno Bay - Scientific instruments

Department for Infrastructure and Transport SA Notice 54(T)/2022

Special light buoys, *Fl. Y. 2-5s*, exist in the following positions:

33° 56'.49 S 136° 37'.28 E

34° 01'.73 S 136° 36'.23 E

34° 34'.23 S 135° 59'.81 E

34° 34'.45 S 136° 07'.35 E.

Chart temporarily affected - Aus 776 - Aus 777

584(T)/2023 AUSTRALIA - SOUTH AUSTRALIA - Kangaroo Island - Nepean Bay - Light beacon unlit

Department for Infrastructure and Transport SA Notice 34(T)/2023

The east cardinal light beacon, *Q(3)10s 3M* (35° 38'.42 S 137° 41'.69 E), is unlit.

Chart temporarily affected - Aus 780

632(T)/2023 AUSTRALIA - SOUTH AUSTRALIA - Port Giles - Light beacon unlit eastwards

Department for Infrastructure and Transport SA Notice 38(T)/2023

The light beacon, *Fl. WR. 4s 10/6M* (35° 01'.01 S 137° 52'.12 E), is unlit.

Chart temporarily affected - Aus 485 - Aus 781

723(T)/2023 AUSTRALIA - SOUTH AUSTRALIA - Lucky Bay - Dredging operations

Department for Infrastructure and Transport SA Notice 45(T)/2023

Dredging operations are in progress in an area bounded by the following positions:

33° 42'.81 S 137° 02'.19 E

33° 43'.30 S 137° 02'.67 E

33° 42'.81 S 137° 02'.83 E

33° 42'.51 S 137° 02'.33 E.

A submerged and floating pipeline exists in the area.

The dredge will display appropriate lights and shapes and will monitor VHF Ch 16 and Ch 1.

Mariners are advised to navigate with caution in the area.

Chart temporarily affected - Aus 777

724(T)/2023 AUSTRALIA - SOUTH AUSTRALIA - Port Lincoln - Boston Bay - Light beacon destroyed
Department for Infrastructure and Transport SA Notice 44(T)/2023

The starboard lateral light beacon, *Fl.G.2s No3* (34° 41'.75 S 135° 52'.70 E), has been destroyed.

Mariners are advised to navigate with caution in the area.

Chart temporarily affected - Aus 134

1026(T)/2023 AUSTRALIA - SOUTH AUSTRALIA - Cape Buffon - Light unlit
Department for Infrastructure and Transport SA Notice 67(T)/2023

The light, *Fl.WR.2-5s 8/3M* (37° 33'.96 S 140° 06'.47 E), is unlit.

Chart temporarily affected - Aus 348

1027(T)/2023 AUSTRALIA - SOUTH AUSTRALIA - Port Bonython - Scientific instrument
Department for Infrastructure and Transport SA Notice 68(T)/2023

A subsurface scientific instrument, 1.5m above the seabed, exists in position 33° 00'.24 S 137° 47'.34 E.

Chart temporarily affected - Aus 136

37(T)/2024 AUSTRALIA - SOUTH AUSTRALIA - Spencer Gulf - Flinders Channel - Light beacons unlit
Department for Infrastructure and Transport SA Notice 01(T)/2024

The following light beacons are unlit:

Fl.G.2s No 9 (32° 42'.84 S 137° 48'.96 E)

Fl.G.4s No 13 (32° 39'.61 S 137° 46'.30 E)

Fl.G.2s No 15 (32° 38'.99 S 137° 46'.15 E)

Chart temporarily affected - Aus 778

168(T)/2024 AUSTRALIA - SOUTH AUSTRALIA - Kangaroo Island - American River - Wreck
Department for Infrastructure and Transport SA Notice 7(T)/2024

A stranded wreck marked by an isolated danger light buoy, *Fl(2)4s*, exists in position 35° 47'.22 S 137° 46'.51 E.

Mariners are advised to navigate with caution in the area.

Chart temporarily affected - Aus 780

227(T)/2024 AUSTRALIA - SOUTH AUSTRALIA - Glenelg to Lincoln Canyon - Survey operations
EGS Survey Pty Ltd

On or about 28 March 2024, MV *Samson Explorer* is conducting survey operations, with a 900m towed array, in an area bound by the following positions:

34° 56'.30 S 138° 29'.20 E

35° 36'.42 S 135° 57'.96 E

35° 59'.72 S 135° 40'.98 E

36° 06'.38 S 135° 46'.92 E

35° 44'.18 S 136° 07'.17 E

35° 34'.34 S 137° 11'.64 E

35° 19'.50 S 138° 07'.14 E

34° 59'.15 S 138° 30'.41 E.

Vessels involved in the operations will display appropriate lights and shapes and will monitor VHF Ch 16.

Mariners are advised to navigate with caution in the area and keep well clear.

Chart temporarily affected - Aus 343 - Aus 346 - Aus 485 - Aus 776 - Aus 780 - Aus 781

305(T)/2024 AUSTRALIA - SOUTH AUSTRALIA - Gulf St Vincent - Port Gawler - Scientific instruments

Department for Infrastructure and Transport SA Notice 20(T)/2024

Subsurface scientific instruments exist on the seabed, with a minimum safe clearance of 2m, in the following positions:

34° 41'.78 S 138° 26'.09 E
34° 41'.98 S 138° 25'.18 E
34° 42'.13 S 138° 25'.72 E.

Mariners are advised to navigate with caution in the area.

Chart temporarily affected - Aus 781

337(T)/2024 AUSTRALIA - SOUTH AUSTRALIA - Denial Bay - Obstruction

Department for Infrastructure and Transport SA Notice 23(T)/2024

A lost anchor exists in position 32° 14'.87 S 133° 30'.18 E.

Mariners are advised to navigate with caution in the area.

Chart temporarily affected - Aus 120 - Aus 341

459(T)/2024 AUSTRALIA - SOUTH AUSTRALIA - Yorke Peninsula - Sultana Point - Wreck

Department for Infrastructure and Transport SA Notice 27(T)/2024

A stranded wreck marked by an isolated danger light buoy, *Fl(2)5s*, exists in position 35° 05'.95 S 137° 45'.00 E.

Mariners are advised to navigate with caution in the area.

Chart temporarily affected - Aus 780 - Aus 781

573(T)/2024 AUSTRALIA - SOUTH AUSTRALIA - Cape Hardy - Scientific instruments

Department for Infrastructure and Transport SA Notice 37(T)/2024

Subsurface scientific instruments, 3m above the seabed, exist in the following positions:

34° 10'.03 S 136° 20'.90 E
34° 11'.05 S 136° 20'.47 E
34° 12'.01 S 136° 19'.80 E.

Mariners are advised to navigate with caution in the area.

Chart temporarily affected - Aus 777

574(T)/2024 AUSTRALIA - SOUTH AUSTRALIA - Spencer Gulf - Point Lowly - Scientific instruments

Former Notice - 36(T)/2024 is cancelled

Department for Infrastructure and Transport SA Notice 33(T)/2024

Subsurface scientific instruments, 1.5m above the seabed, exist in positions 33° 00'.46 S 137° 47'.55 E and 32° 58'.76 S 137° 48'.02 E.

Mariners are advised to navigate with caution in the area.

Chart temporarily affected - Aus 136

622(T)/2024 AUSTRALIA - SOUTH AUSTRALIA - Port Adelaide - Light beacon destroyed

Department for Infrastructure and Transport SA Notice 40(T)/2024

The light beacon, *Q.10M Entrance* (34° 46'.82 S 138° 22'.53 E), has been destroyed; a special virtual AIS exists in situ.

Mariners are advised to navigate with caution in the area.

Chart temporarily affected - Aus 130 - Aus 485 - Aus 781

623(T)/2024 AUSTRALIA - SOUTH AUSTRALIA - Port Lincoln - Porter Bay - Light beacon unlit

Department for Infrastructure and Transport SA Notice 43(T)/2024

The light beacon, *Fl.R.1-5s* (34° 44'.50 S 135° 52'.89 E), is unlit.

Mariners are advised to navigate with caution in the area.

Chart temporarily affected - Aus 134

656(T)/2024 AUSTRALIA - SOUTH AUSTRALIA - Decres Bay - Light beacons unlit

Department for Infrastructure and Transport SA Notice 48(T)/2024

Light beacons, *Fl.G.4s* (32° 12'.39 S 133° 40'.79 E) and *Fl.3s 5M* (32° 12'.48 S 133° 41'.93 E), are unlit.

Chart temporarily affected - Aus 120

657(P)/2024 AUSTRALIA - SOUTH AUSTRALIA - Kangaroo Island - Kingscote - Shoaling

FPH Group

Latest survey indicates shoaler depths than those charted may exist in the vicinity of position 35° 37'.95 S 137° 38'.04E.

Mariners are advised to navigate with caution in the area.

Electronic Navigation Charts (ENCs) and Paper Charts will be updated in due course.

Chart which will be affected - Aus 780

658(P)/2024 AUSTRALIA - SOUTH AUSTRALIA - Spencer Gulf - Point Lowly - Shoaling

Former Notice - 624(P)/2024 is cancelled

Office of Hydrogen Power South Australia

Latest survey indicates shoaler depths than those charted may exist in an area bounded by the following positions:

32° 56'.16 S 137° 45'.49E

32° 55'.77 S 137° 47'.76E

32° 58'.67 S 137° 47'.86E

32° 58'.89 S 137° 46'.87E.

Mariners are advised to navigate with caution in the area.

Charts will be updated in due course.

Chart which will be affected - Aus 136 - Aus 778

724(T)/2024 AUSTRALIA - SOUTH AUSTRALIA - Spencer Gulf - Port Bonython - Light buoy off station

Department for Infrastructure and Transport SA Notice 50(T)/2024

The starboard lateral light buoy, *Fl.G.2s No5* (33° 02'.80 S 137° 45'.43 E), is off station.

Chart temporarily affected - Aus 136 - Aus 778

757(T)/2024 AUSTRALIA - SOUTH AUSTRALIA - Gulf St Vincent - Port Gawler - Scientific instrument

Department for Infrastructure and Transport SA Notice 55(T)/2024

A subsurface scientific instrument exists in position 34° 42'.67 S 138° 22'.58 E.

Mariners are advised to navigate with caution in the area.

Chart temporarily affected - Aus 130 - Aus 485 - Aus 781

758(T)/2024 AUSTRALIA - SOUTH AUSTRALIA - Gulf St Vincent - Largs Bay to Glenelg - Scientific instruments

Department for Infrastructure and Transport SA Notice 52(T)/2024

Light buoys, *Fl.Y.2-5s*, exist in the following positions:

34° 47'.98 S 138° 28'.78 E

34° 51'.30 S 138° 21'.02 E

34° 57'.28 S 138° 29'.30 E.

Mariners are advised to navigate with caution in the area.

Chart temporarily affected - Aus 130 - Aus 485 - Aus 781

VICTORIA

42(T)/2020 AUSTRALIA - VICTORIA - Port Phillip - Brighton - Obstruction Parks Victoria Notice 296(T)/2018

An obstruction marked by a buoy exists in position 37° 54'.44 S 144° 58'.95 E.

Chart temporarily affected - Aus 155

219(T)/2020 AUSTRALIA - VICTORIA - Portland Bay - Scientific instruments Maritime Safety Victoria Notice 79(T)/2020

Subsurface scientific instruments exist 5m below the surface in the following positions:

38° 16'.05 S 141° 50'.82 E

38° 16'.10 S 141° 51'.17 E

38° 16'.14 S 141° 51'.56 E.

Chart temporarily affected - Aus 140 - Aus 349

895(P)/2020 AUSTRALIA - VICTORIA - Port Welshpool to McLoughlins Entrance - Shoaling Gippsland Ports

Latest survey shows shoaling and channel realignment in the following channels:

Middle Ground Channel (38° 42'.5 S 146° 31'.5 E)

Snake Channel (38° 44'.4 S 146° 37'.0 E)

Midge Channel (38° 41'.8 S 146° 39'.9 E)

Port Albert Channel (38° 41'.5 S 146° 41'.2 E)

Kate Kearney Channel (38° 41'.7 S 146° 43'.0 E)

Kate Kearney Entrance (38° 41'.5 S 146° 45'.1 E)

Tarra Channel (38° 40'.8 S 146° 45'.7 E)

Boat Harbour Channel (38° 40'.4 S 146° 48'.4 E)

Pelican Channel (38° 39'.3 S 146° 48'.7 E)

Manns Beach Channel (38° 38'.8 S 146° 47'.4 E)

Manns Channel (38° 40'.5 S 146° 49'.6 E)

Oyster Bed Channel (38° 38'.5 S 146° 51'.2 E)

McLoughlins Entrance (38° 37'.8 S 146° 53'.0 E).

Mariners are advised to navigate with caution in the area.

Charts will be updated in due course.

Chart which will be affected - Aus 181

350(T)/2021 AUSTRALIA - VICTORIA - Port Phillip - Corio Bay - Scientific instruments Victorian Regional Channels Authority Notice 93(T)2021

Scientific instruments exist on the seabed in the following positions:

38° 05'.17 S 144° 23'.31 E

38° 05'.35 S 144° 24'.20 E.

Chart temporarily affected - Aus 153 - Aus 157

409(T)/2021 AUSTRALIA - VICTORIA - Port Phillip - Corio Bay - Scientific instrument Victorian Regional Channels Authority Notice 310(T)/2019

A scientific instrument marked by a special light buoy, *Fl. Y.*, exists on the seabed in position 38° 05'.07 S 144° 23'.25 E.

Chart temporarily affected - Aus 157

413(T)/2021 AUSTRALIA - VICTORIA - Port Phillip - Corio Bay - Light buoys; AIS Victorian Regional Channels Authority Notices 16(T)/2018, 17(T)/2018, 72(T)/2018

Starboard lateral pillar light buoys exist as follows:

<i>Position</i>	<i>Remarks</i>
-----------------	----------------

38° 06'.01 S 144° 22'.92 E *F.Iso.G.3s TB2*
38° 06'.65 S 144° 22'.34 E *F.Iso.G.3s TB1*

Starboard lateral virtual AIS also exist at the above positions.

Chart temporarily affected - Aus 157

416(T)/2021 AUSTRALIA - VICTORIA - Portland - Shoaling

Port of Portland Notice 56(T)/2021

Shoaling, with least depth 7.3m, extends 90m to the west of the main breakwater (38° 20'.65 S 141° 37'.40 E).

Mariners are advised to navigate with caution in the area.

Chart temporarily affected - Aus 140

542(T)/2021 AUSTRALIA - VICTORIA - Port Phillip - Sandringham - Dredging operations

Parks Victoria Notice 143(T)/2021

Dredging operations are in progress in the vicinity of position 37° 58'.0 S 145° 00'.2 E.

A dredge and support vessels are on site.

The dredge material will be deposited for beach renourishment along Edward Street Beach (37° 57'.35 S 145° 00'.34 E) and in Half Moon Bay (37° 58'.13 S 145° 00'.64 E).

All hazards to navigation will be marked by appropriate lights and shapes.

Mariners are advised to navigate with caution in the area.

Chart temporarily affected - Aus 143 - Aus 155

618(T)/2021 AUSTRALIA - VICTORIA - Port Phillip - Half Moon Bay - Obstructions

Parks Victoria Notices 215(T), 218(T)/2021

The jetty (37° 58'.09 S 145° 00'.58 E) has been demolished. Shoaling and obstructions may exist in the area north of the jetty.

Mariners are advised to navigate with caution in the area.

Chart temporarily affected - Aus 155

664(T)/2021 AUSTRALIA - VICTORIA - Western Port - Stony Point to Sandy Point - Shoaling

Victorian Regional Channels Authority Notice 199/2019

Shoaling exists in the vicinity of the following positions:

<i>Position</i>	<i>Least depth</i>	<i>Remarks</i>
38°25'.5 S 145° 13'.8 E	13.6m	Extending up to 100m into shipping channel
38°22'.8 S 145° 14'.7 E	13.2m	Extending up to 50m into shipping channel
38°21'.9 S 145° 14'.4 E	13.5m	Extending up to 40m into shipping channel
38°22'.1 S 145° 14'.3 E	13.8m	Extending up to 10m into shipping channel

Mariners are advised to navigate with caution in the area.

Chart temporarily affected - Aus 151

665(T)/2021 AUSTRALIA - VICTORIA - Western Port - Hanns Inlet - Light beacons unlit

HMAS Cerberus

The light beacons, *Fl.G.8s* (38° 23'.26 S 145° 13'.95 E) and *Fl.R.8s* (38° 23'.30 S 145° 13'.94 E) are unlit.

Chart temporarily affected - Aus 151

859(T)/2021 AUSTRALIA - VICTORIA - Western Port - Crib Point - Exclusion zone

Maritime Safety Victoria Notice 265(T)/2021

The Ex-HMAS OTAMA (Oberon class submarine) located 800 metres north of Crib Point jetty has been relocated to position 38° 20'.66 S 145° 13'.27 E, with a 200 metre exclusion zone.

A 200 metre exclusion zone remains at its previous location (38° 20'.48 S 145° 13'.45 E).

Mariners are advised to navigate with caution in the area.

Chart temporarily affected - Aus 151

1033(T)/2021 AUSTRALIA - VICTORIA - Port Phillip - Beaumaris Bay - Buoy

Parks Victoria Notice 353(T)/2021

A special buoy exists in position 37° 59'.50 S 145° 03'.56 E.

Chart temporarily affected - Aus 155

81(T)/2022 AUSTRALIA - VICTORIA - Geelong - Survey

Ports Victoria Notice 025(T)/2022

The jack up barge *JUB II* and support vessel *Taurus (MB 209)* are conducting geotech operations in the vicinity of position 38° 05'.32 S 144° 23'.34 E.

All vessels will display appropriate lights and shapes and will monitor VHF Ch 12/16. A 100 m exclusion zone around barge is requested.

Mariners are advised to navigate with caution in the area.

Chart temporarily affected - Aus 157

90(T)/2022 AUSTRALIA - VICTORIA - Western Port - Exclusion zone

Ports Victoria NTM 015-22

All unauthorised vessels within Port of Hastings waters are prohibited from entering within 100 metres of the vessel *SUISSO FRONTIER* during transit and while berthed.

Mariners are advised to navigate with caution in the area.

Chart temporarily affected - Aus 151 - Aus 801 - Aus 4709 (INT 709)

294(T)/2022 AUSTRALIA - VICTORIA - Port Phillip - Point Wilson - Exclusion zone

Former Notice - 1078(T)/2021 is cancelled

Victorian Regional Channels Authority Notice 239/2020, Parks Victoria Notice 104/2022

A 300m exclusion zone exists outwards from the centreline of Point Wilson Pier (38° 05'.54 S 144° 31'.48 E). It is marked by special light buoys, *Iso.2s*, in the following positions:

38° 05'.51 S 144° 30'.73 E

38° 05'.68 S 144° 31'.32 E

38° 05'.84 S 144° 31'.86 E

38° 05'.89 S 144° 32'.45 E

38° 05'.64 S 144° 32'.48 E

38° 05'.55 S 144° 32'.04 E

38° 05'.38 S 144° 31'.47 E

38° 05'.20 S 144° 30'.93 E.

Only vessels involved in the remediation works are permitted to enter the area.

Mariners are advised to navigate with caution in the area.

Chart temporarily affected - Aus 143 - Aus 157

630(T)/2022 AUSTRALIA - VICTORIA - Cape Duquesne - Scientific instruments

Maritime Safety Victoria Notice 165(T)/2019

Scientific instruments exist as follows:

<i>Position</i>	<i>Remarks</i>
-----------------	----------------

38° 24'.52 S 141° 16'.26 E	25m below surface
38° 24'.24 S 141° 17'.48 E	84m below surface
38° 24'.10 S 141° 18'.04 E	76m below surface
38° 23'.97 S 141° 18'.60 E	69m below surface
38° 23'.83 S 141° 19'.16 E	70m below surface
38° 23'.69 S 141° 19'.73 E	67m below surface
38° 23'.56 S 141° 20'.25 E	67m below surface
38° 23'.44 S 141° 20'.73 E	61m below surface
38° 23'.34 S 141° 21'.18 E	50m below surface
38° 23'.24 S 141° 21'.57 E	30m below surface
38° 23'.15 S 141° 21'.91 E	18m below surface.

Chart temporarily affected - Aus 140 - Aus 348 - Aus 349

747(T)/2022 AUSTRALIA - VICTORIA - Ninety Mile Beach - Traffic separation scheme southwestwards

Australian Maritime Safety Authority

Decommissioning of oil and gas infrastructure will take place at Blackback Prod Well (38° 32'.42 S 148° 33'.24 E), Gudgeon Well (38° 30'.82 S 148° 28'.17 E) and Terakihi Well (38° 30'.27 S 148° 32'.89 E).

New temporary shipping fairways and a separation zone have been established to keep transiting ships away from decommissioning activities. The new shipping fairways and separation zone are bound by the following positions:

Northeast bound lane	38° 36'.941 S	148° 45'.842 E
	38° 39'.507 S	148° 48'.047 E
	38° 44'.600 S	148° 23'.000 E
	38° 42'.034 S	148° 20'.795 E.
Southwest bound lane	38° 33'.407 S	148° 42'.545 E
	38° 35'.750 S	148° 44'.746 E
	38° 40'.844 S	148° 19'.699 E
	38° 38'.500 S	148° 17'.500 E.
Separation zone	38° 35'.750 S	148° 44'.746 E
	38° 36'.941 S	148° 45'.842 E
	38° 42'.034 S	148° 20'.795 E
	38° 40'.844 S	148° 19'.699 E.

The fairways and separation zone come into effect on 1 August 2022 at 0000 UTC and will remain in place until further notice.

Mariners should follow the appropriate traffic lane and navigate in the general direction of traffic flow for that lane. They should, as far as practicable, keep clear of the separation zone.

Due to an increased risk of collision, particularly with vessels that may be restricted in their ability to manoeuvre, mariners should keep a good look out and take early action to avoid collisions.

Note: For e-notice users, please see full edition for map.

**IMO-adopted Traffic Separation Scheme (TSS)
Bass Strait, Victoria, and temporary shipping fairway proposal**

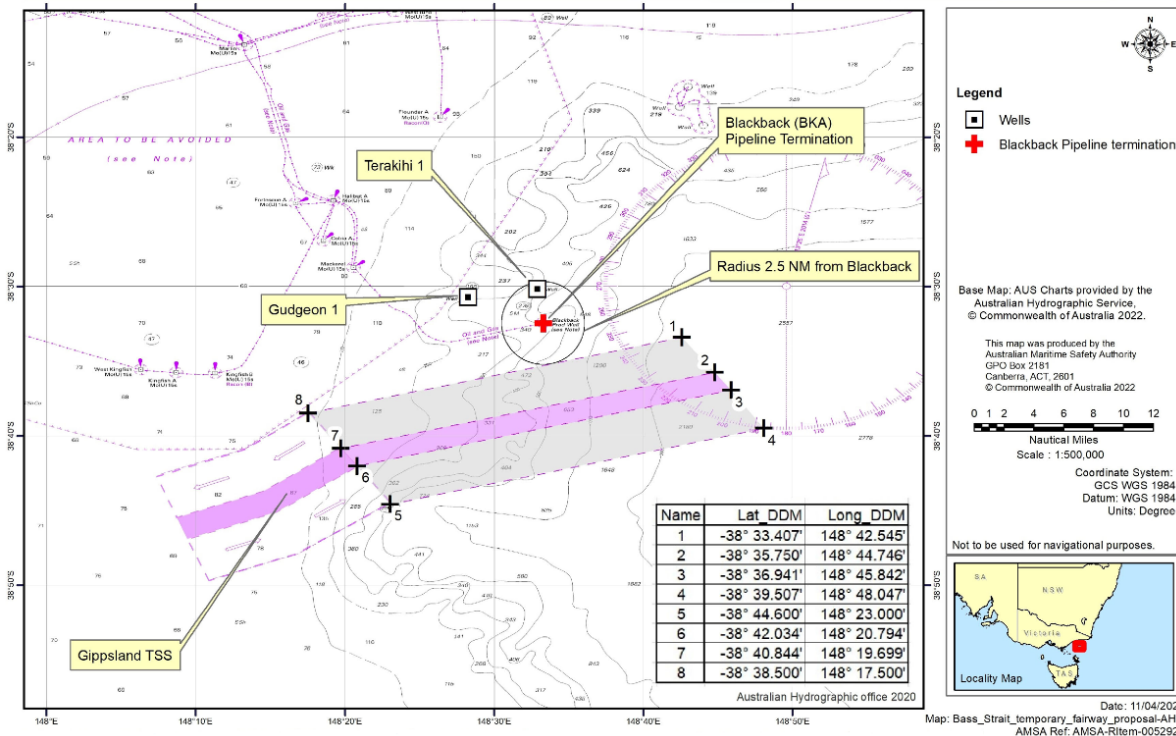


Chart temporarily affected - Aus 357 - Aus 487

754(T)/2022 AUSTRALIA - BASS STRAIT - Racon non operational
Australian Maritime Safety Authority Auscoast Warning 171/2021

The racon at the *Flounder A* platform (38° 18'.65 S 148° 26'.36 E) is non operational.

Chart temporarily affected - Aus 357 - Aus 487

804(T)/2022 AUSTRALIA - VICTORIA - Western Port - Warneet - Jetty closed
Parks Victoria Notice 327/2022

The jetty (38° 13'.66 S 145° 18'.35 E) has been deemed unsafe for public use and has been closed.

Temporary berthing is available at the floating pontoon.

Chart temporarily affected - Aus 151

914(T)/2022 AUSTRALIA - VICTORIA - Port Phillip - Clifton Springs - Artificial reef
Parks Victoria Notice 368(T)/2022

Works to establish an artificial reef are in progress in the vicinity of position 38° 09'.06 S 144° 33'.88 E.

Mariners are advised to navigate with caution in the area.

Chart temporarily affected - Aus 157

112(T)/2023 AUSTRALIA - VICTORIA - Ninety Mile Beach - Virtual AIS southeastwards
Australian Maritime Safety Authority

Special virtual AIS have been established in the Gippsland region to denote an area of oil and gas decommissioning work in the following positions:

- 38° 23'.54 S 148° 36'.38 E
- 38° 24'.59 S 148° 30'.93 E
- 38° 25'.75 S 148° 25'.49 E
- 38° 29'.10 S 148° 36'.38 E

38° 31'.31 S 148° 25'.49 E
38° 34'.65 S 148° 36'.38 E
38° 35'.76 S 148° 30'.93 E
38° 36'.87 S 148° 25'.49 E.

Transiting ships are requested to keep clear of the area marked by the special virtual AIS.

ANTM 747(T)/2022 refers.

Chart temporarily affected - Aus 357 - Aus 487

465(T)/2023 AUSTRALIA - VICTORIA - Port Phillip Bay - Wreck
Ports Victoria Notice 218(T)/2023

A wreck, least depth 11₄m, exists in position 37° 55'.93 S 144° 56'.86 E.

Chart temporarily affected - Aus 143 - Aus 155

589(T)/2023 AUSTRALIA - VICTORIA - Port Phillip - South Channel - Light beacon destroyed
Ports Victoria Notice 272(T)/2023

The port lateral light beacon, *Fl.R.3s* (38° 18'.88 S 144° 48'.86 E), has been destroyed; a port lateral virtual AIS and a port lateral light buoy, *Fl.R.3s*, exist in situ.

Chart temporarily affected - Aus 143

727(T)/2023 AUSTRALIA - VICTORIA - Port Phillip - Williamstown - Harbour works
Department of Transport WA Notice 1852/2022

On or about 21 August 2023, vessels *SEP FUJI*, *Dumb Barge Gippsland*, *Jack Up Barge 2*, *Steel Punt Barge 92* and support vessels will be conducting works associated with the demolition and removal of the piers in positions 37° 51'.67 S 144° 54'.68 E and 37° 51'.70 S 144° 54'.63 E.

An exclusion zone exists as follows:

<i>Position</i>	<i>Remarks</i>
37° 51'.69 S 144° 54'.59 E	
37° 51'.68 S 144° 54'.60 E	marked by special light buoy, <i>Fl.Y4s</i>
37° 51'.63 S 144° 54'.64 E	marked by special light buoy, <i>Fl.Y4s</i>
37° 51'.58 S 144° 54'.68 E	marked by special light buoy, <i>Fl.Y4s</i>
37° 51'.60 S 144° 54'.72 E	marked by special light buoy, <i>Fl.Y4s</i>
37° 51'.61 S 144° 54'.77 E	marked by special light buoy, <i>Fl.Y4s</i>
37° 51'.62 S 144° 54'.79 E	
37° 51'.72 S 144° 54'.68 E.	

Only authorised vessels are permitted to enter the area.

Mariners are advised to navigate with caution in the area.

Chart temporarily affected - Aus 155

832(T)/2023 AUSTRALIA - VICTORIA - Phillip Island - Research operations southwards
Phillip Island Nature Parks

Unmanned surface vehicle (USV), *SailBuoy*, is conducting research operations in an area bounded by the following positions:

38° 22'.87 S 144° 29'.62 E
39° 05'.74 S 143° 47'.33 E
39° 29'.64 S 144° 17'.72 E
39° 41'.70 S 145° 32'.60 E
39° 41'.22 S 146° 02'.35 E
39° 27'.36 S 146° 07'.34 E
38° 57'.48 S 145° 56'.99 E
38° 39'.43 S 145° 43'.80 E
38° 31'.15 S 145° 17'.01 E
38° 30'.85 S 144° 55'.17 E
38° 22'.80 S 144° 43'.20 E.

The USV is white and lit with a white light.

Mariners are advised to navigate with caution in the area.

Chart temporarily affected - Aus 143 - Aus 151 - Aus 349 - Aus 487 - Aus 801 - Aus 802

834(T)/2023 AUSTRALIA - VICTORIA - Port Phillip - Scientific instruments

Former Notice - 82(T)/2023 is cancelled

Ports Victoria Notice 365(T)/2023

Special light buoys, *Fl.Y.2-5s*, exist in the following positions:

37° 58'.72 S 144° 59'.73 E

37° 59'.10 S 144° 46'.51 E

38° 03'.81 S 144° 52'.01 E

38° 08'.16 S 144° 45'.18 E

38° 09'.73 S 145° 03'.26 E

38° 18'.09 S 144° 52'.36 E.

Chart temporarily affected - Aus 143 - Aus 155 - Aus 157

909(T)/2023 AUSTRALIA - VICTORIA - Port Phillip - Port Melbourne Channel - Light beacon destroyed

Former Notice - 776(T)/2023 is cancelled

Ports Victoria Notice 411(T)/2023

The port lateral light beacon, *Fl(2)R.4s No8* (37° 53'.86 S 144° 55'.58 E), has been destroyed; a virtual AIS exists in situ.

A port lateral light buoy, *Fl(2)R.4s*, exists in position 37° 53'.83 S 144° 55'.59 E.

Mariners are advised to navigate with caution in the area.

Chart temporarily affected - Aus 155

948(T)/2023 AUSTRALIA - VICTORIA - Port Phillip - Mornington - Light beacon removed

Former Notice - 871(T)/2023 is cancelled

Parks Victoria Notice 427(T)/2021, 376/2023, 424(T)/2023

The west cardinal light beacon, *VQ(9)10s* (38° 13'.42 S 145° 01'.58 E), has been removed; a west cardinal light buoy, *VQ(9)10s*, exists in situ.

This buoy replaces the destroyed west cardinal light beacon. Due to local conditions, this buoy is frequently off station.

Chart temporarily affected - Aus 143

1033(T)/2023 AUSTRALIA - VICTORIA - Port Phillip - Point Cole - Light buoy off station westwards

Parks Victoria Notice 452(T)/2023

The special light buoy, *Fl(4)Y.10s RMYSF* (37° 53'.59 S 144° 56'.30 E), is off station.

Chart temporarily affected - Aus 155

80(T)/2024 AUSTRALIA - VICTORIA - Port Phillip - Sandringham - Light buoy off station

Parks Victoria Notice 20(T)/2024

The special light buoy, *Fl(4)Y.10s SYC1* (37° 57'.81 S 144° 58'.88 E), is off station.

Mariners are advised to navigate with caution in the area.

Chart temporarily affected - Aus 155

126(T)/2024 AUSTRALIA - VICTORIA - Ninety Mile Beach - Scientific instrument eastwards

Australian Maritime Safety Authority Auscoast Warning 45/2024, Esso Australia Pty Ltd

A special light buoy, *Fl(5)Y.20s*, exists in position 38° 11'.78 S 148° 23'.65 E.

Chart temporarily affected - Aus 357

128(T)/2024 AUSTRALIA - VICTORIA - Port Phillip - Drilling operations
Ports Victoria Notice 48(T)/2024

Vessel *Fathom II* is conducting drilling operations in the following positions:

38° 08'.42 S 144° 21'.79 E
38° 02'.18 S 144° 41'.95 E
37° 56'.05 S 144° 49'.63 E
38° 07'.12 S 144° 44'.00 E
38° 05'.97 S 144° 43'.52 E
38° 00'.05 S 144° 53'.18 E
37° 52'.69 S 144° 54'.79 E
37° 52'.21 S 144° 56'.03 E.

The vessel will monitor VHF Ch12.

Mariners are advised to navigate with caution in the area with minimal wash and to keep a minimum passing distance of 50m.

Chart temporarily affected - Aus 143 - Aus 155 - Aus 157

197(T)/2024 AUSTRALIA - VICTORIA - Port Phillip - Chelsea - Beacon destroyed
Former Notice - 1032(T)/2021 is cancelled
Parks Victoria Notice 333(T)/2021, 79/2024

The special beacon (38° 03'.47 S 145° 06'.74 E) has been destroyed; a special conical buoy exists in situ.

Chart temporarily affected - Aus 143

338(T)/2024 AUSTRALIA - VICTORIA - Ninety Mile Beach - Restricted areas southeastwards
National Offshore Petroleum Safety and Environmental Management Authority

A restricted area, with radius 500m, exists centred on position 38° 30'.90 S 148° 28'.08 E and 38° 30'.35 S 148° 32'.72 E.

Chart temporarily affected - Aus 357 - Aus 487

340(T)/2024 AUSTRALIA - VICTORIA - Port Phillip - Sorrento - Harbour works
Parks Victoria Notice 155(T)/2024

Construction works are in progress at Sorrento Ferry Terminal (38° 20'.16 S 144° 44'.75 E).

An exclusion zone exists in an area bounded by the coast and the following:

<i>Position</i>	<i>Remarks</i>
38° 20'.20 S 144° 44'.72 E	marked by buoy
38° 20'.21 S 144° 44'.74 E	marked by buoy
38° 20'.21 S 144° 44'.76 E	marked by buoy
38° 20'.22 S 144° 44'.80 E	marked by buoy
38° 20'.23 S 144° 44'.83 E	marked by buoy
38° 20'.16 S 144° 44'.78 E.	

Only vessels involved in the works, Searoad Ferries and Parks Victoria officers are permitted to enter the area.

All hazards to navigation will display appropriate lights and shapes.

Mariners are advised to navigate with caution in the area.

Chart temporarily affected - Aus 143

376(T)/2024 AUSTRALIA - VICTORIA - Ninety Mile Beach - Platform unlit eastwards
Australian Maritime Safety Authority Auscoast Warning 24/2024

The *Kingfish B* platform, *Mo(U)15s* (38° 35'.82 S 148° 11'.28 E), is unlit.

Chart temporarily affected - Aus 357 - Aus 487 - Aus 4601 (INT 601)

425(T)/2024 AUSTRALIA - VICTORIA - Western Port - North Arm - Scientific instruments
Parks Victoria Notice 180(T)/2024

Special light buoys, *Fl. Y. 3s*, exist in the following positions:

38° 15'.95 S 145° 16'.56 E

38° 16'.56 S 145° 20'.53 E

38° 16'.79 S 145° 14'.23 E

38° 21'.34 S 145° 13'.28 E

38° 24'.04 S 145° 15'.78 E.

Chart temporarily affected - Aus 151

504(T)/2024 AUSTRALIA - VICTORIA - Port Phillip - Point Wilson Bank - Light buoy off station
Ports Victoria Notice 248(T)/2024

The special light buoy, *Fl. Y. 6s* (38° 06'.10 S 144° 31'.24 E), is off station.

Mariners are advised to navigate with caution in the area.

Chart temporarily affected - Aus 157

625(T)/2024 AUSTRALIA - VICTORIA - Western Port - North Arm - Scientific instrument
Ports Victoria Notice 302(T)/2024

A subsurface scientific instrument, 1m above the seabed, exists in position 38° 19'.79 S 145° 13'.93 E.

Mariners are advised to navigate with caution in the area.

Chart temporarily affected - Aus 151

659(T)/2024 AUSTRALIA - VICTORIA - Corner Inlet - Scientific instruments eastwards
Former Notice - 169(T)/2024 is cancelled
RPS Group

Subsurface scientific instruments, 20m below the surface, exist in the following positions:

38° 45'.19 S 147° 05'.63 E

38° 50'.96 S 147° 17'.54 E

38° 55'.81 S 146° 50'.01 E

39° 03'.61 S 147° 39'.05 E

39° 21'.71 S 146° 58'.05 E.

Chart temporarily affected - Aus 357 - Aus 487 - Aus 802

725(T)/2024 AUSTRALIA - VICTORIA - Corner Inlet - Toora Channel - Light beacon destroyed
Gippsland Ports Notice 357/2024

The port lateral light beacon, *Fl. R. 4s No6* (38° 43'.86 S 146° 22'.81 E), has been destroyed.

Mariners are advised to navigate with caution in the area.

Chart temporarily affected - Aus 181

760(T)/2024 AUSTRALIA - VICTORIA - Barwon Head - Light buoy off station
Safe Transport Victoria Notice 386(T)/2024

The south cardinal light buoy, *Q(6)+LFl. 15s* (38° 17'.29 S 144° 30'.57 E), is off station.

Mariners are advised to navigate with caution in the area.

Chart temporarily affected - Aus 143

761(T)/2024 AUSTRALIA - VICTORIA - Port Campbell - Subsea operations southwards
Beach Energy Limited

Vessel *Seven Pegasus* and an ROV are conducting subsea operations in an area bounded by the following positions:

39° 17'.00 S 142° 48'.00 E

39° 17'.00 S 142° 57'.00 E

39° 11'.00 S 142° 57'.00 E

39° 11'.00 S 142° 48'.00 E.

Mariners are advised to navigate with caution in the area.

Chart temporarily affected - Aus 349

762(T)/2024 AUSTRALIA - VICTORIA - Port Phillip - Mordialloc - Buoy off station

Parks Victoria Notice 400(T)/2024

The special buoy (38° 00'.26 S 145° 04'.60 E) is off station.

Mariners are advised to navigate with caution in the area.

Chart temporarily affected - Aus 155

763(T)/2024 AUSTRALIA - VICTORIA - Port Phillip - Sandringham - Light beacon unlit

Parks Victoria Notice 121(T)/2019, 285(T)/2019, 368(T)/2024

The starboard lateral light beacon, *Fl(2)G.5s 5m 4M* (37° 56'.48 S 144° 59'.56 E), is unlit; a starboard lateral buoy exists in position 37° 56'.51 S 144° 59'.53 E.

Chart temporarily affected - Aus 143 - Aus 155

764(T)/2024 AUSTRALIA - VICTORIA - Port Phillip - Altona Reef - Light buoy off station southeastwards

Parks Victoria Notice 380(T)/2024

The special light buoy, *Fl.Y.4s P3* (37° 53'.39 S 144° 52'.85 E), is off station.

Mariners are advised to navigate with caution in the area.

Chart temporarily affected - Aus 143 - Aus 155

TASMANIA

627(T)/2016 AUSTRALIA - TASMANIA - Pipe Clay Head to Pitt Water - Scientific instruments

Former Notice - 309(T)/2014 is cancelled

University of Tasmania

Subsurface scientific instruments exist in the following positions:

42° 48'.25 S 147° 29'.91 E
42° 48'.29 S 147° 31'.42 E
42° 48'.43 S 147° 30'.02 E
42° 49'.18 S 147° 34'.71 E
42° 50'.70 S 147° 33'.57 E
42° 50'.74 S 147° 35'.11 E
42° 50'.90 S 147° 36'.91 E
42° 51'.05 S 147° 32'.08 E
42° 51'.33 S 147° 35'.89 E
42° 51'.69 S 147° 34'.85 E
42° 51'.82 S 147° 30'.92 E
42° 51'.82 S 147° 33'.36 E
42° 52'.35 S 147° 32'.10 E
42° 52'.70 S 147° 36'.29 E
42° 52'.94 S 147° 34'.16 E
42° 53'.24 S 147° 31'.16 E
42° 53'.79 S 147° 32'.67 E
42° 53'.88 S 147° 37'.33 E
42° 54'.20 S 147° 35'.44 E
42° 54'.37 S 147° 30'.53 E
42° 54'.47 S 147° 40'.80 E
42° 54'.67 S 147° 33'.87 E
42° 54'.92 S 147° 40'.78 E
42° 55'.13 S 147° 31'.80 E
42° 55'.36 S 147° 40'.76 E
42° 55'.81 S 147° 40'.74 E
42° 56'.99 S 147° 39'.68 E
42° 57'.04 S 147° 38'.01 E
42° 57'.15 S 147° 39'.22 E
42° 57'.15 S 147° 37'.41 E
42° 57'.28 S 147° 36'.79 E
42° 57'.40 S 147° 36'.20 E
42° 57'.51 S 147° 35'.59 E
42° 57'.62 S 147° 34'.99 E
42° 57'.73 S 147° 34'.44 E
42° 57'.86 S 147° 33'.85 E
42° 57'.96 S 147° 33'.30 E.

Chart temporarily affected - Aus 171 - Aus 796

263(T)/2018 AUSTRALIA - TASMANIA - Devonport - Shoaling

HydroSurvey Australia

Shoaling exists in the Mersey River between positions 41° 11'.20 S 146° 21'.98 E and 41° 11'.48 S 146° 22'.10 E.

Mariners are advised to navigate with caution in the area.

Chart temporarily affected - Aus 164

183(P)/2020 AUSTRALIA - TASMANIA - North West Bay - Barretta - Infrastructure

A Boon

The marina pontoons have been extended to seaward (43° 02'.95 S 147° 16'.14 E).

Mariners are advised to navigate with caution in the area.

Charts will updated in due course.

Chart which will be affected - Aus 171 - Aus 174

522(T)/2020 AUSTRALIA - TASMANIA - D'Entrecasteaux Channel - Tower Bay - Harbour works; light buoys
Marine and Safety Tasmania Notice M98/2020

Mooring works are in progress, marked by special light buoys as follows:

<i>Position</i>	<i>Remarks</i>
43° 23'.38 S 147° 02'.34 E	<i>Fl. Y.4s</i>
43° 23'.46 S 147° 02'.27 E	<i>Fl. Y.4s</i>
43° 23'.36 S 147° 01'.98 E	
43° 23'.28 S 147° 02'.05 E	

Chart temporarily affected - Aus 173

733(T)/2020 AUSTRALIA - TASMANIA - Burnie - Harbour works

Former Notice - 47(T)/2019 is cancelled

Marine and Safety Tasmania Notice M217/2018, Toll Group

Harbour works associated with the extension of the wharf at berth 5 (41° 03'.04 S 145° 54'.70 E) are in progress.

Mariners are advised to navigate with caution in the area.

Chart temporarily affected - Aus 163

673(T)/2021 AUSTRALIA - TASMANIA - Maria Island - Scientific instruments

Marine and Safety Tasmania

Subsurface scientific instruments exist on the seabed in the following positions:

42° 40'.08 S 147° 58'.04 E
42° 39'.99 S 147° 58'.60 E
42° 39'.91 S 147° 59'.16 E
42° 39'.82 S 147° 59'.72 E
42° 39'.74 S 148° 00'.28 E
42° 39'.08 S 148° 10'.40 E
42° 39'.28 S 148° 10'.92 E
42° 39'.48 S 148° 11'.44 E
42° 39'.68 S 148° 11'.96 E
42° 39'.88 S 148° 12'.49 E
42° 40'.08 S 148° 13'.01 E
42° 40'.28 S 148° 13'.53 E
42° 40'.48 S 148° 14'.05 E
42° 40'.68 S 148° 14'.57 E
42° 40'.88 S 148° 15'.10 E
42° 41'.08 S 148° 15'.62 E
42° 41'.28 S 148° 16'.14 E
42° 41'.48 S 148° 16'.66 E
42° 41'.68 S 148° 17'.18 E
42° 41'.88 S 148° 17'.71 E
42° 42'.08 S 148° 18'.23 E
42° 42'.28 S 148° 18'.75 E
42° 42'.48 S 148° 19'.27 E
42° 42'.68 S 148° 19'.79 E
42° 42'.87 S 148° 20'.32 E
42° 43'.07 S 148° 20'.84 E
42° 43'.26 S 148° 21'.26 E.

Chart temporarily affected - Aus 766 - Aus 797

677(T)/2021 AUSTRALIA - TASMANIA - North West Bay - Mooring area

Marine and Safety Tasmania Notice M106/2021

A mooring area, marked by special light buoys, exists in an area bounded by the following positions:

43° 02'.75 S 147° 17'.91 E
43° 02'.66 S 147° 18'.04 E
43° 02'.74 S 147° 18'.15 E
43° 02'.82 S 147° 18'.00 E.

Mariners are advised to navigate with caution in the area.

Chart temporarily affected - Aus 171

722(T)/2021 AUSTRALIA - TASMANIA - Port Dalrymple - Bell Bay - Harbour works
Marine and Safety Tasmania Notice M207/2021

Remediation works are in progress at Bell Bay Berth 6 (41° 08'.39 S 146° 51'.14 E).

Mariners are advised to navigate with caution in the area.

Chart temporarily affected - Aus 167

916(T)/2022 AUSTRALIA - TASMANIA - Devonport - Virtual AIS
Marine and Safety Tasmania Notice M373(T)/2022

A reduced width of the channel is marked by virtual AIS as follows:

<i>Position</i>	<i>Remarks</i>
41° 10'.43 S 146° 21'.85 E	starboard lateral AIS
41° 10'.45 S 146° 21'.93 E	port lateral AIS
41° 10'.45 S 146° 21'.84 E	starboard lateral AIS
41° 10'.50 S 146° 21'.82 E	starboard lateral AIS
41° 10'.51 S 146° 21'.91 E	port lateral AIS
41° 10'.57 S 146° 21'.89 E	port lateral AIS.

Chart temporarily affected - Aus 164

83(T)/2023 AUSTRALIA - TASMANIA - Devonport - Harbour works
Marine and Safety Tasmania Notice M10(T)/2023

Demolition works are in progress in the vicinity of berth 3E in an area bounded by the coast and the following positions:

41° 11'.30 S 146° 22'.14 E
41° 11'.32 S 146° 22'.09 E
41° 11'.15 S 146° 21'.97 E
41° 11'.11 S 146° 21'.97 E
41° 11'.07 S 146° 21'.99 E
41° 10'.94 S 146° 21'.98 E
41° 10'.94 S 146° 22'.00 E.

Vessels will display appropriate lights and shapes and will monitor VHF Ch 14.

Mariners are advised not to enter the works area unless they are required to utilise the swing basin. These vessels must obtain approval from Devonport VTS prior to arrival and departure.

Chart temporarily affected - Aus 164

167(T)/2023 AUSTRALIA - TASMANIA - King Island - Grassy Harbour - Platform, submarine cable, prohibited area
Marine and Safety Tasmania Notice M19/2021

A lit platform, *F*, exists in position 40° 03'.97 S 144° 03'.53 E.

A submarine power cable exists between positions 40° 03'.97 S 144° 03'.53 E and 40° 03'.91 S 144° 03'.53 E.

An entry prohibited area, with radius 125m, exists centred on position 40° 03'.97 S 144° 03'.53 E.

Mariners are advised to navigate with caution in the area.

Chart temporarily affected - Aus 179

375(T)/2023 AUSTRALIA - TASMANIA - Devonport - Mersey River - Berth
Marine and Safety Tasmania Notice M175/2023

Three piles exist in the vicinity of position 41° 11'.44 S 146° 22'.01 E for the temporary berth, Devonport Berth 6 West.

Chart temporarily affected - Aus 164

639(T)/2023 AUSTRALIA - TASMANIA - River Derwent - Flowerpot Point - Kelp longlines; light buoys

Former Notice - 513(T)/2023 is cancelled
Marine and Safety Tasmania Notice M214(T)/2023, M266(T)/2023

Subsurface kelp longlines exist in an area, marked by light buoys, bounded by the following positions:

43° 01'.24 S 147° 20'.24 E
43° 01'.24 S 147° 20'.31 E
43° 01'.04 S 147° 20'.31 E
43° 01'.04 S 147° 20'.24 E.

Vessels not directly involved in the research activities are prohibited from entering the area.

Mariners are advised to navigate with caution in the area.

Chart temporarily affected - Aus 171 - Aus 173

784(P)/2023 AUSTRALIA - TASMANIA - Rocky Cape to East Sandy Point - Shoaling
Australian Hydrographic Office

Latest survey indicates shoaler depths than those charted may exist in an area bounded by the high water line and the following positions:

40° 42'.39 S 145° 05'.11 E
40° 45'.45 S 145° 20'.92 E
40° 56'.19 S 145° 49'.10 E
41° 04'.76 S 146° 11'.06 E
41° 06'.47 S 146° 28'.51 E
41° 01'.97 S 146° 42'.97 E
40° 56'.62 S 146° 55'.07 E
40° 39'.89 S 147° 58'.89 E.

Mariners are advised to navigate with caution in the area.

Electronic Navigation Charts (ENCs) have been updated, Paper Charts will be updated in due course.

Chart which will be affected - Aus 163 - Aus 164 - Aus 167 - Aus 487 - Aus 790 - Aus 798 - Aus 800

839(T)/2023 AUSTRALIA - TASMANIA - Ringarooma Bay - Scientific instrument
Marine and Safety Tasmania Notice M327(T)/2023

A scientific instrument marked by an orange buoy exists in position 40° 49'.55 S 147° 54'.70 E.

Chart temporarily affected - Aus 798

876(T)/2023 AUSTRALIA - TASMANIA - Macquarie Harbour - Scientific instruments
Marine and Safety Tasmania Notice M338(T)/2023

Scientific instruments, 10m below the surface, exist in positions 42° 18'.49 S 145° 23'.01 E and 42° 20'.80 S 145° 25'.22 E.

Chart temporarily affected - Aus 177 - Aus 792

913(P)/2023 AUSTRALIA - TASMANIA - Furneaux Group - Shoaling; islands out of position
Department of Defence

Latest survey indicates islands may be charted out of position and shoaler depths than those charted may exist in an area bounded by the following positions:

39° 54'.53 S 147° 36'.75 E
40° 18'.96 S 147° 45'.90 E
40° 35'.16 S 148° 04'.79 E
40° 36'.96 S 148° 13'.94 E
40° 32'.46 S 148° 19'.18 E
40° 26'.61 S 148° 13'.19 E
39° 44'.03 S 147° 57'.29 E
39° 35'.49 S 147° 48'.00 E
39° 35'.49 S 147° 33'.31 E.

Mariners are advised to navigate with caution in the area.

Charts will be updated in due course.

Chart which will be affected - Aus 179 - Aus 487 - Aus 798 - Aus 800

1034(T)/2023 AUSTRALIA - TASMANIA - Maria Island - Light buoy unlit northeastwards
Marine and Safety Tasmania Notice M405(T)/2023

The special light buoy, *Fl(5)Y.20s* (42° 31'.8 S 148° 21'.0 E), is unlit.

Chart temporarily affected - Aus 766 - Aus 797

85(T)/2024 AUSTRALIA - TASMANIA - Macquarie Harbour - Lit barge
Marine and Safety Tasmania Notice M10/2024

The barge *Wombat* which is marked by a light, *F*, exists in position 42° 17'.55 S 145° 22'.18 E.

Mariners are advised to navigate with caution in the area.

Chart temporarily affected - Aus 177

133(T)/2024 AUSTRALIA - TASMANIA - Macquarie Harbour - Scientific instrument
Marine and Safety Tasmania Notice M36/2024

A scientific instrument, 10m below the surface, exists in position 42° 22'.79 S 145° 28'.84 E.

Chart temporarily affected - Aus 177 - Aus 792

134(T)/2024 AUSTRALIA - TASMANIA - Macquarie Harbour - Scientific instruments
Marine and Safety Tasmania Notice M37/2024

Scientific instruments marked by special buoys exist in the following positions:

42° 16'.92 S 145° 17'.62 E
42° 17'.06 S 145° 19'.03 E
42° 17'.16 S 145° 16'.00 E
42° 19'.38 S 145° 19'.27 E
42° 21'.72 S 145° 32'.22 E
42° 22'.08 S 145° 24'.46 E
42° 24'.24 S 145° 27'.62 E
42° 26'.04 S 145° 26'.91 E.

Chart temporarily affected - Aus 177 - Aus 792

203(T)/2024 AUSTRALIA - TASMANIA - Tasman Peninsula - O'Hara Bluff - Fish aggregating device off station eastwards

Marine and Safety Tasmania Notice M91(T)/2024

The special light buoy, *Fl.Y.3s FAD* (43° 05'.32 S 148° 01'.63 E), is off station.

Chart temporarily affected - Aus 796 - Aus 797

308(T)/2024 AUSTRALIA - TASMANIA - Bruny Island - Labillardiere Peninsula - Point Labillardiere - Scientific instrument

Marine and Safety Tasmania Notice M143(T)/2024

A special light buoy, *Fl.Y.1.5s*, exists in position 43° 26'.45 S 147° 04'.68 E.

Chart temporarily affected - Aus 173 - Aus 795

343(T)/2024 AUSTRALIA - TASMANIA - Franklin Sound - Lady Barron - Wreck
Marine and Safety Tasmania Notice M159(T)/2024

A wreck marked by an isolated danger light buoy, *Q(2)5s*, exists in position 40° 12'.85 S 148° 14'.74 E.

Chart temporarily affected - Aus 179

344(T)/2024 AUSTRALIA - TASMANIA - Macquarie Harbour - Scientific instrument
Marine and Safety Tasmania Notice M155(T)/2024

A scientific instrument, 10m below the surface, exists in position 42° 18'.56 S 145° 23'.32 E.

Chart temporarily affected - Aus 177 - Aus 792

384(T)/2024 AUSTRALIA - TASMANIA - Burnie - Scientific instrument northwards
Marine and Safety Tasmania Notice M180(T)/2024

A pink buoy exists in position 40° 56'.51 S 145° 56'.06 E.

Chart temporarily affected - Aus 163

426(T)/2024 AUSTRALIA - TASMANIA - Huon River - Brooks Bay - Wreck
Former Notice - 385(T)/2024 is cancelled
Marine and Safety Tasmania Notice M189(T)/2024

A stranded wreck exists in position 43° 13'.74 S 147° 01'.53 E.

Mariners are advised to navigate with caution in the area.

Chart temporarily affected - Aus 173

627(T)/2024 AUSTRALIA - TASMANIA - Robbins Island to Rocky Cape - Scientific instruments northeastwards
Maritime and Safety Tasmania Notice M283(T)/2024

Special light buoys, *Fl. Y. 3s*, exist in the following positions:

40° 33'.37 S 145° 05'.92 E

40° 33'.40 S 145° 06'.12 E

40° 33'.45 S 145° 34'.28 E

40° 33'.58 S 145° 34'.04 E

40° 38'.43 S 145° 35'.41 E.

Chart temporarily affected - Aus 487 - Aus 790

687(T)/2024 AUSTRALIA - TASMANIA - River Derwent - Blackamns Bay to Halfmoon Bay - Pipe laying operations
Marine and Safety Tasmania Notice M299(T)/2024

Vessel *Wandana* is conducting pipe laying operations in an area bounded by the following positions:

43° 01'.66 S 147° 24'.96 E

43° 01'.06 S 147° 24'.98 E

43° 00'.07 S 147° 19'.50 E

43° 00'.54 S 147° 19'.41 E.

A 500m clearance is requested around the vessel.

Mariners are advised to navigate with caution in the area.

Chart temporarily affected - Aus 171 - Aus 173

766(T)/2024 AUSTRALIA - TASMANIA - Betsey Island to Saint Helens Point - Scientific instruments off station
Marine and Safety Tasmania Notice M320(T)/2024

The light buoys, *Fl. Y. 3s FAD*, in the followings positions are off station:

41° 14'.48 S 148° 24'.57 E

42° 50'.67 S 147° 56'.03 E

43° 04'.56 S 147° 28'.65 E.

Chart temporarily affected - Aus 171 - Aus 767 - Aus 796 - Aus 797

767(T)/2024 AUSTRALIA - TASMANIA - Furneaux Group - Flinders Island - Survey operations
Ocean Infinity Pty Ltd

On or about 1 October 2024, vessels *Seven Oceans* and *Nostramo* will be conducting survey operations in an area bounded by the following positions:

40° 15'.38 S 147° 22'.19 E
40° 05'.86 S 147° 43'.03 E
40° 00'.02 S 147° 51'.14 E
39° 51'.96 S 147° 48'.33 E
39° 44'.45 S 147° 53'.94 E
39° 36'.91 S 147° 44'.19 E
39° 55'.91 S 147° 23'.60 E.

Subsurface scientific instruments exist on the seabed in the following positions:

39° 44'.8 S 147° 52'.7 E
39° 54'.0 S 147° 45'.9 E
40° 04'.0 S 147° 44'.3 E
40° 10'.2 S 147° 34'.4 E
40° 15'.9 S 147° 21'.9 E
40° 06'.3 S 147° 22'.2 E
39° 55'.7 S 147° 23'.0 E
39° 45'.8 S 147° 34'.7 E
39° 36'.4 S 147° 44'.2 E
40° 00'.4 S 147° 35'.1 E.

Special light buoys may exist in the vicinity of the above positions.

Mariners are advised to navigate with caution in the area.

Chart temporarily affected - Aus 487 - Aus 800

PAPUA NEW GUINEA and SOUTH PACIFIC

789(T)/2018 PAPUA NEW GUINEA - Bismarck Sea - Fish aggregating devices

National Maritime Safety Authority PNG Warning 9/2018

17 fish aggregating devices exist in an area bounded by the following positions:

4° 30'.0 S 149° 55'.0 E

4° 40'.0 S 149° 55'.0 E

4° 40'.0 S 150° 45'.0 E

4° 30'.0 S 150° 45'.0 E.

Mariners are advised to navigate with caution.

Chart temporarily affected - Aus 4622 (INT 622)

286(P)/2019 PAPUA NEW GUINEA - Madang Harbour - Shoaling

LADS Flight

Latest survey shows shoaler depths than those charted may exist in an area bounded by the following positions:

05° 04'.51 S 145° 48'.06 E

05° 11'.75 S 145° 47'.82 E

05° 11'.91 S 145° 49'.61 E

05° 10'.14 S 145° 50'.36 E

05° 04'.14 S 145° 48'.99 E.

Mariners are advised to navigate with caution in the area.

Charts will be updated in due course.

Chart which will be affected - PNG 646

346(T)/2019 PAPUA NEW GUINEA - Huon Gulf - Light buoy off station

National Maritime Safety Authority PNG Notice 9(T)/2017

The isolated danger light buoy, Q(2)5s (6° 48'.38 S 146° 58'.28 E), is off station.

Chart temporarily affected - PNG 643

1110(T)/2019 PAPUA NEW GUINEA - Oreore Channel - Light buoy off station

National Maritime Safety Authority PNG Coastal Navigation Warning 39/2019

The port lateral light buoy, Q.R (10° 13'.68 S 150° 52'.78 E), is off station.

Chart temporarily affected - PNG 628

1331(T)/2019 PAPUA NEW GUINEA - Isulailai Point - Light beacon unlit

National Maritime Safety Authority PNG Warning 43/2019

The light beacon, Fl(2)5s 17m 9M (10° 33'.63 S 150° 41'.71 E), is unlit.

Chart temporarily affected - Aus 625 - PNG 508

668(T)/2020 PAPUA NEW GUINEA - Dauan Island - Light altered

HMAS *Mermaid*

The light, Fl.R.6s (9° 25'.38 S 142° 32'.07 E), has been temporarily altered to F.R.

Chart temporarily affected - Aus 841

771(T)/2020 PAPUA NEW GUINEA - Boera Head - Light unlit

National Maritime Safety Authority PNG Warning 6/2019

The light, Fl.2-5s 33m 10M (9° 23'.39 S 147° 00'.85 E), is unlit.

Chart temporarily affected - PNG 379 - PNG 647

826(P)/2020 PAPUA NEW GUINEA - Batumata Point - Shoaling
LADS Flight

Latest survey shows shoaler depths than those charted may exist in and around the islands and reefs in the area between Galovi (Howard) Reef (10° 11'.1 S 148° 08'.7 E) and Eunoro Island (10° 23'.6 S 149° 27.3 E).

Mariners are advised to navigate with caution in the area.

Charts will be updated in due course.

Chart which will be affected - PNG 506 - PNG 507 - PNG 623

963(T)/2020 PAPUA NEW GUINEA - Caution Bay - Light beacon damaged
National Maritime Safety Authority PNG Notice 39/2020

The light beacon, *Fl.Bu.2s 8M RL2* (9° 17'.98 S 146° 58'.19 E), is damaged and unlit.

Chart temporarily affected - PNG 647 - PNG 648

116(P)/2021 PAPUA NEW GUINEA - Kavieng to Neitab Island - Shoaling
LADS Flight

Latest survey shows shoaler depths than those charted may exist in an area bounded by the coast and the following positions:

2° 22'.61 S 150° 09'.71 E
2° 21'.43 S 150° 08'.54 E
2° 20'.33 S 150° 09'.36 E
2° 18'.98 S 150° 11'.37 E
2° 18'.08 S 150° 15'.72 E
2° 21'.25 S 150° 23'.71 E
2° 27'.18 S 150° 31'.04 E
2° 34'.90 S 150° 35'.68 E
2° 36'.12 S 150° 42'.35 E
2° 36'.96 S 150° 42'.41 E
2° 36'.40 S 150° 35'.77 E
2° 40'.83 S 150° 31'.32 E.

Shoaler depths may also exist between the Kavieng coast (2° 35'.21 S 150° 47'.31 E) and the islands (Nusa, Nusalik and Nago).

Mariners are advised to navigate with caution in the area.

Charts will be updated in due course.

Chart which will be affected - PNG 392 - PNG 393 - PNG 543 - PNG 666

118(T)/2021 PAPUA NEW GUINEA - Madehas Island - Light unlit
National Maritime Safety Authority PNG

The light, *Fl.10s 137m 16M* (5° 27'.63 S 154° 38'.06 E), is unlit.

Chart temporarily affected - Aus 399 - Aus 4604 (INT 604) - Aus 4622 (INT 622) - PNG 397 - PNG 684

481(T)/2021 PAPUA NEW GUINEA - Caution Bay - Light beacon unlit
National Maritime Safety Authority PNG Coastal Navigation Warning 9/2021

The light beacon, *Fl.G.3s 6M* (9° 18'.54 S 146° 57'.25 E), is unlit.

Chart temporarily affected - PNG 647

985(T)/2021 PAPUA NEW GUINEA - Saibai Island - Shoaling
Former Notice - 201(T)/2021 is cancelled

HMAS *Paluma* , HMAS *Mermaid*

Latest survey indicates shoaler depths than those charted exist in an area bounded by the following positions:

9° 20'.66 S 142° 36'.94 E
9° 20'.15 S 142° 39'.81 E
9° 17'.86 S 142° 48'.32 E
9° 21'.86 S 142° 47'.07 E
9° 21'.01 S 142° 40'.60 E
9° 21'.80 S 142° 37'.67 E
9° 22'.75 S 142° 37'.04 E
9° 22'.72 S 142° 35'.37 E
9° 22'.46 S 142° 34'.10 E
9° 21'.74 S 142° 34'.60 E.

Mariners are advised to navigate with caution in the area.

Charts will be updated in due course.

Chart temporarily affected - Aus 840 - Aus 841

1067(T)/2021 PAPUA NEW GUINEA - Tavui Point - Light unlit

National Maritime Safety Authority PNG Coastal Navigation Warning 26/2021

The light, *Fl.8s 47m 18M* (4° 08'.16 S 152° 10'.21 E), is unlit.

Chart temporarily affected - Aus 4604 (INT 604) - Aus 4622 (INT 622) - PNG 545 - PNG 554 - PNG 680

327(T)/2022 PAPUA NEW GUINEA - Bonvouloir Islands - Aulelowa (Hastings) Island - Light unlit

National Maritime Safety Authority PNG Coastal Navigation Warning 8/2022

The light, *Fl(2)6s 8m 10M* (10° 20'.48 S 151° 52'.07 E), is unlit.

Chart temporarily affected - PNG 509 - PNG 512

670(P)/2022 PAPUA NEW GUINEA - Star Reefs Passage - Shoaling

Fugro LADS

Latest survey indicates shoaler depths than those charted may exist in an area bounded by the following positions:

8° 16'.32 S 149° 35'.81 E
8° 17'.57 S 149° 34'.96 E
8° 26'.58 S 149° 42'.16 E
8° 34'.69 S 149° 54'.56 E
8° 33'.37 S 149° 55'.41 E
8° 27'.31 S 149° 50'.78 E.

Mariners are advised to navigate with caution in the area.

Charts will be updated in due course.

Chart which will be affected - PNG 519

785(T)/2022 PACIFIC OCEAN - Scientific instruments

UKHO

Grey pillar buoys exist in the following positions:

5° 02'.3 N 164° 49'.9 E
0° 00'.8 N 164° 59'.8 E
1° 59'.9 S 164° 58'.6 E
5° 01'.0 S 165° 10'.0 E
8° 02'.2 S 164° 46'.4 E.

Chart temporarily affected - Aus 4604 (INT 604)

792(T)/2022 PAPUA NEW GUINEA - Ava Point - Light unlit

National Maritime Safety Authority PNG Coastal Navigation Warning 25/2021

The light, *Fl.12s 188m 10M* (10° 34'.14 S 149° 52'.89 E), is unlit.

Chart temporarily affected - Aus 4604 (INT 604) - PNG 507

794(T)/2022 PAPUA NEW GUINEA - Huon Gulf - Fish aggregating devices

National Maritime Safety Authority PNG Coastal Navigation Warning 8/2018

23 fish aggregating devices exist in an area bounded by the following positions:

7° 00'.0 S 147° 40'.0 E

7° 55'.0 S 147° 40'.0 E

7° 55'.0 S 148° 50'.0 E

7° 00'.0 S 148° 50'.0 E.

Mariners are advised to navigate with caution.

Chart temporarily affected - Aus 4622 (INT 622) - PNG 386 - PNG 521 - PNG 522 - PNG 523

829(T)/2022 PAPUA NEW GUINEA - Dekatuwe (Bright) Island - Light beacon unlit

Former Notice - 500(T)/2022 is cancelled

National Maritime Safety Authority PNG Notice 10/2022, 14/2022

The light beacon, *Fl.2.5s 16m 10M* (10° 31'.89 S 151° 12'.74 E), is unlit.

Chart temporarily affected - PNG 509

830(T)/2022 PAPUA NEW GUINEA - Kanaweya (Shortland) Reefs to Nuakata Passage - Light beacons unlit

National Maritime Safety Authority PNG Notice 15/2022, 16/2022

The light beacons, *Fl(3)12s 11m 10M* (10° 30'.70 S 151° 08'.13 E) and *Fl(2)10s 7m 6M* (10° 23'.60 S 151° 00'.77 E), are unlit.

Chart temporarily affected - PNG 508 - PNG 509 - PNG 628

831(T)/2022 PAPUA NEW GUINEA - Wadei Island - Light beacon unlit

National Maritime Safety Authority PNG Notice 17/2022

The starboard lateral light beacon, *Fl(2)G.8s 7m 3M* (2° 39'.45 S 150° 37'.68 E), is unlit.

Chart temporarily affected - PNG 543 - PNG 666

278(T)/2023 PAPUA NEW GUINEA - Boli Point - Trobriand Islands - Light unlit

National Maritime Safety Authority PNG

The light, *Fl.G.5s* (08° 33'.77 S 151° 01'.10 E) is unlit.

Chart temporarily affected - PNG 516 - PNG 637

279(T)/2023 PAPUA NEW GUINEA - Bomatu Point - Trobriand Islands - Light unlit

National Maritime Safety Authority PNG

The light, *Fl(3)15s 31m 10M* (08° 24'.09 S 151° 07'.20 E) is unlit.

Chart temporarily affected - PNG 516 - PNG 637

282(T)/2023 PAPUA NEW GUINEA - Galagalohi (Gallows) Reef - Goschen Strait - Light unlit

National Maritime Safety Authority PNG

The light, *Fl.5s 7m 10M* (10° 15'.44 S 151° 10'.39 E), is unlit.

Chart temporarily affected - PNG 509 - PNG 513

283(T)/2023 PAPUA NEW GUINEA - Kitava Island - Trobriand Islands - Light unlit

National Maritime Safety Authority PNG

The light, Q (08° 37'.70 S 151° 18'.34 E) is unlit.

Chart temporarily affected - PNG 515 - PNG 516 - PNG 637

285(T)/2023 PAPUA NEW GUINEA - Tamiaris Reef - Laughlan Islands - Light unlit

National Maritime Safety Authority PNG

The light, *Fl(2)8s* (09° 16'.84 S 153° 39'.38 E), is unlit.

Chart temporarily affected - PNG 514

974(T)/2023 PAPUA NEW GUINEA - Buka Passage - Light beacon unlit

National Maritime Safety Authority PNG Coastal Navigation Warning 23/2023

The light beacon, *Fl.2.5s 7m 10M* (5° 24'.39 S 154° 42'.69 E), is unlit.

Chart temporarily affected - Aus 399 - Aus 4622 (INT 622) - PNG 397 - PNG 684

975(T)/2023 PAPUA NEW GUINEA - Rabaul - Light unlit

National Maritime Safety Authority PNG Coastal Navigation Warning 24/2023

The light, *Fl.5s 38m 8M* (4° 11'.71 S 152° 10'.08 E), is unlit.

Chart temporarily affected - PNG 680

288(T)/2024 PAPUA NEW GUINEA - Caution Bay - Light beacon unlit

National Maritime Safety Authority PNG Coastal Navigation Warning 8/2024

The light beacon, *Fl.G.3s 6M G9* (9° 19'.93 S 146° 58'.67 E), is unlit.

Chart temporarily affected - PNG 647 - PNG 648

289(T)/2024 PAPUA NEW GUINEA - Queen Carola Harbour - Light beacon unlit

National Maritime Safety Authority PNG Coastal Navigation Warning 7/2024

The light beacon, *Fl.R.6s* (5° 08'.18 S 154° 32'.92 E), is unlit.

Chart temporarily affected - PNG 684

290(T)/2024 PAPUA NEW GUINEA - Redscar Head - Light unlit

National Maritime Safety Authority PNG Coastal Navigation Warning 5/2024

The light, *Fl.10s 77m 10M* (9° 15'.91 S 146° 54'.03 E), is unlit.

Chart temporarily affected - PNG 379 - PNG 647

367(T)/2024 PAPUA NEW GUINEA - Unei Island - Light unlit

National Maritime Safety Authority PNG Coastal Navigation Warning 12/2024

The light, *Fl(4)16s 9m 10M* (3° 22'.69 S 143° 24'.58 E), is unlit.

Chart temporarily affected - Aus 4622 (INT 622) - PNG 389 - PNG 651

746(P)/2024 PAPUA NEW GUINEA - Rabaul - Coastline

Australian Hydrographic Office

The coastline between Karavia Bay (4° 16'.84 S 152° 09'.83 E) and Nodup (4° 11'.66 S 152° 12'.32 E) may differ to what is currently charted.

Mariners are advised to navigate with caution in the area.

Charts will updated in due course.

Chart which will be affected - PNG 545 - PNG 554 - PNG 680

EAST TIMOR

NIL

MISCELLANEOUS

677(P)/2017 SOLOMON ISLANDS - Honiara and Lungga Roads - Shoaling UKHO

Latest survey shows shoaler depths than those charted may exist in the approaches to Honiara and within Lungga Roads (9° 25'.0 S 159° 58'.8 E).

Charts will updated in due course.

Chart which will be affected - SLB 101

678(T)/2017 SOLOMON ISLANDS - Lungga Point - Light beacon unlit Australian Hydrographic Service

The light beacon, *Fl(3)20s 10m 5M* (9° 24'.26 S 160° 01'.66 E), is unlit.

Chart temporarily affected - SLB 101 - SLB 201

91(P)/2018 SOLOMON ISLANDS - Ghizo Island - Shoaling Secretariat of the Pacific Community

Latest survey shows shoaler depths than those charted may exist in and around the islands and reefs in the area between Naru Island (8° 08'.3 S 156° 55'.1 E) and Sepo Island (8° 03'.2 S 156° 49.5 E).

Mariners are advised to navigate with caution in the area.

Charts will be updated in due course.

Chart which will be affected - SLB 102 - SLB 301 - SLB 302

987(T)/2018 TIMOR-LESTE - Dili - Light unlit HMAS *Paluma*

The light, *Fl.R.4s* (8° 33'.20 S 125° 34'.70 E), is unlit.

Chart temporarily affected - Aus 901

44(P)/2020 SOLOMON ISLANDS - Bina Harbour - Shoaling HMAS *Leeuwin*

Latest survey shows shoaler depths than those charted may exist in Bina Harbour (8° 56'.3 S 160° 45'.0 E).

Mariners are advised to navigate with caution in the area.

Charts will be updated in due course.

Chart which will be affected - SLB 104

406(P)/2020 SOLOMON ISLANDS - Port Noro to Kuri Point - Shoaling *Former Notice - 184(P)/2020 is cancelled* Australian Hydrographic Office , HMAS *Leeuwin*

Latest survey shows shoaler depths than those charted may exist in areas bounded by the following positions:

8° 15'.07 S 157° 11'.77 E

8° 15'.43 S 157° 11'.52 E

8° 15'.78 S 157° 11'.47 E

8° 15'.78 S 157° 12'.00 E

8° 15'.07 S 157° 11'.89 E;

and

8° 19'.68 S 157° 11'.83 E

8° 21'.27 S 157° 12'.62 E

8° 21'.09 S 157° 13'.14 E

8° 19'.05 S 157° 12'.30 E

8° 19'.17 S 157° 11'.76 E.

Mariners are advised to navigate with caution in the area.

Charts will be updated in due course.

Chart which will be affected - SLB 102

80(P)/2022 SOUTHERN OCEAN - Antarctica - Mawson - Shoaling
Australian Antarctic Division

Latest survey indicates shoaling in the approach to Mawson in the following locations

67° 25'.00 S 062° 46'.20 E
67° 29'.58 S 062° 52'.92 E
67° 30'.08 S 062° 50'.45 E
67° 30'.70 S 062° 53'.35 E
67° 30'.45 S 062° 51'.56 E
67° 35'.00 S 062° 52'.25 E

Mariners are advised to navigate with caution in the area.

Charts will be updated in due course.

Chart which will be affected - Aus 600 (INT 9036)

515(T)/2023 SOLOMON ISLANDS - Nusatupe Island - Topmarks destroyed

Former Notice - 847(T)/2018 is cancelled
Solomon Islands Maritime Authority Notice 7/2023

The topmark on light beacons, *Fl(3)R.10s 10m 5M* (8° 05'.55 S 156° 51'.81 E) and *Fl(2)G.10s 8m 3M* (8° 05'.81 S 156° 51'.66 E), have been destroyed.

Chart temporarily affected - SLB 102 - SLB 301 - SLB 302

789(T)/2023 SOLOMON ISLANDS - Munda Point to Sosomboeke Island - Light beacon unreliable; light beacon unlit
Solomon Islands Maritime Authority Notice 12/2023

The light beacon, *Fl.5s 5M* (8° 20'.19 S 157° 13'.77 E), is unreliable.

The light beacon, *Fl(2)10s 10m 10M* (8° 08'.30 S 157° 09'.64 E), is unlit.

Chart temporarily affected - SLB 102 - SLB 302

842(T)/2023 SOLOMON ISLANDS - New Georgia Island - Munda Point - Light beacon unlit
Solomon Islands Maritime Authority Notice 16/2023

The light beacon, *Fl.10s 10m 10M* (8° 23'.02 S 157° 13'.59 E), is unlit.

Chart temporarily affected - Aus 4622 (INT 622) - SLB 302

878(T)/2023 SOLOMON ISLANDS - Honiara - Wrecks
Aero Asahi Corporation

Wrecks exist as follows:

<i>Position</i>	<i>Remarks</i>
9° 25'.38 S 159° 55'.62 E	least depth, 5.1m
9° 25'.56 S 159° 57'.18 E	least depth, 1.3m
9° 25'.68 S 159° 57'.28 E	least depth, 10.7m
9° 25'.70 S 159° 57'.38 E	least depth, 6m
9° 25'.71 S 159° 58'.67 E	least depth, 25.5m.

Chart temporarily affected - SLB 101 - SLB 201

987(P)/2023 SOLOMON ISLANDS - Lungga Roads - Shoaling

Aero Asahi Corporation

Latest survey indicates shoaler depths than those charted may exist in an area bounded by the following positions:

9° 24'.09 S 160° 01'.79 E

9° 24'.09 S 160° 01'.66 E

9° 24'.32 S 160° 01'.11 E

9° 25'.27 S 160° 00'.28 E

9° 25'.43 S 160° 00'.40 E

9° 24'.58 S 160° 01'.12 E

9° 24'.30 S 160° 01'.60 E

9° 24'.32 S 160° 01'.79 E.

Mariners are advised to navigate with caution in the area.

Charts will be updated in due course.

Chart which will be affected - SLB 101

228(T)/2024 SOUTHERN OCEAN - Macquarie Island - Scientific instrument southwestwards
CSIRO

A subsurface scientific instrument, 90m below the surface, exists in the position 55° 47'.62 S 152° 43'.56 E.

Chart temporarily affected - Aus 4074 (INT 74)

387(T)/2024 SOLOMON ISLANDS - Maru Sound - Nort East Entrance - Light buoys off station
Solomon Islands Maritime Authority

The port lateral light buoy, *Fl.R.3s* (9° 46'.81 S 160° 51'.08 E), and the starboard lateral light buoy, *Fl.G.3s* (9° 46'.54 S 160° 50'.48 E), are off station.

Chart temporarily affected - SLB 101

506(T)/2024 SOLOMON ISLANDS - Lengo Channel - Taivu Point - Light beacon unlit
Solomon Islands Maritime Safety Administration

The light beacon, *LFl(2)20s 10m 5M* (9° 24'.54 S 160° 21'.02 E), is unlit.

Chart temporarily affected - SLB 201 - SLB 304

579(T)/2024 SOLOMON ISLANDS - Russell Islands - Lagholon Island - Light unlit
Solomon Islands Maritime Authority

The light, *Fl.10s 11m 10M* (8° 58'.91 S 159° 14'.54 E), is unlit.

Chart temporarily affected - Aus 4060 (INT 60) - Aus 4604 (INT 604) - SLB 105 - SLB 303

726(T)/2024 SOLOMON ISLANDS - Florida Islands - Nggela Sule - Tuituhi Point - Light beacon unlit
Solomon Islands Maritime Authority Notice 13(T)/2024

The light beacon, *Fl(3)20s 10m 10M* (9° 08'.57 S 160° 13'.74 E), is unlit.

Chart temporarily affected - SLB 201 - SLB 304

768(P)/2024 SOLOMON ISLANDS - Diamond Narrows to Munda Bar - Shoaling
Aero Asahi Corporation

Latest survey indicates shoaler depths than those charted may exist between Diamond Narrows (8° 15'.62 S 157° 11'.69 E) and Munda Bar (8° 20'.94 S 157° 12'.72 E).

Mariners are advised to navigate with caution in the area.

Charts will be updated in due course.

Chart which will be affected - SLB 102 - SLB 302

