

To accompany Australian Notice to Mariners 210/2024

ESTUARY AND RIVER ENTRANCES

The crossing of coastal bars and entry to rivers and estuaries is potentially dangerous. Bars and entrances are dynamic in nature, hence the depth and preferred approach may vary. Leading beacons and other navigational aids may not always indicate the best approach. If mariners are unsure of the condition at a particular bar or entrance, local information should be sought prior to crossing.

Note for chart Aus 827

To accompany Australian Notice to Mariners 212/2024

ENVIRONMENTALLY SENSITIVE SEA AREA
(ESSA)

Areas of this chart are Environmentally Sensitive Sea Areas (ESSA). Areas within this marine protected area have restrictions on access and activities. For details see Mariners Handbook for Australian Waters AHP 20.

Note for chart Aus 617

To accompany Australian Notice to Mariners 210/2024

ESTUARY AND RIVER ENTRANCES

The crossing of coastal bars and entry to rivers and estuaries is potentially dangerous. Bars and entrances are dynamic in nature, hence the depth and preferred approach may vary. Leading beacons and other navigational aids may not always indicate the best approach. If mariners are unsure of the condition at a particular bar or entrance, local information should be sought prior to crossing.

Note for chart Aus 828

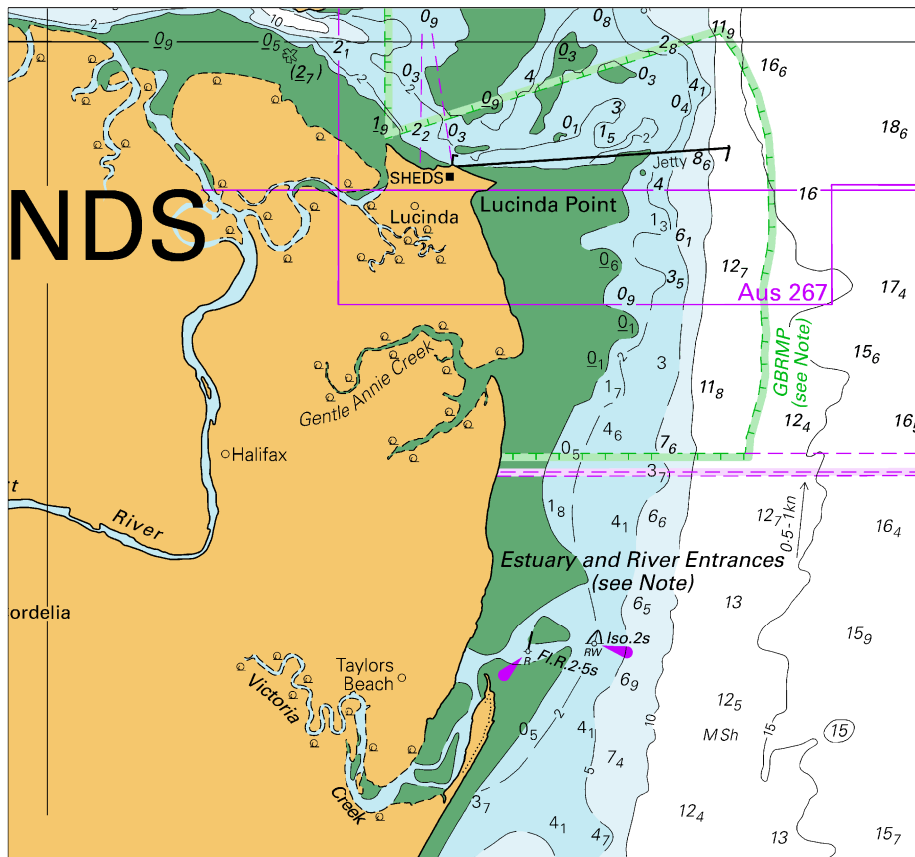
To accompany Australian Notice to Mariners 212/2024

PARTICULARLY SENSITIVE SEA AREA
(PSSA)

The area shown is an IMO approved Particularly Sensitive Sea Area (PSSA). For details see Mariners Handbook for Australian Waters AHP 20.

Note for chart Aus 617

To accompany Australian Notice to Mariners 210/2024



Block for chart Aus 828

© Commonwealth of Australia 2024

(120.9 x 112.4mm)

To accompany Australian Notice to Mariners 211/2024



Block for chart Aus 826

(102.5 x 37.4mm)

© Commonwealth of Australia 2024