

*To accompany Australian Notice to Mariners 665/2024*

UNEXPLODED ORDNANCE (UXO)

The area is safe for surface navigation only; it is not safe for anchoring, trawling or seabed activities. For details see Mariners Handbook for Australian Waters AHP 20.

*Note for chart PNG 684*

*To accompany Australian Notice to Mariners 673/2024*

ENVIRONMENTALLY SENSITIVE SEA AREA (ESSA)

Areas of this chart are Environmentally Sensitive Sea Areas (ESSA). Areas within this marine protected area have restrictions on access and activities. For details see Mariners Handbook for Australian Waters AHP 20.

*Note for chart Aus 400*

*To accompany Australian Notice to Mariners 673/2024*

ENVIRONMENTALLY SENSITIVE SEA AREA (ESSA)

Areas of this chart are Environmentally Sensitive Sea Areas (ESSA). Areas within this marine protected area have restrictions on access and activities. For details see Mariners Handbook for Australian Waters AHP 20.

*Note for chart Aus 608*

*To accompany Australian Notice to Mariners 673/2024*

ENVIRONMENTALLY SENSITIVE SEA AREA (ESSA)

Areas of this chart are Environmentally Sensitive Sea Areas (ESSA). Areas within this marine protected area have restrictions on access and activities. For details see Mariners Handbook for Australian Waters AHP 20.

*Note for chart Aus 4723*

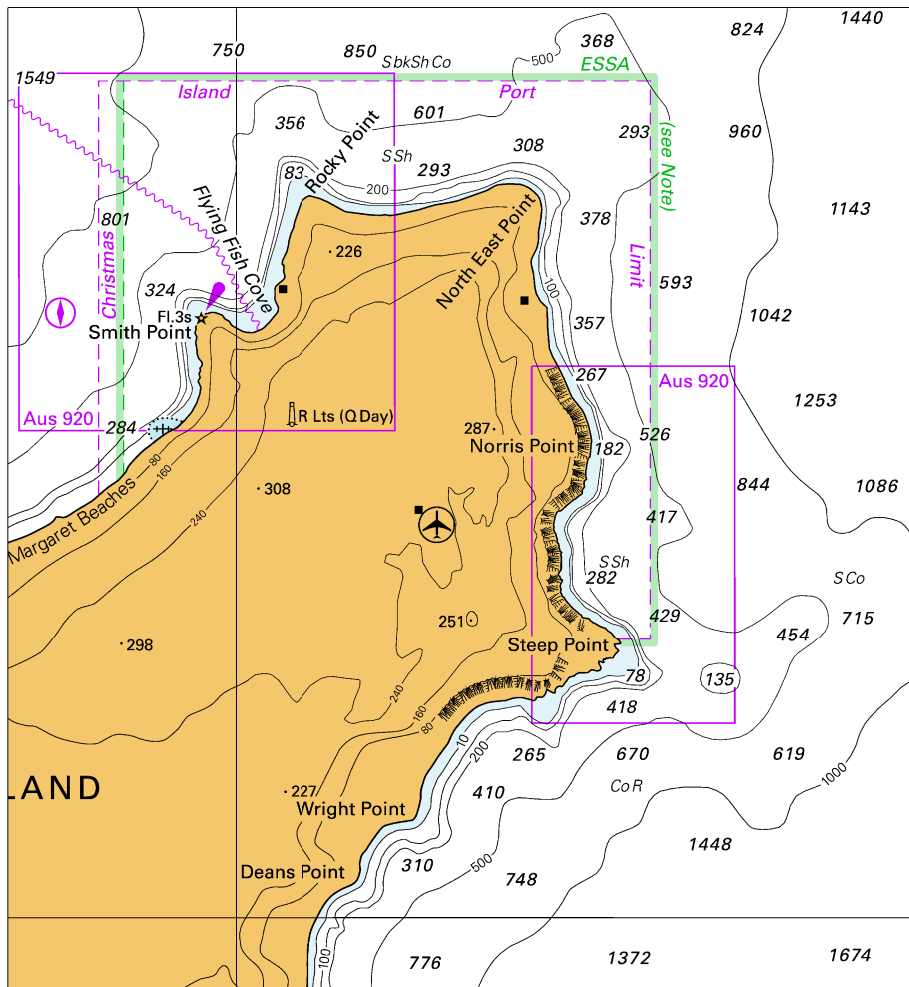
*To accompany Australian Notice to Mariners 674/2024*

ENVIRONMENTALLY SENSITIVE SEA AREA (ESSA)

Areas of this chart are Environmentally Sensitive Sea Areas (ESSA). Areas within this marine protected area have restrictions on access and activities. For details see Mariners Handbook for Australian Waters AHP 20.

*Note for chart Aus 4714*

To accompany Australian Notice to Mariners 673/2024

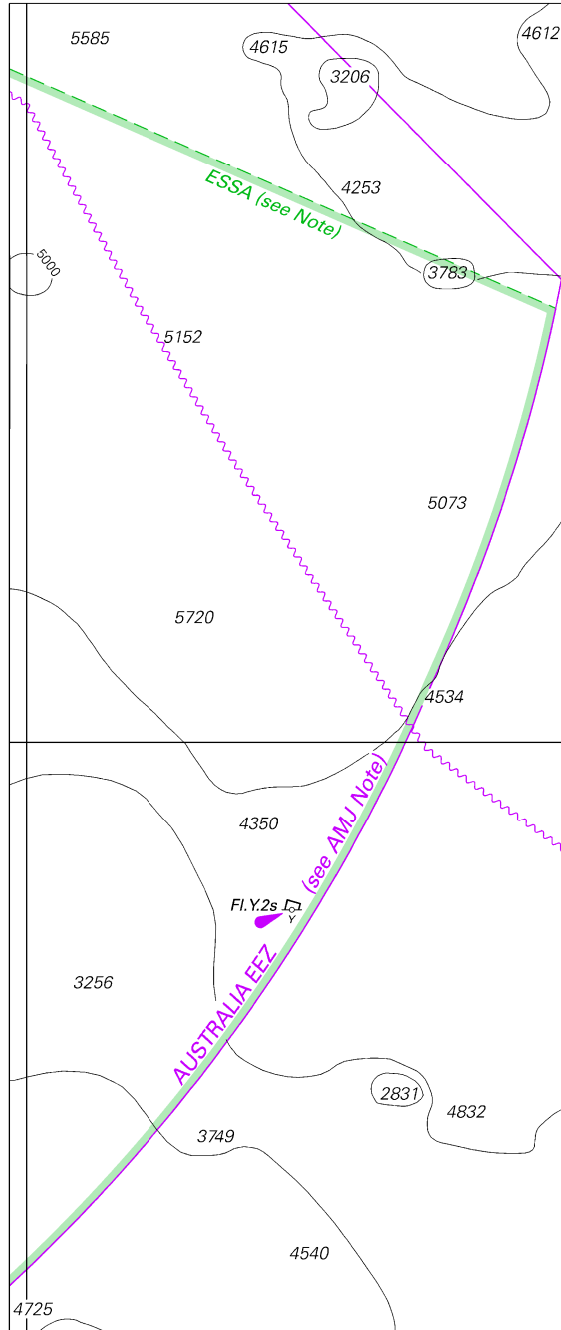


Block for chart Aus 608

© Commonwealth of Australia 2024

(120.2 x 129.7mm)

To accompany Australian Notice to Mariners 673/2024

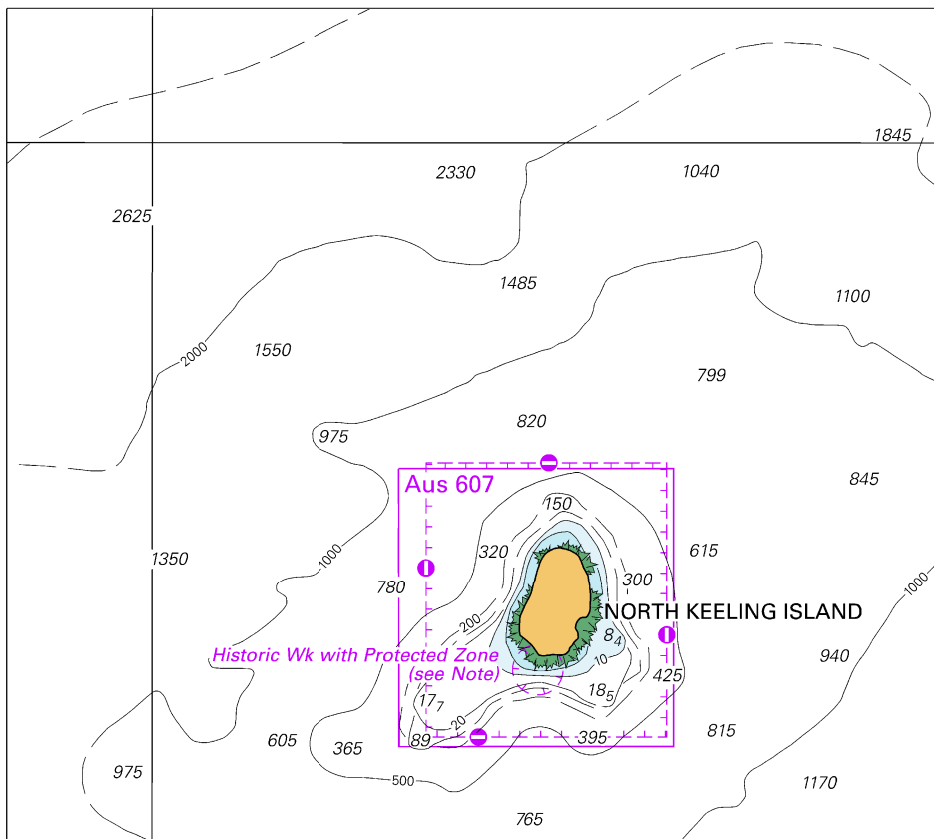


Block for chart Aus 4723

(74.1 x 175.8mm)

© Commonwealth of Australia 2024

To accompany Australian Notice to Mariners 674/2024

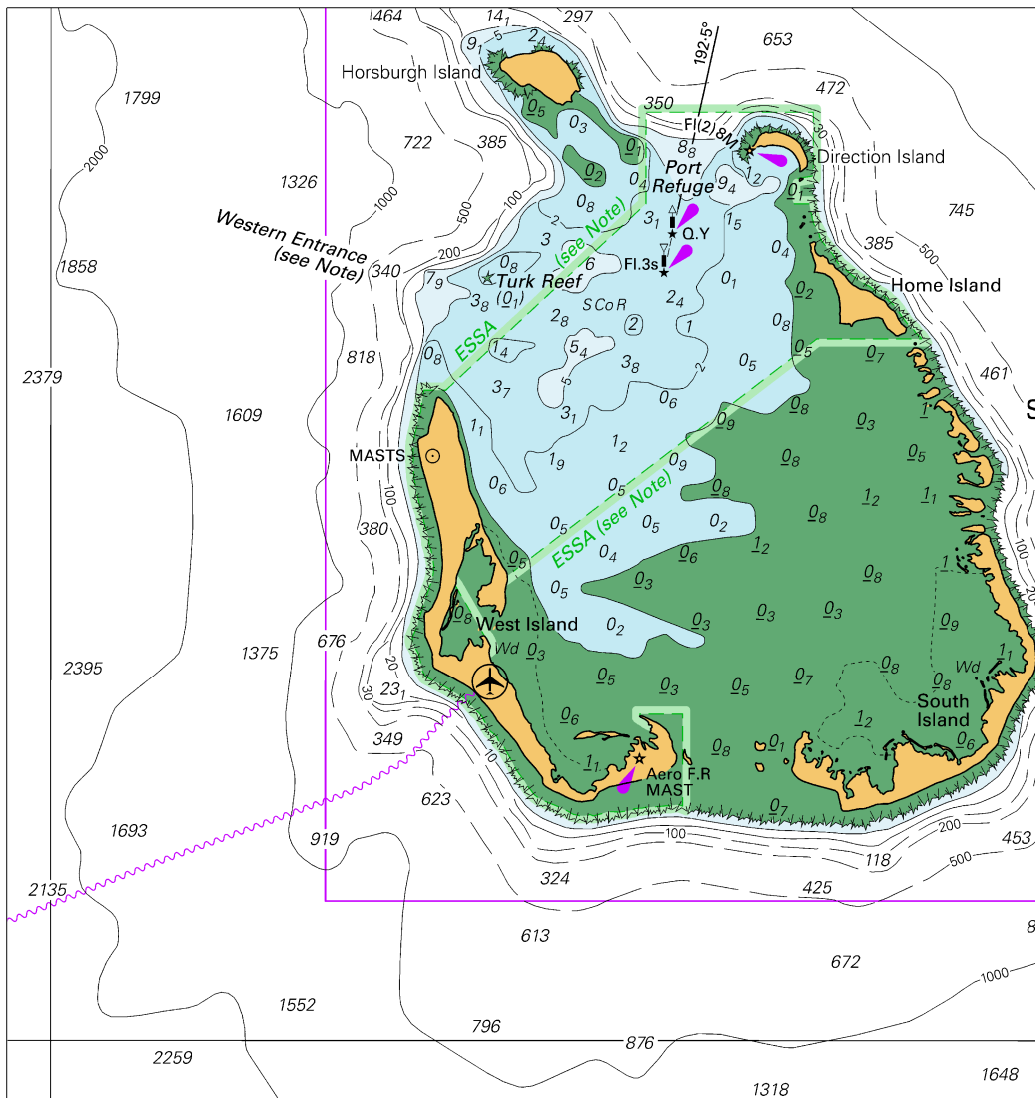


Block A for chart Aus 606

© Commonwealth of Australia 2024

(123.4 x 110.2mm)

To accompany Australian Notice to Mariners 674/2024

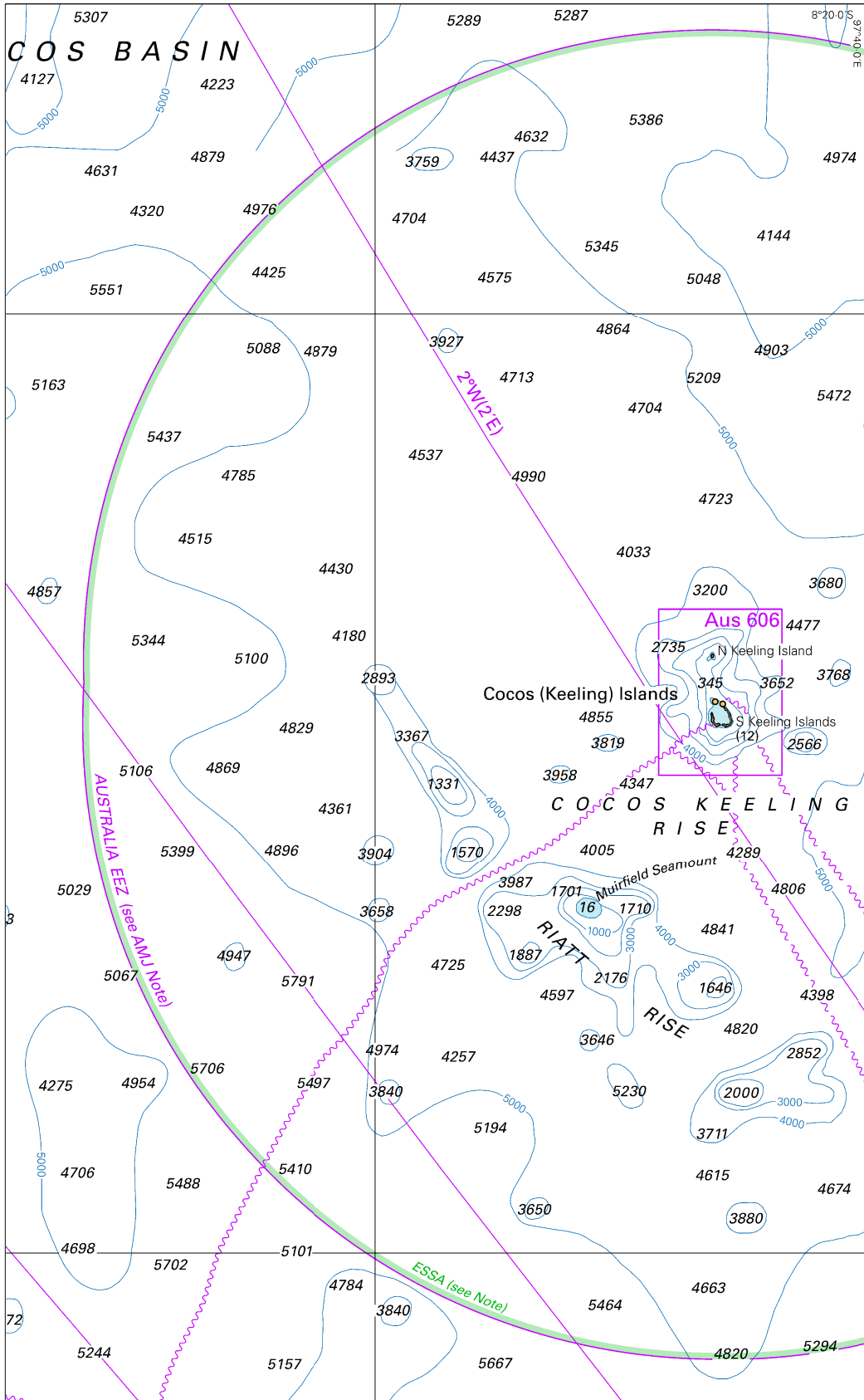


Block B for chart Aus 606

© Commonwealth of Australia 2024

(136.6 x 144.5mm)

To accompany Australian Notice to Mariners 674/2024



Block for chart Aus 4714

© Commonwealth of Australia 2024

(137.3 x 222.7mm)