

*To accompany Australian Notice to Mariners 640/2024*

**OIL AND GAS PIPELINES**

Pipelines carry flammable oil or gas at high pressure. A damaged pipeline could cause an explosion, resulting in damage to a vessel or the environment. Pipelines may pass over bottom undulations, be buried or protrude above the seabed reducing charted depths. Vessels should avoid anchoring, trawling or conducting other underwater operations in the vicinity of the pipelines.

*Note for chart Aus 22*

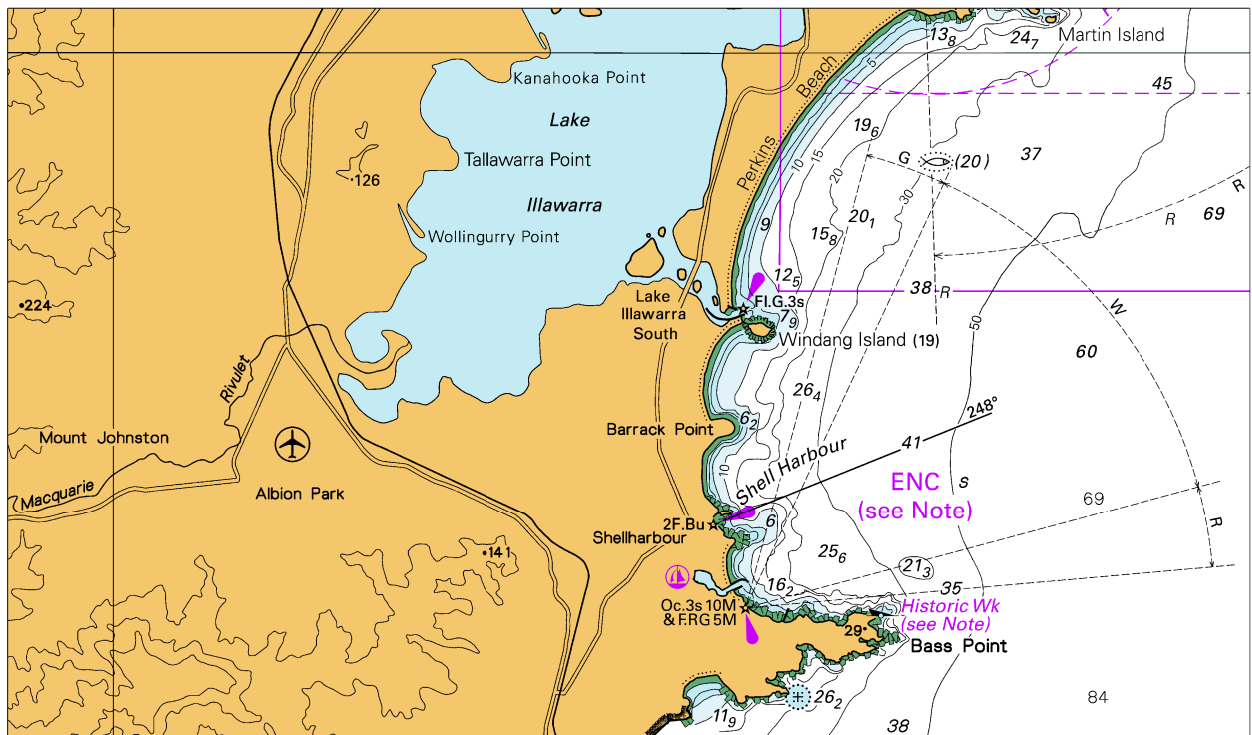
*To accompany Australian Notice to Mariners 640/2024*

**OIL AND GAS PIPELINES**

Pipelines carry flammable oil or gas at high pressure. A damaged pipeline could cause an explosion, resulting in damage to a vessel or the environment. Pipelines may pass over bottom undulations, be buried or protrude above the seabed reducing charted depths. Vessels should avoid anchoring, trawling or conducting other underwater operations in the vicinity of the pipelines.

*Note for chart Aus 310*

To accompany Australian Notice to Mariners 632/2024

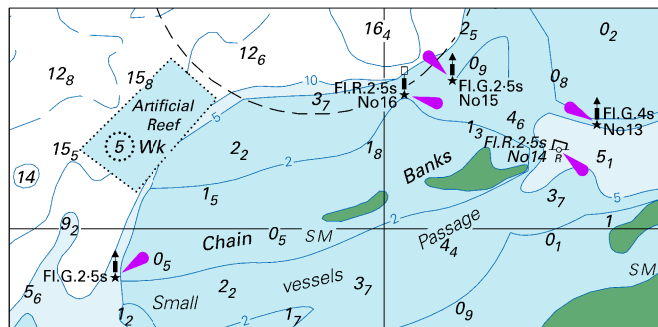


Block for chart Aus 808

© Commonwealth of Australia 2024

(164.2 x 96.1mm)

To accompany Australian Notice to Mariners 636/2024

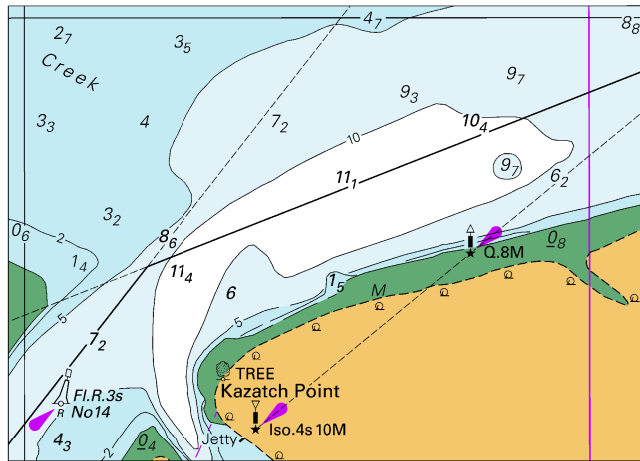


Block for chart Aus 236

(87.0 x 42.0mm)

© Commonwealth of Australia 2024

To accompany Australian Notice to Mariners 637/2024

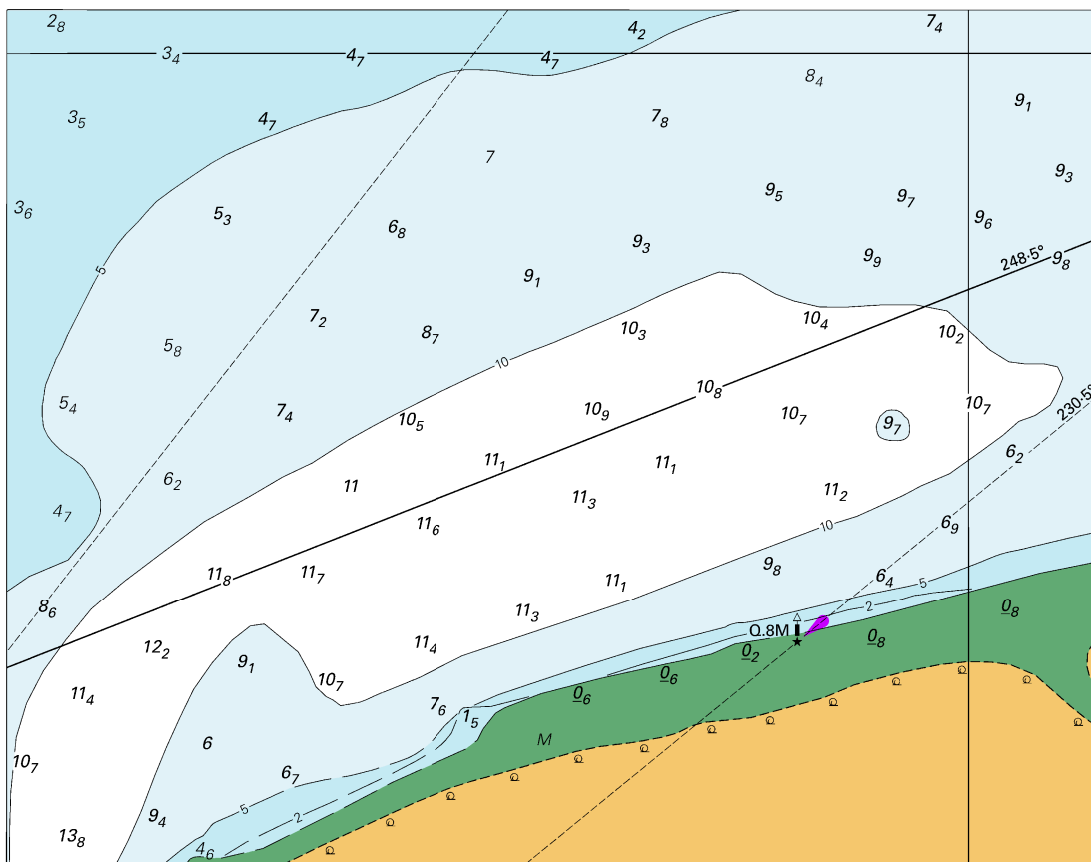


Block A for chart Aus 265

(84.1 x 60.2mm)

© Commonwealth of Australia 2024

To accompany Australian Notice to Mariners 637/2024

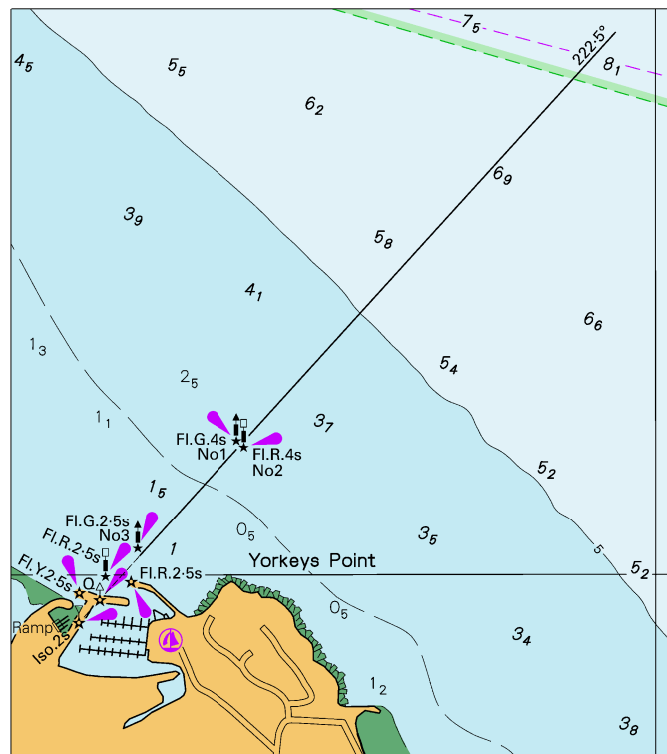


Block B for chart Aus 265

© Commonwealth of Australia 2024

(144.1 x 112.9mm)

To accompany Australian Notice to Mariners 638/2024



Block for chart Aus 262

(87.9 x 98.9mm)

© Commonwealth of Australia 2024