



31 March 2023

Edition 7

AUSTRALIAN NOTICES TO MARINERS

Notices 253 - 301

Published fortnightly by the Australian Hydrographic Office



Australian Notices to Mariners are the authority for correcting charts and publications published by the Australian Hydrographic Office covering Australia, Papua New Guinea, Solomon Islands, Australian Antarctic Territory and Timor-Leste.

Commodore S.T. DUNNE RAN
Hydrographer of Australia

SECTIONS.

- I. Australian Notices to Mariners, including blocks and notes.
- II. Hydrographic Reports.

SUPPLEMENTS.

- I. Tracings
- II. Cumulative List of Australian Notices to Mariners.
- III. Cumulative List of Temporary and Preliminary Australian Notices to Mariners.
- IV. Temporary and Preliminary Notices in force.

© Commonwealth of Australia 2023

This work is copyright. Apart from any use permitted under the Copyright Act 1968, no part may be reproduced by any process, adapted, communicated or commercially exploited without prior written permission from The Commonwealth represented by the Australian Hydrographic Office.

IMPORTANT NOTICE

This edition of Notices to Mariners includes all significant information affecting AHO products which the AHO has become aware of since the last edition. All reasonable efforts have been made to ensure the accuracy and completeness of the information, including third party information, on which these updates are based. The AHO regards third parties from which it receives information as reliable, however the AHO cannot verify all such information and errors may therefore exist. The AHO does not accept liability for errors in third party information.

GENERAL INSTRUCTIONS

The substance of these notices should be inserted on the charts affected.

Bearings are referred to the true compass and are reckoned clockwise from North; those relating to lights are given as seen by an observer from seaward.

Positions quoted in notices relate to WGS84 which is the horizontal datum for all charts produced by the Australian Hydrographic Office.

The range quoted for a light is its nominal range.

Depths are with reference to the chart datum of each chart. Heights are above mean high water springs or mean higher high water, as appropriate.

The capital letter (P) or (T) after the number of any notice denotes a preliminary or temporary notice respectively, which are contained separately at the end of the permanent notices.

REPORTING OF DANGERS

Mariners are particularly requested to notify the AUSTRALIAN HYDROGRAPHIC OFFICE, Locked Bag 8801 Wollongong, NSW 2500 (e-mail datacentre@hydro.gov.au or, alternatively by filling in and submitting the [Hydrographic Notes](#) forms located on the web site – www.hydro.gov.au), immediately on the discovery of new dangers or suspected dangers to navigation. For changes or defects in aids to navigation notify AusSAR (Fax 02-6230 6868 or email rccaus@amsa.gov.au).

AUTHORISED USE

Copies of Australian notices are available free of charge from the Australian Hydrographic Office (AHO) website (www.hydro.gov.au) and through the eNotices (email) service (www.hydro.gov.au/enotices/enotices.htm).

Individual Notices may be copied for the purpose of inserting Notice substance on official charts and publications. Paper copies may be printed by chart agents and distributed to customers on a cost recovery basis. Participating chart agents are listed on the AHO website as providing a 'Paper Notices to Mariners' service (www.hydro.gov.au/webapps/jsp/agents/agents-list.jsp). Copies of the notices may not be sold for profit without prior written agreement.

NUMERICAL INDEX OF NOTICES TO MARINERS

Edition No 7

Notices	Aus Chart, INT Chart, ENC Cell, AHP, BA Pubs
253	Aus 249, 250, 798, 800, PNG 662
254	Aus 839
255	Summer time
256	Aus 198, 808
257	Aus 237
258	Aus 301
259	Aus 316
260	Aus 743, 744
261	Aus 728
262	Aus 337
263	Aus 60
264	Aus 728, 729
265	Aus 53
266	Aus 155
267	Aus 143, 144, 155, 157, 349, 801
268	Aus 487, 767
269(P)	Aus 209
270(T)	Aus 268
271(T)	Aus 268
272(T)	Aus 268
273(T)	Aus 245, 246
274(T)	Aus 249, 250
275(T)	Aus 827, 828
276(T)	Aus 814
277(T)	Aus 256
278(T)	PNG 516, 637
279(T)	PNG 516, 637
280(T)	PNG 684
281(T)	PNG 519, 520
282(T)	PNG 509, 513
283(T)	PNG 515, 516, 637
284(T)	PNG 625
285(T)	PNG 514
286(T)	Aus 299
287(T)	Aus 25, 26, 309
288(T)	Aus 314, 317, 319, 320, 322, 729, 4722, INT 722
289(T)	Aus 37, 40, 41, 50, 314, 317, 319, 320, 322, 323, 324, 325, 326, 728, 729, 730, 732, 733, 4722, INT 722
290(T)	Aus 65, 742
291(T)	Aus 319, 320, 322
292(T)	Aus 57, 59, 327, 742
293(T)	Aus 57, 327
294(T)	Aus 754, 4708, 4709, INT 708, 709
295(T)	Aus 112, 754
296(T)	Aus 746
297(T)	Aus 130
298(T)	Aus 357, 487, 802
299(T)	Aus 143, 155
300(T)	Aus 164
301(T)	Aus 171, 173

NUMERICAL INDEX OF CHARTS AFFECTED

Edition No 7

Aus Chart	Notices
Aus 25	287(T)
Aus 26	287(T)
Aus 37	289(T)
Aus 40	289(T)
Aus 41	289(T)
Aus 50	289(T)
Aus 53	265
Aus 57	292(T), 293(T)
Aus 59	292(T)
Aus 60	263
Aus 65	290(T)
Aus 112	295(T)
Aus 130	297(T)
Aus 143	267, 299(T)
Aus 144	267
Aus 155	266, 267, 299(T)
Aus 157	267
Aus 164	300(T)
Aus 171	301(T)
Aus 173	301(T)
Aus 198	256
Aus 209	269(P)
Aus 237	257
Aus 245	273(T)
Aus 246	273(T)
Aus 249	253, 274(T)
Aus 250	253, 274(T)
Aus 256	277(T)
Aus 268	270(T), 271(T), 272(T)
Aus 299	286(T)
Aus 301	258
Aus 309	287(T)
Aus 314	288(T), 289(T)
Aus 316	259
Aus 317	288(T), 289(T)
Aus 319	288(T), 289(T), 291(T)
Aus 320	288(T), 289(T), 291(T)
Aus 322	288(T), 289(T), 291(T)
Aus 323	289(T)
Aus 324	289(T)
Aus 325	289(T)
Aus 326	289(T)
Aus 327	292(T), 293(T)
Aus 337	262
Aus 349	267
Aus 357	298(T)
Aus 487	268, 298(T)
Aus 728	261, 264, 289(T)
Aus 729	264, 288(T), 289(T)
Aus 730	289(T)
Aus 732	289(T)
Aus 733	289(T)
Aus 742	290(T), 292(T)
Aus 743	260

Aus Chart	Notices
Aus 744	260
Aus 746	296(T)
Aus 754	294(T), 295(T)
Aus 767	268
Aus 798	253
Aus 800	253
Aus 801	267
Aus 802	298(T)
Aus 808	256
Aus 814	276(T)
Aus 827	275(T)
Aus 828	275(T)
Aus 839	254
Aus 4708	294(T)
Aus 4709	294(T)
Aus 4722	288(T), 289(T)
PNG 509	282(T)
PNG 513	282(T)
PNG 514	285(T)
PNG 515	283(T)
PNG 516	278(T), 279(T), 283(T)
PNG 519	281(T)
PNG 520	281(T)
PNG 625	284(T)
PNG 637	278(T), 279(T), 283(T)
PNG 662	253
PNG 684	280(T)

INT Chart	Notices
INT 708	294(T)
INT 709	294(T)
INT 722	288(T), 289(T)

253 AUSTRALIA - Products - New Charts, New Editions, Withdrawn Charts

Australian Hydrographic Office

New Charts

<i>Chart</i>	<i>Title and Geographical limits</i>	<i>Scale</i>	<i>Publication Date</i>	<i>Remarks</i>
NIL				

New Electronic Navigation Chart (Aus ENC)

<i>Cell Name</i>	<i>Title</i>	<i>Publication Date</i>	<i>Remarks</i>
NIL			

New Editions and Withdrawn Charts

<i>Chart</i>	<i>Title</i>	<i>Scale</i>	<i>Publication Date</i>	<i>Remarks</i>
Aus 249 (Edition 7)	Australia - East Coast - Queensland - Approaches to Hay Point and Mackay	1:75 000	31 March 2023	New edition with general updating throughout; including updates to port boundaries. Chart Aus 249 Edition 6 dated 28 June 2019 is now superseded and must be withdrawn from use.
Aus 250 (Edition 7)	Australia - East Coast - Queensland - Plans of Hay Point and Mackay Harbour Plans: Hay Point Mackay Harbour	1:15 000 1:10 000	31 March 2023	New edition with general updating throughout; including updates to port boundaries. Chart Aus 250 Edition 6 dated 14 June 2019 is now superseded and must be withdrawn from use.
Aus 798 (Edition 4)	Australia - Tasmania - Eddystone Point to Stony Head	1:150 000	31 March 2023	New edition with general updating throughout; including new bathymetric data. Chart Aus 798 Edition 3 dated 13 May 2022 is now superseded and must be withdrawn from use.
Aus 800 (Edition 3)	Australia - Tasmania - Furneaux Group	1:150 000	31 March 2023	Limited new edition with general updating throughout; including new bathymetric data. Chart Aus 800 Edition 2 dated 13 May 2022 is now superseded and must be withdrawn from use.
PNG 662 (Edition 2)	Papua New Guinea - Admiralty Islands - Seeadler Harbour Plans: Lombrum Bay Lorengau Bay	1:25 000 1:10 000 1:10 000	31 March 2023	New edition with general updating throughout; including new bathymetric data. Chart PNG 662 Edition 1 dated 13 November 2020 is now superseded and must be withdrawn from use.

253 AUSTRALIA - Products - New Charts, New Editions, Withdrawn Charts**Chart permanently withdrawn**

Charts listed above as withdrawn no longer meet chart carriage requirements and should be marked as "superseded" and replaced with the new chart/ new edition listed prior to passage through the area covered by the new chart.

When placing orders with a chart agent between notice of forthcoming edition and its publication, mariners should advise whether their order pertains to the current edition or the new edition.

For further details refer to the AHO website at www.hydro.gov.au for new edition and new chart stock arrival information.

254 AUSTRALIA - Products - New Charts and New Editions to be published shortly

Australian Hydrographic Office

New Charts to be published shortly

Chart	Title	Scale	Remarks
NIL			

New Editions to be published shortly

Chart	Title	Scale	Remarks
Aus 839	Australia - East Coast - Queensland - Cairncross Islets to Arden Island	1:150 000	New edition with general updating throughout; including new bathymetric data.

255 AUSTRALIA - Summer time

Australian Government

Clocks will be wound back one hour at 0300 local time on 2 APR 2023 in the Australian Capital Territory, New South Wales, South Australia, Victoria and Tasmania.

No changes will be made in Queensland, Northern Territory and Western Australia.

256 AUSTRALIA - NEW SOUTH WALES - Botany Bay - Light

Port Authority of New South Wales

Aus 198 [220/2023]

Amend	legend to 312°	34° 03'.22 S	151° 18'.11 E
-------	----------------	--------------	---------------

Aus 808 [1006/2022]

Amend	legend to 312°	34° 05'.6 S	151° 21'.4 E
-------	----------------	-------------	--------------

257 AUSTRALIA - QUEENSLAND - Brisbane River - Pelican Banks Reach - Light buoy

Maritime Safety Queensland Notice 120(T)/2023

Aus 237 [120/2023]

Amend	light buoy to Q.R	27° 23'.47 S	153° 09'.35 E
-------	-------------------	--------------	---------------

258 AUSTRALIA - QUEENSLAND - Skardon River - Light buoy westwards

Maritime Safety Queensland Notice 116/2023

Aus 301 (Skardon River) [179/2023]

Move	light buoy to	11° 44'.7 S	141° 50'.3 E
		11° 44'.78 S	141° 50'.07 E

259 AUSTRALIA - NORTHERN TERRITORY - Lorna Shoal - Depths

Geoscience Australia

Aus 316 [558/2022]

Insert	accompanying block	12° 27'.5 S	130° 17'.5 E
--------	--------------------	-------------	--------------

260 AUSTRALIA - WESTERN AUSTRALIA - Bessieres Island - Depths
Precision Hydrographic Services

Aus 743 [NE 16/9/2022]			
Replace	depth, 17m, with depth, 15 _g m	21° 29'.2 S	114° 49'.6 E
Aus 744 [1013/2022]			
Replace	depth, 17m, with depth, 15 _g m	21° 29'.2 S	114° 49'.6 E

261 AUSTRALIA - WESTERN AUSTRALIA - Bougainville Peninsula - Wrecks
HMAS Launceston

Aus 728 [1019/2021]			
Insert	depth, 22m, enclosed by danger circle with legend, <i>Wk</i>	13° 46'.30 S	125° 53'.60 E
	depth, 35m, enclosed by danger circle with legend, <i>Wk</i>	13° 55'.22 S	125° 56'.82 E
Delete	depth, 40m	13° 55'.0 S	125° 56'.9 E

262 AUSTRALIA - WESTERN AUSTRALIA - Bremer Bay - Light buoy southwards
Department of Transport WA

Aus 337 [265/2022]			
Insert	special spherical light buoy, <i>Fl(5)Y.20s</i> , without topmark	34° 32'.45 S	119° 29'.77 E

263 AUSTRALIA - WESTERN AUSTRALIA - Dampier - Parker Point - Light beacons
Pilbara Ports Authority

Aus 60 [419/2022]			
Amend	light beacon to <i>F.Bu</i> & <i>Q</i>	20° 38'.33 S	116° 41'.63 E
	light beacon to <i>F.Bu</i> & <i>Q</i>	20° 38'.33 S	116° 41'.80 E

264 AUSTRALIA - WESTERN AUSTRALIA - Montague Sound - Wollaston Island - Rocks; coastline
Australian Hydrographic Office , R Lanaghan and B Withers, SV *Dog on Cat*

Aus 728 [261/2023]			
Insert	accompanying block	14° 29'.8 S	125° 31'.8 E
Aus 729 [1019/2021]			
Insert	accompanying block	14° 29'.8 S	125° 31'.8 E

265 AUSTRALIA - WESTERN AUSTRALIA - Port Hedland - Depths
Precision Hydrographic Services

Aus 53 [126/2023]			
Replace	depth, 14 _g m, and enclosing contour with depth, 15 ₂ m	20° 08'.66 S	118° 29'.68 E

266 AUSTRALIA - VICTORIA - Port Phillip - Mordialloc - Infrastructure; light; coastline
Australian Geospatial-Intelligence Organisation

Aus 155 [482/2022]			
Insert	accompanying block	38° 00'.5 S	145° 04'.9 E

267 AUSTRALIA - VICTORIA - Port Phillip - VTS; chart note

Ports Victoria

Aus 143 [482/2022]

Insert	magenta dashed line, between	38° 05'.00 S	144° 40'.08 E
		38° 05'.00 S	145° 02'.11 E
	accompanying chart note, PRECAUTIONARY AREA	37° 54'.3 S	144° 31'.5 E
	magenta legend, <i>Ports Victoria VTS (Melbourne Sector)</i>	37° 56'.29 S	144° 57'.26 E
	magenta legend, <i>Ports Victoria VTS (Melbourne Sector)</i>	37° 57'.21 S	144° 47'.86 E
	magenta legend, <i>Ports Victoria VTS (Melbourne Sector)</i>	38° 04'.90 S	144° 50'.00 E
	magenta legend, <i>Ports Victoria VTS (Lonsdale Sector)</i>	38° 05'.14 S	144° 50'.00 E
	magenta legend, <i>Ports Victoria VTS (Lonsdale Sector)</i>	38° 16'.82 S	144° 57'.56 E
	accompanying block A	38° 19'.2 S	144° 28'.9 E
	accompanying block B	38° 21'.1 S	144° 41'.4 E

Aus 144 [18/2023]

Insert	magenta dashed line, between	38° 19'.171 S	144° 40'.020 E
		38° 20'.300 S	144° 40'.758 E
	magenta legend, <i>Ports Victoria VTS (Lonsdale Sector)</i>	38° 16'.715 S	144° 41'.472 E
	magenta legend, <i>Ports Victoria VTS (Lonsdale Sector)</i>	38° 17'.587 S	144° 35'.191 E
	magenta legend, <i>Ports Victoria VTS (Lonsdale Sector)</i>	38° 17'.807 S	144° 44'.056 E
	magenta legend, <i>Ports Victoria VTS (Lonsdale Sector)</i>	38° 18'.666 S	144° 42'.163 E
	magenta legend, <i>Ports Victoria VTS (Lonsdale Sector)</i>	38° 19'.533 S	144° 40'.237 E

Aus 155 [266/2023]

Insert	magenta legend, <i>Ports Victoria VTS (Melbourne Sector)</i>	37° 56'.600 S	144° 48'.493 E
	magenta legend, <i>Ports Victoria VTS (Melbourne Sector)</i>	37° 56'.617 S	144° 57'.506 E

Aus 157 [1017/2022]

Insert	magenta dashed line, between	38° 05'.000 S	144° 40'.083 E
		38° 05'.000 S	144° 49'.300 E
	magenta legend, <i>Ports Victoria VTS (Melbourne Sector)</i>	38° 02'.600 S	144° 41'.403 E
	magenta legend, <i>Ports Victoria VTS (Melbourne Sector)</i>	38° 04'.947 S	144° 45'.321 E
	magenta legend, <i>Ports Victoria VTS (Lonsdale Sector)</i>	38° 05'.061 S	144° 45'.321 E
	magenta legend, <i>Ports Victoria VTS (Lonsdale Sector)</i>	38° 05'.792 S	144° 41'.277 E

Aus 349 [NE 17/2/2023]

Insert	accompanying block	38° 21'.2 S	144° 26'.6 E
--------	--------------------	-------------	--------------

Aus 801 [130/2023]

Insert	accompanying block	38° 27'.5 S	144° 37'.0 E
--------	--------------------	-------------	--------------

268 AUSTRALIA - TASMANIA - Banks Strait - Depths

Australian Hydrographic Office

Aus 487 [187/2023]

Insert	accompanying ZOC diagram	38° 26'.0 S	146° 00'.0 E
	accompanying block A	40° 09'.0 S	148° 45'.0 E
	accompanying block B	40° 49'.0 S	148° 45'.0 E

Aus 767 [871/2022]

Insert	accompanying block A	40° 47'.0 S	148° 30'.0 E
	accompanying block B	40° 48'.0 S	148° 44'.0 E

269(P)/2023 AUSTRALIA - NEW SOUTH WALES - Morna Point to Point Stephens - Shoaling

Office of Environment and Heritage NSW

Latest survey indicates shoaler depths than those charted may exist in an area between Morna Point (32° 47'.09 S 152° 07'.44 E) and Point Stephens (32° 44'.91 S 152° 12'.20 E).

Mariners are advised to navigate with caution in the area.

Charts will be updated in due course.

Chart which will be affected - Aus 209

270(T)/2023 AUSTRALIA - QUEENSLAND - Bowen - Port Denison - Light buoy restored

Former Notice - 818(T)/2021 is cancelled

Maritime Safety Queensland

Cancel this notice on receipt.

Chart formerly affected - Aus 268

271(T)/2023 AUSTRALIA - QUEENSLAND - Bowen - Port Denison - Light buoy relit

Former Notice - 697(T)/2021 is cancelled

Maritime Safety Queensland

Cancel this notice on receipt.

Chart formerly affected - Aus 268

272(T)/2023 AUSTRALIA - QUEENSLAND - Bowen - Port Denison - Light buoy restored

Former Notice - 639(T)/2021 is cancelled

Maritime Safety Queensland

Cancel this notice on receipt.

Chart formerly affected - Aus 268

273(T)/2023 AUSTRALIA - QUEENSLAND - Gladstone - South Trees Island - Scientific instrument recovered

Former Notice - 62(T)/2021 is cancelled

Maritime Safety Queensland

Cancel this notice on receipt.

Chart formerly affected - Aus 245 - Aus 246

274(T)/2023 AUSTRALIA - QUEENSLAND - Hay Point - Scientific instrument

Former Notice - 566(T)/2022 is cancelled

Maritime Safety Queensland Notice 121(T)/2023

A special light buoy, *Fl(5)Y.20s*, exists in position 21° 16'.67 S 149° 19'.33 E.

Chart temporarily affected - Aus 249 - Aus 250

275(T)/2023 AUSTRALIA - QUEENSLAND - Orpheus Island - Light buoy off station

Maritime Safety Queensland Notice 109(T)/2023

The black and yellow light buoy, *Fl.Y.2-5s* (18° 34'.35 S 146° 29'.87 E), has been dragged below the surface.

Mariners are advised to keep well clear and to navigate with caution in the area.

Chart temporarily affected - Aus 827 - Aus 828

276(T)/2023 AUSTRALIA - QUEENSLAND - Point Lookout - Light buoy repositioned eastwards*Former Notice* - 889(T)/2021 is cancelled

Maritime Safety Queensland Notice 116/2023

Cancel this notice on receipt.

Chart formerly affected - Aus 814**277(T)/2023 AUSTRALIA - QUEENSLAND - Townsville - Ross River - Wreck; light buoy recovered***Former Notice* - 336(T)/2021 is cancelled

Maritime Safety Queensland

Cancel this notice on receipt.

Chart formerly affected - Aus 256**278(T)/2023 PAPUA NEW GUINEA - Boli Point - Trobriand Islands - Light unlit**

National Maritime Safety Authority PNG

The light, *Fl.G.5s* (08° 33'.77 S 151° 01'.10 E) is unlit.**Chart temporarily affected - PNG 516 - PNG 637****279(T)/2023 PAPUA NEW GUINEA - Bomatu Point - Trobriand Islands - Light unlit**

National Maritime Safety Authority PNG

The light, *Fl(3)15s 31m 10M* (08° 24'.09 S 151° 07'.20 E) is unlit.**Chart temporarily affected - PNG 516 - PNG 637****280(T)/2023 PAPUA NEW GUINEA - Buka Passage - Light unlit**

National Maritime Safety Authority PNG

The light, *Fl.G.6s 8.5m 7M* (05° 25'.10 S 154° 41'.10 E), is unlit.**Chart temporarily affected - PNG 684****281(T)/2023 PAPUA NEW GUINEA - Cape Nelson - Ham Reef - Light unlit**

National Maritime Safety Authority PNG

The light, *Fl.10s 9.3m 10M* (09° 12'.00 S 149° 26'.75 E), is unlit.**Chart temporarily affected - PNG 519 - PNG 520****282(T)/2023 PAPUA NEW GUINEA - Galogalohi (Gallows) Reef - Goschen Strait - Light unlit**

National Maritime Safety Authority PNG

The light, *Fl.5s 7m 10M* (10° 15'.44 S 151° 10'.39 E), is unlit.**Chart temporarily affected - PNG 509 - PNG 513****283(T)/2023 PAPUA NEW GUINEA - Kitava Island - Trobriand Islands - Light unlit**

National Maritime Safety Authority PNG

The light, *Q* (08° 37'.70 S 151° 18'.34 E) is unlit.**Chart temporarily affected - PNG 515 - PNG 516 - PNG 637**

284(T)/2023 PAPUA NEW GUINEA - Kui (Mekinley) Island - China Strait - Light unlit
National Maritime Safety Authority PNG

The light, *Q(9)15s* (10° 33'.21 S 150° 42'.39 E), is unlit.

Chart temporarily affected - PNG 625

285(T)/2023 PAPUA NEW GUINEA - Tamiaris Reef - Laughlan Islands - Light unlit
National Maritime Safety Authority PNG

The light, *Fl(2)8s* (09° 16'.84 S 153° 39'.38 E), is unlit.

Chart temporarily affected - PNG 514

286(T)/2023 AUSTRALIA - TORRES STRAIT - Horn Island - Wasaga - Wreck
Former Notice - 574(T)/2022 is cancelled
Maritime Safety Queensland Notice 311(T)/2022

A wreck marked by a special light buoy, *Fl.Y.2.5s*, exists in position 10° 35'.37 S 142° 14'.65 E.

Mariners are advised to navigate with caution in the area.

Chart temporarily affected - Aus 299

287(T)/2023 AUSTRALIA - NORTHERN TERRITORY - Darwin - Emery Point - Light unlit
Northern Territory Government Notice 26(T)/2023

The light, *Fl(3)WR.15s 19/14M* (12° 27'.23 S 130° 48'.94 E), is unlit.

Chart temporarily affected - Aus 25 - Aus 26 - Aus 309

288(T)/2023 AUSTRALIA - TIMOR SEA - WESTERN AUSTRALIA - Ashmore Reef to Lynher Bank - Survey operations
Blue Ocean Marine Tech Systems

Four AUVs are conducting survey operations in an area bounded by the following positions:

13° 54'.01 S 120° 13'.13 E
15° 15'.67 S 121° 10'.57 E
14° 58'.50 S 123° 56'.73 E
12° 45'.89 S 124° 14'.60 E
12° 17'.78 S 122° 33'.86 E
12° 52'.05 S 122° 33'.83 E.

Mariners are advised to navigate with caution in the area.

Chart temporarily affected - Aus 314 - Aus 317 - Aus 319 - Aus 320 - Aus 322 - Aus 729 - Aus 4722 (INT 722)

289(T)/2023 AUSTRALIA - TIMOR SEA - WESTERN AUSTRALIA - Sahul Banks to Rowley Shoals - Survey operations completed

Former Notice - 993(T)/2022 is cancelled
Blue Ocean Marine Tech Systems

Cancel this notice on receipt.

Chart formerly affected - Aus 37 - Aus 40 - Aus 41 - Aus 50 - Aus 314 - Aus 317 - Aus 319 - Aus 320 - Aus 322 - Aus 323 - Aus 324 - Aus 325 - Aus 326 - Aus 728 - Aus 729 - Aus 730 - Aus 732 - Aus 733 - Aus 4722 (INT 722)

290(T)/2023 AUSTRALIA - WESTERN AUSTRALIA - Barrow Island - Town Point - Light beacon unlit
Chevron Australia Notice 1/2023

The special light beacon, *Mo(U)Y.15s* (20° 49'.09 S 115° 32'.95 E), is unlit.

Chart temporarily affected - Aus 65 - Aus 742

291(T)/2023 AUSTRALIA - WESTERN AUSTRALIA - Browse Island - Scientific instruments westwards
The University of Western Australia

Subsurface scientific instruments, 15m below the surface, exist in the following positions:

14° 03'.15 S 123° 01'.80 E
14° 07'.35 S 122° 49'.02 E
14° 13'.74 S 123° 01'.91 E.

Mariners are advised to navigate with caution in the area.

Chart temporarily affected - Aus 319 - Aus 320 - Aus 322

292(T)/2023 AUSTRALIA - WESTERN AUSTRALIA - Dampier - Scientific instruments

Former Notice - 364(T)/2022 is cancelled

O2 Marine

Special light buoys, *Fl. Y. 4s*, exist in the following positions:

20° 17'.97 S 116° 53'.84 E
20° 21'.20 S 116° 50'.45 E
20° 22'.71 S 116° 47'.52 E
20° 26'.75 S 116° 58'.23 E
20° 26'.77 S 116° 37'.53 E
20° 28'.16 S 116° 42'.27 E
20° 28'.26 S 116° 47'.79 E
20° 29'.50 S 116° 49'.06 E
20° 30'.71 S 116° 47'.13 E
20° 31'.54 S 116° 39'.60 E
20° 32'.17 S 116° 46'.67 E
20° 32'.40 S 116° 41'.06 E
20° 32'.42 S 116° 48'.19 E
20° 32'.46 S 116° 46'.40 E
20° 34'.28 S 116° 46'.79 E
20° 35'.14 S 116° 46'.49 E
20° 37'.32 S 116° 44'.70 E
20° 38'.38 S 116° 44'.14 E
20° 40'.26 S 116° 39'.27 E.

Chart temporarily affected - Aus 57 - Aus 59 - Aus 327 - Aus 742

293(T)/2023 AUSTRALIA - WESTERN AUSTRALIA - Dampier Archipelago - Legendre Island - Scientific instrument northwards

Former Notice - 366(T)/2022 is cancelled

O2 Marine

A scientific instrument exists on the seabed in position 20° 17'.89 S 116° 51'.58 E.

Chart temporarily affected - Aus 57 - Aus 327

294(T)/2023 AUSTRALIA - WESTERN AUSTRALIA - Direction Bank - Subsea operations completed

Former Notice - 951(T)/2022 is cancelled

Blue Ocean Marine Tech Systems

Cancel this notice on receipt.

Chart formerly affected - Aus 754 - Aus 4708 (INT 708) - Aus 4709 (INT 709)

295(T)/2023 AUSTRALIA - WESTERN AUSTRALIA - Fremantle - Scientific instruments recovered

Former Notice - 206(T)/2023 is cancelled

Department of Transport WA

Cancel this notice on receipt.

Chart formerly affected - Aus 112 - Aus 754

296(T)/2023 AUSTRALIA - WESTERN AUSTRALIA - Ningaloo Reef - Scientific instrument recovered

Former Notice - 745(T)/2022 is cancelled
Department of Transport WA

Cancel this notice on receipt.

Chart formerly affected - Aus 746

297(T)/2023 AUSTRALIA - SOUTH AUSTRALIA - Port Adelaide - Dredging operations

Department for Infrastructure and Transport SA Notice 12(T)/2023

The dredge *MODI R* and support vessel *Molly Grace* are conducting dredging operations in the Inner and Outer harbour.

Mariners are advised to navigate with caution in the area.

Chart temporarily affected - Aus 130

298(T)/2023 AUSTRALIA - VICTORIA - Corner Inlet - Scientific instruments eastwards

RPS Group

Subsurface scientific instruments, 20m below the surface, exist in positions 38° 47'.50 S 147° 03'.90 E and 38° 51'.30 S 147° 17'.10 E.

Chart temporarily affected - Aus 357 - Aus 487 - Aus 802

299(T)/2023 AUSTRALIA - VICTORIA - Port Phillip - Half Moon Bay - Light relit

Former Notice - 164(T)/2023 is cancelled
Parks Victoria Notice 143(T)/2023

Cancel this notice on receipt.

Chart formerly affected - Aus 143 - Aus 155

300(T)/2023 AUSTRALIA - TASMANIA - Devonport - Mersey River - Bed levelling completed

Former Notice - 855(T)/2022 is cancelled
Marine and Safety Tasmania Notice M333/2022

Cancel this notice on receipt.

Chart formerly affected - Aus 164

301(T)/2023 AUSTRALIA - TASMANIA - River Derwent - Blackmans Bay - Scientific instrument

Marine and Safety Tasmania Notice M138(T)/2023

A scientific instrument exists on the seabed in position 43° 01'.26 S 147° 20'.34 E.

Mariners are advised to navigate with caution in the area

Chart temporarily affected - Aus 171 - Aus 173

HYDROGRAPHIC REPORTS

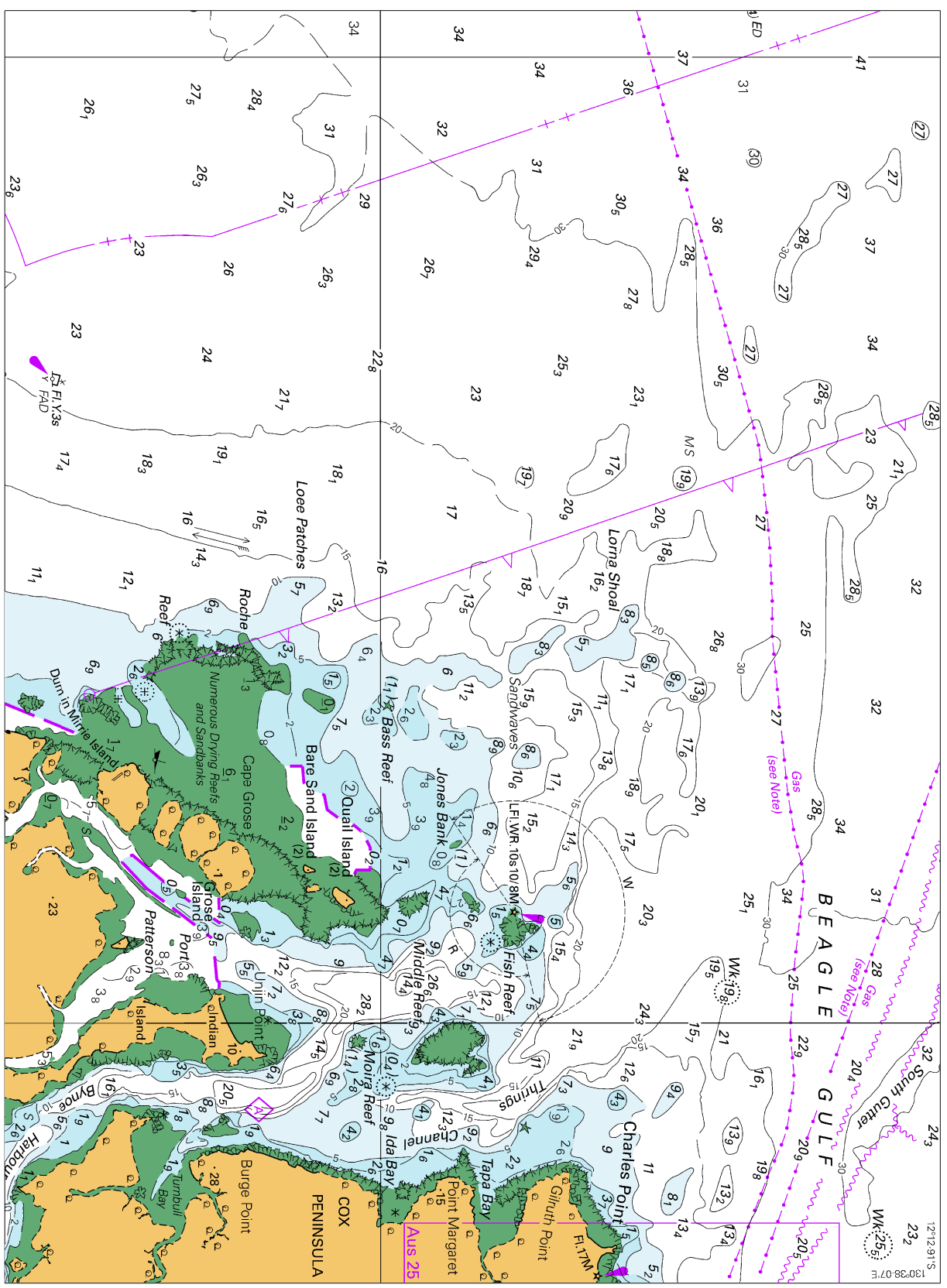
<i>Locality</i>	<i>Report</i>	<i>Ship/Authority</i>	<i>Observer</i>
WA- Montague Sound, Wollaston Island	Rocks	SV <i>Dog on Cat</i>	R Lanaghan and B Withers

To accompany Australian Notice to Mariners 267/2023

PRECAUTIONARY AREA

Traffic within the Precautionary Area consists of vessels manoeuvring on various courses for the purpose of embarking or disembarking Pilots. Vessels should not approach or enter the Precautionary Area unless permitted by Lonsdale Vessel Traffic Service (VTS). Mariners are advised to navigate with caution in the vicinity of the Precautionary Area.

Note for chart Aus 143

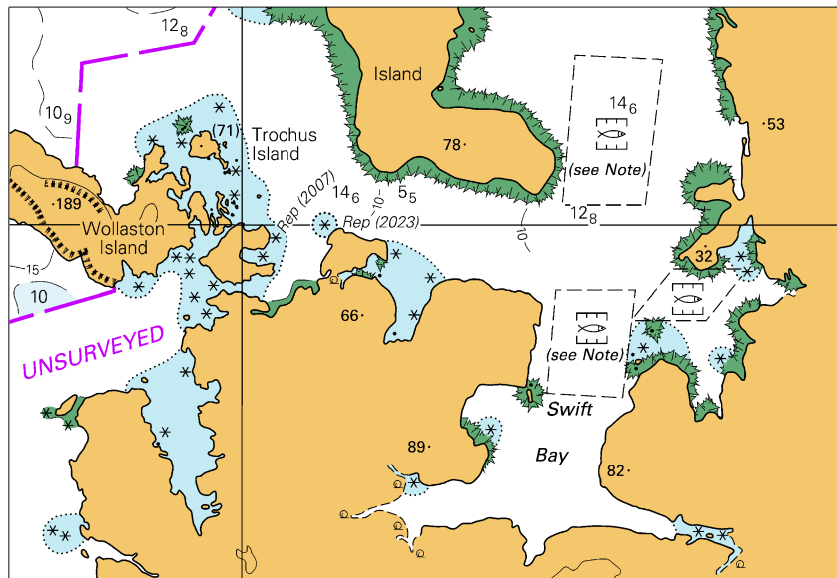


Block for chart Aus 316

© Commonwealth of Australia 2023

(217.4 x 159.8mm)

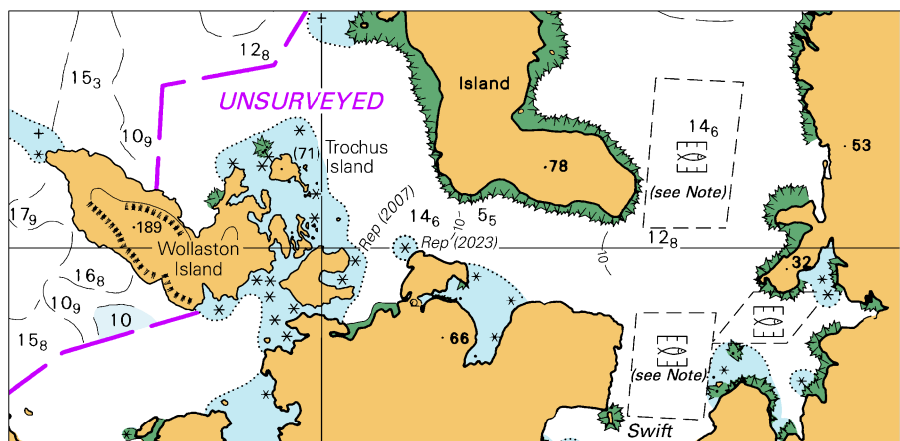
To accompany Australian Notice to Mariners 264/2023



Block for chart Aus 728 © Commonwealth of Australia 2023

(109.7 x 75.6mm)

To accompany Australian Notice to Mariners 264/2023

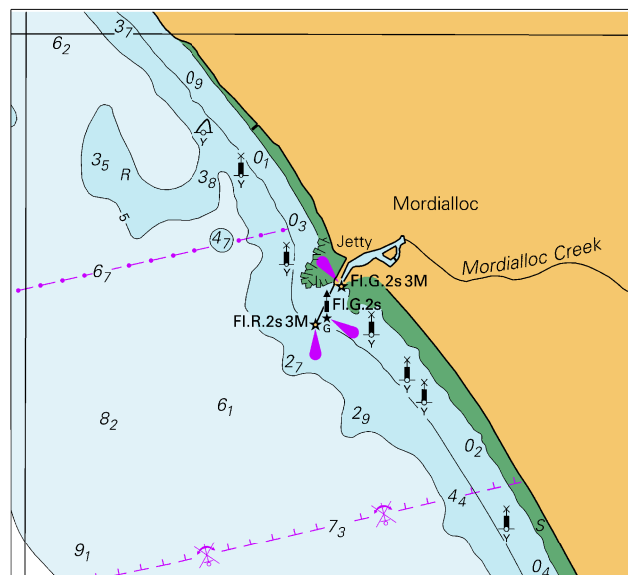


Block for chart Aus 729

© Commonwealth of Australia 2023

(117.8 x 57.1mm)

To accompany Australian Notice to Mariners 266/2023

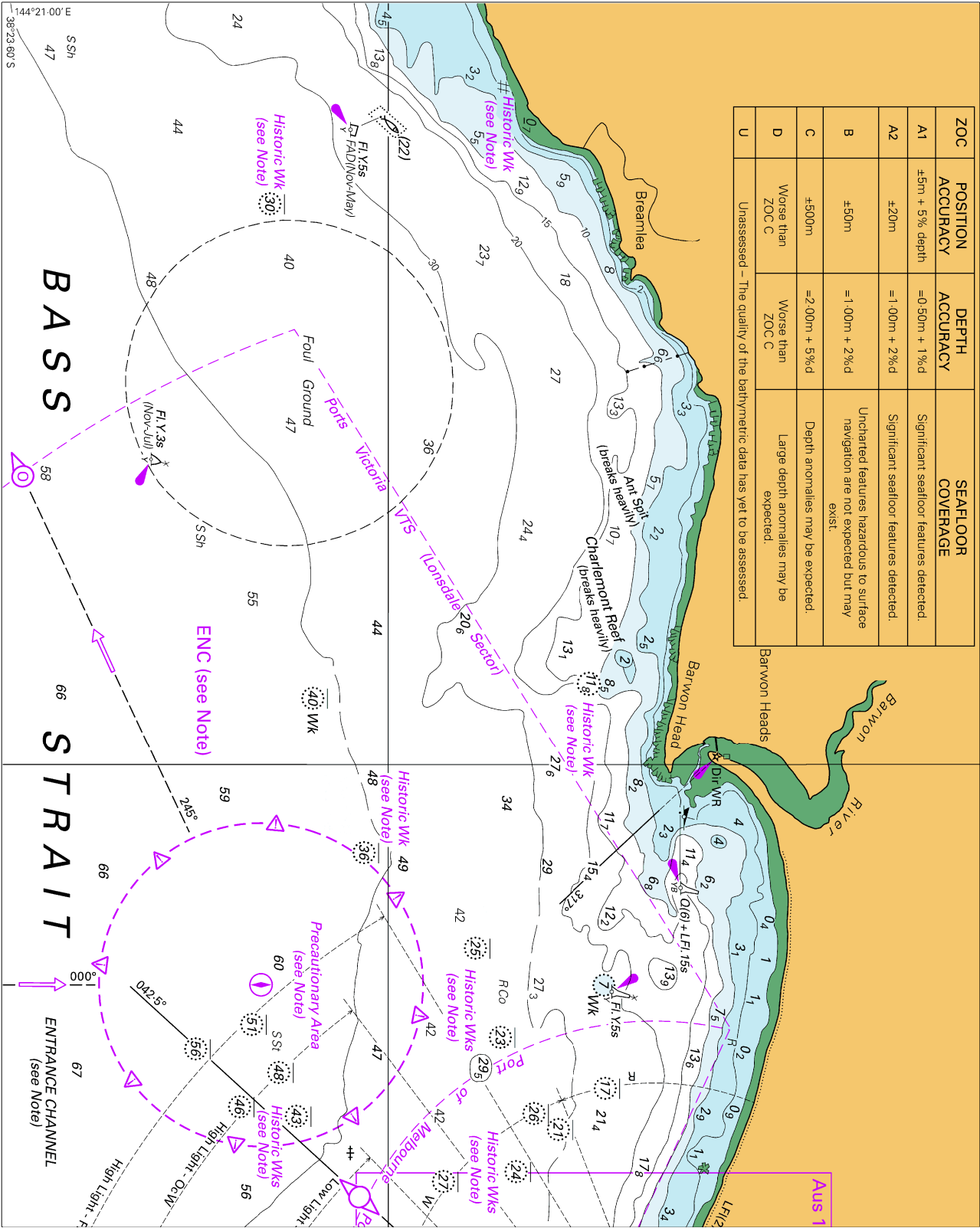


Block for chart Aus 155

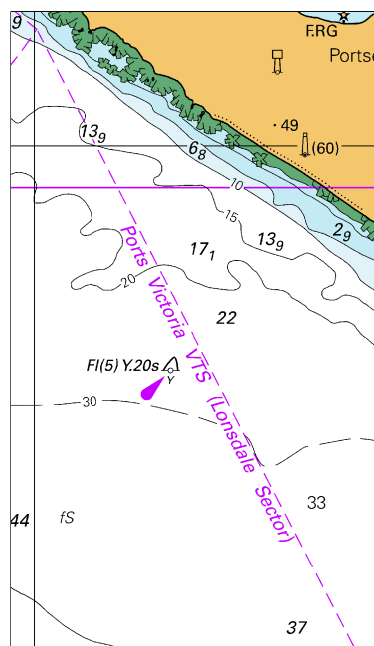
(82.8 x 75.1mm)

© Commonwealth of Australia 2023

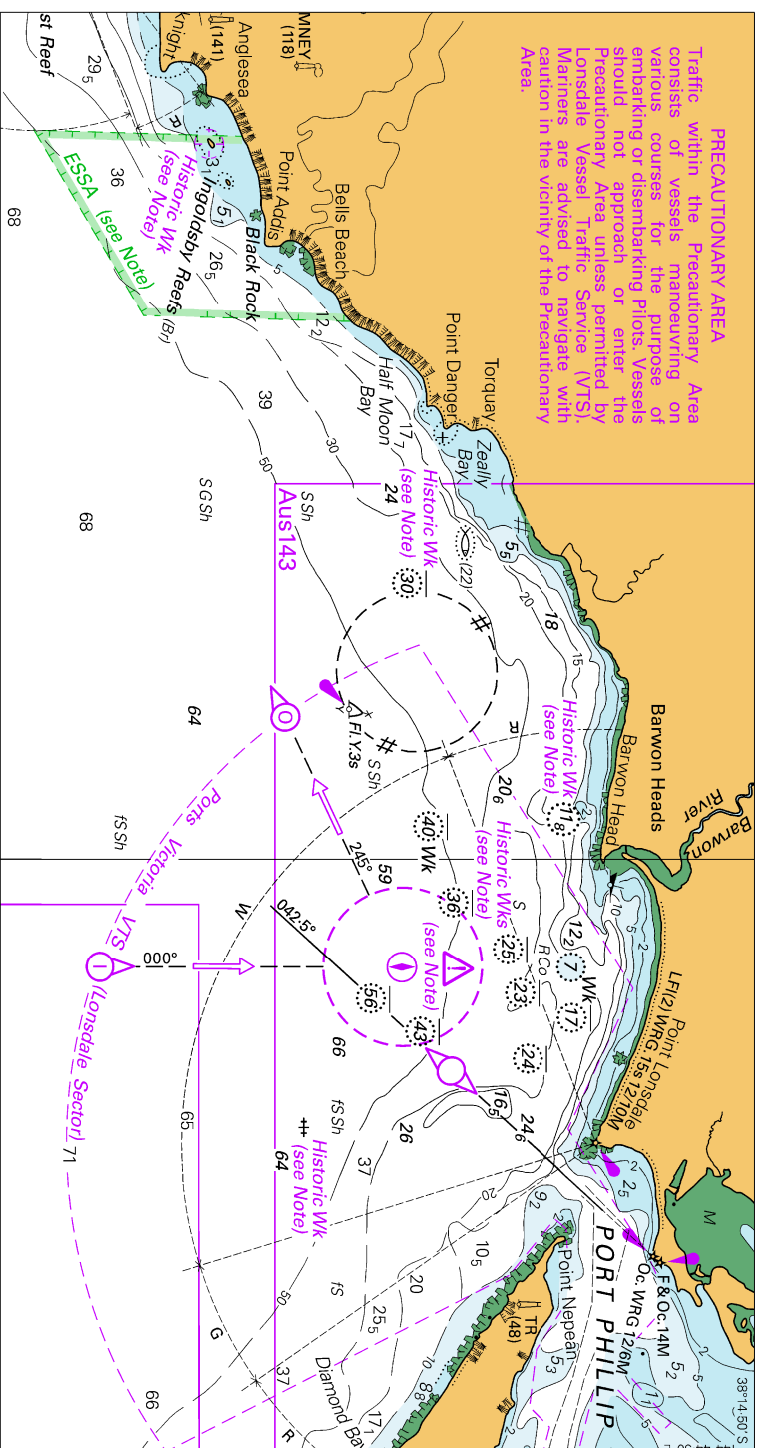
ZOC	POSITION ACCURACY	DEPTH ACCURACY	SEAFLOOR COVERAGE
A1	±5m + 5% depth	±0.50m + 1% d	Significant seafloor features detected.
A2	±20m	±1.00m + 2% d	Significant seafloor features detected.
B	±50m	±1.00m + 2% d	Uncharted features hazardous to surface navigation are not expected but may exist.
C	±500m	±2.00m + 5% d	Depth anomalies may be expected.
D	Worse than ZOC C	Worse than ZOC C	Large depth anomalies may be expected.
U	Unassessed – The quality of the bathymetric data has yet to be assessed.		



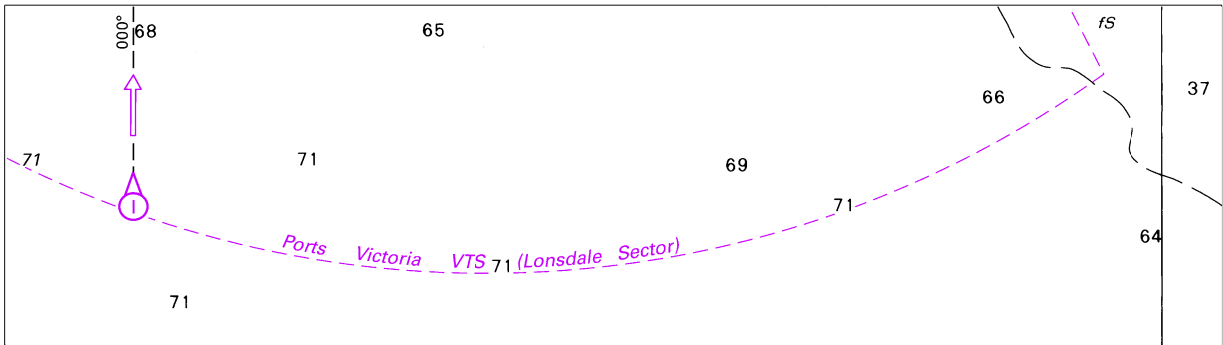
To accompany Australian Notice to Mariners 267/2023



Block B for chart Aus 143 (48.6 x 84.5mm)
© Commonwealth of Australia 2023



To accompany Australian Notice to Mariners 267/2023

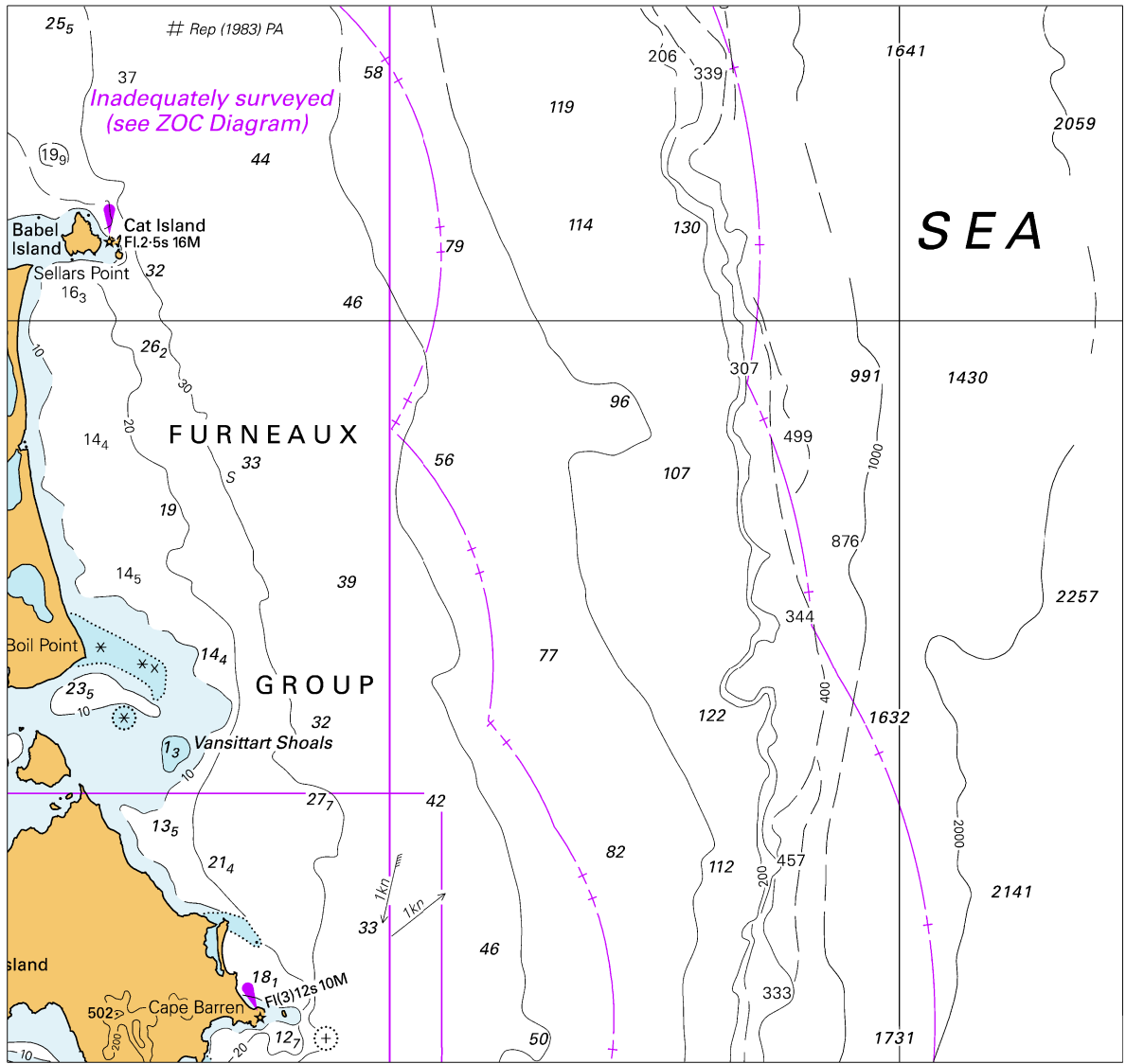


Block for chart Aus 801

© Commonwealth of Australia 2023

(161.0 x 44.8mm)

To accompany Australian Notice to Mariners 268/2023

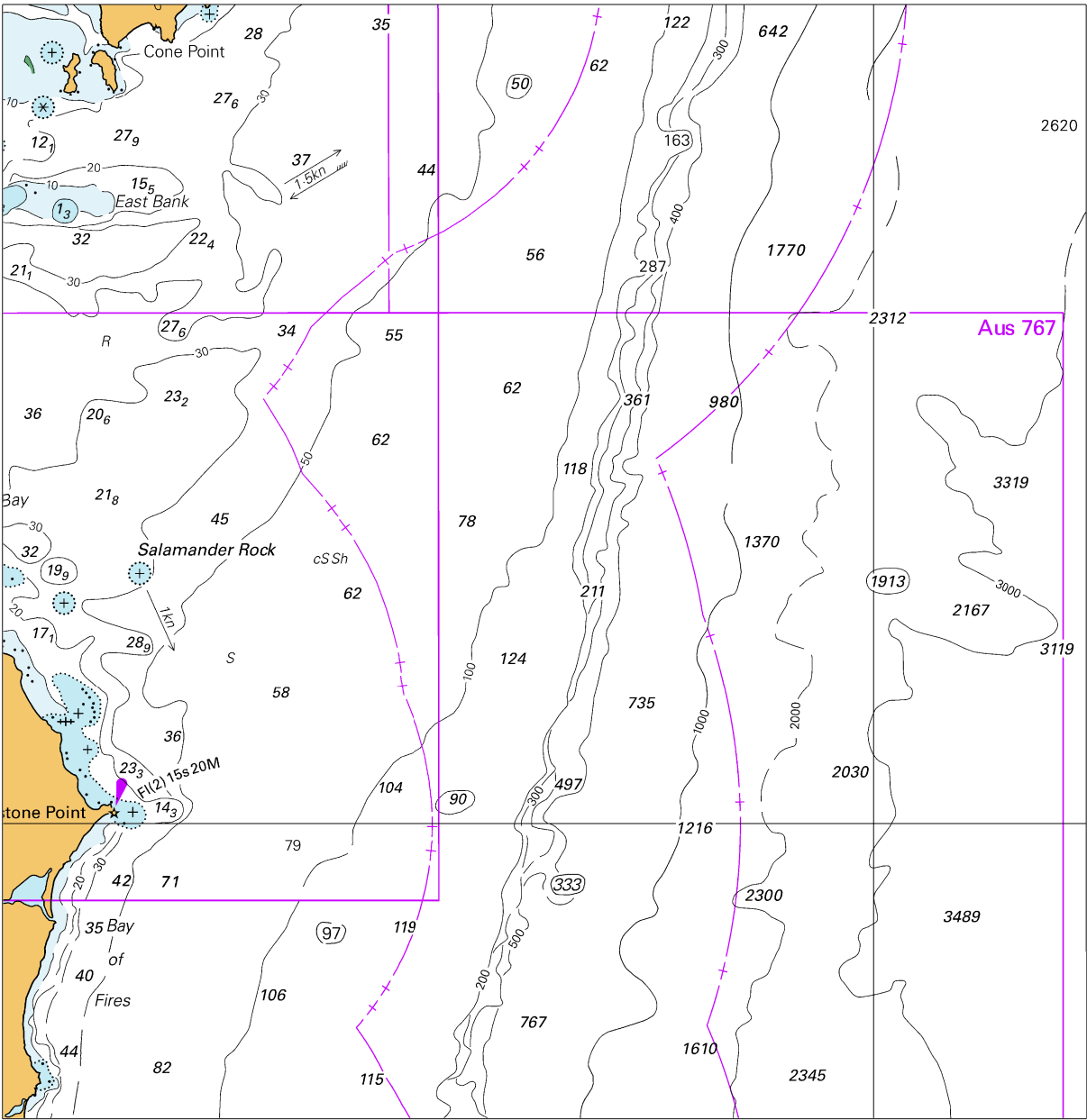


Block A for chart Aus 487

© Commonwealth of Australia 2023

(155.9 x 147.7mm)

To accompany Australian Notice to Mariners 268/2023

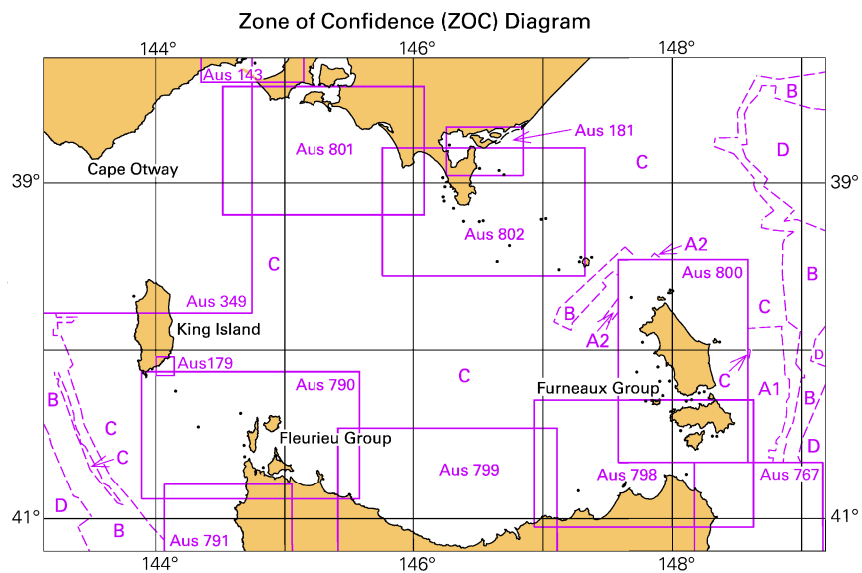


Block B for chart Aus 487

© Commonwealth of Australia 2023

(159.0 x 163.6mm)

To accompany Australian Notice to Mariners 268/2023

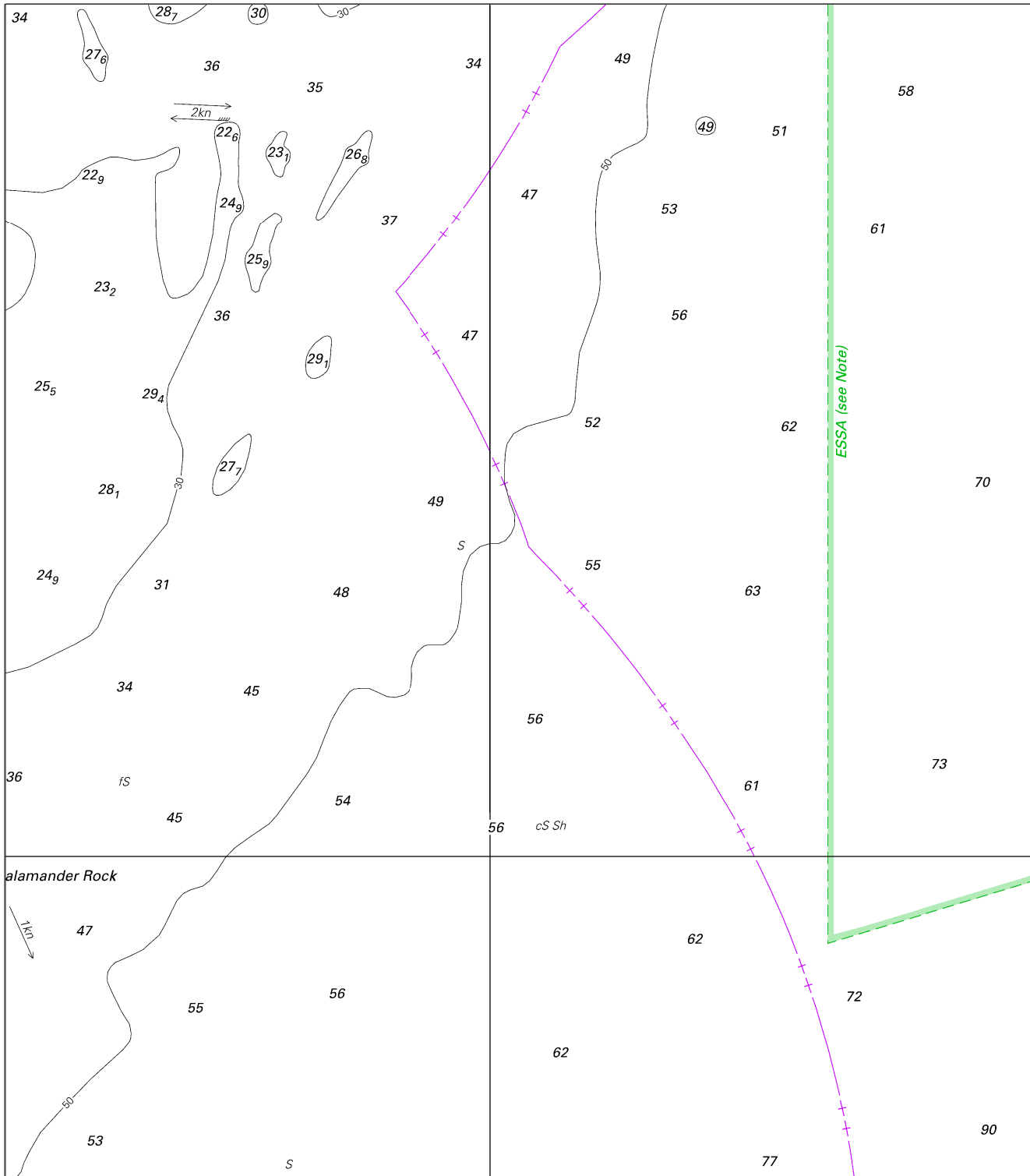


Block for chart Aus 487

© Commonwealth of Australia 2023

(103.5 x 65.4mm)

To accompany Australian Notice to Mariners 268/2023



Block A for chart Aus 767

© Commonwealth of Australia 2023

(174.0 x 199.0mm)

