



3 March 2023

Edition 5

# AUSTRALIAN NOTICES TO MARINERS

**Notices 174 - 216**

Published fortnightly by the Australian Hydrographic Office



Australian Notices to Mariners are the authority for correcting charts and publications published by the Australian Hydrographic Office covering Australia, Papua New Guinea, Solomon Islands, Australian Antarctic Territory and Timor-Leste.

Commodore S.T. DUNNE RAN  
*Hydrographer of Australia*

---

## SECTIONS.

- I. **Australian Notices to Mariners, including blocks and notes.**
- II. **Hydrographic Reports.**

## SUPPLEMENTS.

- I. **Tracings**
- II. **Cumulative List of Australian Notices to Mariners.**
- III. **Cumulative List of Temporary and Preliminary Australian Notices to Mariners.**
- IV. **Temporary and Preliminary Notices in force.**

---

© Commonwealth of Australia 2023

This work is copyright. Apart from any use permitted under the Copyright Act 1968, no part may be reproduced by any process, adapted, communicated or commercially exploited without prior written permission from The Commonwealth represented by the Australian Hydrographic Office.

## IMPORTANT NOTICE

This edition of Notices to Mariners includes all significant information affecting AHO products which the AHO has become aware of since the last edition. All reasonable efforts have been made to ensure the accuracy and completeness of the information, including third party information, on which these updates are based. The AHO regards third parties from which it receives information as reliable, however the AHO cannot verify all such information and errors may therefore exist. The AHO does not accept liability for errors in third party information.

---

## GENERAL INSTRUCTIONS

The substance of these notices should be inserted on the charts affected.

Bearings are referred to the true compass and are reckoned clockwise from North; those relating to lights are given as seen by an observer from seaward.

Positions quoted in notices relate to WGS84 which is the horizontal datum for all charts produced by the Australian Hydrographic Office.

The range quoted for a light is its nominal range.

Depths are with reference to the chart datum of each chart. Heights are above mean high water springs or mean higher high water, as appropriate.

The capital letter (P) or (T) after the number of any notice denotes a preliminary or temporary notice respectively, which are contained separately at the end of the permanent notices.

---

## REPORTING OF DANGERS

Mariners are particularly requested to notify the AUSTRALIAN HYDROGRAPHIC OFFICE, Locked Bag 8801 Wollongong, NSW 2500 (e-mail [datacentre@hydro.gov.au](mailto:datacentre@hydro.gov.au) or, alternatively by filling in and submitting the [Hydrographic Notes](#) forms located on the web site – [www.hydro.gov.au](http://www.hydro.gov.au)), immediately on the discovery of new dangers or suspected dangers to navigation. For changes or defects in aids to navigation notify AusSAR (Fax 02-6230 6868 or email [rccaus@amsa.gov.au](mailto:rccaus@amsa.gov.au)).

---

## AUTHORISED USE

Copies of Australian notices are available free of charge from the Australian Hydrographic Office (AHO) website ([www.hydro.gov.au](http://www.hydro.gov.au)) and through the eNotices (email) service ([www.hydro.gov.au/enotices/enotices.htm](http://www.hydro.gov.au/enotices/enotices.htm)).

Individual Notices may be copied for the purpose of inserting Notice substance on official charts and publications. Paper copies may be printed by chart agents and distributed to customers on a cost recovery basis. Participating chart agents are listed on the AHO website as providing a 'Paper Notices to Mariners' service ([www.hydro.gov.au/webapps/jsp/agents/agents-list.jsp](http://www.hydro.gov.au/webapps/jsp/agents/agents-list.jsp)). Copies of the notices may not be sold for profit without prior written agreement.

## NUMERICAL INDEX OF NOTICES TO MARINERS

### Edition No 5

Notices	Aus Chart, INT Chart, ENC Cell, AHP, BA Pubs
<a href="#">174</a>	Aus 242, 309, PNG 621
<a href="#">175</a>	Aus 798, 800
<a href="#">176</a>	Amendment to Mariner's Handbook for Australian Waters AHP20
<a href="#">177</a>	Aus 236
<a href="#">178</a>	Aus 292
<a href="#">179</a>	Aus 301, 700
<a href="#">180</a>	Aus 720
<a href="#">181</a>	Aus 14
<a href="#">182</a>	Aus 903
<a href="#">183</a>	Aus 327
<a href="#">184</a>	Aus 117
<a href="#">185</a>	Aus 64
<a href="#">186</a>	Aus 347, 348, 4709, INT 709
<a href="#">187</a>	Aus 487, 802
<a href="#">188</a>	Aus 798
<a href="#">189</a>	Aus 164, 799
<a href="#">190</a>	SLB 107
<a href="#">191(T)</a>	Aus 222
<a href="#">192(T)</a>	Aus 489, 807, 808, 4601, INT 601
<a href="#">193(T)</a>	Aus 807
<a href="#">194(T)</a>	Aus 489, 806, 807, 808, 4601, INT 601
<a href="#">195(T)</a>	Aus 256, 827
<a href="#">196(T)</a>	Aus 815, 817
<a href="#">197(T)</a>	Aus 6
<a href="#">198(T)</a>	Aus 250
<a href="#">199(T)</a>	Aus 248, 260, 367, 820, 822
<a href="#">200(T)</a>	Aus 248, 260, 367, 820, 822
<a href="#">201(T)</a>	Aus 256
<a href="#">202(T)</a>	Aus 22, 309, 310
<a href="#">203(T)</a>	Aus 25
<a href="#">204(T)</a>	Aus 57, 60
<a href="#">205(T)</a>	Aus 57
<a href="#">206(T)</a>	Aus 112, 754
<a href="#">207(T)</a>	Aus 116, 755
<a href="#">208(T)</a>	Aus 328, 329
<a href="#">209(T)</a>	Aus 328, 329, 744
<a href="#">210(T)</a>	Aus 64
<a href="#">211(T)</a>	Aus 118
<a href="#">212(T)</a>	Aus 777
<a href="#">213(T)</a>	Aus 777
<a href="#">214(T)</a>	Aus 136
<a href="#">215(T)</a>	Aus 143
<a href="#">216(T)</a>	Aus 163

## NUMERICAL INDEX OF CHARTS AFFECTED

### Edition No 5

Aus Chart	Notices
Aus 6	<a href="#">197(T)</a>
Aus 14	<a href="#">181</a>
Aus 22	<a href="#">202(T)</a>
Aus 25	<a href="#">203(T)</a>
Aus 57	<a href="#">204(T), 205(T)</a>
Aus 60	<a href="#">204(T)</a>
Aus 64	<a href="#">185, 210(T)</a>
Aus 112	<a href="#">206(T)</a>
Aus 116	<a href="#">207(T)</a>
Aus 117	<a href="#">184</a>
Aus 118	<a href="#">211(T)</a>
Aus 136	<a href="#">214(T)</a>
Aus 143	<a href="#">215(T)</a>
Aus 163	<a href="#">216(T)</a>
Aus 164	<a href="#">189</a>
Aus 222	<a href="#">191(T)</a>
Aus 236	<a href="#">177</a>
Aus 242	<a href="#">174</a>
Aus 248	<a href="#">199(T), 200(T)</a>
Aus 250	<a href="#">198(T)</a>
Aus 256	<a href="#">195(T), 201(T)</a>
Aus 260	<a href="#">199(T), 200(T)</a>
Aus 292	<a href="#">178</a>
Aus 301	<a href="#">179</a>
Aus 309	<a href="#">174, 202(T)</a>
Aus 310	<a href="#">202(T)</a>
Aus 327	<a href="#">183</a>
Aus 328	<a href="#">208(T), 209(T)</a>
Aus 329	<a href="#">208(T), 209(T)</a>
Aus 347	<a href="#">186</a>
Aus 348	<a href="#">186</a>
Aus 367	<a href="#">199(T), 200(T)</a>
Aus 487	<a href="#">187</a>
Aus 489	<a href="#">192(T), 194(T)</a>
Aus 700	<a href="#">179</a>
Aus 720	<a href="#">180</a>
Aus 744	<a href="#">209(T)</a>
Aus 754	<a href="#">206(T)</a>
Aus 755	<a href="#">207(T)</a>
Aus 777	<a href="#">212(T), 213(T)</a>
Aus 798	<a href="#">175, 188</a>
Aus 799	<a href="#">189</a>
Aus 800	<a href="#">175</a>
Aus 802	<a href="#">187</a>
Aus 806	<a href="#">194(T)</a>
Aus 807	<a href="#">192(T), 193(T), 194(T)</a>
Aus 808	<a href="#">192(T), 194(T)</a>
Aus 815	<a href="#">196(T)</a>
Aus 817	<a href="#">196(T)</a>
Aus 820	<a href="#">199(T), 200(T)</a>
Aus 822	<a href="#">199(T), 200(T)</a>
Aus 827	<a href="#">195(T)</a>
Aus 903	<a href="#">182</a>
Aus 4601	<a href="#">192(T), 194(T)</a>

Aus Chart	Notices
Aus 4709	<a href="#">186</a>
PNG 621	<a href="#">174</a>
SLB 107	<a href="#">190</a>

INT Chart	Notices
INT 601	<a href="#">192(T), 194(T)</a>
INT 709	<a href="#">186</a>

**174 AUSTRALIA - Products - New Charts, New Editions, Withdrawn Charts**

Australian Hydrographic Office

**New Charts**

<i>Chart</i>	<i>Title and Geographical limits</i>	<i>Scale</i>	<i>Publication Date</i>	<i>Remarks</i>
NIL				

**New Electronic Navigation Chart (Aus ENC)**

<i>Cell Name</i>	<i>Title</i>	<i>Publication Date</i>	<i>Remarks</i>
AU309125	Timor Leste - North Coast - Approaches to Dili	23 February 2023	
AU309126	Timor Leste - North Coast - Cell 8	23 February 2023	
AU50EC01	Timor Leste - North Coast - Pante Makasar	23 February 2023	

**New Editions and Withdrawn Charts**

<i>Chart</i>	<i>Title</i>	<i>Scale</i>	<i>Publication Date</i>	<i>Remarks</i>
Aus 242 (Edition 6)	Australia - East Coast - Queensland - Port Bundaberg	1:7 500	3 March 2023	Limited new edition with general updating throughout; including new bathymetric data and the removal of insets Burnett River (Northern Section) and Burnett River (Southern Section). <b>Chart Aus 242 Edition 5 dated 10 February 2017 is now superseded and must be withdrawn from use.</b>
Aus 309 (Edition 4)	Australia - North Coast - Darwin to Penguin Shoal (Eastern Sheet)	1:300 000	3 March 2023	Limited new edition with general updating throughout; including latest bathymetric data. <b>Chart Aus 309 Edition 3 dated 24 June 2022 is now superseded and must be withdrawn from use.</b>
PNG 621 (Edition 2)	Papua New Guinea - South Coast - Approaches to Port Moresby	1:37 500	3 March 2023	Limited new edition with general updating throughout; including new bathymetric data over Nadeara Reef. <b>Chart PNG 621 Edition 1 dated 12 June 2020 is now superseded and must be withdrawn from use.</b>

**Chart permanently withdrawn**

Charts listed above as withdrawn no longer meet chart carriage requirements and should be marked as "superseded" and replaced with the new chart/ new edition listed prior to passage through the area covered by the new chart.

When placing orders with a chart agent between notice of forthcoming edition and its publication, mariners should advise whether their order pertains to the current edition or the new edition.

For further details refer to the AHO website at [www.hydro.gov.au](http://www.hydro.gov.au) for new edition and new chart stock arrival information.

**175 AUSTRALIA - Products - New Charts and New Editions to be published shortly**

Australian Hydrographic Office

**New Charts to be published shortly**

Chart	Title	Scale	Remarks
NIL			

**New Editions to be published shortly**

Chart	Title	Scale	Remarks
Aus 798	Australia - Tasmania - Eddystone Point to Stony Head	1:150 000	Limited new edition with general updating throughout; including new bathymetric data.
Aus 800	Australia - Tasmania - Furneaux Group	1:150 000	Limited new edition with general updating throughout; including new bathymetric data.

**176 AUSTRALIA - Product - Amendment to Mariner's Handbook for Australian Waters AHP20**

Maritime Safety Queensland

Chapter 9.3.4 - Para 4 Immarsat C Messaging - Page 172

*Replace* paragraph with accompanying block

Chapter 9.3.5 - REEF VTS AREA - Page 173

*Replace* image with accompanying block**177 AUSTRALIA - QUEENSLAND - Moreton Bay - Deception Bay - Light beacons**

Maritime Safety Queensland Notice 48/2023, 49/2023

**Aus 236 [89/2023]**

Insert	accompanying block	27° 11'.4 S	153° 05'.7 E
--------	--------------------	-------------	--------------

**178 AUSTRALIA - TORRES STRAIT - Ackers Shoal - Contour northeastwards**

Department of Defence

**Aus 292 [123/2023]**

Insert	accompanying block	10° 17'.5 S	142° 49'.7 E
--------	--------------------	-------------	--------------

**179 AUSTRALIA - TORRES STRAIT - Larpent Bank - Depths**

Australian Hydrographic Office

**Aus 301 [437/2022]**

Insert	accompanying block	10° 37'.0 S	142° 00'.0 E
--------	--------------------	-------------	--------------

**Aus 700 [123/2023]**

Insert	contour, between	10° 37'.99 S	142° 00'.21 E
		10° 38'.22 S	142° 00'.58 E
		10° 37'.84 S	142° 00'.59 E

Delete	contour, between	10° 38'.0 S	142° 00'.2 E
		10° 37'.8 S	142° 00'.6 E

**180 AUSTRALIA - NORTHERN TERRITORY - Clarence Strait - Depths**

Australian Hydrographic Office

**Aus 720 [NE 25/11/2022]**

Insert	accompanying block	12° 00'.0 S	131° 12'.5 E
--------	--------------------	-------------	--------------

**181 AUSTRALIA - NORTHERN TERRITORY - Groote Eylandt - Milner Bay - Infrastructure**

Australian Geospatial-Intelligence Organisation

**Aus 14 [650/2022]**

Insert	accompanying block A	13° 50'.8 S	136° 25'.0 E
--------	----------------------	-------------	--------------

**Aus 14 (Milner Bay) [650/2022]**

Insert	accompanying block B	13° 51'.6 S	136° 25'.2 E
--------	----------------------	-------------	--------------

**182 TIMOR-LESTE - Betona (Betano) - Wreck**

Australian Hydrographic Office

**Aus 903 (Betona (Betano)) [NE 14/7/2017]**

Delete	wreck	9° 10'.07 S	125° 43'.58 E
--------	-------	-------------	---------------

**183 AUSTRALIA - WESTERN AUSTRALIA - Dampier Archipelago - Wells northwestwards**

Woodside Energy Ltd

**Aus 327 [15/2023]**

Insert	danger circle with legend, <i>Well</i> , centred on	19° 42'.60 S	115° 53'.24 E
	danger circle with legend, <i>Well</i> , centred on	19° 43'.08 S	115° 51'.98 E

**184 AUSTRALIA - WESTERN AUSTRALIA - Fremantle - Catherine Point - Marine farm**

Department of Transport WA Notice 5569/2023

**Aus 117 [11/2023]**

Insert	dashed line and marine farm symbol with legend, ( <i>see Note</i> ), between	32° 05'.819 S	115° 45'.271 E
		32° 05'.782 S	115° 45'.420 E
		32° 05'.141 S	115° 45'.171 E
		32° 05'.193 S	115° 45'.007 E
		32° 05'.819 S	115° 45'.271 E
	special spar light buoy, <i>Fl.Y.3s</i> , without topmark	32° 05'.193 S	115° 45'.007 E
	special spar light buoy, <i>Fl.Y.3s</i> , without topmark	32° 05'.819 S	115° 45'.271 E

**185 AUSTRALIA - WESTERN AUSTRALIA - Thevenard Island - Foul ground northeastwards**

Chevron Australia

**Aus 64 [1015/2022]**

Insert	#, centred on	21° 24'.82 S	115° 02'.38 E
--------	---------------	--------------	---------------

**186 AUSTRALIA - SOUTH AUSTRALIA - Cape Martin - Depth**HMAS *Melville***Aus 347 [96/2023]**

Delete	depth, 24 <sub>1</sub> m, and enclosing contour	37° 23'.4 S	139° 40'.8 E
--------	---	-------------	--------------

**Aus 348 [941/2021]**

Delete	depth, 24 <sub>1</sub> m, and enclosing contour	37° 23'.4 S	139° 40'.8 E
--------	---	-------------	--------------

**Aus 4709 (INT 709) [59/2023]**

Insert	contour, between	37° 18'.6 S	139° 43'.1 E
		37° 21'.5 S	139° 43'.6 E
		37° 22'.8 S	139° 47'.2 E
Delete	contour, between	37° 18'.6 S	139° 43'.1 E
		37° 22'.8 S	139° 47'.2 E
	depth, 24 <sub>1</sub> m	37° 23'.4 S	139° 40'.8 E

**187 AUSTRALIA - BASS STRAIT - Kent Group - North East Isle - Light**

Australian Maritime Safety Authority Final ATH 7/2023

**Aus 487 [NE 17/2/2023]**

Amend	light range to 15M	39° 26'.6 S	147° 22'.7 E
-------	--------------------	-------------	--------------

**Aus 802 [128/2023]**

Amend	light range to 15M	39° 26'.6 S	147° 22'.7 E
-------	--------------------	-------------	--------------

**188 AUSTRALIA - TASMANIA - Eddystone Point to Stony Head - ZOC diagram**

Australian Hydrographic Office

*On certain copies only***Erratum:** Australian Notice to Mariners number 130/2023 published a block for Aus 798 at an incorrect size.**Aus 798 [130/2023]**

Insert	accompanying ZOC diagram	40° 56'.5 S	147° 46'.0 E
--------	--------------------------	-------------	--------------

**189 AUSTRALIA - TASMANIA - Port Fenton - Artificial reef***Former Notice - 408(T)/2022 is cancelled*

MMA Offshore

**Aus 164 [129/2023]**

Insert	fish haven with minimum depth, 12m, centred on	41° 07'.397 S	146° 13'.295 E
--------	--	---------------	----------------

**Aus 799 [130/2023]**

Insert	out of position fish haven with minimum depth, 12m, centred on	41° 07'.40 S	146° 13'.30 E
--------	--	--------------	---------------

**190 SOLOMON ISLANDS - Pallu Passage to Ndende Island - Beacons**

Department of Defence

**SLB 107 (Manieve and Tevai Bays) [724/2022]**

Insert	beacon with starboard lateral topmark	11° 39'.70 S	166° 56'.90 E
	beacon with port lateral topmark	11° 39'.75 S	166° 57'.01 E

Delete	depth, 2m	11° 39'.8 S	166° 57'.0 E
--------	-----------	-------------	--------------

**SLB 107 (Pallu Passage) [724/2022]**

Insert	beacon with port lateral topmark	11° 42'.59 S	166° 49'.91 E
--------	----------------------------------	--------------	---------------

**SLB 107 (Graciosa Bay) [724/2022]**

Insert	beacon with port lateral topmark	10° 42'.33 S	165° 48'.22 E
--------	----------------------------------	--------------	---------------



**191(T)/2023 AUSTRALIA - NEW SOUTH WALES - Clarence River - Light removed**

*Former Notice* - 591(T)/2021 is cancelled  
Port Authority of New South Wales

Cancel this notice on receipt.

**Chart formerly affected - Aus 222****192(T)/2023 AUSTRALIA - NEW SOUTH WALES - Jervis Bay - Military exercise**

Australian Maritime Safety Authority

During the period 13 to 31 March 2023, a military exercise involving the use of AUVs and ASVs will be conducted in an area bounded by the following positions:

35° 10'.8 S 150° 35'.4 E

35° 50'.4 S 150° 40'.2 E

35° 44'.4 S 151° 03'.0 E

35° 30'.0 S 151° 19'.2 E

35° 14'.4 S 151° 28'.2 E

34° 57'.0 S 151° 38'.4 E

34° 57'.0 S 150° 49'.2 E.

Mariners are advised to navigate with caution and keep well clear of the area.

**Chart temporarily affected - Aus 489 - Aus 807 - Aus 808 - Aus 4601 (INT 601)****193(T)/2023 AUSTRALIA - NEW SOUTH WALES - Ulladulla - Wreck northeastwards**

Transport for NSW

A wreck exists in position 35° 19'.08 S 150° 35'.44 E.

**Chart temporarily affected - Aus 807****194(T)/2023 AUSTRALIA - TASMAN SEA - Live firing**

Department of Defence 816 Squadron

During the period 6 to 16 March 2023, live firing will be conducted in an area bounded by the following positions:

36° 17'.4 S 150° 40'.3 E

35° 23'.7 S 152° 03'.4 E

35° 04'.8 S 150° 58'.2 E

35° 14'.4 S 150° 33'.7 E.

**Chart temporarily affected - Aus 489 - Aus 806 - Aus 807 - Aus 808 - Aus 4601 (INT 601)****195(T)/2023 AUSTRALIA - QUEENSLAND - Cleveland Bay - Scientific instruments**

*Former Notice* - 737(T)/2021 is cancelled

Maritime Safety Queensland Notice 67(T)/2023

Special light buoys, *Fl. Y. 2-5s*, exist in the following positions:

19° 02'.34 S 146° 36'.93 E

19° 06'.45 S 146° 32'.48 E

19° 07'.34 S 146° 52'.92 E

19° 09'.32 S 146° 52'.10 E

19° 11'.20 S 146° 50'.34 E

19° 11'.81 S 146° 49'.07 E

19° 12'.19 S 146° 59'.41 E

19° 12'.79 S 146° 47'.55 E

19° 13'.58 S 146° 56'.98 E

19° 14'.05 S 146° 49'.50 E

19° 14'.80 S 146° 48'.90 E

19° 14'.91 S 146° 50'.92 E

19° 15'.18 S 146° 51'.11 E.

**Chart temporarily affected - Aus 256 - Aus 827**

**196(T)/2023 AUSTRALIA - QUEENSLAND - Double Island Point - Light buoy unlit**

Maritime Safety Queensland Notice 81(T)/2023

The special light buoy, *Fl.Y.4s* (25° 56'.62 S 153° 09'.89 E), is unlit.

**Chart temporarily affected - Aus 815 - Aus 817**

**197(T)/2023 AUSTRALIA - QUEENSLAND - Karumba - Light buoy withdrawn**

Former Notice - 136(T)/2023 is cancelled

Maritime Safety Queensland Notice 83(T)/2023

The starboard lateral light buoy, *Fl.G.2s No17* (17° 26'.71 S 140° 46'.91 E), has been temporarily withdrawn.

**Chart temporarily affected - Aus 6**

**198(T)/2023 AUSTRALIA - QUEENSLAND - Mackay - Harbour works**

Maritime Safety Queensland Notice 80(T)/2023

Works associated with the construction of a NIB wall are in progress in an area bounded by the coast and the following:

<i>Positions</i>	<i>Remarks</i>
21° 06'.66 S 149° 13'.77 E	marked by special light buoy, <i>Fl.Y.1.5s</i>
21° 06'.65 S 149° 13'.76 E	marked by special light buoy, <i>Fl.Y.1.5s</i>
21° 06'.63 S 149° 13'.74 E	marked by special light buoy, <i>Fl.Y.1.5s</i>
21° 06'.69 S 149° 13'.75 E	marked by special light buoy, <i>Fl.Y.1.5s</i>
21° 06'.67 S 149° 13'.74 E	marked by special light buoy, <i>Fl.Y.1.5s</i>
21° 06'.66 S 149° 13'.72 E	marked by special light buoy, <i>Fl.Y.1.5s</i>
21° 06'.64 S 149° 13'.72 E	marked by special light buoy, <i>Fl.R.3s</i> .

Mariners are advised to navigate with caution in the area and keep well clear.

**Chart temporarily affected - Aus 250**

**199(T)/2023 AUSTRALIA - QUEENSLAND - Shoalwater Bay - Live firing**

Maritime Safety Queensland Notice 76(T)/2023

Live firing will be conducted in the marine component of the Shoalwater Bay training area during the period 10 March to 2 April 2023.

A marine danger area extends to all internal waters bounded by the following positions:

22° 24'.75 S 150° 17'.35 E  
 22° 35'.87 S 150° 28'.80 E  
 22° 40'.00 S 150° 38'.00 E  
 22° 46'.20 S 150° 48'.51 E  
 22° 41'.12 S 150° 50'.17 E  
 22° 38'.80 S 150° 48'.21 E  
 22° 32'.22 S 150° 47'.36 E  
 22° 31'.09 S 150° 43'.53 E  
 22° 30'.20 S 150° 33'.89 E  
 22° 24'.33 S 150° 26'.87 E  
 22° 23'.84 S 150° 18'.02 E.

All waters, creeks, beaches and other areas within the declared marine danger area are not available for access.

There will be a safe anchorage available at Port Clinton, Pearl Bay, Island Head Creek and Supply Base Townshend Island.

Mariners are advised to keep clear of this area throughout the above times.

**Chart temporarily affected - Aus 248 - Aus 260 - Aus 367 - Aus 820 - Aus 822**

**200(T)/2023 AUSTRALIA - QUEENSLAND - Shoalwater Bay - Live firing completed***Former Notice* - 100(T)/2023 is cancelled

Maritime Safety Queensland Notice 27(T)/2023

Cancel this notice on receipt.

**Chart formerly affected - Aus 248 - Aus 260 - Aus 367 - Aus 820 - Aus 822****201(T)/2023 AUSTRALIA - QUEENSLAND - Townsville - Pump discharge**

Maritime Safety Queensland Notice 90(T)/2023

Dewatering of the reclamation pond is in progress in an area bounded by the rock wall and the following:

<i>Position</i>	<i>Remarks</i>
19° 15'.05 S 146° 51'.02 E	marked by special light buoy, <i>Fl. Y. 2·5s</i>
19° 15'.04 S 146° 51'.01 E	marked by special light buoy, <i>Fl. Y. 2·5s</i>
19° 15'.02 S 146° 50'.99 E	marked by special light buoy, <i>Fl. Y. 2·5s</i> .

The water discharge will create strong currents and bubbling on the sea surface in the vicinity of the area.

Mariners are advised not to approach within 100m of the northern rock wall and not to transit between the special light buoys and the rock wall.

**Chart temporarily affected - Aus 256****202(T)/2023 AUSTRALIA - NORTHERN TERRITORY - Bathurst Island - Survey operations westwards completed***Former Notice* - 140(T)/2023 is cancelled

Northern Territory Government

Cancel this notice on receipt.

**Chart formerly affected - Aus 22 - Aus 309 - Aus 310****203(T)/2023 AUSTRALIA - NORTHERN TERRITORY - Darwin - Middle Passage - Light buoy damaged and unlit**

Department of Infrastructure, Planning and Logistics NT Notice 20(T)/2023

The starboard lateral light buoy, *Iso. G. 2s No3* (12° 21'.19 S 130° 43'.41 E), is damaged and unlit.**Chart temporarily affected - Aus 25****204(T)/2023 AUSTRALIA - WESTERN AUSTRALIA - Dampier - Tidepole Island - Pipeline removed***Former Notice* - 106(T)/2023 is cancelled

Department of Transport WA

Cancel this notice on receipt.

**Chart formerly affected - Aus 57 - Aus 60****205(T)/2023 AUSTRALIA - WESTERN AUSTRALIA - Dampier - Wreck salvaged***Former Notice* - 74(T)/2023 is cancelled

Department of Transport WA

Cancel this notice on receipt.

**Chart formerly affected - Aus 57**

**206(T)/2023 AUSTRALIA - WESTERN AUSTRALIA - Fremantle - Scientific instruments**

Department of Transport WA Notice 5573/2023

Subsurface scientific instruments, 2m below the surface, exist in the following positions:

31° 56'.45 S 115° 44'.93 E

31° 56'.71 S 115° 44'.94 E

32° 01'.30 S 115° 44'.89 E

32° 01'.81 S 115° 44'.65 E

32° 02'.21 S 115° 44'.44 E.

Mariners are advised to navigate with caution in the area.

**Chart temporarily affected - Aus 112 - Aus 754****207(T)/2023 AUSTRALIA - WESTERN AUSTRALIA - Geographe Bay - Scientific instruments recovered***Former Notice* - 841(T)/2022 is cancelled

Department of Transport WA

Cancel this notice on receipt.

**Chart formerly affected - Aus 116 - Aus 755****208(T)/2023 AUSTRALIA - WESTERN AUSTRALIA - Muiron Islands - Well plug and abandonment works northwestwards***Former Notice* - 334(T)/2022 is cancelled

Woodside Energy Ltd

Drill rig *Valaris DPS-1*, vessel *Skandi Hercules* and support vessels *Normand Swan*, *Normand Tortuga* and *Siem Pilot* are conducting well plug and abandonment works in the following positions:

21° 28'.90 S 113° 59'.32 E

21° 27'.93 S 113° 59'.58 E

21° 29'.26 S 113° 58'.51 E

21° 30'.06 S 113° 57'.85 E.

Mariners are advised to navigate with caution in the area.

**Chart temporarily affected - Aus 328 - Aus 329****209(T)/2023 AUSTRALIA - WESTERN AUSTRALIA - Muiron Islands - Subsea operations northwestwards**

Santos

On or about 14 March 2023, vessel *Southern Star* will be conducting subsea inspection, maintenance, monitoring and repair operations in the vicinity of the following positions:

21° 20'.96 S 114° 04'.39 E

21° 23'.21 S 114° 04'.60 E

21° 23'.86 S 114° 04'.08 E.

Mariners are advised to navigate with caution in the area.

**Chart temporarily affected - Aus 328 - Aus 329 - Aus 744****210(T)/2023 AUSTRALIA - WESTERN AUSTRALIA - Onslow - Beadon Bay - Scientific instruments**

Department of Transport WA Notice 5587/2023

Subsurface scientific instruments, 0.8m above seabed, exist in positions 21° 37'.67 S 115° 07'.81 E and 21° 37'.97 S 115° 07'.66 E.

**Chart temporarily affected - Aus 64**

**211(T)/2023 AUSTRALIA - WESTERN AUSTRALIA - South West Island - Wreck salvaged**

*Former Notice* - 149(T)/2023 is cancelled  
Department of Transport WA

Cancel this notice on receipt.

**Chart formerly affected - Aus 118****212(T)/2023 AUSTRALIA - SOUTH AUSTRALIA - Lucky Bay - Harbour works completed**

*Former Notice* - 506(T)/2019 is cancelled  
T-Ports

Cancel this notice on receipt.

**Chart formerly affected - Aus 777****213(T)/2023 AUSTRALIA - SOUTH AUSTRALIA - Lucky Bay - Dredging operations**

Department for Infrastructure and Transport SA Notice 4(T)/2023

Dredging operations are in progress in an area bounded by the following positions:

33° 42'.55 S 137° 02'.26 E

33° 42'.82 S 137° 02'.70 E

33° 42'.58 S 137° 02'.91 E

33° 42'.40 S 137° 02'.60 E.

A floating pipeline marked by buoys exists in the area.

The dredge will display appropriate lights and shapes.

Mariners are advised to navigate with caution in the area.

**Chart temporarily affected - Aus 777****214(T)/2023 AUSTRALIA - SOUTH AUSTRALIA - Whyalla - Scientific instruments**

Department for Infrastructure and Transport SA Notice 5(T)/2023

Special light buoys, *Fl. Y. 3s*, exist in the following positions:

33° 02'.04 S 137° 36'.01 E

33° 02'.12 S 137° 35'.86 E

33° 02'.25 S 137° 35'.92 E

33° 02'.26 S 137° 35'.99 E.

**Chart temporarily affected - Aus 136****215(T)/2023 AUSTRALIA - VICTORIA - Port Phillip - Light buoy restored**

*Former Notice* - 47(T)/2023 is cancelled  
Parks Victoria Notice 84/2023

Cancel this notice on receipt.

**Chart formerly affected - Aus 143**

**216(T)/2023 AUSTRALIA - TASMANIA - Burnie - Drilling operations**

Marine and Safety Tasmania Notice M71/2023

Barge *Sea Jack* is conducting drilling operations in an area bounded by the following positions:

41° 03'.46 S 145° 54'.75 E

41° 03'.37 S 145° 55'.13 E

41° 02'.93 S 145° 54'.97 E

41° 03'.01 S 145° 54'.60 E.

A 60m radius prohibited area exists around the barge. Vessels must not enter the prohibited area unless they have been granted approval by Burnie VTS. The barge will broadcast its position by AIS.

The barge will display appropriate lights and shapes.

Mariners are advised to navigate with caution in the area.

**Chart temporarily affected - Aus 163**

II

**HYDROGRAPHIC REPORTS**

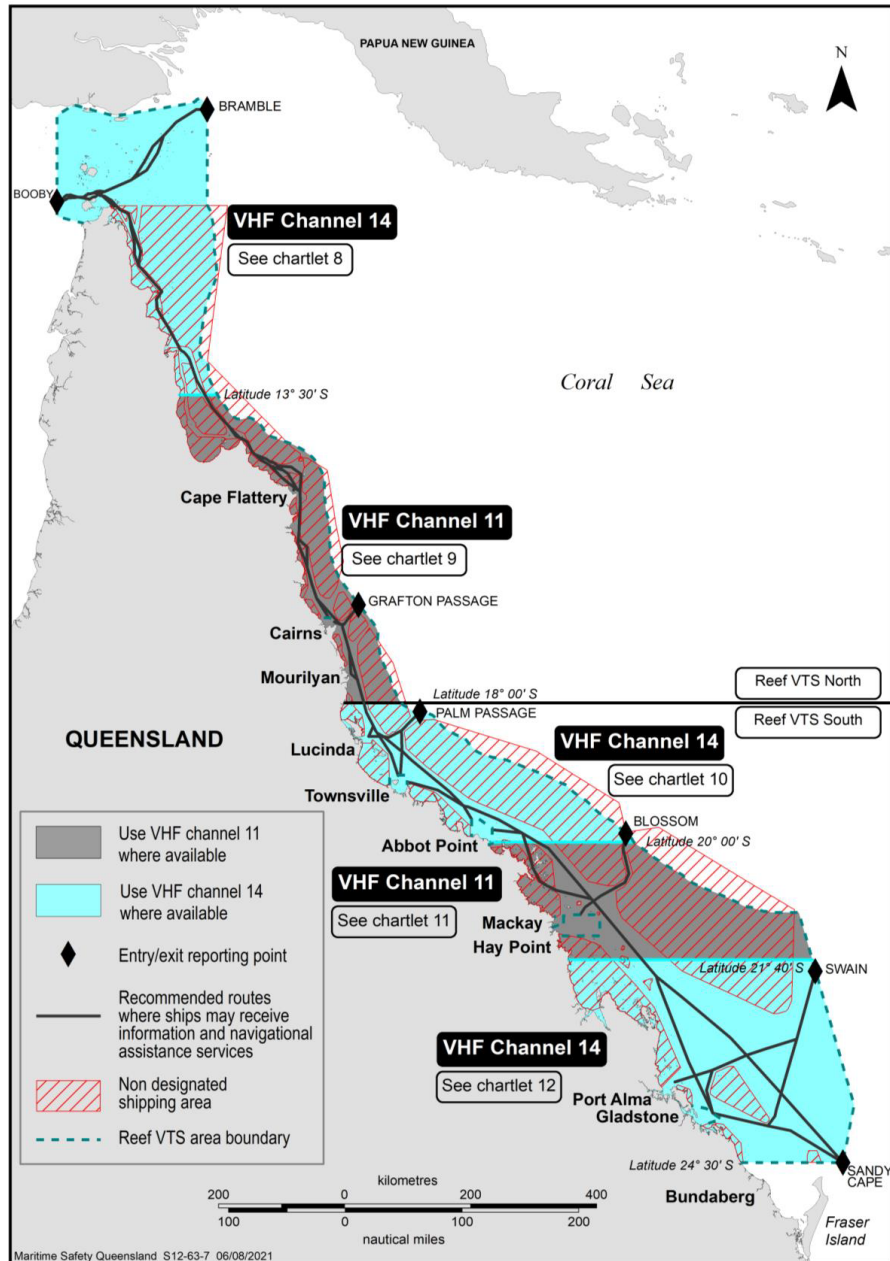
NIL

*To accompany Australian Notice to Mariners 176/2023*

4. Reef VTS will pay the cost of messages sent by Inmarsat C if the ship uses the special access codes (SAC) SAC 862 for North entry exit points or SAC 863 for Southern entry/exit points via POR LES 212. Inmarsat C terminals must be logged into the Pacific Ocean Region (POR).

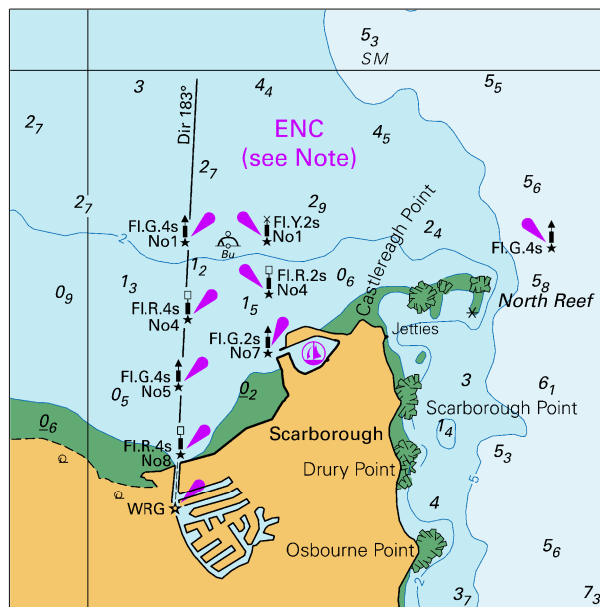


To accompany Australian Notice to Mariners 176/2023



Reef VTS VHF Channel overview

To accompany Australian Notice to Mariners 177/2023

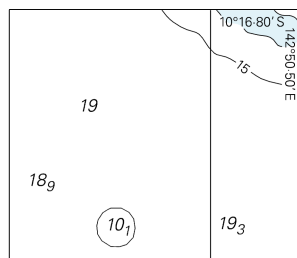


Block for chart Aus 236

(78.8 x 79.4mm)

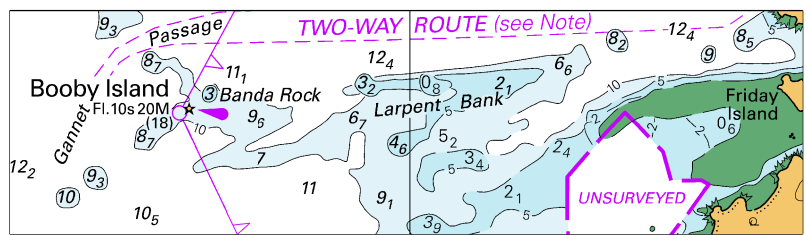
© Commonwealth of Australia 2023

*To accompany Australian Notice to Mariners 178/2023*



**Block for chart Aus 292** (38.7 x 33.1mm)  
© Commonwealth of Australia 2023

To accompany Australian Notice to Mariners 179/2023

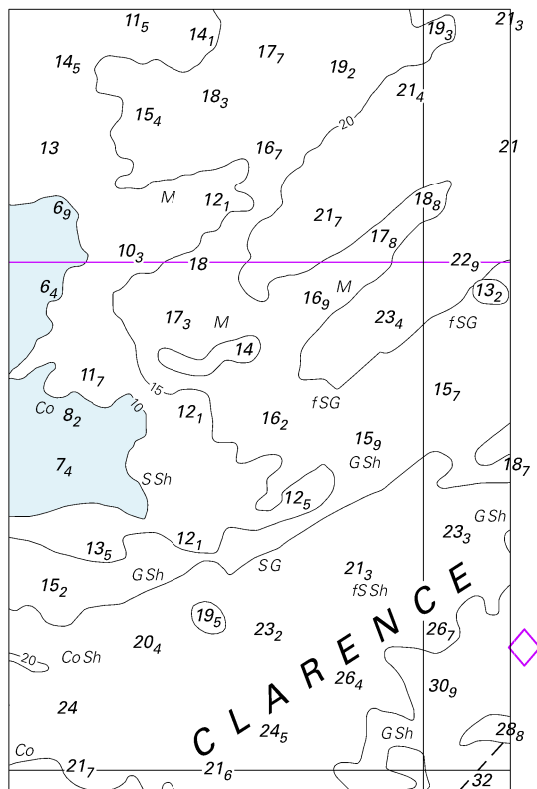


Block for chart Aus 301

(104.8 x 29.5mm)

© Commonwealth of Australia 2023

To accompany Australian Notice to Mariners 180/2023

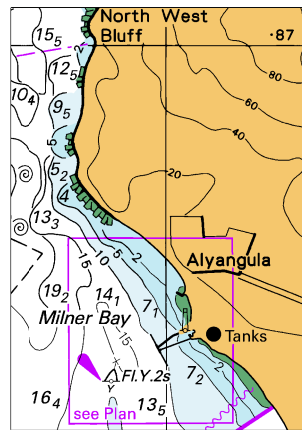


Block for chart Aus 720

(66.3 x 103.5mm)

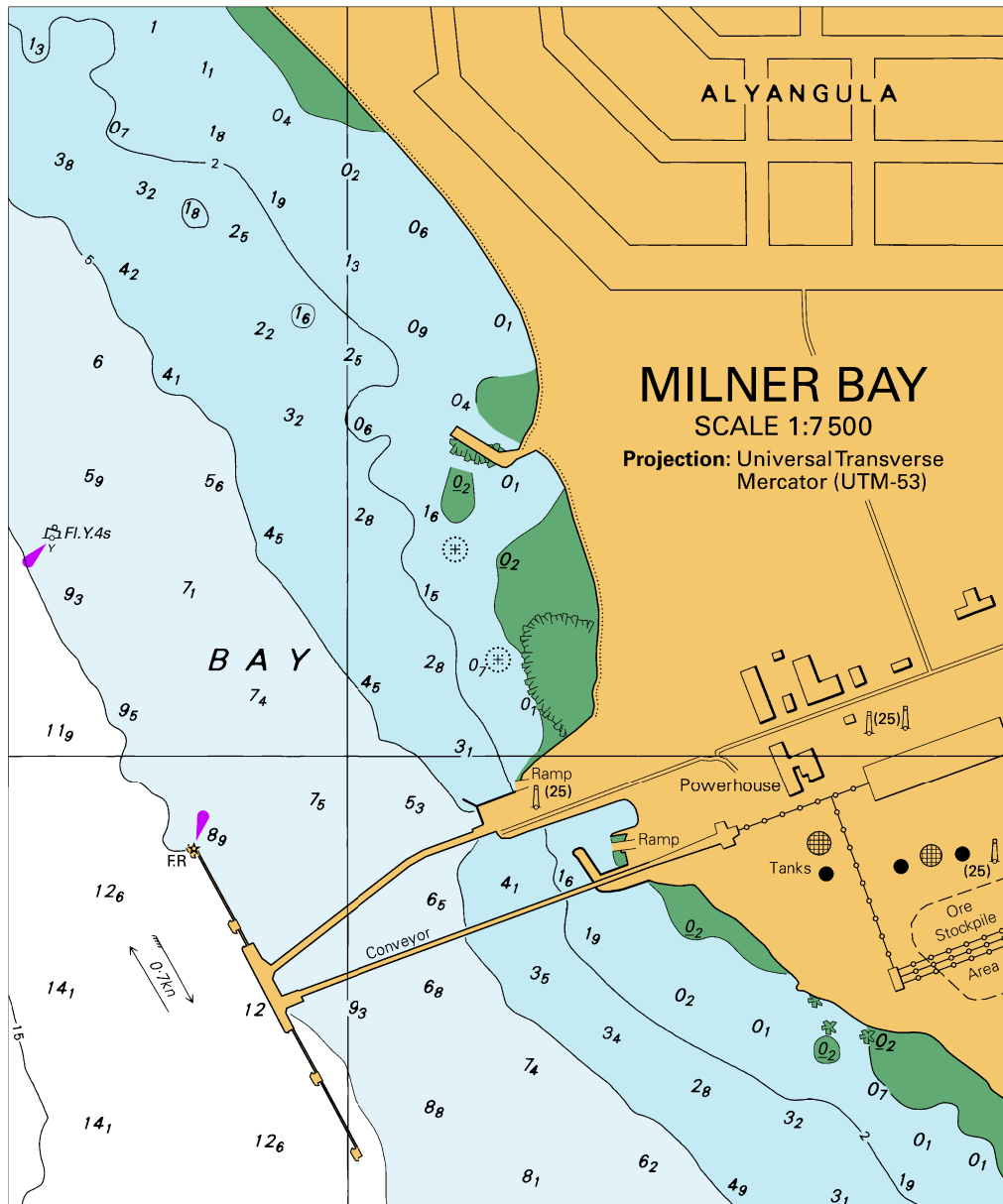
© Commonwealth of Australia 2023

To accompany Australian Notice to Mariners 181/2023



(39.2 x 55.7mm)  
**Block A for chart Aus 14**  
© Commonwealth of Australia 2023

To accompany Australian Notice to Mariners 181/2023

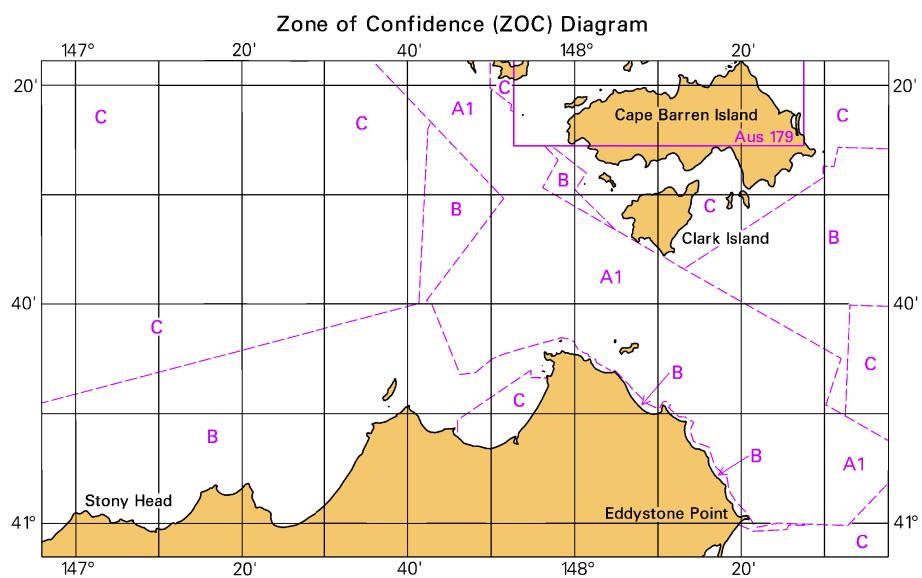


Block B for chart Aus 14

© Commonwealth of Australia 2023

(133.1 x 160.0mm)

To accompany Australian Notice to Mariners 188/2023



Block for chart Aus 798 © Commonwealth of Australia 2023

(111.9 x 65.5mm)