



3 February 2023

Edition 3

# AUSTRALIAN NOTICES TO MARINERS

## Notices 84 - 115

Published fortnightly by the Australian Hydrographic Office



Australian Notices to Mariners are the authority for correcting charts and publications published by the Australian Hydrographic Office covering Australia, Papua New Guinea, Solomon Islands, Australian Antarctic Territory and Timor-Leste.

Commodore S.T. DUNNE RAN  
*Hydrographer of Australia*

---

### SECTIONS.

- I. **Australian Notices to Mariners, including blocks and notes.**
- II. **Hydrographic Reports.**

### SUPPLEMENTS.

- I. **Tracings**
  - II. **Cumulative List of Australian Notices to Mariners.**
  - III. **Cumulative List of Temporary and Preliminary Australian Notices to Mariners.**
  - IV. **Temporary and Preliminary Notices in force.**
- 
- 

© Commonwealth of Australia 2023

This work is copyright. Apart from any use permitted under the Copyright Act 1968, no part may be reproduced by any process, adapted, communicated or commercially exploited without prior written permission from The Commonwealth represented by the Australian Hydrographic Office.

## IMPORTANT NOTICE

This edition of Notices to Mariners includes all significant information affecting Australian Hydrographic Office (AHO) products which the AHO has become aware of since the last edition. All reasonable efforts have been made to ensure the accuracy and completeness of the information, including third party information, on which these updates are based. The AHO regards third parties from which it receives information as reliable, however the AHO cannot verify all such information and errors may therefore exist. The AHO does not accept liability for errors in third party information.

---

## GENERAL INSTRUCTIONS

The substance of these notices should be inserted on the charts affected.

Bearings are referred to the true compass and are reckoned clockwise from North; those relating to lights are given as seen by an observer from seaward.

Positions quoted in notices relate to WGS84 which is the horizontal datum for all charts produced by the Australian Hydrographic Office.

The range quoted for a light is its nominal range.

Depths are with reference to the chart datum of each chart. Heights are above mean high water springs or mean higher high water, as appropriate.

The capital letter (P) or (T) after the number of any notice denotes a preliminary or temporary notice respectively, which are contained separately at the end of the permanent notices.

---

## REPORTING OF DANGERS

Mariners are particularly requested to notify the AUSTRALIAN HYDROGRAPHIC OFFICE, Locked Bag 8801 Wollongong, NSW 2500 (e-mail [datacentre@hydro.gov.au](mailto:datacentre@hydro.gov.au) or, alternatively by filling in and submitting the [Hydrographic Notes](#) forms located on the web site – [www.hydro.gov.au](http://www.hydro.gov.au)), immediately on the discovery of new dangers or suspected dangers to navigation. For changes or defects in aids to navigation notify AusSAR (Fax 02-6230 6868 or email [rccaus@amsa.gov.au](mailto:rccaus@amsa.gov.au)).

---

## AUTHORISED USE

Copies of Australian notices are available free of charge from the AHO website ([www.hydro.gov.au](http://www.hydro.gov.au)) and through the eNotices (email) service ([www.hydro.gov.au/enotices/enotices.htm](http://www.hydro.gov.au/enotices/enotices.htm)).

Individual Notices may be copied for the purpose of inserting Notice substance on official charts and publications. Paper copies may be printed by chart agents and distributed to customers on a cost recovery basis. Participating chart agents are listed on the AHO website as providing a 'Paper Notices to Mariners' service ([www.hydro.gov.au/webapps/jsp/agents/agents-list.jsp](http://www.hydro.gov.au/webapps/jsp/agents/agents-list.jsp)). Copies of the notices may not be sold for profit without prior written agreement.

## NUMERICAL INDEX OF NOTICES TO MARINERS

### Edition No 3

Notices	Aus Chart, INT Chart, ENC Cell, AHP, BA Pubs
84	Aus 906, 909, PNG 666
85	Aus 141, 178, 179, 349, 487, 787, 788, 789
86	Aus 195
87	Aus 832
88	Aus 236
89	Aus 236
90	Aus 4604, INT 604
91	Aus 902
92	Aus 59
93	Aus 4722, INT 722
94	Aus 320, 730
95	Aus 116
96	Aus 347
97(T)	Aus 809
98(T)	Aus 246
99(T)	Aus 237
100(T)	Aus 248, 260, 367, 820, 822
101(T)	Aus 22, 309, 310
102(T)	Aus 25, 26, 309
103(T)	Aus 328, 742
104(T)	Aus 320, 729, 730
105(T)	Aus 59
106(T)	Aus 57, 60
107(T)	Aus 112, 117, 754
108(T)	Aus 327, 4722, 4723, INT 722, 723
109(T)	Aus 327, 742, 4723, INT 723
110(T)	Aus 328, 329, 744
111(T)	Aus 118
112(T)	Aus 357, 487
113(T)	Aus 349, 787
114(T)	Aus 487, 800
115(T)	Aus 173, 795

## NUMERICAL INDEX OF CHARTS AFFECTED

### Edition No 3

Aus Chart	Notices	INT Chart	Notices
Aus 22	101(T)	INT 604	90
Aus 25	102(T)	INT 722	93, 108(T)
Aus 26	102(T)	INT 723	108(T), 109(T)
Aus 57	106(T)		
Aus 59	92, 105(T)		
Aus 60	106(T)		
Aus 112	107(T)		
Aus 116	95		
Aus 117	107(T)		
Aus 118	111(T)		
Aus 141	85		
Aus 173	115(T)		
Aus 178	85		
Aus 179	85		
Aus 195	86		
Aus 236	88, 89		
Aus 237	99(T)		
Aus 246	98(T)		
Aus 248	100(T)		
Aus 260	100(T)		
Aus 309	101(T), 102(T)		
Aus 310	101(T)		
Aus 320	94, 104(T)		
Aus 327	108(T), 109(T)		
Aus 328	103(T), 110(T)		
Aus 329	110(T)		
Aus 347	96		
Aus 349	85, 113(T)		
Aus 357	112(T)		
Aus 367	100(T)		
Aus 487	85, 112(T), 114(T)		
Aus 729	104(T)		
Aus 730	94, 104(T)		
Aus 742	103(T), 109(T)		
Aus 744	110(T)		
Aus 754	107(T)		
Aus 787	85, 113(T)		
Aus 788	85		
Aus 789	85		
Aus 795	115(T)		
Aus 800	114(T)		
Aus 809	97(T)		
Aus 820	100(T)		
Aus 822	100(T)		
Aus 832	87		
Aus 902	91		
Aus 906	84		
Aus 909	84		
Aus 4604	90		
Aus 4722	93, 108(T)		
Aus 4723	108(T), 109(T)		
PNG 666	84		

**84 AUSTRALIA - Products - New Charts, New Editions, Withdrawn Charts**

Australian Hydrographic Office , UKHO

**New Charts**

<i>Chart</i>	<i>Title and Geographical limits</i>	<i>Scale</i>	<i>Publication Date</i>	<i>Remarks</i>
Aus 906	Timor-Leste (North Coast) - Approaches to Hera 8° 29'.16 S – 8° 32'.70 S 125° 36'.40 E – 125° 42'.02 E	1:10 000	3 February 2023	New chart with latest bathymetric survey data.
Aus 909	Timor-Leste (North Coast) - Hera 8° 31'.02 S – 8° 32'.34 S 125° 40'.67 E – 125° 41'.65 E	1:3 750	3 February 2023	New chart with latest bathymetric survey data.

**New Electronic Navigation Chart (Aus ENC)**

<i>Cell Name</i>	<i>Title</i>	<i>Publication Date</i>	<i>Remarks</i>
AU5KAR01	Timor Leste - North Coast - Karabela	26 January 2023	
AU5KUN01	Timor Leste - North Coast - Kun	26 January 2023	

**New Editions and Withdrawn Charts**

<i>Chart</i>	<i>Title</i>	<i>Scale</i>	<i>Publication Date</i>	<i>Remarks</i>
PNG 666 (Edition 2)	Papua New Guinea - New Ireland - North Coast - Approaches to Kavieng Harbour Plan: Kavieng Harbour	1:50 000    1:12 500	3 February 2023	New edition with general updating throughout; including new bathymetric data. <b>Chart PNG 666 Edition 1 dated 4 October 2019 is now superseded and must be withdrawn from use.</b>

**Admiralty publication**

<i>NP No</i>	<i>Title</i>	<i>Date</i>	<i>Remarks</i>
NP83	ADMIRALTY List of Lights and Fog Signals. Volume K 3rd Edition 2023. Western Pacific Ocean, South of the Equator including Bismarck, Solomon, Coral and Tasman Seas.	12/1/2023	The 2nd Edition (2022) is cancelled.
NP284(4)	ADMIRALTY List of Radio Signals. Meteorological Observation Stations Volume 4, 4th Edition (2023).	26/1/2023	The 3rd Edition (2022) is cancelled.

**Chart permanently withdrawn**

Charts listed above as withdrawn no longer meet chart carriage requirements and should be marked as "superseded" and replaced with the new chart/ new edition listed prior to passage through the area covered by the new chart.

When placing orders with a chart agent between notice of forthcoming edition and its publication, mariners should advise whether their order pertains to the current edition or the new edition.

For further details refer to the AHO website at [www.hydro.gov.au](http://www.hydro.gov.au) for new edition and new chart stock arrival information.

**85 AUSTRALIA - Products - New Charts and New Editions to be published shortly**

Australian Hydrographic Office

**New Charts to be published shortly**

Chart	Title	Scale	Remarks
Aus 904	Timor Leste - North Coast - Caitehu to Hera	1:37 500	New chart with latest bathymetric survey data.

**New Editions to be published shortly**

Chart	Title	Scale	Remarks
Aus 349	Australia - South Coast - Victoria - Cape Nelson to Port Phillip	1:300 000	New edition with general updating throughout; including new bathymetric data.
Aus 487	Australia - South Coast - Bass Strait	1:500 000	New edition with general updating throughout; including new bathymetric data.
Aus 179	Australia - Tasmania - Plans in Tasmania (Sheet 1) Plan: Approaches to Grassy Harbour Franklin Sound	1:37 500 1:75 000	New edition with latest bathymetric survey data.

**Charts to be withdrawn without replacement 17 February 2022**

Chart	Title	Scale	Remarks
Aus 141 <b>Edition 1</b>	Australia - South Coast - Victoria - Plans in South West Victoria Plans: Apollo Bay Boat Harbour Port Campbell Port Fairy Warrnambool Loutit Bay Apollo Bay Port Fairy to Warrnambool	1:7 500 1:7 500 1:10 000 1:10 000 1:25 000 1:37 500 1:50 000	8 May 2009  Paper chart rationalisation.
Aus 178 <b>Edition 2</b>	Australia - Tasmania - Plans in Tasmania (Sheet 2) Plans: Currie Harbour Grassy Harbour Stanley Harbour Wynyard Port Latta Smithton Approaches to Grassy Harbour	1:7 500 1:7 500 1:7 500 1:10 000 1:12 500 1:25 000 1:37 500	18 December 2015  Paper chart rationalisation.
Aus 787 <b>Edition 1</b>	Australia - South Coast - Victoria - Childers Cove to Cape Otway	1:150 000	29 January 2010  Paper chart rationalisation.
Aus 788 <b>Edition 1</b>	Australia - South Coast - Victoria - Cape Otway to Cape Schanck	1:150 000	14 June 1996  Paper chart rationalisation.
Aus 789 <b>Edition 2</b>	Australia - South Coast - Bass Strait - King Island	1:150 000	10 December 2021  Paper chart rationalisation.

<b>86</b>	<b>AUSTRALIA - NEW SOUTH WALES - Port Kembla - Depths</b>		
NSW Ports			
<b>Aus 195</b>	[NE 25/11/2022]		
Insert	depth, 20 <sub>g</sub> m	34° 27'.300 S	150° 54'.893 E
Delete	depth, 22 <sub>3</sub> m	34° 27'.33 S	150° 54'.90 E
<b>87</b>	<b>AUSTRALIA - QUEENSLAND - Cape Flattery - Depths; rock; wreck</b>		
Maritime Safety Queensland			
<b>Aus 832</b>	[518/2022]		
Insert	accompanying block	14° 54'.3 S	145° 17'.7 E
<b>88</b>	<b>AUSTRALIA - QUEENSLAND - Moreton Bay - Bramble Bay - Pine River - Depths</b>		
Maritime Safety Queensland			
<b>Aus 236</b>	[969/2022]		
Insert	accompanying block	27° 16'.0 S	153° 04'.5 E
<b>89</b>	<b>AUSTRALIA - QUEENSLAND - Moreton Bay - St Helena Island - Light buoy</b>		
Maritime Safety Queensland Notice 30/2023			
<b>Aus 236</b>	[88/2023]		
Replace	light beacon with starboard lateral pillar light buoy, <i>Fl.G.2-5s</i> , with topmark.	27° 22'.8 S	153° 13'.6 E
<b>90</b>	<b>AUSTRALIA - CORAL SEA - Mellish Reef - Light buoy</b>		
UKHO , Australian Bureau of Meteorology			
<b>Aus 4604 (INT 604)</b>	[55/2023]		
Amend	light buoy to <i>Fl. Y.2s</i>	15° 48'.2 S	158° 34'.7 E
<b>91</b>	<b>TIMOR-LESTE - Hera - Plan withdrawn; ZOC diagram</b>		
Australian Hydrographic Office			
<b>Aus 902 (Approaches to Karabela)</b>	[776/2019]		
Delete	ZOC diagram panel, centred on	8° 28'.77 S	126° 17'.04 E
<b>Aus 902 (Approaches to Hera)</b>	[776/2019]		
Delete	plan, APPROACHES TO HERA	8° 31'.85 S	125° 41'.35 E
<b>92</b>	<b>AUSTRALIA - WESTERN AUSTRALIA - Dampier - Holden Point - Light buoy</b>		
Pilbara Ports Authority			
<b>Aus 59</b>	[419/2022]		
Insert	special pillar light buoy, <i>Fl. Y.3s P18</i> , with topmark	20° 35'.900 S	116° 45'.005 E
<b>93</b>	<b>AUSTRALIA - WESTERN AUSTRALIA - Lacepede Islands - Depths</b>		
Australian Hydrographic Office			
<b>Aus 4722 (INT 722)</b>	[198/2022]		
Insert	accompanying block	16° 46'.0 S	122° 03'.0 E

**94 AUSTRALIA - WESTERN AUSTRALIA - Osborn Reefs - Wreck**

Former Notice - 958(T)/2022 is cancelled  
 Australian Hydrographic Office

**Aus 320 [864/2022]**

Insert	depth, 17 <sub>3</sub> m, enclosed by danger circle with legend, <i>Wk</i>	15° 09'.81 S	124° 13'.46 E
--------	--	--------------	---------------

**Aus 730 [479/2022]**

Insert	depth, 17 <sub>3</sub> m, enclosed by danger circle with legend, <i>Wk</i>	15° 09'.81 S	124° 13'.46 E
--------	--	--------------	---------------

**95 AUSTRALIA - WESTERN AUSTRALIA - Warnbro Sound - Safety Bay - Light buoy; sandwaves**

Former Notice - 585(T)/2022 is cancelled  
 Department of Transport WA Notice WA913/21/2023

**Aus 116 (Warnbro Sound) [1016/2022]**

Insert	legend, <i>Sandwaves (see Note)</i>	32° 18'.92 S	115° 43'.10 E
	accompanying chart note, SANDWAVES	32° 22'.6 S	115° 44'.5 E

Delete	light buoy	32° 18'.63 S	115° 43'.08 E
--------	------------	--------------	---------------

**96 AUSTRALIA - SOUTH AUSTRALIA - Robe - Scientific instrument**

Department for Infrastructure and Transport SA Notice 58(T)/2022

**Aus 347 [524/2022]**

Insert	special spar light buoy, <i>Fl.Y.2-5s</i> , without topmark	37° 08'.49 S	139° 39'.28 E
--------	---	--------------	---------------



**97(T)/2023 AUSTRALIA - NEW SOUTH WALES - Nine Mile Beach - Drilling operations**

John Holland

On or about 8 February 2023, a barge will be conducting drilling operations in an area bounded by the coast and the following positions:

33° 03'.54 S 151° 39'.77 E

33° 03'.54 S 151° 40'.62 E

33° 02'.62 S 151° 41'.29 E

33° 02'.62 S 151° 40'.61 E.

Mariners are advised to navigate with caution in the area.

**Chart temporarily affected - Aus 809****98(T)/2023 AUSTRALIA - QUEENSLAND - Boyne River - Light buoy restored**

Former Notice - 998(T)/2020 is cancelled

Maritime Safety Queensland

Cancel this notice on receipt.

**Chart formerly affected - Aus 246****99(T)/2023 AUSTRALIA - QUEENSLAND - Brisbane River - Lytton and Quarantine Reach - Obstruction; light buoy**

Maritime Safety Queensland Notice 37(T)/2023

An obstruction marked by a special light buoy, *Fl.Y.2-5s*, exists in position 27° 24'.74 S 153° 08'.90 E.

**Chart temporarily affected - Aus 237****100(T)/2023 AUSTRALIA - QUEENSLAND - Shoalwater Bay - Live firing**

Maritime Safety Queensland Notice 27(T)/2023

Live firing will be conducted in the marine component of the Shoalwater Bay training area during the period 13 to 17 February 2023.

A marine danger area extends to all internal waters bounded by the following positions:

22° 21'.20 S 150° 10'.52 E

22° 35'.87 S 150° 28'.80 E

22° 46'.20 S 150° 48'.51 E

22° 41'.12 S 150° 50'.17 E

22° 32'.22 S 150° 47'.36 E

22° 28'.50 S 150° 45'.29 E

22° 20'.36 S 150° 43'.10 E

22° 17'.71 S 150° 33'.66 E

22° 22'.58 S 150° 30'.40 E

22° 31'.07 S 150° 34'.01 E

22° 33'.77 S 150° 33'.27 E

22° 20'.35 S 150° 12'.00 E.

All waters, creeks, beaches and other areas within the declared marine danger area are not available for access.

There will be a safe anchorage available at Freshwater, Port Clinton, West Water Port Clinton, South Arm Port Clinton, Pearl Bay, Island Head Creek and Supply Base Townshend Island

Mariners are advised to keep clear of this area throughout the above times.

**Chart temporarily affected - Aus 248 - Aus 260 - Aus 367 - Aus 820 - Aus 822**

**101(T)/2023 AUSTRALIA - NORTHERN TERRITORY - Bathurst Island - Pipe laying operations; survey operations westwards**

*Former Notice - 34(T)/2023 is cancelled*  
Allseas Marine Contractors Australia

Cancel this notice on receipt.

**Chart formerly affected - Aus 22 - Aus 309 - Aus 310**

**102(T)/2023 AUSTRALIA - NORTHERN TERRITORY - Darwin - Survey operations**

Northern Territory Government Notice 11(T)/2023

On or about 6 February 2023, MV *Warrigal*, with a towed array, will be conducting unexploded ordinance survey operations between positions 12° 25'.9 S 130° 46'.7 E and 12° 31'.6 S 130° 51'.4 E.

The vessel will display appropriate lights and shapes and will monitor VHF Ch 10 and Ch 16.

Mariners are advised to navigate with caution in the area and keep a safe distance from the survey vessel and towed array.

**Chart temporarily affected - Aus 25 - Aus 26 - Aus 309**

**103(T)/2023 AUSTRALIA - WESTERN AUSTRALIA - Barrow Island - Subsea operations completed**

*Former Notice - 1028(T)/2022 is cancelled*  
Sapura Energy Australia

Cancel this notice on receipt.

**Chart formerly affected - Aus 328 - Aus 742**

**104(T)/2023 AUSTRALIA - WESTERN AUSTRALIA - Bonaparte Archipelago - Survey operations completed**

*Former Notice - 742(T)/2022 is cancelled*  
Guardian Geomatics , Precision Hydrographic Services

Cancel this notice on receipt.

**Chart formerly affected - Aus 320 - Aus 729 - Aus 730**

**105(T)/2023 AUSTRALIA - WESTERN AUSTRALIA - Dampier - Pluto Channel - Light buoy established**

*Former Notice - 1113(T)/2019 is cancelled*  
Pilbara Ports Authority

Cancel this notice on receipt.

**Chart formerly affected - Aus 59**

**106(T)/2023 AUSTRALIA - WESTERN AUSTRALIA - Dampier - Tidepole Island - Pipeline**

Department of Transport WA Notice 5489/2023

A submerged pipeline exists between the shore and Tidepole Island in the vicinity of position 20° 39'.16 S 116° 42'.48 E. A section of the pipeline is floating on the surface however it may not always be visible.

Mariners are advised to navigate with caution in the area.

**Chart temporarily affected - Aus 57 - Aus 60**

**107(T)/2023 AUSTRALIA - WESTERN AUSTRALIA - Fremantle - Survey operations**

Precision Hydrographic Services

On or about 8 February 2023, MV *Offshore Solution*, with a 300m towed array, will be conducting survey operations between the following positions:

32° 13'.31 S 115° 42'.56 E  
 32° 08'.32 S 115° 42'.31 E  
 32° 03'.58 S 115° 41'.20 E  
 31° 58'.60 S 115° 41'.74 E  
 31° 54'.90 S 115° 35'.88 E  
 31° 54'.90 S 115° 11'.07 E.

Mariners are advised to navigate with caution in the area. 300m clearance requested.

**Chart temporarily affected - Aus 112 - Aus 117 - Aus 754**

**108(T)/2023 AUSTRALIA - WESTERN AUSTRALIA - Glomar Shoal - Subsea operations northwestwards**

Former Notice - 76(T)/2023 is cancelled

Santos , DOF Group

On or about 9 February 2023, vessel *Skandi Hercules* and support vessels will be conducting subsea operations associated with the decommissioning of the Mutineer, Exeter, Finucane and Fletcher fields in an area bounded by the following positions:

19° 19'.92 S 116° 50'.08 E  
 19° 19'.92 S 116° 30'.08 E  
 19° 09'.92 S 116° 30'.08 E  
 19° 09'.92 S 116° 50'.08 E.

Mariners are advised to navigate with caution in the area.

**Chart temporarily affected - Aus 327 - Aus 4722 (INT 722) - Aus 4723 (INT 723)**

**109(T)/2023 AUSTRALIA - WESTERN AUSTRALIA - Montebello Islands - Light buoy**

Former Notice - 39(T)/2023 is cancelled

Santos

The *Campbell* platform, *Mo(U)Y.15s* (20° 24'.85 S 115° 43'.80 E), is unlit. A special light buoy, *Mo(U)Y.15s*, exists in position 20° 24'.80 S 115° 43'.90 E.

**Chart temporarily affected - Aus 327 - Aus 742 - Aus 4723 (INT 723)**

**110(T)/2023 AUSTRALIA - WESTERN AUSTRALIA - Muiron Islands - Removal works northwestwards**

Woodside Energy Ltd

Vessel *Skandi Hercules* is conducting works to remove the Nganhurra riser turret mooring (21° 28'.89 S 114° 00'.49 E).

A 500m exclusion zone exists around the vessel.

**Chart temporarily affected - Aus 328 - Aus 329 - Aus 744**

**111(T)/2023 AUSTRALIA - WESTERN AUSTRALIA - Princess Royal Harbour - Marine farm; light buoys**

Department of Transport WA Notice 5539/2023

A marine farm, marked by special light buoys, *Fl.Y.4s*, exists in an area bounded by the following positions:

35° 04'.48 S 117° 54'.71 E  
 35° 04'.48 S 117° 54'.74 E  
 35° 04'.41 S 117° 54'.74 E  
 35° 04'.41 S 117° 54'.71 E.

**Chart temporarily affected - Aus 118**

**112(T)/2023 AUSTRALIA - VICTORIA - Ninety Mile Beach - Virtual AIS southeastwards**

Australian Maritime Safety Authority

Special virtual AIS have been established in the Gippsland region to denote an area of oil and gas decommissioning work in the following positions:

38° 23'.54 S 148° 36'.38 E  
 38° 24'.59 S 148° 30'.93 E  
 38° 25'.75 S 148° 25'.49 E  
 38° 29'.10 S 148° 36'.38 E  
 38° 31'.31 S 148° 25'.49 E  
 38° 34'.65 S 148° 36'.38 E  
 38° 35'.76 S 148° 30'.93 E  
 38° 36'.87 S 148° 25'.49 E.

Transiting ships are requested to keep clear of the area marked by the special virtual AIS.

ANTM 747(T)/2022 refers.

**Chart temporarily affected - Aus 357 - Aus 487****113(T)/2023 AUSTRALIA - VICTORIA - Port Campbell - Subsea operations southwards**

Beach Energy Limited

On or about 10 February 2023, vessel *Skandi Acergy* and a ROV will be conducting subsea construction operations in an area bounded by the following positions:

39° 13'.48 S 142° 49'.60 E  
 39° 15'.06 S 142° 54'.21 E  
 39° 13'.62 S 142° 55'.12 E  
 39° 11'.52 S 142° 51'.67 E.

Mariners are advised to navigate with caution and to keep clear of the area.

**Chart temporarily affected - Aus 349 - Aus 787****114(T)/2023 AUSTRALIA - TASMANIA - Furneaux Group - Babel Island - Wreck**

Guardian Geomatics

A wreck, least depth 29<sub>g</sub>m, exists in position 39° 51'.84 S 148° 20'.50 E.

**Chart temporarily affected - Aus 487 - Aus 800****115(T)/2023 AUSTRALIA - TASMANIA - Port Cygnet - Crooked Tree Point - Wreck**

Marine and Safety Tasmania M040(T)/2023

A wreck exists in position 43° 10'.54 S 147° 05'.26 E.

Mariners are advised to navigate with caution in the area.

**Chart temporarily affected - Aus 173 - Aus 795**

II

**HYDROGRAPHIC REPORTS**

NIL

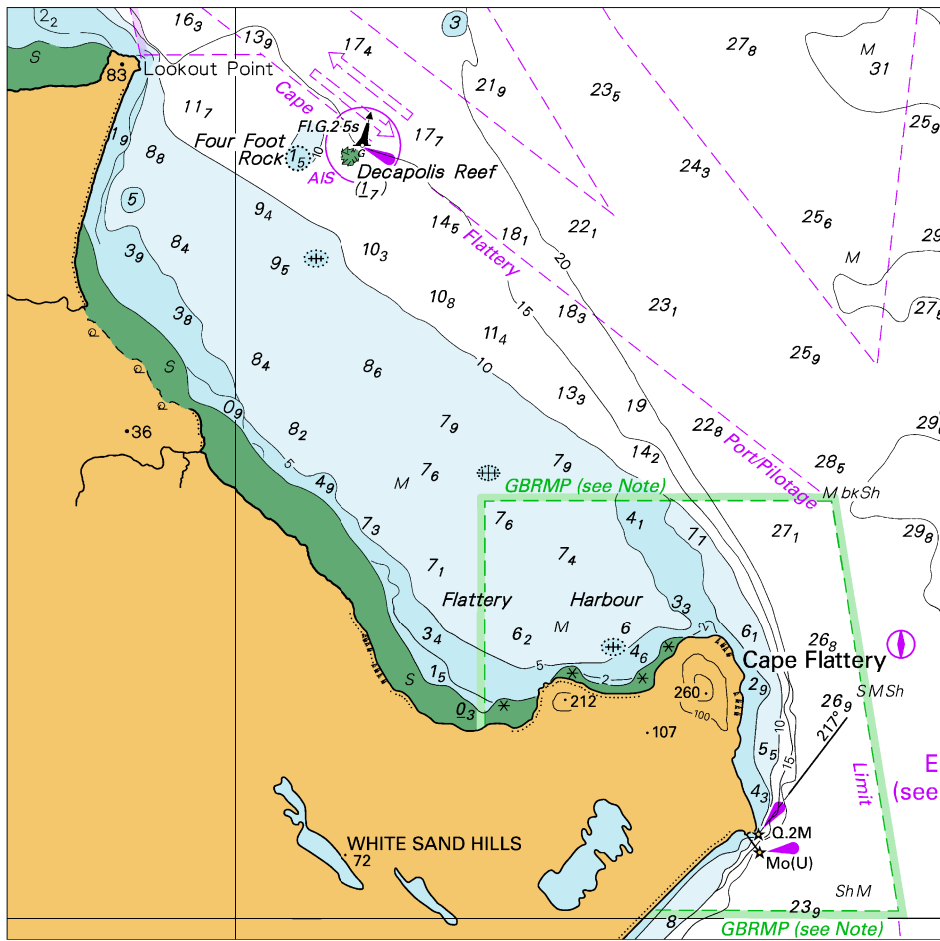
*To accompany Australian Notice to Mariners 95/2023*

SANDWAVES

The seabed in this area consists of sandwaves which cause variations in actual depth to those charted. If mariners are unsure of the condition of the seabed in a particular area, local information should be sought prior to crossing.

*Note for chart Aus 116*

To accompany Australian Notice to Mariners 87/2023

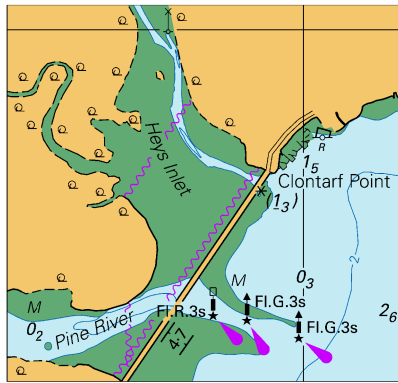


Block for chart Aus 832

© Commonwealth of Australia 2023

(124.2 x 123.1mm)

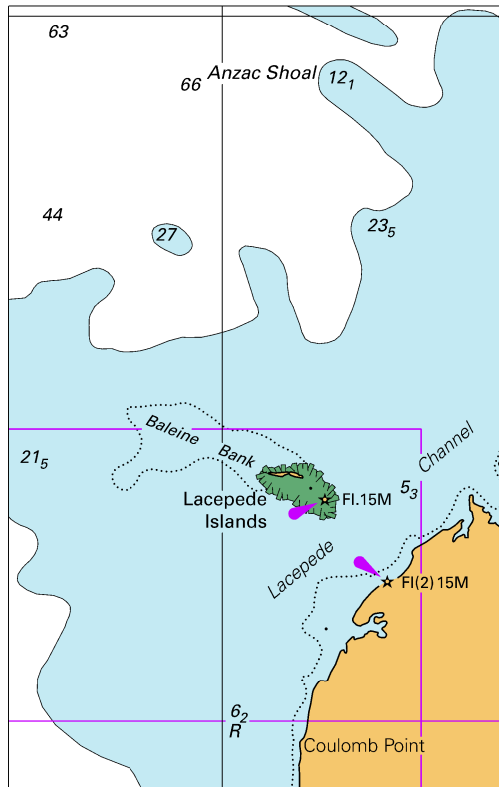
To accompany Australian Notice to Mariners 88/2023



Block for chart Aus 236 (52.5 x 49.6mm)  
© Commonwealth of Australia 2023



To accompany Australian Notice to Mariners 93/2023



Block for chart Aus 4722

(65.8 x 103.7mm)

© Commonwealth of Australia 2023