



# AUSTRALIAN NOTICES TO MARINERS

## Notices 1035 - 1072



*The Hydrographer and Staff of the Australian Hydrographic Office  
wish all users of Australian Navigational Products a Merry Christmas,  
a Happy New Year and safe, successful voyages in 2024.*



Published fortnightly by the Australian Hydrographic Office

Australian Notices to Mariners are the authority for correcting charts and publications published by the Australian Hydrographic Office covering Australia, Papua New Guinea, Solomon Islands, Australian Antarctic Territory and Timor-Leste.

Commodore R.L. PHILLIPS RAN  
*Hydrographer of Australia*

---

### SECTIONS.

- I. **Australian Notices to Mariners, including blocks and notes.**
- II. **Hydrographic Reports.**

### SUPPLEMENTS.

- I. **Tracings**
- II. **Cumulative List of Australian Notices to Mariners.**
- III. **Cumulative List of Temporary and Preliminary Australian Notices to Mariners.**
- IV. **Temporary and Preliminary Notices in force.**

---

© Commonwealth of Australia 2023

This work is copyright. Apart from any use permitted under the Copyright Act 1968, no part may be reproduced by any process, adapted, communicated or commercially exploited without prior written permission from The Commonwealth represented by the Australian Hydrographic Office.

## IMPORTANT NOTICE

This edition of Notices to Mariners includes all significant information affecting AHO products which the AHO has become aware of since the last edition. All reasonable efforts have been made to ensure the accuracy and completeness of the information, including third party information, on which these updates are based. The AHO regards third parties from which it receives information as reliable, however the AHO cannot verify all such information and errors may therefore exist. The AHO does not accept liability for errors in third party information.

---

## GENERAL INSTRUCTIONS

The substance of these notices should be inserted on the charts affected.

Bearings are referred to the true compass and are reckoned clockwise from North; those relating to lights are given as seen by an observer from seaward.

Positions quoted in notices relate to WGS84 which is the horizontal datum for all charts produced by the Australian Hydrographic Office.

The range quoted for a light is its nominal range.

Depths are with reference to the chart datum of each chart. Heights are above mean high water springs or mean higher high water, as appropriate.

The capital letter (P) or (T) after the number of any notice denotes a preliminary or temporary notice respectively, which are contained separately at the end of the permanent notices.

---

## REPORTING OF DANGERS

Mariners are particularly requested to notify the AUSTRALIAN HYDROGRAPHIC OFFICE, Locked Bag 8801 Wollongong, NSW 2500 (e-mail [datacentre@hydro.gov.au](mailto:datacentre@hydro.gov.au) or, alternatively by filling in and submitting the [Hydrographic Notes](#) forms located on the web site – [www.hydro.gov.au](http://www.hydro.gov.au)), immediately on the discovery of new dangers or suspected dangers to navigation. For changes or defects in aids to navigation notify AusSAR (Fax 02-6230 6868 or email [rccaus@amsa.gov.au](mailto:rccaus@amsa.gov.au)).

---

## AUTHORISED USE

Copies of Australian notices are available free of charge from the Australian Hydrographic Office (AHO) website ([www.hydro.gov.au](http://www.hydro.gov.au)) and through the eNotices (email) service ([www.hydro.gov.au/enotices/enotices.htm](http://www.hydro.gov.au/enotices/enotices.htm)).

Individual Notices may be copied for the purpose of inserting Notice substance on official charts and publications. Paper copies may be printed by chart agents and distributed to customers on a cost recovery basis. Participating chart agents are listed on the AHO website as providing a 'Paper Notices to Mariners' service ([www.hydro.gov.au/webapps/jsp/agents/agents-list.jsp](http://www.hydro.gov.au/webapps/jsp/agents/agents-list.jsp)). Copies of the notices may not be sold for profit without prior written agreement.

## NUMERICAL INDEX OF NOTICES TO MARINERS

### Edition No 25

Notices	Aus Chart, INT Chart, ENC Cell, AHP, BA Pubs
1035	Products - New Charts, New Editions, Withdrawn Charts
1036	Aus 198
1037	Aus 204
1038	Aus 207, 809
1039	Aus 292
1040	Aus 251
1041	Aus 821
1042	Aus 6, 303
1043	Aus 256
1044	Aus 65
1045	Aus 335, 755
1046	Aus 53, 326
1047	Aus 331
1048	Aus 181
1049	Aus 157
1050(P)	Aus 192
1051(T)	Aus 262
1052(T)	Aus 262
1053(T)	Aus 831
1054(T)	Aus 249, 250, 823
1055(T)	Aus 250
1056(T)	Aus 256
1057(T)	PNG 379, 505, 647
1058(T)	Aus 4604, INT 604, PNG 506
1059(T)	Aus 25, 26
1060(T)	Aus 65
1061(T)	Aus 319, 320, 322
1062(T)	Aus 73
1063(T)	Aus 117
1064(T)	Aus 4723, INT 723
1065(T)	Aus 112, 117
1066(T)	Aus 117
1067(T)	Aus 117
1068(T)	Aus 81
1069(T)	Aus 64, 328, 743, 744
1070(T)	Aus 328, 329, 744
1071(T)	Aus 130, 781
1072(T)	Aus 155

## NUMERICAL INDEX OF CHARTS AFFECTED

### Edition No 25

Aus Chart	Notices
Aus 6	<a href="#">1042</a>
Aus 25	<a href="#">1059(T)</a>
Aus 26	<a href="#">1059(T)</a>
Aus 53	<a href="#">1046</a>
Aus 64	<a href="#">1069(T)</a>
Aus 65	<a href="#">1044</a> , <a href="#">1060(T)</a>
Aus 73	<a href="#">1062(T)</a>
Aus 81	<a href="#">1068(T)</a>
Aus 112	<a href="#">1065(T)</a>
Aus 117	<a href="#">1063(T)</a> , <a href="#">1065(T)</a> , <a href="#">1066(T)</a> , <a href="#">1067(T)</a>
Aus 130	<a href="#">1071(T)</a>
Aus 155	<a href="#">1072(T)</a>
Aus 157	<a href="#">1049</a>
Aus 181	<a href="#">1048</a>
Aus 192	<a href="#">1050(P)</a>
Aus 198	<a href="#">1036</a>
Aus 204	<a href="#">1037</a>
Aus 207	<a href="#">1038</a>
Aus 249	<a href="#">1054(T)</a>
Aus 250	<a href="#">1054(T)</a> , <a href="#">1055(T)</a>
Aus 251	<a href="#">1040</a>
Aus 256	<a href="#">1043</a> , <a href="#">1056(T)</a>
Aus 262	<a href="#">1051(T)</a> , <a href="#">1052(T)</a>
Aus 292	<a href="#">1039</a>
Aus 303	<a href="#">1042</a>
Aus 319	<a href="#">1061(T)</a>
Aus 320	<a href="#">1061(T)</a>
Aus 322	<a href="#">1061(T)</a>
Aus 326	<a href="#">1046</a>
Aus 328	<a href="#">1069(T)</a> , <a href="#">1070(T)</a>
Aus 329	<a href="#">1070(T)</a>
Aus 331	<a href="#">1047</a>
Aus 335	<a href="#">1045</a>
Aus 743	<a href="#">1069(T)</a>
Aus 744	<a href="#">1069(T)</a> , <a href="#">1070(T)</a>
Aus 755	<a href="#">1045</a>
Aus 781	<a href="#">1071(T)</a>
Aus 809	<a href="#">1038</a>
Aus 821	<a href="#">1041</a>
Aus 823	<a href="#">1054(T)</a>
Aus 831	<a href="#">1053(T)</a>
Aus 4604	<a href="#">1058(T)</a>
Aus 4723	<a href="#">1064(T)</a>
PNG 379	<a href="#">1057(T)</a>
PNG 505	<a href="#">1057(T)</a>
PNG 506	<a href="#">1058(T)</a>
PNG 647	<a href="#">1057(T)</a>

INT Chart	Notices
INT 723	<a href="#">1064(T)</a>

INT Chart	Notices
INT 604	<a href="#">1058(T)</a>

**1035 AUSTRALIA - Products - New Charts, New Editions, Withdrawn Charts**

Australian Hydrographic Office , UKHO

**New Charts**

<i>Chart</i>	<i>Title and Geographical limits</i>	<i>Scale</i>	<i>Publication Date</i>	<i>Remarks</i>
NIL				

**New Electronic Navigation Chart (Aus ENC)**

<i>Cell Name</i>	<i>Title</i>	<i>Publication Date</i>	<i>Remarks</i>
NIL			

**New Editions and Withdrawn Charts**

<i>Chart</i>	<i>Title</i>	<i>Scale</i>	<i>Publication Date</i>	<i>Remarks</i>
NIL				

**Australian National Tide Tables 2024**

<i>AHP No</i>	<i>Remarks</i>
AHP11	<p>The Australian National Tide Tables (ANTT) 2024 is now available.</p> <p>Users can now choose to download the ANTT (PDF book), or access the same information via an interactive digital platform, from the AHO website (<a href="http://www.hydro.gov.au/prodserv/publications/antt.htm">www.hydro.gov.au/prodserv/publications/antt.htm</a>).</p> <p>The new digital platform provides an enhanced user experience by giving access to the tide information in an intuitive and functional way.</p> <p>Users can now search on individual ports and download relevant information for use offline.</p> <p><i>The ANTT 2024 (PDF book) is an official nautical publication and complies with Australian carriage requirements.</i></p>

**Admiralty publication**

<i>NP No</i>	<i>Title</i>	<i>Date</i>	<i>Remarks</i>
NP100 & e-NP100	ADMIRALTY The Mariner's Handbook Thirteenth Edition 2023	7/12/2023	The Twelfth Edition 2020 is cancelled.
NP283(2)	ADMIRALTY List of Radio Signals Maritime Safety Information Services The Americas, Far East and Oceania Volume 3(2) 4th Edition (2023)	7/12/2023	The 3rd Edition (2022) is cancelled.

**Chart permanently withdrawn**

Charts listed above as withdrawn no longer meet chart carriage requirements and should be marked as "superseded" and replaced with the new chart/ new edition listed prior to passage through the area covered by the new chart.

When placing orders with a chart agent between notice of forthcoming edition and its publication, mariners should advise whether their order pertains to the current edition or the new edition.

For further details refer to the AHO website at [www.hydro.gov.au](http://www.hydro.gov.au) for new edition and new chart stock arrival information.

**1036 AUSTRALIA - Products - New Charts and New Editions to be published shortly**  
Australian Hydrographic Office

**New Charts to be published shortly**

Chart	Title	Scale	Remarks
NIL			

**New Editions to be published shortly**

Chart	Title	Scale	Remarks
Aus 198	Australia - East Coast - New South Wales - Botany Bay and Port Hacking	1:25 000	New edition with general updating throughout; including new bathymetric data and updates to nav aids.

**1037 AUSTRALIA - NEW SOUTH WALES - Broken Bay to Pittwater - Nav aids; submarine power cable; infrastructure**

Transport for NSW , Ausgrid

**Aus 204 [991/2023]**

Insert	accompanying block	33° 38'.5 S	151° 17'.5 E
Amend	light beacon to VQ(3)5s	33° 34'.73 S	151° 14'.84 E
Move	light buoy to	33° 32'.30 S	151° 20'.12 E
	light buoy to	33° 32'.255 S	151° 20'.096 E
		33° 32'.31 S	151° 20'.22 E
		33° 32'.292 S	151° 20'.175 E

**1038 AUSTRALIA - NEW SOUTH WALES - Newcastle - Precautionary areas; pilot boarding place**

Port Authority of New South Wales

**Aus 207 [NE 27/10/2023]**

Insert	magenta dashed line, between	32° 59'.220 S	151° 51'.784 E
		32° 57'.440 S	151° 51'.021 E
		32° 57'.004 S	151° 52'.135 E
		32° 59'.220 S	151° 53'.082 E
	accompanying block	32° 55'.6 S	151° 51'.5 E
Delete	magenta dashed line, between	32° 59'.22 S	151° 52'.26 E
		32° 57'.87 S	151° 50'.54 E
		32° 57'.14 S	151° 51'.35 E
		32° 58'.85 S	151° 53'.53 E
		32° 59'.22 S	151° 53'.12 E

**Aus 809 [921/2023]**

Insert	accompanying block	32° 55'.0 S	151° 50'.0 E
--------	--------------------	-------------	--------------

**1039 AUSTRALIA - QUEENSLAND - Albany Rock - Rock**

Precision Hydrographic Services

**Aus 292 [178/2023]**

Insert	depth, $0_4m$ , enclosed by danger circle with legend, <i>R</i> , and legend, <i>Rep</i> (2023)	10° 43'.25 S	142° 37'.96 E
--------	---	--------------	---------------

**1040 AUSTRALIA - QUEENSLAND - Heskett Rock - Light buoy**

Maritime Safety Queensland Notice 558/2023

**Aus 251 [954/2023]**

Insert	south cardinal conical light buoy, Q(6)+LFI. 15s , with topmark	20° 56'.29 S	149° 28'.99 E
--------	---	--------------	---------------

**1041 AUSTRALIA - QUEENSLAND - Hydrographers Passage - Depth**  
UKHO

**Aus 821** [NE 10/11/2023]

Replace depth, 5m, with depth, 51m

20° 16'.7 S

149° 56'.7 E

**1042 AUSTRALIA - QUEENSLAND - Karumba - Artificial reef; fish aggregating devices northwestwards**  
Department of Agriculture and Fisheries

**Aus 6** [550/2023]

Insert fish haven with minimum depth, 4m, between

17° 21'.664 S

140° 43'.890 E

17° 21'.714 S

140° 43'.836 E

17° 21'.795 S

140° 43'.902 E

17° 21'.732 S

140° 43'.954 E

17° 21'.664 S

140° 43'.890 E

special conical light buoy, *Fl. Y. 3s FAD*, without topmark

17° 21'.737 S

140° 43'.887 E

**Aus 303** [209/2019]

Insert special conical light buoy, *Fl. Y. 3s FAD*, without topmark

17° 14'.92 S

140° 37'.29 E

special conical light buoy, *Fl. Y. 3s FAD*, without topmark

17° 21'.74 S

140° 43'.89 E

**1043 AUSTRALIA - QUEENSLAND - Townsville - Cleveland Bay - Light buoy**  
Maritime Safety Queensland Notice 518/2023

**Aus 256** [997/2023]

Insert special conical light buoy, *Fl. Y. 2-5s*, without topmark

19° 13'.84 S

146° 55'.90 E

**1044 AUSTRALIA - WESTERN AUSTRALIA - Barrow Island - Town Point - Scientific instrument**  
Chevron Australia

**Aus 65** [310/2023]

Move light buoy  
to

20° 48'.8 S

115° 29'.9 E

20° 48'.61 S

115° 29'.93 E

**1045 AUSTRALIA - WESTERN AUSTRALIA - Naturaliste Reefs - Fish aggregating devices westwards**  
Department of Transport WA

**Aus 335** [928/2023]

Replace buoy with special conical light buoy, *Fl. Y. 5s FAD (Nov-Apr)*, without topmark

33° 08'.7 S

114° 56'.6 E

buoy with special conical light buoy, *Fl. Y. 5s FAD (Nov-Apr)*, without topmark

33° 14'.0 S

114° 54'.5 E

buoy with special conical light buoy, *Fl. Y. 5s FAD (Nov-Apr)*, without topmark

33° 16'.6 S

114° 32'.6 E

buoy with special conical light buoy, *Fl. Y. 5s FAD (Nov-Apr)*, without topmark

33° 19'.0 S

114° 41'.8 E

**Aus 755** [1009/2023]

Replace buoy with special conical light buoy, *Fl. Y. 5s FAD (Nov-Apr)*, without topmark

33° 08'.7 S

114° 56'.6 E

buoy with special conical light buoy, *Fl. Y. 5s FAD (Nov-Apr)*, without topmark

33° 14'.0 S

114° 54'.5 E

**1046 AUSTRALIA - WESTERN AUSTRALIA - Port Hedland - Depths**

Precision Hydrographic Services

**Aus 53 [802/2023]**

Insert	depth, $9_4m$ , enclosed by contour	20° 12'.05 S	118° 27'.66 E
	depth, $9_2m$ , enclosed by contour	20° 12'.11 S	118° 27'.99 E
	depth, $6_5m$	20° 12'.86 S	118° 27'.84 E

Replace	depth, $6_4m$ , with depth, $5_9m$	20° 13'.4 S	118° 27'.7 E
---------	------------------------------------	-------------	--------------

Delete	depth, $9_6m$	20° 12'.9 S	118° 28'.0 E
--------	---------------	-------------	--------------

**Aus 326 [802/2023]**

Replace	depth, $5_3m$ , with depth, $7_9m$	20° 12'.4 S	118° 27'.6 E
	depth, $4_6m$ , and enclosing contour with depth, $5_9m$	20° 13'.4 S	118° 27'.7 E

**1047 AUSTRALIA - WESTERN AUSTRALIA - Useless Loop - South Passage - Fish aggregating devices**

Department of Transport WA

**Aus 331 [929/2023]**

Insert	special conical light buoy, <i>Fl. Y. 5s FAD (Nov-Apr)</i> , without topmark	26° 06'.38 S	113° 06'.34 E
	special conical light buoy, <i>Fl. Y. 5s FAD (Nov-Apr)</i> , without topmark	26° 10'.35 S	113° 02'.19 E

**1048 AUSTRALIA - VICTORIA - Corner Inlet - Depths**

Gippsland Ports

**Aus 181 [1011/2023]**

Insert	accompanying ZOC diagram	38° 38'.0 S	146° 22'.2 E
	accompanying block B	38° 45'.2 S	146° 41'.5 E
	accompanying block A	38° 50'.3 S	146° 33'.8 E

**1049 AUSTRALIA - VICTORIA - Port Phillip - Kirk Point - Infrastructure**

Parks Victoria Notice 446/2023

**Aus 157 [436/2023]**

Insert	accompanying block	38° 02'.5 S	144° 34'.7 E
--------	--------------------	-------------	--------------



**1050(P)/2023 AUSTRALIA - NEW SOUTH WALES - Twofold Bay - Eden - Snug Cove - Wave attenuator**

*Former Notice* - 203(T)/2022 is cancelled  
Port Authority of New South Wales

A wave attenuator exists between the following positions:

37° 04'.36 S 149° 54'.41 E

37° 04'.35 S 149° 54'.36 E

37° 04'.40 S 149° 54'.26 E

37° 04'.35 S 149° 54'.21 E.

Charts will be updated in due course.

**Chart which will be affected - Aus 192****1051(T)/2023 AUSTRALIA - QUEENSLAND - Cairns - Trinity Inlet - Wreck**

Department of Defence

A wreck, least depth 2<sub>6</sub>m, exists in position 16° 55'.40 S 145° 47'.11 E.

**Chart temporarily affected - Aus 262****1052(T)/2023 AUSTRALIA - QUEENSLAND - Cairns - Trinity Inlet - Wreck**

Maritime Safety Queensland Notice 569(T)/2023

A wreck marked by a special light buoy, *Fl.Y.2-5s*, exists in position 16° 56'.27 S 145° 46'.98 E.

Mariners are advised to navigate with caution in the area.

**Chart temporarily affected - Aus 262****1053(T)/2023 AUSTRALIA - QUEENSLAND - Cedar Bay - Wreck**

Maritime Safety Queensland Notice 562/2023

A wreck marked by a special light buoy, *Fl.Y.2-5s*, exists in position 15° 49'.64 S 145° 22'.40 E.

Mariners are advised to navigate with caution in the area.

**Chart temporarily affected - Aus 831****1054(T)/2023 AUSTRALIA - QUEENSLAND - Hay Point - Exclusion zone removed**

*Former Notice* - 981(T)/2021 is cancelled  
Maritime Safety Queensland

Cancel this notice on receipt.

**Chart formerly affected - Aus 249 - Aus 250 - Aus 823****1055(T)/2023 AUSTRALIA - QUEENSLAND - Hay Point - Light buoys recovered**

*Former Notice* - 238(T)/2022 is cancelled  
Maritime Safety Queensland

Cancel this notice on receipt.

**Chart formerly affected - Aus 250****1056(T)/2023 AUSTRALIA - QUEENSLAND - Townsville - Obstruction removed; light buoy recovered**

*Former Notice* - 26(T)/2022 is cancelled  
Maritime Safety Queensland

Cancel this notice on receipt.

**Chart formerly affected - Aus 256**

**1057(T)/2023 PAPUA NEW GUINEA - Caution Bay - Idiha Island - Light unlit**  
National Maritime Safety Authority PNG Coastal Navigation Warning 25/2023

The light, *Fl(2)5s 23m 10M* (9° 25'.64 S 146° 52'.96 E), is unlit.

**Chart temporarily affected - PNG 379 - PNG 505 - PNG 647**

**1058(T)/2023 PAPUA NEW GUINEA - Rothery Passage - Light unlit**  
National Maritime Safety Authority PNG Coastal Navigation Warning 26/2023

The light, *Fl(3)15s 22m 10M* (10° 21'.06 S 148° 41'.46 E), is unlit.

**Chart temporarily affected - Aus 4604 (INT 604) - PNG 506**

**1059(T)/2023 AUSTRALIA - NORTHERN TERRITORY - Darwin - Dredging operations**  
Northern Territory Government Notice 81(T)/2023

Dredging operations are in progress in the Darwin Naval Base (12° 27'.67 S 130° 49'.37 E).

A submerged pipeline marked by special light buoys, *Fl.Y.3s*, exists between positions 12° 27'.71 S 130° 49'.26 E and 12° 27'.78 S 130° 49'.12 E.

A lit yellow mooring buoy, *Fl.Y.3s*, exists in position 12° 27'.78 S 130° 49'.12 E.

Vessels not directly involved in the dredging operations are prohibited from entering the area within a 50m radius of the mooring buoy and 25m either side of the pipeline.

Mariners are advised to navigate with caution in the area.

**Chart temporarily affected - Aus 25 - Aus 26**

**1060(T)/2023 AUSTRALIA - WESTERN AUSTRALIA - Barrow Island - Town Point - Light buoy unlit**  
Chevron Australia Notice 4/2023

The port lateral light buoy, *Fl.R.3s* (20° 47'.86 S 115° 29'.38 E), is unlit.

**Chart temporarily affected - Aus 65**

**1061(T)/2023 AUSTRALIA - WESTERN AUSTRALIA - Browse Island - Subsea operations completed**  
*Former Notice - 859(T)/2023 is cancelled*  
McDermott Australia

Cancel this notice on receipt.

**Chart formerly affected - Aus 319 - Aus 320 - Aus 322**

**1062(T)/2023 AUSTRALIA - WESTERN AUSTRALIA - Carnarvon - Light beacon unlit**  
Department of Transport WA Notice 5843/2023

The light beacon, *Iso.4s 4M* (24° 54'.18 S 113° 38'.39 E), is unlit.

**Chart temporarily affected - Aus 73**

**1063(T)/2023 AUSTRALIA - WESTERN AUSTRALIA - Cockburn Sound - Kwinana - Scientific instruments**  
Fremantle Ports Notice 5(T)/2023

Subsurface scientific instruments, 8m below the surface, exist in positions 32° 11'.88 S 115° 45'.36 E and 32° 11'.94 S 115° 45'.42 E.

**Chart temporarily affected - Aus 117**

**1064(T)/2023 AUSTRALIA - WESTERN AUSTRALIA - Exmouth Plateau - Scientific instruments**

Woodside Energy Ltd

On or about 13 December 2023, vessel *MMA Leeuwin* will deploy subsurface scientific instruments on the seabed in the following positions:

19° 45'.88 S 113° 14'.46 E  
 19° 49'.46 S 113° 13'.14 E  
 19° 52'.51 S 113° 06'.69 E  
 19° 52'.65 S 113° 13'.41 E  
 19° 53'.31 S 113° 10'.06 E  
 19° 53'.45 S 113° 08'.73 E  
 19° 53'.51 S 113° 08'.73 E  
 19° 53'.81 S 113° 06'.92 E.

Mariners are advised to navigate with caution in the area.

**Chart temporarily affected - Aus 4723 (INT 723)**

**1065(T)/2023 AUSTRALIA - WESTERN AUSTRALIA - Fremantle - Arthur Head - Scientific instrument**

Department of Transport WA Notice 5895/2023

A subsurface scientific instrument, 5.5m below the surface, exists in positions 32° 03'.31 S 115° 44'.16 E.

**Chart temporarily affected - Aus 112 - Aus 117**

**1066(T)/2023 AUSTRALIA - WESTERN AUSTRALIA - Fremantle to Garden Island - Survey operations**

Precision Hydrographic Services

On or about 14 December 2023, vessel *Prowler* will be conducting survey operations in the vicinity of the following positions:

32° 06'.43 S 115° 41'.86 E  
 32° 10'.26 S 115° 41'.43 E  
 32° 12'.03 S 115° 44'.08 E  
 32° 13'.58 S 115° 42'.57 E.

The vessel will display appropriate lights and shapes and will monitor VHF Ch 12.

Mariners are advised to navigate with caution in the area.

**Chart temporarily affected - Aus 117**

**1067(T)/2023 AUSTRALIA - WESTERN AUSTRALIA - Garden Island - Beacon Head - Obstruction removed; light buoy recovered**

*Former Notice - 1165(T)/2019* is cancelled  
 Fremantle Ports

Cancel this notice on receipt.

**Chart formerly affected - Aus 117**

**1068(T)/2023 AUSTRALIA - WESTERN AUSTRALIA - Geraldton - Champion Bay - Light buoy withdrawn**

Mid West Ports Notice 12(T)/2023

The isolated danger light buoy, *Fl(2)5s* (28° 43'.88 S 114° 33'.24 E), has been temporarily withdrawn.

A special spar light buoy, *Fl(2)Y.5s*, exists in position 28° 43'.83 S 114° 33'.28 E.

**Chart temporarily affected - Aus 81**

**1069(T)/2023 AUSTRALIA - WESTERN AUSTRALIA - Thevenard Island - Oil field to be decommissioned**  
Chevron Australia

On or about 17 December 2023, barge *WB400* and support vessels will be conducting works to remove the platforms as follows:

<i>Position</i>	<i>Remarks</i>
21° 26'.74 S 115° 02'.44 E	Saladin B
21° 28'.77 S 115° 00'.50 E	Saladin C
21° 26'.42 S 115° 03'.24 E	Saladin A
21° 31'.33 S 114° 58'.18 E	Cowle
21° 29'.37 S 114° 59'.41 E	Yammaderry
21° 35'.82 S 114° 58'.81 E	Skate
21° 36'.94 S 114° 56'.55 E	Roller C
21° 38'.17 S 114° 55'.43 E	Roller B
21° 38'.48 S 114° 54'.42 E	Roller A.

The barge will deploy eight anchors marked by light buoys.

A 1500m radius exclusion zone exists around the barge.

Vessels will display appropriate lights and shapes and will monitor VHF Ch 14 and Ch 16.

Mariners area advised to navigate with caution in the area and keep well clear.

**Chart temporarily affected - Aus 64 - Aus 328 - Aus 743 - Aus 744**

**1070(T)/2023 AUSTRALIA - WESTERN AUSTRALIA - Thevenard Island to Muiron Islands - Subsea operations northwestwards**

Technip FMC

Vessel *Deep Orient* is conducting subsea structure recovery operations in the Griffin Field (21° 13'.4 S 114° 38'.7 E), Enfield Field (21° 28'.9 S 113° 59'.3 E) and the Stybarrow Field (21° 24'.3 S 113° 51'.7 E).

Mariners are advised to navigate with caution in the area.

**Chart temporarily affected - Aus 328 - Aus 329 - Aus 744**

**1071(T)/2023 AUSTRALIA - SOUTH AUSTRALIA - Largs Bay to Brighton - Scientific instruments**

Department for Infrastructure and Transport SA Notice 70(T)/2023

Subsurface scientific instruments, 1m above seabed, exist in the following positions:

34° 49'.74 S 138° 28'.52 E  
34° 54'.75 S 138° 29'.06 E  
35° 00'.15 S 138° 30'.24 E.

Mariners are advised to navigate with caution in the area.

**Chart temporarily affected - Aus 130 - Aus 781**

**1072(T)/2023 AUSTRALIA - VICTORIA - Port Phillip - Sandringham - Light buoy restored**

*Former Notice - 947(T)/2023 is cancelled*

Parks Victoria

Cancel this notice on receipt.

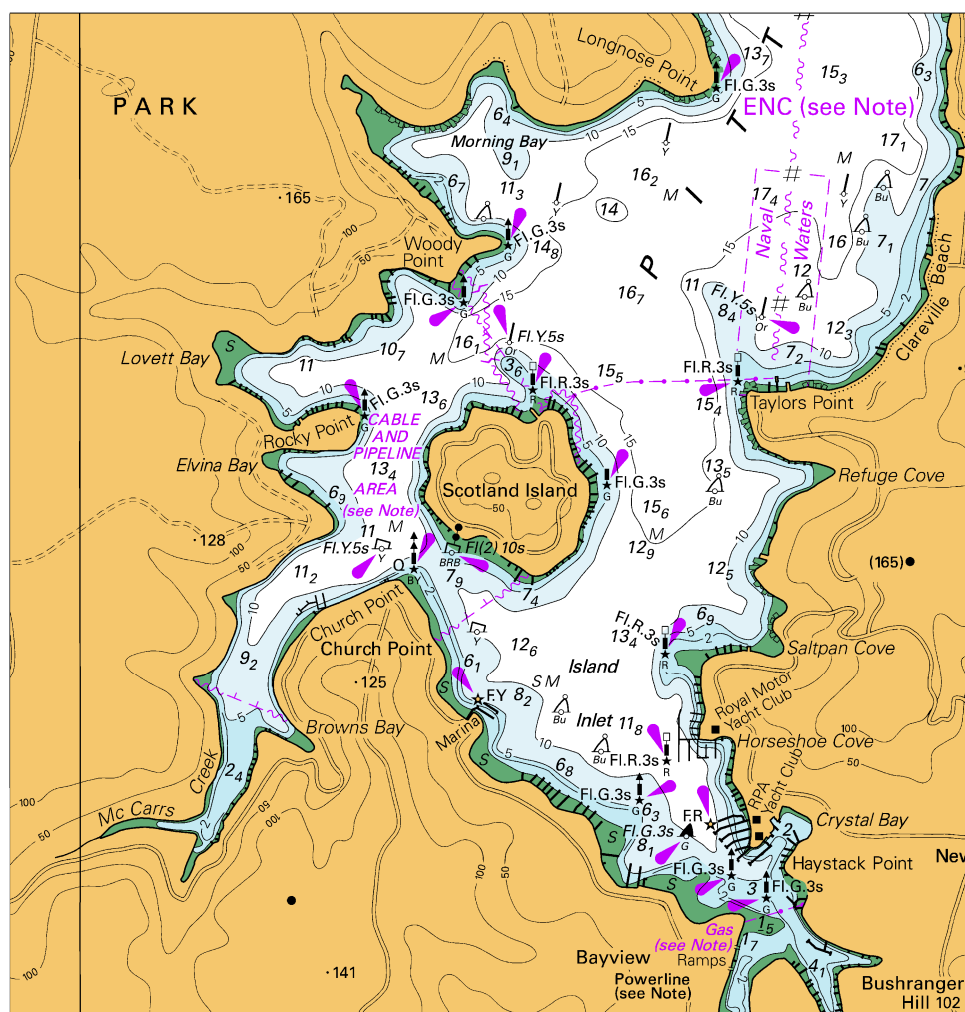
**Chart formerly affected - Aus 155**

II

**HYDROGRAPHIC REPORTS**

NIL

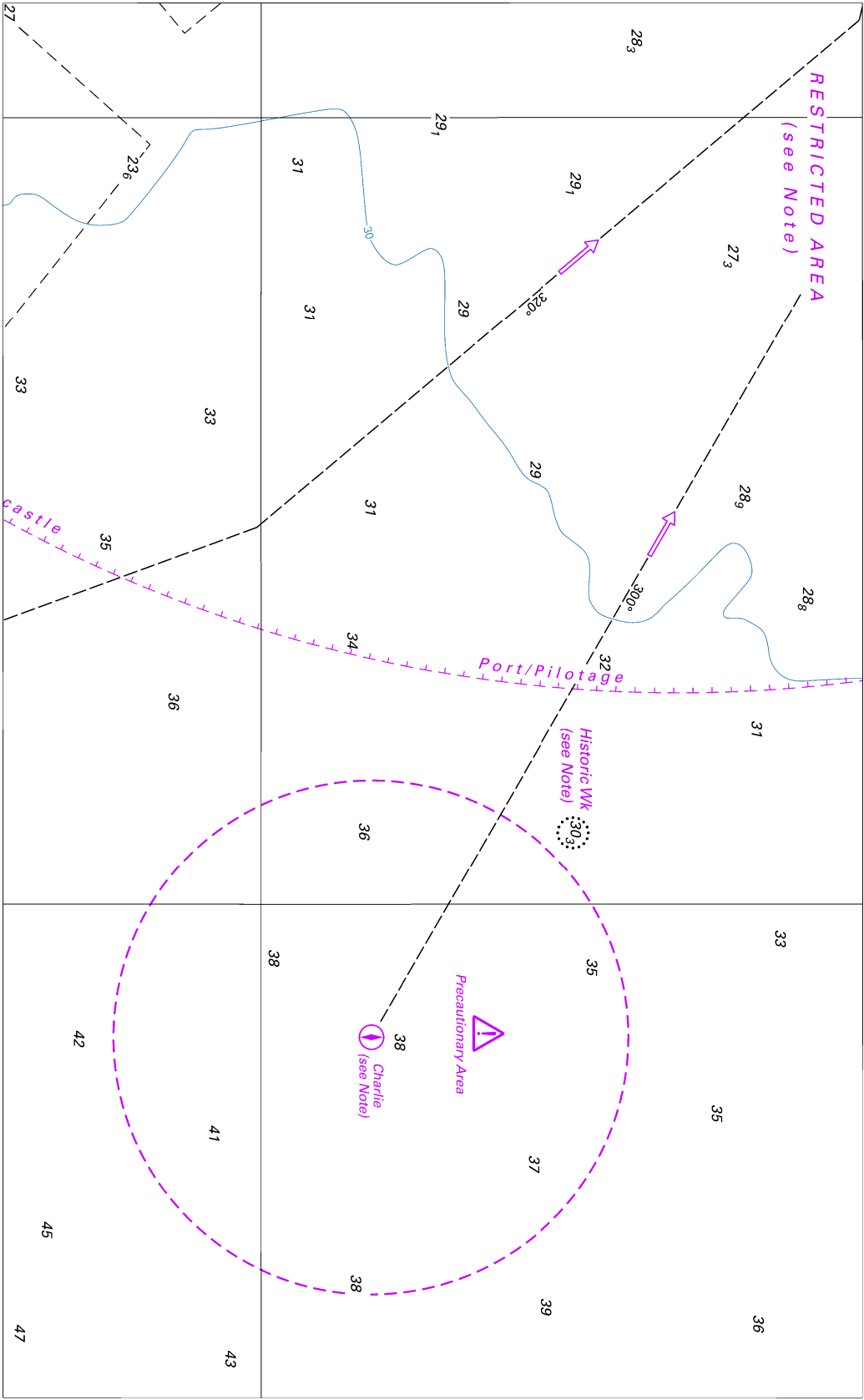
To accompany Australian Notice to Mariners 1037/2023



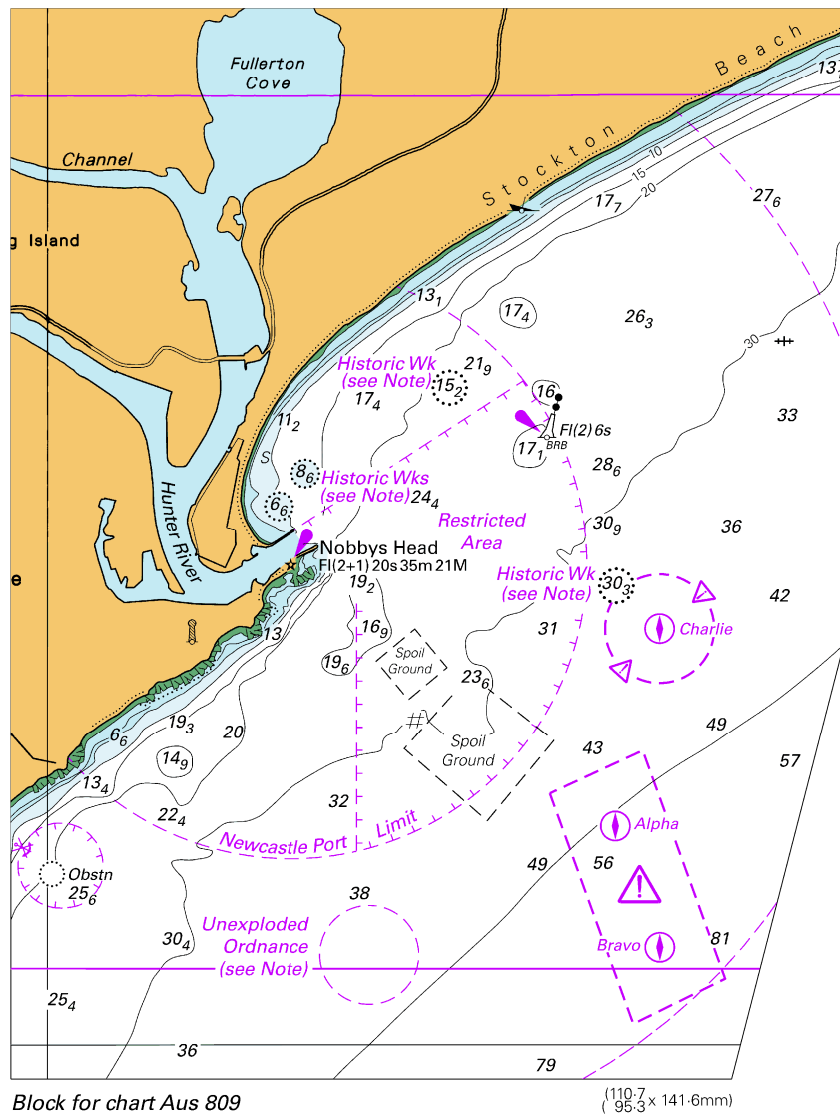
Block for chart Aus 204

© Commonwealth of Australia 2023

(126.3 x 132.4mm)

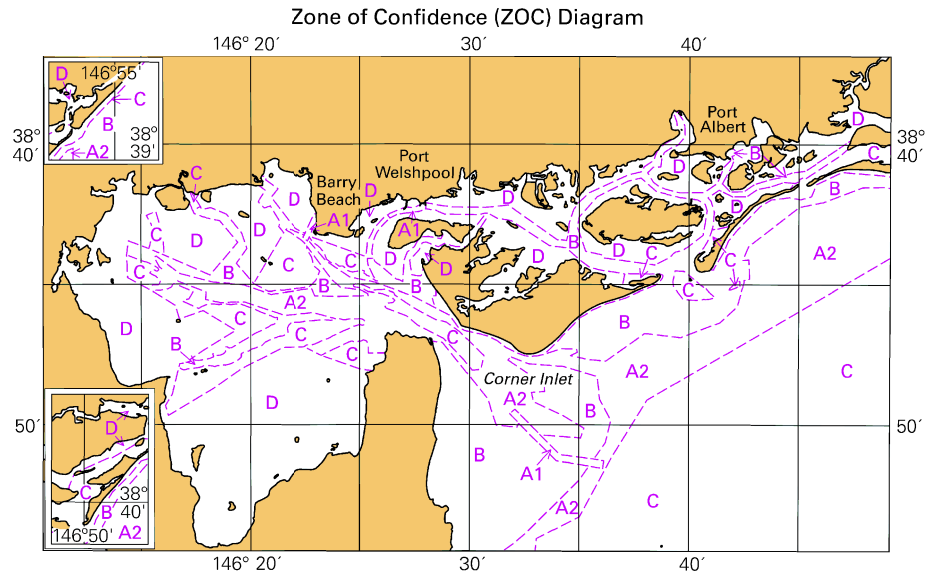


To accompany Australian Notice to Mariners 1038/2023





To accompany Australian Notice to Mariners 1048/2023

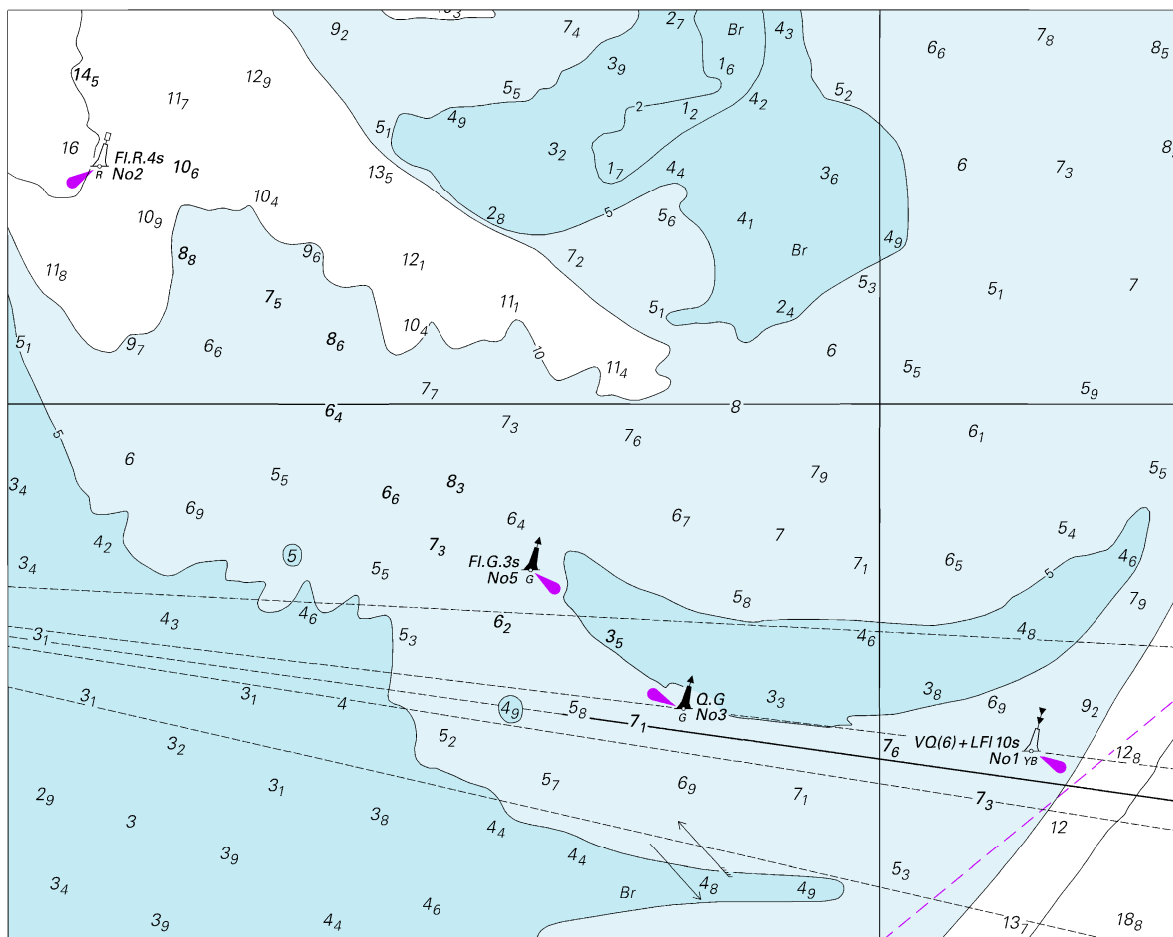


Block for chart Aus 181

© Commonwealth of Australia 2023

(112 x 65.2mm)

To accompany Australian Notice to Mariners 1048/2023

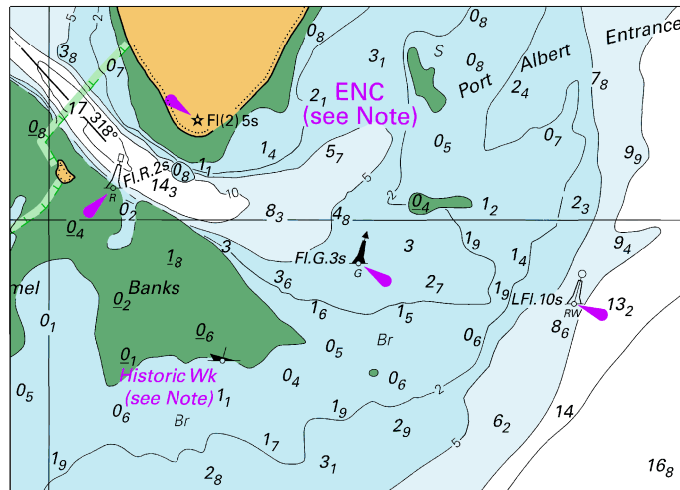


Block A for chart Aus 181

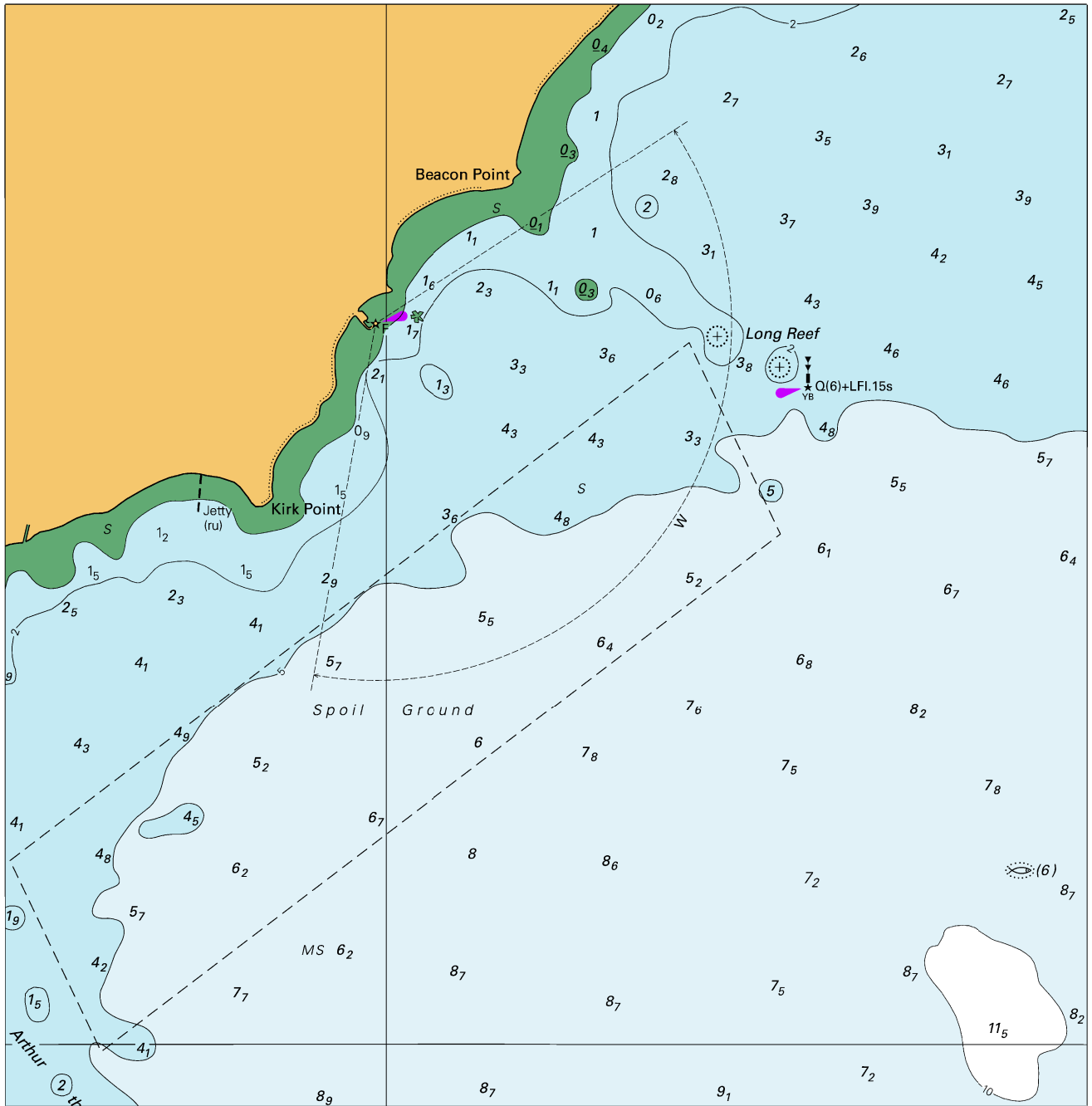
© Commonwealth of Australia 2023

(155.0 x 123.1mm)  
(154.9 x 123.1mm)

To accompany Australian Notice to Mariners 1048/2023



To accompany Australian Notice to Mariners 1049/2023



Block for chart Aus 157

© Commonwealth of Australia 2023

(172.2 x 175.4mm)