



29 September 2023

Edition 20

AUSTRALIAN NOTICES TO MARINERS

Notices 843 - 879

Published fortnightly by the Australian Hydrographic Office



Australian Notices to Mariners are the authority for correcting charts and publications published by the Australian Hydrographic Office covering Australia, Papua New Guinea, Solomon Islands, Australian Antarctic Territory and Timor-Leste.

Commodore S.T. DUNNE RAN
Hydrographer of Australia

SECTIONS.

- I. **Australian Notices to Mariners, including blocks and notes.**
- II. **Hydrographic Reports.**

SUPPLEMENTS.

- I. **Tracings**
 - II. **Cumulative List of Australian Notices to Mariners.**
 - III. **Cumulative List of Temporary and Preliminary Australian Notices to Mariners.**
 - IV. **Temporary and Preliminary Notices in force.**
-
-

© Commonwealth of Australia 2023

This work is copyright. Apart from any use permitted under the Copyright Act 1968, no part may be reproduced by any process, adapted, communicated or commercially exploited without prior written permission from The Commonwealth represented by the Australian Hydrographic Office.

IMPORTANT NOTICE

This edition of Notices to Mariners includes all significant information affecting AHO products which the AHO has become aware of since the last edition. All reasonable efforts have been made to ensure the accuracy and completeness of the information, including third party information, on which these updates are based. The AHO regards third parties from which it receives information as reliable, however the AHO cannot verify all such information and errors may therefore exist. The AHO does not accept liability for errors in third party information.

GENERAL INSTRUCTIONS

The substance of these notices should be inserted on the charts affected.

Bearings are referred to the true compass and are reckoned clockwise from North; those relating to lights are given as seen by an observer from seaward.

Positions quoted in notices relate to WGS84 which is the horizontal datum for all charts produced by the Australian Hydrographic Office.

The range quoted for a light is its nominal range.

Depths are with reference to the chart datum of each chart. Heights are above mean high water springs or mean higher high water, as appropriate.

The capital letter (P) or (T) after the number of any notice denotes a preliminary or temporary notice respectively, which are contained separately at the end of the permanent notices.

REPORTING OF DANGERS

Mariners are particularly requested to notify the AUSTRALIAN HYDROGRAPHIC OFFICE, Locked Bag 8801 Wollongong, NSW 2500 (e-mail datacentre@hydro.gov.au or, alternatively by filling in and submitting the [Hydrographic Notes](#) forms located on the web site – www.hydro.gov.au), immediately on the discovery of new dangers or suspected dangers to navigation. For changes or defects in aids to navigation notify AusSAR (Fax 02-6230 6868 or email rccaus@amsa.gov.au).

AUTHORISED USE

Copies of Australian notices are available free of charge from the Australian Hydrographic Office (AHO) website (www.hydro.gov.au) and through the eNotices (email) service (www.hydro.gov.au/enotices/enotices.htm).

Individual Notices may be copied for the purpose of inserting Notice substance on official charts and publications. Paper copies may be printed by chart agents and distributed to customers on a cost recovery basis. Participating chart agents are listed on the AHO website as providing a 'Paper Notices to Mariners' service (www.hydro.gov.au/webapps/jsp/agents/agents-list.jsp). Copies of the notices may not be sold for profit without prior written agreement.

NUMERICAL INDEX OF NOTICES TO MARINERS

Edition No 20

Notices	Aus Chart, INT Chart, ENC Cell, AHP, BA Pubs
843	Aus 200
844	Aus 209
845	Summer time
846	Aus 812, 813
847	Aus 204, 809
848	Aus 262
849	Aus 236
850	Aus 236, 814
851	PNG 516
852	Aus 314, 317, 319, 320, 322, 4603, 4722, INT 603, 722
853	Aus 171, 766, 796, 797
854	Aus 177, 792
855(T)	Aus 200
856(T)	Aus 245, 819, 820
857(T)	Aus 294, 296, 301, 700, 842
858(T)	Aus 328
859(T)	Aus 319, 320, 322
860(T)	Aus 357, 487
861(T)	Aus 57, 59
862(T)	Aus 84, 753, 754, 4708, 4709, INT 708, 709
863(T)	Aus 753, 754, 4708, 4709, INT 708, 709
864(T)	Aus 328, 743, 744
865(T)	Aus 64, 743
866(T)	Aus 328, 329, 743, 744
867(T)	Aus 4708, 4723, INT 708, 723
868(T)	Aus 130
869(T)	Aus 181
870(T)	Aus 349
871(T)	Aus 143
872(T)	Aus 143, 155
873(T)	Aus 144
874(T)	Aus 801, 802
875(T)	Aus 151
876(T)	Aus 177, 792
877(T)	Aus 171
878(T)	SLB 101, 201
879(T)	SLB 101

NUMERICAL INDEX OF CHARTS AFFECTED

Edition No 20

Aus Chart	Notices
Aus 57	861(T)
Aus 59	861(T)
Aus 64	865(T)
Aus 84	862(T)
Aus 130	868(T)
Aus 143	871(T), 872(T)
Aus 144	873(T)
Aus 151	875(T)
Aus 155	872(T)
Aus 171	853, 877(T)
Aus 177	854, 876(T)
Aus 181	869(T)
Aus 200	843, 855(T)
Aus 204	847
Aus 209	844
Aus 236	849, 850
Aus 245	856(T)
Aus 262	848
Aus 294	857(T)
Aus 296	857(T)
Aus 301	857(T)
Aus 314	852
Aus 317	852
Aus 319	852, 859(T)
Aus 320	852, 859(T)
Aus 322	852, 859(T)
Aus 328	858(T), 864(T), 866(T)
Aus 329	866(T)
Aus 349	870(T)
Aus 357	860(T)
Aus 487	860(T)
Aus 700	857(T)
Aus 743	864(T), 865(T), 866(T)
Aus 744	864(T), 866(T)
Aus 753	862(T), 863(T)
Aus 754	862(T), 863(T)
Aus 766	853
Aus 792	854, 876(T)
Aus 796	853
Aus 797	853
Aus 801	874(T)
Aus 802	874(T)
Aus 809	847
Aus 812	846
Aus 813	846
Aus 814	850
Aus 819	856(T)
Aus 820	856(T)
Aus 842	857(T)
Aus 4603	852
Aus 4708	862(T), 863(T), 867(T)
Aus 4709	862(T), 863(T)
Aus 4722	852
Aus 4723	867(T)

Aus Chart	Notices
PNG 516	851
SLB 101	878(T), 879(T)
SLB 201	878(T)

INT Chart	Notices
INT 603	852
INT 708	862(T), 863(T), 867(T)
INT 709	862(T), 863(T)
INT 722	852
INT 723	867(T)

843 AUSTRALIA - Products - New Charts, New Editions, Withdrawn Charts

Australian Hydrographic Office

New Charts

<i>Chart</i>	<i>Title and Geographical limits</i>	<i>Scale</i>	<i>Publication Date</i>	<i>Remarks</i>
NIL				

New Electronic Navigation Chart (Aus ENC)

<i>Cell Name</i>	<i>Title</i>	<i>Publication Date</i>	<i>Remarks</i>
NIL			

New Editions and Withdrawn Charts

<i>Chart</i>	<i>Title</i>	<i>Scale</i>	<i>Publication Date</i>	<i>Remarks</i>
Aus 200 (Edition 4)	Australia - East Coast - New South Wales - Port Jackson Inset: Parramatta River	1:25 000 1:25 000	29 September 2023	New edition with general updating throughout; including new bathymetric data. Chart Aus 200 Edition 3 dated 28 May 2021 is now superseded and must be withdrawn from use.

Chart permanently withdrawn

Charts listed above as withdrawn no longer meet chart carriage requirements and should be marked as "superseded" and replaced with the new chart/ new edition listed prior to passage through the area covered by the new chart.

When placing orders with a chart agent between notice of forthcoming edition and its publication, mariners should advise whether their order pertains to the current edition or the new edition.

For further details refer to the AHO website at www.hydro.gov.au for new edition and new chart stock arrival information.

844 AUSTRALIA - Products - New Charts and New Editions to be published shortly

Australian Hydrographic Office

New Charts to be published shortly

<i>Chart</i>	<i>Title</i>	<i>Scale</i>	<i>Remarks</i>
NIL			

New Editions to be published shortly

<i>Chart</i>	<i>Title</i>	<i>Scale</i>	<i>Remarks</i>
Aus 209	Australia - East Coast - New South Wales - Port Stephens	1:25 000	New edition with general updating throughout; including updates to nav aids.

845 AUSTRALIA - Summer time

Australian Government

Clocks will be wound forward one hour at 0200 local time on 1 OCT 2023 in the Australian Capital Territory, New South Wales, South Australia, Victoria and Tasmania.

No changes will be made in Queensland, Northern Territory and Western Australia.

846 AUSTRALIA - NEW SOUTH WALES - Brooms Head - Fish aggregating device eastwards

NSW Department of Primary Industries

Aus 812 [736/2023]

Move	light buoy	29° 36'.6 S	153° 29'.1 E
	to	29° 36'.76 S	153° 29'.19 E

Aus 813 [737/2023]

Insert	special conical light buoy, <i>Fl. Y. 5s FAD (Sep-Jun)</i> , without topmark	29° 36'.76 S	153° 29'.19 E
--------	--	--------------	---------------

847 AUSTRALIA - NEW SOUTH WALES - Terrigal - Artificial reef eastwards*Former Notice - 662(T)/2023 is cancelled*

NSW Department of Primary Industries

Aus 204 [922/2022]

Insert	fish haven with minimum depth, <i>35m</i> , centred on	33° 27'.59 S	151° 30'.43 E
--------	--	--------------	---------------

Aus 809 [221/2023]

Insert	fish haven with minimum depth, <i>35m</i> , centred on	33° 27'.59 S	151° 30'.37 E
--------	--	--------------	---------------

848 AUSTRALIA - QUEENSLAND - Cairns - Trinity Inlet - Smiths Creek - Infrastructure; nav aids

Maritime Safety Queensland Notice 354/2023

Aus 262 (Trinity Inlet) [424/2023]

Insert	accompanying block	16° 56'.90 S	145° 46'.32 E
--------	--------------------	--------------	---------------

849 AUSTRALIA - QUEENSLAND - Moreton Bay - East Channel - Depths

Maritime Safety Queensland

Aus 236 [692/2023]

Insert	contour, between	27° 10'.03 S	153° 21'.51 E
		27° 10'.24 S	153° 21'.36 E
		27° 10'.25 S	153° 21'.18 E
		27° 10'.38 S	153° 21'.18 E
		27° 10'.48 S	153° 21'.13 E

Replace	depth, <i>20₂m</i> , with depth, <i>19₇m</i> , and extend contour E to enclose	27° 10'.1 S	153° 20'.8 E
---------	--	-------------	--------------

Delete	contour, between	27° 10'.0 S	153° 21'.5 E
		27° 10'.5 S	153° 21'.1 E

850 AUSTRALIA - QUEENSLAND - Point Lookout - Light

Australian Maritime Safety Authority

Aus 236 [849/2023]

Insert	light sector, <i>W 150° - 323° (173°)</i> , emanating from light	27° 25'.90 S	153° 32'.42 E
--------	--	--------------	---------------

Aus 814 [737/2023]

Insert	light sectors emanating from light; <i>W 150° - 323° (173°)</i> <i>Obscd 323° - 347° (024°)</i> <i>W 347° - 022° (035°)</i>	27° 25'.90 S	153° 32'.42 E
--------	--	--------------	---------------

Delete	light sector and legend, Obscd, emanating from light	27° 25'.9 S	153° 32'.4 E
--------	--	-------------	--------------

851 PAPUA NEW GUINEA - Lusancay Islands - Reef delineation; depths

Fugro LADS

PNG 516 [931/2022]

Insert	accompanying block	8° 21'.0 S	150° 06'.0 E
	accompanying ZOC diagram	8° 45'.8 S	150° 23'.9 E

852 AUSTRALIA - TIMOR SEA - Pasco Passage - Cartier Island - Nomenclature; legends; chart notes; unexploded ordnance

Australian Hydrographic Office

Note: position of existing chart notes may vary on certain charts.

Aus 314 [747/2023]

Insert	magenta dashed circle with radius 5M, with legend <i>Unexploded Ordnance</i> (see Note), centred on	12° 31'.79 S	123° 33'.29 E
--------	---	--------------	---------------

Replace	chart note, TRADITIONAL FISHING (MOU), with accompanying chart note	12° 38'.0 S	125° 58'.0 E
---------	---	-------------	--------------

Amend	name to <i>Cartier Island</i>	11° 09'.7 S	125° 46'.4 E
	name to <i>Cartier Island</i>	12° 32'.3 S	123° 36'.7 E

Delete	legend, Former Bombing Area (see Note), centred on	12° 36'.5 S	123° 32'.6 E
	chart note, FORMER BOMBING AREA	12° 39'.5 S	125° 47'.5 E
	chart note, ENTRY PROHIBITED	12° 43'.0 S	125° 58'.0 E

Aus 317 [44/2021]

Replace	chart note, TRADITIONAL FISHING (MOU), with accompanying chart note	10° 54'.5 S	120° 20'.5 E
---------	---	-------------	--------------

Aus 319 [555/2023]

Insert	magenta dashed circle with radius 5M, with legend <i>Unexploded Ordnance</i> (see Note), centred on	12° 31'.79 S	123° 33'.29 E
--------	---	--------------	---------------

Replace	chart note, TRADITIONAL FISHING (MOU), with accompanying chart note	13° 12'.5 S	123° 12'.0 E
---------	---	-------------	--------------

Delete	legend, Former Bombing Area (see Note), centred on	12° 36'.5 S	123° 32'.6 E
	chart note, ENTRY PROHIBITED	13° 17'.0 S	123° 12'.0 E
	chart note, FORMER BOMBING AREA	13° 25'.5 S	123° 12'.0 E

Aus 320 [748/2023]

Replace	chart note, TRADITIONAL FISHING (MOU), with accompanying chart note	15° 31'.0 S	125° 36'.0 E
---------	---	-------------	--------------

Aus 322 [555/2023]

Replace	chart note, TRADITIONAL FISHING (MOU), with accompanying chart note	12° 51'.0 S	121° 15'.0 E
---------	---	-------------	--------------

Aus 4603 (INT 603) [647/2023]

Replace	chart note, TRADITIONAL FISHING (MOU), with accompanying chart note	19° 56'.0 S	126° 30'.0 E
---------	---	-------------	--------------

Amend	name to <i>Cartier Island</i>	12° 32'.0 S	123° 17'.0 E
-------	-------------------------------	-------------	--------------

Aus 4722 (INT 722) [651/2023]

Replace	chart note, TRADITIONAL FISHING (MOU), with accompanying chart note	19° 28'.0 S	124° 20'.0 E
---------	---	-------------	--------------

Amend	name to <i>Cartier Island</i>	12° 32'.5 S	123° 25'.0 E
-------	-------------------------------	-------------	--------------

Delete	entry prohibited area with legend, Entry Prohibited (see Note), centred on	12° 32'.0 S	123° 33'.5 E
	chart note, ENTRY PROHIBITED	19° 37'.0 S	125° 14'.0 E

853 AUSTRALIA - TASMANIA - Betsey Island to Cape Tourville - Fish aggregating devices
 Marine and Safety Tasmania Notice M345(T)/2023

Aus 171 [656/2023]

Insert	special conical light buoy, <i>Fl. Y. 3s FAD</i> , without topmark	42° 53'.45 S	147° 38'.15 E
	special conical light buoy, <i>Fl. Y. 3s FAD</i> , without topmark	42° 56'.71 S	147° 43'.91 E
	special conical light buoy, <i>Fl. Y. 3s FAD</i> , without topmark	42° 59'.37 S	147° 33'.71 E
	special conical light buoy, <i>Fl. Y. 3s FAD</i> , without topmark	43° 04'.56 S	147° 28'.65 E

Aus 766 [871/2022]

Insert	special conical light buoy, <i>Fl. Y. 3s FAD</i> , without topmark	42° 17'.70 S	148° 02'.38 E
Delete	light buoy	42° 13'.1 S	148° 29'.3 E

Aus 796 [805/2023]

Insert	special conical light buoy, <i>Fl. Y. 3s FAD</i> , without topmark	42° 50'.67 S	147° 56'.03 E
	special conical light buoy, <i>Fl. Y. 3s FAD</i> , without topmark	42° 53'.45 S	147° 38'.15 E
	special conical light buoy, <i>Fl. Y. 3s FAD</i> , without topmark	42° 56'.71 S	147° 43'.91 E
	special conical light buoy, <i>Fl. Y. 3s FAD</i> , without topmark	42° 59'.37 S	147° 33'.71 E
	special conical light buoy, <i>Fl. Y. 3s FAD</i> , without topmark	43° 04'.56 S	147° 28'.65 E
Move	light buoy	43° 05'.5 S	148° 01'.8 E
	to	43° 05'.32 S	148° 01'.63 E

Aus 797 [871/2022]

Insert	special conical light buoy, <i>Fl. Y. 3s FAD</i> , without topmark	42° 50'.67 S	147° 56'.03 E
Move	light buoy	43° 05'.5 S	148° 01'.8 E
	to	43° 05'.32 S	148° 01'.63 E

854 AUSTRALIA - TASMANIA - Macquarie Harbour - Scientific instrument
 Marine and Safety Tasmania

Aus 177 [485/2022]

Delete	depth, 15m, and enclosing danger circle and legend ODAS	42° 20'.8 S	145° 25'.2 E
--------	---	-------------	--------------

Aus 792 [703/2020]

Delete	depth, 15m, and enclosing danger circle and legend ODAS	42° 20'.8 S	145° 25'.2 E
--------	---	-------------	--------------

855(T)/2023 AUSTRALIA - NEW SOUTH WALES - Port Jackson - Balls Head - Drilling operations
Port Authority of New South Wales Notice 19/2023

Barge *Sealift 3* will be conducting drilling operations in an area bounded by the following positions:

33° 50'.66 S 151° 11'.36 E
33° 50'.78 S 151° 11'.58 E
33° 50'.66 S 151° 11'.58 E
33° 50'.57 S 151° 11'.39 E.

A 10m exclusion zone, marked by special light buoys, exists around the barge.

Mariners are advised to navigate with caution in the area.

Chart temporarily affected - Aus 200

856(T)/2023 AUSTRALIA - QUEENSLAND - Fishermans Landing Wharves to Douglas Shoal - Dredging operations completed

Former Notice - 755(T)/2023 is cancelled
Maritime Safety Queensland

Cancel this notice on receipt.

Chart formerly affected - Aus 245 - Aus 819 - Aus 820

857(T)/2023 AUSTRALIA - TORRES STRAIT - Cook Reef - Scientific instruments southwards

Fugro

Subsurface scientific instruments which may be marked by special light buoys, *Fl.2.5s* or *Fl.3s*, exist in an area bounded by the following positions:

10° 32'.64 S 141° 11'.52 E
10° 44'.20 S 141° 18'.04 E
10° 44'.20 S 141° 30'.39 E
10° 32'.55 S 141° 30'.39 E
10° 32'.55 S 141° 38'.00 E
10° 42'.71 S 141° 38'.00 E
10° 34'.52 S 141° 49'.31 E
10° 31'.11 S 141° 49'.31 E
10° 21'.16 S 141° 28'.59 E
10° 20'.52 S 141° 11'.50 E.

Mariners are advised to navigate with caution in the area.

Chart temporarily affected - Aus 294 - Aus 296 - Aus 301 - Aus 700 - Aus 842

858(T)/2023 AUSTRALIA - WESTERN AUSTRALIA - Barrow Island - Subsea operations complete

Former Notice - 534(T)/2023 is cancelled
MV Pride

Cancel this notice on receipt.

Chart formerly affected - Aus 328

859(T)/2023 AUSTRALIA - WESTERN AUSTRALIA - Browse Island - Subsea operations

McDermott Australia

Vessel *LV108* is conducting subsea operations in an area bounded by the following positions:

14° 00'.0 S 123° 05'.0 E
14° 00'.0 S 123° 20'.0 E
13° 44'.0 S 123° 20'.0 E
13° 44'.0 S 123° 05'.0 E.

Mariners are advised to navigate with caution in the area. 2.5M clearance requested.

Chart temporarily affected - Aus 319 - Aus 320 - Aus 322

860(T)/2023 AUSTRALIA - WESTERN AUSTRALIA - Cape Conran - Subsea operations southwards

Cooper Energy

On or about 6 October 2023, vessel *Helix Q7000* and support vessels *Pacific Gannet* and *MMA Vigilant* will be conducting subsea operations associated with the decommissioning of the wells Manta (38° 16'.65 S 148° 42'.98 E), Basker (38° 17'.98 S 148° 42'.42 E) and Basker 6 (38° 19'.22 S 148° 43'.97 E).

Vessel *MMA Vigilant* and a ROV will be conducting inspection and maintenance operations of the wells Baleen (38° 00'.26 S 148° 26'.65 E) and Patricia (38° 01'.57 S 148° 27'.04 E) opportunistically during the decommissioning operations.

Mariners are advised to navigate with caution in the area. 0.27M clearance requested.

Chart temporarily affected - Aus 357 - Aus 487

861(T)/2023 AUSTRALIA - WESTERN AUSTRALIA - Dampier - Scientific instruments recovered

Former Notice - 574(T)/2023 is cancelled

Pilbara Ports Authority

Cancel this notice on receipt.

Chart formerly affected - Aus 57 - Aus 59

862(T)/2023 AUSTRALIA - WESTERN AUSTRALIA - Jurien to Hilarys Boat Harbour - Survey operations westwards completed

Former Notice - 825(T)/2023 is cancelled

Blue Ocean Marine Tech Systems

Cancel this notice on receipt.

Chart formerly affected - Aus 84 - Aus 753 - Aus 754 - Aus 4708 (INT 708) - Aus 4709 (INT 709)

863(T)/2023 AUSTRALIA - WESTERN AUSTRALIA - Ledge Point - Survey operations westwards completed

Former Notice - 772(T)/2023 is cancelled

Ocius Technology

Cancel this notice on receipt.

Chart formerly affected - Aus 753 - Aus 754 - Aus 4708 (INT 708) - Aus 4709 (INT 709)

864(T)/2023 AUSTRALIA - WESTERN AUSTRALIA - Thevenard Island - Scientific instrument northwestwards

Fugro

A special light buoy, *Fl(5)Y.20s*, exists in position 21° 11'.58 S 114° 40'.08 E.

Chart temporarily affected - Aus 328 - Aus 743 - Aus 744

865(T)/2023 AUSTRALIA - WESTERN AUSTRALIA - Thevenard Island - Mooring buoys removed

Former Notice - 720(T)/2023 is cancelled

Department of Transport WA

Cancel this notice on receipt.

Chart formerly affected - Aus 64 - Aus 743

866(T)/2023 AUSTRALIA - WESTERN AUSTRALIA - Thevenard Island to Muiron Islands - Removal works northwestwards

Woodside Energy Ltd , Technip FMC

Vessel *Aegir* and support vessels are conducting works to remove the Nganhurra riser turret mooring (RTM) (21° 28'.89 S 114° 00'.49 E) and the Griffin RTM (21° 13'.40 S 114° 38'.70 E).

Lifting of the Nganhurra RTM onto a barge may occur at the location of the RTM or in an area bounded by the following positions:

21° 31'.22 S 114° 25'.54 E

21° 32'.01 S 114° 32'.89 E

21° 29'.94 S 114° 40'.09 E

21° 24'.92 S 114° 40'.08 E.

A 500m exclusion zone exists around the vessel.

Chart temporarily affected - Aus 328 - Aus 329 - Aus 743 - Aus 744

867(T)/2023 INDIAN OCEAN - Roo Rise - Light buoy off station

Australian Bureau of Meteorology

The special light buoy, *Fl. Y. 2s* (12° 19'.20 S 108° 30'.75 E), is off station.

Chart temporarily affected - Aus 4708 (INT 708) - Aus 4723 (INT 723)

868(T)/2023 AUSTRALIA - SOUTH AUSTRALIA - Port Adelaide - Dredging operations completed

Former Notice - 297(T)/2023 is cancelled

Department for Infrastructure and Transport SA

Cancel this notice on receipt.

Chart formerly affected - Aus 130

869(T)/2023 AUSTRALIA - VICTORIA - Port Albert - Nav aids withdrawn; buoys charted

Former Notice - 995(P)/2021 is cancelled

Gippsland Ports Notice 199/2022

Cancel this notice on receipt.

Chart formerly affected - Aus 181

870(T)/2023 AUSTRALIA - VICTORIA - Port Campbell - Subsea operations southwards completed

Former Notice - 726(T)/2023 is cancelled

Beach Energy Limited

Cancel this notice on receipt.

Chart formerly affected - Aus 349

871(T)/2023 AUSTRALIA - VICTORIA - Port Phillip - Mornington - Light beacon removed

Former Notice - 835(T)/2023 is cancelled

Parks Victoria Notice 427(T)/2021, 376/2023

The west cardinal light beacon, *VQ(9)10s* (38° 13'.42 S 145° 01'.58 E), has been removed; a west cardinal light buoy, *VQ(9)10s*, exists in situ.

Chart temporarily affected - Aus 143

872(T)/2023 AUSTRALIA - VICTORIA - Port Phillip - Werribee South - Drill rig eastwards

Former Notice - 636(T)/2023 is cancelled
Ports Victoria Notice 375(T)/2023

Cancel this notice on receipt.

Chart formerly affected - Aus 143 - Aus 155**873(T)/2023 AUSTRALIA - VICTORIA - Port Phillip - Police Point - Buoy off station**

Parks Victoria Notice 372(T)/2023

The special buoy (38° 18'.91 S 144° 42'.37 E) is off station.

Chart temporarily affected - Aus 144**874(T)/2023 AUSTRALIA - VICTORIA - Waratah Bay - Survey operations**

Safe Transport Victoria Notice 381(T)/2023

Unmanned surface vehicle (USV), *X14 unmanned*, is conducting survey operations in an area bounded by the coast and the following positions:

38° 48'.74 S 146° 03'.80 E

38° 52'.85 S 146° 02'.98 E

38° 53'.42 S 146° 06'.42 E

38° 49'.34 S 146° 06'.02 E

The USV is black and yellow and lit with a white light.

Mariners are advised to navigate with caution in the area.

Chart temporarily affected - Aus 801 - Aus 802**875(T)/2023 AUSTRALIA - VICTORIA - Western Port - Watson Inlet - Beacon restored**

Former Notice - 778(T)/2023 is cancelled
Parks Victoria Notice 371/2023

Cancel this notice on receipt.

Chart formerly affected - Aus 151**876(T)/2023 AUSTRALIA - TASMANIA - Macquarie Harbour - Scientific instruments**

Marine and Safety Tasmania Notice M338(T)/2023

Scientific instruments, 10m below the surface, exist in positions 42° 18'.49 S 145° 23'.01 E and 42° 20'.80 S 145° 25'.22 E.

Chart temporarily affected - Aus 177 - Aus 792**877(T)/2023 AUSTRALIA - TASMANIA - River Derwent - Bellerive - Light buoy relit**

Former Notice - 783(T)/2023 is cancelled
Marine and Safety Tasmania Notice M346(T)/2023

Cancel this notice on receipt.

Chart formerly affected - Aus 171

878(T)/2023 SOLOMON ISLANDS - Honiara - Wrecks

Aero Asahi Corporation

Wrecks exist as follows:

<i>Position</i>	<i>Remarks</i>
9° 25'.38 S 159° 55'.62 E	least depth, 5.1m
9° 25'.56 S 159° 57'.18 E	least depth, 1.3m
9° 25'.68 S 159° 57'.28 E	least depth, 10.7m
9° 25'.70 S 159° 57'.38 E	least depth, 6m
9° 25'.71 S 159° 58'.67 E	least depth, 25.5m.

Chart temporarily affected - SLB 101 - SLB 201**879(T)/2023 SOLOMON ISLANDS - Honiara - Light buoy restored***Former Notice - 788(T)/2023 is cancelled*

Solomon Islands Maritime Authority Notice 17/2023

Cancel this notice on receipt.

Chart formerly affected - SLB 101

II

HYDROGRAPHIC REPORTS

NIL

To accompany Australian Notice to Mariners 852/2023

TRADITIONAL FISHING (MOU)

A Memorandum of Understanding between Australia and Indonesia applies to the operations of Indonesian traditional fishermen in the area adjacent to Ashmore Reef, Cartier Island, Browse Island, Seringapatam Reef and Scott Reef. For details see Mariners Handbook for Australian Waters AHP 20.

Note for chart Aus 314

To accompany Australian Notice to Mariners 852/2023

TRADITIONAL FISHING (MOU)

A Memorandum of Understanding between Australia and Indonesia applies to the operations of Indonesian traditional fishermen in the area adjacent to Ashmore Reef, Cartier Island, Browse Island, Seringapatam Reef and Scott Reef. For details see Mariners Handbook for Australian Waters AHP 20.

Note for chart Aus 319

To accompany Australian Notice to Mariners 852/2023

TRADITIONAL FISHING (MOU)

A Memorandum of Understanding between Australia and Indonesia applies to the operations of Indonesian traditional fishermen in the area adjacent to Ashmore Reef, Cartier Island, Browse Island, Seringapatam Reef and Scott Reef. For details see Mariners Handbook for Australian Waters AHP 20.

Note for chart Aus 322

To accompany Australian Notice to Mariners 852/2023

TRADITIONAL FISHING (MOU)

A Memorandum of Understanding between Australia and Indonesia applies to the operations of Indonesian traditional fishermen in the area adjacent to Ashmore Reef, Cartier Island, Browse Island, Seringapatam Reef and Scott Reef. For details see Mariners Handbook for Australian Waters AHP 20.

Note for chart Aus 4722

To accompany Australian Notice to Mariners 852/2023

TRADITIONAL FISHING (MOU)

A Memorandum of Understanding between Australia and Indonesia applies to the operations of Indonesian traditional fishermen in the area adjacent to Ashmore Reef, Cartier Island, Browse Island, Seringapatam Reef and Scott Reef. For details see Mariners Handbook for Australian Waters AHP 20.

Note for chart Aus 317

To accompany Australian Notice to Mariners 852/2023

TRADITIONAL FISHING (MOU)

A Memorandum of Understanding between Australia and Indonesia applies to the operations of Indonesian traditional fishermen in the area adjacent to Ashmore Reef, Cartier Island, Browse Island, Seringapatam Reef and Scott Reef. For details see Mariners Handbook for Australian Waters AHP 20.

Note for chart Aus 320

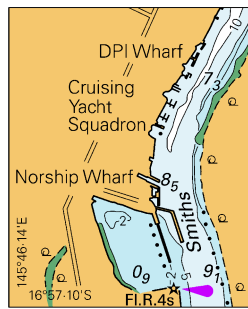
To accompany Australian Notice to Mariners 852/2023

TRADITIONAL FISHING (MOU)

A Memorandum of Understanding between Australia and Indonesia applies to the operations of Indonesian traditional fishermen in the area adjacent to Ashmore Reef, Cartier Island, Browse Island, Seringapatam Reef and Scott Reef. For details see Mariners Handbook for Australian Waters AHP 20.

Note for chart Aus 4603

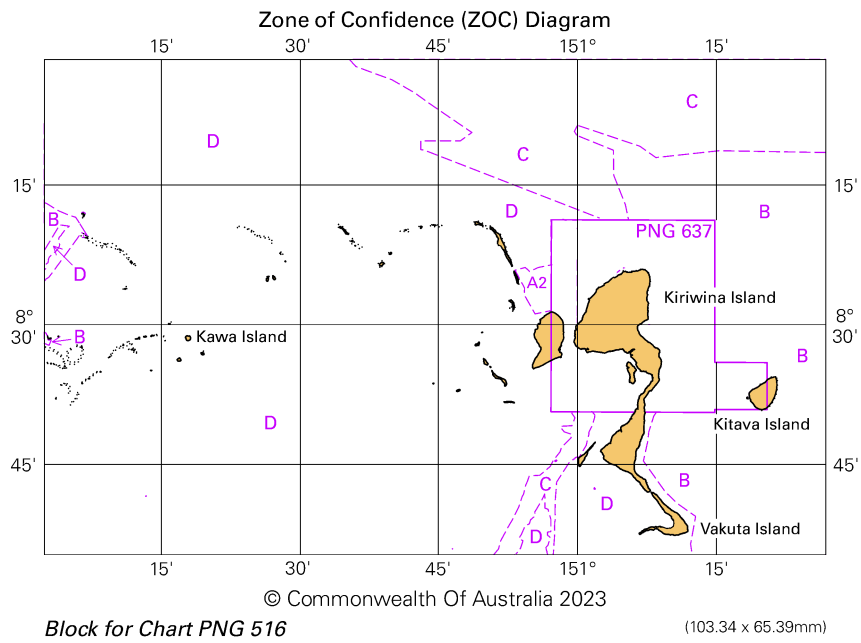
To accompany Australian Notice to Mariners 848/2023

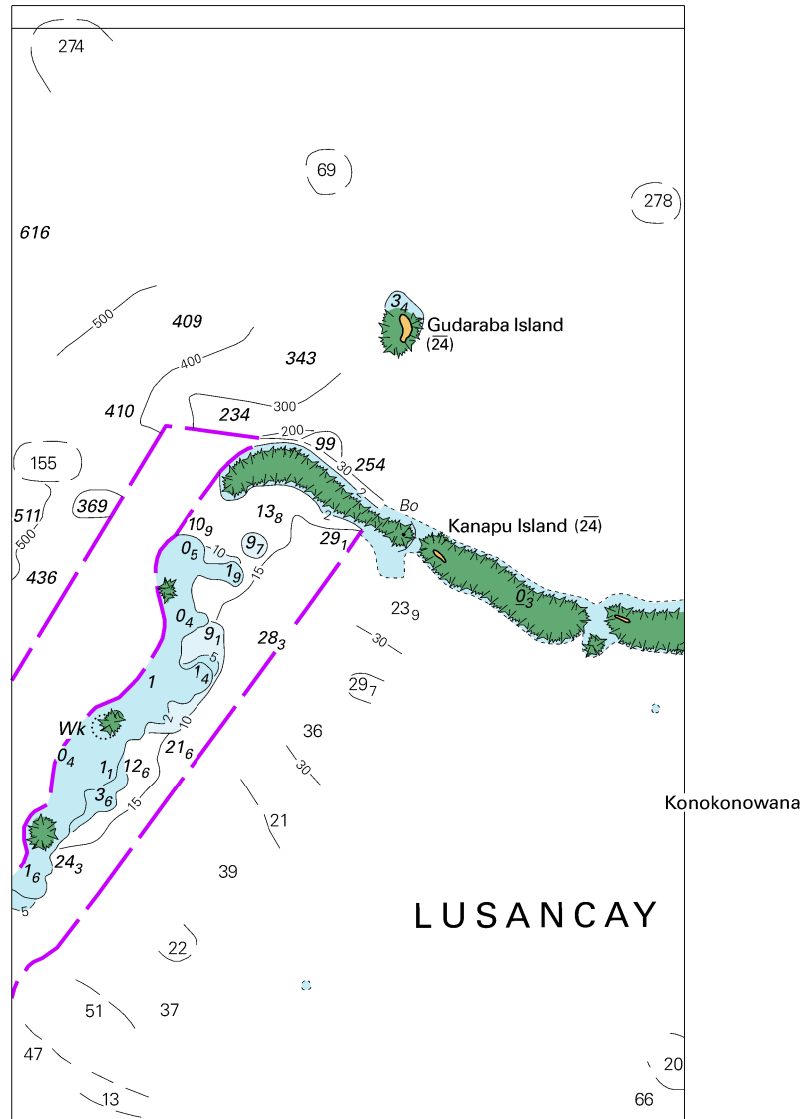


(32.1 x 39.4mm)

Block for Chart Aus 262

© Commonwealth of Australia 2023





© Commonwealth of Australia 2023

Block for chart PNG 516

(88.9 x 147.8mm)