

TEMPORARY AND PRELIMINARY NOTICES
In force on 31 March 2023

NEW SOUTH WALES

709(T)/2016 AUSTRALIA - NEW SOUTH WALES - Cape Byron - Obstructions eastwards
HMAS *Gascoyne*

Obstructions exist in positions 28° 36'.20 S 153° 44'.30 E and 28° 36'.95 S 153° 44'.02 E.

Chart temporarily affected - Aus 813

573(T)/2018 AUSTRALIA - NEW SOUTH WALES - Callo Point - Exclusion zone
NSW Roads and Maritime Services

A wreck exists off Callo Point and an exclusion zone exists bounded by the following positions:

36°36'.20 S 150°02'.45 E
36°36'.23 S 150°04'.13 E
36°37'.80 S 150°02'.58 E
36°37'.81 S 150°01'.32 E.

Mariners are advised to navigate with caution.

Chart temporarily affected - Aus 806

549(T)/2020 AUSTRALIA - NEW SOUTH WALES - Port Kembla - Exclusion zone
Port Authority of New South Wales

A 50m exclusion zone exists around the northern end of berth 206 (34° 28'.26 S 150° 54'.67 E).

Mariners are not to enter the area without obtaining permission from the Harbour Master or VTIC.

Chart temporarily affected - Aus 195

602(T)/2020 AUSTRALIA - NEW SOUTH WALES - Ben Buckler - Scientific instruments southeastwards
Sydney Institute of Marine Science

Subsurface scientific instruments exist as follows:

<i>Position</i>	<i>Metres below surface</i>
33° 53'.74 S 151° 17'.30 E	27
33° 53'.91 S 151° 17'.75 E	41
33° 54'.16 S 151° 18'.18 E	58
33° 54'.42 S 151° 18'.60 E	63
33° 54'.69 S 151° 19'.06 E	64
33° 54'.95 S 151° 19'.52 E	64
33° 55'.21 S 151° 19'.94 E	71
33° 55'.46 S 151° 20'.37 E	70
33° 55'.71 S 151° 20'.79 E	80
33° 55'.98 S 151° 21'.25 E	80
33° 56'.24 S 151° 21'.71 E	82
33° 56'.49 S 151° 22'.16 E	87
33° 56'.75 S 151° 22'.59 E	90
33° 57'.06 S 151° 23'.02 E	98
33° 57'.32 S 151° 23'.47 E	119
33° 57'.84 S 151° 24'.32 E	127
34° 01'.16 S 151° 29'.70 E	145
34° 01'.46 S 151° 30'.18 E	149.

Chart temporarily affected - Aus 200 - Aus 808 - Aus 809

604(T)/2020 AUSTRALIA - NEW SOUTH WALES - Jervis Bay - Hyams Beach - Light buoy
Australian Maritime Warfare Centre

A special light buoy, *Fl.Y.5s*, exists in position 35° 06'.23 S 150° 42'.85 E.

Chart temporarily affected - Aus 807 - Aus 808

997(T)/2020 AUSTRALIA - NEW SOUTH WALES - Merimbula Bay to Broulee Island - Scientific instruments
Transport for NSW

Special light buoys, *Fl(5)Y.20s*, exist in the following positions:

35° 50'.9 S 150° 11'.3 E

35° 52'.8 S 150° 09'.7 E

36° 54'.5 S 149° 55'.0 E.

Chart temporarily affected - Aus 806 - Aus 807

105(T)/2021 AUSTRALIA - NEW SOUTH WALES - Port Jackson - Berrys Bay - Jetties ruined
Transport for NSW , NSW Roads and Maritime Services

Jetties and piers are ruined, and partially submerged obstructions may exist in an area bounded by the coast and the following positions:

33° 50'.70 S 151° 11'.69 E

33° 50'.70 S 151° 11'.76 E

33° 50'.67 S 151° 11'.85 E

33° 50'.63 S 151° 11'.84 E.

A west cardinal light beacon, *Q(9)15s*, exists in position 33° 50'.59 S 151° 11'.50 E.

Mariners are advised to navigate with caution in the area.

Chart temporarily affected - Aus 200

438(T)/2021 AUSTRALIA - TASMAN SEA - Tasman Basin - Light buoy off station
Australian Bureau of Meteorology

The special light buoy, *Fl.Y.2s* (44° 47'.0 S 161° 42'.0 E), is off station.

Chart temporarily affected - Aus 4601 (INT 601)

594(T)/2021 AUSTRALIA - NEW SOUTH WALES - Port Kembla - Harbour works
Port Authority of New South Wales Notice 02/2021, 03/2021

Works associated with the construction of the LNG import facility are in progress at berth 101 (34° 27'.53 S 150° 53'.85 E).

A silt curtain, marked by special light buoys, has been established around the works in the following positions:

<i>Position</i>	<i>Remarks</i>
34° 27'.47 S 150° 53'.84 E	
34° 27'.48 S 150° 53'.83 E	special light buoy, Q.Y
34° 27'.49 S 150° 53'.81 E	
34° 27'.50 S 150° 53'.81 E	special light buoy, Q.Y
34° 27'.53 S 150° 53'.82 E	special light buoy, Q.Y
34° 27'.56 S 150° 53'.82 E	special light buoy, Q.Y
34° 27'.57 S 150° 53'.82 E	
34° 27'.60 S 150° 53'.83 E	special light buoy, Q.Y
34° 27'.61 S 150° 53'.87 E	special light buoy, Q.Y
34° 27'.62 S 150° 53'.89 E.	

Mariners are advised to navigate with caution in the area.

Chart temporarily affected - Aus 195

880(T)/2021 AUSTRALIA - NEW SOUTH WALES - Cape Byron - Light buoy off station northwards
Byron Bay Deep Sea Fishing Club

The special light buoy, *Fl.Y.5s* (28° 35'.40 S 153° 38'.11 E), is off station.

Chart temporarily affected - Aus 813

61(T)/2022 AUSTRALIA - NEW SOUTH WALES - Port Jackson - Chowder Bay - Scientific instruments

Former Notice - 524(T)/2021 is cancelled
Department of Defence

Subsurface scientific instruments, 2m above seabed, exist in the following positions:

33° 50.42' S 151° 15.42' E

33° 50.39' S 151° 15.39' E

33° 50.38' S 151° 15.43' E.

The area will be marked by buoys.

Mariners are advised to navigate with caution in the area.

Chart temporarily affected - Aus 200

202(T)/2022 AUSTRALIA - NEW SOUTH WALES - Kiama - Fish aggregating device off station eastwards

Department of Primary Industries - Fisheries

The special light buoy, *Fl.Y.5s FAD (Oct-May)* (34° 41'.0 S 150° 59'.5 E), is off station and in position 34° 41'.78 S 150° 59'.25 E.

Chart temporarily affected - Aus 808

203(T)/2022 AUSTRALIA - NEW SOUTH WALES - Twofold Bay - Eden - Snug Cove - Harbour works; exclusion zone

Port Authority of New South Wales Notice 122/2022

Works associated with the construction of a wave attenuator are in progress. An exclusion zone marked by special light buoys, *Fl.Y.3s*, exists in an area bounded by the following positions:

37° 04'.37 S 149° 54'.41 E

37° 04'.37 S 149° 54'.39 E

37° 04'.37 S 149° 54'.36 E

37° 04'.39 S 149° 54'.32 E

37° 04'.41 S 149° 54'.27 E

37° 04'.43 S 149° 54'.22 E

37° 04'.45 S 149° 54'.18 E

37° 04'.43 S 149° 54'.15 E

37° 04'.40 S 149° 54'.12 E

37° 04'.37 S 149° 54'.09 E

37° 04'.33 S 149° 54'.16 E

37° 04'.29 S 149° 54'.22 E

37° 04'.33 S 149° 54'.27 E

37° 04'.31 S 149° 54'.33 E

37° 04'.31 S 149° 54'.38 E

37° 04'.35 S 149° 54'.42 E.

Mariners are advised to navigate with caution in the area.

Chart temporarily affected - Aus 192

228(T)/2022 AUSTRALIA - NEW SOUTH WALES - Botany Bay - Port Botany - Light beacon destroyed

Port Authority of New South Wales Notice 14/2022

The east cardinal light beacon, *Q(3)10s* (33° 58'.37 S 151° 11'.76 E), has been destroyed; a light buoy, *Q*, exists in situ.

Chart temporarily affected - Aus 198

229(P)/2022 AUSTRALIA - NEW SOUTH WALES - Clarence River - Shoaling

Port Authority of New South Wales

Latest survey indicates shoaler depths than those charted may exist in the entrance to Clarence River.

The most significant shoal being depth, *4.8m*, in position 29° 25'.67 S 153° 22'.75 E.

Mariners are advised to navigate with caution in the area.

Charts will be updated in due course.

Chart which will be affected - Aus 222 - Aus 812 - Aus 813

231(T)/2022 AUSTRALIA - TASMAN SEA - Tasman Basin - Light buoy off station

Former Notice - 117(T)/2022 is cancelled

Australian Bureau of Meteorology

The special light buoy, *Fl.Y.2s* (46° 57'.4 S 160° 20'.6 E), is off station.

Chart temporarily affected - Aus 4601 (INT 601)

272(T)/2022 AUSTRALIA - NEW SOUTH WALES - Narooma - Fish aggregating device off station eastwards

Department of Primary Industries - Fisheries

The special light buoy, *Fl.Y.5s (Nov-May)* (36° 13'.17 S 150° 17'.45 E), is off station and in position 36° 14'.94 S 150° 17'.65 E.

Chart temporarily affected - Aus 806 - Aus 807

528(T)/2022 AUSTRALIA - NEW SOUTH WALES - Kingscliff - Harbour works

Harcam Marine

On or about 20 July 2022, works associated with the installation of a pipeline will begin in an area bounded by the following positions:

28° 15'.09 S 153° 34'.44 E

28° 15'.24 S 153° 34'.60 E

28° 14'.79 S 153° 35'.22 E

28° 14'.63 S 153° 35'.03 E.

A barge will be on site and the towing of a pipeline will occur from the beach to the barge.

Mariners are advised to navigate with caution in the area.

Chart temporarily affected - Aus 813 - Aus 814

727(T)/2022 AUSTRALIA - NEW SOUTH WALES - Tathra to Seal Rocks - Obstructions

Transport for NSW Notice SY2028

Shipping containers and debris may exist along the coast and in offshore waters between Tathra (36° 43'.55 S 149° 59'.46 E) and Seal Rocks (32° 27'.86 S 152° 33'.22 E).

Mariners are advised to navigate with caution in the area.

Chart temporarily affected - Aus 489 - Aus 806 - Aus 807 - Aus 808 - Aus 809 - Aus 810 - Aus 4601 (INT 601) - Aus 4602 (INT 602)

19(T)/2023 AUSTRALIA - NEW SOUTH WALES - Shelley Beach Head to Brooms Head - Light buoy off station eastwards

NSW Department of Primary Industries

The special light buoy, *Fl.Y.5s FAD (Sep-Jun)* (29° 32'.48 S 153° 26'.52 E), is off station and in position 29° 37'.72 S 153° 29'.13 E.

Chart temporarily affected - Aus 812

97(T)/2023 AUSTRALIA - NEW SOUTH WALES - Nine Mile Beach - Drilling operations

John Holland

On or about 8 February 2023, a barge will be conducting drilling operations in an area bounded by the coast and the following positions:

33° 03'.54 S 151° 39'.77 E

33° 03'.54 S 151° 40'.62 E

33° 02'.62 S 151° 41'.29 E

33° 02'.62 S 151° 40'.61 E.

Mariners are advised to navigate with caution in the area.

Chart temporarily affected - Aus 809

132(T)/2023 AUSTRALIA - NEW SOUTH WALES - Coffs Harbour - Light buoy off station northeastwards

NSW Department of Primary Industries

The special light buoy, *Fl.Y.5s (Sep-Jun)* (30° 14'.85 S 153° 21'.61 E), is off station and in position 30° 15'.92 S 153° 21'.18 E.

Chart temporarily affected - Aus 812

133(T)/2023 AUSTRALIA - NEW SOUTH WALES - Crabbes Creek Beach - Wreck eastwards

Australian Maritime Safety Authority

A wreck exists in position 28° 29'.43 S 153° 38'.52 E.

Chart temporarily affected - Aus 813

192(T)/2023 AUSTRALIA - NEW SOUTH WALES - Jervis Bay - Military exercise

Australian Maritime Safety Authority

During the period 13 to 31 March 2023, a military exercise involving the use of AUVs and ASVs will be conducted in an area bounded by the following positions:

35° 10'.8 S 150° 35'.4 E

35° 50'.4 S 150° 40'.2 E

35° 44'.4 S 151° 03'.0 E

35° 30'.0 S 151° 19'.2 E

35° 14'.4 S 151° 28'.2 E

34° 57'.0 S 151° 38'.4 E

34° 57'.0 S 150° 49'.2 E.

Mariners are advised to navigate with caution and keep well clear of the area.

Chart temporarily affected - Aus 489 - Aus 807 - Aus 808 - Aus 4601 (INT 601)

193(T)/2023 AUSTRALIA - NEW SOUTH WALES - Ulladulla - Wreck northeastwards

Transport for NSW

A wreck exists in position 35° 19'.08 S 150° 35'.44 E.

Chart temporarily affected - Aus 807

238(T)/2023 AUSTRALIA - NEW SOUTH WALES - Batemans Bay - Light buoy off station southeastwards

NSW Department of Primary Industries

The special light buoy, *Fl.Y.5s FAD (Oct-May)* (35° 50'.00 S 150° 22'.63 E), is off station and in position 35° 51'.18 S 150° 22'.04 E.

Chart temporarily affected - Aus 807

269(P)/2023 AUSTRALIA - NEW SOUTH WALES - Morna Point to Point Stephens - Shoaling

Office of Environment and Heritage NSW

Latest survey indicates shoaler depths than those charted may exist in an area between Morna Point (32° 47'.09 S 152° 07'.44 E) and Point Stephens (32° 44'.91 S 152° 12'.20 E).

Mariners are advised to navigate with caution in the area.

Charts will be updated in due course.

Chart which will be affected - Aus 209

QUEENSLAND

418(T)/2017 AUSTRALIA - QUEENSLAND - Daydream Island - Lights unlit; light buoys established Maritime Safety Queensland Notice 179(T)/2017

The leading lights, *2F.Bu.5M* (20° 15'.10 S 148° 48'.87 E), are unlit.

A starboard lateral light buoy, *Fl.G.1-3s*, exists in positions 20° 14'.61 S 148° 49'.75 E.

A port lateral light buoy, *Fl.R.1-3s*, exists in positions 20° 14'.67 S 148° 49'.77 E.

Chart temporarily affected - Aus 252 - Aus 253

461(T)/2017 AUSTRALIA - QUEENSLAND - Bowen - Obstruction Maritime Safety Queensland

An obstruction marked by a special light buoy, *Fl.Y.2-5s*, exists in position 20° 01'.40 S 148° 15'.26 E.

Chart temporarily affected - Aus 268

470(T)/2017 AUSTRALIA - QUEENSLAND - North Gardner Bank - Foul ground Maritime Safety Queensland Notice 24/2017

A foul ground exists in position 24° 56'.30 S 153° 26.90 E.

Chart temporarily affected - Aus 816

523(P)/2017 AUSTRALIA - QUEENSLAND - Great Barrier Reef - Joist Reef to Hydrographers Passage - Shoaling LADS Flight

Latest survey shows shoaler depths than those charted may exist in an area bounded by the following positions:

19° 27'.1 S 149° 38'.9 E

20° 12'.2 S 149° 39'.1 E

20° 12'.2 S 150° 18'.5 E

19° 39'.2 S 150° 18'.5 E

Charts will updated in due course.

Chart which will be affected - Aus 821 - Aus 824 - Aus 825

989(P)/2017 AUSTRALIA - CORAL SEA - Portlock Reefs - Reefs LADS Flight

Latest survey shows uncharted reefs exist in area bounded by the following positions:

9° 33'.30 S 144° 46'.00 E

9° 33'.90 S 144° 42'.50 E

9° 36'.60 S 144° 42'.70 E

9° 37'.70 S 144° 45'.50 E.

Mariners are advised to navigate with caution in the area.

Charts will be updated in due course.

Chart which will be affected - Aus 377

27(T)/2018 AUSTRALIA - QUEENSLAND - Brisbane - Redcliffe Jetty - Harbour works Maritime Safety Queensland

Harbour works are in progress at the head of Redcliffe Jetty (27° 13'.567 S 153° 07'.047 E)

All vessels will display appropriate lights and symbols.

Mariners are advised to navigate with caution

Chart temporarily affected - Aus 236

72(T)/2018 AUSTRALIA - QUEENSLAND - Fitzroy Island - Bird Rock - Light buoys

Former Notice - 29(T)/2018 is cancelled

Maritime Safety Queensland Notice 503(T)/2017

Two special light buoys, *Fl. Y. 2·5s* exist in position 16° 55'.43 S 145° 59'.43 E.

Chart temporarily affected - Aus 830

213(T)/2018 AUSTRALIA - QUEENSLAND - Bribie Island - South Point - Shoaling

Maritime Safety Queensland

Shoaling exists at the southern end of Bribie Island, with a least depth of *0.5m* in position 27° 06'.18 S 153° 11'.24 E.

Mariners are advised to navigate with caution in the area.

Chart temporarily affected - Aus 236

215(T)/2018 AUSTRALIA - QUEENSLAND - Hinchinbrook Channel - Oyster Point - Wreck

Maritime Safety Queensland

A stranded wreck marked by a special light buoy, *Fl. Y. 3s*, exists in position 18° 16'.10 S 146° 03'.06 E.

Chart temporarily affected - Aus 259

455(T)/2018 AUSTRALIA - QUEENSLAND - Bundaberg - Burnett River - Light beacon

Maritime Safety Queensland Notice 178(T)/2018

A light beacon, *Fl. G. 4s*, exists in position 24° 45'.26 S 152° 23'.87 E.

Chart temporarily affected - Aus 242

782(P)/2018 AUSTRALIA - QUEENSLAND - Flinders Reef - Shoaling

Maritime Safety Queensland

Latest survey shows shoaler depths than those charted may exist in areas bounded by the following positions:

17° 41'.74 S 148° 35'.82 E
17° 37'.88 S 148° 36'.44 E
17° 32'.09 S 148° 34'.36 E
17° 22'.81 S 148° 25'.78 E
17° 30'.72 S 148° 16'.29 E
17° 43'.51 S 148° 20'.39 E
17° 44'.26 S 148° 27'.71 E.

and:

17° 49'.85 S 148° 23'.54 E
17° 53'.82 S 148° 29'.12 E
17° 53'.16 S 148° 32'.28 E
17° 50'.79 S 148° 33'.13 E
17° 47'.63 S 148° 29'.64 E
17° 45'.93 S 148° 25'.72 E
17° 46'.73 S 148° 23'.97 E.

Mariners are advised to navigate with extreme caution in the area.

Charts will be updated in due course.

Chart which will be affected - Aus 615

393(T)/2019 AUSTRALIA - QUEENSLAND - Weipa - South Channel - Harbour works

Maritime Safety Queensland Notice 167(T)/2019

Harbour works associated with beacon replacement are in progress in the South Channel in an area bounded by the following positions:

12°42'.72 S 141°39'.72 E
12°40'.55 S 141°49'.73 E
12°39'.83 S 141°49'.44 E
12°41'.82 S 141°39'.04 E

Mariners are advised to navigate with caution in the area, and create No Wash in the vicinity of the barges and pile driving operations.

Chart temporarily affected - Aus 4

440(T)/2019 AUSTRALIA - QUEENSLAND - Moreton Bay - Kounungai - Wreck; light buoy
Maritime Safety Queensland Notice 161(T)/2019

A wreck marked by a special light buoy, *Fl. Y. 2-5s*, exists in position 27° 17'.00 S 153° 23'.00 E.

Chart temporarily affected - Aus 236

488(T)/2019 AUSTRALIA - QUEENSLAND - Karumba - Wreck northwards
Maritime Safety Queensland Notice 188(T)/2019

A stranded wreck marked by a special light buoy, *Fl. Y. 2-5s*, exists in position 17° 15'.36 S 140° 53'.89 E.

Chart temporarily affected - Aus 303

494(P)/2019 AUSTRALIA - CORAL SEA - Kenn Reefs and Frederick Reefs - Shoaling
LADS

Latest surveys indicate shoaler depths than those currently charted exist in an area bounded by the following positions:

21° 16'.05 S 155° 42'.52 E
21° 16'.64 S 155° 44'.44 E
21° 13'.83 S 155° 46'.76 E
21° 11'.42 S 155° 45'.73 E.
and
21° 01'.09 S 154° 21'.18 E
21° 01'.32 S 154° 23'.02 E
20° 59'.87 S 154° 24'.06 E
20° 55'.25 S 154° 23'.85 E
20° 54'.42 S 154° 23'.35 E
20° 58'.22 S 154° 20'.72 E.

Charts will be updated in due course. Mariners are advised to navigate with caution.

Chart which will be affected - Aus 611 - Aus 612

548(P)/2019 AUSTRALIA - QUEENSLAND - Hydrographers Passage - Shoaling
LADS Flight

Latest survey shows shoaler depths than those charted may exist in an area bounded by the following positions:

20° 36'.52 S 150° 04'.39 E
20° 30'.63 S 150° 17'.03 E
20° 23'.93 S 150° 16'.63 E
20° 06'.15 S 150° 04'.79 E
20° 11'.27 S 150° 00'.18 E
20° 21'.88 S 150° 04'.70 E
20° 27'.57 S 150° 09'.82 E
20° 32'.65 S 150° 01'.91 E.

Mariners are advised to navigate with caution in the area.

Charts will be updated in due course.

Chart which will be affected - Aus 821 - Aus 824

603(T)/2019 AUSTRALIA - QUEENSLAND - Weipa - Albatross Bay - Scientific instruments
Maritime Safety Queensland Notice 242(T)/2019

Special light buoys, *Fl. Y. 6s*, exist in the following positions:

12° 40'.10 S 141° 50'.77 E

12° 42'.09 S 141° 52'.00 E

12° 40'.42 S 141° 46'.62 E.

Chart temporarily affected - Aus 4

951(T)/2019 AUSTRALIA - QUEENSLAND - Abbot Point - Light beacon unlit; light buoy established

Former Notice - 369(T)/2017 is cancelled

Maritime Safety Queensland

The east cardinal light beacon, *Q(3)10s* (19° 51'.12 S 148° 03'.89 E), is unlit.

A special conical light buoy, *Fl. Y. 1·5s*, exists in position 19° 51'.05 S 148° 03'.95 E.

Chart temporarily affected - Aus 255 - Aus 826

105(T)/2020 AUSTRALIA - QUEENSLAND - Cape Bowling Green - Obstruction; light buoy

Maritime Safety Queensland Notice 19(T)/2020

An obstruction marked by a special light buoy, *Fl. Y. 2·5s*, exists in position 19° 18'.26 S 147° 22'.96 E.

Chart temporarily affected - Aus 827

286(T)/2020 AUSTRALIA - QUEENSLAND - Laguna Quays - Shoaling; nav aids

Former Notice - 917(T)/2017 is cancelled

Maritime Safety Queensland Notice 103(T)/2020

Shoaling exists within the entrance channel and waterways around the Laguna Quays Marina (20° 36'.0 S 148° 41'.0 E).

Nav aids marking the entrance channel and in the marina may not be operational.

Mariners are advised to navigate with caution in the area.

Chart temporarily affected - Aus 252

429(T)/2020 AUSTRALIA - QUEENSLAND - Mackay - Obstruction; light buoy

Maritime Safety Queensland Notice 183/2020

An obstruction marked by a special light buoy exists in position 21° 06'.43 S 149° 13'.52 E.

Chart temporarily affected - Aus 250

457(T)/2020 AUSTRALIA - QUEENSLAND - Cape Bowling Green - Obstruction southeastwards

Maritime Safety Queensland Notice 190(T)/2020

An obstruction, with least depth *15m*, exists in position 19° 20'.27 S 147° 35'.97 E.

Mariners are advised to navigate with caution in the area.

Chart temporarily affected - Aus 826 - Aus 827

555(T)/2020 AUSTRALIA - QUEENSLAND - Gold Coast - Scientific instrument

Maritime Safety Queensland Notice 84(T)/2020

A special light buoy, *Fl(5)Y. 20s*, exists in position 27° 58'.18 S 153° 26'.50 E.

Chart temporarily affected - Aus 814

1008(T)/2020 AUSTRALIA - QUEENSLAND - Townsville - Wreck

Maritime Safety Queensland Notice 427(T)/2020

A wreck marked by a special light buoy, *Q. Y.*, exists in position 19° 14'.91 S 146° 49'.57 E.

Mariners are advised to navigate with caution in the area.

Chart temporarily affected - Aus 256

1049(P)/2020 AUSTRALIA - TORRES STRAIT - Deliverance Island - Shoaling
HMAS *Albany*

Latest survey shows shoaling exists as follows:

<i>Depth</i>	<i>Position</i>
1.1m	9° 32'.89 S 141° 27'.03 E
3.6m	9° 32'.22 S 141° 27'.73 E.

Mariners are advised to navigate with caution in the area.

Charts will be updated in due course.

Chart which will be affected - Aus 842

21(T)/2021 AUSTRALIA - CORAL SEA - Middleton Reef - Unexploded ordnance
Parks Australia

An exclusion zone exists in an area bounded by the following positions:

29° 27'.12 S 159° 02'.92 E
29° 26'.58 S 159° 02'.92 E
29° 26'.58 S 159° 03'.55 E
29° 27'.12 S 159° 03'.55 E.

Unexploded ordnance may exist in the area and mariners are advised to navigate with caution.

Chart temporarily affected - Aus 618

64(T)/2021 AUSTRALIA - QUEENSLAND - Gladstone - Auckland Point Wharves - Harbour works
Maritime Safety Queensland 360(T)/2019

Construction of a mooring dolphin is in progress off the eastern end of berth No 4 (23° 50'.02 S 151° 15'.91 E) by vessel *AMS Shine* and the barge *M1201* and support vessels.

Vessels and hazards will display appropriate lights and shapes.

Vessels will monitor VHF Ch 13.

Mariners are advised to navigate with caution in the area.

Chart temporarily affected - Aus 245

247(T)/2021 AUSTRALIA - QUEENSLAND - Cape Ferguson - Scientific instrument
Australian Institute of Marine Science

A special spar light buoy, Q(4)Y.18s, exists in position 19° 16'.52 S 147° 03'.84 E.

Chart temporarily affected - Aus 256

249(P)/2021 AUSTRALIA - QUEENSLAND - Holt Island to Hexham Island - Shoaling
LADS Flight

Latest survey shows shoaler depths than those charted may exist in areas bounded by the following positions:

22° 11'.75 S 150° 22'.51 E
22° 11'.90 S 150° 22'.99 E
22° 13'.77 S 150° 22'.25 E
22° 13'.51 S 150° 21'.60 E;
and
22° 00'.22 S 150° 23'.51 E
22° 01'.04 S 150° 23'.61 E
22° 02'.68 S 150° 18'.70 E
22° 01'.44 S 150° 16'.29 E
22° 00'.19 S 150° 21'.01 E.

Mariners are advised to navigate with caution in the area.

Charts will be updated in due course.

Chart which will be affected - Aus 260 - Aus 367 - Aus 822

251(T)/2021 AUSTRALIA - QUEENSLAND - Moreton Bay - Rainbow Channel - Wanga Wallen Bank - Wreck; light buoy

Maritime Safety Queensland Notice 80(T)/2021

A wreck marked by a special light buoy, *Fl. Y. 2·5s*, exists in position 27° 26'.40 S 153° 25'.33 E.

Chart temporarily affected - Aus 236

332(T)/2021 AUSTRALIA - QUEENSLAND - Poll Islet - Wreck

Maritime Safety Queensland , Australian Border Force

A stranded wreck exists in position 10° 15'.17 S 142° 49'.58 E.

Chart temporarily affected - Aus 839 - Aus 841

337(P)/2021 AUSTRALIA - TORRES STRAIT - Boigu Island - Shoaling

HMAS *Leeuwin*

Latest survey shows shoaler depths than those charted may exist in areas bounded by the following positions:

9° 14'.38 S 142° 15'.82 E
9° 15'.78 S 142° 19'.88 E
9° 15'.49 S 142° 20'.00 E
9° 13'.58 S 142° 16'.26 E;
and
9° 12'.49 S 142° 15'.50 E
9° 12'.33 S 142° 13'.73 E
9° 13'.16 S 142° 13'.24 E
9° 13'.20 S 142° 15'.21 E.

Mariners are advised to navigate with caution in the area.

Charts will be updated in due course.

Chart which will be affected - Aus 841

378(T)/2021 AUSTRALIA - QUEENSLAND - Karumba - Shoaling

Former Notice - 819(T)/2020 is cancelled

Maritime Safety Queensland Notice 141/2021

Shoaling exists in the entrance channel between beacon No8 (17° 26'.36 S 140° 44'.73 E) and beacon No10 (17° 26'.65 S 140° 45'.32 E).

Mariners should not navigate along the charted recommended track between beacons No8 and No10 and instead should navigate between the Elbow Bank special light buoys, *Fl. Y. 2·5s*, to follow the change in channel position.

Mariners are advised to navigate with caution in the area.

Chart temporarily affected - Aus 6

562(T)/2021 AUSTRALIA - QUEENSLAND - Lucinda - Dungeness Bank - Light buoy

Maritime Safety Queensland Notice 225(T)/2021

The special light buoy, *Fl. Y. 2s* (18° 30'.75 S 146° 19'.09 E), has been temporarily repositioned to 18° 31'.00 S 146° 19'.28 E.

The light buoy marks the current entrance to the channel.

Chart temporarily affected - Aus 267

698(T)/2021 AUSTRALIA - QUEENSLAND - Bowen - Wreck

Maritime Safety Queensland Notice 294(T)/2021

A wreck marked by a special light buoy, Q.Y, exists in position 20° 01'.33 S 148° 15'.56 E.

Mariners are advised to navigate with caution in the area.

Chart temporarily affected - Aus 268

700(T)/2021 AUSTRALIA - QUEENSLAND - Hay Point - Dredging operations

Maritime Safety Queensland Notices 293(T)/2021

Vessels *Pacific Tiger* and *Sounds Good* are conducting dredging operations at the DBCT berths (21° 14'.97 S 149° 18'.33 E).

Vessels will display appropriate lights and shapes and will monitor VHF Ch 10 and Ch 16.

Mariners are advised to navigate with caution in the area.

Chart temporarily affected - Aus 249 - Aus 250

703(T)/2021 AUSTRALIA - QUEENSLAND - Townsville - Harbour works

Maritime Safety Queensland Notice 278(T)/2020

Harbour works associated with the construction of a rock wall are in progress in an area bounded by the coastline and the following positions:

<i>Position</i>	<i>Remarks</i>
19° 14'.78 S 146° 50'.33 E	
19° 14'.57 S 146° 50'.47 E	special light buoy, <i>Fl.Y.2-5s</i>
19° 14'.62 S 146° 50'.61 E	

Uncharted rocks resulting from the works will present a hazard to navigation in the area.

Mariners are advised not to anchor within or navigate through the area.

Chart temporarily affected - Aus 256 - Aus 827

738(T)/2021 AUSTRALIA - QUEENSLAND - Fitzroy River - Middle Channel - Scientific instrument

Maritime Safety Queensland Notice 31/2021

A special light buoy, Q.Y, exists in position 23° 28'.23 S 150° 56'.37 E.

Chart temporarily affected - Aus 265

741(T)/2021 AUSTRALIA - QUEENSLAND - Fraser Island - Elbow Point - Shoaling

Navionics

Depths of less than 1m have been reported in an area bounded by the following positions:

25° 44'.40 S 152° 59'.29 E
25° 44'.71 S 152° 59'.37 E
25° 44'.89 S 153° 00'.30 E
25° 44'.66 S 153° 00'.38 E
25° 44'.40 S 152° 59'.77 E.

Mariners are advised to navigate with caution in the area.

Charts will be updated in due course.

Chart temporarily affected - Aus 817

795(T)/2021 AUSTRALIA - TORRES STRAIT - Yorke Islands to Boigu Island - Scientific instruments

Maritime Safety Queensland Notice 330(T)/2021

Special light buoys, *Fl(5)Y.20s*, exist in the following positions:

9° 13'.27 S 142° 13'.24 E

9° 44'.85 S 143° 24'.09 E.

Chart temporarily affected - Aus 377 - Aus 840 - Aus 841

842(T)/2021 AUSTRALIA - QUEENSLAND - Great Sandy Strait - Light buoys

Former Notice - 754(T)/2021 is cancelled

Maritime Safety Queensland Notice 61(T)/2016, 146/2017, 145(T)/2021; 70/2020

Light buoys exist as follows:

<i>Number</i>	<i>Position</i>	<i>Characteristics</i>
S3	25° 12'.70 S 152° 54'.75 E	<i>Fl.G.2·5s</i>
NG1	25° 20'.20 S 153° 01'.40 E	<i>Fl.G.2·5s.</i>

Chart temporarily affected - Aus 817

980(T)/2021 AUSTRALIA - QUEENSLAND - Fitzroy River - South Channel - Scientific instrument

Former Notice - 661(T)/2016 is cancelled

Maritime Safety Queensland Notice 400(T)/2021

A special light buoy, *Fl.Y.4s*, exists in position 23° 30'.23 S 150° 45'.83 E.

Chart temporarily affected - Aus 819

981(T)/2021 AUSTRALIA - QUEENSLAND - Hay Point - Exclusion zone

Maritime Safety Queensland Notice 398(T)/2021

An exclusion zone exists in an area bounded by the coast and the following positions:

21° 16'.40 S 149° 17'.85 E
21° 15'.96 S 149° 18'.67 E
21° 16'.25 S 149° 18'.86 E
21° 16'.16 S 149° 19'.02 E
21° 15'.91 S 149° 18'.86 E
21° 15'.69 S 149° 18'.83 E
21° 15'.34 S 149° 18'.61 E
21° 15'.59 S 149° 18'.14 E
21° 15'.83 S 149° 18'.29 E
21° 16'.25 S 149° 17'.51 E.

Only authorised vessels are permitted to enter.

Mariners are advised to navigate with caution in the area.

Chart temporarily affected - Aus 249 - Aus 250 - Aus 823

1025(T)/2021 AUSTRALIA - TORRES STRAIT - Great North East Channel - Coconut Island - Scientific instrument

Former Notice - 486(T)/2021 is cancelled

Maritime Safety Queensland Notice 427(T)/2021

A special light buoy, *Fl(5)Y.20s*, exists in position 10° 03'.18 S 143° 03'.12 E.

Chart temporarily affected - Aus 839

25(T)/2022 AUSTRALIA - QUEENSLAND - Magnetic Island - Cockle Bay - Scientific instrument

Maritime Safety Queensland Notice 456(T)/2021

A scientific instrument marked by a special light beacon, *Fl.Y.2·5s*, exists in position 19° 10'.15 S 146° 48'.55 E.

Chart temporarily affected - Aus 256 - Aus 827

26(T)/2022 AUSTRALIA - QUEENSLAND - Townsville - Obstruction; light buoy

Maritime Safety Queensland Notice 461(T)/2021

An obstruction marked by a special light buoy, *Fl.Y.2·5s*, exists in position 19° 14'.66 S 146° 49'.89 E.

Chart temporarily affected - Aus 256

27(P)/2022 AUSTRALIA - TORRES STRAIT - Boigu Island - Shoaling
Australian Institute of Marine Science

The drying area (9° 15'.51 S 142° 06'.09 E) extends 0.27M northwest to position 9° 15'.31 S 142° 05'.91 E.

The reef (9° 11'.96 S 142° 10'.56 E) extends 0.27M south to position 9° 12'.23 S 142° 10'.56 E.

Mariners are advised to navigate with caution in the area.

Charts will be updated in due course.

Chart which will be affected - Aus 841

62(T)/2022 AUSTRALIA - QUEENSLAND - Abbot Bay - Light buoys
Maritime Safety Queensland Notice 01(T)/2022

Light buoys exist as follows:

<i>Position</i>	<i>Characteristics</i>
19° 50'.60 S 148° 01'.00 E	<i>Fl. Y. 4s</i>
19° 50'.50 S 148° 01'.25 E	<i>Fl. Y. 4s.</i>

Chart temporarily affected - Aus 255 - Aus 826

236(T)/2022 AUSTRALIA - QUEENSLAND - Bundaberg - Burnett River - Light buoy off station
Maritime Safety Queensland Notice 109(T)/2022

The starboard lateral light buoy, *Fl. G. 4s BR5* (24° 48'.78 S 152° 21'.77 E), is off station.

Chart temporarily affected - Aus 242

237(T)/2022 AUSTRALIA - QUEENSLAND - Cape Flattery - Scientific instrument
Maritime Safety Queensland Notice 125(T)/2022

A special spherical light buoy, *Fl(5)Y. 20s*, exists in position 14° 55'.63 S 145° 20'.65 E.

Chart temporarily affected - Aus 832

238(T)/2022 AUSTRALIA - QUEENSLAND - Hay Point - Light buoys
Maritime Safety Queensland Notice 118(T)/2022

Special light buoys, *Fl. Y. 3s*, exist in positions 21° 17'.46 S 149° 17'.88 E and 21° 17'.54 S 149° 17'.95 E.

Chart temporarily affected - Aus 250

277(T)/2022 AUSTRALIA - QUEENSLAND - Cairns - Trinity Inlet - Wreck
Maritime Safety Queensland Notice 156/2022

A wreck marked by a light, *Fl. Y. 3s*, exists in position 16° 56'.70 S 145° 46'.98 E.

Mariners are advised to navigate with caution in the area.

Chart temporarily affected - Aus 262

388(P)/2022 AUSTRALIA - QUEENSLAND - Bundaberg - Burnett River - Shoaling
Australian Hydrographic Office

Latest survey indicates shoaler depths than those charted may exist in the Burnett River between Long Reach and Millaquin Reach.

The most significant shoals are as follows:

<i>Position</i>	<i>Depth</i>
24° 49'.11 S 152° 22'.08 E	<i>-0.1m</i>
24° 49'.94 S 152° 22'.31 E	<i>0.8m.</i>

Mariners are advised to navigate with caution in the area.

Charts will be updated in due course.

Chart which will be affected - Aus 242

389(T)/2022 AUSTRALIA - QUEENSLAND - Great Sandy Strait - Tin Can Inlet - Wreck

Maritime Safety Queensland Notice 207(T)/2022

A stranded wreck marked by a special light buoy, *Fl. Y. 2-5s*, exists in position 25° 54'.14 S 153° 01'.40 E.

Mariners are advised to navigate with caution in the area.

Chart temporarily affected - Aus 817

422(T)/2022 AUSTRALIA - QUEENSLAND - Palm Beach - Light buoy off station

Maritime Safety Queensland Notice 220(T)/2022

The special light buoy, *Fl. Y. 5s* (28° 06'.34 S 153° 28'.42 E), is off station.

Chart temporarily affected - Aus 814

452(T)/2022 AUSTRALIA - QUEENSLAND - North Stradbroke Island - Wreck

Maritime Safety Queensland Notice 250/2022

A wreck exists in the vicinity of position 27° 29'.45 S 153° 46'.02 E.

Mariners are advised to navigate with caution in the area.

Chart temporarily affected - Aus 814

486(T)/2022 AUSTRALIA - QUEENSLAND - Abbot Point - Scientific instrument

Maritime Safety Queensland Notice 256(T)/2022

A special spherical light buoy, *Fl(5) Y. 20s*, exists in position 19° 51'.59 S 148° 05'.63 E.

Chart temporarily affected - Aus 255

490(T)/2022 AUSTRALIA - QUEENSLAND - Gold Coast Seaway - Light buoy destroyed eastwards

Maritime Safety Queensland Notice 266/2022

The special light buoy, *Fl. Y. 4s* (27° 54'.93 S 153° 27'.59 E), has been destroyed and has sunk in position.

Mariners are advised to navigate with caution in the area.

Chart temporarily affected - Aus 814

530(T)/2022 AUSTRALIA - QUEENSLAND - Gladstone - South Passage Island - Scientific instrument

Former Notice - 841(T)/2021 is cancelled

Vision Environment

A special light buoy, *Fl. Y. 6s*, exists in position 23° 47'.05 S 151° 11'.14 E.

Chart temporarily affected - Aus 245

536(T)/2022 AUSTRALIA - QUEENSLAND - Yorkeys Knob - Lights altered

Maritime Safety Queensland Notice 287(T)/2022

The rear leading light, *Iso. Bu. 2s* (16° 48'.09 S 145° 42'.93 E) has been temporarily altered to *Iso. 2s*.

The front leading light, *Q. Bu* (16° 48'.04 S 145° 42'.97 E) has been temporarily altered to *Q*.

Chart temporarily affected - Aus 262 - Aus 830

700(T)/2022 AUSTRALIA - QUEENSLAND - Townsville - Shoaling; light buoys

Former Notice - 535(T)/2022 is cancelled

Maritime Safety Queensland Notice 376(T)/2022

Mariners are advised to pass north east of the following:

<i>Position</i>	<i>Remarks</i>
19° 14'.66 S 146° 49'.97 E	
19° 14'.61 S 146° 50'.01 E	special light buoy, <i>Fl. Y. 2-5s WSM2</i>
19° 14'.55 S 146° 50'.02 E	special light buoy, <i>Fl. Y. 2-5s WSM1</i>
19° 14'.49 S 146° 50'.00 E	light beacon, <i>Q.G P15</i> .

Mariners should navigate with caution in the area.

Chart temporarily affected - Aus 256

701(T)/2022 AUSTRALIA - QUEENSLAND - Townsville - Channel widening works; nav aids

Former Notice - 359(T)/2022 is cancelled

Maritime Safety Queensland Notice 122(T)/2021, 125(T)/2021, 368(T)/2022, 379/2022, 380/2022

Barge *PMG181* and support vessels are conducting works to widen the channel as part of the Townsville Port Expansion Project.

During the works, beacons may be removed and replaced by virtual AIS while new beacons are installed.

Mariners are advised to navigate with caution in the area.

Chart temporarily affected - Aus 256

733(T)/2022 AUSTRALIA - QUEENSLAND - Cairns - Trinity Inlet - Light buoys

Maritime Safety Queensland Notice 403(T)/2022

Special light buoys, *Fl. Y. 4s*, exist in the following positions:

16° 54'.81 S 145° 47'.20 E
16° 54'.89 S 145° 47'.18 E
16° 55'.17 S 145° 47'.13 E.

Chart temporarily affected - Aus 262

736(T)/2022 AUSTRALIA - QUEENSLAND - Moreton Bay - Scarborough - Mooring buoy

Maritime Safety Queensland Notice 419(T)/2022

An unlit blue mooring buoy exists in position 27° 11'.00 S 153° 05'.90 E.

Chart temporarily affected - Aus 236

788(P)/2022 AUSTRALIA - CORAL SEA - Diamond Islets - Shoaling

LADS Flight

Shoaler depths than those charted exist in the vicinity of the Diamond Islets.

Charts will updated in due course.

Chart which will be affected - Aus 614

825(T)/2022 AUSTRALIA - QUEENSLAND - Hay Point - Mooring buoys

Former Notice - 65(T)/2022 is cancelled

Maritime Safety Queensland Notice 436(T)/2022

Daytime mooring buoys exist in the following positions:

21° 17'.51 S 149° 18'.43 E
21° 17'.51 S 149° 18'.55 E
21° 17'.51 S 149° 18'.69 E
21° 17'.51 S 149° 18'.83 E

21° 17'.76 S 149° 18'.29 E
21° 17'.75 S 149° 18'.48 E
21° 17'.74 S 149° 18'.71 E
21° 17'.73 S 149° 18'.92 E.

Cyclone mooring buoys exist in the following positions:

21° 20'.01 S 149° 23'.06 E
21° 20'.02 S 149° 23'.27 E
21° 20'.20 S 149° 23'.27 E
21° 20'.37 S 149° 22'.67 E
21° 20'.54 S 149° 22'.67 E
21° 20'.80 S 149° 22'.62 E
21° 21'.13 S 149° 23'.13 E.

Chart temporarily affected - Aus 249 - Aus 250

875(T)/2022 AUSTRALIA - QUEENSLAND - Brisbane River - Entrance Channel to Hamilton Reach - Obstructions
Maritime Safety Queensland

Due to a severe weather event, submerged obstructions and unusual currents may exist in the Brisbane River from the Entrance Channel (27° 18'.62 S 153° 12'.55 E) to South Brisbane Reach (27° 28'.29 S 153° 01'.22 E).

Mariners are advised to navigate with caution in the area.

Chart temporarily affected - Aus 237

877(T)/2022 AUSTRALIA - QUEENSLAND - Brisbane River - Hamilton Reach - Wreck
Maritime Safety Queensland Notice 172(T)/2022

A wreck marked by a special light buoy, *Fl.Y.2-5s*, exists in position 27° 26'.43 S 153° 03'.28 E.

Mariners are advised to navigate with caution in the area.

Chart temporarily affected - Aus 237

886(T)/2022 AUSTRALIA - QUEENSLAND - Moreton Bay - Drilling operations
Maritime Safety Queensland Notice 464(T)/2022

The barge *Sealift 1* and support vessels are conducting drilling operations 50m from shipping channel boundaries, but not within the channel itself. Specific channels include the Entrance, East, Main, East Knoll Bypass, Spitfire and Northwest as well as the inner anchorage at Brisbane Road.

Vessels will monitor VHF Ch 12.

Mariners are advised to navigate with caution in the area.

Chart temporarily affected - Aus 236

891(T)/2022 AUSTRALIA - QUEENSLAND - Moreton Bay - Spitfire Channel - Obstruction
Maritime Safety Queensland Notice 257(T)/2021

An obstruction exists on the seabed in position 27° 03'.63 S 153° 17'.32 E.

Mariners are advised to navigate with caution in the area.

Chart temporarily affected - Aus 236 - Aus 814 - Aus 815

893(T)/2022 AUSTRALIA - QUEENSLAND - Moreton Bay - Spitfire Channel - Light beacon unreliable
Maritime Safety Queensland Notice 103(T)/2021

The light beacon, *Fl.Y.1-5s S1* (27° 02'.88 S 153° 15'.99 E), is unreliable.

Chart temporarily affected - Aus 236

895(T)/2022 AUSTRALIA - QUEENSLAND - Pumicestone Channel - Wreck, light buoy

Maritime Safety Queensland Notice 466(T)/2020

A wreck marked by a special conical light buoy, *Fl.Y.2-5s*, exists in position 26° 48'.39 S 153° 07'.51 E.

Chart temporarily affected - Aus 236

897(T)/2022 AUSTRALIA - QUEENSLAND - Pumicestone Channel - Coastline inaccuracies; shoaling
Navionics

A major change to the coastline and depths has occurred in an area bounded by the following positions:

26° 49'.12 S 153° 07'.72 E

26° 49'.11 S 153° 08'.14 E

26° 49'.68 S 153° 08'.12 E

26° 49'.68 S 153° 07'.63 E.

Mariners are advised to navigate with caution in the area.

Chart temporarily affected - Aus 236 - Aus 815

944(T)/2022 AUSTRALIA - QUEENSLAND - Hydrographers Passage - Scientific instrument
EGS Survey Pty Ltd

A scientific instrument exists on the seabed in position 20° 17'.4 S 150° 19'.0 E.

Chart temporarily affected - Aus 821

945(T)/2022 AUSTRALIA - QUEENSLAND - Keppel Isles - North Keppel Island - Scientific instruments
Australian Institute of Marine Science

6 lit blue rafts exist in the vicinity of position 23° 04'.35 S 150° 52'.82 E.

Chart temporarily affected - Aus 820

946(T)/2022 AUSTRALIA - QUEENSLAND - Moreton Bay - Redcliffe - Light buoy unlit
Maritime Safety Queensland Notice 494(T)/2022

The starboard lateral light buoy, *Fl.G.4s* (27° 13'.23 S 153° 07'.27 E), is unlit.

Chart temporarily affected - Aus 236

1025(T)/2022 AUSTRALIA - QUEENSLAND - Thirsty Sound - Light buoy off station
Maritime Safety Queensland Notice 536(T)/2022

The port lateral light buoy, *Fl.R.4s* (22° 08'.02 S 150° 01'.43 E), is off station.

Chart temporarily affected - Aus 260

1026(T)/2022 AUSTRALIA - QUEENSLAND - Upstart Bay - Obstructions
Maritime Safety Queensland

Obstructions on the seabed exist within a 1M radius of position 19° 44'.13 S 147° 40'.74 E.

Mariners area advised not to anchor or trawl in the area.

Chart temporarily affected - Aus 826

31(T)/2023 AUSTRALIA - QUEENSLAND - Newman Reef - Beacon
Australian Maritime Safety Authority

The west cardinal beacon (10° 03'.59 S 143° 10'.01 E) structure is temporarily coloured BY.

Chart temporarily affected - Aus 837 - Aus 839

67(T)/2023 AUSTRALIA - QUEENSLAND - Townsville - Shoaling

Maritime Safety Queensland

Flooding and latest survey shows shoaler depths than those charted may exist in Ross River between positions 19° 15'.36 S 146° 50'.85 E and 19° 17'.00 S 146° 49'.51 E.

Mariners are advised to navigate with caution in the area.

Charts will be updated in due course.

Chart temporarily affected - Aus 256

68(T)/2023 AUSTRALIA - QUEENSLAND - Townsville - Obstructions

Maritime Safety Queensland Notice 24(T)/2023

Due to recent flooding, floating and submerged obstructions may exist in the coastal waters between Dunk Island (17° 56'.72 S 146° 09'.47 E) and Bowen (20° 00'.54 S 148° 17'.40 E).

Mariners are advised to navigate with caution in the area.

Chart temporarily affected - Aus 255 - Aus 256 - Aus 268 - Aus 825 - Aus 826 - Aus 827 - Aus 828 - Aus 829

99(T)/2023 AUSTRALIA - QUEENSLAND - Brisbane River - Lytton and Quarantine Reach - Obstruction; light buoy

Maritime Safety Queensland Notice 37(T)/2023

An obstruction marked by a special light buoy, *Fl.Y.2.5s*, exists in position 27° 24'.74 S 153° 08'.90 E.

Chart temporarily affected - Aus 237

134(T)/2023 AUSTRALIA - QUEENSLAND - Boyd Point - Light buoy off station westwards

Department of Agriculture and Fisheries

The special light buoy, *Fl.Y.3s FAD* (12° 54'.71 S 141° 22'.63 E), is off station and is currently in position 12° 56'.45 S 141° 22'.19 E.

Chart temporarily affected - Aus 301

137(T)/2023 AUSTRALIA - QUEENSLAND - Pumicestone Channel - Drilling operations

Maritime Safety Queensland Notice 55(T)/2023

The barge *Investigator* and a support vessel are conducting drilling operations in the vicinity of Bribie Island Bridge (27° 04'.24 S 153° 08'.71 E).

The operational area will be marked to the north and south by special light buoys.

All vessels will display appropriate lights and shapes and will monitor VHF Ch 16.

Mariners are advised to navigate with caution in the area.

Chart temporarily affected - Aus 236

138(T)/2023 AUSTRALIA - QUEENSLAND - Weipa - South Channel - Light buoy off station

Maritime Safety Queensland Notice 65(T)/2023

The special light buoy, *Fl(5)Y.20s* (12° 41'.28 S 141° 41'.09 E), is off station.

Chart temporarily affected - Aus 4

195(T)/2023 AUSTRALIA - QUEENSLAND - Cleveland Bay - Scientific instruments

Former Notice - 737(T)/2021 is cancelled

Maritime Safety Queensland Notice 67(T)/2023

Special light buoys, *Fl.Y.2.5s*, exist in the following positions:

19° 02'.34 S 146° 36'.93 E

19° 06'.45 S 146° 32'.48 E

19° 07'.34 S 146° 52'.92 E
19° 09'.32 S 146° 52'.10 E
19° 11'.20 S 146° 50'.34 E
19° 11'.81 S 146° 49'.07 E
19° 12'.19 S 146° 59'.41 E
19° 12'.79 S 146° 47'.55 E
19° 13'.58 S 146° 56'.98 E
19° 14'.05 S 146° 49'.50 E
19° 14'.80 S 146° 48'.90 E
19° 14'.91 S 146° 50'.92 E
19° 15'.18 S 146° 51'.11 E.

Chart temporarily affected - Aus 256 - Aus 827

196(T)/2023 AUSTRALIA - QUEENSLAND - Double Island Point - Light buoy unlit

Maritime Safety Queensland Notice 81(T)/2023

The special light buoy, *Fl.Y.4s* (25° 56'.62 S 153° 09'.89 E), is unlit.

Chart temporarily affected - Aus 815 - Aus 817

197(T)/2023 AUSTRALIA - QUEENSLAND - Karumba - Light buoy withdrawn

Former Notice - 136(T)/2023 is cancelled

Maritime Safety Queensland Notice 83(T)/2023

The starboard lateral light buoy, *Fl.G.2s No17* (17° 26'.71 S 140° 46'.91 E), has been temporarily withdrawn.

Chart temporarily affected - Aus 6

198(T)/2023 AUSTRALIA - QUEENSLAND - Mackay - Harbour works

Maritime Safety Queensland Notice 80(T)/2023

Works associated with the construction of a NIB wall are in progress in an area bounded by the coast and the following:

<i>Positions</i>	<i>Remarks</i>
21° 06'.66 S 149° 13'.77 E	marked by special light buoy, <i>Fl.Y.1.5s</i>
21° 06'.65 S 149° 13'.76 E	marked by special light buoy, <i>Fl.Y.1.5s</i>
21° 06'.63 S 149° 13'.74 E	marked by special light buoy, <i>Fl.Y.1.5s</i>
21° 06'.69 S 149° 13'.75 E	marked by special light buoy, <i>Fl.Y.1.5s</i>
21° 06'.67 S 149° 13'.74 E	marked by special light buoy, <i>Fl.Y.1.5s</i>
21° 06'.66 S 149° 13'.72 E	marked by special light buoy, <i>Fl.Y.1.5s</i>
21° 06'.64 S 149° 13'.72 E	marked by special light buoy, <i>Fl.R.3s</i> .

Mariners are advised to navigate with caution in the area and keep well clear.

Chart temporarily affected - Aus 250

199(T)/2023 AUSTRALIA - QUEENSLAND - Shoalwater Bay - Live firing

Maritime Safety Queensland Notice 76(T)/2023

Live firing will be conducted in the marine component of the Shoalwater Bay training area during the period 10 March to 2 April 2023.

A marine danger area extends to all internal waters bounded by the following positions:

22° 24'.75 S 150° 17'.35 E
22° 35'.87 S 150° 28'.80 E
22° 40'.00 S 150° 38'.00 E
22° 46'.20 S 150° 48'.51 E
22° 41'.12 S 150° 50'.17 E
22° 38'.80 S 150° 48'.21 E
22° 32'.22 S 150° 47'.36 E
22° 31'.09 S 150° 43'.53 E
22° 30'.20 S 150° 33'.89 E
22° 24'.33 S 150° 26'.87 E
22° 23'.84 S 150° 18'.02 E.

All waters, creeks, beaches and other areas within the declared marine danger area are not available for access.

There will be a safe anchorage available at Port Clinton, Pearl Bay, Island Head Creek and Supply Base Townshend Island.

Mariners are advised to keep clear of this area throughout the above times.

Chart temporarily affected - Aus 248 - Aus 260 - Aus 367 - Aus 820 - Aus 822

201(T)/2023 AUSTRALIA - QUEENSLAND - Townsville - Pump discharge

Maritime Safety Queensland Notice 90(T)/2023

Dewatering of the reclamation pond is in progress in an area bounded by the rock wall and the following:

<i>Position</i>	<i>Remarks</i>
19° 15'.05 S 146° 51'.02 E	marked by special light buoy, <i>Fl.Y.2·5s</i>
19° 15'.04 S 146° 51'.01 E	marked by special light buoy, <i>Fl.Y.2·5s</i>
19° 15'.02 S 146° 50'.99 E	marked by special light buoy, <i>Fl.Y.2·5s</i> .

The water discharge will create strong currents and bubbling on the sea surface in the vicinity of the area.

Mariners are advised not to approach within 100m of the northern rock wall and not to transit between the special light buoys and the rock wall.

Chart temporarily affected - Aus 256

241(T)/2023 AUSTRALIA - QUEENSLAND - Bowen - Stone Island - Sinclair Head - Light unlit

Maritime Safety Queensland Notice 99(T)/2023

The light, *Fl.4s 27m 10M* (20° 01'.94 S 148° 17'.62 E), is unlit.

Chart temporarily affected - Aus 268 - Aus 825 - Aus 826

242(T)/2023 AUSTRALIA - QUEENSLAND - Moreton Bay - North West Channel - Light beacon unlit

Maritime Safety Queensland Notice 68(T)/2023

The port lateral light beacon, *Fl.R.2·5s NW6* (26° 53'.56 S 153° 10'.72 E), is unlit.

Chart temporarily affected - Aus 236

244(T)/2023 AUSTRALIA - QUEENSLAND - Townsville - Mooring buoy

Maritime Safety Queensland Notice 108(T)/2023

A lit yellow mooring buoy, *Fl.Y.2·5s*, exists in position 19° 14'.03 S 146° 50'.90 E.

Chart temporarily affected - Aus 256

245(T)/2023 AUSTRALIA - TORRES STRAIT - Hovell Rock - Light buoy unlit

Maritime Safety Queensland Notice 71(T)/2023

The special light buoy, *Fl.Y.4s* (10° 35'.54 S 142° 13'.10 E), is unlit.

Chart temporarily affected - Aus 293 - Aus 299

274(T)/2023 AUSTRALIA - QUEENSLAND - Hay Point - Scientific instrument

Former Notice - 566(T)/2022 is cancelled

Maritime Safety Queensland Notice 121(T)/2023

A special light buoy, *Fl(5)Y.20s*, exists in position 21° 16'.67 S 149° 19'.33 E.

Chart temporarily affected - Aus 249 - Aus 250

275(T)/2023 AUSTRALIA - QUEENSLAND - Orpheus Island - Light buoy off station

Maritime Safety Queensland Notice 109(T)/2023

The black and yellow light buoy, *Fl.Y.2·5s* (18° 34'.35 S 146° 29'.87 E), has been dragged below the surface.

Mariners are advised to keep well clear and to navigate with caution in the area.

Chart temporarily affected - Aus 827 - Aus 828

286(T)/2023 AUSTRALIA - TORRES STRAIT - Horn Island - Wasaga - Wreck

Former Notice - 574(T)/2022 is cancelled

Maritime Safety Queensland Notice 311(T)/2022

A wreck marked by a special light buoy, *Fl.Y.2.5s*, exists in position 10° 35'.37 S 142° 14'.65 E.

Mariners are advised to navigate with caution in the area.

Chart temporarily affected - Aus 299

NORTHERN TERRITORY

211(T)/2021 AUSTRALIA - NORTHERN TERRITORY - Darwin - East Arm - Scientific instruments

Department of Infrastructure, Planning and Logistics NT Notice 21(T)/2019

Special light buoys, *Fl(5)20s*, exist in positions 12° 30'.22 S 130° 54'.24 E and 12° 30'.20 S 130° 54'.20 E.

Chart temporarily affected - Aus 26

215(T)/2021 AUSTRALIA - NORTHERN TERRITORY - Darwin Naval Base - Harbour works; exclusion zone

Department of Infrastructure, Planning and Logistics NT Notice 63/2020

Harbour works associated with wharf redevelopment are in progress in an area bounded by the coast and the following:

<i>Position</i>	<i>Remarks</i>
12° 27'.49 S 130° 49'.05 E	
12° 27'.52 S 130° 48'.98 E	special light buoy, <i>Fl.Y</i>
12° 27'.56 S 130° 48'.95 E	special light buoy, <i>Fl.Y</i>
12° 27'.61 S 130° 48'.92 E	special light buoy, <i>Fl.Y</i>
12° 27'.68 S 130° 48'.96 E	special light buoy, <i>Fl.Y</i>
12° 27'.85 S 130° 49'.25 E	special light buoy, <i>Fl.Y</i>
12° 27'.80 S 130° 49'.27 E	special light buoy, <i>Fl.Y</i>
12° 27'.76 S 130° 49'.30 E	special light buoy, <i>Fl.Y</i>
12° 27'.73 S 130° 49'.32 E.	

An exclusion zone exists in the area and only authorised vessels are permitted to enter.

Mariners are advised to keep well clear and to navigate with caution in the area.

Chart temporarily affected - Aus 25 - Aus 26

183(T)/2022 INDIAN OCEAN - Christmas Island - Mooring buoy off station

L Mioceovich

The mooring buoy (10° 25'.92 S 105° 39'.5 E) is off station and is currently in position 10° 26'.48 S 105° 39'.45 E.

Chart temporarily affected - Aus 920

832(T)/2022 AUSTRALIA - NORTHERN TERRITORY - Apsley Strait - Light buoy off station

Northern Territory Government Notice 33(T)/2022

The starboard lateral light buoy, *Fl.G.4s* (11° 43'.81 S 130° 36'.07 E), is off station.

Chart temporarily affected - Aus 23

834(T)/2022 AUSTRALIA - NORTHERN TERRITORY - Beagle Gulf - Drill rig

MODU *Valaris MS-1*

Drill rig *Valaris MS-1* is moored in position 12° 02'.15 S 130° 13'.62 E.

Chart temporarily affected - Aus 309

102(T)/2023 AUSTRALIA - NORTHERN TERRITORY - Darwin - Survey operations

Northern Territory Government Notice 11(T)/2023

On or about 6 February 2023, MV *Warrigal*, with a towed array, will be conducting unexploded ordinance survey operations between positions 12° 25'.9 S 130° 46'.7 E and 12° 31'.6 S 130° 51'.4 E.

The vessel will display appropriate lights and shapes and will monitor VHF Ch 10 and Ch 16.

Mariners are advised to navigate with caution in the area and keep a safe distance from the survey vessel and towed array.

Chart temporarily affected - Aus 25 - Aus 26 - Aus 309

287(T)/2023 AUSTRALIA - NORTHERN TERRITORY - Darwin - Emery Point - Light unlit
Northern Territory Government Notice 26(T)/2023

The light, *F(3)WR.15s 19/14M* (12° 27'.23 S 130° 48'.94 E), is unlit.

Chart temporarily affected - Aus 25 - Aus 26 - Aus 309

288(T)/2023 AUSTRALIA - TIMOR SEA - WESTERN AUSTRALIA - Ashmore Reef to Lynher Bank - Survey operations
Blue Ocean Marine Tech Systems

Four AUVs are conducting survey operations in an area bounded by the following positions:

13° 54'.01 S 120° 13'.13 E
15° 15'.67 S 121° 10'.57 E
14° 58'.50 S 123° 56'.73 E
12° 45'.89 S 124° 14'.60 E
12° 17'.78 S 122° 33'.86 E
12° 52'.05 S 122° 33'.83 E.

Mariners are advised to navigate with caution in the area.

Chart temporarily affected - Aus 314 - Aus 317 - Aus 319 - Aus 320 - Aus 322 - Aus 729 - Aus 4722 (INT 722)

WESTERN AUSTRALIA

1078(P)/2015 AUSTRALIA - WESTERN AUSTRALIA - East Holothuria Reef - Shoaling HMAS Mermaid

Depths less than 6m have been reported in the vicinity of position 13° 33'.6 S 126° 10'.8 E.

Mariners are advised to navigate with caution in the area.

Chart which will be affected - Aus 318 - Aus 319 - Aus 727 - Aus 728

480(T)/2016 AUSTRALIA - WESTERN AUSTRALIA - Rankin Bank - Scientific instrument MetOcean Engineers

A subsurface scientific instrument exists 200m below the surface in position 19° 32'.00 S 115° 48'.01 E.

Chart temporarily affected - Aus 327

731(T)/2016 AUSTRALIA - WESTERN AUSTRALIA - Rankin Bank - Scientific instruments southwestwards *Former Notice - 701(T)/2015 is cancelled* A McCarthy , MetOcean Engineers

Subsurface scientific instruments exist 80m below the surface in the following positions:

19° 56'.34 S 115° 23'.38 E

19° 56'.46 S 115° 23'.29 E.

Chart temporarily affected - Aus 327 - Aus 328

291(T)/2019 AUSTRALIA - WESTERN AUSTRALIA - Barrow Island - Well abandonment works northwestwards Chevron Australia

Sixteen anchors and mooring lines have been installed around the well in position 20° 24'.49 S 114° 50'.95 E.

Mariners are advised to navigate with caution in the area.

Chart temporarily affected - Aus 328

1118(P)/2019 AUSTRALIA - WESTERN AUSTRALIA - Point D'Entrecasteaux to Point Nuyts - Shoaling LADS Flight

Latest survey shows shoaler depths than those charted may exist in an area bounded by the coast and the following positions:

34° 50'.71 S 116° 08'.52 E

35° 01'.54 S 116° 10'.54 E

35° 03'.52 S 116° 37'.62 E.

Mariners are advised to navigate with caution in the area.

Charts will be updated in due course.

Chart which will be affected - Aus 336

1165(T)/2019 AUSTRALIA - WESTERN AUSTRALIA - Garden Island - Beacon Head - Obstruction; light buoy Fremantle Ports Notice 6(T)/2019, Department of Transport WA

An obstruction marked by a spherical isolated danger light buoy, *Fl(2)10s*, exists in position 32° 09'.16 S 115° 40'.65 E.

Chart temporarily affected - Aus 117

1280(P)/2019 AUSTRALIA - WESTERN AUSTRALIA - Houtman Abrolhos - North Island to Pelsaert Island - Shoaling Fugro LADS

In and around the islands and reefs of Houtman Abrolhos, between North Island (28° 17'.90 S 113° 35'.80 E) and Pelsaert

Island (28° 56'.11 S 113° 58'.09 E), latest survey shows the existence of numerous shoaler depths than those charted.

The most significant shoals are as follows:

<i>Position</i>	<i>Depth</i>
28° 31'.19 S 113° 42'.04 E	8.5m
28° 41'.12 S 113° 46'.57 E	9.6m
28° 41'.51 S 113° 50'.93 E	10.9m
28° 41'.90 S 113° 47'.09 E	5.0m
28° 42'.34 S 113° 51'.41 E	12.6m
28° 44'.33 S 113° 47'.60 E	7.6m
28° 44'.66 S 113° 47'.86 E	5.9m
28° 45'.22 S 113° 49'.21 E	18.4m
28° 45'.61 S 113° 48'.94 E	10.1m

Mariners are advised to navigate with caution in the area.

Charts will be updated in due course.

Chart which will be affected - Aus 332

1285(T)/2019 AUSTRALIA - WESTERN AUSTRALIA - Port Walcott - Outer North Channel - Tide gauge

Australian Maritime Safety Authority Auscoast Warning 288/2016

A tide gauge marked by a special light buoy, Q, exists in position 20° 24'.95 S 117° 23'.35 E.

Chart temporarily affected - Aus 55 - Aus 326

**212(T)/2020 AUSTRALIA - WESTERN AUSTRALIA - Rottnest Island - Scientific instruments northwestwards
CSIRO**

Subsurface scientific instruments exist as follows:

<i>Position</i>	<i>Depth below surface</i>
31° 38'.8 S 115° 11'.8 E	24m
31° 43'.7 S 115° 02'.5 E	23m
31° 45'.9 S 114° 57'.9 E	496m
31° 59'.0 S 115° 13'.7 E	180m
31° 59'.4 S 115° 23'.1 E	22m
32° 00'.0 S 115° 25'.0 E	46m

Chart temporarily affected - Aus 754

781(T)/2020 AUSTRALIA - WESTERN AUSTRALIA - Carnarvon - Scientific instrument

Department of Transport WA

A scientific instrument marked by a special light buoy, *Fl. Y.3s*, exists on the seabed in position 24° 54'.55 S 113° 37'.50 E.

Chart temporarily affected - Aus 73

933(T)/2020 AUSTRALIA - WESTERN AUSTRALIA - Rottnest Island - Scientific instrument

Curtin University

A lit scientific instrument, marked by a buoy, surfaces three times daily to transmit data in the vicinity of position 31° 58'.54 S 115° 23'.27 E.

Chart temporarily affected - Aus 754

1010(T)/2020 AUSTRALIA - WESTERN AUSTRALIA - Jurien Bay - Scientific instruments

Department of Transport WA Notice 81/2020

Scientific instruments, marked by special light buoys, *Fl. Y.3s*, exist in the following positions:

30° 16'.57 S 115° 02'.08 E
30° 16'.66 S 115° 02'.10 E
30° 18'.09 S 115° 01'.19 E
30° 18'.15 S 115° 00'.65 E
30° 17'.05 S 115° 02'.24 E.

Mariners are advised to navigate with caution in the area.

Chart temporarily affected - Aus 84 - Aus 753

401(T)/2021 AUSTRALIA - WESTERN AUSTRALIA - Fremantle - Dredging operations
Fremantle Ports Notice 2/2018

The dredge *Modi-R* is conducting dredging operations in an area bounded by the following positions:

32° 08'.33 S 115° 42'.20 E

32° 08'.27 S 115° 42'.40 E

32° 03'.60 S 115° 41'.34 E

32° 03'.63 S 115° 41'.13 E.

Mariners are advised to navigate with caution in the area.

Chart temporarily affected - Aus 112 - Aus 117 - Aus 754

404(T)/2021 AUSTRALIA - WESTERN AUSTRALIA - Koolan Island - Mooring buoy
Trinacria Consulting

The mooring buoy (16° 09'.15 S 123° 45'.05 E) has sunk in position.

Chart temporarily affected - Aus 40 - Aus 41

540(T)/2021 AUSTRALIA - WESTERN AUSTRALIA - Port of Ashburton - Light buoy off station
Pilbara Ports Authority

The special light buoy, *Fl(5)Y.20s* (21° 32'.46 S 115° 01'.98 E), is off station and currently in position 21° 32'.23 S 115° 01'.58 E.

Chart temporarily affected - Aus 64 - Aus 743

647(T)/2021 AUSTRALIA - WESTERN AUSTRALIA - Ashburton Island - Scientific instrument northwards
Pilbara Ports Authority Notice A9(T)/2021

A subsurface scientific instrument, with a least depth of *11m*, exists in position 21° 32'.43 S 114° 56'.01 E.

Chart temporarily affected - Aus 64 - Aus 328 - Aus 743 - Aus 744

653(T)/2021 AUSTRALIA - WESTERN AUSTRALIA - Onslow - Beadon Creek - Harbour works
Department of Transport WA Notice 90(T)/2021

Vessels *Margaret* and *Beadon Creek* are conducting wharf extension operations in the vicinity of position 21° 38'.68 S 115° 07'.86 E. Special light buoys, *Fl.Y*, have been established around the works.

All vessels will display appropriate lights and shapes, and will monitor VHF Ch 16.

Mariners are advised to navigate with caution in the area.

Chart temporarily affected - Aus 64

800(T)/2021 AUSTRALIA - WESTERN AUSTRALIA - Geraldton - Dredging operations
Mid West Ports Notice 17/2021

The dredge *Modi R*, support vessel *Bhagwan Abrolhos* and survey vessel *Black Jack* are conducting dredging and survey operations in the entrance channel (28° 45'.46 S 114° 34'.16 E), harbour and berth pockets .

A 150m exclusion zone exists around the dredge vessels. The vessels will monitor VHF Ch 11 and Ch 16.

Mariners are advised to navigate with caution in the area.

Chart temporarily affected - Aus 81

987(P)/2021 AUSTRALIA - WESTERN AUSTRALIA - Bonaparte Archipelago - D'Arcole Islands to Augereau Island - Shoaling
European Space Agency

In and around the D'Arcole Islands (14° 54'.97 S 124° 44'.43 E) and Augereau Island (14° 45'.33 S 125° 07'.78 E) latest survey shows the existence of numerous shoaler depths than those charted.

The most significant shoals are as follows:

<i>Position</i>	<i>Depth</i>
14° 43'.71 S 125° 04'.91 E	6.7m
14° 44'.82 S 125° 05'.02 E	9.7m
14° 45'.05 S 125° 05'.55 E	8.9m
14° 49'.37 S 125° 07'.51 E	7.4m
14° 52'.96 S 124° 43'.51 E	1.0m
14° 54'.01 S 124° 44'.13 E	3.3m
14° 55'.03 S 124° 39'.57 E	1.8m
14° 56'.09 S 124° 43'.45 E	3.6m
14° 57'.10 S 124° 39'.44 E	1.2m
14° 57'.22 S 124° 46'.19 E	1.8m
14° 57'.83 S 124° 39'.85 E	0.9m
15° 00'.80 S 124° 37'.79 E	3.7m.

Mariners are advised to navigate with caution in the area.

Charts will be updated in due course.

Chart which will be affected - Aus 37 - Aus 320 - Aus 729 - Aus 730

1028(T)/2021 AUSTRALIA - WESTERN AUSTRALIA - Carnarvon - Harbour works

Former Notice - 650(T)/2021 is cancelled

Department of Transport WA Notice 12/2021, 152/2021

The dredge *FT3* and support vessels *Seahorse Quenda* and *Y2K* are conducting works associated with the removal of the jetty (24° 52'.74 S 113° 37'.28 E).

A 50m exclusion zone exists around the jetty.

Lit mooring buoys exist in positions 24° 52'.71 S 113° 36'.86 E and 24° 52'.78 S 113° 36'.80 E.

All vessels will display appropriate lights and shapes and will monitor VHF Ch 16 and 73.

Mariners are advised to navigate with caution in the area and keep well clear of the works.

Chart temporarily affected - Aus 73

1075(T)/2021 AUSTRALIA - WESTERN AUSTRALIA - Port of Ashburton - Scientific instrument

Pilbara Ports Authority Notice A14(T)/2021

A scientific instrument exists on the seabed in position 21° 40'.45 S 115° 01'.35 E.

Chart temporarily affected - Aus 64 - Aus 743

130(T)/2022 AUSTRALIA - WESTERN AUSTRALIA - Carnarvon - Fascine Waterway - Shoaling

Department of Transport WA

Significant shoaling exists in an area bounded by the following positions:

24° 54'.44 S 113° 38'.46 E
24° 54'.51 S 113° 38'.84 E
24° 53'.95 S 113° 38'.52 E
24° 53'.96 S 113° 38'.31 E.

Mariners are advised to navigate with caution in the area.

Chart temporarily affected - Aus 73

212(T)/2022 AUSTRALIA - WESTERN AUSTRALIA - King George Sound - Scientific instruments

Department of Transport WA Notice 255/2022

Special light buoys, *Fl. Y. 4.5s*, exist in positions 35° 03'.20 S 118° 00'.91 E and 35° 05'.00 S 118° 00'.36 E.

Chart temporarily affected - Aus 118

287(T)/2022 AUSTRALIA - WESTERN AUSTRALIA - Bundegi Reef - Scientific instrument

Department of Transport WA Notice 792/2022

A special light buoy, *Fl. Y. 2.5s*, exists in position 21° 52'.15 S 114° 12'.23 E.

Chart temporarily affected - Aus 328 - Aus 329 - Aus 744 - Aus 745

509(T)/2022 AUSTRALIA - WESTERN AUSTRALIA - Trigg Island - Scientific instruments westwards

Former Notice - 498(T)/2020 is cancelled

Department of Transport WA Notice 66/2020

Special light buoys exist as follows:

<i>Position</i>	<i>Remarks</i>
31° 52'.70 S 115° 43'.11 E	<i>Q(5)Y.20s</i>
31° 52'.59 S 115° 43'.12 E	<i>Q(5)Y.20s</i>
31° 52'.53 S 115° 43'.32 E	<i>Fl. Y. 5s.</i>

Chart temporarily affected - Aus 112

583(T)/2022 AUSTRALIA - WESTERN AUSTRALIA - Port Hedland - Mooring buoys

Pilbara Ports Authority Notice 7(T)/2022

A lit orange cylindrical mooring buoy, *Q*, exists in position 20° 16'.40 S 118° 35'.29 E.

A lit orange cylindrical mooring buoy, *VQ*, exists in position 20° 16'.21 S 118° 35'.28 E.

Chart temporarily affected - Aus 53

623(T)/2022 AUSTRALIA - WESTERN AUSTRALIA - Bunbury - Koombana Bay - Harbour works

Department of Transport WA Notice 1852/2022

On or about 17 August 2022, works associated with the demolition and construction of the boat ramp in the vicinity of position 33° 18'.71 S 115° 38'.28 E will commence.

The works area will be marked by special light buoys.

The barge *TMC1* and support vessels will be conducting piling operations and unlit piles may exist in the area.

All vessels will display appropriate lights and shapes and will monitor VHF Ch 16.

The boat ramp will be closed for the duration of the works.

Mariners are advised to navigate with caution in the area.

Chart temporarily affected - Aus 115

842(T)/2022 AUSTRALIA - WESTERN AUSTRALIA - Glomar Shoal - Subsea operations southwestwards

CSIRO, Santos

MV *Adrianus* and support vessel are conducting subsea operations in the vicinity of position 19° 42'.24 S 116° 42'.06 E.

The operations involve the deployment of scientific instruments on the seabed and surveys conducted by a ROV. Two white unlit buoys may exist in the area.

Mariners are advised to navigate with caution in the area.

Chart temporarily affected - Aus 327

845(T)/2022 AUSTRALIA - WESTERN AUSTRALIA - Ningaloo Reef - Tantabiddi Passage - Light buoy off station

Department of Transport WA

The orange light buoy, *Fl(5)Y.20s* (21° 53'.62 S 113° 55'.71 E), is off station.

Chart temporarily affected - Aus 745

904(T)/2022 AUSTRALIA - WESTERN AUSTRALIA - Browse Island - Drill rig northwestwards

Former Notice - 507(T)/2022 is cancelled

Maersk Drilling

Drill rig *Noble Deliverer* is conducting drilling operations in position 13° 57'.98 S 123° 08'.69 E.

Chart temporarily affected - Aus 319 - Aus 320 - Aus 322

1032(T)/2022 AUSTRALIA - WESTERN AUSTRALIA - Geographe Bay - Scientific instruments

Former Notice - 800(T)/2022 is cancelled

Department of Transport WA Notice 2792/2022

Special light buoys, *Fl.Y.2.5s*, exist in the following positions:

33° 35'.49 S 115° 06'.99 E

33° 36'.01 S 115° 14'.99 E

33° 37'.62 S 115° 20'.28 E.

Chart temporarily affected - Aus 755

1034(T)/2022 AUSTRALIA - WESTERN AUSTRALIA - Joseph Bonaparte Gulf - Drill rig

MODU *Valaris 107*

Drill rig *Valaris 107* is conducting drilling operations in position 13° 53'.70 S 128° 29'.05 E.

Chart temporarily affected - Aus 318

1036(T)/2022 AUSTRALIA - WESTERN AUSTRALIA - Mullaloo - Scientific instruments

Department of Transport WA Notice 5463/2022

Scientific instruments, 4m below the surface, exist in positions 31° 45'.82 S 115° 42'.64 E and 31° 47'.43 S 115° 42'.34 E.

Chart temporarily affected - Aus 754

1038(T)/2022 AUSTRALIA - WESTERN AUSTRALIA - North West Cape - Drill rig northwards

Former Notice - 957(T)/2022 is cancelled

Australian Maritime Safety Authority Auscoast Warning 245/2022

Drill rig *Ocean Apex* is conducting drilling operations in position 21° 31'.39 S 114° 06'.59 E.

Chart temporarily affected - Aus 328 - Aus 329 - Aus 744

1039(T)/2022 AUSTRALIA - WESTERN AUSTRALIA - South West Break to Staggie Reef - Scientific instruments

Department of Transport WA Notice 5456/2022

Scientific instruments, 4m below the surface, exist in the following positions:

31° 34'.33 S 115° 35'.61 E

31° 38'.12 S 115° 38'.07 E

31° 42'.36 S 115° 38'.93 E.

Chart temporarily affected - Aus 754

36(T)/2023 AUSTRALIA - WESTERN AUSTRALIA - Cape Mentelle to Cape Leeuwin - Survey operations

MMA Offshore

Survey operations are in progress in an area bounded by the coast and the following positions:

33° 56'.58 S 114° 59'.51 E

33° 56'.58 S 114° 43'.32 E

34° 00'.81 S 114° 42'.81 E

34° 10'.14 S 114° 44'.10 E

34° 27'.48 S 114° 51'.78 E
34° 37'.38 S 115° 00'.36 E
34° 28'.92 S 115° 11'.64 E.

Tide gauges exist on the seabed in the following positions:

33° 55'.86 S 114° 43'.22 E
33° 56'.07 S 114° 43'.43 E
33° 59'.22 S 114° 57'.37 E
34° 08'.40 S 114° 59'.44 E
34° 09'.75 S 114° 39'.60 E
34° 20'.17 S 115° 00'.52 E
34° 20'.70 S 115° 10'.60 E
34° 20'.74 S 115° 00'.38 E
34° 30'.24 S 114° 46'.81 E
34° 31'.18 S 115° 10'.63 E
34° 38'.28 S 115° 01'.01 E.

Current meters exist on the seabed in the following positions:

34° 10'.58 S 114° 40'.01 E
34° 29'.81 S 114° 46'.44 E
34° 38'.20 S 115° 00'.90 E.

Mariners are advised to navigate with caution in the area.

Chart temporarily affected - Aus 116 - Aus 335 - Aus 336

40(T)/2023 AUSTRALIA - WESTERN AUSTRALIA - Port Hedland to Cuvier Abyssal - Cable laying operations
Gulf Agency Company (Australia)

Vessel *le De Re* is conducting cable laying operations between the following positions:

19° 54'.55 S 118° 36'.45 E
19° 13'.78 S 116° 42'.60 E
19° 32'.49 S 114° 00'.63 E
20° 06'.88 S 111° 08'.88 E
20° 52'.12 S 109° 41'.39 E.

Mariners are advised to navigate with caution in the area. 1M clearance requested.

Note: For e-notice users, please see full edition for map

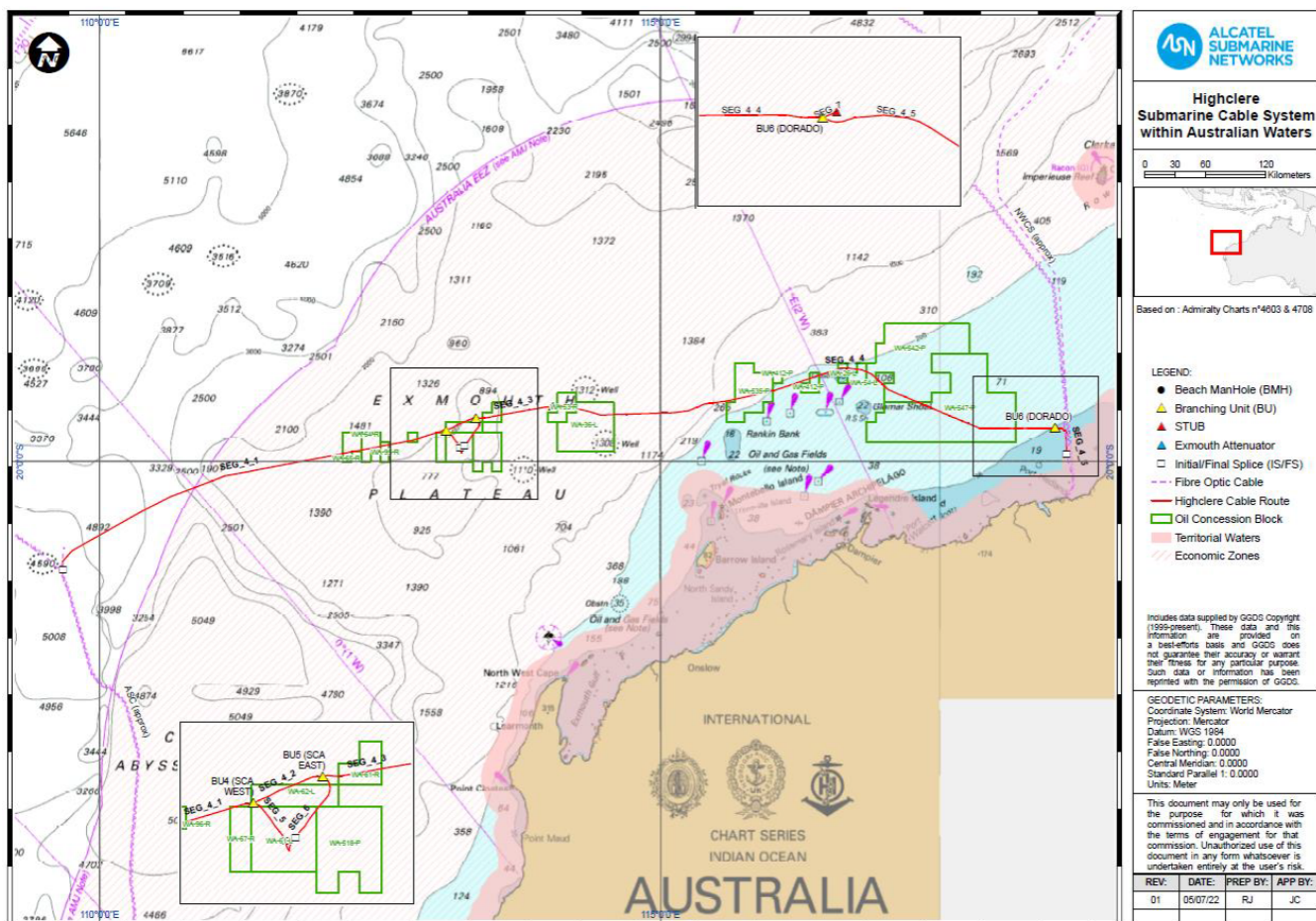


Chart temporarily affected - Aus 53 - Aus 326 - Aus 327 - Aus 328 - Aus 4070 (INT 70) - Aus 4071 (INT 71) - Aus 4603 (INT 603) - Aus 4708 (INT 708) - Aus 4722 (INT 722) - Aus 4723 (INT 723)

71(T)/2023 AUSTRALIA - WESTERN AUSTRALIA - Ashburton - Dredging operations Department of Transport WA Notice 5513/2023

Dredge *Ambiorix*, support vessels *AOM 14*, *AOM 15*, *Abrolhos*, *George* and a survey vessel are conducting dredging operations in the Port of Ashburton with spoil being deposited in the Port of Onslow spoil ground in position 21° 29'.0 S 115° 08'.0 E.

Non-Cyclone moorings exist in the following positions:

Position	Remarks
21° 39'.91 S 115° 01'.26 E	FL.Y.3s
21° 39'.77 S 115° 01'.44 E	FL.Y.2s

Vessels will display appropriate lights and shapes and monitor VHF Ch 14 & Ch 16.

Mariners are advised to navigate with caution in the area.

Chart temporarily affected - Aus 64 - Aus 743

73(T)/2023 AUSTRALIA - WESTERN AUSTRALIA - Barrow Island - Subsea operations northwestwards MV *Pride*

MV *Pride* will be conducting subsea operations in the vicinity of the following positions:

19° 48'.00 S 114° 36'.00 E
 20° 30'.00 S 114° 54'.00 E

Mariners are advised to navigate with caution in the area.

Chart temporarily affected - Aus 328 - Aus 4723 (INT 723)

75(T)/2023 AUSTRALIA - WESTERN AUSTRALIA - Fremantle - Fishing Boat Harbour - Harbour works
Department of Transport WA Notice 5515/2023

Reclamation works are in progress in the vicinity of position 32° 03'.78 S 115° 44'.67 E.

The works area will be marked by special light buoys.

Vessels will display appropriate lights and shapes and will monitor VHF Ch 16.

Mariners are advised to navigate with caution in the area and keep well clear.

Chart temporarily affected - Aus 112 - Aus 117

77(T)/2023 AUSTRALIA - WESTERN AUSTRALIA - Jurien Bay - Dredging operations
Department of Transport WA Notice 5526(T)/2023

The dredge *Mudlark 1* is conducting dredging operations in Jurien Bay Boat Harbour (30° 17'.3 S 115° 02'.4 E).

A floating and submerged pipeline marked by special light buoys is connected to the dredge.

The dredge will display appropriate lights and shapes.

Mariners are required to contact the dredge on VHF Ch 16 and 74 prior to passing the dredge and are advised to navigate with caution in the area.

Chart temporarily affected - Aus 84

78(T)/2023 AUSTRALIA - WESTERN AUSTRALIA - Roly Rock - Drill rig southwards
Department of Transport WA Notice 5524/2023

Drill rig *Noble Tom Prosser* is moored in position 20° 30'.75 S 116° 30'.10 E.

Chart temporarily affected - Aus 57 - Aus 327 - Aus 742

107(T)/2023 AUSTRALIA - WESTERN AUSTRALIA - Fremantle - Survey operations
Precision Hydrographic Services

On or about 8 February 2023, MV *Offshore Solution*, with a 300m towed array, will be conducting survey operations between the following positions:

32° 13'.31 S 115° 42'.56 E
32° 08'.32 S 115° 42'.31 E
32° 03'.58 S 115° 41'.20 E
31° 58'.60 S 115° 41'.74 E
31° 54'.90 S 115° 35'.88 E
31° 54'.90 S 115° 11'.07 E.

Mariners are advised to navigate with caution in the area. 300m clearance requested.

Chart temporarily affected - Aus 112 - Aus 117 - Aus 754

108(T)/2023 AUSTRALIA - WESTERN AUSTRALIA - Glomar Shoal - Subsea operations northwestwards
Former Notice - 76(T)/2023 is cancelled
Santos , DOF Group

On or about 9 February 2023, vessel *Skandi Hercules* and support vessels will be conducting subsea operations associated with the decommissioning of the Mutineer, Exeter, Finucane and Fletcher fields in an area bounded by the following positions:

19° 19'.92 S 116° 50'.08 E
19° 19'.92 S 116° 30'.08 E
19° 09'.92 S 116° 30'.08 E
19° 09'.92 S 116° 50'.08 E.

Mariners are advised to navigate with caution in the area.

Chart temporarily affected - Aus 327 - Aus 4722 (INT 722) - Aus 4723 (INT 723)

109(T)/2023 AUSTRALIA - WESTERN AUSTRALIA - Montebello Islands - Light buoy

Former Notice - 39(T)/2023 is cancelled
Santos

The *Campbell* platform, *Mo(U)Y.15s* (20° 24'.85 S 115° 43'.80 E), is unlit. A special light buoy, *Mo(U)Y.15s*, exists in position 20° 24'.80 S 115° 43'.90 E.

Chart temporarily affected - Aus 327 - Aus 742 - Aus 4723 (INT 723)

111(T)/2023 AUSTRALIA - WESTERN AUSTRALIA - Princess Royal Harbour - Marine farm; light buoys

Department of Transport WA Notice 5539/2023

A marine farm, marked by special light buoys, *Fl.Y.4s*, exists in an area bounded by the following positions:

35° 04'.48 S 117° 54'.71 E

35° 04'.48 S 117° 54'.74 E

35° 04'.41 S 117° 54'.74 E

35° 04'.41 S 117° 54'.71 E.

Chart temporarily affected - Aus 118

145(T)/2023 AUSTRALIA - WESTERN AUSTRALIA - Port Hedland - Light beacon maintenance works

Pilbara Ports Authority Notice PH2(T)/2023

Barges *Pilbara 250* and *Pilbara 500* and support vessels *Quokka*, *Keller Ocean* and *Hardline* are conducting light beacon maintenance works between C1 (19° 59'.49 S 118° 26'.17 E) and C14 (20° 08'.81 S 118° 29'.73 E).

Works will involve the removal of old beacons and installation of new beacons. Temporary lights will be installed on the barges, with light characteristics corresponding with the the light characteristic of the beacon at which the maintenance is being conducted.

Vessels will display appropriate lights and shapes and will monitor VHF Ch 12 and Ch 16.

Mariners are advised to navigate with caution in the area and keep well clear.

Chart temporarily affected - Aus 53

148(T)/2023 AUSTRALIA - WESTERN AUSTRALIA - Shark Bay - Denham Channel - Scientific instrument

Department of Transport WA Notice 5561/2023

A subsurface scientific instrument, 0.66m above the seabed, exists in position 25° 53.91' S 113° 14.11' E.

Chart temporarily affected - Aus 74 - Aus 331

150(T)/2023 AUSTRALIA - WESTERN AUSTRALIA - Two Rocks - Wreck

Department of Transport WA Notice 5556/2023

A wreck exists in position 31° 29'.48 S 115° 34'.39 E.

Mariners are advised to navigate with caution in the area.

Chart temporarily affected - Aus 754

208(T)/2023 AUSTRALIA - WESTERN AUSTRALIA - Muiron Islands - Well plug and abandonment works northwestwards

Former Notice - 334(T)/2022 is cancelled
Woodside Energy Ltd

Drill rig *Valaris DPS-1*, vessel *Skandi Hercules* and support vessels *Normand Swan*, *Normand Tortuga* and *Siem Pilot* are conducting well plug and abandonment works in the following positions:

21° 28'.90 S 113° 59'.32 E

21° 27'.93 S 113° 59'.58 E

21° 29'.26 S 113° 58'.51 E

21° 30'.06 S 113° 57'.85 E.

Mariners are advised to navigate with caution in the area.

Chart temporarily affected - Aus 328 - Aus 329

209(T)/2023 AUSTRALIA - WESTERN AUSTRALIA - Muiron Islands - Subsea operations northwestwards
Santos

On or about 14 March 2023, vessel *Southern Star* will be conducting subsea inspection, maintenance, monitoring and repair operations in the vicinity of the following positions:

21° 20'.96 S 114° 04'.39 E

21° 23'.21 S 114° 04'.60 E

21° 23'.86 S 114° 04'.08 E.

Mariners are advised to navigate with caution in the area.

Chart temporarily affected - Aus 328 - Aus 329 - Aus 744

210(T)/2023 AUSTRALIA - WESTERN AUSTRALIA - Onslow - Beadon Bay - Scientific instruments
Department of Transport WA Notice 5587/2023

Subsurface scientific instruments, 0.8m above seabed, exist in positions 21° 37'.67 S 115° 07'.81 E and 21° 37'.97 S 115° 07'.66 E.

Chart temporarily affected - Aus 64

290(T)/2023 AUSTRALIA - WESTERN AUSTRALIA - Barrow Island - Town Point - Light beacon unlit
Chevron Australia Notice 1/2023

The special light beacon, *Mo(U)Y.15s* (20° 49'.09 S 115° 32'.95 E), is unlit.

Chart temporarily affected - Aus 65 - Aus 742

291(T)/2023 AUSTRALIA - WESTERN AUSTRALIA - Browse Island - Scientific instruments westwards
The University of Western Australia

Subsurface scientific instruments, 15m below the surface, exist in the following positions:

14° 03'.15 S 123° 01'.80 E

14° 07'.35 S 122° 49'.02 E

14° 13'.74 S 123° 01'.91 E.

Mariners are advised to navigate with caution in the area.

Chart temporarily affected - Aus 319 - Aus 320 - Aus 322

292(T)/2023 AUSTRALIA - WESTERN AUSTRALIA - Dampier - Scientific instruments
Former Notice - 364(T)/2022 is cancelled
O2 Marine

Special light buoys, *Fl.Y.4s*, exist in the following positions:

20° 17'.97 S 116° 53'.84 E

20° 21'.20 S 116° 50'.45 E

20° 22'.71 S 116° 47'.52 E

20° 26'.75 S 116° 58'.23 E

20° 26'.77 S 116° 37'.53 E

20° 28'.16 S 116° 42'.27 E

20° 28'.26 S 116° 47'.79 E

20° 29'.50 S 116° 49'.06 E

20° 30'.71 S 116° 47'.13 E

20° 31'.54 S 116° 39'.60 E

20° 32'.17 S 116° 46'.67 E

20° 32'.40 S 116° 41'.06 E

20° 32'.42 S 116° 48'.19 E

20° 32'.46 S 116° 46'.40 E

20° 34'.28 S 116° 46'.79 E

20° 35'.14 S 116° 46'.49 E

20° 37'.32 S 116° 44'.70 E

20° 38'.38 S 116° 44'.14 E

20° 40'.26 S 116° 39'.27 E.

Chart temporarily affected - Aus 57 - Aus 59 - Aus 327 - Aus 742

293(T)/2023 AUSTRALIA - WESTERN AUSTRALIA - Dampier Archipeligo - Legendre Island - Scientific instrument northwards

Former Notice - 366(T)/2022 is cancelled
O2 Marine

A scientific instrument exists on the seabed in position 20° 17'.89 S 116° 51'.58 E.

Chart temporarily affected - Aus 57 - Aus 327

SOUTH AUSTRALIA

436(T)/2017 AUSTRALIA - SOUTH AUSTRALIA - Fleurieu Peninsula - Haycock Point - Hulk; prohibited area
Former Notice - 619(T)/2016 is cancelled
Department of Planning, Transport and Infrastructure SA Notices 37/2014, 8/2017

A lit hulk, *Fl.Y.4s*, exists in position 35° 25'.23 S 138° 18'.33 E.

A prohibited area, marked by special buoys, exists in an area bounded by the following positions:

35° 25'.15 S 138° 18'.28 E

35° 25'.17 S 138° 18'.42 E

35° 25'.32 S 138° 18'.39 E

35° 25'.29 S 138° 18'.26 E.

Chart temporarily affected - Aus 485 - Aus 780

794(T)/2018 AUSTRALIA - SOUTH AUSTRALIA - Flinders Island - Point Malcolm - Light unlit
Department of Planning, Transport and Infrastructure SA Notice 28/2018

The light, *Fl(2) 10s 67m 11M* (33° 40'.90 S 134° 31'.59 E) is unlit.

Chart temporarily affected - Aus 342

733(T)/2019 AUSTRALIA - SOUTH AUSTRALIA - Lacedpede Bay - Wreck
Australian Maritime Safety Authority Auscoast 180/2019

A wreck exists in position 36° 26'.93 S 139° 40'.20 E.

Chart temporarily affected - Aus 347

723(T)/2020 AUSTRALIA - SOUTH AUSTRALIA - Investigator Strait to Gulf St Vincent - Tide gauges
Department for Infrastructure and Transport SA Notice 24(T)/2020

Tide gauges, 3m above the seabed, exist in the following positions:

34° 42'.09 S 138° 07'.34 E

34° 57'.48 S 138° 05'.75 E

35° 15'.30 S 138° 13'.00 E

35° 16'.79 S 137° 23'.74 E

35° 20'.50 S 137° 46'.80 E.

Mariners are advised to navigate with caution in the area and avoid anchoring or trawling.

Chart temporarily affected - Aus 485 - Aus 780 - Aus 781

884(T)/2020 AUSTRALIA - SOUTH AUSTRALIA - Glenelg - Shoaling; dredging operations
Department of Planning, Transport and Infrastructure SA Notice 26/2018

Shoaling exists in the entrance channel to Holdfast Shores (34° 58'.42 S 138° 30'.51 E).

Dredging operations are in progress in the area.

Mariners are advised to navigate with caution in the area.

Chart temporarily affected - Aus 781

886(T)/2020 AUSTRALIA - SOUTH AUSTRALIA - Wirrina Cove - Light beacon altered
Department of Planning, Transport and Infrastructure SA Notice 7/2019

The light beacon, *F.Bu* (35° 30'.07 S 138° 14'.35 E), has been temporarily altered to *F.Y.*

Chart temporarily affected - Aus 347 - Aus 780

81(T)/2021 AUSTRALIA - SOUTH AUSTRALIA - Gulf St Vincent - Rogues Point - Artificial reef

An artificial reef is being developed in an area bounded by the following positions:

34° 30'.63 S 137° 53'.95 E
34° 30'.63 S 137° 54'.12 E
34° 30'.47 S 137° 54'.13 E
34° 30'.47 S 137° 53'.95 E.

A lit raft exists in position 34° 30'.59 S 137° 53'.99 E.

Chart temporarily affected - Aus 781

291(T)/2021 AUSTRALIA - SOUTH AUSTRALIA - Port Adelaide - Shoaling

Department for Transport, Energy and Infrastructure SA Notice 38/2007

Silting has resulted in width restrictions being imposed in the main channel of the Port Adelaide River between No 40 beacon (34° 47'.86 S 138° 30'.79 E) and No 41 beacon (34° 48'.52 S 138° 30'.77 E).

Mariners should avoid the western side of the main channel and navigate with caution in this part of the River as the available navigable channel is now only 90 metres wide measured from the eastern edge.

Mariners intending to transit this section should contact the Manager Marine Operations, Flinders Ports Pty Ltd on (08) 8447 0622 to confirm maximum widths.

Chart temporarily affected - Aus 130

492(P)/2021 AUSTRALIA - SOUTH AUSTRALIA - Masillon Island to Rocky Island - Islands out of position

Australian Hydrographic Office

The following islands are charted out of position:

	<i>Charted position</i>	<i>Actual position</i>
Masillon Island	32° 33'.57 S 133° 17'.46 E	32° 33'.82 S 133° 17'.30 E
Fenelon Island	32° 34'.80 S 133° 17'.18 E	32° 35'.08 S 133° 16'.94 E
Hart Island	32° 38'.49 S 133° 09'.40 E	32° 38'.68 S 133° 08'.26 E
Cannan Reefs	32° 38'.37 S 133° 14'.92 E	32° 38'.78 S 133° 14'.42 E
Rocky Island	34° 48'.71 S 134° 42'.93 E	34° 48'.71 S 134° 43'.45 E.

Mariners are advised to navigate with caution in the area.

Charts will updated in due course.

Chart which will be affected - Aus 341 - Aus 342 - Aus 343

613(T)/2021 AUSTRALIA - SOUTH AUSTRALIA - Thevenard - Yatala Channel - Harbour works

Department for Infrastructure and Transport SA Notice 16(T)/2021

Maintenance and construction activities are in progress on the Thevenard Jetty (32° 08'.95 S 133° 38'.48 E) and throughout the Yatala Channel (32° 11'.54 S 133° 35'.08 E)

All vessels will monitor VHF Ch 12.

Mariners are advised to navigate with caution in the area.

Chart temporarily affected - Aus 120 - Aus 341

719(T)/2021 AUSTRALIA - SOUTH AUSTRALIA - Port Lincoln - Scientific instruments

Department for Infrastructure and Transport SA Notice 22(T)/2021

Scientific instruments exist on the seabed as follows:

<i>Position</i>	<i>Remarks</i>
34° 44'.29' S 135° 57'.34' E	
34° 46'.91' S 135° 53'.52' E	
34° 43'.06' S 135° 54'.27' E	2 poly surface floats

Mariners are advised to navigate with caution in the area.

Chart temporarily affected - Aus 134 - Aus 776

803(T)/2021 AUSTRALIA - SOUTH AUSTRALIA - Gulf St Vincent - Investigator Strait to Adelaide - Scientific instruments

Former Notice - 771(T)/2021 is cancelled

Department for Infrastructure and Transport SA Notice 25(T)/2021

Special light buoys, *Fl.Y.2s*, exist in the following positions:

34° 51'.30 S 138° 21'.00 E

35° 01'.50 S 138° 27'.00 E.

An unlit special buoy exists in position 35° 34'.20 S 136° 55'.53 E.

Chart temporarily affected - Aus 130 - Aus 780 - Aus 781

587(T)/2022 AUSTRALIA - SOUTH AUSTRALIA - Wallaroo - Point Hughes - Harbour works

Department for Infrastructure and Transport SA Notice 18(T)/2022

Works associated with the construction of a new breakwater are in progress in the vicinity of position 33° 55'.88 S 137° 36'.29 E.

The works area is marked by special light buoys, *Fl.Y.4s*.

Mariners are advised to navigate with caution in the area.

Chart temporarily affected - Aus 777

674(P)/2022 AUSTRALIA - SOUTH AUSTRALIA - Kangaroo Island - Cape Gantheaume - Shoaling

Department for Environment and Water SA

Latest survey indicates shoaler depths than those charted may exist in an area bounded by the following positions:

36° 04'.60 S 137° 14'.33 E

36° 10'.46 S 137° 18'.29 E

36° 10'.48 S 137° 28'.99 E

36° 06'.90 S 137° 33'.76 E

36° 05'.49 S 137° 32'.95 E

36° 03'.40 S 137° 15'.00 E.

Mariners are advised to navigate with caution in the area.

Charts will be updated in due course.

Chart which will be affected - Aus 346 - Aus 485

909(T)/2022 AUSTRALIA - SOUTH AUSTRALIA - Thevenard - Light altered

Department for Infrastructure and Transport SA Notice 40(T)/2022

The light, Q (32° 08'.96 S 133° 38'.36 E), has been temporarily altered to F and the white sector removed.

Chart temporarily affected - Aus 120

910(T)/2022 AUSTRALIA - SOUTH AUSTRALIA - Yorke Peninsula - Myponie Point - Scientific instrument

Department for Infrastructure and Transport SA Notice 38(T)/2022

A scientific instrument exists on the seabed in position 33° 49'.20 S 137° 37'.14 E.

Mariners are advised to navigate with caution in the area

Chart temporarily affected - Aus 777 - Aus 778

998(T)/2022 AUSTRALIA - SOUTH AUSTRALIA - Two Hummock Point to Point Riley - Scientific instruments

Department for Infrastructure and Transport SA Notice 41(T)/2022

Scientific instruments exist on the seabed in the following positions:

32° 46'.43 S 137° 50'.38 E

33° 14'.56 S 137° 30'.23 E

33° 44'.84 S 137° 12'.20 E
33° 53'.17 S 137° 29'.01 E.

Mariners are advised to navigate with caution in the area

Chart temporarily affected - Aus 777 - Aus 778

41(T)/2023 AUSTRALIA - SOUTH AUSTRALIA - Investigator Strait to Sanders Bank - Survey operations; scientific instruments

Precision Hydrographic Services , Department for Infrastructure and Transport SA Notice 53(T)/2022

Vessel *Ocean Dynasty* is conducting survey operations in areas bounded by the following positions:

35° 11'.93 S 138° 13'.66 E
35° 15'.31 S 138° 05'.48 E
35° 35'.04 S 137° 58'.19 E
35° 34'.50 S 137° 54'.67 E
35° 12'.82 S 138° 02'.67 E
35° 07'.56 S 138° 15'.15 E;
and
36° 18'.15 S 137° 51'.94 E
36° 14'.88 S 138° 06'.71 E
36° 05'.18 S 138° 21'.52 E
35° 51'.74 S 138° 10'.92 E
35° 56'.82 S 138° 03'.12 E
35° 53'.56 S 137° 51'.89 E.

Tide gauges marked by special light buoys, *Fl. Y. 1·5s*, exist in the following positions:

35° 48'.1 S 138° 07'.3 E
36° 04'.3 S 138° 17'.5 E
36° 13'.1 S 138° 06'.9 E
36° 18'.2 S 137° 51'.5 E
36° 06'.2 S 137° 51'.2 E
35° 54'.1 S 137° 51'.6 E
35° 59'.5 S 138° 04'.5 E.

Mariners are advised to navigate with caution in the area.

Chart temporarily affected - Aus 346 - Aus 347 - Aus 780 - Aus 781

42(T)/2023 AUSTRALIA - SOUTH AUSTRALIA - Spencer Gulf - Louth Bay to Arno Bay - Scientific instruments

Department for Infrastructure and Transport SA Notice 54(T)/2022

Special light buoys, *Fl. Y. 2·5s*, exist in the following positions:

33° 56'.49 S 136° 37'.28 E
34° 01'.73 S 136° 36'.23 E
34° 34'.23 S 135° 59'.81 E
34° 34'.45 S 136° 07'.35 E.

Chart temporarily affected - Aus 776 - Aus 777

213(T)/2023 AUSTRALIA - SOUTH AUSTRALIA - Lucky Bay - Dredging operations

Department for Infrastructure and Transport SA Notice 4(T)/2023

Dredging operations are in progress in an area bounded by the following positions:

33° 42'.55 S 137° 02'.26 E
33° 42'.82 S 137° 02'.70 E
33° 42'.58 S 137° 02'.91 E
33° 42'.40 S 137° 02'.60 E.

A floating pipeline marked by buoys exists in the area.

The dredge will display appropriate lights and shapes.

Mariners are advised to navigate with caution in the area.

Chart temporarily affected - Aus 777

214(T)/2023 AUSTRALIA - SOUTH AUSTRALIA - Whyalla - Scientific instruments

Department for Infrastructure and Transport SA Notice 5(T)/2023

Special light buoys, *Fl. Y. 3s*, exist in the following positions:

33° 02'.04 S 137° 36'.01 E

33° 02'.12 S 137° 35'.86 E

33° 02'.25 S 137° 35'.92 E

33° 02'.26 S 137° 35'.99 E.

Chart temporarily affected - Aus 136

297(T)/2023 AUSTRALIA - SOUTH AUSTRALIA - Port Adelaide - Dredging operations

Department for Infrastructure and Transport SA Notice 12(T)/2023

The dredge *MODI R* and support vessel *Molly Grace* are conducting dredging operations in the Inner and Outer harbour.

Mariners are advised to navigate with caution in the area.

Chart temporarily affected - Aus 130

VICTORIA

379(T)/2018 AUSTRALIA - VICTORIA - Port Phillip - Williamstown - Light beacon unlit

Parks Victoria Notice 149(T)/2018

The special light beacon, *Fl.Y.3s* (37° 51'.84 S 144° 52'.08 E) is unlit.

Chart temporarily affected - Aus 143 - Aus 155

1292(T)/2019 AUSTRALIA - VICTORIA - Port Phillip - Sandringham - Light beacon unlit

Former Notice - 1170(T)/2019 is cancelled

Parks Victoria Notice 121(T)/2019, 285(T)/2019

The starboard lateral light beacon, *Fl(2)G.5s 5m 4M* (37° 56'.48 S 144° 59'.56 E), is unlit; a starboard lateral light buoy, *Fl(2)G.5s*, exists in position 37° 56'.51 S 144° 59'.53 E.

Chart temporarily affected - Aus 143 - Aus 155

42(T)/2020 AUSTRALIA - VICTORIA - Port Phillip - Brighton - Obstruction

Parks Victoria Notice 296(T)/2018

An obstruction marked by a buoy exists in position 37° 54'.44 S 144° 58'.95 E.

Chart temporarily affected - Aus 155

219(T)/2020 AUSTRALIA - VICTORIA - Portland Bay - Scientific instruments

Maritime Safety Victoria Notice 79(T)/2020

Subsurface scientific instruments exist 5m below the surface in the following positions:

38° 16'.05 S 141° 50'.82 E

38° 16'.10 S 141° 51'.17 E

38° 16'.14 S 141° 51'.56 E.

Chart temporarily affected - Aus 140 - Aus 349

888(T)/2020 AUSTRALIA - VICTORIA - Cape Duquesne - Scientific instruments

Deakin University

Three special spherical light buoys, *Fl.Y.2-5s*, exist in the vicinity of 38°21'.70 S, 141°16'.53 E.

Mariners are advised to navigate with caution in the area.

Chart temporarily affected - Aus 348

895(P)/2020 AUSTRALIA - VICTORIA - Port Welshpool to McLoughlins Entrance - Shoaling

Gippsland Ports

Latest survey shows shoaling and channel realignment in the following channels:

Middle Ground Channel (38° 42'.5 S 146° 31'.5 E)

Snake Channel (38° 44'.4 S 146° 37'.0 E)

Midge Channel (38° 41'.8 S 146° 39'.9 E)

Port Albert Channel (38° 41'.5 S 146° 41'.2 E)

Kate Kearney Channel (38° 41'.7 S 146° 43'.0 E)

Kate Kearney Entrance (38° 41'.5 S 146° 45'.1 E)

Tarra Channel (38° 40'.8 S 146° 45'.7 E)

Boat Harbour Channel (38° 40'.4 S 146° 48'.4 E)

Pelican Channel (38° 39'.3 S 146° 48'.7 E)

Manns Beach Channel (38° 38'.8 S 146° 47'.4 E)

Manns Channel (38° 40'.5 S 146° 49'.6 E)

Oyster Bed Channel (38° 38'.5 S 146° 51'.2 E)

McLoughlins Entrance (38° 37'.8 S 146° 53'.0 E).

Mariners are advised to navigate with caution in the area.

Charts will be updated in due course.

Chart which will be affected - Aus 181

35(T)/2021 AUSTRALIA - VICTORIA - Port Phillip - Wyndham Marina - Light buoy off station
Parks Victoria Notice 357(T)/2020

The special light buoy, *Fl. Y. 6s* (37° 57'.85 S 144° 42'.76 E), is off station.

Mariners are advised to navigate with caution in the area.

Chart temporarily affected - Aus 155

350(T)/2021 AUSTRALIA - VICTORIA - Port Phillip - Corio Bay - Scientific instruments
Victorian Regional Channels Authority Notice 93(T)/2021

Scientific instruments exist on the seabed in the following positions:

38° 05'.17 S 144° 23'.31 E

38° 05'.35 S 144° 24'.20 E.

Chart temporarily affected - Aus 153 - Aus 157

409(T)/2021 AUSTRALIA - VICTORIA - Port Phillip - Corio Bay - Scientific instrument
Victorian Regional Channels Authority Notice 310(T)/2019

A scientific instrument marked by a special light buoy, *Fl. Y.*, exists on the seabed in position 38° 05'.07 S 144° 23'.25 E.

Chart temporarily affected - Aus 157

413(T)/2021 AUSTRALIA - VICTORIA - Port Phillip - Corio Bay - Light buoys; AIS
Victorian Regional Channels Authority Notices 16(T)/2018, 17(T)/2018, 72(T)/2018

Starboard lateral pillar light buoys exist as follows:

<i>Position</i>	<i>Remarks</i>
38° 06'.01 S 144° 22'.92 E	<i>F. Iso. G. 3s TB2</i>
38° 06'.65 S 144° 22'.34 E	<i>F. Iso. G. 3s TB1</i>

Starboard lateral virtual AIS also exist at the above positions.

Chart temporarily affected - Aus 157

416(T)/2021 AUSTRALIA - VICTORIA - Portland - Shoaling
Port of Portland Notice 56(T)/2021

Shoaling, with least depth 7.3m, extends 90m to the west of the main breakwater (38° 20'.65 S 141° 37'.40 E).

Mariners are advised to navigate with caution in the area.

Chart temporarily affected - Aus 140

493(T)/2021 AUSTRALIA - VICTORIA - Barwon Head - Light buoy withdrawn eastwards
Parks Victoria Notice 166(T)/2020

The special light buoy, *Fl. Y. 5s* (38° 17'.95 S 144° 32'.65 E), has been temporarily withdrawn.

Chart temporarily affected - Aus 143

542(T)/2021 AUSTRALIA - VICTORIA - Port Phillip - Sandringham - Dredging operations
Parks Victoria Notice 143(T)/2021

Dredging operations are in progress in the vicinity of position 37° 58'.0 S 145° 00'.2 E.

A dredge and support vessels are on site.

The dredge material will be deposited for beach renourishment along Edward Street Beach (37° 57'.35 S 145° 00'.34 E) and in Half Moon Bay (37° 58'.13 S 145° 00'.64 E).

All hazards to navigation will be marked by appropriate lights and shapes.

Mariners are advised to navigate with caution in the area.

Chart temporarily affected - Aus 143 - Aus 155

579(T)/2021 AUSTRALIA - VICTORIA - Port Phillip - Altona - Jetty

Parks Victoria Notice 168(T)/2021

The jetty has been damaged and a portion of the jetty has washed ashore and is in position 37° 52'.27 S 144° 49'.81 E.

Submerged or semi submerged hazards may exist in the area.

The jetty is closed to all vessels and mariners are advised to navigate with caution in the area.

Chart temporarily affected - Aus 143 - Aus 155

618(T)/2021 AUSTRALIA - VICTORIA - Port Phillip - Half Moon Bay - Obstructions

Parks Victoria Notices 215(T), 218(T)/2021

The jetty (37° 58'.09 S 145° 00'.58 E) has been demolished. Shoaling and obstructions may exist in the area north of the jetty.

Mariners are advised to navigate with caution in the area.

Chart temporarily affected - Aus 155

664(T)/2021 AUSTRALIA - VICTORIA - Western Port - Stony Point to Sandy Point - Shoaling

Victorian Regional Channels Authority Notice 199/2019

Shoaling exists in the vicinity of the following positions:

<i>Position</i>	<i>Least depth</i>	<i>Remarks</i>
38°25'.5 S 145° 13'.8 E	13.6m	Extending up to 100m into shipping channel
38°22'.8 S 145° 14'.7 E	13.2m	Extending up to 50m into shipping channel
38°21'.9 S 145° 14'.4 E	13.5m	Extending up to 40m into shipping channel
38°22'.1 S 145° 14'.3 E	13.8m	Extending up to 10m into shipping channel

Mariners are advised to navigate with caution in the area.

Chart temporarily affected - Aus 151

665(T)/2021 AUSTRALIA - VICTORIA - Western Port - Hanns Inlet - Light beacons unlit

HMAS Cerberus

The light beacons, *Fl.G.8s* (38° 23'.26 S 145° 13'.95 E) and *Fl.R.8s* (38° 23'.30 S 145° 13'.94 E) are unlit.

Chart temporarily affected - Aus 151

859(T)/2021 AUSTRALIA - VICTORIA - Western Port - Crib Point - Exclusion zone

Maritime Safety Victoria Notice 265(T)/2021

The Ex-HMAS OTAMA (Oberon class submarine) located 800 metres north of Crib Point jetty has been relocated to position 38° 20'.66 S 145° 13'.27 E, with a 200 metre exclusion zone.

A 200 metre exclusion zone remains at its previous location (38° 20'.48 S 145° 13'.45 E).

Mariners are advised to navigate with caution in the area.

Chart temporarily affected - Aus 151

995(P)/2021 AUSTRALIA - VICTORIA - Port Albert - Nav aids to be withdrawn

Gippsland Ports Notice 9(P)/2021

Nav aids in the channel between positions 38° 41'.04 S 146° 38'.02 E and 38° 39'.43 S 146° 39'.52 E will be withdrawn.

Eight new buoys will be established between positions 38° 41'.04 S 146° 38'.02 E and 38° 40'.17 S 146° 38'.70 E.

Chart which will be affected - Aus 181

1004(T)/2021 AUSTRALIA - VICTORIA - Port Phillip - Brighton - Light buoy unlit

Parks Victoria Notice 324(T)/2021

The special light buoy, *Fl(3)Y.10s R2* (37° 54'.55 S 144° 56'.33 E), is unlit.

Chart temporarily affected - Aus 155

1032(T)/2021 AUSTRALIA - VICTORIA - Port Phillip - Chelsea - Beacon destroyed

Parks Victoria Notice 333(T)/2021

The special beacon (38° 03'.47 S 145° 06'.74 E) has been destroyed.

Chart temporarily affected - Aus 143

1033(T)/2021 AUSTRALIA - VICTORIA - Port Phillip - Beaumaris Bay - Buoy

Parks Victoria Notice 353(T)/2021

A special buoy exists in position 37° 59'.50 S 145° 03'.56 E.

Chart temporarily affected - Aus 155

81(T)/2022 AUSTRALIA - VICTORIA - Geelong - Survey

Ports Victoria Notice 025(T)/2022

The jack up barge *JUB II* and support vessel *Taurus (MB 209)* are conducting geotech operations in the vicinity of position 38° 05'.32 S 144° 23'.34 E.

All vessels will display appropriate lights and shapes and will monitor VHF Ch 12/16. A 100 m exclusion zone around barge is requested.

Mariners are advised to navigate with caution in the area.

Chart temporarily affected - Aus 157

90(T)/2022 AUSTRALIA - VICTORIA - Western Port - Exclusion zone

Ports Victoria NTM 015-22

All unauthorised vessels within Port of Hastings waters are prohibited from entering within 100 metres of the vessel *SUI SO FRONTIER* during transit and while berthed.

Mariners are advised to navigate with caution in the area.

Chart temporarily affected - Aus 151 - Aus 801 - Aus 4709 (INT 709)

294(T)/2022 AUSTRALIA - VICTORIA - Port Phillip - Point Wilson - Exclusion zone

Former Notice - 1078(T)/2021 is cancelled

Victorian Regional Channels Authority Notice 239/2020, Parks Victoria Notice 104/2022

A 300m exclusion zone exists outwards from the centreline of Point Wilson Pier (38° 05'.54 S 144° 31'.48 E). It is marked by special light buoys, *Iso.2s*, in the following positions:

38° 05'.51 S 144° 30'.73 E

38° 05'.68 S 144° 31'.32 E

38° 05'.84 S 144° 31'.86 E

38° 05'.89 S 144° 32'.45 E

38° 05'.64 S 144° 32'.48 E

38° 05'.55 S 144° 32'.04 E

38° 05'.38 S 144° 31'.47 E

38° 05'.20 S 144° 30'.93 E.

Only vessels involved in the remediation works are permitted to enter the area.

Mariners are advised to navigate with caution in the area.

Chart temporarily affected - Aus 143 - Aus 157

295(T)/2022 AUSTRALIA - VICTORIA - Port Phillip - Wyndham Marina - Light unlit

Parks Victoria Notice 102(T)/2022

The light, *WRG 3M* (37° 58'.15 S 144° 42'.52 E), is unlit.

Chart temporarily affected - Aus 143 - Aus 155

630(T)/2022 AUSTRALIA - VICTORIA - Cape Duquesne - Scientific instruments

Maritime Safety Victoria Notice 165(T)/2019

Scientific instruments exist as follows:

<i>Position</i>	<i>Remarks</i>
38° 24'.52 S 141° 16'.26 E	25m below surface
38° 24'.24 S 141° 17'.48 E	84m below surface
38° 24'.10 S 141° 18'.04 E	76m below surface
38° 23'.97 S 141° 18'.60 E	69m below surface
38° 23'.83 S 141° 19'.16 E	70m below surface
38° 23'.69 S 141° 19'.73 E	67m below surface
38° 23'.56 S 141° 20'.25 E	67m below surface
38° 23'.44 S 141° 20'.73 E	61m below surface
38° 23'.34 S 141° 21'.18 E	50m below surface
38° 23'.24 S 141° 21'.57 E	30m below surface
38° 23'.15 S 141° 21'.91 E	18m below surface.

Chart temporarily affected - Aus 140 - Aus 348 - Aus 349

747(T)/2022 AUSTRALIA - VICTORIA - Ninety Mile Beach - Traffic separation scheme southwestwards

Australian Maritime Safety Authority

Decommissioning of oil and gas infrastructure will take place at Blackback Prod Well (38° 32'.42 S 148° 33'.24 E), Gudgeon Well (38° 30'.82 S 148° 28'.17 E) and Terakihi Well (38° 30'.27 S 148° 32'.89 E).

New temporary shipping fairways and a separation zone have been established to keep transiting ships away from decommissioning activities. The new shipping fairways and separation zone are bound by the following positions:

Northeast bound lane	38° 36'.941 S	148° 45'.842 E
	38° 39'.507 S	148° 48'.047 E
	38° 44'.600 S	148° 23'.000 E
	38° 42'.034 S	148° 20'.795 E.
Southwest bound lane	38° 33'.407 S	148° 42'.545 E
	38° 35'.750 S	148° 44'.746 E
	38° 40'.844 S	148° 19'.699 E
	38° 38'.500 S	148° 17'.500 E.
Separation zone	38° 35'.750 S	148° 44'.746 E
	38° 36'.941 S	148° 45'.842 E
	38° 42'.034 S	148° 20'.795 E
	38° 40'.844 S	148° 19'.699 E.

The fairways and separation zone come into effect on 1 August 2022 at 0000 UTC and will remain in place until further notice.

Mariners should follow the appropriate traffic lane and navigate in the general direction of traffic flow for that lane. They should, as far as practicable, keep clear of the separation zone.

Due to an increased risk of collision, particularly with vessels that may be restricted in their ability to manoeuvre, mariners should keep a good look out and take early action to avoid collisions.

Note: For e-notice users, please see full edition for map.

IMO-adopted Traffic Separation Scheme (TSS) Bass Strait, Victoria, and temporary shipping fairway proposal



Australian Government
Australian Maritime Safety Authority

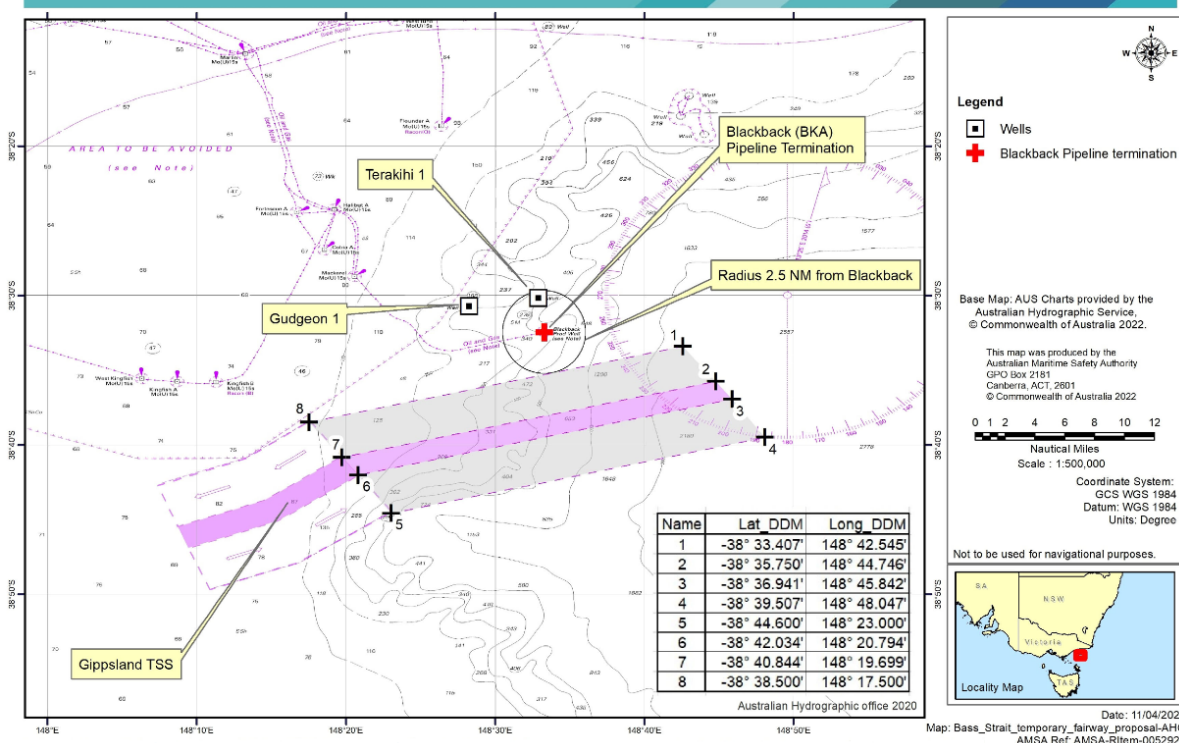


Chart temporarily affected - Aus 357 - Aus 487

754(T)/2022 AUSTRALIA - BASS STRAIT - Racon non operational
Australian Maritime Safety Authority Auscoast Warning 171/2021

The racon at the *Flounder A* platform (38° 18'.65 S 148° 26'.36 E) is non operational.

Chart temporarily affected - Aus 357 - Aus 487

804(T)/2022 AUSTRALIA - VICTORIA - Western Port - Warneet - Jetty closed
Parks Victoria Notice 327/2022

The jetty (38° 13'.66 S 145° 18'.35 E) has been deemed unsafe for public use and has been closed.

Temporary berthing is available at the floating pontoon.

Chart temporarily affected - Aus 151

914(T)/2022 AUSTRALIA - VICTORIA - Port Phillip - Clifton Springs - Artificial reef
Parks Victoria Notice 368(T)/2022

Works to establish an artificial reef are in progress in the vicinity of position 38° 09'.06 S 144° 33'.88 E.

Mariners are advised to navigate with caution in the area.

Chart temporarily affected - Aus 157

1047(T)/2022 AUSTRALIA - VICTORIA - Venus Bay - Scientific instrument
Safe Transport Victoria Notice 417(T)/2022

A special light buoy, *Fl.Y.2-5s*, exists in position 38° 39'.29 S 145° 42'.25 E.

Chart temporarily affected - Aus 801

49(T)/2023 AUSTRALIA - BASS STRAIT - Scientific instrument

Marine and Safety Tasmania Notice M437(T)/2022

A scientific instrument exists on the seabed in position 41° 02'.15 S 146° 22'.03 E.

Mariners are advised that ground tackle should not be used in the area.

Chart temporarily affected - Aus 164 - Aus 799

81(T)/2023 AUSTRALIA - VICTORIA - Port Phillip - Queenscliff - Light beacon unlit

Parks Victoria Notice 491(T)/2022

The light beacon, *Q.R* (38° 16'.06 S 144° 40'.59 E), is unlit; a port buoy, *Q.R*, without topmark exists in situ.

Chart temporarily affected - Aus 144

82(T)/2023 AUSTRALIA - VICTORIA - Port Phillip - Scientific instruments

Former Notice - 40(T)/2022 is cancelled

Victorian Ports Corporation (Melbourne) Notice 014(T)/2023

Special light buoys, *Fl.Y.2-5s*, exist in the following positions:

37° 58'.72 S 144° 59'.73 E

37° 59'.10 S 144° 46'.51 E

38° 08'.16 S 144° 45'.18 E

38° 09'.73 S 145° 03'.26 E

38° 18'.09 S 144° 52'.36 E.

Chart temporarily affected - Aus 143 - Aus 155 - Aus 157

112(T)/2023 AUSTRALIA - VICTORIA - Ninety Mile Beach - Virtual AIS southeastwards

Australian Maritime Safety Authority

Special virtual AIS have been established in the Gippsland region to denote an area of oil and gas decommissioning work in the following positions:

38° 23'.54 S 148° 36'.38 E

38° 24'.59 S 148° 30'.93 E

38° 25'.75 S 148° 25'.49 E

38° 29'.10 S 148° 36'.38 E

38° 31'.31 S 148° 25'.49 E

38° 34'.65 S 148° 36'.38 E

38° 35'.76 S 148° 30'.93 E

38° 36'.87 S 148° 25'.49 E.

Transiting ships are requested to keep clear of the area marked by the special virtual AIS.

ANTM 747(T)/2022 refers.

Chart temporarily affected - Aus 357 - Aus 487

152(T)/2023 AUSTRALIA - VICTORIA - Cape Nelson - Light range reduced

Australian Maritime Safety Authority Auscoast Warning 33/2023

The range of the light (38° 25'.88 S 141° 32'.60 E), has been altered to *19M*.

Chart temporarily affected - Aus 140 - Aus 348 - Aus 349

154(T)/2023 AUSTRALIA - VICTORIA - Port Campbell - Subsea operations southwards

Beach Energy Limited

Vessel *Skandi Acergy* and a ROV is conducting subsea construction operations in an area bounded by the following positions:

39° 13'.48 S 142° 49'.60 E

39° 15'.06 S 142° 54'.21 E

39° 13'.62 S 142° 55'.12 E

39° 11'.52 S 142° 51'.67 E.

Mariners are advised to navigate with caution and to keep clear of the area.

Chart temporarily affected - Aus 349

156(T)/2023 AUSTRALIA - VICTORIA - Port Campbell to Cape Woolamai - Subsea operations southwards
Beach Energy Limited

Vessel *MMA Coral* and a ROV are conducting inspection works on subsea infrastructure between the following positions:

38° 38'.08 S 142° 58'.56 E

39° 14'.24 S 142° 54'.12 E

and;

38° 33'.54 S 145° 29'.22 E

39° 50'.43 S 145° 49'.01 E.

Mariners are advised to navigate with caution in the area.

Chart temporarily affected - Aus 349 - Aus 487 - Aus 801

160(T)/2023 AUSTRALIA - VICTORIA - Port Fairy Bay - Scientific instrument
Maritime Safety Victoria Notice 127(T)/2019

A special spherical light buoy, *Fl.Y.2-5s* exists in position 38° 22'.91 S 142° 17'.23 E.

Chart temporarily affected - Aus 349

162(T)/2023 AUSTRALIA - VICTORIA - Port Phillip - South Channel - Shoaling; virtual AIS
Ports Victoria Notice 324(T)/2022

Shoaling exists in the South Channel and is marked by special virtual AIS as follows:

<i>Position</i>	<i>Remarks</i>
38° 17'.64 S 144° 41'.14 E	TB3
38° 17'.75 S 144° 41'.65 E	TB4
38° 18'.05 S 144° 43'.26 E	TB5
38° 18'.20 S 144° 44'.38 E	TB6
38° 19'.07 S 144° 48'.63 E	TB7
38° 19'.74 S 144° 54'.08 E	TB8.

Vessels with a draught greater than 13.5m are advised to navigate as follows:

Inbound north of TB3 and TB4 and south of TB5, TB6, TB7 and TB8

Outbound south of TB8, TB7 and TB6 and north of TB5, TB3 and TB4.

Mariners are advised to navigate with caution in the area.

Chart temporarily affected - Aus 143 - Aus 144

248(T)/2023 AUSTRALIA - VICTORIA - Port Phillip - Mornington - Light beacon removed
Former Notice - 915(T)/2022 is cancelled

Parks Victoria Notice 427(T)/2021, 117(T)/2023

The west cardinal light beacon, *VQ(9)10s* (38° 13'.42 S 145° 01'.58 E), has been removed.

Chart temporarily affected - Aus 143

298(T)/2023 AUSTRALIA - VICTORIA - Corner Inlet - Scientific instruments eastwards
RPS Group

Subsurface scientific instruments, 20m below the surface, exist in positions 38° 47'.50 S 147° 03'.90 E and 38° 51'.30 S 147° 17'.10 E.

Chart temporarily affected - Aus 357 - Aus 487 - Aus 802

TASMANIA

627(T)/2016 AUSTRALIA - TASMANIA - Pipe Clay Head to Pitt Water - Scientific instruments

Former Notice - 309(T)/2014 is cancelled

University of Tasmania

Subsurface scientific instruments exist in the following positions:

42° 48'.25 S 147° 29'.91 E
42° 48'.29 S 147° 31'.42 E
42° 48'.43 S 147° 30'.02 E
42° 49'.18 S 147° 34'.71 E
42° 50'.70 S 147° 33'.57 E
42° 50'.74 S 147° 35'.11 E
42° 50'.90 S 147° 36'.91 E
42° 51'.05 S 147° 32'.08 E
42° 51'.33 S 147° 35'.89 E
42° 51'.69 S 147° 34'.85 E
42° 51'.82 S 147° 30'.92 E
42° 51'.82 S 147° 33'.36 E
42° 52'.35 S 147° 32'.10 E
42° 52'.70 S 147° 36'.29 E
42° 52'.94 S 147° 34'.16 E
42° 53'.24 S 147° 31'.16 E
42° 53'.79 S 147° 32'.67 E
42° 53'.88 S 147° 37'.33 E
42° 54'.20 S 147° 35'.44 E
42° 54'.37 S 147° 30'.53 E
42° 54'.47 S 147° 40'.80 E
42° 54'.67 S 147° 33'.87 E
42° 54'.92 S 147° 40'.78 E
42° 55'.13 S 147° 31'.80 E
42° 55'.36 S 147° 40'.76 E
42° 55'.81 S 147° 40'.74 E
42° 56'.99 S 147° 39'.68 E
42° 57'.04 S 147° 38'.01 E
42° 57'.15 S 147° 39'.22 E
42° 57'.15 S 147° 37'.41 E
42° 57'.28 S 147° 36'.79 E
42° 57'.40 S 147° 36'.20 E
42° 57'.51 S 147° 35'.59 E
42° 57'.62 S 147° 34'.99 E
42° 57'.73 S 147° 34'.44 E
42° 57'.86 S 147° 33'.85 E
42° 57'.96 S 147° 33'.30 E.

Chart temporarily affected - Aus 171 - Aus 796

263(T)/2018 AUSTRALIA - TASMANIA - Devonport - Shoaling

HydroSurvey Australia

Shoaling exists in the Mersey River between positions 41° 11'.20 S 146° 21'.98 E and 41° 11'.48 S 146° 22'.10 E.

Mariners are advised to navigate with caution in the area.

Chart temporarily affected - Aus 164

183(P)/2020 AUSTRALIA - TASMANIA - North West Bay - Barretta - Infrastructure

A Boon

The marina pontoons have been extended to seaward (43° 02'.95 S 147° 16'.14 E).

Mariners are advised to navigate with caution in the area.

Charts will updated in due course.

Chart which will be affected - Aus 171 - Aus 174

522(T)/2020 AUSTRALIA - TASMANIA - D'Entrecasteaux Channel - Tower Bay - Harbour works; light buoys
Marine and Safety Tasmania Notice M98/2020

Mooring works are in progress, marked by special light buoys as follows:

<i>Position</i>	<i>Remarks</i>
43° 23'.38 S 147° 02'.34 E	<i>Fl. Y. 4s</i>
43° 23'.46 S 147° 02'.27 E	<i>Fl. Y. 4s</i>
43° 23'.36 S 147° 01'.98 E	
43° 23'.28 S 147° 02'.05 E	

Chart temporarily affected - Aus 173

682(P)/2020 AUSTRALIA - TASMANIA - Franklin Sound - Shoaling
EOMAP

Latest survey shows shoaler depths than those charted may exist in an area bounded by the following positions:

40° 20'.41 S 148° 23'.65 E
40° 13'.57 S 148° 27'.46 E
40° 10'.81 S 148° 23'.17 E
40° 11'.66 S 148° 16'.60 E
40° 14'.42 S 148° 01'.81 E
40° 23'.48 S 147° 59'.63 E.

Mariners are advised to navigate with caution in the area.

Charts will be updated in due course.

Chart which will be affected - Aus 179 - Aus 798 - Aus 800

733(T)/2020 AUSTRALIA - TASMANIA - Burnie - Harbour works

Former Notice - 47(T)/2019 is cancelled

Marine and Safety Tasmania Notice M217/2018, Toll Group

Harbour works associated with the extension of the wharf at berth 5 (41° 03'.04 S 145° 54'.70 E) are in progress.

Mariners are advised to navigate with caution in the area.

Chart temporarily affected - Aus 163

1017(T)/2020 AUSTRALIA - TASMANIA - Pitt Water - Wreck

Marine and Safety Tasmania Notice M213/2020

A wreck marked by a special spar buoy exists in position 42° 50'.19 S 147° 36'.58 E.

Mariners are advised to navigate with caution in the area.

Chart temporarily affected - Aus 796

510(T)/2021 AUSTRALIA - TASMANIA - Burnie - Scientific instrument northeastwards

Marine and Safety Tasmania Notice M138/2021

A special light buoy, *Fl. Y.*, exists in position 41° 01'.36 S 146° 05'.38 E.

Chart temporarily affected - Aus 799

673(T)/2021 AUSTRALIA - TASMANIA - Maria Island - Scientific instruments

Marine and Safety Tasmania

Subsurface scientific instruments exist on the seabed in the following positions:

42° 40'.08 S 147° 58'.04 E
42° 39'.99 S 147° 58'.60 E
42° 39'.91 S 147° 59'.16 E
42° 39'.82 S 147° 59'.72 E
42° 39'.74 S 148° 00'.28 E
42° 39'.08 S 148° 10'.40 E

42° 39'.28 S 148° 10'.92 E
42° 39'.48 S 148° 11'.44 E
42° 39'.68 S 148° 11'.96 E
42° 39'.88 S 148° 12'.49 E
42° 40'.08 S 148° 13'.01 E
42° 40'.28 S 148° 13'.53 E
42° 40'.48 S 148° 14'.05 E
42° 40'.68 S 148° 14'.57 E
42° 40'.88 S 148° 15'.10 E
42° 41'.08 S 148° 15'.62 E
42° 41'.28 S 148° 16'.14 E
42° 41'.48 S 148° 16'.66 E
42° 41'.68 S 148° 17'.18 E
42° 41'.88 S 148° 17'.71 E
42° 42'.08 S 148° 18'.23 E
42° 42'.28 S 148° 18'.75 E
42° 42'.48 S 148° 19'.27 E
42° 42'.68 S 148° 19'.79 E
42° 42'.87 S 148° 20'.32 E
42° 43'.07 S 148° 20'.84 E
42° 43'.26 S 148° 21'.26 E.

Chart temporarily affected - Aus 766 - Aus 797

677(T)/2021 AUSTRALIA - TASMANIA - North West Bay - Mooring area

Marine and Safety Tasmania Notice M106/2021

A mooring area, marked by special light buoys, exists in an area bounded by the following positions:

43° 02'.75 S 147° 17'.91 E
43° 02'.66 S 147° 18'.04 E
43° 02'.74 S 147° 18'.15 E
43° 02'.82 S 147° 18'.00 E.

Mariners are advised to navigate with caution in the area.

Chart temporarily affected - Aus 171

722(T)/2021 AUSTRALIA - TASMANIA - Port Dalrymple - Bell Bay - Harbour works

Marine and Safety Tasmania Notice M207/2021

Remediation works are in progress at Bell Bay Berth 6 (41° 08'.39 S 146° 51'.14 E).

Mariners are advised to navigate with caution in the area.

Chart temporarily affected - Aus 167

861(T)/2021 AUSTRALIA - TASMANIA - Devonport - Wreck

Tasmanian Ports Corporation

A wreck, least depth 9.3m exists in position 41° 10'.03 S 146° 22'.07 E.

Mariners are advised to navigate with caution in the area.

Chart temporarily affected - Aus 164

93(T)/2022 AUSTRALIA - TASMANIA - Perkins Island to Rocky Cape - Scientific instruments

Former Notice - 45(T)/2022 is cancelled

Marine and Safety Tasmania Notice M354(T)/2021

Scientific instruments, 5m below the surface, exist in the following positions:

40° 44'.04 S 145° 09'.79 E
40° 45'.80 S 145° 13'.15 E
40° 48'.18 S 145° 18'.94 E
40° 50'.58 S 145° 26'.32 E.

Chart temporarily affected - Aus 790 - Aus 799 - Aus 4709 (INT 709)

856(T)/2022 AUSTRALIA - TASMANIA - Huon River - Deep Bay - Wreck
Marine and Safety Tasmania M339(T)/2022

A stranded wreck exists in position 43° 12'.73 S 147° 06'.39 E.

Mariners are advised to navigate with caution in the area.

Chart temporarily affected - Aus 173 - Aus 795

916(T)/2022 AUSTRALIA - TASMANIA - Devonport - Virtual AIS
Marine and Safety Tasmania Notice M373(T)/2022

A reduced width of the channel is marked by virtual AIS as follows:

<i>Position</i>	<i>Remarks</i>
41° 10'.43 S 146° 21'.85 E	starboard lateral AIS
41° 10'.45 S 146° 21'.93 E	port lateral AIS
41° 10'.45 S 146° 21'.84 E	starboard lateral AIS
41° 10'.50 S 146° 21'.82 E	starboard lateral AIS
41° 10'.51 S 146° 21'.91 E	port lateral AIS
41° 10'.57 S 146° 21'.89 E	port lateral AIS.

Chart temporarily affected - Aus 164

1002(T)/2022 AUSTRALIA - TASMANIA - Penguin - Scientific instrument northwards
Marine and Safety Tasmania Notice M401(T)/2022

A scientific instrument marked by an orange buoy exists in position 41° 02'.13 S 146° 04'.89 E.

Chart temporarily affected - Aus 487 - Aus 799

83(T)/2023 AUSTRALIA - TASMANIA - Devonport - Harbour works
Marine and Safety Tasmania Notice M10(T)/2023

Demolition works are in progress in the vicinity of berth 3E in an area bounded by the coast and the following positions:

41° 11'.30 S 146° 22'.14 E
41° 11'.32 S 146° 22'.09 E
41° 11'.15 S 146° 21'.97 E
41° 11'.11 S 146° 21'.97 E
41° 11'.07 S 146° 21'.99 E
41° 10'.94 S 146° 21'.98 E
41° 10'.94 S 146° 22'.00 E.

Vessels will display appropriate lights and shapes and will monitor VHF Ch 14.

Mariners are advised not to enter the works area unless they are required to utilise the swing basin. These vessels must obtain approval from Devonport VTS prior to arrival and departure.

Chart temporarily affected - Aus 164

114(T)/2023 AUSTRALIA - TASMANIA - Furneaux Group - Babel Island - Wreck
Guardian Geomatics

A wreck, least depth 29₅m, exists in position 39° 51'.84 S 148° 20'.50 E.

Chart temporarily affected - Aus 487 - Aus 800

167(T)/2023 AUSTRALIA - TASMANIA - King Island - Grassy Harbour - Platform, submarine cable, prohibited area
Marine and Safety Tasmania Notice M19/2021

A lit platform, F, exists in position 40° 03'.97 S 144° 03'.53 E.

A submarine power cable exists between positions 40° 03'.97 S 144° 03'.53 E and 40° 03'.91 S 144° 03'.53 E.

An entry prohibited area, with radius 125m, exists centred on position 40° 03'.97 S 144° 03'.53 E.

Mariners are advised to navigate with caution in the area.

Chart temporarily affected - Aus 179

169(P)/2023 AUSTRALIA - TASMANIA - Rocky Cape to East Sandy Point - Shoaling

Australian Hydrographic Office

Latest survey indicates shoaler depths than those charted may exist in an area bounded by the high water line and the following positions:

40° 42'.39 S 145° 05'.11 E
40° 45'.45 S 145° 20'.92 E
40° 56'.19 S 145° 49'.10 E
41° 04'.76 S 146° 11'.06 E
41° 06'.47 S 146° 28'.51 E
41° 01'.97 S 146° 42'.97 E
40° 56'.62 S 146° 55'.07 E
40° 39'.89 S 147° 58'.89 E.

Mariners are advised to navigate with caution in the area.

Electronic Navigation Charts (ENCs) have been updated, Paper Charts will be updated in due course.

Chart which will be affected - Aus 163 - Aus 164 - Aus 167 - Aus 179 - Aus 487 - Aus 790 - Aus 798 - Aus 799 - Aus 800

171(T)/2023 AUSTRALIA - TASMANIA - Round Hill Point to Rocky Cape - Scientific instruments northwards

Maritime and Safety Tasmania Notice M60(T)/2023

Special light buoys, *Fl. Y. 3s*, exist in the following positions:

40° 19'.57 S 145° 21'.58 E
40° 29'.00 S 145° 28'.48 E
40° 33'.72 S 145° 31'.94 E
40° 35'.71 S 145° 33'.40 E
40° 38'.43 S 145° 35'.41 E
40° 40'.79 S 145° 37'.14 E
40° 42'.39 S 145° 26'.12 E
40° 43'.14 S 145° 38'.88 E
40° 47'.85 S 145° 42'.37 E
40° 51'.62 S 145° 56'.13 E
40° 52'.56 S 145° 45'.86 E
40° 57'.26 S 145° 49'.36 E.

Chart temporarily affected - Aus 790 - Aus 799

172(P)/2023 AUSTRALIA - TASMANIA - Stanley Harbour - Shoaling

Veris

Latest survey indicates shoaler depths than those charted may exist in an area bounded by the following positions:

40° 46'.03 S 145° 18'.78 E
40° 46'.33 S 145° 18'.67 E
40° 46'.22 S 145° 18'.28 E.

The most significant shoals are as follows:

<i>Position</i>	<i>Depth</i>
40° 46'.19 S 145° 18'.20 E	4.3m
40° 46'.27 S 145° 18'.16 E	4.8m.

Mariners are advised to navigate with caution in the area.

Charts will be updated in due course.

Chart which will be affected - Aus 790

216(T)/2023 AUSTRALIA - TASMANIA - Burnie - Drilling operations

Marine and Safety Tasmania Notice M71/2023

Barge *Sea Jack* is conducting drilling operations in an area bounded by the following positions:

41° 03'.46 S 145° 54'.75 E
41° 03'.37 S 145° 55'.13 E
41° 02'.93 S 145° 54'.97 E
41° 03'.01 S 145° 54'.60 E.

A 60m radius prohibited area exists around the barge. Vessels must not enter the prohibited area unless they have been granted approval by Burnie VTS. The barge will broadcast its position by AIS.

The barge will display appropriate lights and shapes.

Mariners are advised to navigate with caution in the area.

Chart temporarily affected - Aus 163

251(T)/2023 AUSTRALIA - TASMANIA - Port Sorell - Light unlit

Marine and Safety Tasmania Notice M102(T)/2023

The light, *Iso.2s 3M* (41° 08'.13 S 146° 32'.57 E), is unlit.

Chart temporarily affected - Aus 799

301(T)/2023 AUSTRALIA - TASMANIA - River Derwent - Blackmans Bay - Scientific instrument

Marine and Safety Tasmania Notice M138(T)/2023

A scientific instrument exists on the seabed in position 43° 01'.26 S 147° 20'.34 E.

Mariners are advised to navigate with caution in the area

Chart temporarily affected - Aus 171 - Aus 173

PAPUA NEW GUINEA and SOUTH PACIFIC

789(T)/2018 PAPUA NEW GUINEA - Bismarck Sea - Fish aggregating devices

National Maritime Safety Authority PNG Warning 9/2018

17 fish aggregating devices exist in an area bounded by the following positions:

4° 30'.0 S 149° 55'.0 E
4° 40'.0 S 149° 55'.0 E
4° 40'.0 S 150° 45'.0 E
4° 30'.0 S 150° 45'.0 E.

Mariners are advised to navigate with caution.

Chart temporarily affected - Aus 4622 (INT 622)

286(P)/2019 PAPUA NEW GUINEA - Madang Harbour - Shoaling

LADS Flight

Latest survey shows shoaler depths than those charted may exist in an area bounded by the following positions:

05° 04'.51 S 145° 48'.06 E
05° 11'.75 S 145° 47'.82 E
05° 11'.91 S 145° 49'.61 E
05° 10'.14 S 145° 50'.36 E
05° 04'.14 S 145° 48'.99 E.

Mariners are advised to navigate with caution in the area.

Charts will be updated in due course.

Chart which will be affected - PNG 646

346(T)/2019 PAPUA NEW GUINEA - Huon Gulf - Light buoy off station

National Maritime Safety Authority PNG Notice 9(T)/2017

The isolated danger light buoy, Q(2)5s (6° 48'.38 S 146° 58'.28 E), is off station.

Chart temporarily affected - PNG 643

968(P)/2019 PAPUA NEW GUINEA - Duke of York Island - Shoaling

LADS Flight

Latest survey shows shoaler depths than those charted may exist in an area bounded by the following positions:

4° 07'.43 S 152° 28'.17 E
4° 10'.10 S 152° 30'.20 E
4° 11'.35 S 152° 30'.07 E
4° 13'.66 S 152° 28'.38 E
4° 15'.11 S 152° 25'.69 E
4° 13'.13 S 152° 22'.60 E
4° 11'.41 S 152° 23'.70 E
4° 07'.06 S 152° 23'.88 E
4° 06'.29 S 152° 24'.62 E
4° 06'.17 S 152° 25'.41 E.

Mariners are advised to navigate with caution in the area.

Charts will be updated in due course.

Chart which will be affected - Aus 545 - Aus 554 - PNG 679 - PNG 680

1110(T)/2019 PAPUA NEW GUINEA - Oreore Channel - Light buoy off station

National Maritime Safety Authority PNG Coastal Navigation Warning 39/2019

The port lateral light buoy, Q.R (10° 13'.68 S 150° 52'.78 E), is off station.

Chart temporarily affected - PNG 628

1331(T)/2019 PAPUA NEW GUINEA - Isulailai Point - Light beacon unlit
National Maritime Safety Authority PNG Warning 43/2019

The light beacon, *Fl(2)5s 17m 9M* (10° 33'.63 S 150° 41'.71 E), is unlit.

Chart temporarily affected - Aus 625 - PNG 508

516(T)/2020 PAPUA NEW GUINEA - Kimbe - Light beacon unlit
National Maritime Safety Authority PNG Notice 21(T)/2020

The light beacon, *Fl.G.5s 6m 4M No3* (5° 32'.00 S 150° 09'.56 E), is unlit.

Chart temporarily affected - PNG 674 - PNG 677

564(T)/2020 PAPUA NEW GUINEA - Dampier Strait - Nesup Channel - Light buoys off station
National Maritime Safety Authority PNG , B Cooper

The port lateral light buoy, *Fl.R.2s* (5° 53'.27 S 148° 08'.70 E), and the starboard lateral light buoy, *Fl.G.2s* (5° 53'.92 S 148° 09'.05 E), are off station.

Chart temporarily affected - PNG 673

668(T)/2020 PAPUA NEW GUINEA - Dauan Island - Light altered
HMAS *Mermaid*

The light, *Fl.R.6s* (9° 25'.38 S 142° 32'.07 E), has been temporarily altered to *F.R.*

Chart temporarily affected - Aus 841

771(T)/2020 PAPUA NEW GUINEA - Boera Head - Light unlit
National Maritime Safety Authority PNG Warning 6/2019

The light, *Fl.2-5s 33m 10M* (9° 23'.39 S 147° 00'.85 E), is unlit.

Chart temporarily affected - PNG 379 - PNG 647

826(P)/2020 PAPUA NEW GUINEA - Batumata Point - Shoaling
LADS Flight

Latest survey shows shoaler depths than those charted may exist in and around the islands and reefs in the area between Galovi (Howard) Reef (10° 11'.1 S 148° 08'.7 E) and Eunoro Island (10° 23'.6 S 149° 27.3 E).

Mariners are advised to navigate with caution in the area.

Charts will be updated in due course.

Chart which will be affected - PNG 506 - PNG 507 - PNG 623

963(T)/2020 PAPUA NEW GUINEA - Caution Bay - Light beacon damaged
National Maritime Safety Authority PNG Notice 39/2020

The light beacon, *Fl.Bu.2s 8M RL2* (9° 17'.98 S 146° 58'.19 E), is damaged and unlit.

Chart temporarily affected - PNG 647 - PNG 648

116(P)/2021 PAPUA NEW GUINEA - Kavieng to Neitab Island - Shoaling
LADS Flight

Latest survey shows shoaler depths than those charted may exist in an area bounded by the coast and the following positions:

2° 22'.61 S 150° 09'.71 E
2° 21'.43 S 150° 08'.54 E

2° 20'.33 S 150° 09'.36 E
2° 18'.98 S 150° 11'.37 E
2° 18'.08 S 150° 15'.72 E
2° 21'.25 S 150° 23'.71 E
2° 27'.18 S 150° 31'.04 E
2° 34'.90 S 150° 35'.68 E
2° 36'.12 S 150° 42'.35 E
2° 36'.96 S 150° 42'.41 E
2° 36'.40 S 150° 35'.77 E
2° 40'.83 S 150° 31'.32 E.

Shoaler depths may also exist between the Kavieng coast (2° 35'.21 S 150° 47'.31 E) and the islands (Nusa, Nusalik and Nago).

Mariners are advised to navigate with caution in the area.

Charts will be updated in due course.

Chart which will be affected - PNG 392 - PNG 393 - PNG 543 - PNG 666

118(T)/2021 PAPUA NEW GUINEA - Madehas Island - Light unlit

National Maritime Safety Authority PNG

The light, *Fl. 10s 137m 16M* (5° 27'.63 S 154° 38'.06 E), is unlit.

Chart temporarily affected - Aus 399 - Aus 4604 (INT 604) - Aus 4622 (INT 622) - PNG 397 - PNG 684

481(T)/2021 PAPUA NEW GUINEA - Caution Bay - Light beacon unlit

National Maritime Safety Authority PNG Coastal Navigation Warning 9/2021

The light beacon, *Fl. G. 3s 6M* (9° 18'.54 S 146° 57'.25 E), is unlit.

Chart temporarily affected - PNG 647

985(T)/2021 PAPUA NEW GUINEA - Saibai Island - Shoaling

Former Notice - 201(T)/2021 is cancelled

HMAS *Paluma*, HMAS *Mermaid*

Latest survey indicates shoaler depths than those charted exist in an area bounded by the following positions:

9° 20'.66 S 142° 36'.94 E
9° 20'.15 S 142° 39'.81 E
9° 17'.86 S 142° 48'.32 E
9° 21'.86 S 142° 47'.07 E
9° 21'.01 S 142° 40'.60 E
9° 21'.80 S 142° 37'.67 E
9° 22'.75 S 142° 37'.04 E
9° 22'.72 S 142° 35'.37 E
9° 22'.46 S 142° 34'.10 E
9° 21'.74 S 142° 34'.60 E.

Mariners are advised to navigate with caution in the area.

Charts will be updated in due course.

Chart temporarily affected - Aus 840 - Aus 841

1067(T)/2021 PAPUA NEW GUINEA - Tavui Point - Light unlit

National Maritime Safety Authority PNG Coastal Navigation Warning 26/2021

The light, *Fl. 8s 47m 18M* (4° 08'.16 S 152° 10'.21 E), is unlit.

Chart temporarily affected - Aus 4604 (INT 604) - Aus 4622 (INT 622) - PNG 545 - PNG 554 - PNG 680

208(T)/2022 PAPUA NEW GUINEA - Unei Island - Light unlit

National Maritime Safety Authority PNG Coastal Navigation Warning 4/2022

The light, *Fl(4)16s 9m 10M* (3° 22'.69 S 143° 24'.58 E), is unlit.

Chart temporarily affected - Aus 4622 (INT 622) - PNG 389 - PNG 651

327(T)/2022 PAPUA NEW GUINEA - Bonvouloir Islands - Aulelowa (Hastings) Island - Light unlit

National Maritime Safety Authority PNG Coastal Navigation Warning 8/2022

The light, *Fl(2)6s 8m 10M* (10° 20'.48 S 151° 52'.07 E), is unlit.

Chart temporarily affected - PNG 509 - PNG 512

670(P)/2022 PAPUA NEW GUINEA - Star Reefs Passage - Shoaling

Fugro LADS

Latest survey indicates shoaler depths than those charted may exist in an area bounded by the following positions:

8° 16'.32 S 149° 35'.81 E

8° 17'.57 S 149° 34'.96 E

8° 26'.58 S 149° 42'.16 E

8° 34'.69 S 149° 54'.56 E

8° 33'.37 S 149° 55'.41 E

8° 27'.31 S 149° 50'.78 E.

Mariners are advised to navigate with caution in the area.

Charts will be updated in due course.

Chart which will be affected - PNG 519

785(T)/2022 PACIFIC OCEAN - Scientific instruments

UKHO

Grey pillar buoys exist in the following positions:

5° 02'.3 N 164° 49'.9 E

0° 00'.8 N 164° 59'.8 E

1° 59'.9 S 164° 58'.6 E

5° 01'.0 S 165° 10'.0 E

8° 02'.2 S 164° 46'.4 E.

Chart temporarily affected - Aus 4604 (INT 604)

792(T)/2022 PAPUA NEW GUINEA - Ava Point - Light unlit

National Maritime Safety Authority PNG Coastal Navigation Warning 25/2021

The light, *Fl.12s 188m 10M* (10° 34'.14 S 149° 52'.89 E), is unlit.

Chart temporarily affected - Aus 4604 (INT 604) - PNG 507

794(T)/2022 PAPUA NEW GUINEA - Huon Gulf - Fish aggregating devices

National Maritime Safety Authority PNG Coastal Navigation Warning 8/2018

23 fish aggregating devices exist in an area bounded by the following positions:

7° 00'.0 S 147° 40'.0 E

7° 55'.0 S 147° 40'.0 E

7° 55'.0 S 148° 50'.0 E

7° 00'.0 S 148° 50'.0 E.

Mariners are advised to navigate with caution.

Chart temporarily affected - Aus 4622 (INT 622) - PNG 386 - PNG 521 - PNG 522 - PNG 523

829(T)/2022 PAPUA NEW GUINEA - Dekatuwe (Bright) Island - Light beacon unlit

Former Notice - 500(T)/2022 is cancelled

National Maritime Safety Authority PNG Notice 10/2022, 14/2022

The light beacon, *Fl.2·5s 16m 10M* (10° 31'.89 S 151° 12'.74 E), is unlit.

Chart temporarily affected - PNG 509

830(T)/2022 PAPUA NEW GUINEA - Kanaweya (Shortland) Reefs to Nuakata Passage - Light beacons unlit
National Maritime Safety Authority PNG Notice 15/2022, 16/2022

The light beacons, *Fl(3)12s 11m 10M* (10° 30'.70 S 151° 08'.13 E) and *Fl(2)10s 7m 6M* (10° 23'.60 S 151° 00'.77 E), are unlit.

Chart temporarily affected - PNG 508 - PNG 509 - PNG 628

831(T)/2022 PAPUA NEW GUINEA - Wadei Island - Light beacon unlit
National Maritime Safety Authority PNG Notice 17/2022

The starboard lateral light beacon, *Fl(2)G.8s 7m 3M* (2° 39'.45 S 150° 37'.68 E), is unlit.

Chart temporarily affected - PNG 543 - PNG 666

278(T)/2023 PAPUA NEW GUINEA - Boli Point - Trobriand Islands - Light unlit
National Maritime Safety Authority PNG

The light, *Fl.G.5s* (08° 33'.77 S 151° 01'.10 E) is unlit.

Chart temporarily affected - PNG 516 - PNG 637

279(T)/2023 PAPUA NEW GUINEA - Bomatu Point - Trobriand Islands - Light unlit
National Maritime Safety Authority PNG

The light, *Fl(3)15s 31m 10M* (08° 24'.09 S 151° 07'.20 E) is unlit.

Chart temporarily affected - PNG 516 - PNG 637

280(T)/2023 PAPUA NEW GUINEA - Buka Passage - Light unlit
National Maritime Safety Authority PNG

The light, *Fl.G.6s 8·5m 7M* (05° 25'.10 S 154° 41'.10 E), is unlit.

Chart temporarily affected - PNG 684

281(T)/2023 PAPUA NEW GUINEA - Cape Nelson - Ham Reef - Light unlit
National Maritime Safety Authority PNG

The light, *Fl.10s 9·3m 10M* (09° 12'.00 S 149° 26'.75 E), is unlit.

Chart temporarily affected - PNG 519 - PNG 520

282(T)/2023 PAPUA NEW GUINEA - Galagalohi (Gallows) Reef - Goschen Strait - Light unlit
National Maritime Safety Authority PNG

The light, *Fl.5s 7m 10M* (10° 15'.44 S 151° 10'.39 E), is unlit.

Chart temporarily affected - PNG 509 - PNG 513

283(T)/2023 PAPUA NEW GUINEA - Kitava Island - Trobriand Islands - Light unlit
National Maritime Safety Authority PNG

The light, *Q* (08° 37'.70 S 151° 18'.34 E) is unlit.

Chart temporarily affected - PNG 515 - PNG 516 - PNG 637

284(T)/2023 PAPUA NEW GUINEA - Kui (Mekinley) Island - China Strait - Light unlit

National Maritime Safety Authority PNG

The light, *Q(9)15s* ($10^{\circ} 33'.21$ S $150^{\circ} 42'.39$ E), is unlit.

Chart temporarily affected - PNG 625

285(T)/2023 PAPUA NEW GUINEA - Tamiaris Reef - Laughlan Islands - Light unlit

National Maritime Safety Authority PNG

The light, *F(2)8s* ($09^{\circ} 16'.84$ S $153^{\circ} 39'.38$ E), is unlit.

Chart temporarily affected - PNG 514

EAST TIMOR

NIL

MISCELLANEOUS

677(P)/2017 SOLOMON ISLANDS - Honiara and Lungga Roads - Shoaling UKHO

Latest survey shows shoaler depths than those charted may exist in the approaches to Honiara and within Lungga Roads (9° 25'.0 S 159° 58'.8 E).

Charts will updated in due course.

Chart which will be affected - SLB 101

678(T)/2017 SOLOMON ISLANDS - Lungga Point - Light beacon unlit Australian Hydrographic Service

The light beacon, *Fl(3)20s 10m 5M* (9° 24'.26 S 160° 01'.66 E), is unlit.

Chart temporarily affected - SLB 101 - SLB 201

91(P)/2018 SOLOMON ISLANDS - Ghizo Island - Shoaling Secretariat of the Pacific Community

Latest survey shows shoaler depths than those charted may exist in and around the islands and reefs in the area between Naru Island (8° 08'.3 S 156° 55'.1 E) and Sepo Island (8° 03'.2 S 156° 49.5 E).

Mariners are advised to navigate with caution in the area.

Charts will be updated in due course.

Chart which will be affected - SLB 102 - SLB 301 - SLB 302

847(T)/2018 SOLOMON ISLANDS - Nusatupe Island - Topmark destroyed Solomon Islands Maritime Safety Administration Notice 3/2018

The topmark on light beacon, *Fl(3)R.10s 10m 5M* (8° 05'.55 S 156° 51'.81 E), has been destroyed.

Chart temporarily affected - SLB 102 - SLB 301 - SLB 302

987(T)/2018 TIMOR-LESTE - Dili - Light unlit HMAS *Paluma*

The light, *Fl.R.4s* (8° 33'.20 S 125° 34'.70 E), is unlit.

Chart temporarily affected - Aus 901

44(P)/2020 SOLOMON ISLANDS - Bina Harbour - Shoaling HMAS *Leeuwin*

Latest survey shows shoaler depths than those charted may exist in Bina Harbour (8° 56'.3 S 160° 45'.0 E).

Mariners are advised to navigate with caution in the area.

Charts will be updated in due course.

Chart which will be affected - SLB 104

406(P)/2020 SOLOMON ISLANDS - Port Noro to Kuri Point - Shoaling *Former Notice - 184(P)/2020 is cancelled* Australian Hydrographic Office , HMAS *Leeuwin*

Latest survey shows shoaler depths than those charted may exist in areas bounded by the following positions:

8° 15'.07 S 157° 11'.77 E

8° 15'.43 S 157° 11'.52 E

8° 15'.78 S 157° 11'.47 E
8° 15'.78 S 157° 12'.00 E
8° 15'.07 S 157° 11'.89 E;
and
8° 19'.68 S 157° 11'.83 E
8° 21'.27 S 157° 12'.62 E
8° 21'.09 S 157° 13'.14 E
8° 19'.05 S 157° 12'.30 E
8° 19'.17 S 157° 11'.76 E.

Mariners are advised to navigate with caution in the area.

Charts will be updated in due course.

Chart which will be affected - SLB 102

80(P)/2022 SOUTHERN OCEAN - Antarctica - Mawson - Shoaling

Australian Antarctic Division

Latest survey indicates shoaling in the approach to Mawson in the following locations

67° 25'.00 S 062° 46'.20 E
67° 29'.58 S 062° 52'.92 E
67° 30'.08 S 062° 50'.45 E
67° 30'.70 S 062° 53'.35 E
67° 30'.45 S 062° 51'.56 E
67° 35'.00 S 062° 52'.25 E

Mariners are advised to navigate with caution in the area.

Charts will be updated in due course.

Chart which will be affected - Aus 600 (INT 9036)

361(P)/2022 TIMOR-LESTE - Dili - Shoaling

HMAS *Leeuwin*

Latest survey indicates shoaler depths than those charted may exist in an area bounded by the coast and the following positions:

8° 33'.82 S 125° 23'.74 E
8° 32'.93 S 125° 23'.67 E
8° 31'.38 S 125° 31'.30 E
8° 32'.69 S 125° 31'.18 E.

Mariners are advised to navigate with caution in the area.

Charts will be updated in due course.

Chart which will be affected - Aus 312 - Aus 313 - Aus 321

805(T)/2022 SOLOMON ISLANDS - Indispensable Strait - Alite Reef - Light beacon unlit

Solomon Islands Maritime Safety Administration

The light beacon, *Q.10m 4M* (8° 51'.78 S 160° 36'.26 E), is unlit.

Chart temporarily affected - SLB 304

807(T)/2022 SOLOMON ISLANDS - Nggela Channel - Indalilau Island - Light beacon unlit

Solomon Islands Maritime Safety Administration

The light beacon, *Fl(2)10s 8m 10M* (9° 11'.60 S 160° 21'.65 E), is unlit.

Chart temporarily affected - Aus 4604 (INT 604) - SLB 201 - SLB 304

252(T)/2023 SOLOMON ISLANDS - New Georgia Island - Munda Point - Light beacons unlit

Solomon Islands Maritime Authority Notice 2/2023

Light beacons, *Fl(3)5M* (8° 20'.19 S 157° 13'.76 E) and *Fl.10s 10m 10M* (8° 23'.02 S 157° 13'.59 E), are unlit.

Chart temporarily affected - Aus 4622 (INT 622) - SLB 302