

TEMPORARY AND PRELIMINARY NOTICES
In force on 13 October 2023

NEW SOUTH WALES

709(T)/2016 AUSTRALIA - NEW SOUTH WALES - Cape Byron - Obstructions eastwards
HMAS *Gascoyne*

Obstructions exist in positions 28° 36'.20 S 153° 44'.30 E and 28° 36'.95 S 153° 44'.02 E.

Chart temporarily affected - Aus 813

549(T)/2020 AUSTRALIA - NEW SOUTH WALES - Port Kembla - Exclusion zone
Port Authority of New South Wales

A 50m exclusion zone exists around the northern end of berth 206 (34° 28'.26 S 150° 54'.67 E).

Mariners are not to enter the area without obtaining permission from the Harbour Master or VTIC.

Chart temporarily affected - Aus 195

604(T)/2020 AUSTRALIA - NEW SOUTH WALES - Jervis Bay - Hyams Beach - Light buoy
Australian Maritime Warfare Centre

A special light buoy, *Fl.Y.5s*, exists in position 35° 06'.23 S 150° 42'.85 E.

Chart temporarily affected - Aus 807 - Aus 808

997(T)/2020 AUSTRALIA - NEW SOUTH WALES - Merimbula Bay to Broulee Island - Scientific instruments
Transport for NSW

Special light buoys, *Fl(5)Y.20s*, exist in the following positions:

35° 50'.9 S 150° 11'.3 E

35° 52'.8 S 150° 09'.7 E

36° 54'.5 S 149° 55'.0 E.

Chart temporarily affected - Aus 806 - Aus 807

105(T)/2021 AUSTRALIA - NEW SOUTH WALES - Port Jackson - Berrys Bay - Jetties ruined
Transport for NSW , NSW Roads and Maritime Services

Jetties and piers are ruined, and partially submerged obstructions may exist in an area bounded by the coast and the following positions:

33° 50'.70 S 151° 11'.69 E

33° 50'.70 S 151° 11'.76 E

33° 50'.67 S 151° 11'.85 E

33° 50'.63 S 151° 11'.84 E.

A west cardinal light beacon, *Q(9)15s*, exists in position 33° 50'.59 S 151° 11'.50 E.

Mariners are advised to navigate with caution in the area.

Chart temporarily affected - Aus 200

594(T)/2021 AUSTRALIA - NEW SOUTH WALES - Port Kembla - Harbour works
Port Authority of New South Wales Notice 02/2021, 03/2021

Works associated with the construction of the LNG import facility are in progress at berth 101 (34° 27'.53 S 150° 53'.85 E).

A silt curtain, marked by special light buoys, has been established around the works in the following positions:

<i>Position</i>	<i>Remarks</i>
34° 27'.47 S 150° 53'.84 E	
34° 27'.48 S 150° 53'.83 E	special light buoy, Q.Y
34° 27'.49 S 150° 53'.81 E	
34° 27'.50 S 150° 53'.81 E	special light buoy, Q.Y

34° 27'.53 S 150° 53'.82 E special light buoy, Q. Y
34° 27'.56 S 150° 53'.82 E special light buoy, Q. Y
34° 27'.57 S 150° 53'.82 E
34° 27'.60 S 150° 53'.83 E special light buoy, Q. Y
34° 27'.61 S 150° 53'.87 E special light buoy, Q. Y
34° 27'.62 S 150° 53'.89 E.

Mariners are advised to navigate with caution in the area.

Chart temporarily affected - Aus 195

880(T)/2021 AUSTRALIA - NEW SOUTH WALES - Cape Byron - Light buoy off station northwards

Byron Bay Deep Sea Fishing Club

The special light buoy, *Fl. Y. 5s* (28° 35'.40 S 153° 38'.11 E), is off station.

Chart temporarily affected - Aus 813

61(T)/2022 AUSTRALIA - NEW SOUTH WALES - Port Jackson - Chowder Bay - Scientific instruments

Former Notice - 524(T)/2021 is cancelled

Department of Defence

Subsurface scientific instruments, 2m above seabed, exist in the following positions:

33° 50.42' S 151° 15.42' E
33° 50.39' S 151° 15.39' E
33° 50.38' S 151° 15.43' E.

The area will be marked by buoys.

Mariners are advised to navigate with caution in the area.

Chart temporarily affected - Aus 200

203(T)/2022 AUSTRALIA - NEW SOUTH WALES - Twofold Bay - Eden - Snug Cove - Harbour works; exclusion zone

Port Authority of New South Wales Notice 122/2022

Works associated with the construction of a wave attenuator are in progress. An exclusion zone marked by special light buoys, *Fl. Y. 3s*, exists in an area bounded by the following positions:

37° 04'.37 S 149° 54'.41 E
37° 04'.37 S 149° 54'.39 E
37° 04'.37 S 149° 54'.36 E
37° 04'.39 S 149° 54'.32 E
37° 04'.41 S 149° 54'.27 E
37° 04'.43 S 149° 54'.22 E
37° 04'.45 S 149° 54'.18 E
37° 04'.43 S 149° 54'.15 E
37° 04'.40 S 149° 54'.12 E
37° 04'.37 S 149° 54'.09 E
37° 04'.33 S 149° 54'.16 E
37° 04'.29 S 149° 54'.22 E
37° 04'.33 S 149° 54'.27 E
37° 04'.31 S 149° 54'.33 E
37° 04'.31 S 149° 54'.38 E
37° 04'.35 S 149° 54'.42 E.

Mariners are advised to navigate with caution in the area.

Chart temporarily affected - Aus 192

228(T)/2022 AUSTRALIA - NEW SOUTH WALES - Botany Bay - Port Botany - Light beacon destroyed

Port Authority of New South Wales Notice 14/2022

The east cardinal light beacon, *Q(3)10s* (33° 58'.37 S 151° 11'.76 E), has been destroyed; a light buoy, *Q*, exists in situ.

Chart temporarily affected - Aus 198

727(T)/2022 AUSTRALIA - NEW SOUTH WALES - Tathra to Seal Rocks - Obstructions
Transport for NSW Notice SY2028

Shipping containers and debris may exist along the coast and in offshore waters between Tathra (36° 43'.55 S 149° 59'.46 E) and Seal Rocks (32° 27'.86 S 152° 33'.22 E).

Mariners are advised to navigate with caution in the area.

Chart temporarily affected - Aus 489 - Aus 806 - Aus 807 - Aus 808 - Aus 809 - Aus 810 - Aus 4601 (INT 601) - Aus 4602 (INT 602)

133(T)/2023 AUSTRALIA - NEW SOUTH WALES - Crabbes Creek Beach - Wreck eastwards
Australian Maritime Safety Authority

A wreck exists in position 28° 29'.43 S 153° 38'.52 E.

Chart temporarily affected - Aus 813

193(T)/2023 AUSTRALIA - NEW SOUTH WALES - Ulladulla - Wreck northeastwards
Transport for NSW

A wreck exists in position 35° 19'.08 S 150° 35'.44 E.

Chart temporarily affected - Aus 807

608(T)/2023 AUSTRALIA - NEW SOUTH WALES - Botany Bay - Kurnell to La Perouse - Harbour works
Port Authority of New South Wales Notice 16/2023

Works associated with the construction of the Kamay Ferry Wharves are in progress in the vicinity of positions 33° 59'.21 S 151° 13'.68 E and 34° 00'.14 S 151° 13'.01 E.

An exclusion zone exists in the works area and will be marked by special buoys.

Anchoring is prohibited in the vicinity of position 34° 00'.28 S 151° 12'.83 E.

Mariners are advised to navigate with caution in the area.

Chart temporarily affected - Aus 198

659(T)/2023 AUSTRALIA - NEW SOUTH WALES - Forster - Artificial reef
Department of Primary Industries

Works to establish an artificial reef are in progress in the vicinity of position 32° 10'.06 S 152° 33'.27 E.

An exclusion zone exists around the works.

Mariners are advised to navigate with caution in the area.

Chart temporarily affected - Aus 810

701(T)/2023 AUSTRALIA - NEW SOUTH WALES - Cape Banks to Cabbage Tree Bay - Scientific instruments eastwards
Sydney Institute of Marine Science

Subsurface scientific instruments exist as follows:

<i>Position</i>	<i>Metres below surface</i>
33° 47'.92 S 151° 17'.71 E	9
33° 48'.05 S 151° 18'.33 E	24
33° 49'.59 S 151° 17'.89 E	28
33° 49'.85 S 151° 17'.64 E	28
33° 50'.05 S 151° 17'.48 E	27
33° 50'.25 S 151° 17'.30 E	26.5
33° 53'.74 S 151° 17'.30 E	27
33° 53'.91 S 151° 17'.75 E	41
33° 54'.17 S 151° 18'.16 E	58
33° 54'.43 S 151° 18'.59 E	63

33° 54'.69 S 151° 19'.05 E	64
33° 54'.96 S 151° 19'.51 E	64
33° 55'.21 S 151° 19'.93 E	71
33° 55'.46 S 151° 20'.36 E	70
33° 55'.72 S 151° 20'.79 E	80
33° 55'.98 S 151° 21'.24 E	80
33° 56'.25 S 151° 21'.71 E	82
33° 56'.49 S 151° 22'.16 E	87
33° 56'.75 S 151° 22'.59 E	90
33° 57'.06 S 151° 23'.02 E	98
33° 57'.32 S 151° 23'.47 E	119.

Chart temporarily affected - Aus 200 - Aus 489 - Aus 809

750(T)/2023 AUSTRALIA - NEW SOUTH WALES - Port Stephens - Scientific instruments

Manly Hydraulics Laboratory

Special light buoys, *Fl. Y. 3s*, exist in positions 32° 41'.53 S 152° 01'.92 E and 32° 41'.78 S 152° 05'.10 E.

Chart temporarily affected - Aus 209

808(T)/2023 AUSTRALIA - NEW SOUTH WALES - Clarence River - Scientific instrument

NSW Department of Planning and Environment

A special light buoy, *Fl. Y. 5s*, exists in position 29° 25'.31 S 153° 21'.32 E.

Chart temporarily affected - Aus 222

855(T)/2023 AUSTRALIA - NEW SOUTH WALES - Port Jackson - Balls Head - Drilling operations

Port Authority of New South Wales Notice 19/2023

Barge *Sealift 3* will be conducting drilling operations in an area bounded by the following positions:

33° 50'.66 S 151° 11'.36 E
33° 50'.78 S 151° 11'.58 E
33° 50'.66 S 151° 11'.58 E
33° 50'.57 S 151° 11'.39 E.

A 10m exclusion zone, marked by special light buoys, exists around the barge.

Mariners are advised to navigate with caution in the area.

Chart temporarily affected - Aus 200

888(T)/2023 AUSTRALIA - NEW SOUTH WALES - Broken Bay - Military exercise eastwards

Department of Defence

During the period 24 October to 2 November 2023, a military exercise involving the use of ROVs and live firing will be conducted in an area bounded by the following positions:

33° 45'.0 S 151° 19'.0 E
33° 54'.0 S 151° 52'.0 E
33° 33'.0 S 152° 07'.0 E
33° 32'.0 S 151° 19'.0 E.

Mariners are requested to keep a clearance of 0.25M from vessels operating the ROVs and 1M from vessels conducting the live firing.

Mariners are advised to navigate with caution in the area.

Chart temporarily affected - Aus 200 - Aus 204 - Aus 808 - Aus 809

QUEENSLAND

461(T)/2017 AUSTRALIA - QUEENSLAND - Bowen - Obstruction

Maritime Safety Queensland

An obstruction marked by a special light buoy, *Fl.Y.2-5s*, exists in position 20° 01'.40 S 148° 15'.26 E.

Chart temporarily affected - Aus 268

470(T)/2017 AUSTRALIA - QUEENSLAND - North Gardner Bank - Foul ground

Maritime Safety Queensland Notice 24/2017

A foul ground exists in position 24° 56'.30 S 153° 26.90 E.

Chart temporarily affected - Aus 816

523(P)/2017 AUSTRALIA - QUEENSLAND - Great Barrier Reef - Joist Reef to Hydrographers Passage - Shoaling

LADS Flight

Latest survey shows shoaler depths than those charted may exist in an area bounded by the following positions:

19° 27'.1 S 149° 38'.9 E

20° 12'.2 S 149° 39'.1 E

20° 12'.2 S 150° 18'.5 E

19° 39'.2 S 150° 18'.5 E

Charts will updated in due course.

Chart which will be affected - Aus 821 - Aus 824 - Aus 825

989(P)/2017 AUSTRALIA - CORAL SEA - Portlock Reefs - Reefs

LADS Flight

Latest survey shows uncharted reefs exist in area bounded by the following positions:

9° 33'.30 S 144° 46'.00 E

9° 33'.90 S 144° 42'.50 E

9° 36'.60 S 144° 42'.70 E

9° 37'.70 S 144° 45'.50 E.

Mariners are advised to navigate with caution in the area.

Charts will be updated in due course.

Chart which will be affected - Aus 377

27(T)/2018 AUSTRALIA - QUEENSLAND - Brisbane - Redcliffe Jetty - Harbour works

Maritime Safety Queensland

Harbour works are in progress at the head of Redcliffe Jetty (27° 13'.567 S 153° 07'.047 E)

All vessels will display appropriate lights and symbols.

Mariners are advised to navigate with caution

Chart temporarily affected - Aus 236

72(T)/2018 AUSTRALIA - QUEENSLAND - Fitzroy Island - Bird Rock - Light buoys

Former Notice - 29(T)/2018 is cancelled

Maritime Safety Queensland Notice 503(T)/2017

Two special light buoys, *Fl.Y.2-5s* exist in position 16° 55'.43 S 145° 59'.43 E.

Chart temporarily affected - Aus 830

213(T)/2018 AUSTRALIA - QUEENSLAND - Bribie Island - South Point - Shoaling
Maritime Safety Queensland

Shoaling exists at the southern end of Bribie Island, with a least depth of *0.5m* in position 27° 06'.18 S 153° 11'.24 E.

Mariners are advised to navigate with caution in the area.

Chart temporarily affected - Aus 236

215(T)/2018 AUSTRALIA - QUEENSLAND - Hinchinbrook Channel - Oyster Point - Wreck
Maritime Safety Queensland

A stranded wreck marked by a special light buoy, *Fl.Y.3s*, exists in position 18° 16'.10 S 146° 03'.06 E.

Chart temporarily affected - Aus 259

782(P)/2018 AUSTRALIA - QUEENSLAND - Flinders Reef - Shoaling
Maritime Safety Queensland

Latest survey shows shoaler depths than those charted may exist in areas bounded by the following positions:

17° 41'.74 S 148° 35'.82 E
17° 37'.88 S 148° 36'.44 E
17° 32'.09 S 148° 34'.36 E
17° 22'.81 S 148° 25'.78 E
17° 30'.72 S 148° 16'.29 E
17° 43'.51 S 148° 20'.39 E
17° 44'.26 S 148° 27'.71 E.

and:

17° 49'.85 S 148° 23'.54 E
17° 53'.82 S 148° 29'.12 E
17° 53'.16 S 148° 32'.28 E
17° 50'.79 S 148° 33'.13 E
17° 47'.63 S 148° 29'.64 E
17° 45'.93 S 148° 25'.72 E
17° 46'.73 S 148° 23'.97 E.

Mariners are advised to navigate with extreme caution in the area.

Charts will be updated in due course.

Chart which will be affected - Aus 615

488(T)/2019 AUSTRALIA - QUEENSLAND - Karumba - Wreck northwards
Maritime Safety Queensland Notice 188(T)/2019

A stranded wreck marked by a special light buoy, *Fl.Y.2.5s*, exists in position 17° 15'.36 S 140° 53'.89 E.

Chart temporarily affected - Aus 303

494(P)/2019 AUSTRALIA - CORAL SEA - Kenn Reefs and Frederick Reefs - Shoaling
LADS

Latest surveys indicate shoaler depths than those currently charted exist in an area bounded by the following positions:

21° 16'.05 S 155° 42'.52 E
21° 16'.64 S 155° 44'.44 E
21° 13'.83 S 155° 46'.76 E
21° 11'.42 S 155° 45'.73 E.

and

21° 01'.09 S 154° 21'.18 E
21° 01'.32 S 154° 23'.02 E
20° 59'.87 S 154° 24'.06 E
20° 55'.25 S 154° 23'.85 E
20° 54'.42 S 154° 23'.35 E
20° 58'.22 S 154° 20'.72 E.

Charts will be updated in due course. Mariners are advised to navigate with caution.

Chart which will be affected - Aus 611 - Aus 612

548(P)/2019 AUSTRALIA - QUEENSLAND - Hydrographers Passage - Shoaling
LADS Flight

Latest survey shows shoaler depths than those charted may exist in an area bounded by the following positions:

20° 36'.52 S 150° 04'.39 E
20° 30'.63 S 150° 17'.03 E
20° 23'.93 S 150° 16'.63 E
20° 06'.15 S 150° 04'.79 E
20° 11'.27 S 150° 00'.18 E
20° 21'.88 S 150° 04'.70 E
20° 27'.57 S 150° 09'.82 E
20° 32'.65 S 150° 01'.91 E.

Mariners are advised to navigate with caution in the area.

Charts will be updated in due course.

Chart which will be affected - Aus 821 - Aus 824

603(T)/2019 AUSTRALIA - QUEENSLAND - Weipa - Albatross Bay - Scientific instruments
Maritime Safety Queensland Notice 242(T)/2019

Special light buoys, *Fl. Y. 6s*, exist in the following positions:

12° 40'.10 S 141° 50'.77 E
12° 42'.09 S 141° 52'.00 E
12° 40'.42 S 141° 46'.62 E.

Chart temporarily affected - Aus 4

951(T)/2019 AUSTRALIA - QUEENSLAND - Abbot Point - Light beacon unlit; light buoy established
Former Notice - 369(T)/2017 is cancelled
Maritime Safety Queensland

The east cardinal light beacon, *Q(3)10s* (19° 51'.12 S 148° 03'.89 E), is unlit.

A special conical light buoy, *Fl. Y. 1·5s*, exists in position 19° 51'.05 S 148° 03'.95 E.

Chart temporarily affected - Aus 255 - Aus 826

105(T)/2020 AUSTRALIA - QUEENSLAND - Cape Bowling Green - Obstruction; light buoy
Maritime Safety Queensland Notice 19(T)/2020

An obstruction marked by a special light buoy, *Fl. Y. 2·5s*, exists in position 19° 18'.26 S 147° 22'.96 E.

Chart temporarily affected - Aus 827

286(T)/2020 AUSTRALIA - QUEENSLAND - Laguna Quays - Shoaling; nav aids
Former Notice - 917(T)/2017 is cancelled
Maritime Safety Queensland Notice 103(T)/2020

Shoaling exists within the entrance channel and waterways around the Laguna Quays Marina (20° 36'.0 S 148° 41'.0 E).

Nav aids marking the entrance channel and in the marina may not be operational.

Mariners are advised to navigate with caution in the area.

Chart temporarily affected - Aus 252

429(T)/2020 AUSTRALIA - QUEENSLAND - Mackay - Obstruction; light buoy
Maritime Safety Queensland Notice 183/2020

An obstruction marked by a special light buoy exists in position 21° 06'.43 S 149° 13'.52 E.

Chart temporarily affected - Aus 250

457(T)/2020 AUSTRALIA - QUEENSLAND - Cape Bowling Green - Obstruction southeastwards

Maritime Safety Queensland Notice 190(T)/2020

An obstruction, with least depth *15m*, exists in position 19° 20'.27 S 147° 35'.97 E.

Mariners are advised to navigate with caution in the area.

Chart temporarily affected - Aus 826 - Aus 827

555(T)/2020 AUSTRALIA - QUEENSLAND - Gold Coast - Scientific instrument

Maritime Safety Queensland Notice 84(T)/2020

A special light buoy, *Fl(5)Y.20s*, exists in position 27° 58'.18 S 153° 26'.50 E.

Chart temporarily affected - Aus 814

1008(T)/2020 AUSTRALIA - QUEENSLAND - Townsville - Wreck

Maritime Safety Queensland Notice 427(T)/2020

A wreck marked by a special light buoy, *Q.Y*, exists in position 19° 14'.91 S 146° 49'.57 E.

Mariners are advised to navigate with caution in the area.

Chart temporarily affected - Aus 256

1049(P)/2020 AUSTRALIA - TORRES STRAIT - Deliverance Island - Shoaling

HMAS *Albany*

Latest survey shows shoaling exists as follows:

<i>Depth</i>	<i>Position</i>
<i>1.1m</i>	9° 32'.89 S 141° 27'.03 E
<i>3.6m</i>	9° 32'.22 S 141° 27'.73 E.

Mariners are advised to navigate with caution in the area.

Charts will be updated in due course.

Chart which will be affected - Aus 842

21(T)/2021 AUSTRALIA - CORAL SEA - Middleton Reef - Unexploded ordnance

Parks Australia

An exclusion zone exists in an area bounded by the following positions:

29° 27'.12 S 159° 02'.92 E
29° 26'.58 S 159° 02'.92 E
29° 26'.58 S 159° 03'.55 E
29° 27'.12 S 159° 03'.55 E.

Unexploded ordnance may exist in the area and mariners are advised to navigate with caution.

Chart temporarily affected - Aus 618

64(T)/2021 AUSTRALIA - QUEENSLAND - Gladstone - Auckland Point Wharves - Harbour works

Maritime Safety Queensland 360(T)/2019

Construction of a mooring dolphin is in progress off the eastern end of berth No 4 (23° 50'.02 S 151° 15'.91 E) by vessel *AMS Shine* and the barge *M1201* and support vessels.

Vessels and hazards will display appropriate lights and shapes.

Vessels will monitor VHF Ch 13.

Mariners are advised to navigate with caution in the area.

Chart temporarily affected - Aus 245

247(T)/2021 AUSTRALIA - QUEENSLAND - Cape Ferguson - Scientific instrument
Australian Institute of Marine Science

A special spar light buoy, Q(4)Y.18s, exists in position 19° 16'.52 S 147° 03'.84 E.

Chart temporarily affected - Aus 256

249(P)/2021 AUSTRALIA - QUEENSLAND - Holt Island to Hexham Island - Shoaling
LADS Flight

Latest survey shows shoaler depths than those charted may exist in areas bounded by the following positions:

22° 11'.75 S 150° 22'.51 E
22° 11'.90 S 150° 22'.99 E
22° 13'.77 S 150° 22'.25 E
22° 13'.51 S 150° 21'.60 E;
and
22° 00'.22 S 150° 23'.51 E
22° 01'.04 S 150° 23'.61 E
22° 02'.68 S 150° 18'.70 E
22° 01'.44 S 150° 16'.29 E
22° 00'.19 S 150° 21'.01 E.

Mariners are advised to navigate with caution in the area.

Charts will be updated in due course.

Chart which will be affected - Aus 260 - Aus 367 - Aus 822

332(T)/2021 AUSTRALIA - QUEENSLAND - Poll Islet - Wreck
Maritime Safety Queensland , Australian Border Force

A stranded wreck exists in position 10° 15'.17 S 142° 49'.58 E.

Chart temporarily affected - Aus 839 - Aus 841

337(P)/2021 AUSTRALIA - TORRES STRAIT - Boigu Island - Shoaling
HMAS *Leeuwin*

Latest survey shows shoaler depths than those charted may exist in areas bounded by the following positions:

9° 14'.38 S 142° 15'.82 E
9° 15'.78 S 142° 19'.88 E
9° 15'.49 S 142° 20'.00 E
9° 13'.58 S 142° 16'.26 E;
and
9° 12'.49 S 142° 15'.50 E
9° 12'.33 S 142° 13'.73 E
9° 13'.16 S 142° 13'.24 E
9° 13'.20 S 142° 15'.21 E.

Mariners are advised to navigate with caution in the area.

Charts will be updated in due course.

Chart which will be affected - Aus 841

738(T)/2021 AUSTRALIA - QUEENSLAND - Fitzroy River - Middle Channel - Scientific instrument
Maritime Safety Queensland Notice 31/2021

A special light buoy, Q.Y, exists in position 23° 28'.23 S 150° 56'.37 E.

Chart temporarily affected - Aus 265

741(T)/2021 AUSTRALIA - QUEENSLAND - Fraser Island - Elbow Point - Shoaling

Navionics

Depths of less than 1m have been reported in an area bounded by the following positions:

25° 44'.40 S 152° 59'.29 E
25° 44'.71 S 152° 59'.37 E
25° 44'.89 S 153° 00'.30 E
25° 44'.66 S 153° 00'.38 E
25° 44'.40 S 152° 59'.77 E.

Mariners are advised to navigate with caution in the area.

Charts will be updated in due course.

Chart temporarily affected - Aus 817

795(T)/2021 AUSTRALIA - TORRES STRAIT - Yorke Islands to Boigu Island - Scientific instruments

Maritime Safety Queensland Notice 330(T)/2021

Special light buoys, *Fl(5)Y.20s*, exist in the following positions:

9° 13'.27 S 142° 13'.24 E
9° 44'.85 S 143° 24'.09 E.

Chart temporarily affected - Aus 377 - Aus 840 - Aus 841

842(T)/2021 AUSTRALIA - QUEENSLAND - Great Sandy Strait - Light buoys

Former Notice - 754(T)/2021 is cancelled

Maritime Safety Queensland Notice 61(T)/2016, 146/2017, 145(T)/2021; 70/2020

Light buoys exist as follows:

<i>Number</i>	<i>Position</i>	<i>Characteristics</i>
S3	25° 12'.70 S 152° 54'.75 E	<i>Fl.G.2.5s</i>
NG1	25° 20'.20 S 153° 01'.40 E	<i>Fl.G.2.5s.</i>

Chart temporarily affected - Aus 817

980(T)/2021 AUSTRALIA - QUEENSLAND - Fitzroy River - South Channel - Scientific instrument

Former Notice - 661(T)/2016 is cancelled

Maritime Safety Queensland Notice 400(T)/2021

A special light buoy, *Fl.Y.4s*, exists in position 23° 30'.23 S 150° 45'.83 E.

Chart temporarily affected - Aus 819

981(T)/2021 AUSTRALIA - QUEENSLAND - Hay Point - Exclusion zone

Maritime Safety Queensland Notice 398(T)/2021

An exclusion zone exists in an area bounded by the coast and the following positions:

21° 16'.40 S 149° 17'.85 E
21° 15'.96 S 149° 18'.67 E
21° 16'.25 S 149° 18'.86 E
21° 16'.16 S 149° 19'.02 E
21° 15'.91 S 149° 18'.86 E
21° 15'.69 S 149° 18'.83 E
21° 15'.34 S 149° 18'.61 E
21° 15'.59 S 149° 18'.14 E
21° 15'.83 S 149° 18'.29 E
21° 16'.25 S 149° 17'.51 E.

Only authorised vessels are permitted to enter.

Mariners are advised to navigate with caution in the area.

Chart temporarily affected - Aus 249 - Aus 250 - Aus 823

1025(T)/2021 AUSTRALIA - TORRES STRAIT - Great North East Channel - Coconut Island - Scientific instrument

Former Notice - 486(T)/2021 is cancelled
Maritime Safety Queensland Notice 427(T)/2021

A special light buoy, *Fl(5)Y.20s*, exists in position 10° 03'.18 S 143° 03'.12 E.

Chart temporarily affected - Aus 839

25(T)/2022 AUSTRALIA - QUEENSLAND - Magnetic Island - Cockle Bay - Scientific instrument
Maritime Safety Queensland Notice 456(T)/2021

A scientific instrument marked by a special light beacon, *Fl.Y.2-5s*, exists in position 19° 10'.15 S 146° 48'.55 E.

Chart temporarily affected - Aus 256 - Aus 827

26(T)/2022 AUSTRALIA - QUEENSLAND - Townsville - Obstruction; light buoy
Maritime Safety Queensland Notice 461(T)/2021

An obstruction marked by a special light buoy, *Fl.Y.2-5s*, exists in position 19° 14'.66 S 146° 49'.89 E.

Chart temporarily affected - Aus 256

27(P)/2022 AUSTRALIA - TORRES STRAIT - Boigu Island - Shoaling
Australian Institute of Marine Science

The drying area (9° 15'.51 S 142° 06'.09 E) extends 0.27M northwest to position 9° 15'.31 S 142° 05'.91 E.

The reef (9° 11'.96 S 142° 10'.56 E) extends 0.27M south to position 9° 12'.23 S 142° 10'.56 E.

Mariners are advised to navigate with caution in the area.

Charts will be updated in due course.

Chart which will be affected - Aus 841

62(T)/2022 AUSTRALIA - QUEENSLAND - Abbot Bay - Light buoys
Maritime Safety Queensland Notice 01(T)/2022

Light buoys exist as follows:

<i>Position</i>	<i>Characteristics</i>
19° 50'.60 S 148° 01'.00 E	<i>Fl.Y.4s</i>
19° 50'.50 S 148° 01'.25 E	<i>Fl.Y.4s.</i>

Chart temporarily affected - Aus 255 - Aus 826

236(T)/2022 AUSTRALIA - QUEENSLAND - Bundaberg - Burnett River - Light buoy off station
Maritime Safety Queensland Notice 109(T)/2022

The starboard lateral light buoy, *Fl.G.4s BR5* (24° 48'.78 S 152° 21'.77 E), is off station.

Chart temporarily affected - Aus 242

238(T)/2022 AUSTRALIA - QUEENSLAND - Hay Point - Light buoys
Maritime Safety Queensland Notice 118(T)/2022

Special light buoys, *Fl.Y.3s*, exist in positions 21° 17'.46 S 149° 17'.88 E and 21° 17'.54 S 149° 17'.95 E.

Chart temporarily affected - Aus 250

277(T)/2022 AUSTRALIA - QUEENSLAND - Cairns - Trinity Inlet - Wreck
Maritime Safety Queensland Notice 156/2022

A wreck marked by a light, *Fl.Y.3s*, exists in position 16° 56'.70 S 145° 46'.98 E.

Mariners are advised to navigate with caution in the area.

Chart temporarily affected - Aus 262

388(P)/2022 AUSTRALIA - QUEENSLAND - Bundaberg - Burnett River - Shoaling

Australian Hydrographic Office

Latest survey indicates shoaler depths than those charted may exist in the Burnett River between Long Reach and Millaquin Reach.

The most significant shoals are as follows:

<i>Position</i>	<i>Depth</i>
24° 49'.11 S 152° 22'.08 E	-0.1m
24° 49'.94 S 152° 22'.31 E	0.8m.

Mariners are advised to navigate with caution in the area.

Charts will be updated in due course.

Chart which will be affected - Aus 242

422(T)/2022 AUSTRALIA - QUEENSLAND - Palm Beach - Light buoy off station

Maritime Safety Queensland Notice 220(T)/2022

The special light buoy, *Fl. Y. 5s* (28° 06'.34 S 153° 28'.42 E), is off station.

Chart temporarily affected - Aus 814

452(T)/2022 AUSTRALIA - QUEENSLAND - North Stradbroke Island - Wreck

Maritime Safety Queensland Notice 250/2022

A wreck exists in the vicinity of position 27° 29'.45 S 153° 46'.02 E.

Mariners are advised to navigate with caution in the area.

Chart temporarily affected - Aus 814

490(T)/2022 AUSTRALIA - QUEENSLAND - Gold Coast Seaway - Light buoy destroyed eastwards

Maritime Safety Queensland Notice 266/2022

The special light buoy, *Fl. Y. 4s* (27° 54'.93 S 153° 27'.59 E), has been destroyed and has sunk in position.

Mariners are advised to navigate with caution in the area.

Chart temporarily affected - Aus 814

536(T)/2022 AUSTRALIA - QUEENSLAND - Yorkeys Knob - Lights altered

Maritime Safety Queensland Notice 287(T)/2022

The rear leading light, *Iso. Bu. 2s* (16° 48'.09 S 145° 42'.93 E) has been temporarily altered to *Iso. 2s*.

The front leading light, *Q. Bu* (16° 48'.04 S 145° 42'.97 E) has been temporarily altered to *Q*.

Chart temporarily affected - Aus 262 - Aus 830

700(T)/2022 AUSTRALIA - QUEENSLAND - Townsville - Shoaling; light buoys

Former Notice - 535(T)/2022 is cancelled

Maritime Safety Queensland Notice 376(T)/2022

Mariners are advised to pass north east of the following:

<i>Position</i>	<i>Remarks</i>
19° 14'.66 S 146° 49'.97 E	
19° 14'.61 S 146° 50'.01 E	special light buoy, <i>Fl. Y. 2-5s WSM2</i>
19° 14'.55 S 146° 50'.02 E	special light buoy, <i>Fl. Y. 2-5s WSM1</i>
19° 14'.49 S 146° 50'.00 E	light beacon, <i>Q. G P15</i> .

Mariners should navigate with caution in the area.

Chart temporarily affected - Aus 256

701(T)/2022 AUSTRALIA - QUEENSLAND - Townsville - Channel widening works; nav aids

Former Notice - 359(T)/2022 is cancelled

Maritime Safety Queensland Notice 122(T)/2021, 125(T)/2021, 368(T)/2022, 379/2022, 380/2022

Barge *PMG181* and support vessels are conducting works to widen the channel as part of the Townsville Port Expansion Project.

During the works, beacons may be removed and replaced by virtual AIS while new beacons are installed.

Mariners are advised to navigate with caution in the area.

Chart temporarily affected - Aus 256

733(T)/2022 AUSTRALIA - QUEENSLAND - Cairns - Trinity Inlet - Light buoys

Maritime Safety Queensland Notice 403(T)/2022

Special light buoys, *Fl.Y.4s*, exist in the following positions:

16° 54'.81 S 145° 47'.20 E

16° 54'.89 S 145° 47'.18 E

16° 55'.17 S 145° 47'.13 E.

Chart temporarily affected - Aus 262

736(T)/2022 AUSTRALIA - QUEENSLAND - Moreton Bay - Scarborough - Mooring buoy

Maritime Safety Queensland Notice 419(T)/2022

An unlit blue mooring buoy exists in position 27° 11'.00 S 153° 05'.90 E.

Chart temporarily affected - Aus 236

788(P)/2022 AUSTRALIA - CORAL SEA - Diamond Islets - Shoaling

LADS Flight

Shoaler depths than those charted exist in the vicinity of the Diamond Islets.

Charts will updated in due course.

Chart which will be affected - Aus 614

875(T)/2022 AUSTRALIA - QUEENSLAND - Brisbane River - Entrance Channel to Hamilton Reach - Obstructions

Maritime Safety Queensland

Due to a severe weather event, submerged obstructions and unusual currents may exist in the Brisbane River from the Entrance Channel (27° 18'.62 S 153° 12'.55 E) to South Brisbane Reach (27° 28'.29 S 153° 01'.22 E).

Mariners are advised to navigate with caution in the area.

Chart temporarily affected - Aus 237

877(T)/2022 AUSTRALIA - QUEENSLAND - Brisbane River - Hamilton Reach - Wreck

Maritime Safety Queensland Notice 172(T)/2022

A wreck marked by a special light buoy, *Fl.Y.2-5s*, exists in position 27° 26'.43 S 153° 03'.28 E.

Mariners are advised to navigate with caution in the area.

Chart temporarily affected - Aus 237

891(T)/2022 AUSTRALIA - QUEENSLAND - Moreton Bay - Spitfire Channel - Obstruction

Maritime Safety Queensland Notice 257(T)/2021

An obstruction exists on the seabed in position 27° 03'.63 S 153° 17'.32 E.

Mariners are advised to navigate with caution in the area.

Chart temporarily affected - Aus 236 - Aus 814 - Aus 815

893(T)/2022 AUSTRALIA - QUEENSLAND - Moreton Bay - Spitfire Channel - Light beacon unreliable

Maritime Safety Queensland Notice 103(T)/2021

The light beacon, *Fl.Y.1-5s S1* (27° 02'.88 S 153° 15'.99 E), is unreliable.

Chart temporarily affected - Aus 236

895(T)/2022 AUSTRALIA - QUEENSLAND - Pumicestone Channel - Wreck, light buoy

Maritime Safety Queensland Notice 466(T)/2020

A wreck marked by a special conical light buoy, *Fl.Y.2-5s*, exists in position 26° 48'.39 S 153° 07'.51 E.

Chart temporarily affected - Aus 236

946(T)/2022 AUSTRALIA - QUEENSLAND - Moreton Bay - Redcliffe - Light buoy unlit

Maritime Safety Queensland Notice 494(T)/2022

The starboard lateral light buoy, *Fl.G.4s* (27° 13'.23 S 153° 07'.27 E), is unlit.

Chart temporarily affected - Aus 236

1026(T)/2022 AUSTRALIA - QUEENSLAND - Upstart Bay - Obstructions

Maritime Safety Queensland

Obstructions on the seabed exist within a 1M radius of position 19° 44'.13 S 147° 40'.74 E.

Mariners area advised not to anchor or trawl in the area.

Chart temporarily affected - Aus 826

31(T)/2023 AUSTRALIA - QUEENSLAND - Newman Reef - Beacon

Australian Maritime Safety Authority

The west cardinal beacon (10° 03'.59 S 143° 10'.01 E) structure is temporarily coloured BY.

Chart temporarily affected - Aus 837 - Aus 839

67(T)/2023 AUSTRALIA - QUEENSLAND - Townsville - Shoaling

Maritime Safety Queensland

Flooding and latest survey shows shoaler depths than those charted may exist in Ross River between positions 19° 15'.36 S 146° 50'.85 E and 19° 17'.00 S 146° 49'.51 E.

Mariners are advised to navigate with caution in the area.

Charts will be updated in due course.

Chart temporarily affected - Aus 256

68(T)/2023 AUSTRALIA - QUEENSLAND - Townsville - Obstructions

Maritime Safety Queensland Notice 24(T)/2023

Due to recent flooding, floating and submerged obstructions may exist in the coastal waters between Dunk Island (17° 56'.72 S 146° 09'.47 E) and Bowen (20° 00'.54 S 148° 17'.40 E).

Mariners are advised to navigate with caution in the area.

Chart temporarily affected - Aus 255 - Aus 256 - Aus 268 - Aus 825 - Aus 826 - Aus 827 - Aus 828 - Aus 829

99(T)/2023 AUSTRALIA - QUEENSLAND - Brisbane River - Lytton and Quarantine Reach - Obstruction; light buoy
Maritime Safety Queensland Notice 37(T)/2023

An obstruction marked by a special light buoy, *Fl. Y. 2-5s*, exists in position 27° 24'.74 S 153° 08'.90 E.

Chart temporarily affected - Aus 237

134(T)/2023 AUSTRALIA - QUEENSLAND - Boyd Point - Light buoy off station westwards
Department of Agriculture and Fisheries

The special light buoy, *Fl. Y. 3s FAD* (12° 54'.71 S 141° 22'.63 E), is off station and is currently in position 12° 56'.45 S 141° 22'.19 E.

Chart temporarily affected - Aus 301

138(T)/2023 AUSTRALIA - QUEENSLAND - Weipa - South Channel - Light buoy off station
Maritime Safety Queensland Notice 65(T)/2023

The special light buoy, *Fl(5) Y. 20s* (12° 41'.28 S 141° 41'.09 E), is off station.

Chart temporarily affected - Aus 4

195(T)/2023 AUSTRALIA - QUEENSLAND - Cleveland Bay - Scientific instruments
Former Notice - 737(T)/2021 is cancelled
Maritime Safety Queensland Notice 67(T)/2023

Special light buoys, *Fl. Y. 2-5s*, exist in the following positions:

19° 02'.34 S 146° 36'.93 E
19° 06'.45 S 146° 32'.48 E
19° 07'.34 S 146° 52'.92 E
19° 09'.32 S 146° 52'.10 E
19° 11'.20 S 146° 50'.34 E
19° 11'.81 S 146° 49'.07 E
19° 12'.19 S 146° 59'.41 E
19° 12'.79 S 146° 47'.55 E
19° 13'.58 S 146° 56'.98 E
19° 14'.05 S 146° 49'.50 E
19° 14'.80 S 146° 48'.90 E
19° 14'.91 S 146° 50'.92 E
19° 15'.18 S 146° 51'.11 E.

Chart temporarily affected - Aus 256 - Aus 827

242(T)/2023 AUSTRALIA - QUEENSLAND - Moreton Bay - North West Channel - Light beacon unlit
Maritime Safety Queensland Notice 68(T)/2023

The port lateral light beacon, *Fl. R. 2-5s NW6* (26° 53'.56 S 153° 10'.72 E), is unlit.

Chart temporarily affected - Aus 236

244(T)/2023 AUSTRALIA - QUEENSLAND - Townsville - Mooring buoy
Maritime Safety Queensland Notice 108(T)/2023

A lit yellow mooring buoy, *Fl. Y. 2-5s*, exists in position 19° 14'.03 S 146° 50'.90 E.

Chart temporarily affected - Aus 256

286(T)/2023 AUSTRALIA - TORRES STRAIT - Horn Island - Wasaga - Wreck
Former Notice - 574(T)/2022 is cancelled
Maritime Safety Queensland Notice 311(T)/2022

A wreck marked by a special light buoy, *Fl.Y.2·5s*, exists in position 10° 35'.37 S 142° 14'.65 E.

Mariners are advised to navigate with caution in the area.

Chart temporarily affected - Aus 299

357(T)/2023 AUSTRALIA - QUEENSLAND - Gold Coast Seaway - Wreck eastwards

Australian Maritime Safety Authority Auscoast Warning 95/2023

A wreck exists in the vicinity of position 27° 53'.8 S 153° 38'.5 E.

Chart temporarily affected - Aus 814

360(T)/2023 AUSTRALIA - QUEENSLAND - Hinchinbrook Channel - Light buoy off station

Maritime Safety Queensland Notice 168(T)/2023

The starboard lateral light buoy, *Fl.G.4·3s No15* (18° 29'.63 S 146° 17'.30 E), is off station.

Chart temporarily affected - Aus 259

361(T)/2023 AUSTRALIA - QUEENSLAND - Hinchinbrook Island - Missionary Bay - Light beacon destroyed

Former Notice - 319(T)/2023 is cancelled

Maritime Safety Queensland Notice 169(T)/2023

The special light beacon, *Fl.Y.3s* (18° 15'.20 S 146° 11'.79 E), has been destroyed; a special light buoy, *Fl.Y.3s*, exists in situ.

Mariners are advised to navigate with caution in the area.

Chart temporarily affected - Aus 259 - Aus 828

362(T)/2023 AUSTRALIA - QUEENSLAND - Orpheus Island - Light buoy removed

Former Notice - 275(T)/2023 is cancelled

Australian Institute of Marine Science

The black and yellow light buoy, *Fl.Y.2·5s* (18° 34'.35 S 146° 29'.87 E), has been temporarily removed for maintenance.

Chart temporarily affected - Aus 827 - Aus 828

396(T)/2023 AUSTRALIA - QUEENSLAND - Brisbane River - Inner Bar Reach - Obstruction

Maritime Safety Queensland Notice 192(T)/2023

An obstruction, with safe clearance depth 13.9m, exists in position 27° 21'.99 S 153° 10'.14 E.

Chart temporarily affected - Aus 237

398(T)/2023 AUSTRALIA - QUEENSLAND - Caloundra Head - Light unlit

Maritime Safety Queensland Notice 187(T)/2023

The light, *LFl.WR.10s 31m 8M* (26° 48'.13 S 153° 09'.04 E), is unlit.

Chart temporarily affected - Aus 236 - Aus 815

444(T)/2023 AUSTRALIA - QUEENSLAND - Mackay - Scientific instrument

Maritime Safety Queensland Notice 204(T)/2023

A special light buoy, *Fl(5)Y.20s*, exists in position 21° 06'.46 S 149° 14'.39 E.

Chart temporarily affected - Aus 249 - Aus 250

484(T)/2023 AUSTRALIA - QUEENSLAND - Fitzroy River - Middle Channel - Scientific instrument

Maritime Safety Queensland Notice 229(T)/2023

A special light buoy, *Fl.Y.5s*, exists in position 23° 27'.85 S 150° 56'.60 E.

Chart temporarily affected - Aus 265 - Aus 819

485(T)/2023 AUSTRALIA - QUEENSLAND - Mackay - Harbour works

Former Notice - 198(T)/2023 is cancelled

Maritime Safety Queensland Notice 235(T)/2023

Works associated with the construction of a NIB wall are in progress in an area bounded by the coast and the following:

<i>Positions</i>	<i>Remarks</i>
21° 06'.66 S 149° 13'.78 E	marked by special light buoy, <i>Fl.Y.1.5s</i>
21° 06'.65 S 149° 13'.76 E	marked by special light buoy, <i>Fl.Y.1.5s</i>
21° 06'.64 S 149° 13'.74 E	marked by special light buoy, <i>Fl.Y.1.5s</i>
21° 06'.64 S 149° 13'.72 E	marked by special light buoy, <i>Fl.Y.1.5s</i>
21° 06'.64 S 149° 13'.72 E	marked by special light buoy, <i>Fl.R.3s</i>
21° 06'.66 S 149° 13'.72 E	marked by special light buoy, <i>Fl.Y.1.5s</i>
21° 06'.67 S 149° 13'.74 E	marked by special light buoy, <i>Fl.Y.1.5s</i> .

Mariners are advised to navigate with caution in the area and keep well clear.

Chart temporarily affected - Aus 250

526(T)/2023 AUSTRALIA - QUEENSLAND - Karumba - Scientific instruments

Maritime Safety Queensland Notice 240(T)/2023

Special light buoys, *Fl.Y.1.7s*, exist in the following positions:

17° 26'.32 S 140° 44'.72 E
17° 26'.78 S 140° 45'.40 E
17° 27'.69 S 140° 49'.33 E.

Chart temporarily affected - Aus 6

563(T)/2023 AUSTRALIA - QUEENSLAND - Gladstone - South Passage Island - Scientific instrument

Former Notice - 530(T)/2022 is cancelled

Maritime Safety Queensland Notice 290(T)/2023

A special light buoy, *Fl.Y.6s*, exists in position 23° 47'.06 S 151° 11'.13 E.

Chart temporarily affected - Aus 245

613(T)/2023 AUSTRALIA - QUEENSLAND - Hay Point - Obstruction; light buoy

Maritime Safety Queensland Notice 312(T)/2023

An obstruction marked by a special light buoy, *Fl.Y.6s*, exists in position 21° 17'.40 S 149° 18'.14 E.

Chart temporarily affected - Aus 250

614(T)/2023 AUSTRALIA - QUEENSLAND - Mackay - Obstruction; light buoy

Maritime Safety Queensland Notice 311(T)/2023

An obstruction marked by a special light buoy, *Fl.Y.6s*, exists in position 21° 06'.63 S 149° 13'.90 E.

Chart temporarily affected - Aus 250

663(T)/2023 AUSTRALIA - QUEENSLAND - Cape Flattery - Scientific instrument

Former Notice - 237(T)/2022 is cancelled

Maritime Safety Queensland Notice 331(T)/2023

A special light buoy, *Fl(5)Y.20s*, exists in position 14° 55'.70 S 145° 20'.72 E.

Chart temporarily affected - Aus 832

707(T)/2023 AUSTRALIA - QUEENSLAND - Noosa Head - Scientific instrument

Maritime Safety Queensland Notice 355(T)/2023

A special light buoy, *Fl(5)Y.20s*, exists in position 26° 21'.62 S 153° 07'.58 E.

Chart temporarily affected - Aus 815

710(T)/2023 AUSTRALIA - QUEENSLAND - Surfers Paradise - Light buoy off station; obstruction eastwards
Department of Agriculture and Fisheries

The special light buoy, *Fl.Y.3s FAD* (27° 59'.27 S 153° 31'.75 E), is off station.

An obstruction exists in position 27° 59'.14 S 153° 35'.95 E.

Chart temporarily affected - Aus 814

711(T)/2023 AUSTRALIA - QUEENSLAND - Whitsunday Passage - Exclusion zone
Maritime Safety Queensland Notice 363(T)/2023, Australian Maritime Safety Authority Auscoast Warning 192/2023

An exclusion zone, marked by four virtual AIS, for search and recovery operations exists in an area bounded by the following positions:

20° 23'.47 S 148° 54'.83 E
20° 23'.48 S 148° 58'.09 E
20° 26'.49 S 148° 58'.10 E
20° 26'.52 S 148° 54'.88 E.

Vessels not involved in the operations are to remain well clear of the exclusion zone.

Mariners are advised to navigate with caution in the area.

Chart temporarily affected - Aus 252 - Aus 253 - Aus 824

753(T)/2023 AUSTRALIA - QUEENSLAND - Brisbane River - Hamilton Reach - Lights unlit
Maritime Safety Queensland Notice 390(T)/2023

The light, *Iso.R.2s (F.Y Day) No13RS* (27° 26'.99 S 153° 05'.49 E), is unlit.

The light beacon, *Q.R (F Day)* (27° 26'.96 S 153° 05'.41 E), is unlit. A temporary port lateral light, *Fl.R.4s*, has been established on the beacon.

Mariners are advised to navigate with caution in the area.

Chart temporarily affected - Aus 237

757(T)/2023 AUSTRALIA - QUEENSLAND - Hay Point - Mooring buoys
Former Notice - 358(T)/2023 is cancelled
Maritime Safety Queensland Notice 383(T)/2023

Daytime mooring buoys exist in the following positions:

21° 17'.75 S 149° 18'.48 E
21° 17'.74 S 149° 18'.71 E
21° 17'.73 S 149° 18'.92 E.

A cyclone mooring buoy exists in position 21° 20'.02 S 149° 23'.27 E.

Chart temporarily affected - Aus 249 - Aus 250

758(T)/2023 AUSTRALIA - QUEENSLAND - Hay Point - Mooring buoy
Maritime Safety Queensland Notice 384(T)/2023

A lit yellow mooring buoy, *Fl.Y.3s*, exists in position 21° 17'.33 S 149° 17'.90 E.

Chart temporarily affected - Aus 250

759(T)/2023 AUSTRALIA - QUEENSLAND - Karumba - Shoaling
Former Notice - 378(T)/2021 is cancelled
Maritime Safety Queensland Notice 382(T)/2023

Shoaling exists in the entrance channel between light beacon No8 (17° 26'.36 S 140° 44'.73 E) and light beacon No10 (17° 26'.65 S 140° 45'.32 E).

Mariners should navigate between the Elbow Bank lateral light buoys to follow the change in channel position.

Mariners are advised to navigate with caution in the area.

Chart temporarily affected - Aus 6

761(T)/2023 AUSTRALIA - QUEENSLAND - Orpheus Island - Obstructions; light buoys

Maritime Safety Queensland Notice 371(T)/2023

Aluminium biofilter pods exist on the seabed between two special light buoys, *Fl.Y.2-5s*, in positions 18° 36'.23 S 146° 28'.81 E and 18° 36'.13 S 146° 28'.80 E.

Mariners are advised not to navigate between the buoys and to navigate with caution in the area.

Chart temporarily affected - Aus 827 - Aus 828

764(T)/2023 AUSTRALIA - QUEENSLAND - Yorkeys Knob - Shoaling; light buoy

Maritime Safety Queensland Notice 381(T)/2023

Shoaling exists at the entrance to the marina and is marked by a special light buoy, *Fl.Y.2-5s*, in position 16° 48'.03 S 145° 43'.00 E.

Mariners are advised to navigate with caution in the area.

Chart temporarily affected - Aus 262

811(T)/2023 AUSTRALIA - QUEENSLAND - Gladstone - North Channel to North Passage Island - Scientific instruments

Former Notice - 665(T)/2023 is cancelled

Maritime Safety Queensland Notice 317(T)/2023

Special light buoys, *Fl.Y.6s*, exist in the following positions:

23° 45'.92 S 151° 10'.87 E

23° 46'.05 S 151° 10'.09 E

23° 46'.97 S 151° 18'.38 E

23° 48'.30 S 151° 12'.57 E.

Chart temporarily affected - Aus 245

813(T)/2023 AUSTRALIA - QUEENSLAND - Moreton Bay - Bramble Bay - Pine River - Obstruction; light buoy

Maritime Safety Queensland Notice 398(T)/2023

An obstruction marked by a special light buoy, *Fl.Y.2-5s*, exists in position 27° 16'.48 S 153° 04'.19 E.

Chart temporarily affected - Aus 236

814(T)/2023 AUSTRALIA - QUEENSLAND - Moreton Island - Survey operations northwards

Fugro

Vessel *Pacific Conquest* is conducting survey operations in an area bounded by the following positions:

26° 25'.97 S 153° 33'.83 E

26° 25'.97 S 153° 30'.61 E

26° 37'.75 S 153° 21'.67 E

26° 37'.74 S 153° 15'.66 E

26° 49'.00 S 153° 15'.83 E

26° 50'.38 S 153° 11'.26 E

26° 51'.92 S 153° 12'.21 E

26° 56'.73 S 153° 26'.57 E

26° 56'.74 S 153° 34'.78 E

26° 37'.75 S 153° 36'.04 E.

Tide gauges exist on the seabed in the following positions:

26° 25'.1 S 153° 32'.2 E
26° 34'.1 S 153° 24'.3 E
26° 36'.1 S 153° 34'.0 E
26° 38'.1 S 153° 15'.3 E
26° 45'.6 S 153° 24'.5 E
26° 46'.5 S 153° 33'.1 E
26° 48'.6 S 153° 15'.5 E
26° 56'.6 S 153° 20'.1 E
26° 57'.2 S 153° 31'.1 E.

Current meters exist on the seabed in the following positions:

26° 34'.1 S 153° 24'.3 E
26° 38'.1 S 153° 15'.3 E
26° 56'.6 S 153° 20'.1 E.

Mariners are advised to navigate with caution in the area.

Chart temporarily affected - Aus 236 - Aus 814 - Aus 815

816(T)/2023 AUSTRALIA - QUEENSLAND - Townsville - Pump discharge

Former Notice - 201(T)/2023 is cancelled

Maritime Safety Queensland Notice 402(T)/2023

Dewatering of the reclamation pond is in progress in the vicinity of position 19° 15'.05 S 146° 50'.99 E.

The discharge area is marked by a special light buoy, *Fl. Y. 2.5s*, in position 19° 15'.04 S 146° 51'.02 E.

The water discharge will create strong currents and bubbling on the sea surface in the area.

Mariners are advised not to approach within 100m of the northern rock wall and not to transit between the special light buoy and the rock wall.

Chart temporarily affected - Aus 256

817(T)/2023 AUSTRALIA - QUEENSLAND - Townsville - Dredging operations

Maritime Safety Queensland Notice 412(T)/2022

The dredge *Brisbane* is conducting dredging operations in the Sea Channel, Platypus Channel and the swing basins.

The dredge will display appropriate lights and shapes and monitor VHF Ch 12 and Ch 16.

Mariners are advised to navigate with caution in the area.

Chart temporarily affected - Aus 256 - Aus 827

857(T)/2023 AUSTRALIA - TORRES STRAIT - Cook Reef - Scientific instruments southwards

Fugro

Subsurface scientific instruments which may be marked by special light buoys, *Fl. 2.5s* or *Fl. 3s*, exist in an area bounded by the following positions:

10° 32'.64 S 141° 11'.52 E
10° 44'.20 S 141° 18'.04 E
10° 44'.20 S 141° 30'.39 E
10° 32'.55 S 141° 30'.39 E
10° 32'.55 S 141° 38'.00 E
10° 42'.71 S 141° 38'.00 E
10° 34'.52 S 141° 49'.31 E
10° 31'.11 S 141° 49'.31 E
10° 21'.16 S 141° 28'.59 E
10° 20'.52 S 141° 11'.50 E.

Mariners are advised to navigate with caution in the area.

Chart temporarily affected - Aus 294 - Aus 296 - Aus 301 - Aus 700 - Aus 842

NORTHERN TERRITORY

211(T)/2021 AUSTRALIA - NORTHERN TERRITORY - Darwin - East Arm - Scientific instruments

Department of Infrastructure, Planning and Logistics NT Notice 21(T)/2019

Special light buoys, *Fl(5)20s*, exist in positions 12° 30'.22 S 130° 54'.24 E and 12° 30'.20 S 130° 54'.20 E.

Chart temporarily affected - Aus 26

215(T)/2021 AUSTRALIA - NORTHERN TERRITORY - Darwin Naval Base - Harbour works; exclusion zone

Department of Infrastructure, Planning and Logistics NT Notice 63/2020

Harbour works associated with wharf redevelopment are in progress in an area bounded by the coast and the following:

<i>Position</i>	<i>Remarks</i>
12° 27'.49 S 130° 49'.05 E	
12° 27'.52 S 130° 48'.98 E	special light buoy, <i>Fl.Y</i>
12° 27'.56 S 130° 48'.95 E	special light buoy, <i>Fl.Y</i>
12° 27'.61 S 130° 48'.92 E	special light buoy, <i>Fl.Y</i>
12° 27'.68 S 130° 48'.96 E	special light buoy, <i>Fl.Y</i>
12° 27'.85 S 130° 49'.25 E	special light buoy, <i>Fl.Y</i>
12° 27'.80 S 130° 49'.27 E	special light buoy, <i>Fl.Y</i>
12° 27'.76 S 130° 49'.30 E	special light buoy, <i>Fl.Y</i>
12° 27'.73 S 130° 49'.32 E.	

An exclusion zone exists in the area and only authorised vessels are permitted to enter.

Mariners are advised to keep well clear and to navigate with caution in the area.

Chart temporarily affected - Aus 25 - Aus 26

183(T)/2022 INDIAN OCEAN - Christmas Island - Mooring buoy off station

L Mioceovich

The mooring buoy (10° 25'.92 S 105° 39'.5 E) is off station and is currently in position 10° 26'.48 S 105° 39'.45 E.

Chart temporarily affected - Aus 920

832(T)/2022 AUSTRALIA - NORTHERN TERRITORY - Apsley Strait - Light buoy off station

Northern Territory Government Notice 33(T)/2022

The starboard lateral light buoy, *Fl.G.4s* (11° 43'.81 S 130° 36'.07 E), is off station.

Chart temporarily affected - Aus 23

834(T)/2022 AUSTRALIA - NORTHERN TERRITORY - Beagle Gulf - Drill rig

MODU *Valaris MS-1*

Drill rig *Valaris MS-1* is moored in position 12° 02'.15 S 130° 13'.62 E.

Chart temporarily affected - Aus 309

622(T)/2023 AUSTRALIA - NORTHERN TERRITORY - Darwin - Bladin Point - Light beacon unlit

Northern Territory Government Notice 58(T)/2022

The light beacon, *F.Bu* & *Fl.Y.2s* (12° 30'.47 S 130° 55'.27 E), is unlit.

Chart temporarily affected - Aus 26

678(T)/2023 AUSTRALIA - NORTHERN TERRITORY - Goodrich Bank - Light buoy off station northwestwards

Australian Bureau of Meteorology

The special light buoy, *Fl(5)Y.20s* (10° 19'.19 S 129° 57'.15 E), is off station.

Chart temporarily affected - Aus 310

714(T)/2023 AUSTRALIA - NORTHERN TERRITORY - Bathurst Island - Survey operations westwards
Ocean Infinity

On or about 22 August 2023, vessel *Seaworker* will be conducting survey operations in an area bounded by the following positions:

11° 49'.82 S 129° 24'.00 E
12° 02'.25 S 129° 42'.23 E
12° 08'.33 S 129° 54'.40 E
12° 08'.32 S 129° 56'.78 E
12° 01'.71 S 129° 56'.76 E
12° 01'.79 S 130° 00'.45 E
11° 36'.67 S 129° 39'.17 E
11° 37'.82 S 129° 16'.40 E.

Subsurface scientific instruments exist in the following positions:

11° 35'.0 S 129° 39'.6 E
11° 36'.7 S 129° 13'.8 E
11° 37'.3 S 129° 27'.8 E
11° 49'.5 S 129° 50'.1 E
11° 49'.8 S 129° 37'.1 E
11° 49'.9 S 129° 22'.5 E
11° 57'.6 S 129° 57'.7 E
11° 58'.1 S 129° 33'.9 E
12° 05'.2 S 129° 46'.9 E
12° 08'.8 S 129° 57'.7 E.

Scientific instruments may be marked by special light buoys, *Fl. Y.3-2s*.

Mariners are advised to navigate with caution in the area.

Chart temporarily affected - Aus 309

717(T)/2023 AUSTRALIA - TIMOR SEA - Evans Shoal - Survey operations
Northern Territory Government Notice 27(T)/2023

MV *Riverside Guardian* and a ROV are conducting survey operations in an area bounded by the following positions:

10° 09'.40 S 129° 28'.40 E
10° 09'.40 S 129° 35'.93 E
9° 52'.66 S 129° 35'.93 E
9° 52'.66 S 129° 28'.40 E.

The vessel will display appropriate lights and shapes and will monitor VHF Ch 10 and Ch 16.

Mariners are advised to navigate with caution in the area and keep well clear of the survey vessel and deployed equipment.

Chart temporarily affected - Aus 310

765(T)/2023 AUSTRALIA - NORTHERN TERRITORY - Clarence Strait - Adam Bay - Obstructions; wrecks
EGS Survey Pty Ltd

Obstructions exist as follows:

<i>Position</i>	<i>Remarks</i>
12° 07'.88 S 131° 08'.99 E	least depth 11.9m
12° 07'.59 S 131° 11'.54 E	least depth 10.7m.

Wrecks exist as follows:

<i>Position</i>	<i>Remarks</i>
12° 08'.37 S 131° 11'.25 E	least depth 11.4m
12° 05'.67 S 131° 13'.44 E	least depth 9.1m
12° 05'.10 S 131° 14'.34 E	least depth 13.0m.

Chart temporarily affected - Aus 20

867(T)/2023 INDIAN OCEAN - Roo Rise - Light buoy off station
Australian Bureau of Meteorology

The special light buoy, *Fl.Y.2s* (12° 19'.20 S 108° 30'.75 E), is off station.

Chart temporarily affected - Aus 4708 (INT 708) - Aus 4723 (INT 723)

891(T)/2023 AUSTRALIA - NORTHERN TERRITORY - Bathurst Island - Pipe laying operations; survey operations westwards

Allseas Marine Contractors Australia

On or about 26th October, vessels *Audacia* and *Fortitude* are conducting pipe laying and survey operations between the following positions:

9° 49'.25 S 130° 15'.80 E
10° 43'.81 S 130° 17'.02 E
11° 11'.81 S 129° 59'.90 E
12° 01'.46 S 129° 54'.45 E.

Mariners are advised to navigate with caution in the area.

Note: For e-notice users, please see full edition for map.

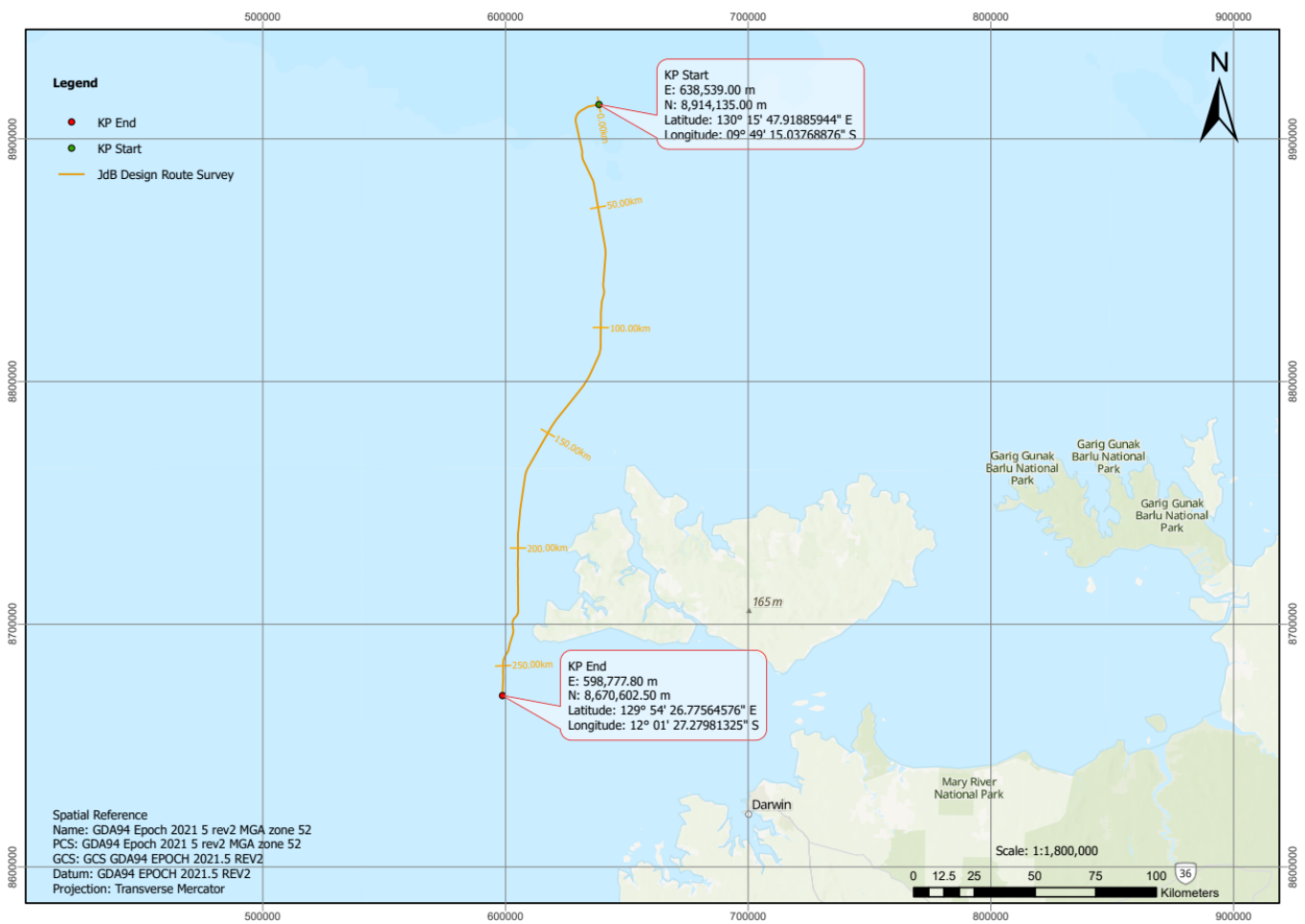


Chart temporarily affected - Aus 22 - Aus 309 - Aus 310

893(T)/2023 AUSTRALIA - NORTHERN TERRITORY - Darwin - Mooring buoy off station

Sea Swift

The lit mooring buoy, *Fl.Y.2-5s* (12° 25'.10 S 130° 47'.74 E), is off station.

Chart temporarily affected - Aus 25

904(T)/2023 INDIAN OCEAN - Cocos Islands - Light buoy

LINX

A special light buoy, *FIY.2.5s*, exists in position 12° 08'.65 S 96° 51'.95 E.

Chart temporarily affected - Aus 607

WESTERN AUSTRALIA

1078(P)/2015 AUSTRALIA - WESTERN AUSTRALIA - East Holothuria Reef - Shoaling HMAS Mermaid

Depths less than 6m have been reported in the vicinity of position 13° 33'.6 S 126° 10'.8 E.

Mariners are advised to navigate with caution in the area.

Chart which will be affected - Aus 318 - Aus 319 - Aus 727 - Aus 728

291(T)/2019 AUSTRALIA - WESTERN AUSTRALIA - Barrow Island - Well abandonment works northwestwards Chevron Australia

Sixteen anchors and mooring lines have been installed around the well in position 20° 24'.49 S 114° 50'.95 E.

Mariners are advised to navigate with caution in the area.

Chart temporarily affected - Aus 328

1165(T)/2019 AUSTRALIA - WESTERN AUSTRALIA - Garden Island - Beacon Head - Obstruction; light buoy Fremantle Ports Notice 6(T)/2019, Department of Transport WA

An obstruction marked by a spherical isolated danger light buoy, *Fl(2)10s*, exists in position 32° 09'.16 S 115° 40'.65 E.

Chart temporarily affected - Aus 117

1285(T)/2019 AUSTRALIA - WESTERN AUSTRALIA - Port Walcott - Outer North Channel - Tide gauge Australian Maritime Safety Authority Auscoast Warning 288/2016

A tide gauge marked by a special light buoy, *Q*, exists in position 20° 24'.95 S 117° 23'.35 E.

Chart temporarily affected - Aus 55 - Aus 326

212(T)/2020 AUSTRALIA - WESTERN AUSTRALIA - Rottnest Island - Scientific instruments northwestwards CSIRO

Subsurface scientific instruments exist as follows:

<i>Position</i>	<i>Depth below surface</i>
31° 38'.8 S 115° 11'.8 E	24m
31° 43'.7 S 115° 02'.5 E	23m
31° 45'.9 S 114° 57'.9 E	496m
31° 59'.0 S 115° 13'.7 E	180m
31° 59'.4 S 115° 23'.1 E	22m
32° 00'.0 S 115° 25'.0 E	46m

Chart temporarily affected - Aus 754

401(T)/2021 AUSTRALIA - WESTERN AUSTRALIA - Fremantle - Dredging operations Fremantle Ports Notice 2/2018

The dredge *Modi-R* is conducting dredging operations in an area bounded by the following positions:

32° 08'.33 S 115° 42'.20 E
32° 08'.27 S 115° 42'.40 E
32° 03'.60 S 115° 41'.34 E
32° 03'.63 S 115° 41'.13 E.

Mariners are advised to navigate with caution in the area.

Chart temporarily affected - Aus 112 - Aus 117 - Aus 754

404(T)/2021 AUSTRALIA - WESTERN AUSTRALIA - Koolan Island - Mooring buoy Trinacria Consulting

The mooring buoy (16° 09'.15 S 123° 45'.05 E) has sunk in position.

Chart temporarily affected - Aus 40 - Aus 41

647(T)/2021 AUSTRALIA - WESTERN AUSTRALIA - Ashburton Island - Scientific instrument northwards
Pilbara Ports Authority Notice A9(T)/2021

A subsurface scientific instrument, with a least depth of *11m*, exists in position 21° 32'.43 S 114° 56'.01 E.

Chart temporarily affected - Aus 64 - Aus 328 - Aus 743 - Aus 744

653(T)/2021 AUSTRALIA - WESTERN AUSTRALIA - Onslow - Beadon Creek - Harbour works
Department of Transport WA Notice 90(T)/2021

Vessels *Margaret* and *Beadon Creek* are conducting wharf extension operations in the vicinity of position 21° 38'.68 S 115° 07'.86 E. Special light buoys, *Fl.Y*, have been established around the works.

All vessels will display appropriate lights and shapes, and will monitor VHF Ch 16.

Mariners are advised to navigate with caution in the area.

Chart temporarily affected - Aus 64

987(P)/2021 AUSTRALIA - WESTERN AUSTRALIA - Bonaparte Archipelago - D'Arcole Islands to Augereau Island - Shoaling
European Space Agency

In and around the D'Arcole Islands (14° 54'.97 S 124° 44'.43 E) and Augereau Island (14° 45'.33 S 125° 07'.78 E) latest survey shows the existence of numerous shoaler depths than those charted.

The most significant shoals are as follows:

<i>Position</i>	<i>Depth</i>
14° 43'.71 S 125° 04'.91 E	<i>6.7m</i>
14° 44'.82 S 125° 05'.02 E	<i>9.7m</i>
14° 45'.05 S 125° 05'.55 E	<i>8.9m</i>
14° 49'.37 S 125° 07'.51 E	<i>7.4m</i>
14° 52'.96 S 124° 43'.51 E	<i>1.0m</i>
14° 54'.01 S 124° 44'.13 E	<i>3.3m</i>
14° 55'.03 S 124° 39'.57 E	<i>1.8m</i>
14° 56'.09 S 124° 43'.45 E	<i>3.6m</i>
14° 57'.10 S 124° 39'.44 E	<i>1.2m</i>
14° 57'.22 S 124° 46'.19 E	<i>1.8m</i>
14° 57'.83 S 124° 39'.85 E	<i>0.9m</i>
15° 00'.80 S 124° 37'.79 E	<i>3.7m</i>

Mariners are advised to navigate with caution in the area.

Charts will be updated in due course.

Chart which will be affected - Aus 37 - Aus 320 - Aus 729 - Aus 730

1075(T)/2021 AUSTRALIA - WESTERN AUSTRALIA - Port of Ashburton - Scientific instrument
Pilbara Ports Authority Notice A14(T)/2021

A scientific instrument exists on the seabed in position 21° 40'.45 S 115° 01'.35 E.

Chart temporarily affected - Aus 64 - Aus 743

130(T)/2022 AUSTRALIA - WESTERN AUSTRALIA - Carnarvon - Fascine Waterway - Shoaling
Department of Transport WA

Significant shoaling exists in an area bounded by the following positions:

24° 54'.44 S 113° 38'.46 E
24° 54'.51 S 113° 38'.84 E
24° 53'.95 S 113° 38'.52 E

24° 53'.96 S 113° 38'.31 E.

Mariners are advised to navigate with caution in the area.

Chart temporarily affected - Aus 73

212(T)/2022 AUSTRALIA - WESTERN AUSTRALIA - King George Sound - Scientific instruments

Department of Transport WA Notice 255/2022

Special light buoys, *Fl.Y.4·5s*, exist in positions 35° 03'.20 S 118° 00'.91 E and 35° 05'.00 S 118° 00'.36 E.

Chart temporarily affected - Aus 118

287(T)/2022 AUSTRALIA - WESTERN AUSTRALIA - Bundegi Reef - Scientific instrument

Department of Transport WA Notice 792/2022

A special light buoy, *Fl.Y.2·5s*, exists in position 21° 52'.15 S 114° 12'.23 E.

Chart temporarily affected - Aus 328 - Aus 329 - Aus 744 - Aus 745

509(T)/2022 AUSTRALIA - WESTERN AUSTRALIA - Trigg Island - Scientific instruments westwards

Former Notice - 498(T)/2020 is cancelled

Department of Transport WA Notice 66/2020

Special light buoys exist as follows:

<i>Position</i>	<i>Remarks</i>
31° 52'.70 S 115° 43'.11 E	<i>Q(5)Y.20s</i>
31° 52'.59 S 115° 43'.12 E	<i>Q(5)Y.20s</i>
31° 52'.53 S 115° 43'.32 E	<i>Fl.Y.5s.</i>

Chart temporarily affected - Aus 112

623(T)/2022 AUSTRALIA - WESTERN AUSTRALIA - Bunbury - Koombana Bay - Harbour works

Department of Transport WA Notice 1852/2022

On or about 17 August 2022, works associated with the demolition and construction of the boat ramp in the vicinity of position 33° 18'.71 S 115° 38'.28 E will commence.

The works area will be marked by special light buoys.

The barge *TMC1* and support vessels will be conducting piling operations and unlit piles may exist in the area.

All vessels will display appropriate lights and shapes and will monitor VHF Ch 16.

The boat ramp will be closed for the duration of the works.

Mariners are advised to navigate with caution in the area.

Chart temporarily affected - Aus 115

845(T)/2022 AUSTRALIA - WESTERN AUSTRALIA - Ningaloo Reef - Tantabiddi Passage - Light buoy off station

Department of Transport WA

The orange light buoy, *Fl(5)Y.20s* (21° 53'.62 S 113° 55'.71 E), is off station.

Chart temporarily affected - Aus 745

1032(T)/2022 AUSTRALIA - WESTERN AUSTRALIA - Geographe Bay - Scientific instruments

Former Notice - 800(T)/2022 is cancelled

Department of Transport WA Notice 2792/2022

Special light buoys, *Fl.Y.2·5s*, exist in the following positions:

33° 35'.49 S 115° 06'.99 E
33° 36'.01 S 115° 14'.99 E
33° 37'.62 S 115° 20'.28 E.

Chart temporarily affected - Aus 755

1036(T)/2022 AUSTRALIA - WESTERN AUSTRALIA - Mullaloo - Scientific instruments

Department of Transport WA Notice 5463/2022

Scientific instruments, 4m below the surface, exist in positions 31° 45'.82 S 115° 42'.64 E and 31° 47'.43 S 115° 42'.34 E.

Chart temporarily affected - Aus 754

1039(T)/2022 AUSTRALIA - WESTERN AUSTRALIA - South West Break to Staggie Reef - Scientific instruments

Department of Transport WA Notice 5456/2022

Scientific instruments, 4m below the surface, exist in the following positions:

31° 34'.33 S 115° 35'.61 E

31° 38'.12 S 115° 38'.07 E

31° 42'.36 S 115° 38'.93 E.

Chart temporarily affected - Aus 754

40(T)/2023 AUSTRALIA - WESTERN AUSTRALIA - Port Hedland to Cuvier Abyssal - Cable laying operations

Gulf Agency Company (Australia)

Vessel *Ille De Re* is conducting cable laying operations between the following positions:

19° 54'.55 S 118° 36'.45 E

19° 13'.78 S 116° 42'.60 E

19° 32'.49 S 114° 00'.63 E

20° 06'.88 S 111° 08'.88 E

20° 52'.12 S 109° 41'.39 E.

Mariners are advised to navigate with caution in the area. 1M clearance requested.

Note: For e-notice users, please see full edition for map

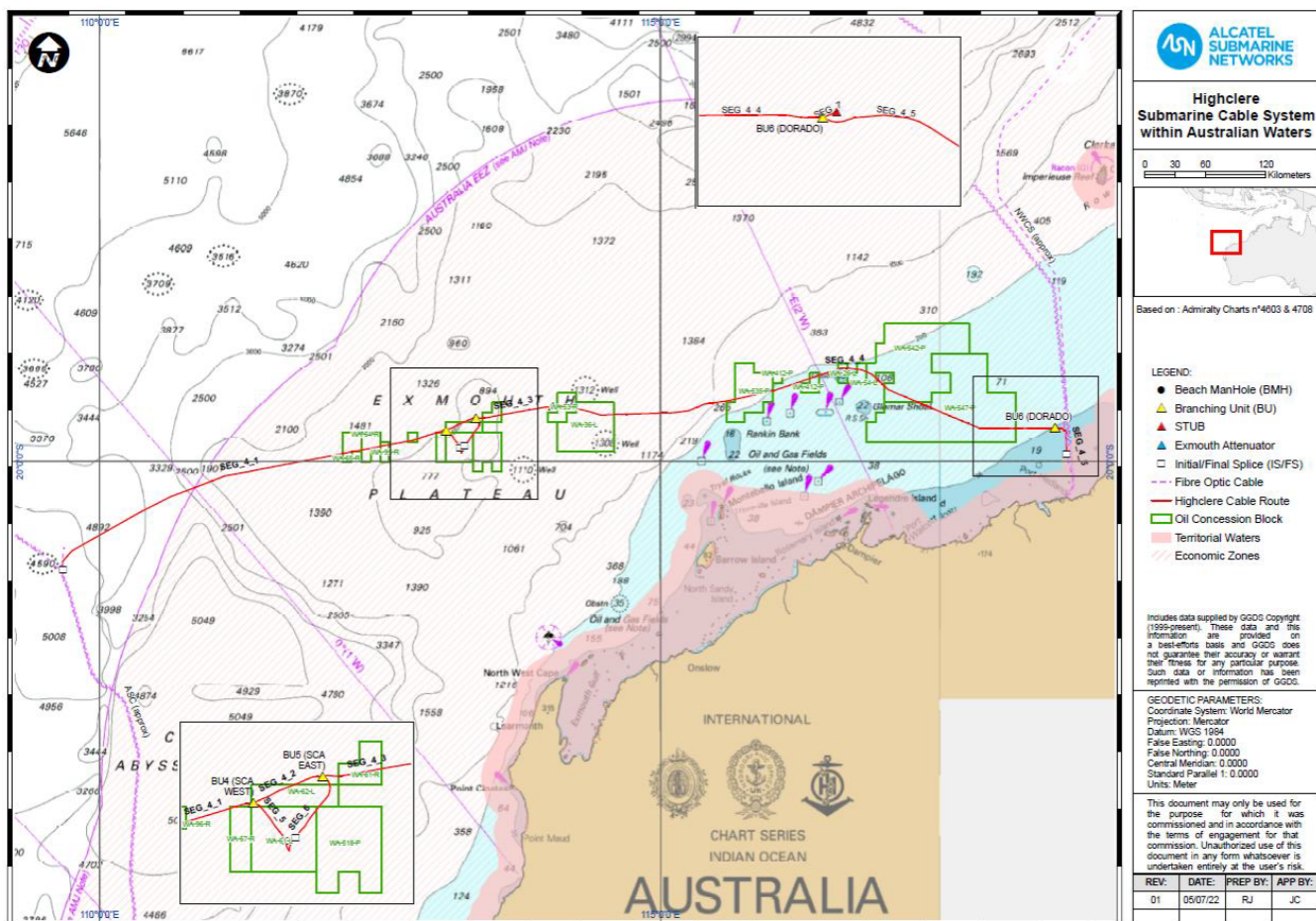


Chart temporarily affected - Aus 53 - Aus 326 - Aus 327 - Aus 328 - Aus 4070 (INT 70) - Aus 4071 (INT 71) - Aus 4603 (INT 603) - Aus 4708 (INT 708) - Aus 4722 (INT 722) - Aus 4723 (INT 723)

75(T)/2023 AUSTRALIA - WESTERN AUSTRALIA - Fremantle - Fishing Boat Harbour - Harbour works
 Department of Transport WA Notice 5515/2023

Reclamation works are in progress in the vicinity of position 32° 03'.78 S 115° 44'.67 E.

The works area will be marked by special light buoys.

Vessels will display appropriate lights and shapes and will monitor VHF Ch 16.

Mariners are advised to navigate with caution in the area and keep well clear.

Chart temporarily affected - Aus 112 - Aus 117

109(T)/2023 AUSTRALIA - WESTERN AUSTRALIA - Montebello Islands - Light buoy
 Former Notice - 39(T)/2023 is cancelled
 Santos

The *Campbell* platform, *Mo(U)Y.15s* (20° 24'.85 S 115° 43'.80 E), is unlit. A special light buoy, *Mo(U)Y.15s*, exists in position 20° 24'.80 S 115° 43'.90 E.

Chart temporarily affected - Aus 327 - Aus 742 - Aus 4723 (INT 723)

111(T)/2023 AUSTRALIA - WESTERN AUSTRALIA - Princess Royal Harbour - Marine farm; light buoys
 Department of Transport WA Notice 5539/2023

A marine farm, marked by special light buoys, *Fl.Y.4s*, exists in an area bounded by the following positions:

35° 04'.48 S 117° 54'.71 E

35° 04'.48 S 117° 54'.74 E

35° 04'.41 S 117° 54'.74 E

35° 04'.41 S 117° 54'.71 E.

Chart temporarily affected - Aus 118

292(T)/2023 AUSTRALIA - WESTERN AUSTRALIA - Dampier - Scientific instruments

Former Notice - 364(T)/2022 is cancelled

O2 Marine

Special light buoys, *Fl. Y. 4s*, exist in the following positions:

20° 17'.97 S 116° 53'.84 E
20° 21'.20 S 116° 50'.45 E
20° 22'.71 S 116° 47'.52 E
20° 26'.75 S 116° 58'.23 E
20° 26'.77 S 116° 37'.53 E
20° 28'.16 S 116° 42'.27 E
20° 28'.26 S 116° 47'.79 E
20° 29'.50 S 116° 49'.06 E
20° 30'.71 S 116° 47'.13 E
20° 31'.54 S 116° 39'.60 E
20° 32'.17 S 116° 46'.67 E
20° 32'.40 S 116° 41'.06 E
20° 32'.42 S 116° 48'.19 E
20° 32'.46 S 116° 46'.40 E
20° 34'.28 S 116° 46'.79 E
20° 35'.14 S 116° 46'.49 E
20° 37'.32 S 116° 44'.70 E
20° 38'.38 S 116° 44'.14 E
20° 40'.26 S 116° 39'.27 E.

Chart temporarily affected - Aus 57 - Aus 59 - Aus 327 - Aus 742

293(T)/2023 AUSTRALIA - WESTERN AUSTRALIA - Dampier Archipelago - Legendre Island - Scientific instrument northwards

Former Notice - 366(T)/2022 is cancelled

O2 Marine

A scientific instrument exists on the seabed in position 20° 17'.89 S 116° 51'.58 E.

Chart temporarily affected - Aus 57 - Aus 327

330(T)/2023 AUSTRALIA - WESTERN AUSTRALIA - Port Hedland - Scientific instruments

Pilbara Ports Authority Notice PH6(T)/2023

Special light buoys, *Q. Y.*, exist as follows:

<i>Positions</i>	<i>Remarks</i>
20° 16'.79 S 118° 34'.86 E	130m exclusion zone exists around the buoy
20° 17'.11 S 118° 35'.51 E	130m exclusion zone exists around the buoy
20° 17'.25 S 118° 30'.88 E	125m exclusion zone exists around the buoy.

Mariners are advised to navigate with caution in the area.

Chart temporarily affected - Aus 53

367(T)/2023 AUSTRALIA - WESTERN AUSTRALIA - Gantheaume Bay - Scientific instrument northwestwards
GHD

A subsurface scientific instrument, 0.5m above the seabed, exists in position 27° 26.89' S 113° 56.97' E.

Chart temporarily affected - Aus 332

455(T)/2023 AUSTRALIA - WESTERN AUSTRALIA - Dampier Archipelago - Madeleine Shoals - Wreck
Australian Maritime Safety Authority

A wreck exists in position 20° 18'.46 S 116° 53'.98 E.

Mariners are advised to navigate with caution in the area.

Chart temporarily affected - Aus 57 - Aus 327

535(T)/2023 AUSTRALIA - WESTERN AUSTRALIA - Bonaparte Archipelago - Bernouilli Island - Obstruction
Australian Maritime Safety Authority

An obstruction has been reported in position 14° 59'.56 S 124° 45'.49 E.

Mariners are advised to navigate with caution in the area.

Chart temporarily affected - Aus 730

538(T)/2023 AUSTRALIA - WESTERN AUSTRALIA - Port of Ashburton - Harbour works

Former Notice - 417(T)/2023 is cancelled

Pilbara Ports Authority Notice A8(T)/2023, A10(T)/2023

Vessels *Pilbara SEMP*, *Pilbara 100*, *Keller Ocean* and *Magestic* are conducting works associated with the construction of a trestle, jetty and associated infrastructure in the vicinity of position 21° 41'.02 S 115° 00'.68 E.

All vessels will display appropriate lights and shapes and will monitor VHF Ch 14 and Ch 16.

A lit mooring buoy, *Fl.Y.3s*, exists in position 21° 39'.77 S 115° 01'.44 E.

Mariners are advised to stay well clear of the mooring buoy and to navigate with caution in the area.

Chart temporarily affected - Aus 64

576(T)/2023 AUSTRALIA - WESTERN AUSTRALIA - Exmouth Plateau - Survey operations

Shearwater

On or about 16 July 2023, MV *Geo Coral*, with an 8334m towed array, and support vessels *Mariska G*, *Limitless* and *Empress* will be conducting survey operations in an area bounded by the following positions:

20° 24'.03 S 113° 06'.75 E
19° 59'.97 S 112° 36'.13 E
19° 20'.66 S 113° 06'.69 E
19° 13'.42 S 113° 33'.82 E
19° 29'.69 S 113° 54'.53 E
19° 54'.70 S 113° 37'.67 E.

Mariners are advised to navigate with caution in the area. 8M clearance requested.

Chart temporarily affected - Aus 328 - Aus 329 - Aus 4723 (INT 723)

579(T)/2023 AUSTRALIA - WESTERN AUSTRALIA - Port Hedland - Spoil Bank - Light beacon installation works

Pilbara Ports Authority Notice PH11(T)/2023

Barge *SMC 9* and support vessels *Hedland 5* and *Hedland 6* are conducting works to install new light beacons.

The new light beacons will be installed as follows:

<i>Position</i>	<i>Remarks</i>
20° 17'.90 S 118° 35'.25 E	port lateral light beacon, <i>Fl.R.5s</i>
20° 17'.90 S 118° 35'.27 E	starboard lateral light beacon, <i>Fl.G.5s</i>
20° 18'.01 S 118° 35'.21 E	port lateral light beacon, <i>Fl.R.5s</i>
20° 18'.01 S 118° 35'.23 E	starboard lateral light beacon, <i>Fl.G.5s</i>
20° 18'.16 S 118° 35'.20 E	port lateral light beacon, <i>Fl.R.5s</i>
20° 18'.16 S 118° 35'.21 E	starboard lateral light beacon, <i>Fl.G.5s</i>
20° 18'.22 S 118° 35'.21 E	port lateral light beacon, <i>Fl.R.5s</i>
20° 18'.20 S 118° 35'.22 E	starboard lateral light beacon, <i>Fl.G.5s</i>
20° 18'.27 S 118° 35'.25 E	port lateral light beacon, <i>Fl.R.5s</i>
20° 18'.24 S 118° 35'.28 E	starboard lateral light beacon, <i>Fl.G.5s</i>
20° 18'.33 S 118° 35'.32 E	port lateral light beacon, <i>Fl.R.5s</i>

The vessels will display appropriate lights and shapes.

Mariners are advised to navigate with caution in the area.

Chart temporarily affected - Aus 53

623(T)/2023 AUSTRALIA - WESTERN AUSTRALIA - Carnarvon - Gascoyne River - Teggs Channel - Dredging operations

Department of Transport WA Notice 5747/2023

The dredge, *Ironheart*, is conducting dredging operations in Teggs Channel and the entrance to Gascoyne River.

A floating and submerged pipeline, marked by special light buoys, is connected to the dredge.

The dredge has deployed anchors marked by special light buoys.

The dredge will display appropriate lights and shapes and will monitor VHF Ch 16 and VHF Ch 74.

Mariners are required to contact the dredge before passing and to pass close to the dredge, rather than out near the anchors, while dredging is in progress.

A mooring marked by a special light buoy exists in position 24° 54'.02 S 113° 39'.09 E.

Temporary anchors marked by special light buoys exist in the vicinity of position 24° 53'.52 S 113° 37'.98 E.

Mariners are advised to navigate with caution in the area and keep well clear.

Chart temporarily affected - Aus 73

625(T)/2023 AUSTRALIA - WESTERN AUSTRALIA - Kalbarri - Scientific instrument

Department of Transport WA Notice 5748(T)/2023

A subsurface scientific instrument, 0.66m above the seabed, exists in position 27° 24'.70 S 114° 02'.79 E.

Chart temporarily affected - Aus 332

627(T)/2023 AUSTRALIA - WESTERN AUSTRALIA - Lagrange Bay - Scientific instruments

Department of Transport WA Notice 5749(T)/2023

Subsurface scientific instruments exist in the following positions:

18° 35'.12 S 121° 44'.06 E
18° 35'.54 S 121° 44'.98 E
18° 35'.85 S 121° 45'.81 E
18° 36'.01 S 121° 43'.89 E
18° 36'.43 S 121° 46'.98 E
18° 36'.48 S 121° 47'.17 E
18° 36'.49 S 121° 42'.92 E
18° 36'.57 S 121° 46'.91 E
18° 36'.59 S 121° 45'.45 E
18° 37'.00 S 121° 44'.32 E
18° 37'.00 S 121° 46'.69 E
18° 37'.05 S 121° 46'.95 E
18° 37'.20 S 121° 46'.31 E
18° 37'.25 S 121° 47'.09 E
18° 37'.66 S 121° 45'.68 E
18° 37'.81 S 121° 43'.16 E
18° 38'.06 S 121° 44'.56 E
18° 38'.53 S 121° 46'.45 E
18° 38'.72 S 121° 45'.65 E
18° 38'.83 S 121° 46'.83 E
18° 39'.12 S 121° 44'.44 E
18° 39'.15 S 121° 43'.16 E
18° 39'.47 S 121° 46'.19 E
18° 39'.76 S 121° 45'.30 E.

Mariners are advised to navigate with caution in the area.

Chart temporarily affected - Aus 324

628(T)/2023 AUSTRALIA - WESTERN AUSTRALIA - Ningaloo Reef - Scientific instrument

Department of Transport WA Notice 5739(T)/2023

A special light buoy, *Fl.Y.2·5s*, exists in position 23° 08'.58 S 113° 44'.24 E.

Chart temporarily affected - Aus 746

629(T)/2023 AUSTRALIA - WESTERN AUSTRALIA - South Fremantle - Scientific instruments westwards
Department of Transport WA Notice 5703(T)/2023

Subsurface scientific instruments, 1.2m below the surface, exist in positions 32° 04'.72 S 115° 44'.51 E and 32° 04'.93 S 115° 44'.02 E.

Mariners are advised to navigate with caution in the area.

Chart temporarily affected - Aus 117

630(T)/2023 AUSTRALIA - WESTERN AUSTRALIA - Torbay to King George Sound - Scientific instruments
Department of Transport WA Notice 5742/2023

Scientific instruments marked by special light buoys, *Fl.Y.3s*, exist in the following positions:

35° 04'.92 S 117° 49'.18 E

35° 05'.38 S 117° 57'.75 E

35° 05'.45 S 117° 57'.76 E.

Chart temporarily affected - Aus 118

631(T)/2023 AUSTRALIA - WESTERN AUSTRALIA - Wilson Head - Scientific instrument
Department of Transport WA Notice 5757(T)/2023

A special light buoy, *Fl.Y.2·5s*, exists in position 35° 02'.93 S 117° 21'.82 E.

Chart temporarily affected - Aus 336

679(T)/2023 AUSTRALIA - WESTERN AUSTRALIA - Browse Island - Accommodation vessel northwestwards
Australian Maritime Safety Authority

Vessel *Floatel Triumph* is moored in position 13° 47'.0 S 123° 13'.0 E.

Chart temporarily affected - Aus 319 - Aus 320

680(T)/2023 AUSTRALIA - WESTERN AUSTRALIA - Dampier - Holden Point - Light buoy removed
Pilbara Ports Authority Notice D18(T)/2023

The special light buoy, *Fl.Y.3s P18* (20° 35'.90 S 116° 45'.01 E), has been temporarily removed.

Chart temporarily affected - Aus 59

718(T)/2023 AUSTRALIA - WESTERN AUSTRALIA - Barrow Island - Subsea operations northwestwards
DOF Management Australia Pty Ltd

MV *Skandi Singapore* is conducting subsea operations in the vicinity of position 20° 29'.50 S 114° 53'.83 E.

Mariners are advised to navigate with caution in the area. 1M clearance requested.

Chart temporarily affected - Aus 328

719(T)/2023 AUSTRALIA - WESTERN AUSTRALIA - Dampier - Holden Point - Survey operations; dredging operations; pipe laying operations

Former Notice - 454(T)/2023 is cancelled

Woodside Energy Ltd

Vessels *Gateway*, *Baldur*, *Seapiper*, *Saipem Endeavour* and support vessels are conducting survey, dredging and pipe laying operations between the following positions:

20° 36'.29 S 116° 45'.46 E

20° 35'.47 S 116° 44'.79 E

20° 35'.01 S 116° 44'.73 E

20° 33'.06 S 116° 45'.63 E
20° 31'.85 S 116° 45'.74 E
20° 30'.49 S 116° 46'.32 E
20° 26'.58 S 116° 46'.49 E
20° 24'.31 S 116° 45'.86 E
20° 20'.61 S 116° 42'.12 E.

Mariners are advised to navigate with caution in the area.

Chart temporarily affected - Aus 57 - Aus 59 - Aus 327

721(T)/2023 AUSTRALIA - WESTERN AUSTRALIA - Thevenard Island - Platform unlit southwards
Pilbara Ports Authority Notice A12(T)/2023

The *Cowle* platform, *Mo(U)10s* (21° 31'.33 S 114° 58'.16 E), is unlit.

Chart temporarily affected - Aus 64 - Aus 328 - Aus 743 - Aus 744 - Aus 4723 (INT 723)

767(T)/2023 AUSTRALIA - WESTERN AUSTRALIA - Carnarvon - Obstructions
Department of Transport WA Notice 5769/2023

Pylons, 30cm below the surface, exist in the vicinity of position 24° 54'.35 S 113° 38'.61 E.

Mariners are advised to navigate with caution in the area.

Chart temporarily affected - Aus 73

769(T)/2023 AUSTRALIA - WESTERN AUSTRALIA - Geographe Bay - Scientific instruments
Department of Transport WA Notice 5797/2023

Scientific instruments marked by special spherical light buoys, *Fl.Y.1-5s*, exist in the following positions:

33° 37'.33 S 115° 23'.86 E
33° 37'.34 S 115° 23'.67 E
33° 37'.77 S 115° 22'.47 E
33° 37'.78 S 115° 22'.52 E
33° 36'.63 S 115° 24'.91 E
33° 36'.64 S 115° 24'.92 E.

Chart temporarily affected - Aus 116 - Aus 755

770(T)/2023 AUSTRALIA - WESTERN AUSTRALIA - Geraldton - Harbour works
Mid West Ports Notice 9/2023

Construction works are in progress in the vicinity of position 28° 46'.40 S 114° 36'.19 E.

Special light buoys exist in the following positions:

28° 46'.37 S 114° 36'.19 E
28° 46'.38 S 114° 36'.20 E
28° 46'.43 S 114° 36'.21 E
28° 46'.44 S 114° 36'.19 E.

Mariners are advised to navigate with caution in the area.

Chart temporarily affected - Aus 81

773(T)/2023 AUSTRALIA - WESTERN AUSTRALIA - Port Geographe Marina - Dredging operations
Department of Transport WA Notice 5800(T)/2023

The dredge *Mudlark I* is conducting dredging operations at the entrance to the marina (33° 37'.74 S 115° 23'.38 E).

A floating and submerged pipeline exists from the dredge and is marked by special light buoys.

The dredge will display appropriate lights and shapes and will monitor VHF Ch 16, Marine 27 and MHz Ch 88.

Mariners are advised to contact the dredge if they are unsure where to safely pass.

Spoil will be deposited in the spoil ground (33° 37'.42 S 115° 23'.72 E) which is marked by special light buoys in the following positions:

33° 37'.45 S 115° 23'.50 E
33° 37'.37 S 115° 23'.67 E
33° 37'.37 S 115° 23'.88 E
33° 37'.46 S 115° 23'.88 E
33° 37'.46 S 115° 23'.61 E
33° 37'.49 S 115° 23'.56 E.

Mariners are advised to navigate with caution in the area.

Chart temporarily affected - Aus 116

774(T)/2023 AUSTRALIA - WESTERN AUSTRALIA - Rottnest Island - Thomson Bay - Rock

Department of Transport WA Notice 5796/2023

A rock outcrop has been reported in position 31° 59'.82 S 115° 32'.64 E.

Mariners are advised to navigate with caution in the area.

Chart temporarily affected - Aus 112

820(T)/2023 AUSTRALIA - WESTERN AUSTRALIA - Browse Island - Light altered northwestwards

Australian Maritime Safety Authority Auscoast Warning 213/2023

The light, *Mo(U)15s 15M* (13° 56'.37 S 123° 17'.87 E), has been temporarily altered to *Mo(U)15s 10M*.

Chart temporarily affected - Aus 319 - Aus 320 - Aus 4603 (INT 603) - Aus 4722 (INT 722)

821(T)/2023 AUSTRALIA - WESTERN AUSTRALIA - Cape Naturaliste - Scientific instrument northwestwards

Geographe Marine Research

A subsurface scientific instrument, 4m above the seabed, exists in position 33° 19'.35 S 114° 46'.91 E.

Chart temporarily affected - Aus 335

822(T)/2023 AUSTRALIA - WESTERN AUSTRALIA - Dampier - Mermaid Sound - Scientific instrument

Pilbara Ports Authority Notice D23(T)/2023

A special light buoy, *Fl(5)Y.20s*, exists in position 20° 30'.81 S 116° 45'.56 E.

Chart temporarily affected - Aus 57

859(T)/2023 AUSTRALIA - WESTERN AUSTRALIA - Browse Island - Subsea operations

McDermott Australia

Vessel *LV108* is conducting subsea operations in an area bounded by the following positions:

14° 00'.0 S 123° 05'.0 E
14° 00'.0 S 123° 20'.0 E
13° 44'.0 S 123° 20'.0 E
13° 44'.0 S 123° 05'.0 E.

Mariners are advised to navigate with caution in the area. 2.5M clearance requested.

Chart temporarily affected - Aus 319 - Aus 320 - Aus 322

864(T)/2023 AUSTRALIA - WESTERN AUSTRALIA - Thevenard Island - Scientific instrument northwestwards

Fugro

A special light buoy, *Fl(5)Y.20s*, exists in position 21° 11'.58 S 114° 40'.08 E.

Chart temporarily affected - Aus 328 - Aus 743 - Aus 744

866(T)/2023 AUSTRALIA - WESTERN AUSTRALIA - Thevenard Island to Muiron Islands - Removal works northwestwards

Woodside Energy Ltd , Technip FMC

Vessel *Aegir* and support vessels are conducting works to remove the Nganhurra riser turret mooring (RTM) (21° 28'.89 S 114° 00'.49 E) and the Griffin RTM (21° 13'.40 S 114° 38'.70 E).

Lifting of the Nganhurra RTM onto a barge may occur at the location of the RTM or in an area bounded by the following positions:

21° 31'.22 S 114° 25'.54 E
21° 32'.01 S 114° 32'.89 E
21° 29'.94 S 114° 40'.09 E
21° 24'.92 S 114° 40'.08 E.

A 500m exclusion zone exists around the vessel.

Chart temporarily affected - Aus 328 - Aus 329 - Aus 743 - Aus 744

895(T)/2023 AUSTRALIA - WESTERN AUSTRALIA - Cape Leveque - Survey operations

MMA Offshore

Survey operations are in progress in an area bounded by the following positions:

16° 40'.12 S 122° 30'.96 E
16° 35'.58 S 122° 29'.61 E
16° 20'.05 S 122° 45'.00 E
16° 13'.78 S 122° 45'.24 E
16° 13'.78 S 122° 53'.34 E
16° 16'.24 S 122° 58'.46 E
16° 20'.05 S 122° 54'.21 E
16° 19'.61 S 123° 03'.04 E
16° 31'.48 S 122° 49'.34 E
16° 30'.76 S 122° 41'.09 E.

Tide gauges exist on the seabed in the area.

Mariners are advised to navigate with caution in the area.

Chart temporarily affected - Aus 323 - Aus 732 - Aus 733

896(T)/2023 AUSTRALIA - WESTERN AUSTRALIA - Cartier Island - Drill rig southwestwards

MODU *Noble Deliverer*

Drill rig *Noble Deliverer* is conducting drilling operations in position 12° 56'.67 S 123° 12'.61 E.

Chart temporarily affected - Aus 319

897(T)/2023 AUSTRALIA - WESTERN AUSTRALIA - Double Island - Platform unlit eastwards

Former Notice - 575(T)/2023 is cancelled

Santos

The *Victoria* platform, *Mo(U)Y.15s* (20° 44'.37 S 115° 34'.30 E), is unlit.

A special light buoy, *Mo(U)Y.15s*, exists in position 20° 44'.45 S 115° 34'.43 E.

Chart temporarily affected - Aus 65 - Aus 327 - Aus 742

898(T)/2023 AUSTRALIA - WESTERN AUSTRALIA - Eugene McDermott Shoal to North West Cape - Scientific instruments

JASCO Applied Sciences (Australia)

Subsurface scientific instruments exist on the seabed in the following positions:

12° 57'.80 S 124° 40'.41 E
12° 57'.96 S 124° 12'.74 E
12° 58'.04 S 123° 42'.31 E
13° 59'.22 S 121° 46'.61 E
14° 02'.02 S 122° 01'.06 E
21° 38'.45 S 113° 53'.94 E.

Mariners are advised to stay well clear of the instruments and to navigate with caution in the area.

Chart temporarily affected - Aus 319 - Aus 322 - Aus 328 - Aus 329

900(T)/2023 AUSTRALIA - WESTERN AUSTRALIA - Lowendal Islands - Light altered
Santos

The light, *Fl.3s* (20° 38'.04 S 115° 34'.34 E), has been temporarily altered to *Fl.Y.2·5s*.

Chart temporarily affected - Aus 65 - Aus 742

SOUTH AUSTRALIA

436(T)/2017 AUSTRALIA - SOUTH AUSTRALIA - Fleurieu Peninsula - Haycock Point - Hulk; prohibited area

Former Notice - 619(T)/2016 is cancelled

Department of Planning, Transport and Infrastructure SA Notices 37/2014, 8/2017

A lit hulk, *Fl. Y. 4s*, exists in position 35° 25'.23 S 138° 18'.33 E.

A prohibited area, marked by special buoys, exists in an area bounded by the following positions:

35° 25'.15 S 138° 18'.28 E

35° 25'.17 S 138° 18'.42 E

35° 25'.32 S 138° 18'.39 E

35° 25'.29 S 138° 18'.26 E.

Chart temporarily affected - Aus 485 - Aus 780

81(T)/2021 AUSTRALIA - SOUTH AUSTRALIA - Gulf St Vincent - Rogues Point - Artificial reef

Department of Planning, Transport and Infrastructure SA Notice 9/2017

An artificial reef is being developed in an area bounded by the following positions:

34° 30'.63 S 137° 53'.95 E

34° 30'.63 S 137° 54'.12 E

34° 30'.47 S 137° 54'.13 E

34° 30'.47 S 137° 53'.95 E.

A lit raft exists in position 34° 30'.59 S 137° 53'.99 E.

Chart temporarily affected - Aus 781

291(T)/2021 AUSTRALIA - SOUTH AUSTRALIA - Port Adelaide - Shoaling

Department for Transport, Energy and Infrastructure SA Notice 38/2007

Silting has resulted in width restrictions being imposed in the main channel of the Port Adelaide River between No 40 beacon (34° 47'.86 S 138° 30'.79 E) and No 41 beacon (34° 48'.52 S 138° 30'.77 E).

Mariners should avoid the western side of the main channel and navigate with caution in this part of the River as the available navigable channel is now only 90 metres wide measured from the eastern edge.

Mariners intending to transit this section should contact the Manager Marine Operations, Flinders Ports Pty Ltd on (08) 8447 0622 to confirm maximum widths.

Chart temporarily affected - Aus 130

492(P)/2021 AUSTRALIA - SOUTH AUSTRALIA - Masillon Island to Rocky Island - Islands out of position

Australian Hydrographic Office

The following islands are charted out of position:

	<i>Charted position</i>	<i>Actual position</i>
Masillon Island	32° 33'.57 S 133° 17'.46 E	32° 33'.82 S 133° 17'.30 E
Fenelon Island	32° 34'.80 S 133° 17'.18 E	32° 35'.08 S 133° 16'.94 E
Hart Island	32° 38'.49 S 133° 09'.40 E	32° 38'.68 S 133° 08'.26 E
Cannan Reefs	32° 38'.37 S 133° 14'.92 E	32° 38'.78 S 133° 14'.42 E
Rocky Island	34° 48'.71 S 134° 42'.93 E	34° 48'.71 S 134° 43'.45 E.

Mariners are advised to navigate with caution in the area.

Charts will updated in due course.

Chart which will be affected - Aus 341 - Aus 342 - Aus 343

803(T)/2021 AUSTRALIA - SOUTH AUSTRALIA - Gulf St Vincent - Investigator Strait to Adelaide - Scientific instruments

Former Notice - 771(T)/2021 is cancelled

Department for Infrastructure and Transport SA Notice 25(T)/2021

Special light buoys, *Fl. Y. 2s*, exist in the following positions:

34° 51'.30 S 138° 21'.00 E

35° 01'.50 S 138° 27'.00 E.

An unlit special buoy exists in position 35° 34'.20 S 136° 55'.53 E.

Chart temporarily affected - Aus 130 - Aus 780 - Aus 781

587(T)/2022 AUSTRALIA - SOUTH AUSTRALIA - Wallaroo - Point Hughes - Harbour works

Department for Infrastructure and Transport SA Notice 18(T)/2022

Works associated with the construction of a new breakwater are in progress in the vicinity of position 33° 55'.88 S 137° 36'.29 E.

The works area is marked by special light buoys, *Fl. Y. 4s*.

Mariners are advised to navigate with caution in the area.

Chart temporarily affected - Aus 777

909(T)/2022 AUSTRALIA - SOUTH AUSTRALIA - Thevenard - Light altered

Department for Infrastructure and Transport SA Notice 40(T)/2022

The light, Q (32° 08'.96 S 133° 38'.36 E), has been temporarily altered to *F* and the white sector removed.

Chart temporarily affected - Aus 120

998(T)/2022 AUSTRALIA - SOUTH AUSTRALIA - Two Hummock Point to Point Riley - Scientific instruments

Department for Infrastructure and Transport SA Notice 41(T)/2022

Scientific instruments exist on the seabed in the following positions:

32° 46'.43 S 137° 50'.38 E

33° 14'.56 S 137° 30'.23 E

33° 44'.84 S 137° 12'.20 E

33° 53'.17 S 137° 29'.01 E.

Mariners are advised to navigate with caution in the area

Chart temporarily affected - Aus 777 - Aus 778

42(T)/2023 AUSTRALIA - SOUTH AUSTRALIA - Spencer Gulf - Louth Bay to Arno Bay - Scientific instruments

Department for Infrastructure and Transport SA Notice 54(T)/2022

Special light buoys, *Fl. Y. 2·5s*, exist in the following positions:

33° 56'.49 S 136° 37'.28 E

34° 01'.73 S 136° 36'.23 E

34° 34'.23 S 135° 59'.81 E

34° 34'.45 S 136° 07'.35 E.

Chart temporarily affected - Aus 776 - Aus 777

540(T)/2023 AUSTRALIA - SOUTH AUSTRALIA - Port Adelaide - Light beacon destroyed

Department for Infrastructure and Transport SA Notice 30(T)/2023, 31(T)/2023

The light beacon, *Fl. R. 2s No4* (34° 47'.26 S 138° 25'.23 E), has been destroyed; a port lateral virtual AIS and a port lateral light buoy, *Fl. R. 2s*, exist in situ.

Chart temporarily affected - Aus 130

584(T)/2023 AUSTRALIA - SOUTH AUSTRALIA - Kangaroo Island - Nepean Bay - Light beacon unlit

Department for Infrastructure and Transport SA Notice 34(T)/2023

The east cardinal light beacon, *Q(3)10s 3M* (35° 38'.42 S 137° 41'.69 E), is unlit.

Chart temporarily affected - Aus 780

632(T)/2023 AUSTRALIA - SOUTH AUSTRALIA - Port Giles - Light beacon unlit eastwards

Department for Infrastructure and Transport SA Notice 38(T)/2023

The light beacon, *Fl.WR.4s 10/6M* (35° 01'.01 S 137° 52'.12 E), is unlit.

Chart temporarily affected - Aus 485 - Aus 781

723(T)/2023 AUSTRALIA - SOUTH AUSTRALIA - Lucky Bay - Dredging operations

Department for Infrastructure and Transport SA Notice 45(T)/2023

Dredging operations are in progress in an area bounded by the following positions:

33° 42'.81 S 137° 02'.19 E

33° 43'.30 S 137° 02'.67 E

33° 42'.81 S 137° 02'.83 E

33° 42'.51 S 137° 02'.33 E.

A submerged and floating pipeline exists in the area.

The dredge will display appropriate lights and shapes and will monitor VHF Ch 16 and Ch 1.

Mariners are advised to navigate with caution in the area.

Chart temporarily affected - Aus 777

724(T)/2023 AUSTRALIA - SOUTH AUSTRALIA - Port Lincoln - Boston Bay - Light beacon destroyed

Department for Infrastructure and Transport SA Notice 44(T)/2023

The starboard lateral light beacon, *Fl.G.2s No3* (34° 41'.75 S 135° 52'.70 E), has been destroyed.

Mariners are advised to navigate with caution in the area.

Chart temporarily affected - Aus 134

VICTORIA

379(T)/2018 AUSTRALIA - VICTORIA - Port Phillip - Williamstown - Light beacon unlit

Parks Victoria Notice 149(T)/2018

The special light beacon, *Fl. Y. 3s* (37° 51'.84 S 144° 52'.08 E) is unlit.

Chart temporarily affected - Aus 143 - Aus 155

1292(T)/2019 AUSTRALIA - VICTORIA - Port Phillip - Sandringham - Light beacon unlit

Former Notice - 1170(T)/2019 is cancelled

Parks Victoria Notice 121(T)/2019, 285(T)/2019

The starboard lateral light beacon, *Fl(2)G. 5s 5m 4M* (37° 56'.48 S 144° 59'.56 E), is unlit; a starboard lateral light buoy, *Fl(2)G. 5s*, exists in position 37° 56'.51 S 144° 59'.53 E.

Chart temporarily affected - Aus 143 - Aus 155

42(T)/2020 AUSTRALIA - VICTORIA - Port Phillip - Brighton - Obstruction

Parks Victoria Notice 296(T)/2018

An obstruction marked by a buoy exists in position 37° 54'.44 S 144° 58'.95 E.

Chart temporarily affected - Aus 155

219(T)/2020 AUSTRALIA - VICTORIA - Portland Bay - Scientific instruments

Maritime Safety Victoria Notice 79(T)/2020

Subsurface scientific instruments exist 5m below the surface in the following positions:

38° 16'.05 S 141° 50'.82 E

38° 16'.10 S 141° 51'.17 E

38° 16'.14 S 141° 51'.56 E.

Chart temporarily affected - Aus 140 - Aus 349

895(P)/2020 AUSTRALIA - VICTORIA - Port Welshpool to McLoughlins Entrance - Shoaling

Gippsland Ports

Latest survey shows shoaling and channel realignment in the following channels:

Middle Ground Channel (38° 42'.5 S 146° 31'.5 E)

Snake Channel (38° 44'.4 S 146° 37'.0 E)

Midge Channel (38° 41'.8 S 146° 39'.9 E)

Port Albert Channel (38° 41'.5 S 146° 41'.2 E)

Kate Kearney Channel (38° 41'.7 S 146° 43'.0 E)

Kate Kearney Entrance (38° 41'.5 S 146° 45'.1 E)

Tarra Channel (38° 40'.8 S 146° 45'.7 E)

Boat Harbour Channel (38° 40'.4 S 146° 48'.4 E)

Pelican Channel (38° 39'.3 S 146° 48'.7 E)

Manns Beach Channel (38° 38'.8 S 146° 47'.4 E)

Manns Channel (38° 40'.5 S 146° 49'.6 E)

Oyster Bed Channel (38° 38'.5 S 146° 51'.2 E)

McLoughlins Entrance (38° 37'.8 S 146° 53'.0 E).

Mariners are advised to navigate with caution in the area.

Charts will be updated in due course.

Chart which will be affected - Aus 181

350(T)/2021 AUSTRALIA - VICTORIA - Port Phillip - Corio Bay - Scientific instruments

Victorian Regional Channels Authority Notice 93(T)2021

Scientific instruments exist on the seabed in the following positions:

38° 05'.17 S 144° 23'.31 E

38° 05'.35 S 144° 24'.20 E.

Chart temporarily affected - Aus 153 - Aus 157

409(T)/2021 AUSTRALIA - VICTORIA - Port Phillip - Corio Bay - Scientific instrument

Victorian Regional Channels Authority Notice 310(T)/2019

A scientific instrument marked by a special light buoy, *Fl. Y*, exists on the seabed in position 38° 05'.07 S 144° 23'.25 E.

Chart temporarily affected - Aus 157

413(T)/2021 AUSTRALIA - VICTORIA - Port Phillip - Corio Bay - Light buoys; AIS

Victorian Regional Channels Authority Notices 16(T)/2018, 17(T)/2018, 72(T)/2018

Starboard lateral pillar light buoys exist as follows:

<i>Position</i>	<i>Remarks</i>
38° 06'.01 S 144° 22'.92 E	<i>F.Iso.G.3s TB2</i>
38° 06'.65 S 144° 22'.34 E	<i>F.Iso.G.3s TB1</i>

Starboard lateral virtual AIS also exist at the above positions.

Chart temporarily affected - Aus 157

416(T)/2021 AUSTRALIA - VICTORIA - Portland - Shoaling

Port of Portland Notice 56(T)/2021

Shoaling, with least depth 7.3m, extends 90m to the west of the main breakwater (38° 20'.65 S 141° 37'.40 E).

Mariners are advised to navigate with caution in the area.

Chart temporarily affected - Aus 140

493(T)/2021 AUSTRALIA - VICTORIA - Barwon Head - Light buoy withdrawn eastwards

Parks Victoria Notice 166(T)/2020

The special light buoy, *Fl. Y.5s* (38° 17'.95 S 144° 32'.65 E), has been temporarily withdrawn.

Chart temporarily affected - Aus 143

542(T)/2021 AUSTRALIA - VICTORIA - Port Phillip - Sandringham - Dredging operations

Parks Victoria Notice 143(T)/2021

Dredging operations are in progress in the vicinity of position 37° 58'.0 S 145° 00'.2 E.

A dredge and support vessels are on site.

The dredge material will be deposited for beach renourishment along Edward Street Beach (37° 57'.35 S 145° 00'.34 E) and in Half Moon Bay (37° 58'.13 S 145° 00'.64 E).

All hazards to navigation will be marked by appropriate lights and shapes.

Mariners are advised to navigate with caution in the area.

Chart temporarily affected - Aus 143 - Aus 155

618(T)/2021 AUSTRALIA - VICTORIA - Port Phillip - Half Moon Bay - Obstructions

Parks Victoria Notices 215(T), 218(T)/2021

The jetty (37° 58'.09 S 145° 00'.58 E) has been demolished. Shoaling and obstructions may exist in the area north of the jetty.

Mariners are advised to navigate with caution in the area.

Chart temporarily affected - Aus 155

664(T)/2021 AUSTRALIA - VICTORIA - Western Port - Stony Point to Sandy Point - Shoaling

Victorian Regional Channels Authority Notice 199/2019

Shoaling exists in the vicinity of the following positions:

<i>Position</i>	<i>Least depth</i>	<i>Remarks</i>
38°25'.5 S 145° 13'.8 E	13.6m	Extending up to 100m into shipping channel
38°22'.8 S 145° 14'.7 E	13.2m	Extending up to 50m into shipping channel
38°21'.9 S 145° 14'.4 E	13.5m	Extending up to 40m into shipping channel
38°22'.1 S 145° 14'.3 E	13.8m	Extending up to 10m into shipping channel

Mariners are advised to navigate with caution in the area.

Chart temporarily affected - Aus 151**665(T)/2021 AUSTRALIA - VICTORIA - Western Port - Hanns Inlet - Light beacons unlit**

HMAS Cerberus

The light beacons, *Fl.G.8s* (38° 23'.26 S 145° 13'.95 E) and *Fl.R.8s* (38° 23'.30 S 145° 13'.94 E) are unlit.**Chart temporarily affected - Aus 151****859(T)/2021 AUSTRALIA - VICTORIA - Western Port - Crib Point - Exclusion zone**

Maritime Safety Victoria Notice 265(T)/2021

The Ex-HMAS OTAMA (Oberon class submarine) located 800 metres north of Crib Point jetty has been relocated to position 38° 20'.66 S 145° 13'.27 E, with a 200 metre exclusion zone.

A 200 metre exclusion zone remains at its previous location (38° 20'.48 S 145° 13'.45 E).

Mariners are advised to navigate with caution in the area.

Chart temporarily affected - Aus 151**1004(T)/2021 AUSTRALIA - VICTORIA - Port Phillip - Brighton - Light buoy unlit**

Parks Victoria Notice 324(T)/2021

The special light buoy, *Fl(3)Y.10s R2* (37° 54'.55 S 144° 56'.33 E), is unlit.**Chart temporarily affected - Aus 155****1032(T)/2021 AUSTRALIA - VICTORIA - Port Phillip - Chelsea - Beacon destroyed**

Parks Victoria Notice 333(T)/2021

The special beacon (38° 03'.47 S 145° 06'.74 E) has been destroyed.

Chart temporarily affected - Aus 143**1033(T)/2021 AUSTRALIA - VICTORIA - Port Phillip - Beaumaris Bay - Buoy**

Parks Victoria Notice 353(T)/2021

A special buoy exists in position 37° 59'.50 S 145° 03'.56 E.

Chart temporarily affected - Aus 155**81(T)/2022 AUSTRALIA - VICTORIA - Geelong - Survey**

Ports Victoria Notice 025(T)/2022

The jack up barge *JUB II* and support vessel *Taurus (MB 209)* are conducting geotech operations in the vicinity of position 38° 05'.32 S 144° 23'.34 E.

All vessels will display appropriate lights and shapes and will monitor VHF Ch 12/16. A 100 m exclusion zone around barge is requested.

Mariners are advised to navigate with caution in the area.

Chart temporarily affected - Aus 157

90(T)/2022 AUSTRALIA - VICTORIA - Western Port - Exclusion zone
Ports Victoria NTM 015-22

All unauthorised vessels within Port of Hastings waters are prohibited from entering within 100 metres of the vessel *SUI SO FRONTIER* during transit and while berthed.

Mariners are advised to navigate with caution in the area.

Chart temporarily affected - Aus 151 - Aus 801 - Aus 4709 (INT 709)

294(T)/2022 AUSTRALIA - VICTORIA - Port Phillip - Point Wilson - Exclusion zone
Former Notice - 1078(T)/2021 is cancelled
Victorian Regional Channels Authority Notice 239/2020, Parks Victoria Notice 104/2022

A 300m exclusion zone exists outwards from the centreline of Point Wilson Pier (38° 05'.54 S 144° 31'.48 E). It is marked by special light buoys, /so.2s, in the following positions:

38° 05'.51 S 144° 30'.73 E
38° 05'.68 S 144° 31'.32 E
38° 05'.84 S 144° 31'.86 E
38° 05'.89 S 144° 32'.45 E
38° 05'.64 S 144° 32'.48 E
38° 05'.55 S 144° 32'.04 E
38° 05'.38 S 144° 31'.47 E
38° 05'.20 S 144° 30'.93 E.

Only vessels involved in the remediation works are permitted to enter the area.

Mariners are advised to navigate with caution in the area.

Chart temporarily affected - Aus 143 - Aus 157

295(T)/2022 AUSTRALIA - VICTORIA - Port Phillip - Wyndham Marina - Light unlit
Parks Victoria Notice 102(T)/2022

The light, *WRG 3M* (37° 58'.15 S 144° 42'.52 E), is unlit.

Chart temporarily affected - Aus 143 - Aus 155

630(T)/2022 AUSTRALIA - VICTORIA - Cape Duquesne - Scientific instruments
Maritime Safety Victoria Notice 165(T)/2019

Scientific instruments exist as follows:

<i>Position</i>	<i>Remarks</i>
38° 24'.52 S 141° 16'.26 E	25m below surface
38° 24'.24 S 141° 17'.48 E	84m below surface
38° 24'.10 S 141° 18'.04 E	76m below surface
38° 23'.97 S 141° 18'.60 E	69m below surface
38° 23'.83 S 141° 19'.16 E	70m below surface
38° 23'.69 S 141° 19'.73 E	67m below surface
38° 23'.56 S 141° 20'.25 E	67m below surface
38° 23'.44 S 141° 20'.73 E	61m below surface
38° 23'.34 S 141° 21'.18 E	50m below surface
38° 23'.24 S 141° 21'.57 E	30m below surface
38° 23'.15 S 141° 21'.91 E	18m below surface.

Chart temporarily affected - Aus 140 - Aus 348 - Aus 349

747(T)/2022 AUSTRALIA - VICTORIA - Ninety Mile Beach - Traffic separation scheme southwestwards
Australian Maritime Safety Authority

Decommissioning of oil and gas infrastructure will take place at Blackback Prod Well (38° 32'.42 S 148° 33'.24 E), Gudgeon Well (38° 30'.82 S 148° 28'.17 E) and Terakihi Well (38° 30'.27 S 148° 32'.89 E).

New temporary shipping fairways and a separation zone have been established to keep transiting ships away from decommissioning activities. The new shipping fairways and separation zone are bound by the following positions:

Northeast bound lane	38° 36'.941 S	148° 45'.842 E
	38° 39'.507 S	148° 48'.047 E
	38° 44'.600 S	148° 23'.000 E
	38° 42'.034 S	148° 20'.795 E.
Southwest bound lane	38° 33'.407 S	148° 42'.545 E
	38° 35'.750 S	148° 44'.746 E
	38° 40'.844 S	148° 19'.699 E
	38° 38'.500 S	148° 17'.500 E.
Separation zone	38° 35'.750 S	148° 44'.746 E
	38° 36'.941 S	148° 45'.842 E
	38° 42'.034 S	148° 20'.795 E
	38° 40'.844 S	148° 19'.699 E.

The fairways and separation zone come into effect on 1 August 2022 at 0000 UTC and will remain in place until further notice.

Mariners should follow the appropriate traffic lane and navigate in the general direction of traffic flow for that lane. They should, as far as practicable, keep clear of the separation zone.

Due to an increased risk of collision, particularly with vessels that may be restricted in their ability to manoeuvre, mariners should keep a good look out and take early action to avoid collisions.

Note: For e-notice users, please see full edition for map.

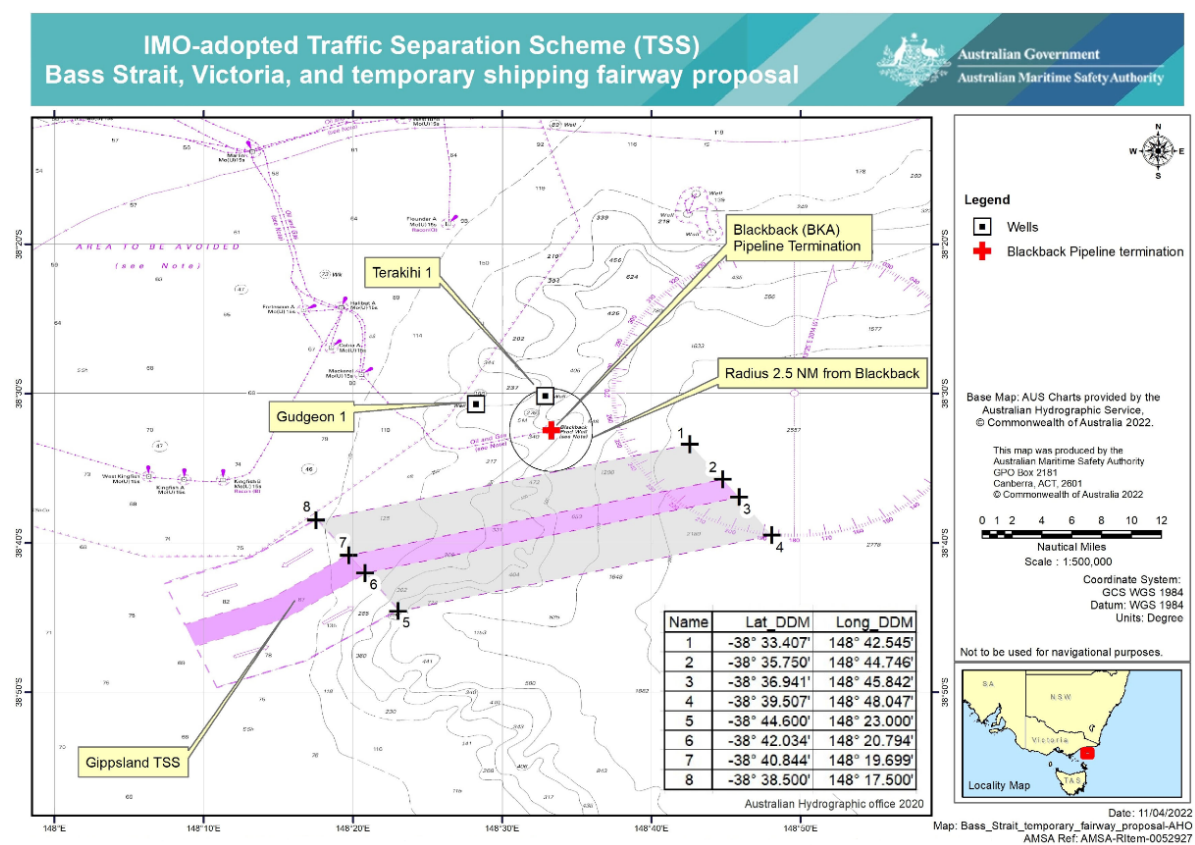


Chart temporarily affected - Aus 357 - Aus 487

754(T)/2022 AUSTRALIA - BASS STRAIT - Racon non operational
Australian Maritime Safety Authority Auscoast Warning 171/2021

The racon at the *Flounder A* platform (38° 18'.65 S 148° 26'.36 E) is non operational.

Chart temporarily affected - Aus 357 - Aus 487

804(T)/2022 AUSTRALIA - VICTORIA - Western Port - Warneet - Jetty closed

Parks Victoria Notice 327/2022

The jetty (38° 13'.66 S 145° 18'.35 E) has been deemed unsafe for public use and has been closed.

Temporary berthing is available at the floating pontoon.

Chart temporarily affected - Aus 151

914(T)/2022 AUSTRALIA - VICTORIA - Port Phillip - Clifton Springs - Artificial reef

Parks Victoria Notice 368(T)/2022

Works to establish an artificial reef are in progress in the vicinity of position 38° 09'.06 S 144° 33'.88 E.

Mariners are advised to navigate with caution in the area.

Chart temporarily affected - Aus 157

1047(T)/2022 AUSTRALIA - VICTORIA - Venus Bay - Scientific instrument

Safe Transport Victoria Notice 417(T)/2022

A special light buoy, *Fl. Y. 2.5s*, exists in position 38° 39'.29 S 145° 42'.25 E.

Chart temporarily affected - Aus 801

112(T)/2023 AUSTRALIA - VICTORIA - Ninety Mile Beach - Virtual AIS southeastwards

Australian Maritime Safety Authority

Special virtual AIS have been established in the Gippsland region to denote an area of oil and gas decommissioning work in the following positions:

38° 23'.54 S 148° 36'.38 E

38° 24'.59 S 148° 30'.93 E

38° 25'.75 S 148° 25'.49 E

38° 29'.10 S 148° 36'.38 E

38° 31'.31 S 148° 25'.49 E

38° 34'.65 S 148° 36'.38 E

38° 35'.76 S 148° 30'.93 E

38° 36'.87 S 148° 25'.49 E.

Transiting ships are requested to keep clear of the area marked by the special virtual AIS.

ANTM 747(T)/2022 refers.

Chart temporarily affected - Aus 357 - Aus 487

160(T)/2023 AUSTRALIA - VICTORIA - Port Fairy Bay - Scientific instrument

Maritime Safety Victoria Notice 127(T)/2019

A special spherical light buoy, *Fl. Y. 2.5s* exists in position 38° 22'.91 S 142° 17'.23 E.

Chart temporarily affected - Aus 349

465(T)/2023 AUSTRALIA - VICTORIA - Port Phillip Bay - Wreck

Ports Victoria Notice 218(T)/2023

A wreck, least depth *11₄m*, exists in position 37° 55'.93 S 144° 56'.86 E.

Chart temporarily affected - Aus 143 - Aus 155

542(T)/2023 AUSTRALIA - VICTORIA - Corner Inlet - Scientific instruments eastwards

Former Notice - 298(T)/2023 is cancelled

RPS Group

Subsurface scientific instruments, 20m below the surface, exist in the following positions:

38° 45'.17 S 147° 05'.60 E
38° 50'.97 S 147° 17'.50 E
38° 55'.82 S 146° 49'.99 E
39° 03'.61 S 147° 39'.07 E
39° 21'.72 S 146° 58'.00 E.

Chart temporarily affected - Aus 357 - Aus 487 - Aus 802

588(T)/2023 AUSTRALIA - VICTORIA - Port Phillip - Rye - Harbour works

Former Notice - 418(T)/2023 is cancelled

Parks Victoria Notice 192(T)/2023, 262(T)/2023

Works to upgrade the pier are in progress in the vicinity of position 38° 21'.96 S 144° 49'.38 E.

The pier will be closed for the duration of the works and only authorised vessels are permitted to enter the works area.

All vessels will display appropriate lights and shapes.

The light, *Fl.R. 12-5s* (38° 21'.94 S 144° 49'.38 E), has been moved to position 38° 21'.96 S 144° 49'.38 E.

Mariners are advised to navigate with caution in the area.

Chart temporarily affected - Aus 143

589(T)/2023 AUSTRALIA - VICTORIA - Port Phillip - South Channel - Light beacon destroyed

Ports Victoria Notice 272(T)/2023

The port lateral light beacon, *Fl.R. 3s* (38° 18'.88 S 144° 48'.86 E), has been destroyed; a port lateral virtual AIS and a port lateral light buoy, *Fl.R. 3s*, exist in situ.

Chart temporarily affected - Aus 143

634(T)/2023 AUSTRALIA - VICTORIA - Golden Beach - Scientific instruments southeastwards

RPS Group

Subsurface scientific instruments, 2m above seabed, exist in the following positions:

38° 23'.73 S 147° 42'.33 E
38° 26'.66 S 147° 27'.32 E
38° 36'.10 S 147° 49'.33 E.

Mariners are advised to navigate with caution in the area.

Chart temporarily affected - Aus 357 - Aus 487

725(T)/2023 AUSTRALIA - VICTORIA - Ninety Mile Beach - Platform unlit eastwards

Australian Maritime Safety Authority Auscoast Warning 185/2023

The *Fortescue A* platform, *Mo(U)15s* (38° 24'.42 S 148° 16'.68 E), is unlit.

Chart temporarily affected - Aus 357 - Aus 487

727(T)/2023 AUSTRALIA - VICTORIA - Port Phillip - Williamstown - Harbour works

Department of Transport WA Notice 1852/2022

On or about 21 August 2023, vessels *SEP FUJI*, *Dumb Barge Gippsland*, *Jack Up Barge 2*, *Steel Punt Barge 92* and support vessels will be conducting works associated with the demolition and removal of the piers in positions 37° 51'.67 S 144° 54'.68 E and 37° 51'.70 S 144° 54'.63 E.

An exclusion zone exists as follows:

<i>Position</i>	<i>Remarks</i>
37° 51'.69 S 144° 54'.59 E	
37° 51'.68 S 144° 54'.60 E	marked by special light buoy, <i>Fl. Y4s</i>
37° 51'.63 S 144° 54'.64 E	marked by special light buoy, <i>Fl. Y4s</i>
37° 51'.58 S 144° 54'.68 E	marked by special light buoy, <i>Fl. Y4s</i>
37° 51'.60 S 144° 54'.72 E	marked by special light buoy, <i>Fl. Y4s</i>
37° 51'.61 S 144° 54'.77 E	marked by special light buoy, <i>Fl. Y4s</i>

37° 51'.62 S 144° 54'.79 E
37° 51'.72 S 144° 54'.68 E.

Only authorised vessels are permitted to enter the area.

Mariners are advised to navigate with caution in the area.

Chart temporarily affected - Aus 155

777(T)/2023 AUSTRALIA - VICTORIA - Port Phillip - Altona - Harbour works

Former Notice - 463(T)/2023 is cancelled

Parks Victoria Notice 205(T)/2023, 336(T)/2023

Works associated with the demolition and reconstruction of the jetty are in progress.

An exclusion zone, marked by special light buoys, exists in an area bounded by the coast and the following positions:

37° 52'.25 S 144° 49'.76 E
37° 52'.32 S 144° 49'.72 E
37° 52'.39 S 144° 49'.70 E
37° 52'.46 S 144° 49'.76 E
37° 52'.45 S 144° 49'.86 E
37° 52'.40 S 144° 49'.89 E
37° 52'.33 S 144° 49'.88 E
37° 52'.25 S 144° 49'.84 E.

All hazards to navigation will display appropriate lights and shapes.

The light, *Fl.G.5s 6m 5M* (37° 52'.41 S 144° 49.81 E), has been temporarily removed.

Mariners are advised to navigate with caution in the area.

Chart temporarily affected - Aus 143 - Aus 155

832(T)/2023 AUSTRALIA - VICTORIA - Phillip Island - Research operations southwards

Phillip Island Nature Parks

Unmanned surface vehicle (USV), *SailBuoy*, is conducting research operations in an area bounded by the following positions:

38° 22'.87 S 144° 29'.62 E
39° 05'.74 S 143° 47'.33 E
39° 29'.64 S 144° 17'.72 E
39° 41'.70 S 145° 32'.60 E
39° 41'.22 S 146° 02'.35 E
39° 27'.36 S 146° 07'.34 E
38° 57'.48 S 145° 56'.99 E
38° 39'.43 S 145° 43'.80 E
38° 31'.15 S 145° 17'.01 E
38° 30'.85 S 144° 55'.17 E
38° 22'.80 S 144° 43'.20 E.

The USV is white and lit with a white light.

Mariners are advised to navigate with caution in the area.

Chart temporarily affected - Aus 143 - Aus 151 - Aus 349 - Aus 487 - Aus 801 - Aus 802

834(T)/2023 AUSTRALIA - VICTORIA - Port Phillip - Scientific instruments

Former Notice - 82(T)/2023 is cancelled

Ports Victoria Notice 365(T)/2023

Special light buoys, *Fl.Y.2·5s*, exist in the following positions:

37° 58'.72 S 144° 59'.73 E
37° 59'.10 S 144° 46'.51 E
38° 03'.81 S 144° 52'.01 E
38° 08'.16 S 144° 45'.18 E
38° 09'.73 S 145° 03'.26 E
38° 18'.09 S 144° 52'.36 E.

Chart temporarily affected - Aus 143 - Aus 155 - Aus 157

871(T)/2023 AUSTRALIA - VICTORIA - Port Phillip - Mornington - Light beacon removed

Former Notice - 835(T)/2023 is cancelled

Parks Victoria Notice 427(T)/2021, 376/2023

The west cardinal light beacon, *VQ(9)10s* (38° 13'.42 S 145° 01'.58 E), has been removed; a west cardinal light buoy, *VQ(9)10s*, exists in situ.

Chart temporarily affected - Aus 143

873(T)/2023 AUSTRALIA - VICTORIA - Port Phillip - Police Point - Buoy off station

Parks Victoria Notice 372(T)/2023

The special buoy (38° 18'.91 S 144° 42'.37 E) is off station.

Chart temporarily affected - Aus 144

905(T)/2023 AUSTRALIA - VICTORIA - Cape Conran - Subsea operations southwards

Former Notice - 860(T)/2023 is cancelled

Cooper Energy

Vessel *Helix Q7000* and support vessels *Pacific Gannet* and *MMA Vigilant* are conducting subsea operations associated with the decommissioning of the wells Manta (38° 16'.65 S 148° 42'.98 E), Basker (38° 17'.98 S 148° 42'.42 E) and Basker 6 (38° 19'.22 S 148° 43'.97 E).

Vessel *MMA Vigilant* and a ROV will be conducting inspection and maintenance operations of the wells Baleen (38° 00'.26 S 148° 26'.65 E) and Patricia (38° 01'.57 S 148° 27'.04 E) opportunistically during the decommissioning operations.

Mariners are advised to navigate with caution in the area. 0.27M clearance requested.

Chart temporarily affected - Aus 357 - Aus 487

907(T)/2023 AUSTRALIA - VICTORIA - Port Phillip - West Channel - Light beacon maintenance works

Parks Victoria Notice 400(T)/2023

Vessels *Dangerfield*, *Matilda Mae* and *Taylia-Rose* are conducting maintenance works on the following light beacons:

<i>Position</i>	<i>Remarks</i>
38° 15'.62 S 144° 42'.42 E	light beacon, <i>Fl(2)R.4s</i>
38° 15'.97 S 144° 42'.64 E	light beacon, <i>Fl(2)G.4s 6m No3.</i>

A 100m exclusion zone with no wake exists around each light beacon during the works.

Mariners are advised to navigate with caution in the area with minimal wash.

Chart temporarily affected - Aus 143 - Aus 144

909(T)/2023 AUSTRALIA - VICTORIA - Port Phillip - Port Melbourne Channel - Light beacon destroyed

Former Notice - 776(T)/2023 is cancelled

Ports Victoria Notice 411(T)/2023

The port lateral light beacon, *Fl(2)R.4s No8* (37° 53'.86 S 144° 55'.58 E), has been destroyed; a virtual AIS exists in situ.

A port lateral light buoy, *Fl(2)R.4s*, exists in position 37° 53'.83 S 144° 55'.59 E.

Mariners are advised to navigate with caution in the area.

Chart temporarily affected - Aus 155

910(T)/2023 AUSTRALIA - VICTORIA - Port Phillip - Point Lonsdale - Wreck

Ports Victoria Notice 405(T)/2023

A wreck marked by a virtual buoy, *TB7*, exists in position 38° 17'.78 S 144° 37'.04 E.

A 100m exclusion zone exists around the wreck.

Marines are advised to navigate with caution in the area.

Chart temporarily affected - Aus 144

TASMANIA

627(T)/2016 AUSTRALIA - TASMANIA - Pipe Clay Head to Pitt Water - Scientific instruments

Former Notice - 309(T)/2014 is cancelled

University of Tasmania

Subsurface scientific instruments exist in the following positions:

42° 48'.25 S 147° 29'.91 E
42° 48'.29 S 147° 31'.42 E
42° 48'.43 S 147° 30'.02 E
42° 49'.18 S 147° 34'.71 E
42° 50'.70 S 147° 33'.57 E
42° 50'.74 S 147° 35'.11 E
42° 50'.90 S 147° 36'.91 E
42° 51'.05 S 147° 32'.08 E
42° 51'.33 S 147° 35'.89 E
42° 51'.69 S 147° 34'.85 E
42° 51'.82 S 147° 30'.92 E
42° 51'.82 S 147° 33'.36 E
42° 52'.35 S 147° 32'.10 E
42° 52'.70 S 147° 36'.29 E
42° 52'.94 S 147° 34'.16 E
42° 53'.24 S 147° 31'.16 E
42° 53'.79 S 147° 32'.67 E
42° 53'.88 S 147° 37'.33 E
42° 54'.20 S 147° 35'.44 E
42° 54'.37 S 147° 30'.53 E
42° 54'.47 S 147° 40'.80 E
42° 54'.67 S 147° 33'.87 E
42° 54'.92 S 147° 40'.78 E
42° 55'.13 S 147° 31'.80 E
42° 55'.36 S 147° 40'.76 E
42° 55'.81 S 147° 40'.74 E
42° 56'.99 S 147° 39'.68 E
42° 57'.04 S 147° 38'.01 E
42° 57'.15 S 147° 39'.22 E
42° 57'.15 S 147° 37'.41 E
42° 57'.28 S 147° 36'.79 E
42° 57'.40 S 147° 36'.20 E
42° 57'.51 S 147° 35'.59 E
42° 57'.62 S 147° 34'.99 E
42° 57'.73 S 147° 34'.44 E
42° 57'.86 S 147° 33'.85 E
42° 57'.96 S 147° 33'.30 E.

Chart temporarily affected - Aus 171 - Aus 796

263(T)/2018 AUSTRALIA - TASMANIA - Devonport - Shoaling

HydroSurvey Australia

Shoaling exists in the Mersey River between positions 41° 11'.20 S 146° 21'.98 E and 41° 11'.48 S 146° 22'.10 E.

Mariners are advised to navigate with caution in the area.

Chart temporarily affected - Aus 164

183(P)/2020 AUSTRALIA - TASMANIA - North West Bay - Barretta - Infrastructure

A Boon

The marina pontoons have been extended to seaward (43° 02'.95 S 147° 16'.14 E).

Mariners are advised to navigate with caution in the area.

Charts will updated in due course.

Chart which will be affected - Aus 171 - Aus 174

522(T)/2020 AUSTRALIA - TASMANIA - D'Entrecasteaux Channel - Tower Bay - Harbour works; light buoys
Marine and Safety Tasmania Notice M98/2020

Mooring works are in progress, marked by special light buoys as follows:

<i>Position</i>	<i>Remarks</i>
43° 23'.38 S 147° 02'.34 E	<i>Fl. Y. 4s</i>
43° 23'.46 S 147° 02'.27 E	<i>Fl. Y. 4s</i>
43° 23'.36 S 147° 01'.98 E	
43° 23'.28 S 147° 02'.05 E	

Chart temporarily affected - Aus 173

733(T)/2020 AUSTRALIA - TASMANIA - Burnie - Harbour works

Former Notice - 47(T)/2019 is cancelled

Marine and Safety Tasmania Notice M217/2018, Toll Group

Harbour works associated with the extension of the wharf at berth 5 (41° 03'.04 S 145° 54'.70 E) are in progress.

Mariners are advised to navigate with caution in the area.

Chart temporarily affected - Aus 163

1017(T)/2020 AUSTRALIA - TASMANIA - Pitt Water - Wreck

Marine and Safety Tasmania Notice M213/2020

A wreck marked by a special spar buoy exists in position 42° 50'.19 S 147° 36'.58 E.

Mariners are advised to navigate with caution in the area.

Chart temporarily affected - Aus 796

673(T)/2021 AUSTRALIA - TASMANIA - Maria Island - Scientific instruments

Marine and Safety Tasmania

Subsurface scientific instruments exist on the seabed in the following positions:

42° 40'.08 S 147° 58'.04 E
42° 39'.99 S 147° 58'.60 E
42° 39'.91 S 147° 59'.16 E
42° 39'.82 S 147° 59'.72 E
42° 39'.74 S 148° 00'.28 E
42° 39'.08 S 148° 10'.40 E
42° 39'.28 S 148° 10'.92 E
42° 39'.48 S 148° 11'.44 E
42° 39'.68 S 148° 11'.96 E
42° 39'.88 S 148° 12'.49 E
42° 40'.08 S 148° 13'.01 E
42° 40'.28 S 148° 13'.53 E
42° 40'.48 S 148° 14'.05 E
42° 40'.68 S 148° 14'.57 E
42° 40'.88 S 148° 15'.10 E
42° 41'.08 S 148° 15'.62 E
42° 41'.28 S 148° 16'.14 E
42° 41'.48 S 148° 16'.66 E
42° 41'.68 S 148° 17'.18 E
42° 41'.88 S 148° 17'.71 E
42° 42'.08 S 148° 18'.23 E
42° 42'.28 S 148° 18'.75 E
42° 42'.48 S 148° 19'.27 E
42° 42'.68 S 148° 19'.79 E
42° 42'.87 S 148° 20'.32 E
42° 43'.07 S 148° 20'.84 E
42° 43'.26 S 148° 21'.26 E.

Chart temporarily affected - Aus 766 - Aus 797

677(T)/2021 AUSTRALIA - TASMANIA - North West Bay - Mooring area

Marine and Safety Tasmania Notice M106/2021

A mooring area, marked by special light buoys, exists in an area bounded by the following positions:

43° 02'.75 S 147° 17'.91 E
43° 02'.66 S 147° 18'.04 E
43° 02'.74 S 147° 18'.15 E
43° 02'.82 S 147° 18'.00 E.

Mariners are advised to navigate with caution in the area.

Chart temporarily affected - Aus 171

722(T)/2021 AUSTRALIA - TASMANIA - Port Dalrymple - Bell Bay - Harbour works

Marine and Safety Tasmania Notice M207/2021

Remediation works are in progress at Bell Bay Berth 6 (41° 08'.39 S 146° 51'.14 E).

Mariners are advised to navigate with caution in the area.

Chart temporarily affected - Aus 167

916(T)/2022 AUSTRALIA - TASMANIA - Devonport - Virtual AIS

Marine and Safety Tasmania Notice M373(T)/2022

A reduced width of the channel is marked by virtual AIS as follows:

<i>Position</i>	<i>Remarks</i>
41° 10'.43 S 146° 21'.85 E	starboard lateral AIS
41° 10'.45 S 146° 21'.93 E	port lateral AIS
41° 10'.45 S 146° 21'.84 E	starboard lateral AIS
41° 10'.50 S 146° 21'.82 E	starboard lateral AIS
41° 10'.51 S 146° 21'.91 E	port lateral AIS
41° 10'.57 S 146° 21'.89 E	port lateral AIS.

Chart temporarily affected - Aus 164

83(T)/2023 AUSTRALIA - TASMANIA - Devonport - Harbour works

Marine and Safety Tasmania Notice M10(T)/2023

Demolition works are in progress in the vicinity of berth 3E in an area bounded by the coast and the following positions:

41° 11'.30 S 146° 22'.14 E
41° 11'.32 S 146° 22'.09 E
41° 11'.15 S 146° 21'.97 E
41° 11'.11 S 146° 21'.97 E
41° 11'.07 S 146° 21'.99 E
41° 10'.94 S 146° 21'.98 E
41° 10'.94 S 146° 22'.00 E.

Vessels will display appropriate lights and shapes and will monitor VHF Ch 14.

Mariners are advised not to enter the works area unless they are required to utilise the swing basin. These vessels must obtain approval from Devonport VTS prior to arrival and departure.

Chart temporarily affected - Aus 164

167(T)/2023 AUSTRALIA - TASMANIA - King Island - Grassy Harbour - Platform, submarine cable, prohibited area

Marine and Safety Tasmania Notice M19/2021

A lit platform, F, exists in position 40° 03'.97 S 144° 03'.53 E.

A submarine power cable exists between positions 40° 03'.97 S 144° 03'.53 E and 40° 03'.91 S 144° 03'.53 E.

An entry prohibited area, with radius 125m, exists centred on position 40° 03'.97 S 144° 03'.53 E.

Mariners are advised to navigate with caution in the area.

Chart temporarily affected - Aus 179

375(T)/2023 AUSTRALIA - TASMANIA - Devonport - Mersey River - Berth

Marine and Safety Tasmania Notice M175/2023

Three piles exist in the vicinity of position 41° 11'.44 S 146° 22'.01 E for the temporary berth, Devonport Berth 6 West.

Chart temporarily affected - Aus 164

466(T)/2023 AUSTRALIA - TASMANIA - Bruny Island - Cape Connella - Scientific instrument

Marine and Safety Tasmania Notice M213(T)/2023

A special light buoy, *Fl.Y.1-5s*, exists in position 43° 23'.51 S 147° 26'.54 E.

Chart temporarily affected - Aus 173 - Aus 795 - Aus 796

545(T)/2023 AUSTRALIA - TASMANIA - River Derwent - Bowen Bridge - Light unlit

Marine and Safety Tasmania Notice M237(T)/2023

The front leading light, *F.Bu* (42° 49'.18 S 147° 18'.29 E), is unlit.

Chart temporarily affected - Aus 171

638(T)/2023 AUSTRALIA - TASMANIA - Port Arthur - Scientific instruments

Marine and Safety Tasmania Notice M265(T)/2023

Subsurface scientific instruments, 5m below the surface, exist in the following positions:

43° 07'.38 S 147° 51'.83 E
43° 07'.59 S 147° 51'.96 E
43° 07'.71 S 147° 51'.99 E
43° 07'.76 S 147° 51'.99 E
43° 07'.77 S 147° 51'.67 E
43° 07'.86 S 147° 51'.86 E
43° 07'.88 S 147° 51'.80 E
43° 08'.00 S 147° 52'.26 E
43° 08'.00 S 147° 52'.34 E
43° 08'.00 S 147° 52'.49 E
43° 08'.00 S 147° 52'.78 E
43° 08'.12 S 147° 52'.12 E
43° 08'.14 S 147° 52'.12 E
43° 08'.24 S 147° 52'.11 E
43° 08'.46 S 147° 52'.01 E
43° 09'.35 S 147° 52'.28 E
43° 09'.41 S 147° 53'.55 E
43° 10'.37 S 147° 51'.52 E.

Mariners are advised to navigate with caution in the area.

Chart temporarily affected - Aus 171 - Aus 796 - Aus 797

639(T)/2023 AUSTRALIA - TASMANIA - River Derwent - Flowerpot Point - Kelp longlines; light buoys

Former Notice - 513(T)/2023 is cancelled

Marine and Safety Tasmania Notice M214(T)/2023, M266(T)/2023

Subsurface kelp longlines exist in an area, marked by light buoys, bounded by the following positions:

43° 01'.24 S 147° 20'.24 E
43° 01'.24 S 147° 20'.31 E
43° 01'.04 S 147° 20'.31 E
43° 01'.04 S 147° 20'.24 E.

Vessels not directly involved in the research activities are prohibited from entering the area.

Mariners are advised to navigate with caution in the area.

Chart temporarily affected - Aus 171 - Aus 173

730(T)/2023 AUSTRALIA - TASMANIA - Huon River - Deep Bay - Wreck

Former Notice - 856(T)/2022 is cancelled
Marine and Safety Tasmania Notice M286(T)/2023

A stranded wreck exists in position 43° 12'.83 S 147° 06'.40 E.

Mariners are advised to navigate with caution in the area.

Chart temporarily affected - Aus 173 - Aus 795

780(T)/2023 AUSTRALIA - TASMANIA - Perkins Island to Rocky Cape - Scientific instruments
Marine and Safety Tasmania Notice M354(T)/2021

Scientific instruments, 5m below the surface, exist in the following positions:

40° 44'.04 S 145° 09'.79 E
40° 45'.48 S 145° 13'.15 E
40° 48'.18 S 145° 18'.94 E
40° 50'.48 S 145° 26'.32 E.

Chart temporarily affected - Aus 790

784(P)/2023 AUSTRALIA - TASMANIA - Rocky Cape to East Sandy Point - Shoaling
Australian Hydrographic Office

Latest survey indicates shoaler depths than those charted may exist in an area bounded by the high water line and the following positions:

40° 42'.39 S 145° 05'.11 E
40° 45'. 45S 145° 20'.92 E
40° 56'. 19S 145° 49'.10 E
41° 04'. 76S 146° 11'.06 E
41° 06'. 47S 146° 28'.51 E
41° 01'. 97S 146° 42'.97 E
40° 56'. 62S 146° 55'.07 E
40° 39'. 89S 147° 58'.89 E.

Mariners are advised to navigate with caution in the area.

Electronic Navigation Charts (ENCs) have been updated, Paper Charts will be updated in due course.

Chart which will be affected - Aus 163 - Aus 164 - Aus 167 - Aus 487 - Aus 790 - Aus 798 - Aus 800

839(T)/2023 AUSTRALIA - TASMANIA - Ringarooma Bay - Scientific instrument
Marine and Safety Tasmania Notice M327(T)/2023

A scientific instrument marked by an orange buoy exists in position 40° 49'.55 S 147° 54'.70 E.

Chart temporarily affected - Aus 798

876(T)/2023 AUSTRALIA - TASMANIA - Macquarie Harbour - Scientific instruments
Marine and Safety Tasmania Notice M338(T)/2023

Scientific instruments, 10m below the surface, exist in positions 42° 18'.49 S 145° 23'.01 E and 42° 20'.80 S 145° 25'.22 E.

Chart temporarily affected - Aus 177 - Aus 792

912(T)/2023 AUSTRALIA - TASMANIA - Bass Strait - Survey operations
Guardian Geomatics

As part of survey operations, tide gauges marked by special light buoys, *Fl. Y 5s* will be deployed at various locations in an area bounded by

39°58'.375S 147°13'.006E
39°47'.214S 147°00'.193E
39°29'.066S 147°20'.381E
39°32'.594S 147°34'.801E

39°37'.992S 147°44'.483E
39°47'.974S 147°34'.842E
40°00'.111S 147°31'.340E
39°58'.375S 147°13'.006E

Mariners are advised to navigate with caution in the area. 5NM clearance requested.

Chart temporarily affected - Aus 487 - Aus 800 - Aus 802

913(P)/2023 AUSTRALIA - TASMANIA - Furneaux Group - Shoaling; islands out of position

Department of Defence

Latest survey indicates islands may be charted out of position and shoaler depths than those charted may exist in an area bounded by the following positions:

39° 54'.53 S 147° 36'.75 E
40° 18'.96 S 147° 45'.90 E
40° 35'.16 S 148° 04'.79 E
40° 36'.96 S 148° 13'.94 E
40° 32'.46 S 148° 19'.18 E
40° 26'.61 S 148° 13'.19 E
39° 44'.03 S 147° 57'.29 E
39° 35'.49 S 147° 48'.00 E
39° 35'.49 S 147° 33'.31 E.

Mariners are advised to navigate with caution in the area.

Charts will be updated in due course.

Chart which will be affected - Aus 179 - Aus 487 - Aus 798 - Aus 800

PAPUA NEW GUINEA and SOUTH PACIFIC

789(T)/2018 PAPUA NEW GUINEA - Bismarck Sea - Fish aggregating devices

National Maritime Safety Authority PNG Warning 9/2018

17 fish aggregating devices exist in an area bounded by the following positions:

4° 30'.0 S 149° 55'.0 E
4° 40'.0 S 149° 55'.0 E
4° 40'.0 S 150° 45'.0 E
4° 30'.0 S 150° 45'.0 E.

Mariners are advised to navigate with caution.

Chart temporarily affected - Aus 4622 (INT 622)

286(P)/2019 PAPUA NEW GUINEA - Madang Harbour - Shoaling

LADS Flight

Latest survey shows shoaler depths than those charted may exist in an area bounded by the following positions:

05° 04'.51 S 145° 48'.06 E
05° 11'.75 S 145° 47'.82 E
05° 11'.91 S 145° 49'.61 E
05° 10'.14 S 145° 50'.36 E
05° 04'.14 S 145° 48'.99 E.

Mariners are advised to navigate with caution in the area.

Charts will be updated in due course.

Chart which will be affected - PNG 646

346(T)/2019 PAPUA NEW GUINEA - Huon Gulf - Light buoy off station

National Maritime Safety Authority PNG Notice 9(T)/2017

The isolated danger light buoy, Q(2)5s (6° 48'.38 S 146° 58'.28 E), is off station.

Chart temporarily affected - PNG 643

968(P)/2019 PAPUA NEW GUINEA - Duke of York Island - Shoaling

LADS Flight

Latest survey shows shoaler depths than those charted may exist in an area bounded by the following positions:

4° 07'.43 S 152° 28'.17 E
4° 10'.10 S 152° 30'.20 E
4° 11'.35 S 152° 30'.07 E
4° 13'.66 S 152° 28'.38 E
4° 15'.11 S 152° 25'.69 E
4° 13'.13 S 152° 22'.60 E
4° 11'.41 S 152° 23'.70 E
4° 07'.06 S 152° 23'.88 E
4° 06'.29 S 152° 24'.62 E
4° 06'.17 S 152° 25'.41 E.

Mariners are advised to navigate with caution in the area.

Charts will be updated in due course.

Chart which will be affected - Aus 545 - Aus 554 - PNG 679 - PNG 680

1110(T)/2019 PAPUA NEW GUINEA - Oreore Channel - Light buoy off station

National Maritime Safety Authority PNG Coastal Navigation Warning 39/2019

The port lateral light buoy, Q.R (10° 13'.68 S 150° 52'.78 E), is off station.

Chart temporarily affected - PNG 628

1331(T)/2019 PAPUA NEW GUINEA - Isulailai Point - Light beacon unlit
National Maritime Safety Authority PNG Warning 43/2019

The light beacon, *Fl(2)5s 17m 9M* (10° 33'.63 S 150° 41'.71 E), is unlit.

Chart temporarily affected - Aus 625 - PNG 508

516(T)/2020 PAPUA NEW GUINEA - Kimbe - Light beacon unlit
National Maritime Safety Authority PNG Notice 21(T)/2020

The light beacon, *Fl.G.5s 6m 4M No3* (5° 32'.00 S 150° 09'.56 E), is unlit.

Chart temporarily affected - PNG 674 - PNG 677

564(T)/2020 PAPUA NEW GUINEA - Dampier Strait - Nesup Channel - Light buoys off station
National Maritime Safety Authority PNG , B Cooper

The port lateral light buoy, *Fl.R.2s* (5° 53'.27 S 148° 08'.70 E), and the starboard lateral light buoy, *Fl.G.2s* (5° 53'.92 S 148° 09'.05 E), are off station.

Chart temporarily affected - PNG 673

668(T)/2020 PAPUA NEW GUINEA - Dauan Island - Light altered
HMAS *Mermaid*

The light, *Fl.R.6s* (9° 25'.38 S 142° 32'.07 E), has been temporarily altered to *F.R.*

Chart temporarily affected - Aus 841

771(T)/2020 PAPUA NEW GUINEA - Boera Head - Light unlit
National Maritime Safety Authority PNG Warning 6/2019

The light, *Fl.2-5s 33m 10M* (9° 23'.39 S 147° 00'.85 E), is unlit.

Chart temporarily affected - PNG 379 - PNG 647

826(P)/2020 PAPUA NEW GUINEA - Batumata Point - Shoaling
LADS Flight

Latest survey shows shoaler depths than those charted may exist in and around the islands and reefs in the area between Galovi (Howard) Reef (10° 11'.1 S 148° 08'.7 E) and Eunoro Island (10° 23'.6 S 149° 27.3 E).

Mariners are advised to navigate with caution in the area.

Charts will be updated in due course.

Chart which will be affected - PNG 506 - PNG 507 - PNG 623

963(T)/2020 PAPUA NEW GUINEA - Caution Bay - Light beacon damaged
National Maritime Safety Authority PNG Notice 39/2020

The light beacon, *Fl.Bu.2s 8M RL2* (9° 17'.98 S 146° 58'.19 E), is damaged and unlit.

Chart temporarily affected - PNG 647 - PNG 648

116(P)/2021 PAPUA NEW GUINEA - Kavieng to Neitab Island - Shoaling
LADS Flight

Latest survey shows shoaler depths than those charted may exist in an area bounded by the coast and the following positions:

2° 22'.61 S 150° 09'.71 E
2° 21'.43 S 150° 08'.54 E

2° 20'.33 S 150° 09'.36 E
2° 18'.98 S 150° 11'.37 E
2° 18'.08 S 150° 15'.72 E
2° 21'.25 S 150° 23'.71 E
2° 27'.18 S 150° 31'.04 E
2° 34'.90 S 150° 35'.68 E
2° 36'.12 S 150° 42'.35 E
2° 36'.96 S 150° 42'.41 E
2° 36'.40 S 150° 35'.77 E
2° 40'.83 S 150° 31'.32 E.

Shoaler depths may also exist between the Kavieng coast (2° 35'.21 S 150° 47'.31 E) and the islands (Nusa, Nusalik and Nago).

Mariners are advised to navigate with caution in the area.

Charts will be updated in due course.

Chart which will be affected - PNG 392 - PNG 393 - PNG 543 - PNG 666

118(T)/2021 PAPUA NEW GUINEA - Madehas Island - Light unlit

National Maritime Safety Authority PNG

The light, *Fl. 10s 137m 16M* (5° 27'.63 S 154° 38'.06 E), is unlit.

Chart temporarily affected - Aus 399 - Aus 4604 (INT 604) - Aus 4622 (INT 622) - PNG 397 - PNG 684

481(T)/2021 PAPUA NEW GUINEA - Caution Bay - Light beacon unlit

National Maritime Safety Authority PNG Coastal Navigation Warning 9/2021

The light beacon, *Fl. G. 3s 6M* (9° 18'.54 S 146° 57'.25 E), is unlit.

Chart temporarily affected - PNG 647

985(T)/2021 PAPUA NEW GUINEA - Saibai Island - Shoaling

Former Notice - 201(T)/2021 is cancelled

HMAS *Paluma*, HMAS *Mermaid*

Latest survey indicates shoaler depths than those charted exist in an area bounded by the following positions:

9° 20'.66 S 142° 36'.94 E
9° 20'.15 S 142° 39'.81 E
9° 17'.86 S 142° 48'.32 E
9° 21'.86 S 142° 47'.07 E
9° 21'.01 S 142° 40'.60 E
9° 21'.80 S 142° 37'.67 E
9° 22'.75 S 142° 37'.04 E
9° 22'.72 S 142° 35'.37 E
9° 22'.46 S 142° 34'.10 E
9° 21'.74 S 142° 34'.60 E.

Mariners are advised to navigate with caution in the area.

Charts will be updated in due course.

Chart temporarily affected - Aus 840 - Aus 841

1067(T)/2021 PAPUA NEW GUINEA - Tavui Point - Light unlit

National Maritime Safety Authority PNG Coastal Navigation Warning 26/2021

The light, *Fl. 8s 47m 18M* (4° 08'.16 S 152° 10'.21 E), is unlit.

Chart temporarily affected - Aus 4604 (INT 604) - Aus 4622 (INT 622) - PNG 545 - PNG 554 - PNG 680

327(T)/2022 PAPUA NEW GUINEA - Bonvouloir Islands - Aulelowa (Hastings) Island - Light unlit

National Maritime Safety Authority PNG Coastal Navigation Warning 8/2022

The light, *Fl(2)6s 8m 10M* (10° 20'.48 S 151° 52'.07 E), is unlit.

Chart temporarily affected - PNG 509 - PNG 512

670(P)/2022 PAPUA NEW GUINEA - Star Reefs Passage - Shoaling
Fugro LADS

Latest survey indicates shoaler depths than those charted may exist in an area bounded by the following positions:

8° 16'.32 S 149° 35'.81 E
8° 17'.57 S 149° 34'.96 E
8° 26'.58 S 149° 42'.16 E
8° 34'.69 S 149° 54'.56 E
8° 33'.37 S 149° 55'.41 E
8° 27'.31 S 149° 50'.78 E.

Mariners are advised to navigate with caution in the area.

Charts will be updated in due course.

Chart which will be affected - PNG 519

785(T)/2022 PACIFIC OCEAN - Scientific instruments
UKHO

Grey pillar buoys exist in the following positions:

5° 02'.3 N 164° 49'.9 E
0° 00'.8 N 164° 59'.8 E
1° 59'.9 S 164° 58'.6 E
5° 01'.0 S 165° 10'.0 E
8° 02'.2 S 164° 46'.4 E.

Chart temporarily affected - Aus 4604 (INT 604)

792(T)/2022 PAPUA NEW GUINEA - Ava Point - Light unlit
National Maritime Safety Authority PNG Coastal Navigation Warning 25/2021

The light, *Fl. 12s 188m 10M* (10° 34'.14 S 149° 52'.89 E), is unlit.

Chart temporarily affected - Aus 4604 (INT 604) - PNG 507

794(T)/2022 PAPUA NEW GUINEA - Huon Gulf - Fish aggregating devices
National Maritime Safety Authority PNG Coastal Navigation Warning 8/2018

23 fish aggregating devices exist in an area bounded by the following positions:

7° 00'.0 S 147° 40'.0 E
7° 55'.0 S 147° 40'.0 E
7° 55'.0 S 148° 50'.0 E
7° 00'.0 S 148° 50'.0 E.

Mariners are advised to navigate with caution.

Chart temporarily affected - Aus 4622 (INT 622) - PNG 386 - PNG 521 - PNG 522 - PNG 523

829(T)/2022 PAPUA NEW GUINEA - Dekatuwe (Bright) Island - Light beacon unlit
Former Notice - 500(T)/2022 is cancelled
National Maritime Safety Authority PNG Notice 10/2022, 14/2022

The light beacon, *Fl. 2.5s 16m 10M* (10° 31'.89 S 151° 12'.74 E), is unlit.

Chart temporarily affected - PNG 509

830(T)/2022 PAPUA NEW GUINEA - Kanaweya (Shortland) Reefs to Nuakata Passage - Light beacons unlit
National Maritime Safety Authority PNG Notice 15/2022, 16/2022

The light beacons, *Fl(3)12s 11m 10M* (10° 30'.70 S 151° 08'.13 E) and *Fl(2)10s 7m 6M* (10° 23'.60 S 151° 00'.77 E), are unlit.

Chart temporarily affected - PNG 508 - PNG 509 - PNG 628

831(T)/2022 PAPUA NEW GUINEA - Wadei Island - Light beacon unlit

National Maritime Safety Authority PNG Notice 17/2022

The starboard lateral light beacon, *Fl(2)G.8s 7m 3M* (2° 39'.45 S 150° 37'.68 E), is unlit.

Chart temporarily affected - PNG 543 - PNG 666

278(T)/2023 PAPUA NEW GUINEA - Boli Point - Trobriand Islands - Light unlit

National Maritime Safety Authority PNG

The light, *Fl.G.5s* (08° 33'.77 S 151° 01'.10 E) is unlit.

Chart temporarily affected - PNG 516 - PNG 637

279(T)/2023 PAPUA NEW GUINEA - Bomatu Point - Trobriand Islands - Light unlit

National Maritime Safety Authority PNG

The light, *Fl(3)15s 31m 10M* (08° 24'.09 S 151° 07'.20 E) is unlit.

Chart temporarily affected - PNG 516 - PNG 637

282(T)/2023 PAPUA NEW GUINEA - Galagalohi (Gallows) Reef - Goschen Strait - Light unlit

National Maritime Safety Authority PNG

The light, *Fl.5s 7m 10M* (10° 15'.44 S 151° 10'.39 E), is unlit.

Chart temporarily affected - PNG 509 - PNG 513

283(T)/2023 PAPUA NEW GUINEA - Kitava Island - Trobriand Islands - Light unlit

National Maritime Safety Authority PNG

The light, *Q* (08° 37'.70 S 151° 18'.34 E) is unlit.

Chart temporarily affected - PNG 515 - PNG 516 - PNG 637

284(T)/2023 PAPUA NEW GUINEA - Kui (Mekinley) Island - China Strait - Light unlit

National Maritime Safety Authority PNG

The light, *Q(9)15s* (10° 33'.21 S 150° 42'.39 E), is unlit.

Chart temporarily affected - PNG 625

285(T)/2023 PAPUA NEW GUINEA - Tamiaris Reef - Laughlan Islands - Light unlit

National Maritime Safety Authority PNG

The light, *Fl(2)8s* (09° 16'.84 S 153° 39'.38 E), is unlit.

Chart temporarily affected - PNG 514

890(T)/2023 PAPUA NEW GUINEA - Cape Lambert - Light unlit northwards

National Maritime Safety Authority PNG Coastal Navigation Warning 22/2023

The light, *Fl(3)15s 20m 10M* (4° 04'.49 S 151° 31'.18 E), is unlit.

Chart temporarily affected - Aus 4060 (INT 60) - Aus 4604 (INT 604) - Aus 4622 (INT 622) - PNG 545 - PNG 546

EAST TIMOR

NIL

MISCELLANEOUS

677(P)/2017 SOLOMON ISLANDS - Honiara and Lungga Roads - Shoaling UKHO

Latest survey shows shoaler depths than those charted may exist in the approaches to Honiara and within Lungga Roads (9° 25'.0 S 159° 58'.8 E).

Charts will updated in due course.

Chart which will be affected - SLB 101

678(T)/2017 SOLOMON ISLANDS - Lungga Point - Light beacon unlit Australian Hydrographic Service

The light beacon, *Fl(3)20s 10m 5M* (9° 24'.26 S 160° 01'.66 E), is unlit.

Chart temporarily affected - SLB 101 - SLB 201

91(P)/2018 SOLOMON ISLANDS - Ghizo Island - Shoaling Secretariat of the Pacific Community

Latest survey shows shoaler depths than those charted may exist in and around the islands and reefs in the area between Naru Island (8° 08'.3 S 156° 55'.1 E) and Sepo Island (8° 03'.2 S 156° 49.5 E).

Mariners are advised to navigate with caution in the area.

Charts will be updated in due course.

Chart which will be affected - SLB 102 - SLB 301 - SLB 302

987(T)/2018 TIMOR-LESTE - Dili - Light unlit HMAS *Paluma*

The light, *Fl.R.4s* (8° 33'.20 S 125° 34'.70 E), is unlit.

Chart temporarily affected - Aus 901

44(P)/2020 SOLOMON ISLANDS - Bina Harbour - Shoaling HMAS *Leeuwin*

Latest survey shows shoaler depths than those charted may exist in Bina Harbour (8° 56'.3 S 160° 45'.0 E).

Mariners are advised to navigate with caution in the area.

Charts will be updated in due course.

Chart which will be affected - SLB 104

406(P)/2020 SOLOMON ISLANDS - Port Noro to Kuri Point - Shoaling *Former Notice - 184(P)/2020 is cancelled* Australian Hydrographic Office , HMAS *Leeuwin*

Latest survey shows shoaler depths than those charted may exist in areas bounded by the following positions:

8° 15'.07 S 157° 11'.77 E
8° 15'.43 S 157° 11'.52 E
8° 15'.78 S 157° 11'.47 E
8° 15'.78 S 157° 12'.00 E
8° 15'.07 S 157° 11'.89 E;
and
8° 19'.68 S 157° 11'.83 E
8° 21'.27 S 157° 12'.62 E
8° 21'.09 S 157° 13'.14 E
8° 19'.05 S 157° 12'.30 E

8° 19'.17 S 157° 11'.76 E.

Mariners are advised to navigate with caution in the area.

Charts will be updated in due course.

Chart which will be affected - SLB 102

80(P)/2022 SOUTHERN OCEAN - Antarctica - Mawson - Shoaling

Australian Antarctic Division

Latest survey indicates shoaling in the approach to Mawson in the following locations

67° 25'.00 S 062° 46'.20 E

67° 29'.58 S 062° 52'.92 E

67° 30'.08 S 062° 50'.45 E

67° 30'.70 S 062° 53'.35 E

67° 30'.45 S 062° 51'.56 E

67° 35'.00 S 062° 52'.25 E

Mariners are advised to navigate with caution in the area.

Charts will be updated in due course.

Chart which will be affected - Aus 600 (INT 9036)

361(P)/2022 TIMOR-LESTE - Dili - Shoaling

HMAS *Leeuwin*

Latest survey indicates shoaler depths than those charted may exist in an area bounded by the coast and the following positions:

8° 33'.82 S 125° 23'.74 E

8° 32'.93 S 125° 23'.67 E

8° 31'.38 S 125° 31'.30 E

8° 32'.69 S 125° 31'.18 E.

Mariners are advised to navigate with caution in the area.

Charts will be updated in due course.

Chart which will be affected - Aus 312 - Aus 313 - Aus 321

515(T)/2023 SOLOMON ISLANDS - Nusatupe Island - Topmarks destroyed

Former Notice - 847(T)/2018 is cancelled

Solomon Islands Maritime Authority Notice 7/2023

The topmark on light beacons, *Fl(3)R.10s 10m 5M* (8° 05'.55 S 156° 51'.81 E) and *Fl(2)G.10s 8m 3M* (8° 05'.81 S 156° 51'.66 E), have been destroyed.

Chart temporarily affected - SLB 102 - SLB 301 - SLB 302

594(T)/2023 SOLOMON ISLANDS - Maringe Lagoon - Sogna Reef - Light beacon unlit

Solomon Islands Maritime Authority Notice 9/2023

The light beacon, *Fl.20s 10m 10M* (8° 09'.00 S 159° 37'.92 E), is unlit.

Chart temporarily affected - SLB 104 - SLB 303 - SLB 304

789(T)/2023 SOLOMON ISLANDS - Munda Point to Sosomboeke Island - Light beacon unreliable; light beacon unlit

Solomon Islands Maritime Authority Notice 12/2023

The light beacon, *Fl.5s 5M* (8° 20'.19 S 157° 13'.77 E), is unreliable.

The light beacon, *Fl(2)10s 10m 10M* (8° 08'.30 S 157° 09'.64 E), is unlit.

Chart temporarily affected - SLB 102 - SLB 302

842(T)/2023 SOLOMON ISLANDS - New Georgia Island - Munda Point - Light beacon unlit
Solomon Islands Maritime Authority Notice 16/2023

The light beacon, *Fl.10s 10m 10M* (8° 23'.02 S 157° 13'.59 E), is unlit.

Chart temporarily affected - Aus 4622 (INT 622) - SLB 302

878(T)/2023 SOLOMON ISLANDS - Honiara - Wrecks
Aero Asahi Corporation

Wrecks exist as follows:

<i>Position</i>	<i>Remarks</i>
9° 25'.38 S 159° 55'.62 E	least depth, <i>5.1m</i>
9° 25'.56 S 159° 57'.18 E	least depth, <i>1.3m</i>
9° 25'.68 S 159° 57'.28 E	least depth, <i>10.7m</i>
9° 25'.70 S 159° 57'.38 E	least depth, <i>6m</i>
9° 25'.71 S 159° 58'.67 E	least depth, <i>25.5m</i> .

Chart temporarily affected - SLB 101 - SLB 201