

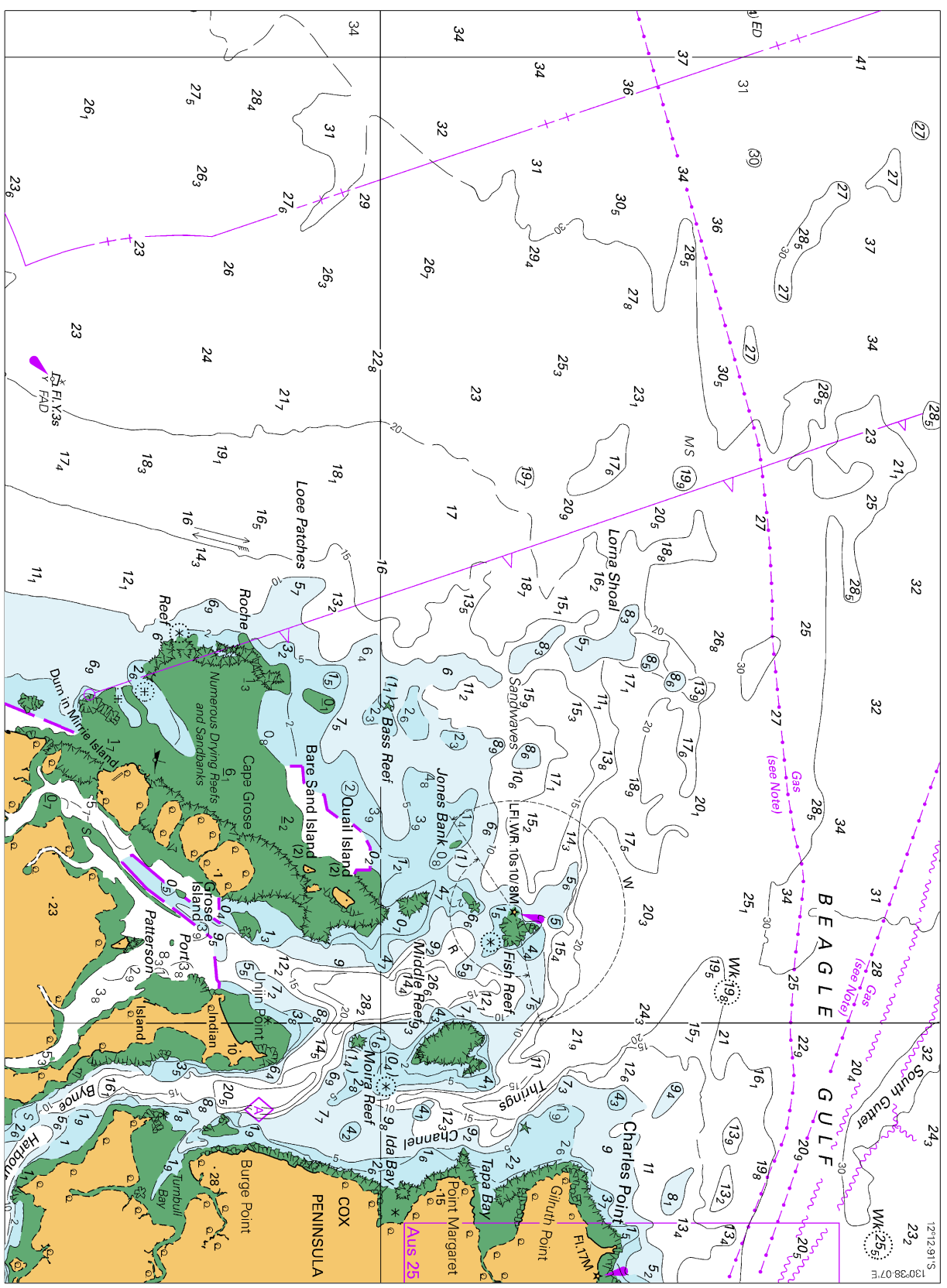
*To accompany Australian Notice to Mariners 267/2023*

**PRECAUTIONARY AREA**

Traffic within the Precautionary Area consists of vessels manoeuvring on various courses for the purpose of embarking or disembarking Pilots. Vessels should not approach or enter the Precautionary Area unless permitted by Lonsdale Vessel Traffic Service (VTS). Mariners are advised to navigate with caution in the vicinity of the Precautionary Area.

*Note for chart Aus 143*

To accompany Australian Notice to Mariners 259/2023

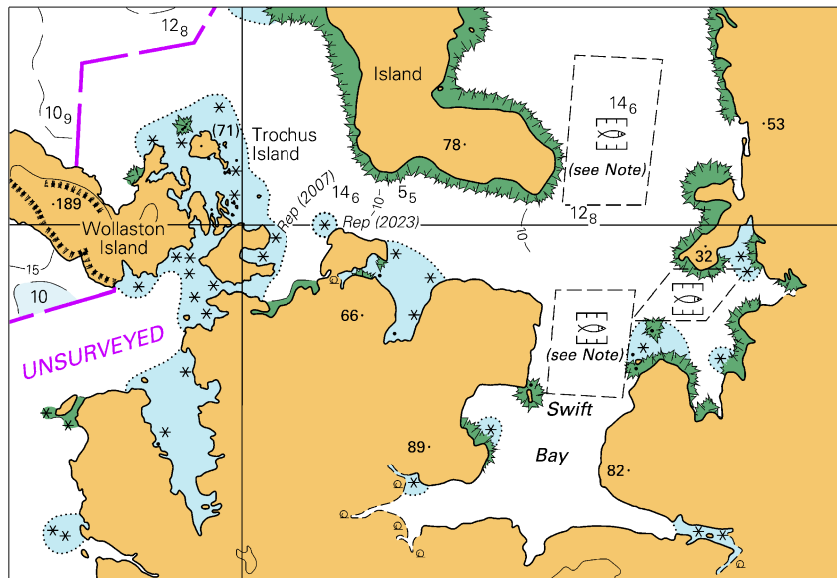


Block for chart Aus 316

© Commonwealth of Australia 2023

(217.4 x 159.8mm)

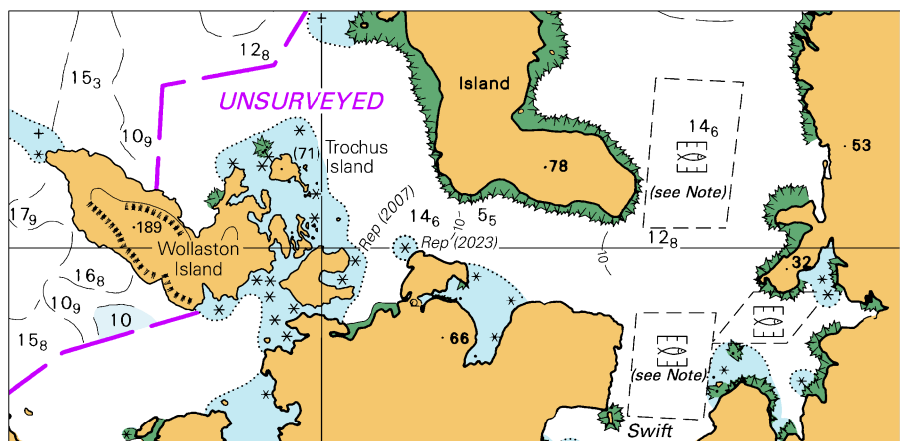
To accompany Australian Notice to Mariners 264/2023



Block for chart Aus 728 © Commonwealth of Australia 2023

(109.7 x 75.6mm)

To accompany Australian Notice to Mariners 264/2023

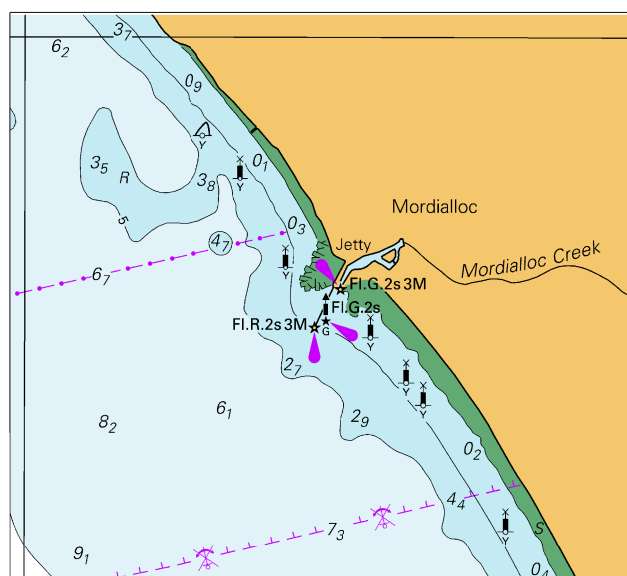


Block for chart Aus 729

© Commonwealth of Australia 2023

(117.8 x 57.1mm)

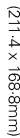
To accompany Australian Notice to Mariners 266/2023



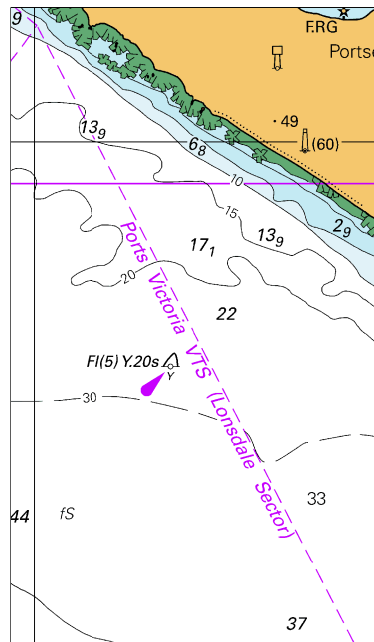
Block for chart Aus 155

(82.8 x 75.1mm)

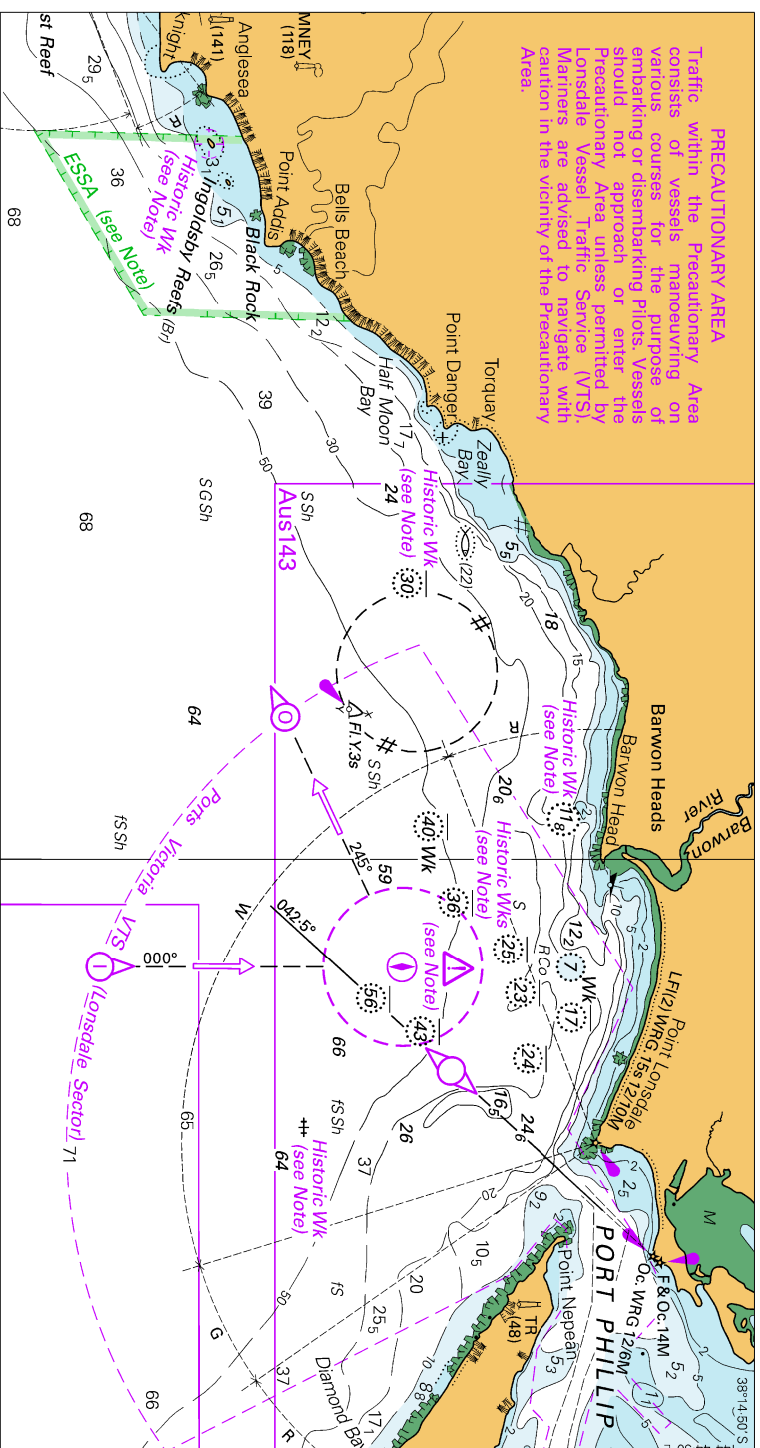
© Commonwealth of Australia 2023



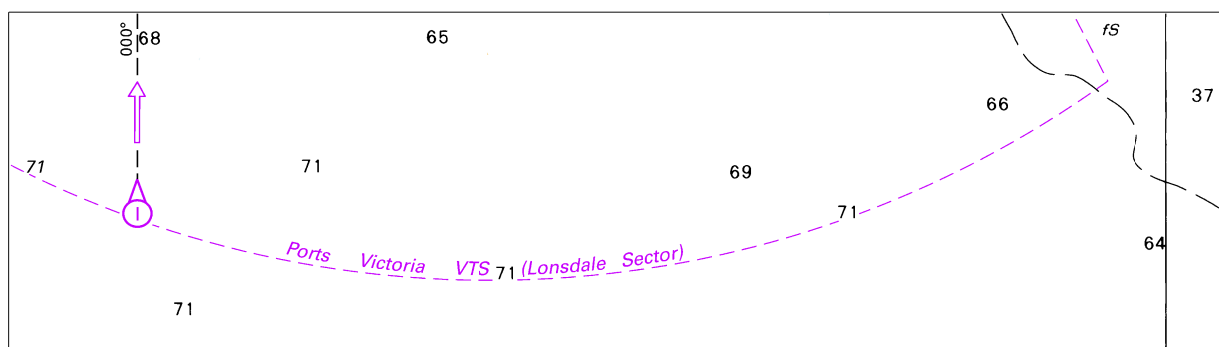
To accompany Australian Notice to Mariners 267/2023



Block B for chart Aus 143 (48.6 x 84.5mm)  
© Commonwealth of Australia 2023



To accompany Australian Notice to Mariners 267/2023

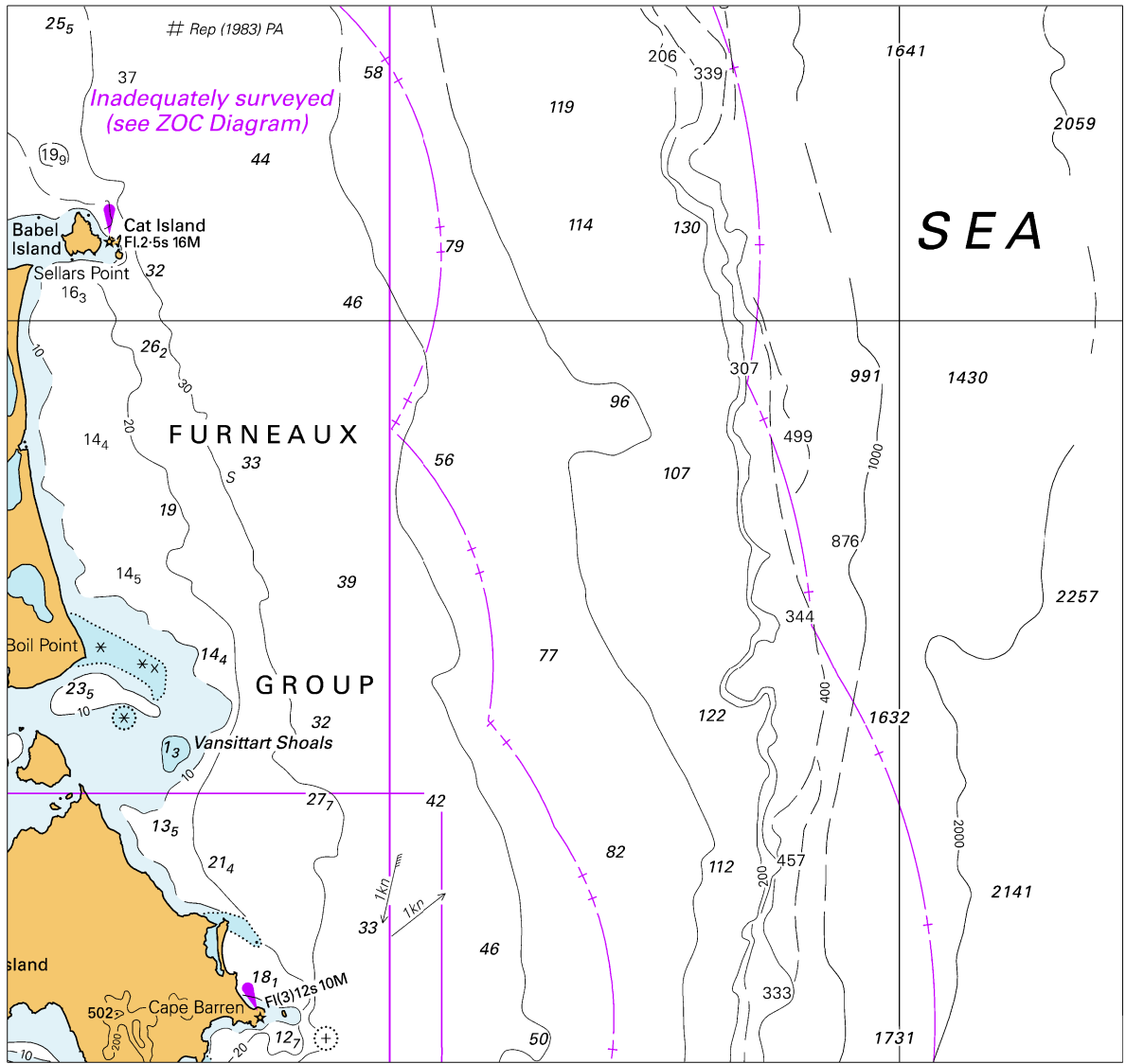


Block for chart Aus 801

© Commonwealth of Australia 2023

(161.0 x 44.8mm)

*To accompany Australian Notice to Mariners 268/2023*

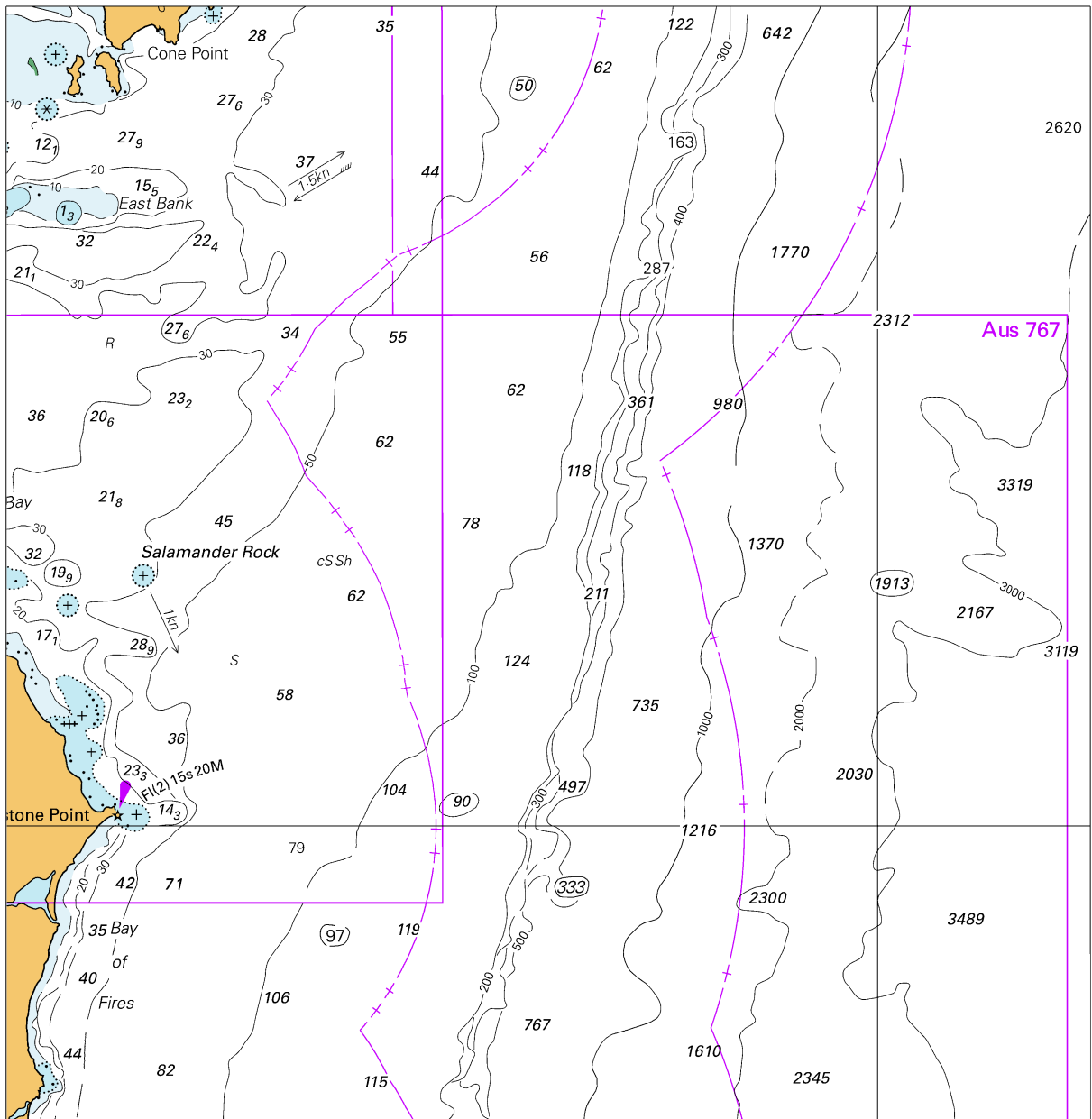


*Block A for chart Aus 487*

© Commonwealth of Australia 2023

(155.9 x 147.7mm)

To accompany Australian Notice to Mariners 268/2023

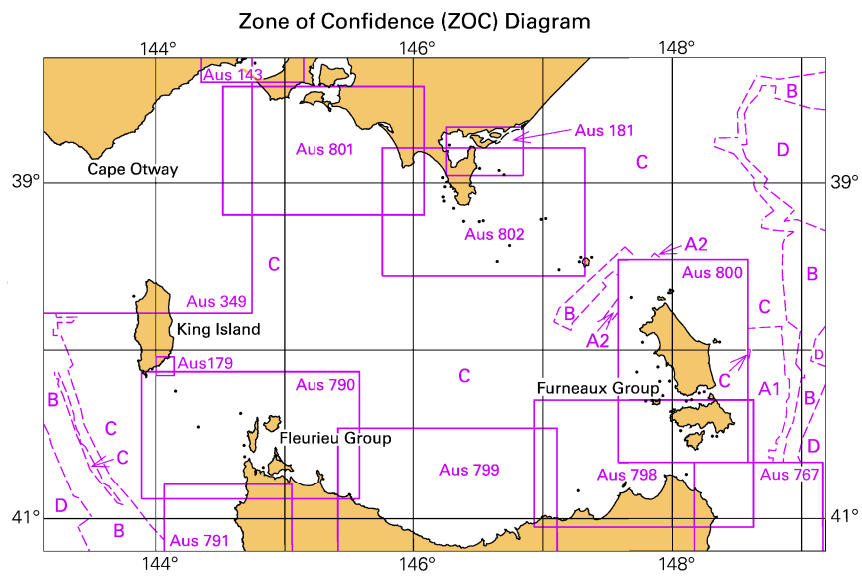


Block B for chart Aus 487

© Commonwealth of Australia 2023

(159.0 x 163.6mm)

To accompany Australian Notice to Mariners 268/2023

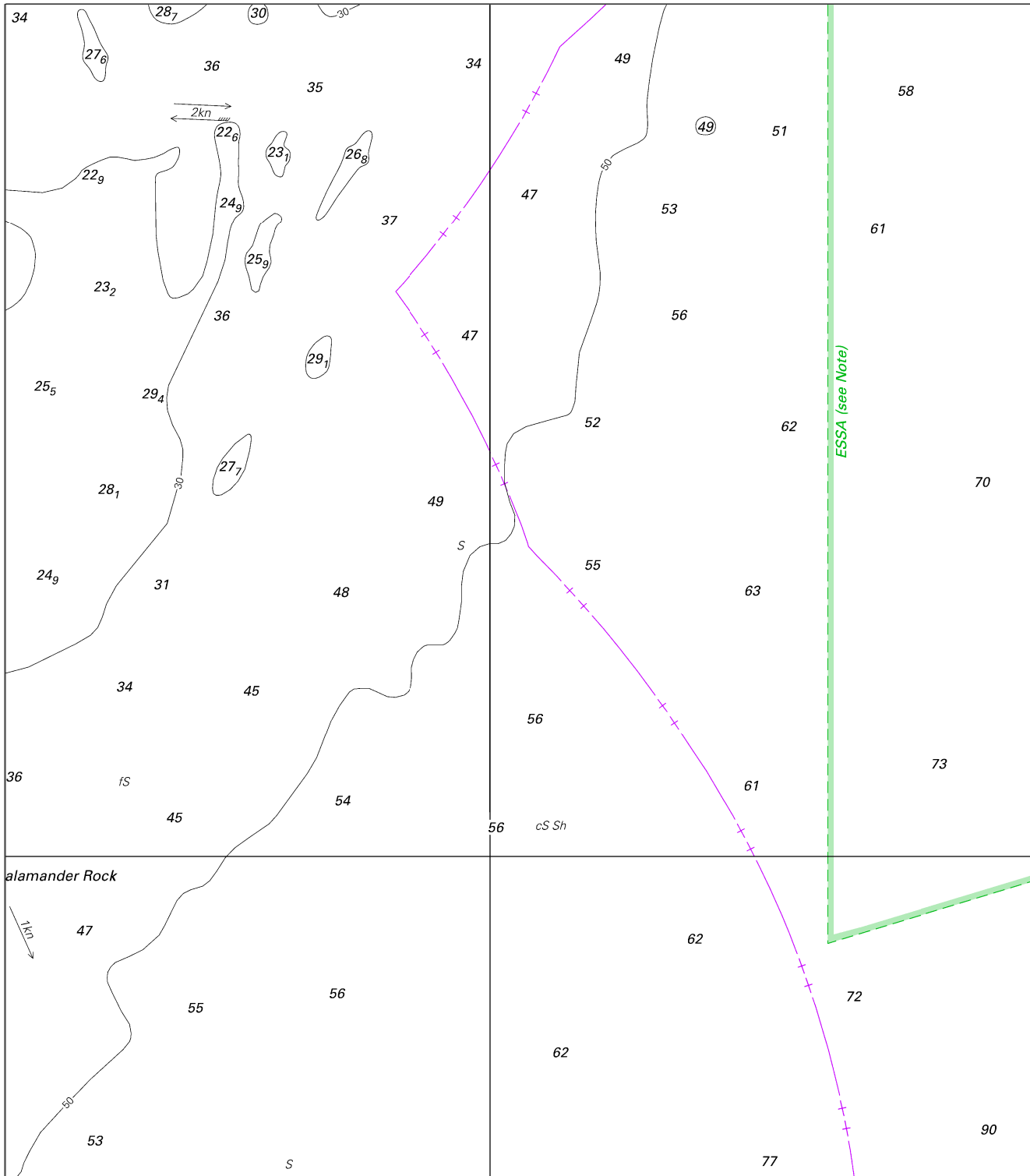


Block for chart Aus 487

© Commonwealth of Australia 2023

(103.5 x 65.4mm)

*To accompany Australian Notice to Mariners 268/2023*



*Block A for chart Aus 767*

© Commonwealth of Australia 2023

(174.0 x 199.0mm)

