

*To accompany Australian Notice to Mariners 130/2023*

**ELECTRONIC NAVIGATIONAL CHART (ENC)**

Larger scale ENC content exists in this area. When using electronic navigation systems, certain vessels (e.g. restricted by depth or size) may benefit from the additional level of detail shown in the largest scale ENC product available.

*Note for chart Aus 790*

*To accompany Australian Notice to Mariners 130/2023*

**ELECTRONIC NAVIGATIONAL CHART (ENC)**

Larger scale ENC content exists in this area. When using electronic navigation systems, certain vessels (e.g. restricted by depth or size) may benefit from the additional level of detail shown in the largest scale ENC product available.

*Note for chart Aus 798*

*To accompany Australian Notice to Mariners 130/2023*

**ESTUARY AND RIVER ENTRANCES**

The crossing of coastal bars and entry to rivers and estuaries is potentially dangerous. Bars and entrances are dynamic in nature, hence the depth and preferred approach may vary. Leading beacons and other navigational aids may not always indicate the best approach. If mariners are unsure of the condition at a particular bar or entrance, local information should be sought prior to crossing.

*Note for chart Aus 790*

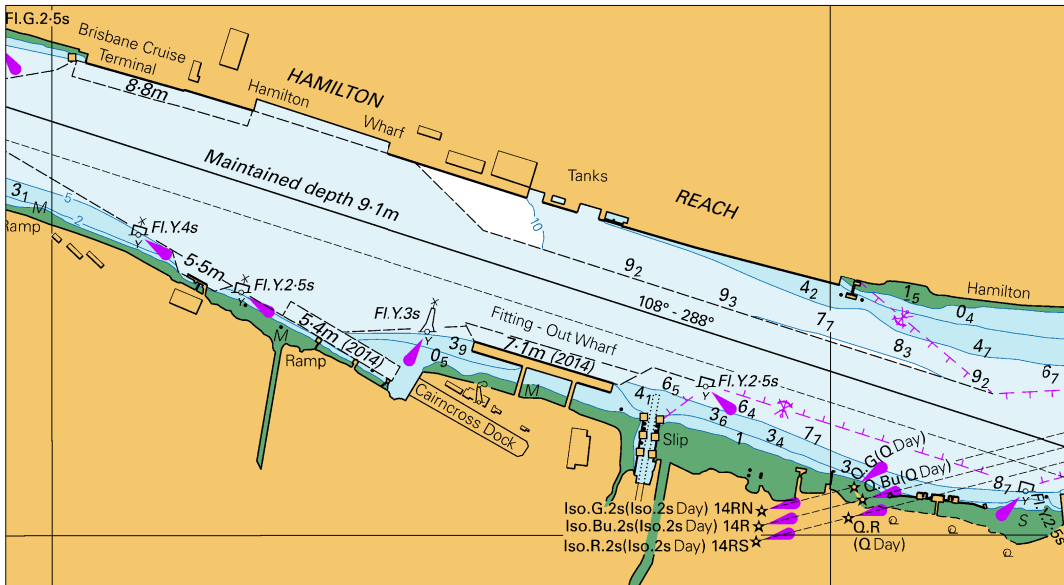
*To accompany Australian Notice to Mariners 130/2023*

**ELECTRONIC NAVIGATIONAL CHART (ENC)**

Larger scale ENC content exists in this area. When using electronic navigation systems, certain vessels (e.g. restricted by depth or size) may benefit from the additional level of detail shown in the largest scale ENC product available.

*Note for chart Aus 800*

*To accompany Australian Notice to Mariners 120/2023*

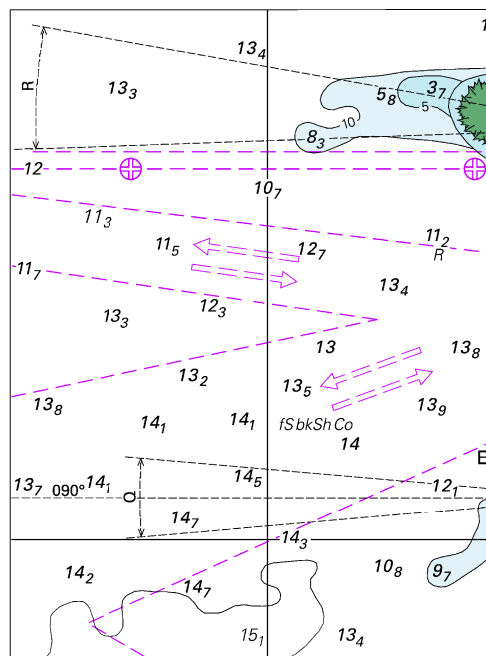


Block for chart Aus 237

© Commonwealth of Australia 2023

(140.2 x 76.7mm)

*To accompany Australian Notice to Mariners 123/2023*

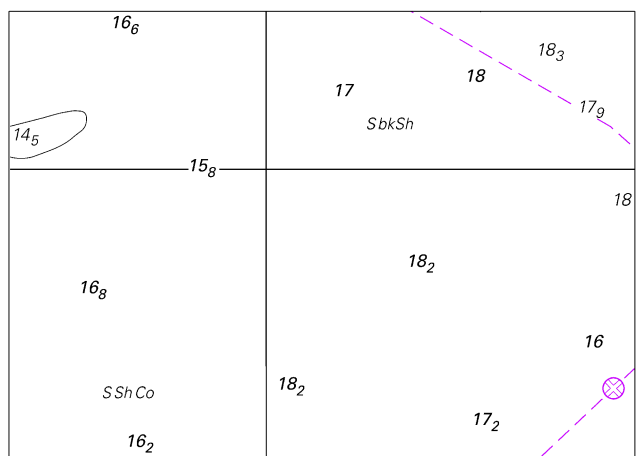


Block A for chart Aus 292

(63.4 x 86.1mm)

© Commonwealth of Australia 2023

To accompany Australian Notice to Mariners 123/2023



Block B for chart Aus 292

(82.7 x 59.2mm)

© Commonwealth of Australia 2023

The map illustrates the Prince of Wales Sound area, highlighting a proposed two-way route. The route is marked by a dashed line with arrows indicating the direction of travel. Key locations and features include:

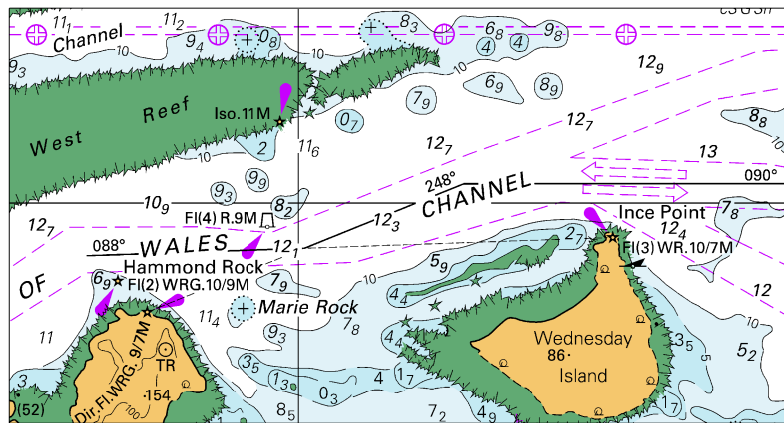
- Islands and Banks:** Gannet, Varzin, Goods, Friday, and Sunk Reefs.
- Two-Way Route:** A dashed line with arrows showing the path of travel through the sound.
- Goods Island:** A small island located near the center of the sound.
- Sunk Reefs:** A series of reefs located near the bottom right of the map.
- Sandwaves:** Indicated by a note at the bottom right.
- Island:** A label at the bottom right.

The map also includes a legend at the bottom right, which defines the symbols used for 'Goods Island' and 'Sunk Reefs'.

© Commonwealth of Australia 2023

(248.3 × 84.8mm)

To accompany Australian Notice to Mariners 123/2023

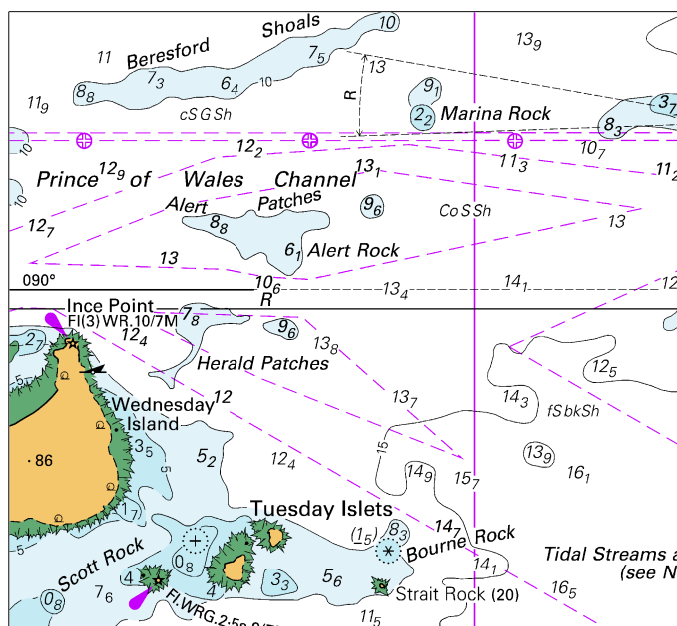


Block B for chart Aus 700

(103.5 x 54.9mm)

© Commonwealth of Australia 2023

To accompany Australian Notice to Mariners 123/2023

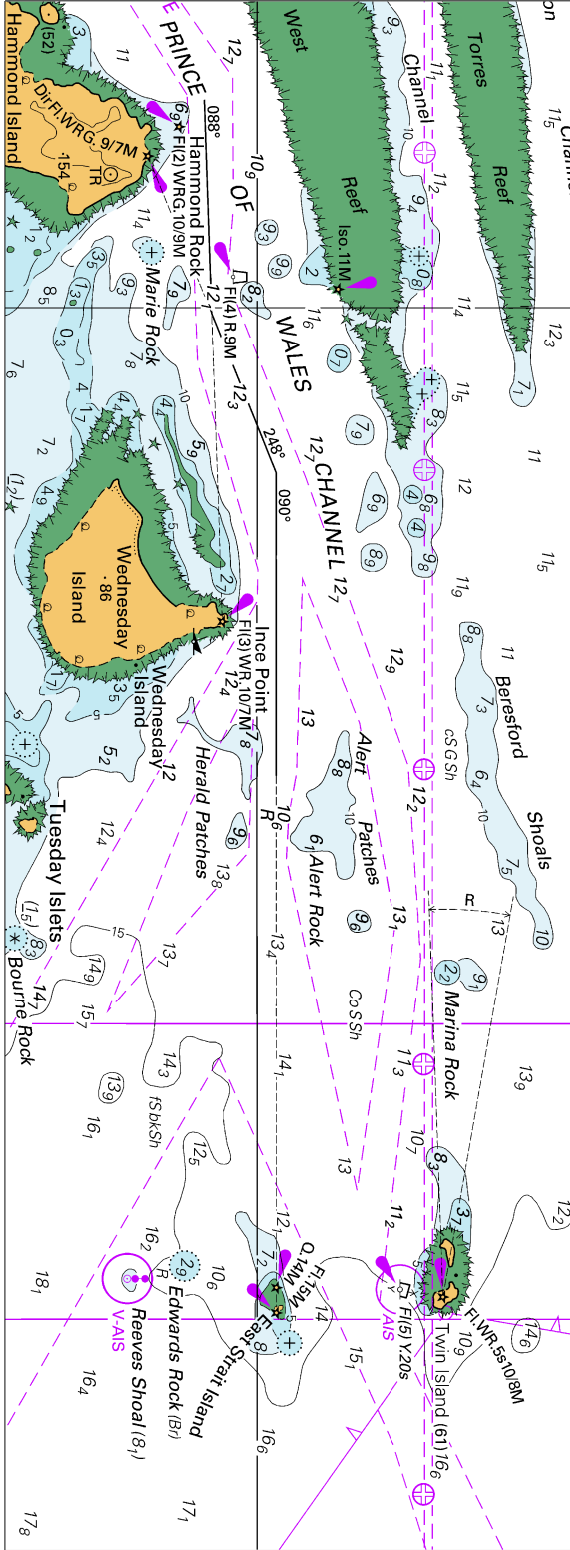


Block for chart Aus 839

(89.5 x 81.6mm)

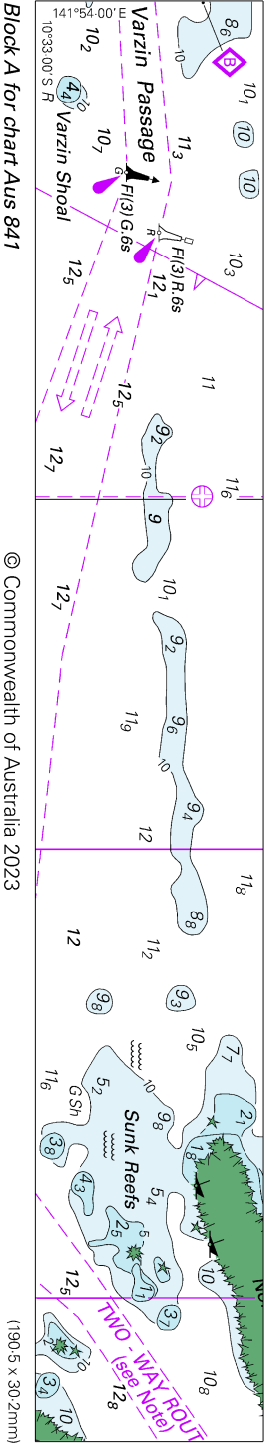
© Commonwealth of Australia 2023

To accompany Australian Notice to Mariners 123/2023

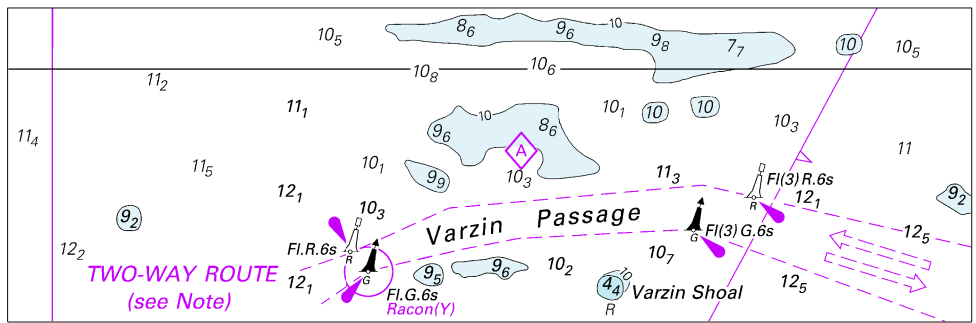




To accompany Australian Notice to Mariners 123/2023



To accompany Australian Notice to Mariners 123/2023



To accompany Australian Notice to Mariners 130/2023

