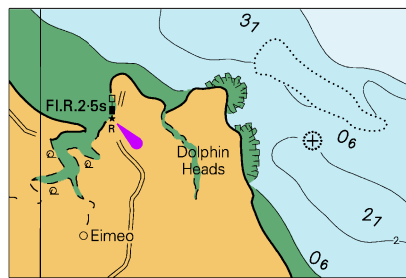
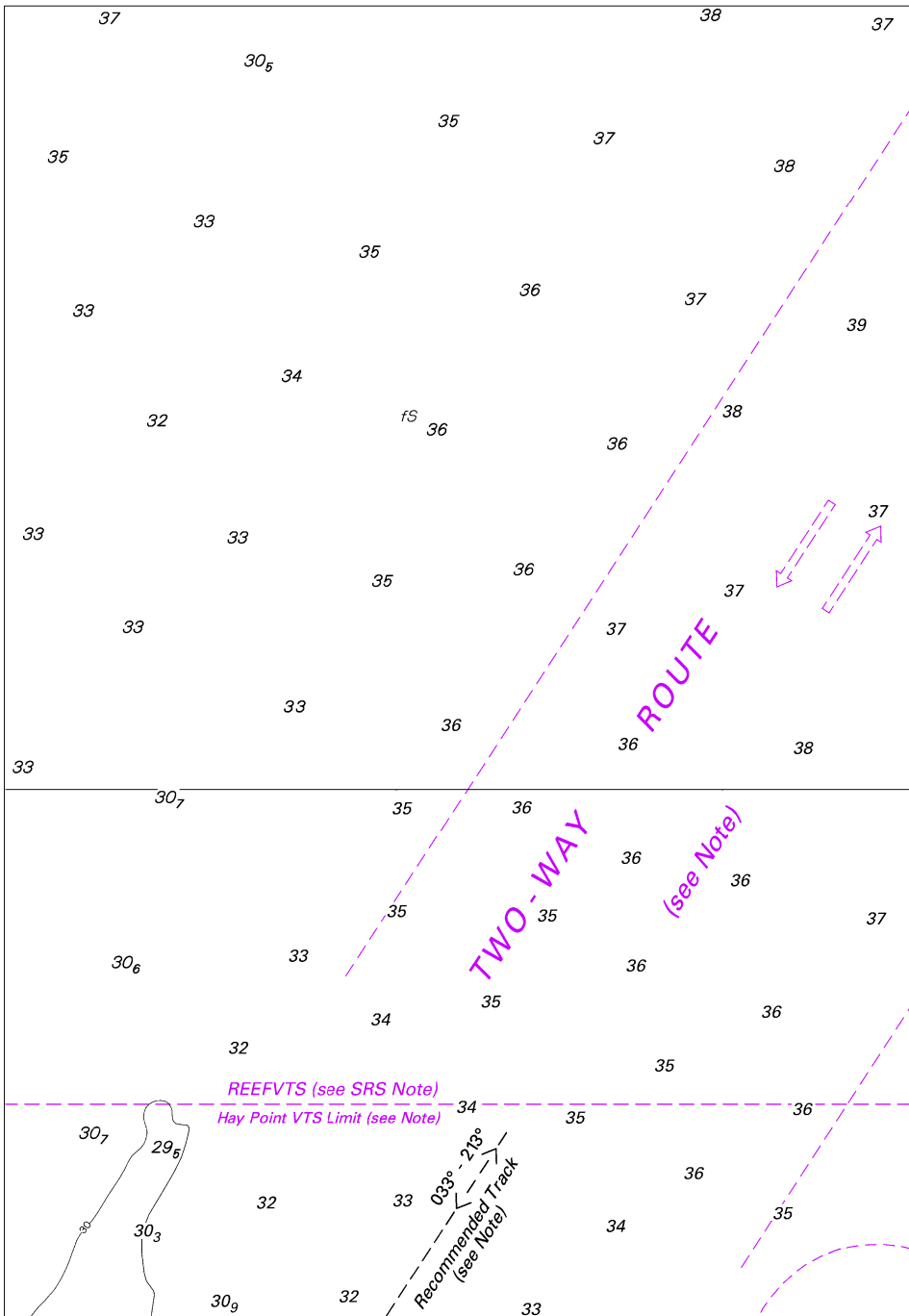


To accompany Australian Notice to Mariners 954/2023



Block A for chart Aus 251 (53.5 x 35.4mm)
© Commonwealth of Australia 2023

To accompany Australian Notice to Mariners 954/2023



Block B for chart Aus 251

© Commonwealth of Australia 2023

(124.2 x 180.0mm)

To accompany Australian Notice to Mariners 960/2023

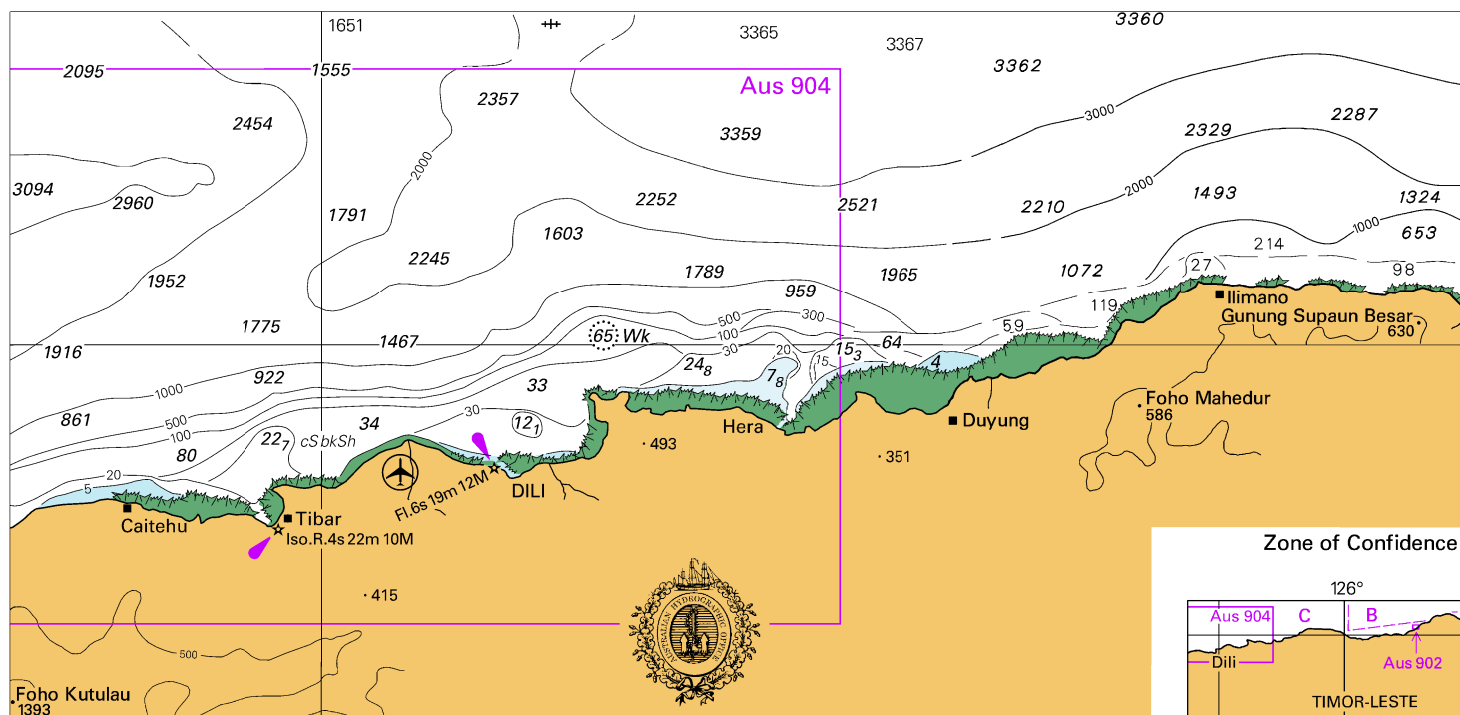
Tidal Levels referred to Datum of Soundings								
Place	Lat S	Long E	Heights in metres above datum					
			HAT	MHHW	MLHW	MSL	MHLW	MLLW
Hera Offshore	8° 31'	125° 41'	2·7	2·5	1·6	1·4	1·3	0·4
Hera	8 32	125 41	2·7	2·5	1·6	1·4	1·3	0·4
Buku Seritutun	8 30	125 40	2·4	2·3	1·3	1·3	1·3	0·3
Fatu Cama Point	8 31	125 37	2·6	2·5	1·6	1·4	1·3	0·4
Fatu Cama Offshore	8 31	125 35	2·4	2·2	1·3	1·3	1·3	0·3
Point Laguebara	8 33	125 34	2·6	2·5	1·5	1·4	1·3	0·4
Dili Offshore	8 32	125 34	2·5	2·4	1·5	1·4	1·3	0·3
Dili	8 34	125 33	2·6	2·4	1·5	1·3	1·2	0·3
Pertamina Wharf	8 33	125 33	2·4	2·3	1·4	1·3	1·1	0·3
Baia de Tibar	8 34	125 29	2·5	2·3	1·3	1·3	1·2	0·3
Rauhassa	8 33	125 26	2·5	2·3	1·3	1·3	1·3	0·3

Block for chart Aus 904

© Commonwealth of Australia 2023

(144·9 x 63·3mm)

To accompany Australian Notice to Mariners 961/2023

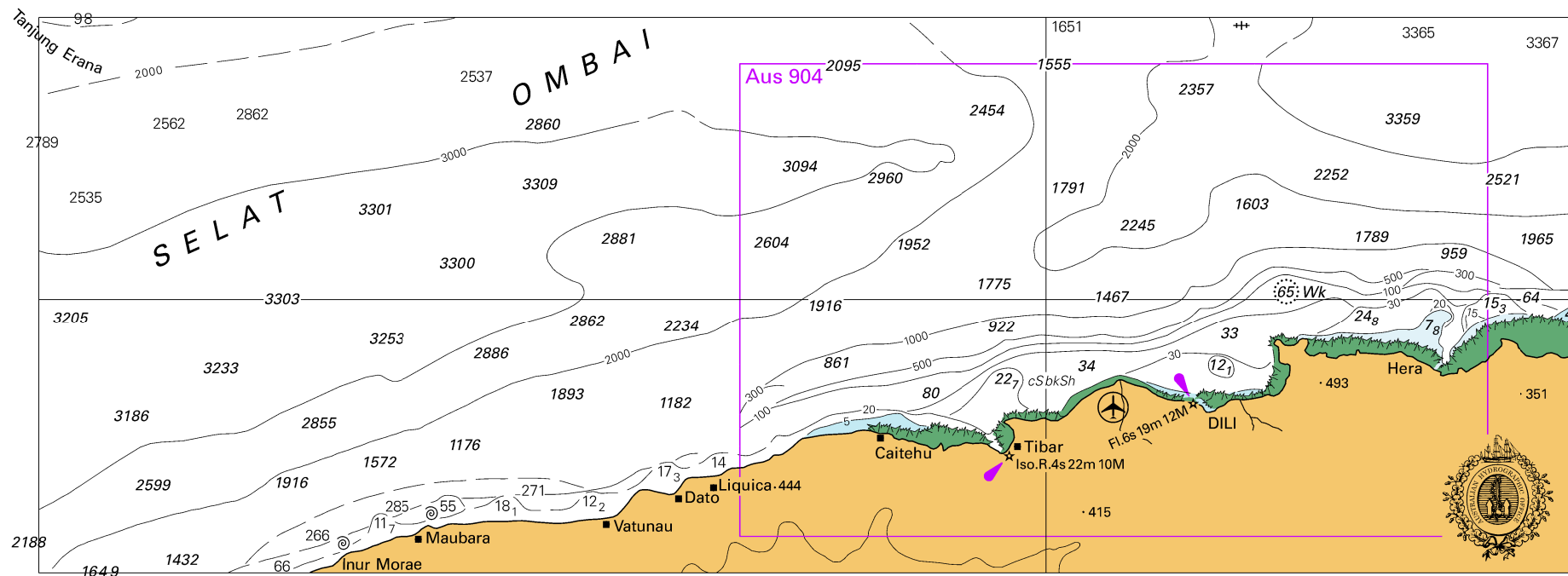


Block for chart Aus 312

© Commonwealth of Australia 2023

(191.7 x 93.5mm)

To accompany Australian Notice to Mariners 961/2023

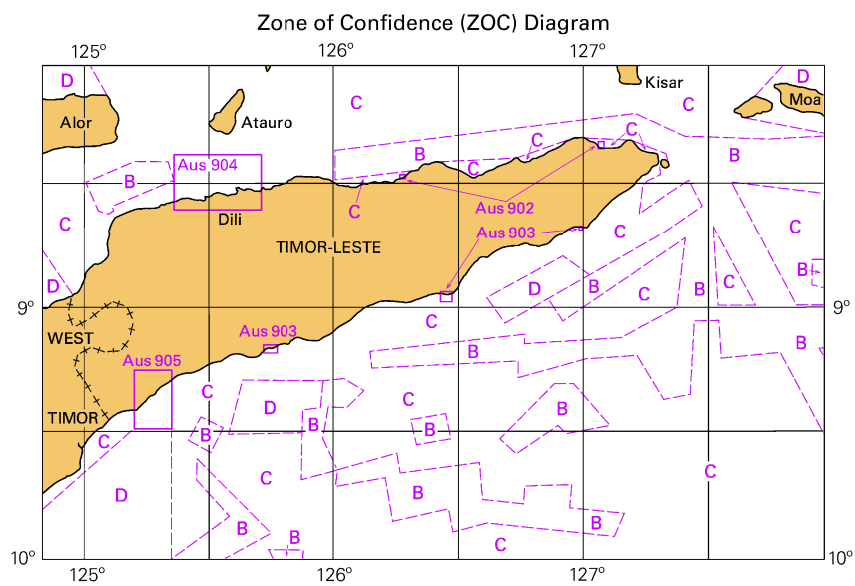


Block for chart Aus 313

© Commonwealth of Australia 2023

(238.4 x 86.2mm)

To accompany Australian Notice to Mariners 961/2023

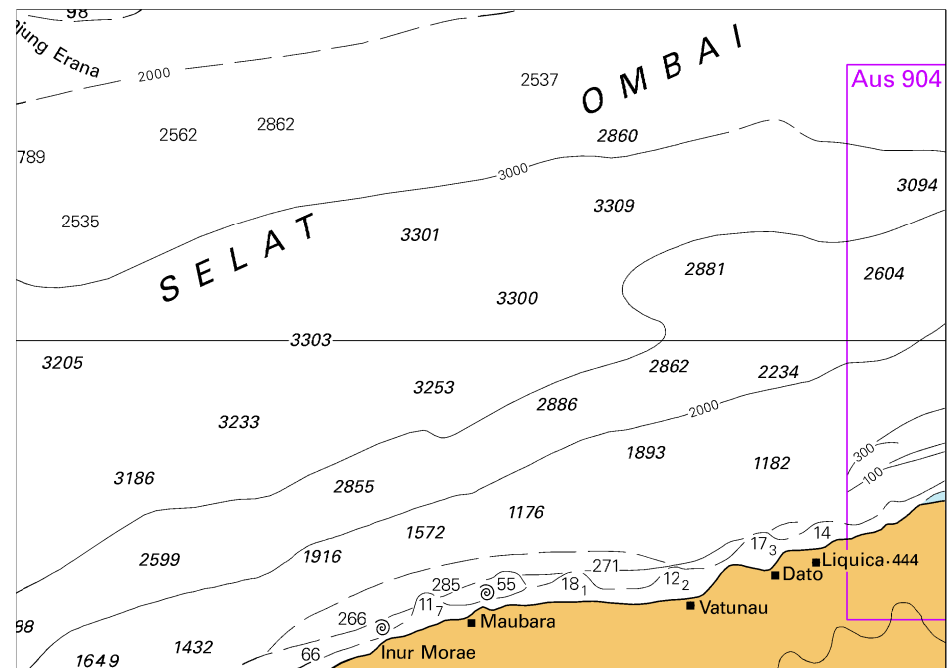


Block for chart Aus313 Block Zoc

(103.2 x 65.2mm)

© Commonwealth of Australia 2023

To accompany Australian Notice to Mariners 961/2023

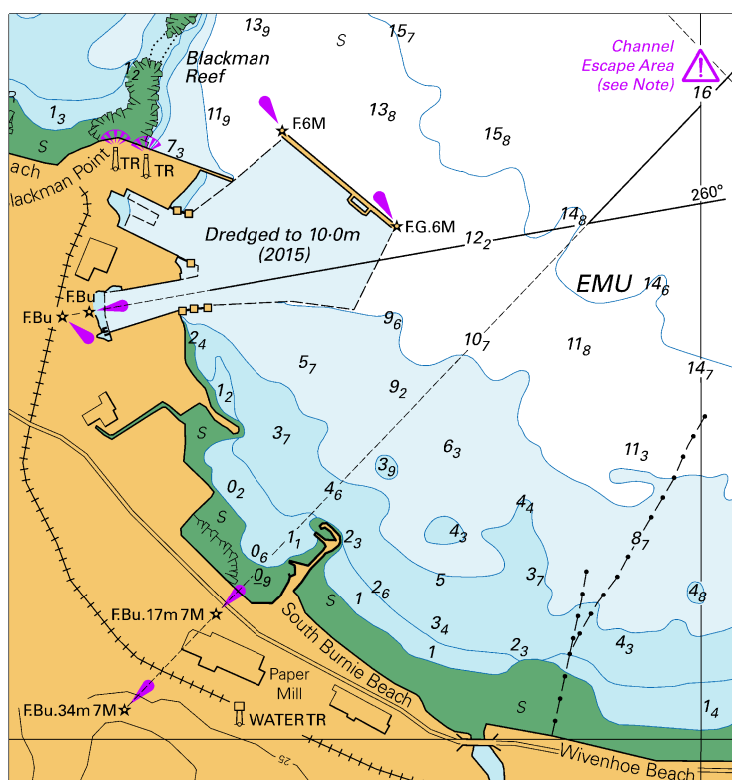


Block for chart Aus 321

© Commonwealth of Australia 2023

(123.0 x 87.2mm)

To accompany Australian Notice to Mariners 967/2023



Block for chart Aus163

(96.7 x 101.8mm)

© Commonwealth of Australia 2023