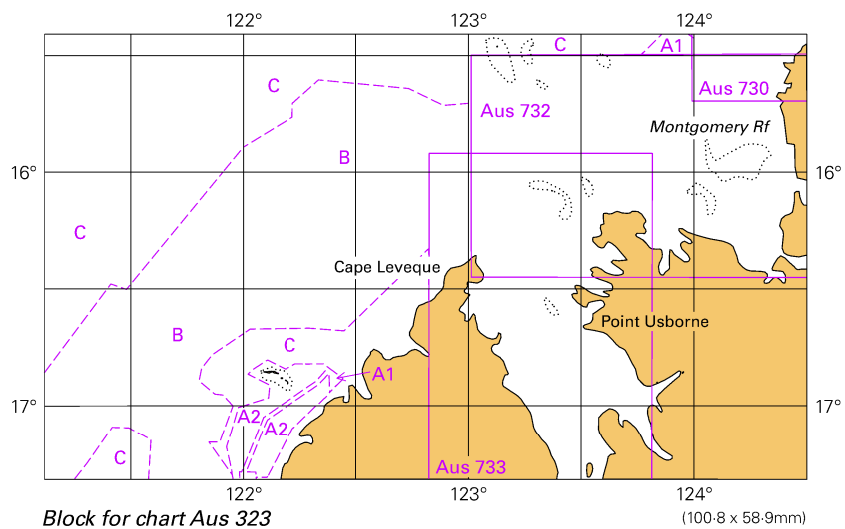
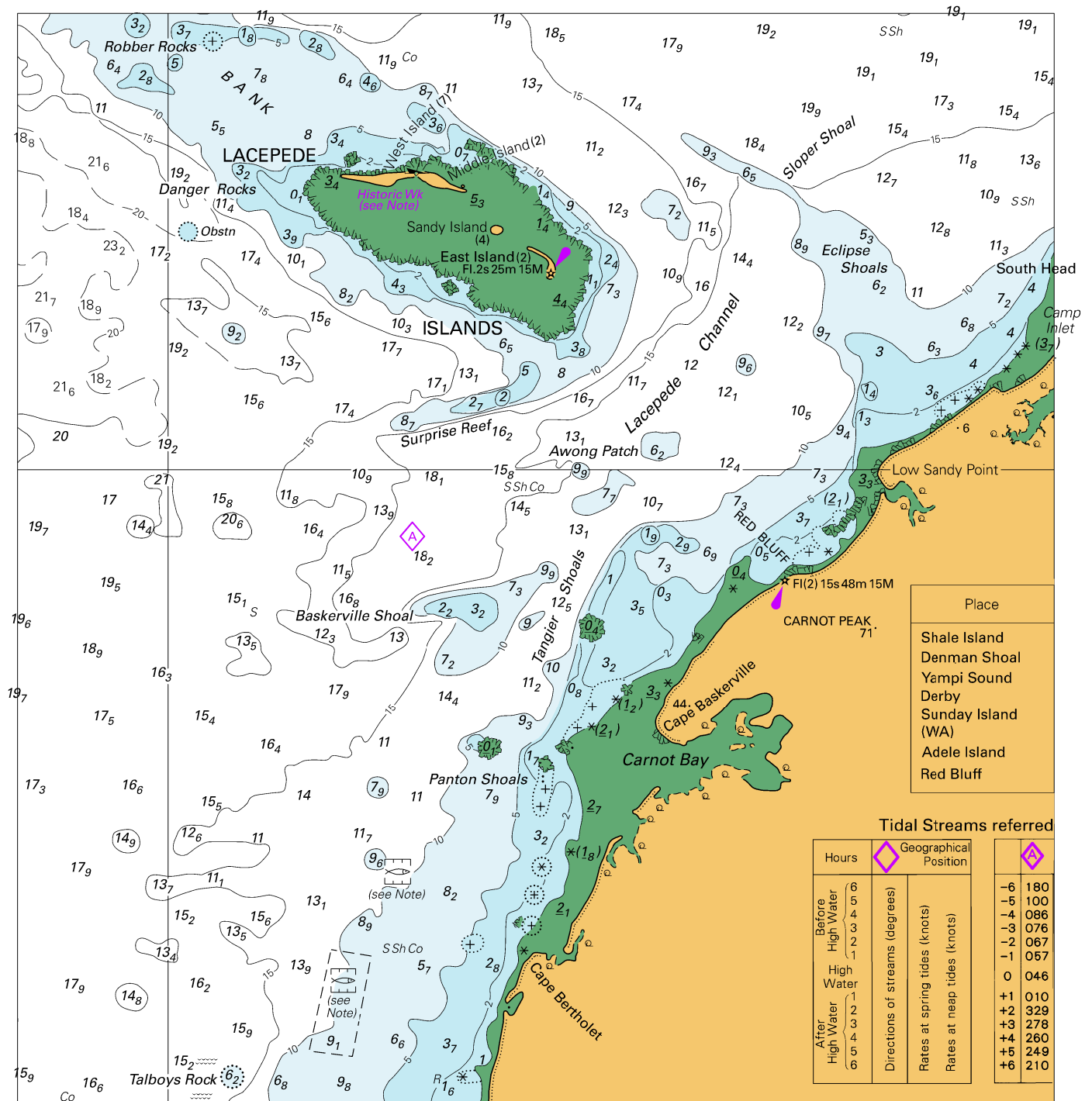


To accompany Australian Notice to Mariners 9/2023



© Commonwealth of Australia 2023

To accompany Australian Notice to Mariners 9/2023



Block for chart Aus 323

© Commonwealth of Australia 2023

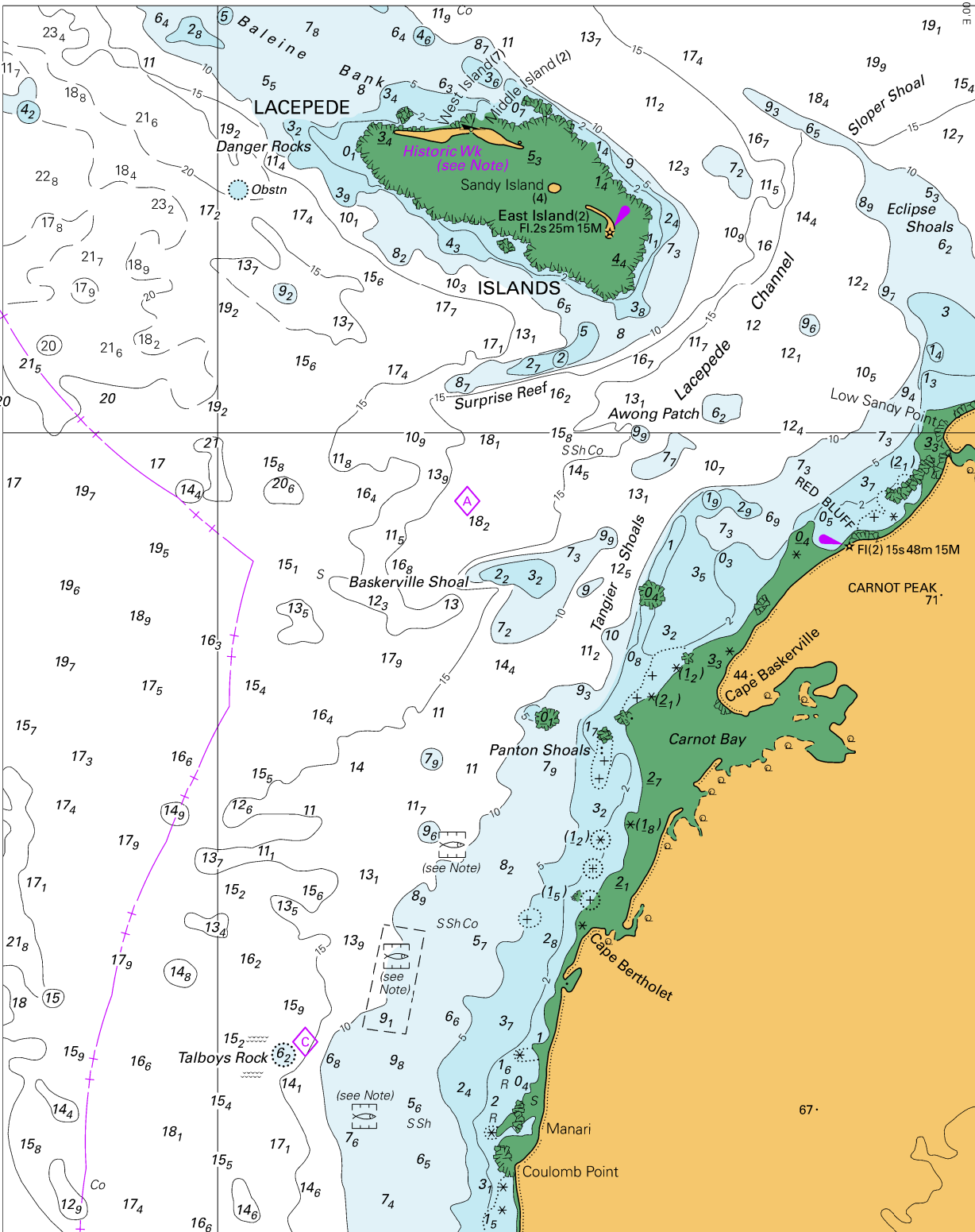
(176.8 x 186.0mm)

Place
Shale Island
Denman Shoal
Yampi Sound
Derby
Sunday Island (WA)
Adele Island
Red Bluff

Tidal Streams referred

Hours	Geographical Position	
Before High Water	(6 5 4 3 2 1)	(-6 -5 -4 -3 -2 -1)
High Water	(1 2 3 4 5 6)	(0 +1 +2 +3 +4 +5 +6)
After High Water	(6 5 4 3 2 1)	(-6 -5 -4 -3 -2 -1)
Directions of streams (degrees)		
Rates at spring tides (knots)		
Rates at neap tides (knots)		

To accompany Australian Notice to Mariners 9/2023

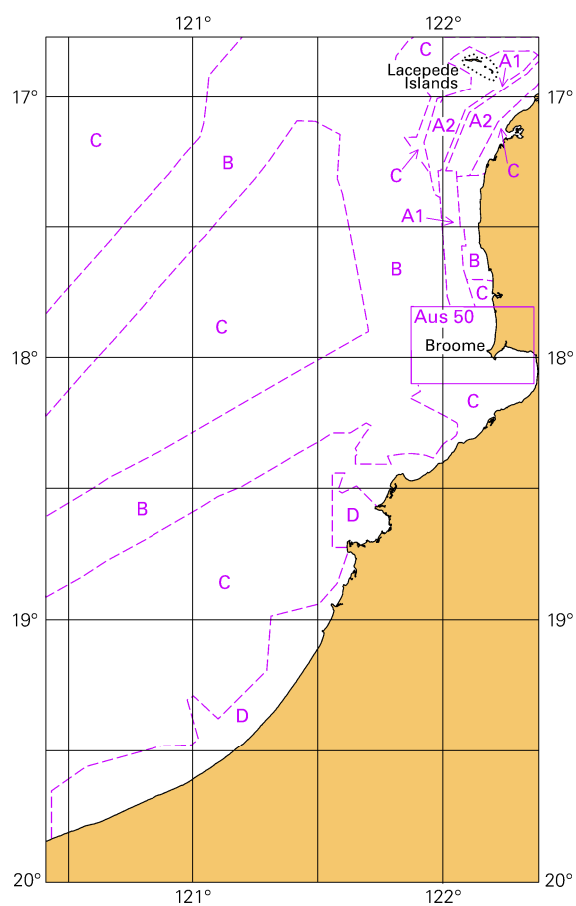


Block for chart Aus 324

© Commonwealth of Australia 2023

(162.2 x 204.3mm)

To accompany Australian Notice to Mariners 9/2023



Block for chart Aus 324

(65.2 x 111.8mm)

© Commonwealth of Australia 2023