



29 April 2022

Edition 9

# AUSTRALIAN NOTICES TO MARINERS

## Notices 342 - 374

Published fortnightly by the Australian Hydrographic Office



Australian Notices to Mariners are the authority for correcting charts and publications published by the Australian Hydrographic Office covering Australia, Papua New Guinea, Solomon Islands, Australian Antarctic Territory and Timor-Leste.

Commodore S.T. DUNNE RAN  
*Hydrographer of Australia*

---

### SECTIONS.

- I. **Australian Notices to Mariners, including blocks and notes.**
- II. **Hydrographic Reports.**

### SUPPLEMENTS.

- I. **Tracings**
  - II. **Cumulative List of Australian Notices to Mariners.**
  - III. **Cumulative List of Temporary and Preliminary Australian Notices to Mariners.**
  - IV. **Temporary and Preliminary Notices in force.**
- 
- 

© Commonwealth of Australia 2022

This work is copyright. Apart from any use permitted under the Copyright Act 1968, no part may be reproduced by any process, adapted, communicated or commercially exploited without prior written permission from The Commonwealth represented by the Australian Hydrographic Office.

## IMPORTANT NOTICE

This edition of Notices to Mariners includes all significant information affecting AHO products which the AHO has become aware of since the last edition. All reasonable efforts have been made to ensure the accuracy and completeness of the information, including third party information, on which these updates are based. The AHO regards third parties from which it receives information as reliable, however the AHO cannot verify all such information and errors may therefore exist. The AHO does not accept liability for errors in third party information.

---

## GENERAL INSTRUCTIONS

The substance of these notices should be inserted on the charts affected.

Bearings are referred to the true compass and are reckoned clockwise from North; those relating to lights are given as seen by an observer from seaward.

Positions quoted in notices relate to WGS84 which is the horizontal datum for all charts produced by the Australian Hydrographic Office.

The range quoted for a light is its nominal range.

Depths are with reference to the chart datum of each chart. Heights are above mean high water springs or mean higher high water, as appropriate.

The capital letter (P) or (T) after the number of any notice denotes a preliminary or temporary notice respectively, which are contained separately at the end of the permanent notices.

---

## REPORTING OF DANGERS

Mariners are particularly requested to notify the AUSTRALIAN HYDROGRAPHIC OFFICE, Locked Bag 8801 Wollongong, NSW 2500 (Fax 02-4223 6599, e-mail [datacentre@hydro.gov.au](mailto:datacentre@hydro.gov.au) or, alternatively by filling in and submitting the [Hydrographic Notes](#) forms located on the web site – [www.hydro.gov.au](http://www.hydro.gov.au)), immediately on the discovery of new dangers or suspected dangers to navigation. For changes or defects in aids to navigation notify AusSAR (Fax 02-6230 6868 or email [rccaus@amsa.gov.au](mailto:rccaus@amsa.gov.au)).

---

## AUTHORISED USE

Copies of Australian notices are available free of charge from the Australian Hydrographic Office (AHO) website ([www.hydro.gov.au](http://www.hydro.gov.au)) and through the eNotices (email) service ([www.hydro.gov.au/enotices/enotices.htm](http://www.hydro.gov.au/enotices/enotices.htm)).

Individual Notices may be copied for the purpose of inserting Notice substance on official charts and publications. Paper copies may be printed by chart agents and distributed to customers on a cost recovery basis. Participating chart agents are listed on the AHO website as providing a 'Paper Notices to Mariners' service ([www.hydro.gov.au/webapps/jsp/agents/agents-list.jsp](http://www.hydro.gov.au/webapps/jsp/agents/agents-list.jsp)). Copies of the notices may not be sold for profit without prior written agreement.

## NUMERICAL INDEX OF NOTICES TO MARINERS

### Edition No 9

| Notices | Aus Chart, INT Chart, ENC Cell, AHP, BA Pubs                                   |
|---------|--|
| 342     | Products - New Charts, New Editions, Withdrawn Charts                          |
| 343     | Aus 130, 722   |
| 344     | Aus 265, 490, 819  |
| 345     | Aus 256, 827   |
| 346     | Aus 256  |
| 347     | Aus 312  |
| 348     | Aus 901  |
| 349     | Aus 73   |
| 350     | Aus 320  |
| 351     | Aus 742, 743, 744  |
| 352(T)  | Aus 489, 806, 807, 808, 4643, INT 643  |
| 353(T)  | Aus 237  |
| 354(T)  | Aus 237, 238   |
| 355(T)  | Aus 834  |
| 356(T)  | Aus 259  |
| 357(T)  | Aus 236  |
| 358(T)  | Aus 830  |
| 359(T)  | Aus 256  |
| 360(T)  | Aus 309, 310, 721, 4721, INT 721   |
| 361(P)  | Aus 312, 313, 321  |
| 362(T)  | Aus 754  |
| 363(T)  | Aus 319, 320, 322, 323, 324, 325, 729, 730, 732, 733, 4721, 4722, INT 721, 722 |
| 364(T)  | Aus 57, 59, 327  |
| 365(T)  | Aus 327, 742, 4070, 4071, INT 70, 71   |
| 366(T)  | Aus 327  |
| 367(T)  | Aus 84, 753, 4725, INT 725   |
| 368(T)  | Aus 327  |
| 369(P)  | Aus 357, 487, 4644, INT 644  |
| 370(T)  | Aus 349, 787   |
| 371(T)  | Aus 144  |
| 372(T)  | Aus 151  |
| 373(T)  | Aus 179, 767, 798, 800   |
| 374(T)  | Aus 171  |

## NUMERICAL INDEX OF CHARTS AFFECTED

### Edition No 9

| Aus Chart | Notices                        |
|-----------|--------------------------------|
| Aus 57    | 364(T)                         |
| Aus 59    | 364(T)                         |
| Aus 73    | 349                            |
| Aus 84    | 367(T)                         |
| Aus 130   | 343                            |
| Aus 144   | 371(T)                         |
| Aus 151   | 372(T)                         |
| Aus 171   | 374(T)                         |
| Aus 179   | 373(T)                         |
| Aus 236   | 357(T)                         |
| Aus 237   | 353(T), 354(T)                 |
| Aus 238   | 354(T)                         |
| Aus 256   | 345, 346, 359(T)               |
| Aus 259   | 356(T)                         |
| Aus 265   | 344                            |
| Aus 309   | 360(T)                         |
| Aus 310   | 360(T)                         |
| Aus 312   | 347, 361(P)                    |
| Aus 313   | 361(P)                         |
| Aus 319   | 363(T)                         |
| Aus 320   | 350, 363(T)                    |
| Aus 321   | 361(P)                         |
| Aus 322   | 363(T)                         |
| Aus 323   | 363(T)                         |
| Aus 324   | 363(T)                         |
| Aus 325   | 363(T)                         |
| Aus 327   | 364(T), 365(T), 366(T), 368(T) |
| Aus 349   | 370(T)                         |
| Aus 357   | 369(P)                         |
| Aus 487   | 369(P)                         |
| Aus 489   | 352(T)                         |
| Aus 490   | 344                            |
| Aus 721   | 360(T)                         |
| Aus 722   | 343                            |
| Aus 729   | 363(T)                         |
| Aus 730   | 363(T)                         |
| Aus 732   | 363(T)                         |
| Aus 733   | 363(T)                         |
| Aus 742   | 351, 365(T)                    |
| Aus 743   | 351                            |
| Aus 744   | 351                            |
| Aus 753   | 367(T)                         |
| Aus 754   | 362(T)                         |
| Aus 767   | 373(T)                         |
| Aus 787   | 370(T)                         |
| Aus 798   | 373(T)                         |
| Aus 800   | 373(T)                         |
| Aus 806   | 352(T)                         |
| Aus 807   | 352(T)                         |
| Aus 808   | 352(T)                         |
| Aus 819   | 344                            |
| Aus 827   | 345                            |
| Aus 830   | 358(T)                         |
| Aus 834   | 355(T)                         |

| Aus Chart | Notices        |
|-----------|----------------|
| Aus 901   | 348            |
| Aus 4070  | 365(T)         |
| Aus 4071  | 365(T)         |
| Aus 4643  | 352(T)         |
| Aus 4644  | 369(P)         |
| Aus 4721  | 360(T), 363(T) |
| Aus 4722  | 363(T)         |
| Aus 4725  | 367(T)         |

| INT Chart | Notices        |
|-----------|----------------|
| INT 70    | 365(T)         |
| INT 71    | 365(T)         |
| INT 643   | 352(T)         |
| INT 644   | 369(P)         |
| INT 721   | 360(T), 363(T) |
| INT 722   | 363(T)         |
| INT 725   | 367(T)         |

**342 AUSTRALIA - Products - New Charts, New Editions, Withdrawn Charts**

Australian Hydrographic Office

**New Charts**

| <i>Chart</i> | <i>Title and Geographical limits</i> | <i>Scale</i> | <i>Publication Date</i> | <i>Remarks</i> |
|--------------|--------------------------------------|--------------|-------------------------|----------------|
| NIL          |                                      |              |                         |                |

**New Electronic Navigation Chart (Aus ENC)**

| <i>Cell Name</i> | <i>Title</i>                         | <i>Publication Date</i> | <i>Remarks</i>               |
|------------------|--------------------------------------|-------------------------|------------------------------|
| AU5ABP01         | Australia - Queensland - Abbot Point | 28 April 2022           | AU5255P0 has been withdrawn. |
| AU5PTL01         | Australia - Queensland - Port Alma   | 28 April 2022           | AU5265P0 has been withdrawn. |

**New Editions and Withdrawn Charts**

| <i>Chart</i> | <i>Title</i> | <i>Scale</i> | <i>Publication Date</i> | <i>Remarks</i> |
|--------------|--------------|--------------|-------------------------|----------------|
| NIL          |              |              |                         |                |

**Chart permanently withdrawn**

Charts listed above as withdrawn no longer meet chart carriage requirements and should be marked as "superseded" and replaced with the new chart/ new edition listed prior to passage through the area covered by the new chart.

When placing orders with a chart agent between notice of forthcoming edition and its publication, mariners should advise whether their order pertains to the current edition or the new edition.

For further details refer to the AHO website at [www.hydro.gov.au](http://www.hydro.gov.au) for new edition and new chart stock arrival information.

**343 AUSTRALIA - Products - New Charts and New Editions to be published shortly**

Australian Hydrographic Office

**New Charts to be published shortly**

| <i>Chart</i> | <i>Title</i> | <i>Scale</i> | <i>Remarks</i> |
|--------------|--------------|--------------|----------------|
| NIL          |              |              |                |

**New Editions to be published shortly**

| <i>Chart</i> | <i>Title</i>  | <i>Scale</i> | <i>Remarks</i>   |
|--------------|---|--------------|--|
| Aus 130      | Australia - South Coast - South Australia - Approaches to Port Adelaide | 1:37 500     | New edition with general updating throughout; including latest bathymetric data. |

**Charts to be withdrawn without replacement 27 May 2022**

| <i>Chart</i>                | <i>Title</i>   | <i>Scale</i> | <i>Remarks</i>   |
|-----------------------------|--|--------------|------------------|
| Aus 722<br><b>Edition 5</b> | Australia - North Coast - Northern Territory - Beagle Gulf and Clarence Strait | 1:150 000    | 19 February 2021 |

**344 AUSTRALIA - QUEENSLAND - Keppel Bay - Depths**

Maritime Safety Queensland

**Aus 265 [1048/2021]**

|        |  |               |                |
|--------|--|---------------|----------------|
| Insert | accompanying block                           | 23° 25'.8 S   | 150° 59'.2 E   |
|        | depth, 9 <sub>8</sub> m, enclosed by contour | 23° 28'.487 S | 150° 57'.609 E |

|         |  |              |               |
|---------|--|--------------|---------------|
| Replace | depth, 9 <sub>5</sub> m, and enclosing contour with depth, 10 <sub>7</sub> m | 23° 28'.14 S | 150° 58'.03 E |
|---------|--|--------------|---------------|

**Aus 490 [10/2022]**

|        |                    |             |              |
|--------|--------------------|-------------|--------------|
| Insert | accompanying block | 23° 16'.0 S | 150° 57'.0 E |
|--------|--------------------|-------------|--------------|

**Aus 819 [1014/2021]**

|        |                    |             |              |
|--------|--------------------|-------------|--------------|
| Insert | accompanying block | 23° 27'.8 S | 150° 58'.8 E |
|--------|--------------------|-------------|--------------|

**345 AUSTRALIA - QUEENSLAND - Townsville - Infrastructure; light buoy**

Maritime Safety Queensland

**Aus 256 [309/2022]**

|        |   |              |               |
|--------|---|--------------|---------------|
| Insert | continuous line, between  | 19° 14'.67 S | 146° 50'.58 E |
|        |   | 19° 14'.63 S | 146° 50'.49 E |
|        | port lateral cylindrical light buoy, <i>Fl.R.2-5s</i> , without topmark | 19° 14'.57 S | 146° 50'.39 E |

**Aus 827 [309/2022]**

|        |                          |              |               |
|--------|--------------------------|--------------|---------------|
| Insert | continuous line, between | 19° 14'.67 S | 146° 50'.58 E |
|        |                          | 19° 14'.63 S | 146° 50'.49 E |

**346 AUSTRALIA - QUEENSLAND - Townsville - Nav aids**

Maritime Safety Queensland

**Aus 256 [345/2022]**

|        |  |              |               |
|--------|--|--------------|---------------|
| Insert | magenta circle, with legend <i>AIS</i> , at light beacon | 19° 11'.25 S | 146° 52'.21 E |
|--------|--|--------------|---------------|

|         |   |              |               |
|---------|---|--------------|---------------|
| Replace | light beacon with port lateral virtual AIS      | 19° 10'.46 S | 146° 52'.53 E |
|         | light beacon with starboard lateral virtual AIS | 19° 11'.74 S | 146° 51'.84 E |
|         | light beacon with starboard lateral virtual AIS | 19° 12'.20 S | 146° 51'.54 E |
|         | light beacon with starboard lateral virtual AIS | 19° 12'.66 S | 146° 51'.24 E |
|         | light beacon with starboard lateral virtual AIS | 19° 13'.12 S | 146° 50'.95 E |
|         | light beacon with starboard lateral virtual AIS | 19° 13'.58 S | 146° 50'.65 E |
|         | light beacon with starboard lateral virtual AIS | 19° 14'.05 S | 146° 50'.35 E |
|         | light beacon with starboard lateral virtual AIS | 19° 14'.58 S | 146° 50'.03 E |

**347 AUSTRALIA - TIMOR SEA - Sahul Banks - Well; pipeline**

Santos

**Aus 312 [936/2021]**

|        |   |              |               |
|--------|---|--------------|---------------|
| Insert | supply pipeline, between  | 11° 06'.45 S | 126° 34'.61 E |
|        |   | 11° 03'.02 S | 126° 37'.03 E |
|        | depth, 109m, enclosed by danger circle with legend, <i>Well</i> | 11° 06'.67 S | 126° 34'.47 E |

**348 TIMOR-LESTE - Dili - Depth**HMAS *Leeuwin***Aus 901 [433/2021]**

|        |  |              |                |
|--------|--|--------------|----------------|
| Insert | depth, 3 <sub>7</sub> m, and extend contour N to enclose | 8° 32'.687 S | 125° 34'.260 E |
|--------|--|--------------|----------------|

**349 AUSTRALIA - WESTERN AUSTRALIA - Carnarvon - Jetty**

Former Notice - 32(T)/2022 is cancelled  
Department of Transport WA

**Aus 73 (Carnarvon) [106/2022]**

|        |                          |               |                |
|--------|--------------------------|---------------|----------------|
| Insert | continuous line, between | 24° 53'.956 S | 113° 39'.018 E |
|        |                          | 24° 53'.958 S | 113° 39'.024 E |
|        |                          | 24° 53'.967 S | 113° 39'.049 E |
|        | continuous line, between | 24° 53'.956 S | 113° 39'.018 E |
|        |                          | 24° 53'.942 S | 113° 39'.032 E |

**350 AUSTRALIA - WESTERN AUSTRALIA - Institut Islands - Depths**

Australian Hydrographic Office

**Aus 320 [313/2022]**

|        |           |             |              |
|--------|-----------|-------------|--------------|
| Delete | depth, 1m | 14° 13'.5 S | 125° 51'.8 E |
|        | depth, 4m | 14° 14'.3 S | 125° 51'.8 E |

**351 AUSTRALIA - WESTERN AUSTRALIA - Montebello Islands to Thevenard Island - Light buoys**

Department of Transport WA

**Aus 742 [1018/2021]**

|        |            |             |              |
|--------|------------|-------------|--------------|
| Delete | light buoy | 20° 24'.0 S | 115° 27'.8 E |
|--------|------------|-------------|--------------|

**Aus 743 [18/2022]**

|        |            |             |              |
|--------|------------|-------------|--------------|
| Delete | light buoy | 21° 25'.1 S | 114° 53'.3 E |
|--------|------------|-------------|--------------|

**Aus 744 [1055/2021]**

|        |            |             |              |
|--------|------------|-------------|--------------|
| Delete | light buoy | 21° 25'.1 S | 114° 53'.3 E |
|--------|------------|-------------|--------------|

**352(T)/2022 AUSTRALIA - NEW SOUTH WALES - Jervis Bay - >>>>ED 9 - Live firing**

Department of Defence 6 Squadron

During the period 10 to 12 May 2022, live firing will be conducted in an area bounded by the following positions:

35° 11'.4 S 150° 41'.6 E  
 34° 30'.4 S 151° 21'.1 E  
 35° 00'.7 S 153° 03'.2 E  
 36° 08'.0 S 152° 39'.0 E  
 36° 46'.1 S 151° 47'.7 E  
 36° 02'.0 S 150° 26'.5 E.

Mariners are advised to navigate with caution and keep well clear of the area.

**Chart temporarily affected - Aus 489 - Aus 806 - Aus 807 - Aus 808 - Aus 4643 (INT 643)**

**353(T)/2022 AUSTRALIA - QUEENSLAND - Brisbane River - Bulwer Island - Exclusion zone removed**

*Former Notice - 232(T)/2022 is cancelled*

Maritime Safety Queensland

Cancel this notice on receipt.

**Chart formerly affected - Aus 237**

**354(T)/2022 AUSTRALIA - QUEENSLAND - Brisbane River - Entrance Channel to South Brisbane Reach - Obstructions**

Maritime Safety Queensland

Due to a severe weather event, submerged obstructions and unusual currents may exist in the Brisbane River from the Entrance Channel (27° 18'.62 S 153° 12'.55 E) to South Brisbane Reach (27° 28'.29 S 153° 01'.22 E).

Mariners are advised to navigate with caution in the area.

**Chart temporarily affected - Aus 237 - Aus 238**

**355(T)/2022 AUSTRALIA - QUEENSLAND - First Three Mile Opening - Light restored**

*Former Notice - 372(T)/2021 is cancelled*

Australian Maritime Safety Authority

Cancel this notice on receipt.

**Chart formerly affected - Aus 834**

**356(T)/2022 AUSTRALIA - QUEENSLAND - Hinchinbrook Channel - Light buoy unlit**

Maritime Safety Queensland Notice 185(T)/2022

The port lateral light buoy, *Q.R No16* (18° 28'.88 S 146° 13'.41 E), is unlit.

**Chart temporarily affected - Aus 259**

**357(T)/2022 AUSTRALIA - QUEENSLAND - Moreton Bay - Macleay Island - Harbour works**

Maritime Safety Queensland Notice 180(T)/2022

Harbour works are in progress at South Moreton Bay Islands Ferry Terminal, 27° 37'.90 S 153° 21'.92 E.

Anchoring is not permitted in the works area. Access to moor and berth at shoreside infrastructure within the area is permitted.

Barges and support vessels are on site and will be lit by special flashing lights.

Mariners are advised to navigate with caution in the area with minimal wash.

**Chart temporarily affected - Aus 236**



**358(T)/2022 AUSTRALIA - QUEENSLAND - Satellite Reef - Wreck**  
Maritime Safety Queensland

A semi submerged wreck exists in position 16° 29'.19 S 145° 40'.93 E.

Mariners are advised to navigate with caution in the area.

**Chart temporarily affected - Aus 830**

**359(T)/2022 AUSTRALIA - QUEENSLAND - Townsville - Channel widening works; light**

*Former Notice - 383(T)/2021 is cancelled*

Maritime Safety Queensland Notice 122(T)/2021, 125(T)/2021, 144(T)/2021

Barge *PMG181* and support vessels are conducting works to widen the channel as part of the Townsville Port Expansion Project.

A light, Q, exists in position 19° 14'.66 S 146° 49'.97 E.

Mariners are advised to navigate with caution in the area.

**Chart temporarily affected - Aus 256**

**360(T)/2022 AUSTRALIA - NORTHERN TERRITORY - Melville Island - Seismic survey northwards**

Woodside Energy Ltd

On or about 6 May 2022, vessel *BGP Explorer*, with a 9000m towed array, and support vessel *Pedro-1* are conducting a seismic survey in an area bounded by the following positions:

9° 13'.92 S 131° 25'.99 E  
9° 31'.24 S 131° 26'.00 E  
10° 00'.76 S 131° 18'.63 E  
10° 00'.77 S 131° 08'.41 E  
10° 35'.97 S 130° 54'.44 E  
10° 45'.76 S 130° 44'.65 E  
10° 45'.73 S 129° 43'.86 E  
9° 40'.03 S 130° 02'.22 E  
9° 25'.48 S 130° 16'.68 E.

Mariners are advised to navigate with caution in the area. 3M clearance requested.

**Chart temporarily affected - Aus 309 - Aus 310 - Aus 721 - Aus 4721 (INT 721)**

**361(P)/2022 TIMOR-LESTE - Dili - Shoaling**

HMAS *Leeuwin*

Latest survey indicates shoaler depths than those charted may exist in an area bounded by the coast and the following positions:

8° 33'.82 S 125° 23'.74 E  
8° 32'.93 S 125° 23'.67 E  
8° 31'.38 S 125° 31'.30 E  
8° 32'.69 S 125° 31'.18 E.

Mariners are advised to navigate with caution in the area.

Charts will be updated in due course.

**Chart which will be affected - Aus 312 - Aus 313 - Aus 321**

**362(T)/2022 AUSTRALIA - WESTERN AUSTRALIA - Alkimos Reef - Drilling operations completed**

*Former Notice - 128(T)/2022 is cancelled*

Department of Transport WA

Cancel this notice on receipt.

**Chart formerly affected - Aus 754**

**363(T)/2022 AUSTRALIA - WESTERN AUSTRALIA - Browse Island to Cape Latouche Treville - Survey operations completed**

*Former Notice* - 1071(T)/2021 is cancelled  
INPEX , Woodside Energy Ltd

Cancel this notice on receipt.

**Chart formerly affected - Aus 319 - Aus 320 - Aus 322 - Aus 323 - Aus 324 - Aus 325 - Aus 729 - Aus 730 - Aus 732 - Aus 733 - Aus 4721 (INT 721) - Aus 4722 (INT 722)**

**364(T)/2022 AUSTRALIA - WESTERN AUSTRALIA - Dampier - Scientific instruments**

Pilbara Ports Authority D03/2022(T)

Special light buoys, *Fl.Y.1-5s*, exist in the following positions:

20° 40'.26 S 116° 39'.30 E  
20° 38'.40 S 116° 44'.16 E  
20° 37'.32 S 116° 44'.76 E  
20° 32'.16 S 116° 46'.68 E  
20° 28'.26 S 116° 47'.82 E  
20° 31'.02 S 116° 38'.76 E  
20° 28'.14 S 116° 42'.30 E  
20° 30'.72 S 116° 47'.10 E  
20° 22'.74 S 116° 47'.52 E.

**Chart temporarily affected - Aus 57 - Aus 59 - Aus 327**

**365(T)/2022 AUSTRALIA - WESTERN AUSTRALIA - Dampier Archipelago - Drill rig eastwards moved**

*Former Notice* - 33(T)/2022 is cancelled  
Sapura Energy

Cancel this notice on receipt.

**Chart formerly affected - Aus 327 - Aus 742 - Aus 4070 (INT 70) - Aus 4071 (INT 71)**

**366(T)/2022 AUSTRALIA - WESTERN AUSTRALIA - Dampier Archipelago - Scientific instruments northeastwards**

O2 Marine

Scientific instruments exist on the seabed in positions 20° 17'.97 S 116° 53'.84 E and 20° 17'.89 S 116° 51'.58 E.

Mariners are advised to navigate with caution in the area

**Chart temporarily affected - Aus 327**

**367(T)/2022 AUSTRALIA - WESTERN AUSTRALIA - Escape Island - Light relit**

*Former Notice* - 332(T)/2022 is cancelled  
Department of Transport WA

Cancel this notice on receipt.

**Chart formerly affected - Aus 84 - Aus 753 - Aus 4725 (INT 725)**

**368(T)/2022 AUSTRALIA - WESTERN AUSTRALIA - Glomar Shoal - Drill rig; restricted area northwestwards**

Sapura Energy , National Offshore Petroleum Safety and Environmental Management Authority

Drill rig *Diamond Ocean Apex* is conducting drilling operations in position 19° 19'.04 S 116° 21'.45 E.

A restricted area, with radius 500m, exists around the drill rig.

**Chart temporarily affected - Aus 327**

**369(P)/2022 AUSTRALIA - VICTORIA - Ninety Mile Beach - Traffic separation scheme southwestwards**

Australian Maritime Safety Authority

Decommissioning of oil and gas infrastructure will take place at Blackback Prod Well (38° 32'.42 S 148° 33'.24 E), Gudgeon Well (38° 30'.82 S 148° 28'.17 E) and Terakihi Well (38° 30'.27 S 148° 32'.89 E).

New temporary shipping fairways and a separation zone have been established to keep transiting ships away from decommissioning activities. The new shipping fairways and separation zone are bound by the following positions:

|                      |               |                 |
|----------------------|---------------|-----------------|
| Northeast bound lane | 38° 36'.941 S | 148° 45'.842 E  |
|                      | 38° 39'.507 S | 148° 48'.047 E  |
|                      | 38° 44'.600 S | 148° 23'.000 E  |
|                      | 38° 42'.034 S | 148° 20'.795 E. |
| Southwest bound lane | 38° 33'.407 S | 148° 42'.545 E  |
|                      | 38° 35'.750 S | 148° 44'.746 E  |
|                      | 38° 40'.844 S | 148° 19'.699 E  |
|                      | 38° 38'.500 S | 148° 17'.500 E. |
| Separation zone      | 38° 35'.750 S | 148° 44'.746 E  |
|                      | 38° 36'.941 S | 148° 45'.842 E  |
|                      | 38° 42'.034 S | 148° 20'.795 E  |
|                      | 38° 40'.844 S | 148° 19'.699 E. |

The fairways and separation zone come into effect on 1 August 2022 at 0000 UTC and will remain in place until further notice.

Mariners should follow the appropriate traffic lane and navigate in the general direction of traffic flow for that lane. They should, as far as practicable, keep clear of the separation zone.

Due to an increased risk of collision, particularly with vessels that may be restricted in their ability to manoeuvre, mariners should keep a good look out and take early action to avoid collisions.

**Chart which will be affected - Aus 357 - Aus 487 - Aus 4644 (INT 644)****370(T)/2022 AUSTRALIA - VICTORIA - Port Campbell - Drill rig southwards**

Former Notice - 82(T)/2022 is cancelled

MODU *Ocean Onyx*

Drill rig *Ocean Onyx* is conducting drilling operations in position 39° 12'.28 S 142° 51'.56 E.

**Chart temporarily affected - Aus 349 - Aus 787****371(T)/2022 AUSTRALIA - VICTORIA - Port Phillip - The Rip - Virtual AIS**

Ports Victoria Notice 148(T)/2022

Virtual AIS exist in the following positions:

38° 17'.49 S 144° 39'.02 E

38° 17'.78 S 144° 38'.33 E

38° 18'.20 S 144° 38'.00 E.

**Chart temporarily affected - Aus 144****372(T)/2022 AUSTRALIA - VICTORIA - Western Port - North Arm - Light buoy off station**

Ports Victoria Notice 154/2022

The special light buoy, *F(2)Y.5s MS4* (38° 17'.65 S 145° 14'.08 E), is off station.

**Chart temporarily affected - Aus 151**

**373(T)/2022 AUSTRALIA - TASMANIA - Banks Strait - Survey operations completed**

*Former Notice* - 42(T)/2022 is cancelled  
iXblue Pty Ltd

Cancel this notice on receipt.

**Chart formerly affected - Aus 179 - Aus 767 - Aus 798 - Aus 800**

**374(T)/2022 AUSTRALIA - TASMANIA - Hobart - New Town Bay - Wreck**

Marine and Safety Tasmania Notice M144(T)/2022

A wreck exists in position 42° 50'.65 S 147° 19'.10 E.

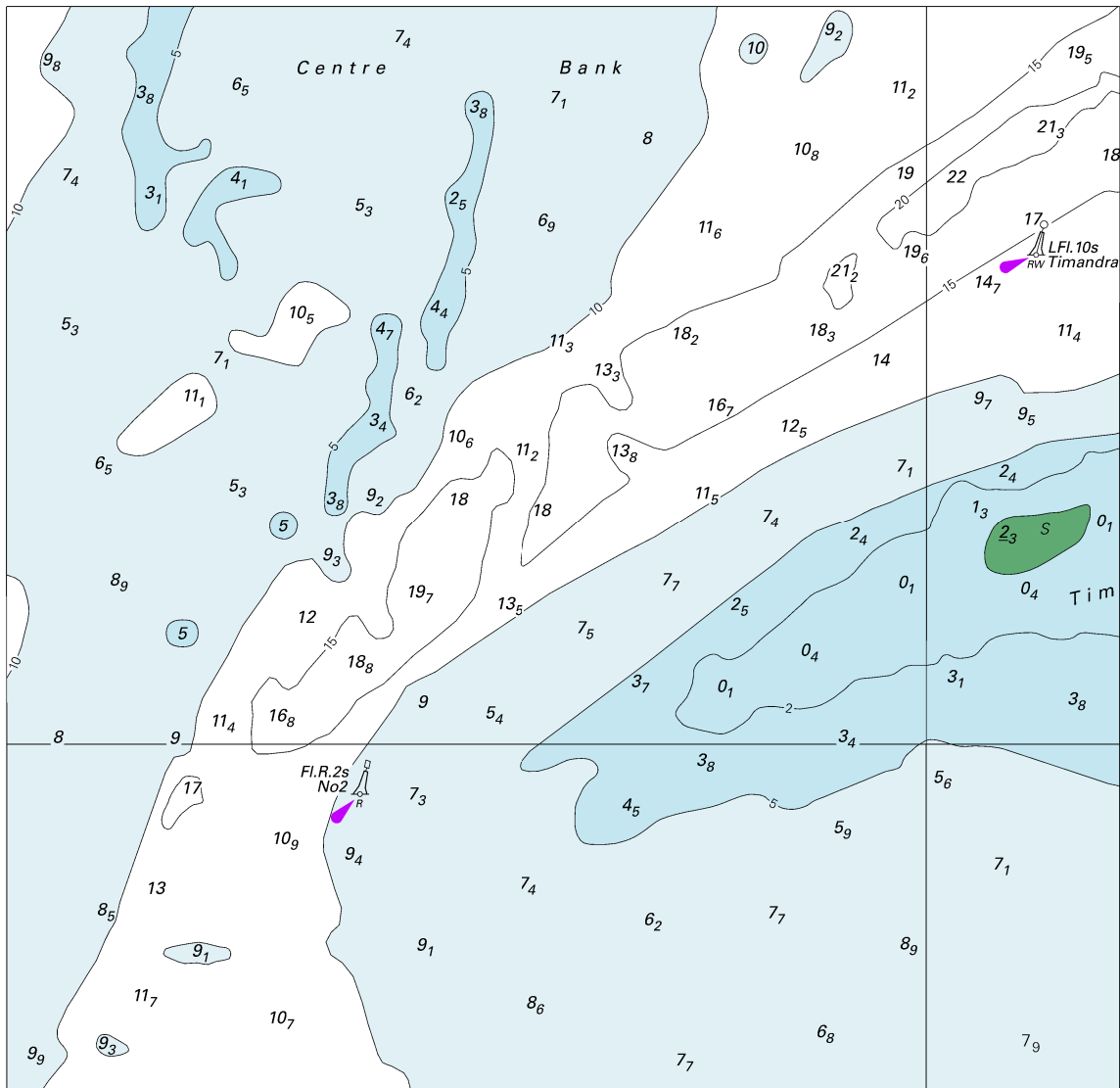
Mariners are advised to navigate with caution in the area.

**Chart temporarily affected - Aus 171**

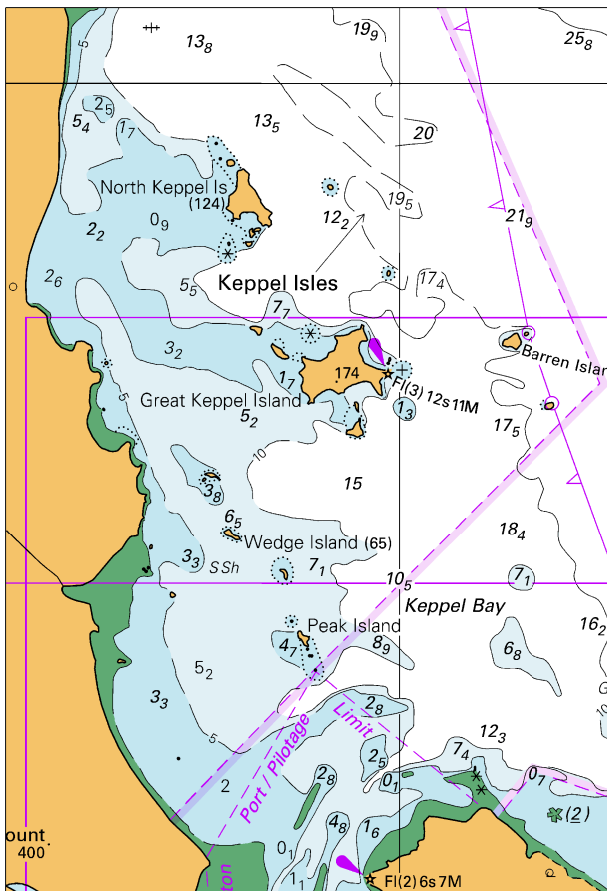
II

**HYDROGRAPHIC REPORTS**

NIL



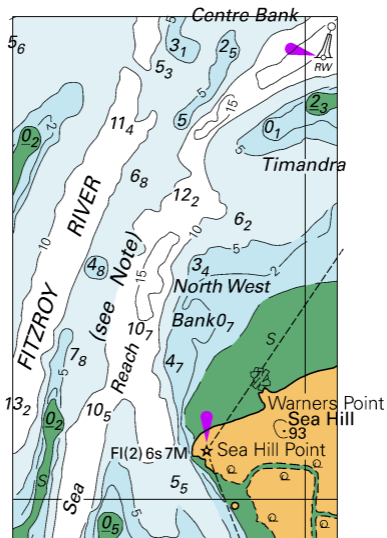
To accompany Australian Notice to Mariners 344/2022



Block for chart Aus 490

(79.7 x 117.0mm)

To accompany Australian Notice to Mariners 344/2022



Block for chart Aus 819 (42.9 x 69.1mm)

© Commonwealth of Australia 2022