



30 September 2022

Edition 20

AUSTRALIAN NOTICES TO MARINERS

Notices 764 - 808

Published fortnightly by the Australian Hydrographic Office



Australian Notices to Mariners are the authority for correcting charts and publications published by the Australian Hydrographic Office covering Australia, Papua New Guinea, Solomon Islands, Australian Antarctic Territory and Timor-Leste.

Commodore S.T. DUNNE RAN
Hydrographer of Australia

SECTIONS.

- I. **Australian Notices to Mariners, including blocks and notes.**
- II. **Hydrographic Reports.**

SUPPLEMENTS.

- I. **Tracings**
 - II. **Cumulative List of Australian Notices to Mariners.**
 - III. **Cumulative List of Temporary and Preliminary Australian Notices to Mariners.**
 - IV. **Temporary and Preliminary Notices in force.**
-
-

© Commonwealth of Australia 2022

This work is copyright. Apart from any use permitted under the Copyright Act 1968, no part may be reproduced by any process, adapted, communicated or commercially exploited without prior written permission from The Commonwealth represented by the Australian Hydrographic Office.

IMPORTANT NOTICE

This edition of Notices to Mariners includes all significant information affecting AHO products which the AHO has become aware of since the last edition. All reasonable efforts have been made to ensure the accuracy and completeness of the information, including third party information, on which these updates are based. The AHO regards third parties from which it receives information as reliable, however the AHO cannot verify all such information and errors may therefore exist. The AHO does not accept liability for errors in third party information.

GENERAL INSTRUCTIONS

The substance of these notices should be inserted on the charts affected.

Bearings are referred to the true compass and are reckoned clockwise from North; those relating to lights are given as seen by an observer from seaward.

Positions quoted in notices relate to WGS84 which is the horizontal datum for all charts produced by the Australian Hydrographic Office.

The range quoted for a light is its nominal range.

Depths are with reference to the chart datum of each chart. Heights are above mean high water springs or mean higher high water, as appropriate.

The capital letter (P) or (T) after the number of any notice denotes a preliminary or temporary notice respectively, which are contained separately at the end of the permanent notices.

REPORTING OF DANGERS

Mariners are particularly requested to notify the AUSTRALIAN HYDROGRAPHIC OFFICE, Locked Bag 8801 Wollongong, NSW 2500 (Fax 02-4223 6599, e-mail datacentre@hydro.gov.au or, alternatively by filling in and submitting the [Hydrographic Notes](#) forms located on the web site – www.hydro.gov.au), immediately on the discovery of new dangers or suspected dangers to navigation. For changes or defects in aids to navigation notify AusSAR (Fax 02-6230 6868 or email rccaus@amsa.gov.au).

AUTHORISED USE

Copies of Australian notices are available free of charge from the Australian Hydrographic Office (AHO) website (www.hydro.gov.au) and through the eNotices (email) service (www.hydro.gov.au/enotices/enotices.htm).

Individual Notices may be copied for the purpose of inserting Notice substance on official charts and publications. Paper copies may be printed by chart agents and distributed to customers on a cost recovery basis. Participating chart agents are listed on the AHO website as providing a 'Paper Notices to Mariners' service (www.hydro.gov.au/webapps/jsp/agents/agents-list.jsp). Copies of the notices may not be sold for profit without prior written agreement.

NUMERICAL INDEX OF NOTICES TO MARINERS

Edition No 20

Notices	Aus Chart, INT Chart, ENC Cell, AHP, BA Pubs
764	Aus 4603, 4604, 4620, 4621, 4623, 4634, 4720, 4721, INT 603, 604, 620, 621, 623, 634, 720, 721
765	Aus 72, 195, 235, 238, 720, 721, 812
766	Summer time
767	Aus 609
768	Aus 237
769	Aus 833
770	Aus 817
771	Aus 834
772	Aus 818
773	Aus 292, 835
774	Aus 310
775	Aus 754
776	Aus 118
777	Aus 781
778	Aus 485, 776
779	Aus 144
780	Aus 790
781	SLB 101
782(T)	Aus 808, 4620, 4621, 4623, 4634, 4643, INT 620, 621, 623, 634, 643
783(T)	Aus 195
784(T)	Aus 235, 809, 4601, 4604, 4622, 4623, 4634, 4643, INT 601, 604, 622, 623, 634, 643
785(T)	Aus 4604, INT 604
786(T)	Aus 4623, INT 623
787(T)	Aus 236
788(P)	Aus 614
789(T)	Aus 614, 4620, 4621, INT 620, 621
790(T)	Aus 4604, INT 604
791(T)	Aus 4604, 4634, INT 604, 634
792(T)	Aus 4604, INT 604, PNG 507
793(T)	Aus 4604, 4620, 4621, INT 604, 620, 621, PNG 507
794(T)	Aus 4622, INT 622, PNG 386, 521, 522, 523
795(T)	Aus 4620, 4621, 4622, INT 620, 621, 622, PNG 386, 521, 522, 523
796(T)	Aus 18, 20, 26, 309, 310, 315, 316, 714, 719, 720, 721, 4721, INT 721
797(T)	Aus 328, 742
798(T)	Aus 327, 742
799(T)	Aus 755
800(T)	Aus 755
801(T)	Aus 328, 329, 744, 745, 4708, 4723, 4725, INT 708, 723, 725
802(T)	Aus 343, 485, 780
803(T)	Aus 143, 144, 788
804(T)	Aus 151
805(T)	SLB 304
806(T)	Aus 4623, 4634, INT 623, 634, SLB 304
807(T)	Aus 4604, INT 604, SLB 201, 304
808(T)	Aus 4604, 4623, 4634, INT 604, 623, 634, SLB 201, 304

NUMERICAL INDEX OF CHARTS AFFECTED

Edition No 20

Aus Chart	Notices
Aus 18	796(T)
Aus 20	796(T)
Aus 26	796(T)
Aus 72	765
Aus 118	776
Aus 143	803(T)
Aus 144	779, 803(T)
Aus 151	804(T)
Aus 195	765, 783(T)
Aus 235	765, 784(T)
Aus 236	787(T)
Aus 237	768
Aus 238	765
Aus 292	773
Aus 309	796(T)
Aus 310	774, 796(T)
Aus 315	796(T)
Aus 316	796(T)
Aus 327	798(T)
Aus 328	797(T), 801(T)
Aus 329	801(T)
Aus 343	802(T)
Aus 485	778, 802(T)
Aus 609	767
Aus 614	788(P), 789(T)
Aus 714	796(T)
Aus 719	796(T)
Aus 720	765, 796(T)
Aus 721	765, 796(T)
Aus 742	797(T), 798(T)
Aus 744	801(T)
Aus 745	801(T)
Aus 754	775
Aus 755	799(T), 800(T)
Aus 776	778
Aus 780	802(T)
Aus 781	777
Aus 788	803(T)
Aus 790	780
Aus 808	782(T)
Aus 809	784(T)
Aus 812	765
Aus 817	770
Aus 818	772
Aus 833	769
Aus 834	771
Aus 835	773
Aus 4601	784(T)
Aus 4603	764
Aus 4604	764, 784(T), 785(T), 790(T), 791(T), 792(T), 793(T), 807(T), 808(T)
Aus 4620	764, 782(T), 789(T), 793(T), 795(T)
Aus 4621	764, 782(T), 789(T), 793(T), 795(T)
Aus 4622	784(T), 794(T), 795(T)
Aus 4623	764, 782(T), 784(T), 786(T), 806(T), 808(T)

Aus Chart	Notices
Aus 4634	764, 782(T), 784(T), 791(T), 806(T), 808(T)
Aus 4643	782(T), 784(T)
Aus 4708	801(T)
Aus 4720	764
Aus 4721	764, 796(T)
Aus 4723	801(T)
Aus 4725	801(T)
PNG 386	794(T), 795(T)
PNG 507	792(T), 793(T)
PNG 521	794(T), 795(T)
PNG 522	794(T), 795(T)
PNG 523	794(T), 795(T)
SLB 101	781
SLB 201	807(T), 808(T)
SLB 304	805(T), 806(T), 807(T), 808(T)

INT Chart	Notices
INT 601	784(T)
INT 603	764
INT 604	764, 784(T), 785(T), 790(T), 791(T), 792(T), 793(T), 807(T), 808(T)
INT 620	764, 782(T), 789(T), 793(T), 795(T)
INT 621	764, 782(T), 789(T), 793(T), 795(T)
INT 622	784(T), 794(T), 795(T)
INT 623	764, 782(T), 784(T), 786(T), 806(T), 808(T)
INT 634	764, 782(T), 784(T), 791(T), 806(T), 808(T)
INT 643	782(T), 784(T)
INT 708	801(T)
INT 720	764
INT 721	764, 796(T)
INT 723	801(T)
INT 725	801(T)

764 AUSTRALIA - Products - New Charts, New Editions, Withdrawn Charts

UKHO , Australian Hydrographic Office

New Charts

<i>Chart</i>	<i>Title and Geographical limits</i>	<i>Scale</i>	<i>Publication Date</i>	<i>Remarks</i>
NIL				

New Electronic Navigation Chart (Aus ENC)

<i>Cell Name</i>	<i>Title</i>	<i>Publication Date</i>	<i>Remarks</i>
NIL			

New Editions and Withdrawn Charts

<i>Chart</i>	<i>Title</i>	<i>Scale</i>	<i>Publication Date</i>	<i>Remarks</i>
Aus 4603 (INT 603) (Edition 7)	Indian Ocean - Australia - North Coast and adjacent waters	1:3 500 000	30 September 2022	New edition with general updating throughout; including latest bathymetric data. Produced with blue contours. Chart Aus 4603 Edition 6 dated 6 June 2008 is now superseded and must be withdrawn from use.

Aus 4604 (INT 604) (Edition 8)	South Pacific Ocean - Coral and Solomon Seas and adjacent seas	1:3 500 000	30 September 2022	New edition with general updating throughout; including latest bathymetric data. Produced with blue contours. Chart Aus 4604 Edition 7 dated 6 June 2008 is now superseded and must be withdrawn from use.
---	--	-------------	-------------------	--

Charts withdrawn without replacement

<i>Chart</i>	<i>Title</i>	<i>Scale</i>	<i>Remarks</i>
Aus 4620 (INT 620) Edition 7	Australia - Papua New Guinea - Percy Isles to Booby Island including Gulf of Papua	1:1 500 000	18 December 2015 Paper chart rationalisation.
Aus 4621 (INT 621) Edition 6	Coral and Solomon Seas - Mackay to Solomon Islands	1:1 500 000	22 September 2017 Paper chart rationalisation.
Aus 4623 (INT 623) Edition 1	South Pacific Ocean - Solomon Islands - Solomon Islands to Kosrae Island	1:1 500 000	11 August 2017 Paper chart rationalisation.
Aus 4634 (INT 634) Edition 1	South Pacific Ocean - Solomon Islands - Frederick Reefs to Solomon Islands	1:1 500 000	11 August 2017 Paper chart rationalisation.
Aus 4720 (INT 720) Edition 3	Australia - North Coast - Booby Island to Cape Wessel including Gulf of Carpentaria	1:1 500 000	6 June 2008 Paper chart rationalisation.
Aus 4721 (INT 721) Edition 2	Australia - North Coast - Cape Wessel to Adele Island including Adjacent Waters	1:1 500 000	6 June 2008 Paper chart rationalisation.

Admiralty publication**Erratum***NP204-23*

An incorrect publication date for NP204-23 of 15 September 2022 was shown in ANTM Edition 19/2022 notice 707/2022. The correct publication date should read 1 September 2022.

Chart permanently withdrawn

Charts listed above as withdrawn no longer meet chart carriage requirements and should be marked as "superseded" and replaced with the new chart/ new edition listed prior to passage through the area covered by the new chart.

When placing orders with a chart agent between notice of forthcoming edition and its publication, mariners should advise whether their order pertains to the current edition or the new edition.

For further details refer to the AHO website at www.hydro.gov.au for new edition and new chart stock arrival information.

765 AUSTRALIA - Products - New Charts and New Editions to be published shortly

Australian Hydrographic Office

New Charts to be published shortly

Chart	Title	Scale	Remarks
NIL			

New Editions to be published shortly

Chart	Title	Scale	Remarks
Aus 195	Australia - East Coast - New South Wales - Approaches to Port Kembla	1:25 000	New edition with general updating throughout; including new bathymetric data.
Aus 721	Australia - North Coast - Northern Territory - Port Essington to Snake Bay	1:150 000	New edition with general updating throughout; including new bathymetric data.
Aus 720	Australia - North Coast - Northern Territory - Van Diemen Gulf	1:150 000	New edition with general updating throughout; including new bathymetric data.
Aus 812	Australia - East Coast - New South Wales - Nambucca Heads to Clarence River	1:150 000	New edition with general updating throughout; including new bathymetric data.

Charts to be withdrawn without replacement 14 October 2022

Chart	Title	Scale	Remarks
Aus 235 Edition 6	Australia - East Coast - Queensland - Approaches to Moreton Bay Plan: Mooloolaba Harbour	1:75 000 1:10 000	10 February 2017 Paper chart rationalisation.
Aus 238 Edition 6	Australia - East Coast - Queensland - Brisbane River - Lytton Reach to Victoria Bridge Plans: South Brisbane Reach Town Reach and Shafston Reach Bulimba Reach Hamilton Reach	1:12 500 1:5 000 1:5 000 1:7 500 1:7 500	31 May 2013 Paper chart rationalisation.

Charts to be withdrawn without replacement 2 December 2022

Aus 72 Edition 1	Australia - West Coast - Western Australia - Plans in Western Australia (Sheet 3) Plans: Norwegian Bay and Point Cloates Mauds Landing Point Murat Wharf Exmouth Boat Harbour	 1:50 000 1:37 500 1:12 500 1:10 000	26 August 2011 Paper chart rationalisation.
----------------------------	--	--	--

766 AUSTRALIA - Summer time

Australian Government

Clocks will be wound forward one hour at 0200 local time on 2 OCT 2022 in the Australian Capital Territory, New South Wales, South Australia, Victoria and Tasmania.

No changes will be made in Queensland, Northern Territory and Western Australia.

767 AUSTRALIA - TASMAN SEA - Norfolk Island - Point Vincent - Depths

iXblue Pty Ltd

Aus 609 (Norfolk and Phillip Islands) [NE 14/6/2019]

Insert	depth, 15 _g m, enclosed by contour	28° 58'.311 S	167° 54'.640 E
	depth, 14 _g m, enclosed by contour	28° 58'.620 S	167° 54'.771 E
	depth, 11 _g m, enclosed by contour	28° 58'.871 S	167° 54'.572 E

768 AUSTRALIA - QUEENSLAND - Brisbane River - Boat Passage - Depths

Port of Brisbane Pty Ltd

Aus 237 [8/2022]

Insert	depth, 2 ₁ m	27° 24'.047 S	153° 09'.416 E
Replace	depth, 2 ₈ m, with depth, 2 ₄ m	27° 24'.05 S	153° 09'.54 E
Delete	depth, 2 ₇ m	27° 24'.06 S	153° 09'.43 E

769 AUSTRALIA - QUEENSLAND - Great Barrier Reef - Wharton Reef - Light

Australian Maritime Safety Authority Final ATH 15/2022

Aus 833 [551/2021]

Amend	light range to 9/8M	14° 07'.5 S	144° 00'.5 E
-------	---------------------	-------------	--------------

770 AUSTRALIA - QUEENSLAND - Hervey Bay - Burrum River - Depths

Maritime Safety Queensland

Aus 817 [679/2022]

Insert	accompanying block	25° 11'.3 S	152° 36'.2 E
--------	--------------------	-------------	--------------

771 AUSTRALIA - QUEENSLAND - Robin Reef - Light

Australian Maritime Safety Authority

Aus 834 [424/2021]

Amend	light range to 11/9M	12° 52'.7 S	143° 41'.8 E
-------	----------------------	-------------	--------------

772 AUSTRALIA - QUEENSLAND - Round Hill Head - Estuary and River Entrance

Maritime Safety Queensland Notice 432(T)/2022

*Note: position of existing chart notes may vary on certain charts.***Aus 818 [679/2022]**

Insert	legend, <i>Estuary and River Entrances</i> (see Note), centred on	24° 08'.2 S	151° 54'.4 E
	accompanying chart note, ESTUARY AND RIVER ENTRANCES	24° 33'.0 S	151° 56'.0 E

773 AUSTRALIA - QUEENSLAND - Shelburne Bay to Mount Adolphus Islands - Nomenclature

Australian Hydrographic Office

Aus 292 [555/2022]

Delete	name, Nigger Head	10° 37'.0 S	142° 38'.2 E
--------	-------------------	-------------	--------------

Aus 835 [931/2021]

Delete	name, Nigger Head Reef	11° 48'.4 S	142° 57'.0 E
--------	------------------------	-------------	--------------

774 AUSTRALIA - TIMOR SEA - Evans Shoal - Depth eastwardsHMAS *Collins***Aus 310 [520/2022]**

Insert	depth, 50m, enclosed by contour	9° 51'.25 S	129° 49'.70 E
--------	---------------------------------	-------------	---------------

775	AUSTRALIA - WESTERN AUSTRALIA - Ocean Reef Boat Harbour to Hillarys Boat Harbour - Nav aids		
Department of Transport WA			
Aus 754	[384/2022]		
Insert	accompanying block	31° 47'.5 S	115° 43'.0 E
776	AUSTRALIA - WESTERN AUSTRALIA - Torndirrup National Park - Nomenclature		
Australian Hydrographic Office			
Aus 118	[262/2022]		
Delete	name, Niggerhead Rock	35° 05'.7 S	117° 55'.0 E
777	AUSTRALIA - SOUTH AUSTRALIA - Port Stanvac - Curlew Point - Artificial reef		
HydroSurvey Australia			
Aus 781	[653/2022]		
Amend	fish haven minimum depth to 7 ₇ m	35° 07'.8 S	138° 27'.6 E
778	AUSTRALIA - SOUTH AUSTRALIA - Yorke Peninsula - The Pines - Light beacon; light sectors		
Department for Infrastructure and Transport SA Notice 31/2022			
Aus 485	[605/2022]		
Amend	light beacon to <i>Fl.8M</i>	34° 53'.2 S	137° 12'.0 E
Aus 776	[720/2022]		
Amend	light beacon to <i>Fl.3s 8M</i>	34° 53'.2 S	137° 12'.0 E
Delete	light sectors and legends emanating from light beacon	34° 53'.2 S	137° 12'.0 E
779	AUSTRALIA - VICTORIA - Port Phillip - The Rip - Virtual AIS		
<i>Former Notice - 371(T)/2022 is cancelled</i>			
Ports Victoria Notice 297/2022			
Aus 144	[481/2022]		
Insert	special virtual AIS	38° 17'.49 S	144° 39'.02 E
	special virtual AIS	38° 17'.78 S	144° 38'.33 E
	special virtual AIS	38° 18'.20 S	144° 38'.00 E
780	AUSTRALIA - TASMANIA - Trefoil Island - Nomenclature		
Australian Hydrographic Office			
Aus 790	[446/2022]		
Delete	name, Niggerhead Rock	40° 37'.2 S	144° 40'.0 E
781	SOLOMON ISLANDS - Honiara - Light buoys		
Solomon Islands Maritime Authority			
SLB 101 (Lungga Roads)	[723/2022]		
Insert	north cardinal pillar light buoy, Q, with topmark	9° 25'.819 S	159° 57'.945 E
SLB 101 (Honiara)	[723/2022]		
Insert	north cardinal pillar light buoy, Q, with topmark	9° 25'.819 S	159° 57'.945 E
	out of position isolated danger spar light buoy, <i>Fl(2)10s</i> , without topmark	9° 25'.889 S	159° 57'.755 E
Delete	depth, 16 ₄ m	9° 25'.82 S	159° 57'.94 E

782(T)/2022 AUSTRALIA - NEW SOUTH WALES - PAPUA NEW GUINEA - SOLOMON ISLANDS - Submarine cable charted

Former Notice - 661(P)/2022 is cancelled
33 Below Pty Ltd

Cancel this notice on receipt.

Chart formerly affected - Aus 808 - Aus 4620 (INT 620) - Aus 4621 (INT 621) - Aus 4623 (INT 623) - Aus 4634 (INT 634) - Aus 4643 (INT 643)

783(T)/2022 AUSTRALIA - NEW SOUTH WALES - Port Kembla - Drilling operations completed

Former Notice - 593(T)/2021 is cancelled
Port Authority of New South Wales

Cancel this notice on receipt.

Chart formerly affected - Aus 195

784(T)/2022 AUSTRALIA - NEW SOUTH WALES - Sydney - Maroochydore - SOLOMON ISLANDS - Submarine cable charted

Former Notice - 663(P)/2022 is cancelled
33 Below Pty Ltd

Cancel this notice on receipt.

Chart formerly affected - Aus 235 - Aus 809 - Aus 4601 (INT 601) - Aus 4604 (INT 604) - Aus 4622 (INT 622) - Aus 4623 (INT 623) - Aus 4634 (INT 634) - Aus 4643 (INT 643)

**785(T)/2022 PACIFIC OCEAN - Scientific instruments
UKHO**

Grey pillar buoys exist in the following positions:

5° 02'.3 N 164° 49'.9 E
0° 00'.8 N 164° 59'.8 E
1° 59'.9 S 164° 58'.6 E
5° 01'.0 S 165° 10'.0 E
8° 02'.2 S 164° 46'.4 E.

Chart temporarily affected - Aus 4604 (INT 604)

786(T)/2022 PACIFIC OCEAN - Scientific instruments

Former Notice - 664(T)/2017 is cancelled
UKHO

Cancel this notice on receipt.

Chart formerly affected - Aus 4623 (INT 623)

787(T)/2022 AUSTRALIA - QUEENSLAND - Moreton Bay - Mud Island - Scientific instrument recovered

Former Notice - 530(T)/2018 is cancelled
Maritime Safety Queensland

Cancel this notice on receipt.

Chart formerly affected - Aus 236

788(P)/2022 AUSTRALIA - CORAL SEA - Diamond Islets - Shoaling
LADS Flight

Shoaler depths than those charted exist in the vicinity of the Diamond Islets.

Charts will updated in due course.

Chart which will be affected - Aus 614

789(T)/2022 AUSTRALIA - CORAL SEA - Diamond Islets - Shoaling
Former Notice - 225(P)/2017 is cancelled
LADS Flight

Cancel this notice on receipt.

Chart formerly affected - Aus 614 - Aus 4620 (INT 620) - Aus 4621 (INT 621)

790(T)/2022 AUSTRALIA - CORAL SEA - Mellish Reef - Light buoy off station northeastwards
Australian Bureau of Meteorology

The light buoy, *Fl. Y. 2s* (15° 51'.0 S 158° 27'.6 E), is off station.

Chart temporarily affected - Aus 4604 (INT 604)

791(T)/2022 AUSTRALIA - CORAL SEA - Mellish Reef - Light buoy off station northeastwards
Former Notice - 951(T)/2021 is cancelled
Australian Bureau of Meteorology

Cancel this notice on receipt.

Chart formerly affected - Aus 4604 (INT 604) - Aus 4634 (INT 634)

792(T)/2022 PAPUA NEW GUINEA - Ava Point - Light unlit
National Maritime Safety Authority PNG Coastal Navigation Warning 25/2021

The light, *Fl. 12s 188m 10M* (10° 34'.14 S 149° 52'.89 E), is unlit.

Chart temporarily affected - Aus 4604 (INT 604) - PNG 507

793(T)/2022 PAPUA NEW GUINEA - Ava Point - Light unlit
Former Notice - 1066(T)/2021 is cancelled
National Maritime Safety Authority PNG Coastal Navigation Warning 25/2021

Cancel this notice on receipt.

Chart formerly affected - Aus 4604 (INT 604) - Aus 4620 (INT 620) - Aus 4621 (INT 621) - PNG 507

794(T)/2022 PAPUA NEW GUINEA - Huon Gulf - Fish aggregating devices
National Maritime Safety Authority PNG Coastal Navigation Warning 8/2018

23 fish aggregating devices exist in an area bounded by the following positions:

7° 00'.0 S 147° 40'.0 E

7° 55'.0 S 147° 40'.0 E

7° 55'.0 S 148° 50'.0 E

7° 00'.0 S 148° 50'.0 E.

Mariners are advised to navigate with caution.

Chart temporarily affected - Aus 4622 (INT 622) - PNG 386 - PNG 521 - PNG 522 - PNG 523

795(T)/2022 PAPUA NEW GUINEA - Huon Gulf - Fish aggregating devices*Former Notice* - 829(T)/2020 is cancelled

National Maritime Safety Authority PNG Coastal Navigation Warning 8/2018

Cancel this notice on receipt.

Chart formerly affected - Aus 4620 (INT 620) - Aus 4621 (INT 621) - Aus 4622 (INT 622) - PNG 386 - PNG 521 - PNG 522 - PNG 523**796(T)/2022 AUSTRALIA - NORTHERN TERRITORY - Darwin - Military exercise completed***Former Notice* - 618(T)/2022 is cancelled

Department of Defence

Cancel this notice on receipt.

Chart formerly affected - Aus 18 - Aus 20 - Aus 26 - Aus 309 - Aus 310 - Aus 315 - Aus 316 - Aus 714 - Aus 719 - Aus 720 - Aus 721 - Aus 4721 (INT 721)**797(T)/2022 AUSTRALIA - WESTERN AUSTRALIA - Barrow Island - Drill rig northwestwards**

Australian Maritime Safety Authority

Drill rig *Noble Tom Prosser* is conducting drilling operations in position 20° 32'.07 S 115° 14'.88 E.**Chart temporarily affected - Aus 328 - Aus 742****798(T)/2022 AUSTRALIA - WESTERN AUSTRALIA - Barrow Island - Drill rig northeastwards moved***Former Notice* - 396(T)/2022 is cancelled

Australian Maritime Safety Authority

Cancel this notice on receipt.

Chart formerly affected - Aus 327 - Aus 742**799(T)/2022 AUSTRALIA - WESTERN AUSTRALIA - Cape Bouvard - Scientific instruments recovered***Former Notice* - 708(T)/2021 is cancelled

Department of Transport WA Notice 92/2021

Cancel this notice on receipt.

Chart formerly affected - Aus 755**800(T)/2022 AUSTRALIA - WESTERN AUSTRALIA - Geographe Bay - Scientific instruments**

Department of Transport WA Notice 2792/2022

Special light buoys, *Fl. Y. 2-5s*, exist in the following positions:

33° 37'.63 S 115° 20'.26 E

33° 35'.86 S 115° 17'.80 E

33° 35'.10 S 115° 08'.70 E.

Chart temporarily affected - Aus 755**801(T)/2022 AUSTRALIA - WESTERN AUSTRALIA - North West Cape - Light relit***Former Notice* - 627(T)/2022 is cancelled

Australian Maritime Safety Authority

Cancel this notice on receipt.

Chart formerly affected - Aus 328 - Aus 329 - Aus 744 - Aus 745 - Aus 4708 (INT 708) - Aus 4723 (INT 723) - Aus 4725 (INT 725)

802(T)/2022 AUSTRALIA - SOUTH AUSTRALIA - Yorke Peninsula - Cape Spencer - Light altered

Department for Infrastructure and Transport SA Notice 30(T)/2022

The light, *Fl(3)15s 78m 8M & F.R.11M* (35° 17'.97 S 136° 52'.96 E), has been temporarily altered to *Fl(3)15s 78m 3M & F.R.11M*.

Chart temporarily affected - Aus 343 - Aus 485 - Aus 780

803(T)/2022 AUSTRALIA - VICTORIA - Port Phillip - South Channel - Shoaling; virtual AIS

Former Notice - 639(T)/2022 is cancelled

Victorian Ports Corporation (Melbourne) Notice 265(T)/2022, 320(T)/2022

Shoaling exists in the South Channel and is marked by special virtual AIS as follows:

<i>Position</i>	<i>Remarks</i>
38° 17'.72 S 144° 41'.54 E	TB3
38° 18'.02 S 144° 43'.08 E	TB4
38° 19'.05 S 144° 48'.63 E	TB5.

Vessels with draught greater than 13.5m are advised to navigate north of TB3, north or south of TB4 and south of TB5.

Mariners are advised to navigate with caution in the area.

Chart temporarily affected - Aus 143 - Aus 144 - Aus 788

804(T)/2022 AUSTRALIA - VICTORIA - Western Port - Warneet - Jetty closed

Parks Victoria Notice 327/2022

The jetty (38° 13'.66 S 145° 18'.35 E) has been deemed unsafe for public use and has been closed.

Temporary berthing is available at the floating pontoon.

Chart temporarily affected - Aus 151

805(T)/2022 SOLOMON ISLANDS - Indispensable Strait - Alite Reef - Light beacon unlit

Solomon Islands Maritime Safety Administration

The light beacon, *Q.10m 4M* (8° 51'.78 S 160° 36'.26 E), is unlit.

Chart temporarily affected - SLB 304

806(T)/2022 SOLOMON ISLANDS - Indispensable Strait - Alite Reef - Light beacon unlit

Former Notice - 303(T)/2022 is cancelled

Solomon Islands Maritime Safety Administration

Cancel this notice on receipt.

Chart formerly affected - Aus 4623 (INT 623) - Aus 4634 (INT 634) - SLB 304

807(T)/2022 SOLOMON ISLANDS - Nggela Channel - Indalilau Island - Light beacon unlit

Solomon Islands Maritime Safety Administration

The light beacon, *Fl(2)10s 8m 10M* (9° 11'.60 S 160° 21'.65 E), is unlit.

Chart temporarily affected - Aus 4604 (INT 604) - SLB 201 - SLB 304

808(T)/2022 SOLOMON ISLANDS - Nggela Channel - Indalilau Island - Light beacon unlit

Former Notice - 304(T)/2022 is cancelled

Solomon Islands Maritime Safety Administration

Cancel this notice on receipt.

Chart formerly affected - Aus 4604 (INT 604) - Aus 4623 (INT 623) - Aus 4634 (INT 634) - SLB 201 - SLB 304

II

HYDROGRAPHIC REPORTS

NIL

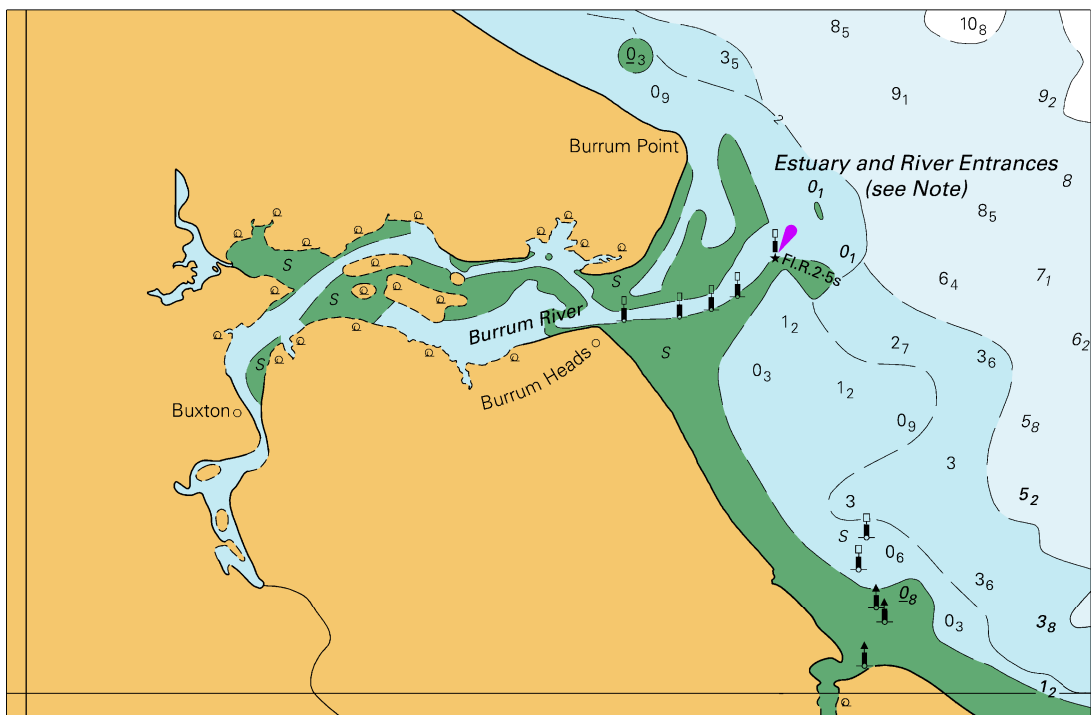
To accompany Australian Notice to Mariners 772/2022

ESTUARY AND RIVER ENTRANCES

The crossing of coastal bars and entry to rivers and estuaries is potentially dangerous. Bars and entrances are dynamic in nature, hence the depth and preferred approach may vary. Leading beacons and other navigational aids may not always indicate the best approach. If mariners are unsure of the condition at a particular bar or entrance, local information should be sought prior to crossing.

Note for chart Aus 818

To accompany Australian Notice to Mariners 770/2022

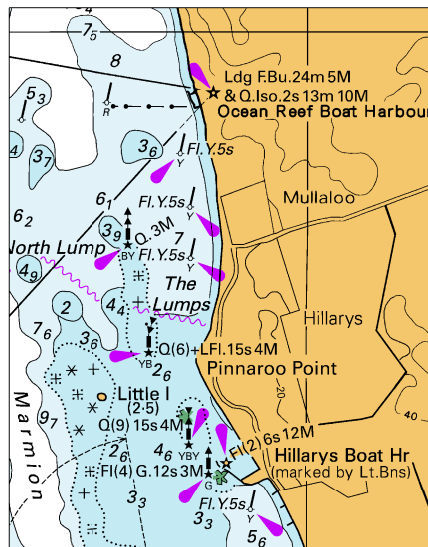


Block for chart Aus 817

© Commonwealth of Australia 2022

(143.6 x 93.6mm)

To accompany Australian Notice to Mariners 775/2022



Block for chart Aus 754 (56.4 x 71.7mm)

© Commonwealth of Australia 2022