



22 July 2022

Edition 15

AUSTRALIAN NOTICES TO MARINERS

Notices 548 - 591

Published fortnightly by the Australian Hydrographic Office



Australian Notices to Mariners are the authority for correcting charts and publications published by the Australian Hydrographic Office covering Australia, Papua New Guinea, Solomon Islands, Australian Antarctic Territory and Timor-Leste.

Commodore S.T. DUNNE RAN
Hydrographer of Australia

SECTIONS.

- I. **Australian Notices to Mariners, including blocks and notes.**
- II. **Hydrographic Reports.**

SUPPLEMENTS.

- I. **Tracings**
 - II. **Cumulative List of Australian Notices to Mariners.**
 - III. **Cumulative List of Temporary and Preliminary Australian Notices to Mariners.**
 - IV. **Temporary and Preliminary Notices in force.**
-
-

© Commonwealth of Australia 2022

This work is copyright. Apart from any use permitted under the Copyright Act 1968, no part may be reproduced by any process, adapted, communicated or commercially exploited without prior written permission from The Commonwealth represented by the Australian Hydrographic Office.

IMPORTANT NOTICE

This edition of Notices to Mariners includes all significant information affecting AHO products which the AHO has become aware of since the last edition. All reasonable efforts have been made to ensure the accuracy and completeness of the information, including third party information, on which these updates are based. The AHO regards third parties from which it receives information as reliable, however the AHO cannot verify all such information and errors may therefore exist. The AHO does not accept liability for errors in third party information.

GENERAL INSTRUCTIONS

The substance of these notices should be inserted on the charts affected.

Bearings are referred to the true compass and are reckoned clockwise from North; those relating to lights are given as seen by an observer from seaward.

Positions quoted in notices relate to WGS84 which is the horizontal datum for all charts produced by the Australian Hydrographic Office.

The range quoted for a light is its nominal range.

Depths are with reference to the chart datum of each chart. Heights are above mean high water springs or mean higher high water, as appropriate.

The capital letter (P) or (T) after the number of any notice denotes a preliminary or temporary notice respectively, which are contained separately at the end of the permanent notices.

REPORTING OF DANGERS

Mariners are particularly requested to notify the AUSTRALIAN HYDROGRAPHIC OFFICE, Locked Bag 8801 Wollongong, NSW 2500 (Fax 02-4223 6599, e-mail datacentre@hydro.gov.au or, alternatively by filling in and submitting the [Hydrographic Notes](#) forms located on the web site – www.hydro.gov.au), immediately on the discovery of new dangers or suspected dangers to navigation. For changes or defects in aids to navigation notify AusSAR (Fax 02-6230 6868 or email rccaus@amsa.gov.au).

AUTHORISED USE

Copies of Australian notices are available free of charge from the Australian Hydrographic Office (AHO) website (www.hydro.gov.au) and through the eNotices (email) service (www.hydro.gov.au/enotices/enotices.htm).

Individual Notices may be copied for the purpose of inserting Notice substance on official charts and publications. Paper copies may be printed by chart agents and distributed to customers on a cost recovery basis. Participating chart agents are listed on the AHO website as providing a 'Paper Notices to Mariners' service (www.hydro.gov.au/webapps/jsp/agents/agents-list.jsp). Copies of the notices may not be sold for profit without prior written agreement.

NUMERICAL INDEX OF NOTICES TO MARINERS

Edition No 15

Notices	Aus Chart, INT Chart, ENC Cell, AHP, BA Pubs
548	Aus 4709, INT 709
549	Aus 4622, 4725, 4726, 4727, 4728, INT 622, 725, 726, 727, 728
550	Amendment to Australian National Tide Tables 2022
551	Aus 806, 807
552	Aus 812
553	Aus 830
554	Aus 292, 839
555	Aus 292, 293, 839, 841, 4620, 4720, INT 620, 720
556	Aus 4
557	Aus 4
558	Aus 316, 4721, INT 721
559	Aus 15, 716
560	Aus 753, 4725, INT 725
561	Aus 4071, INT 71
562	Aus 788, 801
563	Aus 487
564(T)	Aus 200
565(T)	Aus 249, 250
566(T)	Aus 249, 250
567(T)	Aus 817
568(T)	Aus 6
569(T)	Aus 249, 250, 823, 824
570(T)	Aus 819, 820
571(T)	Aus 4, 301
572(T)	Aus 4
573(P)	PNG 520
574(T)	Aus 299
575(T)	Aus 310
576(T)	Aus 306, 715
577(T)	Aus 328, 4723, 4725, INT 723, 725
578(T)	Aus 328, 742
579(T)	Aus 327, 742
580(T)	Aus 327
581(T)	Aus 328, 742
582(T)	Aus 328
583(T)	Aus 53
584(T)	Aus 53, 326, 327, 328, 4722, 4723, 4725, INT 722, 723, 725
585(T)	Aus 116
586(T)	Aus 130
587(T)	Aus 777
588(T)	Aus 357, 487, 4644, INT 644
589(T)	Aus 349, 787
590(T)	Aus 143
591(T)	Aus 797

NUMERICAL INDEX OF CHARTS AFFECTED

Edition No 15

Aus Chart	Notices
Aus 4	556, 557, 571(T), 572(T)
Aus 6	568(T)
Aus 15	559
Aus 53	583(T), 584(T)
Aus 116	585(T)
Aus 130	586(T)
Aus 143	590(T)
Aus 200	564(T)
Aus 249	565(T), 566(T), 569(T)
Aus 250	565(T), 566(T), 569(T)
Aus 292	554, 555
Aus 293	555
Aus 299	574(T)
Aus 301	571(T)
Aus 306	576(T)
Aus 310	575(T)
Aus 316	558
Aus 326	584(T)
Aus 327	579(T), 580(T), 584(T)
Aus 328	577(T), 578(T), 581(T), 582(T), 584(T)
Aus 349	589(T)
Aus 357	588(T)
Aus 487	563, 588(T)
Aus 715	576(T)
Aus 716	559
Aus 742	578(T), 579(T), 581(T)
Aus 753	560
Aus 777	587(T)
Aus 787	589(T)
Aus 788	562
Aus 797	591(T)
Aus 801	562
Aus 806	551
Aus 807	551
Aus 812	552
Aus 817	567(T)
Aus 819	570(T)
Aus 820	570(T)
Aus 823	569(T)
Aus 824	569(T)
Aus 830	553
Aus 839	554, 555
Aus 841	555
Aus 4071	561
Aus 4620	555
Aus 4622	549
Aus 4644	588(T)
Aus 4709	548
Aus 4720	555
Aus 4721	558
Aus 4722	584(T)
Aus 4723	577(T), 584(T)
Aus 4725	549, 560, 577(T), 584(T)
Aus 4726	549

Aus Chart	Notices
Aus 4727	549
Aus 4728	549
PNG 520	573(P)

INT Chart	Notices
INT 71	561
INT 620	555
INT 622	549
INT 644	588(T)
INT 709	548
INT 720	555
INT 721	558
INT 722	584(T)
INT 723	577(T), 584(T)
INT 725	549, 560, 577(T), 584(T)
INT 726	549
INT 727	549
INT 728	549

548 AUSTRALIA - Products - New Charts, New Editions, Withdrawn Charts

Australian Hydrographic Office

New Charts

<i>Chart</i>	<i>Title and Geographical limits</i>	<i>Scale</i>	<i>Publication Date</i>	<i>Remarks</i>
NIL				

New Electronic Navigation Chart (Aus ENC)

<i>Cell Name</i>	<i>Title</i>	<i>Publication Date</i>	<i>Remarks</i>
NIL			

New Editions and Withdrawn Charts

<i>Chart</i>	<i>Title</i>	<i>Scale</i>	<i>Publication Date</i>	<i>Remarks</i>
Aus 4709 (Edition 6)	Southern Ocean - Australia - South Coast	1:3 500 000	22 July 2022	New edition with general updating throughout. Chart Aus 4709 Edition 5 dated 20 August 2004 is now superseded and must be withdrawn from use.

Chart permanently withdrawn

Charts listed above as withdrawn no longer meet chart carriage requirements and should be marked as "superseded" and replaced with the new chart/ new edition listed prior to passage through the area covered by the new chart.

When placing orders with a chart agent between notice of forthcoming edition and its publication, mariners should advise whether their order pertains to the current edition or the new edition.

For further details refer to the AHO website at www.hydro.gov.au for new edition and new chart stock arrival information.

549 AUSTRALIA - Products - New Charts and New Editions to be published shortly

Australian Hydrographic Office

New Charts to be published shortly

<i>Chart</i>	<i>Title</i>	<i>Scale</i>	<i>Remarks</i>
NIL			

New Editions to be published shortly

<i>Chart</i>	<i>Title</i>	<i>Scale</i>	<i>Remarks</i>
Aus 4622 (INT 622)	South Pacific Ocean - Admiralty Islands to Solomon Islands	1:1 500 000	New edition with general updating throughout; including latest bathymetric data.

Charts to be withdrawn without replacement 5 August 2022

<i>Chart</i>	<i>Title</i>	<i>Scale</i>	<i>Remarks</i>
Aus 4725 (INT 725) Edition 2	Australia - West Coast - North West Cape to Cape Leeuwin	1:1 500 000	13 July 2018
Aus 4726 (INT 726) Edition 2	Australia - South West Coast - Western Australia - Cape Leeuwin to Esperance	1:1 500 000	28 January 1992
Aus 4727 (INT 727) Edition 1	Australia - South Coast - Esperance to Whidbey Isles	1:1 500 000	24 June 1994
Aus 4728 (INT 728) Edition 1	Southern Ocean - Spencer Gulf to Tasmania	1:1 500 000	17 December 2010

550 AUSTRALIA - Product - Amendment to Australian National Tide Tables 2022
Australian Hydrographic Office

ANTT 2022

Page 348

Amend EDEN Correction to Chart Datum AUS 192 NE 09 June 2022 0.0

Page 351

Amend PORT ADELAIDE OUTER HARBOR Correction to Chart Datum AUS 781 NE 09 June 2022 0.0

Page 352

Amend PORT GILES Correction to Chart Datum AUS 781 NE 09 June 2022 0.0

Page 354

Amend THURSDAY ISLAND Correction to Chart Datum ENC AU5299P0 to AU5TIS01

551 AUSTRALIA - NEW SOUTH WALES - Baronda Head to Montague Island - Depths

Fugro

Aus 806 [925/2021]

Insert	depth, 12 ₇ m, enclosed by contour	36° 33'.91 S	150° 04'.36 E
	depth, 8 ₇ m, enclosed by contour	36° 40'.11 S	150° 01'.06 E
Replace	depth, 16 ₆ m, with depth, 10 ₈ m	36° 15'.0 S	150° 12'.6 E
Delete	depth, 1m, and enclosing contour	36° 14'.8 S	150° 09'.3 E
	depth, 19 ₃ m, and enclosing contour	36° 33'.7 S	150° 04'.6 E

Aus 807 [221/2022]

Replace	depth, 16 ₆ m, with depth, 10 ₈ m	36° 15'.0 S	150° 12'.6 E
Delete	depth, 1m, and enclosing contour	36° 14'.8 S	150° 09'.3 E

552 AUSTRALIA - NEW SOUTH WALES - Bellinger River to Whitmore Shoal - Depths

Fugro

Aus 812 [192/2022]

Insert	depth, 17 ₈ m, enclosed by contour	30° 20'.76 S	153° 09'.16 E
	depth, 16 ₆ m, and extend contour E to enclose	30° 21'.52 S	153° 08'.70 E
	depth, 8 ₈ m, enclosed by contour	30° 25'.88 S	153° 05'.31 E
Delete	depth, 21 ₉ m	30° 21'.4 S	153° 08'.8 E
	depth, 17 ₃ m	30° 25'.8 S	153° 05'.6 E

553 AUSTRALIA - QUEENSLAND - Arlington Reef - Light buoys

Maritime Safety Queensland Notice 305/2022

Aus 830 [518/2022]

Replace	buoy with port lateral cylindrical light buoy, <i>Fl.R.2.5s</i> , without topmark	16° 40'.6 S	145° 57'.2 E
	buoy with port lateral cylindrical light buoy, <i>Fl.R.2.5s</i> , without topmark	16° 41'.1 S	145° 57'.1 E
	buoy with starboard lateral conical light buoy, <i>Fl.G.2.5s</i> , without topmark	16° 41'.7 S	145° 57'.0 E

554 AUSTRALIA - QUEENSLAND - Eborac Island - Light

Australian Maritime Safety Authority Final ATH 13/2022

Aus 292 [12/2022]

Amend light range to 15M 10° 40'.9 S 142° 32'.0 E

Aus 839 [147/2022]

Amend light range to 15M 10° 40'.9 S 142° 32'.0 E

555 AUSTRALIA - QUEENSLAND - TORRES STRAIT - Albany Rock to Twin Island - Lights

Australian Maritime Safety Authority Preliminary ATH 59/2016, 60/2016

Aus 292 [554/2022]Amend light range to 10/8M 10° 27'.8 S 142° 26'.9 E
light range to 10/8M 10° 43'.1 S 142° 37'.8 E**Aus 293 [148/2022]**

Amend light range to 10/8M 10° 27'.78 S 142° 26'.89 E

Aus 839 [554/2022]Amend light range to 10/8M 10° 27'.8 S 142° 26'.9 E
light range to 10/8M 10° 43'.1 S 142° 37'.8 E**Aus 841 [148/2022]**

Amend light range to 10/8M 10° 27'.8 S 142° 26'.9 E

Aus 4620 (INT 620) [813/2021]

Amend light range to 10/8M 10° 27'.8 S 142° 26'.9 E

Aus 4720 (INT 720) [145/2022]

Amend light range to 10/8M 10° 27'.8 S 142° 26'.9 E

556 AUSTRALIA - QUEENSLAND - Weipa - Embley River - Maintained depths

Maritime Safety Queensland Notice 291(T)/2022

Aus 4 (Weipa) [257/2022]Amend legend to 9.5m 12° 39'.95 S 141° 50'.86 E
legend to *Maintained Depth 11.7m* 12° 40'.29 S 141° 50'.12 E**557 AUSTRALIA - QUEENSLAND - Weipa - Embley River - Mooring buoy**

Maritime Safety Queensland Notice 316/2022

Aus 4 (Weipa) [556/2022]

Delete lit mooring buoy 12° 41'.40 S 141° 52'.94 E

558 AUSTRALIA - NORTHERN TERRITORY - Beagle Gulf - Chart withdrawn; chart limits; contour

Australian Hydrographic Office

Aus 316 [519/2022]Insert contour, between 12° 16'.29 S 130° 12'.14 E
12° 16'.69 S 130° 12'.41 E
12° 16'.98 S 130° 12'.14 E**Aus 4721 (INT 721) [380/2022]**Insert magenta limits, between 10° 39'.0 S 131° 07'.8 E
10° 39'.0 S 131° 11'.0 E
12° 36'.0 S 131° 11'.0 E
12° 36'.0 S 131° 07'.8 EDelete magenta limits, between 10° 39'.0 S 131° 07'.8 E
12° 36'.0 S 131° 07'.8 E
magenta limits with legend, Aus 722, centred on 12° 08'.0 S 130° 40'.0 E

559 AUSTRALIA - NORTHERN TERRITORY - Cadell Strait - Mooring buoy

Department of Infrastructure, Planning and Logistics NT Notice 17(T)/2022

Aus 15 (Cadell Strait) [539/2020]Insert lit yellow cylindrical mooring buoy, *Fl.Y.3s* 12° 02'.30 S 135° 36'.79 EDelete depth, 7₆m 12° 02'.4 S 135° 36'.8 E**Aus 716 [914/2018]**Replace depth, 7₆m, with lit yellow cylindrical mooring buoy, *Fl.Y.3s* 12° 02'.3 S 135° 36'.8 E**560 AUSTRALIA - WESTERN AUSTRALIA - Leeman - Light**

Department of Transport WA

Aus 753 [109/2022]Amend light range to *12M* 29° 56'.7 S 114° 59'.0 E**Aus 4725 (INT 725) [521/2022]**Amend light range to *12M* 29° 56'.7 S 114° 59'.0 E**561 INDIAN OCEAN - Lakshadweep (Laccadive Islands) - Nine Degree Channel - Depth**

BA Notice 27/2905/2022

Aus 4071 (INT 71) [949/2020]

Replace depth, 370m, with depth, 329m 9° 19'.1 N 73° 28'.4 E

562 AUSTRALIA - VICTORIA - Cape Schanck - Light buoys; AIS

Maritime Safety Victoria Notice 216/2022

Aus 788 [21/2022]Insert special conical light buoy, *Fl.Y.5s*, with topmark
magenta circle with legend, *AIS* 38° 27'.02 S 144° 50'.74 E
38° 27'.02 S 144° 50'.74 E**Aus 801 [268/2022]**Insert special conical light buoy, *Fl.Y.5s*, with topmark
magenta circle with legend, *AIS* 38° 27'.02 S 144° 50'.74 E
38° 27'.02 S 144° 50'.74 EDelete depth, 15₂m 38° 27'.2 S 144° 50'.6 E**563 AUSTRALIA - TASMANIA - Banks Strait - Chart limit**

Australian Hydrographic Office

Aus 487 [526/2022]Insert magenta limit, between 40° 40'.02 S 148° 10'.39 E
41° 01'.54 S 148° 10'.39 E

564(T)/2022 AUSTRALIA - NEW SOUTH WALES - Port Jackson - Longnose Point to Coal Jetty - Drilling operations completed

Former Notice - 230(T)/2022 is cancelled
Port Authority of New South Wales Notice 13/2022

Cancel this notice on receipt.

Chart formerly affected - Aus 200

565(T)/2022 AUSTRALIA - QUEENSLAND - Hay Point - Highwater Island - Lights relit

Former Notice - 450(T)/2022 is cancelled
Maritime Safety Queensland

Cancel this notice on receipt.

Chart formerly affected - Aus 249 - Aus 250

566(T)/2022 AUSTRALIA - QUEENSLAND - Hay Point - Scientific instrument

Former Notice - 66(T)/2022 is cancelled
Maritime Safety Queensland Notice 300(T)/2022

A special light buoy, *Fl(5)Y.20s*, exists in position 21° 13'.62 S 149° 17'.82 E.

Chart temporarily affected - Aus 249 - Aus 250

567(T)/2022 AUSTRALIA - QUEENSLAND - Hervey Bay - Pialba - Wreck salvaged

Former Notice - 531(T)/2022 is cancelled
Maritime Safety Queensland

Cancel this notice on receipt.

Chart formerly affected - Aus 817

568(T)/2022 AUSTRALIA - QUEENSLAND - Karumba - Dredging operations completed

Former Notice - 451(T)/2022 is cancelled
Maritime Safety Queensland Notice 297(T)/2022

Cancel this notice on receipt.

Chart formerly affected - Aus 6

569(T)/2022 AUSTRALIA - QUEENSLAND - Mackay - Slade Rock - Light buoy off station

Maritime Safety Queensland Notice 296(T)/2022

The isolated danger light buoy, *Fl(2)6s* (21° 05'.15 S 149° 14'.36 E), is off station.

Chart temporarily affected - Aus 249 - Aus 250 - Aus 823 - Aus 824

570(T)/2022 AUSTRALIA - QUEENSLAND - Rosslyn Bay - Dredging operations

Maritime Safety Queensland Notice 318(T)/2022

The dredge *Saibai* and support vessels *Darnley* and *Barralodge* are conducting dredging operations in Rosslyn Bay Marina (23° 09'.52 S 150° 47'.23 E).

A floating and submerged pipeline marked by special light buoys, *Fl.Y.5s*, exists in the marina between the dredge and a discharge location in the vicinity of position 23° 09'.02 S 150° 47'.84 E.

Mariners are advised to navigate with caution in the area and to contact VHF Ch 16 when passing the dredge in tow or when the vessel is handling/connecting pipeline.

Chart temporarily affected - Aus 819 - Aus 820

571(T)/2022 AUSTRALIA - QUEENSLAND - Weipa - Dredging operations completed

Former Notice - 325(T)/2022 is cancelled

Maritime Safety Queensland Notice 297(T)/2022

Cancel this notice on receipt.

Chart formerly affected - Aus 4 - Aus 301**572(T)/2022 AUSTRALIA - QUEENSLAND - Weipa - Obstruction; light buoy**

Former Notice - 69(T)/2022 is cancelled

Maritime Safety Queensland Notice 315(T)/2022

An obstruction marked by a special light buoy, *F*, exists in position 12° 45'.60 S 141° 35'.30 E.

Mariners are advised to navigate with caution in the area.

Chart temporarily affected - Aus 4**573(P)/2022 PAPUA NEW GUINEA - Collingwood Bay - Rainu Reef - Uncharted island**

Fugro

An uncharted island has been reported in position 9° 19'.92 S 149° 11'.55 E.

Mariners are advised to navigate with caution in the area.

Charts will updated in due course.

Chart which will be affected - PNG 520**574(T)/2022 AUSTRALIA - TORRES STRAIT - Horn Island - Wasaga - Wreck**

Maritime Safety Queensland Notice 311(T)/2022

A wreck marked by a special light buoy, *Fl.Y.2-5s*, exists in position 10° 35'.38 S 142° 14'.66 E.

Mariners are advised to navigate with caution in the area.

Chart temporarily affected - Aus 299**575(T)/2022 AUSTRALIA - NORTHERN TERRITORY - Lynedoch Bank - Drill rig northwestwards**

MODU *Valaris MS-1*

Drill rig *Valaris MS-1* is conducting drilling operations in position 9° 52'.12 S 130° 18'.12 E.

Chart temporarily affected - Aus 310**576(T)/2022 AUSTRALIA - NORTHERN TERRITORY - Port Bradshaw - Space debris**

Former Notice - 503(T)/2022 is cancelled

Equatorial Launch Australia

Cancel this notice on receipt.

Chart formerly affected - Aus 306 - Aus 715**577(T)/2022 AUSTRALIA - WESTERN AUSTRALIA - Barrow Island - Subsea operations northwestwards completed**

Former Notice - 910(T)/2019 is cancelled

Chevron Australia

Cancel this notice on receipt.

Chart formerly affected - Aus 328 - Aus 4723 (INT 723) - Aus 4725 (INT 725)

578(T)/2022 AUSTRALIA - WESTERN AUSTRALIA - Barrow Island - Subsea operations northwestwards completed
Former Notice - 210(T)/2022 is cancelled
 Sapura Energy Australia

Cancel this notice on receipt.

Chart formerly affected - Aus 328 - Aus 742

579(T)/2022 AUSTRALIA - WESTERN AUSTRALIA - Dampier Archipelago - Mooring buoy unlit northwards
 Vermilion Oil and Gas Australia

The lit mooring buoy, *Mo(U)Y.15s* (20° 06'.95 S 116° 26'.11 E), is unlit.

Chart temporarily affected - Aus 327 - Aus 742

580(T)/2022 AUSTRALIA - WESTERN AUSTRALIA - Glomar Shoal - Restricted area northwestwards removed
Former Notice - 459(T)/2022 is cancelled
 National Offshore Petroleum Safety and Environmental Management Authority

Cancel this notice on receipt.

Chart formerly affected - Aus 327

581(T)/2022 AUSTRALIA - WESTERN AUSTRALIA - Montebello Islands - Well plug and abandonment works northwestwards
 Woodside Energy Ltd

Drill rig *Ocean Apex* and support vessels *Maersk Mover* and *Maersk Master* are conducting well plug and abandonment works in the vicinity of position 20° 04'.21 S 115° 11'.01 E.

Mariners are advised to navigate with caution in the area.

Chart temporarily affected - Aus 328 - Aus 742

582(T)/2022 AUSTRALIA - WESTERN AUSTRALIA - Montebello Islands - Drill rig northwestwards moved
Former Notice - 460(T)/2022 is cancelled
 Woodside Energy Ltd

Cancel this notice on receipt.

Chart formerly affected - Aus 328

583(T)/2022 AUSTRALIA - WESTERN AUSTRALIA - Port Hedland - Mooring buoys
 Pilbara Ports Authority Notice 7(T)/2022

A lit orange cylindrical mooring buoy, Q, exists in position 20° 16'.40 S 118° 35'.29 E.

A lit orange cylindrical mooring buoy, VQ, exists in position 20° 16'.21 S 118° 35'.28 E.

Chart temporarily affected - Aus 53

584(T)/2022 AUSTRALIA - WESTERN AUSTRALIA - Port Hedland to Cuvier Abyssal Basin - Survey operations completed
Former Notice - 855(T)/2021 is cancelled
 EGS Survey Pty Ltd

Cancel this notice on receipt.

Chart formerly affected - Aus 53 - Aus 326 - Aus 327 - Aus 328 - Aus 4722 (INT 722) - Aus 4723 (INT 723) - Aus 4725 (INT 725)

585(T)/2022 AUSTRALIA - WESTERN AUSTRALIA - Warnbro Sound - Safety Bay - Shoaling

Department of Transport WA Notice 1897(T)/2022

Shoaling exists between the boat ramp (32° 18'.42 S 115° 43'.17 E) and the starboard lateral light buoy (32° 18'.69 S 115° 43'.11 E). The channel is almost completely obstructed by the encroaching sand bar.

Mariners are advised to navigate with caution in the area and should not rely solely on the light buoys for navigation through the channel.

Chart temporarily affected - Aus 116**586(T)/2022 AUSTRALIA - SOUTH AUSTRALIA - Port Adelaide - North Haven - Dredging operations completed**

Former Notice - 1076(T)/2021 is cancelled

Department for Infrastructure and Transport SA

Cancel this notice on receipt.

Chart formerly affected - Aus 130**587(T)/2022 AUSTRALIA - SOUTH AUSTRALIA - Wallaroo - Point Hughes - Harbour works**

Department for Infrastructure and Transport SA Notice 18(T)/2022

Works associated with the construction of a new breakwater are in progress in the vicinity of position 33° 55'.88 S 137° 36'.29 E.

The works area is marked by special light buoys, *Fl.Y.4s*.

Mariners are advised to navigate with caution in the area.

Chart temporarily affected - Aus 777

588(T)/2022 AUSTRALIA - VICTORIA - Ninety Mile Beach - Traffic separation scheme southwestwards

Former Notice - 369(P)/2022 is cancelled

Australian Maritime Safety Authority

Decommissioning of oil and gas infrastructure will take place at Blackback Prod Well (38° 32'.42 S 148° 33'.24 E), Gudgeon Well (38° 30'.82 S 148° 28'.17 E) and Terakihi Well (38° 30'.27 S 148° 32'.89 E).

New temporary shipping fairways and a separation zone have been established to keep transiting ships away from decommissioning activities. The new shipping fairways and separation zone are bound by the following positions:

Northeast bound lane	38° 36'.941 S	148° 45'.842 E
	38° 39'.507 S	148° 48'.047 E
	38° 44'.600 S	148° 23'.000 E
	38° 42'.034 S	148° 20'.795 E.
Southwest bound lane	38° 33'.407 S	148° 42'.545 E
	38° 35'.750 S	148° 44'.746 E
	38° 40'.844 S	148° 19'.699 E
	38° 38'.500 S	148° 17'.500 E.
Separation zone	38° 35'.750 S	148° 44'.746 E
	38° 36'.941 S	148° 45'.842 E
	38° 42'.034 S	148° 20'.795 E
	38° 40'.844 S	148° 19'.699 E.

The fairways and separation zone come into effect on 1 August 2022 at 0000 UTC and will remain in place until further notice.

Mariners should follow the appropriate traffic lane and navigate in the general direction of traffic flow for that lane. They should, as far as practicable, keep clear of the separation zone.

Due to an increased risk of collision, particularly with vessels that may be restricted in their ability to manoeuvre, mariners should keep a good look out and take early action to avoid collisions.

Note: For e-notice users, please see full edition for map.

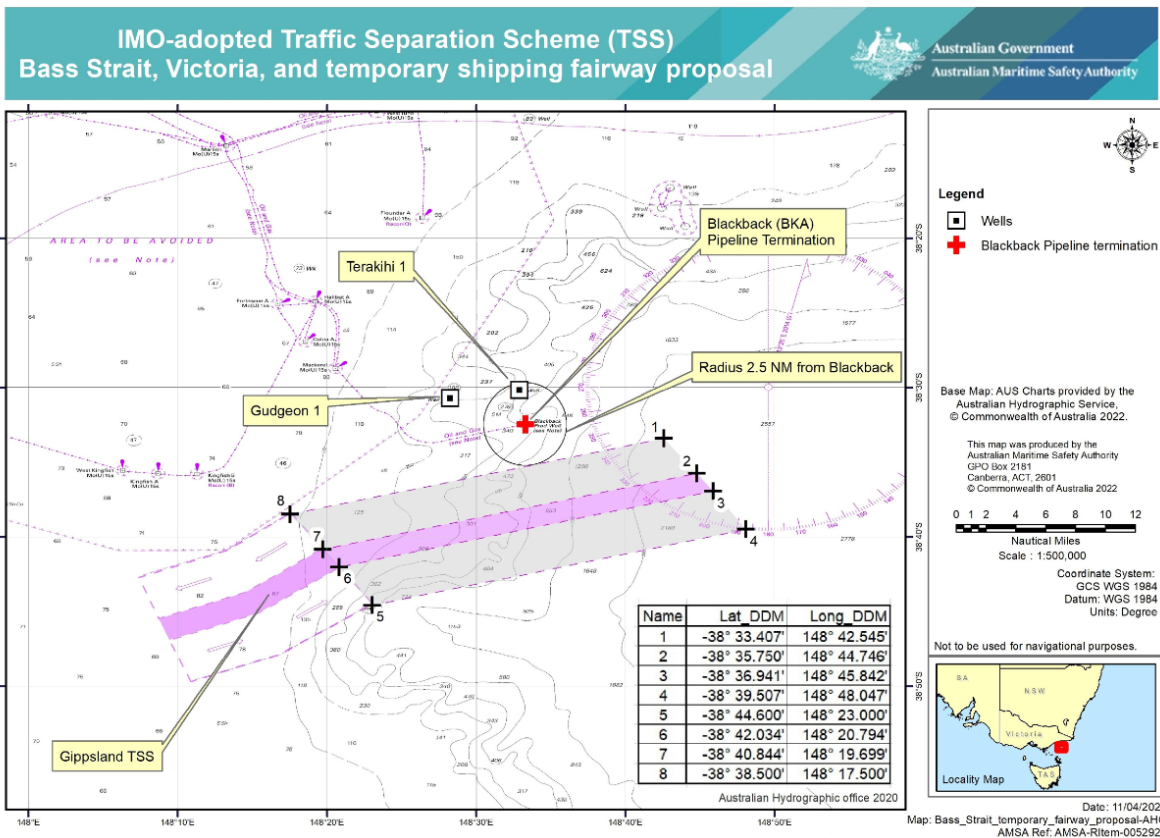


Chart temporarily affected - Aus 357 - Aus 487 - Aus 4644 (INT 644)

589(T)/2022 AUSTRALIA - VICTORIA - Port Campbell - Drill rig southwards

Former Notice - 370(T)/2022 is cancelled

MODU *Ocean Onyx*

Cancel this notice on receipt.

Chart formerly affected - Aus 349 - Aus 787

590(T)/2022 AUSTRALIA - VICTORIA - Port Phillip - Light beacon removed

Former Notice - 87(T)/2022 is cancelled

Parks Victoria Notice 250(T)/2022

The west cardinal light beacon, VQ(9)10s (38° 13'.42 S 145° 01'.58 E), has been removed.

Chart temporarily affected - Aus 143

591(T)/2022 AUSTRALIA - TASMANIA - Spring Bay - Marine farm; nav aids

Former Notice - 920(T)/2021 is cancelled

Marine and Safety Tasmania

Cancel this notice on receipt.

Chart formerly affected - Aus 797

II

HYDROGRAPHIC REPORTS

NIL

There are no Blocks in Edition 15 of 2022

This page is intentionally blank.