



13 May 2022

Edition 10

AUSTRALIAN NOTICES TO MARINERS

Notices 375 - 410

Published fortnightly by the Australian Hydrographic Office



Australian Notices to Mariners are the authority for correcting charts and publications published by the Australian Hydrographic Office covering Australia, Papua New Guinea, Solomon Islands, Australian Antarctic Territory and Timor-Leste.

Commodore S.T. DUNNE RAN
Hydrographer of Australia

SECTIONS.

- I. **Australian Notices to Mariners, including blocks and notes.**
- II. **Hydrographic Reports.**

SUPPLEMENTS.

- I. **Tracings**
 - II. **Cumulative List of Australian Notices to Mariners.**
 - III. **Cumulative List of Temporary and Preliminary Australian Notices to Mariners.**
 - IV. **Temporary and Preliminary Notices in force.**
-
-

© Commonwealth of Australia 2022

This work is copyright. Apart from any use permitted under the Copyright Act 1968, no part may be reproduced by any process, adapted, communicated or commercially exploited without prior written permission from The Commonwealth represented by the Australian Hydrographic Office.

IMPORTANT NOTICE

This edition of Notices to Mariners includes all significant information affecting AHO products which the AHO has become aware of since the last edition. All reasonable efforts have been made to ensure the accuracy and completeness of the information, including third party information, on which these updates are based. The AHO regards third parties from which it receives information as reliable, however the AHO cannot verify all such information and errors may therefore exist. The AHO does not accept liability for errors in third party information.

GENERAL INSTRUCTIONS

The substance of these notices should be inserted on the charts affected.

Bearings are referred to the true compass and are reckoned clockwise from North; those relating to lights are given as seen by an observer from seaward.

Positions quoted in notices relate to WGS84 which is the horizontal datum for all charts produced by the Australian Hydrographic Office.

The range quoted for a light is its nominal range.

Depths are with reference to the chart datum of each chart. Heights are above mean high water springs or mean higher high water, as appropriate.

The capital letter (P) or (T) after the number of any notice denotes a preliminary or temporary notice respectively, which are contained separately at the end of the permanent notices.

REPORTING OF DANGERS

Mariners are particularly requested to notify the AUSTRALIAN HYDROGRAPHIC OFFICE, Locked Bag 8801 Wollongong, NSW 2500 (Fax 02-4223 6599, e-mail datapcentre@hydro.gov.au or, alternatively by filling in and submitting the [Hydrographic Notes](#) forms located on the web site – www.hydro.gov.au), immediately on the discovery of new dangers or suspected dangers to navigation. For changes or defects in aids to navigation notify AusSAR (Fax 02-6230 6868 or email rccaus@amsa.gov.au).

AUTHORISED USE

Copies of Australian notices are available free of charge from the Australian Hydrographic Office (AHO) website (www.hydro.gov.au) and through the eNotices (email) service (www.hydro.gov.au/enotices/enotices.htm).

Individual Notices may be copied for the purpose of inserting Notice substance on official charts and publications. Paper copies may be printed by chart agents and distributed to customers on a cost recovery basis. Participating chart agents are listed on the AHO website as providing a 'Paper Notices to Mariners' service (www.hydro.gov.au/webapps/jsp/agents/agents-list.jsp). Copies of the notices may not be sold for profit without prior written agreement.

NUMERICAL INDEX OF NOTICES TO MARINERS

Edition No 10

Notices	Aus Chart, INT Chart, ENC Cell, AHP, BA Pubs
375	Aus 130, 767, 798, 800
376	Aus 178, 179, 722, 840
377	Amendment to Australian National Tide Tables 2022
378	Aus 700
379	Aus 814
380	Aus 309, 4721, INT 721
381	Aus 310
382	Aus 117
383	Aus 325
384	Aus 754
385	Aus 173, 794, 795, 4644, INT 644
386(T)	Aus 489, 807, 808, 4643, INT 643
387(T)	Aus 489, 806, 807, 808, 4643, INT 643
388(P)	Aus 242
389(T)	Aus 817
390(T)	Aus 259
391(T)	Aus 826
392(T)	Aus 367, 490, 822
393(T)	Aus 248, 260, 367, 490, 820, 822
394(T)	Aus 25
395(T)	Aus 65, 327, 742, 743
396(T)	Aus 327, 742
397(T)	Aus 65, 742
398(T)	Aus 325, 326
399(T)	Aus 57, 327, 742
400(T)	Aus 329
401(T)	Aus 327, 742
402(T)	Aus 343, 485, 776
403(T)	Aus 143
404(T)	Aus 357, 802
405(T)	Aus 181, 357, 802
406(T)	Aus 151
407(T)	Aus 151
408(T)	Aus 164
409(T)	Aus 168
410(P)	Aus 163, 164, 167, 178, 179, 487, 790, 798, 799, 800

NUMERICAL INDEX OF CHARTS AFFECTED

Edition No 10

Aus Chart	Notices
Aus 25	394(T)
Aus 57	399(T)
Aus 65	395(T), 397(T)
Aus 117	382
Aus 130	375
Aus 143	403(T)
Aus 151	406(T), 407(T)
Aus 163	410(P)
Aus 164	408(T), 410(P)
Aus 167	410(P)
Aus 168	409(T)
Aus 173	385
Aus 178	376, 410(P)
Aus 179	376, 410(P)
Aus 181	405(T)
Aus 242	388(P)
Aus 248	393(T)
Aus 259	390(T)
Aus 260	393(T)
Aus 309	380
Aus 310	381
Aus 325	383, 398(T)
Aus 326	398(T)
Aus 327	395(T), 396(T), 399(T), 401(T)
Aus 329	400(T)
Aus 343	402(T)
Aus 357	404(T), 405(T)
Aus 367	392(T), 393(T)
Aus 485	402(T)
Aus 487	410(P)
Aus 489	386(T), 387(T)
Aus 490	392(T), 393(T)
Aus 700	378
Aus 722	376
Aus 742	395(T), 396(T), 397(T), 399(T), 401(T)
Aus 743	395(T)
Aus 754	384
Aus 767	375
Aus 776	402(T)
Aus 790	410(P)
Aus 794	385
Aus 795	385
Aus 798	375, 410(P)
Aus 799	410(P)
Aus 800	375, 410(P)
Aus 802	404(T), 405(T)
Aus 806	387(T)
Aus 807	386(T), 387(T)
Aus 808	386(T), 387(T)
Aus 814	379
Aus 817	389(T)
Aus 820	393(T)
Aus 822	392(T), 393(T)
Aus 826	391(T)

Aus Chart	Notices
Aus 840	376
Aus 4643	386(T), 387(T)
Aus 4644	385
Aus 4721	380

INT Chart	Notices
INT 643	386(T), 387(T)
INT 644	385
INT 721	380

375 AUSTRALIA - Products - New Charts, New Editions, Withdrawn Charts

Australian Hydrographic Office

New Charts

<i>Chart</i>	<i>Title and Geographical limits</i>	<i>Scale</i>	<i>Publication Date</i>	<i>Remarks</i>
NIL				

New Electronic Navigation Chart (Aus ENC)

<i>Cell Name</i>	<i>Title</i>	<i>Publication Date</i>	<i>Remarks</i>
NIL			

New Editions and Withdrawn Charts

<i>Chart</i>	<i>Title</i>	<i>Scale</i>	<i>Publication Date</i>	<i>Remarks</i>
Aus 130 (Edition 3)	Australia - South Coast - South Australia - Approaches to Port Adelaide	1:37 500	13 May 2022	New edition with general updating throughout; including latest bathymetric data. Chart Aus 130 Edition 2 dated 2 April 2021 is now superseded and must be withdrawn from use.
Aus 767 (Edition 2)	Australia - Tasmania - Wardlaws Point to Eddystone Point	1:150 000	13 May 2022	New edition with general updating throughout; including latest bathymetric data. Chart Aus 767 Edition 1 dated 19 January 2007 is now superseded and must be withdrawn from use.
Aus 798 (Edition 3)	Australia - Tasmania - Eddystone Point to Stony Head	1:150 000	13 May 2022	New edition with general updating throughout; including latest bathymetric data. Chart Aus 798 Edition 2 dated 21 February 2003 is now superseded and must be withdrawn from use.
Aus 800 (Edition 2)	Australia - Tasmania - Furneaux Group	1:150 000	13 May 2022	New edition with general updating throughout; including latest bathymetric data. Chart Aus 800 Edition 1 dated 9 August 2002 is now superseded and must be withdrawn from use.

Chart permanently withdrawn

Charts listed above as withdrawn no longer meet chart carriage requirements and should be marked as "superseded" and replaced with the new chart/ new edition listed prior to passage through the area covered by the new chart.

When placing orders with a chart agent between notice of forthcoming edition and its publication, mariners should advise whether their order pertains to the current edition or the new edition.

For further details refer to the AHO website at www.hydro.gov.au for new edition and new chart stock arrival information.

376 AUSTRALIA - Products - New Charts and New Editions to be published shortly

Australian Hydrographic Office

New Charts to be published shortly

Chart	Title	Scale	Remarks
NIL			

New Editions to be published shortly

Chart	Title	Scale	Remarks
Aus 840	Australia - Papua New Guinea - Torres Strait - Arden Island to East Cay	1:150 000	New edition with general updating throughout; including latest bathymetric data.

Charts to be withdrawn without replacement 27 May 2022

Chart	Title	Scale	Remarks
Aus 722 Edition 5	Australia - North Coast - Northern Territory - Beagle Gulf and Clarence Strait	1:150 000	19 February 2021

377 AUSTRALIA - Product - Amendment to Australian National Tide Tables 2022

Australian Hydrographic Office

ANTT 2022

Page 310 <i>Amend</i>	KAI-MAITUINE RF-NE Mean Time Difference -0316 to -0056
Page 346 <i>Amend</i>	ABBOT POINT Correction to Chart Datum ENC AU5255P0 to AU5ABP01
Page 351 <i>Amend</i>	PORT ALMA Correction to Chart Datum ENC AU5265P0 to AU5PTL01
Page 354 <i>Amend</i>	VICTOR HARBOR Correction to Chart Datum AUS 347 NE 18 March 2022 0.0

378 AUSTRALIA - QUEENSLAND - Arafura Sea - Carpentaria Shoal - Depths

Australian Hydrographic Office

Aus 700 [148/2022]

Insert	accompanying block A	10° 45'.4 S	141° 10'.7 E
	accompanying block B	10° 47'.9 S	141° 31'.9 E
	accompanying ZOC diagram	11° 07'.7 S	140° 52'.4 E

379 AUSTRALIA - QUEENSLAND - Point Lookout - Scientific instrument eastwards

Maritime Safety Queensland Notice 183/2022

Aus 814 [311/2022]

Move	light buoy	27° 23'.0 S	153° 52'.6 E
	to	27° 23'.50 S	153° 52'.67 E

380 AUSTRALIA - NORTHERN TERRITORY - Bathurst Island - Cape Fourcroy - Wreck westwards

Geoscience Australia

Aus 309 [362/2021]

Insert	depth, 58m, enclosed by danger circle with legend, <i>Wk</i>	11° 46'.16 S	129° 45'.82 E
--------	--	--------------	---------------

Aus 4721 (INT 721) [313/2021]

Insert	depth, 58m, enclosed by danger circle with legend, <i>Wk</i>	11° 46'.2 S	129° 45'.8 E
--------	--	-------------	--------------

381 AUSTRALIA - NORTHERN TERRITORY - Goodrich Bank - Scientific instrument northwestwards

Australian Bureau of Meteorology

Aus 310 [1031/2020]

Move	light buoy	10° 24'.9 S	129° 59'.8 E
	to	10° 19'.14 S	129° 57'.10 E

382 AUSTRALIA - WESTERN AUSTRALIA - Fremantle - Artificial Reef

Department of Transport WA

Aus 117 [NE 4/3/2022]

Insert	fish haven with minimum depth, <u>0</u> ₆ <i>m</i> , centred on	32° 04'.928 S	115° 45'.035 E
--------	--	---------------	----------------

383 AUSTRALIA - WESTERN AUSTRALIA - Mermaid Reef - Light buoy

The University of Western Australia

Aus 325 [NE 2/4/2021]

Delete	light buoy	17° 05'.1 S	119° 37'.9 E
--------	------------	-------------	--------------

384 AUSTRALIA - WESTERN AUSTRALIA - Ocean Reef Boat Harbour - Buoy

Department of Transport WA Notice WA001/81/2022

Aus 754 [264/2022]

Delete	buoy	31° 45'.4 S	115° 43'.5 E
--------	------	-------------	--------------

385 AUSTRALIA - TASMANIA - Whale Head - Light

Australian Maritime Safety Authority Final ATH 8/2022

Aus 173 [NE 23/7/2021]

Amend	light range to 15M	43° 38'.2 S	146° 52'.3 E
-------	--------------------	-------------	--------------

Aus 794 [484/2020]

Amend	light range to 15M	43° 38'.2 S	146° 52'.3 E
-------	--------------------	-------------	--------------

Aus 795 [29/2020]

Amend	light range to 15M	43° 38'.2 S	146° 52'.3 E
-------	--------------------	-------------	--------------

Aus 4644 (INT 644) [314/2022]

Amend	light range to 15M	43° 38'.2 S	146° 52'.3 E
-------	--------------------	-------------	--------------

386(T)/2022 AUSTRALIA - NEW SOUTH WALES - Jervis Bay - Military exercise

Australian Maritime Safety Authority Auscoast Warning 94/2022

During the period 16 to 27 May 2022, a military exercise involving the use of AUVs will be conducted in an area bounded by the following positions:

35° 13'.6 S 150° 42'.3 E

35° 13'.6 S 151° 21'.4 E

35° 01'.5 S 151° 21'.4 E

35° 01'.5 S 150° 42'.3 E.

Mariners are advised to navigate with caution and keep well clear of the area.

Chart temporarily affected - Aus 489 - Aus 807 - Aus 808 - Aus 4643 (INT 643)

387(T)/2022 AUSTRALIA - NEW SOUTH WALES - Jervis Bay - Live firing completed

Former Notice - 352(T)/2022 is cancelled

Department of Defence 6 Squadron

Cancel this notice on receipt.

Chart formerly affected - Aus 489 - Aus 806 - Aus 807 - Aus 808 - Aus 4643 (INT 643)

388(P)/2022 AUSTRALIA - QUEENSLAND - Bundaberg - Burnett River - Shoaling

Australian Hydrographic Office

Latest survey indicates shoaler depths than those charted may exist in the Burnett River between Long Reach and Millaquin Reach.

The most significant shoals are as follows:

<i>Position</i>	<i>Depth</i>
24° 49'.11 S 152° 22'.08 E	-0.1m
24° 49'.94 S 152° 22'.31 E	0.8m.

Mariners are advised to navigate with caution in the area.

Charts will be updated in due course.

Chart which will be affected - Aus 242

389(T)/2022 AUSTRALIA - QUEENSLAND - Great Sandy Strait - Tin Can Inlet - Wreck

Maritime Safety Queensland Notice 207(T)/2022

A stranded wreck marked by a special light buoy, *Fl. Y.2-5s*, exists in position 25° 54'.14 S 153° 01'.40 E.

Mariners are advised to navigate with caution in the area.

Chart temporarily affected - Aus 817

390(T)/2022 AUSTRALIA - QUEENSLAND - Hinchinbrook Channel - Light buoy relit

Former Notice - 356(T)/2022 is cancelled

Maritime Safety Queensland

Cancel this notice on receipt.

Chart formerly affected - Aus 259

391(T)/2022 AUSTRALIA - QUEENSLAND - Shark Bay - Light buoy restored

Former Notice - 701(T)/2021 is cancelled

Maritime Safety Queensland

Cancel this notice on receipt.

Chart formerly affected - Aus 826

392(T)/2022 AUSTRALIA - QUEENSLAND - Shoalwater Bay - Live firing

Maritime Safety Queensland Notice 191(T)/2022

Live firing will be conducted in the marine component of the Shoalwater Bay training area during the period 23 May to 10 June 2022.

A marine danger area extends to all internal waters bounded by the following positions:

22° 29'.51 S 150° 24'.40 E

22° 33'.77 S 150° 32'.70 E

22° 33'.23 S 150° 35'.28 E.

All waters, creeks, beaches and other areas within the declared marine danger area are not available for access.

There will be a safe anchorage available at Fresh Water, Port Clinton, West Water Port Clinton, South Arm Port Clinton, Pearl Bay, Island Head Creek and Supply Bay Townshend Island.

Mariners are advised to keep clear of this area throughout the above times.

Chart temporarily affected - Aus 367 - Aus 490 - Aus 822

393(T)/2022 AUSTRALIA - QUEENSLAND - Shoalwater Bay - Live firing completed

Former Notice - 322(T)/2022 is cancelled

Maritime Safety Queensland Notice 169(T)/2022

Cancel this notice on receipt.

Chart formerly affected - Aus 248 - Aus 260 - Aus 367 - Aus 490 - Aus 820 - Aus 822

394(T)/2022 AUSTRALIA - NORTHERN TERRITORY - Darwin - Middle Ground - Light buoy restored

Former Notice - 213(T)/2021 is cancelled

Department of Infrastructure, Planning and Logistics NT

Cancel this notice on receipt.

Chart formerly affected - Aus 25

395(T)/2022 AUSTRALIA - WESTERN AUSTRALIA - Barrow Island - Maintenance operations

Chevron Australia Notice 1/2022

On or about 14 May 2022, vessels *CMV Athos*, *Arabella* and *Outer Limit* will be conducting maintenance operations on the CBM Tanker Mooring (20° 48'.8 S 115° 33'.2 E) which will include diving operations.

A 50m exclusion zone will exist around the dive vessel for vessels not involved in the maintenance operations..

All vessels will display appropriate lights and shapes and will monitor VHF Ch 10 and Ch 16.

Mariners are advised to navigate with caution in the area.

Chart temporarily affected - Aus 65 - Aus 327 - Aus 742 - Aus 743

396(T)/2022 AUSTRALIA - WESTERN AUSTRALIA - Barrow Island - Drill rig northeastwardsMODU *Noble Tom Prosser*

Drill rig *Noble Tom Prosser* is conducting drilling operations in position 20° 36'.32 S 115° 37'.00 E.

Chart temporarily affected - Aus 327 - Aus 742

397(T)/2022 AUSTRALIA - WESTERN AUSTRALIA - Barrow Island - Light beacon relit

Former Notice - 489(T)/2021 is cancelled

Department of Infrastructure, Planning and Logistics NT

Cancel this notice on receipt.

Chart formerly affected - Aus 65 - Aus 742

398(T)/2022 AUSTRALIA - WESTERN AUSTRALIA - Bedout Islet - Drill rig northwards moved

Former Notice - 331(T)/2022 is cancelled

MODU *Noble Tom Prosser*

Cancel this notice on receipt.

Chart formerly affected - Aus 325 - Aus 326

399(T)/2022 AUSTRALIA - WESTERN AUSTRALIA - Dampier Archipelago - Rosemary Island - Drill rig westwards moved

Former Notice - 181(T)/2022 is cancelled

AGR (Australia) Pty Ltd

Cancel this notice on receipt.

Chart formerly affected - Aus 57 - Aus 327 - Aus 742

400(T)/2022 AUSTRALIA - WESTERN AUSTRALIA - Exmouth Plateau - Drill rig

AGR (Australia) Pty Ltd

Drill rig *Valaris MS-1* is conducting drilling operations in position 20° 29'.23 S 113° 32'.64 E.

Chart temporarily affected - Aus 329

401(T)/2022 AUSTRALIA - WESTERN AUSTRALIA - Rosemary Island - Drill rig northwestwards

MODU *Valaris 107*

Drill rig *Valaris 107* is conducting drilling operations in position 20° 07'.60 S 116° 26'.70 E.

Chart temporarily affected - Aus 327 - Aus 742

402(T)/2022 AUSTRALIA - SOUTH AUSTRALIA - Spencer Gulf - Thistle Island - Defence trials

Department for Infrastructure and Transport SA Notice 9(T)/2022

Defence trials will be conducted within a 2M radius of position 35° 00'.10 S 136° 15'.14 E during the period 18 to 23 May 2022.

Mariners are advised that this area is strictly prohibited throughout the above times unless permission is granted by 'Navy Range Control' who can be contacted on VHF Ch 69.

Chart temporarily affected - Aus 343 - Aus 485 - Aus 776

403(T)/2022 AUSTRALIA - VICTORIA - Port Phillip - Pinnacle Channel - Light buoy restored northeastwards

Former Notice - 89(T)/2022 is cancelled

Parks Victoria Notice 169/2022

Cancel this notice on receipt.

Chart formerly affected - Aus 143

404(T)/2022 AUSTRALIA - VICTORIA - Seal Islands - Scientific instruments northeastwards

Star of the South

Scientific instruments, 10m below the surface, exist in the following positions:

38° 32'.89 S 147° 14'.35 E

38° 38'.13 S 147° 13'.39 E

38° 44'.56 S 147° 08'.19 E

38° 47'.43 S 146° 59'.98 E.

Chart temporarily affected - Aus 357 - Aus 802

405(T)/2022 AUSTRALIA - VICTORIA - Seal Islands - Scientific instruments northeastwards

Former Notice - 977(T)/2020 is cancelled
Star of the South

Cancel this notice on receipt.

Chart formerly affected - Aus 181 - Aus 357 - Aus 802

406(T)/2022 AUSTRALIA - VICTORIA - Western Port - North Arm - Light buoy restored

Former Notice - 372(T)/2022 is cancelled
Ports Victoria Notice 166/2022

Cancel this notice on receipt.

Chart formerly affected - Aus 151

407(T)/2022 AUSTRALIA - VICTORIA - Western Port - Watson Inlet - Beacon destroyed

Parks Victoria Notice 167(T)/2022

The port lateral beacon (38° 15'.11 S 145° 15'.82 E) has been destroyed.

Mariners are advised to navigate with caution in the area.

Chart temporarily affected - Aus 151

408(T)/2022 AUSTRALIA - TASMANIA - Port Fenton - Artificial reef northwestwards

Marine and Safety Tasmania Notice M152/2022

Works to establish an artificial reef are in progress in an area bounded by the following positions:

41° 07'.45 S 146° 13'.22 E

41° 07'.35 S 146° 13'.22 E

41° 07'.35 S 146° 13'.37 E

41° 07'.45 S 146° 13'.37 E.

A 300m exclusion zone exists around the works.

Mariners are advised to navigate with caution in the area.

Chart temporarily affected - Aus 164

409(T)/2022 AUSTRALIA - TASMANIA - River Tamar - Riverside North - Light unlit

Marine and Safety Tasmania Notice M164/2022

The light, Q(3) G.6s 2M No11 (41° 23'.62 S 147° 05'.73 E), is unlit.

Chart temporarily affected - Aus 168

410(P)/2022 AUSTRALIA - TASMANIA - Rocky Cape to East sandy Point - Shoaling
Australian Hydrographic Office

Latest survey indicates shoaler depths than those charted may exist in an area bounded by the high water line and the following positions:

40° 42'.39 S 145° 05'.11 E
40° 45'.45S 145° 20'.92 E
40° 56'.19S 145° 49'.10 E
41° 04'.76S 146° 11'.06 E
41° 06'.47S 146° 28'.51 E
41° 01'.97S 146° 42'.97 E
40° 56'.62S 146° 55'.07 E
40° 39'.89S 147° 58'.89 E.

Mariners are advised to navigate with caution in the area.

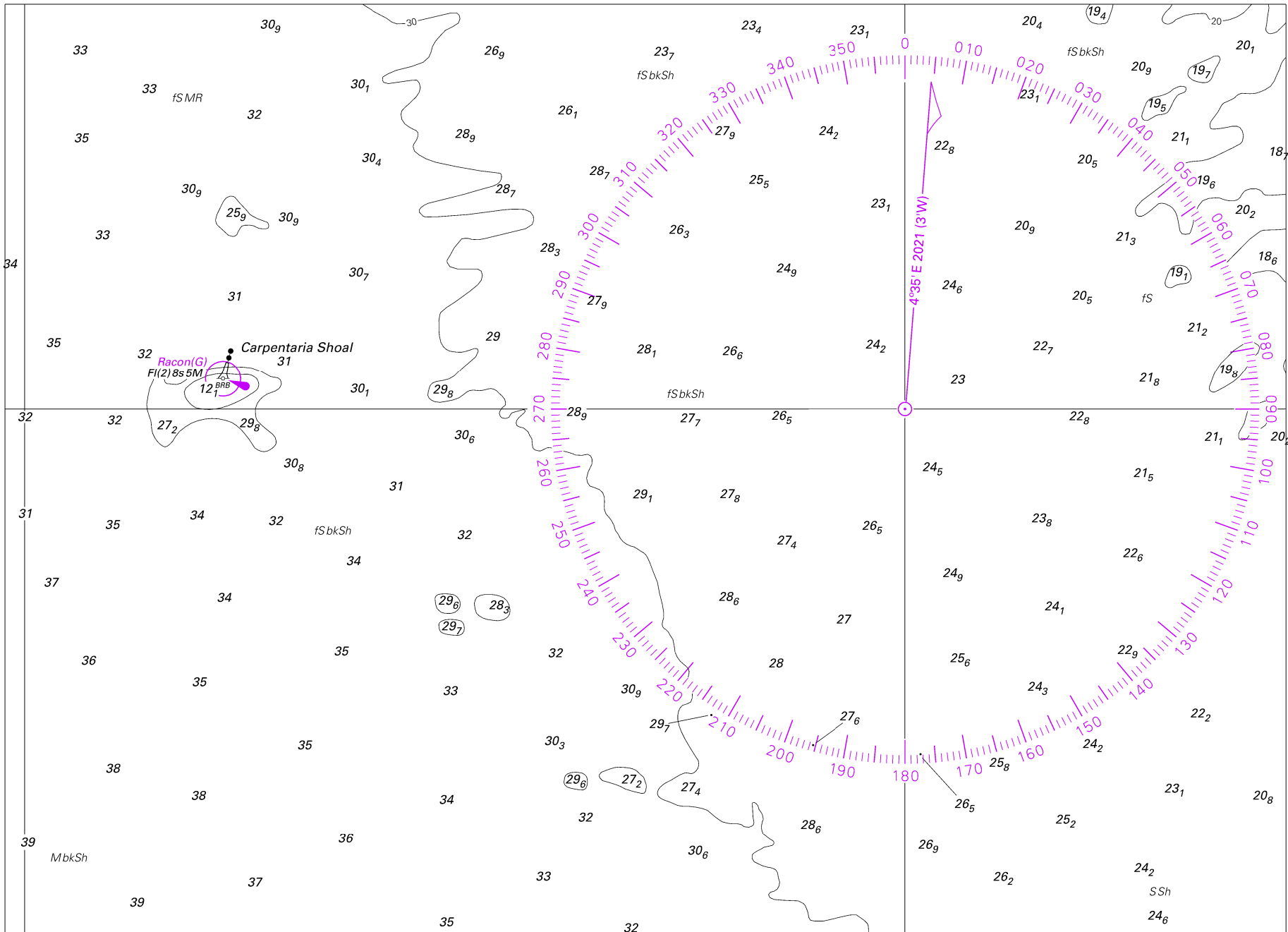
Electronic Navigation Charts (ENCs) have been updated, Paper Charts will be updated in due course.

Chart which will be affected - Aus 163 - Aus 164 - Aus 167 - Aus 178 - Aus 179 - Aus 487 - Aus 790 - Aus 798 - Aus 799 - Aus 800

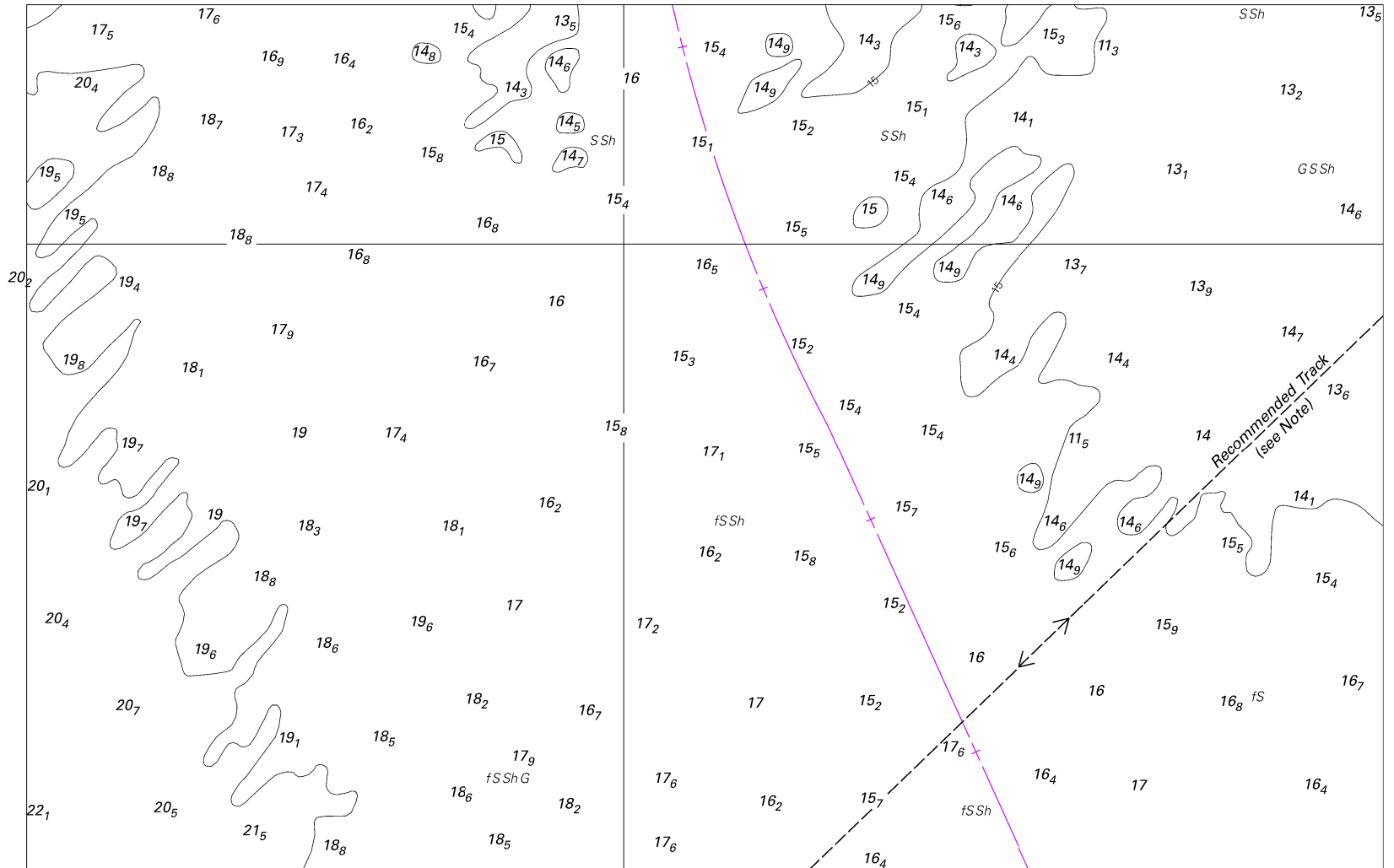
II

HYDROGRAPHIC REPORTS

NIL



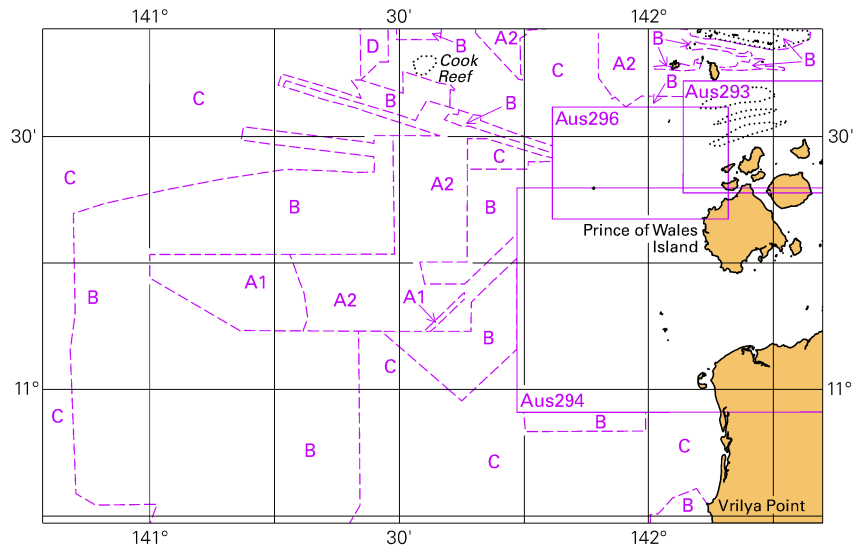
To accompany Australian Notice to Mariners 378/2022



Block B for chart Aus 700

To accompany Australian Notice to Mariners 378/2022

Zone of Confidence (ZOC) Diagram



Block for chart Aus 700

(103.2 x 65.2mm)