

**TEMPORARY AND PRELIMINARY NOTICES**  
**In force on 28 October 2022**

**NEW SOUTH WALES**

**709(T)/2016 AUSTRALIA - NEW SOUTH WALES - Cape Byron - Obstructions eastwards**  
HMAS *Gascoyne*

Obstructions exist in positions 28° 36'.20 S 153° 44'.30 E and 28° 36'.95 S 153° 44'.02 E.

**Chart temporarily affected - Aus 813**

**573(T)/2018 AUSTRALIA - NEW SOUTH WALES - Callo Point - Exclusion zone**  
NSW Roads and Maritime Services

A wreck exists off Callo Point and an exclusion zone exists bounded by the following positions:

36°36'.20 S 150°02'.45 E  
36°36'.23 S 150°04'.13 E  
36°37'.80 S 150°02'.58 E  
36°37'.81 S 150°01'.32 E.

Mariners are advised to navigate with caution.

**Chart temporarily affected - Aus 806**

**549(T)/2020 AUSTRALIA - NEW SOUTH WALES - Port Kembla - Exclusion zone**  
Port Authority of New South Wales

A 50m exclusion zone exists around the northern end of berth 206 (34° 28'.26 S 150° 54'.67 E).

Mariners are not to enter the area without obtaining permission from the Harbour Master or VTIC.

**Chart temporarily affected - Aus 195**

**602(T)/2020 AUSTRALIA - NEW SOUTH WALES - Ben Buckler - Scientific instruments southeastwards**  
Sydney Institute of Marine Science

Subsurface scientific instruments exist as follows:

<i>Position</i>	<i>Metres below surface</i>
33° 53'.74 S 151° 17'.30 E	27
33° 53'.91 S 151° 17'.75 E	41
33° 54'.16 S 151° 18'.18 E	58
33° 54'.42 S 151° 18'.60 E	63
33° 54'.69 S 151° 19'.06 E	64
33° 54'.95 S 151° 19'.52 E	64
33° 55'.21 S 151° 19'.94 E	71
33° 55'.46 S 151° 20'.37 E	70
33° 55'.71 S 151° 20'.79 E	80
33° 55'.98 S 151° 21'.25 E	80
33° 56'.24 S 151° 21'.71 E	82
33° 56'.49 S 151° 22'.16 E	87
33° 56'.75 S 151° 22'.59 E	90
33° 57'.06 S 151° 23'.02 E	98
33° 57'.32 S 151° 23'.47 E	119
33° 57'.84 S 151° 24'.32 E	127
34° 01'.16 S 151° 29'.70 E	145
34° 01'.46 S 151° 30'.18 E	149.

**Chart temporarily affected - Aus 200 - Aus 808 - Aus 809**

**604(T)/2020 AUSTRALIA - NEW SOUTH WALES - Jervis Bay - Hyams Beach - Light buoy**  
Australian Maritime Warfare Centre

A special light buoy, *Fl.Y.5s*, exists in position 35° 06'.23 S 150° 42'.85 E.

**Chart temporarily affected - Aus 807 - Aus 808**

**997(T)/2020 AUSTRALIA - NEW SOUTH WALES - Merimbula Bay to Broulee Island - Scientific instruments**  
Transport for NSW

Special light buoys, *Fl(5)Y.20s*, exist in the following positions:

35° 50'.9 S 150° 11'.3 E

35° 52'.8 S 150° 09'.7 E

36° 54'.5 S 149° 55'.0 E.

**Chart temporarily affected - Aus 806 - Aus 807**

**105(T)/2021 AUSTRALIA - NEW SOUTH WALES - Port Jackson - Berrys Bay - Jetties ruined**  
Transport for NSW , NSW Roads and Maritime Services

Jetties and piers are ruined, and partially submerged obstructions may exist in an area bounded by the coast and the following positions:

33° 50'.70 S 151° 11'.69 E

33° 50'.70 S 151° 11'.76 E

33° 50'.67 S 151° 11'.85 E

33° 50'.63 S 151° 11'.84 E.

A west cardinal light beacon, *Q(9)15s*, exists in position 33° 50'.59 S 151° 11'.50 E.

Mariners are advised to navigate with caution in the area.

**Chart temporarily affected - Aus 200**

**438(T)/2021 AUSTRALIA - TASMAN SEA - Tasman Basin - Light buoy off station**  
Australian Bureau of Meteorology

The special light buoy, *Fl.Y.2s* (44° 47'.0 S 161° 42'.0 E), is off station.

**Chart temporarily affected - Aus 4601 (INT 601)**

**591(T)/2021 AUSTRALIA - NEW SOUTH WALES - Clarence River - Light unlit**  
Port Authority of New South Wales Notice 4(T)/2021

The rear leading light, *F.Bu* (29° 22'.68 S 153° 16'.96 E), is unlit.

Mariners are advised to use the newly established lateral buoys to navigate in the area.

**Chart temporarily affected - Aus 222**

**594(T)/2021 AUSTRALIA - NEW SOUTH WALES - Port Kembla - Harbour works**  
Port Authority of New South Wales Notice 02/2021, 03/2021

Works associated with the construction of the LNG import facility are in progress at berth 101 (34° 27'.53 S 150° 53'.85 E).

A silt curtain, marked by special light buoys, has been established around the works in the following positions:

<i>Position</i>	<i>Remarks</i>
34° 27'.47 S 150° 53'.84 E	
34° 27'.48 S 150° 53'.83 E	special light buoy, Q.Y
34° 27'.49 S 150° 53'.81 E	
34° 27'.50 S 150° 53'.81 E	special light buoy, Q.Y
34° 27'.53 S 150° 53'.82 E	special light buoy, Q.Y
34° 27'.56 S 150° 53'.82 E	special light buoy, Q.Y
34° 27'.57 S 150° 53'.82 E	
34° 27'.60 S 150° 53'.83 E	special light buoy, Q.Y
34° 27'.61 S 150° 53'.87 E	special light buoy, Q.Y
34° 27'.62 S 150° 53'.89 E.	

Mariners are advised to navigate with caution in the area.

**Chart temporarily affected - Aus 195**

**694(T)/2021 AUSTRALIA - NEW SOUTH WALES - Port Jackson - Sydney Harbour Bridge - Harbour works**  
Port Authority of New South Wales Notice 16/2021

Maintenance works are in progress on the Sydney Harbour Bridge (33° 51'.14 S 151° 12'.64 E).

Vessels with large air draft should participate in Sydney VTS.

Mariners are advised to navigate with caution.

**Chart temporarily affected - Aus 200**

**880(T)/2021 AUSTRALIA - NEW SOUTH WALES - Cape Byron - Light buoy off station northwards**  
Byron Bay Deep Sea Fishing Club

The special light buoy, *Fl. Y. 5s* (28° 35'.40 S 153° 38'.11 E), is off station.

**Chart temporarily affected - Aus 813**

**61(T)/2022 AUSTRALIA - NEW SOUTH WALES - Port Jackson - Chowder Bay - Scientific instruments**  
*Former Notice - 524(T)/2021 is cancelled*  
Department of Defence

Subsurface scientific instruments, 2m above seabed, exist in the following positions:

33° 50.42' S 151° 15.42' E  
33° 50.39' S 151° 15.39' E  
33° 50.38' S 151° 15.43' E.

The area will be marked by buoys.

Mariners are advised to navigate with caution in the area.

**Chart temporarily affected - Aus 200**

**202(T)/2022 AUSTRALIA - NEW SOUTH WALES - Kiama - Fish aggregating device off station eastwards**  
Department of Primary Industries - Fisheries

The special light buoy, *Fl. Y. 5s FAD (Oct-May)* (34° 41'.0 S 150° 59'.5 E), is off station and in position 34° 41'.78 S 150° 59'.25 E.

**Chart temporarily affected - Aus 808**

**203(T)/2022 AUSTRALIA - NEW SOUTH WALES - Twofold Bay - Eden - Snug Cove - Harbour works; exclusion zone**  
Port Authority of New South Wales Notice 122/2022

Works associated with the construction of a wave attenuator are in progress. An exclusion zone marked by special light buoys, *Fl. Y. 3s*, exists in an area bounded by the following positions:

37° 04'.37 S 149° 54'.41 E  
37° 04'.37 S 149° 54'.39 E  
37° 04'.37 S 149° 54'.36 E  
37° 04'.39 S 149° 54'.32 E  
37° 04'.41 S 149° 54'.27 E  
37° 04'.43 S 149° 54'.22 E  
37° 04'.45 S 149° 54'.18 E  
37° 04'.43 S 149° 54'.15 E  
37° 04'.40 S 149° 54'.12 E  
37° 04'.37 S 149° 54'.09 E  
37° 04'.33 S 149° 54'.16 E  
37° 04'.29 S 149° 54'.22 E  
37° 04'.33 S 149° 54'.27 E  
37° 04'.31 S 149° 54'.33 E  
37° 04'.31 S 149° 54'.38 E  
37° 04'.35 S 149° 54'.42 E.

Mariners are advised to navigate with caution in the area.

**Chart temporarily affected - Aus 192**

**228(T)/2022 AUSTRALIA - NEW SOUTH WALES - Botany Bay - Port Botany - Light beacon destroyed**  
Port Authority of New South Wales Notice 14/2022

The east cardinal light beacon, Q(3)10s (33° 58'.37 S 151° 11'.76 E), has been destroyed; a light buoy, Q, exists in situ.

**Chart temporarily affected - Aus 198**

**229(P)/2022 AUSTRALIA - NEW SOUTH WALES - Clarence River - Shoaling**  
Port Authority of New South Wales

Latest survey indicates shoaler depths than those charted may exist in the entrance to Clarence River.

The most significant shoal being depth, 4.8m, in position 29° 25'.67 S 153° 22'.75 E.

Mariners are advised to navigate with caution in the area.

Charts will be updated in due course.

**Chart which will be affected - Aus 222 - Aus 812 - Aus 813**

**231(T)/2022 AUSTRALIA - TASMAN SEA - Tasman Basin - Light buoy off station**  
*Former Notice - 117(T)/2022 is cancelled*  
Australian Bureau of Meteorology

The special light buoy, Fl.Y.2s (46° 57'.4 S 160° 20'.6 E), is off station.

**Chart temporarily affected - Aus 4601 (INT 601)**

**272(T)/2022 AUSTRALIA - NEW SOUTH WALES - Narooma - Fish aggregating device off station eastwards**  
Department of Primary Industries - Fisheries

The special light buoy, Fl.Y.5s (Nov-May) (36° 13'.17 S 150° 17'.45 E), is off station and in position 36° 14'.94 S 150° 17'.65 E.

**Chart temporarily affected - Aus 806 - Aus 807**

**528(T)/2022 AUSTRALIA - NEW SOUTH WALES - Kingscliff - Harbour works**  
Harcan Marine

On or about 20 July 2022, works associated with the installation of a pipeline will begin in an area bounded by the following positions:

28° 15'.09 S 153° 34'.44 E

28° 15'.24 S 153° 34'.60 E

28° 14'.79 S 153° 35'.22 E

28° 14'.63 S 153° 35'.03 E.

A barge will be on site and the towing of a pipeline will occur from the beach to the barge.

Mariners are advised to navigate with caution in the area.

**Chart temporarily affected - Aus 813 - Aus 814**

**727(T)/2022 AUSTRALIA - NEW SOUTH WALES - Tathra to Seal Rocks - Obstructions**  
Transport for NSW Notice SY2028

Shipping containers and debris may exist along the coast and in offshore waters between Tathra (36° 43'.55 S 149° 59'.46 E) and Seal Rocks (32° 27'.86 S 152° 33'.22 E).

Mariners are advised to navigate with caution in the area.

**Chart temporarily affected - Aus 489 - Aus 806 - Aus 807 - Aus 808 - Aus 809 - Aus 810 - Aus 4601 (INT 601) - Aus 4602 (INT 602)**

## QUEENSLAND

### **605(T)/2016 AUSTRALIA - QUEENSLAND - Bundaberg - Middle Reach - Shoaling** Maritime Safety Queensland

Shoaling, with a least depth of *0.7m*, exists in the vicinity of position 24° 45'.27 S 152° 23'.82 E.

**Chart temporarily affected - Aus 242**

### **418(T)/2017 AUSTRALIA - QUEENSLAND - Daydream Island - Lights unlit; light buoys established** Maritime Safety Queensland Notice 179(T)/2017

The leading lights, *2F.Bu.5M* (20° 15'.10 S 148° 48'.87 E), are unlit.

A starboard lateral light buoy, *Fl.G.1-3s*, exists in positions 20° 14'.61 S 148° 49'.75 E.

A port lateral light buoy, *Fl.R.1-3s*, exists in positions 20° 14'.67 S 148° 49'.77 E.

**Chart temporarily affected - Aus 252 - Aus 253**

### **461(T)/2017 AUSTRALIA - QUEENSLAND - Bowen - Obstruction** Maritime Safety Queensland

An obstruction marked by a special light buoy, *Fl.Y.2-5s*, exists in position 20° 01'.40 S 148° 15'.26 E.

**Chart temporarily affected - Aus 268**

### **470(T)/2017 AUSTRALIA - QUEENSLAND - North Gardner Bank - Foul ground** Maritime Safety Queensland Notice 24/2017

A foul ground exists in position 24° 56'.30 S 153° 26.90 E.

**Chart temporarily affected - Aus 816**

### **523(P)/2017 AUSTRALIA - QUEENSLAND - Great Barrier Reef - Joist Reef to Hydrographers Passage - Shoaling** LADS Flight

Latest survey shows shoaler depths than those charted may exist in an area bounded by the following positions:

19° 27'.1 S 149° 38'.9 E

20° 12'.2 S 149° 39'.1 E

20° 12'.2 S 150° 18'.5 E

19° 39'.2 S 150° 18'.5 E

Charts will updated in due course.

**Chart which will be affected - Aus 821 - Aus 824 - Aus 825**

### **989(P)/2017 AUSTRALIA - CORAL SEA - Portlock Reefs - Reefs** LADS Flight

Latest survey shows uncharted reefs exist in area bounded by the following positions:

9° 33'.30 S 144° 46'.00 E

9° 33'.90 S 144° 42'.50 E

9° 36'.60 S 144° 42'.70 E

9° 37'.70 S 144° 45'.50 E.

Mariners are advised to navigate with caution in the area.

Charts will be updated in due course.

**Chart which will be affected - Aus 377**

### **27(T)/2018 AUSTRALIA - QUEENSLAND - Brisbane - Redcliffe Jetty - Harbour works**

Maritime Safety Queensland

Harbour works are in progress at the head of Redcliffe Jetty (27° 13'.567 S 153° 07'.047 E)

All vessels will display appropriate lights and symbols.

Mariners are advised to navigate with caution

**Chart temporarily affected - Aus 236**

**72(T)/2018 AUSTRALIA - QUEENSLAND - Fitzroy Island - Bird Rock - Light buoys**

*Former Notice - 29(T)/2018 is cancelled*

Maritime Safety Queensland Notice 503(T)/2017

Two special light buoys, *Fl. Y. 2-5s* exist in position 16° 55'.43 S 145° 59'.43 E.

**Chart temporarily affected - Aus 830**

**213(T)/2018 AUSTRALIA - QUEENSLAND - Bribie Island - South Point - Shoaling**

Maritime Safety Queensland

Shoaling exists at the southern end of Bribie Island, with a least depth of *0.5m* in position 27° 06'.18 S 153° 11'.24 E.

Mariners are advised to navigate with caution in the area.

**Chart temporarily affected - Aus 236**

**215(T)/2018 AUSTRALIA - QUEENSLAND - Hinchinbrook Channel - Oyster Point - Wreck**

Maritime Safety Queensland

A stranded wreck marked by a special light buoy, *Fl. Y. 3s*, exists in position 18° 16'.10 S 146° 03'.06 E.

**Chart temporarily affected - Aus 259**

**455(T)/2018 AUSTRALIA - QUEENSLAND - Bundaberg - Burnett River - Light beacon**

Maritime Safety Queensland Notice 178(T)/2018

A light beacon, *Fl. G. 4s*, exists in position 24° 45'.26 S 152° 23'.87 E.

**Chart temporarily affected - Aus 242**

**687(T)/2018 AUSTRALIA - QUEENSLAND - Moreton Bay - Rainbow Channel - Shoaling**

Maritime Safety Queensland Notice 279(T)/2018

Shoaling has been reported in Rainbow Channel between beacon Wanga Wallen North (27° 25'.35 S 153° 25'.10 E) and beacon Wanga Wallen South (27° 27'.17 S 153° 24'.97 E).

Mariners are advised to navigate with caution in the area.

**Chart temporarily affected - Aus 236**

**782(P)/2018 AUSTRALIA - QUEENSLAND - Flinders Reef - Shoaling**

Maritime Safety Queensland

Latest survey shows shoaler depths than those charted may exist in areas bounded by the following positions:

17° 41'.74 S 148° 35'.82 E

17° 37'.88 S 148° 36'.44 E

17° 32'.09 S 148° 34'.36 E

17° 22'.81 S 148° 25'.78 E

17° 30'.72 S 148° 16'.29 E

17° 43'.51 S 148° 20'.39 E

17° 44'.26 S 148° 27'.71 E.

and:

17° 49'.85 S 148° 23'.54 E

17° 53'.82 S 148° 29'.12 E

17° 53'.16 S 148° 32'.28 E  
17° 50'.79 S 148° 33'.13 E  
17° 47'.63 S 148° 29'.64 E  
17° 45'.93 S 148° 25'.72 E  
17° 46'.73 S 148° 23'.97 E.

Mariners are advised to navigate with extreme caution in the area.

Charts will be updated in due course.

**Chart which will be affected - Aus 615**

**1145(T)/2018 AUSTRALIA - QUEENSLAND - Moreton Bay - Raby Bay - Wreck**  
Maritime Safety Queensland Notice 468(T)/2018

A wreck marked by a special light buoy, *Fl.Y.2-5s*, exists in position 27° 30'.64 S 153° 16'.46 E.

**Chart temporarily affected - Aus 236**

**177(T)/2019 AUSTRALIA - QUEENSLAND - Red Island Point - Wreck**  
*Former Notice* - 164(T)/2018 is cancelled  
Maritime Safety Queensland Notice 83(T)/2019

A wreck marked by a special light buoy, *Fl.Y.4s*, exists in position 10° 50'.66 S 142° 22'.03 E.

**Chart temporarily affected - Aus 294**

**393(T)/2019 AUSTRALIA - QUEENSLAND - Weipa - South Channel - Harbour works**  
Maritime Safety Queensland Notice 167(T)/2019

Harbour works associated with beacon replacement are in progress in the South Channel in an area bounded by the following positions:

12°42'.72 S 141°39'.72 E  
12°40'.55 S 141°49'.73 E  
12°39'.83 S 141°49'.44 E  
12°41'.82 S 141°39'.04 E

Mariners are advised to navigate with caution in the area, and create No Wash in the vicinity of the barges and pile driving operations.

**Chart temporarily affected - Aus 4**

**440(T)/2019 AUSTRALIA - QUEENSLAND - Moreton Bay - Kounungai - Wreck; light buoy**  
Maritime Safety Queensland Notice 161(T)/2019

A wreck marked by a special light buoy, *Fl.Y.2-5s*, exists in position 27° 17'.00 S 153° 23'.00 E.

**Chart temporarily affected - Aus 236**

**488(T)/2019 AUSTRALIA - QUEENSLAND - Karumba - Wreck northwards**  
Maritime Safety Queensland Notice 188(T)/2019

A stranded wreck marked by a special light buoy, *Fl.Y.2-5s*, exists in position 17° 15'.36 S 140° 53'.89 E.

**Chart temporarily affected - Aus 303**

**494(P)/2019 AUSTRALIA - CORAL SEA - Kenn Reefs and Frederick Reefs - Shoaling**  
LADS

Latest surveys indicate shoaler depths than those currently charted exist in an area bounded by the following positions:

21° 16'.05 S 155° 42'.52 E  
21° 16'.64 S 155° 44'.44 E  
21° 13'.83 S 155° 46'.76 E  
21° 11'.42 S 155° 45'.73 E.

and

21° 01'.09 S 154° 21'.18 E  
21° 01'.32 S 154° 23'.02 E  
20° 59'.87 S 154° 24'.06 E  
20° 55'.25 S 154° 23'.85 E  
20° 54'.42 S 154° 23'.35 E  
20° 58'.22 S 154° 20'.72 E.

Charts will be updated in due course. Mariners are advised to navigate with caution.

**Chart which will be affected - Aus 611 - Aus 612**

**548(P)/2019 AUSTRALIA - QUEENSLAND - Hydrographers Passage - Shoaling**  
LADS Flight

Latest survey shows shoaler depths than those charted may exist in an area bounded by the following positions:

20° 36'.52 S 150° 04'.39 E  
20° 30'.63 S 150° 17'.03 E  
20° 23'.93 S 150° 16'.63 E  
20° 06'.15 S 150° 04'.79 E  
20° 11'.27 S 150° 00'.18 E  
20° 21'.88 S 150° 04'.70 E  
20° 27'.57 S 150° 09'.82 E  
20° 32'.65 S 150° 01'.91 E.

Mariners are advised to navigate with caution in the area.

Charts will be updated in due course.

**Chart which will be affected - Aus 821 - Aus 824**

**603(T)/2019 AUSTRALIA - QUEENSLAND - Weipa - Albatross Bay - Scientific instruments**  
Maritime Safety Queensland Notice 242(T)/2019

Special light buoys, *Fl. Y. 6s*, exist in the following positions:

12° 40'.10 S 141° 50'.77 E  
12° 42'.09 S 141° 52'.00 E  
12° 40'.42 S 141° 46'.62 E.

**Chart temporarily affected - Aus 4**

**716(T)/2019 AUSTRALIA - QUEENSLAND - Daintree River - Light buoy withdrawn**  
Maritime Safety Queensland Notice 302(T)/2019

The safe water light buoy, *LFl. 10s* (16° 18'.93 S 145° 27'.16 E), has been temporarily withdrawn.

**Chart temporarily affected - Aus 831**

**723(T)/2019 AUSTRALIA - QUEENSLAND - Weipa - Tide gauge; light buoy**  
Maritime Safety Queensland Notice 319(T)/2019

A tide gauge marked by a special light buoy, *Fl. Y. 6s*, exists in position 12° 44'.72 S 141° 29'.88 E.

**Chart temporarily affected - Aus 4 - Aus 301**

**951(T)/2019 AUSTRALIA - QUEENSLAND - Abbot Point - Light beacon unlit; light buoy established**  
*Former Notice - 369(T)/2017 is cancelled*  
Maritime Safety Queensland

The east cardinal light beacon, *Q(3)10s* (19° 51'.12 S 148° 03'.89 E), is unlit.

A special conical light buoy, *Fl. Y. 1-5s*, exists in position 19° 51'.05 S 148° 03'.95 E.

**Chart temporarily affected - Aus 255 - Aus 826**



**105(T)/2020 AUSTRALIA - QUEENSLAND - Cape Bowling Green - Obstruction; light buoy**  
Maritime Safety Queensland Notice 19(T)/2020

An obstruction marked by a special light buoy, *Fl.Y.2-5s*, exists in position 19° 18'.26 S 147° 22'.96 E.

**Chart temporarily affected - Aus 827**

**249(T)/2020 AUSTRALIA - QUEENSLAND - Richardson Reef to Newman Reef - Scientific instruments**  
Maritime Safety Queensland

A scientific instrument marked by an orange buoy exists in position 10° 07'.33 S 143° 02'.20 E.

A scientific instrument marked by a yellow buoy exists in position 10° 03'.33 S 143° 10'.18 E.

**Chart temporarily affected - Aus 837 - Aus 839**

**286(T)/2020 AUSTRALIA - QUEENSLAND - Laguna Quays - Shoaling; nav aids**  
*Former Notice - 917(T)/2017 is cancelled*  
Maritime Safety Queensland Notice 103(T)/2020

Shoaling exists within the entrance channel and waterways around the Laguna Quays Marina (20° 36'.0 S 148° 41'.0 E).

Nav aids marking the entrance channel and in the marina may not be operational.

Mariners are advised to navigate with caution in the area.

**Chart temporarily affected - Aus 252**

**429(T)/2020 AUSTRALIA - QUEENSLAND - Mackay - Obstruction; light buoy**  
Maritime Safety Queensland Notice 183/2020

An obstruction marked by a special light buoy exists in position 21° 06'.43 S 149° 13'.52 E.

**Chart temporarily affected - Aus 250**

**457(T)/2020 AUSTRALIA - QUEENSLAND - Cape Bowling Green - Obstruction southeastwards**  
Maritime Safety Queensland Notice 190(T)/2020

An obstruction, with least depth *15m*, exists in position 19° 20'.27 S 147° 35'.97 E.

Mariners are advised to navigate with caution in the area.

**Chart temporarily affected - Aus 826 - Aus 827**

**555(T)/2020 AUSTRALIA - QUEENSLAND - Gold Coast - Scientific instrument**  
Maritime Safety Queensland Notice 84(T)/2020

A special light buoy, *Fl(5)Y.20s*, exists in position 27° 58'.18 S 153° 26'.50 E.

**Chart temporarily affected - Aus 814**

**561(T)/2020 AUSTRALIA - QUEENSLAND - The Broadwater - South Channel - Light buoys**  
Maritime Safety Queensland Notice 35(T)/2019

Special light buoys, *Fl.Y.3s*, exist in the following positions:

27° 56'.56 S 153° 25'.23 E

27° 56'.63 S 153° 25'.24 E

27° 56'.71 S 153° 25'.24 E

27° 56'.86 S 153° 25'.25 E

27° 56'.92 S 153° 25'.25 E.

**Chart temporarily affected - Aus 814**

**998(T)/2020 AUSTRALIA - QUEENSLAND - Boyne River - Light buoy off station**

Maritime Safety Queensland Notice 423(T)/2020

The special light buoy, *Fl.Y.2-5s* (23° 55'.64 S 151° 22'.05 E), is off station and in position 23° 56'.18 S 151° 21'.40 E.

**Chart temporarily affected - Aus 246**

**1008(T)/2020 AUSTRALIA - QUEENSLAND - Townsville - Wreck**

Maritime Safety Queensland Notice 427(T)/2020

A wreck marked by a special light buoy, *Q.Y.*, exists in position 19° 14'.91 S 146° 49'.57 E.

Mariners are advised to navigate with caution in the area.

**Chart temporarily affected - Aus 256**

**1049(P)/2020 AUSTRALIA - TORRES STRAIT - Deliverance Island - Shoaling**

HMAS *Albany*

Latest survey shows shoaling exists as follows:

Depth	Position
1.1m	9° 32'.89 S 141° 27'.03 E
3.6m	9° 32'.22 S 141° 27'.73 E.

Mariners are advised to navigate with caution in the area.

Charts will be updated in due course.

**Chart which will be affected - Aus 842**

**19(T)/2021 AUSTRALIA - QUEENSLAND - Thud Point - Scientific instrument**

Maritime Safety Queensland Notice 4(T)/2021

A special light buoy, *Fl.Y.6s*, exists in position 13° 03'.14 S 141° 32'.82 E.

**Chart temporarily affected - Aus 301**

**21(T)/2021 AUSTRALIA - CORAL SEA - Middleton Reef - Unexploded ordnance**

Parks Australia

An exclusion zone exists in an area bounded by the following positions:

29° 27'.12 S 159° 02'.92 E
29° 26'.58 S 159° 02'.92 E
29° 26'.58 S 159° 03'.55 E
29° 27'.12 S 159° 03'.55 E.

Unexploded ordnance may exist in the area and mariners are advised to navigate with caution.

**Chart temporarily affected - Aus 618**

**62(T)/2021 AUSTRALIA - QUEENSLAND - Gladstone - South Trees Island - Scientific instrument**

Maritime Safety Queensland Notice 171(T)/2020

A scientific instrument marked by a light buoy, *Fl.Y.6s*, exists in position 23° 51'.71 S 151° 19'.62 E.

**Chart temporarily affected - Aus 245 - Aus 246**

**64(T)/2021 AUSTRALIA - QUEENSLAND - Gladstone - Auckland Point Wharves - Harbour works**

Maritime Safety Queensland 360(T)/2019

Construction of a mooring dolphin is in progress off the eastern end of berth No 4 (23° 50'.02 S 151° 15'.91 E) by vessel *AMS Shine* and the barge *M1201* and support vessels.

Vessels and hazards will display appropriate lights and shapes.

Vessels will monitor VHF Ch 13.

Mariners are advised to navigate with caution in the area.

**Chart temporarily affected - Aus 245**

**197(T)/2021 AUSTRALIA - QUEENSLAND - Moreton Bay - Peel Island - Wreck**  
Maritime Safety Queensland , G Luck

A wreck exists in position 27° 30'.30 S 153° 19'.33 E.

Mariners are advised to navigate with caution in the area.

**Chart temporarily affected - Aus 236**

**247(T)/2021 AUSTRALIA - QUEENSLAND - Cape Ferguson - Scientific instrument**  
Australian Institute of Marine Science

A special spar light buoy, Q(4)Y.18s, exists in position 19° 16'.52 S 147° 03'.84 E.

**Chart temporarily affected - Aus 256**

**249(P)/2021 AUSTRALIA - QUEENSLAND - Holt Island to Hexham Island - Shoaling**  
LADS Flight

Latest survey shows shoaler depths than those charted may exist in areas bounded by the following positions:

22° 11'.75 S 150° 22'.51 E  
22° 11'.90 S 150° 22'.99 E  
22° 13'.77 S 150° 22'.25 E  
22° 13'.51 S 150° 21'.60 E;  
and  
22° 00'.22 S 150° 23'.51 E  
22° 01'.04 S 150° 23'.61 E  
22° 02'.68 S 150° 18'.70 E  
22° 01'.44 S 150° 16'.29 E  
22° 00'.19 S 150° 21'.01 E.

Mariners are advised to navigate with caution in the area.

Charts will be updated in due course.

**Chart which will be affected - Aus 260 - Aus 367 - Aus 822**

**251(T)/2021 AUSTRALIA - QUEENSLAND - Moreton Bay - Rainbow Channel - Wanga Wallen Bank - Wreck; light buoy**  
Maritime Safety Queensland Notice 80(T)/2021

A wreck marked by a special light buoy, Fl.Y.2-5s, exists in position 27° 26'.40 S 153° 25'.33 E.

**Chart temporarily affected - Aus 236**

**330(T)/2021 AUSTRALIA - QUEENSLAND - Moreton Bay - Lamb Island - Wreck; light buoy**  
Maritime Safety Queensland Notice 104(T)/2021

A wreck marked by a special light buoy, Fl.Y.2-5s, exists in position 27° 37'.89 S 153° 22'.51 E.

**Chart temporarily affected - Aus 236**

**332(T)/2021 AUSTRALIA - QUEENSLAND - Poll Islet - Wreck**  
Maritime Safety Queensland , Australian Border Force

A stranded wreck exists in position 10° 15'.17 S 142° 49'.58 E.

**Chart temporarily affected - Aus 839 - Aus 841**

**336(T)/2021 AUSTRALIA - QUEENSLAND - Townsville - Ross River - Wreck; light buoy**  
Maritime Safety Queensland Notice 127(T)/2021

A wreck marked by a special light buoy, Q.Y, exists in position 19° 16'.52 S 146° 49'.94 E.

**Chart temporarily affected - Aus 256**

**337(P)/2021 AUSTRALIA - TORRES STRAIT - Boigu Island - Shoaling**  
HMAS *Leeuwin*

Latest survey shows shoaler depths than those charted may exist in areas bounded by the following positions:

9° 14'.38 S 142° 15'.82 E

9° 15'.78 S 142° 19'.88 E

9° 15'.49 S 142° 20'.00 E

9° 13'.58 S 142° 16'.26 E;

and

9° 12'.49 S 142° 15'.50 E

9° 12'.33 S 142° 13'.73 E

9° 13'.16 S 142° 13'.24 E

9° 13'.20 S 142° 15'.21 E.

Mariners are advised to navigate with caution in the area.

Charts will be updated in due course.

**Chart which will be affected - Aus 841**

**378(T)/2021 AUSTRALIA - QUEENSLAND - Karumba - Shoaling**  
*Former Notice - 819(T)/2020 is cancelled*  
Maritime Safety Queensland Notice 141/2021

Shoaling exists in the entrance channel between beacon No8 (17° 26'.36 S 140° 44'.73 E) and beacon No10 (17° 26'.65 S 140° 45'.32 E).

Mariners should not navigate along the charted recommended track between beacons No8 and No10 and instead should navigate between the Elbow Bank special light buoys, *Fl.Y.2-5s*, to follow the change in channel position.

Mariners are advised to navigate with caution in the area.

**Chart temporarily affected - Aus 6**

**380(T)/2021 AUSTRALIA - QUEENSLAND - North Stradbroke Island - Polka Point - Obstruction**  
Maritime Safety Queensland Notice 142(T)/2021

An obstruction exists in position 27° 29'.52 S 153° 24'.09 E.

Mariners are advised to pass north of the obstruction and to navigate with caution in the area.

**Chart temporarily affected - Aus 236**

**562(T)/2021 AUSTRALIA - QUEENSLAND - Lucinda - Dungeness Bank - Light buoy**  
Maritime Safety Queensland Notice 225(T)/2021

The special light buoy, *Fl.Y.2s* (18° 30'.75 S 146° 19'.09 E), has been temporarily repositioned to 18° 31'.00 S 146° 19'.28 E.

The light buoy marks the current entrance to the channel.

**Chart temporarily affected - Aus 267**

**639(T)/2021 AUSTRALIA - QUEENSLAND - Bowen - Port Denison - Light buoy off station**  
Maritime Safety Queensland Notice 260(T)/2021

The starboard lateral light buoy, *Fl.G.2-5s* (20° 01'.79 S 148° 16'.04 E), is off station.

**Chart temporarily affected - Aus 268**

**642(T)/2021 AUSTRALIA - QUEENSLAND - Moreton Bay - Redland Bay - Scientific instrument**

Maritime Safety Queensland Notice 256/2021

A special light buoy, *Fl.Y.2.5s*, exists in position 27° 36'.92 S 153° 18'.85 E.

**Chart temporarily affected - Aus 236**

**697(T)/2021 AUSTRALIA - QUEENSLAND - Bowen - Port Denison - Light buoy unlit**

Maritime Safety Queensland Notice 274(T)/2021

The port lateral light buoy, *Q.R* (20° 01'.36 S 148° 16'.80 E), is unlit.

**Chart temporarily affected - Aus 268**

**698(T)/2021 AUSTRALIA - QUEENSLAND - Bowen - Wreck**

Maritime Safety Queensland Notice 294(T)/2021

A wreck marked by a special light buoy, *Q.Y*, exists in position 20° 01'.33 S 148° 15'.56 E.

Mariners are advised to navigate with caution in the area.

**Chart temporarily affected - Aus 268**

**700(T)/2021 AUSTRALIA - QUEENSLAND - Hay Point - Dredging operations**

Maritime Safety Queensland Notices 293(T)/2021

Vessels *Pacific Tiger* and *Sounds Good* are conducting dredging operations at the DBCT berths (21° 14'.97 S 149° 18'.33 E).

Vessels will display appropriate lights and shapes and will monitor VHF Ch 10 and Ch 16.

Mariners are advised to navigate with caution in the area.

**Chart temporarily affected - Aus 249 - Aus 250**

**703(T)/2021 AUSTRALIA - QUEENSLAND - Townsville - Harbour works**

Maritime Safety Queensland Notice 278(T)/2020

Harbour works associated with the construction of a rock wall are in progress in an area bounded by the coastline and the following positions:

<i>Position</i>	<i>Remarks</i>
19° 14'.78 S 146° 50'.33 E	
19° 14'.57 S 146° 50'.47 E	special light buoy, <i>Fl.Y.2.5s</i>
19° 14'.62 S 146° 50'.61 E	

Uncharted rocks resulting from the works will present a hazard to navigation in the area.

Mariners are advised not to anchor within or navigate through the area.

**Chart temporarily affected - Aus 256 - Aus 827**

**737(T)/2021 AUSTRALIA - QUEENSLAND - Cleveland Bay - Scientific instruments**

Maritime Safety Queensland Notice 300(T)/2021

Special light buoys, *Fl.Y.2.5s*, exist in the following positions:

19° 02'.34 S 146° 36'.93 E  
19° 06'.45 S 146° 32'.48 E  
19° 07'.34 S 146° 52'.92 E  
19° 09'.32 S 146° 52'.10 E  
19° 11'.20 S 146° 50'.34 E  
19° 11'.37 S 146° 49'.09 E  
19° 11'.81 S 146° 49'.07 E  
19° 12'.19 S 146° 59'.41 E  
19° 12'.79 S 146° 47'.55 E.

19° 13'.58 S 146° 56'.98 E  
19° 14'.05 S 146° 49'.50 E  
19° 14'.80 S 146° 48'.90 E.

**Chart temporarily affected - Aus 256 - Aus 827**

**738(T)/2021 AUSTRALIA - QUEENSLAND - Fitzroy River - Middle Channel - Scientific instrument**  
Maritime Safety Queensland Notice 31/2021

A special light buoy, Q.Y, exists in position 23° 28'.23 S 150° 56'.37 E.

**Chart temporarily affected - Aus 265**

**741(T)/2021 AUSTRALIA - QUEENSLAND - Fraser Island - Elbow Point - Shoaling**  
Navionics

Depths of less than 1m have been reported in an area bounded by the following positions:

25° 44'.40 S 152° 59'.29 E  
25° 44'.71 S 152° 59'.37 E  
25° 44'.89 S 153° 00'.30 E  
25° 44'.66 S 153° 00'.38 E  
25° 44'.40 S 152° 59'.77 E.

Mariners are advised to navigate with caution in the area.

Charts will be updated in due course.

**Chart temporarily affected - Aus 817**

**744(T)/2021 AUSTRALIA - QUEENSLAND - Gladstone - Scientific instruments**  
Maritime Safety Queensland Notice 390(T)/2020

Special cylindrical light buoys, *Fl.Y.6s*, exist in the following positions:

23° 45'.53 S 151° 09'.49 E  
23° 45'.92 S 151° 10'.87 E  
23° 44'.71 S 151° 09'.62 E.

**Chart temporarily affected - Aus 245**

**795(T)/2021 AUSTRALIA - TORRES STRAIT - Yorke Islands to Boigu Island - Scientific instruments**  
Maritime Safety Queensland Notice 330(T)/2021

Special light buoys, *Fl(5)Y.20s*, exist in the following positions:

9° 13'.27 S 142° 13'.24 E  
9° 44'.85 S 143° 24'.09 E.

**Chart temporarily affected - Aus 377 - Aus 840 - Aus 841**

**818(T)/2021 AUSTRALIA - QUEENSLAND - Bowen - Port Denison - Light buoy off station**  
Maritime Safety Queensland Notice 339(T)/2021

The starboard lateral light buoy, *Fl.G.3s M3* (20° 02'.78 S 148° 16'.26 E), is off station.

**Chart temporarily affected - Aus 268**

**842(T)/2021 AUSTRALIA - QUEENSLAND - Great Sandy Strait - Light buoys**  
*Former Notice - 754(T)/2021 is cancelled*  
Maritime Safety Queensland Notice 61(T)/2016, 146/2017, 145(T)/2021; 70/2020

Light buoys exist as follows:

Number	Position	Characteristics
S3	25° 12'.70 S 152° 54'.75 E	<i>Fl.G.2·5s</i>
NG1	25° 20'.20 S 153° 01'.40 E	<i>Fl.G.2·5s.</i>

**Chart temporarily affected - Aus 817**

**843(T)/2021 AUSTRALIA - QUEENSLAND - Mermaid Beach - Scientific instrument**

*Former Notice* - 598(T)/2021 is cancelled

Maritime Safety Queensland Notice 344(T)/2021

A special conical light buoy, *Fl(5)Y.20s*, exists in position 28° 02'.26 S 153° 27'.11 E.

**Chart temporarily affected - Aus 814**

**889(T)/2021 AUSTRALIA - QUEENSLAND - Point Lookout - Light buoy repositioned eastwards**

Maritime Safety Queensland Notice 372/2021

The special light buoy, *Fl(5)Y.20s* (27° 23'.04 S 153° 52'.63 E), has been temporarily repositioned to 27° 23'.56 S 153° 52'.68 E.

**Chart temporarily affected - Aus 814**

**980(T)/2021 AUSTRALIA - QUEENSLAND - Fitzroy River - South Channel - Scientific instrument**

*Former Notice* - 661(T)/2016 is cancelled

Maritime Safety Queensland Notice 400(T)/2021

A special light buoy, *Fl.Y.4s*, exists in position 23° 30'.23 S 150° 45'.83 E.

**Chart temporarily affected - Aus 819**

**981(T)/2021 AUSTRALIA - QUEENSLAND - Hay Point - Exclusion zone**

Maritime Safety Queensland Notice 398(T)/2021

An exclusion zone exists in an area bounded by the coast and the following positions:

21° 16'.40 S 149° 17'.85 E

21° 15'.96 S 149° 18'.67 E

21° 16'.25 S 149° 18'.86 E

21° 16'.16 S 149° 19'.02 E

21° 15'.91 S 149° 18'.86 E

21° 15'.69 S 149° 18'.83 E

21° 15'.34 S 149° 18'.61 E

21° 15'.59 S 149° 18'.14 E

21° 15'.83 S 149° 18'.29 E

21° 16'.25 S 149° 17'.51 E.

Only authorised vessels are permitted to enter.

Mariners are advised to navigate with caution in the area.

**Chart temporarily affected - Aus 249 - Aus 250 - Aus 823**

**1025(T)/2021 AUSTRALIA - TORRES STRAIT - Great North East Channel - Coconut Island - Scientific instrument**

*Former Notice* - 486(T)/2021 is cancelled

Maritime Safety Queensland Notice 427(T)/2021

A special light buoy, *Fl(5)Y.20s*, exists in position 10° 03'.18 S 143° 03'.12 E.

**Chart temporarily affected - Aus 839**

**25(T)/2022 AUSTRALIA - QUEENSLAND - Magnetic Island - Cockle Bay - Scientific instrument**

Maritime Safety Queensland Notice 456(T)/2021

A scientific instrument marked by a special light beacon, *Fl.Y.2.5s*, exists in position 19° 10'.15 S 146° 48'.55 E.

**Chart temporarily affected - Aus 256 - Aus 827**

**26(T)/2022 AUSTRALIA - QUEENSLAND - Townsville - Obstruction; light buoy**

Maritime Safety Queensland Notice 461(T)/2021

An obstruction marked by a special light buoy, *Fl.Y.2-5s*, exists in position 19° 14'.66 S 146° 49'.89 E.

**Chart temporarily affected - Aus 256**

**27(P)/2022 AUSTRALIA - TORRES STRAIT - Boigu Island - Shoaling**

Australian Institute of Marine Science

The drying area (9° 15'.51 S 142° 06'.09 E) extends 0.27M northwest to position 9° 15'.31 S 142° 05'.91 E.

The reef (9° 11'.96 S 142° 10'.56 E) extends 0.27M south to position 9° 12'.23 S 142° 10'.56 E.

Mariners are advised to navigate with caution in the area.

Charts will be updated in due course.

**Chart which will be affected - Aus 841**

**28(P)/2022 AUSTRALIA - TORRES STRAIT - Prince of Wales Channel - Herald Patches - Shoaling**

EGS Survey Pty Ltd

Latest survey indicates depths up to 1.5m shoaler than those charted may exist in areas bounded by the following positions:

10° 30'.40 S 142° 20'.26 E

10° 30'.96 S 142° 19'.80 E.

Mariners are advised to navigate with caution in the area.

Charts will be updated in due course.

**Chart which will be affected - Aus 293 - Aus 700 - Aus 839 - Aus 841**

**62(T)/2022 AUSTRALIA - QUEENSLAND - Abbot Bay - Light buoys**

Maritime Safety Queensland Notice 01(T)/2022

Light buoys exist as follows:

<i>Position</i>	<i>Characteristics</i>
19° 50'.60 S 148° 01'.00 E	<i>Fl.Y.4s</i>
19° 50'.50 S 148° 01'.25 E	<i>Fl.Y.4s.</i>

**Chart temporarily affected - Aus 255 - Aus 826**

**64(T)/2022 AUSTRALIA - QUEENSLAND - Great Sandy Strait - Mary River - Wreck**

Maritime Safety Queensland Notice 22(T)/2022

A wreck marked by a special light buoy, *Fl.Y.2-5s*, exists in position 25° 29'.547 S 152° 49'.670 E.

Mariners are advised to navigate with caution in the area.

**Chart temporarily affected - Aus 817**

**68(T)/2022 AUSTRALIA - QUEENSLAND - Moreton Bay - Redland Bay - Light buoy**

Maritime Safety Queensland Notice 13(T)/2022

An submerged wreck marked by a special light buoy, *Fl.Y.2-5s*, exists in position 27° 37'.77 S 153° 18'.95 E.

Mariners are advised to navigate with caution in the area.

**Chart temporarily affected - Aus 236 - Aus 814**

**164(T)/2022 AUSTRALIA - QUEENSLAND - Moreton Bay - Rous Channel - Light beacon destroyed**

Maritime Safety Queensland Notice 58(T)/2022

The light beacon, *Fl.G.2-5s No17* (27° 24'.16 S 153° 20'.44 E), has been destroyed.

**Chart temporarily affected - Aus 236**



**167(T)/2022 AUSTRALIA - QUEENSLAND - Moreton Bay - St Helena Island - Light beacon destroyed**  
Maritime Safety Queensland Notice 57(T)/2022

The north cardinal light beacon, Q (27° 22'.20 S 153° 14'.20 E), has been destroyed.

**Chart temporarily affected - Aus 236**

**236(T)/2022 AUSTRALIA - QUEENSLAND - Bundaberg - Burnett River - Light buoy off station**  
Maritime Safety Queensland Notice 109(T)/2022

The starboard lateral light buoy, *Fl.G.4s BR5* (24° 48'.78 S 152° 21'.77 E), is off station.

**Chart temporarily affected - Aus 242**

**237(T)/2022 AUSTRALIA - QUEENSLAND - Cape Flattery - Scientific instrument**  
Maritime Safety Queensland Notice 125(T)/2022

A special spherical light buoy, *Fl(5)Y.20s*, exists in position 14° 55'.63 S 145° 20'.65 E.

**Chart temporarily affected - Aus 832**

**238(T)/2022 AUSTRALIA - QUEENSLAND - Hay Point - Light buoys**  
Maritime Safety Queensland Notice 118(T)/2022

Special light buoys, *Fl.Y.3s*, exist in positions 21° 17'.46 S 149° 17'.88 E and 21° 17'.54 S 149° 17'.95 E.

**Chart temporarily affected - Aus 250**

**277(T)/2022 AUSTRALIA - QUEENSLAND - Cairns - Trinity Inlet - Wreck**  
Maritime Safety Queensland Notice 156/2022

A wreck marked by a light, *Fl.Y.3s*, exists in position 16° 56'.70 S 145° 46'.98 E.

Mariners are advised to navigate with caution in the area.

**Chart temporarily affected - Aus 262**

**323(T)/2022 AUSTRALIA - QUEENSLAND - Taylors Beach - Light buoy withdrawn; light buoy established**  
Maritime Safety Queensland Notice 158(T)/2022

The safe water light buoy, *Iso.2s* (18° 36'.90 S 146° 21'.55 E), has been temporarily withdrawn; a port lateral light buoy, *Fl.R.2·5s*, exists in situ.

**Chart temporarily affected - Aus 827 - Aus 828**

**358(T)/2022 AUSTRALIA - QUEENSLAND - Satellite Reef - Wreck**  
Maritime Safety Queensland

A semi submerged wreck exists in position 16° 29'.19 S 145° 40'.93 E.

Mariners are advised to navigate with caution in the area.

**Chart temporarily affected - Aus 830**

**388(P)/2022 AUSTRALIA - QUEENSLAND - Bundaberg - Burnett River - Shoaling**  
Australian Hydrographic Office

Latest survey indicates shoaler depths than those charted may exist in the Burnett River between Long Reach and Millaquin Reach.

The most significant shoals are as follows:

<i>Position</i>	<i>Depth</i>
24° 49'.11 S 152° 22'.08 E	-0.1m

24° 49'.94 S 152° 22'.31 E 0.8m.

Mariners are advised to navigate with caution in the area.

Charts will be updated in due course.

**Chart which will be affected - Aus 242**

**389(T)/2022 AUSTRALIA - QUEENSLAND - Great Sandy Strait - Tin Can Inlet - Wreck**

Maritime Safety Queensland Notice 207(T)/2022

A stranded wreck marked by a special light buoy, *Fl. Y. 2.5s*, exists in position 25° 54'.14 S 153° 01'.40 E.

Mariners are advised to navigate with caution in the area.

**Chart temporarily affected - Aus 817**

**421(T)/2022 AUSTRALIA - QUEENSLAND - Moreton Bay - Fison Channel - Light beacon unlit**

Maritime Safety Queensland Notice 234(T)/2022

The light beacon, *Q. Bu* (27° 31'.94 S 153° 17'.20 E), is unlit.

**Chart temporarily affected - Aus 236**

**422(T)/2022 AUSTRALIA - QUEENSLAND - Palm Beach - Light buoy off station**

Maritime Safety Queensland Notice 220(T)/2022

The special light buoy, *Fl. Y. 5s* (28° 06'.34 S 153° 28'.42 E), is off station.

**Chart temporarily affected - Aus 814**

**452(T)/2022 AUSTRALIA - QUEENSLAND - North Stradbroke Island - Wreck**

Maritime Safety Queensland Notice 250/2022

A wreck exists in the vicinity of position 27° 29'.45 S 153° 46'.02 E.

Mariners are advised to navigate with caution in the area.

**Chart temporarily affected - Aus 814**

**486(T)/2022 AUSTRALIA - QUEENSLAND - Abbot Point - Scientific instrument**

Maritime Safety Queensland Notice 256(T)/2022

A special spherical light buoy, *Fl(5) Y. 20s*, exists in position 19° 51'.59 S 148° 05'.63 E.

**Chart temporarily affected - Aus 255**

**490(T)/2022 AUSTRALIA - QUEENSLAND - Gold Coast Seaway - Light buoy destroyed eastwards**

Maritime Safety Queensland Notice 266/2022

The special light buoy, *Fl. Y. 4s* (27° 54'.93 S 153° 27'.59 E), has been destroyed and has sunk in position.

Mariners are advised to navigate with caution in the area.

**Chart temporarily affected - Aus 814**

**530(T)/2022 AUSTRALIA - QUEENSLAND - Gladstone - South Passage Island - Scientific instrument**

Former Notice - 841(T)/2021 is cancelled

Vision Environment

A special light buoy, *Fl. Y. 6s*, exists in position 23° 47'.05 S 151° 11'.14 E.

**Chart temporarily affected - Aus 245**

**536(T)/2022 AUSTRALIA - QUEENSLAND - Yorkeys Knob - Lights altered**

Maritime Safety Queensland Notice 287(T)/2022

The rear leading light, *Iso.Bu.2s* (16° 48'.09 S 145° 42'.93 E) has been temporarily altered to *Iso.2s*.

The front leading light, *Q.Bu* (16° 48'.04 S 145° 42'.97 E) has been temporarily altered to *Q*.

**Chart temporarily affected - Aus 262 - Aus 830**

**566(T)/2022 AUSTRALIA - QUEENSLAND - Hay Point - Scientific instrument**

*Former Notice - 66(T)/2022 is cancelled*

Maritime Safety Queensland Notice 300(T)/2022

A special light buoy, *Fl(5)Y.20s*, exists in position 21° 13'.62 S 149° 17'.82 E.

**Chart temporarily affected - Aus 249 - Aus 250**

**574(T)/2022 AUSTRALIA - TORRES STRAIT - Horn Island - Wasaga - Wreck**

Maritime Safety Queensland Notice 311(T)/2022

A wreck marked by a special light buoy, *Fl.Y.2.5s*, exists in position 10° 35'.38 S 142° 14'.66 E.

Mariners are advised to navigate with caution in the area.

**Chart temporarily affected - Aus 299**

**668(T)/2022 AUSTRALIA - QUEENSLAND - Moreton Bay - Wellington Point - Dredging operations**

Maritime Safety Queensland Notice 347(T)/2022

The dredge *Faucon* and the barge *GHT1* are conducting dredging operations in the vicinity of positions 27° 27'.79 S 153° 14'.99 E and 27° 27'.99 S 153° 14'.49 E.

The vessels will display appropriate lights and shapes and will monitor VHF Ch 13 and Ch 16.

Mariners are advised to navigate with caution in the area.

**Chart temporarily affected - Aus 236**

**669(T)/2022 AUSTRALIA - QUEENSLAND - Moreton Bay - Macleay Island - Karragarra Island - Lamb Island - Harbour works**

*Former Notice - 357(T)/2022 is cancelled*

Maritime Safety Queensland Notice 180(T)/2022, 354(T)/2022, 355(T)/2022

Harbour works associated with the upgrade of the ferry terminals are in progress at Macleay Island (27° 37'.90 S 153° 21'.92 E), Karragarra Island (27° 38'.10 S 153° 21'.82 E) and Lamb Island (27° 37'.87 S 153° 22'.35 E).

Barges and support vessels are on site.

Anchors and mooring buoys exist in the area and will be marked by lights, *Fl.Y.4s*.

Mariners are advised to navigate with caution in the area with minimal wash.

**Chart temporarily affected - Aus 236**

**694(T)/2022 AUSTRALIA - QUEENSLAND - Cumberland Islands to Hydrographers Passage - Survey operations**

*Former Notice - 613(T)/2022 is cancelled*

EGS Survey Pty Ltd

Vessel *Sea Ranger* is conducting survey operations between positions 21° 15'.80 S 149° 30'.90 E and 19° 44'.70 S 150° 22'.40 E.

Special light buoys, *Fl.Y.2s*, exist in the following positions:

21° 08'.84 S 149° 29'.31 E

20° 51'.37 S 149° 44'.15 E

20° 43'.41 S 150° 05'.60 E

20° 31'.37 S 150° 22'.72 E  
20° 10'.54 S 150° 21'.08 E  
19° 52'.27 S 150° 20'.65 E.

Tide gauges exist on the seabed in the following positions:

21° 15'.8 S 149° 30'.9 E  
21° 02'.8 S 149° 33'.3 E  
20° 57'.1 S 149° 43'.3 E  
20° 48'.1 S 149° 49'.3 E  
20° 46'.8 S 150° 01'.1 E  
20° 38'.0 S 150° 05'.2 E  
20° 37'.3 S 150° 17'.0 E  
20° 32'.2 S 150° 26'.2 E  
20° 24'.4 S 150° 18'.5 E  
20° 17'.2 S 150° 27'.1 E  
20° 13'.5 S 150° 13'.5 E  
20° 03'.8 S 150° 16'.5 E  
19° 56'.3 S 150° 16'.1 E  
19° 44'.7 S 150° 22'.4 E  
19° 55'.9 S 150° 25'.9 E.

Current meters exist on the seabed in the following positions:

20° 37'.6 S 150° 11'.7 E  
20° 30'.0 S 150° 20'.0 E  
20° 17'.4 S 150° 19'.0 E  
20° 03'.8 S 150° 16'.5 E  
19° 48'.1 S 150° 22'.2 E.

Mariners are advised to navigate with caution in the area. A 100m clearance of the light buoys is requested.

**Chart temporarily affected - Aus 249 - Aus 251 - Aus 367 - Aus 821 - Aus 823 - Aus 824**

**695(T)/2022 AUSTRALIA - QUEENSLAND - Fitzalan Passage - Light buoy unlit**

Maritime Safety Queensland Notice 388(T)/2022

The special light buoy, *Fl.Y.2-5s* (20° 18'.80 S 148° 56'.07 E), is unlit.

**Chart temporarily affected - Aus 252 - Aus 253 - Aus 254**

**696(T)/2022 AUSTRALIA - QUEENSLAND - Halifax Bay - Light beacon unlit**

Maritime Safety Queensland Notice 377(T)/2022

The light beacon, *Q(2)4s 5m* (19° 09'.23 S 146° 38'.20 E), is unlit; a special light buoy, *Fl.Y.2-5s*, exists in situ.

**Chart temporarily affected - Aus 256 - Aus 827**

**700(T)/2022 AUSTRALIA - QUEENSLAND - Townsville - Shoaling; light buoys**

*Former Notice - 535(T)/2022 is cancelled*

Maritime Safety Queensland Notice 376(T)/2022

Mariners are advised to pass north east of the following:

<i>Position</i>	<i>Remarks</i>
19° 14'.66 S 146° 49'.97 E	
19° 14'.61 S 146° 50'.01 E	special light buoy, <i>Fl.Y.2-5s WSM2</i>
19° 14'.55 S 146° 50'.02 E	special light buoy, <i>Fl.Y.2-5s WSM1</i>
19° 14'.49 S 146° 50'.00 E	light beacon, <i>Q.G P15</i> .

Mariners should navigate with caution in the area.

**Chart temporarily affected - Aus 256**

**701(T)/2022 AUSTRALIA - QUEENSLAND - Townsville - Channel widening works; nav aids**

*Former Notice - 359(T)/2022 is cancelled*

Maritime Safety Queensland Notice 122(T)/2021, 125(T)/2021, 368(T)/2022, 379/2022, 380/2022

Barge *PMG181* and support vessels are conducting works to widen the channel as part of the Townsville Port Expansion

Project.

During the works, beacons may be removed and replaced by virtual AIS while new beacons are installed.

Mariners are advised to navigate with caution in the area.

**Chart temporarily affected - Aus 256**

**733(T)/2022 AUSTRALIA - QUEENSLAND - Cairns - Trinity Inlet - Light buoys**

Maritime Safety Queensland Notice 403(T)/2022

Special light buoys, *Fl.Y.4s*, exist in the following positions:

16° 54'.81 S 145° 47'.20 E

16° 54'.89 S 145° 47'.18 E

16° 55'.17 S 145° 47'.13 E.

**Chart temporarily affected - Aus 262**

**736(T)/2022 AUSTRALIA - QUEENSLAND - Moreton Bay - Scarborough - Mooring buoy**

Maritime Safety Queensland Notice 419(T)/2022

An unlit blue mooring buoy exists in position 27° 11'.00 S 153° 05'.90 E.

**Chart temporarily affected - Aus 236**

**788(P)/2022 AUSTRALIA - CORAL SEA - Diamond Islets - Shoaling**

LADS Flight

Shoaler depths than those charted exist in the vicinity of the Diamond Islets.

Charts will be updated in due course.

**Chart which will be affected - Aus 614**

**790(T)/2022 AUSTRALIA - CORAL SEA - Mellish Reef - Light buoy off station northeastwards**

Australian Bureau of Meteorology

The light buoy, *Fl.Y.2s* (15° 51'.0 S 158° 27'.6 E), is off station.

**Chart temporarily affected - Aus 4604 (INT 604)**

**823(T)/2022 AUSTRALIA - QUEENSLAND - Fraser Island - Waddy Point - Light buoy off station eastwards**

Department of Agriculture and Fisheries

The special light buoy, *Fl.Y.3s FAD* (24° 58'.06 S 153° 32'.67 E), is off station and in position 24° 59'.50 S 153° 33'.63 E.

**Chart temporarily affected - Aus 816**

**824(T)/2022 AUSTRALIA - QUEENSLAND - Gladstone - Dredging operations; survey operations**

Maritime Safety Queensland Notice 451(T)/2022

The dredge *Brisbane* and support vessels *Pacific Titan* and *QG Norfolk* are conducting dredging and survey operations in all channels, berths and approaches.

Vessels will display appropriate lights and shapes and monitor VHF Ch 13 and Ch 16.

Mariners are advised to navigate with caution in the area.

**Chart temporarily affected - Aus 245 - Aus 246**

**825(T)/2022 AUSTRALIA - QUEENSLAND - Hay Point - Mooring buoys**

Former Notice - 65(T)/2022 is cancelled

Maritime Safety Queensland Notice 436(T)/2022

Daytime mooring buoys exist in the following positions:

21° 17'.51 S 149° 18'.43 E  
21° 17'.51 S 149° 18'.55 E  
21° 17'.51 S 149° 18'.69 E  
21° 17'.51 S 149° 18'.83 E  
21° 17'.76 S 149° 18'.29 E  
21° 17'.75 S 149° 18'.48 E  
21° 17'.74 S 149° 18'.71 E  
21° 17'.73 S 149° 18'.92 E.

Cyclone mooring buoys exist in the following positions:

21° 20'.01 S 149° 23'.06 E  
21° 20'.02 S 149° 23'.27 E  
21° 20'.20 S 149° 23'.27 E  
21° 20'.37 S 149° 22'.67 E  
21° 20'.54 S 149° 22'.67 E  
21° 20'.80 S 149° 22'.62 E  
21° 21'.13 S 149° 23'.13 E.

**Chart temporarily affected - Aus 249 - Aus 250**

**826(T)/2022 AUSTRALIA - QUEENSLAND - Karumba Channel - Light buoy off station**

Maritime Safety Queensland Notice 443(T)/2022

The port lateral light buoy, *Fl.R.2s* (17° 26'.66 S 140° 46'.95 E), is off station.

**Chart temporarily affected - Aus 6**

**875(T)/2022 AUSTRALIA - QUEENSLAND - Brisbane River - Entrance Channel to Hamilton Reach - Obstructions**

Maritime Safety Queensland

Due to a severe weather event, submerged obstructions and unusual currents may exist in the Brisbane River from the Entrance Channel (27° 18'.62 S 153° 12'.55 E) to South Brisbane Reach (27° 28'.29 S 153° 01'.22 E).

Mariners are advised to navigate with caution in the area.

**Chart temporarily affected - Aus 237**

**877(T)/2022 AUSTRALIA - QUEENSLAND - Brisbane River - Hamilton Reach - Wreck**

Maritime Safety Queensland Notice 172(T)/2022

A wreck marked by a special light buoy, *Fl.Y.2-5s*, exists in position 27° 26'.43 S 153° 03'.28 E.

Mariners are advised to navigate with caution in the area.

**Chart temporarily affected - Aus 237**

**883(T)/2022 AUSTRALIA - QUEENSLAND - Brisbane River - Nav aids damaged; nav aids off station; nav aids destroyed**

Maritime Safety Queensland Notice 112(T)/2022, 113(T)/2022, 111(T)/2022

Nav aids in the Brisbane River may be damaged, off station or destroyed due to a severe weather event.

Mariners are advised to navigate with caution in the area.

**Chart temporarily affected - Aus 237**

**886(T)/2022 AUSTRALIA - QUEENSLAND - Moreton Bay - Drilling operations**

Maritime Safety Queensland Notice 464(T)/2022

The barge *Sealift 1* and support vessels are conducting drilling operations 50m from shipping channel boundaries, but not within the channel itself. Specific channels include the Entrance, East, Main, East Knoll Bypass, Spitfire and Northwest as well as the inner anchorage at Brisbane Road.

Vessels will monitor VHF Ch 12.

Mariners are advised to navigate with caution in the area.

**Chart temporarily affected - Aus 236**

**887(T)/2022 AUSTRALIA - QUEENSLAND - Moreton Bay - Spitfire Channel - Buoy**

Maritime Safety Queensland Notice 365(T)/2019, 116(T)/2022

A starboard lateral buoy exists in position 27° 02'.90 S 153° 16'.30 E.

**Chart temporarily affected - Aus 236**

**889(T)/2022 AUSTRALIA - QUEENSLAND - Moreton Bay - North West Channel - Light beacon unlit**

Maritime Safety Queensland Notice 61(T)/2022

The light beacon, *Fl. Y. 2.5s NW2* (26° 49'.84 S 153° 08'.96 E), is unlit.

**Chart temporarily affected - Aus 236**

**891(T)/2022 AUSTRALIA - QUEENSLAND - Moreton Bay - Spitfire Channel - Obstruction**

Maritime Safety Queensland Notice 257(T)/2021

An obstruction exists on the seabed in position 27° 03'.63 S 153° 17'.32 E.

Mariners are advised to navigate with caution in the area.

**Chart temporarily affected - Aus 236 - Aus 814 - Aus 815**

**893(T)/2022 AUSTRALIA - QUEENSLAND - Moreton Bay - Spitfire Channel - Light beacon unreliable**

Maritime Safety Queensland Notice 103(T)/2021

The light beacon, *Fl. Y. 1.5s S1* (27° 02'.88 S 153° 15'.99 E), is unreliable.

**Chart temporarily affected - Aus 236**

**895(T)/2022 AUSTRALIA - QUEENSLAND - Pumicestone Channel - Wreck, light buoy**

Maritime Safety Queensland Notice 466(T)/2020

A wreck marked by a special conical light buoy, *Fl. Y. 2.5s*, exists in position 26° 48'.39 S 153° 07'.51 E.

**Chart temporarily affected - Aus 236**

**897(T)/2022 AUSTRALIA - QUEENSLAND - Pumicestone Channel - Coastline inaccuracies; shoaling**

Navionics

A major change to the coastline and depths has occurred in an area bounded by the following positions:

26° 49'.12 S 153° 07'.72 E

26° 49'.11 S 153° 08'.14 E

26° 49'.68 S 153° 08'.12 E

26° 49'.68 S 153° 07'.63 E.

Mariners are advised to navigate with caution in the area.

**Chart temporarily affected - Aus 236 - Aus 815**

## NORTHERN TERRITORY

### 211(T)/2021 AUSTRALIA - NORTHERN TERRITORY - Darwin - East Arm - Scientific instruments

Department of Infrastructure, Planning and Logistics NT Notice 21(T)/2019

Special light buoys, *Fl(5)20s*, exist in positions 12° 30'.22 S 130° 54'.24 E and 12° 30'.20 S 130° 54'.20 E.

**Chart temporarily affected - Aus 26**

### 215(T)/2021 AUSTRALIA - NORTHERN TERRITORY - Darwin Naval Base - Harbour works; exclusion zone

Department of Infrastructure, Planning and Logistics NT Notice 63/2020

Harbour works associated with wharf redevelopment are in progress in an area bounded by the coast and the following:

<i>Position</i>	<i>Remarks</i>
12° 27'.49 S 130° 49'.05 E	
12° 27'.52 S 130° 48'.98 E	special light buoy, <i>Fl.Y</i>
12° 27'.56 S 130° 48'.95 E	special light buoy, <i>Fl.Y</i>
12° 27'.61 S 130° 48'.92 E	special light buoy, <i>Fl.Y</i>
12° 27'.68 S 130° 48'.96 E	special light buoy, <i>Fl.Y</i>
12° 27'.85 S 130° 49'.25 E	special light buoy, <i>Fl.Y</i>
12° 27'.80 S 130° 49'.27 E	special light buoy, <i>Fl.Y</i>
12° 27'.76 S 130° 49'.30 E	special light buoy, <i>Fl.Y</i>
12° 27'.73 S 130° 49'.32 E.	

An exclusion zone exists in the area and only authorised vessels are permitted to enter.

Mariners are advised to keep well clear and to navigate with caution in the area.

**Chart temporarily affected - Aus 25 - Aus 26**

### 183(T)/2022 INDIAN OCEAN - Christmas Island - Mooring buoy off station

L Mioceovich

The mooring buoy (10° 25'.92 S 105° 39'.5 E) is off station and is currently in position 10° 26'.48 S 105° 39'.45 E.

**Chart temporarily affected - Aus 920**

### 832(T)/2022 AUSTRALIA - NORTHERN TERRITORY - Apsley Strait - Light buoy off station

Northern Territory Government Notice 33(T)/2022

The starboard lateral light buoy, *Fl.G.4s* (11° 43'.81 S 130° 36'.07 E), is off station.

**Chart temporarily affected - Aus 23**

### 834(T)/2022 AUSTRALIA - NORTHERN TERRITORY - Beagle Gulf - Drill rig

MODU *Valaris MS-1*

Drill rig *Valaris MS-1* is moored in position 12° 02'.15 S 130° 13'.62 E.

**Chart temporarily affected - Aus 309**



## WESTERN AUSTRALIA

### **1078(P)/2015 AUSTRALIA - WESTERN AUSTRALIA - East Holothuria Reef - Shoaling** HMAS Mermaid

Depths less than 6m have been reported in the vicinity of position 13° 33'.6 S 126° 10'.8 E.

Mariners are advised to navigate with caution in the area.

**Chart which will be affected - Aus 318 - Aus 319 - Aus 727 - Aus 728**

### **480(T)/2016 AUSTRALIA - WESTERN AUSTRALIA - Rankin Bank - Scientific instrument** MetOcean Engineers

A subsurface scientific instrument exists 200m below the surface in position 19° 32'.00 S 115° 48'.01 E.

**Chart temporarily affected - Aus 327**

### **731(T)/2016 AUSTRALIA - WESTERN AUSTRALIA - Rankin Bank - Scientific instruments southwestwards** *Former Notice - 701(T)/2015 is cancelled* A McCarthy , MetOcean Engineers

Subsurface scientific instruments exist 80m below the surface in the following positions:

19° 56'.34 S 115° 23'.38 E

19° 56'.46 S 115° 23'.29 E.

**Chart temporarily affected - Aus 327 - Aus 328**

### **991(T)/2018 AUSTRALIA - WESTERN AUSTRALIA - Montebello Islands - Ah Chong Island - Light unreliable** Quadrant Energy

The light, *Mo(U)Y.15s* (20° 32'.86 S 115° 36'.27 E), is unreliable.

**Chart temporarily affected - Aus 327 - Aus 742**

### **291(T)/2019 AUSTRALIA - WESTERN AUSTRALIA - Barrow Island - Well abandonment works northwestwards** Chevron Australia

Sixteen anchors and mooring lines have been installed around the well in position 20° 24'.49 S 114° 50'.95 E.

Mariners are advised to navigate with caution in the area.

**Chart temporarily affected - Aus 328**

### **1113(T)/2019 AUSTRALIA - WESTERN AUSTRALIA - Dampier - Pluto Channel - Light buoy established** Pilbara Ports Authority Notice D15(T)/2019

A special pillar light buoy, *Fl.Y.3s P18*, with topmark exists in position 20° 35'.90 S 116° 45'.00 E.

**Chart temporarily affected - Aus 59**

### **1118(P)/2019 AUSTRALIA - WESTERN AUSTRALIA - Point D'Entrecasteaux to Point Nuyts - Shoaling** LADS Flight

Latest survey shows shoaler depths than those charted may exist in an area bounded by the coast and the following positions:

34° 50'.71 S 116° 08'.52 E

35° 01'.54 S 116° 10'.54 E

35° 03'.52 S 116° 37'.62 E.

Mariners are advised to navigate with caution in the area.

Charts will be updated in due course.

**Chart which will be affected - Aus 336**

**1165(T)/2019 AUSTRALIA - WESTERN AUSTRALIA - Garden Island - Beacon Head - Obstruction; light buoy**  
Fremantle Ports Notice 6(T)/2019, Department of Transport WA

An obstruction marked by a spherical isolated danger light buoy, *Fl(2)10s*, exists in position 32° 09'.16 S 115° 40'.65 E.

**Chart temporarily affected - Aus 117**

**1280(P)/2019 AUSTRALIA - WESTERN AUSTRALIA - Houtman Abrolhos - North Island to Pelsaert Island - Shoaling**  
Fugro LADS

In and around the islands and reefs of Houtman Abrolhos, between North Island (28° 17'.90 S 113° 35'.80 E) and Pelsaert Island (28° 56'.11 S 113° 58'.09 E), latest survey shows the existence of numerous shoaler depths than those charted.

The most significant shoals are as follows:

<i>Position</i>	<i>Depth</i>
28° 31'.19 S 113° 42'.04 E	8.5m
28° 41'.12 S 113° 46'.57 E	9.6m
28° 41'.51 S 113° 50'.93 E	10.9m
28° 41'.90 S 113° 47'.09 E	5.0m
28° 42'.34 S 113° 51'.41 E	12.6m
28° 44'.33 S 113° 47'.60 E	7.6m
28° 44'.66 S 113° 47'.86 E	5.9m
28° 45'.22 S 113° 49'.21 E	18.4m
28° 45'.61 S 113° 48'.94 E	10.1m

Mariners are advised to navigate with caution in the area.

Charts will be updated in due course.

**Chart which will be affected - Aus 332**

**1285(T)/2019 AUSTRALIA - WESTERN AUSTRALIA - Port Walcott - Outer North Channel - Tide gauge**  
Australian Maritime Safety Authority Auscoast Warning 288/2016

A tide gauge marked by a special light buoy, *Q*, exists in position 20° 24'.95 S 117° 23'.35 E.

**Chart temporarily affected - Aus 55 - Aus 326**

**212(T)/2020 AUSTRALIA - WESTERN AUSTRALIA - Rottnest Island - Scientific instruments northwestwards**  
CSIRO

Subsurface scientific instruments exist as follows:

<i>Position</i>	<i>Depth below surface</i>
31° 38'.8 S 115° 11'.8 E	24m
31° 43'.7 S 115° 02'.5 E	23m
31° 45'.9 S 114° 57'.9 E	496m
31° 59'.0 S 115° 13'.7 E	180m
31° 59'.4 S 115° 23'.1 E	22m
32° 00'.0 S 115° 25'.0 E	46m

**Chart temporarily affected - Aus 754**

**781(T)/2020 AUSTRALIA - WESTERN AUSTRALIA - Carnarvon - Scientific instrument**  
Department of Transport WA

A scientific instrument marked by a special light buoy, *Fl.Y.3s*, exists on the seabed in position 24° 54'.55 S 113° 37'.50 E.

**Chart temporarily affected - Aus 73**

**933(T)/2020 AUSTRALIA - WESTERN AUSTRALIA - Rottnest Island - Scientific instrument**  
Curtin University

A lit scientific instrument, marked by a buoy, surfaces three times daily to transmit data in the vicinity of position 31° 58'.54 S 115° 23'.27 E.

**Chart temporarily affected - Aus 754**

**1010(T)/2020 AUSTRALIA - WESTERN AUSTRALIA - Jurien Bay - Scientific instruments**

Department of Transport WA Notice 81/2020

Scientific instruments, marked by special light buoys, *Fl. Y.3s*, exist in the following positions:

30° 16'.57 S 115° 02'.08 E

30° 16'.66 S 115° 02'.10 E

30° 18'.09 S 115° 01'.19 E

30° 18'.15 S 115° 00'.65 E

30° 17'.05 S 115° 02'.24 E.

Mariners are advised to navigate with caution in the area.

**Chart temporarily affected - Aus 84 - Aus 753**

**399(T)/2021 AUSTRALIA - WESTERN AUSTRALIA - Fremantle - Hall Bank - Light beacon damaged**

Fremantle Ports Notice 2(T)/2020

The port light beacon, *Fl.R.4s 7m 4M* (32° 01'.89 S 115° 42'.73 E), is damaged; a temporary light, *Oc.Y 3s 7m*, exists on the beacon.

**Chart temporarily affected - Aus 112 - Aus 754**

**401(T)/2021 AUSTRALIA - WESTERN AUSTRALIA - Fremantle - Dredging operations**

Fremantle Ports Notice 2/2018

The dredge *Modi-R* is conducting dredging operations in an area bounded by the following positions:

32° 08'.33 S 115° 42'.20 E

32° 08'.27 S 115° 42'.40 E

32° 03'.60 S 115° 41'.34 E

32° 03'.63 S 115° 41'.13 E.

Mariners are advised to navigate with caution in the area.

**Chart temporarily affected - Aus 112 - Aus 117 - Aus 754**

**404(T)/2021 AUSTRALIA - WESTERN AUSTRALIA - Koolan Island - Mooring buoy**

Trinacria Consulting

The mooring buoy (16° 09'.15 S 123° 45'.05 E) has sunk in position.

**Chart temporarily affected - Aus 40 - Aus 41**

**540(T)/2021 AUSTRALIA - WESTERN AUSTRALIA - Port of Ashburton - Light buoy off station**

Pilbara Ports Authority

The special light buoy, *Fl(5)Y.20s* (21° 32'.46 S 115° 01'.98 E), is off station and currently in position 21° 32'.23 S 115° 01'.58 E.

**Chart temporarily affected - Aus 64 - Aus 743**

**647(T)/2021 AUSTRALIA - WESTERN AUSTRALIA - Ashburton Island - Scientific instrument northwards**

Pilbara Ports Authority Notice A9(T)/2021

A subsurface scientific instrument, with a least depth of 11m, exists in position 21° 32'.43 S 114° 56'.01 E.

**Chart temporarily affected - Aus 64 - Aus 328 - Aus 743 - Aus 744**

**653(T)/2021 AUSTRALIA - WESTERN AUSTRALIA - Onslow - Beadon Creek - Harbour works**

Department of Transport WA Notice 90(T)/2021

Vessels *Margaret* and *Beadon Creek* are conducting wharf extension operations in the vicinity of position 21° 38'.68 S 115° 07'.86 E. Special light buoys, *Fl. Y*, have been established around the works.

All vessels will display appropriate lights and shapes, and will monitor VHF Ch 16.

Mariners are advised to navigate with caution in the area.

**Chart temporarily affected - Aus 64**

**797(T)/2021 AUSTRALIA - WESTERN AUSTRALIA - Bedout Islet to Montebello Islands - Survey operations**  
Santos

On or about 15 September 2021, survey operations will be conducted in areas bounded by the following positions:

19° 54'.92 S 116° 20'.08 E  
19° 59'.92 S 116° 20'.08 E  
19° 59'.92 S 116° 15'.08 E  
20° 04'.92 S 116° 15'.08 E  
20° 04'.92 S 116° 25'.08 E  
19° 54'.92 S 116° 25'.08 E;  
and  
19° 00'.46 S 118° 42'.42 E  
19° 02'.35 S 118° 42'.43 E  
19° 15'.00 S 118° 59'.36 E  
19° 01'.93 S 119° 13'.62 E  
18° 57'.84 S 119° 13'.56 E;  
and  
20° 18'.24 S 115° 49'.45 E  
20° 23'.93 S 115° 40'.08 E  
20° 24'.37 S 115° 40'.08 E  
20° 28'.34 S 115° 42'.79 E  
20° 22'.52 S 115° 52'.38 E.

Mariners are advised to navigate with caution in the area.

**Chart temporarily affected - Aus 325 - Aus 326 - Aus 327 - Aus 742**

**800(T)/2021 AUSTRALIA - WESTERN AUSTRALIA - Geraldton - Dredging operations**  
Mid West Ports Notice 17/2021

The dredge *Modi R*, support vessel *Bhagwan Abrolhos* and survey vessel *Black Jack* are conducting dredging and survey operations in the entrance channel (28° 45'.46 S 114° 34'.16 E), harbour and berth pockets .

A 150m exclusion zone exists around the dredge vessels. The vessels will monitor VHF Ch 11 and Ch 16.

Mariners are advised to navigate with caution in the area.

**Chart temporarily affected - Aus 81**

**987(P)/2021 AUSTRALIA - WESTERN AUSTRALIA - Bonaparte Archipelago - D'Arcole Islands to Augereau Island - Shoaling**  
European Space Agency

In and around the D'Arcole Islands (14° 54'.97 S 124° 44'.43 E) and Augereau Island (14° 45'.33 S 125° 07'.78 E) latest survey shows the existence of numerous shoaler depths than those charted.

The most significant shoals are as follows:

<i>Position</i>	<i>Depth</i>
14° 43'.71 S 125° 04'.91 E	6.7m
14° 44'.82 S 125° 05'.02 E	9.7m
14° 45'.05 S 125° 05'.55 E	8.9m
14° 49'.37 S 125° 07'.51 E	7.4m
14° 52'.96 S 124° 43'.51 E	1.0m
14° 54'.01 S 124° 44'.13 E	3.3m
14° 55'.03 S 124° 39'.57 E	1.8m
14° 56'.09 S 124° 43'.45 E	3.6m
14° 57'.10 S 124° 39'.44 E	1.2m
14° 57'.22 S 124° 46'.19 E	1.8m

14° 57'.83 S 124° 39'.85 E 0.9m  
15° 00'.80 S 124° 37'.79 E 3.7m.

Mariners are advised to navigate with caution in the area.

Charts will be updated in due course.

**Chart which will be affected - Aus 37 - Aus 320 - Aus 729 - Aus 730**

**991(T)/2021 AUSTRALIA - WESTERN AUSTRALIA - Port Hedland - Obstruction**  
Pilbara Ports Authority

An obstruction, with least depth 6.5m, exists in position 20° 14'.72 S 118° 37'.41 E.

Mariners are advised to navigate with caution in the area.

**Chart temporarily affected - Aus 53 - Aus 326**

**1028(T)/2021 AUSTRALIA - WESTERN AUSTRALIA - Carnarvon - Harbour works**

*Former Notice - 650(T)/2021 is cancelled*

Department of Transport WA Notice 12/2021, 152/2021

The dredge *FT3* and support vessels *Seahorse Quenda* and *Y2K* are conducting works associated with the removal of the jetty (24° 52'.74 S 113° 37'.28 E).

A 50m exclusion zone exists around the jetty.

Lit mooring buoys exist in positions 24° 52'.71 S 113° 36'.86 E and 24° 52'.78 S 113° 36'.80 E.

All vessels will display appropriate lights and shapes and will monitor VHF Ch 16 and 73.

Mariners are advised to navigate with caution in the area and keep well clear of the works.

**Chart temporarily affected - Aus 73**

**1075(T)/2021 AUSTRALIA - WESTERN AUSTRALIA - Port of Ashburton - Scientific instrument**

Pilbara Ports Authority Notice A14(T)/2021

A scientific instrument exists on the seabed in position 21° 40'.45 S 115° 01'.35 E.

**Chart temporarily affected - Aus 64 - Aus 743**

**34(T)/2022 AUSTRALIA - WESTERN AUSTRALIA - Osborn Reefs - Wreck**

MMA Offshore

A wreck, least depth 31m, exists in position 15° 09'.82 S 124° 13'.46 E.

**Chart temporarily affected - Aus 320 - Aus 730**

**130(T)/2022 AUSTRALIA - WESTERN AUSTRALIA - Carnarvon - Fascine Waterway - Shoaling**

Department of Transport WA

Significant shoaling exists in an area bounded by the following positions:

24° 54'.44 S 113° 38'.46 E

24° 54'.51 S 113° 38'.84 E

24° 53'.95 S 113° 38'.52 E

24° 53'.96 S 113° 38'.31 E.

Mariners are advised to navigate with caution in the area.

**Chart temporarily affected - Aus 73**

**212(T)/2022 AUSTRALIA - WESTERN AUSTRALIA - King George Sound - Scientific instruments**

Department of Transport WA Notice 255/2022

Special light buoys, *Fl. Y. 4-5s*, exist in positions 35° 03'.20 S 118° 00'.91 E and 35° 05'.00 S 118° 00'.36 E.

**Chart temporarily affected - Aus 118**

**287(T)/2022 AUSTRALIA - WESTERN AUSTRALIA - Bundegi Reef - Scientific instrument**

Department of Transport WA Notice 792/2022

A special light buoy, *Fl. Y. 2-5s*, exists in position 21° 52'.15 S 114° 12'.23 E.

**Chart temporarily affected - Aus 328 - Aus 329 - Aus 744 - Aus 745**

**334(T)/2022 AUSTRALIA - WESTERN AUSTRALIA - Muiron Islands - Well plug and abandonment works northwestwards**

Woodside Energy Ltd

Drill rig *Valaris DPS-1* and support vessels *Normand Swan*, *Normand Tortuga* and *Siem Pilot* are conducting well plug and abandonment works in the following positions:

21° 28'.90 S 113° 59'.32 E

21° 27'.93 S 113° 59'.58 E

21° 29'.26 S 113° 58'.51 E

21° 30'.06 S 113° 57'.85 E.

Mariners are advised to navigate with caution in the area.

**Chart temporarily affected - Aus 328 - Aus 329**

**364(T)/2022 AUSTRALIA - WESTERN AUSTRALIA - Dampier - Scientific instruments**

Pilbara Ports Authority D03/2022(T)

Special light buoys, *Fl. Y. 1-5s*, exist in the following positions:

20° 40'.26 S 116° 39'.30 E

20° 38'.40 S 116° 44'.16 E

20° 37'.32 S 116° 44'.76 E

20° 32'.16 S 116° 46'.68 E

20° 28'.26 S 116° 47'.82 E

20° 31'.02 S 116° 38'.76 E

20° 28'.14 S 116° 42'.30 E

20° 30'.72 S 116° 47'.10 E

20° 22'.74 S 116° 47'.52 E.

**Chart temporarily affected - Aus 57 - Aus 59 - Aus 327**

**366(T)/2022 AUSTRALIA - WESTERN AUSTRALIA - Dampier Archipelago - Scientific instruments northeastwards**

O2 Marine

Scientific instruments exist on the seabed in positions 20° 17'.97 S 116° 53'.84 E and 20° 17'.89 S 116° 51'.58 E.

Mariners are advised to navigate with caution in the area

**Chart temporarily affected - Aus 327**

**461(T)/2022 AUSTRALIA - WESTERN AUSTRALIA - Port Hedland - Scientific instruments**

Former Notice - 427(T)/2022 is cancelled

Pilbara Ports Authority Notice PH4(T)/2022

Special light buoys, *Q. Y.*, exist as follows:

<i>Positions</i>	<i>Remarks</i>
20° 16'.79 S 118° 34'.86 E	130m exclusion zone exists around the buoy
20° 17'.11 S 118° 35'.51 E	130m exclusion zone exists around the buoy
20° 17'.25 S 118° 30'.88 E	125m exclusion zone exists around the buoy.

Mariners are advised to navigate with caution in the area.

**Chart temporarily affected - Aus 53**

**509(T)/2022 AUSTRALIA - WESTERN AUSTRALIA - Trigg Island - Scientific instruments westwards**

Former Notice - 498(T)/2020 is cancelled

Department of Transport WA Notice 66/2020

Special light buoys exist as follows:

Position	Remarks
31° 52'.70 S 115° 43'.11 E	Q(5)Y.20s
31° 52'.59 S 115° 43'.12 E	Q(5)Y.20s
31° 52'.53 S 115° 43'.32 E	Fl. Y.5s.

**Chart temporarily affected - Aus 112**

**538(T)/2022 AUSTRALIA - WESTERN AUSTRALIA - Barrow Island - Subsea operations northwestwards**

Former Notice - 504(T)/2022 is cancelled

Chevron Australia

On or about 20 July 2022, MV *Pride* and two ROVs will be conducting subsea operations in the vicinity of the following positions:

19° 51'.17 S 114° 30'.91 E

20° 24'.48 S 114° 50'.96 E

20° 34'.63 S 114° 46'.62 E.

Mariners are advised to navigate with caution in the area.

**Chart temporarily affected - Aus 328**

**540(T)/2022 AUSTRALIA - WESTERN AUSTRALIA - Port Hedland - Scientific instruments**

Atlas Iron

Scientific instruments marked by special spar light buoys, Q(5)Y.20s, exist in positions 20° 04'.78 S 118° 48'.32 E and 20° 03'.03 S 118° 42'.21 E.

**Chart temporarily affected - Aus 325 - Aus 326**

**581(T)/2022 AUSTRALIA - WESTERN AUSTRALIA - Montebello Islands - Well plug and abandonment works northwestwards**

Woodside Energy Ltd

Drill rig *Ocean Apex* and support vessels *Maersk Mover* and *Maersk Master* are conducting well plug and abandonment works in the vicinity of position 20° 04'.21 S 115° 11'.01 E.

Mariners are advised to navigate with caution in the area.

**Chart temporarily affected - Aus 328 - Aus 742**

**583(T)/2022 AUSTRALIA - WESTERN AUSTRALIA - Port Hedland - Mooring buoys**

Pilbara Ports Authority Notice 7(T)/2022

A lit orange cylindrical mooring buoy, Q, exists in position 20° 16'.40 S 118° 35'.29 E.

A lit orange cylindrical mooring buoy, VQ, exists in position 20° 16'.21 S 118° 35'.28 E.

**Chart temporarily affected - Aus 53**

**585(T)/2022 AUSTRALIA - WESTERN AUSTRALIA - Warnbro Sound - Safety Bay - Shoaling**

Department of Transport WA Notice 1897(T)/2022

Shoaling exists between the boat ramp (32° 18'.42 S 115° 43'.17 E) and the starboard lateral light buoy (32° 18'.69 S 115° 43'.11 E). The channel is almost completely obstructed by the encroaching sand bar.

Mariners are advised to navigate with caution in the area and should not rely solely on the light buoys for navigation through the channel.

**Chart temporarily affected - Aus 116**

**623(T)/2022 AUSTRALIA - WESTERN AUSTRALIA - Bunbury - Koombana Bay - Harbour works**

Department of Transport WA Notice 1852/2022

On or about 17 August 2022, works associated with the demolition and construction of the boat ramp in the vicinity of position 33° 18'.71 S 115° 38'.28 E will commence.

The works area will be marked by special light buoys.

The barge *TMC1* and support vessels will be conducting piling operations and unlit piles may exist in the area.

All vessels will display appropriate lights and shapes and will monitor VHF Ch 16.

The boat ramp will be closed for the duration of the works.

Mariners are advised to navigate with caution in the area.

**Chart temporarily affected - Aus 115**

**624(T)/2022 AUSTRALIA - WESTERN AUSTRALIA - Cape Leeuwin - Light altered**

Australian Maritime Safety Authority Auscoast Warning 232/2021

The light, *Fl. 7.5s 56m 25M* (34° 22'.49 S 115° 08'.18 E), has been temporarily altered to *Fl. 7.5s 56m 20M*.

**Chart temporarily affected - Aus 116 - Aus 335 - Aus 336 - Aus 4070 (INT 70) - Aus 4708 (INT 708) - Aus 4709 (INT 709) - Aus 4710 (INT 710)**

**703(T)/2022 AUSTRALIA - WESTERN AUSTRALIA - Dampier Archipelago - Drill rig northwestwards**

Former Notice - 425(T)/2022 is cancelled

MODU *Valaris 107*

Drill rig *Valaris 107* is conducting drilling operations in position 20° 17'.40 S 116° 16'.52 E.

**Chart temporarily affected - Aus 327 - Aus 742**

**704(T)/2022 AUSTRALIA - WESTERN AUSTRALIA - Dampier Archipelago - Drill rig northwestwards**

MODU *Ocean Onyx*

Drill rig *Ocean Onyx* is moored in position 20° 24'.52 S 116° 08'.68 E.

**Chart temporarily affected - Aus 327 - Aus 742**

**742(T)/2022 AUSTRALIA - WESTERN AUSTRALIA - Bonaparte Archipelago - Survey operations**

Guardian Geomatics

On or about 19 September 2022, MV *Offshore Solution* will be conducting survey operations in an area bounded by the following positions:

15° 00'.04 S 124° 41'.50 E  
15° 07'.84 S 124° 25'.34 E  
15° 00'.63 S 124° 10'.68 E  
14° 43'.38 S 124° 37'.84 E  
14° 48'.09 S 124° 47'.48 E  
14° 54'.63 S 124° 38'.43 E.

Scientific instruments exist on the seabed in the following positions:

14° 44'.1 S 124° 39'.6 E  
14° 47'.1 S 124° 45'.6 E  
14° 48'.9 S 124° 29'.5 E  
14° 52'.0 S 124° 42'.6 E  
14° 54'.5 S 124° 20'.0 E  
14° 56'.5 S 124° 30'.3 E  
15° 00'.1 S 124° 40'.3 E  
15° 00'.6 S 124° 10'.7 E  
15° 04'.8 S 124° 20'.2 E  
15° 05'.8 S 124° 33'.6 E  
15° 09'.9 S 124° 25'.8 E.

Mariners are advised to navigate with caution in the area.



Note: For e-notice users, please see full edition for map.

NOT TO BE USED FOR NAVIGATION

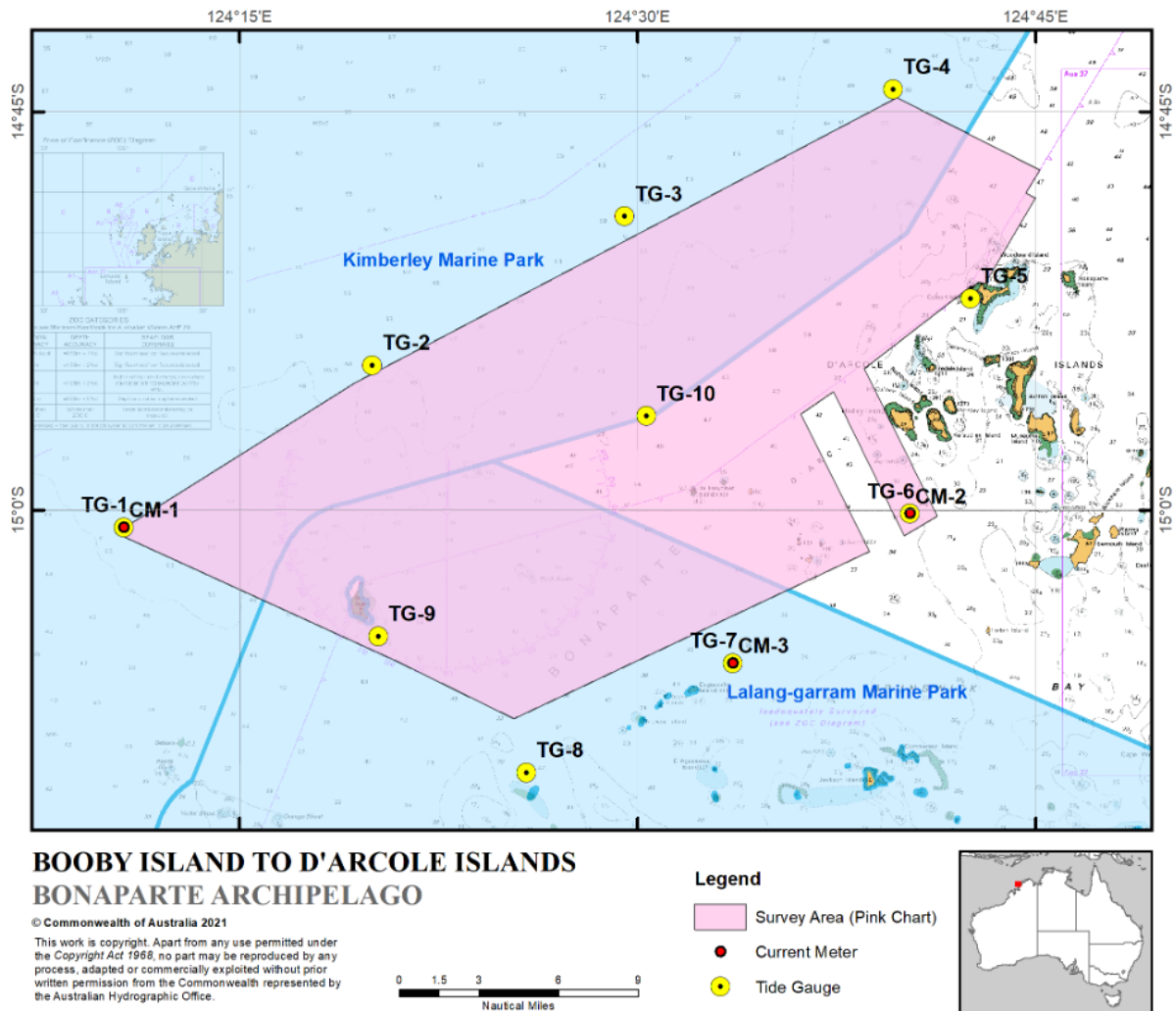


Chart temporarily affected - Aus 320 - Aus 729 - Aus 730

**744(T)/2022 AUSTRALIA - WESTERN AUSTRALIA - Fremantle - Scientific instrument**  
Department of Transport WA Notice 2612(T)/2022

A subsurface scientific instrument, 0.2m above the seabed, exists in position 32° 04.72' S 115° 44.51' E.

Chart temporarily affected - Aus 117

**745(T)/2022 AUSTRALIA - WESTERN AUSTRALIA - Ningaloo Reef - Scientific instrument**  
Department of Transport WA Notice 521/2022

A special light buoy, *Fl.Y.2.5s*, exists in position 23° 08'.58 S 113° 44'.24 E.

Chart temporarily affected - Aus 746

**800(T)/2022 AUSTRALIA - WESTERN AUSTRALIA - Geographe Bay - Scientific instruments**  
Department of Transport WA Notice 2792/2022

Special light buoys, *Fl.Y.2.5s*, exist in the following positions:

33° 37'.63 S 115° 20'.26 E  
33° 35'.86 S 115° 17'.80 E  
33° 35'.10 S 115° 08'.70 E.

Chart temporarily affected - Aus 755

**839(T)/2022 AUSTRALIA - WESTERN AUSTRALIA - Barrow Island - Subsea operations northwestwards**  
Sapura Energy Australia

On or about 23 October 2022, Vessel *Sapura Constructor* and a ROV will be conducting subsea operations between positions 20° 26'.83 S 115° 07'.22 E and 20° 32'.08 S 115° 14'.88 E.

Mariners are advised to navigate with caution in the area. 0.27M clearance requested.

**Chart temporarily affected - Aus 328 - Aus 742**

**841(T)/2022 AUSTRALIA - WESTERN AUSTRALIA - Geographe Bay - Scientific instruments**  
Department of Transport WA Notice 2997/2022

Scientific instruments marked by special spherical light buoys, *Fl.Y.1-5s*, exist in the following positions:

33° 37'.34 S 115° 23'.84 E  
33° 37'.33 S 115° 23'.75 E  
33° 37'.50 S 115° 22'.34 E  
33° 37'.50 S 115° 22'.28 E  
33° 38'.07 S 115° 22'.40 E  
33° 38'.08 S 115° 22'.27 E.

**Chart temporarily affected - Aus 116 - Aus 755**

**842(T)/2022 AUSTRALIA - WESTERN AUSTRALIA - Glomar Shoal - Subsea operations southwestwards**  
CSIRO , Santos

MV *Adrianus* and support vessel are conducting subsea operations in the vicinity of position 19° 42'.24 S 116° 42'.06 E.

The operations involve the deployment of scientific instruments on the seabed and surveys conducted by a ROV. Two white unlit buoys may exist in the area.

Mariners are advised to navigate with caution in the area.

**Chart temporarily affected - Aus 327**

**843(T)/2022 AUSTRALIA - WESTERN AUSTRALIA - Lombadina Point to Eclipse Shoals - Survey operations**  
Ocean Infinity Pty Ltd

MV *Outer Limit* is conducting survey operations between positions 16° 29'.0 S 122° 46'.0 E and 16° 51'.4 S 122° 24'.0 E.

The vessel will display appropriate lights and shapes and monitor VHF Ch 16.

Subsurface scientific instruments exist on the seabed in the following positions:

16° 29'.82 S 122° 49'.47 E  
16° 29'.98 S 122° 41'.61 E  
16° 35'.06 S 122° 34'.49 E  
16° 35'.06 S 122° 34'.52 E  
16° 38'.66 S 122° 42'.04 E  
16° 42'.34 S 122° 27'.20 E  
16° 45'.36 S 122° 34'.18 E  
16° 49'.29 S 122° 19'.80 E  
16° 51'.40 S 122° 27'.19 E.

Special light buoys, *Fl.Y.3-2s*, may exist in the vicinity of the above positions.

Mariners are advised to navigate with caution in the area.

**Chart temporarily affected - Aus 323**

**844(T)/2022 AUSTRALIA - WESTERN AUSTRALIA - Montebello Islands - Subsea operations northwestwards**  
Woodside Energy Ltd

MV *Skandi Hercules* and support vessels are conducting subsea operations in the vicinity of position 19° 57'.83 S 115° 12'.97 E.

Mariners are advised to navigate with caution in the area. 0.27M clearance requested.

**Chart temporarily affected - Aus 328**

**845(T)/2022 AUSTRALIA - WESTERN AUSTRALIA - Ningaloo Reef - Tantabiddi Passage - Light buoy off station**  
Department of Transport WA

The orange light buoy, *Fl(5)Y.20s* (21° 53'.62 S 113° 55'.71 E), is off station.

**Chart temporarily affected - Aus 745**

**904(T)/2022 AUSTRALIA - WESTERN AUSTRALIA - Browse Island - Drill rig northwestwards**  
*Former Notice - 507(T)/2022 is cancelled*  
Maersk Drilling

Drill rig *Noble Deliverer* is conducting drilling operations in position 13° 57'.98 S 123° 08'.69 E.

**Chart temporarily affected - Aus 319 - Aus 320 - Aus 322**

**905(T)/2022 AUSTRALIA - WESTERN AUSTRALIA - Geraldton - Fishing Boat Harbour - Dredging operations**  
Department of Transport WA Notice 3126(T)/2022

The dredge *Mudlark 1* and support vessels *Aquarius* and *WB08* are conducting dredging operations at the entrance to the harbour (28° 46'.26 S 114° 35'.56 E).

A floating and submerged pipeline marked by flashing yellow lights exists between the dredge and a discharge location.

Vessels will display appropriate lights and shapes and will monitor VHF Ch 11 and Ch 16.

Mariners are advised to navigate with caution in the area and to not pass to the west of an imaginary line between positions 28° 46'.20 S 114° 35'.53 E and 28° 46'.29 S 114° 35'.56 E.

**Chart temporarily affected - Aus 81**

**906(T)/2022 AUSTRALIA - WESTERN AUSTRALIA - Lesuer Island - Survey operations northeastwards**  
Santos

On or about 4 November 2022, the vessel *Bhagwan K* and a ROV will be conducting survey operations within a 1·1M radius of position 13° 10'.70 S 127° 55'.49 E.

Mariners are advised to navigate with caution in the area.

**Chart temporarily affected - Aus 315 - Aus 318**

**908(T)/2022 AUSTRALIA - WESTERN AUSTRALIA - Port Geographe Marina - Dredging operations**  
Department of Transport WA Notice 3121(T)/2022

The dredge *Cooper II* is conducting dredging operations at the entrance to the marina (33° 37'.74 S 115° 23'.38 E).

A floating and submerged pipeline exists from the dredge to the disposal area. The floating section of the pipeline is marked by special light buoys and the submerged section is marked by white buoys.

The operational area will be marked by special light buoys and mariners are advised to follow the marked route to pass the area safely. At times traffic may be stopped and or escorted through the area by a work vessel.

The dredge will display appropriate lights and shapes and will monitor VHF Ch 16 (emergency only) and Ch 81.

Mariners are advised to navigate with caution in the area.

**Chart temporarily affected - Aus 116**

## **SOUTH AUSTRALIA**

### **436(T)/2017 AUSTRALIA - SOUTH AUSTRALIA - Fleurieu Peninsula - Haycock Point - Hulk; prohibited area**

*Former Notice* - 619(T)/2016 is cancelled

Department of Planning, Transport and Infrastructure SA Notices 37/2014, 8/2017

A lit hulk, *Fl. Y. 4s*, exists in position 35° 25'.23 S 138° 18'.33 E.

A prohibited area, marked by special buoys, exists in an area bounded by the following positions:

35° 25'.15 S 138° 18'.28 E

35° 25'.17 S 138° 18'.42 E

35° 25'.32 S 138° 18'.39 E

35° 25'.29 S 138° 18'.26 E.

**Chart temporarily affected - Aus 485 - Aus 780**

### **794(T)/2018 AUSTRALIA - SOUTH AUSTRALIA - Flinders Island - Point Malcolm - Light unlit**

Department of Planning, Transport and Infrastructure SA Notice 28/2018

The light, *Fl(2) 10s 67m 11M* (33° 40'.90 S 134° 31'.59 E) is unlit.

**Chart temporarily affected - Aus 342**

### **506(T)/2019 AUSTRALIA - SOUTH AUSTRALIA - Lucky Bay - Harbour works**

*Former Notice* - 1101(T)/2017 is cancelled

Department of Planning, Transport and Infrastructure SA

Works are in progress at Lucky Bay (33° 42'.45 S 137° 02'.18 E), and the area is closed with a temporary seawall.

**Chart temporarily affected - Aus 777**

### **733(T)/2019 AUSTRALIA - SOUTH AUSTRALIA - Lacepede Bay - Wreck**

Australian Maritime Safety Authority Auscoast 180/2019

A wreck exists in position 36° 26'.93 S 139° 40'.20 E.

**Chart temporarily affected - Aus 347**

### **723(T)/2020 AUSTRALIA - SOUTH AUSTRALIA - Investigator Strait to Gulf St Vincent - Tide gauges**

Department for Infrastructure and Transport SA Notice 24(T)/2020

Tide gauges, 3m above the seabed, exist in the following positions:

34° 42'.09 S 138° 07'.34 E

34° 57'.48 S 138° 05'.75 E

35° 15'.30 S 138° 13'.00 E

35° 16'.79 S 137° 23'.74 E

35° 20'.50 S 137° 46'.80 E.

Mariners are advised to navigate with caution in the area and avoid anchoring or trawling.

**Chart temporarily affected - Aus 485 - Aus 780 - Aus 781**

### **884(T)/2020 AUSTRALIA - SOUTH AUSTRALIA - Glenelg - Shoaling; dredging operations**

Department of Planning, Transport and Infrastructure SA Notice 26/2018

Shoaling exists in the entrance channel to Holdfast Shores (34° 58'.42 S 138° 30'.51 E).

Dredging operations are in progress in the area.

Mariners are advised to navigate with caution in the area.

**Chart temporarily affected - Aus 781**

**886(T)/2020 AUSTRALIA - SOUTH AUSTRALIA - Wirrina Cove - Light beacon altered**

Department of Planning, Transport and Infrastructure SA Notice 7/2019

The light beacon, *F.Bu* (35° 30'.07 S 138° 14'.35 E), has been temporarily altered to *F.Y.*

**Chart temporarily affected - Aus 347 - Aus 780**

**934(T)/2020 AUSTRALIA - SOUTH AUSTRALIA - Lucky Bay - Dredging operations**

Department for Infrastructure and Transport SA Notice 28/2020

Dredging operations are in progress in an area bounded by the following positions:

33° 42'.55 S 137° 02'.26 E  
33° 42'.82 S 137° 02'.70 E  
33° 42'.58 S 137° 02'.91 E  
33° 42'.40 S 137° 02'.60 E.

A floating pipeline exists in the area.

The dredge will display appropriate lights and shapes.

Mariners are advised to navigate with caution in the area.

**Chart temporarily affected - Aus 777**

**81(T)/2021 AUSTRALIA - SOUTH AUSTRALIA - Gulf St Vincent - Rogues Point - Artificial reef**

Department of Planning, Transport and Infrastructure SA Notice 9/2017

An artificial reef is being developed in an area bounded by the following positions:

34° 30'.63 S 137° 53'.95 E  
34° 30'.63 S 137° 54'.12 E  
34° 30'.47 S 137° 54'.13 E  
34° 30'.47 S 137° 53'.95 E.

A lit raft exists in position 34° 30'.59 S 137° 53'.99 E.

**Chart temporarily affected - Aus 781**

**291(T)/2021 AUSTRALIA - SOUTH AUSTRALIA - Port Adelaide - Shoaling**

Department for Transport, Energy and Infrastructure SA Notice 38/2007

Silting has resulted in width restrictions being imposed in the main channel of the Port Adelaide River between No 40 beacon (34° 47'.86 S 138° 30'.79 E) and No 41 beacon (34° 48'.52 S 138° 30'.77 E).

Mariners should avoid the western side of the main channel and navigate with caution in this part of the River as the available navigable channel is now only 90 metres wide measured from the eastern edge.

Mariners intending to transit this section should contact the Manager Marine Operations, Flinders Ports Pty Ltd on (08) 8447 0622 to confirm maximum widths.

**Chart temporarily affected - Aus 130**

**492(P)/2021 AUSTRALIA - SOUTH AUSTRALIA - Masillon Island to Rocky Island - Islands out of position**

Australian Hydrographic Office

The following islands are charted out of position:

	<i>Charted position</i>	<i>Actual position</i>
Masillon Island	32° 33'.57 S 133° 17'.46 E	32° 33'.82 S 133° 17'.30 E
Fenelon Island	32° 34'.80 S 133° 17'.18 E	32° 35'.08 S 133° 16'.94 E
Hart Island	32° 38'.49 S 133° 09'.40 E	32° 38'.68 S 133° 08'.26 E
Cannan Reefs	32° 38'.37 S 133° 14'.92 E	32° 38'.78 S 133° 14'.42 E
Rocky Island	34° 48'.71 S 134° 42'.93 E	34° 48'.71 S 134° 43'.45 E.

Mariners are advised to navigate with caution in the area.

Charts will updated in due course.

**Chart which will be affected - Aus 341 - Aus 342 - Aus 343**

**613(T)/2021 AUSTRALIA - SOUTH AUSTRALIA - Thevenard - Yatala Channel - Harbour works**  
Department for Infrastructure and Transport SA Notice 16(T)/2021

Maintenance and construction activities are in progress on the Thevenard Jetty (32° 08'.95 S 133° 38'.48 E) and throughout the Yatala Channel (32° 11'.54 S 133° 35'.08 E)

All vessels will monitor VHF Ch 12.

Mariners are advised to navigate with caution in the area.

**Chart temporarily affected - Aus 120 - Aus 341**

**719(T)/2021 AUSTRALIA - SOUTH AUSTRALIA - Port Lincoln - Scientific instruments**  
Department for Infrastructure and Transport SA Notice 22(T)/2021

Scientific instruments exist on the seabed as follows:

<i>Position</i>	<i>Remarks</i>
34° 44.29' S 135° 57.34' E	
34° 46.91' S 135° 53.52' E	
34° 43.06' S 135° 54.27' E	2 poly surface floats

Mariners are advised to navigate with caution in the area.

**Chart temporarily affected - Aus 134 - Aus 776**

**803(T)/2021 AUSTRALIA - SOUTH AUSTRALIA - Gulf St Vincent - Investigator Straight to Adelaide - Scientific instruments**

*Former Notice - 771(T)/2021* is cancelled

Department for Infrastructure and Transport SA Notice 25(T)/2021

Special light buoys, *Fl.Y.2s*, exist in the following positions:

34° 51'.30 S 138° 21'.00 E  
35° 01'.50 S 138° 27'.00 E.

An unlit special buoy exists in position 35° 34'.20 S 136° 55'.53 E.

**Chart temporarily affected - Aus 130 - Aus 780 - Aus 781**

**587(T)/2022 AUSTRALIA - SOUTH AUSTRALIA - Wallaroo - Point Hughes - Harbour works**  
Department for Infrastructure and Transport SA Notice 18(T)/2022

Works associated with the construction of a new breakwater are in progress in the vicinity of position 33° 55'.88 S 137° 36'.29 E.

The works area is marked by special light buoys, *Fl.Y.4s*.

Mariners are advised to navigate with caution in the area.

**Chart temporarily affected - Aus 777**

**674(P)/2022 AUSTRALIA - SOUTH AUSTRALIA - Kangaroo Island - Cape Gantheaume - Shoaling**  
Department for Environment and Water SA

Latest survey indicates shoaler depths than those charted may exist in an area bounded by the following positions:

36° 04'.60 S 137° 14'.33 E  
36° 10'.46 S 137° 18'.29 E  
36° 10'.48 S 137° 28'.99 E  
36° 06'.90 S 137° 33'.76 E  
36° 05'.49 S 137° 32'.95 E  
36° 03'.40 S 137° 15'.00 E.

Mariners are advised to navigate with caution in the area.

Charts will be updated in due course.

**Chart which will be affected - Aus 346 - Aus 485**

**848(T)/2022 AUSTRALIA - SOUTH AUSTRALIA - Spencer Gulf - Light buoy unlit**

Department for Infrastructure and Transport SA Notice 36(T)/2022

The starboard lateral light buoy, *Fl.2s No1 Entrance* (33° 08'.98 S 137° 40'.11 E), is unlit.

**Chart temporarily affected - Aus 136 - Aus 778**

**909(T)/2022 AUSTRALIA - SOUTH AUSTRALIA - Thevenard - Light altered**

Department for Infrastructure and Transport SA Notice 40(T)/2022

The light, Q (32° 08'.96 S 133° 38'.36 E), has been temporarily altered to *F* and the white sector removed.

**Chart temporarily affected - Aus 120**

**910(T)/2022 AUSTRALIA - SOUTH AUSTRALIA - Yorke Peninsula - Myponie Point - Scientific instrument**

Department for Infrastructure and Transport SA Notice 38(T)/2022

A scientific instrument exists on the seabed in position 33° 49'.20 S 137° 37'.14 E.

Mariners are advised to navigate with caution in the area

**Chart temporarily affected - Aus 777 - Aus 778**

## VICTORIA

**379(T)/2018 AUSTRALIA - VICTORIA - Port Phillip - Williamstown - Light beacon unlit**  
Parks Victoria Notice 149(T)/2018

The special light beacon, *Fl.Y.3s* (37° 51'.84 S 144° 52'.08 E) is unlit.

**Chart temporarily affected - Aus 143 - Aus 155**

**678(T)/2019 AUSTRALIA - VICTORIA - Port Fairy Bay - Scientific instrument**  
*Former Notice - 844(T)/2018 is cancelled*  
Maritime Safety Victoria Notice 127(T)/2019

A special spherical light buoy, *Fl.Y.2-5s* exists in position 38° 22'.91 S 142° 17'.23 E.

**Chart temporarily affected - Aus 141 - Aus 349**

**1231(T)/2019 AUSTRALIA - VICTORIA - Golden Beach - Scientific instrument**  
*Former Notice - 571(T)/2019 is cancelled*  
Maritime Safety Victoria Notice 273(T)/2019

An orange conical light buoy, *Fl.4s*, exists in position 38° 15'.37 S 147° 25'.35 E.

Mariners are advised to navigate with caution in the area.

**Chart temporarily affected - Aus 357**

**1292(T)/2019 AUSTRALIA - VICTORIA - Port Phillip - Sandringham - Light beacon unlit**  
*Former Notice - 1170(T)/2019 is cancelled*  
Parks Victoria Notice 121(T)/2019, 285(T)/2019

The starboard lateral light beacon, *Fl(2)G.5s 5m 4M* (37° 56'.48 S 144° 59'.56 E), is unlit; a starboard lateral light buoy, *Fl(2)G.5s*, exists in position 37° 56'.51 S 144° 59'.53 E.

**Chart temporarily affected - Aus 143 - Aus 155**

**42(T)/2020 AUSTRALIA - VICTORIA - Port Phillip - Brighton - Obstruction**  
Parks Victoria Notice 296(T)/2018

An obstruction marked by a buoy exists in position 37° 54'.44 S 144° 58'.95 E.

**Chart temporarily affected - Aus 155**

**219(T)/2020 AUSTRALIA - VICTORIA - Portland Bay - Scientific instruments**  
Maritime Safety Victoria Notice 79(T)/2020

Subsurface scientific instruments exist 5m below the surface in the following positions:

38° 16'.05 S 141° 50'.82 E

38° 16'.10 S 141° 51'.17 E

38° 16'.14 S 141° 51'.56 E.

**Chart temporarily affected - Aus 140 - Aus 349**

**328(T)/2020 AUSTRALIA - VICTORIA - Port Fairy - Light unreliable**  
*Former Notice - 177(T)/2020 is cancelled*  
Maritime Safety Victoria

The light, *Fl(2)10s 12m 4M* (38° 23'.46 S 142° 15'.27 E), is unreliable.

**Chart temporarily affected - Aus 141 - Aus 349**

**888(T)/2020 AUSTRALIA - VICTORIA - Cape Duquesne - Scientific instruments**



Deakin University

Three special spherical light buoys, *Fl.Y.2-5s*, exist in the vicinity of 38°21'.70 S, 141°16'.53 E.

Mariners are advised to navigate with caution in the area.

**Chart temporarily affected - Aus 348**

**895(P)/2020 AUSTRALIA - VICTORIA - Port Welshpool to McLoughlins Entrance - Shoaling**  
Gippsland Ports

Latest survey shows shoaling and channel realignment in the following channels:

Middle Ground Channel (38° 42'.5 S 146° 31'.5 E)  
Snake Channel (38° 44'.4 S 146° 37'.0 E)  
Midge Channel (38° 41'.8 S 146° 39'.9 E)  
Port Albert Channel (38° 41'.5 S 146° 41'.2 E)  
Kate Kearney Channel (38° 41'.7 S 146° 43'.0 E)  
Kate Kearney Entrance (38° 41'.5 S 146° 45'.1 E)  
Tarra Channel (38° 40'.8 S 146° 45'.7 E)  
Boat Harbour Channel (38° 40'.4 S 146° 48'.4 E)  
Pelican Channel (38° 39'.3 S 146° 48'.7 E)  
Manns Beach Channel (38° 38'.8 S 146° 47'.4 E)  
Manns Channel (38° 40'.5 S 146° 49'.6 E)  
Oyster Bed Channel (38° 38'.5 S 146° 51'.2 E)  
McLoughlins Entrance (38° 37'.8 S 146° 53'.0 E).

Mariners are advised to navigate with caution in the area.

Charts will be updated in due course.

**Chart which will be affected - Aus 181**

**35(T)/2021 AUSTRALIA - VICTORIA - Port Phillip - Wyndham Marina - Light buoy off station**  
Parks Victoria Notice 357(T)/2020

The special light buoy, *Fl.Y.6s* (37° 57'.85 S 144° 42'.76 E), is off station.

Mariners are advised to navigate with caution in the area.

**Chart temporarily affected - Aus 155**

**350(T)/2021 AUSTRALIA - VICTORIA - Port Phillip - Corio Bay - Scientific instruments**  
Victorian Regional Channels Authority Notice 93(T)/2021

Scientific instruments exist on the seabed in the following positions:

38° 05'.17 S 144° 23'.31 E  
38° 05'.35 S 144° 24'.20 E.

**Chart temporarily affected - Aus 153 - Aus 157**

**409(T)/2021 AUSTRALIA - VICTORIA - Port Phillip - Corio Bay - Scientific instrument**  
Victorian Regional Channels Authority Notice 310(T)/2019

A scientific instrument marked by a special light buoy, *Fl.Y*, exists on the seabed in position 38° 05'.07 S 144° 23'.25 E.

**Chart temporarily affected - Aus 157**

**413(T)/2021 AUSTRALIA - VICTORIA - Port Phillip - Corio Bay - Light buoys; AIS**  
Victorian Regional Channels Authority Notices 16(T)/2018, 17(T)/2018, 72(T)/2018

Starboard lateral pillar light buoys exist as follows:

Position	Remarks
38° 06'.01 S 144° 22'.92 E	<i>F.Iso.G.3s TB2</i>
38° 06'.65 S 144° 22'.34 E	<i>F.Iso.G.3s TB1</i>

Starboard lateral virtual AIS also exist at the above positions.

**Chart temporarily affected - Aus 157**

**416(T)/2021 AUSTRALIA - VICTORIA - Portland - Shoaling**

Port of Portland Notice 56(T)/2021

Shoaling, with least depth 7.3m, extends 90m to the west of the main breakwater (38° 20'.65 S 141° 37'.40 E).

Mariners are advised to navigate with caution in the area.

**Chart temporarily affected - Aus 140**

**493(T)/2021 AUSTRALIA - VICTORIA - Barwon Head - Light buoy withdrawn eastwards**

Parks Victoria Notice 166(T)/2020

The special light buoy, *Fl. Y. 5s* (38° 17'.95 S 144° 32'.65 E), has been temporarily withdrawn.

**Chart temporarily affected - Aus 143**

**500(T)/2021 AUSTRALIA - VICTORIA - Port Phillip - Martha Cove Harbour - Dredging operations**

Parks Victoria Notice 28(T)/2021

Dredging operations are in progress in the entrance channel (38° 18'.37 S 144° 59'.56 E).

All hazards to navigation will display appropriate lights and shapes.

Mariners are advised to navigate with caution in the area.

**Chart temporarily affected - Aus 143**

**542(T)/2021 AUSTRALIA - VICTORIA - Port Phillip - Sandringham - Dredging operations**

Parks Victoria Notice 143(T)/2021

Dredging operations are in progress in the vicinity of position 37° 58'.0 S 145° 00'.2 E.

A dredge and support vessels are on site.

The dredge material will be deposited for beach renourishment along Edward Street Beach (37° 57'.35 S 145° 00'.34 E) and in Half Moon Bay (37° 58'.13 S 145° 00'.64 E).

All hazards to navigation will be marked by appropriate lights and shapes.

Mariners are advised to navigate with caution in the area.

**Chart temporarily affected - Aus 143 - Aus 155**

**578(T)/2021 AUSTRALIA - VICTORIA - Port Fairy - Light buoy off station**

Maritime Safety Victoria Notice 164(T)/2021

The port lateral light buoy, *Fl. R. 5s* (38° 22'.99 S 142° 15'.29 E), is off station.

**Chart temporarily affected - Aus 141**

**579(T)/2021 AUSTRALIA - VICTORIA - Port Phillip - Altona - Jetty**

Parks Victoria Notice 168(T)/2021

The jetty has been damaged and a portion of the jetty has washed ashore and is in position 37° 52'.27 S 144° 49'.81 E.

Submerged or semi submerged hazards may exist in the area.

The jetty is closed to all vessels and mariners are advised to navigate with caution in the area.

**Chart temporarily affected - Aus 143 - Aus 155**

**618(T)/2021 AUSTRALIA - VICTORIA - Port Phillip - Half Moon Bay - Obstructions**

Parks Victoria Notices 215(T), 218(T)/2021

The jetty (37° 58'.09 S 145° 00'.58 E) has been demolished. Shoaling and obstructions may exist in the area north of the jetty.

Mariners are advised to navigate with caution in the area.

**Chart temporarily affected - Aus 155****664(T)/2021 AUSTRALIA - VICTORIA - Western Port - Stony Point to Sandy Point - Shoaling**

Victorian Regional Channels Authority Notice 199/2019

Shoaling exists in the vicinity of the following positions:

<i>Position</i>	<i>Least depth</i>	<i>Remarks</i>
38°25'.5 S 145° 13'.8 E	13.6m	Extending up to 100m into shipping channel
38°22'.8 S 145° 14'.7 E	13.2m	Extending up to 50m into shipping channel
38°21'.9 S 145° 14'.4 E	13.5m	Extending up to 40m into shipping channel
38°22'.1 S 145° 14'.3 E	13.8m	Extending up to 10m into shipping channel

Mariners are advised to navigate with caution in the area.

**Chart temporarily affected - Aus 151****665(T)/2021 AUSTRALIA - VICTORIA - Western Port - Hanns Inlet - Light beacons unlit**

HMAS Cerberus

The light beacons, *Fl.G.8s* (38° 23'.26 S 145° 13'.95 E) and *Fl.R.8s* (38° 23'.30 S 145° 13'.94 E) are unlit.

**Chart temporarily affected - Aus 151****859(T)/2021 AUSTRALIA - VICTORIA - Western Port - Crib Point - Exclusion zone**

Maritime Safety Victoria Notice 265(T)/2021

The Ex-HMAS OTAMA (Oberon class submarine) located 800 metres north of Crib Point jetty has been relocated to position 38° 20'.66 S 145° 13'.27 E, with a 200 metre exclusion zone.

A 200 metre exclusion zone remains at its previous location (38° 20'.48 S 145° 13'.45 E).

Mariners are advised to navigate with caution in the area.

**Chart temporarily affected - Aus 151****995(P)/2021 AUSTRALIA - VICTORIA - Port Albert - Nav aids to be withdrawn**

Gippsland Ports Notice 9(P)/2021

Nav aids in the channel between positions 38° 41'.04 S 146° 38'.02 E and 38° 39'.43 S 146° 39'.52 E will be withdrawn.

Eight new buoys will be established between positions 38° 41'.04 S 146° 38'.02 E and 38° 40'.17 S 146° 38'.70 E.

**Chart which will be affected - Aus 181****1004(T)/2021 AUSTRALIA - VICTORIA - Port Phillip - Brighton - Light buoy unlit**

Parks Victoria Notice 324(T)/2021

The special light buoy, *Fl(3)Y.10s R2* (37° 54'.55 S 144° 56'.33 E), is unlit.

**Chart temporarily affected - Aus 155****1032(T)/2021 AUSTRALIA - VICTORIA - Port Phillip - Chelsea - Beacon destroyed**

Parks Victoria Notice 333(T)/2021

The special beacon (38° 03'.47 S 145° 06'.74 E) has been destroyed.

**Chart temporarily affected - Aus 143**

**1033(T)/2021 AUSTRALIA - VICTORIA - Port Phillip - Beaumaris Bay - Buoy**  
Parks Victoria Notice 353(T)/2021

A special buoy exists in position 37° 59'.50 S 145° 03'.56 E.

**Chart temporarily affected - Aus 155**

**40(T)/2022 AUSTRALIA - VICTORIA - Port Phillip - Scientific instruments**  
*Former Notice - 496(T)/2021 is cancelled*  
Victorian Ports Corporation (Melbourne) Notice 419(T)/2021

Special light buoys, *Fl. Y. 2.5s*, exist in the following positions:

37° 58'.72 S 144° 59'.73 E

37° 59'.10 S 144° 46'.51 E

38° 03'.80 S 144° 52'.00 E

38° 08'.16 S 144° 45'.18 E

38° 09'.73 S 145° 03'.26 E

38° 18'.09 S 144° 52'.36 E.

**Chart temporarily affected - Aus 143 - Aus 155 - Aus 157**

**81(T)/2022 AUSTRALIA - VICTORIA - Geelong - Survey**  
Ports Victoria Notice 025(T)/2022

The jack up barge *JUB II* and support vessel *Taurus (MB 209)* are conducting geotech operations in the vicinity of position 38° 05'.32 S 144° 23'.34 E.

All vessels will display appropriate lights and shapes and will monitor VHF Ch 12/16. A 100 m exclusion zone around barge is requested.

Mariners are advised to navigate with caution in the area.

**Chart temporarily affected - Aus 157**

**86(T)/2022 AUSTRALIA - VICTORIA - Port Phillip - Light buoy off station**  
Parks Victoria Notice 401(T)/2021

The special light buoy, *Fl. Y. 5s* (38° 00'.78 S 145° 03'.60 E), is off station.

**Chart temporarily affected - Aus 143 - Aus 155**

**90(T)/2022 AUSTRALIA - VICTORIA - Western Port - Exclusion zone**  
Ports Victoria NTM 015-22

All unauthorised vessels within Port of Hastings waters are prohibited from entering within 100 metres of the vessel *SUI SO FRONTIER* during transit and while berthed.

Mariners are advised to navigate with caution in the area.

**Chart temporarily affected - Aus 151 - Aus 801 - Aus 4709 (INT 709)**

**133(T)/2022 AUSTRALIA - VICTORIA - Port Phillip - Rye - Harbour works**  
Parks Victoria Notice 34(T)/2022

Works to upgrade the pier are in progress in the vicinity of position 38° 22'.03 S 144° 49'.36 E.

The pier will be closed for the duration of the works and only authorised vessels are permitted to enter the works area.

All vessels will display appropriate lights and shapes.

Mariners are advised to navigate with caution in the area.

**Chart temporarily affected - Aus 143**

**294(T)/2022 AUSTRALIA - VICTORIA - Port Phillip - Point Wilson - Exclusion zone**

*Former Notice - 1078(T)/2021 is cancelled*

Victorian Regional Channels Authority Notice 239/2020, Parks Victoria Notice 104/2022

A 300m exclusion zone exists outwards from the centreline of Point Wilson Pier (38° 05'.54 S 144° 31'.48 E). It is marked by special light buoys, *Iso.2s*, in the following positions:

38° 05'.51 S 144° 30'.73 E  
38° 05'.68 S 144° 31'.32 E  
38° 05'.84 S 144° 31'.86 E  
38° 05'.89 S 144° 32'.45 E  
38° 05'.64 S 144° 32'.48 E  
38° 05'.55 S 144° 32'.04 E  
38° 05'.38 S 144° 31'.47 E  
38° 05'.20 S 144° 30'.93 E.

Only vessels involved in the remediation works are permitted to enter the area.

Mariners are advised to navigate with caution in the area.

**Chart temporarily affected - Aus 143 - Aus 157**

**295(T)/2022 AUSTRALIA - VICTORIA - Port Phillip - Wyndham Marina - Light unlit**

Parks Victoria Notice 102(T)/2022

The light, *WRG 3M* (37° 58'.15 S 144° 42'.52 E), is unlit.

**Chart temporarily affected - Aus 143 - Aus 155**

**630(T)/2022 AUSTRALIA - VICTORIA - Cape Duquesne - Scientific instruments**

Maritime Safety Victoria Notice 165(T)/2019

Scientific instruments exist as follows:

<i>Position</i>	<i>Remarks</i>
38° 24'.52 S 141° 16'.26 E	25m below surface
38° 24'.24 S 141° 17'.48 E	84m below surface
38° 24'.10 S 141° 18'.04 E	76m below surface
38° 23'.97 S 141° 18'.60 E	69m below surface
38° 23'.83 S 141° 19'.16 E	70m below surface
38° 23'.69 S 141° 19'.73 E	67m below surface
38° 23'.56 S 141° 20'.25 E	67m below surface
38° 23'.44 S 141° 20'.73 E	61m below surface
38° 23'.34 S 141° 21'.18 E	50m below surface
38° 23'.24 S 141° 21'.57 E	30m below surface
38° 23'.15 S 141° 21'.91 E	18m below surface.

**Chart temporarily affected - Aus 140 - Aus 348 - Aus 349**

**638(T)/2022 AUSTRALIA - VICTORIA - Port Phillip - Chelsea - Buoy off station westwards**

Parks Victoria Notice 263(T)/2022

The special buoy, *No2* (38° 03'.07 S 145° 04'.52 E), is off station.

**Chart temporarily affected - Aus 143 - Aus 155**

**747(T)/2022 AUSTRALIA - VICTORIA - Ninety Mile Beach - Traffic separation scheme southwestwards**

Australian Maritime Safety Authority

Decommissioning of oil and gas infrastructure will take place at Blackback Prod Well (38° 32'.42 S 148° 33'.24 E), Gudgeon Well (38° 30'.82 S 148° 28'.17 E) and Terakihi Well (38° 30'.27 S 148° 32'.89 E).

New temporary shipping fairways and a separation zone have been established to keep transiting ships away from decommissioning activities. The new shipping fairways and separation zone are bound by the following positions:

Northeast bound lane	38° 36'.941 S	148° 45'.842 E
	38° 39'.507 S	148° 48'.047 E
	38° 44'.600 S	148° 23'.000 E

38° 42'.034 S 148° 20'.795 E.

Southwest bound lane  
 38° 33'.407 S 148° 42'.545 E  
 38° 35'.750 S 148° 44'.746 E  
 38° 40'.844 S 148° 19'.699 E  
 38° 38'.500 S 148° 17'.500 E.

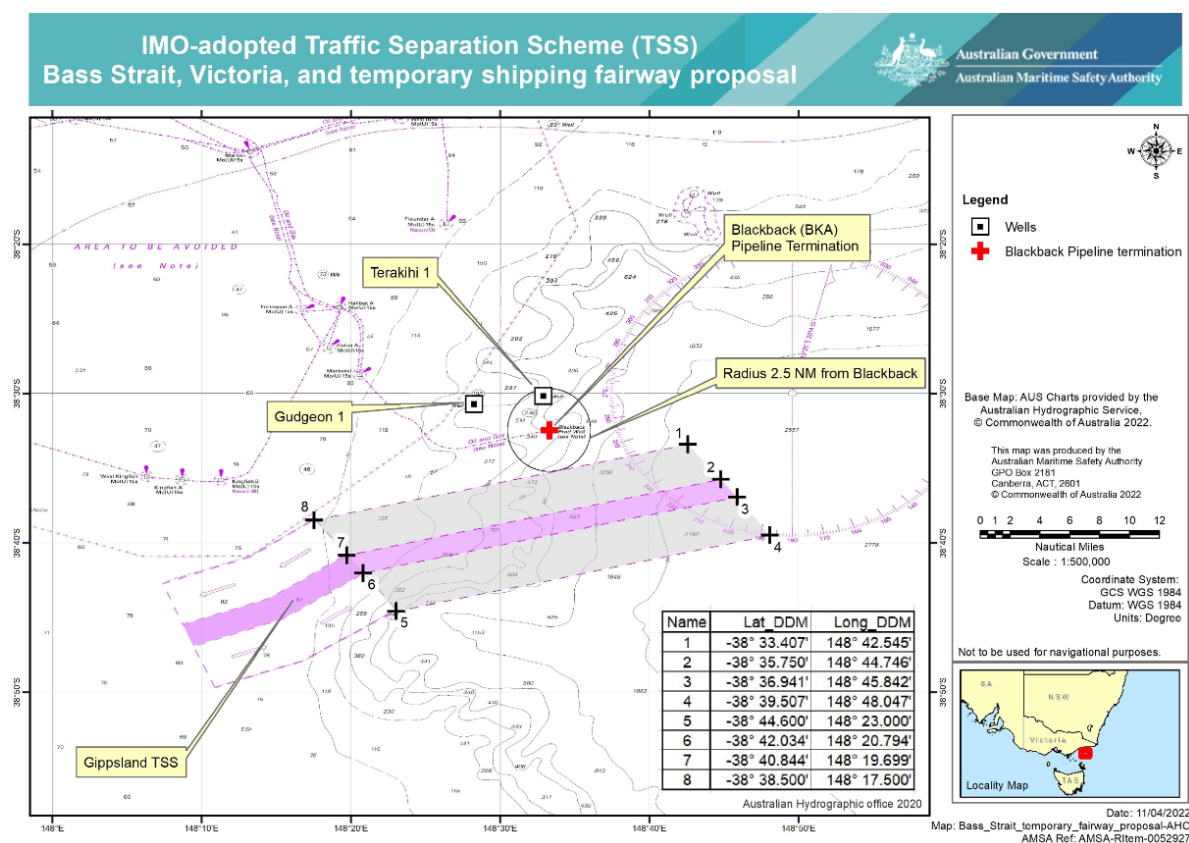
Separation zone  
 38° 35'.750 S 148° 44'.746 E  
 38° 36'.941 S 148° 45'.842 E  
 38° 42'.034 S 148° 20'.795 E  
 38° 40'.844 S 148° 19'.699 E.

The fairways and separation zone come into effect on 1 August 2022 at 0000 UTC and will remain in place until further notice.

Mariners should follow the appropriate traffic lane and navigate in the general direction of traffic flow for that lane. They should, as far as practicable, keep clear of the separation zone.

Due to an increased risk of collision, particularly with vessels that may be restricted in their ability to manoeuvre, mariners should keep a good look out and take early action to avoid collisions.

*Note:* For e-notice users, please see full edition for map.



**Chart temporarily affected - Aus 357 - Aus 487**

**749(T)/2022 AUSTRALIA - VICTORIA - Port Phillip - Police Point - Buoy off station**  
 Parks Victoria Notice 299(T)/2022

The special buoy (38° 18'.70 S 144° 42'.09 E) is off station.

**Chart temporarily affected - Aus 144**

**750(T)/2022 AUSTRALIA - VICTORIA - Seaspray - Platform unlit southwards**  
 Australian Maritime Safety Authority Auscoast Warning 133/2021

The *Perch* platform, *Mo(U)15s* (38° 34'.13 S 147° 19'.35 E), is unlit.

**Chart temporarily affected - Aus 357 - Aus 487 - Aus 4601 (INT 601)**

**752(T)/2022 AUSTRALIA - VICTORIA - Seaspray - Platform unlit southeastwards**  
Australian Maritime Safety Authority Auscoast Warning 37/2022

The *Dolphin* platform, *Mo(U)15s* (38° 29'.24 S 147° 22'.65 E), is unlit.

**Chart temporarily affected - Aus 357 - Aus 487 - Aus 4601 (INT 601)**

**754(T)/2022 AUSTRALIA - BASS STRAIT - Racon non operational**  
Australian Maritime Safety Authority Auscoast Warning 171/2021

The racon at the *Flounder A* platform (38° 18'.65 S 148° 26'.36 E) is non operational.

**Chart temporarily affected - Aus 357 - Aus 487**

**804(T)/2022 AUSTRALIA - VICTORIA - Western Port - Warneet - Jetty closed**  
Parks Victoria Notice 327/2022

The jetty (38° 13'.66 S 145° 18'.35 E) has been deemed unsafe for public use and has been closed.

Temporary berthing is available at the floating pontoon.

**Chart temporarily affected - Aus 151**

**850(T)/2022 AUSTRALIA - VICTORIA - Port Campbell to Cape Woolamai - Subsea operations southwards**  
Beach Energy Limited

On or about 24 October 2022, MV *Siem Topaz* and an AUV will be conducting pipeline inspection works between the following positions:

38° 38'.08 S 142° 58'.56 E

39° 06'.99 S 142° 56'.05 E

and;

38° 33'.54 S 145° 29'.22 E

39° 50'.43 S 145° 49'.01 E.

Mariners are advised to navigate with caution in the area.

**Chart temporarily affected - Aus 349 - Aus 487 - Aus 787 - Aus 801**

**852(T)/2022 AUSTRALIA - VICTORIA - Port Phillip - South Channel - Shoaling; virtual AIS**  
*Former Notices - 508(T)/2021, 963(T)/2021, 803(T)/2022 are cancelled*  
Ports Victoria Notice 324(T)/2022

Shoaling exists in the South Channel and is marked by special virtual AIS as follows:

<i>Position</i>	<i>Remarks</i>
38° 17'.64 S 144° 41'.14 E	TB3
38° 17'.75 S 144° 41'.65 E	TB4
38° 18'.05 S 144° 43'.26 E	TB5
38° 18'.20 S 144° 44'.38 E	TB6
38° 19'.07 S 144° 48'.63 E	TB7
38° 19'.74 S 144° 54'.08 E	TB8.

Vessels with a draught greater than 13.5m are advised to navigate as follows:

**Inbound** north of TB3 and TB4 and south of TB5, TB6, TB7 and TB8

**Outbound** south of TB8, TB7 and TB6 and north of TB5, TB3 and TB4.

Mariners are advised to navigate with caution in the area.

**Chart temporarily affected - Aus 143 - Aus 144 - Aus 788**

**913(T)/2022 AUSTRALIA - VICTORIA - Port Phillip - Obstruction**  
Ports Victoria Notice 355(T)/2022

Anchorage A3 (37° 55'.13 S 144° 54'.63 E) is unavailable for anchoring due to a lost anchor.

A3 anchorage is marked by a special light buoy, *Fl.Y.5s*, in position 37° 55'.11 S 144° 54'.72 E.

Mariners are advised to navigate with caution in the area.

**Chart temporarily affected - Aus 143 - Aus 155**

**914(T)/2022 AUSTRALIA - VICTORIA - Port Phillip - Clifton Springs - Artificial reef**

Parks Victoria Notice 368(T)/2022

Works to establish an artificial reef are in progress in the vicinity of position 38° 09'.06 S 144° 33'.88 E.

Mariners are advised to navigate with caution in the area.

**Chart temporarily affected - Aus 157**

**915(T)/2022 AUSTRALIA - VICTORIA - Port Phillip - Mornington - Light beacon removed**

*Former Notice* - 637(T)/2022 is cancelled

Parks Victoria Notice 427(T)/2021, 268/2022, 360(T)/2022

The west cardinal light beacon, *VQ(9)10s* (38° 13'.42 S 145° 01'.58 E), has been removed; a west cardinal buoy exists in situ.

**Chart temporarily affected - Aus 143**



## TASMANIA

### **627(T)/2016 AUSTRALIA - TASMANIA - Pipe Clay Head to Pitt Water - Scientific instruments**

*Former Notice - 309(T)/2014 is cancelled*

University of Tasmania

Subsurface scientific instruments exist in the following positions:

42° 48'.25 S 147° 29'.91 E  
42° 48'.29 S 147° 31'.42 E  
42° 48'.43 S 147° 30'.02 E  
42° 49'.18 S 147° 34'.71 E  
42° 50'.70 S 147° 33'.57 E  
42° 50'.74 S 147° 35'.11 E  
42° 50'.90 S 147° 36'.91 E  
42° 51'.05 S 147° 32'.08 E  
42° 51'.33 S 147° 35'.89 E  
42° 51'.69 S 147° 34'.85 E  
42° 51'.82 S 147° 30'.92 E  
42° 51'.82 S 147° 33'.36 E  
42° 52'.35 S 147° 32'.10 E  
42° 52'.70 S 147° 36'.29 E  
42° 52'.94 S 147° 34'.16 E  
42° 53'.24 S 147° 31'.16 E  
42° 53'.79 S 147° 32'.67 E  
42° 53'.88 S 147° 37'.33 E  
42° 54'.20 S 147° 35'.44 E  
42° 54'.37 S 147° 30'.53 E  
42° 54'.47 S 147° 40'.80 E  
42° 54'.67 S 147° 33'.87 E  
42° 54'.92 S 147° 40'.78 E  
42° 55'.13 S 147° 31'.80 E  
42° 55'.36 S 147° 40'.76 E  
42° 55'.81 S 147° 40'.74 E  
42° 56'.99 S 147° 39'.68 E  
42° 57'.04 S 147° 38'.01 E  
42° 57'.15 S 147° 39'.22 E  
42° 57'.15 S 147° 37'.41 E  
42° 57'.28 S 147° 36'.79 E  
42° 57'.40 S 147° 36'.20 E  
42° 57'.51 S 147° 35'.59 E  
42° 57'.62 S 147° 34'.99 E  
42° 57'.73 S 147° 34'.44 E  
42° 57'.86 S 147° 33'.85 E  
42° 57'.96 S 147° 33'.30 E.

**Chart temporarily affected - Aus 171 - Aus 796**

### **263(T)/2018 AUSTRALIA - TASMANIA - Devonport - Shoaling**

HydroSurvey Australia

Shoaling exists in the Mersey River between positions 41° 11'.20 S 146° 21'.98 E and 41° 11'.48 S 146° 22'.10 E.

Mariners are advised to navigate with caution in the area.

**Chart temporarily affected - Aus 164**

### **183(P)/2020 AUSTRALIA - TASMANIA - North West Bay - Barretta - Infrastructure**

A Boon

The marina pontoons have been extended to seaward (43° 02'.95 S 147° 16'.14 E).

Mariners are advised to navigate with caution in the area.

Charts will updated in due course.

**Chart which will be affected - Aus 171 - Aus 174**

**522(T)/2020 AUSTRALIA - TASMANIA - D'Entrecasteaux Channel - Tower Bay - Harbour works; light buoys**  
Marine and Safety Tasmania Notice M98/2020

Mooring works are in progress, marked by special light buoys as follows:

<i>Position</i>	<i>Remarks</i>
43° 23'.38 S 147° 02'.34 E	<i>Fl. Y. 4s</i>
43° 23'.46 S 147° 02'.27 E	<i>Fl. Y. 4s</i>
43° 23'.36 S 147° 01'.98 E	
43° 23'.28 S 147° 02'.05 E	

**Chart temporarily affected - Aus 173**

**682(P)/2020 AUSTRALIA - TASMANIA - Franklin Sound - Shoaling**  
EOMAP

Latest survey shows shoaler depths than those charted may exist in an area bounded by the following positions:

40° 20'.41 S 148° 23'.65 E  
40° 13'.57 S 148° 27'.46 E  
40° 10'.81 S 148° 23'.17 E  
40° 11'.66 S 148° 16'.60 E  
40° 14'.42 S 148° 01'.81 E  
40° 23'.48 S 147° 59'.63 E.

Mariners are advised to navigate with caution in the area.

Charts will be updated in due course.

**Chart which will be affected - Aus 179 - Aus 798 - Aus 800**

**733(T)/2020 AUSTRALIA - TASMANIA - Burnie - Harbour works**

*Former Notice - 47(T)/2019 is cancelled*

Marine and Safety Tasmania Notice M217/2018, Toll Group

Harbour works associated with the extension of the wharf at berth 5 (41° 03'.04 S 145° 54'.70 E) are in progress.

Mariners are advised to navigate with caution in the area.

**Chart temporarily affected - Aus 163**

**1017(T)/2020 AUSTRALIA - TASMANIA - Pitt Water - Wreck**

Marine and Safety Tasmania Notice M213/2020

A wreck marked by a special spar buoy exists in position 42° 50'.19 S 147° 36'.58 E.

Mariners are advised to navigate with caution in the area.

**Chart temporarily affected - Aus 796**

**177(T)/2021 AUSTRALIA - TASMANIA - King Island - Grassy Harbour - Platform, submarine cable, prohibited area**

Marine and Safety Tasmania Notice M19/2021

A lit platform, *F*, exists in position 40° 03'.97 S 144° 03'.53 E.

A submarine power cable exists between positions 40° 03'.97 S 144° 03'.53 E and 40° 03'.91 S 144° 03'.53 E.

An entry prohibited area, with radius 125m, exists centred on position 40° 03'.97 S 144° 03'.53 E.

Mariners are advised to navigate with caution in the area.

**Chart temporarily affected - Aus 178**

**266(T)/2021 AUSTRALIA - TASMANIA - Burnie - Scientific instrument northeastwards**

Marine and Safety Tasmania Notice M67/2021

A special light buoy, *Fl. Y*, exists in position 41° 01'.32 S 146° 05'.36 E.

**Chart temporarily affected - Aus 799**

**510(T)/2021 AUSTRALIA - TASMANIA - Burnie - Scientific instrument northeastwards**  
Marine and Safety Tasmania Notice M138/2021

A special light buoy, *Fl.Y*, exists in position 41° 01'.36 S 146° 05'.38 E.

**Chart temporarily affected - Aus 799**

**673(T)/2021 AUSTRALIA - TASMANIA - Maria Island - Scientific instruments**  
Marine and Safety Tasmania

Subsurface scientific instruments exist on the seabed in the following positions:

42° 40'.08 S 147° 58'.04 E  
42° 39'.99 S 147° 58'.60 E  
42° 39'.91 S 147° 59'.16 E  
42° 39'.82 S 147° 59'.72 E  
42° 39'.74 S 148° 00'.28 E  
42° 39'.08 S 148° 10'.40 E  
42° 39'.28 S 148° 10'.92 E  
42° 39'.48 S 148° 11'.44 E  
42° 39'.68 S 148° 11'.96 E  
42° 39'.88 S 148° 12'.49 E  
42° 40'.08 S 148° 13'.01 E  
42° 40'.28 S 148° 13'.53 E  
42° 40'.48 S 148° 14'.05 E  
42° 40'.68 S 148° 14'.57 E  
42° 40'.88 S 148° 15'.10 E  
42° 41'.08 S 148° 15'.62 E  
42° 41'.28 S 148° 16'.14 E  
42° 41'.48 S 148° 16'.66 E  
42° 41'.68 S 148° 17'.18 E  
42° 41'.88 S 148° 17'.71 E  
42° 42'.08 S 148° 18'.23 E  
42° 42'.28 S 148° 18'.75 E  
42° 42'.48 S 148° 19'.27 E  
42° 42'.68 S 148° 19'.79 E  
42° 42'.87 S 148° 20'.32 E  
42° 43'.07 S 148° 20'.84 E  
42° 43'.26 S 148° 21'.26 E.

**Chart temporarily affected - Aus 766 - Aus 797**

**677(T)/2021 AUSTRALIA - TASMANIA - North West Bay - Mooring area**  
Marine and Safety Tasmania Notice M106/2021

A mooring area, marked by special light buoys, exists in an area bounded by the following positions:

43° 02'.75 S 147° 17'.91 E  
43° 02'.66 S 147° 18'.04 E  
43° 02'.74 S 147° 18'.15 E  
43° 02'.82 S 147° 18'.00 E.

Mariners are advised to navigate with caution in the area.

**Chart temporarily affected - Aus 171**

**722(T)/2021 AUSTRALIA - TASMANIA - Port Dalrymple - Bell Bay - Harbour works**  
Marine and Safety Tasmania Notice M207/2021

Remediation works are in progress at Bell Bay Berth 6 (41° 08'.39 S 146° 51'.14 E).

Mariners are advised to navigate with caution in the area.

**Chart temporarily affected - Aus 167**

**861(T)/2021 AUSTRALIA - TASMANIA - Devonport - Wreck**

Tasmanian Ports Corporation

A wreck, least depth 9.3m exists in position 41° 10'.03 S 146° 22'.07 E.

Mariners are advised to navigate with caution in the area.

**Chart temporarily affected - Aus 164**

**93(T)/2022 AUSTRALIA - TASMANIA - Perkins Island to Rocky Cape - Scientific instruments**

*Former Notice - 45(T)/2022 is cancelled*

Marine and Safety Tasmania Notice M354(T)/2021

Scientific instruments, 5m below the surface, exist in the following positions:

40° 44'.04 S 145° 09'.79 E

40° 45'.80 S 145° 13'.15 E

40° 48'.18 S 145° 18'.94 E

40° 50'.58 S 145° 26'.32 E.

**Chart temporarily affected - Aus 790 - Aus 799 - Aus 4709 (INT 709)**

**135(T)/2022 AUSTRALIA - TASMANIA - Devonport - Mersey River - Exclusion zone**

Marine and Safety Tasmania Notice M53(T)/2022

An exclusion zone exists in an area bounded by the coast and the following positions:

41° 11'.24 S 146° 21'.82 E

41° 11'.23 S 146° 21'.89 E

41° 10'.99 S 146° 21'.82 E

41° 10'.99 S 146° 21'.78 E.

Only authorised vessels are permitted to enter.

Mariners are advised to navigate with caution in the area.

**Chart temporarily affected - Aus 164**

**302(P)/2022 AUSTRALIA - TASMANIA - Stanley Harbour - Shoaling**

Veris

Latest survey indicates shoaler depths than those charted may exist in an area bounded by the following positions:

40° 46'.03 S 145° 18'.78 E

40° 46'.33 S 145° 18'.67 E

40° 46'.22 S 145° 18'.28 E.

The most significant shoals are as follows:

<i>Position</i>	<i>Depth</i>
40° 46'.19 S 145° 18'.20 E	4.3m
40° 46'.27 S 145° 18'.16 E	4.8m.

Mariners are advised to navigate with caution in the area.

Charts will be updated in due course.

**Chart which will be affected - Aus 178 - Aus 790**

**408(T)/2022 AUSTRALIA - TASMANIA - Port Fenton - Artificial reef northwestwards**

Marine and Safety Tasmania Notice M152/2022

Works to establish an artificial reef are in progress in an area bounded by the following positions:

41° 07'.45 S 146° 13'.22 E

41° 07'.35 S 146° 13'.22 E

41° 07'.35 S 146° 13'.37 E

41° 07'.45 S 146° 13'.37 E.

A 300m exclusion zone exists around the works.

Mariners are advised to navigate with caution in the area.

**Chart temporarily affected - Aus 164**

**410(P)/2022 AUSTRALIA - TASMANIA - Rocky Cape to East sandy Point - Shoaling**

Australian Hydrographic Office

Latest survey indicates shoaler depths than those charted may exist in an area bounded by the high water line and the following positions:

40° 42'.39 S 145° 05'.11 E  
40° 45'. 45S 145° 20'.92 E  
40° 56'. 19S 145° 49'.10 E  
41° 04'. 76S 146° 11'.06 E  
41° 06'. 47S 146° 28'.51 E  
41° 01'. 97S 146° 42'.97 E  
40° 56'. 62S 146° 55'.07 E  
40° 39'. 89S 147° 58'.89 E.

Mariners are advised to navigate with caution in the area.

Electronic Navigation Charts (ENCs) have been updated, Paper Charts will be updated in due course.

**Chart which will be affected - Aus 163 - Aus 164 - Aus 167 - Aus 178 - Aus 179 - Aus 487 - Aus 790 - Aus 798 - Aus 799 - Aus 800**

**854(T)/2022 AUSTRALIA - TASMANIA - D'Entrecasteaux Channel - Green Island - Artificial reef**

Marine and Safety Tasmania Notice M344/2022

Works to establish an artificial reef are in progress in an area bounded by the following positions:

43° 12'.59 S 147° 18'.27 E  
43° 12'.59 S 147° 18'.85 E  
43° 13'.02 S 147° 18'.85 E  
43° 13'.02 S 147° 18'.26 E.

An exclusion zone exists within the works area for all vessels not involved in the works.

Mariners are advised to navigate with caution in the area.

**Chart temporarily affected - Aus 173 - Aus 795 - Aus 796**

**855(T)/2022 AUSTRALIA - TASMANIA - Devonport - Mersey River - Bed levelling**

Marine and Safety Tasmania Notice M333/2022

Vessels *EDI* and *Constructor 4* are conducting bed levelling operations in the entrance channel (41° 10'.11 S 146° 22'.06 E) and in the vicinity of berths 3E (41° 10'.99 S 146° 22'.01 E) and 4W (41° 11'.20 S 146° 21'.81 E).

Vessels will monitor VHF Ch 14.

Mariners are advised to navigate with caution in the area.

**Chart temporarily affected - Aus 164**

**856(T)/2022 AUSTRALIA - TASMANIA - Huon River - Deep Bay - Wreck**

Marine and Safety Tasmania M339(T)/2022

A stranded wreck exists in position 43° 12'.73 S 147° 06'.39 E.

Mariners are advised to navigate with caution in the area.

**Chart temporarily affected - Aus 173 - Aus 795**

**858(T)/2022 AUSTRALIA - TASMANIA - Titan Point - Drilling operations**

Marine and Safety Tasmania Notice M345(T)/2022

Drilling operations are in progress in position 41° 04'.15 S 145° 58'.80 E.

Mariners are advised to navigate with caution in the area.

**Chart temporarily affected - Aus 163**

**916(T)/2022    AUSTRALIA - TASMANIA - Devonport - Virtual AIS**  
Marine and Safety Tasmania Notice M373(T)/2022

A reduced width of the channel is marked by virtual AIS as follows:

<i>Position</i>	<i>Remarks</i>
41° 10'.43 S 146° 21'.85 E	starboard lateral AIS
41° 10'.45 S 146° 21'.93 E	port lateral AIS
41° 10'.45 S 146° 21'.84 E	starboard lateral AIS
41° 10'.50 S 146° 21'.82 E	starboard lateral AIS
41° 10'.51 S 146° 21'.91 E	port lateral AIS
41° 10'.57 S 146° 21'.89 E	port lateral AIS.

**Chart temporarily affected - Aus 164**

## PAPUA NEW GUINEA and SOUTH PACIFIC

### **789(T)/2018 PAPUA NEW GUINEA - Bismarck Sea - Fish aggregating devices**

National Maritime Safety Authority PNG Warning 9/2018

17 fish aggregating devices exist in an area bounded by the following positions:

4° 30'.0 S 149° 55'.0 E  
4° 40'.0 S 149° 55'.0 E  
4° 40'.0 S 150° 45'.0 E  
4° 30'.0 S 150° 45'.0 E.

Mariners are advised to navigate with caution.

**Chart temporarily affected - Aus 4622 (INT 622)**

### **286(P)/2019 PAPUA NEW GUINEA - Madang Harbour - Shoaling**

LADS Flight

Latest survey shows shoaler depths than those charted may exist in an area bounded by the following positions:

05° 04'.51 S 145° 48'.06 E  
05° 11'.75 S 145° 47'.82 E  
05° 11'.91 S 145° 49'.61 E  
05° 10'.14 S 145° 50'.36 E  
05° 04'.14 S 145° 48'.99 E.

Mariners are advised to navigate with caution in the area.

Charts will be updated in due course.

**Chart which will be affected - PNG 646**

### **346(T)/2019 PAPUA NEW GUINEA - Huon Gulf - Light buoy off station**

National Maritime Safety Authority PNG Notice 9(T)/2017

The isolated danger light buoy, Q(2)5s (6° 48'.38 S 146° 58'.28 E), is off station.

**Chart temporarily affected - PNG 643**

### **968(P)/2019 PAPUA NEW GUINEA - Duke of York Island - Shoaling**

LADS Flight

Latest survey shows shoaler depths than those charted may exist in an area bounded by the following positions:

4° 07'.43 S 152° 28'.17 E  
4° 10'.10 S 152° 30'.20 E  
4° 11'.35 S 152° 30'.07 E  
4° 13'.66 S 152° 28'.38 E  
4° 15'.11 S 152° 25'.69 E  
4° 13'.13 S 152° 22'.60 E  
4° 11'.41 S 152° 23'.70 E  
4° 07'.06 S 152° 23'.88 E  
4° 06'.29 S 152° 24'.62 E  
4° 06'.17 S 152° 25'.41 E.

Mariners are advised to navigate with caution in the area.

Charts will be updated in due course.

**Chart which will be affected - Aus 545 - Aus 554 - PNG 679 - PNG 680**

### **1110(T)/2019 PAPUA NEW GUINEA - Oreore Channel - Light buoy off station**

National Maritime Safety Authority PNG Coastal Navigation Warning 39/2019

The port lateral light buoy, Q.R (10° 13'.68 S 150° 52'.78 E), is off station.

**Chart temporarily affected - PNG 628**

**1331(T)/2019 PAPUA NEW GUINEA - Isulailai Point - Light beacon unlit**  
National Maritime Safety Authority PNG Warning 43/2019

The light beacon, *Fl(2)5s 17m 9M* (10° 33'.63 S 150° 41'.71 E), is unlit.

**Chart temporarily affected - Aus 625 - PNG 508**

**516(T)/2020 PAPUA NEW GUINEA - Kimbe - Light beacon unlit**  
National Maritime Safety Authority PNG Notice 21(T)/2020

The light beacon, *Fl.G.5s 6m 4M No3* (5° 32'.00 S 150° 09'.56 E), is unlit.

**Chart temporarily affected - PNG 674 - PNG 677**

**564(T)/2020 PAPUA NEW GUINEA - Dampier Strait - Nesup Channel - Light buoys off station**  
National Maritime Safety Authority PNG , B Cooper

The port lateral light buoy, *Fl.R.2s* (5° 53'.27 S 148° 08'.70 E), and the starboard lateral light buoy, *Fl.G.2s* (5° 53'.92 S 148° 09'.05 E), are off station.

**Chart temporarily affected - PNG 673**

**668(T)/2020 PAPUA NEW GUINEA - Dauan Island - Light altered**  
HMAS *Mermaid*

The light, *Fl.R.6s* (9° 25'.38 S 142° 32'.07 E), has been temporarily altered to *F.R.*

**Chart temporarily affected - Aus 841**

**771(T)/2020 PAPUA NEW GUINEA - Boera Head - Light unlit**  
National Maritime Safety Authority PNG Warning 6/2019

The light, *Fl.2-5s 33m 10M* (9° 23'.39 S 147° 00'.85 E), is unlit.

**Chart temporarily affected - PNG 379 - PNG 647**

**826(P)/2020 PAPUA NEW GUINEA - Batumata Point - Shoaling**  
LADS Flight

Latest survey shows shoaler depths than those charted may exist in and around the islands and reefs in the area between Galovi (Howard) Reef (10° 11'.1 S 148° 08'.7 E) and Eunoro Island (10° 23'.6 S 149° 27.3 E).

Mariners are advised to navigate with caution in the area.

Charts will be updated in due course.

**Chart which will be affected - PNG 506 - PNG 507 - PNG 623**

**963(T)/2020 PAPUA NEW GUINEA - Caution Bay - Light beacon damaged**  
National Maritime Safety Authority PNG Notice 39/2020

The light beacon, *Fl.Bu.2s 8M RL2* (9° 17'.98 S 146° 58'.19 E), is damaged and unlit.

**Chart temporarily affected - PNG 647 - PNG 648**

**116(P)/2021 PAPUA NEW GUINEA - Kavieng to Neitab Island - Shoaling**  
LADS Flight

Latest survey shows shoaler depths than those charted may exist in an area bounded by the coast and the following positions:

2° 22'.61 S 150° 09'.71 E  
2° 21'.43 S 150° 08'.54 E



2° 20'.33 S 150° 09'.36 E  
2° 18'.98 S 150° 11'.37 E  
2° 18'.08 S 150° 15'.72 E  
2° 21'.25 S 150° 23'.71 E  
2° 27'.18 S 150° 31'.04 E  
2° 34'.90 S 150° 35'.68 E  
2° 36'.12 S 150° 42'.35 E  
2° 36'.96 S 150° 42'.41 E  
2° 36'.40 S 150° 35'.77 E  
2° 40'.83 S 150° 31'.32 E.

Shoaler depths may also exist between the Kavieng coast (2° 35'.21 S 150° 47'.31 E) and the islands (Nusa, Nusalik and Nago).

Mariners are advised to navigate with caution in the area.

Charts will be updated in due course.

**Chart which will be affected - PNG 392 - PNG 393 - PNG 543 - PNG 666**

**118(T)/2021 PAPUA NEW GUINEA - Madehas Island - Light unlit**

National Maritime Safety Authority PNG

The light, *Fl. 10s 137m 16M* (5° 27'.63 S 154° 38'.06 E), is unlit.

**Chart temporarily affected - Aus 399 - Aus 4604 (INT 604) - Aus 4622 (INT 622) - PNG 397 - PNG 684**

**481(T)/2021 PAPUA NEW GUINEA - Caution Bay - Light beacon unlit**

National Maritime Safety Authority PNG Coastal Navigation Warning 9/2021

The light beacon, *Fl. G. 3s 6M* (9° 18'.54 S 146° 57'.25 E), is unlit.

**Chart temporarily affected - PNG 647**

**985(T)/2021 PAPUA NEW GUINEA - Saibai Island - Shoaling**

*Former Notice - 201(T)/2021 is cancelled*

HMAS *Paluma*, HMAS *Mermaid*

Latest survey indicates shoaler depths than those charted exist in an area bounded by the following positions:

9° 20'.66 S 142° 36'.94 E  
9° 20'.15 S 142° 39'.81 E  
9° 17'.86 S 142° 48'.32 E  
9° 21'.86 S 142° 47'.07 E  
9° 21'.01 S 142° 40'.60 E  
9° 21'.80 S 142° 37'.67 E  
9° 22'.75 S 142° 37'.04 E  
9° 22'.72 S 142° 35'.37 E  
9° 22'.46 S 142° 34'.10 E  
9° 21'.74 S 142° 34'.60 E.

Mariners are advised to navigate with caution in the area.

Charts will be updated in due course.

**Chart temporarily affected - Aus 840 - Aus 841**

**1067(T)/2021 PAPUA NEW GUINEA - Tavui Point - Light unlit**

National Maritime Safety Authority PNG Coastal Navigation Warning 26/2021

The light, *Fl. 8s 47m 18M* (4° 08'.16 S 152° 10'.21 E), is unlit.

**Chart temporarily affected - Aus 4604 (INT 604) - Aus 4622 (INT 622) - PNG 545 - PNG 554 - PNG 680**

**208(T)/2022 PAPUA NEW GUINEA - Unei Island - Light unlit**

National Maritime Safety Authority PNG Coastal Navigation Warning 4/2022

The light, *Fl(4)16s 9m 10M* (3° 22'.69 S 143° 24'.58 E), is unlit.

**Chart temporarily affected - Aus 4622 (INT 622) - PNG 389 - PNG 651**

**327(T)/2022 PAPUA NEW GUINEA - Bonvouloir Islands - Aulelowa (Hastings) Island - Light unlit**

National Maritime Safety Authority PNG Coastal Navigation Warning 8/2022

The light, *Fl(2)6s 8m 10M* (10° 20'.48 S 151° 52'.07 E), is unlit.

**Chart temporarily affected - PNG 509 - PNG 512**

**670(P)/2022 PAPUA NEW GUINEA - Star Reefs Passage - Shoaling**

Fugro LADS

Latest survey indicates shoaler depths than those charted may exist in an area bounded by the following positions:

8° 16'.32 S 149° 35'.81 E

8° 17'.57 S 149° 34'.96 E

8° 26'.58 S 149° 42'.16 E

8° 34'.69 S 149° 54'.56 E

8° 33'.37 S 149° 55'.41 E

8° 27'.31 S 149° 50'.78 E.

Mariners are advised to navigate with caution in the area.

Charts will be updated in due course.

**Chart which will be affected - PNG 519**

**785(T)/2022 PACIFIC OCEAN - Scientific instruments**

UKHO

Grey pillar buoys exist in the following positions:

5° 02'.3 N 164° 49'.9 E

0° 00'.8 N 164° 59'.8 E

1° 59'.9 S 164° 58'.6 E

5° 01'.0 S 165° 10'.0 E

8° 02'.2 S 164° 46'.4 E.

**Chart temporarily affected - Aus 4604 (INT 604)**

**792(T)/2022 PAPUA NEW GUINEA - Ava Point - Light unlit**

National Maritime Safety Authority PNG Coastal Navigation Warning 25/2021

The light, *Fl.12s 188m 10M* (10° 34'.14 S 149° 52'.89 E), is unlit.

**Chart temporarily affected - Aus 4604 (INT 604) - PNG 507**

**794(T)/2022 PAPUA NEW GUINEA - Huon Gulf - Fish aggregating devices**

National Maritime Safety Authority PNG Coastal Navigation Warning 8/2018

23 fish aggregating devices exist in an area bounded by the following positions:

7° 00'.0 S 147° 40'.0 E

7° 55'.0 S 147° 40'.0 E

7° 55'.0 S 148° 50'.0 E

7° 00'.0 S 148° 50'.0 E.

Mariners are advised to navigate with caution.

**Chart temporarily affected - Aus 4622 (INT 622) - PNG 386 - PNG 521 - PNG 522 - PNG 523**

**829(T)/2022 PAPUA NEW GUINEA - Dekatuwe (Bright) Island - Light beacon unlit**

*Former Notice - 500(T)/2022 is cancelled*

National Maritime Safety Authority PNG Notice 10/2022, 14/2022

The light beacon, *Fl.2·5s 16m 10M* (10° 31'.89 S 151° 12'.74 E), is unlit.

**Chart temporarily affected - PNG 509**

**830(T)/2022 PAPUA NEW GUINEA - Kanaweya (Shortland) Reefs to Nuakata Passage - Light beacons unlit**

National Maritime Safety Authority PNG Notice 15/2022, 16/2022

The light beacons, *Fl(3)12s 11m 10M* (10° 30'.70 S 151° 08'.13 E) and *Fl(2)10s 7m 6M* (10° 23'.60 S 151° 00'.77 E), are unlit.

**Chart temporarily affected - PNG 508 - PNG 509 - PNG 628**

**831(T)/2022 PAPUA NEW GUINEA - Wadei Island - Light beacon unlit**

National Maritime Safety Authority PNG Notice 17/2022

The starboard lateral light beacon, *Fl(2)G.8s 7m 3M* (2° 39'.45 S 150° 37'.68 E), is unlit.

**Chart temporarily affected - PNG 543 - PNG 666**

EAST TIMOR

NIL

## MISCELLANEOUS

### **677(P)/2017 SOLOMON ISLANDS - Honiara and Lungga Roads - Shoaling** UKHO

Latest survey shows shoaler depths than those charted may exist in the approaches to Honiara and within Lungga Roads (9° 25'.0 S 159° 58'.8 E).

Charts will updated in due course.

**Chart which will be affected - SLB 101**

### **678(T)/2017 SOLOMON ISLANDS - Lungga Point - Light beacon unlit** Australian Hydrographic Service

The light beacon, *Fl(3)20s 10m 5M* (9° 24'.26 S 160° 01'.66 E), is unlit.

**Chart temporarily affected - SLB 101 - SLB 201**

### **91(P)/2018 SOLOMON ISLANDS - Ghizo Island - Shoaling** Secretariat of the Pacific Community

Latest survey shows shoaler depths than those charted may exist in and around the islands and reefs in the area between Naru Island (8° 08'.3 S 156° 55'.1 E) and Sepo Island (8° 03'.2 S 156° 49.5 E).

Mariners are advised to navigate with caution in the area.

Charts will be updated in due course.

**Chart which will be affected - SLB 102 - SLB 301 - SLB 302**

### **847(T)/2018 SOLOMON ISLANDS - Nusatupe Island - Topmark destroyed** Solomon Islands Maritime Safety Administration Notice 3/2018

The topmark on light beacon, *Fl(3)R.10s 10m 5M* (8° 05'.55 S 156° 51'.81 E), has been destroyed.

**Chart temporarily affected - SLB 102 - SLB 301 - SLB 302**

### **987(T)/2018 TIMOR-LESTE - Dili - Light unlit** HMAS *Paluma*

The light, *Fl.R.4s* (8° 33'.20 S 125° 34'.70 E), is unlit.

**Chart temporarily affected - Aus 901**

### **44(P)/2020 SOLOMON ISLANDS - Bina Harbour - Shoaling** HMAS *Leeuwin*

Latest survey shows shoaler depths than those charted may exist in Bina Harbour (8° 56'.3 S 160° 45'.0 E).

Mariners are advised to navigate with caution in the area.

Charts will be updated in due course.

**Chart which will be affected - SLB 104**

### **406(P)/2020 SOLOMON ISLANDS - Port Noro to Kuri Point - Shoaling** *Former Notice - 184(P)/2020 is cancelled* Australian Hydrographic Office , HMAS *Leeuwin*

Latest survey shows shoaler depths than those charted may exist in areas bounded by the following positions:

8° 15'.07 S 157° 11'.77 E

8° 15'.43 S 157° 11'.52 E

8° 15'.78 S 157° 11'.47 E  
8° 15'.78 S 157° 12'.00 E  
8° 15'.07 S 157° 11'.89 E;  
and  
8° 19'.68 S 157° 11'.83 E  
8° 21'.27 S 157° 12'.62 E  
8° 21'.09 S 157° 13'.14 E  
8° 19'.05 S 157° 12'.30 E  
8° 19'.17 S 157° 11'.76 E.

Mariners are advised to navigate with caution in the area.

Charts will be updated in due course.

**Chart which will be affected - SLB 102**

**80(P)/2022 SOUTHERN OCEAN - Antarctica - Mawson - Shoaling**

Australian Antarctic Division

Latest survey indicates shoaling in the approach to Mawson in the following locations

67° 25'.00 S 062° 46'.20 E  
67° 29'.58 S 062° 52'.92 E  
67° 30'.08 S 062° 50'.45 E  
67° 30'.70 S 062° 53'.35 E  
67° 30'.45 S 062° 51'.56 E  
67° 35'.00 S 062° 52'.25 E

Mariners are advised to navigate with caution in the area.

Charts will be updated in due course.

**Chart which will be affected - Aus 600 (INT 9036)**

**361(P)/2022 TIMOR-LESTE - Dili - Shoaling**

HMAS *Leeuwin*

Latest survey indicates shoaler depths than those charted may exist in an area bounded by the coast and the following positions:

8° 33'.82 S 125° 23'.74 E  
8° 32'.93 S 125° 23'.67 E  
8° 31'.38 S 125° 31'.30 E  
8° 32'.69 S 125° 31'.18 E.

Mariners are advised to navigate with caution in the area.

Charts will be updated in due course.

**Chart which will be affected - Aus 312 - Aus 313 - Aus 321**

**805(T)/2022 SOLOMON ISLANDS - Indispensable Strait - Alite Reef - Light beacon unlit**

Solomon Islands Maritime Safety Administration

The light beacon, *Q.10m 4M* (8° 51'.78 S 160° 36'.26 E), is unlit.

**Chart temporarily affected - SLB 304**

**807(T)/2022 SOLOMON ISLANDS - Nggela Channel - Indalilau Island - Light beacon unlit**

Solomon Islands Maritime Safety Administration

The light beacon, *Fl(2)10s 8m 10M* (9° 11'.60 S 160° 21'.65 E), is unlit.

**Chart temporarily affected - Aus 4604 (INT 604) - SLB 201 - SLB 304**

**849(T)/2022 SOUTHERN OCEAN - Rocket launches**

Southern Launch

Rocket launch activity may be conducted on a single occasion during the period 10 to 30 November 2022.

Rockets will be launched south from position 34° 56'.04 S 135° 38'.54 E.

Public notification of target launch days will be made on Southern Launch's social media channels and navigation warnings issued by JRCC Australia. On target launch days, local advisory broadcasts will be made on VHF Ch 16 and Ch 81.

Rocket components may impact the waters within an area bounded by the following positions:

35° 00'.0 S 135° 25'.0 E

35° 00'.0 S 135° 55'.0 E

37° 42'.0 S 137° 15'.0 E

40° 30'.0 S 137° 15'.0 E

40° 30'.0 S 135° 25'.0 E.

Mariners are advised to navigate with caution and keep well clear of the area.

**Chart temporarily affected - Aus 343 - Aus 346 - Aus 485 - Aus 776 - Aus 4709 (INT 709)**