

TEMPORARY AND PRELIMINARY NOTICES
In force on 2 September 2022

NEW SOUTH WALES

709(T)/2016 AUSTRALIA - NEW SOUTH WALES - Cape Byron - Obstructions eastwards
HMAS *Gascoyne*

Obstructions exist in positions 28° 36'.20 S 153° 44'.30 E and 28° 36'.95 S 153° 44'.02 E.

Chart temporarily affected - Aus 813

573(T)/2018 AUSTRALIA - NEW SOUTH WALES - Callo Point - Exclusion zone
NSW Roads and Maritime Services

A wreck exists off Callo Point and an exclusion zone exists bounded by the following positions:

36°36'.20 S 150°02'.45 E
36°36'.23 S 150°04'.13 E
36°37'.80 S 150°02'.58 E
36°37'.81 S 150°01'.32 E.

Mariners are advised to navigate with caution.

Chart temporarily affected - Aus 806

485(T)/2020 AUSTRALIA - NEW SOUTH WALES - Tathra to Seal Rocks - Obstructions
Transport for NSW Notice SY2028

Shipping containers and debris may exist along the coast and in offshore waters between Tathra (36° 43'.55 S 149° 59'.46 E) and Seal Rocks (32° 27'.86 S 152° 33'.22 E).

Mariners are advised to navigate with caution in the area.

Chart temporarily affected - Aus 489 - Aus 806 - Aus 807 - Aus 808 - Aus 809 - Aus 810 - Aus 4601 (INT 601) - Aus 4602 (INT 602) - Aus 4643 (INT 643)

549(T)/2020 AUSTRALIA - NEW SOUTH WALES - Port Kembla - Exclusion zone
Port Authority of New South Wales

A 50m exclusion zone exists around the northern end of berth 206 (34° 28'.26 S 150° 54'.67 E).

Mariners are not to enter the area without obtaining permission from the Harbour Master or VTIC.

Chart temporarily affected - Aus 195

602(T)/2020 AUSTRALIA - NEW SOUTH WALES - Ben Buckler - Scientific instruments southeastwards
Sydney Institute of Marine Science

Subsurface scientific instruments exist as follows:

<i>Position</i>	<i>Metres below surface</i>
33° 53'.74 S 151° 17'.30 E	27
33° 53'.91 S 151° 17'.75 E	41
33° 54'.16 S 151° 18'.18 E	58
33° 54'.42 S 151° 18'.60 E	63
33° 54'.69 S 151° 19'.06 E	64
33° 54'.95 S 151° 19'.52 E	64
33° 55'.21 S 151° 19'.94 E	71
33° 55'.46 S 151° 20'.37 E	70
33° 55'.71 S 151° 20'.79 E	80
33° 55'.98 S 151° 21'.25 E	80
33° 56'.24 S 151° 21'.71 E	82
33° 56'.49 S 151° 22'.16 E	87
33° 56'.75 S 151° 22'.59 E	90
33° 57'.06 S 151° 23'.02 E	98
33° 57'.32 S 151° 23'.47 E	119

33° 57'.84 S 151° 24'.32 E 127
34° 01'.16 S 151° 29'.70 E 145
34° 01'.46 S 151° 30'.18 E 149.

Chart temporarily affected - Aus 200 - Aus 808 - Aus 809

604(T)/2020 AUSTRALIA - NEW SOUTH WALES - Jervis Bay - Hyams Beach - Light buoy
Australian Maritime Warfare Centre

A special light buoy, *Fl.Y.5s*, exists in position 35° 06'.23 S 150° 42'.85 E.

Chart temporarily affected - Aus 807 - Aus 808

997(T)/2020 AUSTRALIA - NEW SOUTH WALES - Merimbula Bay to Broulee Island - Scientific instruments
Transport for NSW

Special light buoys, *Fl(5)Y.20s*, exist in the following positions:

35° 50'.9 S 150° 11'.3 E
35° 52'.8 S 150° 09'.7 E
36° 54'.5 S 149° 55'.0 E.

Chart temporarily affected - Aus 806 - Aus 807

105(T)/2021 AUSTRALIA - NEW SOUTH WALES - Port Jackson - Berrys Bay - Jetties ruined
Transport for NSW , NSW Roads and Maritime Services

Jetties and piers are ruined, and partially submerged obstructions may exist in an area bounded by the coast and the following positions:

33° 50'.70 S 151° 11'.69 E
33° 50'.70 S 151° 11'.76 E
33° 50'.67 S 151° 11'.85 E
33° 50'.63 S 151° 11'.84 E.

A west cardinal light beacon, *Q(9)15s*, exists in position 33° 50'.59 S 151° 11'.50 E.

Mariners are advised to navigate with caution in the area.

Chart temporarily affected - Aus 200

438(T)/2021 AUSTRALIA - TASMAN SEA - Tasman Basin - Light buoy off station
Australian Bureau of Meteorology

The special light buoy, *Fl.Y.2s* (44° 47'.0 S 161° 42'.0 E), is off station.

Chart temporarily affected - Aus 4601 (INT 601)

591(T)/2021 AUSTRALIA - NEW SOUTH WALES - Clarence River - Light unlit
Port Authority of New South Wales Notice 4(T)/2021

The rear leading light, *F.Bu* (29° 22'.68 S 153° 16'.96 E), is unlit.

Mariners are advised to use the newly established lateral buoys to navigate in the area.

Chart temporarily affected - Aus 222

593(T)/2021 AUSTRALIA - NEW SOUTH WALES - Port Kembla - Drilling operations
Port Authority of New South Wales

JUB *Sealift 1* and support vessels are conducting drilling operations in the vicinity of position 34° 28'.45 S 150° 54'.46 E.

Chart temporarily affected - Aus 195

594(T)/2021 AUSTRALIA - NEW SOUTH WALES - Port Kembla - Harbour works
Port Authority of New South Wales Notice 02/2021, 03/2021

Works associated with the construction of the LNG import facility are in progress at berth 101 (34° 27'.53 S 150° 53'.85 E).

A silt curtain, marked by special light buoys, has been established around the works in the following positions:

<i>Position</i>	<i>Remarks</i>
34° 27'.47 S 150° 53'.84 E	
34° 27'.48 S 150° 53'.83 E	special light buoy, Q.Y
34° 27'.49 S 150° 53'.81 E	
34° 27'.50 S 150° 53'.81 E	special light buoy, Q.Y
34° 27'.53 S 150° 53'.82 E	special light buoy, Q.Y
34° 27'.56 S 150° 53'.82 E	special light buoy, Q.Y
34° 27'.57 S 150° 53'.82 E	
34° 27'.60 S 150° 53'.83 E	special light buoy, Q.Y
34° 27'.61 S 150° 53'.87 E	special light buoy, Q.Y
34° 27'.62 S 150° 53'.89 E.	

Mariners are advised to navigate with caution in the area.

Chart temporarily affected - Aus 195

694(T)/2021 AUSTRALIA - NEW SOUTH WALES - Port Jackson - Sydney Harbour Bridge - Harbour works

Port Authority of New South Wales Notice 16/2021

Maintenance works are in progress on the Sydney Harbour Bridge (33° 51'.14 S 151° 12'.64 E).

Vessels with large air draft should participate in Sydney VTS.

Mariners are advised to navigate with caution.

Chart temporarily affected - Aus 200

880(T)/2021 AUSTRALIA - NEW SOUTH WALES - Cape Byron - Light buoy off station northwards

Byron Bay Deep Sea Fishing Club

The special light buoy, *Fl.Y.5s* (28° 35'.40 S 153° 38'.11 E), is off station.

Chart temporarily affected - Aus 813

61(T)/2022 AUSTRALIA - NEW SOUTH WALES - Port Jackson - Chowder Bay - Scientific instruments

Former Notice - 524(T)/2021 is cancelled

Department of Defence

Subsurface scientific instruments, 2m above seabed, exist in the following positions:

33° 50.42' S 151° 15.42' E
33° 50.39' S 151° 15.39' E
33° 50.38' S 151° 15.43' E.

The area will be marked by buoys.

Mariners are advised to navigate with caution in the area.

Chart temporarily affected - Aus 200

201(T)/2022 AUSTRALIA - NEW SOUTH WALES - Clarence River - Nav aids damaged; nav aids off station; nav aids destroyed

Port Authority of New South Wales Notice 2/2022

Nav aids in the Clarence River may be damaged, off station or destroyed due to a severe weather event.

The front leading light beacon, *Oc.Bu.4s*, (29° 23'.34 S 153° 20'.06 E) has been destroyed.

Mariners are advised to navigate with caution in the area.

Chart temporarily affected - Aus 222 - Aus 812 - Aus 813

202(T)/2022 AUSTRALIA - NEW SOUTH WALES - Kiama - Fish aggregating device off station eastwards

Department of Primary Industries - Fisheries

The special light buoy, *Fl. Y. 5s FAD (Oct-May)* (34° 41'.0 S 150° 59'.5 E), is off station and in position 34° 41'.78 S 150° 59'.25 E.

Chart temporarily affected - Aus 808

203(T)/2022 AUSTRALIA - NEW SOUTH WALES - Twofold Bay - Eden - Snug Cove - Harbour works; exclusion zone
Port Authority of New South Wales Notice 122/2022

Works associated with the construction of a wave attenuator are in progress. An exclusion zone marked by special light buoys, *Fl. Y. 3s*, exists in an area bounded by the following positions:

37° 04'.37 S 149° 54'.41 E
37° 04'.37 S 149° 54'.39 E
37° 04'.37 S 149° 54'.36 E
37° 04'.39 S 149° 54'.32 E
37° 04'.41 S 149° 54'.27 E
37° 04'.43 S 149° 54'.22 E
37° 04'.45 S 149° 54'.18 E
37° 04'.43 S 149° 54'.15 E
37° 04'.40 S 149° 54'.12 E
37° 04'.37 S 149° 54'.09 E
37° 04'.33 S 149° 54'.16 E
37° 04'.29 S 149° 54'.22 E
37° 04'.33 S 149° 54'.27 E
37° 04'.31 S 149° 54'.33 E
37° 04'.31 S 149° 54'.38 E
37° 04'.35 S 149° 54'.42 E.

Mariners are advised to navigate with caution in the area.

Chart temporarily affected - Aus 192

228(T)/2022 AUSTRALIA - NEW SOUTH WALES - Botany Bay - Port Botany - Light beacon destroyed
Port Authority of New South Wales Notice 14/2022

The east cardinal light beacon, *Q(3)10s* (33° 58'.37 S 151° 11'.76 E), has been destroyed; a light buoy, *Q*, exists in situ.

Chart temporarily affected - Aus 198

229(P)/2022 AUSTRALIA - NEW SOUTH WALES - Clarence River - Shoaling
Port Authority of New South Wales

Latest survey indicates shoaler depths than those charted may exist in the entrance to Clarence River.

The most significant shoal being depth, *4.8m*, in position 29° 25'.67 S 153° 22'.75 E.

Mariners are advised to navigate with caution in the area.

Charts will be updated in due course.

Chart which will be affected - Aus 222 - Aus 812 - Aus 813

231(T)/2022 AUSTRALIA - TASMAN SEA - Tasman Basin - Light buoy off station

Former Notice - 117(T)/2022 is cancelled
Australian Bureau of Meteorology

The special light buoy, *Fl. Y. 2s* (46° 57'.4 S 160° 20'.6 E), is off station.

Chart temporarily affected - Aus 4601 (INT 601)

272(T)/2022 AUSTRALIA - NEW SOUTH WALES - Narooma - Fish aggregating device off station eastwards
Department of Primary Industries - Fisheries

The special light buoy, *Fl. Y. 5s (Nov-May)* (36° 13'.17 S 150° 17'.45 E), is off station and in position 36° 14'.94 S 150° 17'.65 E.

Chart temporarily affected - Aus 806 - Aus 807

528(T)/2022 AUSTRALIA - NEW SOUTH WALES - Kingscliff - Harbour works

Harcam Marine

On or about 20 July 2022, works associated with the installation of a pipeline will begin in an area bounded by the following positions:

28° 15'.09 S 153° 34'.44 E
28° 15'.24 S 153° 34'.60 E
28° 14'.79 S 153° 35'.22 E
28° 14'.63 S 153° 35'.03 E.

A barge will be on site and the towing of a pipeline will occur from the beach to the barge.

Mariners are advised to navigate with caution in the area.

Chart temporarily affected - Aus 813 - Aus 814

661(P)/2022 AUSTRALIA - NEW SOUTH WALES - PAPUA NEW GUINEA - SOLOMON ISLANDS - Submarine cable

33 Below Pty Ltd

A submarine cable exists between the following positions:

9° 30'.11 S 147° 10'.21 E
10° 44'.26 S 147° 41'.80 E
15° 00'.71 S 153° 28'.18 E
22° 03'.78 S 155° 56'.03 E
27° 11'.16 S 155° 58'.74 E
27° 13'.80 S 155° 59'.08 E
29° 00'.17 S 156° 46'.65 E
31° 27'.48 S 156° 41'.51 E
32° 14'.08 S 155° 21'.76 E
34° 04'.85 S 154° 18'.99 E
34° 29'.36 S 153° 13'.74 E
34° 31'.95 S 152° 18'.46 E
34° 23'.78 S 151° 49'.19 E
33° 54'.33 S 151° 16'.55 E;
and

9° 52'.00 S 159° 03'.00 E
10° 07'.33 S 158° 37'.49 E
11° 00'.19 S 158° 15'.24 E
15° 02'.89 S 153° 29'.50 E.

Charts will be updated in due course.

Mariners are advised to navigate with caution in the area.

Chart which will be affected - Aus 808 - Aus 4620 (INT 620) - Aus 4621 (INT 621) - Aus 4623 (INT 623) - Aus 4634 (INT 634) - Aus 4643 (INT 643)

663(P)/2022 AUSTRALIA - NEW SOUTH WALES - Sydney - Maroochydore - SOLOMON ISLANDS - Submarine cable

33 Below Pty Ltd

A submarine cable exists between the following positions:

2° 12'.0 S 156° 20'.0 E
11° 21'.9 S 163° 38'.8 E
19° 13'.8 S 159° 28'.9 E
25° 20'.8 S 160° 15'.7 E
26° 55'.1 S 157° 57'.9 E
32° 00'.9 S 154° 50'.8 E
32° 47'.6 S 154° 44'.5 E
34° 05'.2 S 153° 01'.0 E
33° 46'.6 S 152° 07'.2 E
33° 43'.3 S 151° 18'.0 E
and

26° 55'.0 S 157° 57'.9 E
26° 15'.6 S 156° 39'.3 E
26° 09'.3 S 153° 50'.2 E

26° 39'.5 S 153° 06'.7 E.

Charts will be updated in due course.

Mariners are advised to navigate with caution in the area.

Chart which will be affected - Aus 235 - Aus 809 - Aus 4601 (INT 601) - Aus 4604 (INT 604) - Aus 4622 (INT 622) - Aus 4623 (INT 623) - Aus 4634 (INT 634) - Aus 4643 (INT 643)

QUEENSLAND

605(T)/2016 AUSTRALIA - QUEENSLAND - Bundaberg - Middle Reach - Shoaling Maritime Safety Queensland

Shoaling, with a least depth of *0.7m*, exists in the vicinity of position 24° 45'.27 S 152° 23'.82 E.

Chart temporarily affected - Aus 242

225(P)/2017 AUSTRALIA - CORAL SEA - Diamond Islets - Shoaling LADS Flight

Shoaler depths than those charted exist in the vicinity of the Diamond Islets.

Charts will updated in due course.

Chart which will be affected - Aus 614 - Aus 4620 (INT 620) - Aus 4621 (INT 621)

418(T)/2017 AUSTRALIA - QUEENSLAND - Daydream Island - Lights unlit; light buoys established Maritime Safety Queensland Notice 179(T)/2017

The leading lights, *2F.Bu.5M* (20° 15'.10 S 148° 48'.87 E), are unlit.

A starboard lateral light buoy, *Fl.G.1-3s*, exists in positions 20° 14'.61 S 148° 49'.75 E.

A port lateral light buoy, *Fl.R.1-3s*, exists in positions 20° 14'.67 S 148° 49'.77 E.

Chart temporarily affected - Aus 252 - Aus 253

461(T)/2017 AUSTRALIA - QUEENSLAND - Bowen - Obstruction Maritime Safety Queensland

An obstruction marked by a special light buoy, *Fl.Y.2-5s*, exists in position 20° 01'.40 S 148° 15'.26 E.

Chart temporarily affected - Aus 268

470(T)/2017 AUSTRALIA - QUEENSLAND - North Gardner Bank - Foul ground Maritime Safety Queensland Notice 24/2017

A foul ground exists in position 24° 56'.30 S 153° 26.90 E.

Chart temporarily affected - Aus 816

523(P)/2017 AUSTRALIA - QUEENSLAND - Great Barrier Reef - Joist Reef to Hydrographers Passage - Shoaling LADS Flight

Latest survey shows shoaler depths than those charted may exist in an area bounded by the following positions:

19° 27'.1 S 149° 38'.9 E

20° 12'.2 S 149° 39'.1 E

20° 12'.2 S 150° 18'.5 E

19° 39'.2 S 150° 18'.5 E

Charts will updated in due course.

Chart which will be affected - Aus 821 - Aus 824 - Aus 825

989(P)/2017 AUSTRALIA - CORAL SEA - Portlock Reefs - Reefs LADS Flight

Latest survey shows uncharted reefs exist in area bounded by the following positions:

9° 33'.30 S 144° 46'.00 E

9° 33'.90 S 144° 42'.50 E

9° 36'.60 S 144° 42'.70 E

9° 37'.70 S 144° 45'.50 E.

Mariners are advised to navigate with caution in the area.

Charts will be updated in due course.

Chart which will be affected - Aus 377

27(T)/2018 AUSTRALIA - QUEENSLAND - Brisbane - Redcliffe Jetty - Harbour works
Maritime Safety Queensland

Harbour works are in progress at the head of Redcliffe Jetty (27° 13'.567 S 153° 07'.047 E)

All vessels will display appropriate lights and symbols.

Mariners are advised to navigate with caution

Chart temporarily affected - Aus 236

72(T)/2018 AUSTRALIA - QUEENSLAND - Fitzroy Island - Bird Rock - Light buoys
Former Notice - 29(T)/2018 is cancelled
Maritime Safety Queensland Notice 503(T)/2017

Two special light buoys, *Fl. Y.2-5s* exist in position 16° 55'.43 S 145° 59'.43 E.

Chart temporarily affected - Aus 830

213(T)/2018 AUSTRALIA - QUEENSLAND - Bribie Island - South Point - Shoaling
Maritime Safety Queensland

Shoaling exists at the southern end of Bribie Island, with a least depth of *0.5m* in position 27° 06'.18 S 153° 11'.24 E.

Mariners are advised to navigate with caution in the area.

Chart temporarily affected - Aus 236

215(T)/2018 AUSTRALIA - QUEENSLAND - Hinchinbrook Channel - Oyster Point - Wreck
Maritime Safety Queensland

A stranded wreck marked by a special light buoy, *Fl. Y.3s*, exists in position 18° 16'.10 S 146° 03'.06 E.

Chart temporarily affected - Aus 259

250(T)/2018 AUSTRALIA - QUEENSLAND - Burnett River - Distillery Reach - Wreck
Maritime Safety Queensland Notice 69(T)/2018

A wreck marked by a special light buoy, *Fl. Y.2-5s*, exists in position 24° 51'.10 S 152° 21'.84 E.

Mariners are advised to navigate with caution in the area.

Chart temporarily affected - Aus 242

455(T)/2018 AUSTRALIA - QUEENSLAND - Bundaberg - Burnett River - Light beacon
Maritime Safety Queensland Notice 178(T)/2018

A light beacon, *Fl. G.4s*, exists in position 24° 45'.26 S 152° 23'.87 E.

Chart temporarily affected - Aus 242

530(T)/2018 AUSTRALIA - QUEENSLAND - Moreton Bay - Mud Island - Scientific instrument
Former Notice - 1207(T)/2016 is cancelled
Maritime Safety Queensland

A scientific instrument marked by a special cylindrical light buoy, *Q.Y* exists in position 27° 20'.62 S 153° 13'.23 E.

Chart temporarily affected - Aus 236

531(T)/2018 AUSTRALIA - QUEENSLAND - Moreton Bay - Russell Island - Light Buoy;Wreck
Maritime Safety Queensland Notice 231(T)/2018

A wreck marked by a special cylindrical light buoy, *Fl.Y.2-5s*, exists in position 27° 38'.65 S 153° 22'.62 E.

Chart temporarily affected - Aus 236

687(T)/2018 AUSTRALIA - QUEENSLAND - Moreton Bay - Rainbow Channel - Shoaling
Maritime Safety Queensland Notice 279(T)/2018

Shoaling has been reported in Rainbow Channel between beacon Wanga Wallen North (27° 25'.35 S 153° 25'.10 E) and beacon Wanga Wallen South (27° 27'.17 S 153° 24'.97 E).

Mariners are advised to navigate with caution in the area.

Chart temporarily affected - Aus 236

782(P)/2018 AUSTRALIA - QUEENSLAND - Flinders Reef - Shoaling
Maritime Safety Queensland

Latest survey shows shoaler depths than those charted may exist in areas bounded by the following positions:

17° 41'.74 S 148° 35'.82 E
17° 37'.88 S 148° 36'.44 E
17° 32'.09 S 148° 34'.36 E
17° 22'.81 S 148° 25'.78 E
17° 30'.72 S 148° 16'.29 E
17° 43'.51 S 148° 20'.39 E
17° 44'.26 S 148° 27'.71 E.

and:

17° 49'.85 S 148° 23'.54 E
17° 53'.82 S 148° 29'.12 E
17° 53'.16 S 148° 32'.28 E
17° 50'.79 S 148° 33'.13 E
17° 47'.63 S 148° 29'.64 E
17° 45'.93 S 148° 25'.72 E
17° 46'.73 S 148° 23'.97 E.

Mariners are advised to navigate with extreme caution in the area.

Charts will be updated in due course.

Chart which will be affected - Aus 615

1145(T)/2018 AUSTRALIA - QUEENSLAND - Moreton Bay - Raby Bay - Wreck
Maritime Safety Queensland Notice 468(T)/2018

A wreck marked by a special light buoy, *Fl.Y.2-5s*, exists in position 27° 30'.64 S 153° 16'.46 E.

Chart temporarily affected - Aus 236

177(T)/2019 AUSTRALIA - QUEENSLAND - Red Island Point - Wreck
Former Notice - 164(T)/2018 is cancelled
Maritime Safety Queensland Notice 83(T)/2019

A wreck marked by a special light buoy, *Fl.Y.4s*, exists in position 10° 50'.66 S 142° 22'.03 E.

Chart temporarily affected - Aus 294

334(T)/2019 AUSTRALIA - QUEENSLAND - Brisbane River - Bulimba Point - Wreck
Maritime Safety Queensland

A stranded wreck exists in position 27° 26'.57 S 153° 03'.11 E.

Chart temporarily affected - Aus 238

393(T)/2019 AUSTRALIA - QUEENSLAND - Weipa - South Channel - Harbour works
Maritime Safety Queensland Notice 167(T)/2019

Harbour works associated with beacon replacement are in progress in the South Channel in an area bounded by the following positions:

12°42'.72 S 141°39'.72 E
12°40'.55 S 141°49'.73 E
12°39'.83 S 141°49'.44 E
12°41'.82 S 141°39'.04 E

Mariners are advised to navigate with caution in the area, and create No Wash in the vicinity of the barges and pile driving operations.

Chart temporarily affected - Aus 4

440(T)/2019 AUSTRALIA - QUEENSLAND - Moreton Bay - Kounungai - Wreck; light buoy
Maritime Safety Queensland Notice 161(T)/2019

A wreck marked by a special light buoy, *Fl. Y. 2-5s*, exists in position 27° 17'.00 S 153° 23'.00 E.

Chart temporarily affected - Aus 236

483(T)/2019 AUSTRALIA - QUEENSLAND - Brisbane River - Humbug Reach - Harbour works; light buoy
Maritime Safety Queensland Notice 195(T)/2019

A special light buoy, *Fl. Y. 2-5s*, marks the end of a partially constructed jetty in position 27° 28'.21 S 153° 03'.28 E.

Chart temporarily affected - Aus 238

488(T)/2019 AUSTRALIA - QUEENSLAND - Karumba - Wreck northwards
Maritime Safety Queensland Notice 188(T)/2019

A stranded wreck marked by a special light buoy, *Fl. Y. 2-5s*, exists in position 17° 15'.36 S 140° 53'.89 E.

Chart temporarily affected - Aus 303

494(P)/2019 AUSTRALIA - CORAL SEA - Kenn Reefs and Frederick Reefs - Shoaling
LADS

Latest surveys indicate shoaler depths than those currently charted exist in an area bounded by the following positions:

21° 16'.05 S 155° 42'.52 E
21° 16'.64 S 155° 44'.44 E
21° 13'.83 S 155° 46'.76 E
21° 11'.42 S 155° 45'.73 E.

and

21° 01'.09 S 154° 21'.18 E
21° 01'.32 S 154° 23'.02 E
20° 59'.87 S 154° 24'.06 E
20° 55'.25 S 154° 23'.85 E
20° 54'.42 S 154° 23'.35 E
20° 58'.22 S 154° 20'.72 E.

Charts will be updated in due course. Mariners are advised to navigate with caution.

Chart which will be affected - Aus 611 - Aus 612

548(P)/2019 AUSTRALIA - QUEENSLAND - Hydrographers Passage - Shoaling
LADS Flight

Latest survey shows shoaler depths than those charted may exist in an area bounded by the following positions:
20° 36'.52 S 150° 04'.39 E

20° 30'.63 S 150° 17'.03 E
20° 23'.93 S 150° 16'.63 E
20° 06'.15 S 150° 04'.79 E
20° 11'.27 S 150° 00'.18 E
20° 21'.88 S 150° 04'.70 E
20° 27'.57 S 150° 09'.82 E
20° 32'.65 S 150° 01'.91 E.

Mariners are advised to navigate with caution in the area.

Charts will be updated in due course.

Chart which will be affected - Aus 821 - Aus 824

594(T)/2019 AUSTRALIA - QUEENSLAND - Boyne River - Obstruction

Maritime Safety Queensland Notice 250(T)/2019

An obstruction marked by a special light buoy, *Fl.Y*, exists in position 23° 55'.74 S 151° 21'.43 E.

Chart temporarily affected - Aus 246

603(T)/2019 AUSTRALIA - QUEENSLAND - Weipa - Albatross Bay - Scientific instruments

Maritime Safety Queensland Notice 242(T)/2019

Special light buoys, *Fl.Y.6s*, exist in the following positions:

12° 40'.10 S 141° 50'.77 E
12° 42'.09 S 141° 52'.00 E
12° 40'.42 S 141° 46'.62 E.

Chart temporarily affected - Aus 4

716(T)/2019 AUSTRALIA - QUEENSLAND - Daintree River - Light buoy withdrawn

Maritime Safety Queensland Notice 302(T)/2019

The safe water light buoy, *LFl.10s* (16° 18'.93 S 145° 27'.16 E), has been temporarily withdrawn.

Chart temporarily affected - Aus 831

723(T)/2019 AUSTRALIA - QUEENSLAND - Weipa - Tide gauge; light buoy

Maritime Safety Queensland Notice 319(T)/2019

A tide gauge marked by a special light buoy, *Fl.Y.6s*, exists in position 12° 44'.72 S 141° 29'.88 E.

Chart temporarily affected - Aus 4 - Aus 301

890(T)/2019 AUSTRALIA - QUEENSLAND - Brisbane River - Hamilton Reach - Harbour works

Maritime Safety Queensland Notice 375(T)/2019

The construction of a pontoon is being carried out by barges 'Steel Ranger' and 'Cobia' and support vessels. The barges and hazards will be lit.

Vessels will monitor VHF Ch13 and Ch16.

Mariners are advised to navigate with caution in the area.

Chart temporarily affected - Aus 238

951(T)/2019 AUSTRALIA - QUEENSLAND - Abbot Point - Light beacon unlit; light buoy established

Former Notice - 369(T)/2017 is cancelled

Maritime Safety Queensland

The east cardinal light beacon, *Q(3)10s* (19° 51'.12 S 148° 03'.89 E), is unlit.

A special conical light buoy, *Fl.Y.1-5s*, exists in position 19° 51'.05 S 148° 03'.95 E.

Chart temporarily affected - Aus 255 - Aus 826

105(T)/2020 AUSTRALIA - QUEENSLAND - Cape Bowling Green - Obstruction; light buoy

Maritime Safety Queensland Notice 19(T)/2020

An obstruction marked by a special light buoy, *Fl.Y.2-5s*, exists in position 19° 18'.26 S 147° 22'.96 E.

Chart temporarily affected - Aus 827

249(T)/2020 AUSTRALIA - QUEENSLAND - Richardson Reef to Newman Reef - Scientific instruments

Maritime Safety Queensland

A scientific instrument marked by an orange buoy exists in position 10° 07'.33 S 143° 02'.20 E.

A scientific instrument marked by a yellow buoy exists in position 10° 03'.33 S 143° 10'.18 E.

Chart temporarily affected - Aus 837 - Aus 839

286(T)/2020 AUSTRALIA - QUEENSLAND - Laguna Quays - Shoaling; nav aids

Former Notice - 917(T)/2017 is cancelled

Maritime Safety Queensland Notice 103(T)/2020

Shoaling exists within the entrance channel and waterways around the Laguna Quays Marina (20° 36'.0 S 148° 41'.0 E).

Nav aids marking the entrance channel and in the marina may not be operational.

Mariners are advised to navigate with caution in the area.

Chart temporarily affected - Aus 252

312(T)/2020 AUSTRALIA - QUEENSLAND - Brisbane River - Inner Reach - Harbour works

Maritime Safety Queensland Notice 126(T)/2020

The barge *Gosford* and support vessels *Turbo* and *Carl James* are conducting works at Port North Common User Berth No1 (27° 23'.03 S 153° 09'.29 E).

All vessels with display appropriate lights and shapes; and will monitor VHF Ch 12 and Ch 16.

Mariners are advised to navigate with caution in the area.

Chart temporarily affected - Aus 237

349(T)/2020 AUSTRALIA - QUEENSLAND - Brisbane River - Town Reach - Harbour works

Maritime Safety Queensland Notice 144(T)/2020

A special light buoy, *Fl.Y.2-5s*, exists in position 27° 28'.82 S 153° 01'.86 E.

Mariners are advised to navigate with caution in the area.

Chart temporarily affected - Aus 238

429(T)/2020 AUSTRALIA - QUEENSLAND - Mackay - Obstruction; light buoy

Maritime Safety Queensland Notice 183/2020

An obstruction marked by a special light buoy exists in position 21° 06'.43 S 149° 13'.52 E.

Chart temporarily affected - Aus 250

457(T)/2020 AUSTRALIA - QUEENSLAND - Cape Bowling Green - Obstruction southeastwards

Maritime Safety Queensland Notice 190(T)/2020

An obstruction, with least depth 15m, exists in position 19° 20'.27 S 147° 35'.97 E.

Mariners are advised to navigate with caution in the area.

Chart temporarily affected - Aus 826 - Aus 827

555(T)/2020 AUSTRALIA - QUEENSLAND - Gold Coast - Scientific instrument
Maritime Safety Queensland Notice 84(T)/2020

A special light buoy, *Fl(5)Y.20s*, exists in position 27° 58'.18 S 153° 26'.50 E.

Chart temporarily affected - Aus 814

561(T)/2020 AUSTRALIA - QUEENSLAND - The Broadwater - South Channel - Light buoys
Maritime Safety Queensland Notice 35(T)/2019

Special light buoys, *Fl.Y.3s*, exist in the following positions:

27° 56'.56 S 153° 25'.23 E

27° 56'.63 S 153° 25'.24 E

27° 56'.71 S 153° 25'.24 E

27° 56'.86 S 153° 25'.25 E

27° 56'.92 S 153° 25'.25 E.

Chart temporarily affected - Aus 814

958(T)/2020 AUSTRALIA - QUEENSLAND - Brisbane River - Bulimba Reach - Harbour works
Maritime Safety Queensland Notice 409(T)/2020

Barge *Enviro II* is conducting works to remove the jetty (27° 27'.11 S 153° 02'.95 E).

The area is marked by special light buoys, *Fl.Y.4s*.

Mariners are advised to navigate with caution in the area.

Chart temporarily affected - Aus 238

998(T)/2020 AUSTRALIA - QUEENSLAND - Boyne River - Light buoy off station
Maritime Safety Queensland Notice 423(T)/2020

The special light buoy, *Fl.Y.2.5s* (23° 55'.64 S 151° 22'.05 E), is off station and in position 23° 56'.18 S 151° 21'.40 E.

Chart temporarily affected - Aus 246

1008(T)/2020 AUSTRALIA - QUEENSLAND - Townsville - Wreck
Maritime Safety Queensland Notice 427(T)/2020

A wreck marked by a special light buoy, *Q.Y*, exists in position 19° 14'.91 S 146° 49'.57 E.

Mariners are advised to navigate with caution in the area.

Chart temporarily affected - Aus 256

1049(P)/2020 AUSTRALIA - TORRES STRAIT - Deliverance Island - Shoaling
HMAS *Albany*

Latest survey shows shoaling exists as follows:

Depth *Position*

1.1m 9° 32'.89 S 141° 27'.03 E

3.6m 9° 32'.22 S 141° 27'.73 E.

Mariners are advised to navigate with caution in the area.

Charts will be updated in due course.

Chart which will be affected - Aus 842

19(T)/2021 AUSTRALIA - QUEENSLAND - Thud Point - Scientific instrument

Maritime Safety Queensland Notice 4(T)/2021

A special light buoy, *Fl.Y.6s*, exists in position 13° 03'.14 S 141° 32'.82 E.

Chart temporarily affected - Aus 301

21(T)/2021 AUSTRALIA - CORAL SEA - Middleton Reef - Unexploded ordnance
Parks Australia

An exclusion zone exists in an area bounded by the following positions:

29° 27'.12 S 159° 02'.92 E

29° 26'.58 S 159° 02'.92 E

29° 26'.58 S 159° 03'.55 E

29° 27'.12 S 159° 03'.55 E.

Unexploded ordnance may exist in the area and mariners are advised to navigate with caution.

Chart temporarily affected - Aus 618

62(T)/2021 AUSTRALIA - QUEENSLAND - Gladstone - South Trees Island - Scientific instrument
Maritime Safety Queensland Notice 171(T)/2020

A scientific instrument marked by a light buoy, *Fl.Y.6s*, exists in position 23° 51'.71 S 151° 19'.62 E.

Chart temporarily affected - Aus 245 - Aus 246

64(T)/2021 AUSTRALIA - QUEENSLAND - Gladstone - Auckland Point Wharves - Harbour works
Maritime Safety Queensland 360(T)/2019

Construction of a mooring dolphin is in progress off the eastern end of berth No 4 (23° 50'.02 S 151° 15'.91 E) by vessel *AMS Shine* and the barge *M1201* and support vessels.

Vessels and hazards will display appropriate lights and shapes.

Vessels will monitor VHF Ch 13.

Mariners are advised to navigate with caution in the area.

Chart temporarily affected - Aus 245

74(T)/2021 AUSTRALIA - QUEENSLAND - Pumicestone Channel - Wreck, light buoy
Maritime Safety Queensland 466(T)/2020

A wreck marked by a special conical light buoy, *Fl.Y.2-5s*, exists in position 26° 48'.39 S 153° 07'.51 E.

Chart temporarily affected - Aus 235

197(T)/2021 AUSTRALIA - QUEENSLAND - Moreton Bay - Peel Island - Wreck
Maritime Safety Queensland , G Luck

A wreck exists in position 27° 30'.30 S 153° 19'.33 E.

Mariners are advised to navigate with caution in the area.

Chart temporarily affected - Aus 236

247(T)/2021 AUSTRALIA - QUEENSLAND - Cape Ferguson - Scientific instrument
Australian Institute of Marine Science

A special spar light buoy, *Q(4)Y.18s*, exists in position 19° 16'.52 S 147° 03'.84 E.

Chart temporarily affected - Aus 256

249(P)/2021 AUSTRALIA - QUEENSLAND - Holt Island to Hexham Island - Shoaling

LADS Flight

Latest survey shows shoaler depths than those charted may exist in areas bounded by the following positions:

22° 11'.75 S 150° 22'.51 E
22° 11'.90 S 150° 22'.99 E
22° 13'.77 S 150° 22'.25 E
22° 13'.51 S 150° 21'.60 E;
and
22° 00'.22 S 150° 23'.51 E
22° 01'.04 S 150° 23'.61 E
22° 02'.68 S 150° 18'.70 E
22° 01'.44 S 150° 16'.29 E
22° 00'.19 S 150° 21'.01 E.

Mariners are advised to navigate with caution in the area.

Charts will be updated in due course.

Chart which will be affected - Aus 260 - Aus 367 - Aus 822

251(T)/2021 AUSTRALIA - QUEENSLAND - Moreton Bay - Rainbow Channel - Wanga Wallen Bank - Wreck; light buoy

Maritime Safety Queensland Notice 80(T)/2021

A wreck marked by a special light buoy, *Fl.Y.2-5s*, exists in position 27° 26'.40 S 153° 25'.33 E.

Chart temporarily affected - Aus 236

328(T)/2021 AUSTRALIA - QUEENSLAND - Moreton Bay - Spitfire Channel - Light beacon unreliable

Maritime Safety Queensland Notice 103(T)/2021

The light beacon, *Fl.Y.1-5s S1* (27° 02'.88 S 153° 15'.99 E), is unreliable.

Chart temporarily affected - Aus 235 - Aus 236

330(T)/2021 AUSTRALIA - QUEENSLAND - Moreton Bay - Lamb Island - Wreck; light buoy

Maritime Safety Queensland Notice 104(T)/2021

A wreck marked by a special light buoy, *Fl.Y.2-5s*, exists in position 27° 37'.89 S 153° 22'.51 E.

Chart temporarily affected - Aus 236

332(T)/2021 AUSTRALIA - QUEENSLAND - Poll Islet - Wreck

Maritime Safety Queensland , Australian Border Force

A stranded wreck exists in position 10° 15'.17 S 142° 49'.58 E.

Chart temporarily affected - Aus 839 - Aus 841

336(T)/2021 AUSTRALIA - QUEENSLAND - Townsville - Ross River - Wreck; light buoy

Maritime Safety Queensland Notice 127(T)/2021

A wreck marked by a special light buoy, *Q.Y.*, exists in position 19° 16'.52 S 146° 49'.94 E.

Chart temporarily affected - Aus 256

337(P)/2021 AUSTRALIA - TORRES STRAIT - Boigu Island - Shoaling

HMAS *Leeuwin*

Latest survey shows shoaler depths than those charted may exist in areas bounded by the following positions:

9° 14'.38 S 142° 15'.82 E
9° 15'.78 S 142° 19'.88 E
9° 15'.49 S 142° 20'.00 E
9° 13'.58 S 142° 16'.26 E;
and

9° 12'.49 S 142° 15'.50 E
9° 12'.33 S 142° 13'.73 E
9° 13'.16 S 142° 13'.24 E
9° 13'.20 S 142° 15'.21 E.

Mariners are advised to navigate with caution in the area.

Charts will be updated in due course.

Chart which will be affected - Aus 841

378(T)/2021 AUSTRALIA - QUEENSLAND - Karumba - Shoaling

Former Notice - 819(T)/2020 is cancelled

Maritime Safety Queensland Notice 141/2021

Shoaling exists in the entrance channel between beacon No8 (17° 26'.36 S 140° 44'.73 E) and beacon No10 (17° 26'.65 S 140° 45'.32 E).

Mariners should not navigate along the charted recommended track between beacons No8 and No10 and instead should navigate between the Elbow Bank special light buoys, *Fl.Y.2-5s*, to follow the change in channel position.

Mariners are advised to navigate with caution in the area.

Chart temporarily affected - Aus 6

380(T)/2021 AUSTRALIA - QUEENSLAND - North Stradbroke Island - Polka Point - Obstruction

Maritime Safety Queensland Notice 142(T)/2021

An obstruction exists in position 27° 29'.52 S 153° 24'.09 E.

Mariners are advised to pass north of the obstruction and to navigate with caution in the area.

Chart temporarily affected - Aus 236

477(T)/2021 AUSTRALIA - QUEENSLAND - Bundaberg - Burnett River - Harbour works

Maritime Safety Queensland Notice 177(T)/2021

Vessel *Alkira* and barge *Steel Ranger* are conducting harbour works to remove piles in the vicinity of position 24° 46'.38 S 152° 22'.96 E.

Vessels will display appropriate lights and shapes.

Mariners are advised to navigate with caution in the area.

Chart temporarily affected - Aus 242

528(T)/2021 AUSTRALIA - QUEENSLAND - Brisbane River - South Brisbane Reach - Harbour works

Former Notice - 476(T)/2021 is cancelled

Maritime Safety Queensland Notice 397(T)/2020, 175(T)/2021, 202(T)/2021

Works associated with the construction of the Queens Wharf Brisbane are in progress on the northern shoreline between starboard lateral light buoys, *Fl.G.2-5s*, in positions 27° 28'.29 S 153° 01'.28 E and 27° 28'.66 S 153° 01'.53 E.

Construction of a bridge pier is in progress in position 27° 28'.48 S 153° 01'.35 E.

Flashing yellow lights will mark any hazards to navigation and piles when left unattended during phases of construction.

All vessels will display appropriate lights and shapes, and will monitor VHF Ch 12, Ch 13 and Ch 16.

Works at South Bank 1 (27° 28'.55 S 153° 01'.34 E) and South Bank 2 (27° 28'.57 S 153° 01'.35 E) Ferry Terminals are in progress. JUB 3 is in position 27° 28'.56 S 153° 01'.35 E and is marked by flashing yellow lights.

Mariners are advised to navigate with caution in the area.

Chart temporarily affected - Aus 238

562(T)/2021 AUSTRALIA - QUEENSLAND - Lucinda - Dungeness Bank - Light buoy

Maritime Safety Queensland Notice 225(T)/2021

The special light buoy, *Fl.Y.2s* (18° 30'.75 S 146° 19'.09 E), has been temporarily repositioned to 18° 31'.00 S 146° 19'.28 E.

The light buoy marks the current entrance to the channel.

Chart temporarily affected - Aus 267

600(T)/2021 AUSTRALIA - QUEENSLAND - Moreton Bay - Spitfire Channel - Obstruction

Maritime Safety Queensland Notice 257(T)/2021

An obstruction exists on the seabed in position 27° 03'.63 S 153° 17'.32 E.

Mariners are advised to navigate with caution in the area.

Chart temporarily affected - Aus 235 - Aus 236 - Aus 814 - Aus 815

639(T)/2021 AUSTRALIA - QUEENSLAND - Bowen - Port Denison - Light buoy off station

Maritime Safety Queensland Notice 260(T)/2021

The starboard lateral light buoy, *Fl.G.2.5s* (20° 01'.79 S 148° 16'.04 E), is off station.

Chart temporarily affected - Aus 268

642(T)/2021 AUSTRALIA - QUEENSLAND - Moreton Bay - Redland Bay - Scientific instrument

Maritime Safety Queensland Notice 256/2021

A special light buoy, *Fl.Y.2.5s*, exists in position 27° 36'.92 S 153° 18'.85 E.

Chart temporarily affected - Aus 236

697(T)/2021 AUSTRALIA - QUEENSLAND - Bowen - Port Denison - Light buoy unlit

Maritime Safety Queensland Notice 274(T)/2021

The port lateral light buoy, *Q.R* (20° 01'.36 S 148° 16'.80 E), is unlit.

Chart temporarily affected - Aus 268

698(T)/2021 AUSTRALIA - QUEENSLAND - Bowen - Wreck

Maritime Safety Queensland Notice 294(T)/2021

A wreck marked by a special light buoy, *Q.Y*, exists in position 20° 01'.33 S 148° 15'.56 E.

Mariners are advised to navigate with caution in the area.

Chart temporarily affected - Aus 268

700(T)/2021 AUSTRALIA - QUEENSLAND - Hay Point - Dredging operations

Maritime Safety Queensland Notices 293(T)/2021

Vessels *Pacific Tiger* and *Sounds Good* are conducting dredging operations at the DBCT berths (21° 14'.97 S 149° 18'.33 E).

Vessels will display appropriate lights and shapes and will monitor VHF Ch 10 and Ch 16.

Mariners are advised to navigate with caution in the area.

Chart temporarily affected - Aus 249 - Aus 250

703(T)/2021 AUSTRALIA - QUEENSLAND - Townsville - Harbour works

Maritime Safety Queensland Notice 278(T)/2020

Harbour works associated with the construction of a rock wall are in progress in an area bounded by the coastline and the following positions:

<i>Position</i>	<i>Remarks</i>
19° 14'.78 S 146° 50'.33 E	
19° 14'.57 S 146° 50'.47 E	special light buoy, <i>Fl.Y.2-5s</i>
19° 14'.62 S 146° 50'.61 E	

Uncharted rocks resulting from the works will present a hazard to navigation in the area.

Mariners are advised not to anchor within or navigate through the area.

Chart temporarily affected - Aus 256 - Aus 827

737(T)/2021 AUSTRALIA - QUEENSLAND - Cleveland Bay - Scientific instruments

Maritime Safety Queensland Notice 300(T)/2021

Special light buoys, *Fl.Y.2-5s*, exist in the following positions:

19° 02'.34 S 146° 36'.93 E
19° 06'.45 S 146° 32'.48 E
19° 07'.34 S 146° 52'.92 E
19° 09'.32 S 146° 52'.10 E
19° 11'.20 S 146° 50'.34 E
19° 11'.37 S 146° 49'.09 E
19° 11'.81 S 146° 49'.07 E
19° 12'.19 S 146° 59'.41 E
19° 12'.79 S 146° 47'.55 E.
19° 13'.58 S 146° 56'.98 E
19° 14'.05 S 146° 49'.50 E
19° 14'.80 S 146° 48'.90 E.

Chart temporarily affected - Aus 256 - Aus 827

738(T)/2021 AUSTRALIA - QUEENSLAND - Fitzroy River - Middle Channel - Scientific instrument

Maritime Safety Queensland Notice 31/2021

A special light buoy, *Q.Y.*, exists in position 23° 28'.23 S 150° 56'.37 E.

Chart temporarily affected - Aus 265

741(T)/2021 AUSTRALIA - QUEENSLAND - Fraser Island - Elbow Point - Shoaling

Navionics

Depths of less than 1m have been reported in an area bounded by the following positions:

25° 44'.40 S 152° 59'.29 E
25° 44'.71 S 152° 59'.37 E
25° 44'.89 S 153° 00'.30 E
25° 44'.66 S 153° 00'.38 E
25° 44'.40 S 152° 59'.77 E.

Mariners are advised to navigate with caution in the area.

Charts will be updated in due course.

Chart temporarily affected - Aus 817

744(T)/2021 AUSTRALIA - QUEENSLAND - Gladstone - Scientific instruments

Maritime Safety Queensland Notice 390(T)/2020

Special cylindrical light buoys, *Fl.Y.6s*, exist in the following positions:

23° 45'.53 S 151° 09'.49 E
23° 45'.92 S 151° 10'.87 E
23° 44'.71 S 151° 09'.62 E.

Chart temporarily affected - Aus 245

795(T)/2021 AUSTRALIA - TORRES STRAIT - Yorke Islands to Boigu Island - Scientific instruments
Maritime Safety Queensland Notice 330(T)/2021

Special light buoys, *Fl(5)Y.20s*, exist in the following positions:

9° 13'.27 S 142° 13'.24 E

9° 44'.85 S 143° 24'.09 E.

Chart temporarily affected - Aus 377 - Aus 840 - Aus 841

818(T)/2021 AUSTRALIA - QUEENSLAND - Bowen - Port Denison - Light buoy off station
Maritime Safety Queensland Notice 339(T)/2021

The starboard lateral light buoy, *Fl.G.3s M3* (20° 02'.78 S 148° 16'.26 E), is off station.

Chart temporarily affected - Aus 268

842(T)/2021 AUSTRALIA - QUEENSLAND - Great Sandy Strait - Light buoys

Former Notice - 754(T)/2021 is cancelled

Maritime Safety Queensland Notice 61(T)/2016, 146/2017, 145(T)/2021; 70/2020

Light buoys exist as follows:

<i>Number</i>	<i>Position</i>	<i>Characteristics</i>
S3	25° 12'.70 S 152° 54'.75 E	<i>Fl.G.2·5s</i>
NG1	25° 20'.20 S 153° 01'.40 E	<i>Fl.G.2·5s.</i>

Chart temporarily affected - Aus 817

843(T)/2021 AUSTRALIA - QUEENSLAND - Mermaid Beach - Scientific instrument

Former Notice - 598(T)/2021 is cancelled

Maritime Safety Queensland Notice 344(T)/2021

A special conical light buoy, *Fl(5)Y.20s*, exists in position 28° 02'.26 S 153° 27'.11 E.

Chart temporarily affected - Aus 814

889(T)/2021 AUSTRALIA - QUEENSLAND - Point Lookout - Light buoy repositioned eastwards

Maritime Safety Queensland Notice 372/2021

The special light buoy, *Fl(5)Y.20s* (27° 23'.04 S 153° 52'.63 E), has been temporarily repositioned to 27° 23'.56 S 153° 52'.68 E.

Chart temporarily affected - Aus 814

951(T)/2021 AUSTRALIA - CORAL SEA - Mellish Reef - Light buoy off station northeastwards

Former Notice - 847(T)/2021 is cancelled

Australian Bureau of Meteorology

The light buoy, *Fl.Y.2s* (15° 51'.0 S 158° 27'.6 E), is off station.

Chart temporarily affected - Aus 4604 (INT 604) - Aus 4634 (INT 634)

980(T)/2021 AUSTRALIA - QUEENSLAND - Fitzroy River - South Channel - Scientific instrument

Former Notice - 661(T)/2016 is cancelled

Maritime Safety Queensland Notice 400(T)/2021

A special light buoy, *Fl.Y.4s*, exists in position 23° 30'.23 S 150° 45'.83 E.

Chart temporarily affected - Aus 819

981(T)/2021 AUSTRALIA - QUEENSLAND - Hay Point - Exclusion zone

Maritime Safety Queensland Notice 398(T)/2021

An exclusion zone exists in an area bounded by the coast and the following positions:

21° 16'.40 S 149° 17'.85 E

21° 15'.96 S 149° 18'.67 E
21° 16'.25 S 149° 18'.86 E
21° 16'.16 S 149° 19'.02 E
21° 15'.91 S 149° 18'.86 E
21° 15'.69 S 149° 18'.83 E
21° 15'.34 S 149° 18'.61 E
21° 15'.59 S 149° 18'.14 E
21° 15'.83 S 149° 18'.29 E
21° 16'.25 S 149° 17'.51 E.

Only authorised vessels are permitted to enter.

Mariners are advised to navigate with caution in the area.

Chart temporarily affected - Aus 249 - Aus 250 - Aus 823

1025(T)/2021 AUSTRALIA - TORRES STRAIT - Great North East Channel - Coconut Island - Scientific instrument

Former Notice - 486(T)/2021 is cancelled

Maritime Safety Queensland Notice 427(T)/2021

A special light buoy, *Fl(5)Y.20s*, exists in position 10° 03'.18 S 143° 03'.12 E.

Chart temporarily affected - Aus 839

25(T)/2022 AUSTRALIA - QUEENSLAND - Magnetic Island - Cockle Bay - Scientific instrument

Maritime Safety Queensland Notice 456(T)/2021

A scientific instrument marked by a special light beacon, *Fl.Y.2.5s*, exists in position 19° 10'.15 S 146° 48'.55 E.

Chart temporarily affected - Aus 256 - Aus 827

26(T)/2022 AUSTRALIA - QUEENSLAND - Townsville - Obstruction; light buoy

Maritime Safety Queensland Notice 461(T)/2021

An obstruction marked by a special light buoy, *Fl.Y.2.5s*, exists in position 19° 14'.66 S 146° 49'.89 E.

Chart temporarily affected - Aus 256

27(P)/2022 AUSTRALIA - TORRES STRAIT - Boigu Island - Shoaling

Australian Institute of Marine Science

The drying area (9° 15'.51 S 142° 06'.09 E) extends 0.27M northwest to position 9° 15'.31 S 142° 05'.91 E.

The reef (9° 11'.96 S 142° 10'.56 E) extends 0.27M south to position 9° 12'.23 S 142° 10'.56 E.

Mariners are advised to navigate with caution in the area.

Charts will be updated in due course.

Chart which will be affected - Aus 841

28(P)/2022 AUSTRALIA - TORRES STRAIT - Prince of Wales Channel - Herald Patches - Shoaling

EGS Survey Pty Ltd

Latest survey indicates depths up to 1.5m shoaler than those charted may exist in areas bounded by the following positions:

10° 30'.40 S 142° 20'.26 E

10° 30'.96 S 142° 19'.80 E.

Mariners are advised to navigate with caution in the area.

Charts will be updated in due course.

Chart which will be affected - Aus 293 - Aus 700 - Aus 839 - Aus 841

62(T)/2022 AUSTRALIA - QUEENSLAND - Abbot Bay - Light buoys

Maritime Safety Queensland Notice 01(T)/2022

Light buoys exist as follows:

<i>Position</i>	<i>Characteristics</i>
19° 50'.60 S 148° 01'.00 E	<i>Fl.Y.4s</i>
19° 50'.50 S 148° 01'.25 E	<i>Fl.Y.4s.</i>

Chart temporarily affected - Aus 255 - Aus 826

64(T)/2022 AUSTRALIA - QUEENSLAND - Great Sandy Strait - Mary River - Wreck

Maritime Safety Queensland Notice 22(T)/2022

A wreck marked by a special light buoy, *Fl.Y.2·5s*, exists in position 25° 29'.547 S 152° 49'.670 E.

Mariners are advised to navigate with caution in the area.

Chart temporarily affected - Aus 817

65(T)/2022 AUSTRALIA - QUEENSLAND - Hay Point - Mornings

Maritime Safety Queensland Notice 003(T)/2022

Daytime mooring buoys exist in the following positions:

21° 17'.51 S 149° 18'.43 E
21° 17'.51 S 149° 18'.55 E
21° 17'.51 S 149° 18'.69 E
21° 17'.51 S 149° 18'.83 E
21° 17'.76 S 149° 18'.29 E
21° 17'.75 S 149° 18'.48 E
21° 17'.74 S 149° 18'.71 E
21° 17'.73 S 149° 18'.92 E

Chart temporarily affected - Aus 249 - Aus 250

68(T)/2022 AUSTRALIA - QUEENSLAND - Moreton Bay - Redland Bay - Light buoy

Maritime Safety Queensland Notice 13(T)/2022

An submerged wreck marked by a special light buoy, *Fl.Y.2·5s*, exists in position 27° 37'.77 S 153° 18'.95 E.

Mariners are advised to navigate with caution in the area.

Chart temporarily affected - Aus 236 - Aus 814

164(T)/2022 AUSTRALIA - QUEENSLAND - Moreton Bay - Rous Channel - Light beacon destroyed

Maritime Safety Queensland Notice 58(T)/2022

The light beacon, *Fl.G.2·5s No17* (27° 24'.16 S 153° 20'.44 E), has been destroyed.

Chart temporarily affected - Aus 236

165(T)/2022 AUSTRALIA - QUEENSLAND - Moreton Bay - North West Channel - Light beacon unlit

Maritime Safety Queensland Notice 61(T)/2022

The light beacon, *Fl.Y.2·5s NW2* (26° 49'.84 S 153° 08'.96 E), is unlit.

Chart temporarily affected - Aus 235

167(T)/2022 AUSTRALIA - QUEENSLAND - Moreton Bay - St Helena Island - Light beacon destroyed

Maritime Safety Queensland Notice 57(T)/2022

The north cardinal light beacon, *Q* (27° 22'.20 S 153° 14'.20 E), has been destroyed.

Chart temporarily affected - Aus 236

234(T)/2022 AUSTRALIA - QUEENSLAND - Brisbane River - Nav aids damaged; nav aids off station; nav aids destroyed

Maritime Safety Queensland Notice 112(T)/2022, 113(T)/2022, 111(T)/2022

Nav aids in the Brisbane River may be damaged, off station or destroyed due to a severe weather event.

Mariners are advised to navigate with caution in the area.

Chart temporarily affected - Aus 237 - Aus 238

235(T)/2022 AUSTRALIA - QUEENSLAND - Brisbane River - Town Reach - Harbour works

Maritime Safety Queensland Notice 63(T)/2022

Harbour works are in progress in an area north of the line 27° 28'.43 S 153° 01'.88 E to 27° 28'.43 S 153° 02'.05 E and south of line 27° 28'.16 S 153° 01'.85 E to 27° 28'.16 S 153° 02'.03 E.

Anchoring is not permitted in the works area. Access to moor and berth at shoreside infrastructure within the area is permitted.

Barges and support vessels are on site in the vicinity of position 27° 28'.28 S 153° 01'.96 E. Barges will be lit by special flashing lights.

Vessels will monitor VHF Ch 13.

Special light buoys, *Fl. Y. 4s*, exist in positions 27° 28'.17 S 153° 01'.96 E and 27° 28'.43 S 153° 02'.01 E.

Mariners are advised to navigate with caution in the area with minimal wash.

Chart temporarily affected - Aus 238

236(T)/2022 AUSTRALIA - QUEENSLAND - Bundaberg - Burnett River - Light buoy off station

Maritime Safety Queensland Notice 109(T)/2022

The starboard lateral light buoy, *Fl. G. 4s BR5* (24° 48'.78 S 152° 21'.77 E), is off station.

Chart temporarily affected - Aus 242

237(T)/2022 AUSTRALIA - QUEENSLAND - Cape Flattery - Scientific instrument

Maritime Safety Queensland Notice 125(T)/2022

A special spherical light buoy, *Fl(5) Y. 20s*, exists in position 14° 55'.63 S 145° 20'.65 E.

Chart temporarily affected - Aus 832

238(T)/2022 AUSTRALIA - QUEENSLAND - Hay Point - Light buoys

Maritime Safety Queensland Notice 118(T)/2022

Special light buoys, *Fl. Y. 3s*, exist in positions 21° 17'.46 S 149° 17'.88 E and 21° 17'.54 S 149° 17'.95 E.

Chart temporarily affected - Aus 250

239(T)/2022 AUSTRALIA - QUEENSLAND - Moreton Bay - Spitfire Channel - Buoy

Maritime Safety Queensland Notice 365(T)/2019, 116(T)/2022

A starboard lateral buoy exists in position 27° 02'.90 S 153° 16'.30 E.

Chart temporarily affected - Aus 235 - Aus 236

276(T)/2022 AUSTRALIA - QUEENSLAND - Brisbane River - Town Reach - Obstruction; light buoy

Maritime Safety Queensland Notice 128(T)/2022

An obstruction marked by a special light buoy, *Fl. Y. 2-5s*, exists in position 27° 28'.29 S 153° 02'.03 E.

Chart temporarily affected - Aus 238

277(T)/2022 AUSTRALIA - QUEENSLAND - Cairns - Trinity Inlet - Wreck
Maritime Safety Queensland Notice 156/2022

A wreck marked by a light, *Fl.Y.3s*, exists in position 16° 56'.70 S 145° 46'.98 E.

Mariners are advised to navigate with caution in the area.

Chart temporarily affected - Aus 262

281(T)/2022 AUSTRALIA - QUEENSLAND - Pumicestone Channel - Coastline inaccuracies; shoaling
Navionics

A major change to the coastline and depths has occurred in an area bounded by the following positions:

26° 49'.12 S 153° 07'.72 E

26° 49'.11 S 153° 08'.14 E

26° 49'.68 S 153° 08'.12 E

26° 49'.68 S 153° 07'.63 E.

Mariners are advised to navigate with caution in the area.

Chart temporarily affected - Aus 235 - Aus 815

316(T)/2022 AUSTRALIA - QUEENSLAND - Brisbane River - Bulimba Point - Wreck
Maritime Safety Queensland Notice 172(T)/2022

A wreck marked by a special light buoy, *Fl.Y.2-5s*, exists in position 27° 26'.43 S 153° 03'.28 E.

Mariners are advised to navigate with caution in the area.

Chart temporarily affected - Aus 238

323(T)/2022 AUSTRALIA - QUEENSLAND - Taylors Beach - Light buoy withdrawn; light buoy established
Maritime Safety Queensland Notice 158(T)/2022

The safe water light buoy, *Iso.2s* (18° 36'.90 S 146° 21'.55 E), has been temporarily withdrawn; a port lateral light buoy, *Fl.R.2-5s*, exists in situ.

Chart temporarily affected - Aus 827 - Aus 828

354(T)/2022 AUSTRALIA - QUEENSLAND - Brisbane River - Entrance Channel to South Brisbane Reach - Obstructions
Maritime Safety Queensland

Due to a severe weather event, submerged obstructions and unusual currents may exist in the Brisbane River from the Entrance Channel (27° 18'.62 S 153° 12'.55 E) to South Brisbane Reach (27° 28'.29 S 153° 01'.22 E).

Mariners are advised to navigate with caution in the area.

Chart temporarily affected - Aus 237 - Aus 238

358(T)/2022 AUSTRALIA - QUEENSLAND - Satellite Reef - Wreck
Maritime Safety Queensland

A semi submerged wreck exists in position 16° 29'.19 S 145° 40'.93 E.

Mariners are advised to navigate with caution in the area.

Chart temporarily affected - Aus 830

388(P)/2022 AUSTRALIA - QUEENSLAND - Bundaberg - Burnett River - Shoaling
Australian Hydrographic Office

Latest survey indicates shoaler depths than those charted may exist in the Burnett River between Long Reach and Millaquin Reach.

The most significant shoals are as follows:

<i>Position</i>	<i>Depth</i>
24° 49'.11 S 152° 22'.08 E	-0.1m
24° 49'.94 S 152° 22'.31 E	0.8m.

Mariners are advised to navigate with caution in the area.

Charts will be updated in due course.

Chart which will be affected - Aus 242

389(T)/2022 AUSTRALIA - QUEENSLAND - Great Sandy Strait - Tin Can Inlet - Wreck
Maritime Safety Queensland Notice 207(T)/2022

A stranded wreck marked by a special light buoy, *Fl.Y.2.5s*, exists in position 25° 54'.14 S 153° 01'.40 E.

Mariners are advised to navigate with caution in the area.

Chart temporarily affected - Aus 817

421(T)/2022 AUSTRALIA - QUEENSLAND - Moreton Bay - Fison Channel - Light beacon unlit
Maritime Safety Queensland Notice 234(T)/2022

The light beacon, *Q.Bu* (27° 31'.94 S 153° 17'.20 E), is unlit.

Chart temporarily affected - Aus 236

422(T)/2022 AUSTRALIA - QUEENSLAND - Palm Beach - Light buoy off station
Maritime Safety Queensland Notice 220(T)/2022

The special light buoy, *Fl.Y.5s* (28° 06'.34 S 153° 28'.42 E), is off station.

Chart temporarily affected - Aus 814

452(T)/2022 AUSTRALIA - QUEENSLAND - North Stradbroke Island - Wreck
Maritime Safety Queensland Notice 250/2022

A wreck exists in the vicinity of position 27° 29'.45 S 153° 46'.02 E.

Mariners are advised to navigate with caution in the area.

Chart temporarily affected - Aus 814

486(T)/2022 AUSTRALIA - QUEENSLAND - Abbot Point - Scientific instrument
Maritime Safety Queensland Notice 256(T)/2022

A special spherical light buoy, *Fl(5)Y.20s*, exists in position 19° 51'.59 S 148° 05'.63 E.

Chart temporarily affected - Aus 255

490(T)/2022 AUSTRALIA - QUEENSLAND - Gold Coast Seaway - Light buoy destroyed eastwards
Maritime Safety Queensland Notice 266/2022

The special light buoy, *Fl.Y.4s* (27° 54'.93 S 153° 27'.59 E), has been destroyed and has sunk in position.

Mariners are advised to navigate with caution in the area.

Chart temporarily affected - Aus 814

530(T)/2022 AUSTRALIA - QUEENSLAND - Gladstone - South Passage Island - Scientific instrument
Former Notice - 841(T)/2021 is cancelled
Vision Environment

A special light buoy, *Fl.Y.6s*, exists in position 23° 47'.05 S 151° 11'.14 E.

Chart temporarily affected - Aus 245

536(T)/2022 AUSTRALIA - QUEENSLAND - Yorkeys Knob - Lights altered

Maritime Safety Queensland Notice 287(T)/2022

The rear leading light, *Iso.Bu.2s* (16° 48'.09 S 145° 42'.93 E) has been temporarily altered to *Iso.2s*.

The front leading light, *Q.Bu* (16° 48'.04 S 145° 42'.97 E) has been temporarily altered to *Q*.

Chart temporarily affected - Aus 262 - Aus 830

566(T)/2022 AUSTRALIA - QUEENSLAND - Hay Point - Scientific instrument

Former Notice - 66(T)/2022 is cancelled

Maritime Safety Queensland Notice 300(T)/2022

A special light buoy, *Fl(5)Y.20s*, exists in position 21° 13'.62 S 149° 17'.82 E.

Chart temporarily affected - Aus 249 - Aus 250

570(T)/2022 AUSTRALIA - QUEENSLAND - Rosslyn Bay - Dredging operations

Maritime Safety Queensland Notice 318(T)/2022

The dredge *Saibai* and support vessels *Darnley* and *Barralodge* are conducting dredging operations in Rosslyn Bay Marina (23° 09'.52 S 150° 47'.23 E).

A floating and submerged pipeline marked by special light buoys, *Fl.Y.5s*, exists in the marina between the dredge and a discharge location in the vicinity of position 23° 09'.02 S 150° 47'.84 E.

Mariners are advised to navigate with caution in the area and to contact VHF Ch 16 when passing the dredge in tow or when the vessel is handling/connecting pipeline.

Chart temporarily affected - Aus 819 - Aus 820

572(T)/2022 AUSTRALIA - QUEENSLAND - Weipa - Obstruction; light buoy

Former Notice - 69(T)/2022 is cancelled

Maritime Safety Queensland Notice 315(T)/2022

An obstruction marked by a special light buoy, *F*, exists in position 12° 45'.60 S 141° 35'.30 E.

Mariners are advised to navigate with caution in the area.

Chart temporarily affected - Aus 4

574(T)/2022 AUSTRALIA - TORRES STRAIT - Horn Island - Wasaga - Wreck

Maritime Safety Queensland Notice 311(T)/2022

A wreck marked by a special light buoy, *Fl.Y.2-5s*, exists in position 10° 35'.38 S 142° 14'.66 E.

Mariners are advised to navigate with caution in the area.

Chart temporarily affected - Aus 299

610(T)/2022 AUSTRALIA - QUEENSLAND - Cairns - Scientific instruments

Maritime Safety Queensland Notice 336(T)/2022

Scientific instruments exist as follows:

<i>Position</i>	<i>Remarks</i>
16° 45'.90 S 145° 48'.66 E	subsurface scientific instrument marked by a white spherical buoy
16° 46'.38 S 145° 50'.76 E	subsurface scientific instrument marked by a white spherical buoy
16° 48'.30 S 145° 44'.46 E	special light buoy, <i>Fl.Y.2s</i>
16° 52'.14 S 145° 50'.70 E	special light buoy, <i>Fl.Y.2s</i>
16° 53'.46 S 145° 47'.70 E	special light buoy, <i>Fl.Y.2s</i>
16° 57'.90 S 145° 47'.76 E	special light buoy, <i>Fl.Y.2s</i> .

Chart temporarily affected - Aus 262 - Aus 830

611(T)/2022 AUSTRALIA - QUEENSLAND - Cairns - Dredging operations

Maritime Safety Queensland Notice 341(T)/2022

The dredge *Brisbane* and vessel *Pacific Titan* are conducting dredging and bed levelling operations in the Port of Cairns (16° 55'.0 S 145° 47'.0 E).

Vessels will display appropriate lights and shapes and will monitor VHF Ch 12 and Ch 16.

Mariners are advised to navigate with caution in the area.

Chart temporarily affected - Aus 262

668(T)/2022 AUSTRALIA - QUEENSLAND - Moreton Bay - Wellington Point - Dredging operations

Maritime Safety Queensland Notice 347(T)/2022

The dredge *Faucon* and the barge *GHT1* are conducting dredging operations in the vicinity of positions 27° 27'.79 S 153° 14'.99 E and 27° 27'.99 S 153° 14'.49 E.

The vessels will display appropriate lights and shapes and will monitor VHF Ch 13 and Ch 16.

Mariners are advised to navigate with caution in the area.

Chart temporarily affected - Aus 236

669(T)/2022 AUSTRALIA - QUEENSLAND - Moreton Bay - Macleay Island - Karragarra Island - Lamb Island - Harbour works

Former Notice - 357(T)/2022 is cancelled

Maritime Safety Queensland Notice 180(T)/2022, 354(T)/2022, 355(T)/2022

Harbour works associated with the upgrade of the ferry terminals are in progress at Macleay Island (27° 37'.90 S 153° 21'.92 E), Karragarra Island (27° 38'.10 S 153° 21'.82 E) and Lamb Island (27° 37'.87 S 153° 22'.35 E).

Barges and support vessels are on site.

Anchors and mooring buoys exist in the area and will be marked by lights, *Fl.Y.4s*.

Mariners are advised to navigate with caution in the area with minimal wash.

Chart temporarily affected - Aus 236

694(T)/2022 AUSTRALIA - QUEENSLAND - Cumberland Islands to Hydrographers Passage - Survey operations

Former Notice - 613(T)/2022 is cancelled

EGS Survey Pty Ltd

Vessel *Sea Ranger* is conducting survey operations between positions 21° 15'.80 S 149° 30'.90 E and 19° 44'.70 S 150° 22'.40 E.

Special light buoys, *Fl.Y.2s*, exist in the following positions:

21° 08'.84 S 149° 29'.31 E
20° 51'.37 S 149° 44'.15 E
20° 43'.41 S 150° 05'.60 E
20° 31'.37 S 150° 22'.72 E
20° 10'.54 S 150° 21'.08 E
19° 52'.27 S 150° 20'.65 E.

Tide gauges exist on the seabed in the following positions:

21° 15'.8 S 149° 30'.9 E
21° 02'.8 S 149° 33'.3 E
20° 57'.1 S 149° 43'.3 E
20° 48'.1 S 149° 49'.3 E
20° 46'.8 S 150° 01'.1 E
20° 38'.0 S 150° 05'.2 E
20° 37'.3 S 150° 17'.0 E
20° 32'.2 S 150° 26'.2 E

20° 24'.4 S 150° 18'.5 E
20° 17'.2 S 150° 27'.1 E
20° 13'.5 S 150° 13'.5 E
20° 03'.8 S 150° 16'.5 E
19° 56'.3 S 150° 16'.1 E
19° 44'.7 S 150° 22'.4 E
19° 55'.9 S 150° 25'.9 E.

Current meters exist on the seabed in the following positions:

20° 37'.6 S 150° 11'.7 E
20° 30'.0 S 150° 20'.0 E
20° 17'.4 S 150° 19'.0 E
20° 03'.8 S 150° 16'.5 E
19° 48'.1 S 150° 22'.2 E.

Mariners are advised to navigate with caution in the area. A 100m clearance of the light buoys is requested.

Chart temporarily affected - Aus 249 - Aus 251 - Aus 367 - Aus 821 - Aus 823 - Aus 824

695(T)/2022 AUSTRALIA - QUEENSLAND - Fitzalan Passage - Light buoy unlit

Maritime Safety Queensland Notice 388(T)/2022

The special light buoy, *Fl.Y.2-5s* (20° 18'.80 S 148° 56'.07 E), is unlit.

Chart temporarily affected - Aus 252 - Aus 253 - Aus 254

696(T)/2022 AUSTRALIA - QUEENSLAND - Halifax Bay - Light beacon unlit

Maritime Safety Queensland Notice 377(T)/2022

The light beacon, *Q(2)4s 5m* (19° 09'.23 S 146° 38'.20 E), is unlit; a special light buoy, *Fl.Y.2-5s*, exists in situ.

Chart temporarily affected - Aus 256 - Aus 827

700(T)/2022 AUSTRALIA - QUEENSLAND - Townsville - Shoaling; light buoys

Former Notice - 535(T)/2022 is cancelled

Maritime Safety Queensland Notice 376(T)/2022

Mariners are advised to pass north east of the following:

<i>Position</i>	<i>Remarks</i>
19° 14'.66 S 146° 49'.97 E	
19° 14'.61 S 146° 50'.01 E	special light buoy, <i>Fl.Y.2-5s WSM2</i>
19° 14'.55 S 146° 50'.02 E	special light buoy, <i>Fl.Y.2-5s WSM1</i>
19° 14'.49 S 146° 50'.00 E	light beacon, <i>Q.G P15</i> .

Mariners should navigate with caution in the area.

Chart temporarily affected - Aus 256

701(T)/2022 AUSTRALIA - QUEENSLAND - Townsville - Channel widening works; nav aids

Former Notice - 359(T)/2022 is cancelled

Maritime Safety Queensland Notice 122(T)/2021, 125(T)/2021, 368(T)/2022, 379/2022, 380/2022

Barge *PMG181* and support vessels are conducting works to widen the channel as part of the Townsville Port Expansion Project.

During the works, beacons may be removed and replaced by virtual AIS while new beacons are installed.

Mariners are advised to navigate with caution in the area.

Chart temporarily affected - Aus 256

NORTHERN TERRITORY

223(T)/2009 AUSTRALIA - TIMOR SEA - Sahul Banks - Navaid; racon non operational

Former Notice - 671(T)/2008 is cancelled

Modem Management Services

A lit riser turret mooring exists in position 10° 52'.50 S 126° 34'.19 E. The racon is non operational.

Chart temporarily affected - Aus 312 - Aus 4721 (INT 721)

211(T)/2021 AUSTRALIA - NORTHERN TERRITORY - Darwin - East Arm - Scientific instruments

Department of Infrastructure, Planning and Logistics NT Notice 21(T)/2019

Special light buoys, *Fl(5)20s*, exist in positions 12° 30'.22 S 130° 54'.24 E and 12° 30'.20 S 130° 54'.20 E.

Chart temporarily affected - Aus 26

215(T)/2021 AUSTRALIA - NORTHERN TERRITORY - Darwin Naval Base - Harbour works; exclusion zone

Department of Infrastructure, Planning and Logistics NT Notice 63/2020

Harbour works associated with wharf redevelopment are in progress in an area bounded by the coast and the following:

<i>Position</i>	<i>Remarks</i>
12° 27'.49 S 130° 49'.05 E	
12° 27'.52 S 130° 48'.98 E	special light buoy, <i>Fl.Y</i>
12° 27'.56 S 130° 48'.95 E	special light buoy, <i>Fl.Y</i>
12° 27'.61 S 130° 48'.92 E	special light buoy, <i>Fl.Y</i>
12° 27'.68 S 130° 48'.96 E	special light buoy, <i>Fl.Y</i>
12° 27'.85 S 130° 49'.25 E	special light buoy, <i>Fl.Y</i>
12° 27'.80 S 130° 49'.27 E	special light buoy, <i>Fl.Y</i>
12° 27'.76 S 130° 49'.30 E	special light buoy, <i>Fl.Y</i>
12° 27'.73 S 130° 49'.32 E.	

An exclusion zone exists in the area and only authorised vessels are permitted to enter.

Mariners are advised to keep well clear and to navigate with caution in the area.

Chart temporarily affected - Aus 25 - Aus 26

183(T)/2022 INDIAN OCEAN - Christmas Island - Mooring buoy off station

L Mioceovich

The mooring buoy (10° 25'.92 S 105° 39'.5 E) is off station and is currently in position 10° 26'.48 S 105° 39'.45 E.

Chart temporarily affected - Aus 920

501(T)/2022 AUSTRALIA - NORTHERN TERRITORY - Bass Reef - Obstruction

Department of Infrastructure, Planning and Logistics NT Coastal Notice 1(T)/2020

A ghost net has been reported in position 12° 27'.82 S 130° 19'.12 E.

Mariners are advised to navigate with caution in the area.

Chart temporarily affected - Aus 309 - Aus 316

537(T)/2022 AUSTRALIA - NORTHERN TERRITORY - Clarence Strait - Survey operations

Precision Hydrographic Services

Survey vessels *Outer Limit* and *Empress* are conducting survey operations in an area bounded by the following positions:

12° 03'.90 S 131° 15'.37 E
11° 58'.88 S 131° 12'.07 E
11° 56'.27 S 131° 12'.81 E
11° 32'.28 S 131° 40'.35 E
11° 50'.30 S 131° 36'.79 E
12° 00'.48 S 131° 24'.20 E

12° 01'.60 S 131° 18'.13 E.

Vessels will display appropriate lights and shapes.

Tide gauges marked by lit yellow mooring buoys, *Fl.Y.1-5s*, exist in the following positions:

11° 32'.2 S 131° 41'.4 E
11° 41'.6 S 131° 31'.3 E
11° 42'.4 S 131° 39'.1 E
11° 49'.6 S 131° 21'.2 E
11° 52'.2 S 131° 35'.0 E
11° 58'.3 S 131° 13'.1 E
11° 58'.8 S 131° 26'.6 E
12° 02'.8 S 131° 17'.0 E.

Mariners are advised to navigate with caution in the area.

Chart temporarily affected - Aus 20 - Aus 720 - Aus 721

575(T)/2022 AUSTRALIA - NORTHERN TERRITORY - Lynedoch Bank - Drill rig northwestwards
MODU *Valaris MS-1*

Drill rig *Valaris MS-1* is conducting drilling operations in position 9° 52'.12 S 130° 18'.12 E.

Chart temporarily affected - Aus 310

618(T)/2022 AUSTRALIA - NORTHERN TERRITORY - Darwin - Military exercise
Department of Defence

Mariners are advised that there will be an increase in Naval activity in the Port of Darwin from 11 to 24 September 2022 associated with Exercise KAKADU 2022.

The North Australia Exercise Area (NAXA) will be activated for military exercises including live firing in an area bounded by: 12° 49'.33 S 130° 46'.65 E, 15° 05'.73 S 129° 54'.35 E, thence the minor arc of a circle of 170NM radius centred on Darwin DME (12° 25'.40 S 130° 54'.38 E), to 11° 35'.80 S 128° 08'.38 E, 12° 18'.20 S 130° 29'.90 E, thence the minor arc of a circle of 25NM radius centred on Darwin DME, to 12° 49'.33 S 130° 46'.65 E and 12° 18'.88 S 131° 19'.05 E, thence the minor arc of a circle of 25NM radius centred on Darwin DME, to 12° 00'.28 S 130° 54'.88 E, 9° 54'.73 S 130° 52'.12 E, thence the minor arc of a circle of 150NM radius centred on Darwin DME, to 11° 41'.02 S 133° 20'.67 E, 12° 18'.88 S 131° 19'.05 E.

Vessels should expect that live firing will take place within the NAXA during the period of the exercise at any time.

Merchant traffic may be invited to alter course to facilitate naval training manoeuvres. Vessels transiting the area during the exercise period are advised to navigate with caution, monitor VHF Channel 16, and ensure their vessels Automatic Identification Systems (AIS) is activated. Temporary anchorages have been established in the vicinity of Talc Head. There will be an increase in traffic crossing between the temporary anchorages and Darwin Naval Base. Mariners are advised to navigate with additional caution. Maritime industry enquiries related to Exercise KAKADU should be directed to RAN Maritime Trade Operations via phone +61 (0) 431764980 or email MTO.OPSO@defence.gov.au.

Chart temporarily affected - Aus 18 - Aus 20 - Aus 26 - Aus 309 - Aus 310 - Aus 315 - Aus 316 - Aus 714 - Aus 719 - Aus 720 - Aus 721 - Aus 4721 (INT 721)

671(T)/2022 AUSTRALIA - NORTHERN TERRITORY - Shoal Bay - Survey operations
Northern Territory Government Notice 22(T)/2022

MV *Offshore Solution*, MV *Special Order* and support vessels are conducting survey operations between approximate positions 12° 16'.32 S 130° 29'.36 E and 12° 16'.15 S 131° 01'.52 E.

Mariners are advised to navigate with caution in the area.

Chart temporarily affected - Aus 25 - Aus 309 - Aus 316

702(T)/2022 AUSTRALIA - NORTHERN TERRITORY - Darwin - Middle Passage - Light buoy destroyed
Department of Infrastructure, Planning and Logistics NT Notice 44(T)/2022

The port lateral light buoy, *Iso.R.2s No4* (12° 21'.08 S 130° 43'.65 E), has been destroyed; only the yellow buoyancy chamber remains in position.

Mariners are advised to navigate with caution in the area.

Chart temporarily affected - Aus 25 - Aus 309

WESTERN AUSTRALIA

1078(P)/2015 AUSTRALIA - WESTERN AUSTRALIA - East Holothuria Reef - Shoaling HMAS Mermaid

Depths less than 6m have been reported in the vicinity of position 13° 33'.6 S 126° 10'.8 E.

Mariners are advised to navigate with caution in the area.

Chart which will be affected - Aus 318 - Aus 319 - Aus 727 - Aus 728

480(T)/2016 AUSTRALIA - WESTERN AUSTRALIA - Rankin Bank - Scientific instrument MetOcean Engineers

A subsurface scientific instrument exists 200m below the surface in position 19° 32'.00 S 115° 48'.01 E.

Chart temporarily affected - Aus 327

731(T)/2016 AUSTRALIA - WESTERN AUSTRALIA - Rankin Bank - Scientific instruments southwestwards *Former Notice - 701(T)/2015 is cancelled* A McCarthy , MetOcean Engineers

Subsurface scientific instruments exist 80m below the surface in the following positions:

19° 56'.34 S 115° 23'.38 E

19° 56'.46 S 115° 23'.29 E.

Chart temporarily affected - Aus 327 - Aus 328

991(T)/2018 AUSTRALIA - WESTERN AUSTRALIA - Montebello Islands - Ah Chong Island - Light unreliable Quadrant Energy

The light, *Mo(U)Y.15s* (20° 32'.86 S 115° 36'.27 E), is unreliable.

Chart temporarily affected - Aus 327 - Aus 742

291(T)/2019 AUSTRALIA - WESTERN AUSTRALIA - Barrow Island - Well abandonment works northwestwards Chevron Australia

Sixteen anchors and mooring lines have been installed around the well in position 20° 24'.49 S 114° 50'.95 E.

Mariners are advised to navigate with caution in the area.

Chart temporarily affected - Aus 328

1113(T)/2019 AUSTRALIA - WESTERN AUSTRALIA - Dampier - Pluto Channel - Light buoy established Pilbara Ports Authority Notice D15(T)/2019

A special pillar light buoy, *Fl.Y.3s P18*, with topmark exists in position 20° 35'.90 S 116° 45'.00 E.

Chart temporarily affected - Aus 59

1118(P)/2019 AUSTRALIA - WESTERN AUSTRALIA - Point D'Entrecasteaux to Point Nuyts - Shoaling LADS Flight

Latest survey shows shoaler depths than those charted may exist in an area bounded by the coast and the following positions:

34° 50'.71 S 116° 08'.52 E

35° 01'.54 S 116° 10'.54 E

35° 03'.52 S 116° 37'.62 E.

Mariners are advised to navigate with caution in the area.

Charts will be updated in due course.

Chart which will be affected - Aus 336

1165(T)/2019 AUSTRALIA - WESTERN AUSTRALIA - Garden Island - Beacon Head - Obstruction; light buoy
Fremantle Ports Notice 6(T)/2019, Department of Transport WA

An obstruction marked by a spherical isolated danger light buoy, *Fl(2)10s*, exists in position 32° 09'.16 S 115° 40'.65 E.

Chart temporarily affected - Aus 117

1273(T)/2019 AUSTRALIA - WESTERN AUSTRALIA - Dampier Archipelago - Roly Rock - Obstruction eastwards
TAMS

A length of cable exists on the seabed between the following positions:

20° 30'.09 S 116° 27'.99 E

20° 30'.66 S 116° 26'.38 E.

Chart temporarily affected - Aus 57 - Aus 327 - Aus 742

1280(P)/2019 AUSTRALIA - WESTERN AUSTRALIA - Houtman Abrolhos - North Island to Pelsaert Island - Shoaling
Fugro LADS

In and around the islands and reefs of Houtman Abrolhos, between North Island (28° 17'.90 S 113° 35'.80 E) and Pelsaert Island (28° 56'.11 S 113° 58'.09 E), latest survey shows the existence of numerous shoaler depths than those charted.

The most significant shoals are as follows:

<i>Position</i>	<i>Depth</i>
28° 31'.19 S 113° 42'.04 E	8.5m
28° 41'.12 S 113° 46'.57 E	9.6m
28° 41'.51 S 113° 50'.93 E	10.9m
28° 41'.90 S 113° 47'.09 E	5.0m
28° 42'.34 S 113° 51'.41 E	12.6m
28° 44'.33 S 113° 47'.60 E	7.6m
28° 44'.66 S 113° 47'.86 E	5.9m
28° 45'.22 S 113° 49'.21 E	18.4m
28° 45'.61 S 113° 48'.94 E	10.1m

Mariners are advised to navigate with caution in the area.

Charts will be updated in due course.

Chart which will be affected - Aus 332

1285(T)/2019 AUSTRALIA - WESTERN AUSTRALIA - Port Walcott - Outer North Channel - Tide gauge
Australian Maritime Safety Authority Auscoast Warning 288/2016

A tide gauge marked by a special light buoy, Q, exists in position 20° 24'.95 S 117° 23'.35 E.

Chart temporarily affected - Aus 55 - Aus 326

212(T)/2020 AUSTRALIA - WESTERN AUSTRALIA - Rottnest Island - Scientific instruments northwestwards
CSIRO

Subsurface scientific instruments exist as follows:

<i>Position</i>	<i>Depth below surface</i>
31° 38'.8 S 115° 11'.8 E	24m
31° 43'.7 S 115° 02'.5 E	23m
31° 45'.9 S 114° 57'.9 E	496m
31° 59'.0 S 115° 13'.7 E	180m
31° 59'.4 S 115° 23'.1 E	22m
32° 00'.0 S 115° 25'.0 E	46m

Chart temporarily affected - Aus 754

781(T)/2020 AUSTRALIA - WESTERN AUSTRALIA - Carnarvon - Scientific instrument

Department of Transport WA

A scientific instrument marked by a special light buoy, *Fl.Y.3s*, exists on the seabed in position 24° 54'.55 S 113° 37'.50 E.

Chart temporarily affected - Aus 73

933(T)/2020 AUSTRALIA - WESTERN AUSTRALIA - Rottnest Island - Scientific instrument

Curtin University

A lit scientific instrument, marked by a buoy, surfaces three times daily to transmit data in the vicinity of position 31° 58'.54 S 115° 23'.27 E.

Chart temporarily affected - Aus 754

1010(T)/2020 AUSTRALIA - WESTERN AUSTRALIA - Jurien Bay - Scientific instruments

Department of Transport WA Notice 81/2020

Scientific instruments, marked by special light buoys, *Fl.Y.3s*, exist in the following positions:

30° 16'.57 S 115° 02'.08 E

30° 16'.66 S 115° 02'.10 E

30° 18'.09 S 115° 01'.19 E

30° 18'.15 S 115° 00'.65 E

30° 17'.05 S 115° 02'.24 E.

Mariners are advised to navigate with caution in the area.

Chart temporarily affected - Aus 84 - Aus 753

399(T)/2021 AUSTRALIA - WESTERN AUSTRALIA - Fremantle - Hall Bank - Light beacon damaged

Fremantle Ports Notice 2(T)/2020

The port light beacon, *Fl.R.4s 7m 4M* (32° 01'.89 S 115° 42'.73 E), is damaged; a temporary light, *Oc.Y 3s 7m*, exists on the beacon.

Chart temporarily affected - Aus 112 - Aus 754

401(T)/2021 AUSTRALIA - WESTERN AUSTRALIA - Fremantle - Dredging operations

Fremantle Ports Notice 2/2018

The dredge *Modi-R* is conducting dredging operations in an area bounded by the following positions:

32° 08'.33 S 115° 42'.20 E

32° 08'.27 S 115° 42'.40 E

32° 03'.60 S 115° 41'.34 E

32° 03'.63 S 115° 41'.13 E.

Mariners are advised to navigate with caution in the area.

Chart temporarily affected - Aus 112 - Aus 117 - Aus 754

404(T)/2021 AUSTRALIA - WESTERN AUSTRALIA - Koolan Island - Mooring buoy

Trinacria Consulting

The mooring buoy (16° 09'.15 S 123° 45'.05 E) has sunk in position.

Chart temporarily affected - Aus 40 - Aus 41

449(T)/2021 AUSTRALIA - WESTERN AUSTRALIA - Browse Island - Subsea operations

McDermott Australia

Vessels *Normand Frontier*, *DLV 2000*, *LV108* and support vessels are conducting subsea operations in an area bounded by the following positions:

14° 00'.0 S 123° 05'.0 E

14° 00'.0 S 123° 20'.0 E

13° 44'.0 S 123° 20'.0 E

13° 44'.0 S 123° 05'.0 E.

Mariners are advised to navigate with caution in the area. 2.5M clearance requested.

Chart temporarily affected - Aus 319 - Aus 320 - Aus 322

540(T)/2021 AUSTRALIA - WESTERN AUSTRALIA - Port of Ashburton - Light buoy off station
Pilbara Ports Authority

The special light buoy, *Fl(5)Y.20s* (21° 32'.46 S 115° 01'.98 E), is off station and currently in position 21° 32'.23 S 115° 01'.58 E.

Chart temporarily affected - Aus 64 - Aus 743

647(T)/2021 AUSTRALIA - WESTERN AUSTRALIA - Ashburton Island - Scientific instrument northwards
Pilbara Ports Authority Notice A9(T)/2021

A subsurface scientific instrument, with a least depth of 11m, exists in position 21° 32'.43 S 114° 56'.01 E.

Chart temporarily affected - Aus 64 - Aus 328 - Aus 743 - Aus 744

653(T)/2021 AUSTRALIA - WESTERN AUSTRALIA - Onslow - Beadon Creek - Harbour works
Department of Transport WA Notice 90(T)/2021

Vessels *Margaret* and *Beadon Creek* are conducting wharf extension operations in the vicinity of position 21° 38'.68 S 115° 07'.86 E. Special light buoys, *Fl.Y*, have been established around the works.

All vessels will display appropriate lights and shapes, and will monitor VHF Ch 16.

Mariners are advised to navigate with caution in the area.

Chart temporarily affected - Aus 64

708(T)/2021 AUSTRALIA - WESTERN AUSTRALIA - Cape Bouvard - Scientific instruments
Department of Transport WA Notice 92/2021

Special light buoys, *Fl.Y.2.5s*, exist in the following positions:

32° 36'.60 S 115° 35'.76 E
32° 36'.84 S 115° 34'.98 E
32° 37'.50 S 115° 35'.58 E
32° 37'.74 S 115° 34'.80 E.

Chart temporarily affected - Aus 755

797(T)/2021 AUSTRALIA - WESTERN AUSTRALIA - Bedout Islet to Montebello Islands - Survey operations
Santos

On or about 15 September 2021, survey operations will be conducted in areas bounded by the following positions:

19° 54'.92 S 116° 20'.08 E
19° 59'.92 S 116° 20'.08 E
19° 59'.92 S 116° 15'.08 E
20° 04'.92 S 116° 15'.08 E
20° 04'.92 S 116° 25'.08 E
19° 54'.92 S 116° 25'.08 E;
and
19° 00'.46 S 118° 42'.42 E
19° 02'.35 S 118° 42'.43 E
19° 15'.00 S 118° 59'.36 E
19° 01'.93 S 119° 13'.62 E
18° 57'.84 S 119° 13'.56 E;
and
20° 18'.24 S 115° 49'.45 E
20° 23'.93 S 115° 40'.08 E
20° 24'.37 S 115° 40'.08 E
20° 28'.34 S 115° 42'.79 E
20° 22'.52 S 115° 52'.38 E.

Mariners are advised to navigate with caution in the area.

Chart temporarily affected - Aus 325 - Aus 326 - Aus 327 - Aus 742

800(T)/2021 AUSTRALIA - WESTERN AUSTRALIA - Geraldton - Dredging operations

Mid West Ports Notice 17/2021

The dredge *Modi R*, support vessel *Bhagwan Abrolhos* and survey vessel *Black Jack* are conducting dredging and survey operations in the entrance channel (28° 45'.46 S 114° 34'.16 E), harbour and berth pockets .

A 150m exclusion zone exists around the dredge vessels. The vessels will monitor VHF Ch 11 and Ch 16.

Mariners are advised to navigate with caution in the area.

Chart temporarily affected - Aus 81

987(P)/2021 AUSTRALIA - WESTERN AUSTRALIA - Bonaparte Archipelago - D'Arcole Islands to Augereau Island - Shoaling

European Space Agency

In and around the D'Arcole Islands (14° 54'.97 S 124° 44'.43 E) and Augereau Island (14° 45'.33 S 125° 07'.78 E) latest survey shows the existence of numerous shoaler depths than those charted.

The most significant shoals are as follows:

<i>Position</i>	<i>Depth</i>
14° 43'.71 S 125° 04'.91 E	6.7m
14° 44'.82 S 125° 05'.02 E	9.7m
14° 45'.05 S 125° 05'.55 E	8.9m
14° 49'.37 S 125° 07'.51 E	7.4m
14° 52'.96 S 124° 43'.51 E	1.0m
14° 54'.01 S 124° 44'.13 E	3.3m
14° 55'.03 S 124° 39'.57 E	1.8m
14° 56'.09 S 124° 43'.45 E	3.6m
14° 57'.10 S 124° 39'.44 E	1.2m
14° 57'.22 S 124° 46'.19 E	1.8m
14° 57'.83 S 124° 39'.85 E	0.9m
15° 00'.80 S 124° 37'.79 E	3.7m.

Mariners are advised to navigate with caution in the area.

Charts will be updated in due course.

Chart which will be affected - Aus 37 - Aus 320 - Aus 729 - Aus 730

991(T)/2021 AUSTRALIA - WESTERN AUSTRALIA - Port Hedland - Obstruction

Pilbara Ports Authority

An obstruction, with least depth 6.5m, exists in position 20° 14'.72 S 118° 37'.41 E.

Mariners are advised to navigate with caution in the area.

Chart temporarily affected - Aus 53 - Aus 326

1028(T)/2021 AUSTRALIA - WESTERN AUSTRALIA - Carnarvon - Harbour works

Former Notice - 650(T)/2021 is cancelled

Department of Transport WA Notice 12/2021, 152/2021

The dredge *FT3* and support vessels *Seahorse Quenda* and *Y2K* are conducting works associated with the removal of the jetty (24° 52'.74 S 113° 37'.28 E).

A 50m exclusion zone exists around the jetty.

Lit mooring buoys exist in positions 24° 52'.71 S 113° 36'.86 E and 24° 52'.78 S 113° 36'.80 E.

All vessels will display appropriate lights and shapes and will monitor VHF Ch 16 and 73.

Mariners are advised to navigate with caution in the area and keep well clear of the works.

Chart temporarily affected - Aus 73

1075(T)/2021 AUSTRALIA - WESTERN AUSTRALIA - Port of Ashburton - Scientific instrument
Pilbara Ports Authority Notice A14(T)/2021

A scientific instrument exists on the seabed in position 21° 40'.45 S 115° 01'.35 E.

Chart temporarily affected - Aus 64 - Aus 743

34(T)/2022 AUSTRALIA - WESTERN AUSTRALIA - Osborn Reefs - Wreck
MMA Offshore

A wreck, least depth 31m, exists in position 15° 09'.82 S 124° 13'.46 E.

Chart temporarily affected - Aus 320 - Aus 730

130(T)/2022 AUSTRALIA - WESTERN AUSTRALIA - Carnarvon - Fascine Waterway - Shoaling
Department of Transport WA

Significant shoaling exists in an area bounded by the following positions:

24° 54'.44 S 113° 38'.46 E

24° 54'.51 S 113° 38'.84 E

24° 53'.95 S 113° 38'.52 E

24° 53'.96 S 113° 38'.31 E.

Mariners are advised to navigate with caution in the area.

Chart temporarily affected - Aus 73

212(T)/2022 AUSTRALIA - WESTERN AUSTRALIA - King George Sound - Scientific instruments
Department of Transport WA Notice 255/2022

Special light buoys, *Fl.Y.4-5s*, exist in positions 35° 03'.20 S 118° 00'.91 E and 35° 05'.00 S 118° 00'.36 E.

Chart temporarily affected - Aus 118

214(T)/2022 AUSTRALIA - WESTERN AUSTRALIA - Ningaloo Reef - Scientific instrument
Department of Transport WA Notice 521/2022

A special light buoy, *Fl.Y.2-5s*, exists in position 23° 08'.58 S 113° 44'.24 E.

Chart temporarily affected - Aus 72 - Aus 746

287(T)/2022 AUSTRALIA - WESTERN AUSTRALIA - Bundegi Reef - Scientific instrument
Department of Transport WA Notice 792/2022

A special light buoy, *Fl.Y.2-5s*, exists in position 21° 52'.15 S 114° 12'.23 E.

Chart temporarily affected - Aus 328 - Aus 329 - Aus 744 - Aus 745

**334(T)/2022 AUSTRALIA - WESTERN AUSTRALIA - Muiron Islands - Well plug and abandonment works
northwestwards**

Woodside Energy Ltd

Drill rig *Valaris DPS-1* and support vessels *Normand Swan*, *Normand Tortuga* and *Siem Pilot* are conducting well plug and abandonment works in the following positions:

21° 28'.90 S 113° 59'.32 E

21° 27'.93 S 113° 59'.58 E

21° 29'.26 S 113° 58'.51 E

21° 30'.06 S 113° 57'.85 E.

Mariners are advised to navigate with caution in the area.

Chart temporarily affected - Aus 328 - Aus 329

364(T)/2022 AUSTRALIA - WESTERN AUSTRALIA - Dampier - Scientific instruments
Pilbara Ports Authority D03/2022(T)

Special light buoys, *Fl. Y. 1-5s*, exist in the following positions:

20° 40'.26 S 116° 39'.30 E
20° 38'.40 S 116° 44'.16 E
20° 37'.32 S 116° 44'.76 E
20° 32'.16 S 116° 46'.68 E
20° 28'.26 S 116° 47'.82 E
20° 31'.02 S 116° 38'.76 E
20° 28'.14 S 116° 42'.30 E
20° 30'.72 S 116° 47'.10 E
20° 22'.74 S 116° 47'.52 E.

Chart temporarily affected - Aus 57 - Aus 59 - Aus 327

366(T)/2022 AUSTRALIA - WESTERN AUSTRALIA - Dampier Archipelago - Scientific instruments northeastwards
O2 Marine

Scientific instruments exist on the seabed in positions 20° 17'.97 S 116° 53'.84 E and 20° 17'.89 S 116° 51'.58 E.

Mariners are advised to navigate with caution in the area

Chart temporarily affected - Aus 327

396(T)/2022 AUSTRALIA - WESTERN AUSTRALIA - Barrow Island - Drill rig northeastwards
MODU *Noble Tom Prosser*

Drill rig *Noble Tom Prosser* is conducting drilling operations in position 20° 36'.32 S 115° 37'.00 E.

Chart temporarily affected - Aus 327 - Aus 742

461(T)/2022 AUSTRALIA - WESTERN AUSTRALIA - Port Hedland - Scientific instruments
Former Notice - 427(T)/2022 is cancelled
Pilbara Ports Authority Notice PH4(T)/2022

Special light buoys, *Q. Y.*, exist as follows:

<i>Positions</i>	<i>Remarks</i>
20° 16'.79 S 118° 34'.86 E	130m exclusion zone exists around the buoy
20° 17'.11 S 118° 35'.51 E	130m exclusion zone exists around the buoy
20° 17'.25 S 118° 30'.88 E	125m exclusion zone exists around the buoy.

Mariners are advised to navigate with caution in the area.

Chart temporarily affected - Aus 53

507(T)/2022 AUSTRALIA - WESTERN AUSTRALIA - Browse Island - Drill rig northwestwards
Former Notice - 852(T)/2021 is cancelled
MODU *Maersk Deliverer*

Drill rig *Maersk Deliverer* is conducting drilling operations in position 13° 49'.47 S 123° 12'.80 E.

Chart temporarily affected - Aus 319 - Aus 320

509(T)/2022 AUSTRALIA - WESTERN AUSTRALIA - Trigg Island - Scientific instruments westwards
Former Notice - 498(T)/2020 is cancelled
Department of Transport WA Notice 66/2020

Special light buoys exist as follows:

<i>Position</i>	<i>Remarks</i>
31° 52'.70 S 115° 43'.11 E	Q(5)Y.20s
31° 52'.59 S 115° 43'.12 E	Q(5)Y.20s

31° 52'.53 S 115° 43'.32 E Fl. Y. 5s.

Chart temporarily affected - Aus 112

538(T)/2022 AUSTRALIA - WESTERN AUSTRALIA - Barrow Island - Subsea operations northwestwards

Former Notice - 504(T)/2022 is cancelled

Chevron Australia

On or about 20 July 2022, MV *Pride* and two ROVs will be conducting subsea operations in the vicinity of the following positions:

19° 51'.17 S 114° 30'.91 E

20° 24'.48 S 114° 50'.96 E

20° 34'.63 S 114° 46'.62 E.

Mariners are advised to navigate with caution in the area.

Chart temporarily affected - Aus 328

540(T)/2022 AUSTRALIA - WESTERN AUSTRALIA - Port Hedland - Scientific instruments

Atlas Iron

Scientific instruments marked by special spar light buoys, Q(5)Y.20s, exist in positions 20° 04'.78 S 118° 48'.32 E and 20° 03'.03 S 118° 42'.21 E.

Chart temporarily affected - Aus 325 - Aus 326

579(T)/2022 AUSTRALIA - WESTERN AUSTRALIA - Dampier Archipelago - Mooring buoy unlit northwards

Vermilion Oil and Gas Australia

The lit mooring buoy, Mo(U)Y.15s (20° 06'.95 S 116° 26'.11 E), is unlit.

Chart temporarily affected - Aus 327 - Aus 742

581(T)/2022 AUSTRALIA - WESTERN AUSTRALIA - Montebello Islands - Well plug and abandonment works northwestwards

Woodside Energy Ltd

Drill rig *Ocean Apex* and support vessels *Maersk Mover* and *Maersk Master* are conducting well plug and abandonment works in the vicinity of position 20° 04'.21 S 115° 11'.01 E.

Mariners are advised to navigate with caution in the area.

Chart temporarily affected - Aus 328 - Aus 742

583(T)/2022 AUSTRALIA - WESTERN AUSTRALIA - Port Hedland - Mooring buoys

Pilbara Ports Authority Notice 7(T)/2022

A lit orange cylindrical mooring buoy, Q, exists in position 20° 16'.40 S 118° 35'.29 E.

A lit orange cylindrical mooring buoy, VQ, exists in position 20° 16'.21 S 118° 35'.28 E.

Chart temporarily affected - Aus 53

585(T)/2022 AUSTRALIA - WESTERN AUSTRALIA - Warnbro Sound - Safety Bay - Shoaling

Department of Transport WA Notice 1897(T)/2022

Shoaling exists between the boat ramp (32° 18'.42 S 115° 43'.17 E) and the starboard lateral light buoy (32° 18'.69 S 115° 43'.11 E). The channel is almost completely obstructed by the encroaching sand bar.

Mariners are advised to navigate with caution in the area and should not rely solely on the light buoys for navigation through the channel.

Chart temporarily affected - Aus 116

623(T)/2022 AUSTRALIA - WESTERN AUSTRALIA - Bunbury - Koombana Bay - Harbour works

Department of Transport WA Notice 1852/2022

On or about 17 August 2022, works associated with the demolition and construction of the boat ramp in the vicinity of position 33° 18'.71 S 115° 38'.28 E will commence.

The works area will be marked by special light buoys.

The barge *TMC1* and support vessels will be conducting piling operations and unlit piles may exist in the area.

All vessels will display appropriate lights and shapes and will monitor VHF Ch 16.

The boat ramp will be closed for the duration of the works.

Mariners are advised to navigate with caution in the area.

Chart temporarily affected - Aus 115

624(T)/2022 AUSTRALIA - WESTERN AUSTRALIA - Cape Leeuwin - Light altered

Australian Maritime Safety Authority Auscoast Warning 232/2021

The light, *Fl.7.5s 56m 25M* (34° 22'.49 S 115° 08'.18 E), has been temporarily altered to *Fl.7.5s 56m 20M*.

Chart temporarily affected - Aus 116 - Aus 335 - Aus 336 - Aus 4070 (INT 70) - Aus 4708 (INT 708) - Aus 4709 (INT 709) - Aus 4710 (INT 710)

627(T)/2022 AUSTRALIA - WESTERN AUSTRALIA - North West Cape - Light unlit

Australian Maritime Safety Authority Auscoast Warning 126/2022

The light, *Fl.10s 129m 21M* (21° 48'.37 S 114° 09'.61 E), is unlit.

Chart temporarily affected - Aus 328 - Aus 329 - Aus 744 - Aus 745 - Aus 4708 (INT 708) - Aus 4723 (INT 723) - Aus 4725 (INT 725)

628(T)/2022 AUSTRALIA - WESTERN AUSTRALIA - Onslow - Light buoys unlit

Department of Transport WA Notice 1894(T)/2022

The lights buoys, *Fl.G.3s* (21° 33'.62 S 115° 04'.15 E) and *Fl.R.3s* (21° 33'.59 S 115° 04'.23 E), are unlit.

Chart temporarily affected - Aus 64 - Aus 743

703(T)/2022 AUSTRALIA - WESTERN AUSTRALIA - Dampier Archipelago - Drill rig northwestwards

Former Notice - 425(T)/2022 is cancelled

MODU *Valaris 107*

Drill rig *Valaris 107* is conducting drilling operations in position 20° 17'.40 S 116° 16'.52 E.

Chart temporarily affected - Aus 327 - Aus 742

704(T)/2022 AUSTRALIA - WESTERN AUSTRALIA - Dampier Archipelago - Drill rig northwestwards

MODU *Ocean Onyx*

Drill rig *Ocean Onyx* is moored in position 20° 24'.52 S 116° 08'.68 E.

Chart temporarily affected - Aus 327 - Aus 742

SOUTH AUSTRALIA

436(T)/2017 AUSTRALIA - SOUTH AUSTRALIA - Fleurieu Peninsula - Haycock Point - Hulk; prohibited area

Former Notice - 619(T)/2016 is cancelled

Department of Planning, Transport and Infrastructure SA Notices 37/2014, 8/2017

A lit hulk, *Fl. Y. 4s*, exists in position 35° 25'.23 S 138° 18'.33 E.

A prohibited area, marked by special buoys, exists in an area bounded by the following positions:

35° 25'.15 S 138° 18'.28 E

35° 25'.17 S 138° 18'.42 E

35° 25'.32 S 138° 18'.39 E

35° 25'.29 S 138° 18'.26 E.

Chart temporarily affected - Aus 485 - Aus 780

794(T)/2018 AUSTRALIA - SOUTH AUSTRALIA - Flinders Island - Point Malcolm - Light unlit

Department of Planning, Transport and Infrastructure SA Notice 28/2018

The light, *Fl(2) 10s 67m 11M* (33° 40'.90 S 134° 31'.59 E) is unlit.

Chart temporarily affected - Aus 342

506(T)/2019 AUSTRALIA - SOUTH AUSTRALIA - Lucky Bay - Harbour works

Former Notice - 1101(T)/2017 is cancelled

Department of Planning, Transport and Infrastructure SA

Works are in progress at Lucky Bay (33° 42'.45 S 137° 02'.18 E), and the area is closed with a temporary seawall.

Chart temporarily affected - Aus 777

733(T)/2019 AUSTRALIA - SOUTH AUSTRALIA - Lacedpede Bay - Wreck

Australian Maritime Safety Authority Auscoast 180/2019

A wreck exists in position 36° 26'.93 S 139° 40'.20 E.

Chart temporarily affected - Aus 347

723(T)/2020 AUSTRALIA - SOUTH AUSTRALIA - Investigator Strait to Gulf St Vincent - Tide gauges

Department for Infrastructure and Transport SA Notice 24(T)/2020

Tide gauges, 3m above the seabed, exist in the following positions:

34° 42'.09 S 138° 07'.34 E

34° 57'.48 S 138° 05'.75 E

35° 15'.30 S 138° 13'.00 E

35° 16'.79 S 137° 23'.74 E

35° 20'.50 S 137° 46'.80 E.

Mariners are advised to navigate with caution in the area and avoid anchoring or trawling.

Chart temporarily affected - Aus 485 - Aus 780 - Aus 781

884(T)/2020 AUSTRALIA - SOUTH AUSTRALIA - Glenelg - Shoaling; dredging operations

Department of Planning, Transport and Infrastructure SA Notice 26/2018

Shoaling exists in the entrance channel to Holdfast Shores (34° 58'.42 S 138° 30'.51 E).

Dredging operations are in progress in the area.

Mariners are advised to navigate with caution in the area.

Chart temporarily affected - Aus 781

886(T)/2020 AUSTRALIA - SOUTH AUSTRALIA - Wirrina Cove - Light beacon altered

Department of Planning, Transport and Infrastructure SA Notice 7/2019

The light beacon, *F.Bu* (35° 30'.07 S 138° 14'.35 E), has been temporarily altered to *F.Y.*

Chart temporarily affected - Aus 347 - Aus 780

934(T)/2020 AUSTRALIA - SOUTH AUSTRALIA - Lucky Bay - Dredging operations

Department for Infrastructure and Transport SA Notice 28/2020

Dredging operations are in progress in an area bounded by the following positions:

33° 42'.55 S 137° 02'.26 E

33° 42'.82 S 137° 02'.70 E

33° 42'.58 S 137° 02'.91 E

33° 42'.40 S 137° 02'.60 E.

A floating pipeline exists in the area.

The dredge will display appropriate lights and shapes.

Mariners are advised to navigate with caution in the area.

Chart temporarily affected - Aus 777

81(T)/2021 AUSTRALIA - SOUTH AUSTRALIA - Gulf St Vincent - Rogues Point - Artificial reef

Department of Planning, Transport and Infrastructure SA Notice 9/2017

An artificial reef is being developed in an area bounded by the following positions:

34° 30'.63 S 137° 53'.95 E

34° 30'.63 S 137° 54'.12 E

34° 30'.47 S 137° 54'.13 E

34° 30'.47 S 137° 53'.95 E.

A lit raft exists in position 34° 30'.59 S 137° 53'.99 E.

Chart temporarily affected - Aus 781

291(T)/2021 AUSTRALIA - SOUTH AUSTRALIA - Port Adelaide - Shoaling

Department for Transport, Energy and Infrastructure SA Notice 38/2007

Silting has resulted in width restrictions being imposed in the main channel of the Port Adelaide River between No 40 beacon (34° 47'.86 S 138° 30'.79 E) and No 41 beacon (34° 48'.52 S 138° 30'.77 E).

Mariners should avoid the western side of the main channel and navigate with caution in this part of the River as the available navigable channel is now only 90 metres wide measured from the eastern edge.

Mariners intending to transit this section should contact the Manager Marine Operations, Flinders Ports Pty Ltd on (08) 8447 0622 to confirm maximum widths.

Chart temporarily affected - Aus 130

492(P)/2021 AUSTRALIA - SOUTH AUSTRALIA - Masillon Island to Rocky Island - Islands out of position

Australian Hydrographic Office

The following islands are charted out of position:

	<i>Charted position</i>	<i>Actual position</i>
Masillon Island	32° 33'.57 S 133° 17'.46 E	32° 33'.82 S 133° 17'.30 E
Fenelon Island	32° 34'.80 S 133° 17'.18 E	32° 35'.08 S 133° 16'.94 E
Hart Island	32° 38'.49 S 133° 09'.40 E	32° 38'.68 S 133° 08'.26 E
Cannan Reefs	32° 38'.37 S 133° 14'.92 E	32° 38'.78 S 133° 14'.42 E
Rocky Island	34° 48'.71 S 134° 42'.93 E	34° 48'.71 S 134° 43'.45 E.

Mariners are advised to navigate with caution in the area.

Charts will updated in due course.

Chart which will be affected - Aus 341 - Aus 342 - Aus 343

613(T)/2021 AUSTRALIA - SOUTH AUSTRALIA - Thevenard - Yatala Channel - Harbour works
Department for Infrastructure and Transport SA Notice 16(T)/2021

Maintenance and construction activities are in progress on the Thevenard Jetty (32° 08'.95 S 133° 38'.48 E) and throughout the Yatala Channel (32° 11'.54 S 133° 35'.08 E)

All vessels will monitor VHF Ch 12.

Mariners are advised to navigate with caution in the area.

Chart temporarily affected - Aus 120 - Aus 341

719(T)/2021 AUSTRALIA - SOUTH AUSTRALIA - Port Lincoln - Scientific instruments
Department for Infrastructure and Transport SA Notice 22(T)/2021

Scientific instruments exist on the seabed as follows:

<i>Position</i>	<i>Remarks</i>
34° 44.29' S 135° 57.34' E	
34° 46.91' S 135° 53.52' E	
34° 43.06' S 135° 54.27' E	2 poly surface floats

Mariners are advised to navigate with caution in the area.

Chart temporarily affected - Aus 134 - Aus 776

803(T)/2021 AUSTRALIA - SOUTH AUSTRALIA - Gulf St Vincent - Investigator Straight to Adelaide - Scientific instruments

Former Notice - 771(T)/2021 is cancelled

Department for Infrastructure and Transport SA Notice 25(T)/2021

Special light buoys, *Fl.Y.2s*, exist in the following positions:

34° 51'.30 S 138° 21'.00 E
35° 01'.50 S 138° 27'.00 E.

An unlit special buoy exists in position 35° 34'.20 S 136° 55'.53 E.

Chart temporarily affected - Aus 130 - Aus 780 - Aus 781

587(T)/2022 AUSTRALIA - SOUTH AUSTRALIA - Wallaroo - Point Hughes - Harbour works
Department for Infrastructure and Transport SA Notice 18(T)/2022

Works associated with the construction of a new breakwater are in progress in the vicinity of position 33° 55'.88 S 137° 36'.29 E.

The works area is marked by special light buoys, *Fl.Y.4s*.

Mariners are advised to navigate with caution in the area.

Chart temporarily affected - Aus 777

674(P)/2022 AUSTRALIA - SOUTH AUSTRALIA - Kangaroo Island - Cape Gantheaume - Shoaling
Department for Environment and Water SA

Latest survey indicates shoaler depths than those charted may exist in an area bounded by the following positions:

36° 04'.60 S 137° 14'.33 E
36° 10'.46 S 137° 18'.29 E
36° 10'.48 S 137° 28'.99 E
36° 06'.90 S 137° 33'.76 E
36° 05'.49 S 137° 32'.95 E
36° 03'.40 S 137° 15'.00 E.

Mariners are advised to navigate with caution in the area.

Charts will be updated in due course.

Chart which will be affected - Aus 346 - Aus 485

675(T)/2022 AUSTRALIA - SOUTH AUSTRALIA - Kangaroo Island - Nepean Bay - Light beacon unlit
Department for Infrastructure and Transport SA Notice 22(T)/2022

The south cardinal light beacon, *Q(6)+LFl.15s 3M* (35° 40'.02 S 137° 41'.25 E), is unlit.

Chart temporarily affected - Aus 780

VICTORIA

379(T)/2018 AUSTRALIA - VICTORIA - Port Phillip - Williamstown - Light beacon unlit
Parks Victoria Notice 149(T)/2018

The special light beacon, *Fl.Y.3s* (37° 51'.84 S 144° 52'.08 E) is unlit.

Chart temporarily affected - Aus 143 - Aus 155

678(T)/2019 AUSTRALIA - VICTORIA - Port Fairy Bay - Scientific instrument
Former Notice - 844(T)/2018 is cancelled
Maritime Safety Victoria Notice 127(T)/2019

A special spherical light buoy, *Fl.Y.2.5s* exists in position 38° 22'.91 S 142° 17'.23 E.

Chart temporarily affected - Aus 141 - Aus 349

1231(T)/2019 AUSTRALIA - VICTORIA - Golden Beach - Scientific instrument
Former Notice - 571(T)/2019 is cancelled
Maritime Safety Victoria Notice 273(T)/2019

An orange conical light buoy, *Fl.4s*, exists in position 38° 15'.37 S 147° 25'.35 E.

Mariners are advised to navigate with caution in the area.

Chart temporarily affected - Aus 357

1292(T)/2019 AUSTRALIA - VICTORIA - Port Phillip - Sandringham - Light beacon unlit
Former Notice - 1170(T)/2019 is cancelled
Parks Victoria Notice 121(T)/2019, 285(T)/2019

The starboard lateral light beacon, *Fl(2)G.5s 5m 4M* (37° 56'.48 S 144° 59'.56 E), is unlit; a starboard lateral light buoy, *Fl(2)G.5s*, exists in position 37° 56'.51 S 144° 59'.53 E.

Chart temporarily affected - Aus 143 - Aus 155

42(T)/2020 AUSTRALIA - VICTORIA - Port Phillip - Brighton - Obstruction
Parks Victoria Notice 296(T)/2018

An obstruction marked by a buoy exists in position 37° 54'.44 S 144° 58'.95 E.

Chart temporarily affected - Aus 155

219(T)/2020 AUSTRALIA - VICTORIA - Portland Bay - Scientific instruments
Maritime Safety Victoria Notice 79(T)/2020

Subsurface scientific instruments exist 5m below the surface in the following positions:

38° 16'.05 S 141° 50'.82 E
38° 16'.10 S 141° 51'.17 E
38° 16'.14 S 141° 51'.56 E.

Chart temporarily affected - Aus 140 - Aus 349

328(T)/2020 AUSTRALIA - VICTORIA - Port Fairy - Light unreliable
Former Notice - 177(T)/2020 is cancelled
Maritime Safety Victoria

The light, *Fl(2)10s 12m 4M* (38° 23'.46 S 142° 15'.27 E), is unreliable.

Chart temporarily affected - Aus 141 - Aus 349

888(T)/2020 AUSTRALIA - VICTORIA - Cape Duquesne - Scientific instruments

Deakin University

Three special spherical light buoys, *Fl.Y.2-5s*, exist in the vicinity of 38°21'.70 S, 141°16'.53 E.

Mariners are advised to navigate with caution in the area.

Chart temporarily affected - Aus 348

895(P)/2020 AUSTRALIA - VICTORIA - Port Welshpool to McLoughlins Entrance - Shoaling
Gippsland Ports

Latest survey shows shoaling and channel realignment in the following channels:

Middle Ground Channel (38° 42'.5 S 146° 31'.5 E)

Snake Channel (38° 44'.4 S 146° 37'.0 E)

Midge Channel (38° 41'.8 S 146° 39'.9 E)

Port Albert Channel (38° 41'.5 S 146° 41'.2 E)

Kate Kearney Channel (38° 41'.7 S 146° 43'.0 E)

Kate Kearney Entrance (38° 41'.5 S 146° 45'.1 E)

Tarra Channel (38° 40'.8 S 146° 45'.7 E)

Boat Harbour Channel (38° 40'.4 S 146° 48'.4 E)

Pelican Channel (38° 39'.3 S 146° 48'.7 E)

Manns Beach Channel (38° 38'.8 S 146° 47'.4 E)

Manns Channel (38° 40'.5 S 146° 49'.6 E)

Oyster Bed Channel (38° 38'.5 S 146° 51'.2 E)

McLoughlins Entrance (38° 37'.8 S 146° 53'.0 E).

Mariners are advised to navigate with caution in the area.

Charts will be updated in due course.

Chart which will be affected - Aus 181

35(T)/2021 AUSTRALIA - VICTORIA - Port Phillip - Wyndham Marina - Light buoy off station
Parks Victoria Notice 357(T)/2020

The special light buoy, *Fl.Y.6s* (37° 57'.85 S 144° 42'.76 E), is off station.

Mariners are advised to navigate with caution in the area.

Chart temporarily affected - Aus 155

350(T)/2021 AUSTRALIA - VICTORIA - Port Phillip - Corio Bay - Scientific instruments
Victorian Regional Channels Authority Notice 93(T)/2021

Scientific instruments exist on the seabed in the following positions:

38° 05'.17 S 144° 23'.31 E

38° 05'.35 S 144° 24'.20 E.

Chart temporarily affected - Aus 153 - Aus 157

409(T)/2021 AUSTRALIA - VICTORIA - Port Phillip - Corio Bay - Scientific instrument
Victorian Regional Channels Authority Notice 310(T)/2019

A scientific instrument marked by a special light buoy, *Fl.Y*, exists on the seabed in position 38° 05'.07 S 144° 23'.25 E.

Chart temporarily affected - Aus 157

413(T)/2021 AUSTRALIA - VICTORIA - Port Phillip - Corio Bay - Light buoys; AIS
Victorian Regional Channels Authority Notices 16(T)/2018, 17(T)/2018, 72(T)/2018

Starboard lateral pillar light buoys exist as follows:

<i>Position</i>	<i>Remarks</i>
38° 06'.01 S 144° 22'.92 E	<i>F.Iso.G.3s TB2</i>
38° 06'.65 S 144° 22'.34 E	<i>F.Iso.G.3s TB1</i>

Starboard lateral virtual AIS also exist at the above positions.

Chart temporarily affected - Aus 157

416(T)/2021 AUSTRALIA - VICTORIA - Portland - Shoaling

Port of Portland Notice 56(T)/2021

Shoaling, with least depth 7.3m, extends 90m to the west of the main breakwater (38° 20'.65 S 141° 37'.40 E).

Mariners are advised to navigate with caution in the area.

Chart temporarily affected - Aus 140

493(T)/2021 AUSTRALIA - VICTORIA - Barwon Head - Light buoy withdrawn eastwards

Parks Victoria Notice 166(T)/2020

The special light buoy, *Fl. Y. 5s* (38° 17'.95 S 144° 32'.65 E), has been temporarily withdrawn.

Chart temporarily affected - Aus 143

500(T)/2021 AUSTRALIA - VICTORIA - Port Phillip - Martha Cove Harbour - Dredging operations

Parks Victoria Notice 28(T)/2021

Dredging operations are in progress in the entrance channel (38° 18'.37 S 144° 59'.56 E).

All hazards to navigation will display appropriate lights and shapes.

Mariners are advised to navigate with caution in the area.

Chart temporarily affected - Aus 143

508(T)/2021 AUSTRALIA - VICTORIA - Port Phillip - South Channel - Shoaling; virtual AIS

Victorian Ports Corporation (Melbourne) Notice 92(T)/2021

Shoaling, with least depth 12.6m, marked by an east cardinal virtual AIS exists in position 38° 19'.74 S 144° 54'.08 E.

Mariners are advised to navigate east of this position and navigate with caution in the area.

Chart temporarily affected - Aus 143

542(T)/2021 AUSTRALIA - VICTORIA - Port Phillip - Sandringham - Dredging operations

Parks Victoria Notice 143(T)/2021

Dredging operations are in progress in the vicinity of position 37° 58'.0 S 145° 00'.2 E.

A dredge and support vessels are on site.

The dredge material will be deposited for beach renourishment along Edward Street Beach (37° 57'.35 S 145° 00'.34 E) and in Half Moon Bay (37° 58'.13 S 145° 00'.64 E).

All hazards to navigation will be marked by appropriate lights and shapes.

Mariners are advised to navigate with caution in the area.

Chart temporarily affected - Aus 143 - Aus 155

578(T)/2021 AUSTRALIA - VICTORIA - Port Fairy - Light buoy off station

Maritime Safety Victoria Notice 164(T)/2021

The port lateral light buoy, *Fl. R. 5s* (38° 22'.99 S 142° 15'.29 E), is off station.

Chart temporarily affected - Aus 141

579(T)/2021 AUSTRALIA - VICTORIA - Port Phillip - Altona - Jetty

Parks Victoria Notice 168(T)/2021

The jetty has been damaged and a portion of the jetty has washed ashore and is in position 37° 52'.27 S 144° 49'.81 E.

Submerged or semi submerged hazards may exist in the area.

The jetty is closed to all vessels and mariners are advised to navigate with caution in the area.

Chart temporarily affected - Aus 143 - Aus 155

618(T)/2021 AUSTRALIA - VICTORIA - Port Phillip - Half Moon Bay - Obstructions

Parks Victoria Notices 215(T), 218(T)/2021

The jetty (37° 58'.09 S 145° 00'.58 E) has been demolished. Shoaling and obstructions may exist in the area north of the jetty.

Mariners are advised to navigate with caution in the area.

Chart temporarily affected - Aus 155

619(T)/2021 AUSTRALIA - VICTORIA - Seaspray - Platform unlit southwards

Australian Maritime Safety Authority Auscoast Warning 133/2021

The *Perch* platform, *Mo(U)15s* (38° 34'.13 S 147° 19'.35 E), is unlit.

Chart temporarily affected - Aus 357 - Aus 487 - Aus 4601 (INT 601) - Aus 4644 (INT 644)

664(T)/2021 AUSTRALIA - VICTORIA - Western Port - Stony Point to Sandy Point - Shoaling

Victorian Regional Channels Authority Notice 199/2019

Shoaling exists in the vicinity of the following positions:

<i>Position</i>	<i>Least depth</i>	<i>Remarks</i>
38°25'.5 S 145° 13'.8 E	13.6m	Extending up to 100m into shipping channel
38°22'.8 S 145° 14'.7 E	13.2m	Extending up to 50m into shipping channel
38°21'.9 S 145° 14'.4 E	13.5m	Extending up to 40m into shipping channel
38°22'.1 S 145° 14'.3 E	13.8m	Extending up to 10m into shipping channel

Mariners are advised to navigate with caution in the area.

Chart temporarily affected - Aus 151

665(T)/2021 AUSTRALIA - VICTORIA - Western Port - Hanns Inlet - Light beacons unlit

HMAS Cerberus

The light beacons, *Fl.G.8s* (38° 23'.26 S 145° 13'.95 E) and *Fl.R.8s* (38° 23'.30 S 145° 13'.94 E) are unlit.

Chart temporarily affected - Aus 151

773(T)/2021 AUSTRALIA - BASS STRAIT - Racon non operational

Australian Maritime Safety Authority Auscoast Warning 171/2021

The racon at the *Flounder A* platform (38° 18'.65 S 148° 26'.36 E) is non operational.

Chart temporarily affected - Aus 357 - Aus 487 - Aus 4644 (INT 644)

859(T)/2021 AUSTRALIA - VICTORIA - Western Port - Crib Point - Exclusion zone

Maritime Safety Victoria Notice 265(T)/2021

The Ex-HMAS OTAMA (Oberon class submarine) located 800 metres north of Crib Point jetty has been relocated to position 38° 20'.66 S 145° 13'.27 E, with a 200 metre exclusion zone.

A 200 metre exclusion zone remains at its previous location (38° 20'.48 S 145° 13'.45 E).

Mariners are advised to navigate with caution in the area.

Chart temporarily affected - Aus 151

963(T)/2021 AUSTRALIA - VICTORIA - Port Phillip - South Channel - Shoaling; virtual AIS
Ports Victoria Notice 298(T)/2021

Shoaling exists in the South Channel and is marked by a special virtual AIS as follows:

<i>Position</i>	<i>Remarks</i>
38° 18'.12 S 144° 44'.35 E	TB6
38° 18'.22 S 144° 44'.35 E	TB7.

Vessels with draught greater than 13.8m are advised to pass clear of TB6 and TB7.

Mariners are advised to navigate with caution in the area.

Chart temporarily affected - Aus 143 - Aus 144

995(P)/2021 AUSTRALIA - VICTORIA - Port Albert - Nav aids to be withdrawn
Gippsland Ports Notice 9(P)/2021

Nav aids in the channel between positions 38° 41'.04 S 146° 38'.02 E and 38° 39'.43 S 146° 39'.52 E will be withdrawn.

Eight new buoys will be established between positions 38° 41'.04 S 146° 38'.02 E and 38° 40'.17 S 146° 38'.70 E.

Chart which will be affected - Aus 181

1004(T)/2021 AUSTRALIA - VICTORIA - Port Phillip - Brighton - Light buoy unlit
Parks Victoria Notice 324(T)/2021

The special light buoy, *Fl(3)Y.10s R2* (37° 54'.55 S 144° 56'.33 E), is unlit.

Chart temporarily affected - Aus 155

1032(T)/2021 AUSTRALIA - VICTORIA - Port Phillip - Chelsea - Beacon destroyed
Parks Victoria Notice 333(T)/2021

The special beacon (38° 03'.47 S 145° 06'.74 E) has been destroyed.

Chart temporarily affected - Aus 143

1033(T)/2021 AUSTRALIA - VICTORIA - Port Phillip - Beaumaris Bay - Buoy
Parks Victoria Notice 353(T)/2021

A special buoy exists in position 37° 59'.50 S 145° 03'.56 E.

Chart temporarily affected - Aus 155

40(T)/2022 AUSTRALIA - VICTORIA - Port Phillip - Scientific instruments
Former Notice - 496(T)/2021 is cancelled
Victorian Ports Corporation (Melbourne) Notice 419(T)/2021

Special light buoys, *Fl.Y.2.5s*, exist in the following positions:

37° 58'.72 S 144° 59'.73 E
37° 59'.10 S 144° 46'.51 E
38° 03'.80 S 144° 52'.00 E
38° 08'.16 S 144° 45'.18 E
38° 09'.73 S 145° 03'.26 E
38° 18'.09 S 144° 52'.36 E.

Chart temporarily affected - Aus 143 - Aus 155 - Aus 157

81(T)/2022 AUSTRALIA - VICTORIA - Geelong - Survey
Ports Victoria Notice 025(T)/2022

The jack up barge *JUB II* and support vessel *Taurus (MB 209)* are conducting geotech operations in the vicinity of position 38° 05'.32 S 144° 23'.34 E.

All vessels will display appropriate lights and shapes and will monitor VHF Ch 12/16. A 100 m exclusion zone around barge is requested.

Mariners are advised to navigate with caution in the area.

Chart temporarily affected - Aus 157

86(T)/2022 AUSTRALIA - VICTORIA - Port Phillip - Light buoy off station

Parks Victoria Notice 401(T)/2021

The special light buoy, *Fl. Y. 5s* (38° 00'.78 S 145° 03'.60 E), is off station.

Chart temporarily affected - Aus 143 - Aus 155

88(T)/2022 AUSTRALIA - VICTORIA - Port Phillip - St Kilda - Shoaling

Parks Victoria NTM 027(T)/2022

Sand build up in position 37° 52'.30 S 144° 58'.39 E has reduced depths in the St Kilda marina entrance channel

Mariners are advised to navigate with caution in the area.

Chart temporarily affected - Aus 155

90(T)/2022 AUSTRALIA - VICTORIA - Western Port - Exclusion zone

Ports Victoria NTM 015-22

All unauthorised vessels within Port of Hastings waters are prohibited from entering within 100 metres of the vessel *SUI SO FRONTIER* during transit and while berthed.

Mariners are advised to navigate with caution in the area.

Chart temporarily affected - Aus 151 - Aus 801 - Aus 4709 (INT 709)

133(T)/2022 AUSTRALIA - VICTORIA - Port Phillip - Rye - Harbour works

Parks Victoria Notice 34(T)/2022

Works to upgrade the pier are in progress in the vicinity of position 38° 22'.03 S 144° 49'.36 E.

The pier will be closed for the duration of the works and only authorised vessels are permitted to enter the works area.

All vessels will display appropriate lights and shapes.

Mariners are advised to navigate with caution in the area.

Chart temporarily affected - Aus 143

294(T)/2022 AUSTRALIA - VICTORIA - Port Phillip - Point Wilson - Exclusion zone

Former Notice - 1078(T)/2021 is cancelled

Victorian Regional Channels Authority Notice 239/2020, Parks Victoria Notice 104/2022

A 300m exclusion zone exists outwards from the centreline of Point Wilson Pier (38° 05'.54 S 144° 31'.48 E). It is marked by special light buoys, *Is. 2s*, in the following positions:

38° 05'.51 S 144° 30'.73 E

38° 05'.68 S 144° 31'.32 E

38° 05'.84 S 144° 31'.86 E

38° 05'.89 S 144° 32'.45 E

38° 05'.64 S 144° 32'.48 E

38° 05'.55 S 144° 32'.04 E

38° 05'.38 S 144° 31'.47 E

38° 05'.20 S 144° 30'.93 E.

Only vessels involved in the remediation works are permitted to enter the area.

Mariners are advised to navigate with caution in the area.

Chart temporarily affected - Aus 143 - Aus 157

295(T)/2022 AUSTRALIA - VICTORIA - Port Phillip - Wyndham Marina - Light unlit
Parks Victoria Notice 102(T)/2022

The light, *WRG 3M* (37° 58'.15 S 144° 42'.52 E), is unlit.

Chart temporarily affected - Aus 143 - Aus 155

297(T)/2022 AUSTRALIA - VICTORIA - Seaspray - Platform unlit southeastwards
Australian Maritime Safety Authority Auscoast Warning 37/2022

The *Dolphin* platform, *Mo(U)15s* (38° 29'.24 S 147° 22'.65 E), is unlit.

Chart temporarily affected - Aus 357 - Aus 487 - Aus 4601 (INT 601) - Aus 4644 (INT 644)

371(T)/2022 AUSTRALIA - VICTORIA - Port Phillip - The Rip - Virtual AIS
Ports Victoria Notice 148(T)/2022

Virtual AIS exist in the following positions:

38° 17'.49 S 144° 39'.02 E

38° 17'.78 S 144° 38'.33 E

38° 18'.20 S 144° 38'.00 E.

Chart temporarily affected - Aus 144

588(T)/2022 AUSTRALIA - VICTORIA - Ninety Mile Beach - Traffic separation scheme southwestwards
Former Notice - 369(P)/2022 is cancelled
Australian Maritime Safety Authority

Decommissioning of oil and gas infrastructure will take place at Blackback Prod Well (38° 32'.42 S 148° 33'.24 E), Gudgeon Well (38° 30'.82 S 148° 28'.17 E) and Terakihi Well (38° 30'.27 S 148° 32'.89 E).

New temporary shipping fairways and a separation zone have been established to keep transiting ships away from decommissioning activities. The new shipping fairways and separation zone are bound by the following positions:

Northeast bound lane	38° 36'.941 S	148° 45'.842 E
	38° 39'.507 S	148° 48'.047 E
	38° 44'.600 S	148° 23'.000 E
	38° 42'.034 S	148° 20'.795 E.
Southwest bound lane	38° 33'.407 S	148° 42'.545 E
	38° 35'.750 S	148° 44'.746 E
	38° 40'.844 S	148° 19'.699 E
	38° 38'.500 S	148° 17'.500 E.
Separation zone	38° 35'.750 S	148° 44'.746 E
	38° 36'.941 S	148° 45'.842 E
	38° 42'.034 S	148° 20'.795 E
	38° 40'.844 S	148° 19'.699 E.

The fairways and separation zone come into effect on 1 August 2022 at 0000 UTC and will remain in place until further notice.

Mariners should follow the appropriate traffic lane and navigate in the general direction of traffic flow for that lane. They should, as far as practicable, keep clear of the separation zone.

Due to an increased risk of collision, particularly with vessels that may be restricted in their ability to manoeuvre, mariners should keep a good look out and take early action to avoid collisions.

Note: For e-notice users, please see full edition for map.

IMO-adopted Traffic Separation Scheme (TSS)
Bass Strait, Victoria, and temporary shipping fairway proposal

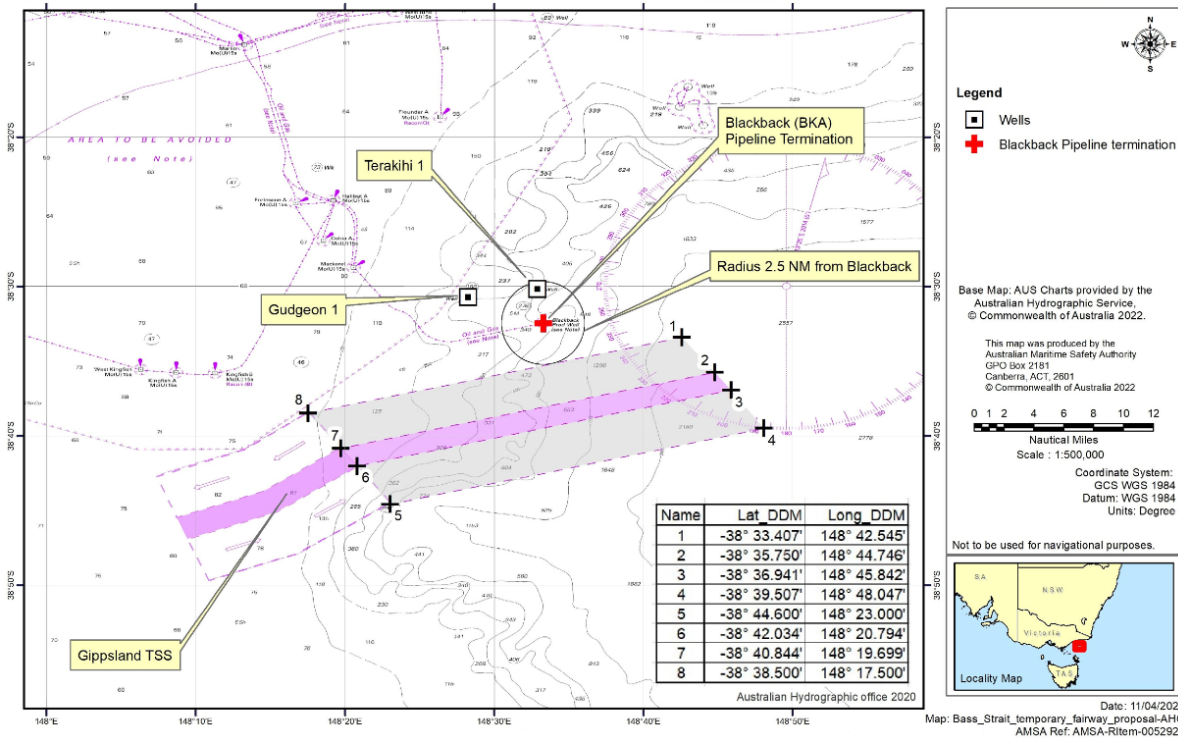


Chart temporarily affected - Aus 357 - Aus 487 - Aus 4644 (INT 644)

630(T)/2022 AUSTRALIA - VICTORIA - Cape Duquesne - Scientific instruments
Maritime Safety Victoria Notice 165(T)/2019

Scientific instruments exist as follows:

Position	Remarks
38° 24'.52 S 141° 16'.26 E	25m below surface
38° 24'.24 S 141° 17'.48 E	84m below surface
38° 24'.10 S 141° 18'.04 E	76m below surface
38° 23'.97 S 141° 18'.60 E	69m below surface
38° 23'.83 S 141° 19'.16 E	70m below surface
38° 23'.69 S 141° 19'.73 E	67m below surface
38° 23'.56 S 141° 20'.25 E	67m below surface
38° 23'.44 S 141° 20'.73 E	61m below surface
38° 23'.34 S 141° 21'.18 E	50m below surface
38° 23'.24 S 141° 21'.57 E	30m below surface
38° 23'.15 S 141° 21'.91 E	18m below surface.

Chart temporarily affected - Aus 140 - Aus 348 - Aus 349

637(T)/2022 AUSTRALIA - VICTORIA - Port Phillip - Mornington - Light beacon removed
Former Notice - 590(T)/2022 is cancelled
Parks Victoria Notice 427(T)/2021, 268/2022

The west cardinal light beacon, VQ(9)10s (38° 13'.42 S 145° 01'.58 E), has been removed; a west cardinal light buoy, VQ(9)10s, exists in situ.

Chart temporarily affected - Aus 143

638(T)/2022 AUSTRALIA - VICTORIA - Port Phillip - Chelsea - Buoy off station westwards
Parks Victoria Notice 263(T)/2022

The special buoy, No2 (38° 03'.07 S 145° 04'.52 E), is off station.

Chart temporarily affected - Aus 143 - Aus 155

639(T)/2022 AUSTRALIA - VICTORIA - Port Phillip - South Channel - Shoaling; virtual AIS

Former Notice - 658(T)/2021 is cancelled

Victorian Ports Corporation (Melbourne) Notice 265(T)/2022

Shoaling exists in the South Channel and is marked by a special virtual AIS as follows:

<i>Position</i>	<i>Remarks</i>
38° 17'.72 S 144° 41'.54 E	TB3
38° 18'.02 S 144° 43'.08 E	TB4.

Vessels with draught greater than 13.5m are advised to navigate north of TB3 and either north or south of TB4.

Mariners are advised to navigate with caution in the area.

Chart temporarily affected - Aus 143 - Aus 144 - Aus 788

705(T)/2022 AUSTRALIA - VICTORIA - Port Phillip - Capel Sound - Buoy off station

Parks Victoria Notice 258(T)/2022

The special buoy (38° 21'.35 S 144° 52'.88 E) is off station.

Chart temporarily affected - Aus 143

TASMANIA

627(T)/2016 AUSTRALIA - TASMANIA - Pipe Clay Head to Pitt Water - Scientific instruments

Former Notice - 309(T)/2014 is cancelled

University of Tasmania

Subsurface scientific instruments exist in the following positions:

42° 48'.25 S 147° 29'.91 E
42° 48'.29 S 147° 31'.42 E
42° 48'.43 S 147° 30'.02 E
42° 49'.18 S 147° 34'.71 E
42° 50'.70 S 147° 33'.57 E
42° 50'.74 S 147° 35'.11 E
42° 50'.90 S 147° 36'.91 E
42° 51'.05 S 147° 32'.08 E
42° 51'.33 S 147° 35'.89 E
42° 51'.69 S 147° 34'.85 E
42° 51'.82 S 147° 30'.92 E
42° 51'.82 S 147° 33'.36 E
42° 52'.35 S 147° 32'.10 E
42° 52'.70 S 147° 36'.29 E
42° 52'.94 S 147° 34'.16 E
42° 53'.24 S 147° 31'.16 E
42° 53'.79 S 147° 32'.67 E
42° 53'.88 S 147° 37'.33 E
42° 54'.20 S 147° 35'.44 E
42° 54'.37 S 147° 30'.53 E
42° 54'.47 S 147° 40'.80 E
42° 54'.67 S 147° 33'.87 E
42° 54'.92 S 147° 40'.78 E
42° 55'.13 S 147° 31'.80 E
42° 55'.36 S 147° 40'.76 E
42° 55'.81 S 147° 40'.74 E
42° 56'.99 S 147° 39'.68 E
42° 57'.04 S 147° 38'.01 E
42° 57'.15 S 147° 39'.22 E
42° 57'.15 S 147° 37'.41 E
42° 57'.28 S 147° 36'.79 E
42° 57'.40 S 147° 36'.20 E
42° 57'.51 S 147° 35'.59 E
42° 57'.62 S 147° 34'.99 E
42° 57'.73 S 147° 34'.44 E
42° 57'.86 S 147° 33'.85 E
42° 57'.96 S 147° 33'.30 E.

Chart temporarily affected - Aus 171 - Aus 796

263(T)/2018 AUSTRALIA - TASMANIA - Devonport - Shoaling

HydroSurvey Australia

Shoaling exists in the Mersey River between positions 41° 11'.20 S 146° 21'.98 E and 41° 11'.48 S 146° 22'.10 E.

Mariners are advised to navigate with caution in the area.

Chart temporarily affected - Aus 164

183(P)/2020 AUSTRALIA - TASMANIA - North West Bay - Barretta - Infrastructure

A Boon

The marina pontoons have been extended to seaward (43° 02'.95 S 147° 16'.14 E).

Mariners are advised to navigate with caution in the area.

Charts will updated in due course.

Chart which will be affected - Aus 171 - Aus 174

522(T)/2020 AUSTRALIA - TASMANIA - D'Entrecasteaux Channel - Tower Bay - Harbour works; light buoys
Marine and Safety Tasmania Notice M98/2020

Mooring works are in progress, marked by special light buoys as follows:

<i>Position</i>	<i>Remarks</i>
43° 23'.38 S 147° 02'.34 E	<i>Fl. Y. 4s</i>
43° 23'.46 S 147° 02'.27 E	<i>Fl. Y. 4s</i>
43° 23'.36 S 147° 01'.98 E	
43° 23'.28 S 147° 02'.05 E	

Chart temporarily affected - Aus 173

682(P)/2020 AUSTRALIA - TASMANIA - Franklin Sound - Shoaling
EOMAP

Latest survey shows shoaler depths than those charted may exist in an area bounded by the following positions:

40° 20'.41 S 148° 23'.65 E
40° 13'.57 S 148° 27'.46 E
40° 10'.81 S 148° 23'.17 E
40° 11'.66 S 148° 16'.60 E
40° 14'.42 S 148° 01'.81 E
40° 23'.48 S 147° 59'.63 E.

Mariners are advised to navigate with caution in the area.

Charts will be updated in due course.

Chart which will be affected - Aus 179 - Aus 798 - Aus 800

733(T)/2020 AUSTRALIA - TASMANIA - Burnie - Harbour works

Former Notice - 47(T)/2019 is cancelled

Marine and Safety Tasmania Notice M217/2018, Toll Group

Harbour works associated with the extension of the wharf at berth 5 (41° 03'.04 S 145° 54'.70 E) are in progress.

Mariners are advised to navigate with caution in the area.

Chart temporarily affected - Aus 163

1017(T)/2020 AUSTRALIA - TASMANIA - Pitt Water - Wreck

Marine and Safety Tasmania Notice M213/2020

A wreck marked by a special spar buoy exists in position 42° 50'.19 S 147° 36'.58 E.

Mariners are advised to navigate with caution in the area.

Chart temporarily affected - Aus 796

177(T)/2021 AUSTRALIA - TASMANIA - King Island - Grassy Harbour - Platform, submarine cable, prohibited area

Marine and Safety Tasmania Notice M19/2021

A lit platform, *F*, exists in position 40° 03'.97 S 144° 03'.53 E.

A submarine power cable exists between positions 40° 03'.97 S 144° 03'.53 E and 40° 03'.91 S 144° 03'.53 E.

An entry prohibited area, with radius 125m, exists centred on position 40° 03'.97 S 144° 03'.53 E.

Mariners are advised to navigate with caution in the area.

Chart temporarily affected - Aus 178

266(T)/2021 AUSTRALIA - TASMANIA - Burnie - Scientific instrument northeastwards

Marine and Safety Tasmania Notice M67/2021

A special light buoy, *Fl. Y*, exists in position 41° 01'.32 S 146° 05'.36 E.

Chart temporarily affected - Aus 799

510(T)/2021 AUSTRALIA - TASMANIA - Burnie - Scientific instrument northeastwards
Marine and Safety Tasmania Notice M138/2021

A special light buoy, *Fl.Y*, exists in position 41° 01'.36 S 146° 05'.38 E.

Chart temporarily affected - Aus 799

673(T)/2021 AUSTRALIA - TASMANIA - Maria Island - Scientific instruments
Marine and Safety Tasmania

Subsurface scientific instruments exist on the seabed in the following positions:

42° 40'.08 S 147° 58'.04 E
42° 39'.99 S 147° 58'.60 E
42° 39'.91 S 147° 59'.16 E
42° 39'.82 S 147° 59'.72 E
42° 39'.74 S 148° 00'.28 E
42° 39'.08 S 148° 10'.40 E
42° 39'.28 S 148° 10'.92 E
42° 39'.48 S 148° 11'.44 E
42° 39'.68 S 148° 11'.96 E
42° 39'.88 S 148° 12'.49 E
42° 40'.08 S 148° 13'.01 E
42° 40'.28 S 148° 13'.53 E
42° 40'.48 S 148° 14'.05 E
42° 40'.68 S 148° 14'.57 E
42° 40'.88 S 148° 15'.10 E
42° 41'.08 S 148° 15'.62 E
42° 41'.28 S 148° 16'.14 E
42° 41'.48 S 148° 16'.66 E
42° 41'.68 S 148° 17'.18 E
42° 41'.88 S 148° 17'.71 E
42° 42'.08 S 148° 18'.23 E
42° 42'.28 S 148° 18'.75 E
42° 42'.48 S 148° 19'.27 E
42° 42'.68 S 148° 19'.79 E
42° 42'.87 S 148° 20'.32 E
42° 43'.07 S 148° 20'.84 E
42° 43'.26 S 148° 21'.26 E.

Chart temporarily affected - Aus 766 - Aus 797

677(T)/2021 AUSTRALIA - TASMANIA - North West Bay - Mooring area
Marine and Safety Tasmania Notice M106/2021

A mooring area, marked by special light buoys, exists in an area bounded by the following positions:

43° 02'.75 S 147° 17'.91 E
43° 02'.66 S 147° 18'.04 E
43° 02'.74 S 147° 18'.15 E
43° 02'.82 S 147° 18'.00 E.

Mariners are advised to navigate with caution in the area.

Chart temporarily affected - Aus 171

722(T)/2021 AUSTRALIA - TASMANIA - Port Dalrymple - Bell Bay - Harbour works
Marine and Safety Tasmania Notice M207/2021

Remediation works are in progress at Bell Bay Berth 6 (41° 08'.39 S 146° 51'.14 E).

Mariners are advised to navigate with caution in the area.

Chart temporarily affected - Aus 167

861(T)/2021 AUSTRALIA - TASMANIA - Devonport - Wreck
Tasmanian Ports Corporation

A wreck, least depth 9.3m exists in position 41° 10'.03 S 146° 22'.07 E.

Mariners are advised to navigate with caution in the area.

Chart temporarily affected - Aus 164

43(T)/2022 AUSTRALIA - TASMANIA - Frederick Henry Bay - Susan Bay - Wreck
Former Notice - 130(T)/2021 is cancelled
Marine and Safety Tasmania Notice M337/2021

A stranded wreck exists in position 42° 53'.70 S 147° 41'.40 E.

Mariners are advised to navigate with caution in the area.

Chart temporarily affected - Aus 171

93(T)/2022 AUSTRALIA - TASMANIA - Perkins Island to Rocky Cape - Scientific instruments
Former Notice - 45(T)/2022 is cancelled
Marine and Safety Tasmania Notice M354(T)/2021

Scientific instruments, 5m below the surface, exist in the following positions:

40° 44'.04 S 145° 09'.79 E
40° 45'.80 S 145° 13'.15 E
40° 48'.18 S 145° 18'.94 E
40° 50'.58 S 145° 26'.32 E.

Chart temporarily affected - Aus 790 - Aus 799 - Aus 4709 (INT 709)

135(T)/2022 AUSTRALIA - TASMANIA - Devonport - Mersey River - Exclusion zone
Marine and Safety Tasmania Notice M53(T)/2022

An exclusion zone exists in an area bounded by the coast and the following positions:

41° 11'.24 S 146° 21'.82 E
41° 11'.23 S 146° 21'.89 E
41° 10'.99 S 146° 21'.82 E
41° 10'.99 S 146° 21'.78 E.

Only authorised vessels are permitted to enter.

Mariners are advised to navigate with caution in the area.

Chart temporarily affected - Aus 164

249(T)/2022 AUSTRALIA - TASMANIA - Rocky Cape - Scientific instruments northeastwards
Marine and Safety Tasmania Notice M105(T)/2022

Special light buoys, *Fl.Y.3s*, exist in the following positions:

40° 28'.32 S 145° 28'.01 E
40° 33'.08 S 145° 31'.42 E
40° 38'.43 S 145° 35'.41 E
40° 42'.82 S 145° 38'.62 E
40° 47'.50 S 145° 42'.16 E.

Chart temporarily affected - Aus 487 - Aus 790 - Aus 799

302(P)/2022 AUSTRALIA - TASMANIA - Stanley Harbour - Shoaling
Veris

Latest survey indicates shoaler depths than those charted may exist in an area bounded by the following positions:

40° 46'.03 S 145° 18'.78 E
40° 46'.33 S 145° 18'.67 E
40° 46'.22 S 145° 18'.28 E.

The most significant shoals are as follows:

<i>Position</i>	<i>Depth</i>
40° 46'.19 S 145° 18'.20 E	4.3m
40° 46'.27 S 145° 18'.16 E	4.8m.

Mariners are advised to navigate with caution in the area.

Charts will be updated in due course.

Chart which will be affected - Aus 178 - Aus 790

374(T)/2022 AUSTRALIA - TASMANIA - Hobart - New Town Bay - Wreck
Marine and Safety Tasmania Notice M144(T)/2022

A wreck exists in position 42° 50'.65 S 147° 19'.10 E.

Mariners are advised to navigate with caution in the area.

Chart temporarily affected - Aus 171

408(T)/2022 AUSTRALIA - TASMANIA - Port Fenton - Artificial reef northwestwards
Marine and Safety Tasmania Notice M152/2022

Works to establish an artificial reef are in progress in an area bounded by the following positions:

41° 07'.45 S 146° 13'.22 E
41° 07'.35 S 146° 13'.22 E
41° 07'.35 S 146° 13'.37 E
41° 07'.45 S 146° 13'.37 E.

A 300m exclusion zone exists around the works.

Mariners are advised to navigate with caution in the area.

Chart temporarily affected - Aus 164

409(T)/2022 AUSTRALIA - TASMANIA - River Tamar - Riverside North - Light unlit
Marine and Safety Tasmania Notice M164/2022

The light, Q(3) G.6s 2M No11 (41° 23'.62 S 147° 05'.73 E), is unlit.

Chart temporarily affected - Aus 168

410(P)/2022 AUSTRALIA - TASMANIA - Rocky Cape to East sandy Point - Shoaling
Australian Hydrographic Office

Latest survey indicates shoaler depths than those charted may exist in an area bounded by the high water line and the following positions:

40° 42'.39 S 145° 05'.11 E
40° 45'.45 S 145° 20'.92 E
40° 56'.19 S 145° 49'.10 E
41° 04'.76 S 146° 11'.06 E
41° 06'.47 S 146° 28'.51 E
41° 01'.97 S 146° 42'.97 E
40° 56'.62 S 146° 55'.07 E
40° 39'.89 S 147° 58'.89 E.

Mariners are advised to navigate with caution in the area.

Electronic Navigation Charts (ENCs) have been updated, Paper Charts will be updated in due course.

Chart which will be affected - Aus 163 - Aus 164 - Aus 167 - Aus 178 - Aus 179 - Aus 487 - Aus 790 - Aus 798 - Aus 799 - Aus 800

PAPUA NEW GUINEA and SOUTH PACIFIC

664(T)/2017 PACIFIC OCEAN - Scientific instruments UKHO

Grey pillar buoys exist in the following positions:

5° 02'.3 N 164° 49'.9 E
0° 00'.8 N 164° 59'.8 E
1° 59'.9 S 164° 58'.6 E
5° 01'.0 S 165° 10'.0 E
8° 02'.2 S 164° 46'.4 E.

Chart temporarily affected - Aus 4623 (INT 623)

35(T)/2018 PAPUA NEW GUINEA - Batumata Point - Survey operations southeastwards

Former Notice - 990(T)/2017 is cancelled

National Maritime Safety Authority PNG Notice 16(T)/2017

MV *Guru* is conducting survey operations in the vicinity of the following buoys:

<i>Position</i>	<i>Remarks</i>
10° 47'.56 S 149° 13'.05 E	special light buoy, <i>Fl(5)Y.15s</i>
10° 48'.12 S 149° 13'.90 E	subsurface mooring buoy

A 0.5M radius exclusion zone exists around each buoy.

Mariners are advised to navigate with caution in the area.

Chart temporarily affected - Aus 507 - Aus 4620 (INT 620) - Aus 4621 (INT 621)

789(T)/2018 PAPUA NEW GUINEA - Bismarck Sea - Fish aggregating devices

National Maritime Safety Authority PNG Warning 9/2018

17 fish aggregating devices exist in an area bounded by the following positions:

4° 30'.0 S 149° 55'.0 E
4° 40'.0 S 149° 55'.0 E
4° 40'.0 S 150° 45'.0 E
4° 30'.0 S 150° 45'.0 E.

Mariners are advised to navigate with caution.

Chart temporarily affected - Aus 4622 (INT 622)

286(P)/2019 PAPUA NEW GUINEA - Madang Harbour - Shoaling

LADS Flight

Latest survey shows shoaler depths than those charted may exist in an area bounded by the following positions:

05° 04'.51 S 145° 48'.06 E
05° 11'.75 S 145° 47'.82 E
05° 11'.91 S 145° 49'.61 E
05° 10'.14 S 145° 50'.36 E
05° 04'.14 S 145° 48'.99 E.

Mariners are advised to navigate with caution in the area.

Charts will be updated in due course.

Chart which will be affected - PNG 646

346(T)/2019 PAPUA NEW GUINEA - Huon Gulf - Light buoy off station

National Maritime Safety Authority PNG Notice 9(T)/2017

The isolated danger light buoy, *Q(2)5s* (6° 48'.38 S 146° 58'.28 E), is off station.

Chart temporarily affected - PNG 643

968(P)/2019 PAPUA NEW GUINEA - Duke of York Island - Shoaling
LADS Flight

Latest survey shows shoaler depths than those charted may exist in an area bounded by the following positions:

4° 07'.43 S 152° 28'.17 E
4° 10'.10 S 152° 30'.20 E
4° 11'.35 S 152° 30'.07 E
4° 13'.66 S 152° 28'.38 E
4° 15'.11 S 152° 25'.69 E
4° 13'.13 S 152° 22'.60 E
4° 11'.41 S 152° 23'.70 E
4° 07'.06 S 152° 23'.88 E
4° 06'.29 S 152° 24'.62 E
4° 06'.17 S 152° 25'.41 E.

Mariners are advised to navigate with caution in the area.

Charts will be updated in due course.

Chart which will be affected - Aus 545 - Aus 554 - PNG 679 - PNG 680

1110(T)/2019 PAPUA NEW GUINEA - Oreore Channel - Light buoy off station
National Maritime Safety Authority PNG Coastal Navigation Warning 39/2019

The port lateral light buoy, *Q.R* (10° 13'.68 S 150° 52'.78 E), is off station.

Chart temporarily affected - PNG 628

1331(T)/2019 PAPUA NEW GUINEA - Isulailai Point - Light beacon unlit
National Maritime Safety Authority PNG Warning 43/2019

The light beacon, *Fl(2)5s 17m 9M* (10° 33'.63 S 150° 41'.71 E), is unlit.

Chart temporarily affected - Aus 625 - PNG 508

516(T)/2020 PAPUA NEW GUINEA - Kimbe - Light beacon unlit
National Maritime Safety Authority PNG Notice 21(T)/2020

The light beacon, *Fl.G.5s 6m 4M No3* (5° 32'.00 S 150° 09'.56 E), is unlit.

Chart temporarily affected - PNG 674 - PNG 677

564(T)/2020 PAPUA NEW GUINEA - Dampier Strait - Nesup Channel - Light buoys off station
National Maritime Safety Authority PNG , B Cooper

The port lateral light buoy, *Fl.R.2s* (5° 53'.27 S 148° 08'.70 E), and the starboard lateral light buoy, *Fl.G.2s* (5° 53'.92 S 148° 09'.05 E), are off station.

Chart temporarily affected - PNG 673

668(T)/2020 PAPUA NEW GUINEA - Dauan Island - Light altered
HMAS *Mermaid*

The light, *Fl.R.6s* (9° 25'.38 S 142° 32'.07 E), has been temporarily altered to *F.R.*

Chart temporarily affected - Aus 841

771(T)/2020 PAPUA NEW GUINEA - Boera Head - Light unlit
National Maritime Safety Authority PNG Warning 6/2019

The light, *Fl.2-5s 33m 10M* (9° 23'.39 S 147° 00'.85 E), is unlit.

Chart temporarily affected - PNG 379 - PNG 647

826(P)/2020 PAPUA NEW GUINEA - Batumata Point - Shoaling
LADS Flight

Latest survey shows shoaler depths than those charted may exist in and around the islands and reefs in the area between Galovi (Howard) Reef (10° 11'.1 S 148° 08'.7 E) and Eunoro Island (10° 23'.6 S 149° 27.3 E).

Mariners are advised to navigate with caution in the area.

Charts will be updated in due course.

Chart which will be affected - PNG 506 - PNG 507 - PNG 623

829(T)/2020 PAPUA NEW GUINEA - Huon Gulf - Fish aggregating devices
National Maritime Safety Authority PNG Coastal Navigation Warning 8/2018

23 fish aggregating devices exist in an area bounded by the following positions:

7° 00'.0 S 147° 40'.0 E

7° 55'.0 S 147° 40'.0 E

7° 55'.0 S 148° 50'.0 E

7° 00'.0 S 148° 50'.0 E.

Mariners are advised to navigate with caution.

Chart temporarily affected - Aus 4620 (INT 620) - Aus 4621 (INT 621) - Aus 4622 (INT 622) - PNG 386 - PNG 521 - PNG 522 - PNG 523

963(T)/2020 PAPUA NEW GUINEA - Caution Bay - Light beacon damaged
National Maritime Safety Authority PNG Notice 39/2020

The light beacon, *Fl.Bu.2s 8M RL2* (9° 17'.98 S 146° 58'.19 E), is damaged and unlit.

Chart temporarily affected - PNG 647 - PNG 648

116(P)/2021 PAPUA NEW GUINEA - Kavieng to Neitab Island - Shoaling
LADS Flight

Latest survey shows shoaler depths than those charted may exist in an area bounded by the coast and the following positions:

2° 22'.61 S 150° 09'.71 E

2° 21'.43 S 150° 08'.54 E

2° 20'.33 S 150° 09'.36 E

2° 18'.98 S 150° 11'.37 E

2° 18'.08 S 150° 15'.72 E

2° 21'.25 S 150° 23'.71 E

2° 27'.18 S 150° 31'.04 E

2° 34'.90 S 150° 35'.68 E

2° 36'.12 S 150° 42'.35 E

2° 36'.96 S 150° 42'.41 E

2° 36'.40 S 150° 35'.77 E

2° 40'.83 S 150° 31'.32 E.

Shoaler depths may also exist between the Kavieng coast (2° 35'.21 S 150° 47'.31 E) and the islands (Nusa, Nusalik and Nago).

Mariners are advised to navigate with caution in the area.

Charts will be updated in due course.

Chart which will be affected - PNG 392 - PNG 393 - PNG 543 - PNG 666

118(T)/2021 PAPUA NEW GUINEA - Madehas Island - Light unlit
National Maritime Safety Authority PNG

The light, *Fl.10s 137m 16M* (5° 27'.63 S 154° 38'.06 E), is unlit.

Chart temporarily affected - Aus 399 - Aus 4604 (INT 604) - Aus 4622 (INT 622) - PNG 397 - PNG 684

481(T)/2021 PAPUA NEW GUINEA - Caution Bay - Light beacon unlit
National Maritime Safety Authority PNG Coastal Navigation Warning 9/2021

The light beacon, *Fl.G.3s 6M* (9° 18'.54 S 146° 57'.25 E), is unlit.

Chart temporarily affected - PNG 647

985(T)/2021 PAPUA NEW GUINEA - Saibai Island - Shoaling
Former Notice - 201(T)/2021 is cancelled
HMAS *Paluma* , HMAS *Mermaid*

Latest survey indicates shoaler depths than those charted exist in an area bounded by the following positions:

9° 20'.66 S 142° 36'.94 E
9° 20'.15 S 142° 39'.81 E
9° 17'.86 S 142° 48'.32 E
9° 21'.86 S 142° 47'.07 E
9° 21'.01 S 142° 40'.60 E
9° 21'.80 S 142° 37'.67 E
9° 22'.75 S 142° 37'.04 E
9° 22'.72 S 142° 35'.37 E
9° 22'.46 S 142° 34'.10 E
9° 21'.74 S 142° 34'.60 E.

Mariners are advised to navigate with caution in the area.

Charts will be updated in due course.

Chart temporarily affected - Aus 840 - Aus 841

1066(T)/2021 PAPUA NEW GUINEA - Ava Point - Light unlit
National Maritime Safety Authority PNG Coastal Navigation Warning 25/2021

The light, *Fl.12s 188m 10M* (10° 34'.14 S 149° 52'.89 E), is unlit.

Chart temporarily affected - Aus 4604 (INT 604) - Aus 4620 (INT 620) - Aus 4621 (INT 621) - PNG 507

1067(T)/2021 PAPUA NEW GUINEA - Tavui Point - Light unlit
National Maritime Safety Authority PNG Coastal Navigation Warning 26/2021

The light, *Fl.8s 47m 18M* (4° 08'.16 S 152° 10'.21 E), is unlit.

Chart temporarily affected - Aus 4604 (INT 604) - Aus 4622 (INT 622) - PNG 545 - PNG 554 - PNG 680

207(T)/2022 PAPUA NEW GUINEA - Cape St George - Light unlit
National Maritime Safety Authority PNG Coastal Navigation Warning 5/2022

The light, *Fl.5s 101m 10M* (4° 50'.86 S 152° 52'.61 E), is unlit.

Chart temporarily affected - Aus 4622 (INT 622) - PNG 397 - PNG 398 - PNG 554 - PNG 668

208(T)/2022 PAPUA NEW GUINEA - Unei Island - Light unlit
National Maritime Safety Authority PNG Coastal Navigation Warning 4/2022

The light, *Fl(4)16s 9m 10M* (3° 22'.69 S 143° 24'.58 E), is unlit.

Chart temporarily affected - Aus 4622 (INT 622) - PNG 389 - PNG 651

327(T)/2022 PAPUA NEW GUINEA - Bonvouloir Islands - Aulelowa (Hastings) Island - Light unlit
National Maritime Safety Authority PNG Coastal Navigation Warning 8/2022

The light, *Fl(2)6s 8m 10M* (10° 20'.48 S 151° 52'.07 E), is unlit.

Chart temporarily affected - PNG 509 - PNG 512

500(T)/2022 PAPUA NEW GUINEA - Tonoie Island to Dekatuwe Island - Light beacons unlit

National Maritime Safety Authority PNG Notice 9/2022, 10/2022

The light beacons, *Fl.G.5s 5m 5M* (10° 28'.45 S 151° 13'.56 E) and *Fl.2·5s 16m 10M* (10° 31'.89 S 151° 12'.74 E), are unlit.

Chart temporarily affected - PNG 509

670(P)/2022 PAPUA NEW GUINEA - Star Reefs Passage - Shoaling

Fugro LADS

Latest survey indicates shoaler depths than those charted may exist in an area bounded by the following positions:

8° 16'.32 S 149° 35'.81 E

8° 17'.57 S 149° 34'.96 E

8° 26'.58 S 149° 42'.16 E

8° 34'.69 S 149° 54'.56 E

8° 33'.37 S 149° 55'.41 E

8° 27'.31 S 149° 50'.78 E.

Mariners are advised to navigate with caution in the area.

Charts will be updated in due course.

Chart which will be affected - PNG 519

EAST TIMOR

NIL

MISCELLANEOUS

677(P)/2017 SOLOMON ISLANDS - Honiara and Lungga Roads - Shoaling UKHO

Latest survey shows shoaler depths than those charted may exist in the approaches to Honiara and within Lungga Roads (9° 25'.0 S 159° 58'.8 E).

Charts will updated in due course.

Chart which will be affected - SLB 101

678(T)/2017 SOLOMON ISLANDS - Lungga Point - Light beacon unlit Australian Hydrographic Service

The light beacon, *Fl(3)20s 10m 5M* (9° 24'.26 S 160° 01'.66 E), is unlit.

Chart temporarily affected - SLB 101 - SLB 201

679(T)/2017 SOLOMON ISLANDS - Maana'oba Island to Mbita'ama Harbour - Lights unlit Australian Hydrographic Service

The light, *Fl. 10s 9m 11M* (8° 17'.32 S 160° 48'.08 E), is unlit.

The light, *Fl.R. 10s 8m 3M* (8° 24'.11 S 160° 35'.15 E), is unlit.

Chart temporarily affected - Aus 4604 (INT 604) - Aus 4623 (INT 623) - Aus 4634 (INT 634) - SLB 304 - SLB 305

680(T)/2017 SOLOMON ISLANDS - Marau Sound - Light beacons unlit Australian Hydrographic Service

The following light beacons are unlit:

<i>Position</i>	<i>Remarks</i>
9° 51'.20 S 160° 51'.27 E	Front lead, <i>Fl.R. 3s 3m 2M</i>
9° 50'.78 S 160° 51'.32 E	Rear lead, <i>Q(2)10s 12m 5M</i>
9° 49'.86 S 160° 49'.47 E	<i>Fl.G. 3s 2m 2M</i>
9° 48'.53 S 160° 49'.90 E	Front lead, <i>Fl.R. 3s 3m 2M</i>
9° 48'.88 S 160° 49'.75 E	Rear lead, <i>Fl(2)15s 6m 4M</i>

Chart temporarily affected - SLB 101

681(T)/2017 SOLOMON ISLANDS - Ndende Island - Tomotu Neo - Light unlit Australian Hydrographic Service

The light, *Fl. 10s 15m 8M* (10° 42'.13 S 165° 47'.08 E), is unlit.

Chart temporarily affected - Aus 4623 (INT 623) - SLB 107

682(T)/2017 SOLOMON ISLANDS - Nega Point - Light beacons unlit Australian Hydrographic Service

Leading light beacons, *Fl. 3s 5m 3M* (8° 04'.07 S 156° 50'.23 E) and *Fl. 5s 11m 5M* (8° 04'.39 S 156° 50'.10 E), are unlit.

Chart temporarily affected - SLB 102 - SLB 301 - SLB 302

683(T)/2017 SOLOMON ISLANDS - San Christobal Island - Wangoraha Point - Light unlit Australian Hydrographic Service

The light, *Fl. 5s 30m 8M* (10° 17'.93 S 161° 35'.07 E), is unlit.

Chart temporarily affected - Aus 4623 (INT 623) - Aus 4634 (INT 634) - SLB 305

91(P)/2018 SOLOMON ISLANDS - Ghizo Island - Shoaling
Secretariat of the Pacific Community

Latest survey shows shoaler depths than those charted may exist in and around the islands and reefs in the area between Naru Island (8° 08'.3 S 156° 55'.1 E) and Sepo Island (8° 03'.2 S 156° 49.5 E).

Mariners are advised to navigate with caution in the area.

Charts will be updated in due course.

Chart which will be affected - SLB 102 - SLB 301 - SLB 302

847(T)/2018 SOLOMON ISLANDS - Nusatupe Island - Topmark destroyed
Solomon Islands Maritime Safety Administration Notice 3/2018

The topmark on light beacon, *Fl(3)R.10s 10m 5M* (8° 05'.55 S 156° 51'.81 E), has been destroyed.

Chart temporarily affected - SLB 102 - SLB 301 - SLB 302

987(T)/2018 TIMOR-LESTE - Dili - Light unlit
HMAS *Paluma*

The light, *Fl.R.4s* (8° 33'.20 S 125° 34'.70 E), is unlit.

Chart temporarily affected - Aus 901

201(T)/2019 SOLOMON ISLANDS - Port Noro - Light beacon unreliable
Former Notice - 142(T)/2019 is cancelled
Solomon Islands Maritime Safety Administration Notice 1/2019, UKHO

The light beacon, *Fl.G.5s 10m 4M* (8° 15'.42 S 157° 11'.35 E), is unreliable.

Chart temporarily affected - SLB 102

512(T)/2019 SOLOMON ISLANDS - Guadalcanal Island - Nughu Kiki - Light beacon unlit
Solomon Islands Maritime Safety Administration Notice 3/2019

The light beacon, *Fl(2)10s 10m 10M* (9° 31'.39 S 159° 34'.20 E), is unlit.

Chart temporarily affected - SLB 303 - SLB 304

514(T)/2019 SOLOMON ISLANDS - Malakobi Island - Pizuanakelekele Reef - Light beacon unlit
Solomon Islands Maritime Safety Administration Notice 4/2019

The light beacon, *Fl.10s 10m 10M* (7° 20'.78 S 158° 01'.21 E), is unlit.

Chart temporarily affected - Aus 4623 (INT 623) - Aus 4634 (INT 634) - SLB 202 - SLB 302

44(P)/2020 SOLOMON ISLANDS - Bina Harbour - Shoaling
HMAS *Leeuwin*

Latest survey shows shoaler depths than those charted may exist in Bina Harbour (8° 56'.3 S 160° 45'.0 E).

Mariners are advised to navigate with caution in the area.

Charts will be updated in due course.

Chart which will be affected - SLB 104

406(P)/2020 SOLOMON ISLANDS - Port Noro to Kuri Point - Shoaling
Former Notice - 184(P)/2020 is cancelled
Australian Hydrographic Office, HMAS *Leeuwin*

Latest survey shows shoaler depths than those charted may exist in areas bounded by the following positions:

8° 15'.07 S 157° 11'.77 E
8° 15'.43 S 157° 11'.52 E
8° 15'.78 S 157° 11'.47 E
8° 15'.78 S 157° 12'.00 E
8° 15'.07 S 157° 11'.89 E;
and
8° 19'.68 S 157° 11'.83 E
8° 21'.27 S 157° 12'.62 E
8° 21'.09 S 157° 13'.14 E
8° 19'.05 S 157° 12'.30 E
8° 19'.17 S 157° 11'.76 E.

Mariners are advised to navigate with caution in the area.

Charts will be updated in due course.

Chart which will be affected - SLB 102

80(P)/2022 SOUTHERN OCEAN - Antarctica - Mawson - Shoaling
Australian Antarctic Division

Latest survey indicates shoaling in the approach to Mawson in the following locations

67° 25'.00 S 062° 46'.20 E
67° 29'.58 S 062° 52'.92 E
67° 30'.08 S 062° 50'.45 E
67° 30'.70 S 062° 53'.35 E
67° 30'.45 S 062° 51'.56 E
67° 35'.00 S 062° 52'.25 E

Mariners are advised to navigate with caution in the area.

Charts will be updated in due course.

Chart which will be affected - Aus 600 (INT 9036)

303(T)/2022 SOLOMON ISLANDS - Indispensable Strait - Alite Reef - Light beacon unlit
Solomon Islands Maritime Safety Administration

The light beacon, *Q.10m 4M* (8° 51'.78 S 160° 36'.26 E), is unlit.

Chart temporarily affected - Aus 4623 (INT 623) - Aus 4634 (INT 634) - SLB 304

304(T)/2022 SOLOMON ISLANDS - Nggela Channel - Indalilau Island - Light beacon unlit
Solomon Islands Maritime Safety Administration

The light beacon, *Fl(2)10s 8m 10M* (9° 11'.60 S 160° 21'.65 E), is unlit.

Chart temporarily affected - Aus 4604 (INT 604) - Aus 4623 (INT 623) - Aus 4634 (INT 634) - SLB 201 - SLB 304

361(P)/2022 TIMOR-LESTE - Dili - Shoaling
HMAS *Leeuwin*

Latest survey indicates shoaler depths than those charted may exist in an area bounded by the coast and the following positions:

8° 33'.82 S 125° 23'.74 E
8° 32'.93 S 125° 23'.67 E
8° 31'.38 S 125° 31'.30 E
8° 32'.69 S 125° 31'.18 E.

Mariners are advised to navigate with caution in the area.

Charts will be updated in due course.

Chart which will be affected - Aus 312 - Aus 313 - Aus 321