

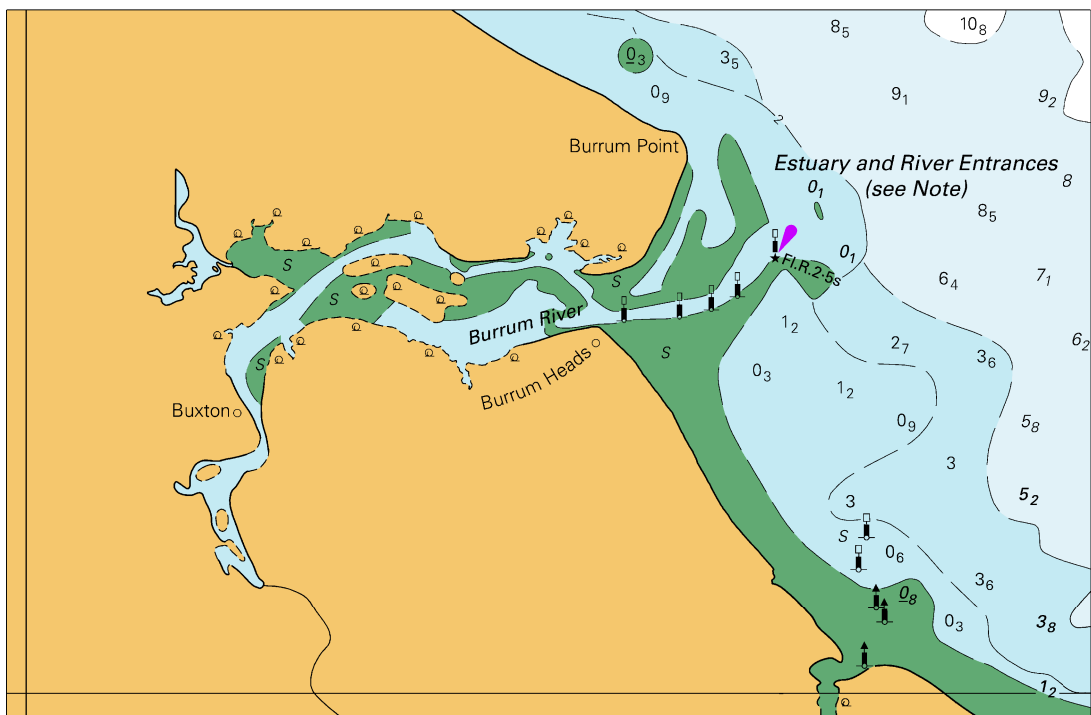
*To accompany Australian Notice to Mariners 772/2022*

ESTUARY AND RIVER ENTRANCES

The crossing of coastal bars and entry to rivers and estuaries is potentially dangerous. Bars and entrances are dynamic in nature, hence the depth and preferred approach may vary. Leading beacons and other navigational aids may not always indicate the best approach. If mariners are unsure of the condition at a particular bar or entrance, local information should be sought prior to crossing.

*Note for chart Aus 818*

To accompany Australian Notice to Mariners 770/2022

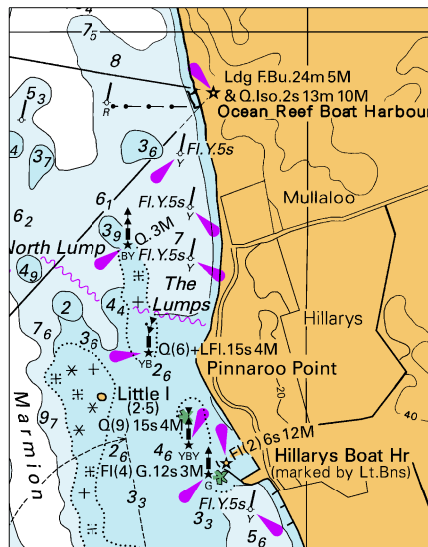


Block for chart Aus 817

© Commonwealth of Australia 2022

(143.6 x 93.6mm)

To accompany Australian Notice to Mariners 775/2022



Block for chart Aus 754 (56.4 x 71.7mm)

© Commonwealth of Australia 2022