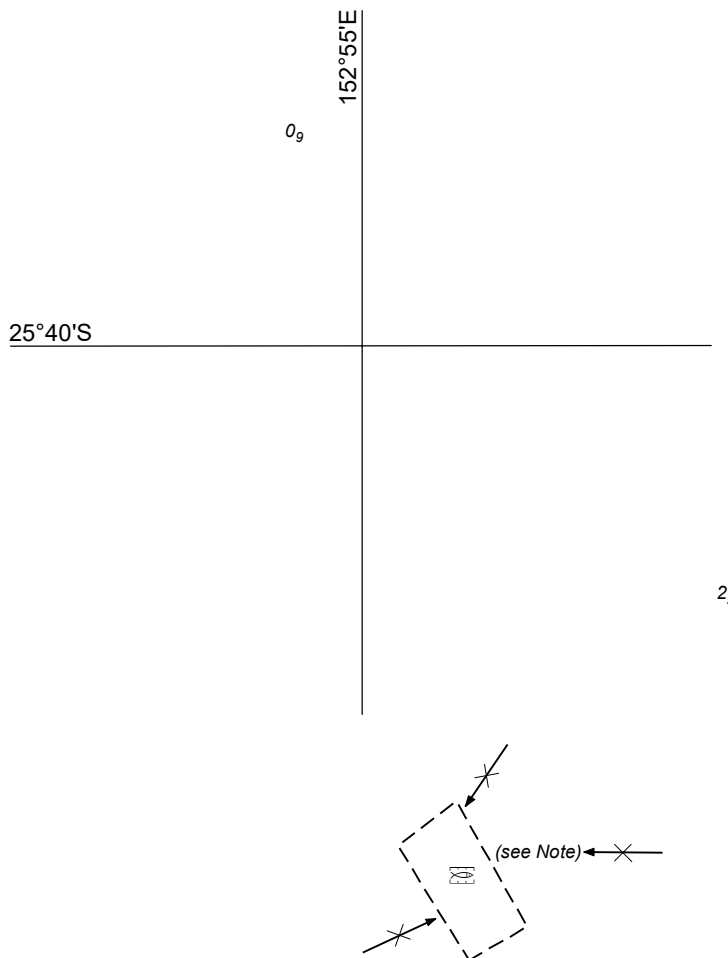
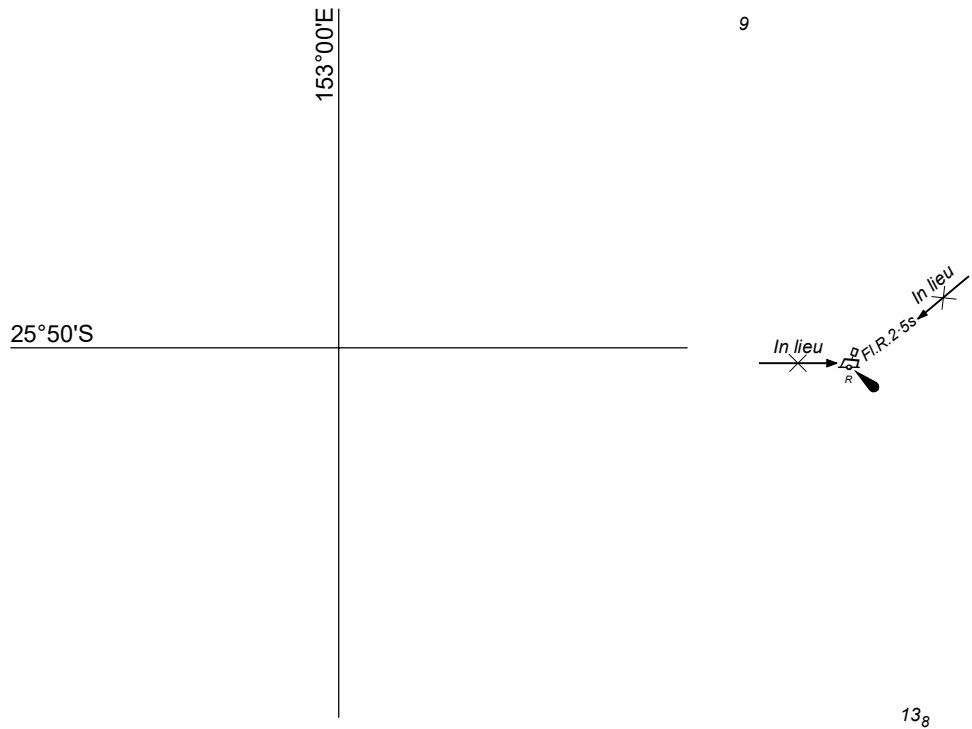
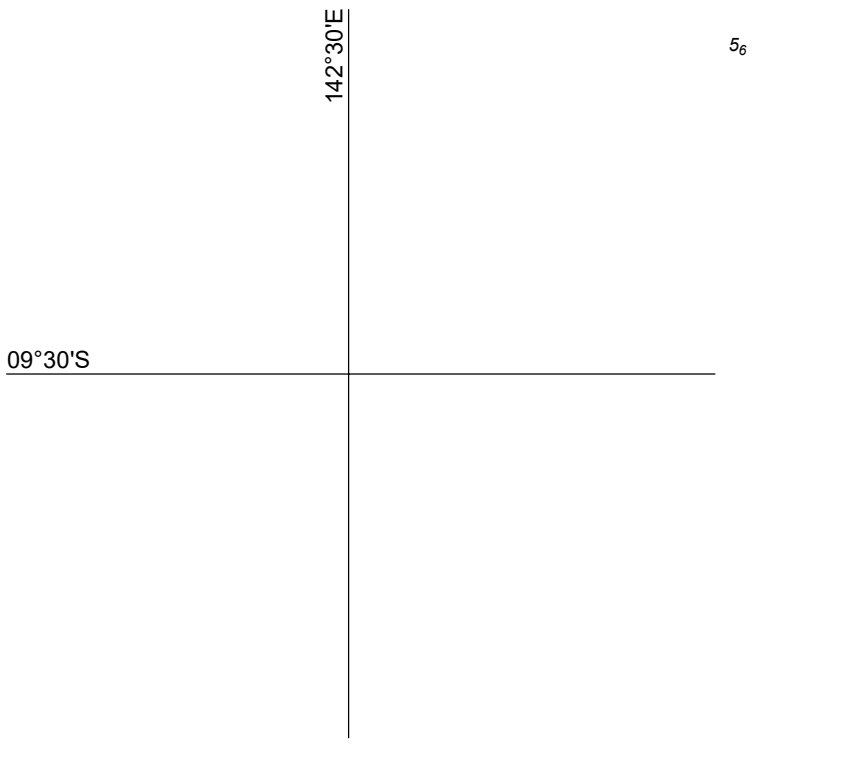


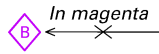
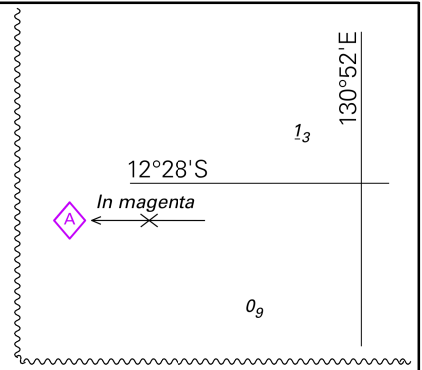
PLAN: AIRLIE BEACH



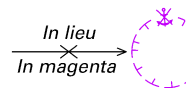
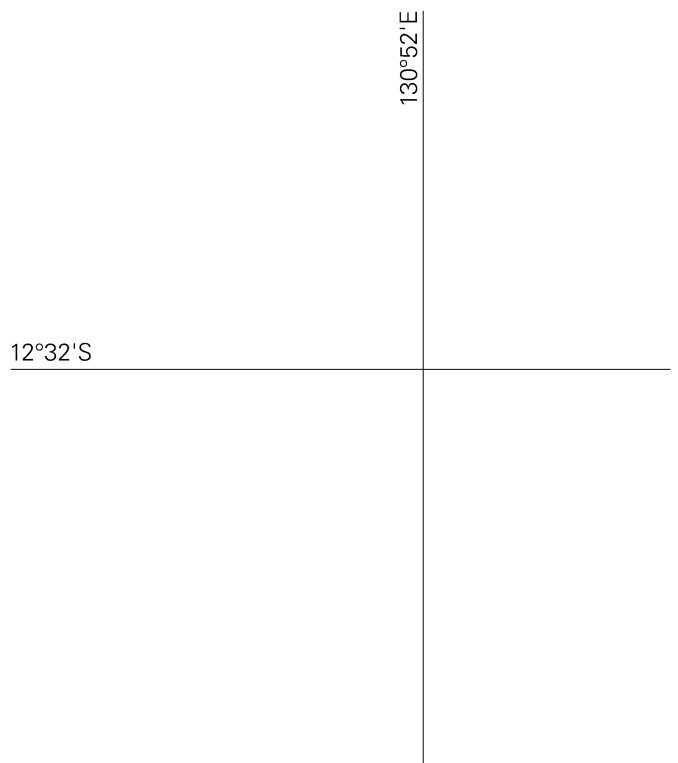






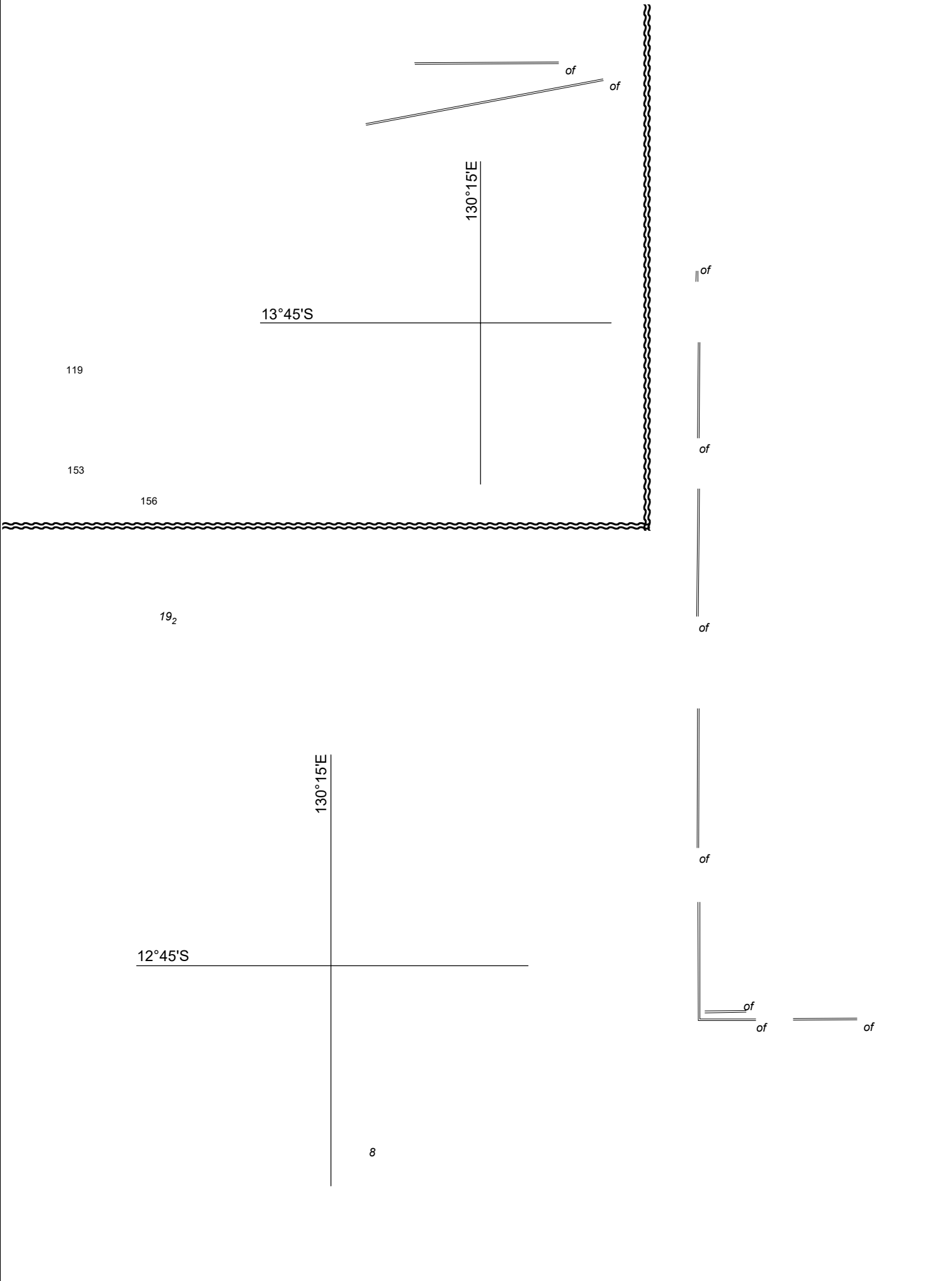


13<sub>2</sub>



8<sub>3</sub>





Previous Notice 538/2020

NTM 187/2021



AUS 724

© Commonwealth of Australia 2021

115°23'E

30°00'S

✕ → INSERT NOTE ← ✕

MT PERON  
287

GAIRDNER

115°00'E

34

*In magenta* ✕ → ENC  
(see Note)

31°00'S

44

Continued ↑ of  
of  
Continued → of

Previous Notice 1315/2019

NTM 189/2021



Australian Government  
Department of Defence

AUS 753

© Commonwealth of Australia 2021



31°00'S

92

*In magenta*  
ENC  
(see Note)

Continued  
of  
of  
Continued

115°00'E

38

31°45'S

Move  
of  
Move

115°45'E

31°15'S

INSERT  
NOTE

WANNEROO

Lancelin

115°51-09'E

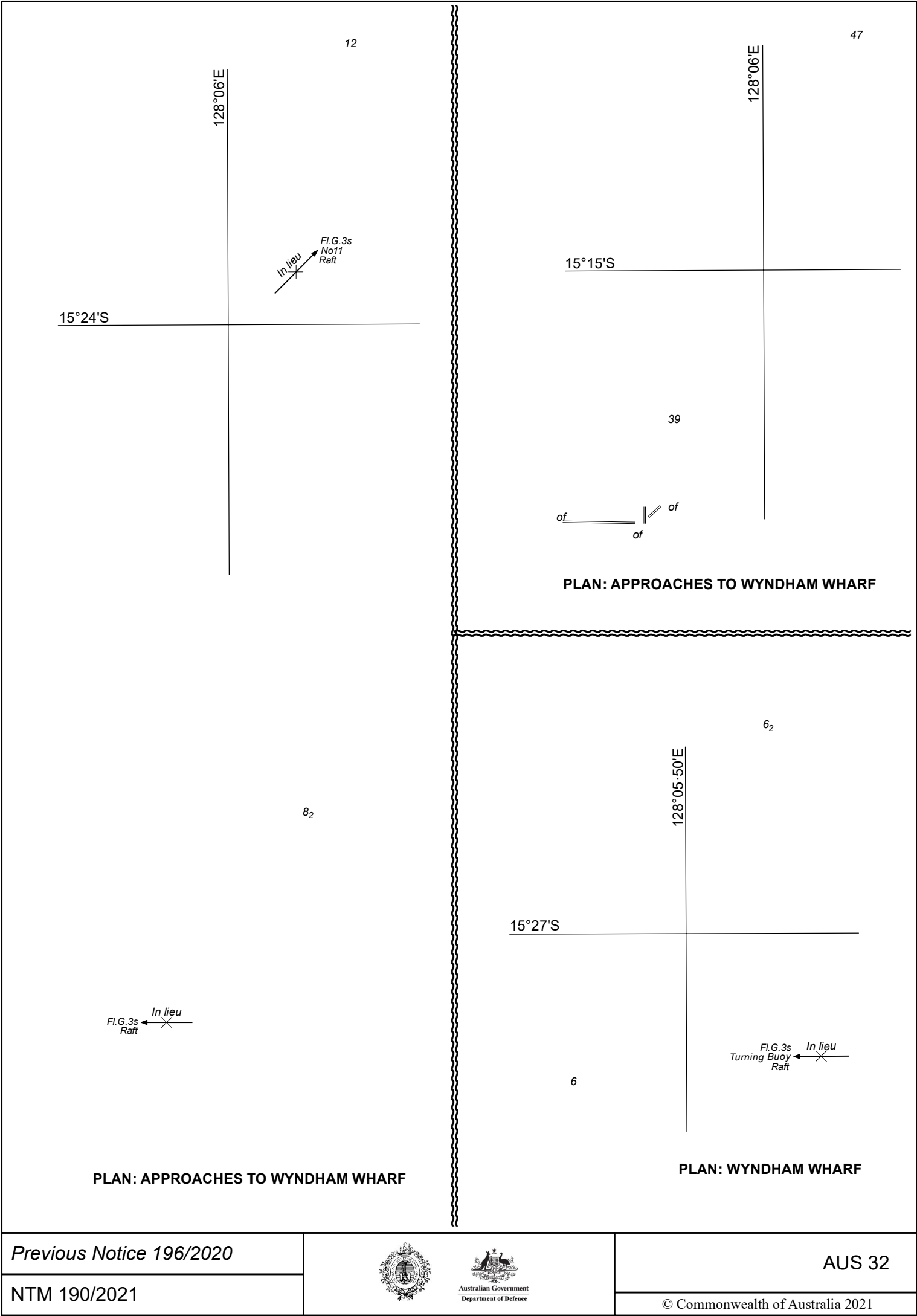
Previous Notice 20/2020

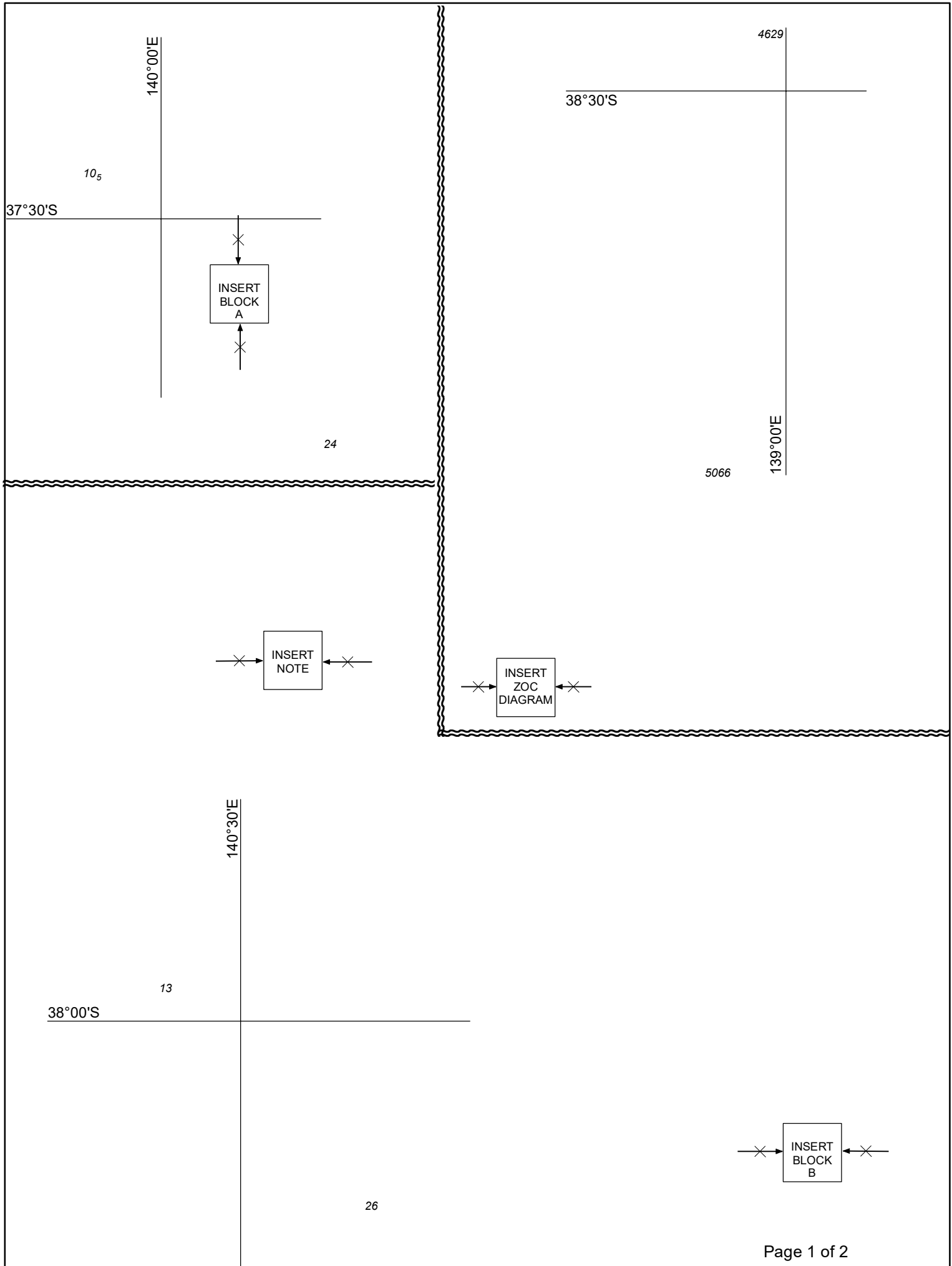
NTM 188, 189/2021

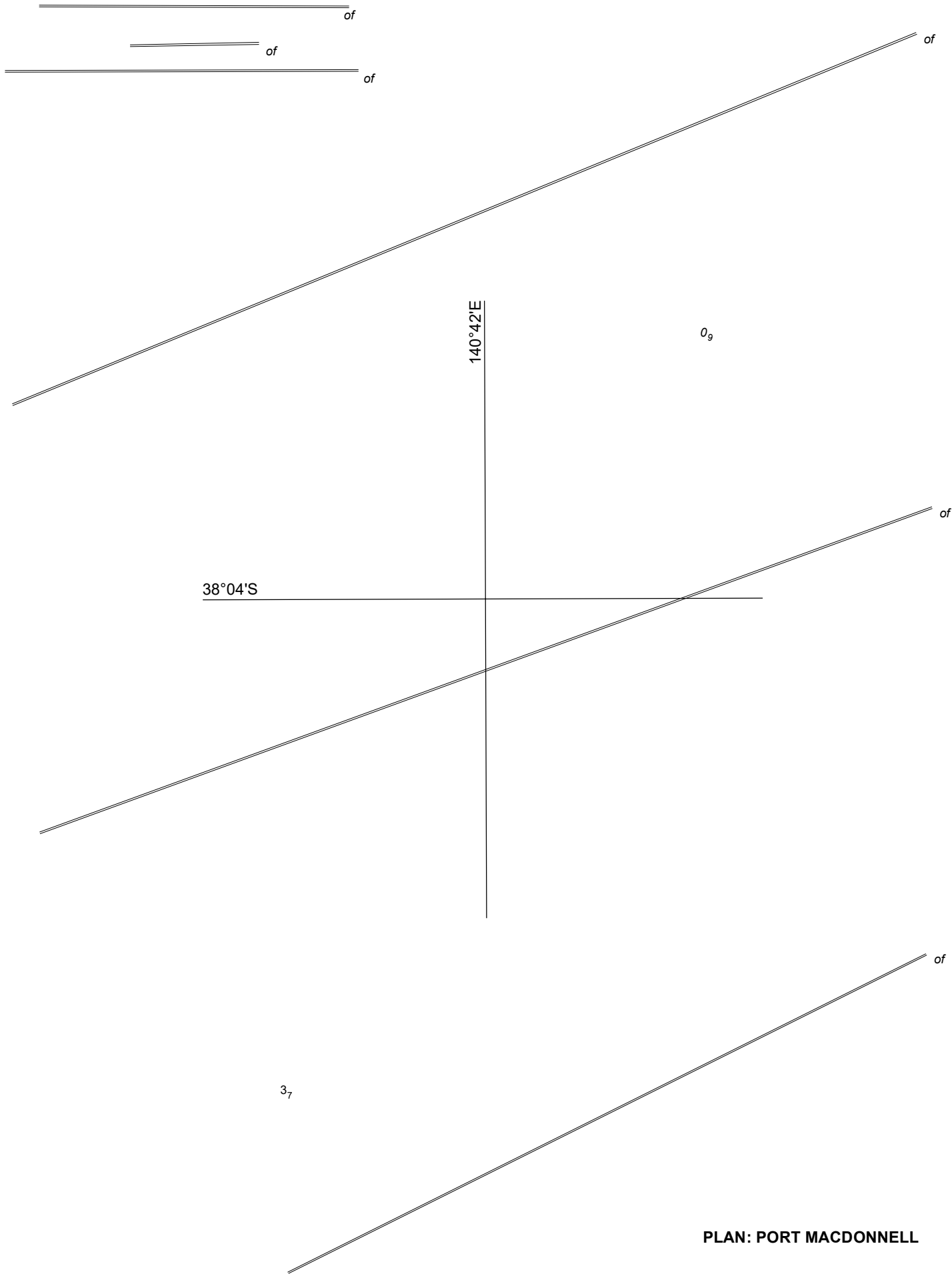


AUS 754

© Commonwealth of Australia 2021







**PLAN: PORT MACDONNELL**

Page 2 of 2

*Previous Notice 23/2020*

NTM 191/2021



**AUS 348**

© Commonwealth of Australia 2021

of  
of  
of  
of

35

138°00'E

36°00'S

54

34°00'S

135°06'E

Continued  
of  
Continued  
of  
21

64

Spencer Gulf

of  
of

of  
of  
of

137°00'E

Southern Ocean

33°00'S

Previous Notice 47/2021

NTM 191/2021



Australian Government  
Department of Defence

AUS 485

© Commonwealth of Australia 2021

4<sub>8</sub>

144°42'E

38°08'S

3<sub>3</sub>



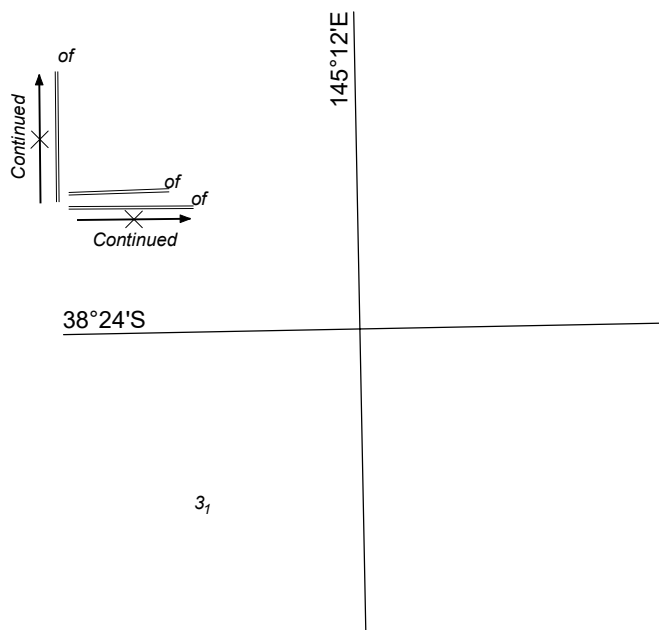
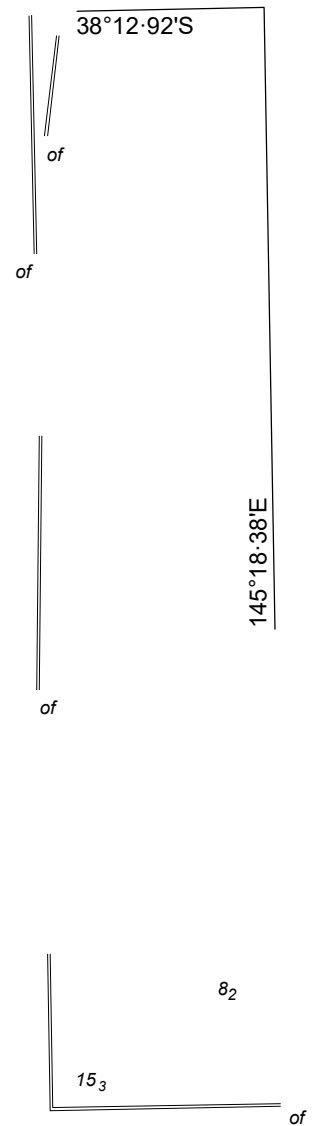
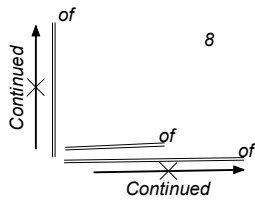
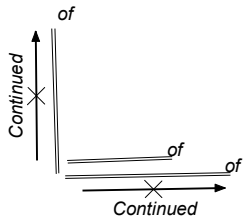
Previous Notice 101/2021

NTM 192/2021



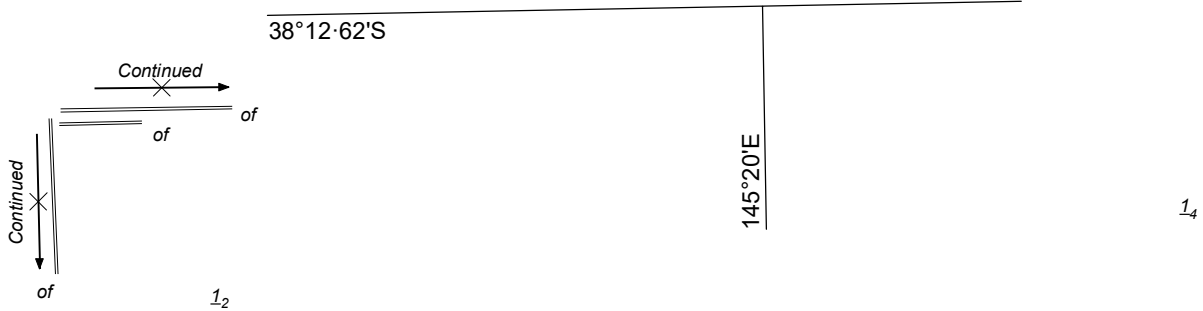
AUS 157

© Commonwealth of Australia 2021

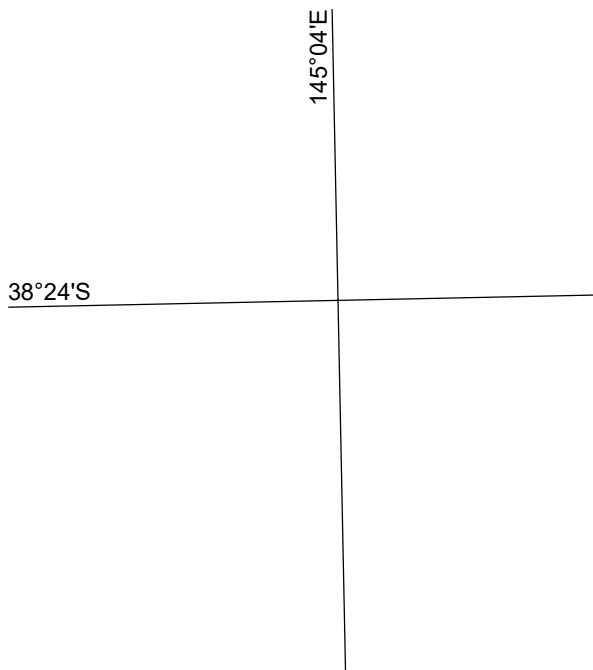
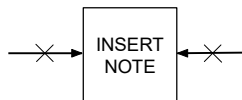
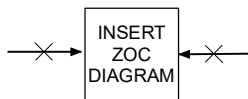
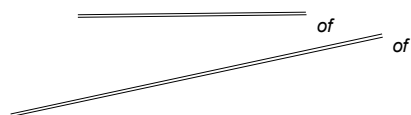


*In magenta* → ENC  
(see Note)





# PLAN: CONTINUATION OF WESTERN PORT

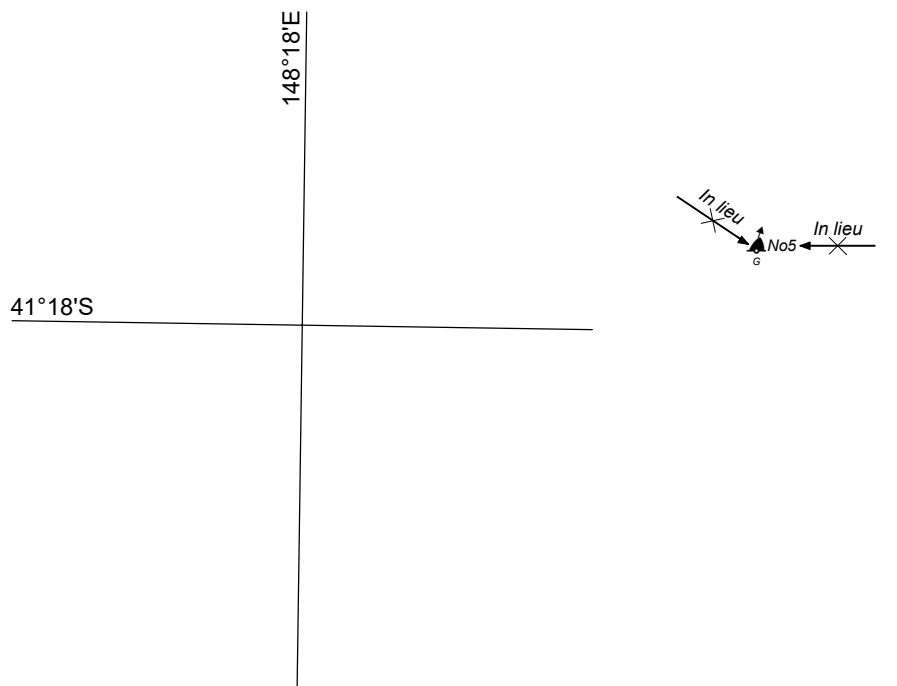


2<sub>8</sub>

6<sub>1</sub>







PLAN: GEORGES BAY

Previous Notice 955/2020

NTM 194/2021



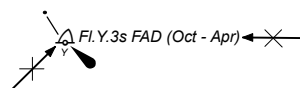
AUS 169

© Commonwealth of Australia 2021

6<sub>6</sub>

148°10'E

42°10'S



22<sub>3</sub>

Previous Notice 200/2020

NTM 195/2021



AUS 766

© Commonwealth of Australia 2021