



15 October 2021

Edition 21

AUSTRALIAN NOTICES TO MARINERS

Notices 863 - 922

Published fortnightly by the Australian Hydrographic Office



Australian Notices to Mariners are the authority for correcting charts and publications published by the Australian Hydrographic Office covering Australia, Papua New Guinea, Solomon Islands, Australian Antarctic Territory and Timor-Leste.

Commodore S.T. DUNNE RAN
Hydrographer of Australia

SECTIONS.

- I. **Australian Notices to Mariners, including blocks and notes.**
- II. **Hydrographic Reports.**

SUPPLEMENTS.

- I. **Tracings**
- II. **Cumulative List of Australian Notices to Mariners.**
- III. **Cumulative List of Temporary and Preliminary Australian Notices to Mariners.**
- IV. **Temporary and Preliminary Notices in force.**

© Commonwealth of Australia 2021

This work is copyright. Apart from any use permitted under the Copyright Act 1968, no part may be reproduced by any process, adapted, communicated or commercially exploited without prior written permission from The Commonwealth represented by the Australian Hydrographic Office.

IMPORTANT NOTICE

This edition of Notices to Mariners includes all significant information affecting AHO products which the AHO has become aware of since the last edition. All reasonable efforts have been made to ensure the accuracy and completeness of the information, including third party information, on which these updates are based. The AHO regards third parties from which it receives information as reliable, however the AHO cannot verify all such information and errors may therefore exist. The AHO does not accept liability for errors in third party information.

GENERAL INSTRUCTIONS

The substance of these notices should be inserted on the charts affected.

Bearings are referred to the true compass and are reckoned clockwise from North; those relating to lights are given as seen by an observer from seaward.

Positions quoted in notices relate to WGS84 which is the horizontal datum for all charts produced by the Australian Hydrographic Office.

The range quoted for a light is its nominal range.

Depths are with reference to the chart datum of each chart. Heights are above mean high water springs or mean higher high water, as appropriate.

The capital letter (P) or (T) after the number of any notice denotes a preliminary or temporary notice respectively, which are contained separately at the end of the permanent notices.

REPORTING OF DANGERS

Mariners are particularly requested to notify the AUSTRALIAN HYDROGRAPHIC OFFICE, Locked Bag 8801 Wollongong, NSW 2500 (Fax 02-4223 6599, e-mail datacentre@hydro.gov.au or, alternatively by filling in and submitting the [Hydrographic Notes](#) forms located on the web site – www.hydro.gov.au), immediately on the discovery of new dangers or suspected dangers to navigation. For changes or defects in aids to navigation notify AusSAR (Fax 02-6230 6868 or email rccaus@amsa.gov.au).

AUTHORISED USE

Copies of Australian notices are available free of charge from the Australian Hydrographic Office (AHO) website (www.hydro.gov.au) and through the eNotices (email) service (www.hydro.gov.au/enotices/enotices.htm).

Individual Notices may be copied for the purpose of inserting Notice substance on official charts and publications. Paper copies may be printed by chart agents and distributed to customers on a cost recovery basis. Participating chart agents are listed on the AHO website as providing a 'Paper Notices to Mariners' service (www.hydro.gov.au/webapps/jsp/agents/agents-list.jsp). Copies of the notices may not be sold for profit without prior written agreement.

NUMERICAL INDEX OF NOTICES TO MARINERS

Edition No 21

Notices	Aus Chart, INT Chart, ENC Cell, AHP, BA Pubs
863	Products - New Charts, New Editions, Withdrawn Charts
864	Aus 54, 207, 753, 762, SLB 104
865	Aus 813
866	Aus 204
867	Aus 200
868	Aus 200
869	Aus 818, 819
870	Aus 814
871	Aus 265
872	PNG 391
873	PNG 543
874	Aus 293, 299
875	Aus 14
876	Aus 319, 320
877	Aus 112
878	Aus 745
879	Aus 155
880(T)	Aus 813
881(T)	Aus 255
882(T)	Aus 238
883(T)	Aus 258
884(T)	Aus 258
885(T)	Aus 814
886(T)	Aus 236
887(T)	Aus 236
888(T)	Aus 828
889(T)	Aus 814
890(T)	Aus 235, 236
891(T)	Aus 256, 827
892(T)	Aus 248, 260, 367, 490, 820, 822
893(T)	Aus 4603, 4604, 4622, INT 603, 604, 622, PNG 391
894(T)	Aus 4604, 4622, INT 604, 622, PNG 397, 398, 554, 668
895(T)	PNG 508, 625
896(T)	PNG 519, 520
897(T)	Aus 293, 299
898(T)	Aus 25, 26
899(T)	Aus 20, 720, 721, 722
900(T)	Aus 328
901(T)	Aus 328
902(T)	Aus 328
903(T)	Aus 73
904(T)	Aus 73
905(T)	Aus 327
906(T)	Aus 327
907(T)	Aus 112, 606, 607, 754, 4060, 4070, 4071, 4708, 4709, 4714, 4725, INT 60, 70, 71, 708, 709, 714, 725
908(T)	Aus 318, 4721, INT 721
909(T)	Aus 117, 754, 755
910(T)	Aus 328, 742
911(T)	Aus 328
912(T)	Aus 327
913(T)	Aus 327, 4723, INT 723
914(T)	Aus 136
915(T)	Aus 357
916(T)	Aus 349, 787
917(T)	Aus 181, 357, 802
918(T)	Aus 487, 4644, INT 644
919(T)	Aus 163, 799
920(T)	Aus 797
921(T)	Aus 796
922(T)	Aus 4623, 4634, INT 623, 634, SLB 201, 304

NUMERICAL INDEX OF CHARTS AFFECTED

Edition No 21

Aus Chart	Notices
Aus 14	875
Aus 20	899(T)
Aus 25	898(T)
Aus 26	898(T)
Aus 54	864
Aus 73	903(T), 904(T)
Aus 112	877, 907(T)
Aus 117	909(T)
Aus 136	914(T)
Aus 155	879
Aus 163	919(T)
Aus 181	917(T)
Aus 200	867, 868
Aus 204	866
Aus 207	864
Aus 235	890(T)
Aus 236	886(T), 887(T), 890(T)
Aus 238	882(T)
Aus 248	892(T)
Aus 255	881(T)
Aus 256	891(T)
Aus 258	883(T), 884(T)
Aus 260	892(T)
Aus 265	871
Aus 293	874, 897(T)
Aus 299	874, 897(T)
Aus 318	908(T)
Aus 319	876
Aus 320	876
Aus 327	905(T), 906(T), 912(T), 913(T)
Aus 328	900(T), 901(T), 902(T), 910(T), 911(T)
Aus 349	916(T)
Aus 357	915(T), 917(T)
Aus 367	892(T)
Aus 487	918(T)
Aus 490	892(T)
Aus 606	907(T)
Aus 607	907(T)
Aus 720	899(T)
Aus 721	899(T)
Aus 722	899(T)
Aus 742	910(T)
Aus 745	878
Aus 753	864
Aus 754	907(T), 909(T)
Aus 755	909(T)
Aus 762	864
Aus 787	916(T)
Aus 796	921(T)
Aus 797	920(T)
Aus 799	919(T)
Aus 802	917(T)
Aus 813	865, 880(T)
Aus 814	870, 885(T), 889(T)

Aus Chart	Notices
Aus 818	869
Aus 819	869
Aus 820	892(T)
Aus 822	892(T)
Aus 827	891(T)
Aus 828	888(T)
Aus 4060	907(T)
Aus 4070	907(T)
Aus 4071	907(T)
Aus 4603	893(T)
Aus 4604	893(T), 894(T)
Aus 4622	893(T), 894(T)
Aus 4623	922(T)
Aus 4634	922(T)
Aus 4644	918(T)
Aus 4708	907(T)
Aus 4709	907(T)
Aus 4714	907(T)
Aus 4721	908(T)
Aus 4723	913(T)
Aus 4725	907(T)
PNG 391	872, 893(T)
PNG 397	894(T)
PNG 398	894(T)
PNG 508	895(T)
PNG 519	896(T)
PNG 520	896(T)
PNG 543	873
PNG 554	894(T)
PNG 625	895(T)
PNG 668	894(T)
SLB 104	864
SLB 201	922(T)
SLB 304	922(T)

INT Chart	Notices
INT 60	907(T)
INT 70	907(T)
INT 71	907(T)
INT 603	893(T)
INT 604	893(T), 894(T)
INT 622	893(T), 894(T)
INT 623	922(T)
INT 634	922(T)
INT 644	918(T)
INT 708	907(T)
INT 709	907(T)
INT 714	907(T)
INT 721	908(T)
INT 723	913(T)

INT Chart	Notices
INT 725	907(T)

863 AUSTRALIA - Products - New Charts, New Editions, Withdrawn Charts
Australian Hydrographic Office

New Charts

<i>Chart</i>	<i>Title and Geographical limits</i>	<i>Scale</i>	<i>Publication Date</i>	<i>Remarks</i>
NIL				

New Electronic Navigation Chart (Aus ENC)

<i>Cell Name</i>	<i>Title</i>	<i>Publication Date</i>	<i>Remarks</i>
AU5WSY01	Airlie Beach	7 October 2021	AU5269P1 has been withdrawn.
AU5JHQ01	Shute Harbour	7 October 2021	AU5269P2 has been withdrawn.
PG411150	Papua New Guinea - North East Coast - Brumer Islands to Goschen Strait	7 October 2021	AU411150 has been withdrawn.
PG311154	Papua New Guinea - Solomon Sea - Cell 04	7 October 2021	AU311154 has been withdrawn.
PG312149	Papua New Guinea - Coral Sea - Cell 06	7 October 2021	AU312149 has been withdrawn.
PG311146	Papua New Guinea - Coral Sea - Cell 04	7 October 2021	AU311146 has been withdrawn.
PG412154	Papua New Guinea - Louisiade Archipelago - Rossel Island	7 October 2021	AU412154 has been withdrawn.
PG310153	Papua New Guinea - Solomon Sea - Laughlan Islands to Woodlark Island	14 October 2021	AU310153 has been withdrawn.
PG406154	Papua New Guinea - Solomon Sea - Cape Hanpan to Sipai	7 October 2021	AU406154 has been withdrawn.
PG310154	Papua New Guinea - Solomon Sea - Cell 03	14 October 2021	AU310154 has been withdrawn.

New Editions and Withdrawn Charts

<i>Chart</i>	<i>Title</i>	<i>Scale</i>	<i>Publication Date</i>	<i>Remarks</i>
NIL				

Chart permanently withdrawn

Charts listed above as withdrawn no longer meet chart carriage requirements and should be marked as "superseded" and replaced with the new chart/ new edition listed prior to passage through the area covered by the new chart.

When placing orders with a chart agent between notice of forthcoming edition and its publication, mariners should advise whether their order pertains to the current edition or the new edition.

For further details refer to the AHO website at www.hydro.gov.au for new edition and new chart stock arrival information.

864 AUSTRALIA - Products - New Charts and New Editions to be published shortly

Australian Hydrographic Office

New Charts to be published shortly

<i>Chart</i>	<i>Title</i>	<i>Scale</i>	<i>Remarks</i>
NIL			

New Editions to be published shortly

<i>Chart</i>	<i>Title</i>	<i>Scale</i>	<i>Remarks</i>
Aus 207	Australia - East Coast - New South Wales - Approaches to Newcastle Inset: Hexham Reach	1:25 000 1:25 000	New edition with general updating throughout; including latest bathymetric data.
Aus 753	Australia - West Coast - Western Australia - Beagle Islands to Lancelin	1:150 000	New edition with general updating throughout; including latest bathymetric data.
Aus 762	Australia - South Coast - Western Australia - Investigator Island to Cape Le Grand	1:150 000	New edition with general updating throughout; including latest bathymetric data.
SLB104	South Pacific Ocean - Solomon Islands - Anchorages in the Solomon Islands Plans: Santa Isabel Island - Maringe Lagoon Santa Isabel Island - Thousand Ships Bay Malaita Island - Kwai Harbour to Uru Island Anchorage Santa Isabel Island - Allardyce Harbour Malaita Island - Bina Harbour Malaita Island - Auki Harbour Malaita Island - Kwakwaru Harbour	 1:75 000 1:75 000 1:50 000 1:20 000 1:20 000 1:12 500 1:10 000	New edition with general updating throughout; including latest bathymetric data for Bina Harbour.

Charts to be withdrawn without replacement 29 October 2021

<i>Chart</i>	<i>Title</i>	<i>Scale</i>	<i>Publication Date</i>
Aus 54	Australia - North West Coast - Western	1:7 500	13 November 2020
Edition 3	Australia - Port Hedland		

865 AUSTRALIA - NEW SOUTH WALES - Cape Byron - Fish aggregating device eastwards

Byron Bay Deep Sea Fishing Club

Aus 813 [272/2021]

Insert	special conical light buoy, <i>Fl. Y. 5s FAD</i> , without topmark	28° 37'.00 S	153° 42'.76 E
--------	--	--------------	---------------

866 AUSTRALIA - NEW SOUTH WALES - Pittwater - Careel Bay to Church Point - Buoys

Transport for NSW

Aus 204 [982/2020]

Replace	buoy with special cylindrical buoy without topmark	33° 36'.8 S	151° 19'.1 E
	buoy with special cylindrical buoy without topmark	33° 38'.8 S	151° 17'.4 E

867 AUSTRALIA - NEW SOUTH WALES - Port Jackson - Homebush Bay - Infrastructure

NSW Roads and Maritime Services , Australian Hydrographic Office

Aus 200 (Parramatta River) [NE 28/5/2021]

Insert	accompanying block A	33° 49'.8 S	151° 04'.5 E
--------	----------------------	-------------	--------------

868 AUSTRALIA - NEW SOUTH WALES - Port Jackson - Woolloomooloo Bay - Infrastructure

Royal Australian Navy

Aus 200 [867/2021]

Insert	accompanying block B	33° 51'.73 S	151° 13'.73 E
--------	----------------------	--------------	---------------

869 AUSTRALIA - QUEENSLAND - Bustard Head - Depths, light

Australian Hydrographic Office

Note: Smaller scale charts will be updated in due course.

Aus 818 [586/2021]

Insert	accompanying block	23° 55'.6 S	151° 51'.7 E
	accompanying ZOC diagram	24° 42'.5 S	152° 01'.0 E

Aus 819 [NE 20/8/2021]

Insert	accompanying block	23° 58'.7 S	151° 42'.5 E
--------	--------------------	-------------	--------------

870 AUSTRALIA - QUEENSLAND - Main Beach - Light buoy

Maritime Safety Queensland Notice 353/2021

Aus 814 [777/2021]

Insert	out of position special pillar light buoy, Fl. Y.3s, with topmark	27° 57'.59 S	153° 27'.43 E
--------	---	--------------	---------------

871 AUSTRALIA - QUEENSLAND - Port Alma - Depths

Maritime Safety Queensland

Aus 265 [470/2021]

Insert	contour, between	23° 30'.545 S	150° 56'.820 E
		23° 30'.398 S	150° 56'.876 E
		23° 29'.983 S	150° 56'.928 E
	depth, 9 ₁ m, enclosed by contour	23° 26'.381 S	150° 58'.564 E
	depth, 9 ₃ m, enclosed by contour	23° 26'.550 S	150° 58'.379 E
	depth, 9 ₃ m, enclosed by contour	23° 26'.772 S	150° 58'.211 E
	depth, 8 ₉ m, and extend contour N to enclose	23° 26'.918 S	150° 58'.798 E
	depth, 9 ₇ m, enclosed by contour	23° 27'.202 S	150° 58'.572 E
	depth, 9 ₅ m, enclosed by contour	23° 27'.213 S	150° 58'.043 E
	depth, 9 ₆ m, and extend contour E to enclose	23° 28'.628 S	150° 57'.560 E
	depth, 9 ₉ m, enclosed by contour	23° 28'.924 S	150° 57'.834 E
Replace	depth, 14 ₉ m, with depth, 13 ₈ m	23° 25'.46 S	150° 59'.42 E
Delete	contour, between	23° 30'.55 S	150° 56'.82 E
		23° 29'.98 S	150° 56'.93 E
	depth, 21m, and enclosing contour	23° 25'.81 S	150° 59'.00 E
	depth, 10 ₁ m	23° 26'.38 S	150° 58'.63 E
	depth, 10 ₈ m	23° 26'.75 S	150° 58'.26 E
	depth, 10 ₁ m	23° 27'.24 S	150° 58'.56 E

872 PAPUA NEW GUINEA - Bismarck Sea - Alim Island - Light

National Maritime Safety Authority PNG Coastal Navigation Warning 15/2021

PNG 391 [NC 19/1/2021]

Amend	light elevation to 32m	2° 53'.3 S	147° 03'.7 E
-------	------------------------	------------	--------------

873 PAPUA NEW GUINEA - New Ireland - Kapsu Bay - Beacon

Australian Hydrographic Office

PNG 543 [NC 3/4/2020]

Delete	beacon	2° 42'.9 S	151° 02'.4 E
--------	--------	------------	--------------

874 AUSTRALIA - TORRES STRAIT - Ellis Channel - Hovell Bar - Depths
Maritime Safety Queensland

Aus 293 [468/2021]

Insert	contour, between	10° 34'.147 S	142° 15'.706 E
		10° 34'.169 S	142° 15'.643 E
		10° 34'.197 S	142° 15'.696 E
		10° 34'.313 S	142° 15'.056 E
		10° 34'.328 S	142° 15'.103 E
	depth, 4 ₉ m, and extend contour SW to enclose	10° 34'.353 S	142° 15'.060 E
		10° 34'.308 S	142° 15'.290 E
Delete	contour, between	10° 34'.15 S	142° 15'.71 E
		10° 34'.20 S	142° 15'.70 E
	contour, between	10° 34'.31 S	142° 15'.06 E
		10° 34'.35 S	142° 15'.06 E

Aus 299 [779/2021]

Insert	depth, 1 ₅ m, and extend contour W to enclose	10° 34'.173 S	142° 15'.669 E
	depth, 1 ₃ m, enclosed by contour	10° 34'.216 S	142° 15'.535 E
	depth, 4 ₈ m, enclosed by contour	10° 34'.244 S	142° 15'.295 E
	depth, 4 ₉ m, and extend contour SW to enclose	10° 34'.308 S	142° 15'.290 E
	depth, 4 ₈ m, enclosed by contour	10° 34'.331 S	142° 15'.084 E
Delete	depth, 3 ₇ m	10° 34'.17 S	142° 15'.66 E
	depth, 5 ₃ m	10° 34'.34 S	142° 15'.09 E

875 AUSTRALIA - NORTHERN TERRITORY - Groote Eylandt - Milner Bay - Mooring buoy
Bhagwan Marine

Aus 14 (Milner Bay) [691/2021]

Insert	lit yellow cylindrical mooring buoy, <i>Fl.Y.4s</i>	13° 51'.382 S	136° 24'.836 E
--------	---	---------------	----------------

876 AUSTRALIA - WESTERN AUSTRALIA - Browse Island - Light buoys; restricted areas northwestwards
Former Notice - 648(T)/2021 is cancelled
INPEX Subsea Engineering , Shell Australia , NOPSEMA

Aus 319 [44/2021]

Insert	accompanying block	13° 52'.1 S	123° 14'.1 E
--------	--------------------	-------------	--------------

Aus 320 [10/2021]

Insert	accompanying block	13° 52'.1 S	123° 14'.1 E
--------	--------------------	-------------	--------------

877 AUSTRALIA - WESTERN AUSTRALIA - Fremantle - Rous Head Harbour - Depths
Maritime Safety Queensland

Aus 112 [364/2021]

Insert	depth, 3 ₉ m	32° 02'.959 S	115° 43'.827 E
Delete	contour, between	32° 02'.99 S	115° 43'.79 E
		32° 02'.94 S	115° 43'.83 E
		32° 03'.02 S	115° 43'.83 E
	depth, 4 ₈ m	32° 02'.94 S	115° 43'.87 E

878 AUSTRALIA - WESTERN AUSTRALIA - Pilgonaman Bay - Reef delineation
Australian Hydrographic Office

Aus 745 [307/2020]

Insert	accompanying block	22° 12'.8 S	113° 48'.8 E
--------	--------------------	-------------	--------------

879 **AUSTRALIA - VICTORIA - Port Phillip - Point Cook - Buoy**
Parks Victoria Notice 253/2021

Aus 155 [817/2021]

Insert special pillar buoy without topmark

37° 55'.475 S 144° 48'.689 E

880(T)/2021 AUSTRALIA - NEW SOUTH WALES - Cape Byron - Light buoy off station northwards
Byron Bay Deep Sea Fishing Club

The special light buoy, *Fl. Y. 5s* (28° 35'.40 S 153° 38'.11 E), is off station.

Chart temporarily affected - Aus 813

881(T)/2021 AUSTRALIA - QUEENSLAND - Abbot Point - Scientific instrument recovered
Former Notice - 957(T)/2020 is cancelled
Maritime Safety Queensland Notice 392(T)/2020

Cancel this notice on receipt.

Chart formerly affected - Aus 255

882(T)/2021 AUSTRALIA - QUEENSLAND - Brisbane River - Humbug Reach - Harbour works completed
Former Notice - 1215(T)/2019 is cancelled
Maritime Safety Queensland Notice 469(T)/2019

Cancel this notice on receipt.

Chart formerly affected - Aus 238

883(T)/2021 AUSTRALIA - QUEENSLAND - Gladys Inlet - Light buoy restored
Former Notice - 521(T)/2017 is cancelled
Maritime Safety Queensland Notice 222(T)/2017

Cancel this notice on receipt.

Chart formerly affected - Aus 258

884(T)/2021 AUSTRALIA - QUEENSLAND - Johnstone River - Light buoy restored
Former Notice - 458(T)/2020 is cancelled
Maritime Safety Queensland

Cancel this notice on receipt.

Chart formerly affected - Aus 258

885(T)/2021 AUSTRALIA - QUEENSLAND - Main Beach - Scientific instrument recovered
Former Notice - 787(T)/2021 is cancelled
Maritime Safety Queensland Notice 353/2021

Cancel this notice on receipt.

Chart formerly affected - Aus 814

886(T)/2021 AUSTRALIA - QUEENSLAND - Moreton Bay - Juno Point - Harbour works completed
Former Notice - 688(T)/2018 is cancelled
Maritime Safety Queensland Notice 296(T)/2018

Cancel this notice on receipt.

Chart formerly affected - Aus 236

887(T)/2021 AUSTRALIA - QUEENSLAND - Moreton Bay - Scientific instrument recovered*Former Notice* - 175(T)/2019 is cancelled

Maritime Safety Queensland Notice 84(T)/2019

Cancel this notice on receipt.

Chart formerly affected - Aus 236**888(T)/2021 AUSTRALIA - QUEENSLAND - Myrmidon Reef - Scientific instruments recovered***Former Notice* - 390(T)/2020 is cancelled

Australian Institute of Marine Science

Cancel this notice on receipt.

Chart formerly affected - Aus 828**889(T)/2021 AUSTRALIA - QUEENSLAND - Point Lookout - Light buoy repositioned eastwards**

Maritime Safety Queensland Notice 372/2021

The special light buoy, *Fl(5)Y.20s* (27° 23'.04 S 153° 52'.63 E), has been temporarily repositioned to 27° 23'.56 S 153° 52'.68 E.

Chart temporarily affected - Aus 814**890(T)/2021 AUSTRALIA - QUEENSLAND - Pumicestone Channel - Scientific instruments recovered***Former Notice* - 714(T)/2016 is cancelled

Maritime Safety Queensland

Cancel this notice on receipt.

Chart formerly affected - Aus 235 - Aus 236**891(T)/2021 AUSTRALIA - QUEENSLAND - Rattlesnake Island - Live firing**

Maritime Safety Queensland Notice 373(T)/2021

Live firing activities will be conducted within a 5M radius of position 19° 02'.27 S 146° 36'.43 E on 26 October, 29 October and 9 November 2021.

Mariners are advised to navigate with caution and keep well clear of the area.

Chart temporarily affected - Aus 256 - Aus 827**892(T)/2021 AUSTRALIA - QUEENSLAND - Shoalwater Bay - Live firing completed***Former Notices* - 820(T)/2021, 846(T)/2021 are cancelled

Maritime Safety Queensland Notice 334(T)/2021, 342(T)/2021

Cancel this notice on receipt.

Chart formerly affected - Aus 248 - Aus 260 - Aus 367 - Aus 490 - Aus 820 - Aus 822**893(T)/2021 PAPUA NEW GUINEA - Bismarck Sea - Alim Island - Light relit***Former Notice* - 164(T)/2021 is cancelled

National Maritime Safety Authority PNG Coastal Navigation Warning 15/2021

Cancel this notice on receipt.

Chart formerly affected - Aus 4603 (INT 603) - Aus 4604 (INT 604) - Aus 4622 (INT 622) - PNG 391

894(T)/2021 PAPUA NEW GUINEA - Cape St George - Light relit*Former Notice* - 255(T)/2021 is cancelled

National Maritime Safety Authority PNG Coastal Navigation Warning 16/2021

Cancel this notice on receipt.

Chart formerly affected - Aus 4604 (INT 604) - Aus 4622 (INT 622) - PNG 397 - PNG 398 - PNG 554 - PNG 668**895(T)/2021 PAPUA NEW GUINEA - Kwanasausau (China) Strait - Weku Una - Light beacon unlit**

National Maritime Safety Authority PNG Coastal Navigation Warning 20/2021

The light beacon, *Fl(2)8s 10m 10M* (10° 36'.18 S 150° 36'.63 E), is unlit.**Chart temporarily affected - PNG 508 - PNG 625****896(T)/2021 PAPUA NEW GUINEA - Veale Reef to Greaves Reef - Lights unlit**

National Maritime Safety Authority PNG Coastal Navigation Warning 21/2021, 22/2021

The light, *Fl.2-5s 9m 10M* (9° 11'.94 S 149° 28'.72 E), is unlit.The light, *Fl(3)12s 11m 10M* (9° 10'.83 S 149° 27'.05 E), is unlit.**Chart temporarily affected - PNG 519 - PNG 520****897(T)/2021 AUSTRALIA - TORRES STRAIT - Thursday Island - Harbour works completed***Former Notice* - 252(T)/2020 is cancelled

Maritime Safety Queensland

Cancel this notice on receipt.

Chart formerly affected - Aus 293 - Aus 299**898(T)/2021 AUSTRALIA - NORTHERN TERRITORY - Darwin - Fort Point - Harbour works completed***Former Notice* - 646(T)/2021 is cancelled

Department of Infrastructure, Planning and Logistics NT

Cancel this notice on receipt.

Chart formerly affected - Aus 25 - Aus 26**899(T)/2021 AUSTRALIA - NORTHERN TERRITORY - Van Diemen Gulf - Survey operations completed; tide gauges removed***Former Notice* - 706(T)/2021 is cancelled

Northern Territory Government

Cancel this notice on receipt.

Chart formerly affected - Aus 20 - Aus 720 - Aus 721 - Aus 722**900(T)/2021 AUSTRALIA - WESTERN AUSTRALIA - Barrow Island - Subsea operations northwestwards completed***Former Notice* - 966(T)/2020 is cancelled

Australian Maritime Safety Authority

Cancel this notice on receipt.

Chart formerly affected - Aus 328

901(T)/2021 AUSTRALIA - WESTERN AUSTRALIA - Barrow Island - Scientific instrument northwestwards
Technip FMC

A special light buoy, *Fl(5)Y.20s*, exists in position 19° 54'.20 S 114° 27'.48 E.

Chart temporarily affected - Aus 328

902(T)/2021 AUSTRALIA - WESTERN AUSTRALIA - Barrow Island - Scientific instruments northwestwards
Former Notice - 796(T)/2021 is cancelled
Technip FMC

Cancel this notice on receipt.

Chart formerly affected - Aus 328

903(T)/2021 AUSTRALIA - WESTERN AUSTRALIA - Carnarvon - Teggs Channel - Dredging operations completed
Former Notice - 497(T)/2020 is cancelled
Department of Transport WA

Cancel this notice on receipt.

Chart formerly affected - Aus 73

904(T)/2021 AUSTRALIA - WESTERN AUSTRALIA - Carnarvon - Teggs Channel - Shoaling removed
Former Notice - 561(T)/2019 is cancelled
Department of Transport WA

Cancel this notice on receipt.

Chart formerly affected - Aus 73

905(T)/2021 AUSTRALIA - WESTERN AUSTRALIA - Glomar Shoal - Mooring buoys northwestwards
Delmar Systems

8 yellow mooring buoys, *Fl.3s*, exist within 1M radius of 19° 26'.12 S 116° 28'.86 E. 2M clearance requested.

Chart temporarily affected - Aus 327

906(T)/2021 AUSTRALIA - WESTERN AUSTRALIA - Glomar Shoal - Survey operations northwestwards completed
Former Notice - 217(T)/2021 is cancelled
Santos

Cancel this notice on receipt.

Chart formerly affected - Aus 327

907(T)/2021 AUSTRALIA - WESTERN AUSTRALIA - INDIAN OCEAN - Perth to Cocos (Keeling) Islands - Survey operations completed
Former Notice - 879(T)/2020 is cancelled
Subcom

Cancel this notice on receipt.

Chart formerly affected - Aus 112 - Aus 606 - Aus 607 - Aus 754 - Aus 4060 (INT 60) - Aus 4070 (INT 70) - Aus 4071 (INT 71) - Aus 4708 (INT 708) - Aus 4709 (INT 709) - Aus 4714 (INT 714) - Aus 4725 (INT 725)

908(T)/2021 AUSTRALIA - WESTERN AUSTRALIA - Joseph Bonaparte Gulf - Subsea operations completed
Former Notice - 969(T)/2020 is cancelled
 Santos

Cancel this notice on receipt.

Chart formerly affected - Aus 318 - Aus 4721 (INT 721)

909(T)/2021 AUSTRALIA - WESTERN AUSTRALIA - Kwinana - Harbour works completed
Former Notice - 782(T)/2020 is cancelled
 Fremantle Ports Notice 11(T)/2020

Cancel this notice on receipt.

Chart formerly affected - Aus 117 - Aus 754 - Aus 755

910(T)/2021 AUSTRALIA - WESTERN AUSTRALIA - Montebello Islands - Subsea operations northwestwards
 Woodside Energy Ltd

On or about 21 October 2021, vessel *Skandi Hercules* will be conducting subsea operations in an area bounded by the following positions:

20° 10'.10 S 115° 02'.50 E
 20° 01'.65 S 115° 13'.85 E
 20° 00'.00 S 115° 10'.59 E
 20° 07'.51 S 115° 00'.00 E.

Mariners are advised to navigate with caution in the area.

Chart temporarily affected - Aus 328 - Aus 742

911(T)/2021 AUSTRALIA - WESTERN AUSTRALIA - Montebello Islands - Subsea operations northwestwards completed
Former Notice - 609(T)/2021 is cancelled
 Australian Maritime Safety Authority

Cancel this notice on receipt.

Chart formerly affected - Aus 328

912(T)/2021 AUSTRALIA - WESTERN AUSTRALIA - Rankin Bank - Drill rig eastwards
 Diamond Offshore

Drill rig *Ocean Apex* is conducting drilling operations in position 19° 43'.27 S 115° 51'.18 E.

Chart temporarily affected - Aus 327

913(T)/2021 AUSTRALIA - WESTERN AUSTRALIA - Rankin Bank - Drill rig eastwards moved
Former Notice - 822(T)/2021 is cancelled
 Diamond Offshore

Cancel this notice on receipt.

Chart formerly affected - Aus 327 - Aus 4723 (INT 723)

914(T)/2021 AUSTRALIA - SOUTH AUSTRALIA - Port Pirie - Harbour works completed
Former Notice - 620(T)/2016 is cancelled
 Department of Planning, Transport and Infrastructure SA Notice 12/2016

Cancel this notice on receipt.

Chart formerly affected - Aus 136

915(T)/2021 AUSTRALIA - VICTORIA - Golden Beach - Scientific instrument southeastwards recovered

Former Notice - 115(T)/2020 is cancelled
 Metocean Services International

Cancel this notice on receipt.

Chart formerly affected - Aus 357

916(T)/2021 AUSTRALIA - VICTORIA - Port Campbell - Survey operations completed southwestwards

Former Notice - 348(T)/2021 is cancelled
 MMA Offshore

Cancel this notice on receipt.

Chart formerly affected - Aus 349 - Aus 787

917(T)/2021 AUSTRALIA - VICTORIA - Seal Islands - Scientific instruments eastwards

Former Notice - 792(T)/2020 is cancelled
 Star of the South Wind Farm

Scientific instruments exist as follows:

<i>Position</i>	<i>Depth below surface</i>
38° 42'.15 S 147° 06'.10 E	12m
38° 50'.20 S 146° 45'.98 E	12m
38° 50'.83 S 146° 55'.99 E	12m
38° 51'.11 S 146° 53'.94 E	12m
38° 51'.43 S 146° 55'.07 E	12m
38° 52'.35 S 146° 55'.28 E	12m
38° 58'.73 S 147° 03'.30 E	32m
39° 04'.37 S 147° 14'.28 E	32m.

Chart temporarily affected - Aus 181 - Aus 357 - Aus 802

918(T)/2021 AUSTRALIA - BASS STRAIT - Survey operations completed

Former Notice - 468(T)/2020 is cancelled
 Beach Energy Limited

Cancel this notice on receipt.

Chart formerly affected - Aus 487 - Aus 4644 (INT 644)

919(T)/2021 AUSTRALIA - TASMANIA - Burnie - Survey operations completed

Former Notice - 81(T)/2020 is cancelled
 Fugro

Cancel this notice on receipt.

Chart formerly affected - Aus 163 - Aus 799

920(T)/2021 AUSTRALIA - TASMANIA - Spring Bay - Marine farm; nav aids

Marine and Safety Tasmania Notices M176/2018, M274(T)/2021

A marine farm, marked by buoys, exists in an area bounded by the following:

<i>Position</i>	<i>Remarks</i>
42° 32'.02 S 147° 55'.43 E	special buoy
42° 32'.02 S 147° 55'.36 E	special buoy
42° 32'.04 S 147° 55'.33 E	starboard lateral light buoy, <i>Fl.G.5s</i>
42° 32'.15 S 147° 55'.39 E	starboard lateral light buoy, <i>Fl.G.5s</i>
42° 32'.14 S 147° 55'.46 E	special buoy.

Chart temporarily affected - Aus 797

921(T)/2021 AUSTRALIA - TASMANIA - Storm Bay - Scientific instruments recovered

Former Notice - 353(T)/2021 is cancelled

Maritime and Safety Tasmania Notice M266(T)/2021

Cancel this notice on receipt.

Chart formerly affected - Aus 796**922(T)/2021 SOLOMON ISLANDS - Guadalcanal Island - Taivu Point to Sealark Reef - Light beacons unlit**

Solomon Islands Maritime Authority Notice 12/2021

The following light beacons are unlit;

<i>Position</i>	<i>Remarks</i>
9° 24'.55 S 160° 21'.01 E	<i>LFl(2)20s 10m 5M</i>
9° 19'.45 S 160° 19'.85 E	<i>Fl.5s 10m 10M.</i>

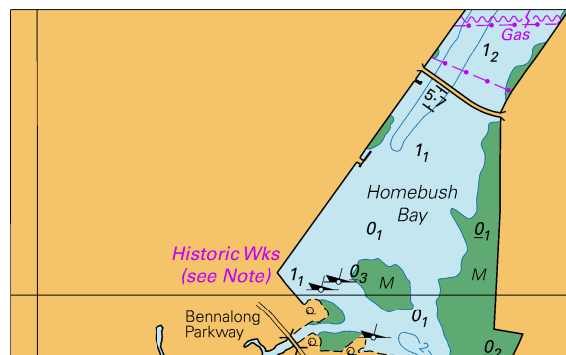
Chart temporarily affected - Aus 4623 (INT 623) - Aus 4634 (INT 634) - SLB 201 - SLB 304

II

HYDROGRAPHIC REPORTS

NIL

To accompany Australian Notice to Mariners 867/2021

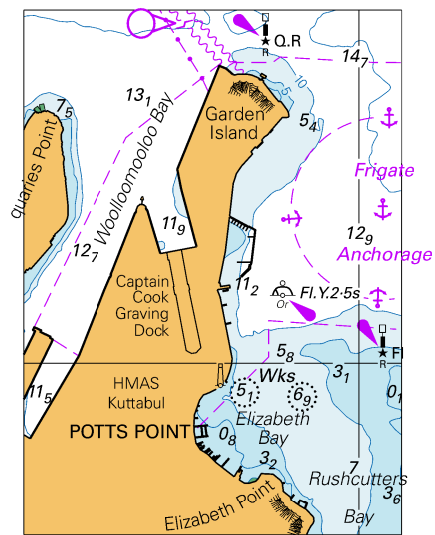


© Commonwealth of Australia 2021

Block A for chart Aus 200

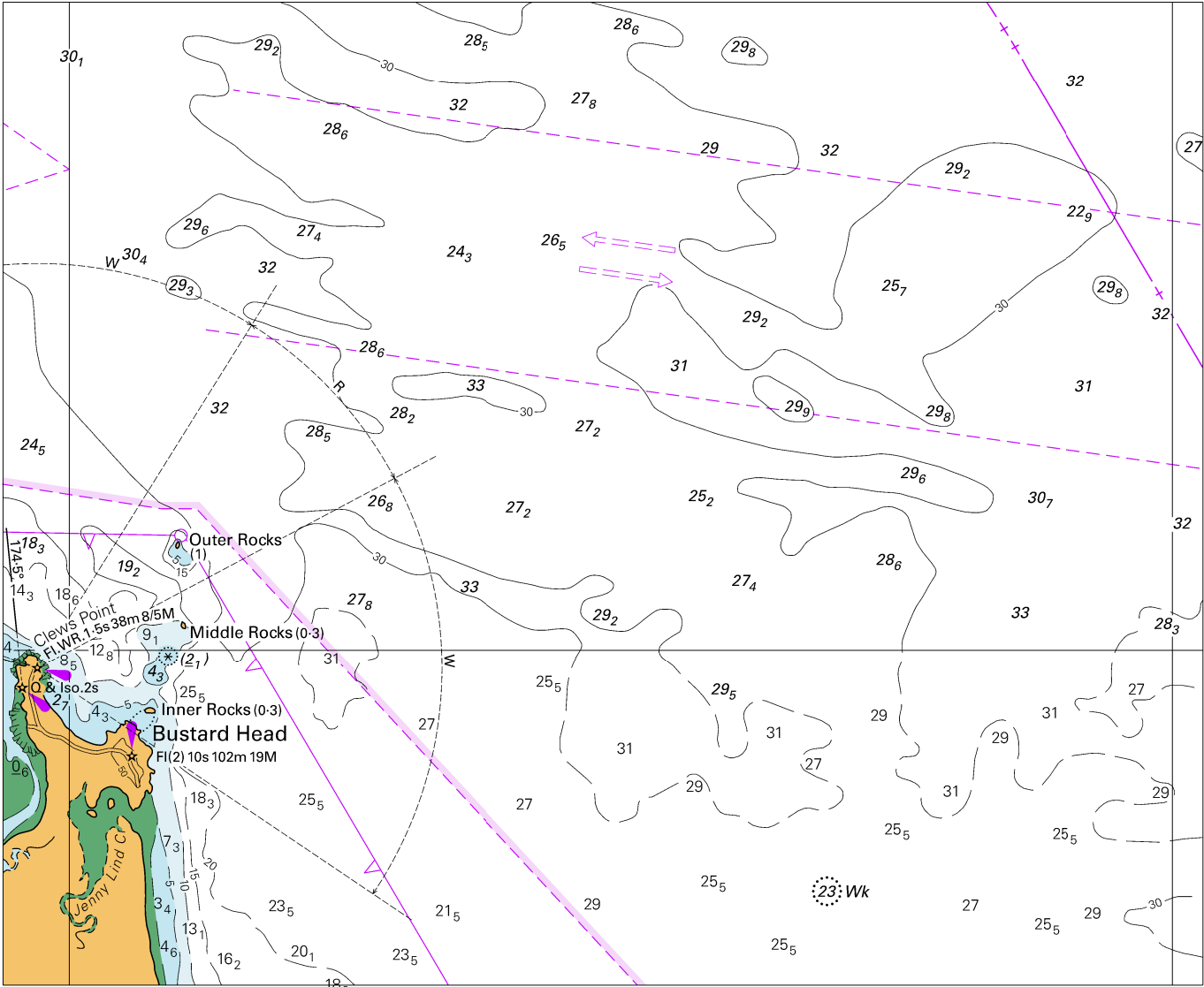
(74.8 x 46.5mm)

To accompany Australian Notice to Mariners 868/2021



© Commonwealth of Australia 2021
Block B for chart Aus 200 (50.0 x 69.4mm)

To accompany Australian Notice to Mariners 869/2021



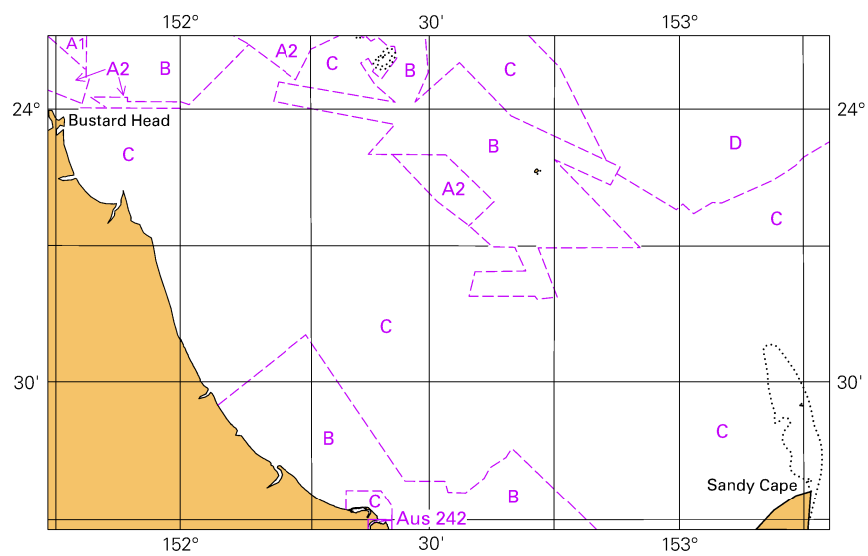
Block for chart Aus 818

© Commonwealth of Australia 2021

(179.5 x 147.3mm)

To accompany Australian Notice to Mariners 869/2021

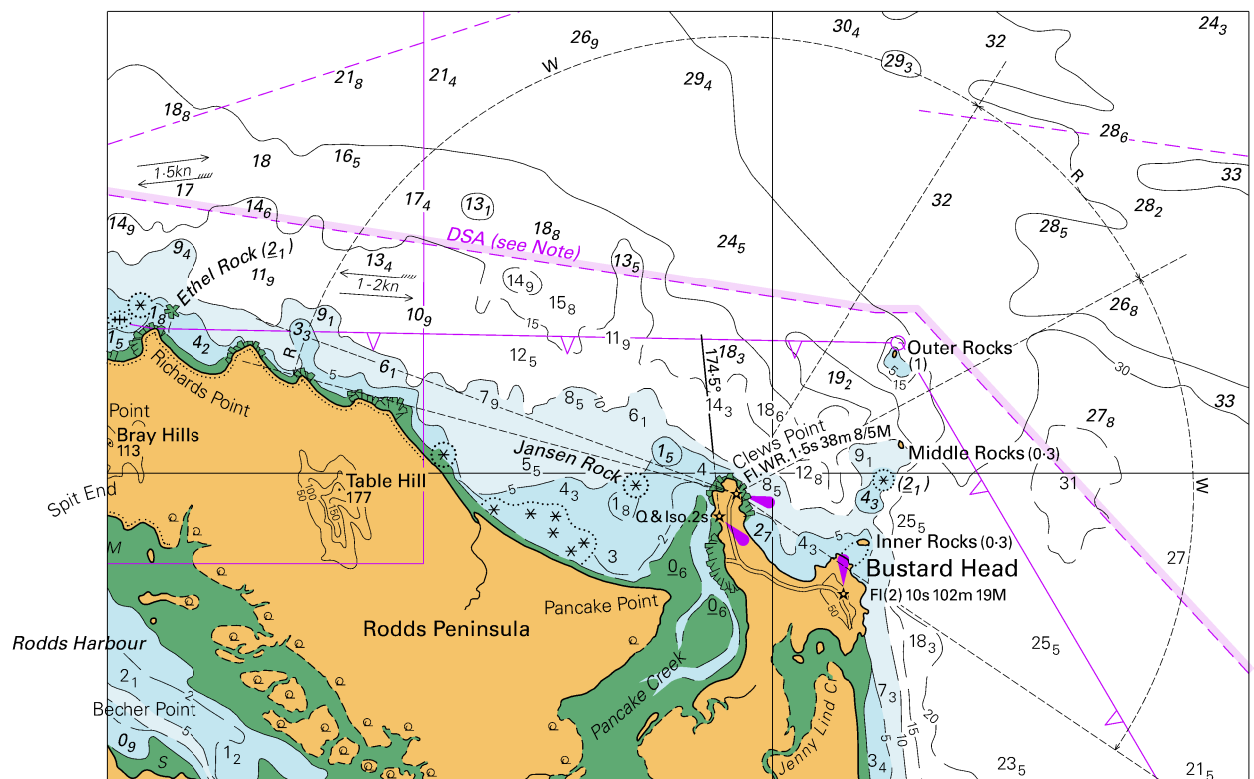
Zone of Confidence (ZOC) Diagram



Block for chart Aus 818 © Commonwealth of Australia 2021

(103.1 x 65.6mm)

To accompany Australian Notice to Mariners 869/2021

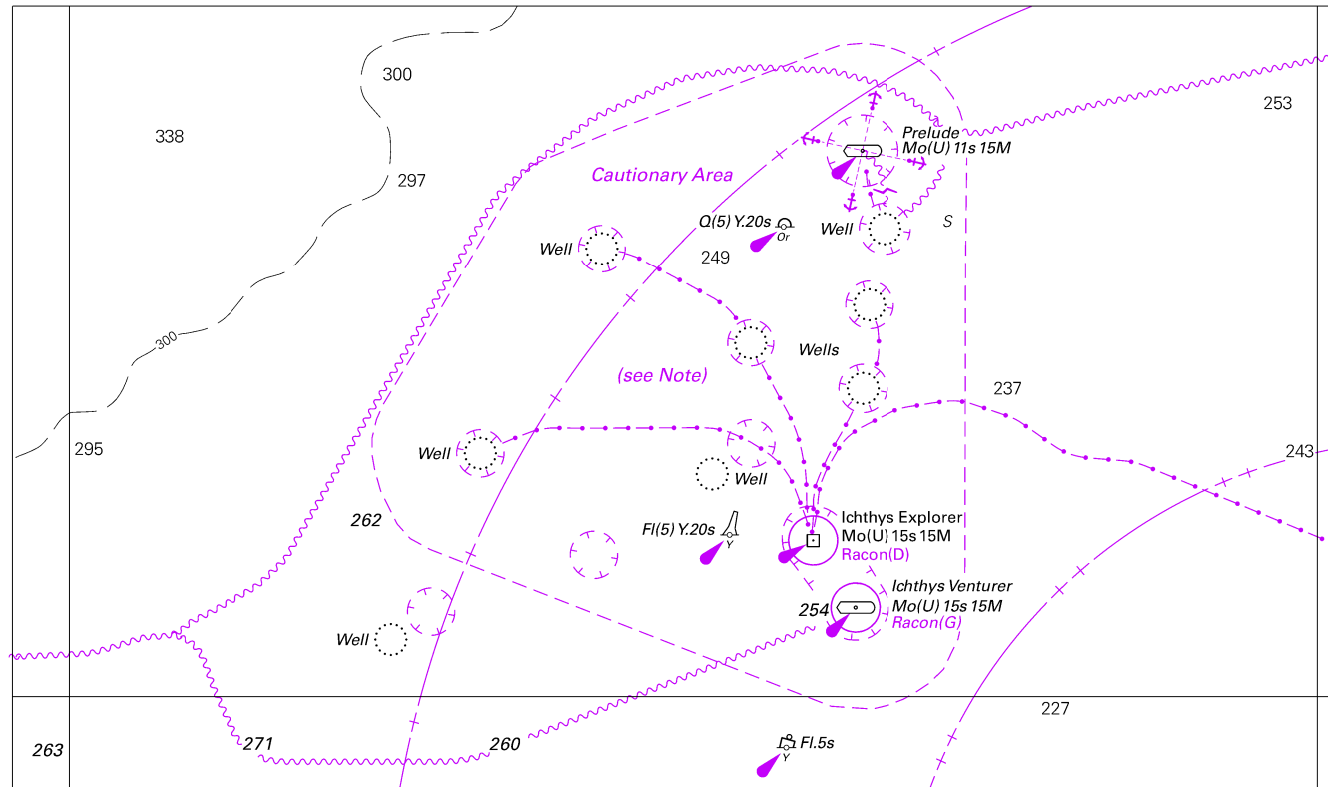


Block for chart Aus 819

© Commonwealth of Australia 2021

(151.0 x 101.6mm)

To accompany Australian Notice to Mariners 876/2021

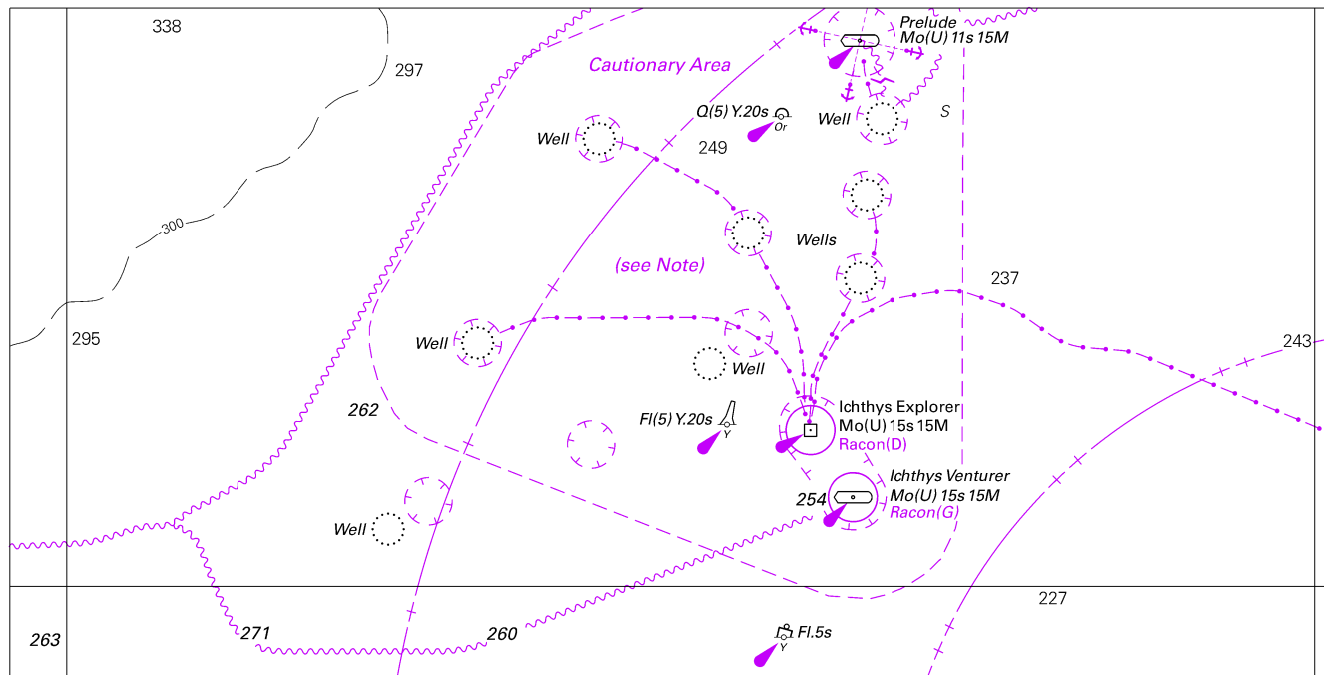


Block for chart Aus 319

© Commonwealth of Australia 2021

(176.3 x 103.5mm)

To accompany Australian Notice to Mariners 876/2021

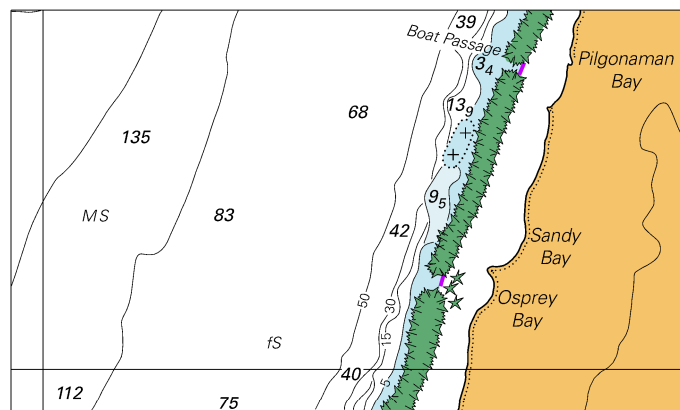


Block for chart Aus 320

© Commonwealth of Australia 2021

(176.3 x 88.7mm)

To accompany Australian Notice to Mariners 878/2021



© Commonwealth of Australia 2021

Block for chart Aus 745

(89.8 x 53.0mm)