

To accompany Australian Notice to Mariners 186/2021

ELECTRONIC NAVIGATIONAL CHART (ENC)
Larger scale ENC content exists in this area.
When using electronic navigation systems,
certain vessels (e.g. restricted by depth or
size) may benefit from the additional level of
detail shown in the largest scale ENC
product available.

Note for chart Aus 25

To accompany Australian Notice to Mariners 189/2021

ELECTRONIC NAVIGATIONAL CHART (ENC)
Larger scale ENC content exists in this area.
When using electronic navigation systems,
certain vessels (e.g. restricted by depth or
size) may benefit from the additional level of
detail shown in the largest scale ENC
product available.

Note for chart Aus 753

To accompany Australian Notice to Mariners 191/2021

ELECTRONIC NAVIGATIONAL CHART (ENC)
Larger scale ENC content exists in this area.
When using electronic navigation systems,
certain vessels (e.g. restricted by depth or
size) may benefit from the additional level of
detail shown in the largest scale ENC
product available.

Note for chart Aus 348

To accompany Australian Notice to Mariners 186/2021

ELECTRONIC NAVIGATIONAL CHART (ENC)
Larger scale ENC content exists in this area.
When using electronic navigation systems,
certain vessels (e.g. restricted by depth or
size) may benefit from the additional level of
detail shown in the largest scale ENC
product available.

Note for chart Aus 26

To accompany Australian Notice to Mariners 189/2021

ELECTRONIC NAVIGATIONAL CHART (ENC)
Larger scale ENC content exists in this area.
When using electronic navigation systems,
certain vessels (e.g. restricted by depth or
size) may benefit from the additional level of
detail shown in the largest scale ENC
product available.


Note for chart Aus 754

To accompany Australian Notice to Mariners 193/2021

ELECTRONIC NAVIGATIONAL CHART (ENC)
Larger scale ENC content exists in this area.
When using electronic navigation systems,
certain vessels (e.g. restricted by depth or
size) may benefit from the additional level of
detail shown in the largest scale ENC
product available.

Note for chart Aus 151

To accompany Australian Notice to Mariners 186/2021



Tidal streams referred to HW at DARWIN

Hours	Geographical Position	A 12°28.1' S 130 51.2 E	B 12°28.3' S 130 48.3 E	C 12°25.7' S 130 46.9 E	D 12°21.2' S 130 43.8 E	
Before High Water (6 5 4 3 2 1)	Directions of streams (degrees) Rates at spring tides (knots) Rates at neap tides (knots)	- 6	057 0.3 0.1	138 0.8 0.3	335 0.5 0.2	290 0.6 0.3
		- 5	048 0.6 0.3	147 1.5 0.6	169 0.6 0.3	175 0.4 0.2
		- 4	044 0.8 0.3	153 1.9 0.8	160 1.9 0.8	153 1.3 0.5
		- 3	039 0.8 0.3	153 1.6 0.7	161 3.0 1.2	134 1.6 0.7
		- 2	033 0.6 0.2	150 0.7 0.3	155 2.6 1.1	131 1.5 0.6
		- 1	010 0.2 0.1	333 0.3 0.1	140 1.5 0.6	129 1.3 0.5
After High Water (1 2 3 4 5 6)		0	236 0.3 0.1	330 1.4 0.6	136 0.4 0.2	126 0.8 0.3
		+1	226 0.7 0.3	327 2.1 0.9	340 0.9 0.4	343 0.3 0.1
		+2	224 1.0 0.4	323 1.8 0.8	332 2.7 1.1	328 1.3 0.5
		+3	222 0.9 0.4	326 1.2 0.5	334 3.2 1.3	324 1.7 0.7
		+4	218 0.6 0.2	333 0.6 0.2	337 2.5 1.1	313 1.5 0.6
		+5	219 0.2 0.1	109 0.2 0.1	343 1.7 0.7	310 1.3 0.5
+6		070 0.2 0.1	139 0.8 0.3	331 0.7 0.3	299 0.8 0.3	

Tidal Levels referred to Datum of Soundings

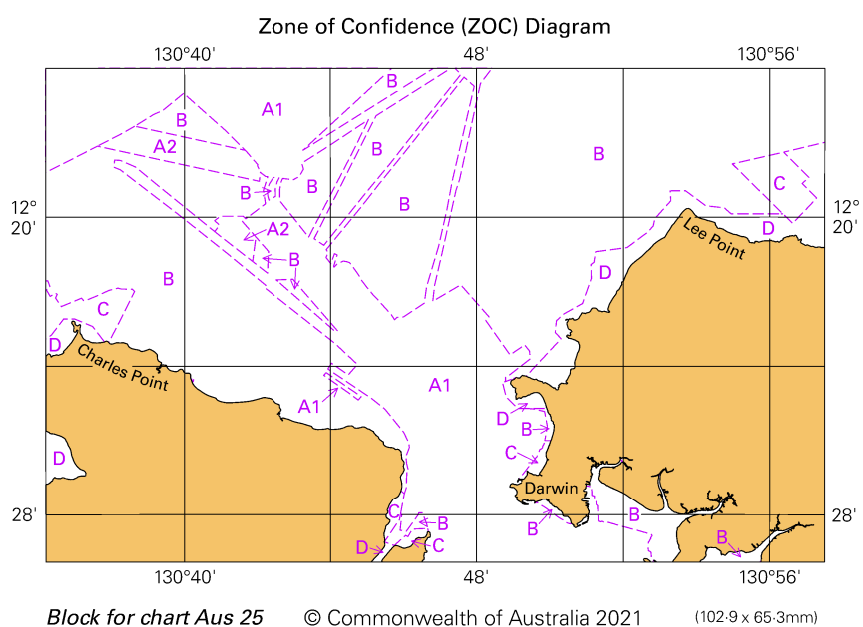
Place	Lat S	Long E	Heights in metres above datum					
			HAT	MHWS	MHWN	MSL	MLWN	MLWS
Darwin	12° 28'	130° 51'	8.1	7.0	5.1	4.2	3.3	1.4
Nightcliff	12 23	130 50	7.5	6.6	4.9	3.9	3.0	1.3
Tapa Bay	12 27	130 36	7.1	6.2	4.6	3.8	2.9	1.3

Block for chart Aus 25

© Commonwealth of Australia 2021

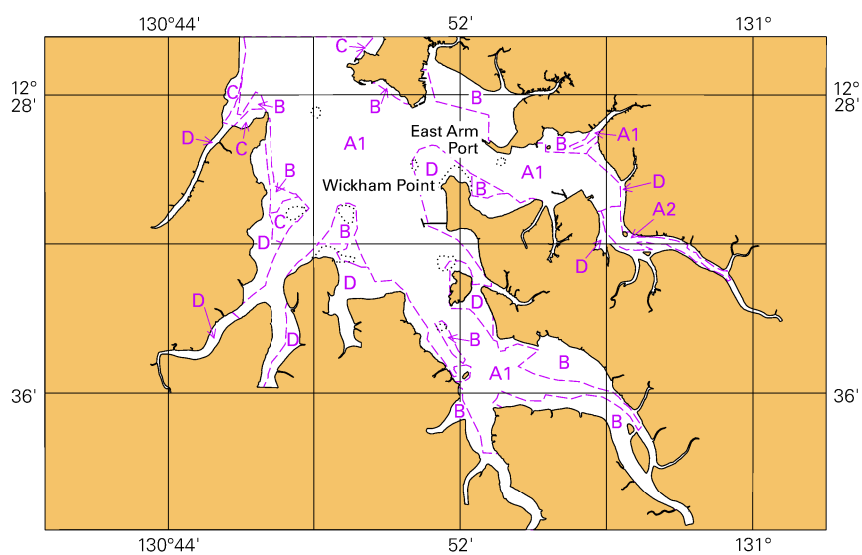
(153.5 x 85.2mm)

To accompany Australian Notice to Mariners 186/2021



To accompany Australian Notice to Mariners 186/2021

Zone of Confidence (ZOC) Diagram

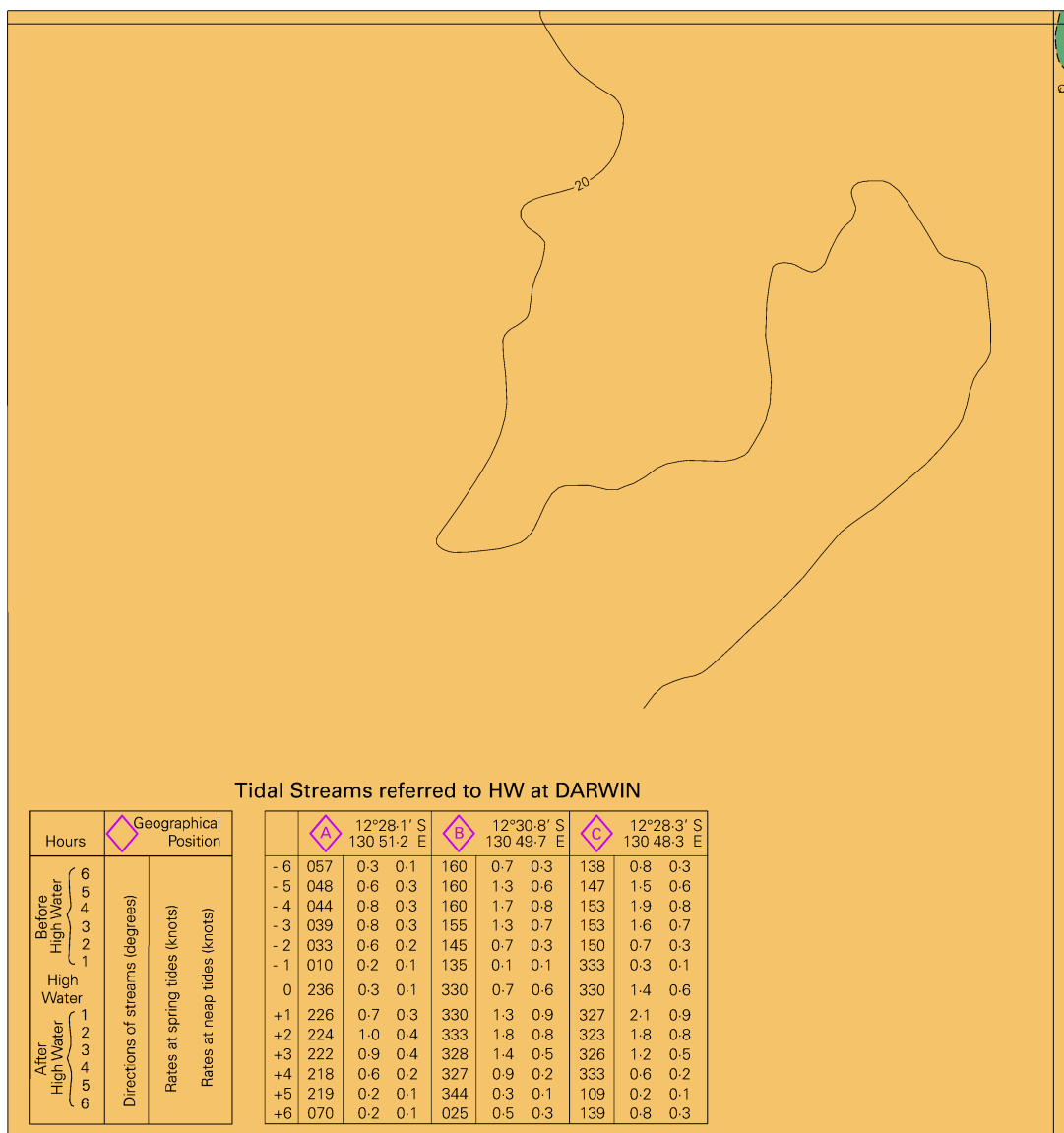


Block for chart Aus 26

© Commonwealth of Australia 2021

(103-2x 65-2mm)

To accompany Australian Notice to Mariners 186/2021

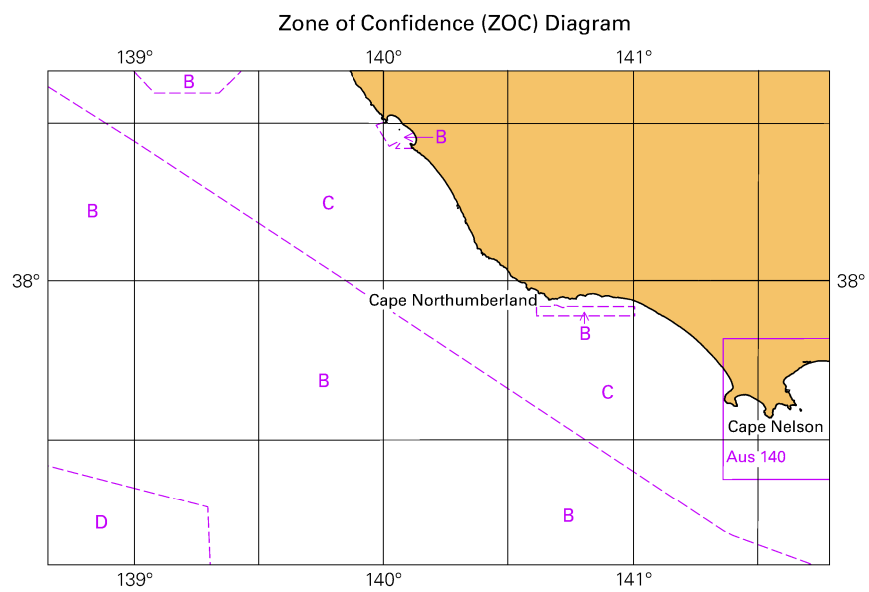


Block for chart Aus 26

© Commonwealth of Australia 2021

(143.2 x 151.6mm)

To accompany Australian Notice to Mariners 191/2021

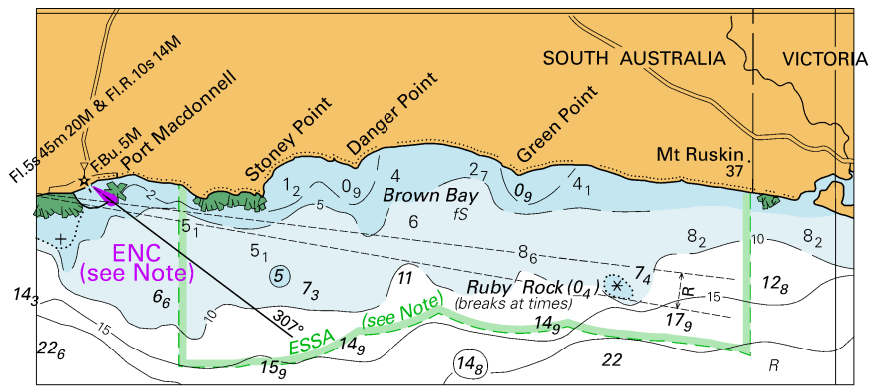


Block for chart 348

© Commonwealth of Australia 2021

(103.3 x 65.3mm)

To accompany Australian Notice to Mariners 191/2021

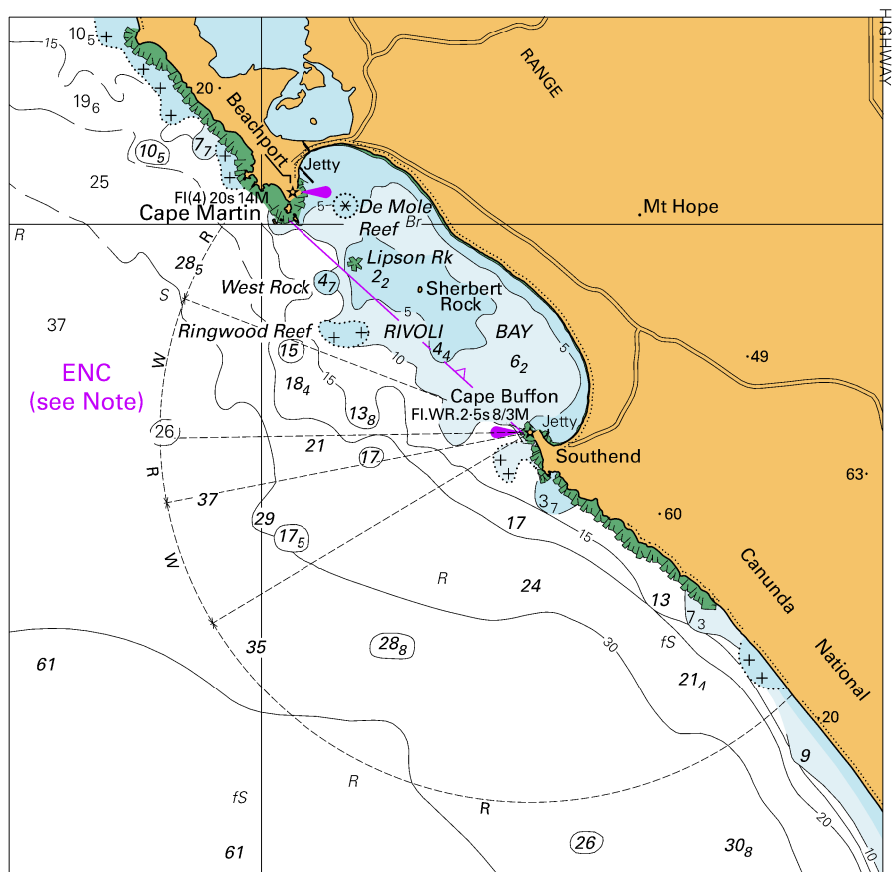


© Commonwealth of Australia 2021

Block B for chart Aus 348

(108.1 x 49.8mm)

To accompany Australian Notice to Mariners 191/2021

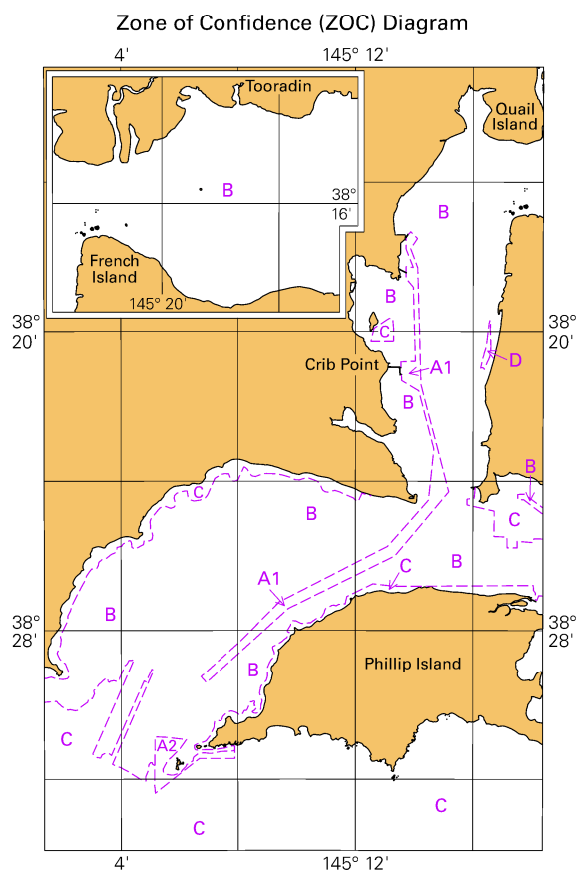


Block A for chart Aus 348

© Commonwealth of Australia 2021

(115.5 x 113.4mm)

To accompany Australian Notice to Mariners 193/2021



Block for chart Aus 151

(66.0 x 103.6mm)

© Commonwealth of Australia 2021