

To accompany Australian Notice to Mariners 137/2021

CLOSED WATERS

All waterways west of the Silverwater
Bridge are closed to all vessels other than
authorised vessels.

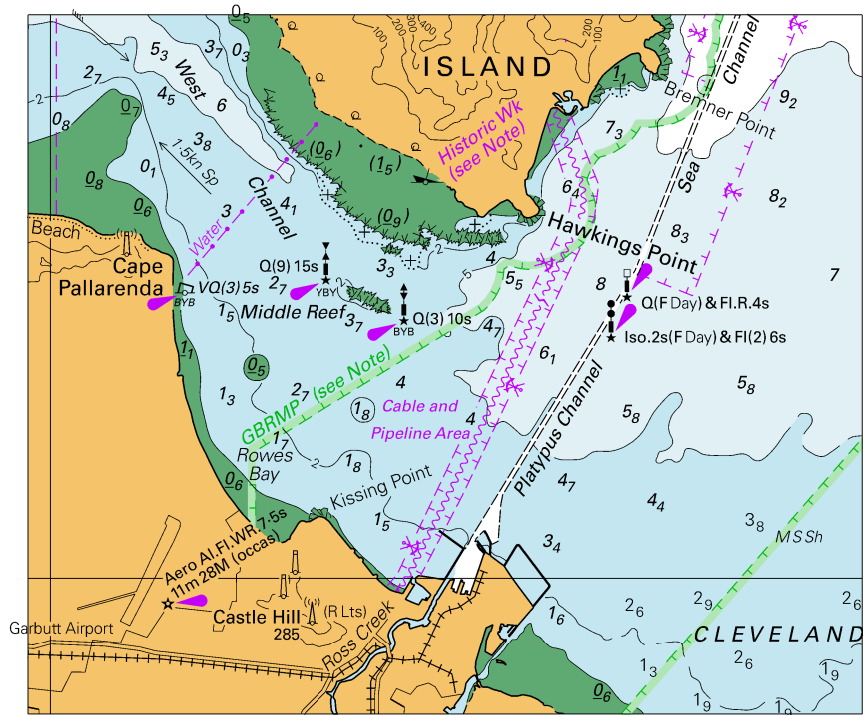
Note for chart Aus 200



© Commonwealth of Australia 2021

(186.8 x 136.0mm)

To accompany Australian Notice to Mariners 144/2021



Block for chart Aus 827 © Commonwealth of Australia 2021

(110.1 x 92.4mm)