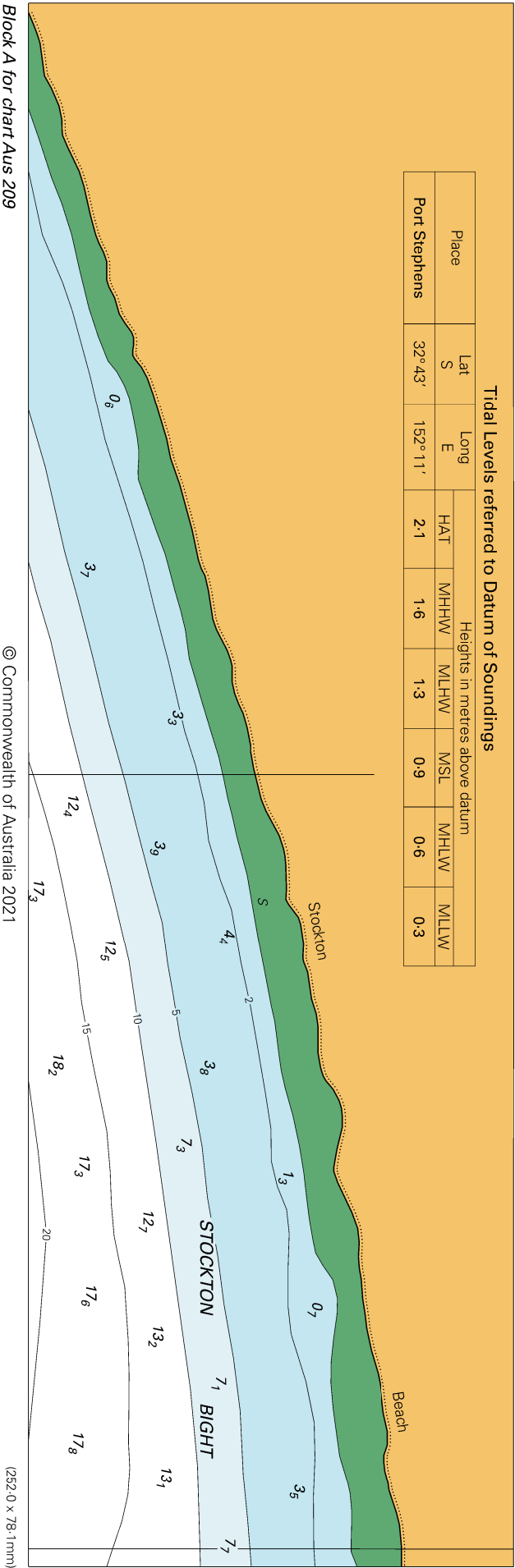
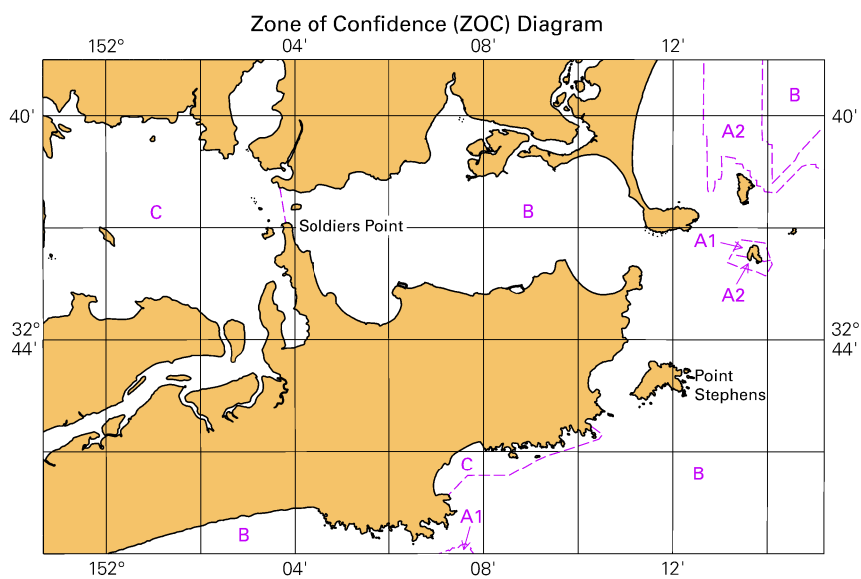


To accompany Australian Notice to Mariners 926/2021

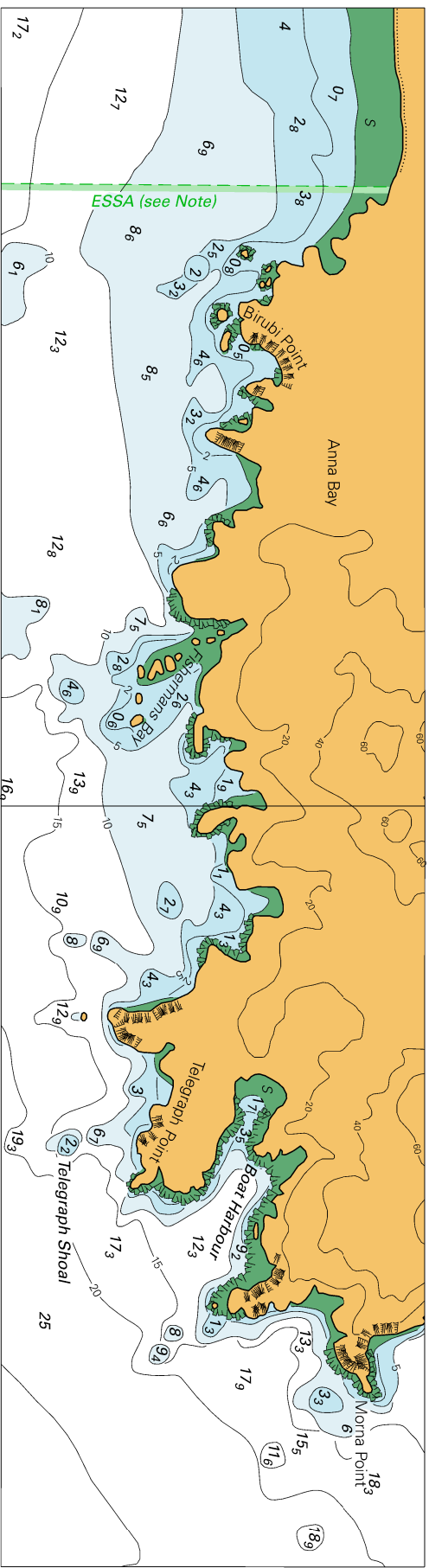
Tidal Levels referred to Datum of Soundings								
Place	Lat	Long	Heights in metres above datum					
			HAT	MHHW	MLHW	MSL	MHLW	MLLW
Port Stephens	32° 43' S	152° 11' E	2.1	1.6	1.3	0.9	0.6	0.3



To accompany Australian Notice to Mariners 926/2021



To accompany Australian Notice to Mariners 926/2021

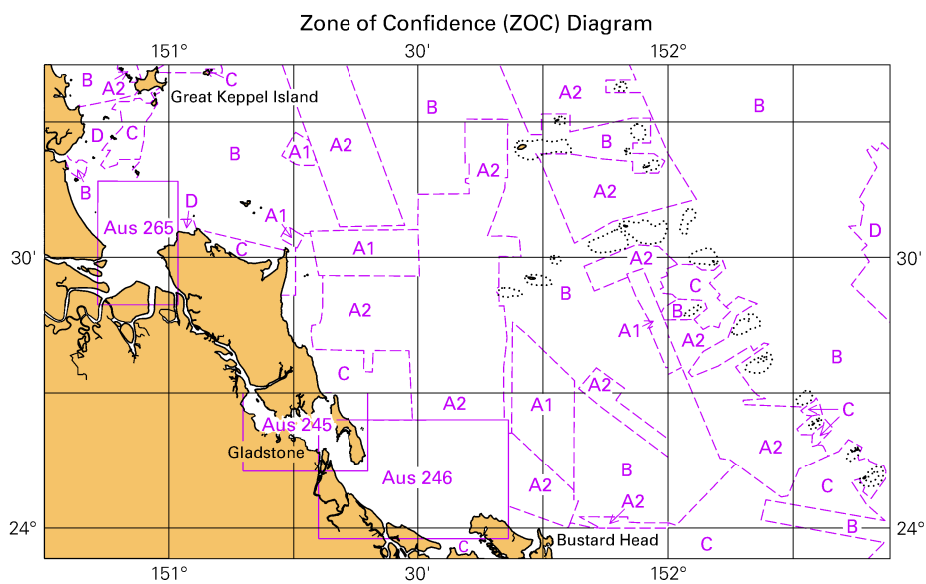


Block B for chart Aus 209

© Commonwealth of Australia 2021

(238.5 x 64.8mm)

To accompany Australian Notice to Mariners 928/2021

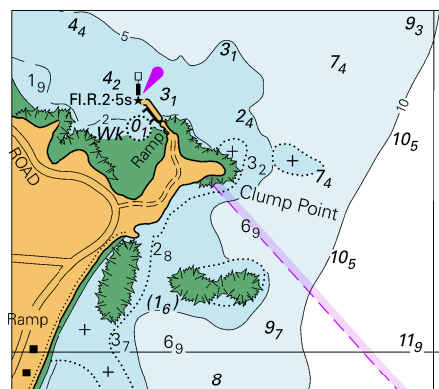


© Commonwealth of Australia 2021

Block for chart Aus 819

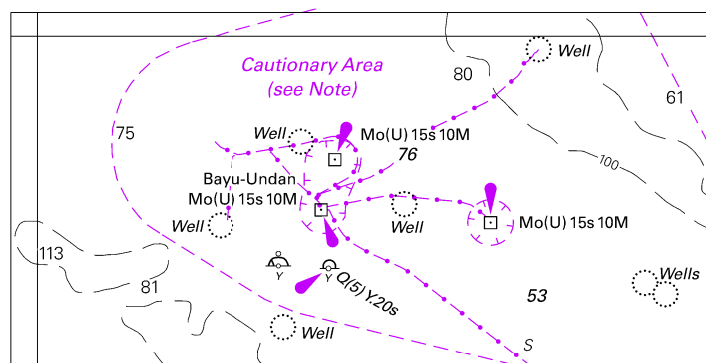
(111.7 x 65.2mm)

To accompany Australian Notice to Mariners 929/2021



© Commonwealth of Australia 2021
Block for chart Aus 258 (57.8 x 50.4mm)

To accompany Australian Notice to Mariners 936/2021

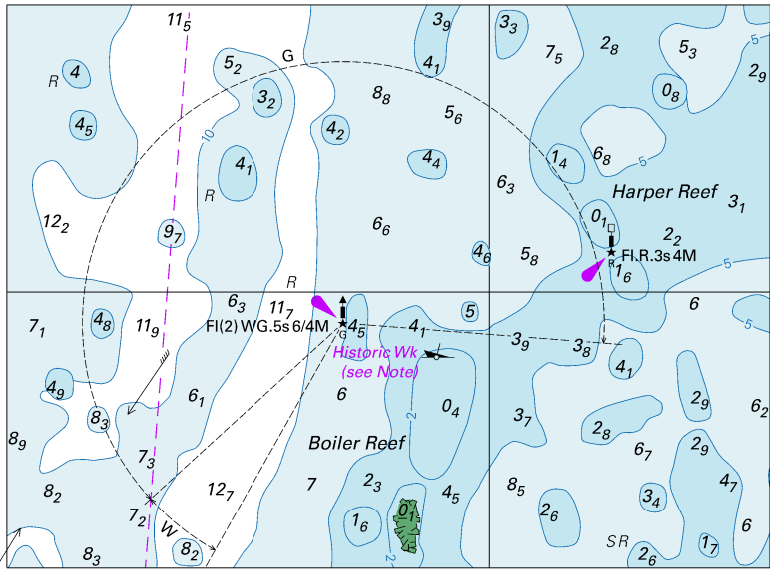


© Commonwealth of Australia 2021

Block for chart Aus 312

(92.9 x 46.6mm)

To accompany Australian Notice to Mariners 938/2021



© Commonwealth of Australia 2021

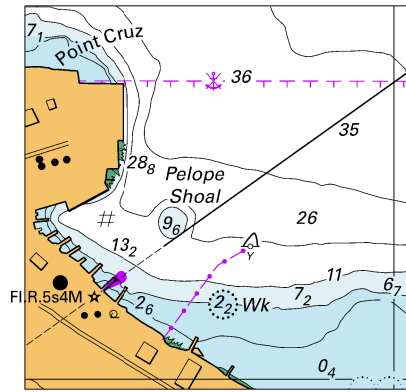
Block for chart Aus 84

(100.9 x 74.4mm)

Block A for chart SLB 101

(101.0 x 190.6mm)

To accompany Australian Notice to Mariners 943/2021



© Commonwealth of Australia 2021
Block B for chart SLB 101 (51.2 x 50.6mm)