

To accompany Australian Notice to Mariners 729/2021

ELECTRONIC NAVIGATIONAL CHART (ENC)

Larger scale ENC content exists in this area. When using electronic navigation systems, certain vessels (e.g. restricted by depth or size) may benefit from the additional level of detail shown in the largest scale ENC product available.

Note for chart Aus 815

To accompany Australian Notice to Mariners 729/2021

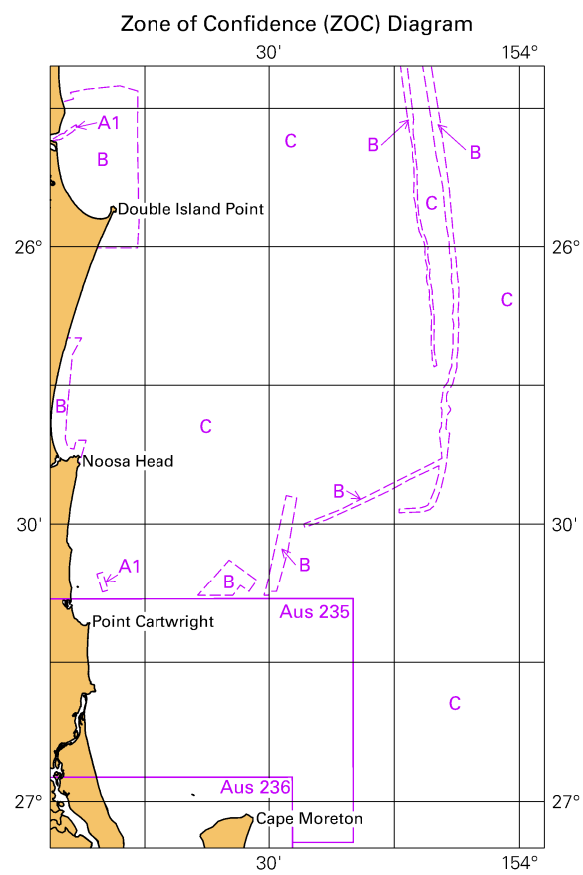
ELECTRONIC NAVIGATIONAL CHART (ENC)

Larger scale ENC content exists in this area. When using electronic navigation systems, certain vessels (e.g. restricted by depth or size) may benefit from the additional level of detail shown in the largest scale ENC product available.

Note for chart Aus 816

Port Kembla, NSW (34° 28'S, 150° 54'E)	
UN/LOCODE: AU PKL	
Paper charts:	Aus 195, 808
AusENC cells:	AU5PKL01, AU435150
Security Regulated Port:	Yes
Port Authority	Port Authority of NSW
Website:	www.portauthoritynsw.com.au
Email:	portkemblavts@portauthoritynsw.com.au
Telephone:	+61 2 4575 0100
Vessel Traffic Information Centre	
Call:	"Port Kembla VTS"
Telephone:	+61 2 4275 0197
Pilotage:	Compulsory
Pilot Boarding Grounds:	(Inner) 34° 25.15'S, 150° 56.85'E (Outer) 34° 24.18'S, 150° 57.62'E
Communication:	"Port Kembla VTS"
Call up, emergencies:	VHF Channel 11, 16
Port Operations:	VHF Channel 08
Notice of ETA:	48 hours notification required - booking must be confirmed 24 hours in advance
For more information:	https://www.portauthoritynsw.com.au/port-kembla/

To accompany Australian Notice to Mariners 729/2021

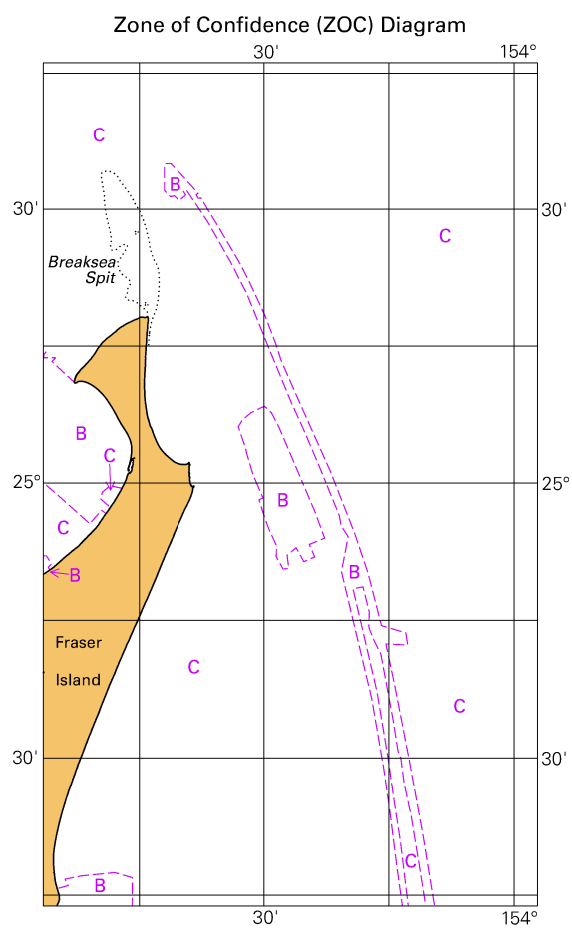


© Commonwealth of Australia 2021

Block for chart Aus 815

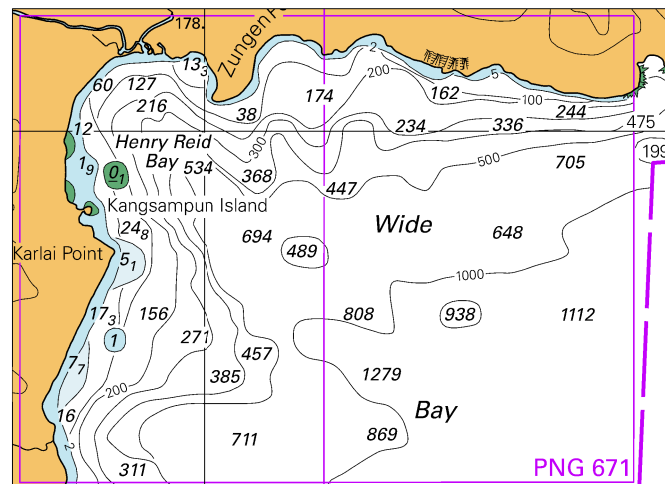
(65.4 x 103.4mm)

To accompany Australian Notice to Mariners 729/2021



© Commonwealth of Australia 2021
Block for chart Aus 816 (65.4 x 111.6mm)

To accompany Australian Notice to Mariners 734/2021

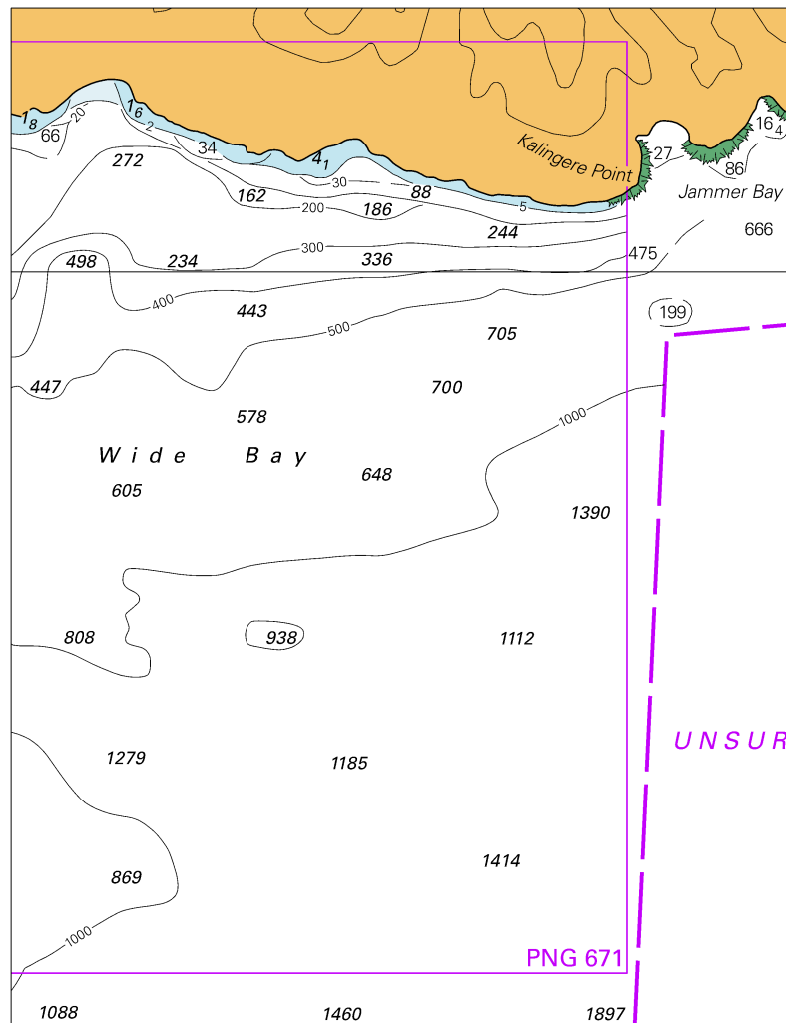


© Commonwealth of Australia 2021

Block for chart PNG 397

(87.7 x 62.9mm)

To accompany Australian Notice to Mariners 734/2021



© Commonwealth of Australia 2021

Block for chart PNG 554

(103.3 x 134.6mm)