

To accompany Australian Notice to Mariners 636/2021

ESTUARY AND RIVER ENTRANCES

The crossing of coastal bars and entry to rivers and estuaries is potentially dangerous. Bars and entrances are dynamic in nature, hence the depth and preferred approach may vary. Leading beacons and other navigational aids may not always indicate the best approach. If mariners are unsure of the condition at a particular bar or entrance, local information should be sought prior to crossing.

Note for chart Aus 797

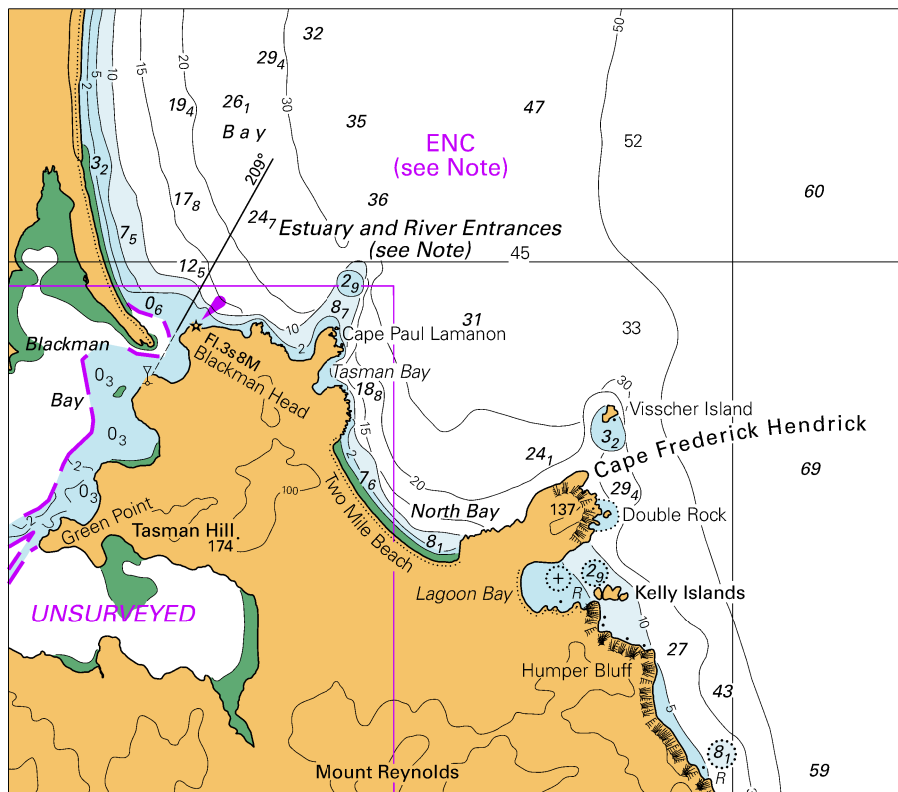
To accompany Australian Notice to Mariners 636/2021

ELECTRONIC NAVIGATIONAL CHART (ENC)

Larger scale ENC content exists in this area. When using electronic navigation systems, certain vessels (e.g. restricted by depth or size) may benefit from the additional level of detail shown in the largest scale ENC product available.

Note for chart Aus 797

To accompany Australian Notice to Mariners 636/2021

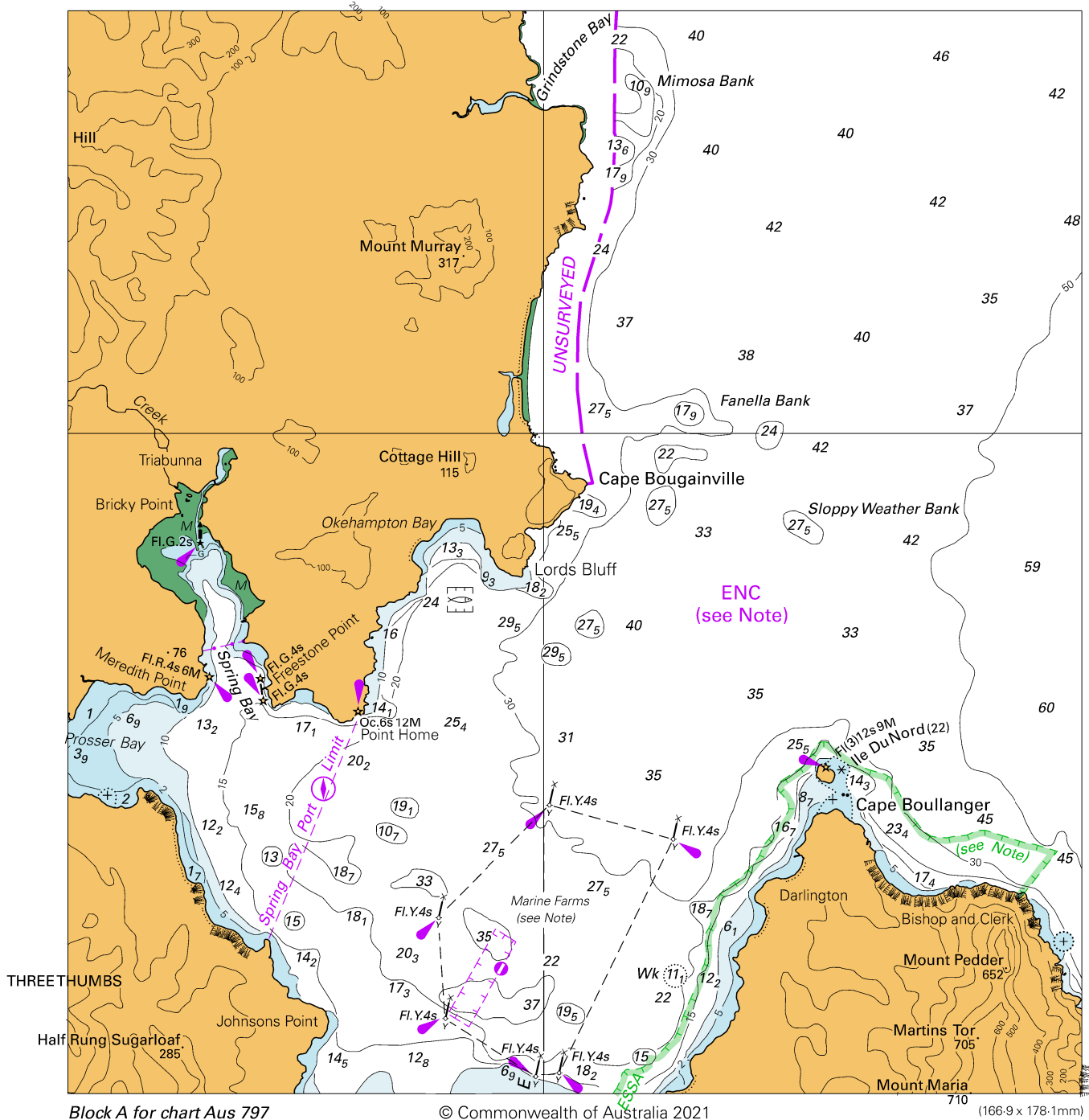


© Commonwealth of Australia 2021

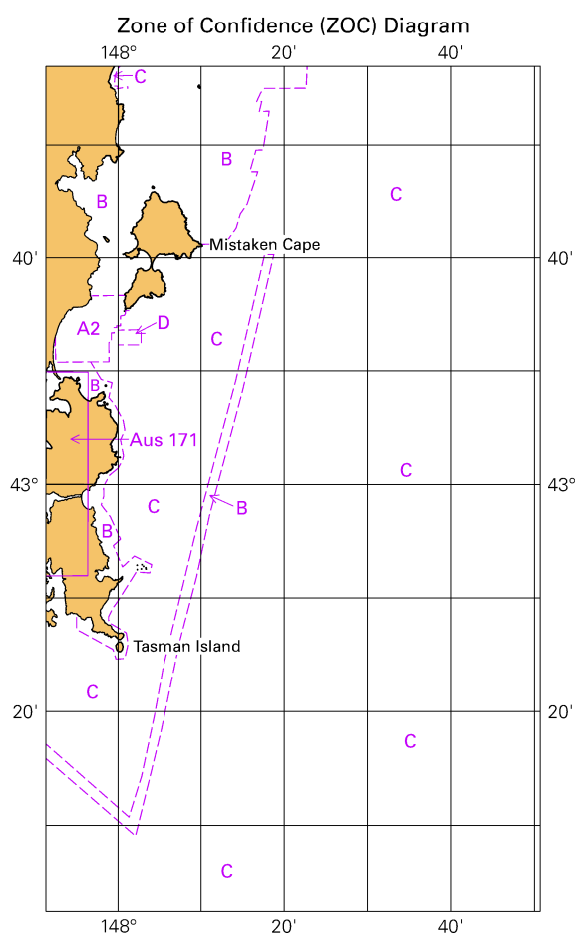
Block B for chart Aus 797

(119.2 x 104.1mm)

To accompany Australian Notice to Mariners 636/2021



To accompany Australian Notice to Mariners 636/2021



© Commonwealth of Australia 2021

Block for chart Aus 797

(65.4 x 111.7mm)