

*To accompany Australian Notice to Mariners 364/2021*

DREDGED AREAS

Depths in dredged areas, although generally maintained, may be less than charted. For the latest information, consult the Harbour Master.

*Note for chart Aus 112*

*To accompany Australian Notice to Mariners 364/2021*

INNER HARBOUR - TIDAL STREAMS

Tidal Streams in the Inner Harbour are often masked by water from the Swan River. Refer to Australia Pilot Vol I NP 13.

*Note for chart Aus 112*

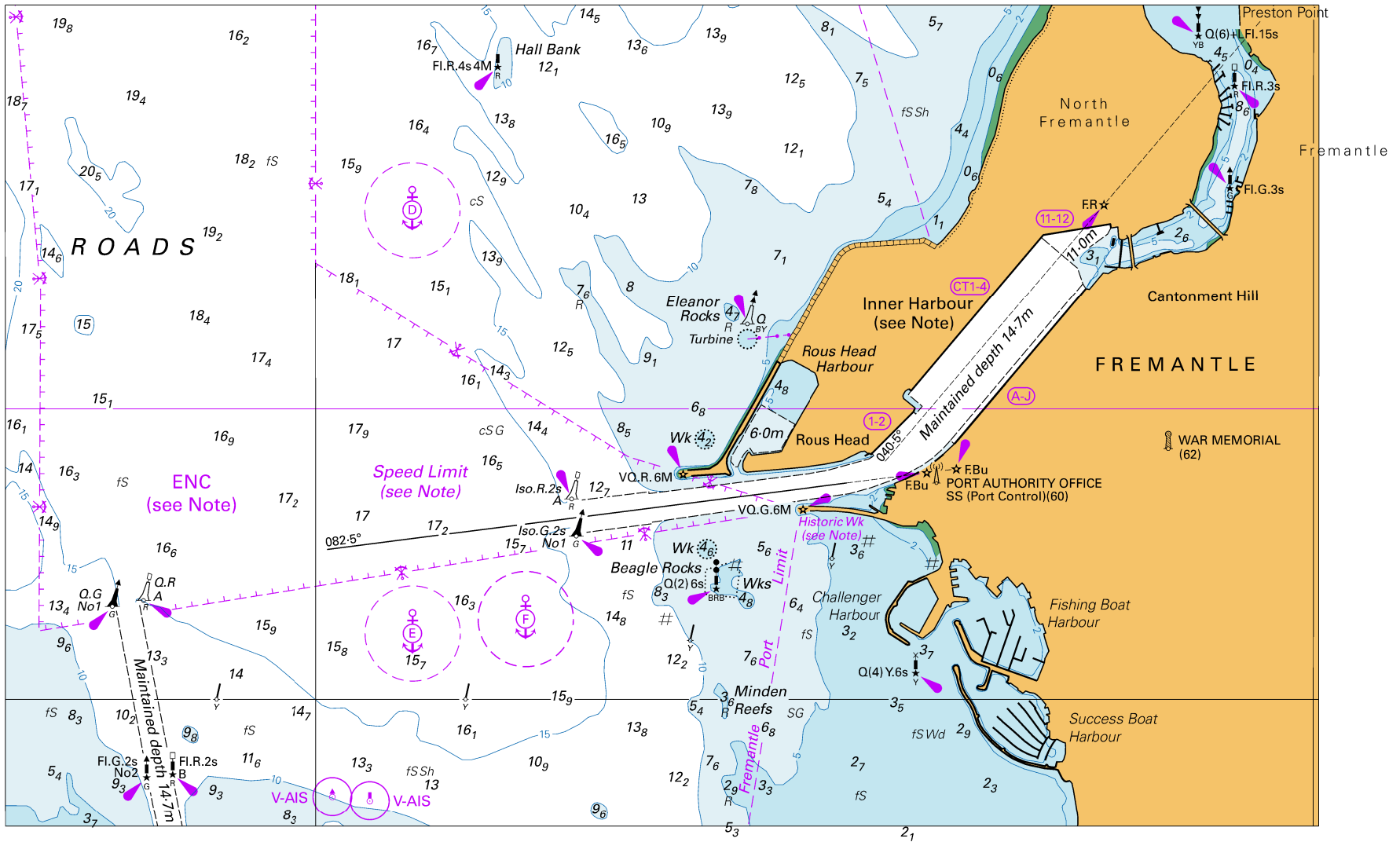
*To accompany Australian Notice to Mariners 364/2021*

ELECTRONIC NAVIGATIONAL CHART (ENC)

Larger scale ENC content exists in this area. When using electronic navigation systems, certain vessels (e.g. restricted by depth or size) may benefit from the additional level of detail shown in the largest scale ENC product available.

*Note for chart Aus 112*

To accompany Australian Notice to Mariners 364/2021



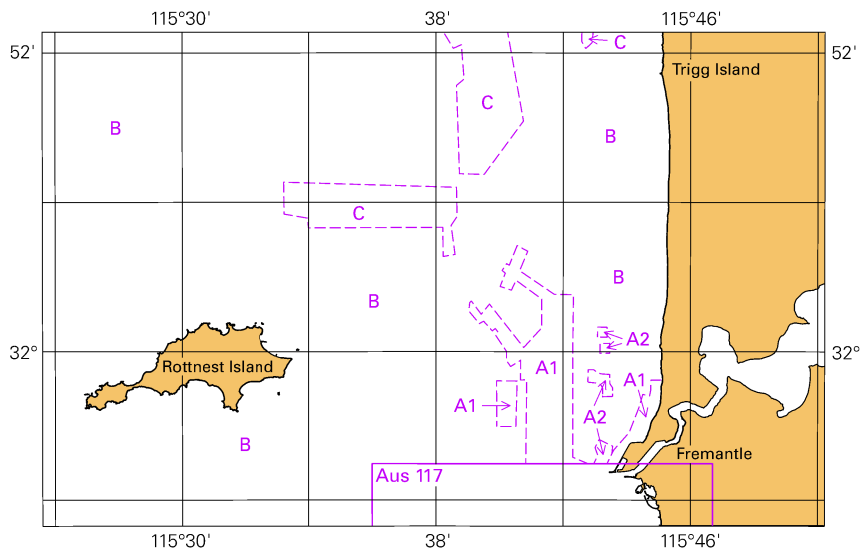
Block for chart Aus 112

© Commonwealth of Australia 2021

(221.0x 138.3mm)

To accompany Australian Notice to Mariners 364/2021

Zone of Confidence (ZOC) Diagram



Block for chart Aus 112

(103.3 x 65.3mm)

© Commonwealth of Australia 2021