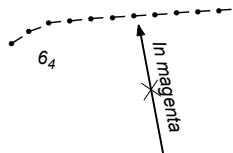


ENC  
(see Note) ← *In magenta*



151°20'E



22

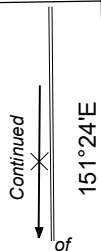
of

33°39'90"S

33°25'76"S

Creek

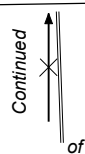
Erina



151°24'E

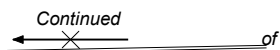
33°32'S

22



ENC  
(see Note) ← *In magenta*

33



of  
151°24'E



The diagram shows a control loop with a forward path containing a zero (represented by an 'X' on a line with an arrow pointing right) and a feedback path containing a pole (represented by an 'X' on a line with an arrow pointing left). The text 'ZOC' is placed between the two paths.

33°28'S

of

*of*

Continued

33°36'S

215

200

Continued

Looking Glass Bay

151°12'E

27

Continued

of

151°08'E

151°08'E

33°39.90'S

01

### Bobbin Head

$$O_3$$

Page 3 of 3

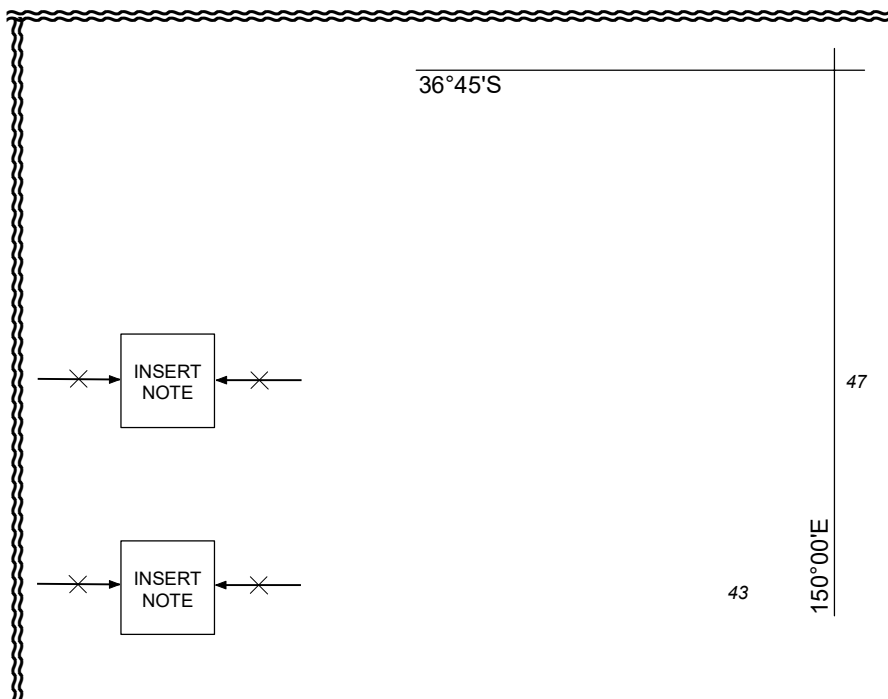
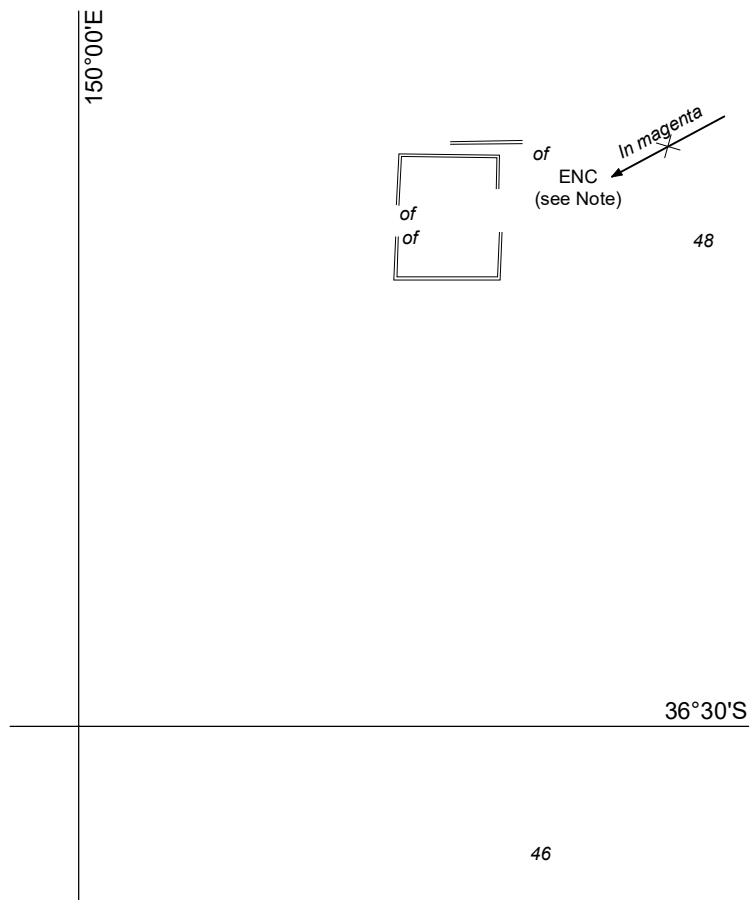
NTM 588/2020

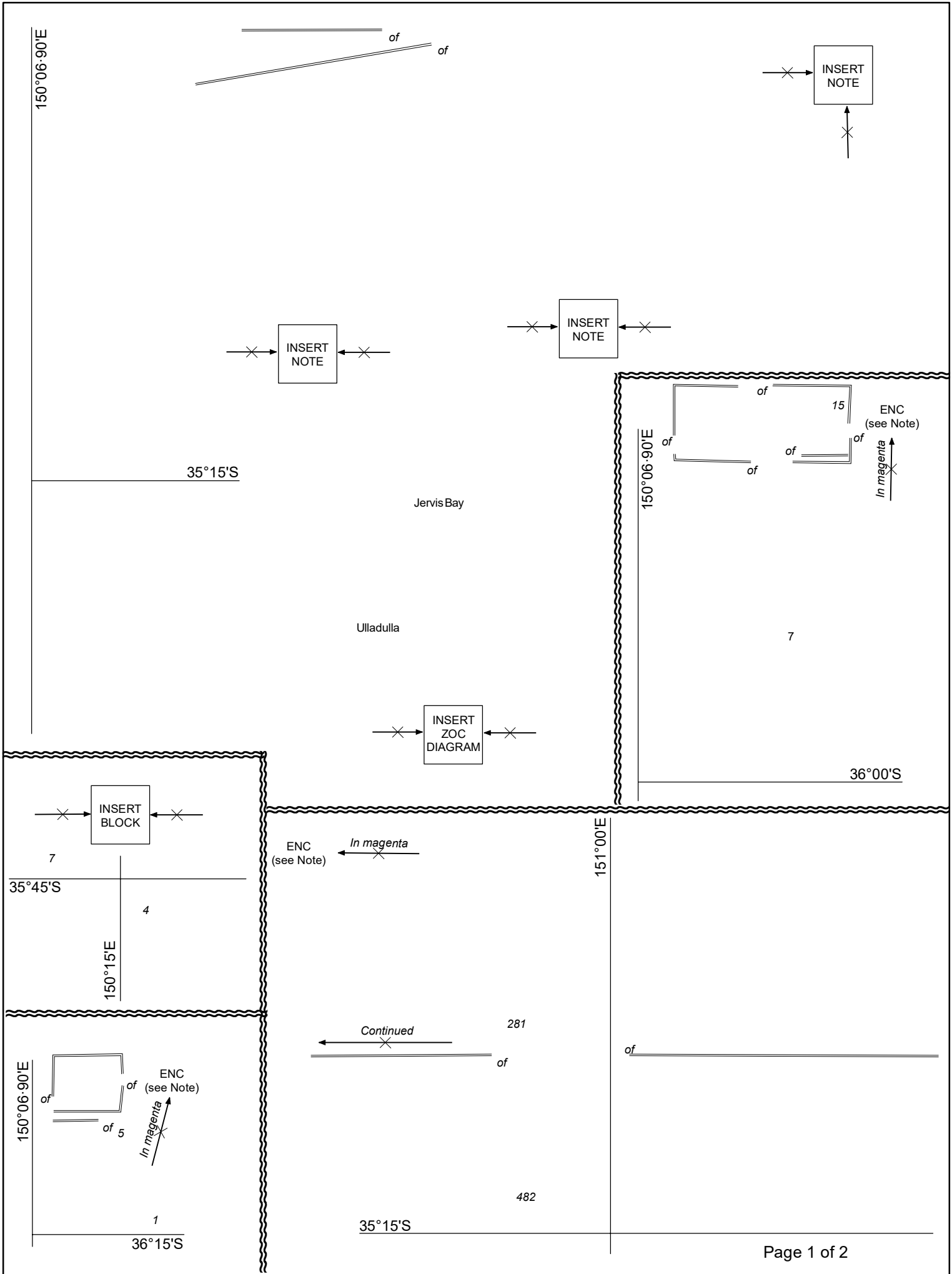


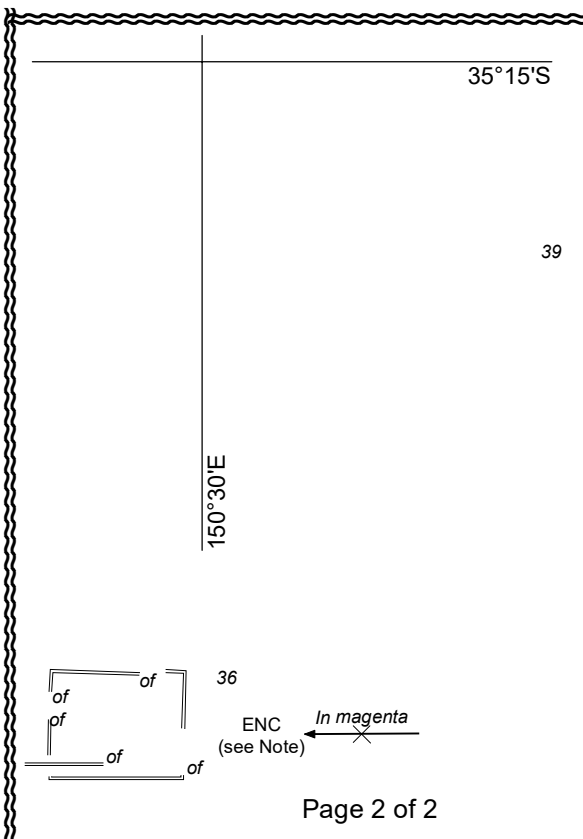
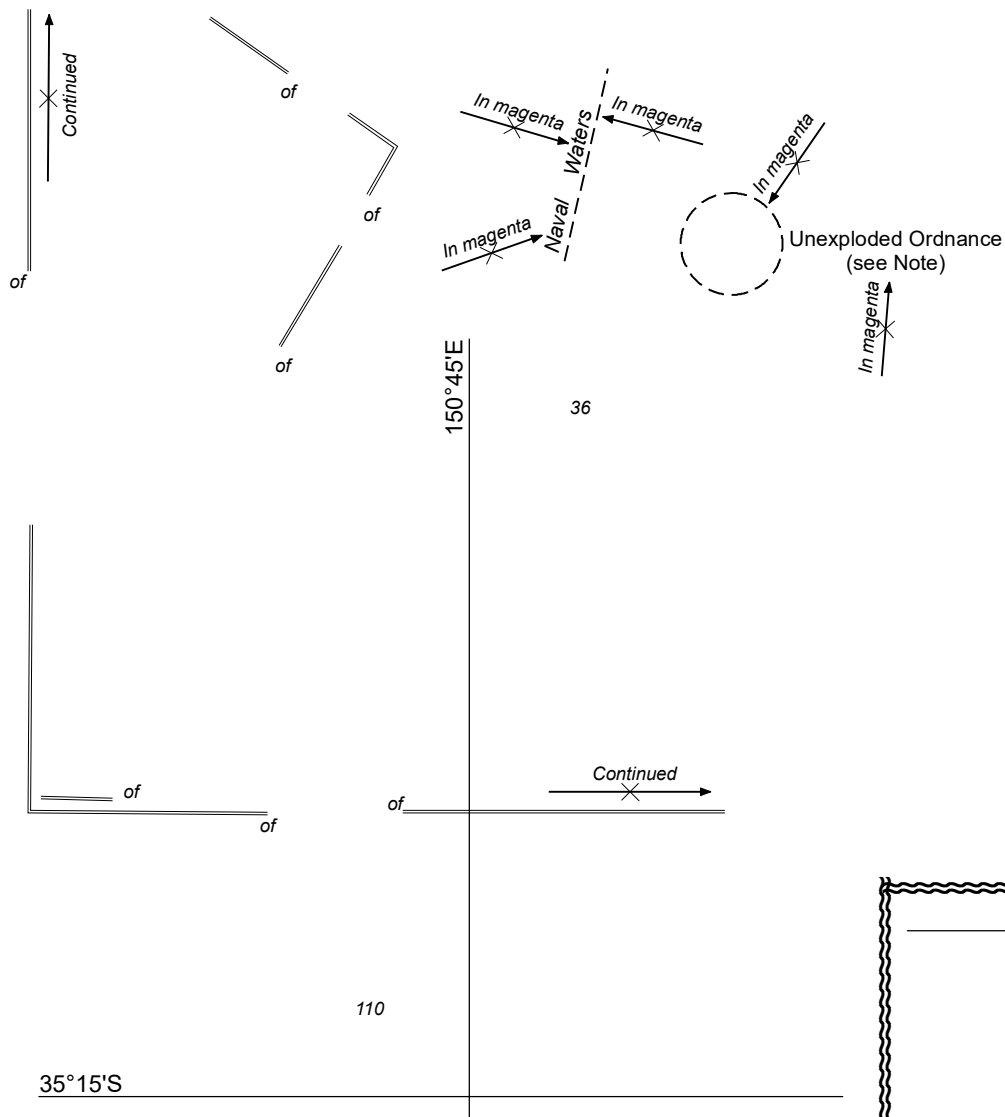
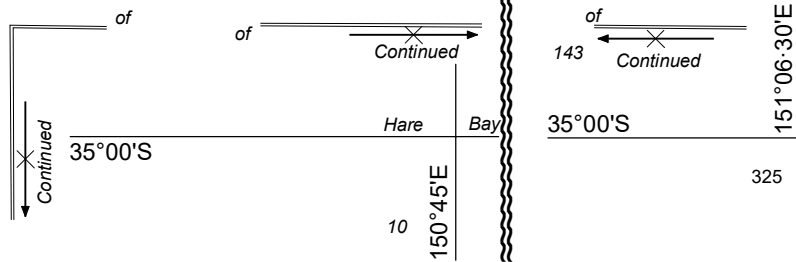
AUS 204

© Commonwealth of Australia 2020

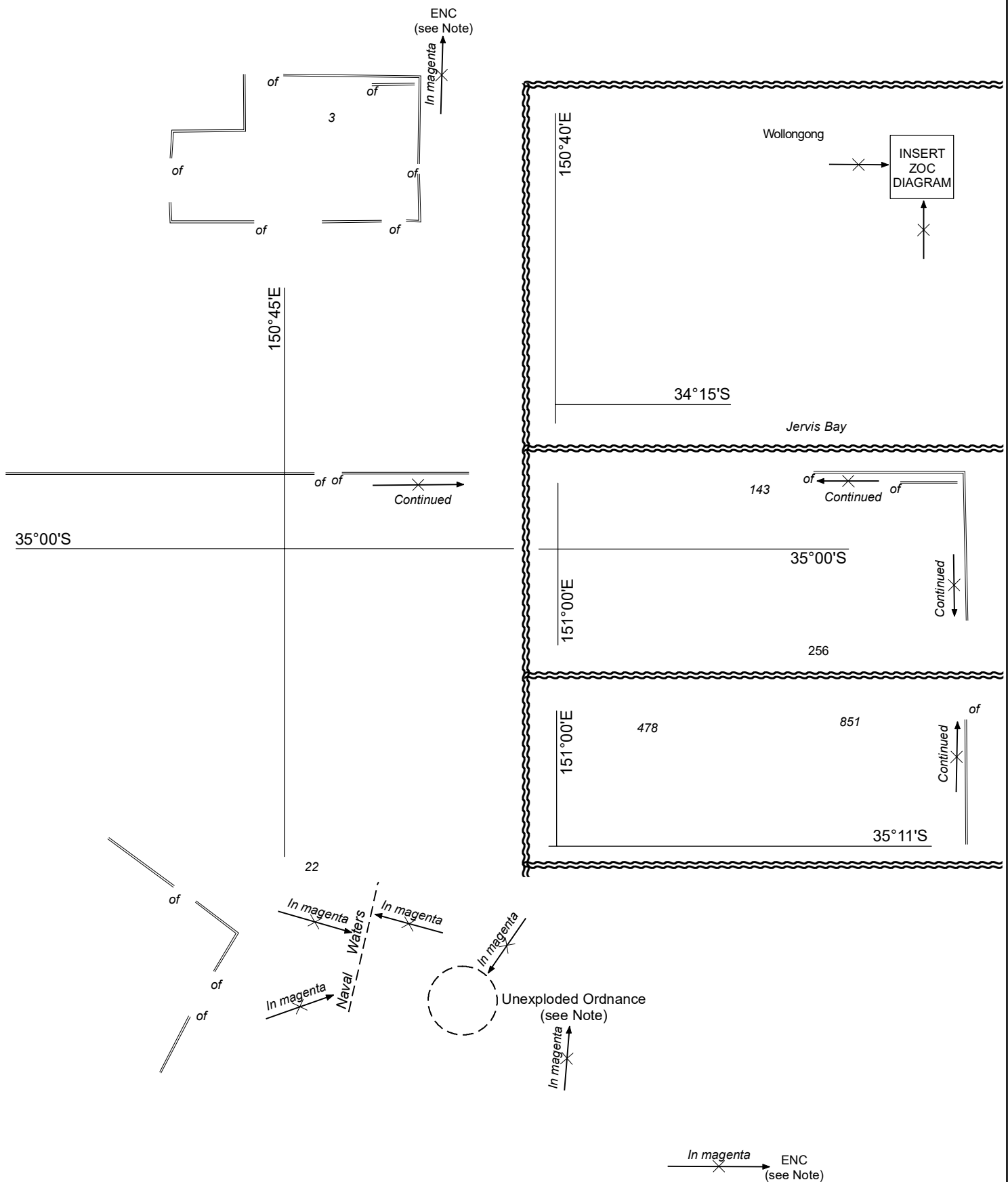
✕ → INSERT  
ZOC  
DIAGRAM ← ✕







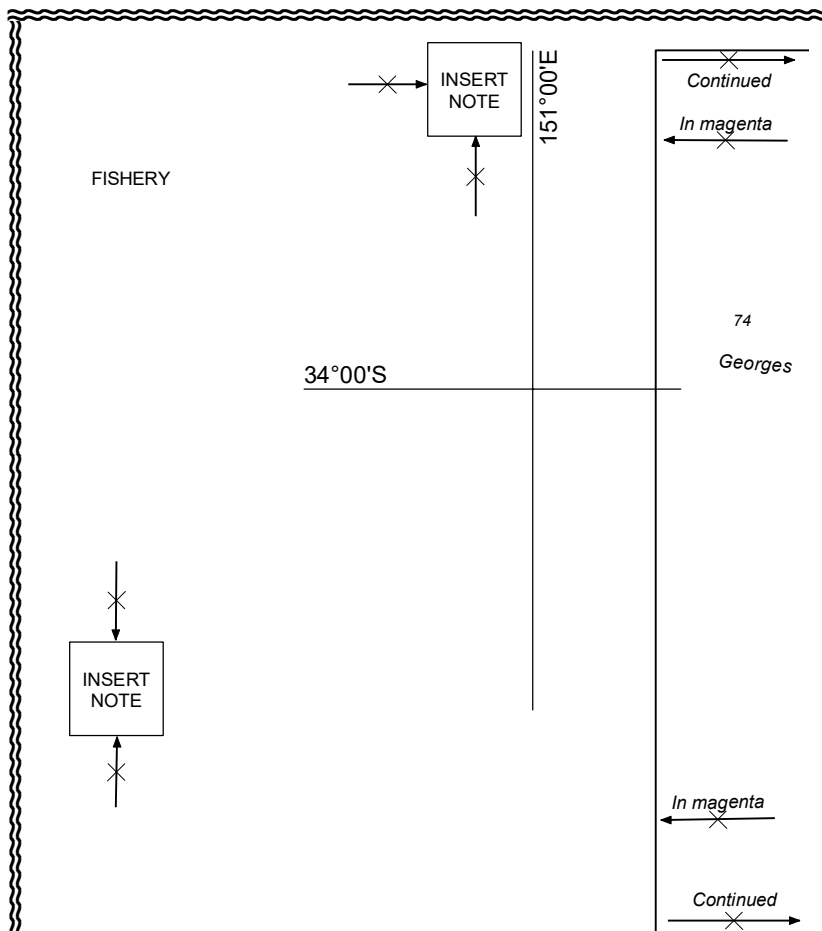
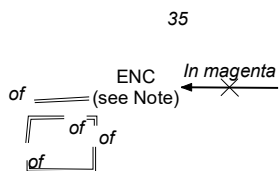
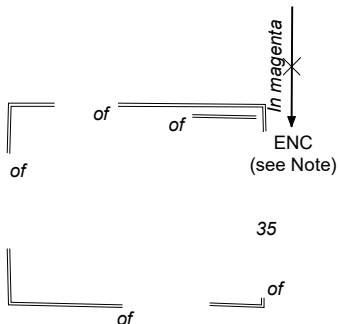


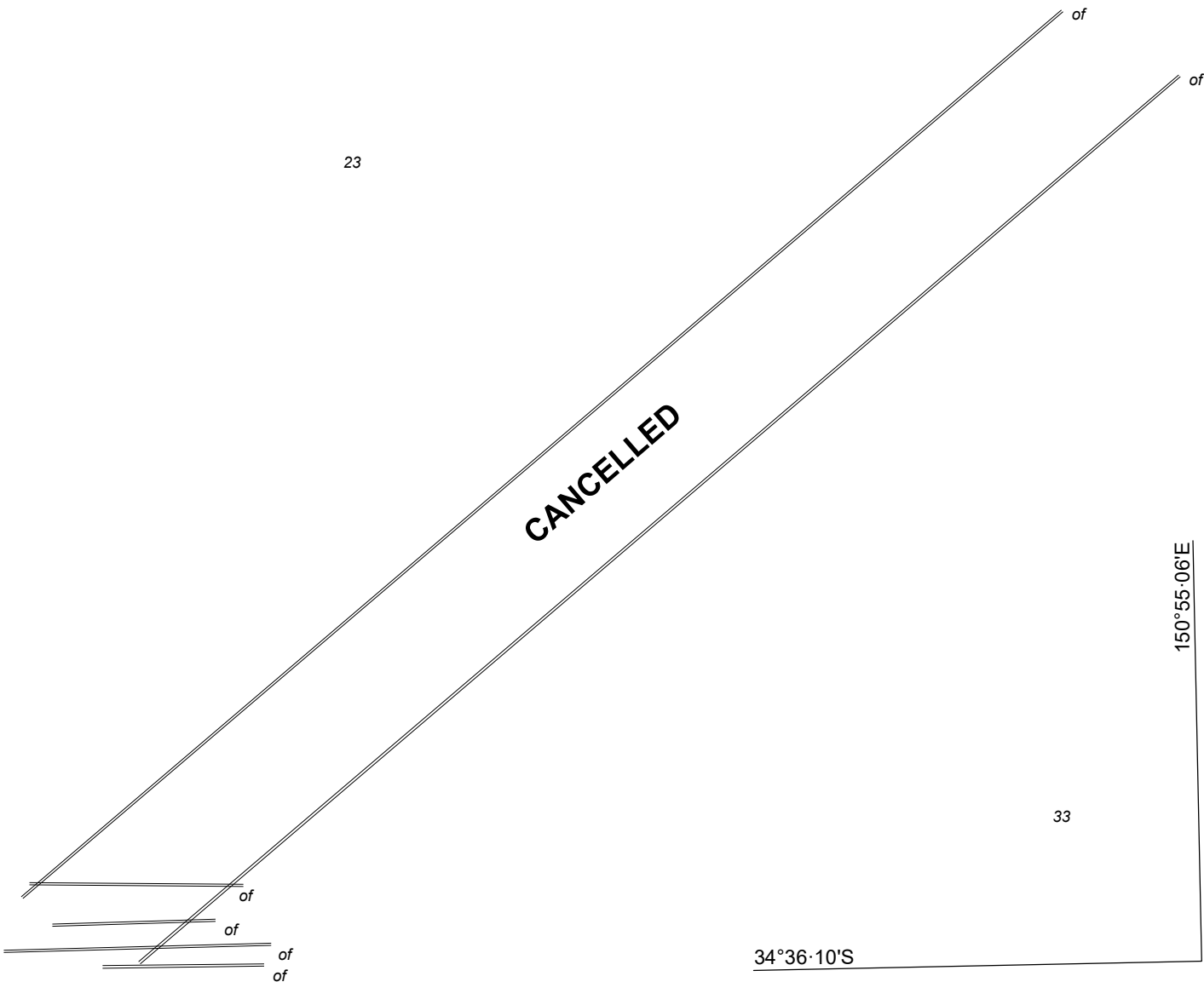




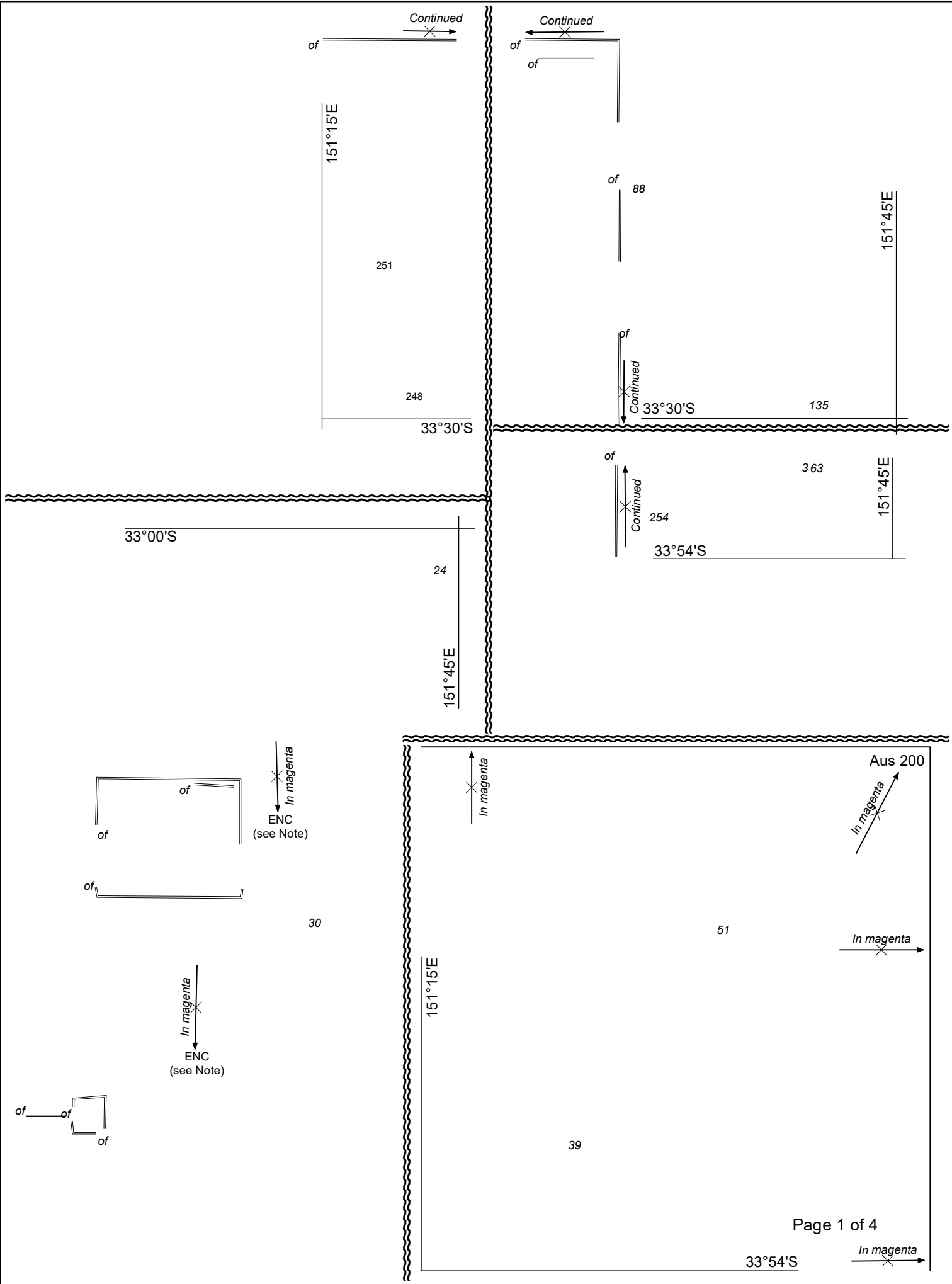
34°30'S

151°00'E





PLAN: BASS POINT



Newcastle

INSERT  
ZOC  
DIAGRAM

INSERT  
NOTE

151°30'E

33°15'S

Gorokan

of

of

of

of

3<sub>4</sub>

**CANCELLED**

4<sub>6</sub>

151°38·30'E

33°09·73'S

**PLAN: CATHERINE HILL BAY**

Page 2 of 4

*Previous Notice 335/2020*

NTM 588/2020

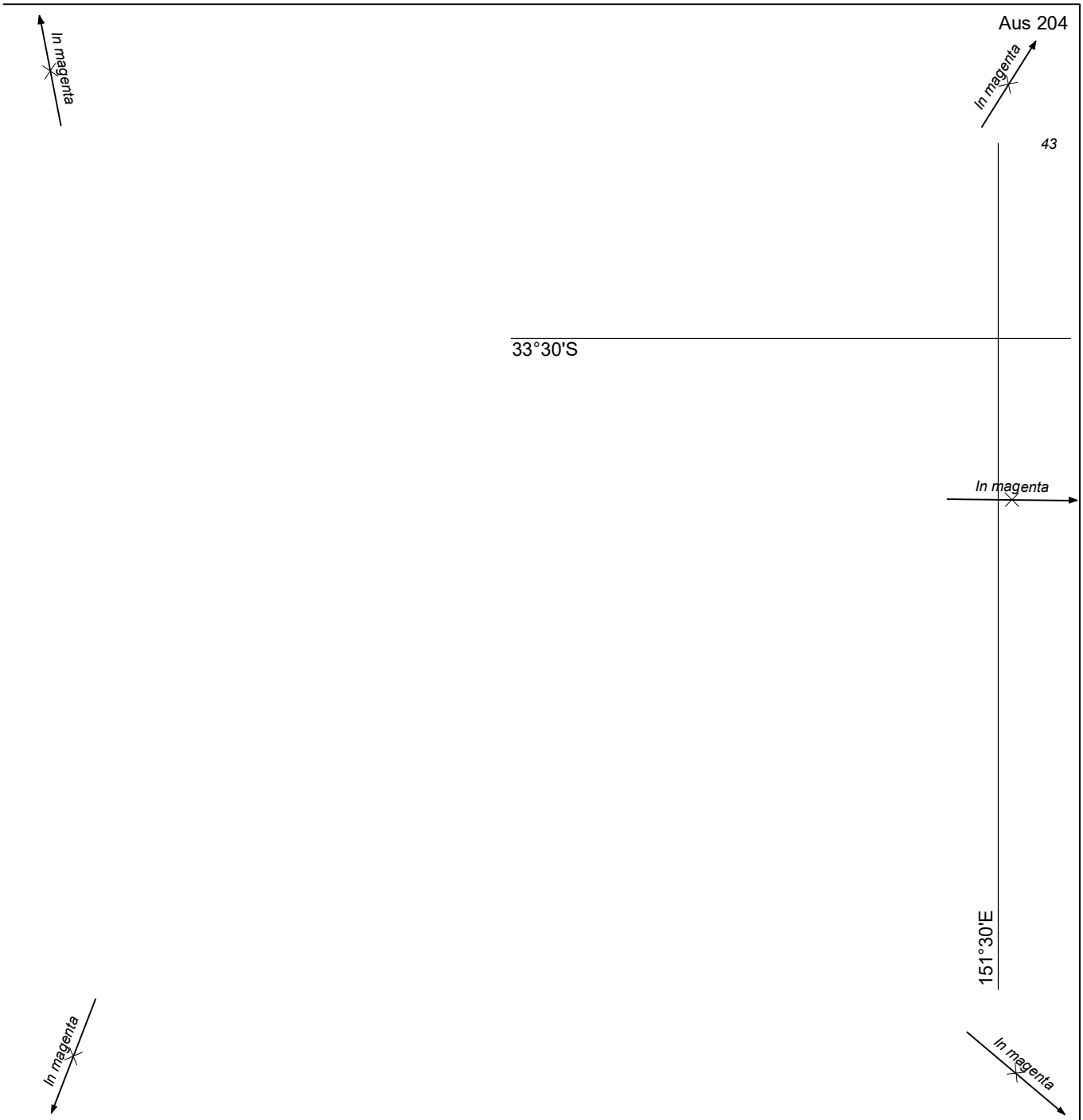


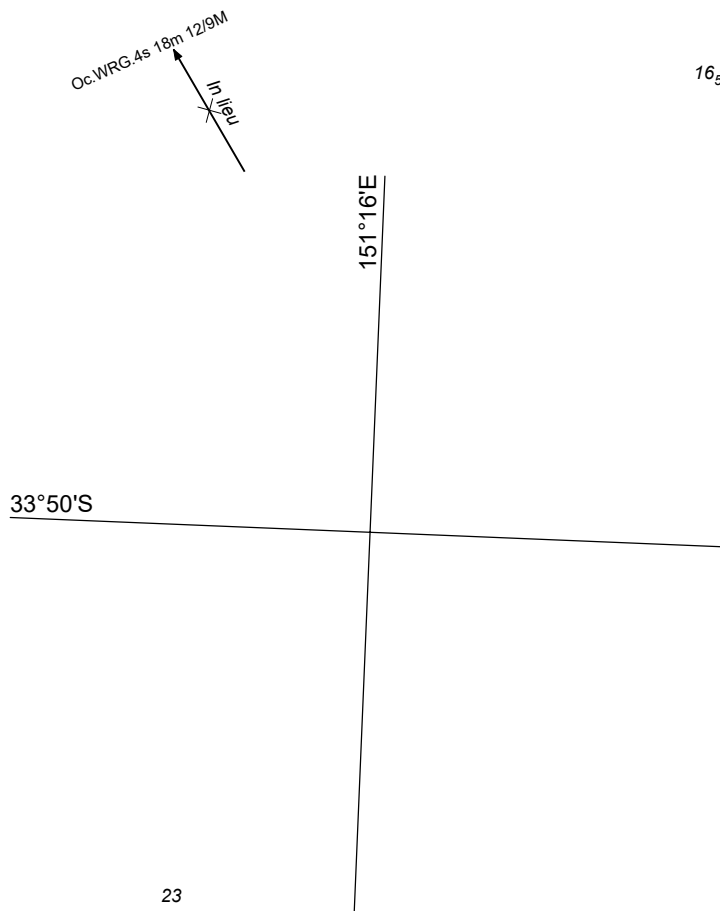
**AUS 809**

© Commonwealth of Australia 2020

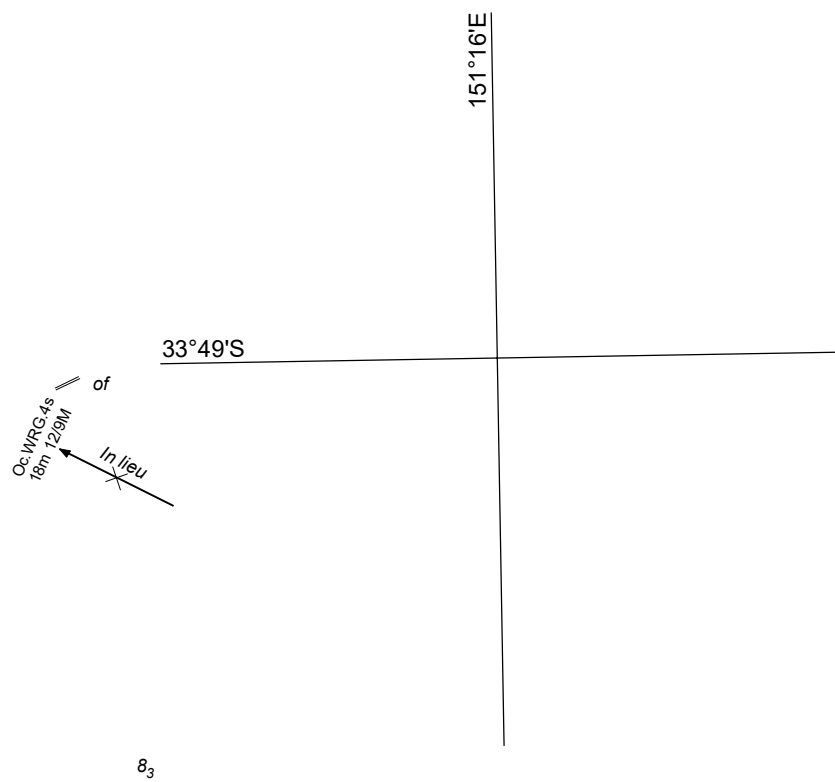


PLAN: LAKE MACQUARIE ENTRANCE





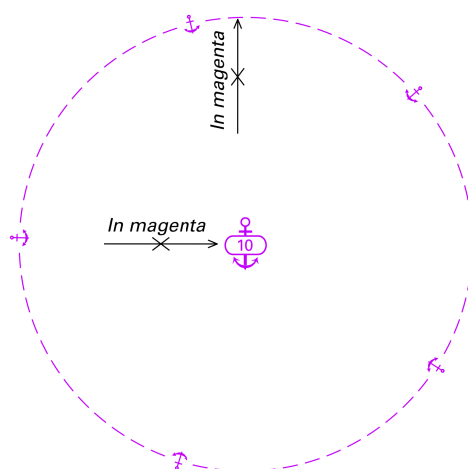
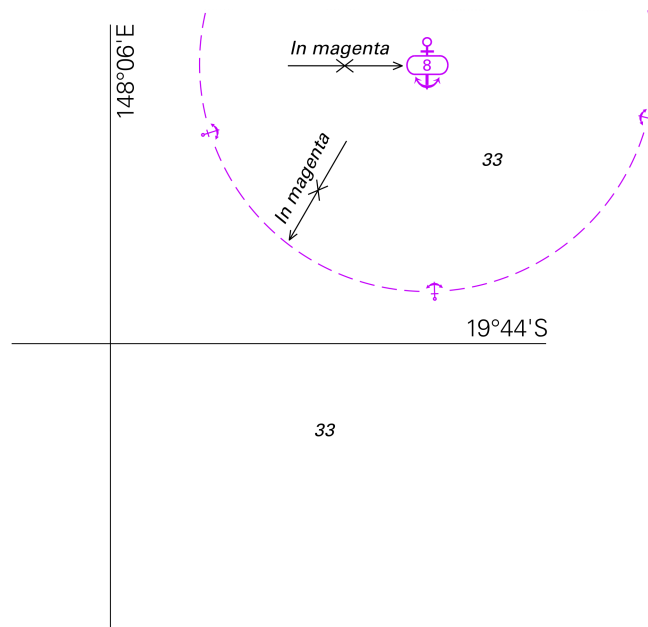
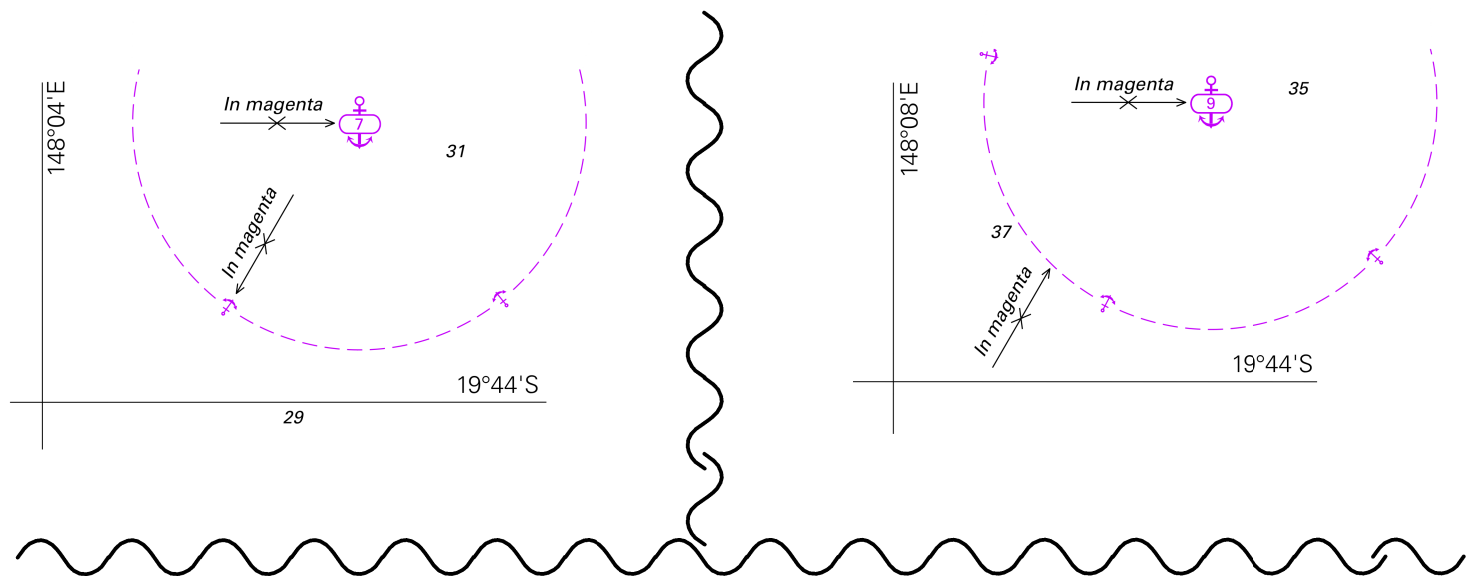
13<sub>3</sub>

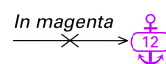
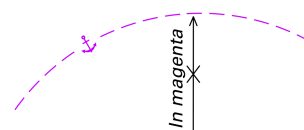
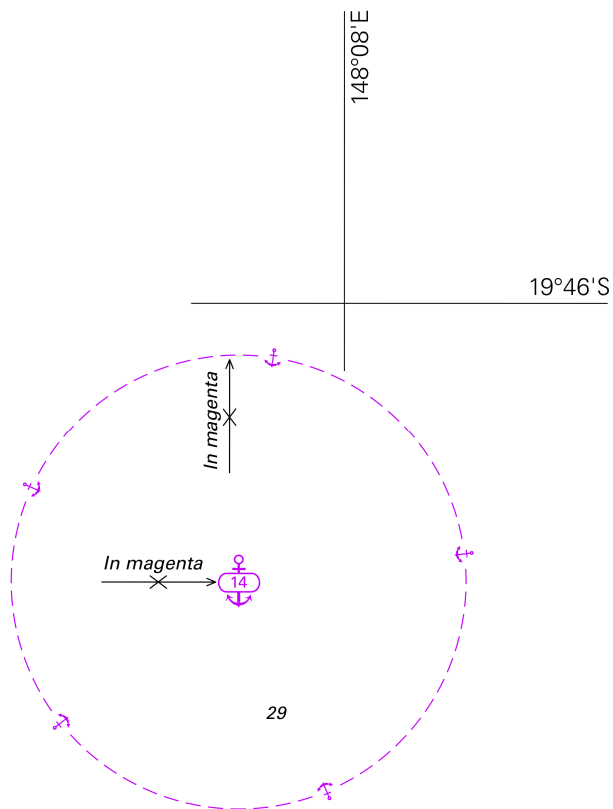
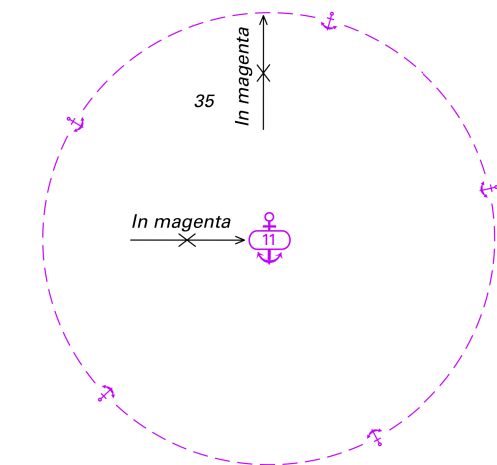


8<sub>3</sub>



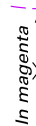




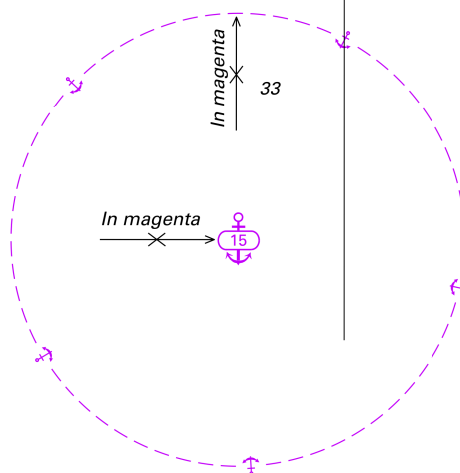


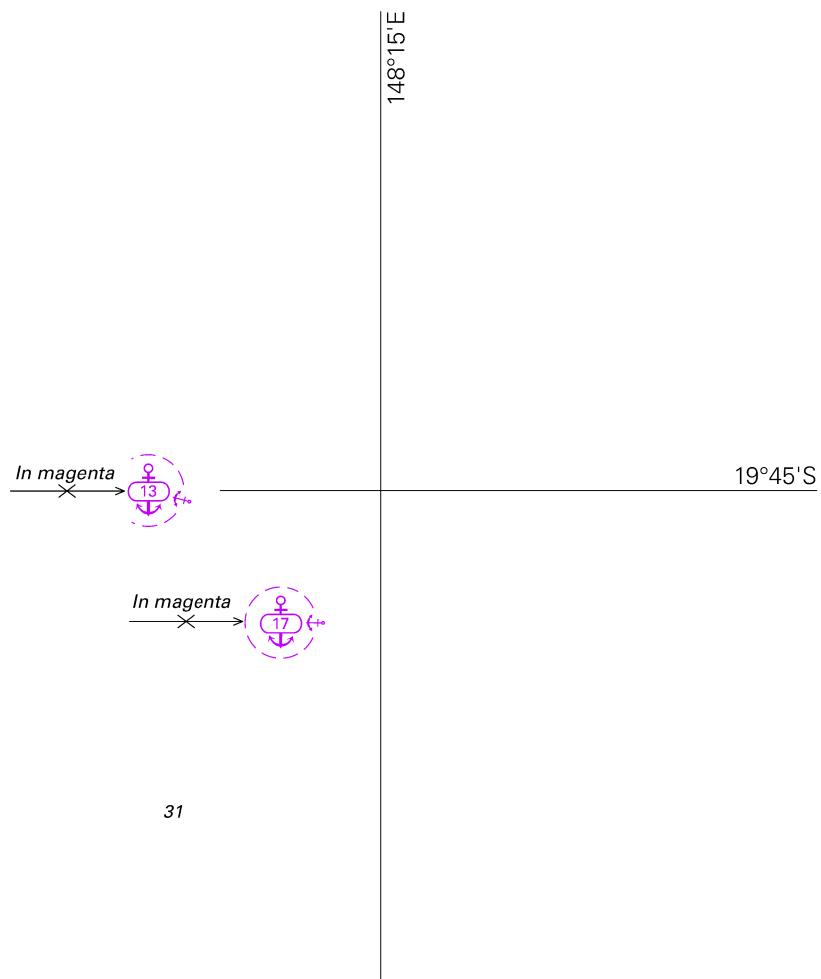
35

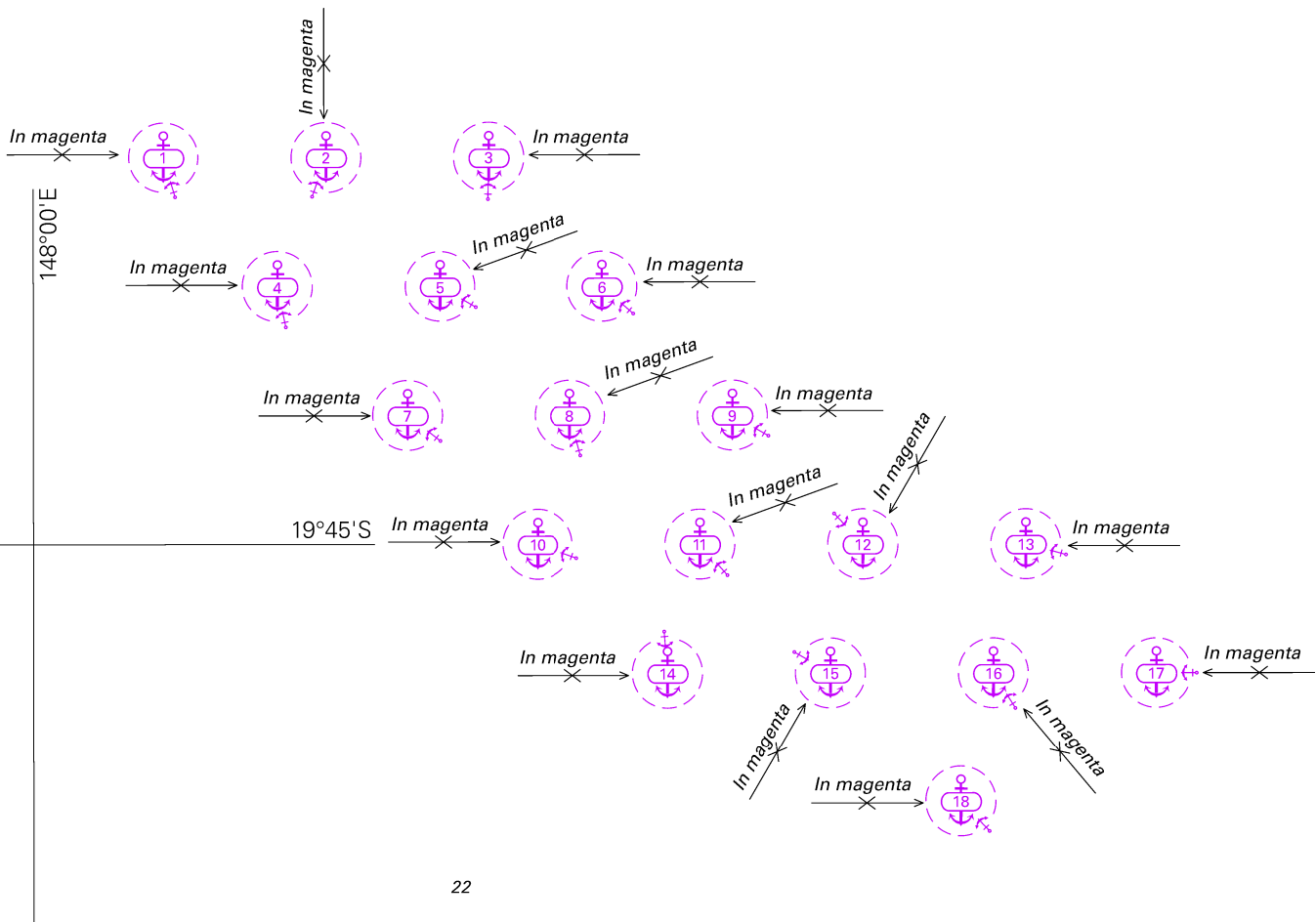
148°10'E



19°46'S

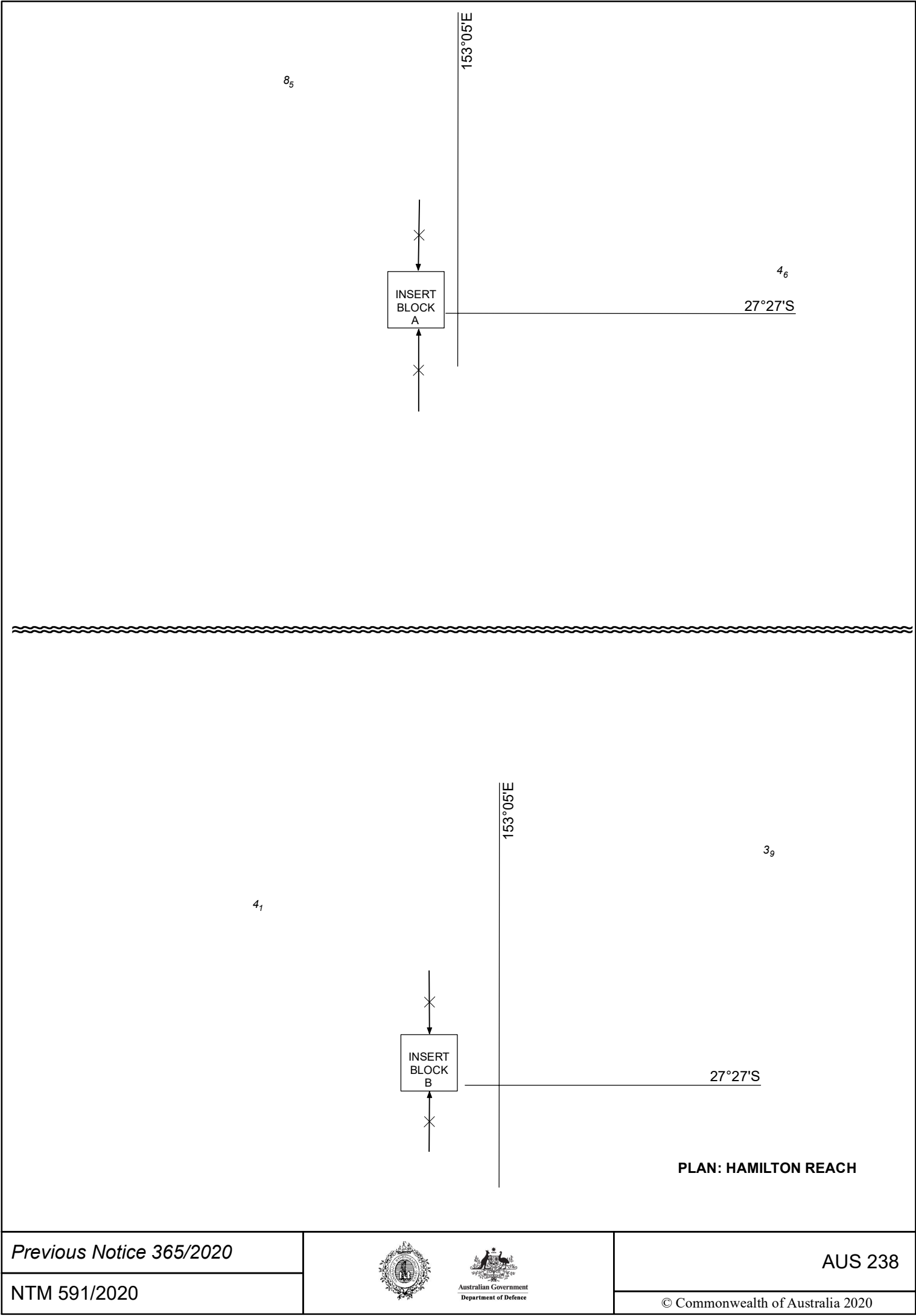






22





ENC *In magenta*  
(see Note) ← ~~X~~

146°50'E

 $12_3$ 

19°15'S

 $4_1$ [illegible]

19°10'S

147°05'E

ENC  
(see Note) ← ~~In magenta~~

19°15'S

B R U C E

146°45'E

146°50'E

19°15'S

INSERT  
BLOCK

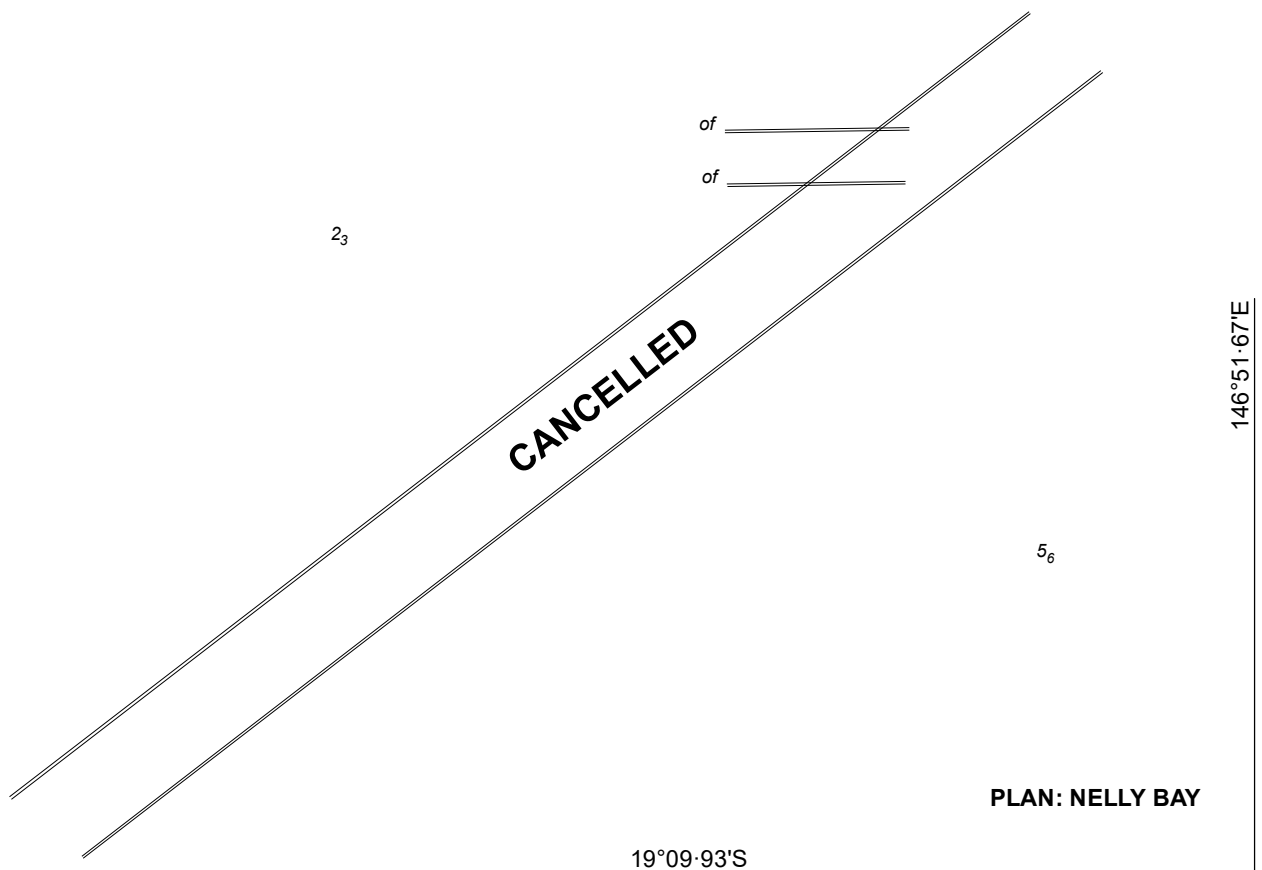
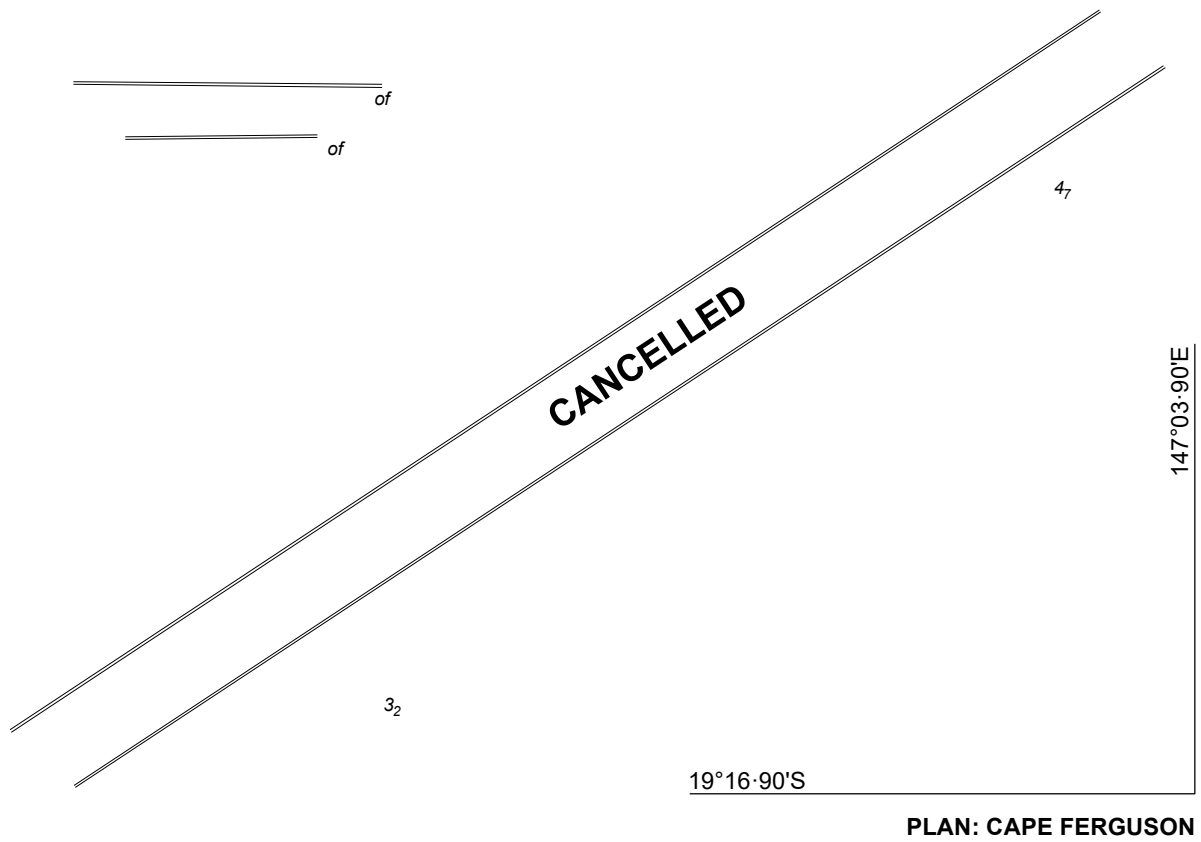
INSERT  
NOTE

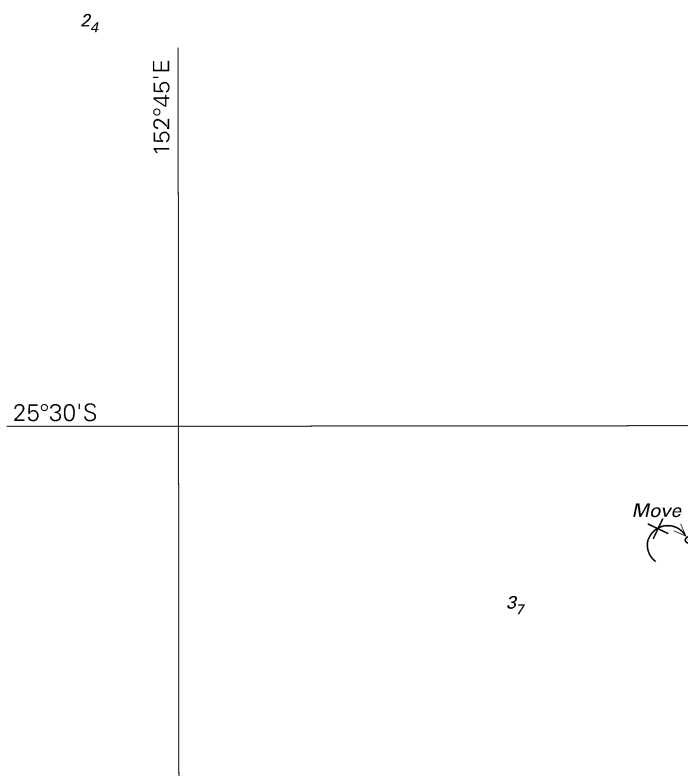
INSERT  
NOTE

INSERT  
ZOC  
DIAGRAM

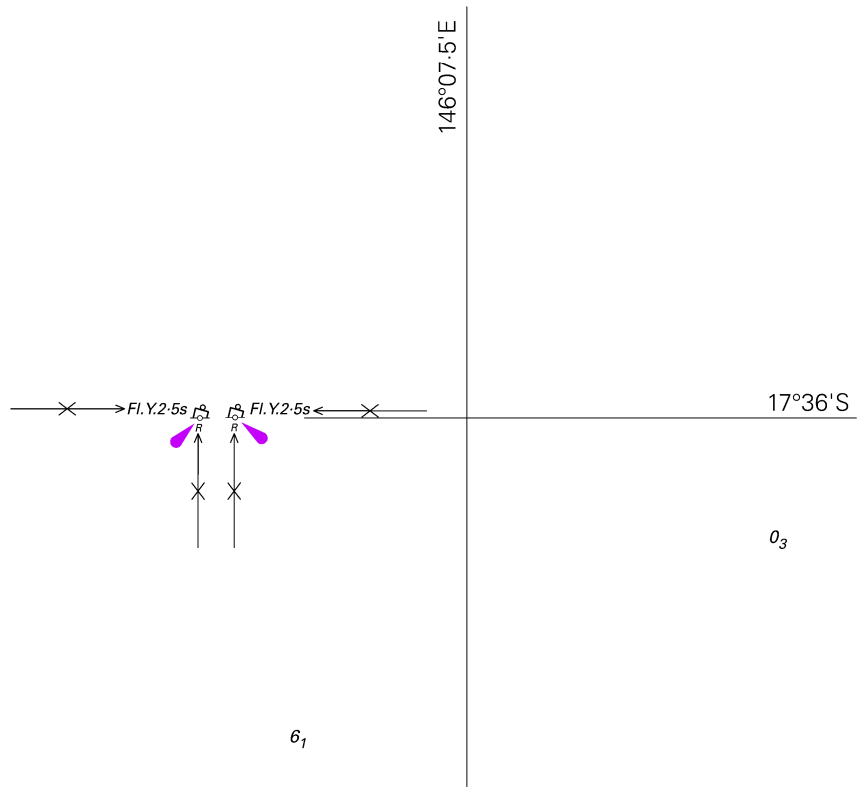
Cape Pallarenda











PLAN: MOURILYAN HARBOUR

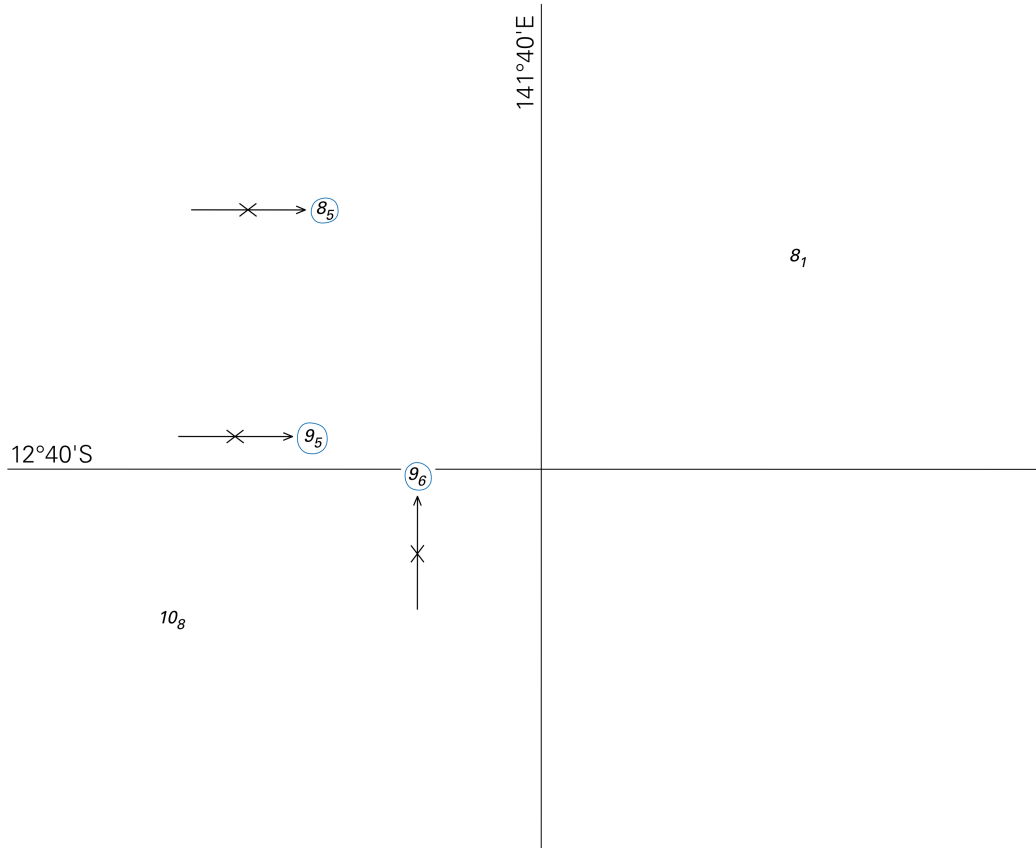
Previous Notice 1138/2019

NTM 594/2020

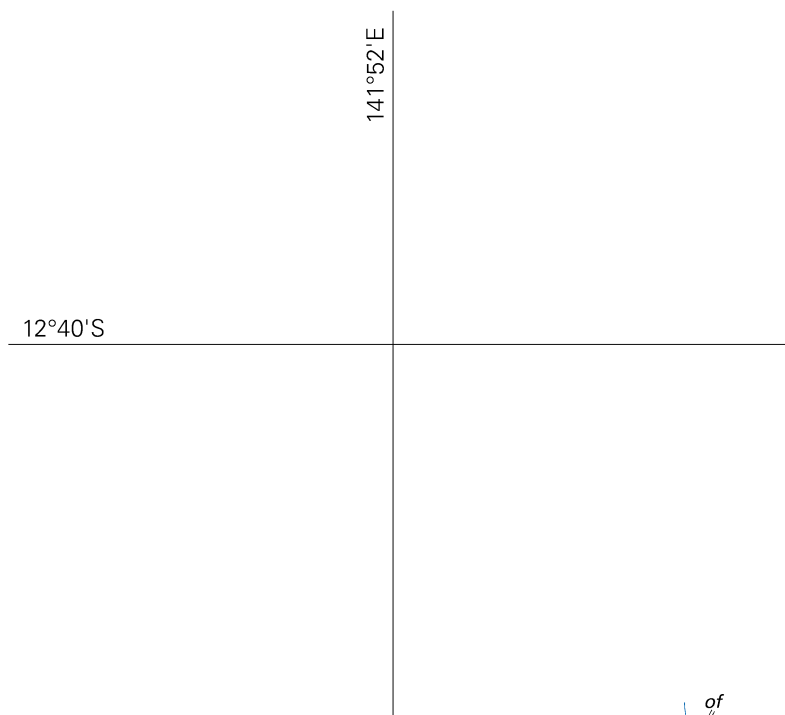


AUS 258

© Commonwealth of Australia 2020



8  
↑  
neil ul



of  
↑  
10\_5

PLAN: WEIPA

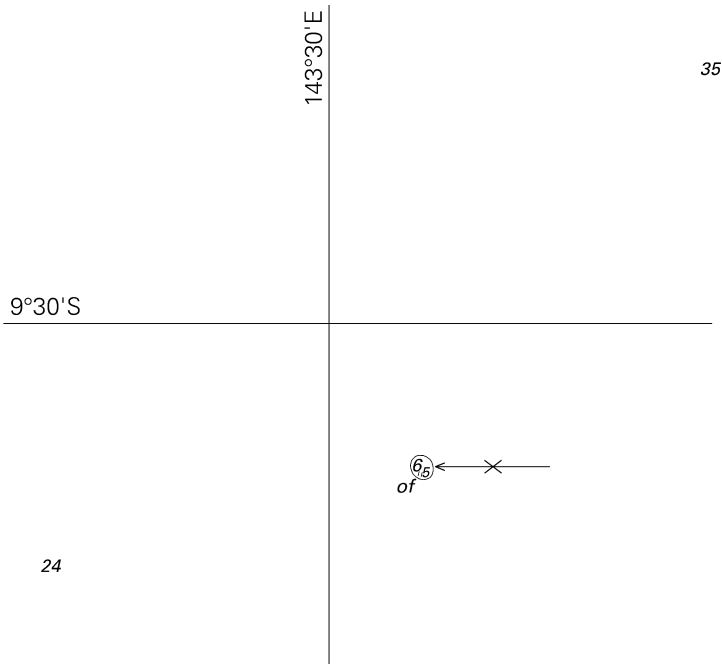
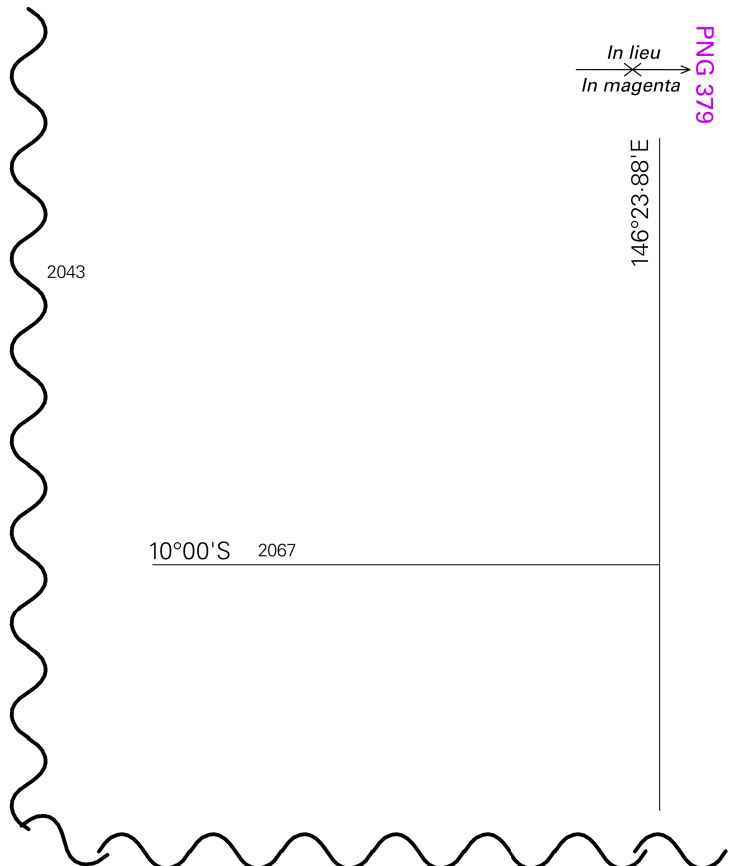
Previous Notice 1140/2019

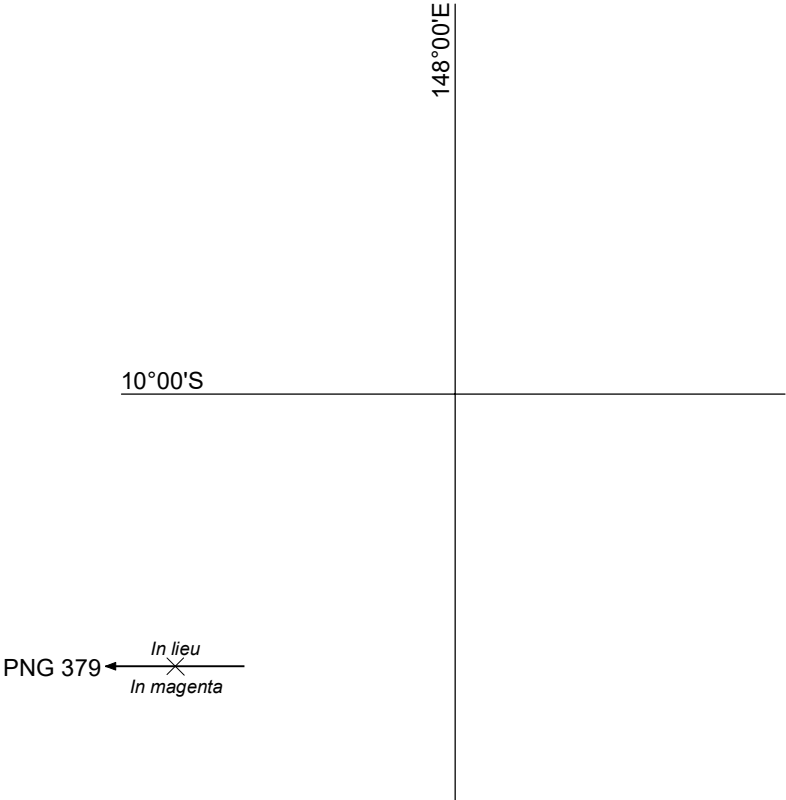
NTM 595/2020

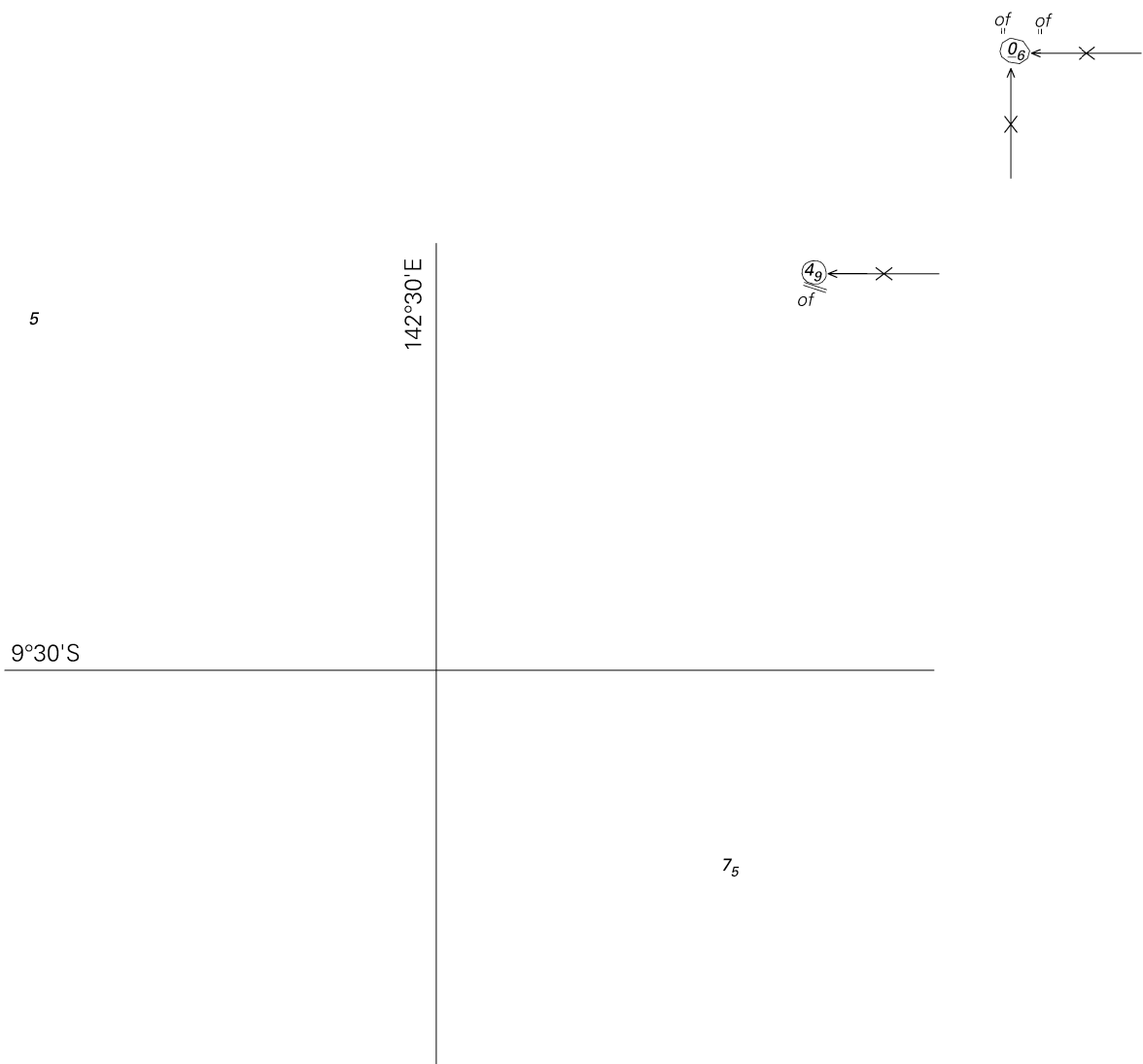


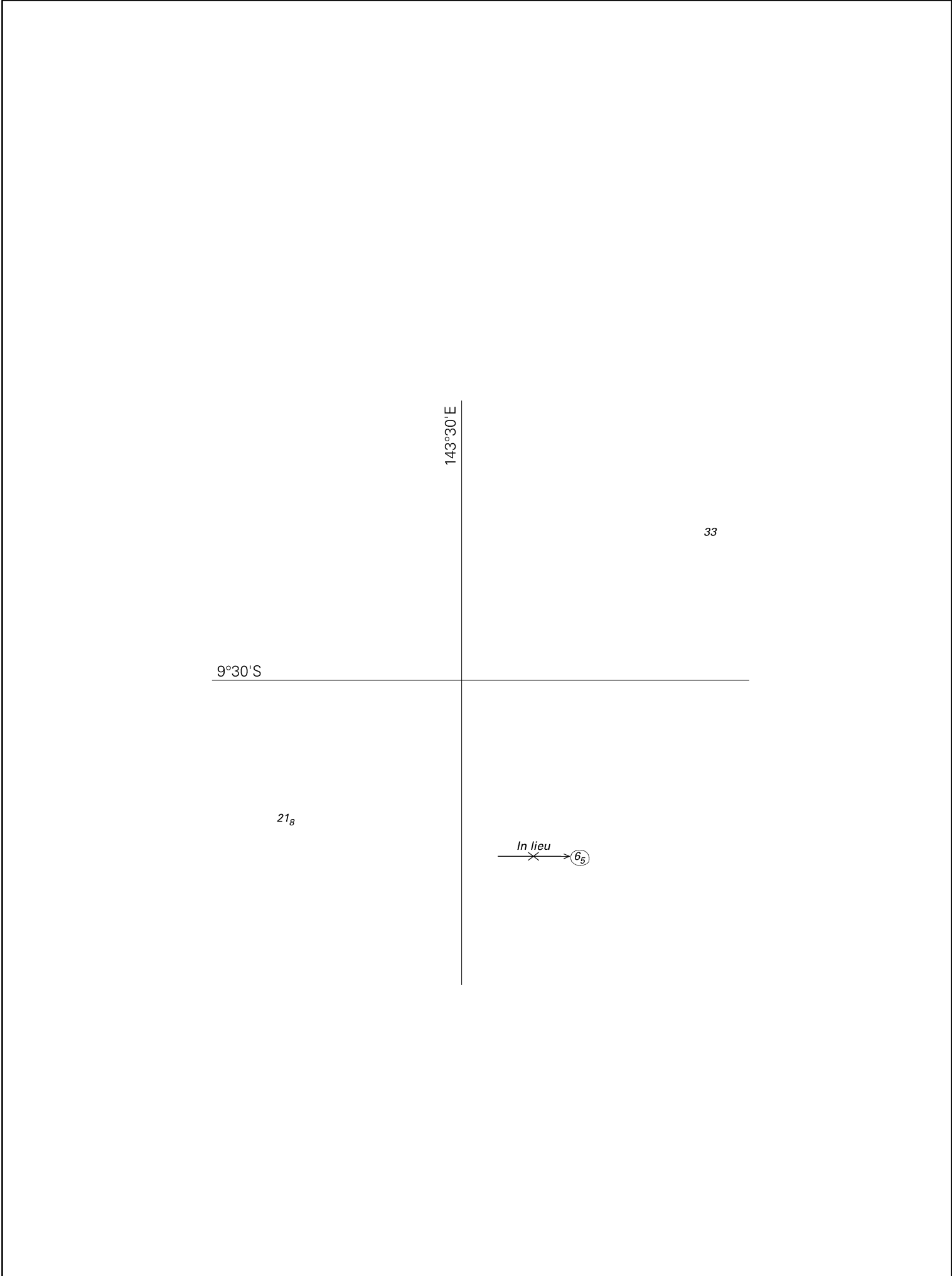
AUS 4

© Commonwealth of Australia 2020









143°30'E

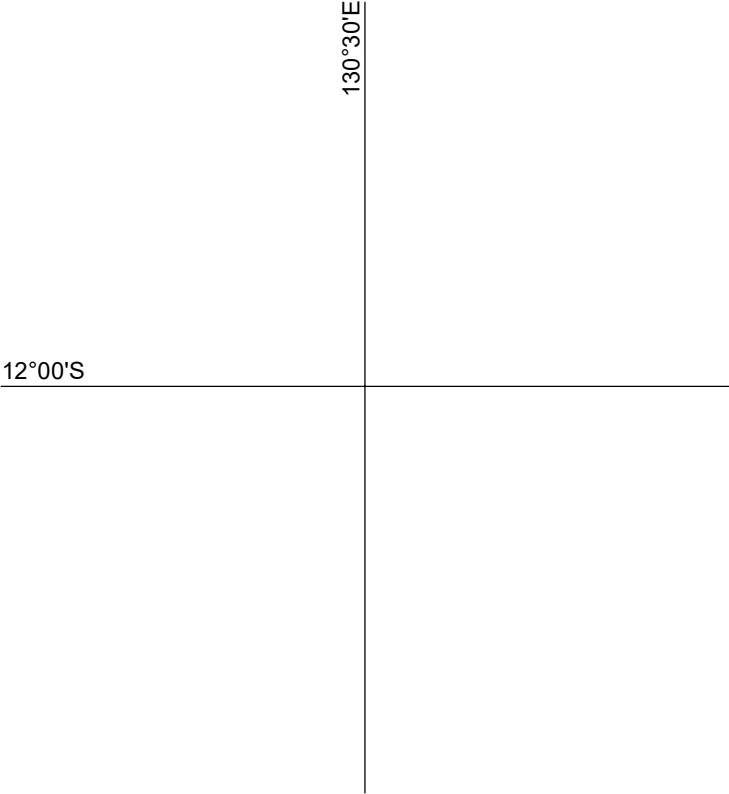
33

9°30'S

21<sub>g</sub>

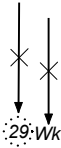
In lieu  
→ × → 6<sub>5</sub>

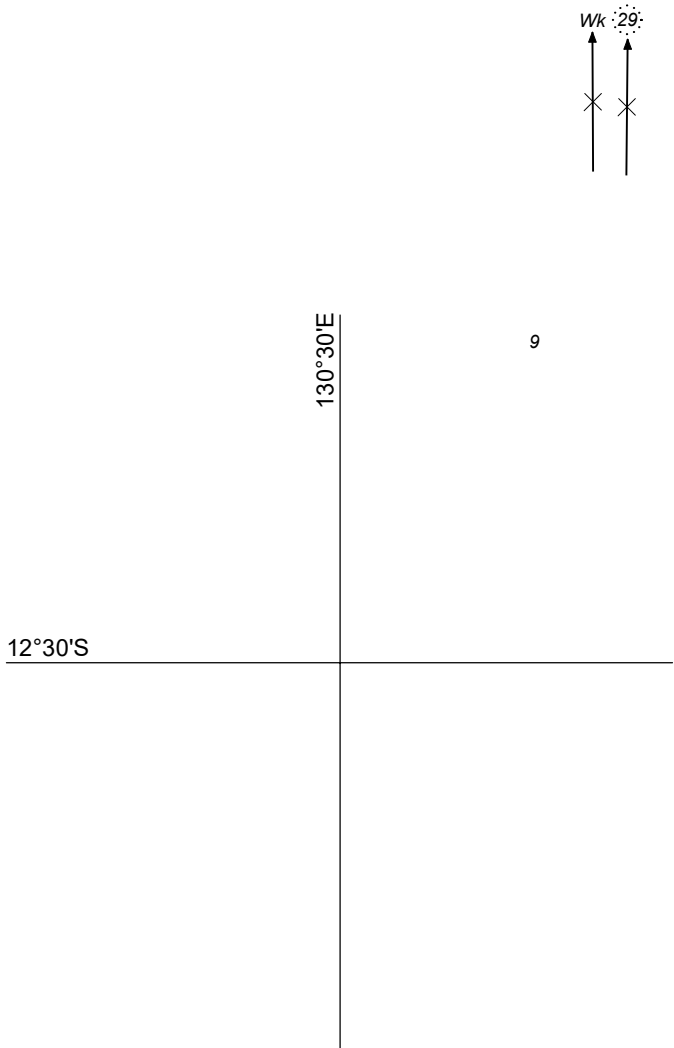




16

33

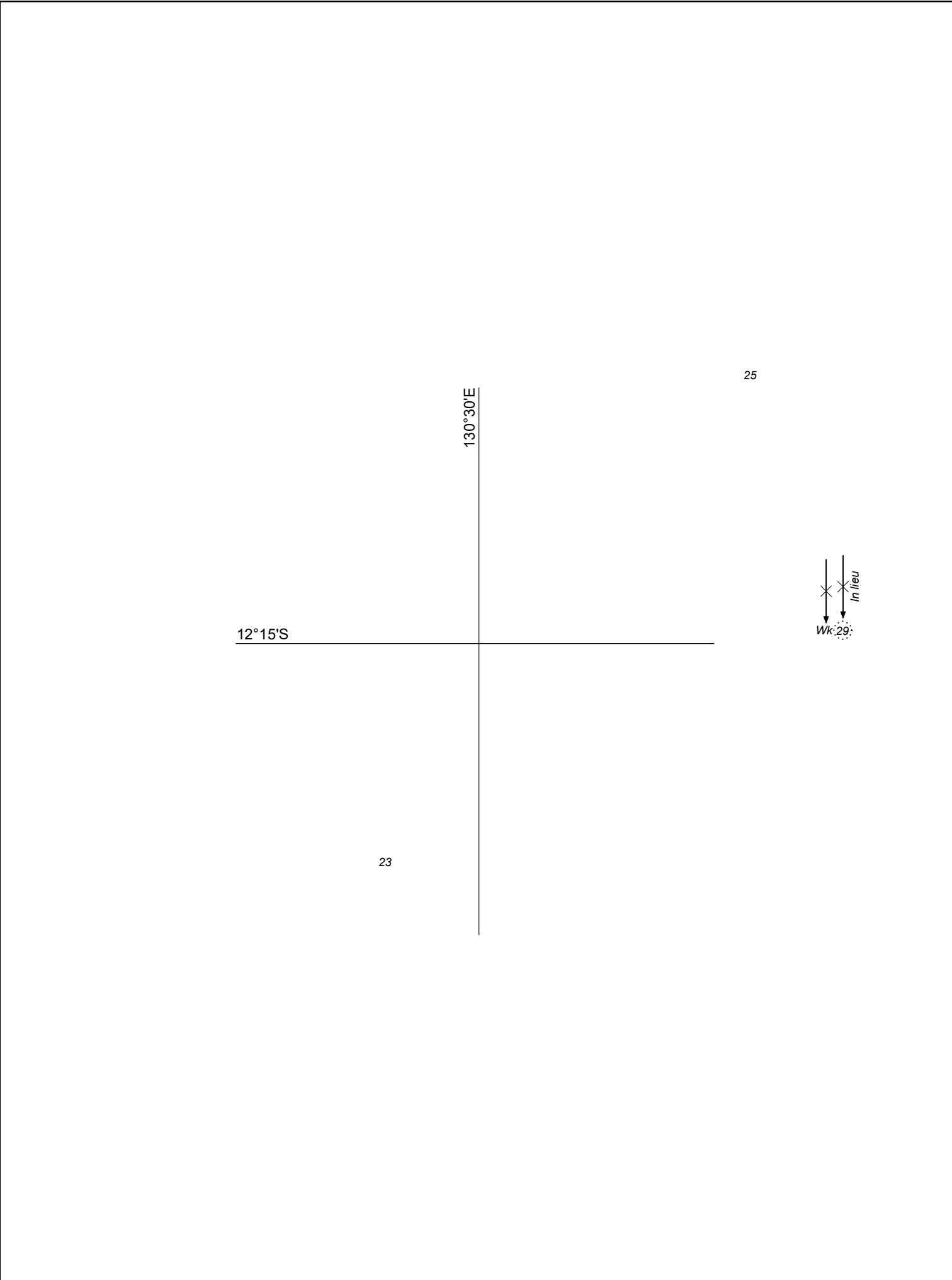




6



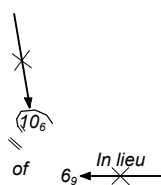




A coordinate grid with a horizontal line labeled  $33^{\circ}19'S$  and a vertical line labeled  $115^{\circ}39'E$ . The intersection is the origin. A point labeled 4 is in the bottom-left quadrant, and a point labeled  $5_6$  is in the top-right quadrant.

© Commonwealth of Australia 2020

65



127°30'E

14°00'S

39

Previous Notice 1203/2019

NTM 601/2020



Australian Government  
Department of Defence

AUS 318

© Commonwealth of Australia 2020

5

