



1 May 2020

Edition 9

AUSTRALIAN NOTICES TO MARINERS

Notices 332 - 360

Published fortnightly by the Australian Hydrographic Office



Australian Notices to Mariners are the authority for correcting charts and publications published by the Australian Hydrographic Office covering Australia, Papua New Guinea, Solomon Islands, Australian Antarctic Territory and Timor-Leste.

Commodore F.T. FREEMAN RAN
Hydrographer of Australia

SECTIONS.

- I. **Australian Notices to Mariners, including blocks and notes.**
- II. **Hydrographic Reports.**

SUPPLEMENTS.

- I. **Tracings**
- II. **Cumulative List of Australian Notices to Mariners.**
- III. **Cumulative List of Temporary and Preliminary Australian Notices to Mariners.**
- IV. **Temporary and Preliminary Notices in force.**

© Commonwealth of Australia 2020

This work is copyright. Apart from any use permitted under the Copyright Act 1968, no part may be reproduced by any process, adapted, communicated or commercially exploited without prior written permission from The Commonwealth represented by the Australian Hydrographic Office.

IMPORTANT NOTICE

This edition of Notices to Mariners includes all significant information affecting AHO products which the AHO has become aware of since the last edition. All reasonable efforts have been made to ensure the accuracy and completeness of the information, including third party information, on which these updates are based. The AHO regards third parties from which it receives information as reliable, however the AHO cannot verify all such information and errors may therefore exist. The AHO does not accept liability for errors in third party information.

GENERAL INSTRUCTIONS

The substance of these notices should be inserted on the charts affected.

Bearings are referred to the true compass and are reckoned clockwise from North; those relating to lights are given as seen by an observer from seaward.

Positions quoted in notices relate to WGS84 which is the horizontal datum for all charts produced by the Australian Hydrographic Office.

The range quoted for a light is its nominal range.

Depths are with reference to the chart datum of each chart. Heights are above mean high water springs or mean higher high water, as appropriate.

The capital letter (P) or (T) after the number of any notice denotes a preliminary or temporary notice respectively, which are contained separately at the end of the permanent notices.

REPORTING OF DANGERS

Mariners are particularly requested to notify the AUSTRALIAN HYDROGRAPHIC OFFICE, Locked Bag 8801 Wollongong, NSW 2500 (Fax 02-4223 6599, e-mail datacentre@hydro.gov.au or, alternatively by filling in and submitting the [Hydrographic Notes](#) forms located on the web site – www.hydro.gov.au), immediately on the discovery of new dangers or suspected dangers to navigation. For changes or defects in aids to navigation notify AusSAR (Fax 02-6230 6868 or email rccaus@amsa.gov.au).

AUTHORISED USE

Copies of Australian notices are available free of charge from the Australian Hydrographic Office (AHO) website (www.hydro.gov.au) and through the eNotices (email) service (www.hydro.gov.au/enotices/enotices.htm).

Individual Notices may be copied for the purpose of inserting Notice substance on official charts and publications. Paper copies may be printed by chart agents and distributed to customers on a cost recovery basis. Participating chart agents are listed on the AHO website as providing a 'Paper Notices to Mariners' service (www.hydro.gov.au/webapps/jsp/agents/agents-list.jsp). Copies of the notices may not be sold for profit without prior written agreement.

NUMERICAL INDEX OF NOTICES TO MARINERS

Edition No 9

Notices	Aus Chart, INT Chart, ENC Cell, AHP, BA Pubs
332	Products - New Charts, New Editions, Withdrawn Charts
333	Aus 280, 281
334	Aus 200, 202
335	Aus 207, 809
336	Aus 292, 839
337	Aus 834
338	Aus 377, 837, 840
339	Aus 252, 253, 254, 824
340	Aus 301
341	Aus 301
342	Aus 244, 245, 246
343	Aus 517
344	PNG 507
345	Aus 840
346	Aus 4603, 4708, INT 603, 708
347	Aus 164
348	SLB 201, 304
349(T)	Aus 238
350(T)	Aus 230
351(P)	Aus 230
352(T)	Aus 246
353(T)	Aus 257
354(T)	Aus 24
355(T)	Aus 327, 328
356(T)	Aus 328, 329, 744, 4723, 4725, INT 723, 725
357(T)	Aus 327, 328, 329, 742, 744, 745, 4723, 4725, INT 723, 725
358(T)	Aus 349, 787
359(T)	Aus 143
360(T)	Aus 169, 171

NUMERICAL INDEX OF CHARTS AFFECTED

Edition No 9

Aus Chart	Notices
Aus 24	354(T)
Aus 143	359(T)
Aus 164	347
Aus 169	360(T)
Aus 171	360(T)
Aus 200	334
Aus 202	334
Aus 207	335
Aus 230	350(T), 351(P)
Aus 238	349(T)
Aus 244	342
Aus 245	342
Aus 246	342, 352(T)
Aus 252	339
Aus 253	339
Aus 254	339
Aus 257	353(T)
Aus 280	333
Aus 281	333
Aus 292	336
Aus 301	340, 341
Aus 327	355(T), 357(T)
Aus 328	355(T), 356(T), 357(T)
Aus 329	356(T), 357(T)
Aus 349	358(T)
Aus 377	338
Aus 517	343
Aus 742	357(T)
Aus 744	356(T), 357(T)
Aus 745	357(T)
Aus 787	358(T)
Aus 809	335
Aus 824	339
Aus 834	337
Aus 837	338
Aus 839	336
Aus 840	338, 345
Aus 4603	346
Aus 4708	346
Aus 4723	356(T), 357(T)
Aus 4725	356(T), 357(T)
PNG 507	344
SLB 201	348
SLB 304	348

INT Chart	Notices
INT 603	346
INT 708	346
INT 723	356(T), 357(T)
INT 725	356(T), 357(T)

332 AUSTRALIA - Products - New Charts, New Editions, Withdrawn Charts

Australian Hydrographic Office

New Charts

<i>Chart</i>	<i>Title and Geographical limits</i>	<i>Scale</i>	<i>Publication Date</i>	<i>Remarks</i>
NIL				

New Electronic Navigation Chart (Aus ENC)

<i>Cell Name</i>	<i>Title</i>	<i>Publication Date</i>	<i>Remarks</i>
AU6BTB01	Australia - New South Wales - Port Botany Entrance Shoal	1 May 2020	
AU5WOL01	Australia - New South Wales - Wollongong	1 May 2020	AU5194P1 has been withdrawn

New Editions and Withdrawn Charts

<i>Chart</i>	<i>Title</i>	<i>Scale</i>	<i>Publication Date</i>	<i>Remarks</i>
NIL				

Chart permanently withdrawn

Charts listed above as withdrawn no longer meet chart carriage requirements and should be marked as "superseded" and replaced with the new chart/ new edition listed prior to passage through the area covered by the new chart.

When placing orders with a chart agent between notice of forthcoming edition and its publication, mariners should advise whether their order pertains to the current edition or the new edition.

For further details refer to the AHO website at www.hydro.gov.au for new edition and new chart stock arrival information.

333 AUSTRALIA - Products - New Charts and New Editions to be published shortly

Australian Hydrographic Office

New Charts to be published shortly

<i>Chart</i>	<i>Title</i>	<i>Scale</i>	<i>Expected Publication Date</i>	<i>Remarks</i>
NIL				

New Editions to be published shortly

<i>Chart</i>	<i>Title</i>	<i>Scale</i>	<i>Expected Publication Date</i>	<i>Remarks</i>
NIL				

Charts to be withdrawn without replacement 29 May 2020

<i>Chart</i>	<i>Title</i>	<i>Scale</i>	<i>Publication Date</i>
Aus 280 Edition 5	Australia - East Coast - Queensland - Plans in Queensland (Sheet 3) Plans: Magpie Reef to Eden Reef Flinders Group	1:75 000 1:50 000	22 February 2019
Aus 281 Edition 3	Australia - East Coast - Queensland - First Three Mile Opening to Cape Direction	1:75 000	22 February 2019

334 AUSTRALIA - NEW SOUTH WALES - Port Jackson - Balls Head Bay - Light beacon; infrastructure
NSW Roads and Maritime Services , Transport for NSW

Aus 200 [1187/2019]

Insert	west cardinal light beacon, Q(9)15s, without topmark	33° 50'.587 S	151° 11'.501 E
	legend, (ru)	33° 50'.595 S	151° 11'.808 E
	legend, Ru	33° 50'.665 S	151° 11'.813 E
	legend, Ru	33° 50'.677 S	151° 11'.771 E

Aus 202 [89/2020]

Insert	accompanying block	33° 50'.39 S	151° 11'.74 E
--------	--------------------	--------------	---------------

335 AUSTRALIA - NEW SOUTH WALES - Stockton Bight - Depths; historic wreck
Newcastle Port Corporation

Aus 207 [NE 31/5/2019]

Insert	accompanying block	32° 53'.5 S	151° 49'.5 E
--------	--------------------	-------------	--------------

Aus 809 [5/2020]

Insert	contour, between	32° 53'.45 S	151° 49'.40 E
		32° 53'.00 S	151° 49'.73 E
	danger circle to enclose depth, 15 ₂ m, with magenta legend, <i>Historic Wk</i> (see Note)	32° 53'.33 S	151° 49'.82 E
Delete	contour, between	32° 53'.4 S	151° 49'.4 E
		32° 53'.5 S	151° 50'.3 E
		32° 53'.0 S	151° 49'.7 E

336 AUSTRALIA - QUEENSLAND - Adolphus Channel - Depths
HMAS *Paluma*

Aus 292 [1013/2018]

Insert	depth, 19 ₅ m, and extend contour E to enclose	10° 43'.48 S	142° 40'.57 E
Delete	depth, 19 ₆ m	10° 43'.5 S	142° 40'.4 E

Aus 839 [586/2019]

Insert	depth, 19 ₅ m, and extend contour E to enclose	10° 43'.48 S	142° 40'.57 E
Delete	depth, 19 ₆ m	10° 43'.5 S	142° 40'.4 E

337 AUSTRALIA - QUEENSLAND - Great Barrier Reef - Depths
LADS Flight

Aus 834 [243/2018]

Replace	depth, 18m, with depth, 1 ₁ m	13° 27'.2 S	144° 04'.3 E
	depth, 13m, with depth, 3 ₉ m	13° 30'.4 S	144° 05'.7 E
	depth, 25m, with depth, 1 ₇ m	13° 32'.5 S	144° 07'.2 E

338 AUSTRALIA - QUEENSLAND - Murray Islands - Depth eastwards
LADS Flight

Aus 377 [192/2020]

Insert	depth, 12 ₆ m, enclosed by contour	9° 56'.17 S	144° 08'.35 E
--------	---	-------------	---------------

Aus 837 [956/2016]

Insert	depth, 12 ₆ m, enclosed by contour	9° 56'.17 S	144° 08'.35 E
--------	---	-------------	---------------

Aus 840 [192/2020]

Insert	depth, 12 ₆ m, enclosed by contour	9° 56'.17 S	144° 08'.35 E
--------	---	-------------	---------------

339 AUSTRALIA - QUEENSLAND - Platypus Rock to Surprise Rock - Light buoys*Former Notice - 289(T)/2020 is cancelled*

Maritime Safety Queensland Notice 133(T)/2020, 134(T)/2020

Aus 252 [54/2020]

Replace	light buoy with west cardinal cylindrical light buoy, VQ(9)10s, without topmark	20° 28'.6 S	149° 01'.7 E
---------	---	-------------	--------------

Delete	topmark	20° 21'.3 S	149° 01'.6 E
	topmark	20° 31'.2 S	149° 02'.3 E

Aus 253 [54/2020]

Delete	topmark	20° 21'.28 S	149° 01'.57 E
--------	---------	--------------	---------------

Aus 254 (Lindeman Island) [686/2019]

Replace	light buoy with west cardinal cylindrical light buoy, VQ(9)10s, without topmark	20° 28'.62 S	149° 01'.67 E
---------	---	--------------	---------------

Delete	topmark	20° 31'.19 S	149° 02'.28 E
--------	---------	--------------	---------------

Aus 824 [813/2019]

Replace	light buoy with west cardinal cylindrical light buoy, VQ(9)10s, without topmark	20° 28'.6 S	149° 01'.7 E
---------	---	-------------	--------------

Delete	topmark	20° 21'.3 S	149° 01'.6 E
	topmark	20° 31'.2 S	149° 02'.3 E

340 AUSTRALIA - QUEENSLAND - Skardon River - Legend

Maritime Safety Queensland Notice 138(T)/2020

Aus 301 (Skardon River) [188/2020]

Insert	legend, <i>Channel marked by buoys</i> , centred on	11° 46'.1 S	141° 59'.3 E
--------	---	-------------	--------------

341 AUSTRALIA - QUEENSLAND - Skardon River - Mooring buoys, anchorage*Former Notice - 67(T)/2020 is cancelled*

Maritime Safety Queensland Notice 142(T)/2020

Aus 301 [340/2020]

Insert	anchor berth, desig OA2, with 0.5M radius swinging circle	11° 44'.46 S	141° 43'.23 E
--------	---	--------------	---------------

Amend	light to <i>Fl.Y.5s</i>	11° 45'.1 S	141° 54'.5 E
	light to <i>Fl.Y.5s</i>	11° 45'.5 S	141° 51'.6 E

Delete	depth, 21 ₀ m	11° 44'.6 S	141° 43'.5 E
--------	--------------------------	-------------	--------------

Aus 301 (Skardon River) [340/2020]

Amend	light to <i>Fl.Y.5s</i>	11° 45'.0 S	141° 51'.8 E
	light to <i>Fl.Y.5s</i>	11° 45'.1 S	141° 54'.5 E
	light to <i>Fl.Y.5s</i>	11° 45'.3 S	141° 51'.8 E
	light to <i>Fl.Y.5s</i>	11° 45'.3 S	141° 54'.5 E
	light to <i>Fl.Y.5s</i>	11° 45'.5 S	141° 51'.6 E
	light to <i>Fl.Y.5s</i>	11° 45'.5 S	141° 54'.5 E
	light to <i>Fl.Y.5s</i>	11° 45'.7 S	141° 56'.9 E

342 AUSTRALIA - QUEENSLAND - South Trees Island - Nav aids

Australian Hydrographic Office

Aus 244 [91/2020]

Insert	accompanying block	23° 51'.07 S	151° 19'.19 E
--------	--------------------	--------------	---------------

Aus 245 [91/2020]

Insert	accompanying block	23° 51'.57 S	151° 19'.71 E
--------	--------------------	--------------	---------------

Aus 246 [467/2019]

Insert	accompanying block	23° 51'.41 S	151° 19'.61 E
--------	--------------------	--------------	---------------

343 PAPUA NEW GUINEA - Gumasila (Amphlett Group) - McGee Patch - Rock

European Space Agency

Aus 517 [55/2020]Move underwater rock
to9° 10'.35 S 150° 50'.79 E
9° 10'.20 S 150° 50'.70 E**344 PAPUA NEW GUINEA - South Cape - Depth southwestwards**HMAS *Paluma***PNG 507 [NC 20/9/2019]**Insert depth, 11_gm, and extend contour S to enclose

10° 47'.23 S 150° 10'.65 E

345 AUSTRALIA - TORRES STRAIT - Dalrymple Islet - Reef delineation

European Space Agency

Aus 840 [338/2020]

Insert accompanying block

9° 40'.5 S 143° 21'.5 E

346 INDONESIA - Java Sea - Gg Sibbalds - Depths

UKHO BA Notice 18/2256/2020

Aus 4603 (INT 603) [19/2020]

Replace depth, 8m, with depth, 3m

5° 45'.0 S 117° 07'.0 E

Aus 4708 (INT 708) [1244/2019]

Replace depth, 8m, with depth, 3m

5° 45'.0 S 117° 07'.0 E

347 AUSTRALIA - TASMANIA - Ulverstone - Light beacon

Marine and Safety Tasmania

Aus 164 [245/2020]Move light beacon
to41° 08'.67 S 146° 10'.18 E
41° 08'.723 S 146° 10'.158 E**Aus 164 (Ulverstone) [245/2020]**Move light beacon
to41° 08'.67 S 146° 10'.18 E
41° 08'.723 S 146° 10'.158 E**348 SOLOMON ISLANDS - Sealark Channel - Depth**

European Space Agency

SLB 201 [NE 21/2/2020]Insert depth, 15_gm, enclosed by contour

9° 14'.54 S 160° 13'.28 E

SLB 304 [NE 21/2/2020]Insert depth, 15_gm, and extend contour NE to enclosed by contour

9° 14'.54 S 160° 13'.28 E

Delete depth, 22m
depth, 16_gm9° 14'.2 S 160° 13'.0 E
9° 14'.6 S 160° 12'.7 E

349(T)/2020 AUSTRALIA - QUEENSLAND - Brisbane River - Town Reach - Harbour works
Maritime Safety Queensland Notice 144(T)/2020

A special light buoy, *Fl.Y.2.5s*, exists in position 27° 28'.82 S 153° 01'.86 E.

Mariners are advised to navigate with caution in the area.

Chart temporarily affected - Aus 238

350(T)/2020 AUSTRALIA - QUEENSLAND - Gold Coast Seaway - Shoaliling charted
Former Notice - 110(P)/2018 is cancelled
Maritime Safety Queensland

Cancel this notice on receipt.

Chart formerly affected - Aus 230

351(P)/2020 AUSTRALIA - QUEENSLAND - Gold Coast Seaway - Shoaliling
Maritime Safety Queensland

Latest survey shows shoaler depths than those charted may exist in the vicinity of position 27° 56'.47 S 153° 25'.24 E.

Mariners are advised to navigate with caution in the area.

Charts will be updated in due course.

Chart which will be affected - Aus 230

352(T)/2020 AUSTRALIA - QUEENSLAND - Golding Cutting - Light beacon destroyed
Maritime Safety Queensland Notice 143(T)/2020

The port lateral light beacon, *Fl.R.4s S24* (23° 54'.75 S 151° 24'.55 E), has been destroyed; a port lateral cylindrical light buoy, *Fl.R.4s*, exists in situ.

Chart temporarily affected - Aus 246

353(T)/2020 AUSTRALIA - QUEENSLAND - Townsville - Harbour works
Maritime Safety Queensland Notice 125(T)/2020

A barge is conducting pile driving works between berth No 9 (19° 15'.08 S 146° 49'.91 E) and berth No 10 (19° 15'.04 S 146° 49'.86 E).

Mariners are advised to keep clear and navigate with caution in the area.

Chart temporarily affected - Aus 257

354(T)/2020 AUSTRALIA - NORTHERN TERRITORY - Darwin - Mooring buoy relit
Former Notice - 1159(T)/2019 is cancelled
Department of Infrastructure, Planning and Logistics NT

Cancel this notice on receipt.

Chart formerly affected - Aus 24

355(T)/2020 AUSTRALIA - WESTERN AUSTRALIA - Montebello Islands - Scientific instrument northwards
RPS Group

An orange spherical light buoy, *Q(5)Y.20s*, exists in position 20° 00'.89 S 115° 21'.27 E.

Chart temporarily affected - Aus 327 - Aus 328

356(T)/2020 AUSTRALIA - WESTERN AUSTRALIA - North West Cape - FPSO off station northwards
Santos

The FPSO *Ningaloo Vision* (21° 24'.22 S 114° 05'.31 E) is off station; a direct turret mooring, with least depth 26m exists in situ.

Floating lines exist within a 0.3M radius of the direct turret mooring.

Chart temporarily affected - Aus 328 - Aus 329 - Aus 744 - Aus 4723 (INT 723) - Aus 4725 (INT 725)

357(T)/2020 AUSTRALIA - WESTERN AUSTRALIA - North West Cape - Seismic survey northwards completed
Former Notice - 1338(T)/2019 is cancelled
Woodside Energy Ltd , Australian Maritime Safety Authority

Cancel this notice on receipt.

Chart formerly affected - Aus 327 - Aus 328 - Aus 329 - Aus 742 - Aus 744 - Aus 745 - Aus 4723 (INT 723) - Aus 4725 (INT 725)

358(T)/2020 AUSTRALIA - VICTORIA - Port Campbell - Mooring buoys southwards
Deep Sea Mooring

8 yellow mooring buoys, *Fl.3s*, exist within 1M radius of 38° 53'.5 S 142° 52'.9 E.

Chart temporarily affected - Aus 349 - Aus 787

359(T)/2020 AUSTRALIA - VICTORIA - Port Phillip - Exclusion zone
Victorian Ports Corporation (Melbourne) Notice 129(T)/2020

Mariners are advised a temporary exclusion zone of 600 m will be established around the Blue Marlin (38°06'.0 S 144°53'.0 E) and Ocean Onyx, (38°06'.26 S 144°50'.38 E). Authorised vessels working in close proximity of the operations excepted.

Mariners are advised to navigate with caution and shall reduce speed having due regard to the safety of the operation.

Chart temporarily affected - Aus 143

360(T)/2020 AUSTRALIA - TASMANIA - Marion Bay - Buoy off station
Maritime and Safety Tasmania Notice M070/2020

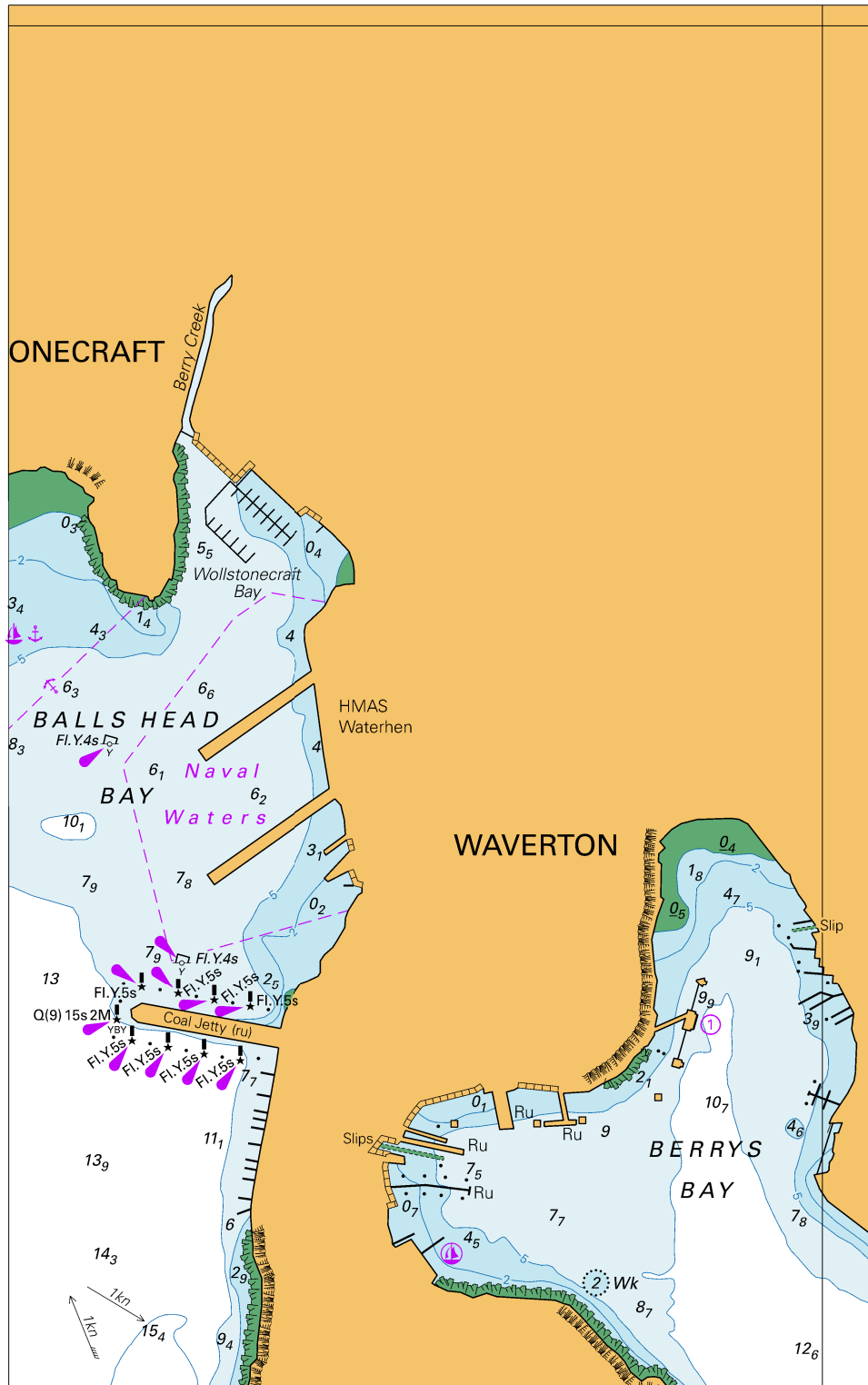
The port lateral buoy (42° 50'.41 S 147° 53'.60 E) is off station.

Chart temporarily affected - Aus 169 - Aus 171

II

HYDROGRAPHIC REPORTS

NIL

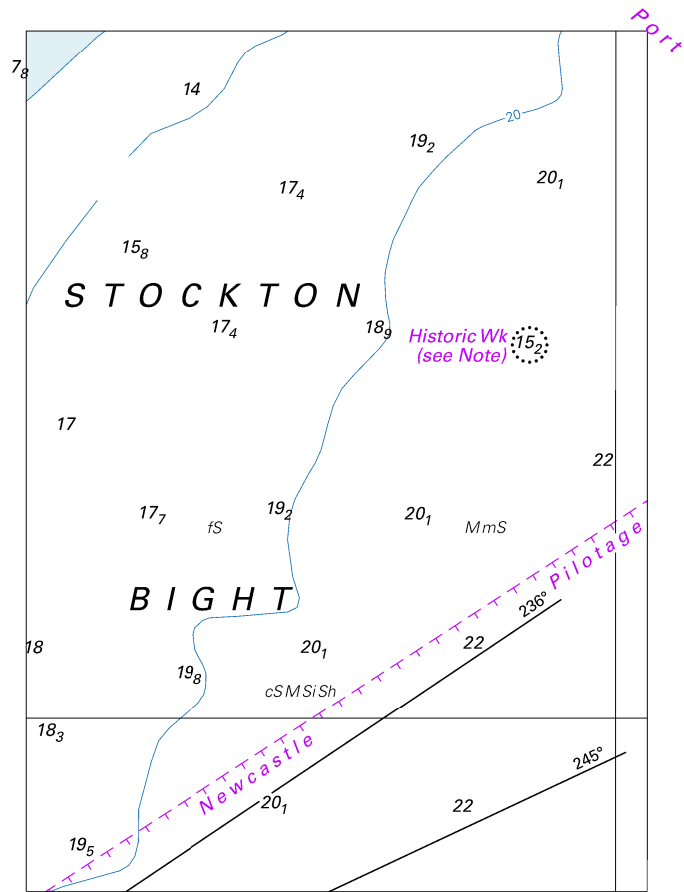


Block for chart Aus 202

© Commonwealth of Australia 2020

(125·9 x 201·1mm)

To accompany Australian Notice to Mariners 335/2020

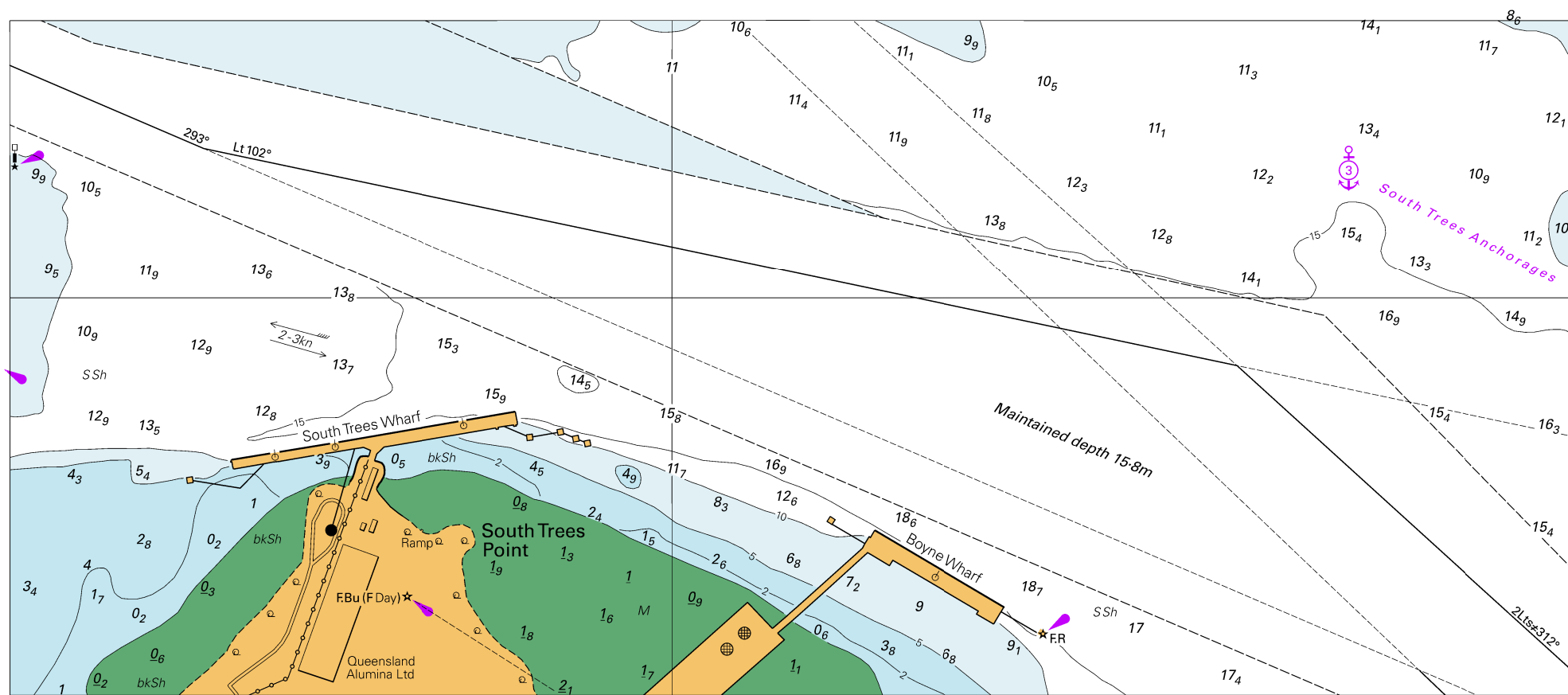


Block for chart Aus 207

(82.1 x 113.9mm)

© Commonwealth of Australia 2020

To accompany Australian Notice to Mariners 342/2020

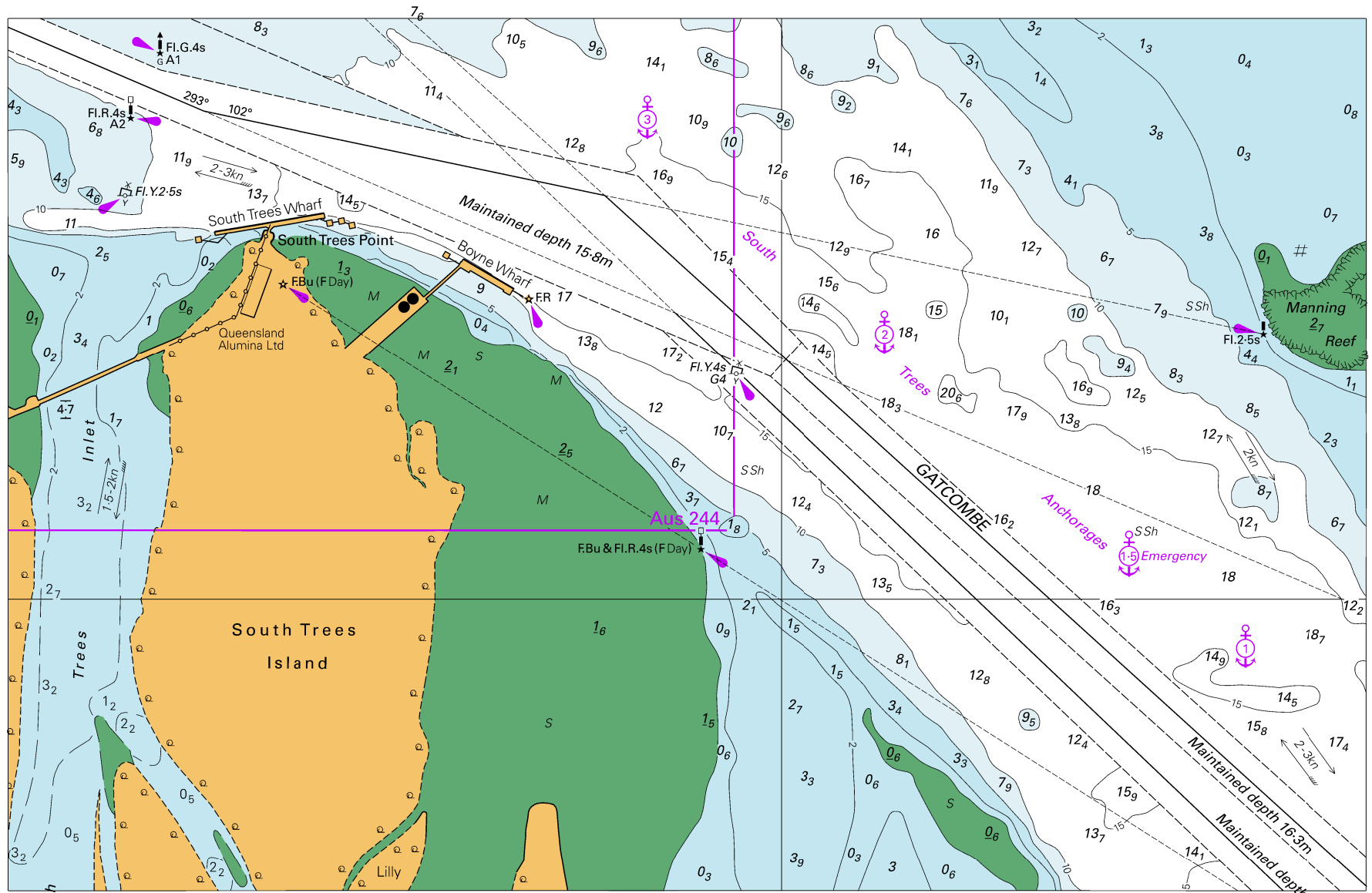


Block for chart Aus 244

© Commonwealth of Australia 2020

(259.3 x 112.0mm)

To accompany Australian Notice to Mariners 342/2020

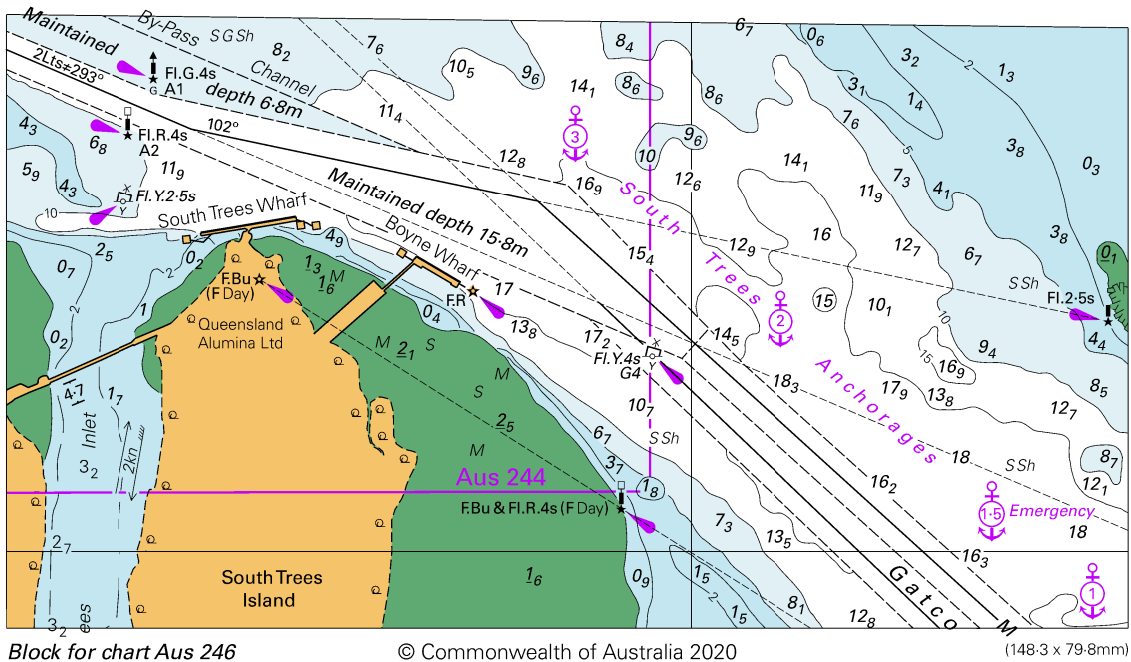


Block for chart Aus 245

© Commonwealth of Australia 2020

(233.1 x 149.7mm)

To accompany Australian Notice to Mariners 342/2020



Block for chart Aus 246

© Commonwealth of Australia 2020

(148.3 x 79.8mm)

To accompany Australian Notice to Mariners 345/2020

