



20 March 2020

Edition 6

AUSTRALIAN NOTICES TO MARINERS

Notices 221 - 264

Published fortnightly by the Australian Hydrographic Office



Australian Notices to Mariners are the authority for correcting charts and publications published by the Australian Hydrographic Office covering Australia, Papua New Guinea, Solomon Islands, Australian Antarctic Territory and Timor-Leste.

Commodore F.T. FREEMAN RAN
Hydrographer of Australia

SECTIONS.

- I. **Australian Notices to Mariners, including blocks and notes.**
- II. **Hydrographic Reports.**

SUPPLEMENTS.

- I. **Tracings**
- II. **Cumulative List of Australian Notices to Mariners.**
- III. **Cumulative List of Temporary and Preliminary Australian Notices to Mariners.**
- IV. **Temporary and Preliminary Notices in force.**

© Commonwealth of Australia 2020

This work is copyright. Apart from any use permitted under the Copyright Act 1968, no part may be reproduced by any process, adapted, communicated or commercially exploited without prior written permission from The Commonwealth represented by the Australian Hydrographic Office.

IMPORTANT NOTICE

This edition of Notices to Mariners includes all significant information affecting AHO products which the AHO has become aware of since the last edition. All reasonable efforts have been made to ensure the accuracy and completeness of the information, including third party information, on which these updates are based. The AHO regards third parties from which it receives information as reliable, however the AHO cannot verify all such information and errors may therefore exist. The AHO does not accept liability for errors in third party information.

GENERAL INSTRUCTIONS

The substance of these notices should be inserted on the charts affected.

Bearings are referred to the true compass and are reckoned clockwise from North; those relating to lights are given as seen by an observer from seaward.

Positions quoted in notices relate to WGS84 which is the horizontal datum for all charts produced by the Australian Hydrographic Office.

The range quoted for a light is its nominal range.

Depths are with reference to the chart datum of each chart. Heights are above mean high water springs or mean higher high water, as appropriate.

The capital letter (P) or (T) after the number of any notice denotes a preliminary or temporary notice respectively, which are contained separately at the end of the permanent notices.

REPORTING OF DANGERS

Mariners are particularly requested to notify the AUSTRALIAN HYDROGRAPHIC OFFICE, Locked Bag 8801 Wollongong, NSW 2500 (Fax 02-4223 6599, e-mail datacentre@hydro.gov.au or, alternatively by filling in and submitting the [Hydrographic Notes](#) forms located on the web site – www.hydro.gov.au), immediately on the discovery of new dangers or suspected dangers to navigation. For changes or defects in aids to navigation notify AusSAR (Fax 02-6230 6868 or email rccaus@amsa.gov.au).

AUTHORISED USE

Copies of Australian notices are available free of charge from the Australian Hydrographic Office (AHO) website (www.hydro.gov.au) and through the eNotices (email) service (www.hydro.gov.au/enotices/enotices.htm).

Individual Notices may be copied for the purpose of inserting Notice substance on official charts and publications. Paper copies may be printed by chart agents and distributed to customers on a cost recovery basis. Participating chart agents are listed on the AHO website as providing a 'Paper Notices to Mariners' service (www.hydro.gov.au/webapps/jsp/agents/agents-list.jsp). Copies of the notices may not be sold for profit without prior written agreement.

NUMERICAL INDEX OF NOTICES TO MARINERS

Edition No 6

Notices	Aus Chart, INT Chart, ENC Cell, AHP, BA Pubs
221	Aus 512, 547, 554, PNG 512, 547, 554
222	Aus 280, 281, 543, 546
223	Aus 812
224	Aus 806, 4643, 4644, INT 643, 644
225	Aus 193, 489, 807, 808, 4643, INT 643
226	Aus 237, 238
227	Aus 490, 818, 819, 4635, INT 635
228	Aus 230
229	Aus 816, 817
230	Aus 235, 814, 815, 816, 817
231	Aus 236
232	Aus 396, 546, 548, 4622, INT 622
233	Aus 393, 397, 398, 4622, INT 622
234	Aus 510, 513, 4621, INT 621, PNG 509
235	Aus 299
236	Aus 116
237	Aus 755
238	Aus 331
239	Aus 607
240	Aus 343, 346
241	Aus 778
242	Aus 141
243	Aus 182
244	Aus 349, 787, 4728, INT 728
245	Aus 164, 487, 799, 4644, INT 644
246	SLB 302
247(T)	Aus 200, 202
248(T)	Aus 247, 819
249(T)	Aus 837, 839
250(T)	Aus 388, 4622, INT 622
251(T)	Aus 299
252(T)	Aus 293, 299
253(T)	Aus 314, 321, 4721, 4722, INT 721, 722
254(T)	Aus 310, 4721, INT 721
255(T)	Aus 328, 4723, INT 723
256(T)	Aus 325, 326
257(T)	Aus 324, 325, 4722, INT 722
258(T)	Aus 357, 487, 805
259(T)	Aus 357, 487
260(T)	Aus 349, 787
261(T)	Aus 143, 144, 155, 158
262(T)	Aus 154, 155
263(T)	Aus 143, 144, 158
264(T)	Aus 143, 158

NUMERICAL INDEX OF CHARTS AFFECTED

Edition No 6

Aus Chart	Notices
Aus 116	236
Aus 141	242
Aus 143	261(T), 263(T), 264(T)
Aus 144	261(T), 263(T)
Aus 154	262(T)
Aus 155	261(T), 262(T)
Aus 158	261(T), 263(T), 264(T)
Aus 164	245
Aus 182	243
Aus 193	225
Aus 200	247(T)
Aus 202	247(T)
Aus 230	228
Aus 235	230
Aus 236	231
Aus 237	226
Aus 238	226
Aus 247	248(T)
Aus 280	222
Aus 281	222
Aus 293	252(T)
Aus 299	235, 251(T), 252(T)
Aus 310	254(T)
Aus 314	253(T)
Aus 321	253(T)
Aus 324	257(T)
Aus 325	256(T), 257(T)
Aus 326	256(T)
Aus 328	255(T)
Aus 331	238
Aus 343	240
Aus 346	240
Aus 349	244, 260(T)
Aus 357	258(T), 259(T)
Aus 388	250(T)
Aus 393	233
Aus 396	232
Aus 397	233
Aus 398	233
Aus 487	245, 258(T), 259(T)
Aus 489	225
Aus 490	227
Aus 510	234
Aus 512	221
Aus 513	234
Aus 543	222
Aus 546	222, 232
Aus 547	221
Aus 548	232
Aus 554	221
Aus 607	239
Aus 755	237
Aus 778	241
Aus 787	244, 260(T)

Aus Chart	Notices
Aus 799	245
Aus 805	258(T)
Aus 806	224
Aus 807	225
Aus 808	225
Aus 812	223
Aus 814	230
Aus 815	230
Aus 816	229, 230
Aus 817	229, 230
Aus 818	227
Aus 819	227, 248(T)
Aus 837	249(T)
Aus 839	249(T)
Aus 4621	234
Aus 4622	232, 233, 250(T)
Aus 4635	227
Aus 4643	224, 225
Aus 4644	224, 245
Aus 4721	253(T), 254(T)
Aus 4722	253(T), 257(T)
Aus 4723	255(T)
Aus 4728	244
PNG 509	234
PNG 512	221
PNG 547	221
PNG 554	221
SLB 302	246

INT Chart	Notices
INT 621	234
INT 622	232, 233, 250(T)
INT 635	227
INT 643	224, 225
INT 644	224, 245
INT 721	253(T), 254(T)
INT 722	253(T), 257(T)
INT 723	255(T)
INT 728	244

221 AUSTRALIA - Products - New Charts, New Editions, Withdrawn Charts

Australian Hydrographic Office , UKHO

New Charts

<i>Chart</i>	<i>Title and Geographical limits</i>	<i>Scale</i>	<i>Publication Date</i>	<i>Remarks</i>
PNG 512	Papua New Guinea - North East Coast - Misima Island to Bonvouloir Islands 10° 09'·00 S – 11° 01'·83 S 151° 51'·00 E – 153° 15'·45 E	1:150 000	20 March 2020	Adoption of Papua New Guinea chart numbering. Replaces Aus 512. General updating throughout; including latest bathymetric data.
PNG 547	Papua New Guinea - New Britain - North Coast - Bangula Bay to Eleonora Bay 4° 44'·60 S – 5° 38'·00 S 149° 35'·80 E – 151° 07'·00 E	1:150 000	20 March 2020	Adoption of Papua New Guinea chart numbering. Replaces Aus 547. General updating throughout.
PNG 554	Papua New Guinea - New Britain - New Ireland - Cape St George to Rabaul 3° 44'·7 S – 5° 09'·5 S 152° 02'·6 E – 152° 56'·0 E	1:150 000	20 March 2020	Adoption of Papua New Guinea chart numbering. Replaces Aus 554. General updating throughout.

New Electronic Navigation Chart (Aus ENC)

<i>Cell Name</i>	<i>Title</i>	<i>Publication Date</i>	<i>Remarks</i>
NIL			

New Editions and Withdrawn Charts

<i>Chart</i>	<i>Title</i>	<i>Scale</i>	<i>Publication Date</i>	<i>Remarks</i>
NIL				

Charts withdrawn

<i>Chart</i>	<i>Remarks</i>
Aus 512	On publication of new chart PNG 512
Aus 547	On publication of new chart PNG 547
Aus 554	On publication of new chart PNG 554

Admiralty publication

<i>NP No</i>	<i>Title</i>	<i>Date</i>	<i>Remarks</i>
NP282(2)	Admiralty List of Radio Signals. Radio Aids to Navigation, Differential GPS (DGPS), Legal Time, Radio Time Signals and Electronic Position Fixing System. The Americas, Far East and Oceania. Volume 2 First Edition 2020.	26/3/2020	The 2019/2020 Edition of NP282(2) is cancelled.

Chart permanently withdrawn

Charts listed above as withdrawn no longer meet chart carriage requirements and should be marked as "superseded" and replaced with the new chart/ new edition listed prior to passage through the area covered by the new chart.

When placing orders with a chart agent between notice of forthcoming edition and its publication, mariners should advise whether their order pertains to the current edition or the new edition.

For further details refer to the AHO website at www.hydro.gov.au for new edition and new chart stock arrival information.

222 AUSTRALIA - Products - New Charts and New Editions to be published shortly

Australian Hydrographic Office

New Charts to be published shortly

<i>Chart</i>	<i>Title</i>	<i>Scale</i>	<i>Expected Publication Date</i>	<i>Remarks</i>
PNG 543	Papua New Guinea - New Ireland - New Hanover - Fangalawa Bay to Cape Matanalem	1:150 000	3 April 2020	Adoption of Papua New Guinea chart numbering. Replaces Aus 543. General updating throughout.
PNG 546	Papua New Guinea - New Britain - North Coast - Cape Lambert to Bangula Bay	1:150 000	3 April 2020	Adoption of Papua New Guinea chart numbering. Replaces Aus 546. General updating throughout.

New Editions to be published shortly

<i>Chart</i>	<i>Title</i>	<i>Scale</i>	<i>Expected Publication Date</i>	<i>Remarks</i>
NIL				

Charts to be withdrawn

<i>Chart</i>	<i>Remarks</i>
Aus 543	On publication of new chart PNG 543
Aus 546	On publication of new chart PNG 546

Charts to be withdrawn without replacement 17 April 2020

<i>Chart</i>	<i>Title</i>	<i>Scale</i>	<i>Publication Date</i>
Aus 280 Edition 5	Australia - East Coast - Queensland - Plans in Queensland (Sheet 3) Plans: Magpie Reef to Eden Reef Flinders Group	1:75 000 1:50 000	22 February 2019
Aus 281 Edition 3	Australia - East Coast - Queensland - First Three Mile Opening to Cape Direction	1:75 000	22 February 2019

223 AUSTRALIA - NEW SOUTH WALES - Coffs Harbour - Light withdrawn

Australian Hydrographic Office

Aus 812 [NE 21/9/2018]

Delete	light with legend, Aero Iso.R.2s Tr (310)	30° 18'.7 S	153° 07'.9 E
--------	---	-------------	--------------

224 AUSTRALIA - NEW SOUTH WALES - Green Cape - Light

Australian Maritime Safety Authority Final ATH 6/2020

Aus 806 [132/2020]

Amend	light range to 15M	37° 15'.7 S	150° 03'.0 E
-------	--------------------	-------------	--------------

Aus 4643 (INT 643) [1193/2019]

Amend	light range to 15M	37° 15'.7 S	150° 03'.0 E
-------	--------------------	-------------	--------------

Aus 4644 (INT 644) [1319/2019]

Amend	light range to 15M	37° 15'.7 S	150° 03'.0 E
-------	--------------------	-------------	--------------

225 AUSTRALIA - NEW SOUTH WALES - Point Perpendicular - Light range amended

Australian Maritime Safety Authority Final ATH 9/2020

Aus 193 [6/2020]

Amend light range to 15M 35° 05'.65 S 150° 48'.25 E

Aus 489 [5/2020]

Amend light range to 15M 35° 05'.6 S 150° 48'.3 E

Aus 807 [1303/2019]

Amend light range to 15M 35° 05'.6 S 150° 48'.3 E

Aus 808 [6/2020]

Amend light range to 15M 35° 05'.6 S 150° 48'.3 E

Aus 4643 (INT 643) [224/2020]

Amend light range to 15M 35° 05'.6 S 150° 48'.3 E

226 AUSTRALIA - QUEENSLAND - Brisbane River - Upper Lytton Reach - Infrastructure

Maritime Safety Queensland

Aus 237 [757/2019]

Insert accompanying block 27° 25'.1 S 153° 08'.1 E

Aus 238 [90/2020]

Insert accompanying block 27° 25'.2 S 153° 08'.4 E

227 AUSTRALIA - QUEENSLAND - Capricorn Group - Depths

LADS Flight

Aus 490 [1306/2019]Insert depth, 19₇m, enclosed by contour 23° 21'.14 S 151° 41'.01 Edepth, 9₉m, enclosed by contour 23° 30'.62 S 151° 48'.91 E

depth, 8m, and extend 10m contour NW to enclose 23° 32'.54 S 151° 40'.63 E

depth, 21₉m, enclosed by contour 23° 35'.77 S 151° 55'.39 Edepth, 19₆m, semi enclosed by contour to NW 23° 53'.47 S 152° 23'.46 EDelete depth, 28₆m 23° 21'.1 S 151° 41'.0 Edepth, 8₅m 23° 32'.9 S 151° 41'.2 E**Aus 818 [1306/2019]**Insert depth, 19₆m, enclosed by contour 23° 53'.47 S 152° 23'.46 E**Aus 819 [1306/2019]**Insert depth, 19₇m, enclosed by contour 23° 21'.14 S 151° 41'.01 Edepth, 9₉m, enclosed by contour 23° 30'.62 S 151° 48'.91 Edepth, 8₃m, enclosed by contour 23° 31'.28 S 151° 43'.42 E

depth, 8m, and extend 10m contour NW to enclose 23° 32'.54 S 151° 40'.63 E

depth, 21₉m, enclosed by contour 23° 35'.77 S 151° 55'.39 Edepth, 6₁m, semi enclosed by contour to NW 23° 50'.86 S 152° 22'.27 Edepth, 19₆m, enclosed by contour 23° 53'.47 S 152° 23'.46 EDelete depth, 8₅m 23° 32'.9 S 151° 41'.2 E**Aus 4635 (INT 635) [1193/2019]**

Insert contour, between 23° 35'.9 S 151° 58'.4 E

23° 35'.7 S 151° 55'.1 E

23° 37'.2 S 151° 58'.2 E

228 AUSTRALIA - QUEENSLAND - Gold Coast Seaway - South Stradbroke Island - Light buoys

Maritime Safety Queensland Notice 65/2020

Aus 230 [138/2020]

Insert	starboard lateral conical light buoy, <i>Fl. G.3s</i> , without topmark	27° 54'.190 S	153° 25'.208 E
	starboard lateral conical light buoy, <i>Fl. G.3s</i> , without topmark	27° 54'.327 S	153° 25'.193 E
	starboard lateral conical light buoy, <i>Fl. G.3s</i> , without topmark	27° 54'.463 S	153° 25'.170 E

229 AUSTRALIA - QUEENSLAND - Hervey Bay - Prohibited area, depths

Maritime Safety Queensland Notice 333/2019

Aus 816 [1192/2019]

Insert	accompanying block	24° 51'.0 S	153° 06'.0 E
--------	--------------------	-------------	--------------

Aus 817 [1239/2019]

Insert	accompanying block A	24° 50'.0 S	152° 50'.0 E
	accompanying block B	24° 51'.0 S	153° 03'.0 E

230 AUSTRALIA - QUEENSLAND - Mermaid Beach to Seventy-Five Mile Beach - Fish aggregating devices eastwards

Department of Agriculture and Fisheries

Aus 235 [1239/2019]

Insert	special conical light buoy, <i>Fl. Y.3s FAD</i> , without topmark	26° 44'.98 S	153° 27'.66 E
	out of position special conical light buoy, <i>Fl. Y.3s FAD</i> , without topmark	26° 59'.65 S	153° 33'.59 E

Aus 814 [190/2020]

Insert	special conical light buoy, <i>Fl. Y.3s FAD</i> , without topmark	26° 59'.65 S	153° 33'.59 E
	special conical light buoy, <i>Fl. Y.3s FAD</i> , without topmark	27° 11'.10 S	153° 36'.89 E
	special conical light buoy, <i>Fl. Y.3s FAD</i> , without topmark	27° 23'.45 S	153° 41'.19 E
	special conical light buoy, <i>Fl. Y.3s FAD</i> , without topmark	27° 41'.28 S	153° 36'.83 E
	special conical light buoy, <i>Fl. Y.3s FAD</i> , without topmark	27° 44'.37 S	153° 44'.31 E
	special conical light buoy, <i>Fl. Y.3s FAD</i> , without topmark	27° 55'.03 S	153° 38'.27 E
	special conical light buoy, <i>Fl. Y.3s FAD</i> , without topmark	27° 55'.46 S	153° 37'.57 E
	special conical light buoy, <i>Fl. Y.3s FAD</i> , without topmark	27° 56'.04 S	153° 38'.33 E
	special conical light buoy, <i>Fl. Y.3s FAD</i> , without topmark	28° 02'.98 S	153° 39'.40 E

Aus 815 [133/2020]

Insert	special conical light buoy, <i>Fl. Y.3s FAD</i> , without topmark	25° 41'.27 S	153° 22'.62 E
	special conical light buoy, <i>Fl. Y.3s FAD</i> , without topmark	26° 22'.70 S	153° 14'.30 E
	special conical light buoy, <i>Fl. Y.3s FAD</i> , without topmark	26° 34'.96 S	153° 18'.77 E
	special conical light buoy, <i>Fl. Y.3s FAD</i> , without topmark	26° 35'.04 S	153° 20'.83 E
	special conical light buoy, <i>Fl. Y.3s FAD</i> , without topmark	26° 36'.12 S	153° 25'.88 E
	special conical light buoy, <i>Fl. Y.3s FAD</i> , without topmark	26° 44'.98 S	153° 27'.66 E
	special conical light buoy, <i>Fl. Y.3s FAD</i> , without topmark	26° 59'.65 S	153° 33'.59 E

Aus 816 [229/2020]

Insert	special conical light buoy, <i>Fl. Y.3s FAD</i> , without topmark	25° 41'.27 S	153° 22'.62 E
--------	---	--------------	---------------

Aus 817 [229/2020]

Insert	special conical light buoy, <i>Fl. Y.3s FAD</i> , without topmark	25° 41'.27 S	153° 22'.62 E
--------	---	--------------	---------------

231 AUSTRALIA - QUEENSLAND - Moreton Bay - Brisbane Road - Infrastructure

Maritime Safety Queensland Notice 64/2020

Aus 236 [189/2020]

Insert	continuous line, between	27° 21'.23 S	153° 07'.41 E
		27° 21'.04 S	153° 07'.52 E

232 PAPUA NEW GUINEA - Bangula Bay to Eleonora Bay - Chart name

Australian Hydrographic Office

Aus 396 [93/2020]

Amend	legend to PNG 547	5° 37'.8 S	151° 05'.9 E
	legend to PNG 547	5° 43'.7 S	150° 15'.3 E

Aus 546 [94/2020]

Amend	legend to <i>Adjoining Chart PNG 547</i> in W border	5° 07'.5 S	150° 49'.2 E
-------	--	------------	--------------

Aus 548 [1308/2019]

Amend	legend to <i>Adjoining Chart PNG 547</i> in E border	5° 12'.5 S	149° 43'.9 E
-------	--	------------	--------------

Aus 4622 (INT 622) [94/2020]

Amend	legend to PNG 547	4° 47'.4 S	150° 54'.5 E
-------	-------------------	------------	--------------

233 PAPUA NEW GUINEA - Cape St George to Rabaul - Chart name

Australian Hydrographic Office

Aus 393 [143/2020]

Amend	legend to PNG 554	2° 18'.8 S	152° 10'.4 E
	legend to PNG 554	3° 45'.0 S	152° 55'.0 E

Aus 397 [95/2020]

Amend	legend to PNG 554	4° 28'.9 S	154° 32'.4 E
	legend to PNG 554	5° 09'.3 S	152° 55'.0 E

Aus 398 [143/2020]

Amend	legend to PNG 554	3° 45'.0 S	152° 55'.0 E
	legend to PNG 554	3° 45'.0 S	155° 12'.8 E

Aus 4622 (INT 622) [232/2020]

Amend	legend to PNG 554	3° 46'.3 S	152° 08'.4 E
-------	-------------------	------------	--------------

234 PAPUA NEW GUINEA - Misima Island to Bonvouloir Islands - Chart name

Australian Hydrographic Office

Aus 510 [144/2020]

Amend	legend to <i>Adjoining Chart PNG 512</i> in N border	10° 54'.3 S	152° 27'.5 E
-------	--	-------------	--------------

Aus 513 [1141/2019]

Amend	legend to <i>Adjoining Chart PNG 512</i> in S border	10° 16'.0 S	152° 07'.5 E
-------	--	-------------	--------------

Aus 4621 (INT 621) [144/2020]

Amend	legend to PNG 512	10° 10'.8 S	153° 09'.9 E
-------	-------------------	-------------	--------------

PNG 509 [1240/2019]

Amend	legend to <i>Adjoining Chart PNG 512</i> in E border	10° 27'.5 S	151° 55'.8 E
-------	--	-------------	--------------

235 AUSTRALIA - TORRES STRAIT - Ellis Channel - Hovell Bar - Light buoy

Australian Hydrographic Office

Aus 299 [872/2019]

Move	light buoy	10° 34'.05 S	142° 15'.47 E
	to	10° 34'.043 S	142° 15'.438 E

236 AUSTRALIA - WESTERN AUSTRALIA - Flinders Bay - Light buoys

Leeuwin Ocean Adventure Foundation , Department of Transport WA

Aus 116 (Flinders Bay) [NE 9/8/2019]

Insert	special spar light buoy, <i>Fl. Y.4s</i> , without topmark	34° 18'.75 S	115° 14'.00 E
	special spar light buoy, <i>Fl. Y.4s</i> , without topmark	34° 18'.75 S	115° 13'.45 E
	special spar light buoy, <i>Fl. Y.4s</i> , without topmark	34° 19'.27 S	115° 12'.35 E
	special spar light buoy, <i>Fl. Y.4s</i> , without topmark	34° 19'.30 S	115° 14'.00 E
	special spar light buoy, <i>Fl. Y.4s</i> , without topmark	34° 19'.86 S	115° 12'.35 E
	special spar light buoy, <i>Fl. Y.4s</i> , without topmark	34° 19'.86 S	115° 14'.00 E
	special spar light buoy, <i>Fl. Y.4s</i> , without topmark	34° 20'.40 S	115° 12'.35 E
	special spar light buoy, <i>Fl. Y.4s</i> , without topmark	34° 20'.40 S	115° 13'.16 E
	special spar light buoy, <i>Fl. Y.4s</i> , without topmark	34° 20'.40 S	115° 14'.00 E

237 AUSTRALIA - WESTERN AUSTRALIA - Geographe Bay - Light buoys

Leeuwin Ocean Adventure Foundation , Department of Transport WA

Aus 755 [18/2020]

Insert	special spar light buoy, <i>Fl. Y.4s</i> , without topmark	33° 32'.30 S	115° 06'.30 E
	special spar light buoy, <i>Fl. Y.4s</i> , without topmark	33° 32'.74 S	115° 24'.59 E
	special spar light buoy, <i>Fl. Y.4s</i> , without topmark	33° 32'.96 S	115° 06'.86 E
	special spar light buoy, <i>Fl. Y.4s</i> , without topmark	33° 33'.01 S	115° 05'.17 E
	special spar light buoy, <i>Fl. Y.4s</i> , without topmark	33° 33'.50 S	115° 04'.40 E
	special spar light buoy, <i>Fl. Y.4s</i> , without topmark	33° 33'.55 S	115° 23'.88 E
	special spar light buoy, <i>Fl. Y.4s</i> , without topmark	33° 33'.60 S	115° 07'.40 E
	special spar light buoy, <i>Fl. Y.4s</i> , without topmark	33° 33'.87 S	115° 25'.98 E
	special spar light buoy, <i>Fl. Y.4s</i> , without topmark	33° 33'.93 S	115° 06'.74 E
	special spar light buoy, <i>Fl. Y.4s</i> , without topmark	33° 34'.34 S	115° 05'.90 E
	special spar light buoy, <i>Fl. Y.4s</i> , without topmark	33° 34'.43 S	115° 22'.95 E
	special spar light buoy, <i>Fl. Y.4s</i> , without topmark	33° 34'.78 S	115° 27'.10 E
	special spar light buoy, <i>Fl. Y.4s</i> , without topmark	33° 35'.49 S	115° 24'.31 E
	special spar light buoy, <i>Fl. Y.4s</i> , without topmark	33° 36'.40 S	115° 25'.50 E
	special spar light buoy, <i>Fl. Y.4s</i> , without topmark	33° 36'.40 S	115° 13'.00 E
	special spar light buoy, <i>Fl. Y.4s</i> , without topmark	33° 36'.40 S	115° 12'.00 E
	special spar light buoy, <i>Fl. Y.4s</i> , without topmark	33° 37'.59 S	115° 12'.00 E
	special spar light buoy, <i>Fl. Y.4s</i> , without topmark	33° 37'.59 S	115° 13'.00 E
	special spar light buoy, <i>Fl. Y.4s</i> , without topmark	33° 38'.40 S	115° 12'.00 E
	special spar light buoy, <i>Fl. Y.4s</i> , without topmark	33° 38'.40 S	115° 13'.00 E

238 AUSTRALIA - WESTERN AUSTRALIA - Peron Peninsula - Denham - Wreck

Transport WA Notice WA661/4/2020

Aus 331 (Denham) [1127/2018]

Insert	stranded wreck	25° 56'.10 S	113° 32'.77 E
--------	----------------	--------------	---------------

239 INDIAN OCEAN - Cocos (Keeling) Islands - South Keeling Islands - West Island - Buoy

Viva Energy Australia

Aus 607 [652/2019]

Replace	buoy with special spar buoy without topmark	12° 07'.80 S	96° 50'.47 E
---------	---	--------------	--------------

240 AUSTRALIA - SOUTH AUSTRALIA - Kangaroo Island - Vennachar Point - Nav aids

CSIRO

Aus 343 [22/2020]

Replace	buoy with special conical light buoy, <i>Fl. Y.6s</i> , without topmark	35° 50'.2 S	136° 26'.8 E
---------	---	-------------	--------------

Aus 346 [393/2016]

Replace	buoy with special conical light buoy, <i>Fl. Y.6s</i> , without topmark	35° 50'.2 S	136° 26'.8 E
---------	---	-------------	--------------

241 AUSTRALIA - SOUTH AUSTRALIA - Yarraville Shoals - Depths
HydroSurvey Australia

Aus 778 (Yarraville Shoals) [1251/2019]

Insert	depth, 20 ₈ m	33° 15'.523 S	137° 32'.717 E
	depth, 21 ₈ m	33° 16'.029 S	137° 32'.644 E
	depth, 20 ₄ m	33° 16'.233 S	137° 32'.700 E
Replace	depth, 19 ₈ m, and enclosing contour with depth, 20 ₂ m	33° 16'.27 S	137° 32'.42 E
	depth, 19 ₇ m, with depth, 20m	33° 16'.53 S	137° 32'.47 E
Amend	legend to (UTM-53)	33° 18'.24 S	137° 32'.69 E
Delete	depth, 21 ₂ m	33° 15'.65 S	137° 32'.68 E
	depth, 20m, and enclosing contour	33° 16'.17 S	137° 32'.55 E
	depth, 19 ₈ m, and enclosing contour	33° 16'.42 S	137° 32'.62 E
	depth, 20m, and enclosing contour	33° 16'.70 S	137° 32'.35 E

242 AUSTRALIA - VICTORIA - Apollo Bay Boat Harbour - Light buoy
Colac Otway Shire Notice 189/2019

Aus 141 (Apollo Bay Boat Harbour) [1206/2019]

Amend	light buoy to <i>Iso.R.2s</i>	38° 45'.45 S	143° 40'.65 E
-------	-------------------------------	--------------	---------------

243 AUSTRALIA - VICTORIA - Lakes Entrance - Depth
Gippsland Ports

Aus 182 (Lakes Entrance) [153/2020]

Insert	depth, 2m, enclosed by contour	37° 53'.920 S	147° 56'.738 E
--------	--------------------------------	---------------	----------------

244 AUSTRALIA - VICTORIA - Port Campbell - Wells; restricted areas southwards
TEK-Ocean Energy Services Pty Ltd , NOPSEMA

Aus 349 [1212/2019]

Insert	accompanying block	39° 04'.0 S	142° 57'.0 E
--------	--------------------	-------------	--------------

Aus 787 [268/2019]

Insert	danger circle with legend <i>Artisan-1 Well</i> , centred on	38° 53'.49 S	142° 52'.95 E
	restricted area with radius 0.35M, centred on	38° 53'.49 S	142° 52'.95 E

Aus 4728 (INT 728) [22/2020]

Insert	danger circle, centred on	38° 53'.5 S	142° 52'.9 E
--------	---------------------------	-------------	--------------

245 AUSTRALIA - TASMANIA - Mersey Bluff - Light range amended
Australian Maritime Safety Authority Final ATH 11/2020

Aus 164 [1008/2019]

Amend	light range to 14/9M	41° 09'.53 S	146° 21'.33 E
-------	----------------------	--------------	---------------

Aus 487 [1320/2019]

Amend	light range to 14/9M	41° 09'.5 S	146° 21'.3 E
-------	----------------------	-------------	--------------

Aus 799 [654/2019]

Amend	light range to 14/9M	41° 09'.5 S	146° 21'.3 E
-------	----------------------	-------------	--------------

Aus 4644 (INT 644) [224/2020]

Amend	light range to 14/9M	41° 09'.5 S	146° 21'.3 E
-------	----------------------	-------------	--------------

246 **SOLOMON ISLANDS - New Georgia Island - Munda Point - Light beacon; navline**
UKHO

SLB 302 [NE 21/2/2020]

Amend light beacon to *Fl(3)5M*
legend to *053°*

8° 20'.2 S	157° 13'.8 E
8° 22'.5 S	157° 10'.3 E

247(T)/2020 AUSTRALIA - NEW SOUTH WALES - Port Jackson - Berrys Bay - Jetties ruined

Transport for NSW , NSW Roads and Maritime Services

Jetties and piers are ruined, and partially submerged obstructions may exist in an area bounded by the coast and the following positions:

33° 50'.70 S 151° 11'.69 E

33° 50'.70 S 151° 11'.76 E

33° 50'.67 S 151° 11'.85 E

33° 50'.63 S 151° 11'.84 E.

A west cardinal light beacon, Q(9)15s, exists in position 33° 50'.59 S 151° 11'.50 E.

Mariners are advised to navigate with caution in the area.

Chart temporarily affected - Aus 200 - Aus 202

248(T)/2020 AUSTRALIA - QUEENSLAND - Fitzroy River - Light buoys off station

Maritime Safety Queensland Notice 77/2020

Due to flooding in the Fitzroy River (23° 31'.0 S 150° 50'.0 E), light buoys may be off station and sand bars may have moved.

Mariners are advised to navigate with caution in the area.

Chart temporarily affected - Aus 247 - Aus 819

249(T)/2020 AUSTRALIA - QUEENSLAND - Richardson Reef to Newman Reef - Scientific instruments

Maritime Safety Queensland

A scientific instrument marked by an orange buoy exists in position 10° 07'.33 S 143° 02'.20 E.

A scientific instrument marked by a yellow buoy exists in position 10° 03'.33 S 143° 10'.18 E.

Chart temporarily affected - Aus 837 - Aus 839

250(T)/2020 PAPUA NEW GUINEA - Cape Gourdon - Light restored

Former Notice - 1330(T)/2019 is cancelled

National Maritime Safety Authority PNG Coastal Navigation Warning 2/2020

Cancel this notice on receipt.

Chart formerly affected - Aus 388 - Aus 4622 (INT 622)

251(T)/2020 AUSTRALIA - TORRES STRAIT - Ellis Channel - Hovell Bar - Light buoy restored

Former Notice - 1270(T)/2019 is cancelled

Maritime Safety Queensland Notice 66(T)/2020

Cancel this notice on receipt.

Chart formerly affected - Aus 299

252(T)/2020 AUSTRALIA - TORRES STRAIT - Thursday Island - Harbour works

Maritime Safety Queensland

Barge *PMG 121* and support vessel *PMG Sailfish* are conducting harbour works in the vicinity of position 10° 35'.19 S 142° 13'.20 E.

The barge has deployed anchors marked by special buoys and yellow lights.

Vessels are to keep 200m clear of the barge at all times.

Mariners are advised to navigate with caution in the area.

Chart temporarily affected - Aus 293 - Aus 299

253(T)/2020 AUSTRALIA - TIMOR SEA - Timor Sea - Sahul Banks - Seismic survey completed*Former Notice - 167(T)/2020 is cancelled*

Australian Maritime Safety Authority

Cancel this notice on receipt.

Chart formerly affected - Aus 314 - Aus 321 - Aus 4721 (INT 721) - Aus 4722 (INT 722)**254(T)/2020 INDONESIA - Selaru - Scientific instruments**

RPS Group

Scientific instruments exist as follows:

<i>Position</i>	<i>Remarks</i>
8° 00'.55 S 131° 15'.11 E	20m below surface
8° 00'.79 S 131° 13'.26 E	20m below surface
8° 03'.70 S 131° 14'.69 E	60m below surface
8° 06'.60 S 131° 14'.95 E	100m below surface
8° 07'.03 S 131° 14'.99 E	125m below surface
8° 07'.09 S 131° 14'.98 E	150m below surface
8° 07'.36 S 131° 15'.01 E	200m below surface
8° 08'.44 S 131° 15'.11 E	275m below surface
8° 10'.28 S 131° 16'.11 E	395m below surface
8° 11'.12 S 131° 16'.98 E	770m below surface
8° 12'.81 S 131° 18'.73 E	1170m below surface
8° 18'.42 S 131° 19'.71 E	1530m below surface
8° 25'.90 S 131° 18'.21 E	1410m below surface
8° 32'.81 S 131° 15'.19 E	1145m below surface
8° 42'.24 S 131° 04'.59 E	945m below surface
8° 54'.76 S 130° 48'.51 E	710m below surface
9° 09'.26 S 130° 25'.23 E	light buoy, Q(5)Y.20s.

Chart temporarily affected - Aus 310 - Aus 4721 (INT 721)**255(T)/2020 AUSTRALIA - WESTERN AUSTRALIA - Montebello Islands - Drill rig northwestwards***Former Notice - 209(T)/2020 is cancelled*

Australian Maritime Safety Authority Auscoast Warning 130/2020

Drill rig *Valaris DPS-1* is conducting drilling operations in position 19° 52'.30 S 115° 09'.00 E.**Chart temporarily affected - Aus 328 - Aus 4723 (INT 723)****256(T)/2020 AUSTRALIA - WESTERN AUSTRALIA - Rowley Shoals - Scientific instruments recovered***Former Notice - 299(T)/2019 is cancelled*

University of Western Australia

Cancel this notice on receipt.

Chart formerly affected - Aus 325 - Aus 326**257(T)/2020 AUSTRALIA - WESTERN AUSTRALIA - Rowley Shoals - Scientific instruments recovered***Former Notice - 763(T)/2017 is cancelled*

Macquarie University

Cancel this notice on receipt.

Chart formerly affected - Aus 324 - Aus 325 - Aus 4722 (INT 722)

258(T)/2020 AUSTRALIA - VICTORIA - Gippsland Lakes - Seismic survey southeastwards

Former Notice - 1342(T)/2019 is cancelled

CGG , Australian Maritime Safety Authority Auscoast Warnings 126/2020, 133/2020

MV *Geo Coral*, with a 7300m towed array, and MV *Oceanic Champion* along with support vessels *Ocean Dynasty*, *Maria-G*, *Dell Richey II* and *Northern Star* are conducting a seismic survey in an area bounded by the following positions:

39° 06'.99 S 149° 00'.08 E
 38° 31'.54 S 149° 38'.33 E
 38° 20'.90 S 149° 38'.55 E
 37° 57'.02 S 148° 05'.07 E
 38° 12'.34 S 147° 36'.83 E
 38° 30'.69 S 147° 29'.97 E
 38° 36'.53 S 147° 54'.64 E
 38° 44'.59 S 147° 48'.36 E.

Mariners are advised to navigate with caution in the area. 6M clearance requested.

Chart temporarily affected - Aus 357 - Aus 487 - Aus 805

259(T)/2020 AUSTRALIA - VICTORIA - Golden Beach - Survey operations

Fugro

On or about 23 March, vessel MV *Silver Star*, with a 300m towed array, will be conducting survey operations in an area bounded by the coast and the following positions:

38° 15'.5 S 147° 20'.7 E
 38° 18'.2 S 147° 24'.7 E
 38° 14'.7 S 147° 28'.5 E
 38° 12'.3 S 147° 24'.7 E.

The vessel will display appropriate lights and shapes.

Mariners are advised to navigate with caution in the area. 500m clearance requested.

Chart temporarily affected - Aus 357 - Aus 487

260(T)/2020 AUSTRALIA - VICTORIA - Port Campbell - Seismic survey completed

Former Notice - 215(T)/2020 is cancelled

Australian Maritime Safety Authority

Cancel this notice on receipt.

Chart formerly affected - Aus 349 - Aus 787

261(T)/2020 AUSTRALIA - VICTORIA - Port Phillip - South Channel - Dredging operations

Victorian Ports Corporation (Melbourne) Notice 97(T)/2020

The dredge *Brisbane* and support vessels *John Norgate* and *Qua* are conducting dredging operations in South Channel (38° 18'.8 S 144° 47'.4 E) and Port of Melbourne (38° 00'.5 S 144° 52'.9 E) and South East (38° 14'.8 S 144° 57'.5 E) Spoil Grounds.

Mariners are advised to navigate with caution in the area.

Chart temporarily affected - Aus 143 - Aus 144 - Aus 155 - Aus 158

262(T)/2020 AUSTRALIA - VICTORIA - Port Phillip - Port Melbourne Channel to Yarra River - Dredging operations; survey operations completed

Former Notice - 1345(T)/2019 is cancelled

Victorian Ports Corporation (Melbourne) Notice 102(T)/2020

Cancel this notice on receipt.

Chart formerly affected - Aus 154 - Aus 155

263(T)/2020 AUSTRALIA - VICTORIA - Port Phillip - South Channel - Shoaling

Victorian Ports Corporation (Melbourne) Notice 86(T)/2020

Shoaling with a least depth of *14.8m* exists in the vicinity of position 38° 17'.73 S 144° 41'.55 E.

Mariners are advised to navigate with caution in the area.

Chart temporarily affected - Aus 143 - Aus 144 - Aus 158

264(T)/2020 AUSTRALIA - VICTORIA - Port Phillip - Sorrento Channel - Light beacon destroyed

Parks Victoria Notice 100(T)/2020, 103(T)/2020

The starboard lateral light beacon, *Fl.G.5s No1* (38° 19'.48 S 144° 44'.53 E), has been destroyed; a starboard lateral light buoy, *Fl.G.5s*, exists in situ.

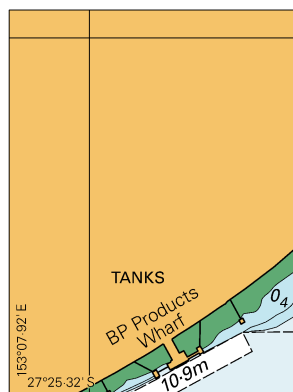
Chart temporarily affected - Aus 143 - Aus 158

II

HYDROGRAPHIC REPORTS

NIL

To accompany Australian Notice to Mariners 226/2020

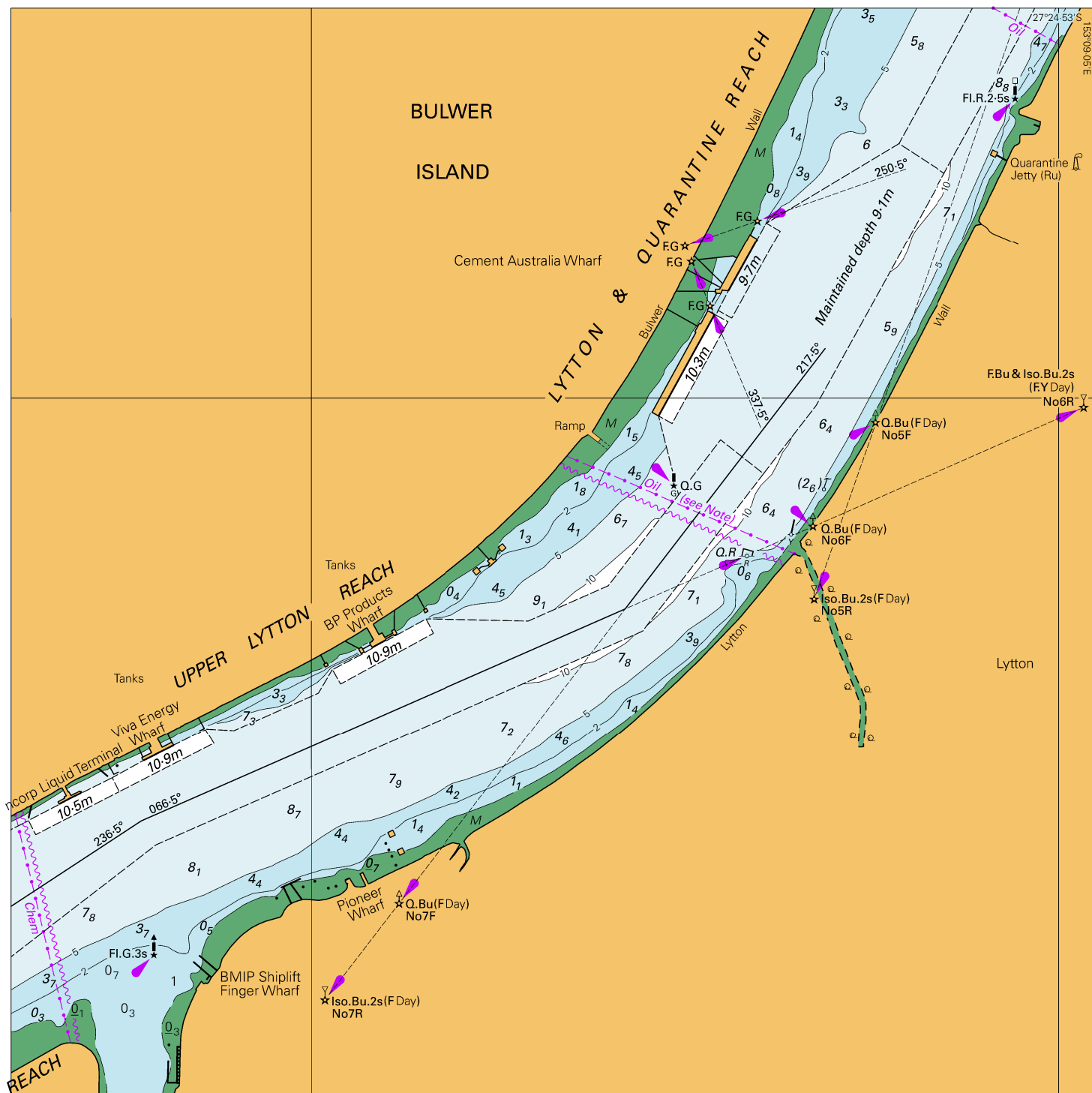


© Commonwealth of Australia 2020

Block for chart Aus 237

(38.5 x 50.8mm)

To accompany Australian Notice to Mariners 226/2020

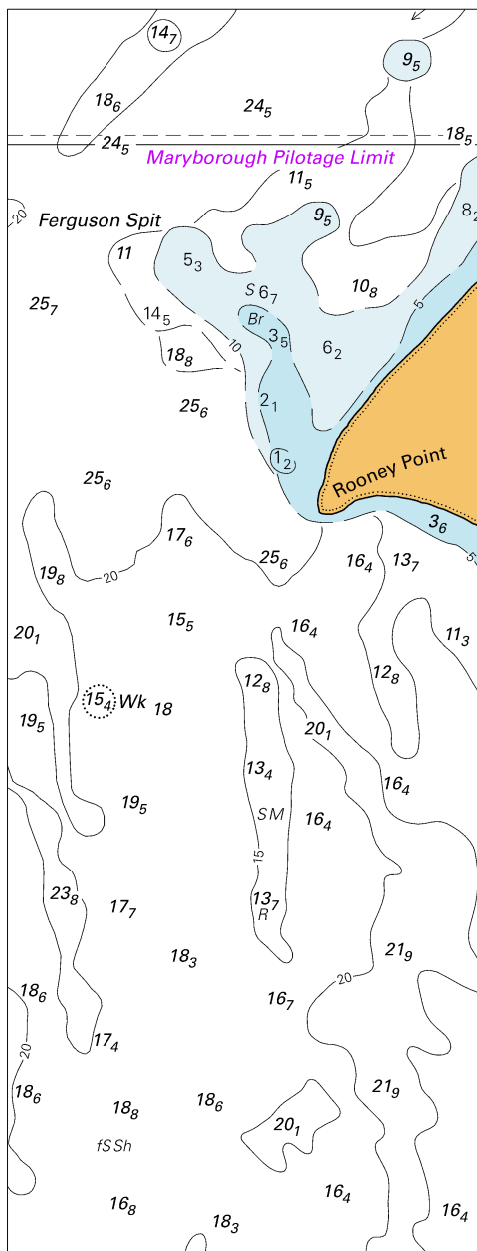


Block for chart Aus 238

© Commonwealth of Australia 2020

(191.4 x 191.6mm)

To accompany Australian Notice to Mariners 229/2020

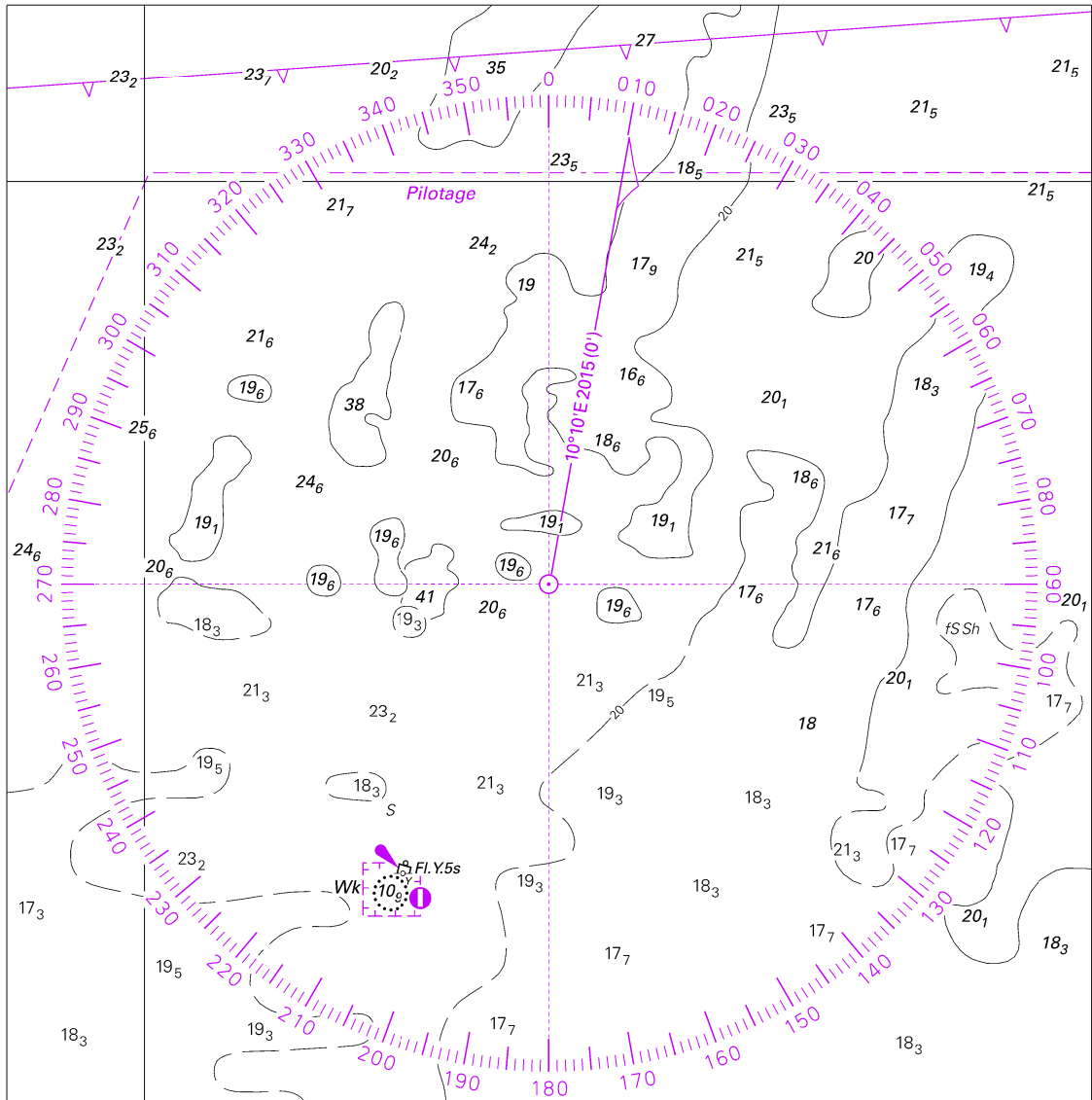


© Commonwealth of Australia 2020

Block for chart Aus 816

(62.6 x 164.7mm)

To accompany Australian Notice to Mariners 229/2020

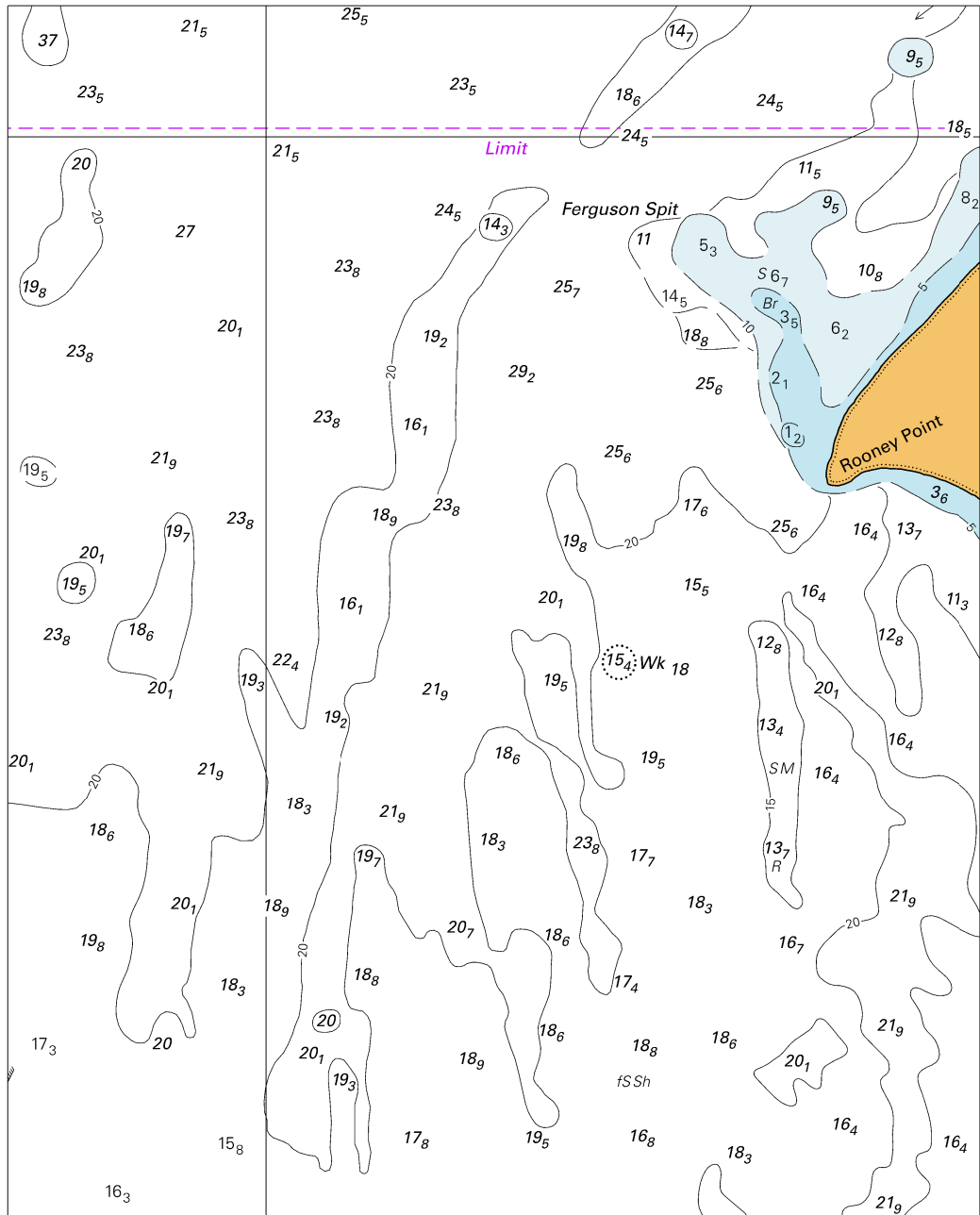


Block A for chart Aus 817

© Commonwealth of Australia 2020

(147.5 x 149.1mm)

To accompany Australian Notice to Mariners 229/2020

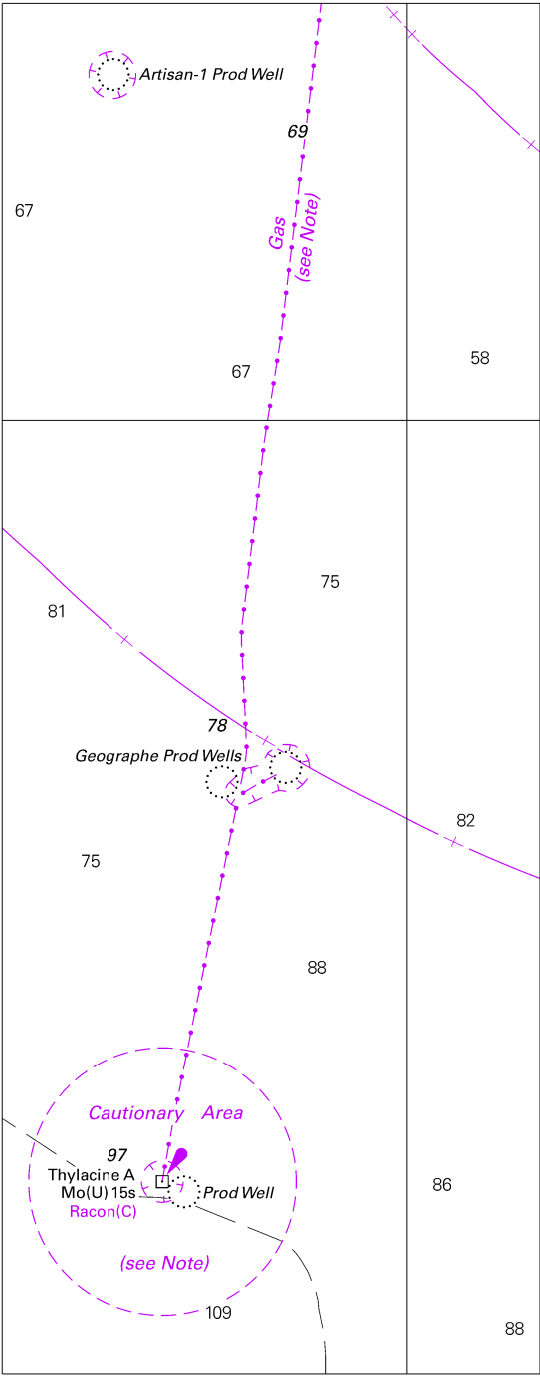


Block B for chart Aus 817

© Commonwealth of Australia 2020

(136.3 x 169.8mm)

To accompany Australian Notice to Mariners 244/2020



© Commonwealth of Australia 2020

Block for chart Aus 349

(71.1 x 181.3mm)