



7 February 2020

Edition 3

# AUSTRALIAN NOTICES TO MARINERS

## Notices 83 - 127

Published fortnightly by the Australian Hydrographic Office



Australian Notices to Mariners are the authority for correcting charts and publications published by the Australian Hydrographic Office covering Australia, Papua New Guinea, Solomon Islands, Australian Antarctic Territory and Timor-Leste.

Commodore F.T. FREEMAN RAN  
*Hydrographer of Australia*

---

### SECTIONS.

- I. **Australian Notices to Mariners, including blocks and notes.**
- II. **Hydrographic Reports.**

### SUPPLEMENTS.

- I. **Tracings**
  - II. **Cumulative List of Australian Notices to Mariners.**
  - III. **Cumulative List of Temporary and Preliminary Australian Notices to Mariners.**
  - IV. **Temporary and Preliminary Notices in force.**
- 
- 

© Commonwealth of Australia 2020

This work is copyright. Apart from any use permitted under the Copyright Act 1968, no part may be reproduced by any process, adapted, communicated or commercially exploited without prior written permission from The Commonwealth represented by the Australian Hydrographic Office.

## IMPORTANT NOTICE

This edition of Notices to Mariners includes all significant information affecting AHO products which the AHO has become aware of since the last edition. All reasonable efforts have been made to ensure the accuracy and completeness of the information, including third party information, on which these updates are based. The AHO regards third parties from which it receives information as reliable, however the AHO cannot verify all such information and errors may therefore exist. The AHO does not accept liability for errors in third party information.

---

## GENERAL INSTRUCTIONS

The substance of these notices should be inserted on the charts affected.

Bearings are referred to the true compass and are reckoned clockwise from North; those relating to lights are given as seen by an observer from seaward.

Positions quoted in notices relate to WGS84 which is the horizontal datum for all charts produced by the Australian Hydrographic Office.

The range quoted for a light is its nominal range.

Depths are with reference to the chart datum of each chart. Heights are above mean high water springs or mean higher high water, as appropriate.

The capital letter (P) or (T) after the number of any notice denotes a preliminary or temporary notice respectively, which are contained separately at the end of the permanent notices.

---

## REPORTING OF DANGERS

Mariners are particularly requested to notify the AUSTRALIAN HYDROGRAPHIC OFFICE, Locked Bag 8801 Wollongong, NSW 2500 (Fax 02-4223 6599, e-mail [datacentre@hydro.gov.au](mailto:datacentre@hydro.gov.au) or, alternatively by filling in and submitting the [Hydrographic Notes](#) forms located on the web site – [www.hydro.gov.au](http://www.hydro.gov.au)), immediately on the discovery of new dangers or suspected dangers to navigation. For changes or defects in aids to navigation notify AusSAR (Fax 02-6230 6868 or email [rccaus@amsa.gov.au](mailto:rccaus@amsa.gov.au)).

---

## AUTHORISED USE

Copies of Australian notices are available free of charge from the Australian Hydrographic Office (AHO) website ([www.hydro.gov.au](http://www.hydro.gov.au)) and through the eNotices (email) service ([www.hydro.gov.au/enotices/enotices.htm](http://www.hydro.gov.au/enotices/enotices.htm)).

Individual Notices may be copied for the purpose of inserting Notice substance on official charts and publications. Paper copies may be printed by chart agents and distributed to customers on a cost recovery basis. Participating chart agents are listed on the AHO website as providing a 'Paper Notices to Mariners' service ([www.hydro.gov.au/webapps/jsp/agents/agents-list.jsp](http://www.hydro.gov.au/webapps/jsp/agents/agents-list.jsp)). Copies of the notices may not be sold for profit without prior written agreement.

## NUMERICAL INDEX OF NOTICES TO MARINERS

### Edition No 3

Notices	Aus Chart, INT Chart, ENC Cell, AHP, BA Pubs
83	Aus 115, 505, 545, 637, 668, 670, 5000, 5001, PNG 505, 545, 637, 668, 670
84	Aus 280, 281, 511, 539, SLB 101, 102, 106, 201, 301, 302, 303, 304
85	Paper Chart Rationalisation
86	Amendment to Australian National Tide Tables 2020
87	Erratum
88	Revised prices
89	Aus 202
90	Aus 238
91	Aus 244, 245, 271
92	Aus 230
93	Aus 396
94	Aus 393, 539, 546, 554, 4622, INT 622
95	Aus 397, 398, 554
96	Aus 379, 4620, INT 620
97	Aus 516
98	Aus 24
99	Aus 4070, INT 70
100	Aus 150
101	SLB 102
102(T)	Aus 208
103(T)	Aus 238
104(T)	Aus 237
105(T)	Aus 827
106(T)	Aus 244, 245, 271
107(T)	Aus 253, 254
108(T)	Aus 391, 4603, 4604, 4622, INT 603, 604, 622
109(T)	Aus 24, 25, 26
110(T)	Aus 110, 118, 336, 337
111(T)	Aus 57, 742
112(T)	Aus 53
113(T)	Aus 357, 487, 4644, INT 644
114(T)	Aus 357
115(T)	Aus 357
116(T)	Aus 182
117(T)	Aus 349, 787
118(T)	Aus 349, 357, 487, 787
119(T)	Aus 153
120(T)	Aus 143, 155
121(T)	Aus 158
122(T)	Aus 181, 182
123(T)	Aus 140
124(T)	Aus 140
125(T)	Aus 140
126(T)	Aus 181, 357, 802
127(T)	Aus 140, 143, 152

## NUMERICAL INDEX OF CHARTS AFFECTED

### Edition No 3

Aus Chart	Notices
Aus 24	98, 109(T)
Aus 25	109(T)
Aus 26	109(T)
Aus 53	112(T)
Aus 57	111(T)
Aus 110	110(T)
Aus 115	83
Aus 118	110(T)
Aus 140	123(T), 124(T), 125(T), 127(T)
Aus 143	120(T), 127(T)
Aus 150	100
Aus 152	127(T)
Aus 153	119(T)
Aus 155	120(T)
Aus 158	121(T)
Aus 181	122(T), 126(T)
Aus 182	116(T), 122(T)
Aus 202	89
Aus 208	102(T)
Aus 230	92
Aus 237	104(T)
Aus 238	90, 103(T)
Aus 244	91, 106(T)
Aus 245	91, 106(T)
Aus 253	107(T)
Aus 254	107(T)
Aus 271	91, 106(T)
Aus 280	84
Aus 281	84
Aus 336	110(T)
Aus 337	110(T)
Aus 349	117(T), 118(T)
Aus 357	113(T), 114(T), 115(T), 118(T), 126(T)
Aus 379	96
Aus 391	108(T)
Aus 393	94
Aus 396	93
Aus 397	95
Aus 398	95
Aus 487	113(T), 118(T)
Aus 505	83
Aus 511	84
Aus 516	97
Aus 539	84, 94
Aus 545	83
Aus 546	94
Aus 554	94, 95
Aus 637	83
Aus 668	83
Aus 670	83
Aus 742	111(T)
Aus 787	117(T), 118(T)
Aus 802	126(T)
Aus 827	105(T)

Aus Chart	Notices
Aus 4070	99
Aus 4603	108(T)
Aus 4604	108(T)
Aus 4620	96
Aus 4622	94, 108(T)
Aus 4644	113(T)
Aus 5000	83
Aus 5001	83
PNG 505	83
PNG 545	83
PNG 637	83
PNG 668	83
PNG 670	83
SLB 101	84
SLB 102	84, 101
SLB 106	84
SLB 201	84
SLB 301	84
SLB 302	84
SLB 303	84
SLB 304	84

INT Chart	Notices
INT 70	99
INT 603	108(T)
INT 604	108(T)
INT 620	96
INT 622	94, 108(T)
INT 644	113(T)

**83 AUSTRALIA - Products - New Charts, New Editions, Withdrawn Charts**

Australian Hydrographic Office

**New Charts**

<i>Chart</i>	<i>Title and Geographical limits</i>	<i>Scale</i>	<i>Publication Date</i>	<i>Remarks</i>
PNG 505	Papua New Guinea - South Coast - Port Moresby to Hood Point 9° 25'·15 S – 10° 17'·95 S 146° 30'·00 E – 147° 54'·45 E	1:150 000	7 February 2020	Adoption of Papua New Guinea chart numbering. Replaces Aus 505. General updating throughout.
PNG 545	Papua New Guinea - New Britain - New Ireland - Rabaul to Cape Lambert 3° 28'·60 S – 4° 22'·20 S 151° 00'·50 E – 152° 24'·90 E	1:150 000	7 February 2020	Adoption of Papua New Guinea chart numbering. Replaces Aus 545. General updating throughout; including latest bathymetric data.
PNG 637	Papua New Guinea - North East Coast - Trobriand Islands 8° 18'·40 S – 8° 39'·20 S 150° 57'·15 E – 151° 14'·80 E Plans: Kitava Island 8° 33'·81 S – 8° 38'·82 S 151° 14'·00 E – 151° 20'·40 E Losuia 8° 32'·40 S – 8° 34'·40 S 151° 01'·38 E – 151° 04'·00 E	1:50 000    1:37 500   1:15 000	7 February 2020	Adoption of Papua New Guinea chart numbering. Replaces Aus 637. General updating throughout.
PNG 668	Papua New Guinea - New Ireland - North Coast - Plans in Papua New Guinea (Sheet 9) Plans: Sperber Point to Cape St George 4° 39'·50 S – 4° 52'·98 S 152° 43'·00 E – 153° 00'·68 E Nabuto Bay 3° 34'·26 S – 3° 41'·00 S 152° 23'·30 E – 152° 32'·13 E	1:50 000    1:25 000	7 February 2020	Adoption of Papua New Guinea chart numbering. Replaces Aus 668. General updating throughout.
PNG 670	Papua New Guinea - New Britain - South Coast - Gasmata to Fulleborn including Linden Harbour 6° 06'·00 S – 6° 23'·72 S 150° 12'·72 E – 150° 43'·00 E	1:50 000	7 February 2020	Adoption of Papua New Guinea chart numbering. Replaces Aus 670. General updating throughout; including latest bathymetric data.

**New Electronic Navigation Chart (Aus ENC)**

<i>Cell Name</i>	<i>Title</i>	<i>Publication Date</i>	<i>Remarks</i>
NIL			

**New Editions and Withdrawn Charts**

<i>Chart</i>	<i>Title</i>	<i>Scale</i>	<i>Publication Date</i>	<i>Remarks</i>
Aus 115 <b>(Edition 6)</b>	Australia - West Coast - Western Australia - Approaches to Bunbury Plan: Port of Bunbury	1:50 000  1:10 000	7 February 2020	New edition with general updating throughout; including latest bathymetric data. <b>Chart Aus 115 Edition 5 dated 25 March 2016 is now superseded and must be withdrawn from use.</b>
Aus 5000	Australian Hydrographic Office Index of Nautical Charts - Northern Portion 2020		7 February 2020	<b>Aus 5000 2019 is now superseded and must be withdrawn from use.</b>
Aus 5001	Australian Hydrographic Office Index of Nautical Charts - Southern Portion 2020		7 February 2020	<b>Aus 5001 2019 is now superseded and must be withdrawn from use.</b>

**Charts withdrawn**

<i>Chart</i>	<i>Remarks</i>
Aus 505	On publication of new chart PNG 505
Aus 545	On publication of new chart PNG 545
Aus 637	On publication of new chart PNG 637
Aus 668	On publication of new chart PNG 668
Aus 670	On publication of new chart PNG 670

**Chart permanently withdrawn**

Charts listed above as withdrawn no longer meet chart carriage requirements and should be marked as "superseded" and replaced with the new chart/ new edition listed prior to passage through the area covered by the new chart.

When placing orders with a chart agent between notice of forthcoming edition and its publication, mariners should advise whether their order pertains to the current edition or the new edition.

For further details refer to the AHO website at [www.hydro.gov.au](http://www.hydro.gov.au) for new edition and new chart stock arrival information.

**84 AUSTRALIA - Products - New Charts and New Editions to be published shortly**

Australian Hydrographic Office

**New Charts to be published shortly**

<i>Chart</i>	<i>Title</i>	<i>Scale</i>	<i>Expected Publication Date</i>	<i>Remarks</i>
PNG 511	Papua New Guinea - North East Coast - Sudest Island to Rossel Island	1:150 000	21 February 2020	Adoption of Papua New Guinea chart numbering. Replaces Aus 511. General updating throughout.
PNG 539	Papua New Guinea - New Ireland - Nabuto Bay to Cape Lemeris including Lihir Island Plan: Luise Harbour	1:150 000  1:12 500	21 February 2020	Adoption of Papua New Guinea chart numbering. Replaces Aus 539. General updating throughout; including latest bathymetric data.

**New Editions to be published shortly**

<i>Chart</i>	<i>Title</i>	<i>Scale</i>	<i>Expected Publication Date</i>	<i>Remarks</i>
SLB 101	South Pacific Ocean - Solomon Islands Anchorages in Guadalcanal Island Plans: Honiara Lungga Roads Marau Sound	1:5 000 1:20 000 1:50 000	21 February 2020	New Edition to incorporate submarine cables.
SLB 102	Plans in the New Georgia Group Plans: Gizo Harbour and Approaches Ringgi Cove Blackett Strait Lever Harbour Port Noro	1:25 000 1:15 000 1:50 000 1:7 500 1:20 000	21 February 2020	New Edition to incorporate submarine cables.
SLB 106	South Pacific Ocean - Solomon Islands - Bougainville Strait	1:75 000	21 February 2020	New Edition to incorporate submarine cables.
SLB 201	South Pacific Ocean - Solomon Islands - Sealark Channel and approaches to Honiara	1:100 000	21 February 2020	New Edition to incorporate submarine cables.
SLB 301	South Pacific Ocean - Solomon Islands - Bougainville Island to Ghizo Island	1:300 000	21 February 2020	New Edition to incorporate submarine cables.
SLB 302	South Pacific Ocean - Solomon Islands - Choiseul Island to New Georgia Island	1:300 000	21 February 2020	New Edition to incorporate submarine cables.
SLB 303	South Pacific Ocean - Solomon Islands - Santa Isabel Island to Guadalcanal Island	1:300 000	21 February 2020	New Edition to incorporate submarine cables.
SLB 304	South Pacific Ocean - Solomon Islands - Indispensable Strait	1:300 000	21 February 2020	New Edition to incorporate submarine cables.

**Charts to be withdrawn**

<i>Chart</i>	<i>Remarks</i>
Aus 511	On publication of new chart PNG 511
Aus 539	On publication of new chart PNG 539

**Charts to be withdrawn without replacement 20 March 2020**

<i>Chart</i>	<i>Title</i>	<i>Scale</i>	<i>Publication Date</i>
Aus 280 <b>Edition 5</b>	Australia - East Coast - Queensland - Plans in Queensland (Sheet 3) Plans: Magpie Reef to Eden Reef Flinders Group	1:75 000 1:50 000	22 February 2019
Aus 281 <b>Edition 3</b>	Australia - East Coast - Queensland - First Three Mile Opening to Cape Direction	1:75 000	22 February 2019

## 85 AUSTRALIA - Product - Paper Chart Rationalisation

Australian Hydrographic Office

The Australian Hydrographic Office has noted a significant shift in demand from paper nautical charts to Electronic Navigation Charts (ENC), with ENC now being over 80 percent of total user demand. The AHO will therefore be rationalising the Australian paper chart portfolio to permit a greater focus on new editions of ENC.

Following consultation with AMSA, shipping industry and recreational yachting representatives, paper nautical charts will be rationalised based upon the following principles from within the existing portfolio:

- \* Coastal areas – either 1:150,000 or 1:300,000, but not both
- \* Ports and approaches – coverage at a single scale for each area, generally in the range 1:25,000 to 1:50,000. Remaining charts will be sufficient for use as a back-up to ECDIS by permitting larger vessels to plan pilotage, and reach a pilot boarding ground, anchorage or place of refuge without assistance, noting that in most ports they are required to embark a marine pilot. Remaining paper charts will carry a note in areas where larger scale ENC coverage is available.

The following Australian paper nautical charts will be progressively withdrawn throughout 2020 once any necessary detail has been transferred to remaining charts. Additional charts will be added through the Notice to Mariners editions

Equivalent or better ENC coverage will remain in place

### New South Wales

<i>Chart</i>	<i>Title</i>
Aus 191	Plans in New South Wales (Sheet 3) Plans: Batemans Bay Batemans Bay Marina Bermagui Crookhaven River Entrance Kiama Moruya River Entrance Narooma Ulladulla
Aus 192	Twofold Bay Plans: East Boyd Bay Wharves Eden
Aus 193	Approaches to Jervis Bay Plans: HMAS Creswell Huskisson
Aus 194	Port Kembla including Wollongong Harbour Plan: Wollongong Harbour
Aus 196	Port Botany
Aus 197	Approaches to Port Jackson - Port Hacking to The Skillion
Aus 201	Port Jackson (Eastern Sheet)
Aus 202	Port Jackson (Central Sheet) - Sydney Harbour
Aus 203	Port Jackson (Western Sheet) - Parramatta and Lane Cove Rivers Inset: Parramatta River
Aus 208	Newcastle Inset: Hunter River (South Arm)
Aus 215	Pittwater
Aus 216	Lion Island to Brisbane Water
Aus 217	Hawkesbury River including Cowan Creek Plan: Cowan Creek
Aus 219	Plans in New South Wales (Sheet 2) Plans: Broughton Island Camden Haven Cape Hawke Harbour Hastings River Port Macquarie Sugarloaf Anchorage



**New South Wales** (*continued*)

<i>Chart</i>	<i>Title</i>
Aus 220	Plans in New South Wales (Sheet 1) Plans: Brunswick River Entrance Coffs Harbour Evans Head Richmond River Entrance Tweed River Entrance Trial Bay Wooli Wooli River Entrance
Aus 221	Solitary Islands
Aus 222	Clarence River Plan: Goodwood Island Wharf

**Queensland**

<i>Chart</i>	<i>Title</i>
Aus 4 Plan	Weipa
Aus 6 Plan	Karumba
Aus 230	Approaches to Gold Coast Seaway
Aus 235 Plan	Mooloolaba Harbour
Aus 238	Brisbane River - Lytton Reach to Victoria Bridge
Aus 240	Great Sandy Strait (Southern Sheet)
Aus 241	Great Sandy Strait (Northern Sheet)
Aus 242 Plan	Burnett River (Northern Section)
Aus 242 Plan	Burnett River (Southern Section)
Aus 244	South Trees Point to Auckland Point
Aus 247	Keppel Bay
Aus 247 Plan	Roslyn Bay
Aus 255 Plan	Abbot Point Wharf
Aus 256 Plan	Cape Ferguson
Aus 256 Plan	Nelly Bay
Aus 257	Townsville Harbour and Ross River Entrance
Aus 261	Plans in Shoalwater Bay
Aus 267 Plan	Lucinda Offshore Wharf
Aus 269	Plans of Airlie Beach and Shute Harbour Plans: Airlie Beach Shute Harbour
Aus 270 Plan	Approaches to Heath Reef
Aus 270 Plan	Cape Flattery Wharf
Aus 270 Plan	Cape Melville and Pison Islets
Aus 270 Plan	Howick Group
Aus 280	Plans in Queensland (Sheet 3) Plans: Flinders Group Magpie Reef to Eden Reef
Aus 281	First Three Mile Opening to Cape Direction
Aus 286	Ashmore Reef
Aus 297	Great North East Channel - Basilisk Passage to Moon Passage

**Northern Territory**

<i>Chart</i>	<i>Title</i>
Aus 13 Plan	Bickerton Island
Aus 13 Plan	Port Langdon
Aus 15 Plan	Cadell Strait
Aus 15 Plan	Cumberland Strait
Aus 15 Plan	Gove Inner Harbour
Aus 15 Plan	Gugari Rip
Aus 15 Plan	Jensen Bay
Aus 24	Port Darwin - Wickham Point
Aus 27	Port Darwin - Middle Arm including Channel Island

**Northern Territory** (*continued*)

<i>Chart</i>	<i>Title</i>
Aus 28	Port Darwin - East Arm
Aus 29	Approaches to Bynoe Harbour and Port Patterson
Aus 724	Fog Bay to Port Keats
Aus 725	Port Keats to Victoria River

**Western Australia**

<i>Chart</i>	<i>Title</i>
Aus 32 Plan	Approaches to Wyndham Wharf
Aus 32 Plan	Wyndham Wharf
Aus 43	Scott and Seringapatam Reefs
Aus 44	Ashmore Reef
Aus 48	Mermaid Reef
	Plan:
	Lagoon Entrance
Aus 49	Plans in Western Australia (Sheet 2)
	Plans:
	Beagle Bay
	Lagrange Bay
Aus 51	Broome
Aus 54	Port Hedland
Aus 72 Plan	Exmouth Boat Harbour
Aus 72 Plan	Point Murat Wharf
Aus 81 Plan	Geraldton
Aus 105	Wedge Island to Lancelin
Aus 109	Port of Albany
Aus 110	King George Sound
	Plan:
	Oyster Harbour
Aus 113	Fremantle
Aus 115 Plan	Port of Bunbury
Aus 726	Approaches to Cambridge Gulf

**South Australia**

<i>Chart</i>	<i>Title</i>
Aus 121	Plans in South Australia (Sheet 6)
	Plans:
	Blanche Port
	Coffin Bay
	Port Eyre
	Streaky Bay
	Venus Bay
	Waterloo Bay
Aus 122	Yatala Channel
	Plan:
	Thevenard Wharf
Aus 125	Plans in South Australia (Sheet 1)
	Plans:
	Cape Jervis
	Glenelg
	Oyster Bay
	Penneshaw
	Port Stanvac
	Port Vincent
	Wirrina Cove
Aus 126	Plans in South Australia (Sheet 5)
	Plans:
	Althorpe Islands
	Backstairs Passage

**South Australia** (*continued*)

<i>Chart</i>	<i>Title</i>
Aus 127	Plans in South Australia - South East Coast Plans: Beachport Cape Jaffa Marina King Head to Port Elliot Kingston SE Port Caroline to Robe Port Elliot Rivoli Bay Robe Southend Victor Harbor
Aus 129	Approaches to Nepean Bay Plan: Kingscote
Aus 130	Approaches to Port Adelaide
Aus 132	Approaches to Port Augusta Plans: Port Augusta Wharves Snapper Reach to Port Augusta
Aus 133	Plans in South Australia (Sheet 3) Plans: Port Lincoln Wallaroo
Aus 135	Plans in South Australia (Sheet 4) Plans: Port Bonython Whyalla
Aus 137	Port Adelaide
Aus 138	Port Adelaide - Entrance Channel
Aus 139	Plans in South Australia (Sheet 2) Plans: Ardrossan Harbor Approaches Ardrossan Harbor Klein Point Macdonnell Sound Port Giles

**Victoria**

<i>Chart</i>	<i>Title</i>
Aus 141	Plans in South West Victoria Plans: Apollo Bay Apollo Bay Boat Harbour Loutit Bay Port Campbell Port Fairy Port Fairy to Warnambool Warnambool
Aus 148	Plans in Bass Strait Plans: Hogan Group Kent Group Refuge Cove and Sealers Cove
Aus 151	Western Port (Entrance and North Arm)
Aus 152	Plans in Western Port Plans: Crib Point Hanns Inlet Hastings Bight Rutherford Inlet
Aus 153	Port of Geelong

## 85 AUSTRALIA - Product - Paper Chart Rationalisation

**Victoria** *(continued)*

<i>Chart</i>	<i>Title</i>
Aus 154	Melbourne - Williamstown and Yarra River Inset: Yarra River
Aus 155	Approaches to Port of Melbourne Plans: Altona Brighton Sandringham St Kilda
Aus 157	Port of Geelong and Approaches Plans: Clifton Springs Point Henry Pier
Aus 158	Port Phillip - South and West Channels
Aus 182	Plans in Victoria - South East Coast Plans: Approaches to Port Albert Barry Beach Marine Terminal Lakes Entrance Lewis Channel Port Albert Port Welshpool
Aus 787	Childers Cove to Cape Otway
Aus 788	Cape Otway to Cape Schanck
Aus 789	Bass Strait - King Island

**Tasmania**

<i>Chart</i>	<i>Title</i>
Aus 168	River Tamar - Long Reach to Launceston Plans: Launceston Wharves
Aus 169	Tamar Island to Launceston Plans in Tasmania (Sheet 3) Plans: Blackman Bay Coles Bay Georges Bay Schouten Passage
Aus 170	Mercury Passage
Aus 172	Port of Hobart Plans: Bowen Bridge Sullivans Cove
Aus 174	Plans in Tasmania (Sheet 4) Plans: North West Bay Port Arthur Port Huon Recherche Bay Southport
Aus 175	Spring Bay including Triabunna
Aus 176	Port Davey including Bathurst Channel Plans: Bathurst Narrows Entrance to Bathurst Channel
Aus 177	Approaches to Macquarie Harbour Plans: Hells Gates Strahan

**85 AUSTRALIA - Product - Paper Chart Rationalisation**

**Tasmania (continued)**

<i>Chart</i>	<i>Title</i>
Aus 178	Plans in Tasmania (Sheet 2) Plans: Approaches to Grassy Harbour Currie Harbour Grassy Harbour Port Latta Smithton Stanley Harbour Wynyard
Aus 179	Plans in Tasmania (Sheet 1) Plans: Approaches to Lady Barron Foster Inlet Franklin Sound Waterhouse Passage Whitemark

**86 AUSTRALIA - Product - Amendment to Australian National Tide Tables 2020**  
Australian Hydrographic Office

**ANTT 2020**

Page 369

<i>Delete</i>	PORT MORESBY To Chart Datum AUS 622 NE 30 NOV 2018 SUBTRACT 0.1
<i>Insert</i>	PORT MORESBY To Chart Datum PNG 622 NC 10 JAN 2020 SUBTRACT 0.1

Page 367

<i>Amend</i>	LOW HEAD To Chart Datum AUS 167 NE 24 JAN 2020 0.0
--------------	--

Page 371

<i>Amend</i>	WALLAROO To Chart Datum AUS 777 NE 24 JAN 2020 0.0
--------------	--

**87 AUSTRALIA - Product - Erratum**  
Australian Hydrographic Office

*Notice to Mariners 3/2020*

**ANTT 2020**

The following updates were incorrectly deleted and should have read amend:

Page 362	BARROW ISLAND - TANKER MOORING To Chart Datum AUS 65 NE 13 DEC 2019 0.0
	BARROW ISLAND - WAPET LANDING To Chart Datum AUS 65 NE 13 DEC 2019 0.0

**88 AUSTRALIA - Product - Revised prices**

Australian Hydrographic Office

<i>Australian Hydrographic Office Products</i>	<i>RRP (including GST)</i>
Paper Nautical Charts	\$40.00
- Instructional Purposes	\$28.00
Paper Chart Indexes	\$17.50
Australian National Tide Tables - 2020 Edition, hard copy	\$55.00
- Instructional Purposes	\$38.50
Mariner's Handbook for Australian Waters - Fifth Edition, hard copy	\$55.00
- Instructional Purposes	\$38.50
AusTides - 2020 Edition	\$20.00
- Instructional Purposes	\$14.00
Paper Mercatorial Plotting Sheets	\$17.50

*Note: Instructional Purposes Recommended Retail Prices are available to students enrolled in courses offered by maritime training institutions. Students must provide proof of the training institute and proof of the course at the time of purchase. Instructional prices also apply to sales to Australian volunteer marine rescue organisations.*

<i>AusENC Service</i>	<i>Subscription Duration</i>	<i>Pack RRP (including GST)</i>
Australia Pack	12 months	\$793.50
	9 months	\$634.80
	6 months	\$476.10
	3 months	\$317.40
Voyager Pack	12 months	\$402.50
	9 months	\$322.00
	6 months	\$241.50
	3 months	\$161.00
Coastal Pack	12 months	\$80.50
Port Pack	12 months	\$23.00
Standard Update Service - Web Based (All Packs)	12 months	\$0.00
	9 months	\$0.00
	6 months	\$0.00
	3 months	\$0.00
Premium Update Service - CD Based (All Packs)	12 months	\$115.00
	9 months	\$90.00
	6 months	\$65.00
	3 months	\$30.00

*Note: AusENC is a local ENC Service and is only sold by AusENC Distribution Agents located in Australia.*

**89 AUSTRALIA - NEW SOUTH WALES - Port Jackson - Sydney Harbour - Chart note**

Port Authority of New South Wales

*Note: position of existing chart notes may vary on certain charts.*

**Aus 202 [7/2020]**

Replace Sydney Vessel Traffic Service Area note with accompanying note 33° 52'.40 S 151° 10'.17 E

**90 AUSTRALIA - QUEENSLAND - Brisbane River - Hamilton Reach - Light beacons withdrawn**

Maritime Safety Queensland Notice 23/2020

**Aus 238 [929/2019]**

Delete light beacon 27° 26'.41 S 153° 03'.75 E  
 Delete light beacon 27° 26'.42 S 153° 03'.85 E

**Aus 238 (Hamilton Reach) [929/2019]**

Delete light beacon 27° 26'.41 S 153° 03'.75 E  
 Delete light beacon 27° 26'.42 S 153° 03'.85 E

**91 AUSTRALIA - QUEENSLAND - Gladstone - Clinton Channel - Light beacons withdrawn**

Maritime Safety Queensland Notices 17, 20(T), 25(T)/2020

**Aus 244 [467/2019]**

Delete	light beacon	23° 49'.01 S	151° 14'.65 E
	light beacon	23° 49'.18 S	151° 14'.82 E

**Aus 245 [467/2019]**

Delete	light beacon	23° 49'.01 S	151° 14'.65 E
	light beacon	23° 49'.18 S	151° 14'.82 E

**Aus 271 [275/2018]**

Delete	light beacon	23° 49'.01 S	151° 14'.65 E
	light beacon	23° 49'.18 S	151° 14'.82 E

**92 AUSTRALIA - QUEENSLAND - Gold Coast Seaway - Wave Break Island - Light beacon**

Former Notices - 633(T)/2018, 1258(T)/2019 are cancelled

Maritime Safety Queensland Notice 18/2020

**Aus 230 [50/2020]**

Move	light beacon	27° 56'.48 S	153° 24'.92 E
	to	27° 56'.470 S	153° 24'.958 E

**93 PAPUA NEW GUINEA - New Britain - Linden Harbour - Chart name**

Australian Hydrographic Office

**Aus 396 [1001/2019]**

Amend	legend to PNG 670	5° 48'.2 S	150° 16'.2 E
	legend to PNG 670	6° 23'.5 S	150° 41'.8 E

**94 PAPUA NEW GUINEA - New Britain to New Ireland - Chart name**

Australian Hydrographic Office

**Aus 393 [1043/2019]**

Amend	legend to PNG 545	2° 17'.2 S	152° 00'.6 E
	legend to PNG 545	3° 29'.1 S	151° 01'.6 E
	legend to PNG 668	3° 34'.7 S	152° 31'.7 E

**Aus 539 [1043/2019]**

Amend	legend to PNG 668	3° 32'.2 S	152° 03'.5 E
	legend to PNG 668	3° 34'.4 S	152° 23'.8 E
	legend to Adjoining Chart PNG 545 in S border	3° 40'.0 S	152° 12'.9 E

**Aus 546 [1001/2019]**

Amend	legend to Adjoining Chart PNG 545 in N border	3° 58'.0 S	151° 22'.5 E
	legend to Adjoining Chart PNG 545 in E border	4° 02'.5 S	151° 42'.5 E

**Aus 554 [1001/2019]**

Amend	legend to Adjoining Chart PNG 545 in N border	3° 44'.8 S	152° 12'.5 E
	legend to Adjoining Chart PNG 545 in W border	4° 07'.5 S	152° 02'.6 E

**Aus 4622 (INT 622) [55/2020]**

Amend	legend to PNG 545	3° 31'.0 S	151° 05'.7 E
-------	-------------------	------------	--------------

**95 PAPUA NEW GUINEA - New Ireland - Chart name**

Australian Hydrographic Office

**Aus 397 [1001/2019]**

Amend	legend to PNG 668	4° 26'.5 S	154° 32'.9 E
	legend to PNG 668	4° 52'.8 S	152° 44'.1 E

**Aus 398 [288/2016]**

Amend	legend to PNG 668	3° 49'.5 S	155° 12'.8 E
	legend to PNG 668	4° 39'.9 S	152° 59'.6 E

**Aus 554 [94/2020]**

Amend	legend to PNG 668	4° 21'.8 S	152° 54'.1 E
	legend to PNG 668	4° 52'.8 S	152° 43'.5 E

**96 PAPUA NEW GUINEA - Port Moresby - Chart name**

Australian Hydrographic Office

**Aus 379 [1042/2019]**

Amend	legend to PNG 505	10° 17'.6 S	146° 31'.3 E
	legend to PNG 505	8° 33'.1 S	147° 15'.4 E

**Aus 4620 (INT 620) [55/2020]**

Amend	legend to PNG 505	10° 17'.6 S	146° 31'.3 E
-------	-------------------	-------------	--------------

**97 PAPUA NEW GUINEA - Trobriand Islands - Chart name**

Australian Hydrographic Office

**Aus 516 [55/2020]**

Amend	legend to PNG 637	8° 18'.5 S	151° 14'.4 E
	legend to PNG 637	8° 34'.1 S	151° 19'.8 E

**98 AUSTRALIA - NORTHERN TERRITORY - Darwin - Cullen Bay - Nav aids**

Department of Infrastructure, Planning and Logistics NT Notice 79/2019

**Aus 24 [15/2020]**

Insert	accompanying block	12° 27'.17 S	130° 49'.00 E
--------	--------------------	--------------	---------------

**99 INDIAN OCEAN - Madagascar - Depth**

UKHO BA Notice 4/540/2020

**Aus 4070 (INT 70) [430/2019]**

Delete	depth, 9m, and enclosing danger circle	25° 31'.0 S	46° 56'.0 E
--------	--	-------------	-------------

**100 AUSTRALIA - VICTORIA - Western Port - Coronet Bay to The Narrows - Nav aids**

Parks Victoria Notice 15/2020

**Aus 150 [25/2020]**

Replace	beacon with isolated danger cylindrical light buoy, <i>Fl(2)10s</i> , with topmark	38° 26'.4 S	145° 25'.3 E
---------	--	-------------	--------------

**Aus 150 (The Narrows) [25/2020]**

Replace	beacon with isolated danger light beacon, <i>Fl(2)10s</i> , with topmark	38° 30'.79 S	145° 21'.88 E
---------	--	--------------	---------------



**101 SOLOMON ISLANDS - Ghizo Island - Malakerava Point - Depths**  
HMAS *Benalla* and HMAS *Shepparton*

**SLB 102 (Gizo Harbour and Approaches) [30/2020]**

Insert	depth, 20 <sub>6</sub> m, and extend contour S to enclose	8° 07'.403 S	156° 50'.546 E
	depth, 27 <sub>4</sub> m, enclosed by contour	8° 07'.476 S	156° 50'.599 E
Delete	depth, 23 <sub>7</sub> m	8° 07'.37 S	156° 50'.57 E

**102(T)/2020 AUSTRALIA - NEW SOUTH WALES - Newcastle - Throsby Basin - Light unlit**  
Port Authority of New South Wales Notice 1(T)/2020

The light, *WRG.34m 15M* (32° 55'.40 S 151° 45'.68 E), is unlit.

**Chart temporarily affected - Aus 208**

**103(T)/2020 AUSTRALIA - QUEENSLAND - Brisbane River - Hamilton Reach - Harbour works**  
Maritime Safety Queensland Notice 24(T)/2020

Works are in progress at the Fitting-Out Wharf (27° 26'.80 S 153° 04'.64 E).

Mariners are advised to navigate with caution in the area.

**Chart temporarily affected - Aus 238**

**104(T)/2020 AUSTRALIA - QUEENSLAND - Brisbane River - Boggy Creek - Harbour works**  
Maritime Safety Queensland Notice 26(T)/2020

Works are in progress on the Overhead Oil Pipeline (38° 23'.28 S 153° 09'.00 E).

Mariners are requested to maintain a minimum clearance of 10m from the pipeline and advised to navigate with caution in the area.

**Chart temporarily affected - Aus 237**

**105(T)/2020 AUSTRALIA - QUEENSLAND - Cape Bowling Green - Obstruction; light buoy**  
Maritime Safety Queensland Notice 19(T)/2020

An obstruction marked by a special light buoy, *Fl.Y.2-5s*, exists in position 19° 18'.26 S 147° 22'.96 E.

**Chart temporarily affected - Aus 827**

**106(T)/2020 AUSTRALIA - QUEENSLAND - Gladstone - Clinton Channel - Light buoys**  
Maritime Safety Queensland Notices 17, 20(T), 25(T)/2020

A starboard lateral pillar light buoy, *Fl.G.4s*, exists in position 23° 49'.21 S 151° 14'.85 E.

A west cardinal pillar light buoy, *VQ(9)10s*, exists in position 23° 49'.01 S 151° 14'.66 E.

**Chart temporarily affected - Aus 244 - Aus 245 - Aus 271**

**107(T)/2020 AUSTRALIA - QUEENSLAND - Hamilton Island - Nav aids**  
Maritime Safety Queensland Notice 29(T)/2020

The Hamilton Island Marina leading lights *F.R* (20° 20'.78 S 148° 57'.10 E, 20° 20'.77 S 148° 57'.15 E) and leading line *081°* have been temporarily withdrawn.

**Chart temporarily affected - Aus 253 - Aus 254**

**108(T)/2020 PAPUA NEW GUINEA - Bismarck Sea - Alim Island - Light unlit**  
National Maritime Safety Authority PNG Coastal Navigation Warning 1/2020

The light, *Fl.5s 31m 10M* (2° 53'.31 S 147° 03'.68 E), is unlit.

**Chart temporarily affected - Aus 391 - Aus 4603 (INT 603) - Aus 4604 (INT 604) - Aus 4622 (INT 622)**

**109(T)/2020 AUSTRALIA - NORTHERN TERRITORY - Darwin - Elliott Point - Harbour works**

Department of Infrastructure, Planning and Logistics NT Notice 3(T)/2020

Vessel *Welchman* is conducting works associated with the reconstruction of the seawall (12° 27'.62 S 130° 49'.14 E).

A silt curtain will be established along the seawall and will remain in place until the completion of the works. Concrete mooring blocks marked by special light buoys will anchor the silt curtain.

A 100m restricted area exists from the seawall for vessels not involved in the works, unless specifically authorised.

The vessel will monitor VHF Ch 10 and Ch 16.

Mariners are advised to navigate with caution in the area.

**Chart temporarily affected - Aus 24 - Aus 25 - Aus 26**

**110(T)/2020 AUSTRALIA - WESTERN AUSTRALIA - Breaksea Island - Light altered**

Australian Maritime Safety Authority Auscoast Warning 26/2020, 31/2020

The light, *Fl(2)6s 119m 13M & Oc.R.1.5s 119m 15M* (35° 03'.86 S 118° 03'.46 E), has been temporarily altered to *Fl(2)6s 119m 15M*.

**Chart temporarily affected - Aus 110 - Aus 118 - Aus 336 - Aus 337**

**111(T)/2020 AUSTRALIA - WESTERN AUSTRALIA - Enderby Island - Drill rig northwestwards moved**

*Former Notice - 71(T)/2020* is cancelled

Australian Maritime Safety Authority

Cancel this notice on receipt.

**Chart formerly affected - Aus 57 - Aus 742**

**112(T)/2020 AUSTRALIA - WESTERN AUSTRALIA - Port Hedland - Coxon Shoal - Light beacon unlit eastwards**

Pilbara Ports Authority Notice PH 1(T)/2020

The east cardinal light beacon, *Q(3)10s 6M E3* (20° 03'.18 S 118° 32'.60 E), is unlit.

**Chart temporarily affected - Aus 53**

**113(T)/2020 AUSTRALIA - VICTORIA - Cape Conran - Drill rig southwards**

*Former Notice - 1075(T)/2019* is cancelled

MODU *Ocean Monarch*

Cancel this notice on receipt.

**Chart formerly affected - Aus 357 - Aus 487 - Aus 4644 (INT 644)**

**114(T)/2020 AUSTRALIA - VICTORIA - Golden Beach - Drill rig southeastwards**

*Former Notice - 1343(T)/2019* is cancelled

MODU *Noble Tom Prosser*, Australian Maritime Safety Authority Auscoast Warning 37/2020

Drill Rig *Noble Tom Prosser* is conducting drilling operations in position 38° 19'.08 S 147° 36'.98 E.

**Chart temporarily affected - Aus 357**

**115(T)/2020 AUSTRALIA - VICTORIA - Golden Beach - Scientific instrument southeastwards**

Metocean Services International

A special spherical light buoy, *Fl(5)Y.20s*, exists in position 38° 18'.87 S 147° 37'.58 E.

**Chart temporarily affected - Aus 357**

**116(T)/2020 AUSTRALIA - VICTORIA - Lakes Entrance - Shoaling removed**

*Former Notice* - 261(T)/2018 is cancelled  
Victorian Regional Channels Authority Notice 1(T)/2020

Cancel this notice on receipt.

**Chart formerly affected - Aus 182****117(T)/2020 AUSTRALIA - VICTORIA - Port Campbell - Survey operations completed**

*Former Notice* - 1124(T)/2019 is cancelled  
Fugro

Cancel this notice on receipt.

**Chart formerly affected - Aus 349 - Aus 787****118(T)/2020 AUSTRALIA - VICTORIA - Port Campbell to Cape Conran - Subsea operations**

Maritime Safety Victoria Notice 40(T)/2020, 41(T)/2020

Vessel *Harvest Shine* and a ROV are conducting subsea operations between the following positions:

38° 37'.38 S 142° 57'.87 E  
38° 40'.34 S 142° 57'.65 E  
38° 47'.82 S 142° 45'.33 E  
38° 47'.19 S 142° 41'.89 E  
38° 42'.75 S 142° 36'.92 E  
38° 38'.07 S 142° 41'.09 E;  
and  
37° 48'.14 S 148° 26'.17 E  
38° 01'.56 S 148° 27'.05 E;  
and  
37° 52'.12 S 148° 26'.36 E  
38° 06'.00 S 149° 00'.50 E;  
and  
38° 16'.70 S 148° 42'.94 E  
38° 17'.95 S 148° 42'.43 E  
38° 17'.56 S 148° 43'.79 E  
38° 19'.20 S 148° 43'.96 E.

Mariners are advised to navigate with caution in the area.

**Chart temporarily affected - Aus 349 - Aus 357 - Aus 487 - Aus 787****119(T)/2020 AUSTRALIA - VICTORIA - Port Phillip - Geelong - Cunningham Pier - Harbour works completed**

*Former Notice* - 364(T)/2019 is cancelled  
Victorian Regional Channels Authority Notice 1(T)/2020

Cancel this notice on receipt.

**Chart formerly affected - Aus 153****120(T)/2020 AUSTRALIA - VICTORIA - Port Phillip - Scientific instrument recovered**

*Former Notice* - 508(T)/2019 is cancelled  
Victorian Regional Channels Authority Notice 1(T)/2020

Cancel this notice on receipt.

**Chart formerly affected - Aus 143 - Aus 155****121(T)/2020 AUSTRALIA - VICTORIA - Port Phillip - Sorrento - Light buoy unlit**

Parks Victoria Notice 43(T)/2020

The special light buoy, *F(4)Y.10s* (38° 19'.88 S 144° 46'.12 E), is unlit.

**Chart temporarily affected - Aus 158**

**122(T)/2020 AUSTRALIA - VICTORIA - Port Welshpool - Harbour works completed**

*Former Notice* - 542(T)/2018 is cancelled  
Victorian Regional Channels Authority Notice 1(T)/2020

Cancel this notice on receipt.

**Chart formerly affected - Aus 181 - Aus 182**

**123(T)/2020 AUSTRALIA - VICTORIA - Portland - Obstruction removed**

*Former Notice* - 1104(T)/2018 is cancelled  
Port of Portland Notice 332(T)/2018

Cancel this notice on receipt.

**Chart formerly affected - Aus 140**

**124(T)/2020 AUSTRALIA - VICTORIA - Portland Harbour - Dredging operations completed**

*Former Notice* - 180(T)/2018 is cancelled  
Victorian Regional Channels Authority Notice 1(T)/2020

Cancel this notice on receipt.

**Chart formerly affected - Aus 140**

**125(T)/2020 AUSTRALIA - VICTORIA - Portland Harbour - Dredging operations completed**

*Former Notice* - 1234(T)/2019 is cancelled  
Victorian Regional Channels Authority Notice 1(T)/2020

Cancel this notice on receipt.

**Chart formerly affected - Aus 140**

**126(T)/2020 AUSTRALIA - VICTORIA - Seal Islands - Scientific instruments eastwards**

Star of the South Wind Farm

On or about 15th February, scientific instruments will be deployed 12-15m below the surface in the following positions:

38° 50'.83 S 146° 55'.99 E  
38° 52'.35 S 146° 55'.28 E  
38° 51'.11 S 146° 53'.94 E  
38° 51'.43 S 146° 55'.07 E  
38° 50'.20 S 146° 45'.98 E  
38° 42'.15 S 147° 06'.10 E  
38° 58'.73 S 147° 03'.30 E  
39° 04'.37 S 147° 14'.28 E.

**Chart temporarily affected - Aus 181 - Aus 357 - Aus 802**

**127(T)/2020 AUSTRALIA - VICTORIA - Western Port - Crib Point - Scientific Instruments recovered**

*Former Notice* - 305(T)/2019 is cancelled  
Victorian Regional Channels Authority Notice 1(T)/2020

Cancel this notice on receipt.

**Chart formerly affected - Aus 140 - Aus 143 - Aus 152**

II

**HYDROGRAPHIC REPORTS**

NIL

*To accompany Australian Notice to Mariners 89/2020*

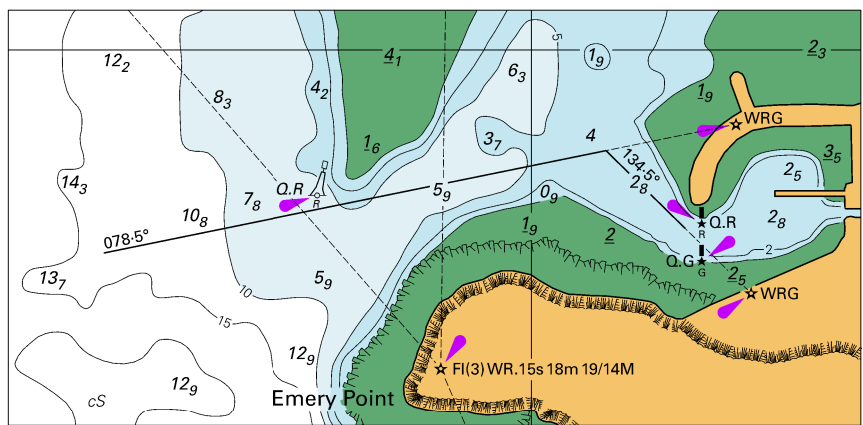
**SYDNEY VESSEL TRAFFIC SERVICE AREA**

For entry into Sydney Harbour, vessels approaching Port Jackson are to contact Sydney Vessel Traffic Services (Call Sign Sydney VTS) on VHF channel 13, two hours prior to arrival off port limits.

For entry into Botany Bay, vessels approaching Port Botany are to contact Sydney Vessel Traffic Services (Call Sign Sydney VTS) on VHF channel 12, two hours prior to arrival off port limits.

*Note for chart Aus 202*

To accompany Australian Notice to Mariners 98/2020



Block for chart Aus 24

© Commonwealth of Australia 2020

(112.7 x 54.9mm)